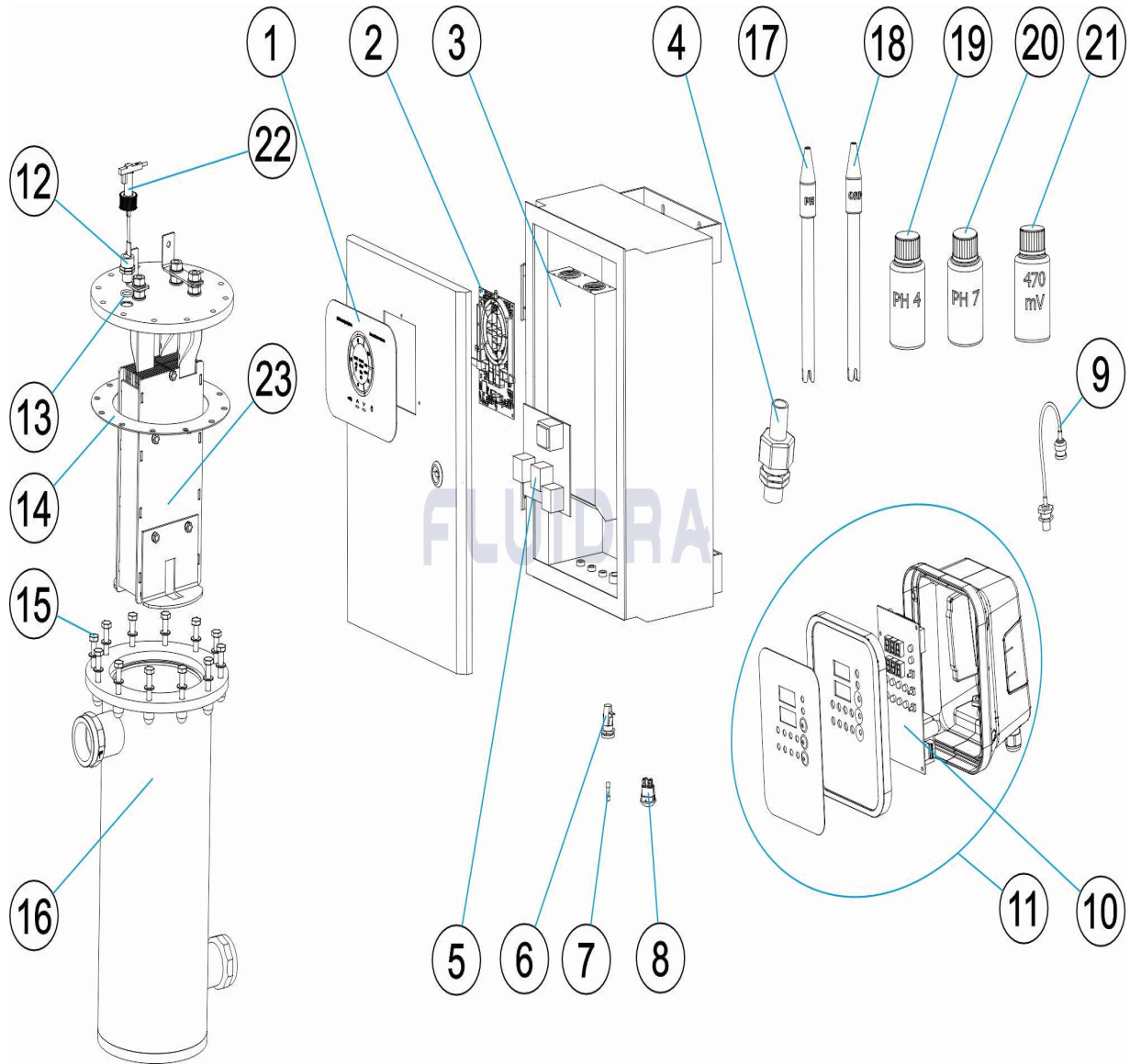


CODIGO 76376, 76377, 76378, 76379, 76380, 76381, 76382, 76383

DESCRIPCION: EASY SALT NEXT VC



ESPAÑOL

POS	CODIGO	DESCRIPCION	CANTIDAD	POS	CODIGO	DESCRIPCION	CANTIDAD
1	4408040124	CARATULA DISPLAY		9	4408070069	CONECTOR BNC	
2	* 4408040125	TARJETA VISUALIZADORA 75GR		10	4408040153	PLACA CONTROL ORP	
2	* 4408040126	TARJETA VISUALIZADORA 75GR+REG		11	* 4408040435	CONTROLADOR ORP	
2	* 4408040137	TARJETA VISUALIZADORA 100GR		11	* 4408040436	CONTROLADOR PH	
2	* 4408040535	TARJETA VISUALIZADORA 100GR+REG		12	4408040449	REDUCCION ROSCADA 3/4" A 1/2"	
2	* 4408040496	TARJETA VISUALIZADORA 150GR		13	4408040528	JUNTA TORICA	
2	* 4408040497	TARJETA VISUALIZADORA 150GR+REG		14	4408040529	JUNTA EPDM	
2	* 4408040498	TARJETA VISUALIZADORA 190GR		15	4408040117	KIT DE TORNILLERIA	
2	* 4408040499	TARJETA VISUALIZADORA 190GR+REG		16	* 4408040530	CELULA 75/100 VC	
3	4408040429	FUENTE FULL-R 750W-24VDC		16	* 4408040531	CELULA 150/190 VC	
4	4408040474	RACORD PORTASONDAS		17	* 60648	ELECTRODO COMBINADO PH	
5	4408040500	TARJETA DE POTENCIA		18	* 60649	ELECTRODO ORP	
6	4408040431	PORTAFUSIBLE 5X20		19	* 60632	TAMPON PH 4.0 50 ML. (ROJO)	

* NOTA OBSERVACIONES

CODIGO **76376, 76377, 76378, 76379, 76380, 76381, 76382, 76383**

DESCRIPCION: **EASY SALT NEXT VC**

7	4408040432	FUSIBLE 5X20 10A	20	* 60618	TAMPON PH 7,0 50 M/L. (VERDE)
8	4408040355	INDICADOR LUMINOSO	21	* 60633	SOLUCION CALIBRACION 470MV.
22	71124	FLUJOSTATO	23	* 76353	RECAMBIO ELECTRODO
23	* 76351	RECAMBIO ELECTRODO	23	* 76354	RECAMBIO ELECTRODO
23	* 76352	RECAMBIO ELECTRODO			

CODIGO **76376, 76377, 76378, 76379, 76380, 76381, 76382, 76383**

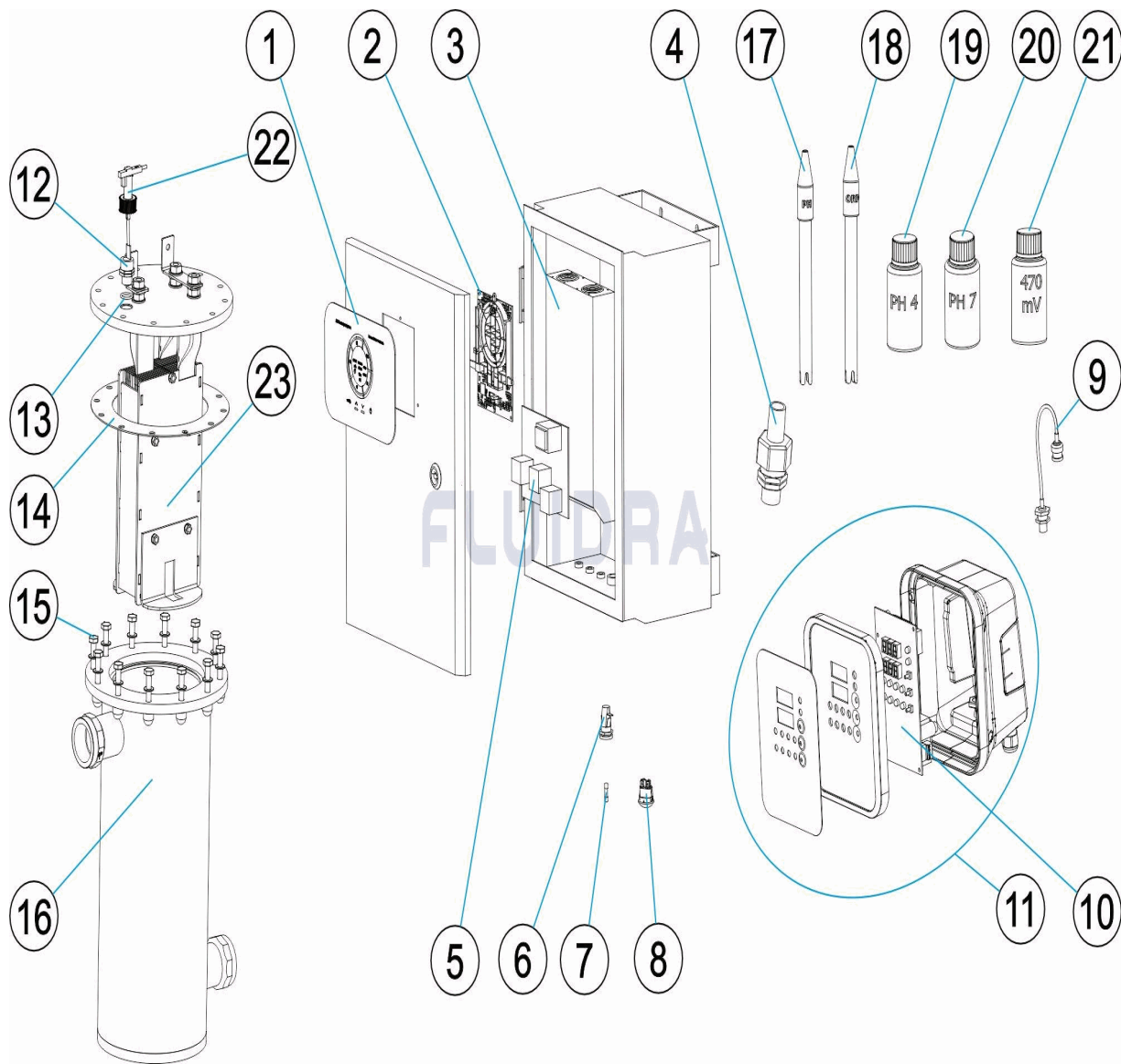
DESCRIPCION: EASY SALT NEXT VC

OBSERVACIONES

POS	CODIGO	OBSERVACIONES
2	* 4408040125	PARA: 76376
2	* 4408040126	PARA: 76377
2	* 4408040137	PARA: 76378
2	* 4408040535	PARA: 76379
2	* 4408040496	PARA: 76380
2	* 4408040497	PARA: 76381
2	* 4408040498	PARA: 76382
2	* 4408040499	PARA: 76383
11	* 4408040435	PARA: 76377, 76379, 76381, 76383
11	* 4408040436	PARA: 76377, 76379, 76381, 76383
16	* 4408040530	PARA: 76376, 76377, 76378, 76379
16	* 4408040531	PARA: 76376, 76377, 76378, 76379
17	* 60648	PARA: 76377, 76379, 76381, 76383
18	* 60649	PARA: 76377, 76379, 76381, 76383
19	* 60632	PARA: 76377, 76379, 76381, 76383
20	* 60618	PARA: 76377, 76379, 76381, 76383
21	* 60633	PARA: 76377, 76379, 76381, 76383
23	* 76351	PARA: 76376, 76377
23	* 76352	PARA: 76378, 76379
23	* 76353	PARA: 76380, 76381
23	* 76354	PARA: 76382, 76383

CODE 76376, 76377, 76378, 76379, 76380, 76381, 76382, 76383

DESCRIPTION: EASY SALT NEXT VC



FRANCAIS

POS	CODE	DESCRIPTION	QUANTITE	POS	CODE	DESCRIPTION	QUANTITE
1	4408040124	FACADE DISPLAY		9	4408070069	CONNECTEUR BNC	
2	* 4408040125	CARTE AFFICHEUR 75GR		10	4408040153	PLAQUE CONTRÔLE ORP	
2	* 4408040126	CARTE AFFICHEUR 75GR+REG		11	* 4408040435	CONTRÔLEUR ORP	
2	* 4408040137	CARTE AFFICHEUR 100GR		11	* 4408040436	CONTRÔLEUR PH	
2	* 4408040535	ARTE AFFICHEUR 100GR+REG		12	4408040449	REDUCTION TOURNANTE ¼" À ½"	
2	* 4408040496	CARTE AFFICHEUR 150GR		13	4408040528	JOINT TORIQUE	
2	* 4408040497	CARTE AFFICHEUR 150GR+REG		14	4408040529	JOINT EPDM	
2	* 4408040498	CARTE AFFICHEUR 190GR		15	4408040117	KIT VIS	
2	* 4408040499	CARTE AFFICHEUR 190GR+REG		16	* 4408040530	CELLULE 75/100 VC	
3	4408040429	SOURCE FULL-R 750W-24VDC		16	* 4408040531	CELLULE 150/190 VC	
4	4408040474	RACCORD PORTE-SONDES		17	* 60648	ELECTRODE COMBINÉE PH	
5	4408040500	CARTE PUISSANCE		18	* 60649	ELECTRODE ORP	
6	4408040431	PORTE-FUSIBLES 5X20		19	* 60632	TAMPON PH 4.0 50 ML. (ROUGE)	

* VOIR FICHE D'OBSERVATIONS

CODE **76376, 76377, 76378, 76379, 76380, 76381, 76382, 76383**

DESCRIPTION: **EASY SALT NEXT VC**

7	4408040432	FUSIBLE 5X20 10A	20	* 60618	TAMPON PH 7,0 50 M/L. (VERT)
8	4408040355	INDICATEUR LUMINEUX	21	* 60633	SOLUTION CALIBRAGE 470 MV
22	71124	CONTROLEUR DE DEBIT	23	* 76353	RECHANGE ÉLECTRODE
23	* 76351	RECHANGE ÉLECTRODE	23	* 76354	RECHANGE ÉLECTRODE
23	* 76352	RECHANGE ÉLECTRODE			

CODE **76376, 76377, 76378, 76379, 76380, 76381, 76382, 76383**

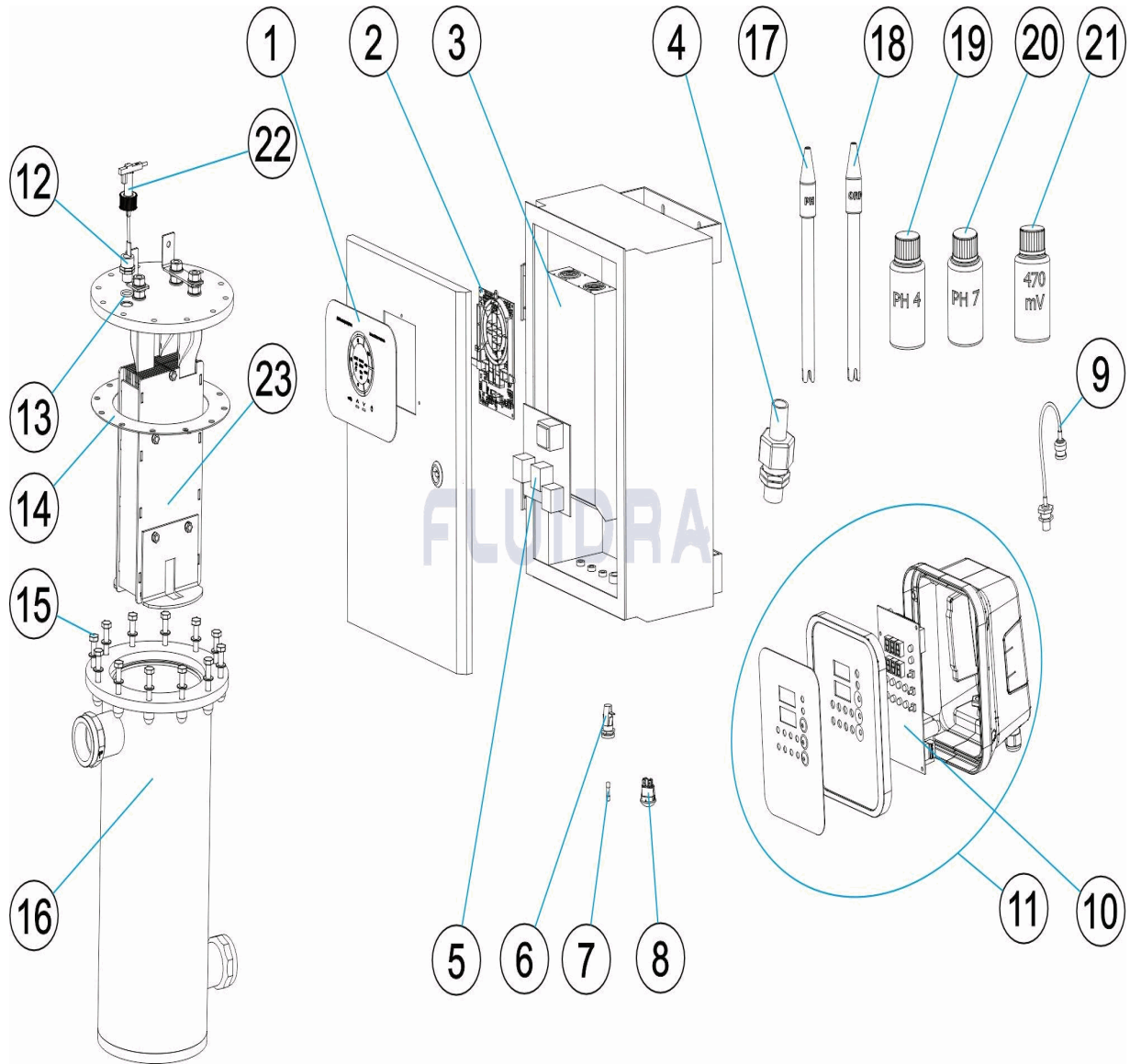
DESCRIPTION: **EASY SALT NEXT VC**

OBSERVATIONS

POS	CODE	OBSERVATIONS
2	* 4408040125	POUR: 76376
2	* 4408040126	POUR: 76377
2	* 4408040137	POUR: 76378
2	* 4408040535	POUR: 76379
2	* 4408040496	POUR: 76380
2	* 4408040497	POUR: 76381
2	* 4408040498	POUR: 76382
2	* 4408040499	POUR: 76383
11	* 4408040435	POUR: 76377, 76379, 76381, 76383
11	* 4408040436	POUR: 76377, 76379, 76381, 76383
16	* 4408040530	POUR: 76376, 76377, 76378, 76379
16	* 4408040531	POUR: 76376, 76377, 76378, 76379
17	* 60648	POUR: 76377, 76379, 76381, 76383
18	* 60649	POUR: 76377, 76379, 76381, 76383
19	* 60632	POUR: 76377, 76379, 76381, 76383
20	* 60618	POUR: 76377, 76379, 76381, 76383
21	* 60633	POUR: 76377, 76379, 76381, 76383
23	* 76351	POUR: 76376, 76377
23	* 76352	POUR: 76378, 76379
23	* 76353	POUR: 76380, 76381
23	* 76354	POUR: 76382, 76383

CODE 76376, 76377, 76378, 76379, 76380, 76381, 76382, 76383

DESCRIPTION: EASY SALT NEXT VC



ENGLISH

POS	CODE	DESCRIPTION	QUANTITY	POS	CODE	DESCRIPTION	QUANTITY
1	4408040124	DISPLAY FACEPLATE		9	4408070069	BNC CONNECTOR	
2	* 4408040125	75GR VIEWER CARD		10	4408040153	ELECTRONIC CARD ORP	
2	* 4408040126	75GR+REG VIEWER CARD		11	* 4408040435	ORP CONTROLLER	
2	* 4408040137	100GR VIEWER CARD		11	* 4408040436	PH CONTROLLER	
2	* 4408040535	100GR+REG VIEWER CARD		12	4408040449	¾" TO ½" THREADED REDUCER	
2	* 4408040496	150GRVIEWER CARD		13	4408040528	O' RING	
2	* 4408040497	150GR+REG VIEWER CARD		14	4408040529	GASKET EPDM	
2	* 4408040498	190GR VIEWER CARD		15	4408040117	SCREW KIT	
2	* 4408040499	190GR+REG VIEWER CARD		16	* 4408040530	75/100 VC CELL	
3	4408040429	FULL-R 750W-24VDC SOURCE		16	* 4408040531	150/190 VC CELL	
4	4408040474	SENSOR HOLDER FITTING		17	* 60648	ELECTRODE PH	
5	4408040500	POWER CARD		18	* 60649	ORP ELECTRODE	
6	4408040431	FUSE HOLDER 5X20		19	* 60632	CALIBRATION SOLUTION PH 4,0 50 ML. (RE	

* SEE OBSERVATIONS SHEET

CODE **76376, 76377, 76378, 76379, 76380, 76381, 76382, 76383**

DESCRIPTION: **EASY SALT NEXT VC**

7	4408040432	FUSE 5X20 10A	20	* 60618	CALIBRATION SOLUTION PH 7,0 50 M/L. (Gf
8	4408040355	INDICATOR LIGHT	21	* 60633	CALIBRATION SOLUTION ORP 470 MV
22	71124	WATER FLOW SWITCH	23	* 76353	ELECTRODE SPARE
23	* 76351	ELECTRODE SPARE	23	* 76354	ELECTRODE SPARE
23	* 76352	ELECTRODE SPARE			

CODE **76376, 76377, 76378, 76379, 76380, 76381, 76382, 76383**

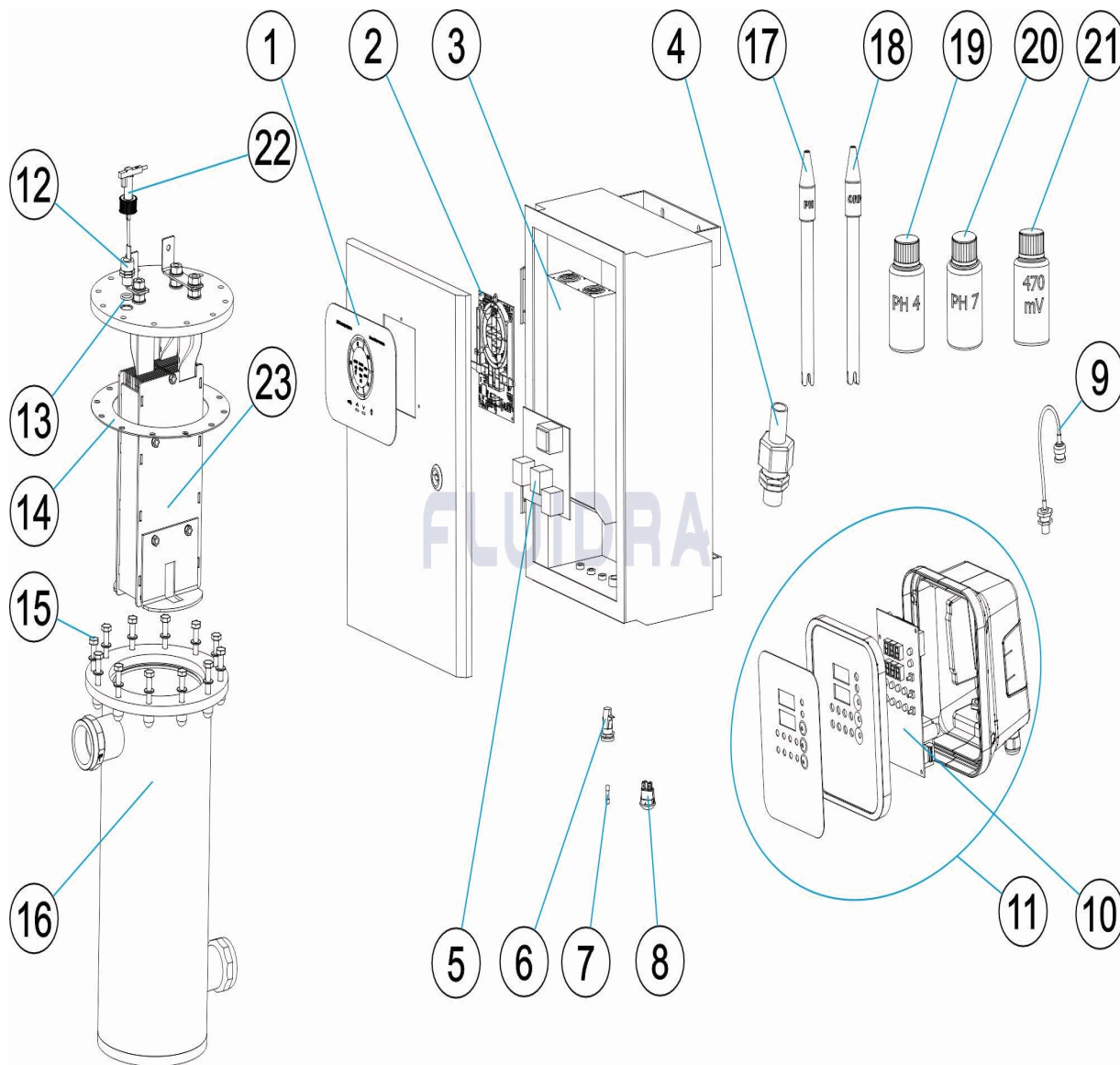
DESCRIPTION: **EASY SALT NEXT VC**

OBSERVATIONS

POS	CODE	OBSERVATIONS
2	* 4408040125	FOR: 76376
2	* 4408040126	FOR: 76377
2	* 4408040137	FOR: 76378
2	* 4408040535	FOR: 76379
2	* 4408040496	FOR: 76380
2	* 4408040497	FOR: 76381
2	* 4408040498	FOR: 76382
2	* 4408040499	FOR: 76383
11	* 4408040435	FOR: 76377, 76379, 76381, 76383
11	* 4408040436	FOR: 76377, 76379, 76381, 76383
16	* 4408040530	FOR: 76376, 76377, 76378, 76379
16	* 4408040531	FOR: 76376, 76377, 76378, 76379
17	* 60648	FOR: 76377, 76379, 76381, 76383
18	* 60649	FOR: 76377, 76379, 76381, 76383
19	* 60632	FOR: 76377, 76379, 76381, 76383
20	* 60618	FOR: 76377, 76379, 76381, 76383
21	* 60633	FOR: 76377, 76379, 76381, 76383
23	* 76351	FOR: 76376, 76377
23	* 76352	FOR: 76378, 76379
23	* 76353	FOR: 76380, 76381
23	* 76354	FOR: 76382, 76383

CODICE 76376, 76377, 76378, 76379, 76380, 76381, 76382, 76383

DESCRIZIONE: EASY SALT NEXT VC



ITALIANO

POS	CODICE	DESCRIZIONE	QUANTITA'	POS	CODICE	DESCRIZIONE	QUANTITA'
1	4408040124	MASCHERA DISPLAY		9	4408070069	CONNETTORE BNC	
2	* 4408040125	SCHEDA VISORE 75GR		10	4408040153	SCHEDA ORP	
2	* 4408040126	SCHEDA VISORE 75GR+REG		11	* 4408040435	CONTROLLATORE ORP	
2	* 4408040137	SCHEDA VISORE 100GR		11	* 4408040436	CONTROLLATORE PH	
2	* 4408040535	SCHEDA VISORE 100GR+REG		12	4408040449	RIDUZIONE FILETTATA 3/8" A 1/2"	
2	* 4408040496	SCHEDA VISORE 150GR		13	4408040528	O' RING	
2	* 4408040497	SCHEDA VISORE 150GR+REG		14	4408040529	GUARNIZIONE EPDM	
2	* 4408040498	SCHEDA VISORE 190GR		15	4408040117	KIT BULLONERIA	
2	* 4408040499	SCHEDA VISORE 190GR+REG		16	* 4408040530	CELLULA 75/100 VC	
3	4408040429	FONTE FULL-R 750W-24VDC		16	* 4408040531	CELLULA 150/190 VC	
4	4408040474	RACCORDO PORTA-SONDE		17	* 60648	ELETTRODO COMBINATO PH	
5	4408040500	SCHEDA POTENZA		18	* 60649	ELETTRODO RX	
6	4408040431	PORTAFUSIBILI 5X20		19	* 60632	SOLUCIONE TAMPONE PH 4,0 50 ML. (ROS:	

* SI FACCIA RIFERIMENTO AL FOGLIO DELLE OSSERVAZIONI

CODICE **76376, 76377, 76378, 76379, 76380, 76381, 76382, 76383**

DESCRIZIONE: **EASY SALT NEXT VC**

7	4408040432	FUSIBILE 5X20 10A	20	* 60618	SOLUZIONE TAMPONE PH 7,0 50 M/L. (VER
8	4408040355	INDICATORE LUMINOSO	21	* 60633	SOLUZIONE CALIBRAZIONE 470MV.
22	71124	FLUSSOSTATO	23	* 76353	RECAMBIO ELETTRODO
23	* 76351	RECAMBIO ELETTRODO	23	* 76354	RECAMBIO ELETTRODO
23	* 76352	RECAMBIO ELETTRODO			

CODICE **76376, 76377, 76378, 76379, 76380, 76381, 76382, 76383**

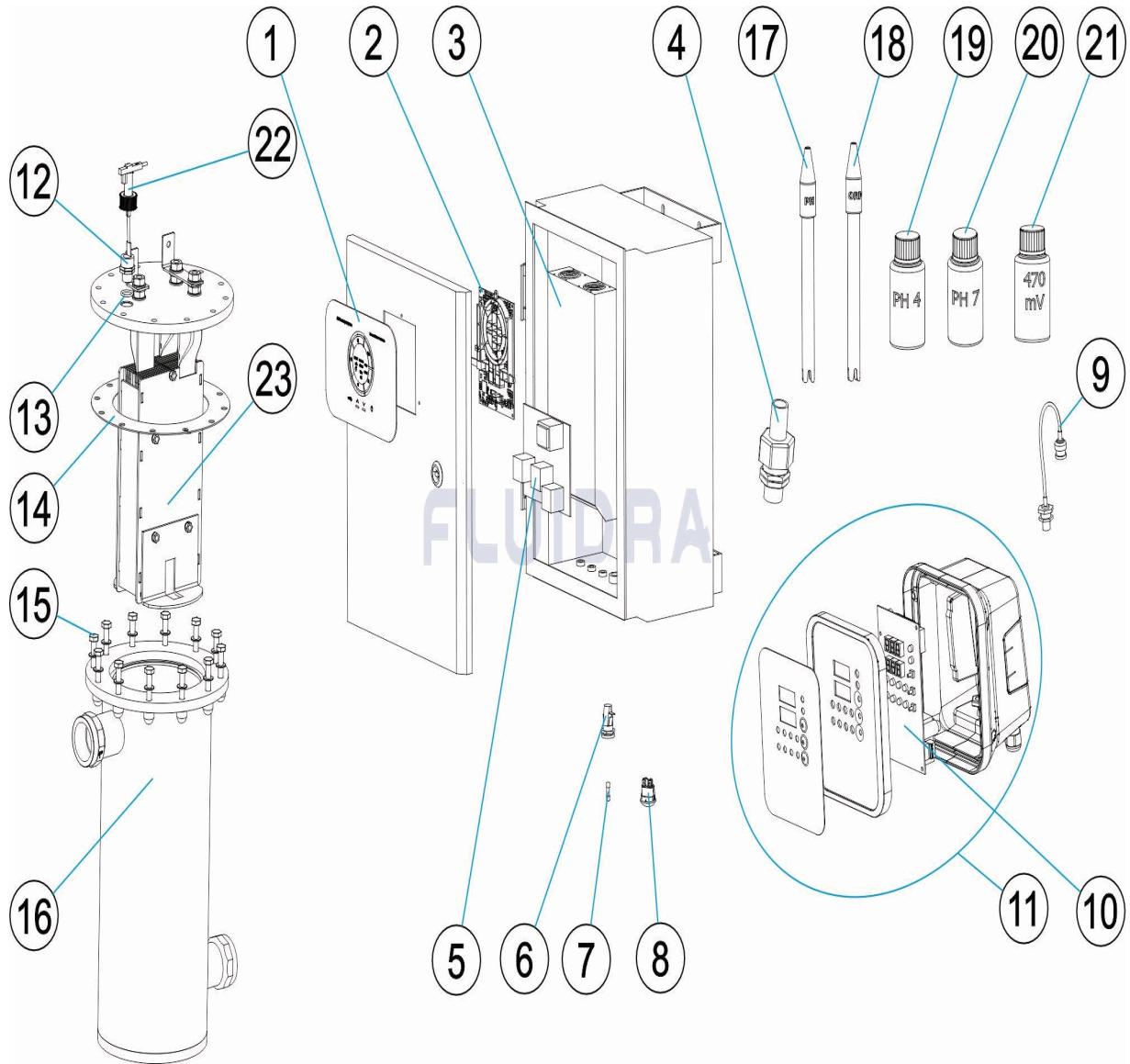
DESCRIZIONE: **EASY SALT NEXT VC**

OSSERVAZIONI

POS	CODICE	OSSERVAZIONI
2	* 4408040125	PER: 76376
2	* 4408040126	PER: 76377
2	* 4408040137	PER: 76378
2	* 4408040535	PER: 76379
2	* 4408040496	PER: 76380
2	* 4408040497	PER: 76381
2	* 4408040498	PER: 76382
2	* 4408040499	PER: 76383
11	* 4408040435	PER: 76377, 76379, 76381, 76383
11	* 4408040436	PER: 76377, 76379, 76381, 76383
16	* 4408040530	PER: 76376, 76377, 76378, 76379
16	* 4408040531	PER: 76376, 76377, 76378, 76379
17	* 60648	PER: 76377, 76379, 76381, 76383
18	* 60649	PER: 76377, 76379, 76381, 76383
19	* 60632	PER: 76377, 76379, 76381, 76383
20	* 60618	PER: 76377, 76379, 76381, 76383
21	* 60633	PER: 76377, 76379, 76381, 76383
23	* 76351	PER: 76376, 76377
23	* 76352	PER: 76378, 76379
23	* 76353	PER: 76380, 76381
23	* 76354	PER: 76382, 76383

CODE 76376, 76377, 76378, 76379, 76380, 76381, 76382, 76383

BESCHREIBUNG: EASY SALT NEXT VC



DEUTSCH

POS	CODE	BESCHREIBUNG	MENGE	POS	CODE	BESCHREIBUNG	MENGE
1	4408040124	BEDIENFELD DISPLAY		9	4408070069	STECKKUPPLUNG BNC	
2	* 4408040125	BILDSCHIRM 75GR		10	4408040153	ORP-KONTROLLPLATTE	
2	* 4408040126	BILDSCHIRM 75GR+REG		11	* 4408040435	STEUERUNG ORP	
2	* 4408040137	BILDSCHIRM 100GR		11	* 4408040436	STEUERUNG PH	
2	* 4408040535	BILDSCHIRM 100GR+REG		12	4408040449	REDUZIERSTÜCK GEWINDE 3/4" BIS 1/2"	
2	* 4408040496	BILDSCHIRM 150GR		13	4408040528	O' RING	
2	* 4408040497	BILDSCHIRM 150GR+REG		14	4408040529	DICHTUNG EPDM	
2	* 4408040498	BILDSCHIRM 190GR		15	4408040117	SCHRAUBENSATZ	
2	* 4408040499	BILDSCHIRM 190GR+REG		16	* 4408040530	ZELLE 75 / 100 VC	
3	4408040429	STROMVERSORGUNG 2FULL-R 750W-24VI		16	* 4408040531	ZELLE 150/190 VC	
4	4408040474	GEWINDESTÜCK SONDENHALTERUNG		17	* 60648	ELEKTRODE KOMBINIERT PH	
5	4408040500	POWER-KARTE		18	* 60649	ORP-ELEKTRODE	
6	4408040431	SICHERUNGSSITZ 5X20		19	* 60632	PUFFER PH 4,0 50 ML (ROT)	

* SIEHE ANMERKUNGSBLATT

CODE **76376, 76377, 76378, 76379, 76380, 76381, 76382, 76383**

BESCHREIBUNG: **EASY SALT NEXT VC**

7	4408040432	SICHERUNG 5X20 10A	20	* 60618	PUFFER PH 7,0 50 M/L (GRÜN)
8	4408040355	LEUCHTANZEIGE	21	* 60633	KALIBRIERLÖSUNG 47 0MV
22	71124	DURCHFLUSSMESSER	23	* 76353	ERSATZTEIL ELEKTRODE
23	* 76351	ERSATZTEIL ELEKTRODE	23	* 76354	ERSATZTEIL ELEKTRODE
23	* 76352	ERSATZTEIL ELEKTRODE			

CODE **76376, 76377, 76378, 76379, 76380, 76381, 76382, 76383**

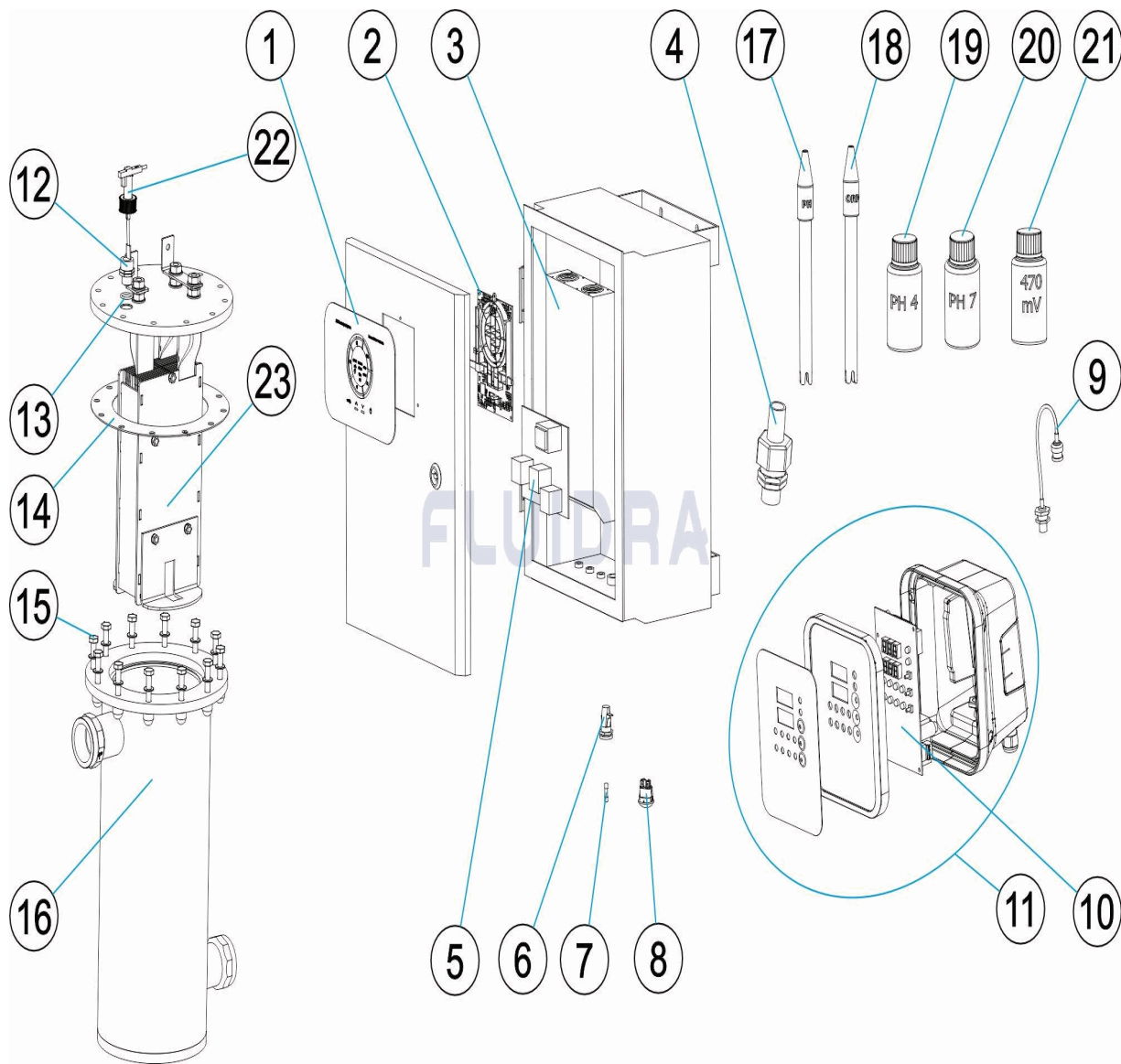
BESCHREIBUNG: **EASY SALT NEXT VC**

HINWEISE

POS	CODE	HINWEISE
2	* 4408040125	FÜR: 76376
2	* 4408040126	FÜR: 76377
2	* 4408040137	FÜR: 76378
2	* 4408040535	FÜR: 76379
2	* 4408040496	FÜR: 76380
2	* 4408040497	FÜR: 76381
2	* 4408040498	FÜR: 76382
2	* 4408040499	FÜR: 76383
11	* 4408040435	FÜR: 76377, 76379, 76381, 76383
11	* 4408040436	FÜR: 76377, 76379, 76381, 76383
16	* 4408040530	FÜR: 76376, 76377, 76378, 76379
16	* 4408040531	FÜR: 76376, 76377, 76378, 76379
17	* 60648	FÜR: 76377, 76379, 76381, 76383
18	* 60649	FÜR: 76377, 76379, 76381, 76383
19	* 60632	FÜR: 76377, 76379, 76381, 76383
20	* 60618	FÜR: 76377, 76379, 76381, 76383
21	* 60633	FÜR: 76377, 76379, 76381, 76383
23	* 76351	FÜR: 76376, 76377
23	* 76352	FÜR: 76378, 76379
23	* 76353	FÜR: 76380, 76381
23	* 76354	FÜR: 76382, 76383

CODIGO 76376, 76377, 76378, 76379, 76380, 76381, 76382, 76383

DESCRIÇÃO: EASY SALT NEXT VC



PORTUGUES

POS	CODIGO	DESCRIÇÃO	JANTIDADE	POS	CODIGO	DESCRIÇÃO	JANTIDADE
1	4408040124	ESPELHO FRONTAL DISPLAY		9	4408070069	LIGAÇÃO BNC	
2	* 4408040125	PLACA VISUALIZAÇÃO 75GR		10	4408040153	PLACA CONTROLO ORP	
2	* 4408040126	PLACA VISUALIZAÇÃO 75GR+REG		11	* 4408040435	CONTROLADOR ORP	
2	* 4408040137	PLACA VISUALIZAÇÃO 100GR		11	* 4408040436	CONTROLADOR PH	
2	* 4408040535	PLACA VISUALIZAÇÃO 100GR+REG		12	4408040449	REDUÇÃO ROSCADA 3/4" PARA 1/2"	
2	* 4408040496	PLACA VISUALIZAÇÃO 150GR		13	4408040528	JUNTA TÓRICA	
2	* 4408040497	PLACA VISUALIZAÇÃO 150GR+REG		14	4408040529	JUNTA EPDM	
2	* 4408040498	PLACA VISUALIZAÇÃO 190GR		15	4408040117	KIT DE FERRAMENTAS	
2	* 4408040499	PLACA VISUALIZAÇÃO 190GR+REG		16	* 4408040530	CÉLULA 75/100 VC	
3	4408040429	FONTE FULL-R 750W-24VDC		16	* 4408040531	CÉLULA 150/190 VC	
4	4408040474	RACORD PORTA-SONDAS		17	* 60648	ELECTRODO COMBINADO PH	
5	4408040500	CARTÃO DE ALIMENTAÇÃO		18	* 60649	ELECTRODO ORP	
6	4408040431	PORTAFUSIVEIS 5X20		19	* 60632	SOLUÇÃO TAMPÃO PH 4,0 50 ML. (VERMEL)	

*** VEJA A FICHA DE OBSERVAÇÕES**

CODIGO **76376, 76377, 76378, 76379, 76380, 76381, 76382, 76383**

DESCRIÇÃO: EASY SALT NEXT VC

7	4408040432	FUSÍVEL 5X20 10A	20	* 60618	SOLUÇÃO TAMPÃO PH 7,0 50 M/L. (VERDE)
8	4408040355	INDICADOR LUMINOSO	21	* 60633	SOLUÇÃO TAMPÃO 470 MV
22	71124	FLUXO-ESTATO	23	* 76353	SOBRESSALENTE ELÉCTRODO
23	* 76351	SOBRESSALENTE ELÉCTRODO	23	* 76354	SOBRESSALENTE ELÉCTRODO
23	* 76352	SOBRESSALENTE ELÉCTRODO			

CODIGO **76376, 76377, 76378, 76379, 76380, 76381, 76382, 76383**

DESCRIÇÃO: EASY SALT NEXT VC

OBSERVAÇÕES

POS	CODIGO	OBSERVAÇÕES
2	* 4408040125	PARA: 76376
2	* 4408040126	PARA: 76377
2	* 4408040137	PARA: 76378
2	* 4408040535	PARA: 76379
2	* 4408040496	PARA: 76380
2	* 4408040497	PARA: 76381
2	* 4408040498	PARA: 76382
2	* 4408040499	PARA: 76383
11	* 4408040435	PARA: 76377, 76379, 76381, 76383
11	* 4408040436	PARA: 76377, 76379, 76381, 76383
16	* 4408040530	PARA: 76376, 76377, 76378, 76379
16	* 4408040531	PARA: 76376, 76377, 76378, 76379
17	* 60648	PARA: 76377, 76379, 76381, 76383
18	* 60649	PARA: 76377, 76379, 76381, 76383
19	* 60632	PARA: 76377, 76379, 76381, 76383
20	* 60618	PARA: 76377, 76379, 76381, 76383
21	* 60633	PARA: 76377, 76379, 76381, 76383
23	* 76351	PARA: 76376, 76377
23	* 76352	PARA: 76378, 76379
23	* 76353	PARA: 76380, 76381
23	* 76354	PARA: 76382, 76383