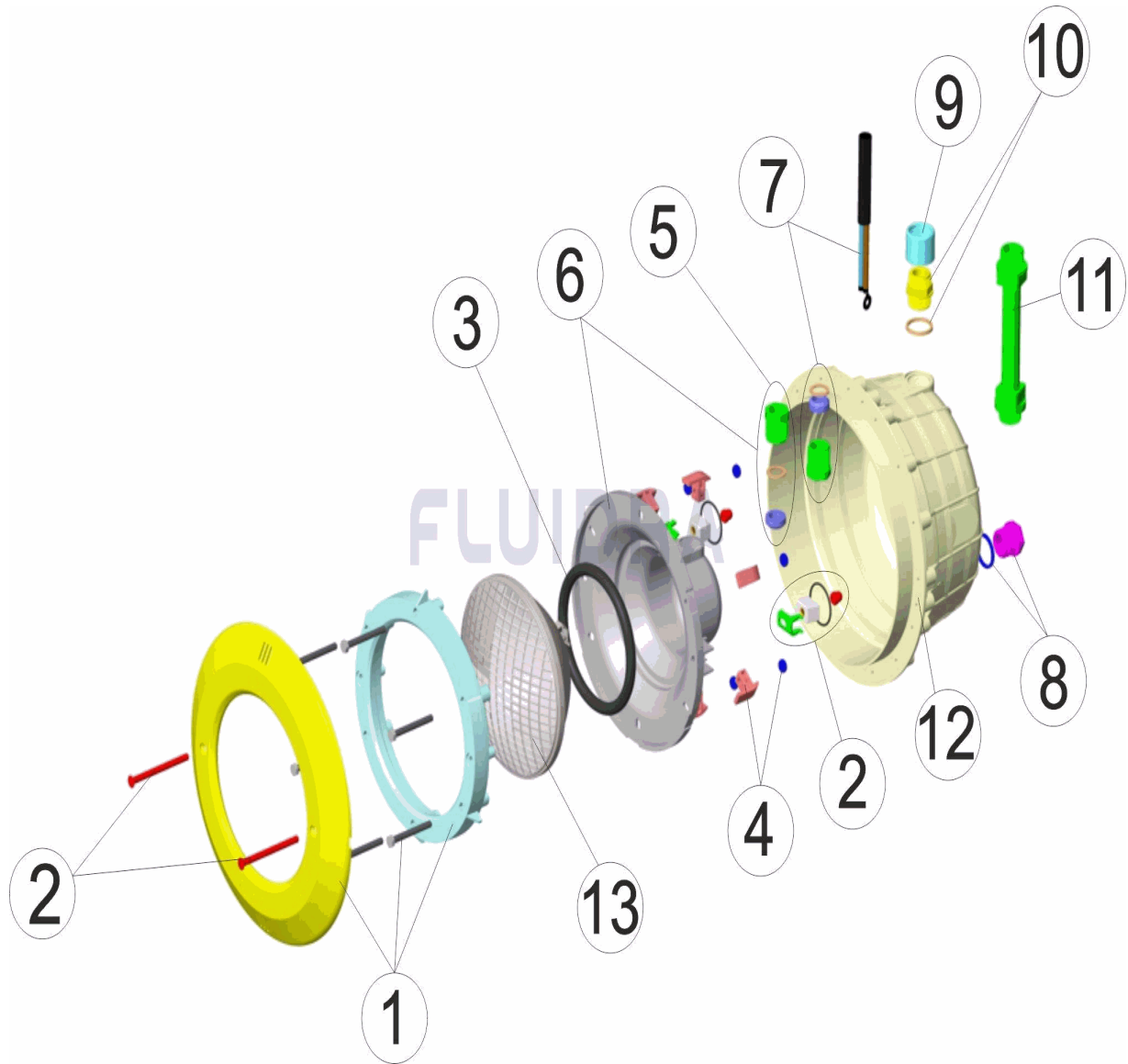


CODIGO **07666**

DESCRIPCION: **PROYECTOR STANDARD BLANCO CON CABLE**

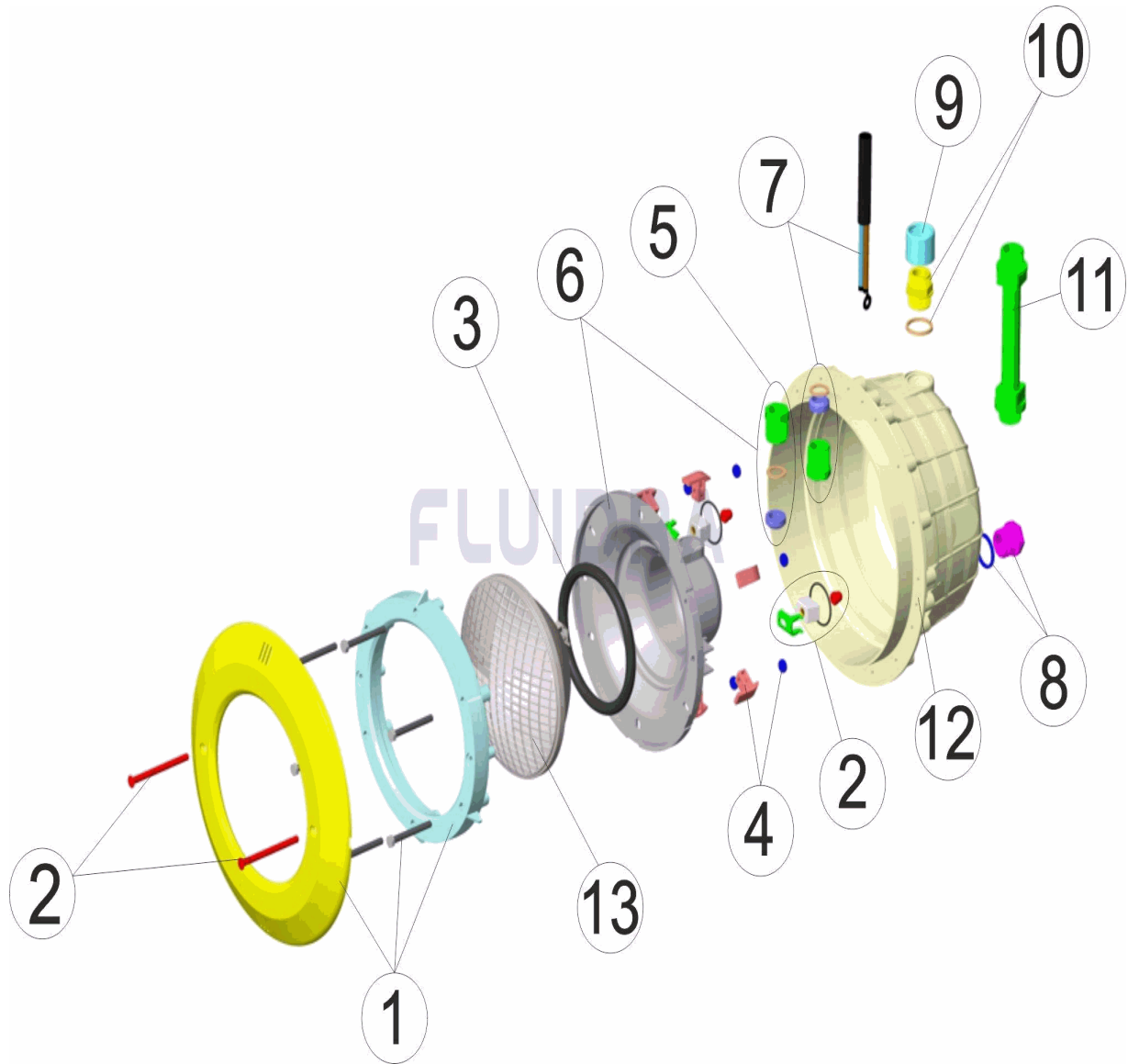


ESPAÑOL

POS	CODIGO	DESCRIPCION	CANTIDAD	POS	CODIGO	DESCRIPCION	CANTIDAD
1	4403010302	ARO BLANCO PROYECTOR		8	4403010080	TAPON NICHOS PROYECTOR	
2	4403015002	CJTO. FIJACION PROYECTOR JELLY STD...		9	4403010802	MANGUITO M-25	
3	4403010304	JUNTA TORICA PROYECTOR		10	4403010081	CUERPO PRENSAESTOPAS PROYECTOR I	
4	4403010306	CLIP FIJACION PROYECTOR		11	4403010059	MANGUERA PASACABLES M-25 3/4"	
5	4403010110	PRENSAESTOPAS M25 HALOGENO		12	4403010098	NICHOS PROYECTOR	
6	4403016001	FONDO FOCO PROYECTOR M-25		13	00370	LAMPARA PAR 56 12.V. 300W	
7	4403010314	CABLE PROYECTOR M-25 HALOGENO					

CODE 07666

DESCRIPTION: PROJECTEUR STANDARD BLANC AVEC CÂBLE

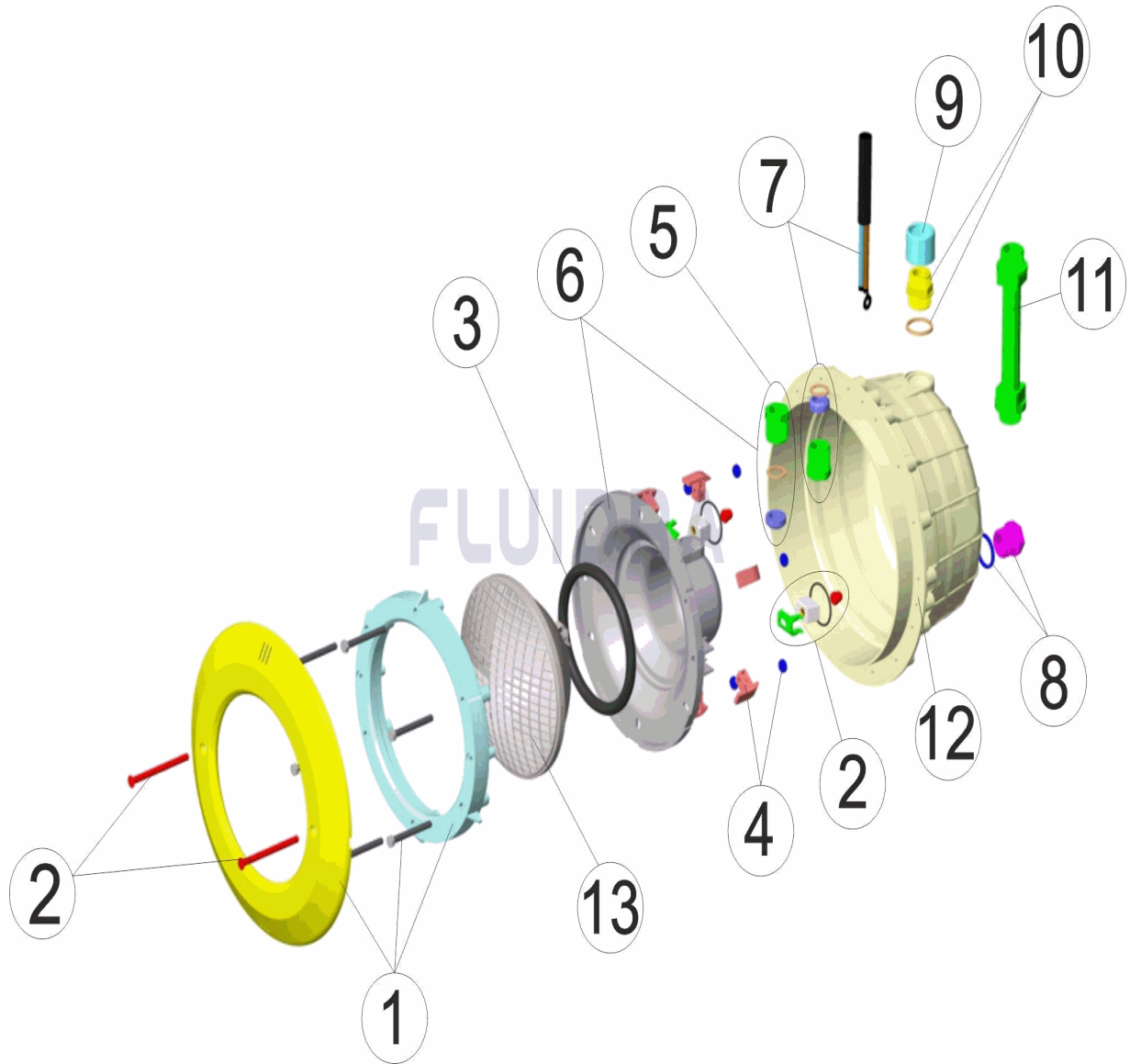


FRANCAIS

POS	CODE	DESCRIPTION	QUANTITE	POS	CODE	DESCRIPTION	QUANTITE
1	4403010302	ENJOLIVEUR BLANC DE PROJECTEUR		8	4403010080	BOUCHON	
2	4403015002	ENSEMBLE FIXATION PROJECTEUR JELLY		9	4403010802	MANCHON M-25	
3	4403010304	JOINT TORIQUE PROJECTEUR		10	4403010081	CORPS PRESSE ETOUPE M-25	
4	4403010306	CLIP FIXATION PROJECTEUR		11	4403010059	TUYAU ANNEAU M-25	
5	4403010110	PRESSE-ETOUPE M 25		12	4403010098	NICHE PROJECTEUR	
6	4403016001	FOND PROJECTEUR M-25		13	00370	LAMPE 12.V. 300W	
7	4403010314	CABLE PROJECTEUR M-25					

CODE **07666**

DESCRIPTION: **WHITE STANDARD LIGHT WITH CABLE**

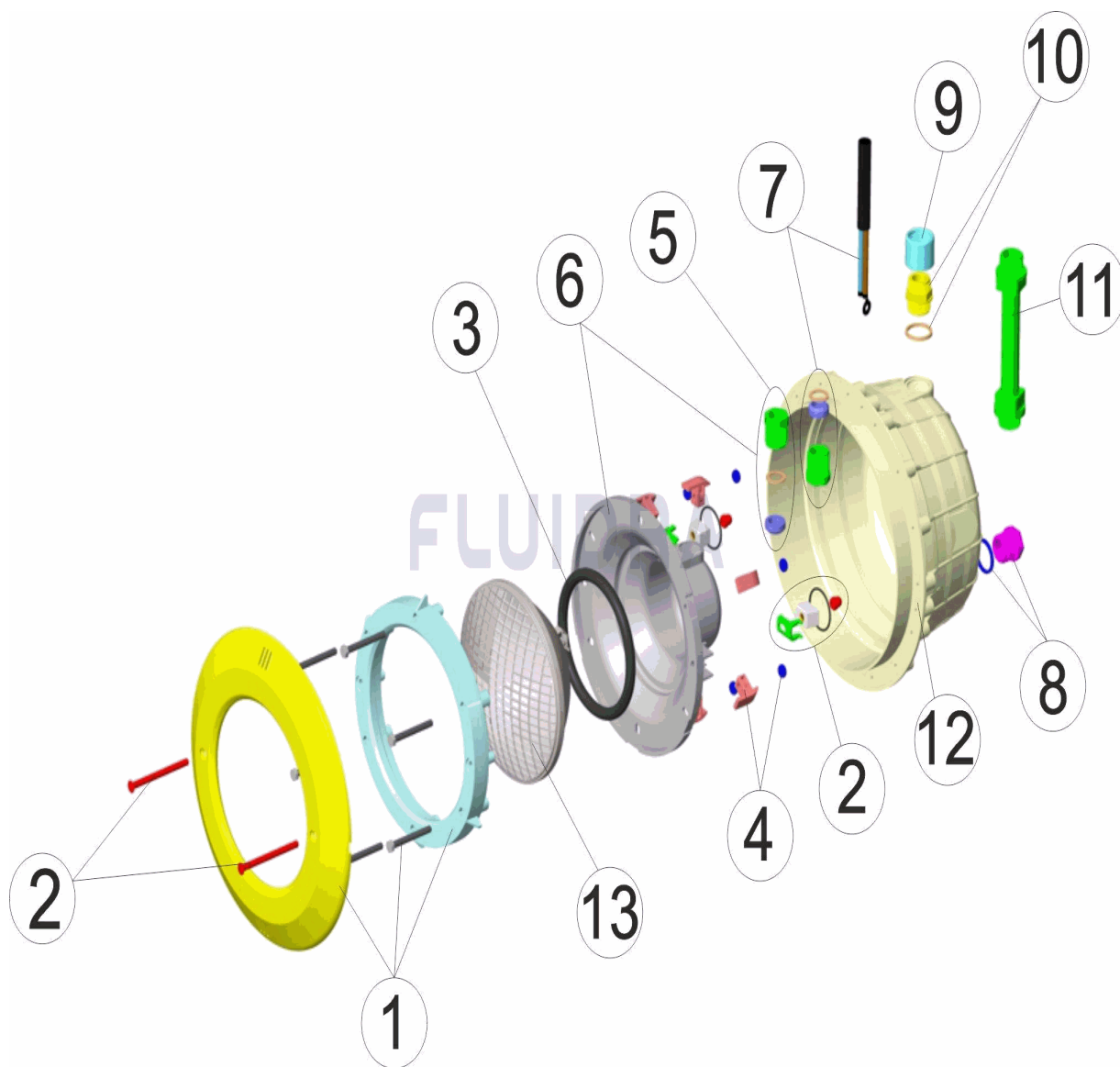


ENGLISH

POS	CODE	DESCRIPTION	QUANTITY	POS	CODE	DESCRIPTION	QUANTITY
1	4403010302	WHITE FACEPLATE		8	4403010080	HANDRAIL PLUNG	
2	4403015002	FIXING SET UNDERWATER LIGHT JELLY S'		9	4403010802	MUFF M-25	
3	4403010304	LIGHT O RING		10	4403010081	PACKING GLAND M-25	
4	4403010306	LIGHT FIXING CLIP		11	4403010059	HOSE CONDUIT M-25	
5	4403010110	PACKING GLAND M 25		12	4403010098	FLOODLAMP HOUSING	
6	4403016001	BACK COVER M-25		13	00370	LIGHTBULB 12.V. 300W	
7	4403010314	LIGHT CABLE M-25					

CODICE **07666**

DESCRIZIONE: **FARO STANDARD BIANCO CON CAVO**

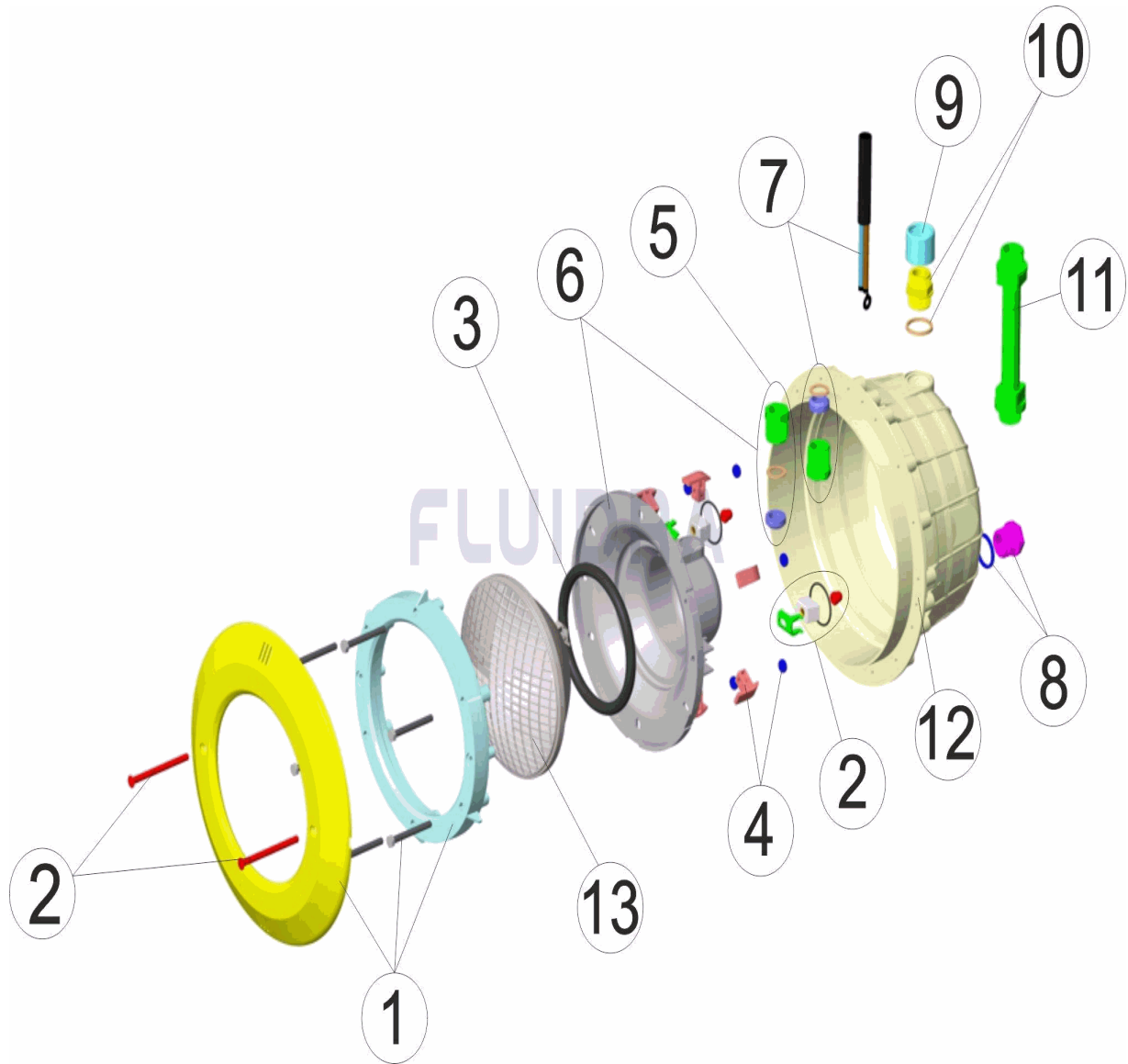


ITALIANO

POS	CODICE	DESCRIZIONE	QUANTITA'	POS	CODICE	DESCRIZIONE	QUANTITA'
1	4403010302	FLANGIA BIANCA FARO		8	4403010080	TAPPO	
2	4403015002	KIT FISSAGGIO PROIETTORE JELLY STD. /		9	4403010802	MANICOTTO M-25	
3	4403010304	O-RING FARO		10	4403010081	CORPO PRESSACAVO M-25	
4	4403010306	CLIP FISSAGGIO FARO		11	4403010059	TUBO PASSACAVO M-25	
5	4403010110	PRESSACAVI M 25		12	4403010098	NICCHIA PROIETTORE	
6	4403016001	CALOTTA FARO M-25		13	00370	LAMPADINA 12.V. 300W	
7	4403010314	CABLE PROJECTEUR M-25					

CODE **07666**

BESCHREIBUNG: **UWS STANDARD WEISS MIT KABEL**

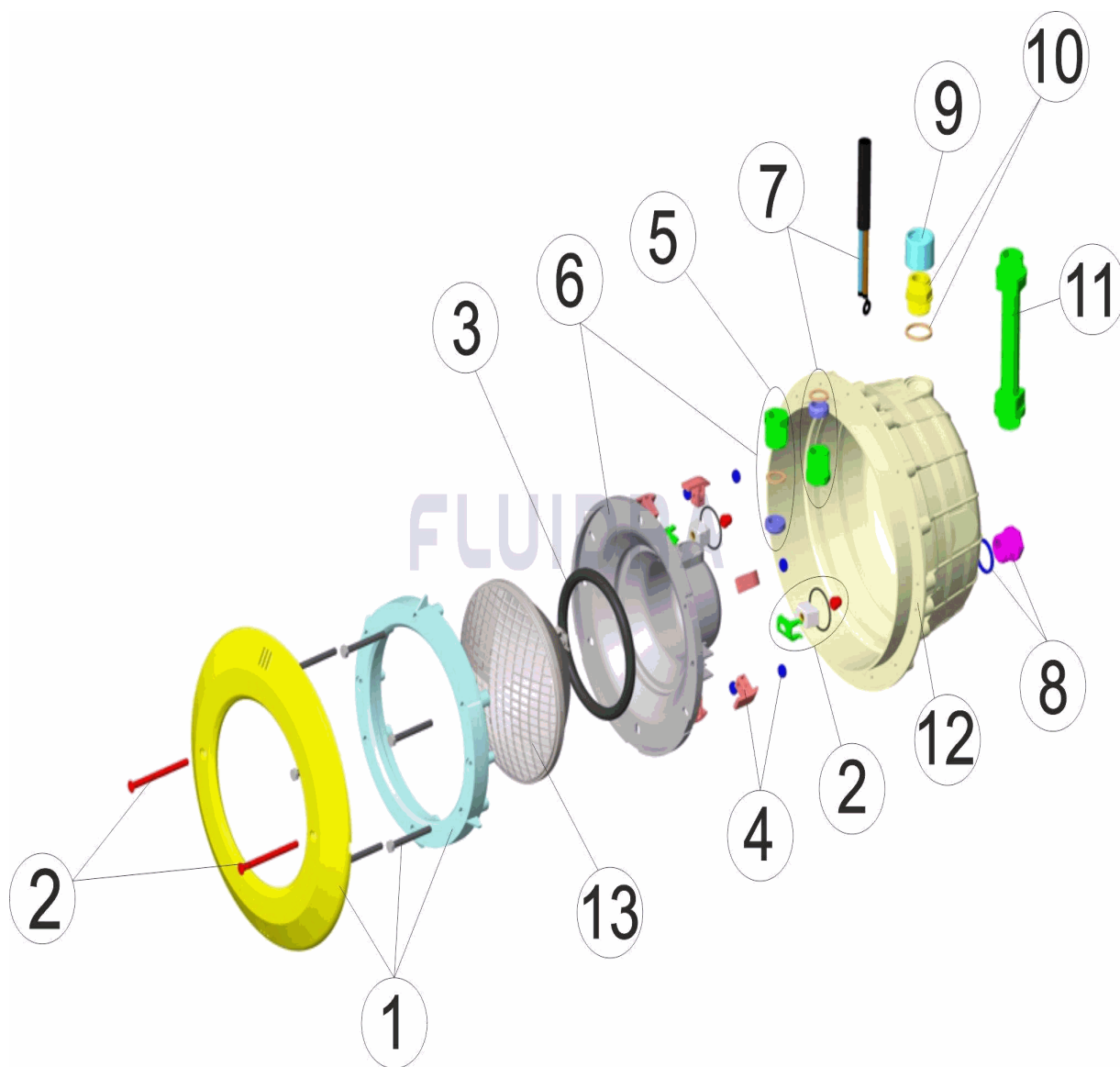


DEUTSCH

POS	CODE	BESCHREIBUNG	MENGE	POS	CODE	BESCHREIBUNG	MENGE
1	4403010302	RING WEISS UWS		8	4403010080	STOPFEN EINBAUTOPF UWS	
2	4403015002	FIXIERSET UWS JELLY STD. A2		9	4403010802	NIPPEL M-25	
3	4403010304	O-RING UWS		10	4403010081	GEHÄUSE QUETSCHVERSCHRAUBUNG UV	
4	4403010306	FIXIERCLIP UWS		11	4403010059	SCHLAUCH KABELDURCHFÜHRUNG M-25 :	
5	4403010110	QUETSCHVERSCHRAUBUNG M25 HALOG		12	4403010098	EINBAUTOPF UWS	
6	4403016001	BASIS UWS M-25		13	00370	LAMPE 300 W 12 V	
7	4403010314	UWS-KABEL M-25 HALOGEN					

CODIGO **07666**

DESCRIÇÃO: **PROJECTOR STANDARD BRANCO COM CABO**



PORTUGUES

POS	CODIGO	DESCRIÇÃO	JANTIDADE	POS	CODIGO	DESCRIÇÃO	JANTIDADE
1	4403010302	ARO BRANCO PROJECTOR		8	4403010080	TAMPAO	
2	4403015002	CONJUNTO FIXAÇÃO PROJECTOR JELLY S		9	4403010802	MANGUITO M-25	
3	4403010304	JUNTA TÓRICA PROJECTOR		10	4403010081	CORPO BUCIN PROJECTOR M-25	
4	4403010306	CLIP FIXAÇÃO PROJECTOR		11	4403010059	MANGUEIRA ANILHA M-25	
5	4403010110	BUCIN M-25		12	4403010098	NICHO PROJECTOR	
6	4403016001	FUNDO FOCO PROJECTOR M-25		13	00370	BOMBILHA PAR 56 12.V. 300W	
7	4403010314	CABO PROJECTOR M-25					