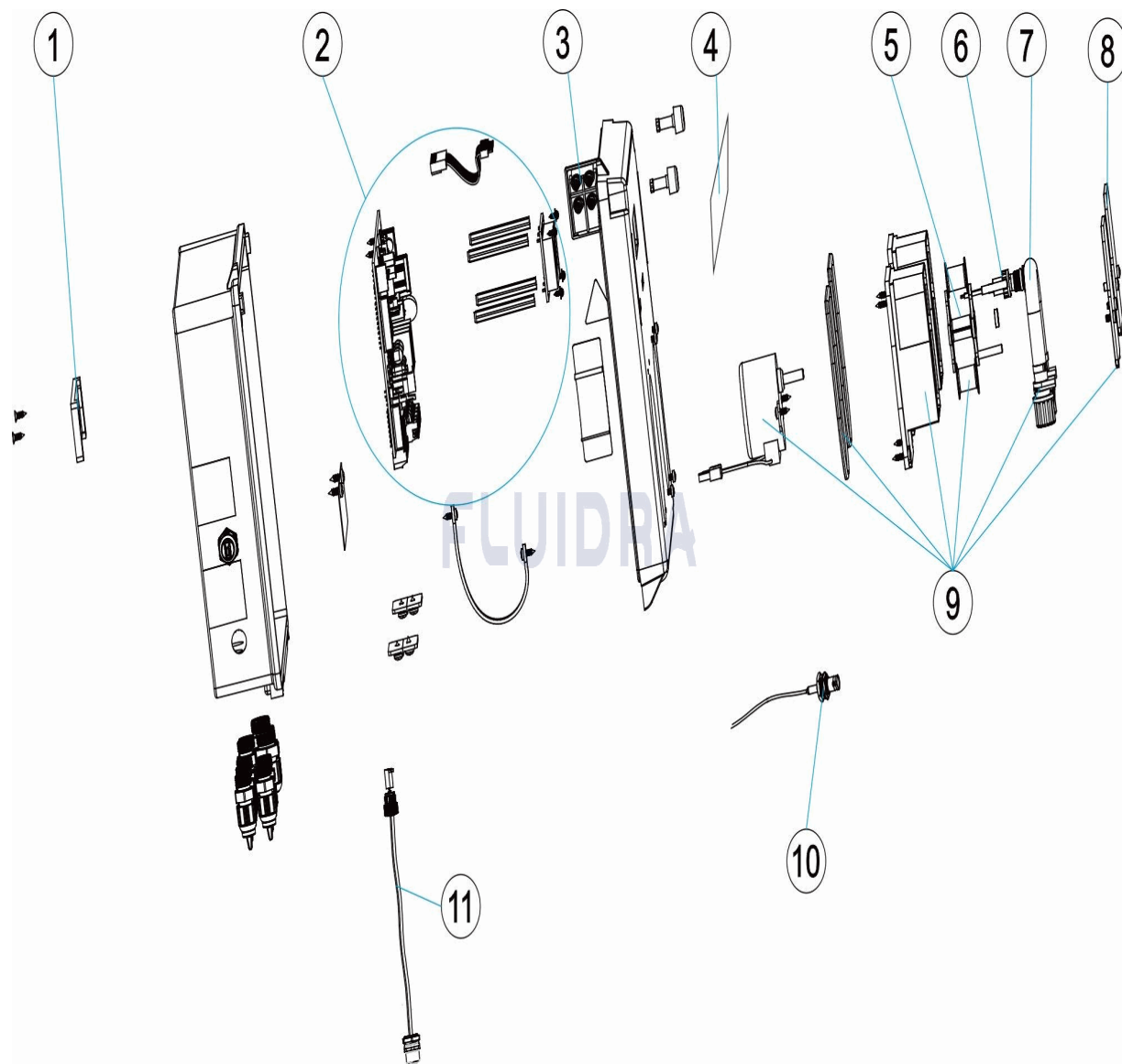


CODIGO **66158, 66180, 66181**

DESCRIPCION: **CONTROL BASIC DOUBLE PH-EV 0,4-1,5L/H**



ESPAÑOL

POS	CODIGO	DESCRIPCION	CANTIDAD	POS	CODIGO	DESCRIPCION	CANTIDAD
1	64983R0001	ESCUADRA SOPORTE		7	* 27883R0000	TUBO DE SANTOPRENE 0,4L/H. CO	
2	* ON-DEMAND	CONSULTAR CON SU PROVEEDOR		7	* 57129R0004	TUBO PERISTALTICO	
2	* ON-DEMAND	CONSULTAR CON SU PROVEEDOR		8	64983R0005	TAPA FRONTAL	
2	* 64983R0002	CIRCUITO ELECTRONICO		9	* 66158R0002	BOMBA PERISTALTICA 0,4 L/H	
3	64983R0003	INTERRUPTOR ALIMENTACION		9	* 64983R0009	BOMBA PERISTALTICA 1,5 L/H	
4	64983R0004	TECLADO		10	* 57129R0007	CABLE COAXIAL RG174A/U 20CM	
5	* 66158R0001	PORTA-RODILLOS		10	* 64983R0006	CABLE COAXIAL RG174A/U 20CM	
5	* 57129R0005	PORTA-RODILLOS		11	* 66159R0009	CABLE L=35CM	
6	57131R0004	LAMPARA ROJA					

CODIGO 66158, 66180, 66181

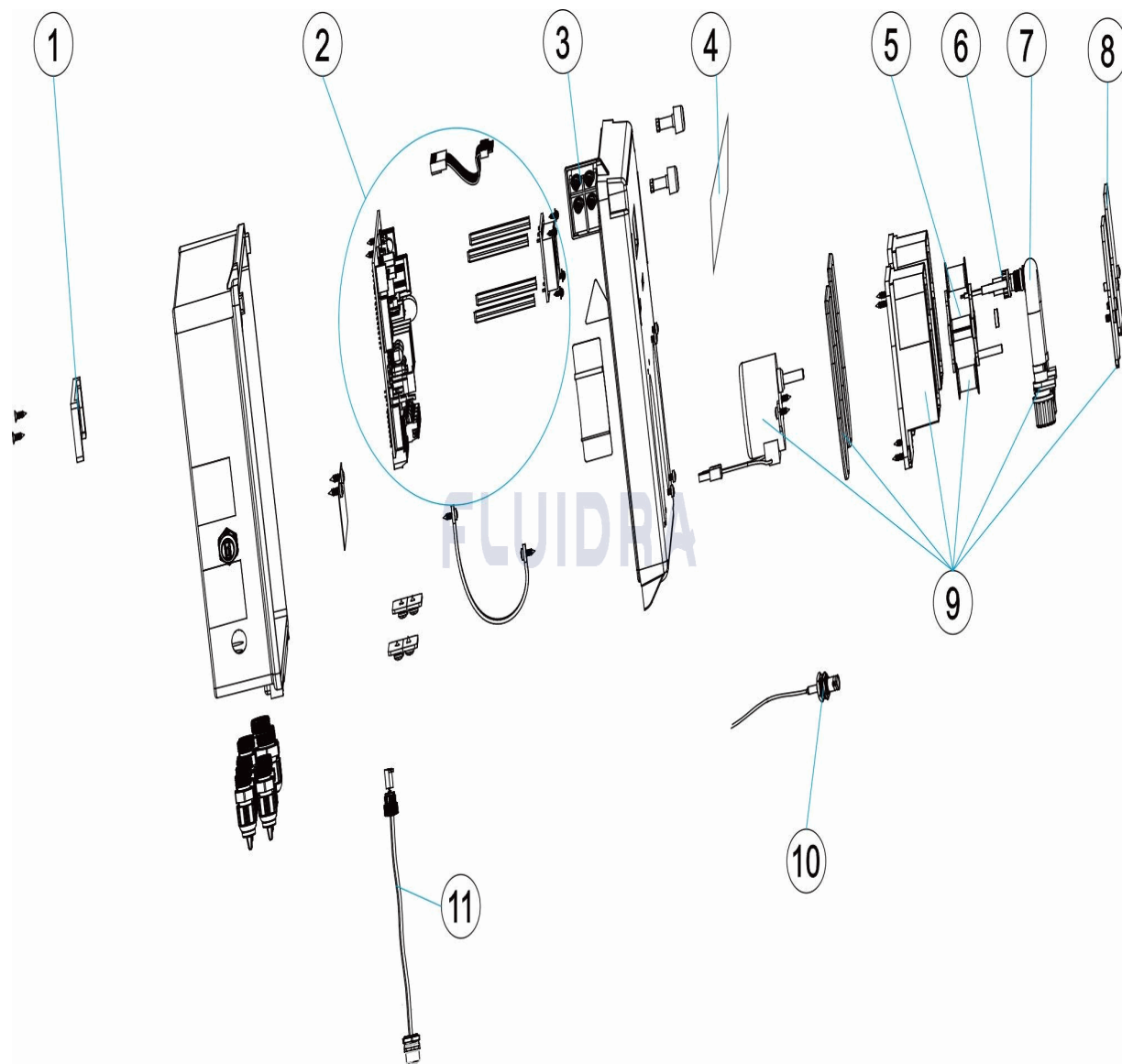
DESCRIPCION: CONTROL BASIC DOUBLE PH-EV 0,4-1,5L/H

OBSERVACIONES

POS	CODIGO	OBSERVACIONES
2	* ON-DEMAND	PARA: 66180
2	* ON-DEMAND	PARA: 66181
2	* 64983R0002	PARA: 66158
5	* 66158R0001	PARA: 66158, 66181
5	* 57129R0005	PARA: 66180
7	* 27883R0000	PARA: 66158, 66181
7	* 57129R0004	PARA: 66180
9	* 66158R0002	PARA: 66158, 66181
9	* 64983R0009	PARA: 66180
10	* 57129R0007	PARA: 66180, 66181
10	* 64983R0006	PARA: 66158
11	* 66159R0009	PARA: 66180, 66181

CODE 66158, 66180, 66181

DESCRIPTION: CONTROL BASIC DOUBLE PH-EV 0,4-1,5L/H



FRANCAIS

POS	CODE	DESCRIPTION	QUANTITE	POS	CODE	DESCRIPTION	QUANTITE
1	64983R0001	ESCUADRA SOPORTE		7	* 27883R0000	TUBE SANTOPRENE 0,4L/H. CO	
2	* ON-DEMAND	CONSULTEZ VOTRE FOURNISSEUR		7	* 57129R0004	TUBE PÉRISTALTIQUE	
2	* ON-DEMAND	CONSULTEZ VOTRE FOURNISSEUR		8	64983R0005	TAPA FRONTAL	
2	* 64983R0002	CIRCUITO ELECTRONICO		9	* 66158R0002	POMPE PERI-STAT 0,4 L/H	
3	64983R0003	INTERRUPTOR ALIMENTACION		9	* 64983R0009	POMPE PERI-STAT 1,5 L/H	
4	64983R0004	CLAVIER		10	* 57129R0007	CABLE COAXIAL RG174A/U 20CM	
5	* 66158R0001	PORTA-RODILLOS		10	* 64983R0006	CABLE COAXIAL RG174A/U 20CM	
5	* 57129R0005	SUPPORT GALETS		11	* 66159R0009	CABLE L=35CM	
6	57131R0004	LAMPE ROUGE					

CODE **66158, 66180, 66181**

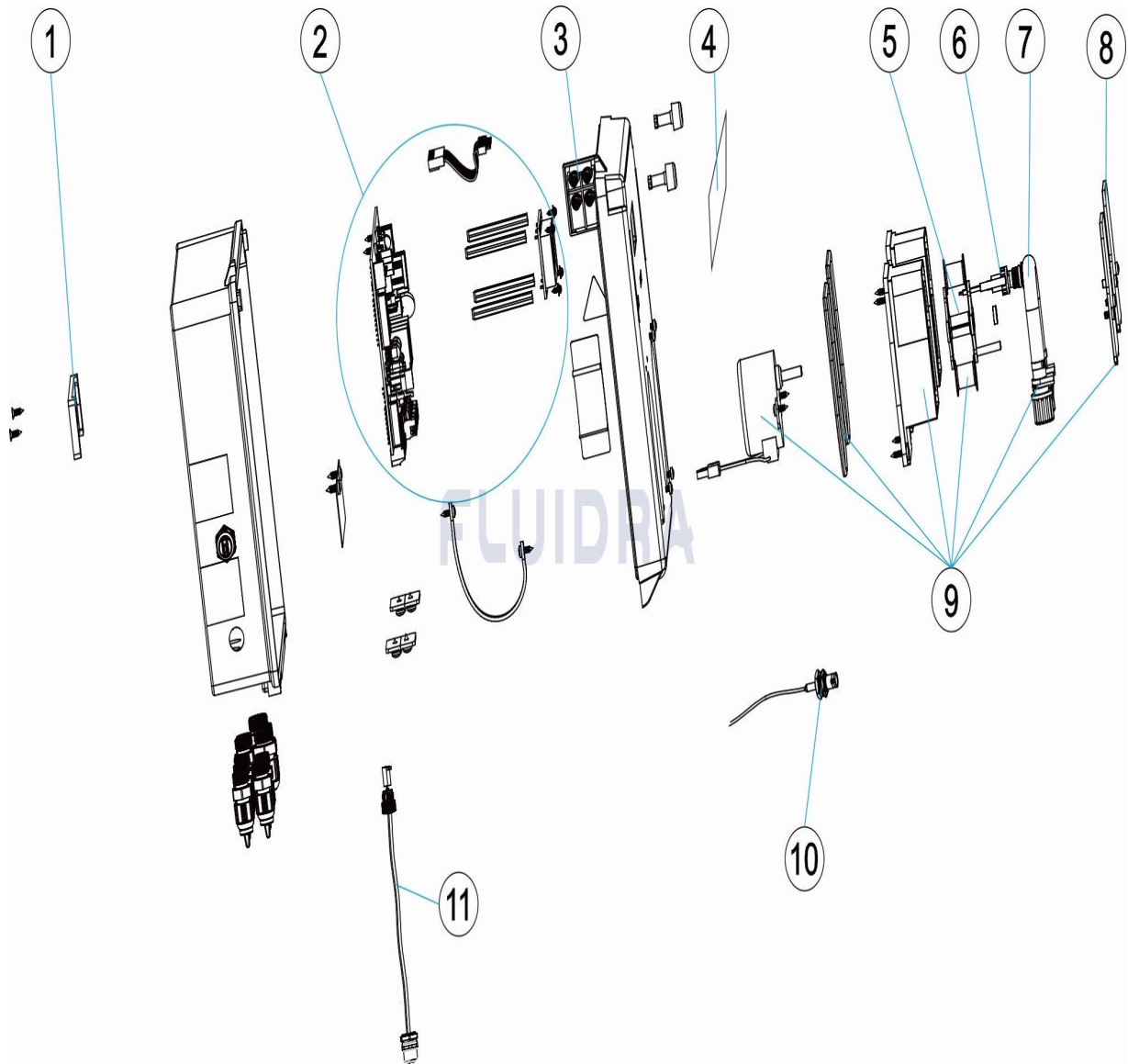
DESCRIPTION: **CONTROL BASIC DOUBLE PH-EV 0,4-1,5L/H**

OBSERVATIONS

POS	CODE	OBSERVATIONS
2	* ON-DEMAND	POUR: 66180
2	* ON-DEMAND	POUR: 66181
2	* 64983R0002	POUR: 66158
5	* 66158R0001	POUR: 66158, 66181
5	* 57129R0005	POUR: 66180
7	* 27883R0000	POUR: 66158, 66181
7	* 57129R0004	POUR: 66180
9	* 66158R0002	POUR: 66158, 66181
9	* 64983R0009	POUR: 66180
10	* 57129R0007	POUR: 66180, 66181
10	* 64983R0006	POUR: 66158
11	* 66159R0009	POUR: 66180, 66181

CODE **66158, 66180, 66181**

DESCRIPTION: **CONTROL BASIC DOUBLE PH-EV 0,4-1,5L/H**



ENGLISH

POS	CODE	DESCRIPTION	QUANTITY	POS	CODE	DESCRIPTION	QUANTITY
1	64983R0001	ÉQUERRE SUPPORT		7	* 27883R0000	SANTOPRENE TUBE 0,4L/H. CO	
2	* ON-DEMAND	CONSULT YOUR SUPPLIER		7	* 57129R0004	PERISTALTIC TUBE	
2	* ON-DEMAND	CONSULT YOUR SUPPLIER		8	64983R0005	COUVERCLE FRONTAL	
2	* 64983R0002	CIRCUIT ELECTRONIQUE		9	* 66158R0002	PERI PUMP 0,4 L/H	
3	64983R0003	INTERRUPTEUR ALIMENTATION		9	* 64983R0009	PERI PUMP 1,5 L/H	
4	64983R0004	KEYPAD		10	* 57129R0007	COAXIAL CABLE RG174A/U 20CM	
5	* 66158R0001	SUPPORT GALETS		10	* 64983R0006	CABLE COAXIAL RG174A/U 20CM	
5	* 57129R0005	COMPLETE ROLLER HOLDER		11	* 66159R0009	CABLE L=35CM	
6	57131R0004	RED LAMP					

CODE **66158, 66180, 66181**

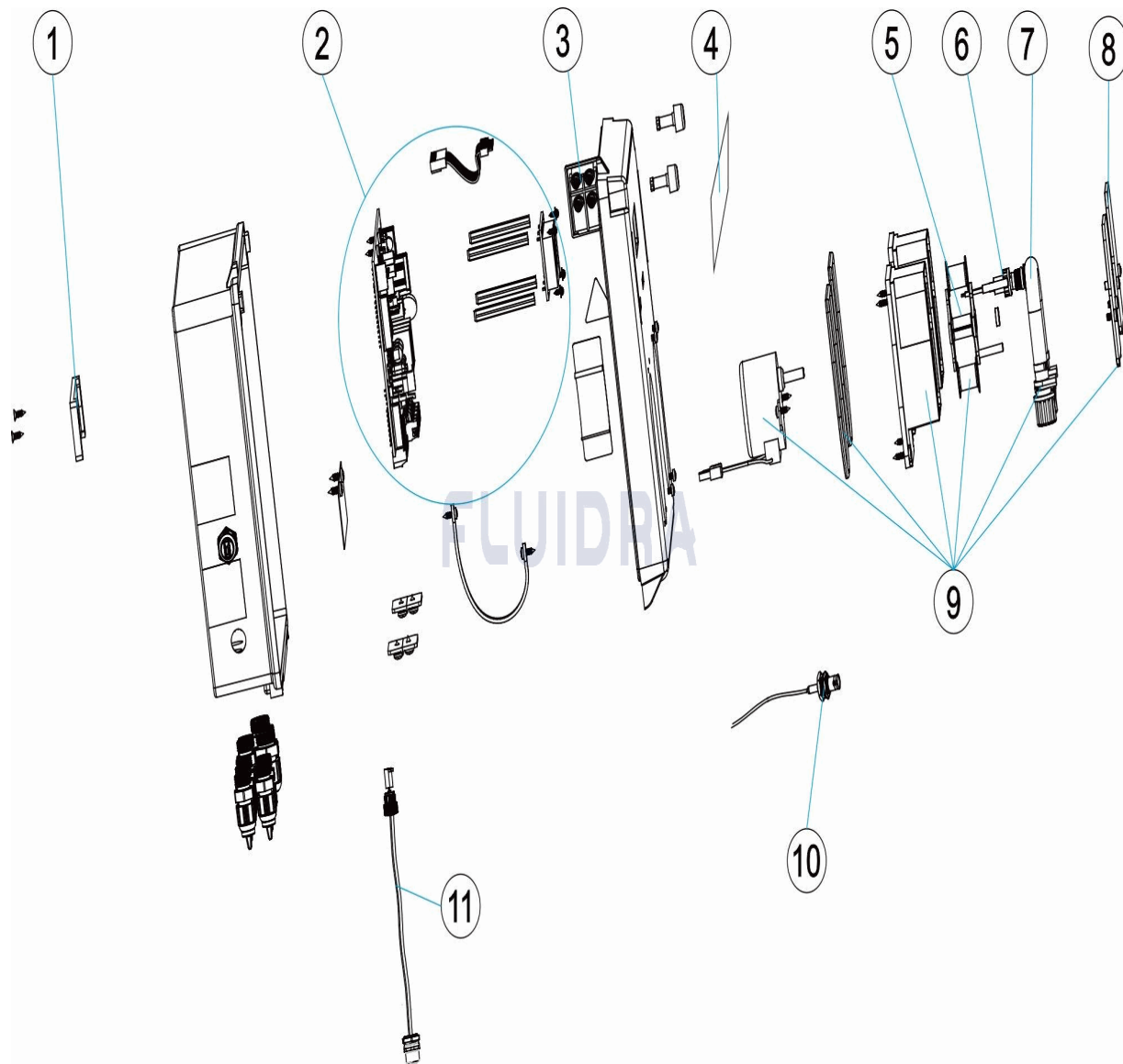
DESCRIPTION: **CONTROL BASIC DOUBLE PH-EV 0,4-1,5L/H**

OBSERVATIONS

POS	CODE	OBSERVATIONS
2	* ON-DEMAND	FOR: 66180
2	* ON-DEMAND	FOR: 66181
2	* 64983R0002	FOR: 66158
5	* 66158R0001	FOR: 66158, 66181
5	* 57129R0005	FOR: 66180
7	* 27883R0000	FOR: 66158, 66181
7	* 57129R0004	FOR: 66180
9	* 66158R0002	FOR: 66158, 66181
9	* 64983R0009	FOR: 66180
10	* 57129R0007	FOR: 66180, 66181
10	* 64983R0006	FOR: 66158
11	* 66159R0009	FOR: 66180, 66181

CODICE 66158, 66180, 66181

DESCRIZIONE: CONTROL BASIC DOUBLE PH-EV 0,4-1,5L/H



ITALIANO

POS	CODICE	DESCRIZIONE	QUANTITA'	POS	CODICE	DESCRIZIONE	QUANTITA'
1	64983R0001	MOUNTING BRACKET		7	* 27883R0000	TUBO SANTOPRENE 0,4L/H. CO	
2	* ON-DEMAND	CONSULTA IL TUO FORNITORE		7	* 57129R0004	TUBO PERISTALTICO	
2	* ON-DEMAND	CONSULTA IL TUO FORNITORE		8	64983R0005	PERISTALTIC LID	
2	* 64983R0002	ELECTRONIC CIRCUIT		9	* 66158R0002	PERI PUMP 0,4 L/H	
3	64983R0003	POWER SWITCH		9	* 64983R0009	POMPA PERISTALTICA 1,5 L/H	
4	64983R0004	TASTIERA		10	* 57129R0007	CAVO COASSIALE RG174A/U 20CM	
5	* 66158R0001	COMPLETE ROLLER HOLDER		10	* 64983R0006	COAXIAL CABLE RG174A/U 20CM	
5	* 57129R0005	PORTA RULLO		11	* 66159R0009	CAVO L=35CM	
6	57131R0004	LAMPADA ROSSA					

CODICE **66158, 66180, 66181**

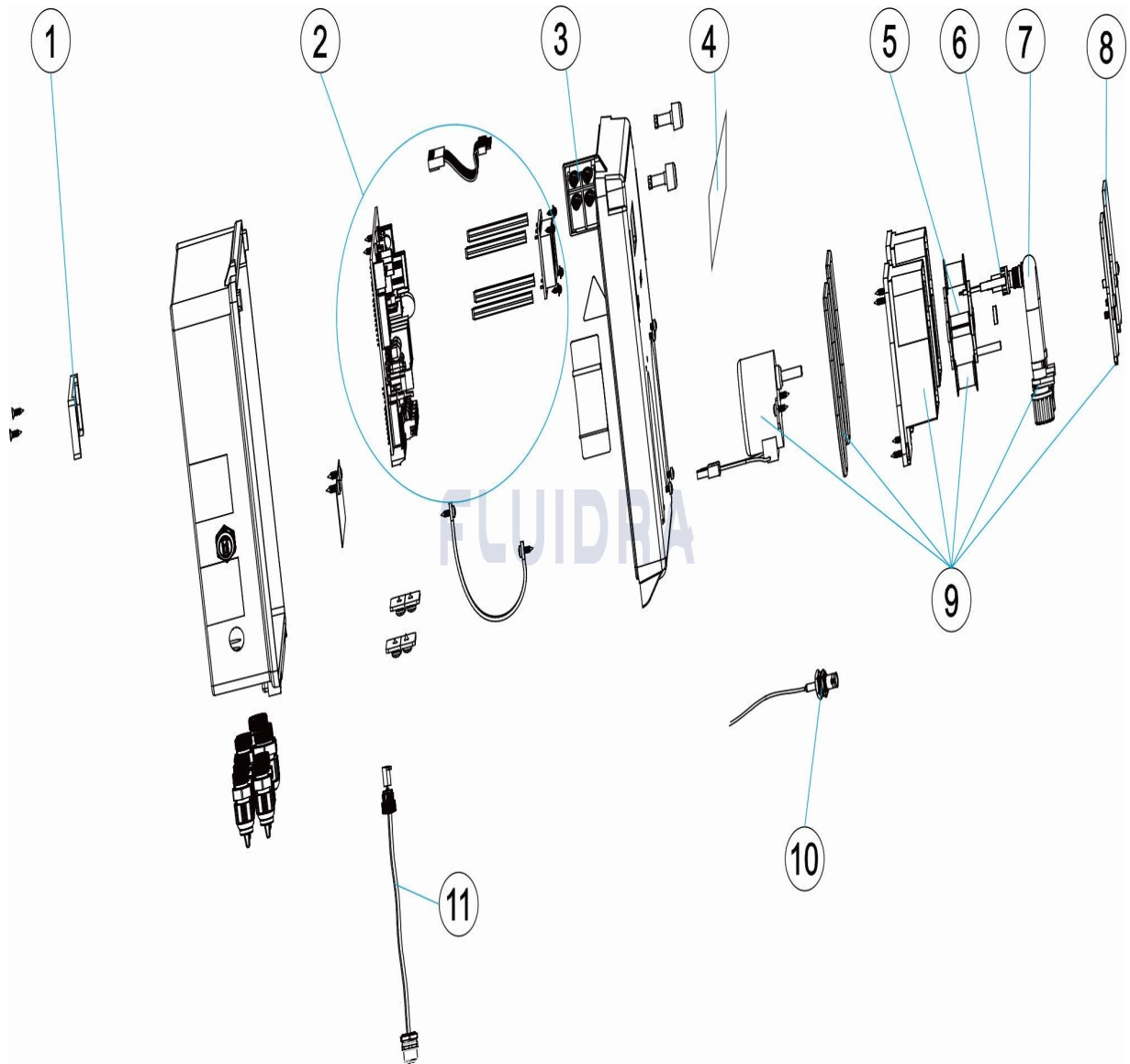
DESCRIZIONE: **CONTROL BASIC DOUBLE PH-EV 0,4-1,5L/H**

OSSERVAZIONI

POS	CODICE	OSSERVAZIONI
2	* ON-DEMAND	PER: 66180
2	* ON-DEMAND	PER: 66181
2	* 64983R0002	PER: 66158
5	* 66158R0001	PER: 66158, 66181
5	* 57129R0005	PER: 66180
7	* 27883R0000	PER: 66158, 66181
7	* 57129R0004	PER: 66180
9	* 66158R0002	PER: 66158, 66181
9	* 64983R0009	PER: 66180
10	* 57129R0007	PER: 66180, 66181
10	* 64983R0006	PER: 66158
11	* 66159R0009	PER: 66180, 66181

CODE **66158, 66180, 66181**

BESCHREIBUNG: **CONTROL BASIC DOUBLE PH-EV 0,4-1,5L/H**



DEUTSCH

POS	CODE	BESCHREIBUNG	MENGE	POS	CODE	BESCHREIBUNG	MENGE
1	64983R0001	SUPPORTO A SQUADRA		7	* 27883R0000	SANTOPRENSCHLAUCH 0,4L/H. CO	
2	* ON-DEMAND	KONTROLLIEREN SIE IHREN LIEFERANTE!		7	* 57129R0004	PERISTALTIKSCHLAUCH	
2	* ON-DEMAND	KONTROLLIEREN SIE IHREN LIEFERANTE!		8	64983R0005	COPERCHIO FRONTALE	
2	* 64983R0002	CIRCUITO ELETTRONICO		9	* 66158R0002	POMPA PERISTALTICA 0,4 L/H	
3	64983R0003	INTERRUTTORE D"ALIMENTAZIONE		9	* 64983R0009	PERISTALTIKPUMPE 1,5 L/H	
4	64983R0004	TASTATUR		10	* 57129R0007	KOAXIALKABEL RG174A/U 20CM	
5	* 66158R0001	PORTA RULLO		10	* 64983R0006	CAVO COASSIALE RG174A/U 20CM	
5	* 57129R0005	ROLLENTÄRGER		11	* 66159R0009	KABEL L=35CM	
6	57131R0004	ROTE LAMPE					

CODE **66158, 66180, 66181**

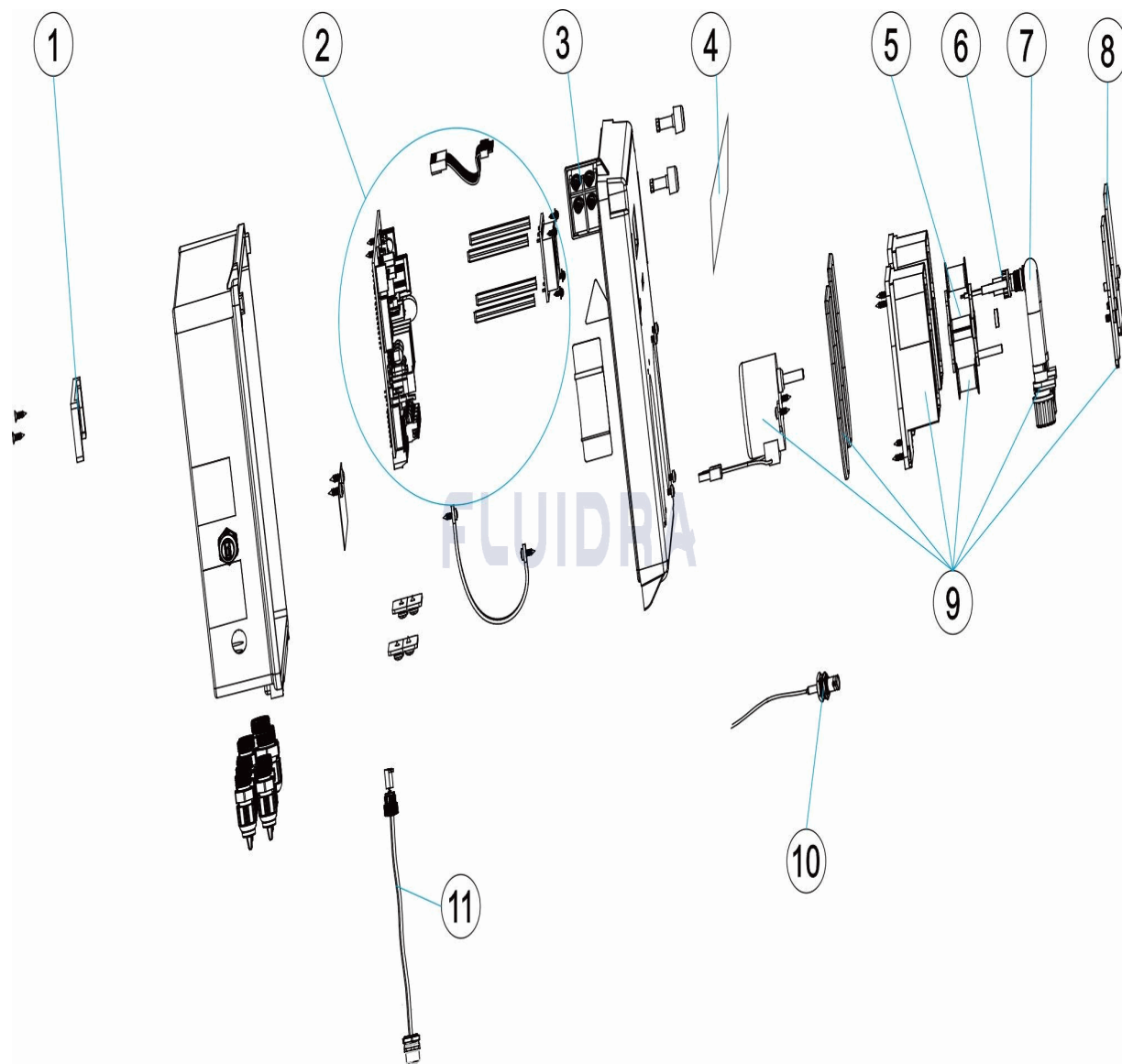
BESCHREIBUNG: **CONTROL BASIC DOUBLE PH-EV 0,4-1,5L/H**

HINWEISE

POS	CODE	HINWEISE
2	* ON-DEMAND	FÜR: 66180
2	* ON-DEMAND	FÜR: 66181
2	* 64983R0002	FÜR: 66158
5	* 66158R0001	FÜR: 66158, 66181
5	* 57129R0005	FÜR: 66180
7	* 27883R0000	FÜR: 66158, 66181
7	* 57129R0004	FÜR: 66180
9	* 66158R0002	FÜR: 66158, 66181
9	* 64983R0009	FÜR: 66180
10	* 57129R0007	FÜR: 66180, 66181
10	* 64983R0006	FÜR: 66158
11	* 66159R0009	FÜR: 66180, 66181

CODIGO **66158, 66180, 66181**

DESCRICAÇÃO: **CONTROL BASIC DOUBLE PH-EV 0,4-1,5L/H**



PORTUGUES

POS	CODIGO	DESCRICAÇÃO	JANTIDADE	POS	CODIGO	DESCRICAÇÃO	JANTIDADE
1	64983R0001	WINKEL HALTERUNG		7	* 27883R0000	TUBO DE SANTOPRENE 0,4L/H. CO	
2	* ON-DEMAND	CONSULTE SEU FORNECEDOR		7	* 57129R0004	TUBO PERISTÁLTICO	
2	* ON-DEMAND	CONSULTE SEU FORNECEDOR		8	64983R0005	FRONTALDECKEL	
2	* 64983R0002	PLATINE DOSIERPUMPE		9	* 66158R0002	PERISTALTIKpumpe 0,4 L/H	
3	64983R0003	VERSORGUNGSSCHALTER		9	* 64983R0009	BOMBA PERISTÁLTICA 1,5 L/H	
4	64983R0004	TECLADO		10	* 57129R0007	CABO COAXIAL RG174A/U 20CM	
5	* 66158R0001	ROLLENTRÄGER		10	* 64983R0006	KOAXIALKABEL RG174A/U 20CM	
5	* 57129R0005	PORTA-RODÍZIOS		11	* 66159R0009	CABO L=35CM	
6	57131R0004	LAMPADA VERMELHA					

CODIGO 66158, 66180, 66181

DESCRIÇÃO: CONTROL BASIC DOUBLE PH-EV 0,4-1,5L/H

OBSERVAÇÕES

POS	CODIGO	OBSERVAÇÕES
2	* ON-DEMAND	PARA: 66180
2	* ON-DEMAND	PARA: 66181
2	* 64983R0002	PARA: 66158
5	* 66158R0001	PARA: 66158, 66181
5	* 57129R0005	PARA: 66180
7	* 27883R0000	PARA: 66158, 66181
7	* 57129R0004	PARA: 66180
9	* 66158R0002	PARA: 66158, 66181
9	* 64983R0009	PARA: 66180
10	* 57129R0007	PARA: 66180, 66181
10	* 64983R0006	PARA: 66158
11	* 66159R0009	PARA: 66180, 66181