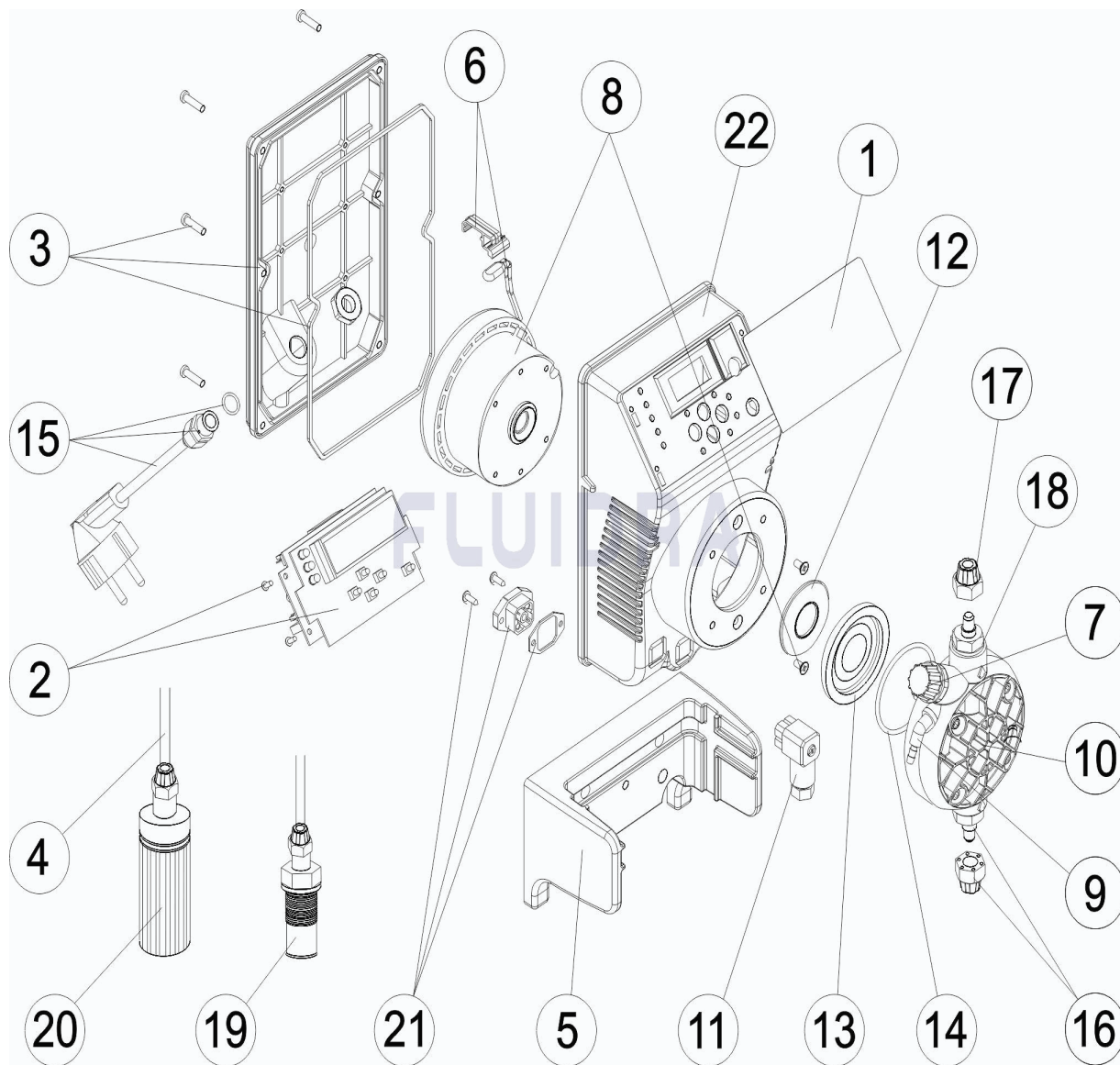


CODIGO **43498, 43499, 43500**

DESCRIPCION: **BOMBA EXACTUS CL/M**



ESPAÑOL

POS	CODIGO	DESCRIPCION	CANTIDAD	POS	CODIGO	DESCRIPCION	CANTIDAD
1	4408032701	PANEL TACTIL CL/M EXACTUS 2009		12	* 4408031121	ARANDELA PISTON 10L 5KG	
2	4408032702	CIRCUITO ELECTRONICO CL/M 2009		13	4408030119	MEMBRANA COMPLETA	
3	4408030025	TAPA POSTERIOR EXACTUS CON JUNTA		14	4408030111	JUNTA TORICA CABEZAL	
4	4408030122	TUBO ASPIRACION/IMPULSION		15	4408031221	CABLE ALIMENTACION	
5	4408032303	SOPORTE EXACTUS 2009		16	4408030112	CUERPO RACORD + DUTRAL	
6	4408032305	SOPORTE MAS TERMOSTADO 110°		16	4408030113	CUERPO RACORD + VITON	
7	4408032308	TAPON PURGA CABEZAL CP STD		16	4408030114	CUERPO RACORD + SILICONA	
8	* 4408030118	ELECTROIMAN COMPLETO 5L 7KG		17	4408030126	TUERCA SUJECCION TUBO	
8	* 4408031114	ELECTROIMAN 5L 10KG		18	4408030115	VALVULA DUTRAL + SOPORTE	
8	* 4408030517	ELECTROIMAN 10L 5KG		18	4408030116	VALVULA VITON + SOPORTE	
9	4408031203	RACOR PURGA CABEZAL		18	4408030117	VALVULA SILICONA + SOPORTE	
10	4408031205	CABEZAL COMPLETO		19	4408030121	VALVULA INYECCION COMPLETA	
11	4408031729	CONECTOR DE NIVEL		20	4408030123	FILTRO ASPIRACION COMPLETO	

*** NOTA OBSERVACIONES**

CODIGO 43498, 43499, 43500

DESCRIPCION: BOMBA EXACTUS CL/M

12	* 4408031119	ARANDELA PISTON 2L 5KG - 2L 10KG - 5L 1	21	4408032703	CONECTOR MACHO Sonda DE CLORO CL
12	* 4408030531	ARANDELA PISTON 5L 7KG	22	57174R0001	CAJA EXACTUS

CODIGO 43498, 43499, 43500

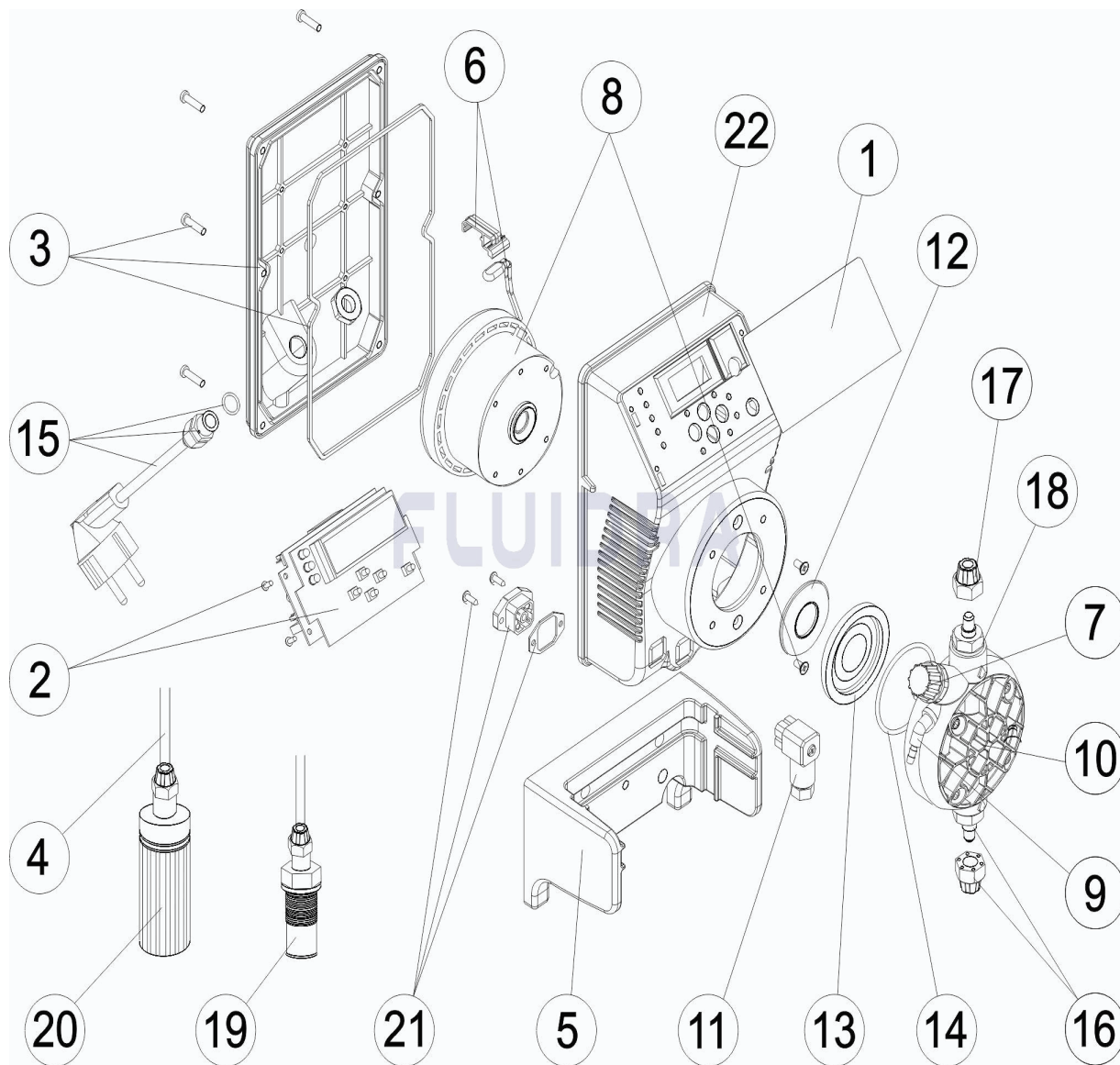
DESCRIPCION: BOMBA EXACTUS CL/M

OBSERVACIONES

POS	CODIGO	OBSERVACIONES
8	* 4408030118	PARA: 43498
8	* 4408031114	PARA: 43499
8	* 4408030517	PARA: 43500
12	* 4408031119	PARA: 43498
12	* 4408030531	PARA: 43499
12	* 4408031121	PARA: 43500

CODE 43498, 43499, 43500

DESCRIPTION: POMPE EXACTUS CL/M



FRANCAIS

POS	CODE	DESCRIPTION	QUANTITE	POS	CODE	DESCRIPTION	QUANTITE
1	4408032701	TABLEAU DE CONTROLE TACTILE CL/M E>		12	* 4408031121	RONDELLE PISTON 10L 5KG	
2	4408032702	CIRCUIT ELECTRONIQUE CL/M 2009		13	4408030119	MEMBRANE COMPLETE	
3	4408030025	COUVERCLE POMPE EXACTUS		14	4408030111	JOINT TORIQUE TETE	
4	4408030122	TUBE ASPIRATION/IMPULSION		15	4408031221	CABLE ALIMENTATION	
5	4408032303	SUPPORT DE POMPE EXACTUS 2009		16	4408030112	CORPS RACCORD + CLAPET DUTRAL	
6	4408032305	SUPPORT + THERMOSTAT DE 110 °		16	4408030113	CORPS RACCORD + CLAPET VITON	
7	4408032308	BOUCHON PURGE		16	4408030114	CORPS RACCORD + CLAPET SILICONE	
8	* 4408030118	ELECTROAIMANT COMPLETO 5L 7KG		17	4408030126	ECROU DE TUBE D'ASPIRATION	
8	* 4408031114	ELECTROAIMANT 5L 10KG		18	4408030115	CLAPET DUTRAL + SUPPORT	
8	* 4408030517	ELECTROAIMANT 10L 5KG		18	4408030116	CLAPET VITON + SUPPORT	
9	4408031203	RACCOR PURGE		18	4408030117	CLAPET SILICONA + SUPPORT	
10	4408031205	TETE COMPLET		19	4408030121	VANNE INJECTION COMPLETE	
11	4408031729	CONECTEUR DE NIVEAU		20	4408030123	FILTRE ASPIRATION COMPLETE	

* VOIR FICHE D'OBSERVATIONS

CODE **43498, 43499, 43500**

DESCRIPTION: **POMPE EXACTUS CL/M**

12	* 4408031119	RONDELLE PISTON 2L 5KG - 2L 10KG - 5L	21	4408032703	CONNECTEUR MÂLE
12	* 4408030531	RONDELLE PISTON 5L 7KG	22	57174R0001	BOITIER DE POMPE EXACTUS

CODE **43498, 43499, 43500**

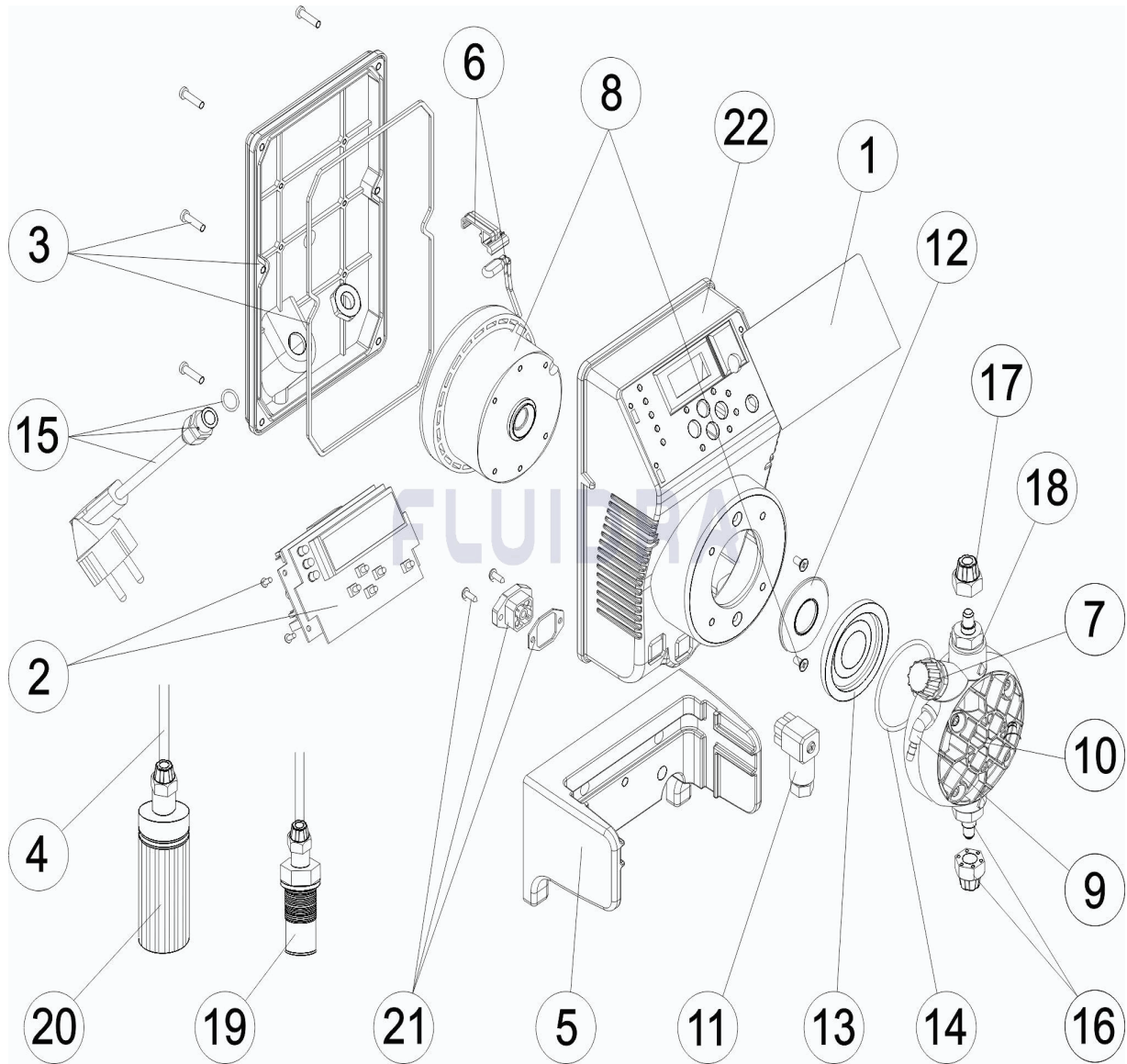
DESCRIPTION: **POMPE EXACTUS CL/M**

OBSERVATIONS

POS	CODE	OBSERVATIONS
8	* 4408030118	POUR: 43498
8	* 4408031114	POUR: 43499
8	* 4408030517	POUR: 43500
12	* 4408031119	POUR: 43498
12	* 4408030531	POUR: 43499
12	* 4408031121	POUR: 43500

CODE **43498, 43499, 43500**

DESCRIPTION: **EXACTUS PUMP CL/M**



ENGLISH

POS	CODE	DESCRIPTION	QUANTITY	POS	CODE	DESCRIPTION	QUANTITY
1	4408032701	TOUCH SCREEN PANEL CL/M 2009		12	* 4408031121	PISTON WASHER 10L 5KG	
2	4408032702	ELECTRONIC CIRCUIT CL/M 2009.		13	4408030119	DIAPHRAM COMPLETE	
3	4408030025	PUMP REAR COVER		14	4408030111	HEAD O RING	
4	4408030122	SUCTION/RETURN TUBE		15	4408031221	SUPPLY CABLE	
5	4408032303	PUMP SUPPORT 2009		16	4408030112	HEAD CONNECTOR BODY + DUTRAL	
6	4408032305	SUPPORT AND THERMOSTAT 110°		16	4408030113	HEAD CONNECTOR BODY + VITON	
7	4408032308	DRAIN PLUG		16	4408030114	HEAD CONNECTOR BODY + SILICON	
8	* 4408030118	ELECTROMAGNET ASSEMBLY COMPLETE		17	4408030126	SUCTION TUBE NUT	
8	* 4408031114	ELECTROMAGNET 5L 10KG		18	4408030115	DUTRAL VALVE + SUPPORT	
8	* 4408030517	ELECTROMAGNET 10L 5KG		18	4408030116	VITON VALVE + SUPPORT	
9	4408031203	PURGE FITTING		18	4408030117	SILICON VALVE + SUPPORT	
10	4408031205	COMPLETE HEAD ASSEMBLY		19	4408030121	INJECTOR VALVE ASSEMBLY	
11	4408031729	FEMALE CONNECTOR BCN		20	4408030123	FILTER ASSEMBLY	

*** SEE OBSERVATIONS SHEET**

CODE **43498, 43499, 43500**

DESCRIPTION: **EXACTUS PUMP CL/M**

12	* 4408031119	PISTON WASHER 2L 5KG - 2L 10KG - 5L 10l	21	4408032703	MALE CONNECTOR
12	* 4408030531	PISTON WASHER 5L 7KG	22	57174R0001	EXACTUS PUMP BOX

CODE **43498, 43499, 43500**

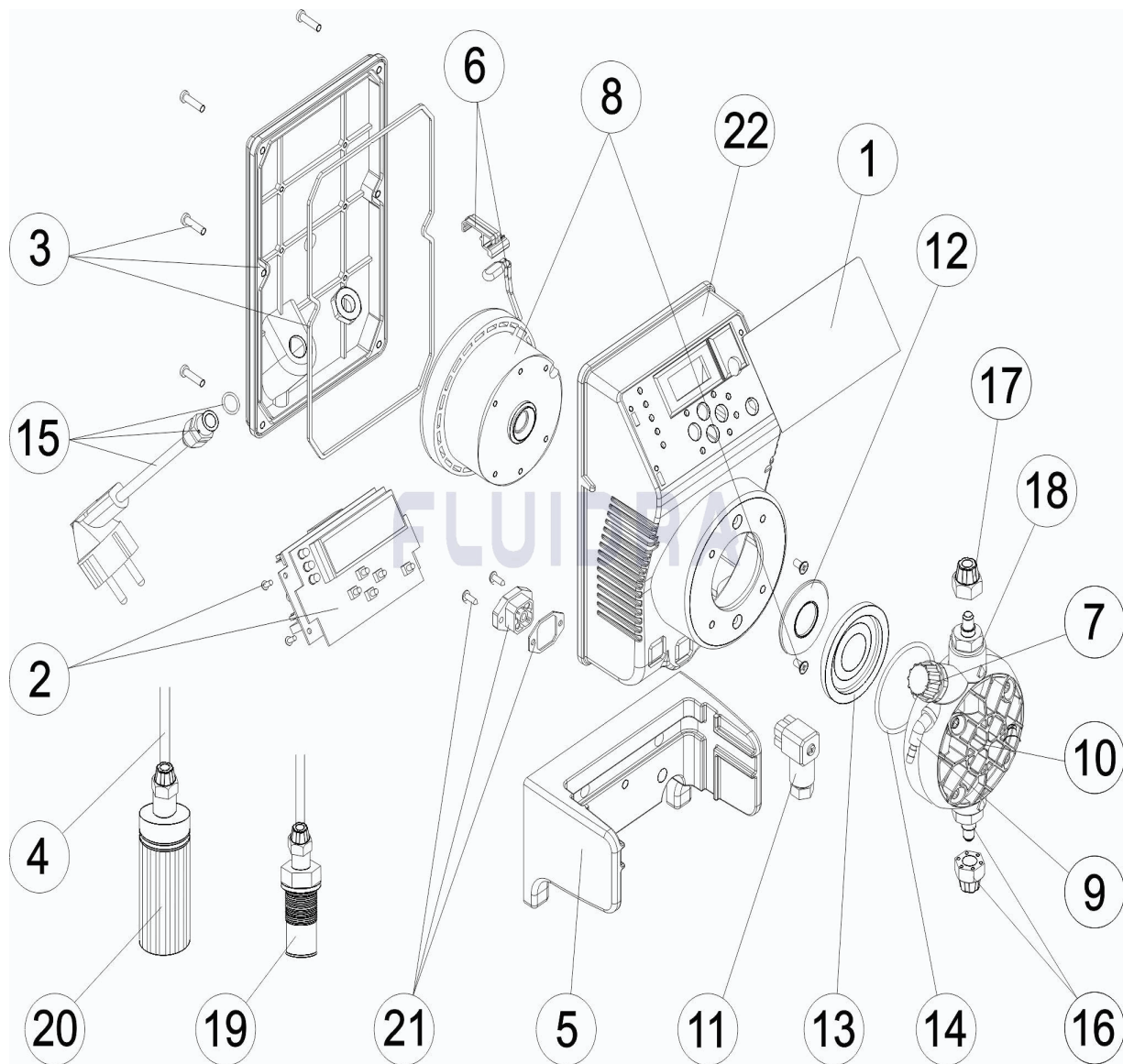
DESCRIPTION: **EXACTUS PUMP CL/M**

OBSERVATIONS

POS	CODE	OBSERVATIONS
8	* 4408030118	FOR: 43498
8	* 4408031114	FOR: 43499
8	* 4408030517	FOR: 43500
12	* 4408031119	FOR: 43498
12	* 4408030531	FOR: 43499
12	* 4408031121	FOR: 43500

CODICE 43498, 43499, 43500

DESCRIZIONE: POMPA EXACTUS CL/M



ITALIANO

POS	CODICE	DESCRIZIONE	QUANTITA'	POS	CODICE	DESCRIZIONE	QUANTITA'
1	4408032701	PANNELLO DIGITALE CL/M EXACTUS 2009		12	* 4408031121	RONDELLA PISTONE 10L 5KG	
2	4408032702	CIRCUITO ELETTRONICO CL/M 2009		13	4408030119	MEMBRANA COMPLETA	
3	4408030025	COPRIVENTOLA POMPA EXACTUS		14	4408030111	O-RING PER TESTA	
4	4408030122	TUBO DI ASPIRAZIONE/ MANDATA		15	4408031221	CAVO DI ALIMENTAZIONE	
5	4408032303	SUPPORTO POMPA EXACTUS 2009		16	4408030112	CORPO RACCORDO + VALVOLA IN DUTRAL	
6	4408032305	SUPPORTO + TERMOSTATO 110°		16	4408030113	CORPO RACCORDO + VALVOLA IN VITON	
7	4408032308	TAPPO SPURGO		16	4408030114	CORPO RACCORDO + VALVOLA IN SILICON	
8	* 4408030118	ELETTROCALAMITA COMPLETA 5L 7KG		17	4408030126	GHIERA FISSAGGIO TUBO	
8	* 4408031114	ELETTROCALAMITA 5L 10KG		18	4408030115	VALVOLA DUTRAL + SUPPORTO	
8	* 4408030517	ELETTROCALAMITA 10L 5KG		18	4408030116	VALVOLA + SUPPORTO	
9	4408031203	RACORDO SCARIO		18	4408030117	VALVOLA SILICONE + SUPPORTO	
10	4408031205	TESTA COMPLETA		19	4408030121	VALVOLA INIEZIONE COMPLETA	
11	4408031729	CONNETTORE DI LIVELLO		20	4408030123	FILTRO ASPIRAZIONE COMPLETO	

* SI FACCIA RIFERIMENTO AL FOGLIO DELLE OSSERVAZIONI

CODICE **43498, 43499, 43500**

DESCRIZIONE: **POMPA EXACTUS CL/M**

12	* 4408031119	RONDELLA PISTONE 2L 5KG - 2L 10KG - 5L	21	4408032703	CONNETTORE MASCHIO
12	* 4408030531	RONDELLA PISTONE 5L 7KG	22	57174R0001	CASSA POMPA EXACTUS

CODICE **43498, 43499, 43500**

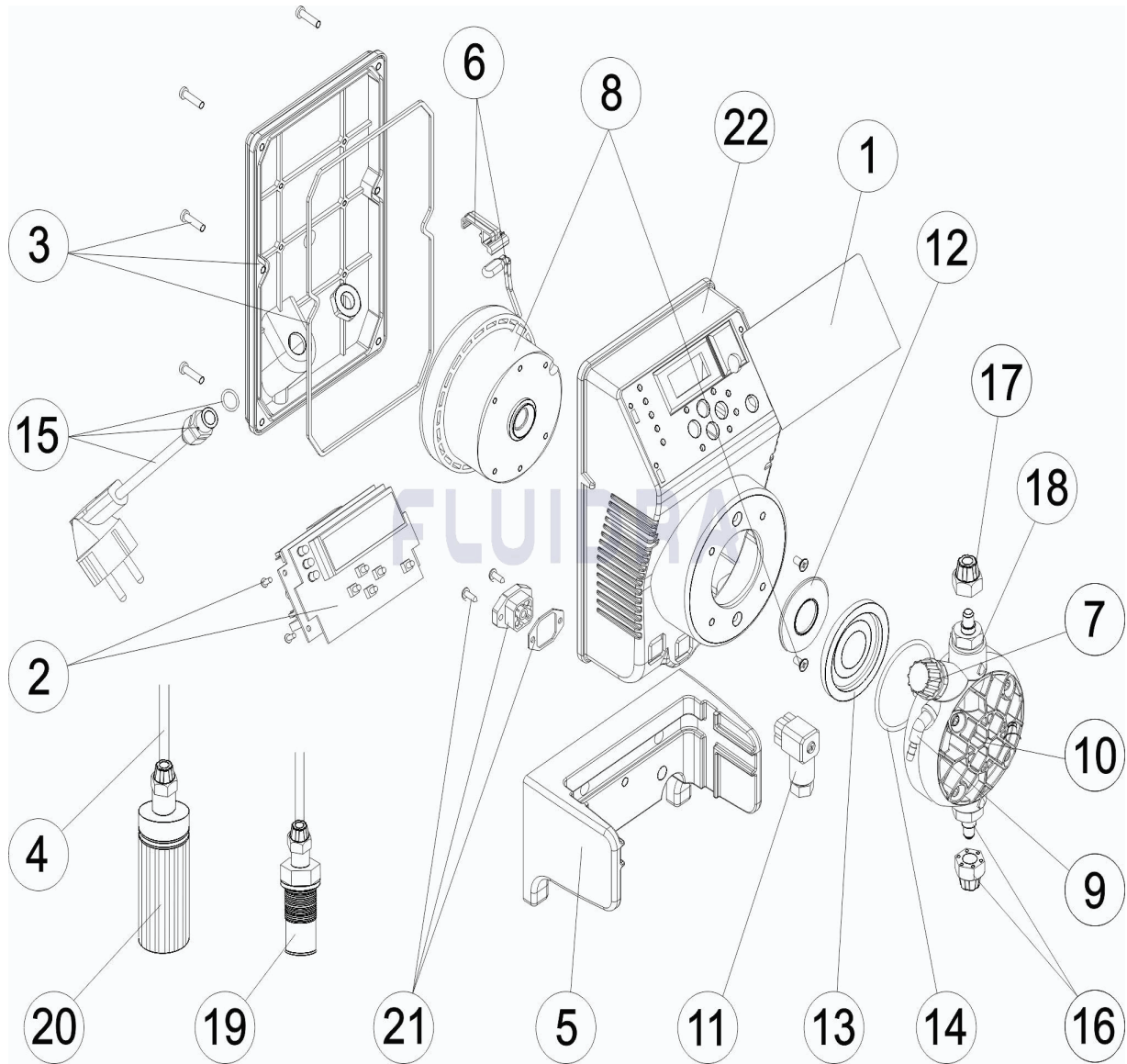
DESCRIZIONE: **POMPA EXACTUS CL/M**

OSSERVAZIONI

POS	CODICE	OSSERVAZIONI
8	* 4408030118	PER: 43498
8	* 4408031114	PER: 43499
8	* 4408030517	PER: 43500
12	* 4408031119	PER: 43498
12	* 4408030531	PER: 43499
12	* 4408031121	PER: 43500

CODE **43498, 43499, 43500**

BESCHREIBUNG: **PUMPE EXACTUS CL/M**



DEUTSCH

POS	CODE	BESCHREIBUNG	MENGE	POS	CODE	BESCHREIBUNG	MENGE
1	4408032701	TOUCHSCREEN CL/M EXACTUS 2009		12	* 4408031121	KOLBENSCHEIBE 10 L 5 KG	
2	4408032702	PLATINE SCHALTKREIS CL/M 2009		13	4408030119	KOMPLETTMEMBERAN	
3	4408030025	ABDECKUNG HINTEN EXACTUS UND DICHT		14	4408030111	O-RING KOPFSTÜCK	
4	4408030122	ROHR SAUG/DRUCK		15	4408031221	VERSORUNGSKABEL	
5	4408032303	HALTERUNG EXACTUS 2009		16	4408030112	VENTILSATZ MIT DUTRAL	
6	4408032305	HALTERUNG UND TERMOSTAT 110°		16	4408030113	VENTILSATZ MIT VITON	
7	4408032308	ABLASSSTOPFEN KOPFSTÜCK CP STD		16	4408030114	VENTILSATZ MIT SILIKON	
8	* 4408030118	ELEKTROMAGNET KOMPLETT 5 L 7 KG		17	4408030126	MUTTER BEFESTIGUNG ROHR	
8	* 4408031114	ELEKTROMAGNET 5 L 10 KG		18	4408030115	VENTIL DUTRAL MIT HALTERUNG	
8	* 4408030517	ELEKTROMAGNET 10 L 5 KG		18	4408030116	VENTIL VITON MIT HALTERUNG	
9	4408031203	GEWINDE ABLASS KOPFSTÜCK		18	4408030117	VENTIL SILIKON MIT HALTERUNG	
10	4408031205	KOPFSTÜCK KOMPLETT		19	4408030121	INJEKTORVENTIL KOMPLETT	
11	4408031729	VERBINDUNGSSTÜCK FÜLLSTAND		20	4408030123	SAUGFILTER KOMPLETT	

* SIEHE ANMERKUNGSBLATT

CODE **43498, 43499, 43500**

BESCHREIBUNG: **PUMPE EXACTUS CL/M**

12	* 4408031119	KOLBENSCHIEBE 2 L 5 KG - 2 L 10 KG - 5 L	21	4408032703	STECKER CHLORSONDE CL/M
12	* 4408030531	KOLBENSCHIEBE 5 L 7 KG	22	57174R0001	GEHÄUSE EXACTUS

CODE **43498, 43499, 43500**

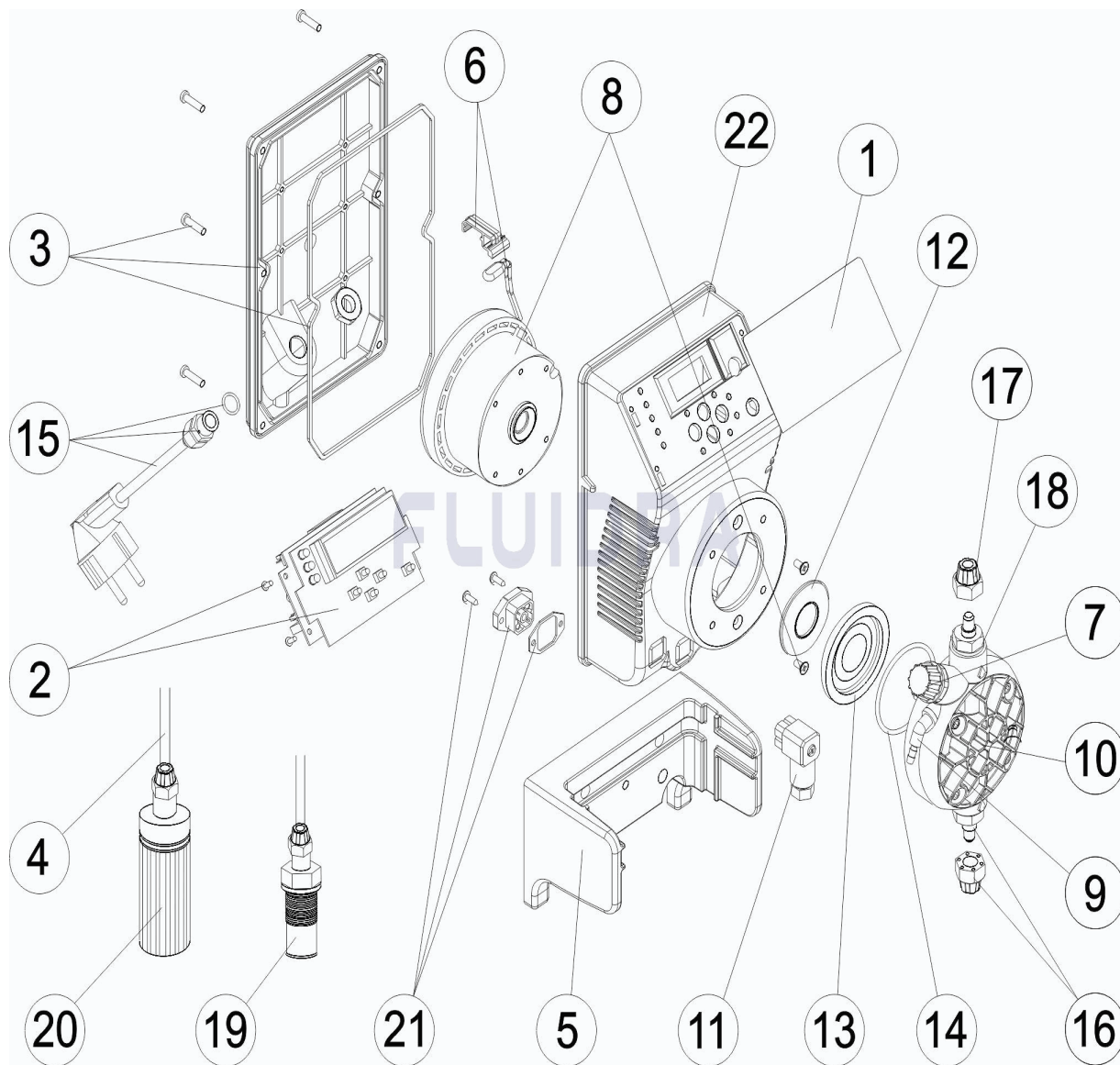
BESCHREIBUNG: **PUMPE EXACTUS CL/M**

HINWEISE

POS	CODE	HINWEISE
8	* 4408030118	FÜR: 43498
8	* 4408031114	FÜR: 43499
8	* 4408030517	FÜR: 43500
12	* 4408031119	FÜR: 43498
12	* 4408030531	FÜR: 43499
12	* 4408031121	FÜR: 43500

CODIGO **43498, 43499, 43500**

DESCRIÇÃO: **BOMBA EXACTUS CL/M**



PORTUGUES

POS	CODIGO	DESCRIÇÃO	JANTIDADE	POS	CODIGO	DESCRIÇÃO	JANTIDADE
1	4408032701	PAINEL DIGITAL TÁCTIL CL/M EXACTUS 20"		12	* 4408031121	ANILHA PISTON 10L 5KG	
2	4408032702	CIRCUITO ELECTRONICO CL/M 2009		13	4408030119	MEMBRANA COMPLETA	
3	4408030025	TAMPA TRASEIRA BOMBA EXACTUS		14	4408030111	JUNTA TORICA CABEÇAL	
4	4408030122	TUBO ASPIRAÇÃO/IMPULSÃO		15	4408031221	CABO ALIMENTAÇÃO	
5	4408032303	SUPORTE BOMBA EXACTUS 2009		16	4408030112	CORPO RACORD + DUTRAL	
6	4408032305	SUPORTE MAIS TERMOSTATO DE 110°		16	4408030113	CORPO RACORD + VITON	
7	4408032308	TAMPÃO PURGA		16	4408030114	CORPO RACORD + SILICONE	
8	* 4408030118	ELECTROI MAN COMPLETO 5L 7KG		17	4408030126	PORCA SUJEIÇÃO TUBO	
8	* 4408031114	ELECTROI MAN 5L 10KG		18	4408030115	VÁLVULA DUTRAL + SUPORTE	
8	* 4408030517	ELECTROI MAN 10L 5KG		18	4408030116	VÁLVULA VITON + SUPORTE	
9	4408031203	RACCORD PURGA		18	4408030117	VÁLVULA SILICONE + SUPORTE	
10	4408031205	CABEÇAL COMPLETO		19	4408030121	INJECTOR COMPLETO	
11	4408031729	LIGAÇÃO NIVEL		20	4408030123	FILTRO ASPIRAÇÃO COMPLETO	

*** VEJA A FICHA DE OBSERVAÇÕES**

CODIGO 43498, 43499, 43500

DESCRIÇÃO: BOMBA EXACTUS CL/M

12	* 4408031119	ANILHA PISTON 2L 5KG - 2L 10KG - 5L 10K	21	4408032703	LIGAÇÃO MACHO
12	* 4408030531	ANILHA PISTON 5L 7KG	22	57174R0001	CAIXA BOMBA EXACTUS

CODIGO **43498, 43499, 43500**

DESCRIÇÃO: **BOMBA EXACTUS CL/M**

OBSERVAÇÕES

POS	CODIGO	OBSERVAÇÕES
8	* 4408030118	PARA: 43498
8	* 4408031114	PARA: 43499
8	* 4408030517	PARA: 43500
12	* 4408031119	PARA: 43498
12	* 4408030531	PARA: 43499
12	* 4408031121	PARA: 43500