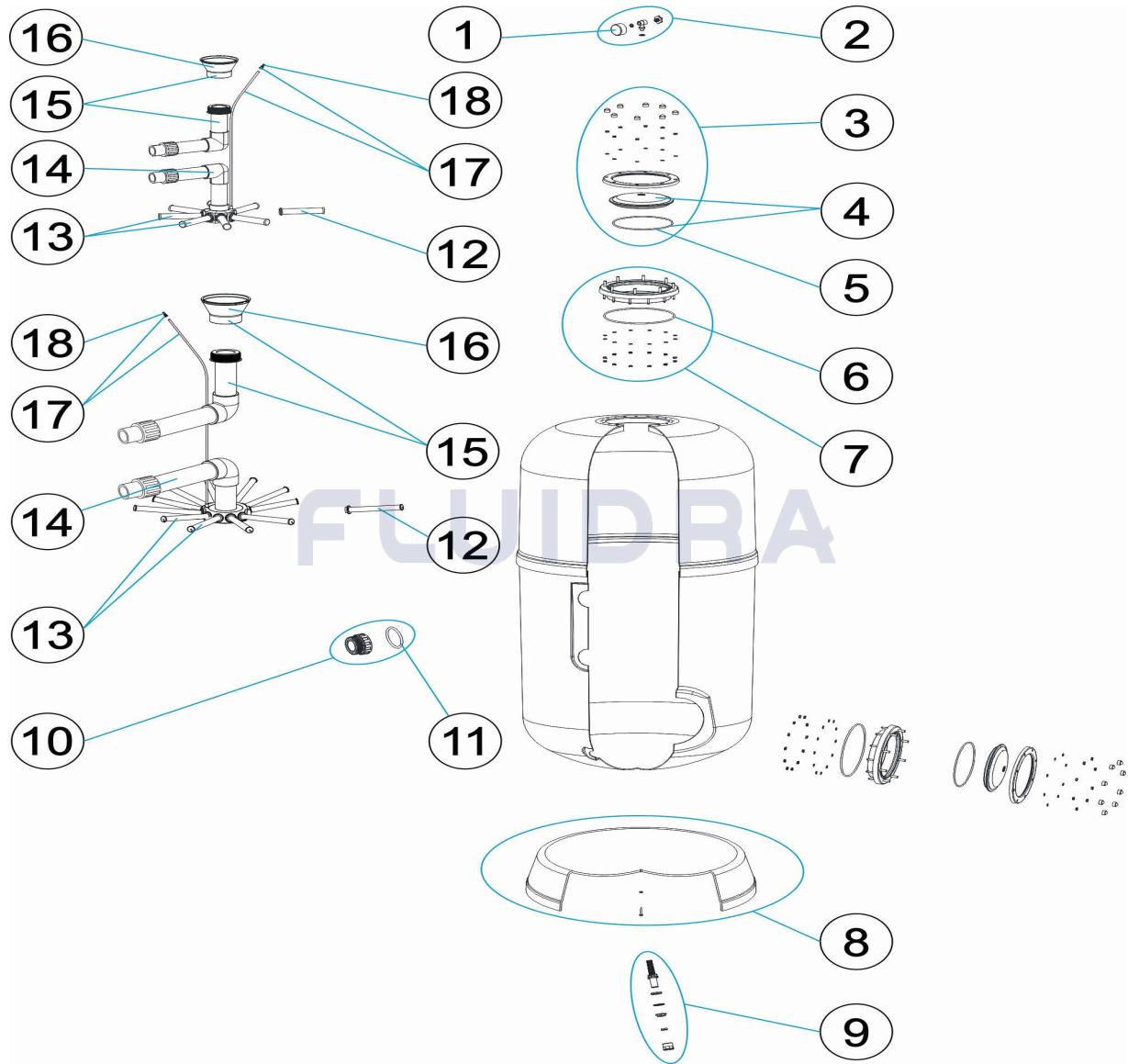


CODIGO **FS10-500, FS10-600, FS10-750, FS10-900**

 DESCRIPCION: **FILTRO LISBOA HIGH PERFORMANCE**

ESPAÑOL

POS	CODIGO	DESCRIPCION	CANTIDAD	POS	CODIGO	DESCRIPCION	CANTIDAD
1	SP-04-0072	MANOMETRO 1/8" 3 KG/C "		12	* SP-04-0148	BRAZO COLECTOR 1" 110 M "	
2	SP-04-0071	MANOMETRO COMPLETO		12	* SP-04-0149	BRAZO COLECTOR 1" 175 M "	
3	SP-04-0310	GRUPO TAPA NEGRA FILTRO A/TORNILLO		12	* SP-04-0147	BRAZO COLECTOR 1" 225 M "	
4	SP-04-0306	TAPA FILTRO D. 220 NEGRA		12	* SP-04-0150	BRAZO COLECTOR 1" 265 M "	
5	SP-04-0189	JUNTA ARO FIJACION VALVULA		13	* SP-04-0151	CJTO. BRAZOS COLECTOR D. 400	
6	SP-04-0134	JUNTA TORICA 255X4		13	* SP-04-0152	CJTO. BRAZOS COLECTOR	
7	SP-04-0133	ARO CUELLO 20 TORNILLOS		13	* SP-04-0201	CJTO. BRAZOS COLECTOR D. 650	
8	* SP-04-0137	PIE FILTRO		13	* SP-04-0154	CJTO. BRAZOS COLECTOR D. 750	
8	* SP-04-0428	PIE FILTRO D. 650		14	* SP-04-0435	CJTO. COLECTOR D. 500	
8	* SP-04-0429	PIE FILTRO D. 800		14	* SP-04-0432	CJTO. COLECTOR D. 600	
8	* SP-04-0430	PIE FILTRO D. 950		14	* SP-04-0433	CJTO. COLECTOR D. 750	
9	SP-04-0237	CREPINA PURGA 3/8"		14	* SP-04-0434	CJTO. COLECTOR D.900	
10	* SP-04-0142	RACORD 1 1/2" + JUNTA TORIC "		15	* SP-04-0431	CJTO. DIFUSOR D. 500	



KIT

REV: 0

9162

FECHA: 07/06/2022

HOJA: 2/3

CODIGO **FS10-500, FS10-600, FS10-750, FS10-900**DESCRIPCION: **FILTRO LISBOA HIGH PERFORMANCE**

10	* SP-04-0143	RACORD SALIDA 2" + JUNTA TORIC "	15	* SP-04-0436	CJTO. DIFUSOR D. 600
11	SP-04-0253	JUNTA TORICA D. 60X8	15	* SP-04-0437	CJTO. DIFUSOR D. 750
15	* SP-04-0438	CJTO. DIFUSOR D.900	17	SP-04-0184	PURGA AIRE + TUBO L=670
16	* SP-04-0180	CONO DIFUSOR D.50	18	SP-04-0129	PURGA AIRE
16	* SP-04-0181	CONO DIFUSOR D. 63			



KIT

REV: 0
FECHA: 07/06/2022
HOJA: 3/3

9162

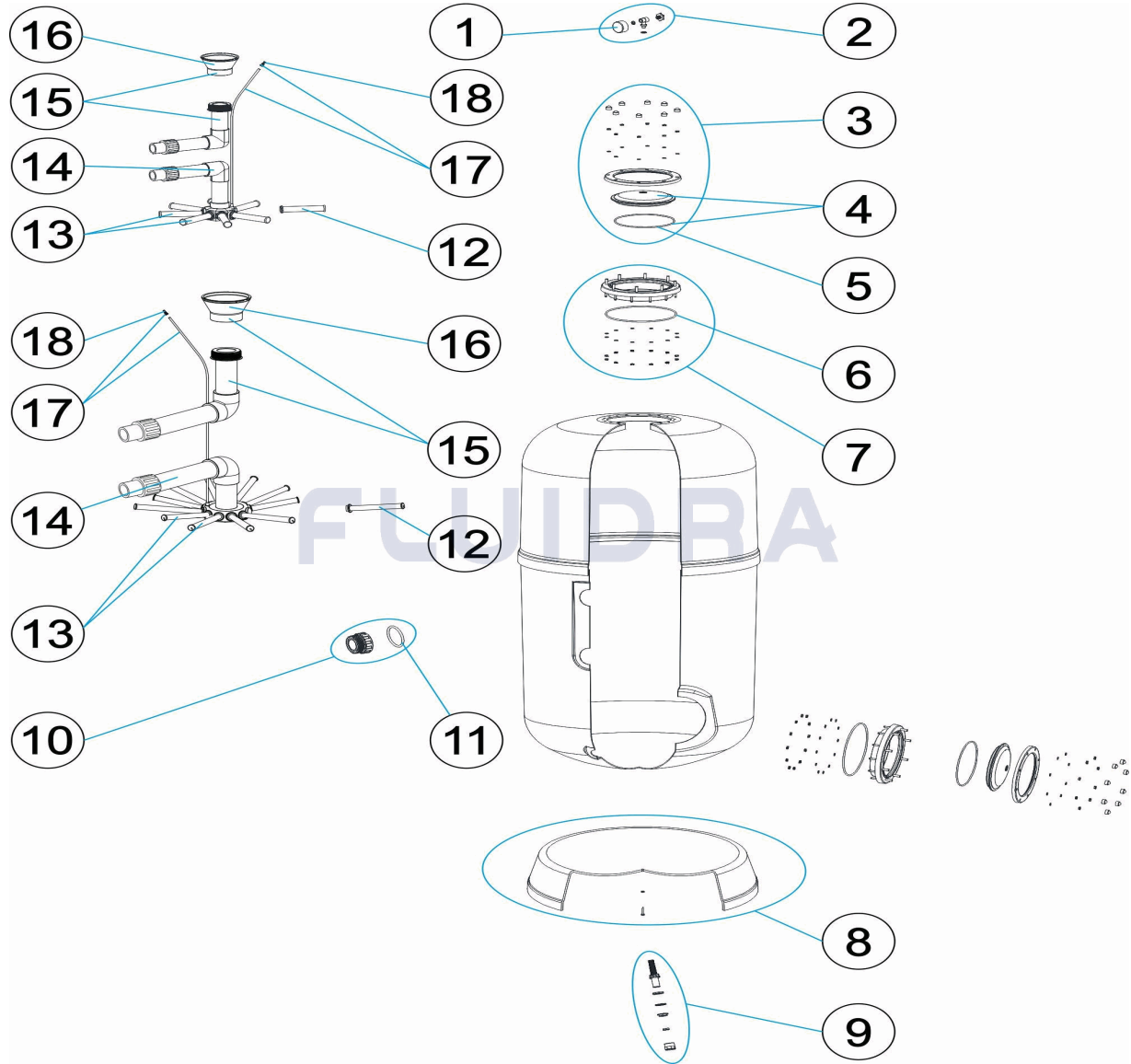
CODIGO **FS10-500, FS10-600, FS10-750, FS10-900**

DESCRIPCION: **FILTRO LISBOA HIGH PERFORMANCE**

OBSERVACIONES

POS	CODIGO	OBSERVACIONES
8	* SP-04-0137	PARA: FS10-500
8	* SP-04-0428	PARA: FS10-600
8	* SP-04-0429	PARA: FS10-750
8	* SP-04-0430	PARA: FS10-900
10	* SP-04-0142	PARA: FS10-500, FS10-600
10	* SP-04-0143	PARA: FS10-750, FS10-900
12	* SP-04-0148	PARA: FS10-500 [4UNIDADES]
12	* SP-04-0149	PARA: FS10-600 [4UNIDADES]
12	* SP-04-0147	PARA: FS10-750 [6UNIDADES]
12	* SP-04-0150	PARA: FS10-900 [6UNIDADES]
13	* SP-04-0151	PARA: FS10-500
13	* SP-04-0152	PARA: FS10-600
13	* SP-04-0201	PARA: FS10-750
13	* SP-04-0154	PARA: FS10-900
14	* SP-04-0435	PARA: FS10-500
14	* SP-04-0432	PARA: FS10-600
14	* SP-04-0433	PARA: FS10-750
14	* SP-04-0434	PARA: FS10-900
15	* SP-04-0431	PARA: FS10-500
15	* SP-04-0436	PARA: FS10-600
15	* SP-04-0437	PARA: FS10-750
15	* SP-04-0438	PARA: FS10-900
16	* SP-04-0180	PARA: FS10-500, FS10-600
16	* SP-04-0181	PARA: FS10-750, FS10-900

CODE **FS10-500, FS10-600, FS10-750, FS10-900**

 DESCRIPTION: **FILTRE LISBOA HIGH PERFORMANCE**


FRANCAIS

POS	CODE	DESCRIPTION	QUANTITE	POS	CODE	DESCRIPTION	QUANTITE
1	SP-04-0072	MANOMETRE 1/8" 3 KG./C "		12	* SP-04-0148	BRAS DE REPARTITEUR 1" 110 M "	
2	SP-04-0071	MANOMETRE COMPLET		12	* SP-04-0149	BRAS DE REPARTITEUR 1" 175 M "	
3	SP-04-0310	ENSEMBLE COUVERCLE		12	* SP-04-0147	BRAS DE REPARTITEUR 1" 225 M "	
4	SP-04-0306	COUVERCLE FILTRE D. 220 NOIR		12	* SP-04-0150	BRAS DE REPARTITEUR 1" 265 M/M "	
5	SP-04-0189	JOINT BRIDE FIXATION VANNE TOP		13	* SP-04-0151	ENSEMBLE BRAS DE REPARTITEUR D. 400	
6	SP-04-0134	JOINT TORIQUE 255X4		13	* SP-04-0152	ENSEMBLE BRAS DE REPARTITEUR	
7	SP-04-0133	BRIDE GORGE 20 VIS		13	* SP-04-0201	ENSEMBLE BRAS DE REPARTITEUR D. 650	
8	* SP-04-0137	SOCLE FILTRE		13	* SP-04-0154	ENSEMBLE BRAS DE REPARTITEUR D. 750	
8	* SP-04-0428	SOCLE FILTRE D. 650		14	* SP-04-0435	ENSEMBLE COLLECTEUR D. 500	
8	* SP-04-0429	SOCLE FILTRE D. 800		14	* SP-04-0432	ENSEMBLE COLLECTEUR D. 600	
8	* SP-04-0430	SOCLE FILTRE D. 950		14	* SP-04-0433	ENSEMBLE COLLECTEUR D. 750	
9	SP-04-0237	CREPINE DE PURGE 3/8'		14	* SP-04-0434	ENSEMBLE COLLECTEUR D. 900	
10	* SP-04-0142	RACCORD 1 1/2" + JOINT TORIQU "		15	* SP-04-0431	ENSEMBLE DIFFUSEUR D. 500	



ÉCLATÉ

REV.: 0

9162

DATE: 07/06/2022

PAG.: 2/3

CODE **FS10-500, FS10-600, FS10-750, FS10-900**DESCRIPTION: **FILTRE LISBOA HIGH PERFORMANCE**

10	* SP-04-0143	RACCORD SORTIE 2" + JOINT TORIQU *	15	* SP-04-0436	ENSEMBLE DIFFUSEUR D. 600
11	SP-04-0253	JOINT TORIQUE D 60X8	15	* SP-04-0437	ENSEMBLE DIFFUSEUR D. 750
15	* SP-04-0438	ENSEMBLE DIFFUSEUR D.900	17	SP-04-0184	PURGE AIR + TUBE L=670
16	* SP-04-0180	DIFUSOR CONIQUE SUPÉRIOR D. 50	18	SP-04-0129	PURGE D'AIR
16	* SP-04-0181	DIFUSOR CONIQUE SUPÉRIOR D. 63			



CODE **FS10-500, FS10-600, FS10-750, FS10-900**

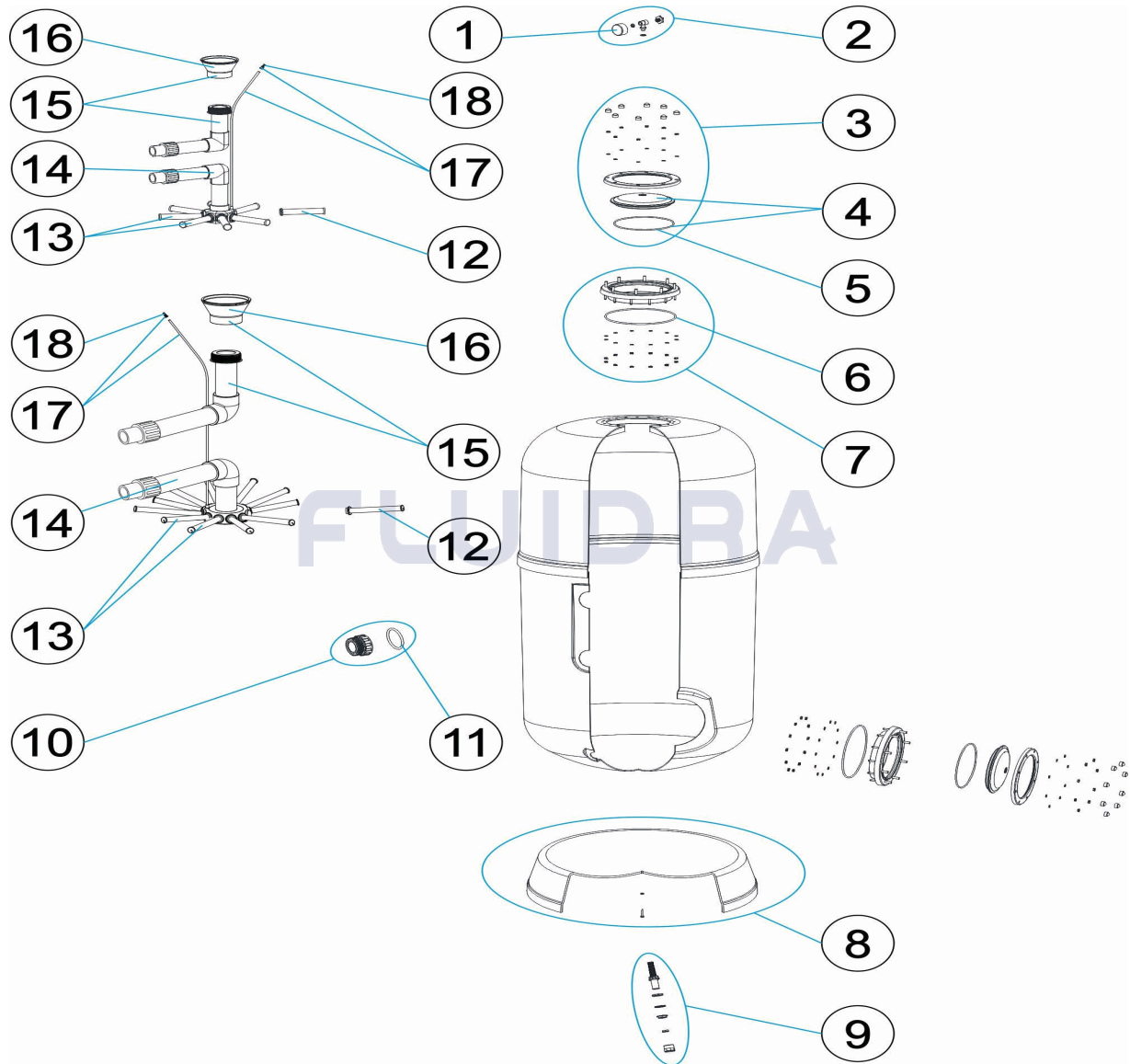
DESCRIPTION: **FILTRE LISBOA HIGH PERFORMANCE**

OBSERVATIONS

POS	CODE	OBSERVATIONS
8	* SP-04-0137	POUR: FS10-500
8	* SP-04-0428	POUR: FS10-600
8	* SP-04-0429	POUR: FS10-750
8	* SP-04-0430	POUR: FS10-900
10	* SP-04-0142	POUR: FS10-500, FS10-600
10	* SP-04-0143	POUR: FS10-750, FS10-900
12	* SP-04-0148	POUR: FS10-500 [4UT]
12	* SP-04-0149	POUR: FS10-600 [4UT]
12	* SP-04-0147	POUR: FS10-750 [6UT]
12	* SP-04-0150	POUR: FS10-900 [6UT]
13	* SP-04-0151	POUR: FS10-500
13	* SP-04-0152	POUR: FS10-600
13	* SP-04-0201	POUR: FS10-750
13	* SP-04-0154	POUR: FS10-900
14	* SP-04-0435	POUR: FS10-500
14	* SP-04-0432	POUR: FS10-600
14	* SP-04-0433	POUR: FS10-750
14	* SP-04-0434	POUR: FS10-900
15	* SP-04-0431	POUR: FS10-500
15	* SP-04-0436	POUR: FS10-600
15	* SP-04-0437	POUR: FS10-750
15	* SP-04-0438	POUR: FS10-900
16	* SP-04-0180	POUR: FS10-500, FS10-600
16	* SP-04-0181	POUR: FS10-750, FS10-900

CODE FS10-500, FS10-600, FS10-750, FS10-900

DESCRIPTION: LISBOA FILTER HIGH PERFORMANCE



ENGLISH

POS	CODE	DESCRIPTION	QUANTITY	POS	CODE	DESCRIPTION	QUANTITY
1	SP-04-0072	PRESSURE GAUGE 1/8" 3 KG./C "		12	* SP-04-0148	MANIFOLD ARM 1" 110 M "	
2	SP-04-0071	COMPLETE PRESSURE GAUGE UNIT		12	* SP-04-0149	MANIFOLD ARM 1" 175 M "	
3	SP-04-0310	SET LID		12	* SP-04-0147	MANIFOLD ARM 1" 225 M "	
4	SP-04-0306	FILTER LID D. 220 BLACK		12	* SP-04-0150	COLLECTOR ARM 1" 265 M "	
5	SP-04-0189	VALVE TOP RING FIXING GASKET		13	* SP-04-0151	MANIFOLD ARM ASSEMBLY D. 400	
6	SP-04-0134	O' RING 255X4		13	* SP-04-0152	MANIFOLD ARM ASSEMBLY	
7	SP-04-0133	20-SCREW NECK RING		13	* SP-04-0201	MANIFOLD ARM ASSEMBLY D. 650	
8	* SP-04-0137	FILTER BASE		13	* SP-04-0154	MANIFOLD ARM ASSEMBLY D. 750	
8	* SP-04-0428	FILTER BASE D. 650		14	* SP-04-0435	MANIFOLD ASSEMBLY D. 500	
8	* SP-04-0429	FILTER BASE D. 800		14	* SP-04-0432	MANIFOLD ASSEMBLY D. 600	
8	* SP-04-0430	FILTER BASE D. 950		14	* SP-04-0433	MANIFOLD ASSEMBLY D. 750	
9	SP-04-0237	DRAINAGE STRAINER NOZZLE 3/8'		14	* SP-04-0434	MANIFOLD ASSEMBLY D. 900	
10	* SP-04-0142	FITTING 1 1/2" + O'RIN "		15	* SP-04-0431	DIFFUSER ASSEMBLY D. 500	

* SEE OBSERVATIONS SHEET



PARTS BREAKDOWN

REV.: 0

9162

DATE: 07/06/2022

SHEET: 2/3

CODE **FS10-500, FS10-600, FS10-750, FS10-900**DESCRIPTION: **LISBOA FILTER HIGH PERFORMANCE**

10	* SP-04-0143	2" OUTLET FITTING + O'RIN "	15	* SP-04-0436	DIFFUSER ASSEMBLY D. 600
11	SP-04-0253	O' RING D. 60X8	15	* SP-04-0437	DIFFUSER ASSEMBLY D. 750
15	* SP-04-0438	DIFFUSER ASSEMBLY D.900	17	SP-04-0184	AIR PURGE + PIPE L=670
16	* SP-04-0180	DIFFUSER CONE D. 50	18	SP-04-0129	AIR PURGE
16	* SP-04-0181	DIFFUSER CONE D. 63			



PARTS BREAKDOWN

REV.: 0
DATE: 07/06/2022
SHEET: 3/3

9162

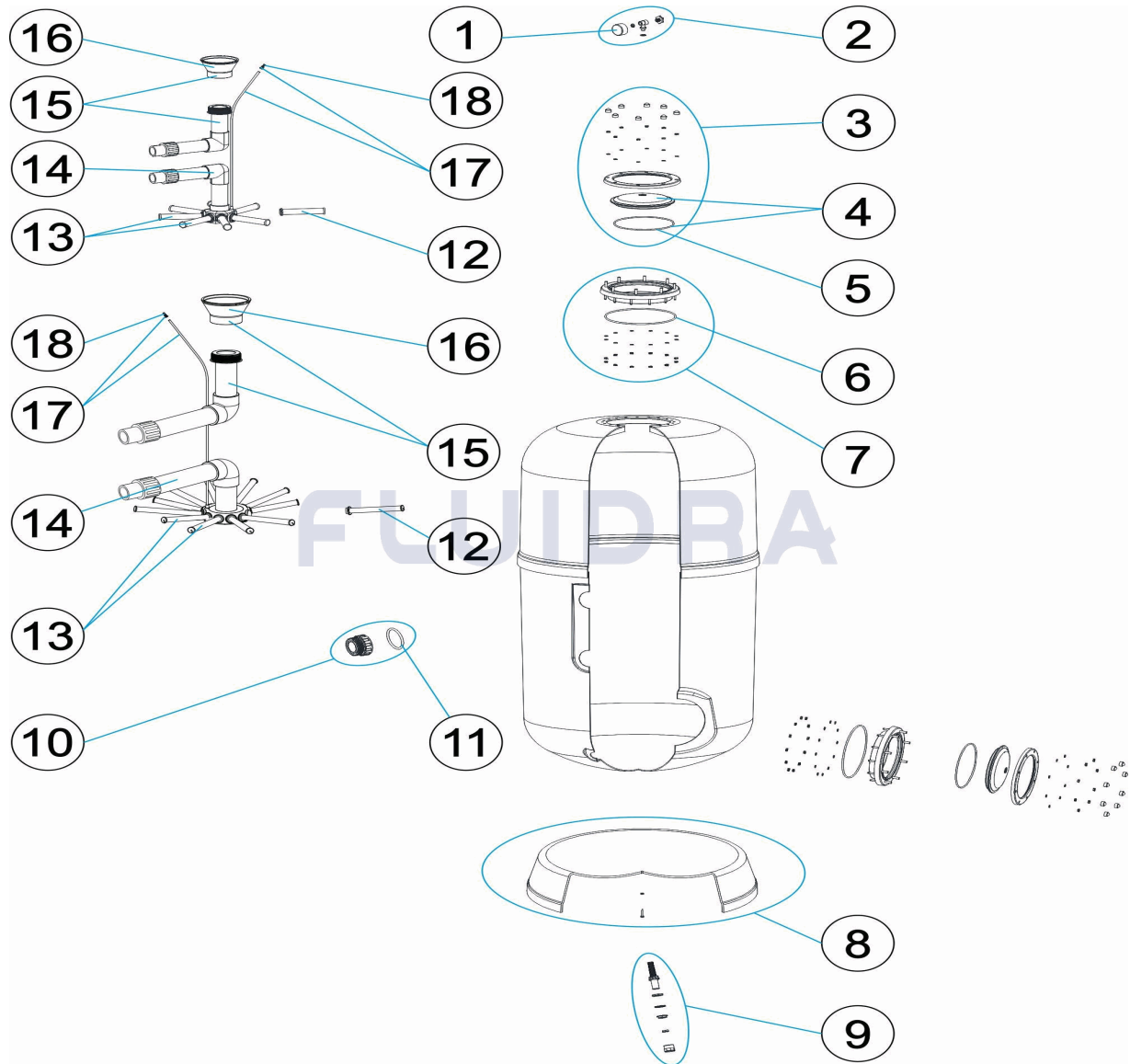
CODE **FS10-500, FS10-600, FS10-750, FS10-900**

DESCRIPTION: **LISBOA FILTER HIGH PERFORMANCE**

OBSERVATIONS

POS	CODE	OBSERVATIONS
8	* SP-04-0137	FOR: FS10-500
8	* SP-04-0428	FOR: FS10-600
8	* SP-04-0429	FOR: FS10-750
8	* SP-04-0430	FOR: FS10-900
10	* SP-04-0142	FOR: FS10-500, FS10-600
10	* SP-04-0143	FOR: FS10-750, FS10-900
12	* SP-04-0148	FOR: FS10-500 [4UT]
12	* SP-04-0149	FOR: FS10-600 [4UT]
12	* SP-04-0147	FOR: FS10-750 [6UT]
12	* SP-04-0150	FOR: FS10-900 [6UT]
13	* SP-04-0151	FOR: FS10-500
13	* SP-04-0152	FOR: FS10-600
13	* SP-04-0201	FOR: FS10-750
13	* SP-04-0154	FOR: FS10-900
14	* SP-04-0435	FOR: FS10-500
14	* SP-04-0432	FOR: FS10-600
14	* SP-04-0433	FOR: FS10-750
14	* SP-04-0434	FOR: FS10-900
15	* SP-04-0431	FOR: FS10-500
15	* SP-04-0436	FOR: FS10-600
15	* SP-04-0437	FOR: FS10-750
15	* SP-04-0438	FOR: FS10-900
16	* SP-04-0180	FOR: FS10-500, FS10-600
16	* SP-04-0181	FOR: FS10-750, FS10-900

CODICE **FS10-500, FS10-600, FS10-750, FS10-900**

 DESCRIZIONE: **FILTRI LISBOA HIGH PERFORMANCE**

ITALIANO

POS	CODICE	DESCRIZIONE	QUANTITA'	POS	CODICE	DESCRIZIONE	QUANTITA'
1	SP-04-0072	MANOMETRO 1/8" 3 KG./C "		12	* SP-04-0148	CANDELOTTO COLLECTORE 1" 110 M "	
2	SP-04-0071	MANOMETRO COMPLETO		12	* SP-04-0149	CANDELOTTO COLLECTORE 1" 175 M "	
3	SP-04-0310	GRUPPO COPERCHIO		12	* SP-04-0147	CANDELOTTO COLLECTORE 1" 225 M "	
4	SP-04-0306	COPERCHIO FILTRO D. 220 NERO		12	* SP-04-0150	CANDELOTTO 1" 265 M/M "	
5	SP-04-0189	GUARNIZIONE FLANGIA FISSAGIO VALVOL		13	* SP-04-0151	GRUPPO CANDELOTTO COLLECTORE D. 4	
6	SP-04-0134	O-RING 255X4		13	* SP-04-0152	GRUPPO CANDELOTTO COLLECTORE	
7	SP-04-0133	ANELLO COLLO 20 VITI		13	* SP-04-0201	GRUPPO CANDELOTTO COLLECTORE D. 6	
8	* SP-04-0137	BASE FILTRO		13	* SP-04-0154	GRUPPO CANDELOTTO COLLECTORE D. 7	
8	* SP-04-0428	BASE FILTRO D. 650		14	* SP-04-0435	KIT COLLETTORE D. 500	
8	* SP-04-0429	BASE FILTRO D. 800		14	* SP-04-0432	KIT COLLETTORE D. 600	
8	* SP-04-0430	BASE FILTRO D. 950		14	* SP-04-0433	KIT COLLETTORE D. 750	
9	SP-04-0237	DIFFUSORE SCARICO 3/8"		14	* SP-04-0434	KIT COLLETTORE D. 900	
10	* SP-04-0142	RACCORDO 1 1/2" + O-RIN "		15	* SP-04-0431	RACCORDO DIFFUSORE D. 500	



ESPLOSO

REV.: 0

9162

DATA: 07/06/2022

PAG.: 2/3

CODICE **FS10-500, FS10-600, FS10-750, FS10-900**DESCRIZIONE: **FILTRI LISBOA HIGH PERFORMANCE**

10	* SP-04-0143	RACCORDO USCITA 2" + O-RING	15	* SP-04-0436	RACCORDO DIFFUSORE D. 600
11	SP-04-0253	O-RING D 60X8	15	* SP-04-0437	RACCORDO DIFFUSORE D. 750
15	* SP-04-0438	RACCORDO DIFFUSORE D.900	17	SP-04-0184	SPURGO ARIA + TUBO L=670
16	* SP-04-0180	CONO DIFFUSORE D. 50	18	SP-04-0129	SFIATO ARIA
16	* SP-04-0181	CONO DIFFUSORE D. 63			

CODICE FS10-500, FS10-600, FS10-750, FS10-900

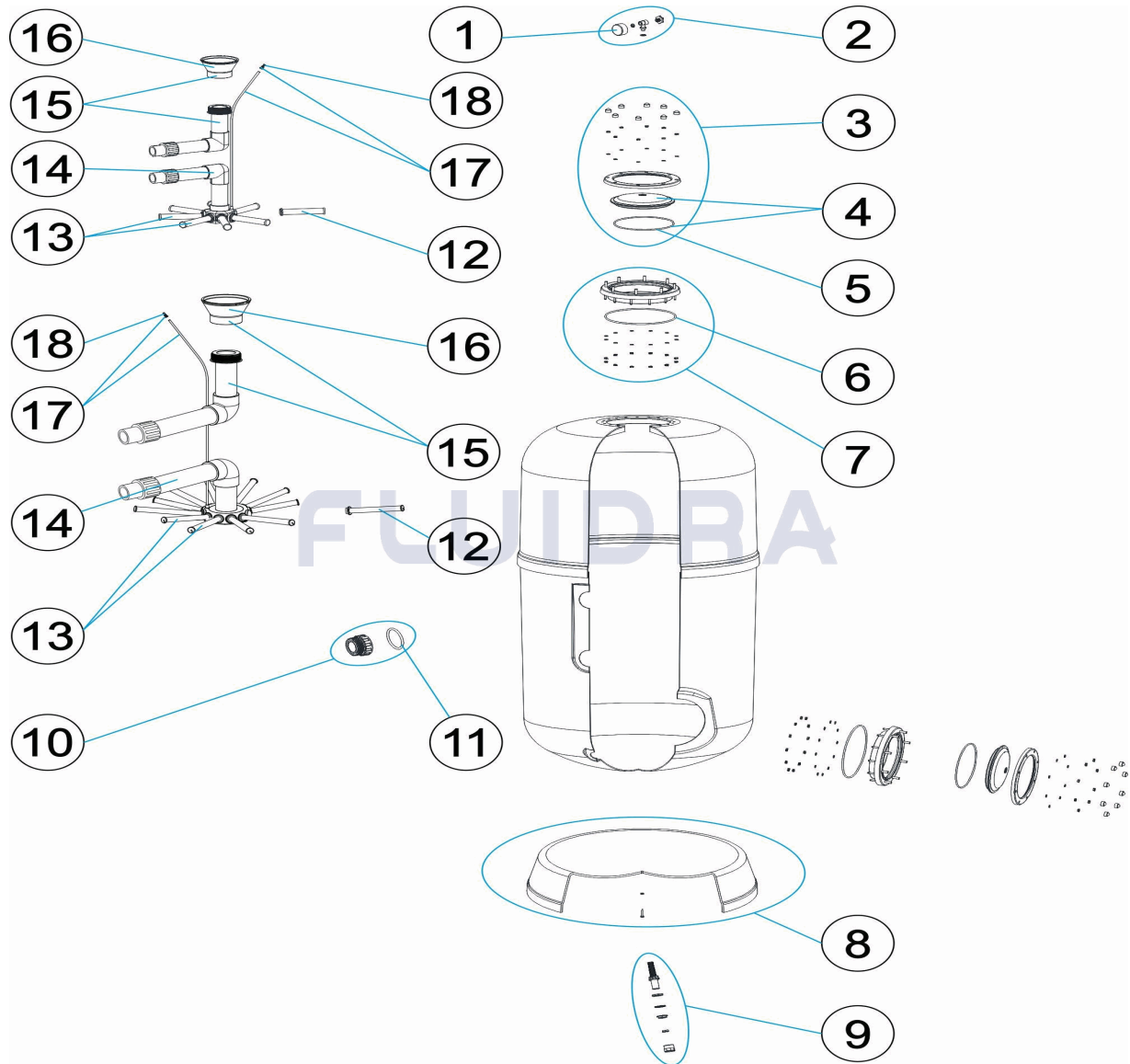
DESCRIZIONE: FILTRI LISBOA HIGH PERFORMANCE

OSSERVAZIONI

POS	CODICE	OSSERVAZIONI
8	* SP-04-0137	PER: FS10-500
8	* SP-04-0428	PER: FS10-600
8	* SP-04-0429	PER: FS10-750
8	* SP-04-0430	PER: FS10-900
10	* SP-04-0142	PER: FS10-500, FS10-600
10	* SP-04-0143	PER: FS10-750, FS10-900
12	* SP-04-0148	PER: FS10-500 [4UT]
12	* SP-04-0149	PER: FS10-600 [4UT]
12	* SP-04-0147	PER: FS10-750 [6UT]
12	* SP-04-0150	PER: FS10-900 [6UT]
13	* SP-04-0151	PER: FS10-500
13	* SP-04-0152	PER: FS10-600
13	* SP-04-0201	PER: FS10-750
13	* SP-04-0154	PER: FS10-900
14	* SP-04-0435	PER: FS10-500
14	* SP-04-0432	PER: FS10-600
14	* SP-04-0433	PER: FS10-750
14	* SP-04-0434	PER: FS10-900
15	* SP-04-0431	PER: FS10-500
15	* SP-04-0436	PER: FS10-600
15	* SP-04-0437	PER: FS10-750
15	* SP-04-0438	PER: FS10-900
16	* SP-04-0180	PER: FS10-500, FS10-600
16	* SP-04-0181	PER: FS10-750, FS10-900

CODE FS10-500, FS10-600, FS10-750, FS10-900

BESCHREIBUNG: FILTER LISBOA HIGH PERFORMANCE



DEUTSCH

POS	CODE	BESCHREIBUNG	MENGE	POS	CODE	BESCHREIBUNG	MENGE
1	SP-04-0072	MANOMETER 1/8" 3 KG/C "		12	* SP-04-0148	FILTERSTERN-SCHLITZROHR 1" 110 M "	
2	SP-04-0071	MANOMETER KOMPLETT		12	* SP-04-0149	FILTERSTERN-SCHLITZROHR 1" 175 M "	
3	SP-04-0310	GRUPPE FILTERDECKEL SCHWARZ MIT SK		12	* SP-04-0147	FILTERSTERN-SCHLITZROHR 1" 225 M "	
4	SP-04-0306	FILTERDECKEL D. 220 SCHWARZ		12	* SP-04-0150	FILTERSTERN-SCHLITZROHR 1" 265 M "	
5	SP-04-0189	DICHTUNG FIXIERRING VENTIL		13	* SP-04-0151	SET FILTERSTERN-SCHLITZROHR D. 400	
6	SP-04-0134	O-RING 255 X 4		13	* SP-04-0152	SET FILTERSTERN-SCHLITZROHR	
7	SP-04-0133	FILTERRING 20 SCHRAUBEN		13	* SP-04-0201	SET FILTERSTERN-SCHLITZROHR D. 650	
8	* SP-04-0137	FILTERFUSS		13	* SP-04-0154	SET FILTERSTERN-SCHLITZROHR D. 750	
8	* SP-04-0428	FILTERFUSS D. 650		14	* SP-04-0435	SAMMELROHRSET D. 500	
8	* SP-04-0429	FILTERFUSS D. 800		14	* SP-04-0432	SAMMELROHRSET D. 600	
8	* SP-04-0430	FILTERFUSS D. 950		14	* SP-04-0433	SAMMELROHRSET D. 750	
9	SP-04-0237	FILTERSTOPFEN ABLASS 3/8"		14	* SP-04-0434	SAMMELROHRSET D. 900	
10	* SP-04-0142	GEWINDESTÜCK 1 1/2" UND O-RIN "		15	* SP-04-0431	SET WASSERVERTEILER D. 500	

* SIEHE ANMERKUGSBLATT



EINZELTEILE

ÜBER.: 0

9162

DATUM: 07/06/2022

BLATT: 2/3

CODE **FS10-500, FS10-600, FS10-750, FS10-900**BESCHREIBUNG: **FILTER LISBOA HIGH PERFORMANCE**

10	* SP-04-0143	GEWINDESTÜCK AUSGANG 2" UND O-RIN	15	* SP-04-0436	SET WASSERVERTEILER D. 600
11	SP-04-0253	O-RING D. 60 X 8	15	* SP-04-0437	SET WASSERVERTEILER D. 750
15	* SP-04-0438	SET WASSERVERTEILER D.900	17	SP-04-0184	ENTLÜFTUNG UND ROHR L=670
16	* SP-04-0180	KEGEL WASSERVERTEILER D. 50	18	SP-04-0129	ENTLÜFTUNG
16	* SP-04-0181	KEGEL WASSERVERTEILER D. 63			

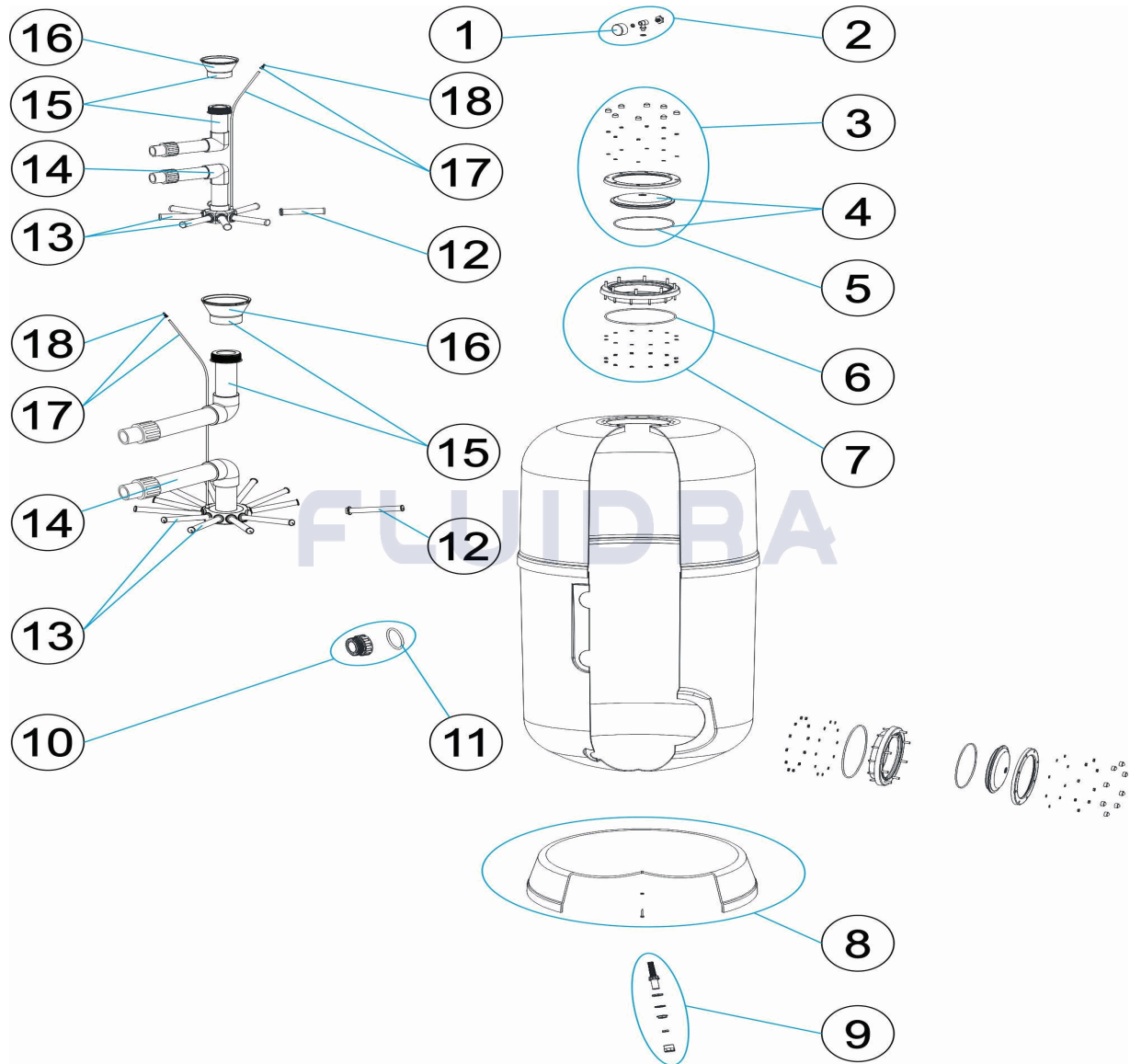
CODE **FS10-500, FS10-600, FS10-750, FS10-900**

BESCHREIBUNG: **FILTER LISBOA HIGH PERFORMANCE**

HINWEISE

POS	CODE	HINWEISE
8	* SP-04-0137	FÜR: FS10-500
8	* SP-04-0428	FÜR: FS10-600
8	* SP-04-0429	FÜR: FS10-750
8	* SP-04-0430	FÜR: FS10-900
10	* SP-04-0142	FÜR: FS10-500, FS10-600
10	* SP-04-0143	FÜR: FS10-750, FS10-900
12	* SP-04-0148	FÜR: FS10-500 [4UT]
12	* SP-04-0149	FÜR: FS10-600 [4UT]
12	* SP-04-0147	FÜR: FS10-750 [6UT]
12	* SP-04-0150	FÜR: FS10-900 [6UT]
13	* SP-04-0151	FÜR: FS10-500
13	* SP-04-0152	FÜR: FS10-600
13	* SP-04-0201	FÜR: FS10-750
13	* SP-04-0154	FÜR: FS10-900
14	* SP-04-0435	FÜR: FS10-500
14	* SP-04-0432	FÜR: FS10-600
14	* SP-04-0433	FÜR: FS10-750
14	* SP-04-0434	FÜR: FS10-900
15	* SP-04-0431	FÜR: FS10-500
15	* SP-04-0436	FÜR: FS10-600
15	* SP-04-0437	FÜR: FS10-750
15	* SP-04-0438	FÜR: FS10-900
16	* SP-04-0180	FÜR: FS10-500, FS10-600
16	* SP-04-0181	FÜR: FS10-750, FS10-900

CODIGO **FS10-500, FS10-600, FS10-750, FS10-900**

 DESCRIÇÃO: **FILTRO LISBOA HIGH PERFORMANCE**


PORTUGUES

POS	CODIGO	DESCRIÇÃO	JANTIDADE	POS	CODIGO	DESCRIÇÃO	JANTIDADE
1	SP-04-0072	MANOMETRO 1/8" 3 KG./C "		12	* SP-04-0148	BRAÇO COLECTOR 1" 110 M "	
2	SP-04-0071	MANÓMETRO COMPLETO		12	* SP-04-0149	BRAÇO COLECTOR 1" 175 M "	
3	SP-04-0310	CONJUNTO TAMPA		12	* SP-04-0147	BRAÇO COLECTOR 1" 225 M "	
4	SP-04-0306	TAMPA FILTRO D.220 NEGRA		12	* SP-04-0150	BRAÇO COLECTOR 1" 265 M/M "	
5	SP-04-0189	JUNTA ARO FIXAÇÃO VALVULA TOP		13	* SP-04-0151	CJTO. BRAÇO COLECTOR D. 400	
6	SP-04-0134	JUNTA TÓRICA 255X4		13	* SP-04-0152	CJTO. BRAÇO COLECTOR	
7	SP-04-0133	ARO PESCOCOÇO 20 PARAFUSOS		13	* SP-04-0201	CJTO. BRAÇO COLECTOR D.650	
8	* SP-04-0137	PÉ FILTRO		13	* SP-04-0154	CJTO. BRAÇO COLECTOR D. 750	
8	* SP-04-0428	PÉ FILTRO D. 650		14	* SP-04-0435	CJTO. COLECTOR D. 500	
8	* SP-04-0429	PÉ FILTRO D. 800		14	* SP-04-0432	CJTO. COLECTOR D. 600	
8	* SP-04-0430	PÉ FILTRO D. 950		14	* SP-04-0433	CJTO. COLECTOR D. 750	
9	SP-04-0237	DRENO 3/8"		14	* SP-04-0434	CJTO. COLECTOR D. 900	
10	* SP-04-0142	RACORD 1 1/2" JUNTA TORIC "		15	* SP-04-0431	CJTO. DIFUSOR D. 500	

* VEJA A FICHA DE OBSERVAÇÕES



ITEM

REV.: 0

9162

DATA: 07/06/2022

FOLHA: 2/3

CODIGO **FS10-500, FS10-600, FS10-750, FS10-900**DESCRICAÇÃO: **FILTRO LISBOA HIGH PERFORMANCE**

10	* SP-04-0143	ACOPLADOR SAÍDA 2" + JUNTA TORIC "	15	* SP-04-0436	CJTO. DIFUSOR D. 600
11	SP-04-0253	JUNTA TÓRICA D 60X8	15	* SP-04-0437	CJTO. DIFUSOR D. 750
15	* SP-04-0438	CJTO. DIFUSOR D.900	17	SP-04-0184	PURGA AR + TUBO L=670
16	* SP-04-0180	CONO DIFUSOR D. 50	18	SP-04-0129	PURGA AREIA
16	* SP-04-0181	CONO DIFUSOR D. 63			

CODIGO FS10-500, FS10-600, FS10-750, FS10-900

DESCRIÇÃO: FILTRO LISBOA HIGH PERFORMANCE

OBSERVAÇÕES

POS	CODIGO	OBSERVAÇÕES
8	* SP-04-0137	PARA: FS10-500
8	* SP-04-0428	PARA: FS10-600
8	* SP-04-0429	PARA: FS10-750
8	* SP-04-0430	PARA: FS10-900
10	* SP-04-0142	PARA: FS10-500, FS10-600
10	* SP-04-0143	PARA: FS10-750, FS10-900
12	* SP-04-0148	PARA: FS10-500 [4UT]
12	* SP-04-0149	PARA: FS10-600 [4UT]
12	* SP-04-0147	PARA: FS10-750 [6UT]
12	* SP-04-0150	PARA: FS10-900 [6UT]
13	* SP-04-0151	PARA: FS10-500
13	* SP-04-0152	PARA: FS10-600
13	* SP-04-0201	PARA: FS10-750
13	* SP-04-0154	PARA: FS10-900
14	* SP-04-0435	PARA: FS10-500
14	* SP-04-0432	PARA: FS10-600
14	* SP-04-0433	PARA: FS10-750
14	* SP-04-0434	PARA: FS10-900
15	* SP-04-0431	PARA: FS10-500
15	* SP-04-0436	PARA: FS10-600
15	* SP-04-0437	PARA: FS10-750
15	* SP-04-0438	PARA: FS10-900
16	* SP-04-0180	PARA: FS10-500, FS10-600
16	* SP-04-0181	PARA: FS10-750, FS10-900