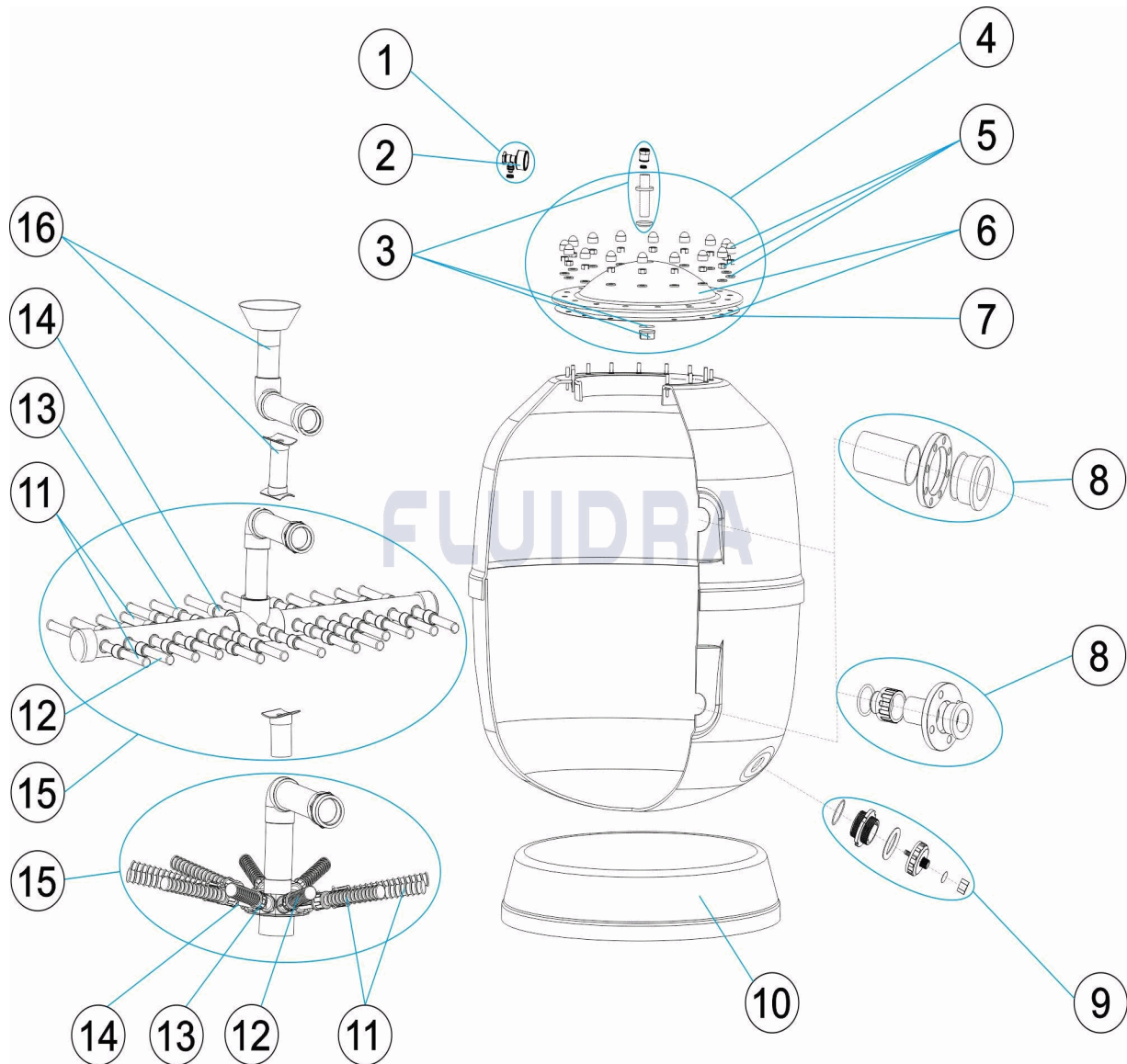


**CODIGO** TID-1050063, TID-1050075, TID-1050090, TID-1200075, TID-1200090, TID-1400075, TID-1400090, TID-1400110, TID-1600090, TID-1600110, TID-1600125, TID-1800090, TID-1800110, TID-1800125, TID-1800140, TID-2000110, TID-2000125, TID-2000140, TID-2000160

**DESCRIPCION:** FILTRO TEIDE INDUSTRIAL



**ESPAÑOL**

| POS | CODIGO       | DESCRIPCION                | CANTIDAD | POS | CODIGO       | DESCRIPCION                         | CANTIDAD |
|-----|--------------|----------------------------|----------|-----|--------------|-------------------------------------|----------|
| 1   | SP-04-0071   | MANOMETRO COMPLETO         |          | 10  | * SP-04-0456 | PIE FILTRO D.1050                   |          |
| 2   | SP-04-0072   | MANOMETRO 1/8" 3 KG/C "    |          | 10  | * SP-04-0457 | PIE FILTRO D.1200                   |          |
| 3   | SP-04-0300   | FIJACION MANOMETRO         |          | 10  | * SP-04-0458 | PIE FILTRO D.1400                   |          |
| 4   | SP-04-0302   | TAPA FILTRO COMPLETA       |          | 10  | * SP-04-0459 | PIE FILTRO D.1600                   |          |
| 5   | SP-04-0303   | TORNILLERIA TAPA FILTRO    |          | 10  | * SP-04-0460 | PIE FILTRO D.1800                   |          |
| 6   | SP-04-0304   | TAPA FILTRO + JUNTA        |          | 10  | * SP-04-0461 | PIE FILTRO D.2000                   |          |
| 7   | SP-04-0305   | JUNTA TORICA TAPA          |          | 11  | * SP-04-0155 | CJTO. BRAZOS COLECTOR D. 950 - 1050 |          |
| 8   | * SP-04-0450 | GRUPO SALIDA D. 63 VOLCANO |          | 11  | * SP-04-0316 | CJTO. BRAZOS COLECTOR D.1200        |          |
| 8   | * SP-04-0451 | GRUPO SALIDA D. 75         |          | 11  | * SP-04-0462 | CJTO. BRAZOS COLECTOR D.1400        |          |
| 8   | * SP-04-0315 | CJTO. SALIDA D. 90 - 3"    |          | 11  | * SP-04-0463 | CJTO. BRAZOS COLECTOR D.1600        |          |

**\* NOTA OBSERVACIONES**



# KIT

REV: 0  
FECHA: 09/06/2022  
HOJA: 2/4

9165

**CODIGO** TID-1050063, TID-1050075, TID-1050090, TID-1200075, TID-1200090,  
TID-1400075, TID-1400090, TID-1400110, TID-1600090, TID-1600110,  
TID-1600125, TID-1800090, TID-1800110, TID-1800125, TID-1800140,  
TID-2000110, TID-2000125, TID-2000140, TID-2000160

**DESCRIPCION: FILTRO TEIDE INDUSTRIAL**

|    |              |  |    |              |                                       |
|----|--------------|--|----|--------------|---------------------------------------|
| 8  | * SP-04-0452 | GRUPO SALIDA D. 110 VOLCANO            | 11 | * SP-04-0464 | CJTO. BRAZOS COLECTOR D.1800          |
| 8  | * SP-04-0453 | GRUPO SALIDA D. 125 VOLCANO            | 11 | * SP-04-0465 | CJTO. BRAZOS COLECTOR D.2000          |
| 8  | * SP-04-0454 | GRUPO SALIDA D. 140 VOLCANO            | 12 | * SP-04-0147 | BRAZO COLECTOR 1" 225 M "             |
| 8  | * SP-04-0455 | GRUPO SALIDA D. 160 VOLCANO            | 12 | * SP-04-0150 | BRAZO COLECTOR 1" 265 M "             |
| 9  | SP-04-0439   | DESCARGA ARENA-AGUA                    | 13 | * SP-04-0146 | MANGUITO ENLACE UNION 1"              |
| 14 | * SP-04-0145 | BRAZO COLECTOR 1" 100 M "              | 16 | * SP-04-0485 | CJTO. DIFUSOR D. 63 - 1050            |
| 15 | * SP-04-0466 | CJTO. COLECTOR D. 63 - 1050            | 16 | * SP-04-0486 | CJTO. DIFUSOR D. 75 - 1050            |
| 15 | * SP-04-0467 | CJTO. COLECTOR D. 75 - 1050            | 16 | * SP-04-0487 | CJTO. DIFUSOR D. 90 - 1050            |
| 15 | * SP-04-0468 | CJTO. COLECTOR D. 90 - 1050            | 16 | * SP-04-0488 | CJTO. DIFUSOR D. 75 - 1200            |
| 15 | * SP-04-0469 | CJTO. COLECTOR D. 75 - 1200            | 16 | * SP-04-0489 | CJTO. DIFUSOR D. 90 - 1200            |
| 15 | * SP-04-0470 | CJTO. COLECTOR D. 90 - 1200            | 16 | * SP-04-0490 | CJTO. DIFUSOR D. 75 - 1400            |
| 15 | * SP-04-0471 | CJTO. COLECTOR D. 75 - 1400            | 16 | * SP-04-0491 | CJTO. DIFUSOR D. 90 - 1400            |
| 15 | * SP-04-0472 | CJTO. COLECTOR D. 90 - 1400            | 16 | * SP-04-0492 | CJTO. DIFUSOR D. 110 - 1400           |
| 15 | * SP-04-0473 | CJTO. COLECTOR D. 110 - 1400           | 16 | * SP-04-0493 | CJTO. DIFUSOR D. 90 - 1600            |
| 15 | * SP-04-0474 | CJTO. COLECTOR D. 90 - 1600            | 16 | * SP-04-0494 | CJTO. DIFUSOR D. 110 - 1600           |
| 15 | * SP-04-0475 | CJTO. COLECTOR D. 110 - 1600           | 16 | * SP-04-0495 | CJTO. DIFUSOR D. 125 - 1600           |
| 15 | * SP-04-0476 | CJTO. COLECTOR D. 125 - 1600           | 16 | * SP-04-0496 | CJTO. DIFUSOR + SOPORTE D. 90 - 1800  |
| 15 | * SP-04-0477 | CJTO. COLECTOR + SOPORTE D. 90 - 1800  | 16 | * SP-04-0497 | CJTO. DIFUSOR + SOPORTE D. 110 - 1800 |
| 15 | * SP-04-0478 | CJTO. COLECTOR + SOPORTE D. 110 - 1800 | 16 | * SP-04-0498 | CJTO. DIFUSOR + SOPORTE D. 125 - 1800 |
| 15 | * SP-04-0479 | CJTO. COLECTOR + SOPORTE D. 125 - 1800 | 16 | * SP-04-0499 | CJTO. DIFUSOR + SOPORTE D. 140 - 1800 |
| 15 | * SP-04-0480 | CJTO. COLECTOR + SOPORTE D. 140 - 1800 | 16 | * SP-04-0500 | CJTO. DIFUSOR + SOPORTE D. 110 - 2000 |
| 15 | * SP-04-0481 | CJTO. COLECTOR + SOPORTE D. 110 - 2000 | 16 | * SP-04-0501 | CJTO. DIFUSOR + SOPORTE D. 125 - 2000 |
| 15 | * SP-04-0482 | CJTO. COLECTOR + SOPORTE D. 125 - 2000 | 16 | * SP-04-0502 | CJTO. DIFUSOR + SOPORTE D. 140 - 2000 |
| 15 | * SP-04-0483 | CJTO. COLECTOR + SOPORTE D. 140 - 2000 | 16 | * SP-04-0503 | CJTO. DIFUSOR + SOPORTE D. 160 - 2000 |
| 15 | * SP-04-0484 | CJTO. COLECTOR + SOPORTE D. 160 - 2000 |    |              |                                       |

**CODIGO**                    **TID-1050063, TID-1050075, TID-1050090, TID-1200075, TID-1200090, TID-1400075, TID-1400090, TID-1400110, TID-1600090, TID-1600110, TID-1600125, TID-1800090, TID-1800110, TID-1800125, TID-1800140, TID-2000110, TID-2000125, TID-2000140, TID-2000160**

**DESCRIPCION: FILTRO TEIDE INDUSTRIAL**

## OBSERVACIONES

| POS | CODIGO       | OBSERVACIONES   |
|-----|--------------|---|
| 8   | * SP-04-0450 | PARA: TID-1050063   |
| 8   | * SP-04-0451 | PARA: TID-1050075, TID-1200075, TID-1400075   |
| 8   | * SP-04-0315 | PARA: TID-1050090, TID-1200090, TID-1400090, TID-1600090, TID-1800090   |
| 8   | * SP-04-0452 | PARA: TID-1400110, TID-1600110, TID-1800110, TID-2000110  |
| 8   | * SP-04-0453 | PARA: TID-1600125, TID-1800125, TID-2000125   |
| 8   | * SP-04-0454 | PARA: TID-1800140, TID-2000140  |
| 8   | * SP-04-0455 | PARA: TID-2000160   |
| 10  | * SP-04-0456 | PARA: TID-1050063, TID-1050075, TID-1050090   |
| 10  | * SP-04-0457 | PARA: TID-1200075, TID-1200090  |
| 10  | * SP-04-0458 | PARA: TID-1400075, TID-1400090, TID-1400110   |
| 10  | * SP-04-0459 | PARA: TID-1600090, TID-1600110, TID-1600125   |
| 10  | * SP-04-0460 | PARA: TID-1800090, TID-1800110, TID-1800125, TID-1800140  |
| 10  | * SP-04-0461 | PARA: TID-2000110, TID-2000125, TID-2000140, TID-2000160  |
| 11  | * SP-04-0155 | PARA: TID-1050063, TID-1050075, TID-1050090   |
| 11  | * SP-04-0316 | PARA: TID-1200075, TID-1200090  |
| 11  | * SP-04-0462 | PARA: TID-1400075, TID-1400090, TID-1400110   |
| 11  | * SP-04-0463 | PARA: TID-1600090, TID-1600110, TID-1600125   |
| 11  | * SP-04-0464 | PARA: TID-1800090, TID-1800110, TID-1800125, TID-1800140  |
| 11  | * SP-04-0465 | PARA: TID-2000110, TID-2000125, TID-2000140, TID-2000160  |
| 12  | * SP-04-0147 | PARA: TID-1050063 [6UNIDADES], TID-1050075 [6UNIDADES], TID-1050090 [6UNIDADES], TID-1400075 [6UNIDADES], TID-1400090 [6UNIDADES], TID-1400110 [6UNIDADES], TID-1800090 [6UNIDADES], TID-1800110 [6UNIDADES], TID-1800125 [6UNIDADES], TID-1800140 [6UNIDADES], TID-2000110 [9UNIDADES], TID-2000125 [9UNIDADES], TID-2000140 [9UNIDADES], TID-2000160 [9UNIDADES]  |
| 12  | * SP-04-0150 | PARA: TID-1200075 [6UNIDADES], TID-1200090 [6UNIDADES], TID-1600090 [6UNIDADES], TID-1600110 [6UNIDADES], TID-1600125 [6UNIDADES], TID-1800090 [7UNIDADES], TID-1800110 [7UNIDADES], TID-1800125 [7UNIDADES], TID-1800140 [7UNIDADES], TID-2000110 [4UNIDADES], TID-2000125 [4UNIDADES], TID-2000140 [4UNIDADES], TID-2000160 [4UNIDADES]   |
| 13  | * SP-04-0146 | PARA: TID-1050063 [3UNIDADES], TID-1050075 [3UNIDADES], TID-1050090 [3UNIDADES], TID-1200075 [3UNIDADES], TID-1200090 [3UNIDADES], TID-1400075 [6UNIDADES], TID-1400090 [6UNIDADES], TID-1400110 [6UNIDADES], TID-1600090 [6UNIDADES], TID-1600110 [6UNIDADES], TID-1600125 [6UNIDADES], TID-1800090 [11UNIDADES], TID-1800110 [11UNIDADES], TID-1800125 [11UNIDADES], TID-1800140 [11UNIDADES], TID-2000110 [20UNIDADES], TID-2000125 [20UNIDADES], TID-2000140 [20UNIDADES], TID-2000160 [20UNIDADES] |
| 14  | * SP-04-0145 | PARA: TID-1050063 [3UNIDADES], TID-1050075 [3UNIDADES], TID-1050090 [3UNIDADES], TID-1200075 [3UNIDADES], TID-1200090 [3UNIDADES], TID-1400075 [6UNIDADES], TID-1400090 [6UNIDADES], TID-1400110 [6UNIDADES], TID-1600090 [6UNIDADES], TID-1600110 [6UNIDADES], TID-1600125 [6UNIDADES], TID-1800090 [11UNIDADES], TID-1800110 [11UNIDADES], TID-1800125 [11UNIDADES], TID-1800140 [11UNIDADES], TID-2000110 [20UNIDADES], TID-2000125 [20UNIDADES], TID-2000140 [20UNIDADES], TID-2000160 [20UNIDADES] |
| 15  | * SP-04-0466 | PARA: TID-1050063   |
| 15  | * SP-04-0467 | PARA: TID-1050075   |
| 15  | * SP-04-0468 | PARA: TID-1050090   |
| 15  | * SP-04-0469 | PARA: TID-1200075   |
| 15  | * SP-04-0470 | PARA: TID-1200090   |
| 15  | * SP-04-0471 | PARA: TID-1400075   |
| 15  | * SP-04-0472 | PARA: TID-1400090   |
| 15  | * SP-04-0473 | PARA: TID-1400110   |
| 15  | * SP-04-0474 | PARA: TID-1600090   |



# KIT

REV: 0

9165

FECHA: 09/06/2022

HOJA: 4/4

CODIGO

TID-1050063, TID-1050075, TID-1050090, TID-1200075, TID-1200090,  
TID-1400075, TID-1400090, TID-1400110, TID-1600090, TID-1600110,  
TID-1600125, TID-1800090, TID-1800110, TID-1800125, TID-1800140,  
TID-2000110, TID-2000125, TID-2000140, TID-2000160

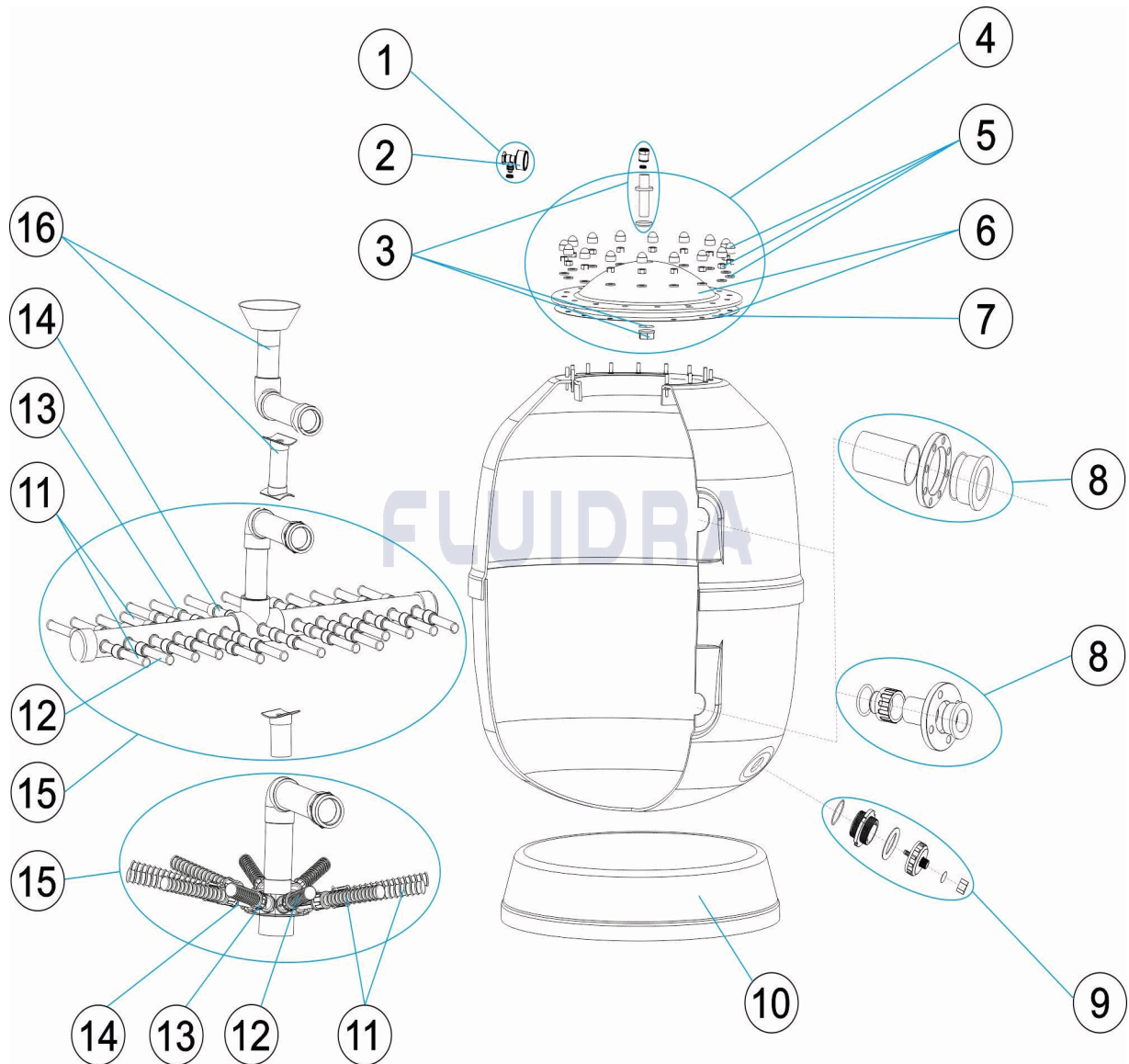
DESCRIPCION: FILTRO TEIDE INDUSTRIAL

|    |              |                   |
|----|--------------|-------------------|
| 15 | * SP-04-0475 | PARA: TID-1600110 |
| 15 | * SP-04-0476 | PARA: TID-1600125 |
| 15 | * SP-04-0477 | PARA: TID-1800090 |
| 15 | * SP-04-0478 | PARA: TID-1800110 |
| 15 | * SP-04-0479 | PARA: TID-1800125 |
| 15 | * SP-04-0480 | PARA: TID-1800140 |
| 15 | * SP-04-0481 | PARA: TID-2000110 |
| 15 | * SP-04-0482 | PARA: TID-2000125 |
| 15 | * SP-04-0483 | PARA: TID-2000140 |
| 15 | * SP-04-0484 | PARA: TID-2000160 |
| 16 | * SP-04-0485 | PARA: TID-1050063 |
| 16 | * SP-04-0486 | PARA: TID-1050075 |
| 16 | * SP-04-0487 | PARA: TID-1050090 |
| 16 | * SP-04-0488 | PARA: TID-1200075 |
| 16 | * SP-04-0489 | PARA: TID-1200090 |
| 16 | * SP-04-0490 | PARA: TID-1400075 |
| 16 | * SP-04-0491 | PARA: TID-1400090 |
| 16 | * SP-04-0492 | PARA: TID-1400110 |
| 16 | * SP-04-0493 | PARA: TID-1600090 |
| 16 | * SP-04-0494 | PARA: TID-1600110 |
| 16 | * SP-04-0495 | PARA: TID-1600125 |
| 16 | * SP-04-0496 | PARA: TID-1800090 |
| 16 | * SP-04-0497 | PARA: TID-1800110 |
| 16 | * SP-04-0498 | PARA: TID-1800125 |
| 16 | * SP-04-0499 | PARA: TID-1800140 |
| 16 | * SP-04-0500 | PARA: TID-2000110 |
| 16 | * SP-04-0501 | PARA: TID-2000125 |
| 16 | * SP-04-0502 | PARA: TID-2000140 |
| 16 | * SP-04-0503 | PARA: TID-2000160 |

CODE

TID-1050063, TID-1050075, TID-1050090, TID-1200075, TID-1200090,  
 TID-1400075, TID-1400090, TID-1400110, TID-1600090, TID-1600110,  
 TID-1600125, TID-1800090, TID-1800110, TID-1800125, TID-1800140,  
 TID-2000110, TID-2000125, TID-2000140, TID-2000160

DESCRIPTION: FILTRE TEIDE INDUSTRIEL


**FRANCAIS**

| POS | CODE         | DESCRIPTION                   | QUANTITE | POS | CODE         | DESCRIPTION                         | QUANTITE |
|-----|--------------|-------------------------------|----------|-----|--------------|-------------------------------------|----------|
| 1   | SP-04-0071   | MANOMETRE COMPLET             |          | 10  | * SP-04-0456 | SOCLE FILTRE D.1050                 |          |
| 2   | SP-04-0072   | MANOMETRE 1/8" 3 KG./C "      |          | 10  | * SP-04-0457 | SOCLE FILTRE D.1200                 |          |
| 3   | SP-04-0300   | FIXATION MANOMETRE            |          | 10  | * SP-04-0458 | SOCLE FILTRE D.1400                 |          |
| 4   | SP-04-0302   | COUVERCLE DE FILTRE COMPLETE  |          | 10  | * SP-04-0459 | SOCLE FILTRE D.1600                 |          |
| 5   | SP-04-0303   | VISSERIE COUVERCLE DE FILTRE  |          | 10  | * SP-04-0460 | SOCLE FILTRE D.1800                 |          |
| 6   | SP-04-0304   | COUVERCLE FILTRE + JOINT      |          | 10  | * SP-04-0461 | SOCLE FILTRE D.2000                 |          |
| 7   | SP-04-0305   | JOINT TORIQUE COUVERCLE       |          | 11  | * SP-04-0155 | ENSEMBLE BRAS DE REPARTITEUR D. 950 |          |
| 8   | * SP-04-0450 | ENSEMBLE SORTIE D. 63 VOLCANO |          | 11  | * SP-04-0316 | ENSEMBLE BRAS DE REPARTITEUR D. 120 |          |
| 8   | * SP-04-0451 | ENSEMBLE SORTIE D. 75         |          | 11  | * SP-04-0462 | ENSEMBLE BRAS DE REPARTITEUR D. 140 |          |
| 8   | * SP-04-0315 | ENSEMBLE SORTIE D. 90 - 3"    |          | 11  | * SP-04-0463 | ENSEMBLE BRAS DE REPARTITEUR D. 160 |          |

\* VOIR FICHE D'OBSERVATIONS

CODE

**TID-1050063, TID-1050075, TID-1050090, TID-1200075, TID-1200090,  
 TID-1400075, TID-1400090, TID-1400110, TID-1600090, TID-1600110,  
 TID-1600125, TID-1800090, TID-1800110, TID-1800125, TID-1800140,  
 TID-2000110, TID-2000125, TID-2000140, TID-2000160**

 DESCRIPTION: **FILTRE TEIDE INDUSTRIEL**

|    |              |                                   |    |              |                                     |
|----|--------------|-----------------------------------|----|--------------|-------------------------------------|
| 8  | * SP-04-0452 | ENSEMBLE SORTIE D. 110 VOLCANO    | 11 | * SP-04-0464 | ENSEMBLE BRAS DE REPARTITEUR D. 180 |
| 8  | * SP-04-0453 | ENSEMBLE SORTIE D. 125 VOLCANO    | 11 | * SP-04-0465 | ENSEMBLE BRAS DE REPARTITEUR D. 200 |
| 8  | * SP-04-0454 | ENSEMBLE SORTIE D. 140 VOLCANO    | 12 | * SP-04-0147 | BRAS DE REPARTITEUR 1" 225 M "      |
| 8  | * SP-04-0455 | ENSEMBLE SORTIE D. 160 VOLCANO    | 12 | * SP-04-0150 | BRAS DE REPARTITEUR 1" 265 M/M "    |
| 9  | SP-04-0439   | DÉCHARGE DE SABLE - EAU           | 13 | * SP-04-0146 | MANCHON UNION 1"                    |
| 14 | * SP-04-0145 | BRAS DE REPARTITEUR 1" 100M "     | 16 | * SP-04-0485 | ENSEMBLE DIFFUSEUR D. 63 - 1050     |
| 15 | * SP-04-0466 | ENSEMBLE COLLECTEUR D. 63 - 1050  | 16 | * SP-04-0486 | ENSEMBLE DIFFUSEUR D. 75 - 1050     |
| 15 | * SP-04-0467 | ENSEMBLE COLLECTEUR D. 75 - 1050  | 16 | * SP-04-0487 | ENSEMBLE DIFFUSEUR D. 90 - 1050     |
| 15 | * SP-04-0468 | ENSEMBLE COLLECTEUR D. 90 - 1050  | 16 | * SP-04-0488 | ENSEMBLE DIFFUSEUR D. 75 - 1200     |
| 15 | * SP-04-0469 | ENSEMBLE COLLECTEUR D. 75 - 1200  | 16 | * SP-04-0489 | ENSEMBLE DIFFUSEUR D. 90 - 1200     |
| 15 | * SP-04-0470 | ENSEMBLE COLLECTEUR D. 90 - 1200  | 16 | * SP-04-0490 | ENSEMBLE DIFFUSEUR D. 75 - 1400     |
| 15 | * SP-04-0471 | ENSEMBLE COLLECTEUR D. 75 - 1400  | 16 | * SP-04-0491 | ENSEMBLE DIFFUSEUR D. 90 - 1400     |
| 15 | * SP-04-0472 | ENSEMBLE COLLECTEUR D. 90 - 1400  | 16 | * SP-04-0492 | ENSEMBLE DIFFUSEUR D. 110 - 1400    |
| 15 | * SP-04-0473 | ENSEMBLE COLLECTEUR D. 110 - 1400 | 16 | * SP-04-0493 | ENSEMBLE DIFFUSEUR D. 90 - 1600     |
| 15 | * SP-04-0474 | ENSEMBLE COLLECTEUR D. 90 - 1600  | 16 | * SP-04-0494 | ENSEMBLE DIFFUSEUR D. 110 - 1600    |
| 15 | * SP-04-0475 | ENSEMBLE COLLECTEUR D. 110 - 1600 | 16 | * SP-04-0495 | ENSEMBLE DIFFUSEUR D. 125 - 1600    |
| 15 | * SP-04-0476 | ENSEMBLE COLLECTEUR D. 125 - 1600 | 16 | * SP-04-0496 | ENSEMBLE DIFFUSEUR + PROTECTION D.  |
| 15 | * SP-04-0477 | ENSEMBLE COLLECTEUR + PROTECTION  | 16 | * SP-04-0497 | ENSEMBLE DIFFUSEUR + PROTECTION D.  |
| 15 | * SP-04-0478 | ENSEMBLE COLLECTEUR + PROTECTION  | 16 | * SP-04-0498 | ENSEMBLE DIFFUSEUR + PROTECTION D.  |
| 15 | * SP-04-0479 | ENSEMBLE COLLECTEUR + PROTECTION  | 16 | * SP-04-0499 | ENSEMBLE DIFFUSEUR + PROTECTION D.  |
| 15 | * SP-04-0480 | ENSEMBLE COLLECTEUR + PROTECTION  | 16 | * SP-04-0500 | ENSEMBLE DIFFUSEUR + PROTECTION D.  |
| 15 | * SP-04-0481 | ENSEMBLE COLLECTEUR + PROTECTION  | 16 | * SP-04-0501 | ENSEMBLE DIFFUSEUR + PROTECTION D.  |
| 15 | * SP-04-0482 | ENSEMBLE COLLECTEUR + PROTECTION  | 16 | * SP-04-0502 | ENSEMBLE DIFFUSEUR + PROTECTION D.  |
| 15 | * SP-04-0483 | ENSEMBLE COLLECTEUR + PROTECTION  | 16 | * SP-04-0503 | ENSEMBLE DIFFUSEUR + PROTECTION D.  |
| 15 | * SP-04-0484 | ENSEMBLE COLLECTEUR + PROTECTION  |    |              |                                     |

**CODE**                    **TID-1050063, TID-1050075, TID-1050090, TID-1200075, TID-1200090,**  
**TID-1400075, TID-1400090, TID-1400110, TID-1600090, TID-1600110,**  
**TID-1600125, TID-1800090, TID-1800110, TID-1800125, TID-1800140,**  
**TID-2000110, TID-2000125, TID-2000140, TID-2000160**

**DESCRIPTION: FILTRE TEIDE INDUSTRIEL**

## OBSERVATIONS

| POS | CODE         | OBSERVATIONS  |
|-----|--------------|---|
| 8   | * SP-04-0450 | POUR: TID-1050063   |
| 8   | * SP-04-0451 | POUR: TID-1050075, TID-1200075, TID-1400075   |
| 8   | * SP-04-0315 | POUR: TID-1050090, TID-1200090, TID-1400090, TID-1600090, TID-1800090   |
| 8   | * SP-04-0452 | POUR: TID-1400110, TID-1600110, TID-1800110, TID-2000110  |
| 8   | * SP-04-0453 | POUR: TID-1600125, TID-1800125, TID-2000125   |
| 8   | * SP-04-0454 | POUR: TID-1800140, TID-2000140  |
| 8   | * SP-04-0455 | POUR: TID-2000160   |
| 10  | * SP-04-0456 | POUR: TID-1050063, TID-1050075, TID-1050090   |
| 10  | * SP-04-0457 | POUR: TID-1200075, TID-1200090  |
| 10  | * SP-04-0458 | POUR: TID-1400075, TID-1400090, TID-1400110   |
| 10  | * SP-04-0459 | POUR: TID-1600090, TID-1600110, TID-1600125   |
| 10  | * SP-04-0460 | POUR: TID-1800090, TID-1800110, TID-1800125, TID-1800140  |
| 10  | * SP-04-0461 | POUR: TID-2000110, TID-2000125, TID-2000140, TID-2000160  |
| 11  | * SP-04-0155 | POUR: TID-1050063, TID-1050075, TID-1050090   |
| 11  | * SP-04-0316 | POUR: TID-1200075, TID-1200090  |
| 11  | * SP-04-0462 | POUR: TID-1400075, TID-1400090, TID-1400110   |
| 11  | * SP-04-0463 | POUR: TID-1600090, TID-1600110, TID-1600125   |
| 11  | * SP-04-0464 | POUR: TID-1800090, TID-1800110, TID-1800125, TID-1800140  |
| 11  | * SP-04-0465 | POUR: TID-2000110, TID-2000125, TID-2000140, TID-2000160  |
| 12  | * SP-04-0147 | POUR: TID-1050063 [6UT], TID-1050075 [6UT], TID-1050090 [6UT], TID-1400075 [6UT], TID-1400090 [6UT], TID-1400110 [6UT], TID-1800090 [6UT], TID-1800110 [6UT], TID-1800125 [6UT], TID-1800140 [6UT], TID-2000110 [9UT], TID-2000125 [9UT], TID-2000140 [9UT], TID-2000160 [9UT]  |
| 12  | * SP-04-0150 | POUR: TID-1200075 [6UT], TID-1200090 [6UT], TID-1600090 [6UT], TID-1600110 [6UT], TID-1600125 [6UT], TID-1800090 [7UT], TID-1800110 [7UT], TID-1800125 [7UT], TID-1800140 [7UT], TID-2000110 [4UT], TID-2000125 [4UT], TID-2000140 [4UT], TID-2000160 [4UT]   |
| 13  | * SP-04-0146 | POUR: TID-1050063 [3UT], TID-1050075 [3UT], TID-1050090 [3UT], TID-1200075 [3UT], TID-1200090 [3UT], TID-1400075 [6UT], TID-1400090 [6UT], TID-1400110 [6UT], TID-1600090 [6UT], TID-1600110 [6UT], TID-1600125 [6UT], TID-1800090 [11UT], TID-1800110 [11UT], TID-1800125 [11UT], TID-1800140 [11UT], TID-2000110 [20UT], TID-2000125 [20UT], TID-2000140 [20UT], TID-2000160 [20UT] |
| 14  | * SP-04-0145 | POUR: TID-1050063 [3UT], TID-1050075 [3UT], TID-1050090 [3UT], TID-1200075 [3UT], TID-1200090 [3UT], TID-1400075 [6UT], TID-1400090 [6UT], TID-1400110 [6UT], TID-1600090 [6UT], TID-1600110 [6UT], TID-1600125 [6UT], TID-1800090 [11UT], TID-1800110 [11UT], TID-1800125 [11UT], TID-1800140 [11UT], TID-2000110 [20UT], TID-2000125 [20UT], TID-2000140 [20UT], TID-2000160 [20UT] |
| 15  | * SP-04-0466 | POUR: TID-1050063   |
| 15  | * SP-04-0467 | POUR: TID-1050075   |
| 15  | * SP-04-0468 | POUR: TID-1050090   |
| 15  | * SP-04-0469 | POUR: TID-1200075   |
| 15  | * SP-04-0470 | POUR: TID-1200090   |
| 15  | * SP-04-0471 | POUR: TID-1400075   |
| 15  | * SP-04-0472 | POUR: TID-1400090   |
| 15  | * SP-04-0473 | POUR: TID-1400110   |
| 15  | * SP-04-0474 | POUR: TID-1600090   |
| 15  | * SP-04-0475 | POUR: TID-1600110   |
| 15  | * SP-04-0476 | POUR: TID-1600125   |
| 15  | * SP-04-0477 | POUR: TID-1800090   |



# ÉCLATÉ

REV.: 0

9165

DATE: 09/06/2022

PAG.: 4/4

CODE

TID-1050063, TID-1050075, TID-1050090, TID-1200075, TID-1200090,  
TID-1400075, TID-1400090, TID-1400110, TID-1600090, TID-1600110,  
TID-1600125, TID-1800090, TID-1800110, TID-1800125, TID-1800140,  
TID-2000110, TID-2000125, TID-2000140, TID-2000160

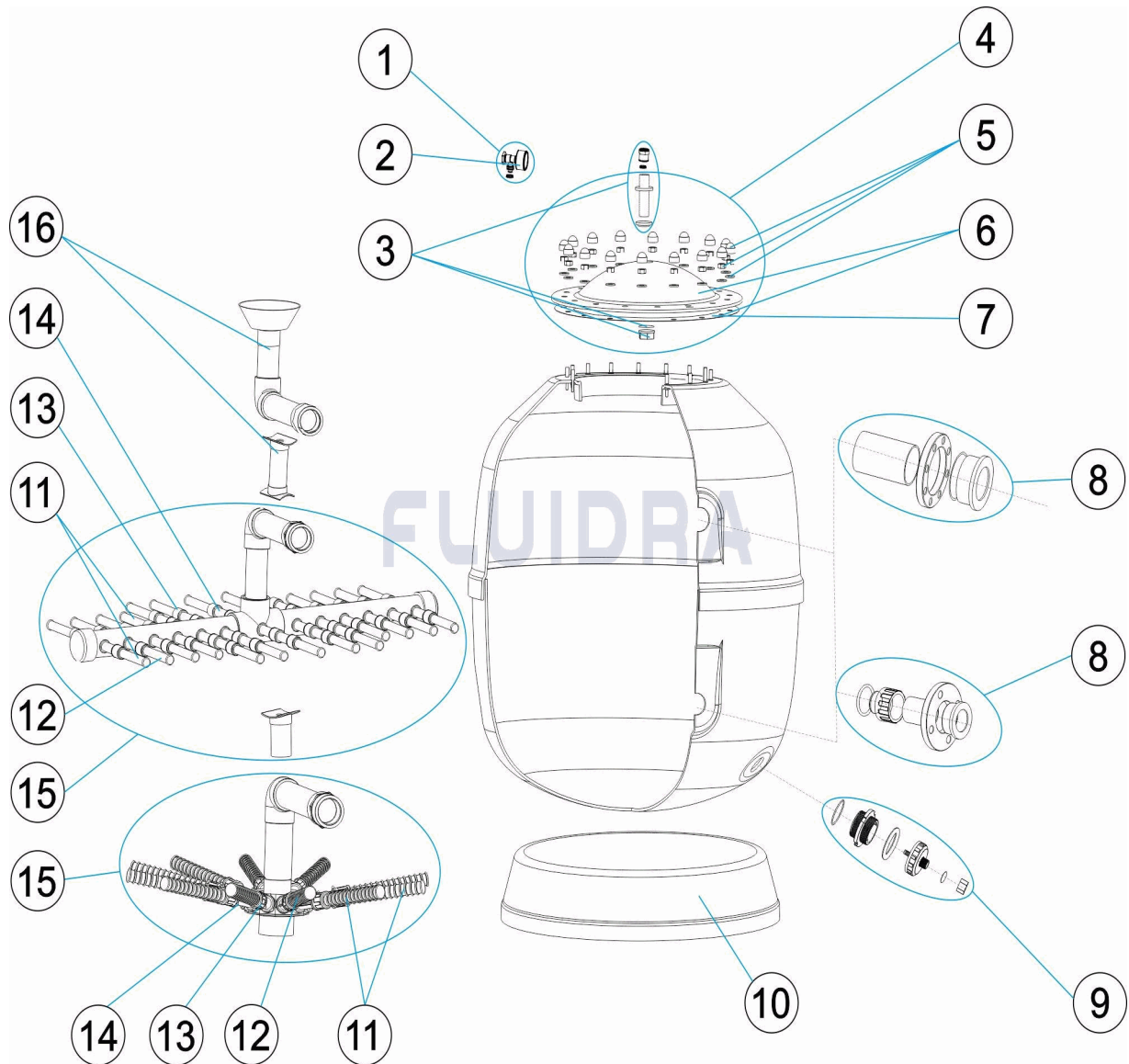
DESCRIPTION: FILTRE TEIDE INDUSTRIEL

|    |              |                   |
|----|--------------|-------------------|
| 15 | * SP-04-0478 | POUR: TID-1800110 |
| 15 | * SP-04-0479 | POUR: TID-1800125 |
| 15 | * SP-04-0480 | POUR: TID-1800140 |
| 15 | * SP-04-0481 | POUR: TID-2000110 |
| 15 | * SP-04-0482 | POUR: TID-2000125 |
| 15 | * SP-04-0483 | POUR: TID-2000140 |
| 15 | * SP-04-0484 | POUR: TID-2000160 |
| 16 | * SP-04-0485 | POUR: TID-1050063 |
| 16 | * SP-04-0486 | POUR: TID-1050075 |
| 16 | * SP-04-0487 | POUR: TID-1050090 |
| 16 | * SP-04-0488 | POUR: TID-1200075 |
| 16 | * SP-04-0489 | POUR: TID-1200090 |
| 16 | * SP-04-0490 | POUR: TID-1400075 |
| 16 | * SP-04-0491 | POUR: TID-1400090 |
| 16 | * SP-04-0492 | POUR: TID-1400110 |
| 16 | * SP-04-0493 | POUR: TID-1600090 |
| 16 | * SP-04-0494 | POUR: TID-1600110 |
| 16 | * SP-04-0495 | POUR: TID-1600125 |
| 16 | * SP-04-0496 | POUR: TID-1800090 |
| 16 | * SP-04-0497 | POUR: TID-1800110 |
| 16 | * SP-04-0498 | POUR: TID-1800125 |
| 16 | * SP-04-0499 | POUR: TID-1800140 |
| 16 | * SP-04-0500 | POUR: TID-2000110 |
| 16 | * SP-04-0501 | POUR: TID-2000125 |
| 16 | * SP-04-0502 | POUR: TID-2000140 |
| 16 | * SP-04-0503 | POUR: TID-2000160 |



CODE TID-1050063, TID-1050075, TID-1050090, TID-1200075, TID-1200090,  
TID-1400075, TID-1400090, TID-1400110, TID-1600090, TID-1600110,  
TID-1600125, TID-1800090, TID-1800110, TID-1800125, TID-1800140,  
TID-2000110, TID-2000125, TID-2000140, TID-2000160

DESCRIPTION: TEIDE INDUSTRIAL FILTER



**ENGLISH**

| POS | CODE         | DESCRIPTION                   | QUANTITY | POS | CODE         | DESCRIPTION                       | QUANTITY |
|-----|--------------|-------------------------------|----------|-----|--------------|-----------------------------------|----------|
| 1   | SP-04-0071   | COMPLETE PRESSURE GAUGE UNIT  |          | 10  | * SP-04-0456 | FILTER BASE D.1050                |          |
| 2   | SP-04-0072   | PRESSURE GAUGE 1/8" 3 KG./C " |          | 10  | * SP-04-0457 | FILTER BASE D.1200                |          |
| 3   | SP-04-0300   | PRESSURE GAUGE ANCHOR         |          | 10  | * SP-04-0458 | FILTER BASE D.1400                |          |
| 4   | SP-04-0302   | FILTER LID UNIT               |          | 10  | * SP-04-0459 | FILTER BASE D.1600                |          |
| 5   | SP-04-0303   | FILTER LID BOLTS              |          | 10  | * SP-04-0460 | FILTER BASE D.1800                |          |
| 6   | SP-04-0304   | FILTER LID + GASKET           |          | 10  | * SP-04-0461 | FILTER BASE D.2000                |          |
| 7   | SP-04-0305   | LID "O" RING                  |          | 11  | * SP-04-0155 | MANIFOLD ARM ASSEMBLY D. 950-1050 |          |
| 8   | * SP-04-0450 | SET OUTLET D.63 VOLCANO       |          | 11  | * SP-04-0316 | MANIFOLD ARM ASSEMBLY D. 1200     |          |
| 8   | * SP-04-0451 | SET OUTLET D.75               |          | 11  | * SP-04-0462 | MANIFOLD ARM ASSEMBLY D. 1400     |          |
| 8   | * SP-04-0315 | D. 90 - 3" OUTLET ASSEMBL "   |          | 11  | * SP-04-0463 | MANIFOLD ARM ASSEMBLY D. 1600     |          |



# PARTS BREAKDOWN

REV.: 0

9165

DATE: 09/06/2022

SHEET: 2/4

CODE

TID-1050063, TID-1050075, TID-1050090, TID-1200075, TID-1200090,  
 TID-1400075, TID-1400090, TID-1400110, TID-1600090, TID-1600110,  
 TID-1600125, TID-1800090, TID-1800110, TID-1800125, TID-1800140,  
 TID-2000110, TID-2000125, TID-2000140, TID-2000160

DESCRIPTION: TEIDE INDUSTRIAL FILTER

|    |              |                                     |    |              |                                      |
|----|--------------|-------------------------------------|----|--------------|--------------------------------------|
| 8  | * SP-04-0452 | SET OUTLET D.110 VOLCANO            | 11 | * SP-04-0464 | MANIFOLD ARM ASSEMBLY D. 1800        |
| 8  | * SP-04-0453 | SET OUTLET D.125 VOLCANO            | 11 | * SP-04-0465 | MANIFOLD ARM ASSEMBLY D. 2000        |
| 8  | * SP-04-0454 | SET OUTLET D.140 VOLCANO            | 12 | * SP-04-0147 | MANIFOLD ARM 1" 225 M "              |
| 8  | * SP-04-0455 | SET OUTLET D.160 VOLCANO            | 12 | * SP-04-0150 | COLLECTOR ARM 1" 265 M "             |
| 9  | SP-04-0439   | SAND - WATER UNLOAD                 | 13 | * SP-04-0146 | UNION 1"                             |
| 14 | * SP-04-0145 | MANIFOLD ARM 1" 100 M "             | 16 | * SP-04-0485 | DIFFUSER ASSEMBLY D. 63 - 1050       |
| 15 | * SP-04-0466 | COLLECTOR ASSEMBLY D. 63 - 1050     | 16 | * SP-04-0486 | DIFFUSER ASSEMBLY D. 75 - 1050       |
| 15 | * SP-04-0467 | COLLECTOR ASSEMBLY D. 75 - 1050     | 16 | * SP-04-0487 | DIFFUSER ASSEMBLY D. 90 - 1050       |
| 15 | * SP-04-0468 | COLLECTOR ASSEMBLY D. 90 - 1050     | 16 | * SP-04-0488 | DIFFUSER ASSEMBLY D. 75 - 1200       |
| 15 | * SP-04-0469 | COLLECTOR ASSEMBLY D. 75 - 1200     | 16 | * SP-04-0489 | DIFFUSER ASSEMBLY D. 90 - 1200       |
| 15 | * SP-04-0470 | COLLECTOR ASSEMBLY D. 90 - 1200     | 16 | * SP-04-0490 | DIFFUSER ASSEMBLY D. 75 - 1400       |
| 15 | * SP-04-0471 | COLLECTOR ASSEMBLY D. 75 - 1400     | 16 | * SP-04-0491 | DIFFUSER ASSEMBLY D. 90 - 1400       |
| 15 | * SP-04-0472 | COLLECTOR ASSEMBLY D. 90 - 1400     | 16 | * SP-04-0492 | DIFFUSER ASSEMBLY D. 110 - 1400      |
| 15 | * SP-04-0473 | COLLECTOR ASSEMBLY D. 110 - 1400    | 16 | * SP-04-0493 | DIFFUSER ASSEMBLY D. 90 - 1600       |
| 15 | * SP-04-0474 | COLLECTOR ASSEMBLY D. 90 - 1600     | 16 | * SP-04-0494 | DIFFUSER ASSEMBLY D. 110 - 1600      |
| 15 | * SP-04-0475 | COLLECTOR ASSEMBLY D. 110 - 1600    | 16 | * SP-04-0495 | DIFFUSER ASSEMBLY D. 125 - 1600      |
| 15 | * SP-04-0476 | COLLECTOR ASSEMBLY D. 125 - 1600    | 16 | * SP-04-0496 | DIFFUSER ASSEMBLY + SUPPORT D. 900 - |
| 15 | * SP-04-0477 | COLLECTOR ASSEMBLY + SUPPORT D. 90  | 16 | * SP-04-0497 | DIFFUSER ASSEMBLY + SUPPORT D. 110 - |
| 15 | * SP-04-0478 | COLLECTOR ASSEMBLY + SUPPORT D. 110 | 16 | * SP-04-0498 | DIFFUSER ASSEMBLY + SUPPORT D. 125 - |
| 15 | * SP-04-0479 | COLLECTOR ASSEMBLY + SUPPORT D. 12  | 16 | * SP-04-0499 | DIFFUSER ASSEMBLY + SUPPORT D. 140 - |
| 15 | * SP-04-0480 | COLLECTOR ASSEMBLY + SUPPORT D. 14  | 16 | * SP-04-0500 | DIFFUSER ASSEMBLY + SUPPORT D. 110 - |
| 15 | * SP-04-0481 | COLLECTOR ASSEMBLY + SUPPORT D. 110 | 16 | * SP-04-0501 | DIFFUSER ASSEMBLY + SUPPORT D. 125 - |
| 15 | * SP-04-0482 | COLLECTOR ASSEMBLY + SUPPORT D. 12  | 16 | * SP-04-0502 | DIFFUSER ASSEMBLY + SUPPORT D. 140 - |
| 15 | * SP-04-0483 | COLLECTOR ASSEMBLY + SUPPORT D. 14  | 16 | * SP-04-0503 | DIFFUSER ASSEMBLY + SUPPORT D. 160 - |
| 15 | * SP-04-0484 | COLLECTOR ASSEMBLY + SUPPORT D. 16  |    |              |                                      |

\* SEE OBSERVATIONS SHEET



# PARTS BREAKDOWN

REV.: 0  
DATE: 09/06/2022  
SHEET: 3/4

9165

CODE TID-1050063, TID-1050075, TID-1050090, TID-1200075, TID-1200090,  
TID-1400075, TID-1400090, TID-1400110, TID-1600090, TID-1600110,  
TID-1600125, TID-1800090, TID-1800110, TID-1800125, TID-1800140,  
TID-2000110, TID-2000125, TID-2000140, TID-2000160

DESCRIPTION: TEIDE INDUSTRIAL FILTER

## OBSERVATIONS

| POS | CODE         | OBSERVATIONS   |
|-----|--------------|--|
| 8   | * SP-04-0450 | FOR: TID-1050063   |
| 8   | * SP-04-0451 | FOR: TID-1050075, TID-1200075, TID-1400075   |
| 8   | * SP-04-0315 | FOR: TID-1050090, TID-1200090, TID-1400090, TID-1600090, TID-1800090   |
| 8   | * SP-04-0452 | FOR: TID-1400110, TID-1600110, TID-1800110, TID-2000110  |
| 8   | * SP-04-0453 | FOR: TID-1600125, TID-1800125, TID-2000125   |
| 8   | * SP-04-0454 | FOR: TID-1800140, TID-2000140  |
| 8   | * SP-04-0455 | FOR: TID-2000160   |
| 10  | * SP-04-0456 | FOR: TID-1050063, TID-1050075, TID-1050090   |
| 10  | * SP-04-0457 | FOR: TID-1200075, TID-1200090  |
| 10  | * SP-04-0458 | FOR: TID-1400075, TID-1400090, TID-1400110   |
| 10  | * SP-04-0459 | FOR: TID-1600090, TID-1600110, TID-1600125   |
| 10  | * SP-04-0460 | FOR: TID-1800090, TID-1800110, TID-1800125, TID-1800140  |
| 10  | * SP-04-0461 | FOR: TID-2000110, TID-2000125, TID-2000140, TID-2000160  |
| 11  | * SP-04-0155 | FOR: TID-1050063, TID-1050075, TID-1050090   |
| 11  | * SP-04-0316 | FOR: TID-1200075, TID-1200090  |
| 11  | * SP-04-0462 | FOR: TID-1400075, TID-1400090, TID-1400110   |
| 11  | * SP-04-0463 | FOR: TID-1600090, TID-1600110, TID-1600125   |
| 11  | * SP-04-0464 | FOR: TID-1800090, TID-1800110, TID-1800125, TID-1800140  |
| 11  | * SP-04-0465 | FOR: TID-2000110, TID-2000125, TID-2000140, TID-2000160  |
| 12  | * SP-04-0147 | FOR: TID-1050063 [6UT], TID-1050075 [6UT], TID-1050090 [6UT], TID-1400075 [6UT], TID-1400090 [6UT], TID-1400110 [6UT], TID-1800090 [6UT], TID-1800110 [6UT], TID-1800125 [6UT], TID-1800140 [6UT], TID-2000110 [9UT], TID-2000125 [9UT], TID-2000140 [9UT], TID-2000160 [9UT]  |
| 12  | * SP-04-0150 | FOR: TID-1200075 [6UT], TID-1200090 [6UT], TID-1600090 [6UT], TID-1600110 [6UT], TID-1600125 [6UT], TID-1800090 [7UT], TID-1800110 [7UT], TID-1800125 [7UT], TID-1800140 [7UT], TID-2000110 [4UT], TID-2000125 [4UT], TID-2000140 [4UT], TID-2000160 [4UT]   |
| 13  | * SP-04-0146 | FOR: TID-1050063 [3UT], TID-1050075 [3UT], TID-1050090 [3UT], TID-1200075 [3UT], TID-1200090 [3UT], TID-1400075 [6UT], TID-1400090 [6UT], TID-1400110 [6UT], TID-1600090 [6UT], TID-1600110 [6UT], TID-1600125 [6UT], TID-1800090 [11UT], TID-1800110 [11UT], TID-1800125 [11UT], TID-1800140 [11UT], TID-2000110 [20UT], TID-2000125 [20UT], TID-2000140 [20UT], TID-2000160 [20UT] |
| 14  | * SP-04-0145 | FOR: TID-1050063 [3UT], TID-1050075 [3UT], TID-1050090 [3UT], TID-1200075 [3UT], TID-1200090 [3UT], TID-1400075 [6UT], TID-1400090 [6UT], TID-1400110 [6UT], TID-1600090 [6UT], TID-1600110 [6UT], TID-1600125 [6UT], TID-1800090 [11UT], TID-1800110 [11UT], TID-1800125 [11UT], TID-1800140 [11UT], TID-2000110 [20UT], TID-2000125 [20UT], TID-2000140 [20UT], TID-2000160 [20UT] |
| 15  | * SP-04-0466 | FOR: TID-1050063   |
| 15  | * SP-04-0467 | FOR: TID-1050075   |
| 15  | * SP-04-0468 | FOR: TID-1050090   |
| 15  | * SP-04-0469 | FOR: TID-1200075   |
| 15  | * SP-04-0470 | FOR: TID-1200090   |
| 15  | * SP-04-0471 | FOR: TID-1400075   |
| 15  | * SP-04-0472 | FOR: TID-1400090   |
| 15  | * SP-04-0473 | FOR: TID-1400110   |
| 15  | * SP-04-0474 | FOR: TID-1600090   |
| 15  | * SP-04-0475 | FOR: TID-1600110   |
| 15  | * SP-04-0476 | FOR: TID-1600125   |
| 15  | * SP-04-0477 | FOR: TID-1800090   |

\* SEE OBSERVATIONS SHEET



# PARTS BREAKDOWN

REV.: 0  
DATE: 09/06/2022  
SHEET: 4/4

9165

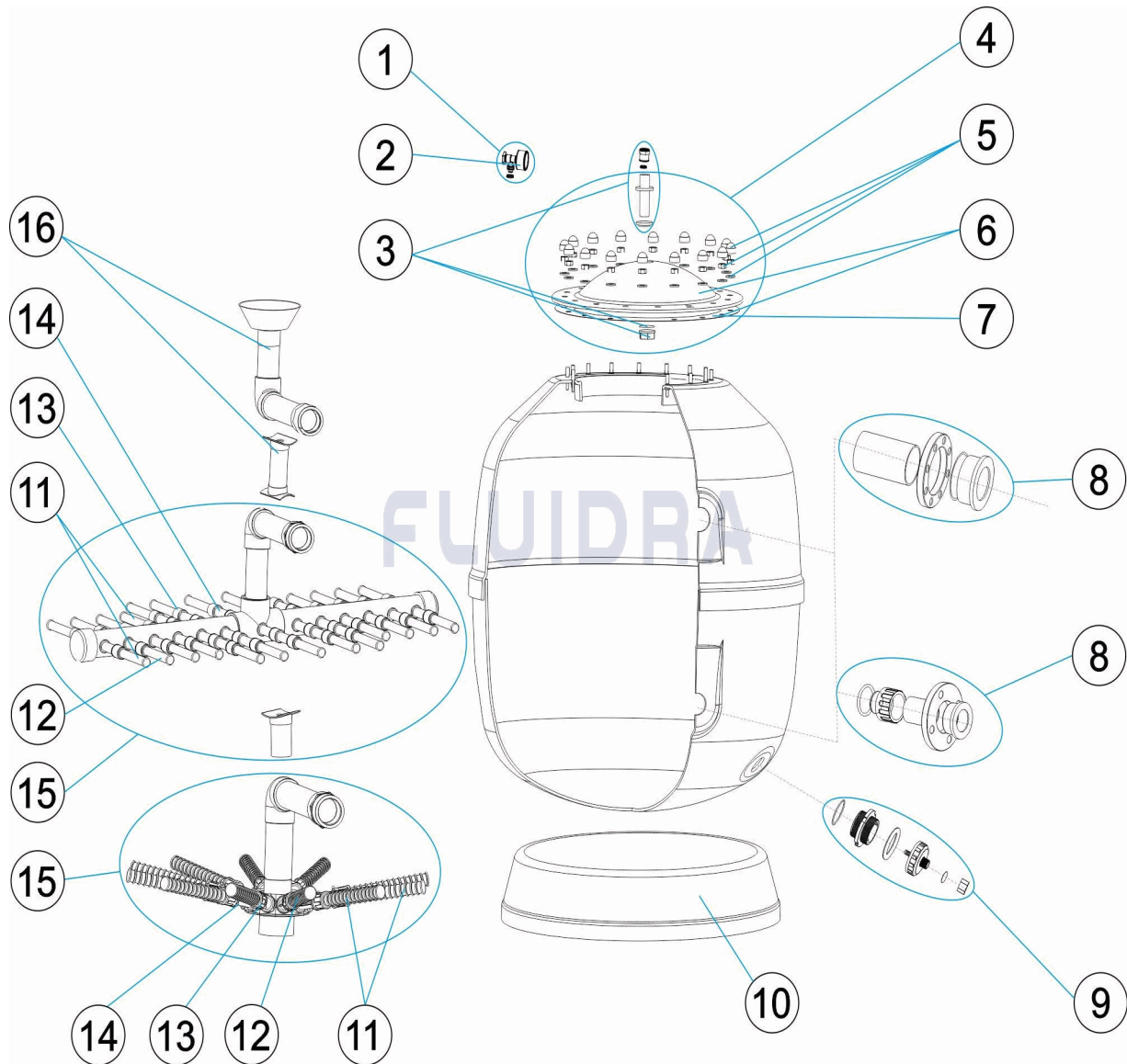
CODE                    **TID-1050063, TID-1050075, TID-1050090, TID-1200075, TID-1200090,  
TID-1400075, TID-1400090, TID-1400110, TID-1600090, TID-1600110,  
TID-1600125, TID-1800090, TID-1800110, TID-1800125, TID-1800140,  
TID-2000110, TID-2000125, TID-2000140, TID-2000160**

DESCRIPTION: **TEIDE INDUSTRIAL FILTER**

|    |              |                  |
|----|--------------|------------------|
| 15 | * SP-04-0478 | FOR: TID-1800110 |
| 15 | * SP-04-0479 | FOR: TID-1800125 |
| 15 | * SP-04-0480 | FOR: TID-1800140 |
| 15 | * SP-04-0481 | FOR: TID-2000110 |
| 15 | * SP-04-0482 | FOR: TID-2000125 |
| 15 | * SP-04-0483 | FOR: TID-2000140 |
| 15 | * SP-04-0484 | FOR: TID-2000160 |
| 16 | * SP-04-0485 | FOR: TID-1050063 |
| 16 | * SP-04-0486 | FOR: TID-1050075 |
| 16 | * SP-04-0487 | FOR: TID-1050090 |
| 16 | * SP-04-0488 | FOR: TID-1200075 |
| 16 | * SP-04-0489 | FOR: TID-1200090 |
| 16 | * SP-04-0490 | FOR: TID-1400075 |
| 16 | * SP-04-0491 | FOR: TID-1400090 |
| 16 | * SP-04-0492 | FOR: TID-1400110 |
| 16 | * SP-04-0493 | FOR: TID-1600090 |
| 16 | * SP-04-0494 | FOR: TID-1600110 |
| 16 | * SP-04-0495 | FOR: TID-1600125 |
| 16 | * SP-04-0496 | FOR: TID-1800090 |
| 16 | * SP-04-0497 | FOR: TID-1800110 |
| 16 | * SP-04-0498 | FOR: TID-1800125 |
| 16 | * SP-04-0499 | FOR: TID-1800140 |
| 16 | * SP-04-0500 | FOR: TID-2000110 |
| 16 | * SP-04-0501 | FOR: TID-2000125 |
| 16 | * SP-04-0502 | FOR: TID-2000140 |
| 16 | * SP-04-0503 | FOR: TID-2000160 |

**CODICE** TID-1050063, TID-1050075, TID-1050090, TID-1200075, TID-1200090, TID-1400075, TID-1400090, TID-1400110, TID-1600090, TID-1600110, TID-1600125, TID-1800090, TID-1800110, TID-1800125, TID-1800140, TID-2000110, TID-2000125, TID-2000140, TID-2000160

**DESCRIZIONE:** FILTRI TEIDE INDUSTRIALE



**ITALIANO**

| POS | CODICE       | DESCRIZIONE                    | QUANTITA' | POS | CODICE       | DESCRIZIONE                       | QUANTITA' |
|-----|--------------|--------------------------------|-----------|-----|--------------|-----------------------------------|-----------|
| 1   | SP-04-0071   | MANOMETRO COMPLETO             |           | 10  | * SP-04-0456 | BASE FILTRO D.1050                |           |
| 2   | SP-04-0072   | MANOMETRO 1/8" 3 KG./C "       |           | 10  | * SP-04-0457 | BASE FILTRO D.1200                |           |
| 3   | SP-04-0300   | FISSAGGIO MANOMETRO            |           | 10  | * SP-04-0458 | BASE FILTRO D.1400                |           |
| 4   | SP-04-0302   | COPERCHIO FILTRO COMPLETO      |           | 10  | * SP-04-0459 | BASE FILTRO D.1600                |           |
| 5   | SP-04-0303   | BULLONERIA COPERCHIO FILTRO    |           | 10  | * SP-04-0460 | BASE FILTRO D.1800                |           |
| 6   | SP-04-0304   | COPERCHIO FILTRO + GUARNIZIONE |           | 10  | * SP-04-0461 | BASE FILTRO D.2000                |           |
| 7   | SP-04-0305   | O-RING COPERCHIO               |           | 11  | * SP-04-0155 | GRUPPO CANDELOTTO COLLECTORE D. 9 |           |
| 8   | * SP-04-0450 | GRUPPO USCITA D.63 VOLCANO     |           | 11  | * SP-04-0316 | GRUPPO CANDELOTTO COLLECTORE D. 1 |           |
| 8   | * SP-04-0451 | GRUPPO USCITA D.75             |           | 11  | * SP-04-0462 | GRUPPO CANDELOTTO COLLECTORE D. 1 |           |
| 8   | * SP-04-0315 | GRUPPO USCITA D. 90 - 3"       |           | 11  | * SP-04-0463 | GRUPPO CANDELOTTO COLLECTORE D. 1 |           |

**\* SI FACCIA RIFERIMENTO AL FOGLIO DELLE OSSERVAZIONI**

**CODICE**                    **TID-1050063, TID-1050075, TID-1050090, TID-1200075, TID-1200090,**  
**TID-1400075, TID-1400090, TID-1400110, TID-1600090, TID-1600110,**  
**TID-1600125, TID-1800090, TID-1800110, TID-1800125, TID-1800140,**  
**TID-2000110, TID-2000125, TID-2000140, TID-2000160**

**DESCRIZIONE: FILTRI TEIDE INDUSTRIALE**

|    |              |                                       |    |              |                                    |
|----|--------------|---------------------------------------|----|--------------|------------------------------------|
| 8  | * SP-04-0452 | GRUPPO USCITA D.110 VOLCANO           | 11 | * SP-04-0464 | GRUPPO CANDELOTTO COLLECTORE D. 1  |
| 8  | * SP-04-0453 | GRUPPO USCITA D.125 VOLCANO           | 11 | * SP-04-0465 | GRUPPO CANDELOTTO COLLECTORE D. 2  |
| 8  | * SP-04-0454 | GRUPPO USCITA D.140 VOLCANO           | 12 | * SP-04-0147 | CANDELOTTO COLLECTORE 1" 225 M "   |
| 8  | * SP-04-0455 | GRUPPO USCITA D.160 VOLCANO           | 12 | * SP-04-0150 | CANDELOTTO 1" 265 M/M "            |
| 9  | SP-04-0439   | SCARICA SABBIA - ACQUA                | 13 | * SP-04-0146 | MANICOTTO DA 1" PER CANDELOTT "    |
| 14 | * SP-04-0145 | CANDELOTTO COLLECTORE 1" 100M "       | 16 | * SP-04-0485 | RACCORDO DIFFUSORE D. 63 - 1050    |
| 15 | * SP-04-0466 | KIT COLLETTORE D. 63 - 1050           | 16 | * SP-04-0486 | RACCORDO DIFFUSORE D. 75 - 1050    |
| 15 | * SP-04-0467 | KIT COLLETTORE D. 75 - 1050           | 16 | * SP-04-0487 | RACCORDO DIFFUSORE D. 90 - 1050    |
| 15 | * SP-04-0468 | KIT COLLETTORE D. 90 - 1050           | 16 | * SP-04-0488 | RACCORDO DIFFUSORE D. 75 - 1200    |
| 15 | * SP-04-0469 | KIT COLLETTORE D. 75 - 1200           | 16 | * SP-04-0489 | RACCORDO DIFFUSORE D. 90 - 1200    |
| 15 | * SP-04-0470 | KIT COLLETTORE D. 90 - 1200           | 16 | * SP-04-0490 | RACCORDO DIFFUSORE D. 75 - 1400    |
| 15 | * SP-04-0471 | KIT COLLETTORE D. 75 - 1400           | 16 | * SP-04-0491 | RACCORDO DIFFUSORE D. 90 - 1400    |
| 15 | * SP-04-0472 | KIT COLLETTORE D. 90 - 1400           | 16 | * SP-04-0492 | RACCORDO DIFFUSORE D. 110 - 1400   |
| 15 | * SP-04-0473 | KIT COLLETTORE D. 110 - 1400          | 16 | * SP-04-0493 | RACCORDO DIFFUSORE D. 90 - 1600    |
| 15 | * SP-04-0474 | KIT COLLETTORE D. 90 - 1600           | 16 | * SP-04-0494 | RACCORDO DIFFUSORE D. 110 - 1600   |
| 15 | * SP-04-0475 | KIT COLLETTORE D. 110 - 1600          | 16 | * SP-04-0495 | RACCORDO DIFFUSORE D. 125 - 1600   |
| 15 | * SP-04-0476 | KIT COLLETTORE D. 125 - 1600          | 16 | * SP-04-0496 | RACCORDO DIFFUSORE + SUPPORTO D. 9 |
| 15 | * SP-04-0477 | KIT COLLETTORE + SUPPORTO D. 900 - 18 | 16 | * SP-04-0497 | RACCORDO DIFFUSORE + SUPPORTO D. 1 |
| 15 | * SP-04-0478 | KIT COLLETTORE + SUPPORTO D. 110 - 18 | 16 | * SP-04-0498 | RACCORDO DIFFUSORE + SUPPORTO D. 1 |
| 15 | * SP-04-0479 | KIT COLLETTORE + SUPPORTO D. 125 - 18 | 16 | * SP-04-0499 | RACCORDO DIFFUSORE + SUPPORTO D. 1 |
| 15 | * SP-04-0480 | KIT COLLETTORE + SUPPORTO D. 140 - 18 | 16 | * SP-04-0500 | RACCORDO DIFFUSORE + SUPPORTO D. 1 |
| 15 | * SP-04-0481 | KIT COLLETTORE + SUPPORTO D. 110 - 20 | 16 | * SP-04-0501 | RACCORDO DIFFUSORE + SUPPORTO D. 1 |
| 15 | * SP-04-0482 | KIT COLLETTORE + SUPPORTO D. 125 - 20 | 16 | * SP-04-0502 | RACCORDO DIFFUSORE + SUPPORTO D. 1 |
| 15 | * SP-04-0483 | KIT COLLETTORE + SUPPORTO D. 140 - 20 | 16 | * SP-04-0503 | RACCORDO DIFFUSORE + SUPPORTO D. 1 |
| 15 | * SP-04-0484 | KIT COLLETTORE + SUPPORTO D. 160 - 20 |    |              |                                    |

**CODICE**            **TID-1050063, TID-1050075, TID-1050090, TID-1200075, TID-1200090, TID-1400075, TID-1400090, TID-1400110, TID-1600090, TID-1600110, TID-1600125, TID-1800090, TID-1800110, TID-1800125, TID-1800140, TID-2000110, TID-2000125, TID-2000140, TID-2000160**

**DESCRIZIONE: FILTRI TEIDE INDUSTRIALE**

## OSSERVAZIONI

| POS | CODICE       | OSSERVAZIONI   |
|-----|--------------|--|
| 8   | * SP-04-0450 | PER: TID-1050063   |
| 8   | * SP-04-0451 | PER: TID-1050075, TID-1200075, TID-1400075   |
| 8   | * SP-04-0315 | PER: TID-1050090, TID-1200090, TID-1400090, TID-1600090, TID-1800090   |
| 8   | * SP-04-0452 | PER: TID-1400110, TID-1600110, TID-1800110, TID-2000110  |
| 8   | * SP-04-0453 | PER: TID-1600125, TID-1800125, TID-2000125   |
| 8   | * SP-04-0454 | PER: TID-1800140, TID-2000140  |
| 8   | * SP-04-0455 | PER: TID-2000160   |
| 10  | * SP-04-0456 | PER: TID-1050063, TID-1050075, TID-1050090   |
| 10  | * SP-04-0457 | PER: TID-1200075, TID-1200090  |
| 10  | * SP-04-0458 | PER: TID-1400075, TID-1400090, TID-1400110   |
| 10  | * SP-04-0459 | PER: TID-1600090, TID-1600110, TID-1600125   |
| 10  | * SP-04-0460 | PER: TID-1800090, TID-1800110, TID-1800125, TID-1800140  |
| 10  | * SP-04-0461 | PER: TID-2000110, TID-2000125, TID-2000140, TID-2000160  |
| 11  | * SP-04-0155 | PER: TID-1050063, TID-1050075, TID-1050090   |
| 11  | * SP-04-0316 | PER: TID-1200075, TID-1200090  |
| 11  | * SP-04-0462 | PER: TID-1400075, TID-1400090, TID-1400110   |
| 11  | * SP-04-0463 | PER: TID-1600090, TID-1600110, TID-1600125   |
| 11  | * SP-04-0464 | PER: TID-1800090, TID-1800110, TID-1800125, TID-1800140  |
| 11  | * SP-04-0465 | PER: TID-2000110, TID-2000125, TID-2000140, TID-2000160  |
| 12  | * SP-04-0147 | PER: TID-1050063 [6UT], TID-1050075 [6UT], TID-1050090 [6UT], TID-1400075 [6UT], TID-1400090 [6UT], TID-1400110 [6UT], TID-1800090 [6UT], TID-1800110 [6UT], TID-1800125 [6UT], TID-1800140 [6UT], TID-2000110 [9UT], TID-2000125 [9UT], TID-2000140 [9UT], TID-2000160 [9UT]  |
| 12  | * SP-04-0150 | PER: TID-1200075 [6UT], TID-1200090 [6UT], TID-1600090 [6UT], TID-1600110 [6UT], TID-1600125 [6UT], TID-1800090 [7UT], TID-1800110 [7UT], TID-1800125 [7UT], TID-1800140 [7UT], TID-2000110 [4UT], TID-2000125 [4UT], TID-2000140 [4UT], TID-2000160 [4UT]   |
| 13  | * SP-04-0146 | PER: TID-1050063 [3UT], TID-1050075 [3UT], TID-1050090 [3UT], TID-1200075 [3UT], TID-1200090 [3UT], TID-1400075 [6UT], TID-1400090 [6UT], TID-1400110 [6UT], TID-1600090 [6UT], TID-1600110 [6UT], TID-1600125 [6UT], TID-1800090 [11UT], TID-1800110 [11UT], TID-1800125 [11UT], TID-1800140 [11UT], TID-2000110 [20UT], TID-2000125 [20UT], TID-2000140 [20UT], TID-2000160 [20UT] |
| 14  | * SP-04-0145 | PER: TID-1050063 [3UT], TID-1050075 [3UT], TID-1050090 [3UT], TID-1200075 [3UT], TID-1200090 [3UT], TID-1400075 [6UT], TID-1400090 [6UT], TID-1400110 [6UT], TID-1600090 [6UT], TID-1600110 [6UT], TID-1600125 [6UT], TID-1800090 [11UT], TID-1800110 [11UT], TID-1800125 [11UT], TID-1800140 [11UT], TID-2000110 [20UT], TID-2000125 [20UT], TID-2000140 [20UT], TID-2000160 [20UT] |
| 15  | * SP-04-0466 | PER: TID-1050063   |
| 15  | * SP-04-0467 | PER: TID-1050075   |
| 15  | * SP-04-0468 | PER: TID-1050090   |
| 15  | * SP-04-0469 | PER: TID-1200075   |
| 15  | * SP-04-0470 | PER: TID-1200090   |
| 15  | * SP-04-0471 | PER: TID-1400075   |
| 15  | * SP-04-0472 | PER: TID-1400090   |
| 15  | * SP-04-0473 | PER: TID-1400110   |
| 15  | * SP-04-0474 | PER: TID-1600090   |
| 15  | * SP-04-0475 | PER: TID-1600110   |
| 15  | * SP-04-0476 | PER: TID-1600125   |
| 15  | * SP-04-0477 | PER: TID-1800090   |



# ESPLOSO

REV.: 0  
DATA: 09/06/2022  
PAG.: 4/4

9165

**CODICE**                    **TID-1050063, TID-1050075, TID-1050090, TID-1200075, TID-1200090,  
TID-1400075, TID-1400090, TID-1400110, TID-1600090, TID-1600110,  
TID-1600125, TID-1800090, TID-1800110, TID-1800125, TID-1800140,  
TID-2000110, TID-2000125, TID-2000140, TID-2000160**

**DESCRIZIONE: FILTRI TEIDE INDUSTRIALE**

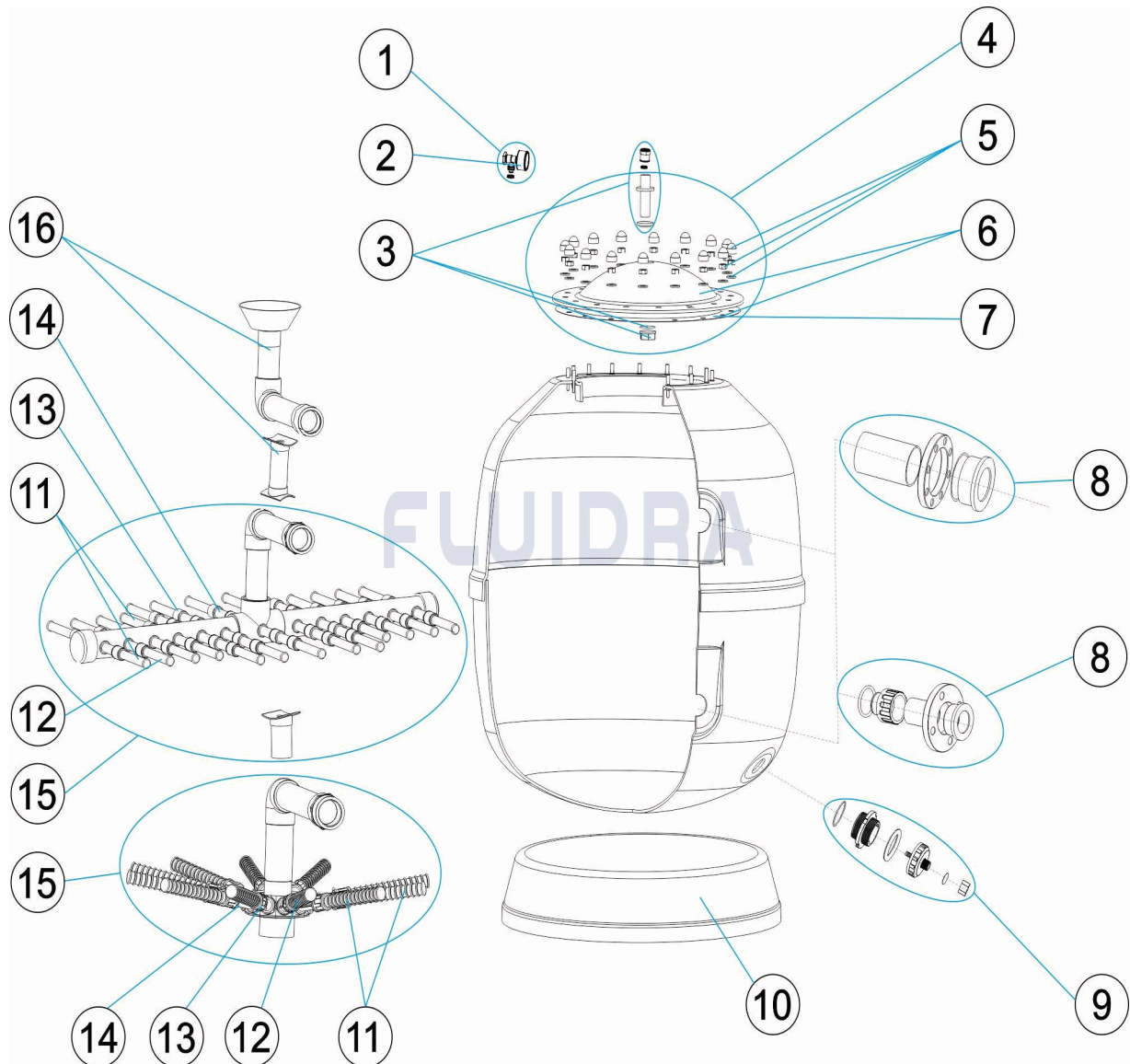
|    |              |                  |
|----|--------------|------------------|
| 15 | * SP-04-0478 | PER: TID-1800110 |
| 15 | * SP-04-0479 | PER: TID-1800125 |
| 15 | * SP-04-0480 | PER: TID-1800140 |
| 15 | * SP-04-0481 | PER: TID-2000110 |
| 15 | * SP-04-0482 | PER: TID-2000125 |
| 15 | * SP-04-0483 | PER: TID-2000140 |
| 15 | * SP-04-0484 | PER: TID-2000160 |
| 16 | * SP-04-0485 | PER: TID-1050063 |
| 16 | * SP-04-0486 | PER: TID-1050075 |
| 16 | * SP-04-0487 | PER: TID-1050090 |
| 16 | * SP-04-0488 | PER: TID-1200075 |
| 16 | * SP-04-0489 | PER: TID-1200090 |
| 16 | * SP-04-0490 | PER: TID-1400075 |
| 16 | * SP-04-0491 | PER: TID-1400090 |
| 16 | * SP-04-0492 | PER: TID-1400110 |
| 16 | * SP-04-0493 | PER: TID-1600090 |
| 16 | * SP-04-0494 | PER: TID-1600110 |
| 16 | * SP-04-0495 | PER: TID-1600125 |
| 16 | * SP-04-0496 | PER: TID-1800090 |
| 16 | * SP-04-0497 | PER: TID-1800110 |
| 16 | * SP-04-0498 | PER: TID-1800125 |
| 16 | * SP-04-0499 | PER: TID-1800140 |
| 16 | * SP-04-0500 | PER: TID-2000110 |
| 16 | * SP-04-0501 | PER: TID-2000125 |
| 16 | * SP-04-0502 | PER: TID-2000140 |
| 16 | * SP-04-0503 | PER: TID-2000160 |



CODE

TID-1050063, TID-1050075, TID-1050090, TID-1200075, TID-1200090,  
 TID-1400075, TID-1400090, TID-1400110, TID-1600090, TID-1600110,  
 TID-1600125, TID-1800090, TID-1800110, TID-1800125, TID-1800140,  
 TID-2000110, TID-2000125, TID-2000140, TID-2000160

BESCHREIBUNG: FILTER TEIDE INDUSTRIAL


**DEUTSCH**

| POS | CODE         | BESCHREIBUNG                 | MENGE | POS          | CODE                                 | BESCHREIBUNG | MENGE |
|-----|--------------|------------------------------|-------|--------------|--------------------------------------|--------------|-------|
| 1   | SP-04-0071   | MANOMETER KOMPLETT           | 10    | * SP-04-0456 | FILTERFUSS D.1050                    |              |       |
| 2   | SP-04-0072   | MANOMETER 1/8" 3 KG/C "      | 10    | * SP-04-0457 | FILTERFUSS D.1200                    |              |       |
| 3   | SP-04-0300   | FIXIERUNG MANOMETER          | 10    | * SP-04-0458 | FILTERFUSS D.1400                    |              |       |
| 4   | SP-04-0302   | FILTERDECKEL KOMPLETT        | 10    | * SP-04-0459 | FILTERFUSS D.1600                    |              |       |
| 5   | SP-04-0303   | SCHRAUBENSATZ FILTERDECKEL   | 10    | * SP-04-0460 | FILTERFUSS D.1800                    |              |       |
| 6   | SP-04-0304   | FILTERDECKEL UND DICHTUNG    | 10    | * SP-04-0461 | FILTERFUSS D.2000                    |              |       |
| 7   | SP-04-0305   | O-RING ABDECKUNG             | 11    | * SP-04-0155 | SET FILTERSTERN-SCHLITZROHR D. 950 - |              |       |
| 8   | * SP-04-0450 | GRUPPE AUSGANG D. 63 VOLCANO | 11    | * SP-04-0316 | SET FILTERSTERN-SCHLITZROHR D. 1200  |              |       |
| 8   | * SP-04-0451 | GRUPPE AUSGANG D. 75         | 11    | * SP-04-0462 | SET FILTERSTERN-SCHLITZROHR D. 1400  |              |       |
| 8   | * SP-04-0315 | SET AUSGANG D. 90 - 3"       | 11    | * SP-04-0463 | SET FILTERSTERN-SCHLITZROHR D. 1600  |              |       |

\* SIEHE ANMERKUGSBLATT

CODE

**TID-1050063, TID-1050075, TID-1050090, TID-1200075, TID-1200090,  
 TID-1400075, TID-1400090, TID-1400110, TID-1600090, TID-1600110,  
 TID-1600125, TID-1800090, TID-1800110, TID-1800125, TID-1800140,  
 TID-2000110, TID-2000125, TID-2000140, TID-2000160**

BESCHREIBUNG: FILTER TEIDE INDUSTRIAL

|    |              |                                    |    |              |                                     |
|----|--------------|------------------------------------|----|--------------|-------------------------------------|
| 8  | * SP-04-0452 | GRUPPE AUSGANG D. 110 VOLCANO      | 11 | * SP-04-0464 | SET FILTERSTERN-SCHLITZROHR D. 1800 |
| 8  | * SP-04-0453 | GRUPPE AUSGANG D. 125 VOLCANO      | 11 | * SP-04-0465 | SET FILTERSTERN-SCHLITZROHR D. 2000 |
| 8  | * SP-04-0454 | GRUPPE AUSGANG D. 140 VOLCANO      | 12 | * SP-04-0147 | FILTERSTERN-SCHLITZROHR 1" 225 M "  |
| 8  | * SP-04-0455 | GRUPPE AUSGANG D. 160 VOLCANO      | 12 | * SP-04-0150 | FILTERSTERN-SCHLITZROHR 1" 265 M "  |
| 9  | SP-04-0439   | SANDAUSLASS - ABLASS               | 13 | * SP-04-0146 | NIPPEL ANSCHLUSSVERBINDUNG 1"       |
| 14 | * SP-04-0145 | FILTERSTERN-SCHLITZROHR 1" 100 M " | 16 | * SP-04-0485 | SET WASSERVERTEILER D. 63 - 1050    |
| 15 | * SP-04-0466 | SAMMELROHRSET D. 63 - 1050         | 16 | * SP-04-0486 | SET WASSERVERTEILER D. 75 - 1050    |
| 15 | * SP-04-0467 | SAMMELROHRSET D. 75 - 1050         | 16 | * SP-04-0487 | SET WASSERVERTEILER D. 90 - 1050    |
| 15 | * SP-04-0468 | SAMMELROHRSET D. 90 - 1050         | 16 | * SP-04-0488 | SET WASSERVERTEILER D. 75 - 1200    |
| 15 | * SP-04-0469 | SAMMELROHRSET D. 75 - 1200         | 16 | * SP-04-0489 | SET WASSERVERTEILER D. 90 - 1200    |
| 15 | * SP-04-0470 | SAMMELROHRSET D. 90 - 1200         | 16 | * SP-04-0490 | SET WASSERVERTEILER D. 75 - 1400    |
| 15 | * SP-04-0471 | SAMMELROHRSET D. 75 - 1400         | 16 | * SP-04-0491 | SET WASSERVERTEILER D. 90 - 1400    |
| 15 | * SP-04-0472 | SAMMELROHRSET D. 90 - 1400         | 16 | * SP-04-0492 | SET WASSERVERTEILER D. 110 - 1400   |
| 15 | * SP-04-0473 | SAMMELROHRSET D. 110 - 1400        | 16 | * SP-04-0493 | SET WASSERVERTEILER D. 90 - 1600    |
| 15 | * SP-04-0474 | SAMMELROHRSET D. 90 - 1600         | 16 | * SP-04-0494 | SET WASSERVERTEILER D. 110 - 1600   |
| 15 | * SP-04-0475 | SAMMELROHRSET D. 110 - 1600        | 16 | * SP-04-0495 | SET WASSERVERTEILER D. 125 - 1600   |
| 15 | * SP-04-0476 | SAMMELROHRSET D. 125 - 1600        | 16 | * SP-04-0496 | SET WASSERVERTEILER MIT HALTERUNG   |
| 15 | * SP-04-0477 | SAMMELROHRSET MIT HALTERUNG D. 90  | 16 | * SP-04-0497 | SET WASSERVERTEILER MIT HALTERUNG   |
| 15 | * SP-04-0478 | SAMMELROHRSET MIT HALTERUNG D. 110 | 16 | * SP-04-0498 | SET WASSERVERTEILER MIT HALTERUNG   |
| 15 | * SP-04-0479 | SAMMELROHRSET MIT HALTERUNG D. 125 | 16 | * SP-04-0499 | SET WASSERVERTEILER MIT HALTERUNG   |
| 15 | * SP-04-0480 | SAMMELROHRSET MIT HALTERUNG D. 140 | 16 | * SP-04-0500 | SET WASSERVERTEILER MIT HALTERUNG   |
| 15 | * SP-04-0481 | SAMMELROHRSET MIT HALTERUNG D. 110 | 16 | * SP-04-0501 | SET WASSERVERTEILER MIT HALTERUNG   |
| 15 | * SP-04-0482 | SAMMELROHRSET MIT HALTERUNG D. 125 | 16 | * SP-04-0502 | SET WASSERVERTEILER MIT HALTERUNG   |
| 15 | * SP-04-0483 | SAMMELROHRSET MIT HALTERUNG D. 140 | 16 | * SP-04-0503 | SET WASSERVERTEILER MIT HALTERUNG   |
| 15 | * SP-04-0484 | SAMMELROHRSET MIT HALTERUNG D. 160 |    |              |                                     |

**CODE**                    **TID-1050063, TID-1050075, TID-1050090, TID-1200075, TID-1200090,**  
**TID-1400075, TID-1400090, TID-1400110, TID-1600090, TID-1600110,**  
**TID-1600125, TID-1800090, TID-1800110, TID-1800125, TID-1800140,**  
**TID-2000110, TID-2000125, TID-2000140, TID-2000160**

**BESCHREIBUNG: FILTER TEIDE INDUSTRIAL**

## HINWEISE

| POS | CODE         | HINWEISE   |
|-----|--------------|--|
| 8   | * SP-04-0450 | FÜR: TID-1050063   |
| 8   | * SP-04-0451 | FÜR: TID-1050075, TID-1200075, TID-1400075   |
| 8   | * SP-04-0315 | FÜR: TID-1050090, TID-1200090, TID-1400090, TID-1600090, TID-1800090   |
| 8   | * SP-04-0452 | FÜR: TID-1400110, TID-1600110, TID-1800110, TID-2000110  |
| 8   | * SP-04-0453 | FÜR: TID-1600125, TID-1800125, TID-2000125   |
| 8   | * SP-04-0454 | FÜR: TID-1800140, TID-2000140  |
| 8   | * SP-04-0455 | FÜR: TID-2000160   |
| 10  | * SP-04-0456 | FÜR: TID-1050063, TID-1050075, TID-1050090   |
| 10  | * SP-04-0457 | FÜR: TID-1200075, TID-1200090  |
| 10  | * SP-04-0458 | FÜR: TID-1400075, TID-1400090, TID-1400110   |
| 10  | * SP-04-0459 | FÜR: TID-1600090, TID-1600110, TID-1600125   |
| 10  | * SP-04-0460 | FÜR: TID-1800090, TID-1800110, TID-1800125, TID-1800140  |
| 10  | * SP-04-0461 | FÜR: TID-2000110, TID-2000125, TID-2000140, TID-2000160  |
| 11  | * SP-04-0155 | FÜR: TID-1050063, TID-1050075, TID-1050090   |
| 11  | * SP-04-0316 | FÜR: TID-1200075, TID-1200090  |
| 11  | * SP-04-0462 | FÜR: TID-1400075, TID-1400090, TID-1400110   |
| 11  | * SP-04-0463 | FÜR: TID-1600090, TID-1600110, TID-1600125   |
| 11  | * SP-04-0464 | FÜR: TID-1800090, TID-1800110, TID-1800125, TID-1800140  |
| 11  | * SP-04-0465 | FÜR: TID-2000110, TID-2000125, TID-2000140, TID-2000160  |
| 12  | * SP-04-0147 | FÜR: TID-1050063 [6UT], TID-1050075 [6UT], TID-1050090 [6UT], TID-1400075 [6UT], TID-1400090 [6UT], TID-1400110 [6UT], TID-1800090 [6UT], TID-1800110 [6UT], TID-1800125 [6UT], TID-1800140 [6UT], TID-2000110 [9UT], TID-2000125 [9UT], TID-2000140 [9UT], TID-2000160 [9UT]  |
| 12  | * SP-04-0150 | FÜR: TID-1200075 [6UT], TID-1200090 [6UT], TID-1600090 [6UT], TID-1600110 [6UT], TID-1600125 [6UT], TID-1800090 [7UT], TID-1800110 [7UT], TID-1800125 [7UT], TID-1800140 [7UT], TID-2000110 [4UT], TID-2000125 [4UT], TID-2000140 [4UT], TID-2000160 [4UT]   |
| 13  | * SP-04-0146 | FÜR: TID-1050063 [3UT], TID-1050075 [3UT], TID-1050090 [3UT], TID-1200075 [3UT], TID-1200090 [3UT], TID-1400075 [6UT], TID-1400090 [6UT], TID-1400110 [6UT], TID-1600090 [6UT], TID-1600110 [6UT], TID-1600125 [6UT], TID-1800090 [11UT], TID-1800110 [11UT], TID-1800125 [11UT], TID-1800140 [11UT], TID-2000110 [20UT], TID-2000125 [20UT], TID-2000140 [20UT], TID-2000160 [20UT] |
| 14  | * SP-04-0145 | FÜR: TID-1050063 [3UT], TID-1050075 [3UT], TID-1050090 [3UT], TID-1200075 [3UT], TID-1200090 [3UT], TID-1400075 [6UT], TID-1400090 [6UT], TID-1400110 [6UT], TID-1600090 [6UT], TID-1600110 [6UT], TID-1600125 [6UT], TID-1800090 [11UT], TID-1800110 [11UT], TID-1800125 [11UT], TID-1800140 [11UT], TID-2000110 [20UT], TID-2000125 [20UT], TID-2000140 [20UT], TID-2000160 [20UT] |
| 15  | * SP-04-0466 | FÜR: TID-1050063   |
| 15  | * SP-04-0467 | FÜR: TID-1050075   |
| 15  | * SP-04-0468 | FÜR: TID-1050090   |
| 15  | * SP-04-0469 | FÜR: TID-1200075   |
| 15  | * SP-04-0470 | FÜR: TID-1200090   |
| 15  | * SP-04-0471 | FÜR: TID-1400075   |
| 15  | * SP-04-0472 | FÜR: TID-1400090   |
| 15  | * SP-04-0473 | FÜR: TID-1400110   |
| 15  | * SP-04-0474 | FÜR: TID-1600090   |
| 15  | * SP-04-0475 | FÜR: TID-1600110   |
| 15  | * SP-04-0476 | FÜR: TID-1600125   |
| 15  | * SP-04-0477 | FÜR: TID-1800090   |



# EINZELTEILE

ÜBER.: 0

9165

DATUM: 09/06/2022

BLATT: 4/4

CODE

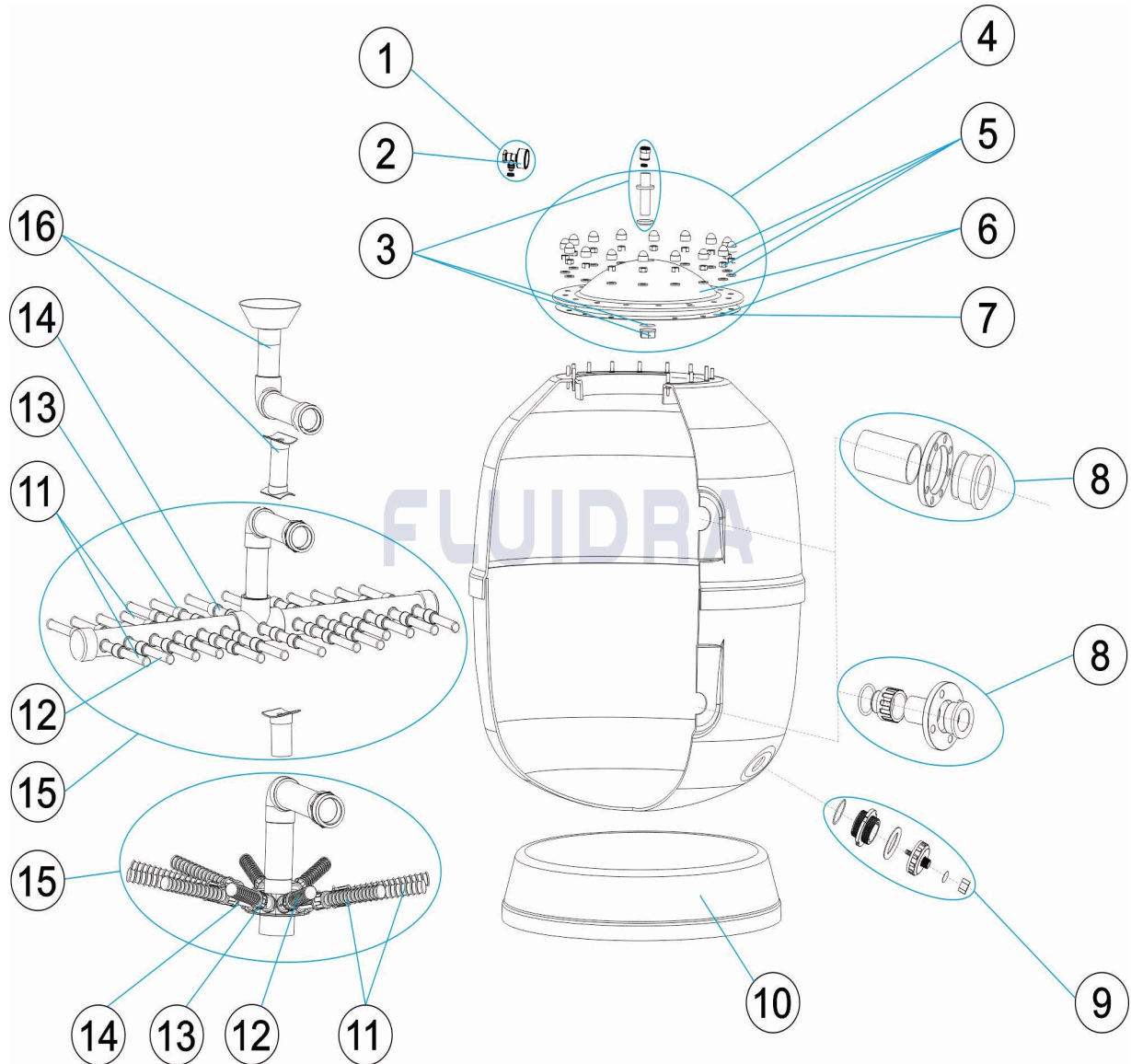
TID-1050063, TID-1050075, TID-1050090, TID-1200075, TID-1200090,  
TID-1400075, TID-1400090, TID-1400110, TID-1600090, TID-1600110,  
TID-1600125, TID-1800090, TID-1800110, TID-1800125, TID-1800140,  
TID-2000110, TID-2000125, TID-2000140, TID-2000160

BESCHREIBUNG: FILTER TEIDE INDUSTRIAL

|    |              |                  |
|----|--------------|------------------|
| 15 | * SP-04-0478 | FÜR: TID-1800110 |
| 15 | * SP-04-0479 | FÜR: TID-1800125 |
| 15 | * SP-04-0480 | FÜR: TID-1800140 |
| 15 | * SP-04-0481 | FÜR: TID-2000110 |
| 15 | * SP-04-0482 | FÜR: TID-2000125 |
| 15 | * SP-04-0483 | FÜR: TID-2000140 |
| 15 | * SP-04-0484 | FÜR: TID-2000160 |
| 16 | * SP-04-0485 | FÜR: TID-1050063 |
| 16 | * SP-04-0486 | FÜR: TID-1050075 |
| 16 | * SP-04-0487 | FÜR: TID-1050090 |
| 16 | * SP-04-0488 | FÜR: TID-1200075 |
| 16 | * SP-04-0489 | FÜR: TID-1200090 |
| 16 | * SP-04-0490 | FÜR: TID-1400075 |
| 16 | * SP-04-0491 | FÜR: TID-1400090 |
| 16 | * SP-04-0492 | FÜR: TID-1400110 |
| 16 | * SP-04-0493 | FÜR: TID-1600090 |
| 16 | * SP-04-0494 | FÜR: TID-1600110 |
| 16 | * SP-04-0495 | FÜR: TID-1600125 |
| 16 | * SP-04-0496 | FÜR: TID-1800090 |
| 16 | * SP-04-0497 | FÜR: TID-1800110 |
| 16 | * SP-04-0498 | FÜR: TID-1800125 |
| 16 | * SP-04-0499 | FÜR: TID-1800140 |
| 16 | * SP-04-0500 | FÜR: TID-2000110 |
| 16 | * SP-04-0501 | FÜR: TID-2000125 |
| 16 | * SP-04-0502 | FÜR: TID-2000140 |
| 16 | * SP-04-0503 | FÜR: TID-2000160 |

**CODIGO** TID-1050063, TID-1050075, TID-1050090, TID-1200075, TID-1200090, TID-1400075, TID-1400090, TID-1400110, TID-1600090, TID-1600110, TID-1600125, TID-1800090, TID-1800110, TID-1800125, TID-1800140, TID-2000110, TID-2000125, TID-2000140, TID-2000160

**DESCRICAÇÃO:** FILTRO TEIDE INDUSTRIAL



**PORTUGUES**

| POS | CODIGO       | DESCRICAÇÃO                  | JANTIDADE | POS | CODIGO       | DESCRICAÇÃO                     | JANTIDADE |
|-----|--------------|------------------------------|-----------|-----|--------------|---------------------------------|-----------|
| 1   | SP-04-0071   | MANÓMETRO COMPLETO           |           | 10  | * SP-04-0456 | PÉ FILTRO D.1050                |           |
| 2   | SP-04-0072   | MANOMETRO 1/8" 3 KG./C "     |           | 10  | * SP-04-0457 | PÉ FILTRO D.1200                |           |
| 3   | SP-04-0300   | FIXAÇÃO MANOMETRO            |           | 10  | * SP-04-0458 | PÉ FILTRO D.1400                |           |
| 4   | SP-04-0302   | TAMPA FILTRO COMPLETO        |           | 10  | * SP-04-0459 | PÉ FILTRO D.1600                |           |
| 5   | SP-04-0303   | PARAFUSOS TAMPA FILTRO       |           | 10  | * SP-04-0460 | PÉ FILTRO D.1800                |           |
| 6   | SP-04-0304   | TAMPA FILTRO + JUNTA         |           | 10  | * SP-04-0461 | PÉ FILTRO D.2000                |           |
| 7   | SP-04-0305   | JUNTA TÓRICA TAMPA           |           | 11  | * SP-04-0155 | CJTO. BRAÇO COLECTOR D.950-1050 |           |
| 8   | * SP-04-0450 | RACORD DE SAÍDA D.63 VOLCANO |           | 11  | * SP-04-0316 | CJTO. BRAÇO COLECTOR D.1200     |           |
| 8   | * SP-04-0451 | RACORD DE SAÍDA D.75         |           | 11  | * SP-04-0462 | CJTO. BRAÇO COLECTOR D.1400     |           |
| 8   | * SP-04-0315 | CONJUNTO SAÍDA D. 90 - 3"    |           | 11  | * SP-04-0463 | CJTO. BRAÇO COLECTOR D.1600     |           |

**CODIGO**
**TID-1050063, TID-1050075, TID-1050090, TID-1200075, TID-1200090,  
TID-1400075, TID-1400090, TID-1400110, TID-1600090, TID-1600110,  
TID-1600125, TID-1800090, TID-1800110, TID-1800125, TID-1800140,  
TID-2000110, TID-2000125, TID-2000140, TID-2000160**
**DESCRICÃO: FILTRO TEIDE INDUSTRIAL**

|    |              |  |    |              |                                       |
|----|--------------|--|----|--------------|---------------------------------------|
| 8  | * SP-04-0452 | RACORD DE SAÍDA D.110 VOLCANO          | 11 | * SP-04-0464 | CJTO. BRAÇO COLECTOR D.1800           |
| 8  | * SP-04-0453 | RACORD DE SAÍDA D.125 VOLCANO          | 11 | * SP-04-0465 | CJTO. BRAÇO COLECTOR D.2000           |
| 8  | * SP-04-0454 | RACORD DE SAÍDA D.140 VOLCANO          | 12 | * SP-04-0147 | BRAÇO COLECTOR 1" 225 M "             |
| 8  | * SP-04-0455 | RACORD DE SAÍDA D.160 VOLCANO          | 12 | * SP-04-0150 | BRAÇO COLECTOR 1" 265 M/M "           |
| 9  | SP-04-0439   | DESCARREGA AREIA - ÁGUA                | 13 | * SP-04-0146 | RACCORD UNIÃO 1"                      |
| 14 | * SP-04-0145 | BRAÇO COLECTOR 1" 100M "               | 16 | * SP-04-0485 | CJTO. DIFUSOR D. 63 - 1050            |
| 15 | * SP-04-0466 | CONJ. COLECTOR D. 63 - 1050            | 16 | * SP-04-0486 | CJTO. DIFUSOR D. 75 - 1050            |
| 15 | * SP-04-0467 | CONJ. COLECTOR D. 75 - 1050            | 16 | * SP-04-0487 | CJTO. DIFUSOR D. 90 - 1050            |
| 15 | * SP-04-0468 | CONJ. COLECTOR D. 90 - 1050            | 16 | * SP-04-0488 | CJTO. DIFUSOR D. 75 - 1200            |
| 15 | * SP-04-0469 | CONJ. COLECTOR D. 75 - 1200            | 16 | * SP-04-0489 | CJTO. DIFUSOR D. 90 - 1200            |
| 15 | * SP-04-0470 | CONJ. COLECTOR D. 90 - 1200            | 16 | * SP-04-0490 | CJTO. DIFUSOR D. 75 - 1400            |
| 15 | * SP-04-0471 | CONJ. COLECTOR D. 75 - 1400            | 16 | * SP-04-0491 | CJTO. DIFUSOR D. 90 - 1400            |
| 15 | * SP-04-0472 | CONJ. COLECTOR D. 90 - 1400            | 16 | * SP-04-0492 | CJTO. DIFUSOR D. 110 - 1400           |
| 15 | * SP-04-0473 | CONJ. COLECTOR D. 110 - 1400           | 16 | * SP-04-0493 | CJTO. DIFUSOR D. 90 - 1600            |
| 15 | * SP-04-0474 | CONJ. COLECTOR D. 90 - 1600            | 16 | * SP-04-0494 | CJTO. DIFUSOR D. 110 - 1600           |
| 15 | * SP-04-0475 | CONJ. COLECTOR D. 110 - 1600           | 16 | * SP-04-0495 | CJTO. DIFUSOR D. 125 - 1600           |
| 15 | * SP-04-0476 | CONJ. COLECTOR D. 125 - 1600           | 16 | * SP-04-0496 | CJTO. DIFUSOR + SUPORTE D. 90 - 1800  |
| 15 | * SP-04-0477 | CONJ. COLECTOR + SUPORTE D. 90 - 1800  | 16 | * SP-04-0497 | CJTO. DIFUSOR + SUPORTE D. 110 - 1800 |
| 15 | * SP-04-0478 | CONJ. COLECTOR + SUPORTE D. 110 - 1800 | 16 | * SP-04-0498 | CJTO. DIFUSOR + SUPORTE D. 125 - 1800 |
| 15 | * SP-04-0479 | CONJ. COLECTOR + SUPORTE D. 125 - 1800 | 16 | * SP-04-0499 | CJTO. DIFUSOR + SUPORTE D. 140 - 1800 |
| 15 | * SP-04-0480 | CONJ. COLECTOR + SUPORTE D. 140 - 1800 | 16 | * SP-04-0500 | CJTO. DIFUSOR + SUPORTE D. 110 - 2000 |
| 15 | * SP-04-0481 | CONJ. COLECTOR + SUPORTE D. 110 - 2000 | 16 | * SP-04-0501 | CJTO. DIFUSOR + SUPORTE D. 125 - 2000 |
| 15 | * SP-04-0482 | CONJ. COLECTOR + SUPORTE D. 125 - 2000 | 16 | * SP-04-0502 | CJTO. DIFUSOR + SUPORTE D. 140 - 2000 |
| 15 | * SP-04-0483 | CONJ. COLECTOR + SUPORTE D. 140 - 2000 | 16 | * SP-04-0503 | CJTO. DIFUSOR + SUPORTE D. 160 - 2000 |
| 15 | * SP-04-0484 | CONJ. COLECTOR + SUPORTE D. 160 - 2000 |    |              |                                       |

**CODIGO**                    **TID-1050063, TID-1050075, TID-1050090, TID-1200075, TID-1200090, TID-1400075, TID-1400090, TID-1400110, TID-1600090, TID-1600110, TID-1600125, TID-1800090, TID-1800110, TID-1800125, TID-1800140, TID-2000110, TID-2000125, TID-2000140, TID-2000160**

**DESCRICAÇÃO: FILTRO TEIDE INDUSTRIAL**

## OBSERVAÇÕES

| POS | CODIGO       | OBSERVAÇÕES   |
|-----|--------------|---|
| 8   | * SP-04-0450 | PARA: TID-1050063   |
| 8   | * SP-04-0451 | PARA: TID-1050075, TID-1200075, TID-1400075   |
| 8   | * SP-04-0315 | PARA: TID-1050090, TID-1200090, TID-1400090, TID-1600090, TID-1800090   |
| 8   | * SP-04-0452 | PARA: TID-1400110, TID-1600110, TID-1800110, TID-2000110  |
| 8   | * SP-04-0453 | PARA: TID-1600125, TID-1800125, TID-2000125   |
| 8   | * SP-04-0454 | PARA: TID-1800140, TID-2000140  |
| 8   | * SP-04-0455 | PARA: TID-2000160   |
| 10  | * SP-04-0456 | PARA: TID-1050063, TID-1050075, TID-1050090   |
| 10  | * SP-04-0457 | PARA: TID-1200075, TID-1200090  |
| 10  | * SP-04-0458 | PARA: TID-1400075, TID-1400090, TID-1400110   |
| 10  | * SP-04-0459 | PARA: TID-1600090, TID-1600110, TID-1600125   |
| 10  | * SP-04-0460 | PARA: TID-1800090, TID-1800110, TID-1800125, TID-1800140  |
| 10  | * SP-04-0461 | PARA: TID-2000110, TID-2000125, TID-2000140, TID-2000160  |
| 11  | * SP-04-0155 | PARA: TID-1050063, TID-1050075, TID-1050090   |
| 11  | * SP-04-0316 | PARA: TID-1200075, TID-1200090  |
| 11  | * SP-04-0462 | PARA: TID-1400075, TID-1400090, TID-1400110   |
| 11  | * SP-04-0463 | PARA: TID-1600090, TID-1600110, TID-1600125   |
| 11  | * SP-04-0464 | PARA: TID-1800090, TID-1800110, TID-1800125, TID-1800140  |
| 11  | * SP-04-0465 | PARA: TID-2000110, TID-2000125, TID-2000140, TID-2000160  |
| 12  | * SP-04-0147 | PARA: TID-1050063 [6UT], TID-1050075 [6UT], TID-1050090 [6UT], TID-1400075 [6UT], TID-1400090 [6UT], TID-1400110 [6UT], TID-1800090 [6UT], TID-1800110 [6UT], TID-1800125 [6UT], TID-1800140 [6UT], TID-2000110 [9UT], TID-2000125 [9UT], TID-2000140 [9UT], TID-2000160 [9UT]  |
| 12  | * SP-04-0150 | PARA: TID-1200075 [6UT], TID-1200090 [6UT], TID-1600090 [6UT], TID-1600110 [6UT], TID-1600125 [6UT], TID-1800090 [7UT], TID-1800110 [7UT], TID-1800125 [7UT], TID-1800140 [7UT], TID-2000110 [4UT], TID-2000125 [4UT], TID-2000140 [4UT], TID-2000160 [4UT]   |
| 13  | * SP-04-0146 | PARA: TID-1050063 [3UT], TID-1050075 [3UT], TID-1050090 [3UT], TID-1200075 [3UT], TID-1200090 [3UT], TID-1400075 [6UT], TID-1400090 [6UT], TID-1400110 [6UT], TID-1600090 [6UT], TID-1600110 [6UT], TID-1600125 [6UT], TID-1800090 [11UT], TID-1800110 [11UT], TID-1800125 [11UT], TID-1800140 [11UT], TID-2000110 [20UT], TID-2000125 [20UT], TID-2000140 [20UT], TID-2000160 [20UT] |
| 14  | * SP-04-0145 | PARA: TID-1050063 [3UT], TID-1050075 [3UT], TID-1050090 [3UT], TID-1200075 [3UT], TID-1200090 [3UT], TID-1400075 [6UT], TID-1400090 [6UT], TID-1400110 [6UT], TID-1600090 [6UT], TID-1600110 [6UT], TID-1600125 [6UT], TID-1800090 [11UT], TID-1800110 [11UT], TID-1800125 [11UT], TID-1800140 [11UT], TID-2000110 [20UT], TID-2000125 [20UT], TID-2000140 [20UT], TID-2000160 [20UT] |
| 15  | * SP-04-0466 | PARA: TID-1050063   |
| 15  | * SP-04-0467 | PARA: TID-1050075   |
| 15  | * SP-04-0468 | PARA: TID-1050090   |
| 15  | * SP-04-0469 | PARA: TID-1200075   |
| 15  | * SP-04-0470 | PARA: TID-1200090   |
| 15  | * SP-04-0471 | PARA: TID-1400075   |
| 15  | * SP-04-0472 | PARA: TID-1400090   |
| 15  | * SP-04-0473 | PARA: TID-1400110   |
| 15  | * SP-04-0474 | PARA: TID-1600090   |
| 15  | * SP-04-0475 | PARA: TID-1600110   |
| 15  | * SP-04-0476 | PARA: TID-1600125   |
| 15  | * SP-04-0477 | PARA: TID-1800090   |

**CODIGO**                    **TID-1050063, TID-1050075, TID-1050090, TID-1200075, TID-1200090,  
TID-1400075, TID-1400090, TID-1400110, TID-1600090, TID-1600110,  
TID-1600125, TID-1800090, TID-1800110, TID-1800125, TID-1800140,  
TID-2000110, TID-2000125, TID-2000140, TID-2000160**

**DESCRIÇÃO: FILTRO TEIDE INDUSTRIAL**

|    |              |                   |
|----|--------------|-------------------|
| 15 | * SP-04-0478 | PARA: TID-1800110 |
| 15 | * SP-04-0479 | PARA: TID-1800125 |
| 15 | * SP-04-0480 | PARA: TID-1800140 |
| 15 | * SP-04-0481 | PARA: TID-2000110 |
| 15 | * SP-04-0482 | PARA: TID-2000125 |
| 15 | * SP-04-0483 | PARA: TID-2000140 |
| 15 | * SP-04-0484 | PARA: TID-2000160 |
| 16 | * SP-04-0485 | PARA: TID-1050063 |
| 16 | * SP-04-0486 | PARA: TID-1050075 |
| 16 | * SP-04-0487 | PARA: TID-1050090 |
| 16 | * SP-04-0488 | PARA: TID-1200075 |
| 16 | * SP-04-0489 | PARA: TID-1200090 |
| 16 | * SP-04-0490 | PARA: TID-1400075 |
| 16 | * SP-04-0491 | PARA: TID-1400090 |
| 16 | * SP-04-0492 | PARA: TID-1400110 |
| 16 | * SP-04-0493 | PARA: TID-1600090 |
| 16 | * SP-04-0494 | PARA: TID-1600110 |
| 16 | * SP-04-0495 | PARA: TID-1600125 |
| 16 | * SP-04-0496 | PARA: TID-1800090 |
| 16 | * SP-04-0497 | PARA: TID-1800110 |
| 16 | * SP-04-0498 | PARA: TID-1800125 |
| 16 | * SP-04-0499 | PARA: TID-1800140 |
| 16 | * SP-04-0500 | PARA: TID-2000110 |
| 16 | * SP-04-0501 | PARA: TID-2000125 |
| 16 | * SP-04-0502 | PARA: TID-2000140 |
| 16 | * SP-04-0503 | PARA: TID-2000160 |