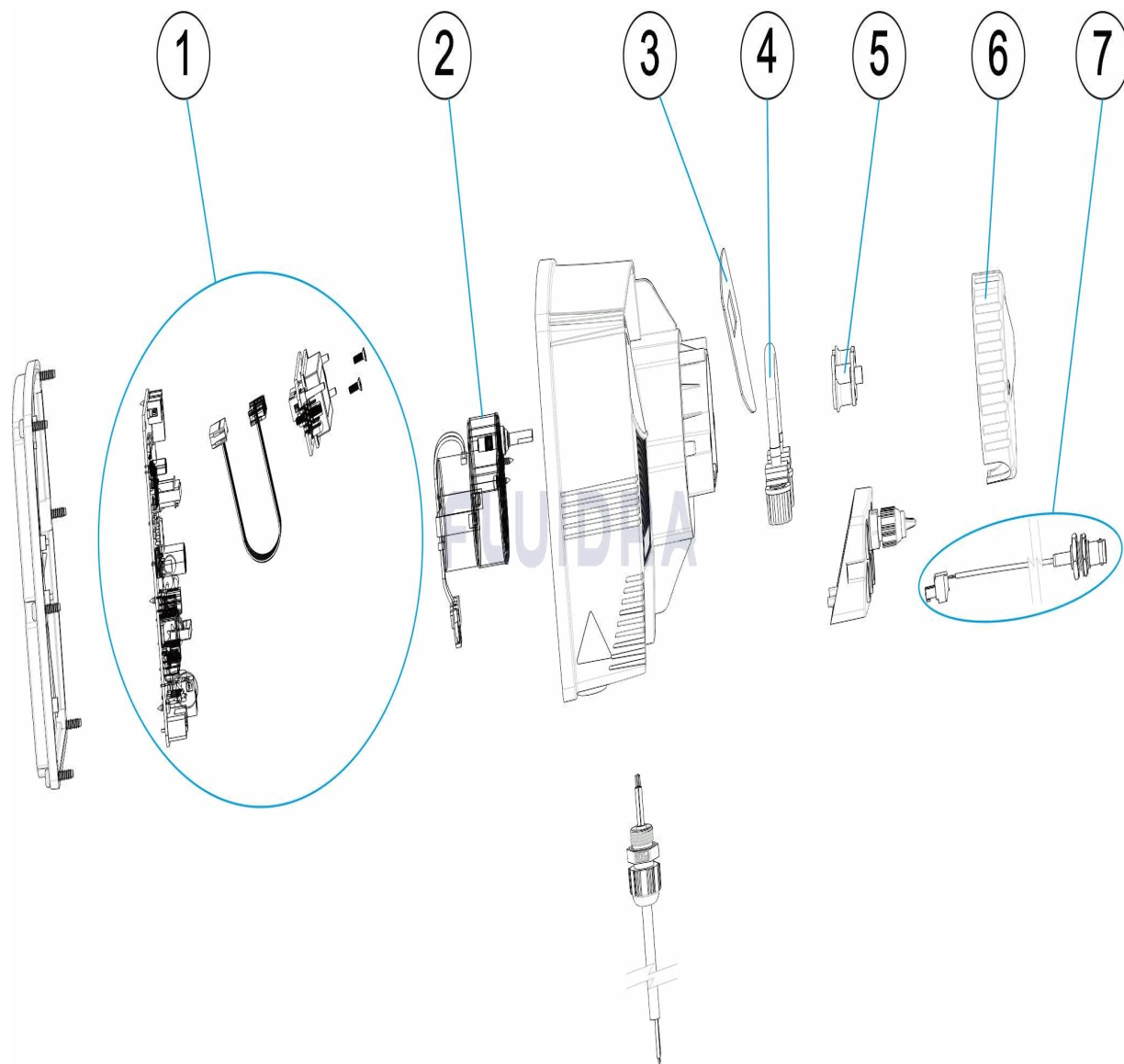


CODIGO **66156, 66157, 66162, 66163**

DESCRIPCION: **CONTROL BASIC NEXT 0,4 L/H - 1,5 L/H**



ESPAÑOL

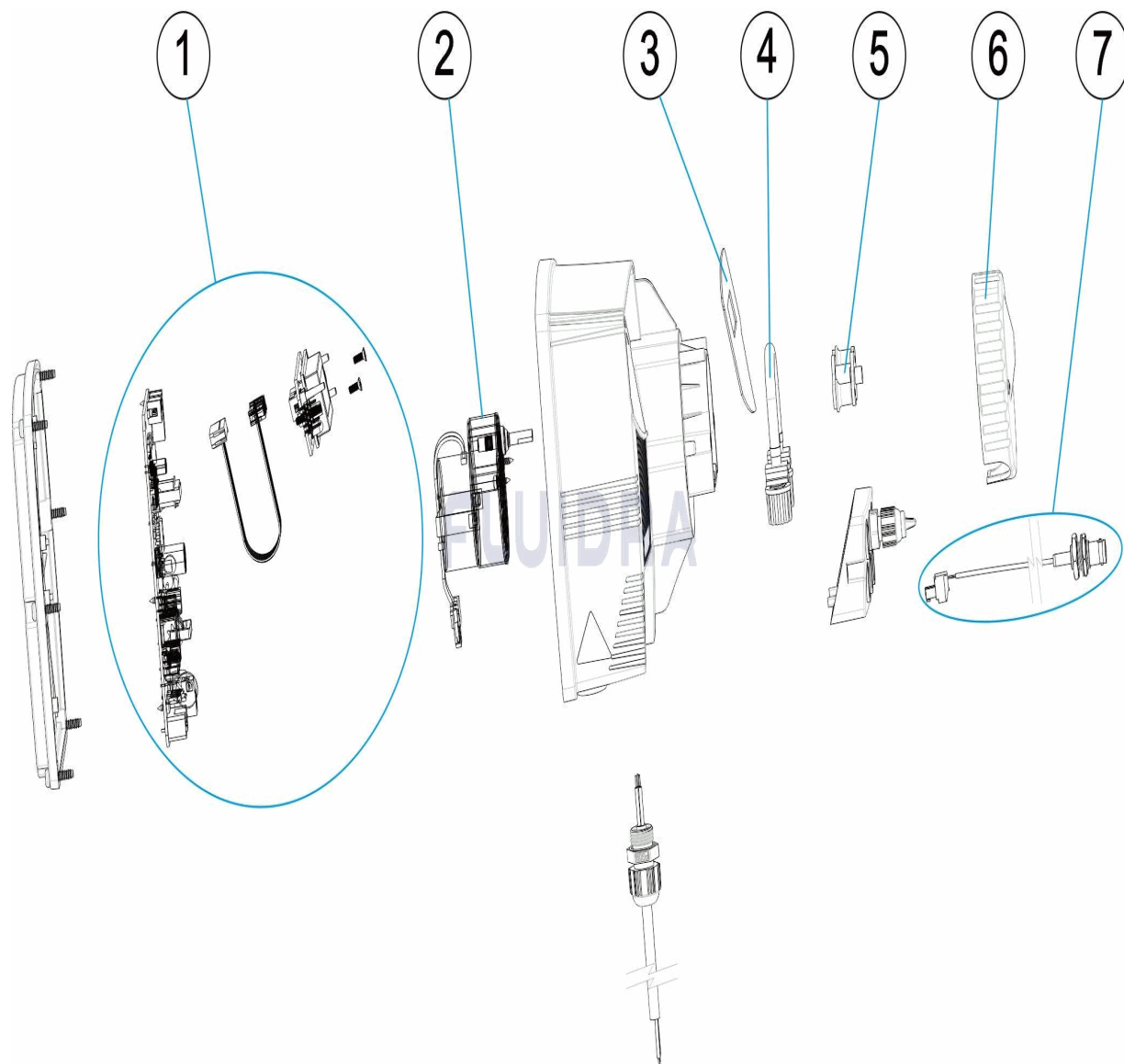
POS	CODIGO	DESCRIPCION	CANTIDAD	POS	CODIGO	DESCRIPCION	CANTIDAD
1	66162R0001	CIRCUITO ELECTRONICO		4	66162R0004	TUBO PERISTALTICO	
2	* 66156R0002	MOTOR BOMBA PERISTALTICA 0,4L/H		5	66162R0005	PORTA-RODILLOS	
2	* 66162R0002	MOTOR BOMBA PERISTALTICA 1,5L/H		6	66162R0006	TAPA FRONTAL	
3	66162R0010	TECLADO		7	66162R0007	CABLE COAXIAL RG174A/U 20CM	

CODIGO **66156, 66157, 66162, 66163**DESCRIPCION: **CONTROL BASIC NEXT 0,4 L/H - 1,5 L/H****OBSERVACIONES**

POS	CODIGO	OBSERVACIONES
2	* 66156R0002	PARA: 66156, 66157
2	* 66162R0002	PARA: 66162, 66163

CODE 66156, 66157, 66162, 66163

DESCRIPTION: CONTROL BASIC NEXT 0,4 L/H - 1,5 L/H



FRANCAIS

POS	CODE	DESCRIPTION	QUANTITE	POS	CODE	DESCRIPTION	QUANTITE
1	66162R0001	CIRCUIT ELECTRONIQUE		4	66162R0004	TUBE PÉRISTALTIQUE	
2	* 66156R0002	MOTEUR POMPE PÉRISTALTIQUE 0,4L/H		5	66162R0005	SUPPORT GALETS	
2	* 66162R0002	MOTEUR POMPE PÉRISTALTIQUE 1,5L/H		6	66162R0006	COUVERCLE FRONTAL	
3	66162R0010	CLAVIER		7	66162R0007	CABLE COAXIAL RG174A/U 20CM	

CODE **66156, 66157, 66162, 66163**

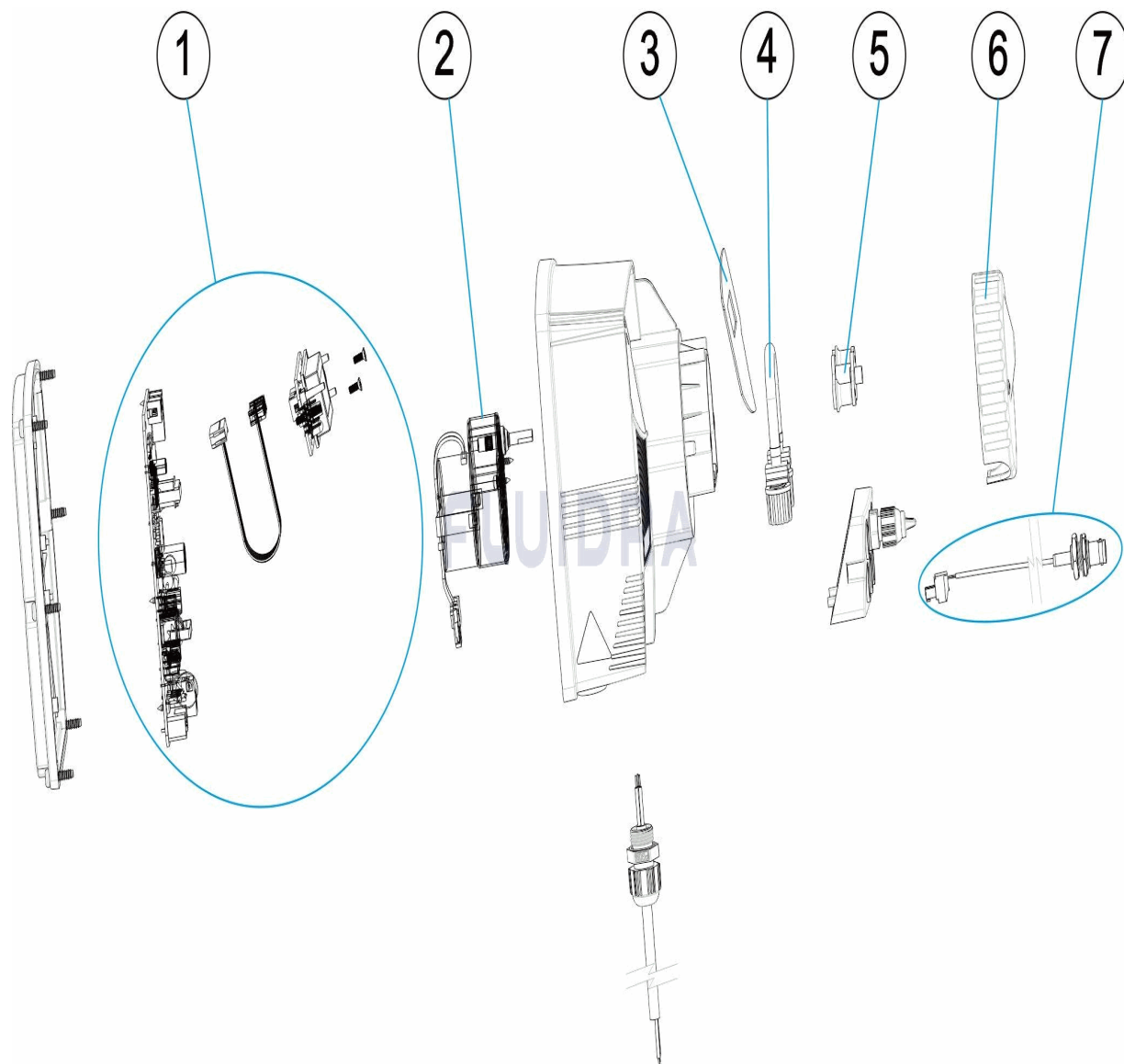
DESCRIPTION: **CONTROL BASIC NEXT 0,4 L/H - 1,5 L/H**

OBSERVATIONS

POS	CODE	OBSERVATIONS
2	* 66156R0002	POUR: 66156, 66157
2	* 66162R0002	POUR: 66162, 66163

CODE **66156, 66157, 66162, 66163**

DESCRIPTION: **CONTROL BASIC NEXT 0,4 L/H - 1,5 L/H**



ENGLISH

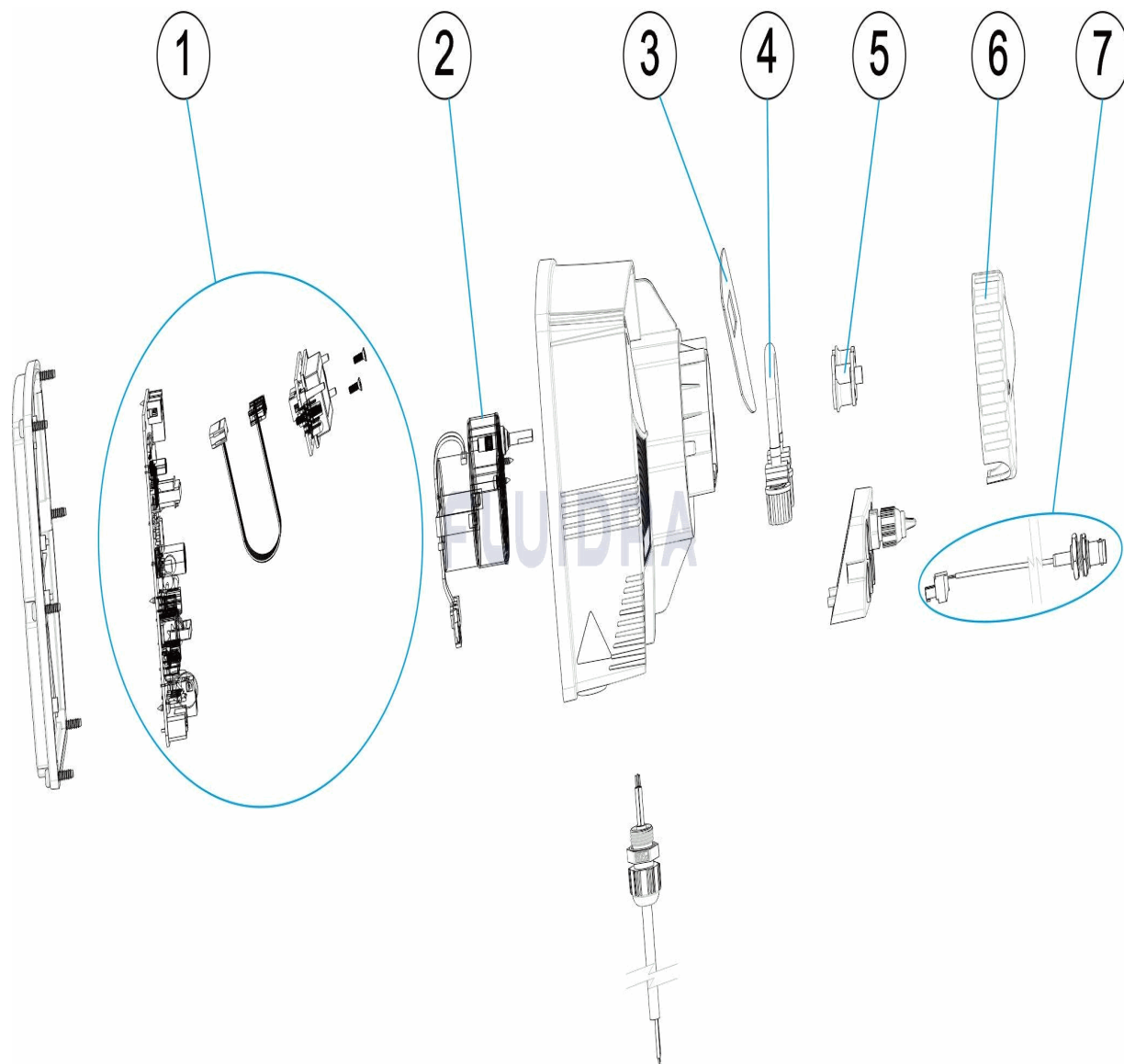
POS	CODE	DESCRIPTION	QUANTITY	POS	CODE	DESCRIPTION	QUANTITY
1	66162R0001	ELECTRONIC CIRCUIT		4	66162R0004	PERISTALTIC TUBE	
2	* 66156R0002	0,4L/H PERISTALTIC PUMP MOTOR		5	66162R0005	COMPLETE ROLLER HOLDER	
2	* 66162R0002	1,5L/H PERISTALTIC PUMP MOTOR		6	66162R0006	PERISTALTIC LID	
3	66162R0010	KEYBOARD		7	66162R0007	COAXIAL CABLE RG174A/U 20CM	

CODE **66156, 66157, 66162, 66163**DESCRIPTION: **CONTROL BASIC NEXT 0,4 L/H - 1,5 L/H****OBSERVATIONS**

POS	CODE	OBSERVATIONS
2	* 66156R0002	FOR: 66156, 66157
2	* 66162R0002	FOR: 66162, 66163

CODICE **66156, 66157, 66162, 66163**

DESCRIZIONE: **CONTROL BASIC NEXT 0,4 L/H - 1,5 L/H**



ITALIANO

POS	CODICE	DESCRIZIONE	QUANTITA'	POS	CODICE	DESCRIZIONE	QUANTITA'
1	66162R0001	CIRCUITO ELETTRONICO		4	66162R0004	TUBO PERISTALTICO	
2	* 66156R0002	MOTORE POMPA PERISTALTICA 0,4L/H		5	66162R0005	PORTA RULLO	
2	* 66162R0002	MOTORE POMPA PERISTALTICA 1,5L/H		6	66162R0006	COPERCHIO FRONTALE	
3	66162R0010	TASTIERA		7	66162R0007	CAVO COASSIALE RG174A/U 20CM	

CODICE **66156, 66157, 66162, 66163**

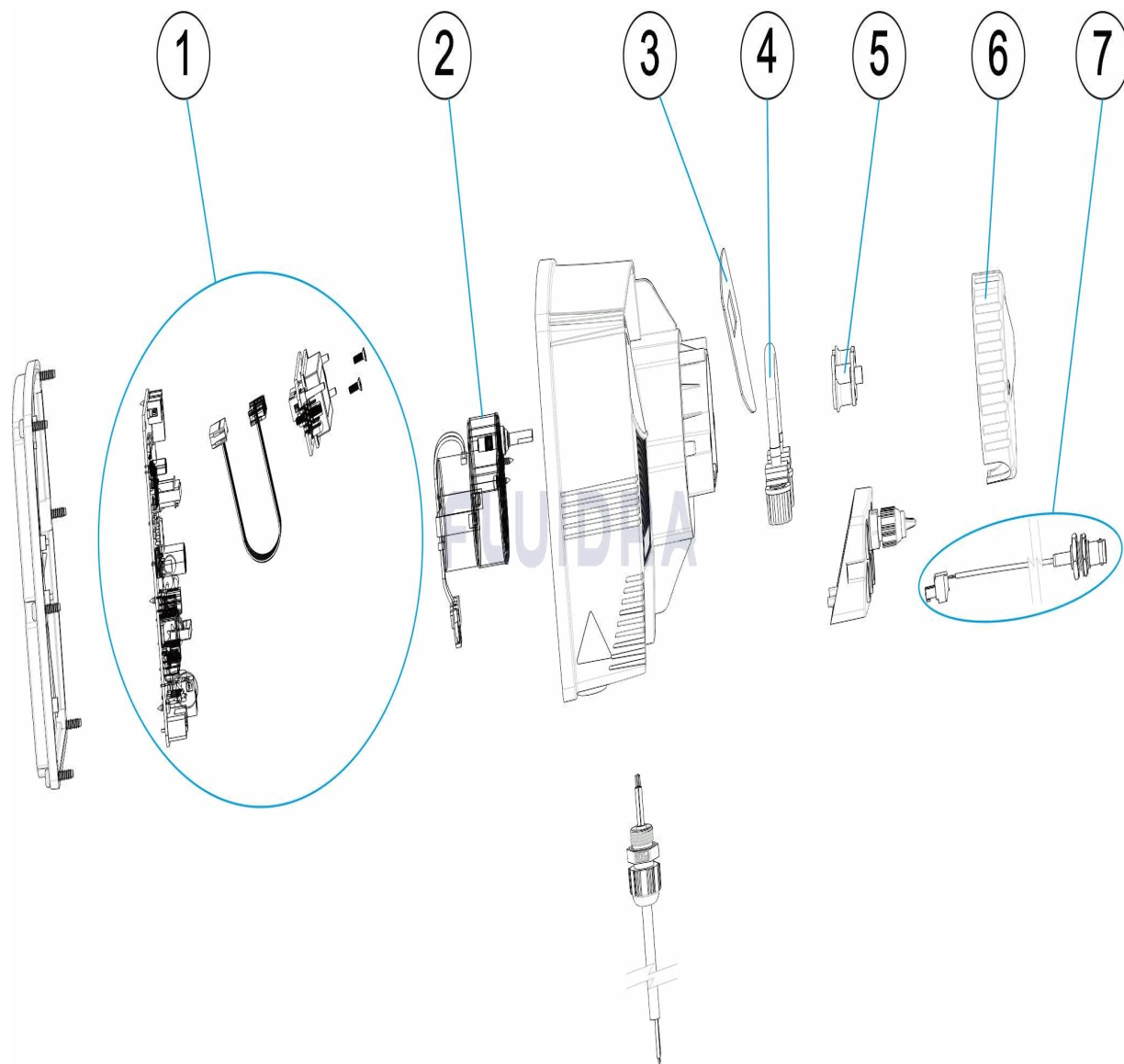
DESCRIZIONE: CONTROL BASIC NEXT 0,4 L/H - 1,5 L/H

OSSERVAZIONI

POS	CODICE	OSSERVAZIONI
2	* 66156R0002	PER: 66156, 66157
2	* 66162R0002	PER: 66162, 66163

CODE **66156, 66157, 66162, 66163**

BESCHREIBUNG: **STEUERUNG BASIC NEXT 0,4 L/H - 1,5 L/H**



DEUTSCH

POS	CODE	BESCHREIBUNG	MENGE	POS	CODE	BESCHREIBUNG	MENGE
1	66162R0001	PLATINE DOSIERPUMPE		4	66162R0004	PERISTALTIKSCHLAUCH	
2	* 66156R0002	MOTOR PERISTALTISCHE PUMPE 0,4L/H		5	66162R0005	ROLLENTÄGER	
2	* 66162R0002	MOTOR PERISTALTISCHE PUMPE 1,5L/H		6	66162R0006	FRONTALDECKEL	
3	66162R0010	TASTADUR		7	66162R0007	KOAXIALKABEL RG174A/U 20CM	

CODE **66156, 66157, 66162, 66163**

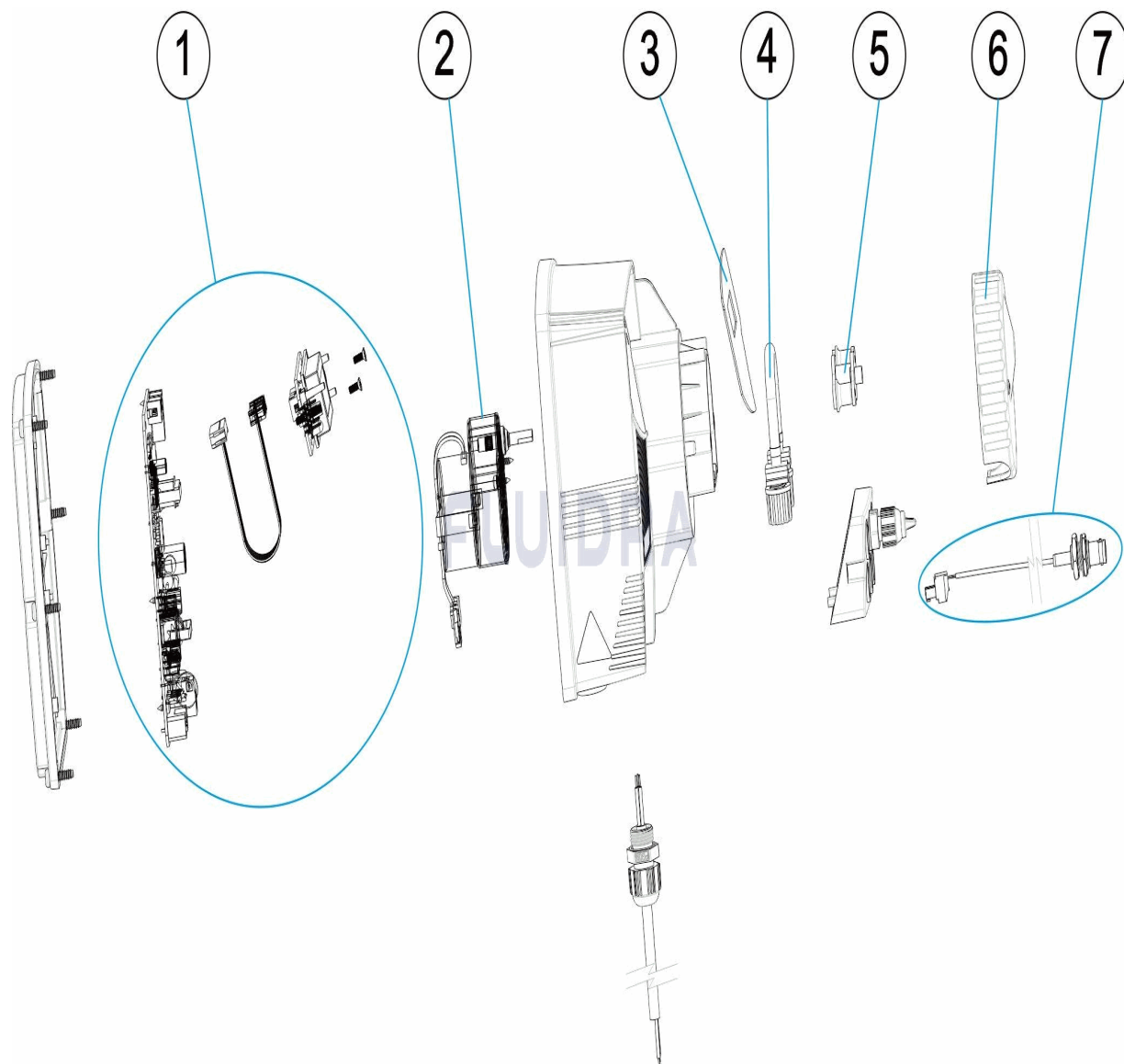
BESCHREIBUNG: **STEUERUNG BASIC NEXT 0,4 L/H - 1,5 L/H**

HINWEISE

POS	CODE	HINWEISE
2	* 66156R0002	FÜR: 66156, 66157
2	* 66162R0002	FÜR: 66162, 66163

CODIGO **66156, 66157, 66162, 66163**

DESCRICAÇÃO: **CONTROL BASIC NEXT 0,4 L/H - 1,5 L/H**



PORTUGUES

POS	CODIGO	DESCRICAÇÃO	JANTIDADE	POS	CODIGO	DESCRICAÇÃO	JANTIDADE
1	66162R0001	CIRCUITO ELECTRONICO		4	66162R0004	TUBO PERISTÁLTICO	
2	* 66156R0002	MOTOR BOMBA PERISTÁLTICA 0,4L/H		5	66162R0005	PORTA-RODÍZIOS	
2	* 66162R0002	MOTOR BOMBA PERISTÁLTICA 1,5L/H		6	66162R0006	TAMPA FRONTAL	
3	66162R0010	TECLADO		7	66162R0007	CABO COAXIAL RG174A/U 20CM	

CODIGO 66156, 66157, 66162, 66163

DESCRIÇÃO: CONTROL BASIC NEXT 0,4 L/H - 1,5 L/H

OBSERVAÇÕES

POS	CODIGO	OBSERVAÇÕES
2	* 66156R0002	PARA: 66156, 66157
2	* 66162R0002	PARA: 66162, 66163