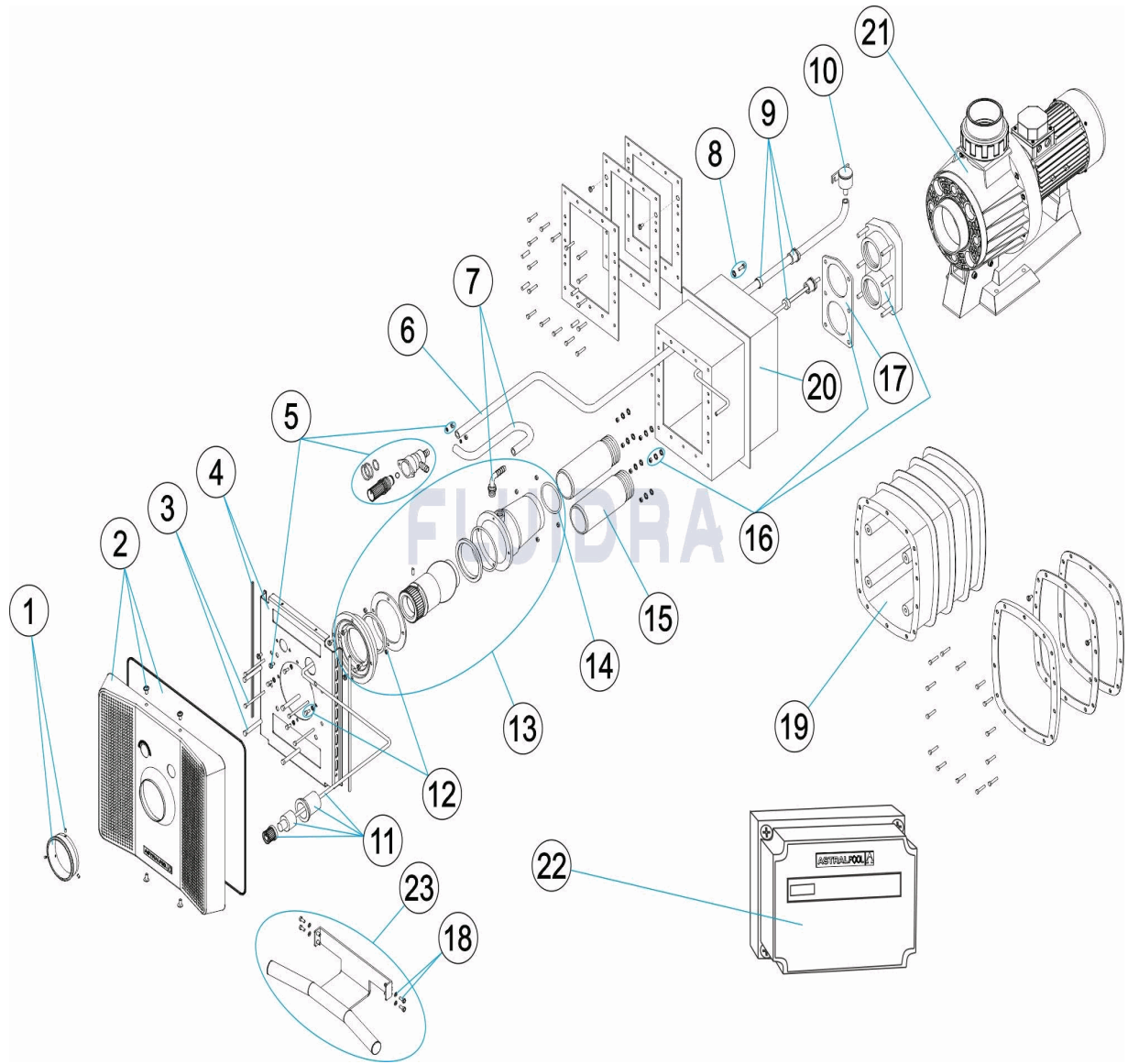


CODIGO **65489, 66470, 66471**

DESCRIPCION: **EQUIPO NATACIÓN CONTRACORRIENTE NL**



ESPAÑOL

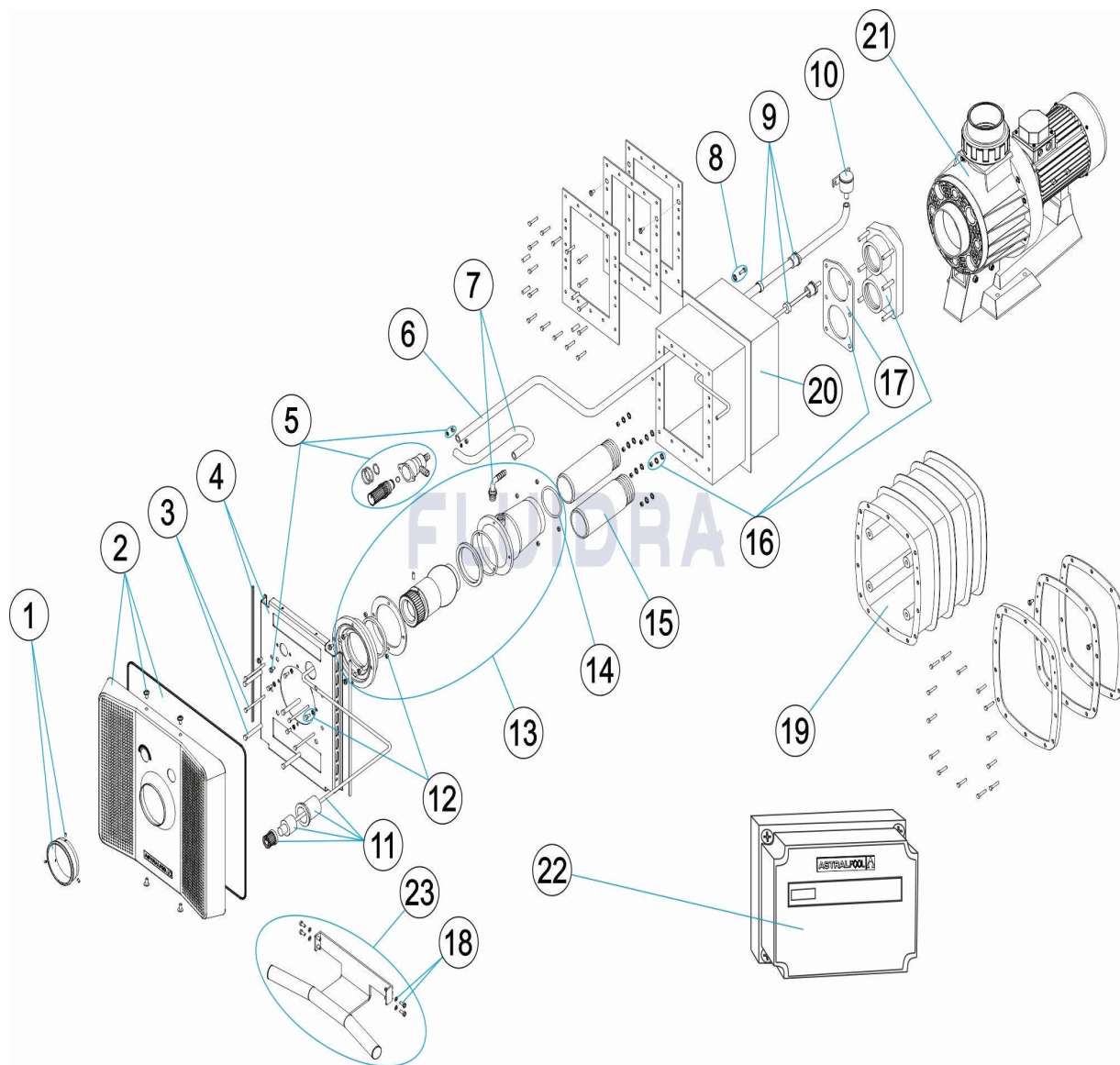
POS	CODIGO	DESCRIPCION	CANTIDAD	POS	CODIGO	DESCRIPCION	CANTIDAD
1	4402050063	ADAPTADOR CARATULA		12	4402050052	TORNILLERIA PLACA FIJACION	
2	4402050053	CARATULA		13	4402050055	BOQUILLA COMPLETA E.C.C.	
3	* 4402050050	TORNILLERIA PLACA FIJACION INOX.		14	4402050503	JUNTA TORICA 63X4	
3	* 4402050051	TORNILLERIA PLACA FIJACION PLASTICO		15	4402050118	TUBO ASPIRACION / IMPULSION	
4	4402050054	PLACA FIJACION INOX. Y PERFIL		16	4402050107	BRIDA CONEXIÓN CON JUNTA	
5	4402050057	VALVULA REGULACION		17	4402050108	JUNTA TAPA E.C.C.	
6	4401070015	CONDUCTO ASPIRACION 1,5 M.		18	4402050058	TORNILLERIA AGARRADERA	
7	4402050121	CONDUCTO ASPIRACION VENTURI L-300 l		19	11502	CAJA ALOJAMIENTO ECC PLÁSTICO	
8	4401090402	TOMA DE TIERRA		20	00243	CAJA ALOJAMIENTO ECC INOX	
9	4402050110	PRENSAESTOPAS E.C.C.		21	65549	BOMBA CONTRACORRIENTE	
10	4402050109	VALVULA ASPIRACION AIRE		22	65536	ARMARIO MANIOBRA PARA CONTRACORR	
11	4402050056	PULSADOR COMPLETO		23	65535	AGARRADERA + TORNILLOS	

CODIGO **65489, 66470, 66471**DESCRIPCION: **EQUIPO NATACIÓN CONTRACORRIENTE NL****OBSERVACIONES**

POS	CODIGO	OBSERVACIONES
3	* 4402050050	PARA: PLASTIC
3	* 4402050051	PARA: STAINLESS STEEL

CODE 65489, 66470, 66471

DESCRIPTION: ÉQUIPEMENT NAGE CONTRE-COURANT



FRANCAIS

POS	CODE	DESCRIPTION	QUANTITE	POS	CODE	DESCRIPTION	QUANTITE
1	4402050063	ADAPTATEUR FACADE		12	4402050052	VIS DE FIXATION	
2	4402050053	FACADE		13	4402050055	ENSEMBLE REFOULEMENT	
3	* 4402050050	VIS DE FIXATION INOX		14	4402050503	JOINT TORIQUE 63X4	
3	* 4402050051	VIS DE FIXATION		15	4402050118	MANCHETTE ASPIRATION / REFOULEMENT	
4	4402050054	PLAQUE DE FIXATION INOX ET PROFIL		16	4402050107	BRIDE DE CONNEXION AVEC JOINT	
5	4402050057	BOUTON DE REGLAGE D'AIR		17	4402050108	JOINT DE CONNEXION	
6	4401070015	CONDUIT ASPIRATION 1,5 M.		18	4402050058	VIS MAIN COURANTE	
7	4402050121	TUYAU D'ASPIRATION ET VENTURI L-300 N		19	11502	BLOC D'ENCASTREMENT ECC PLASTIQUE	
8	4401090402	PRISE DE TERRE		20	00243	PIECE A SCELLER ECC INOX	
9	4402050110	PRESSE ETOUPE		21	65549	POMPE CONTRE-COURANT	
10	4402050109	VALVE ASPIRATION D'AIR		22	65536	BOÎTIER DE COMMANDE POUR CONTRE-C	
11	4402050056	BOUTON POUSSOIR		23	65535	MAIN COURANTE + VIS	

CODE **65489, 66470, 66471**

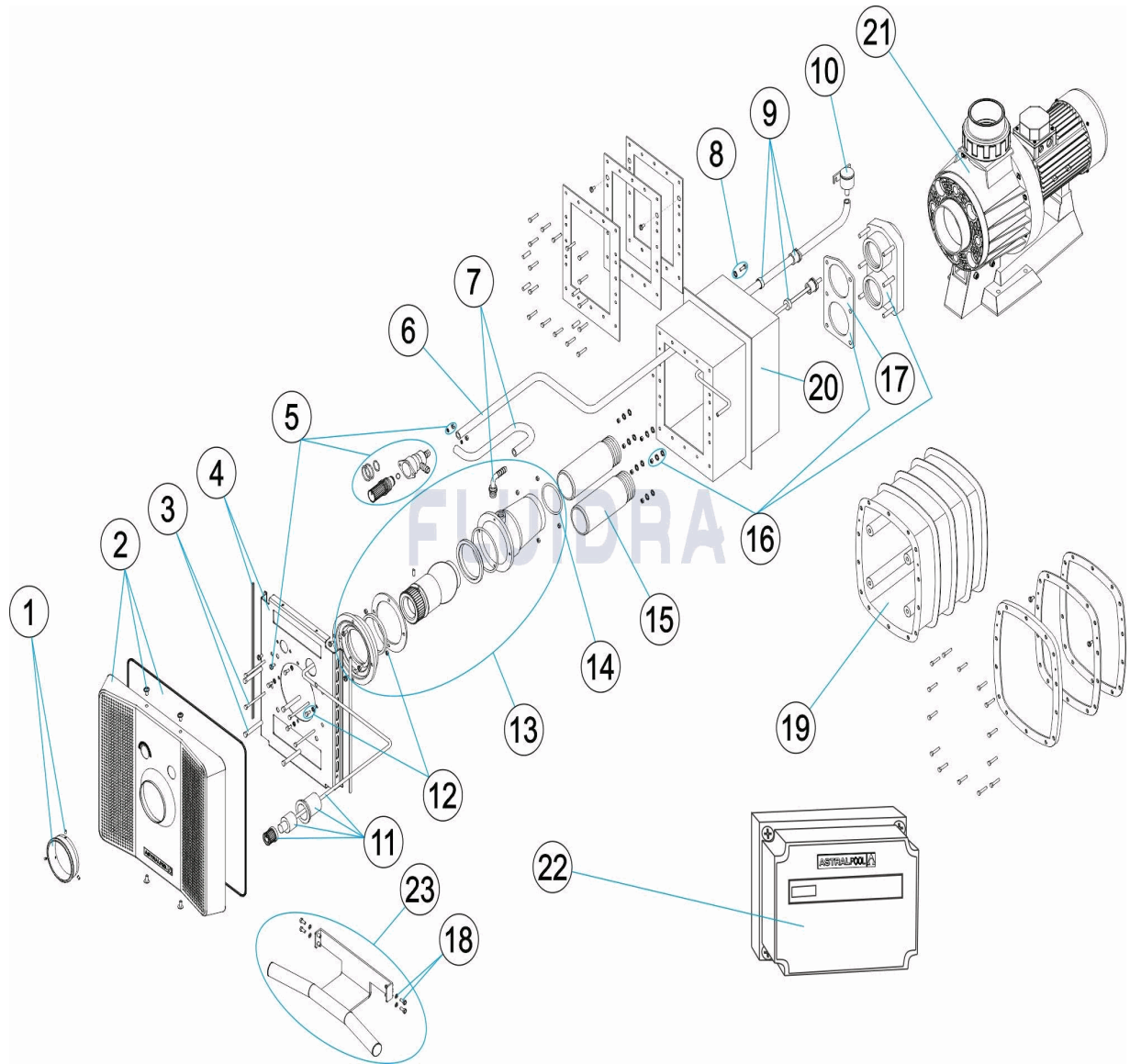
DESCRIPTION: **ÉQUIPEMENT NAGE CONTRE-COURANT**

OBSERVATIONS

POS	CODE	OBSERVATIONS
3	* 4402050050	POUR: PLASTIC
3	* 4402050051	POUR: STAINLESS STEEL

CODE **65489, 66470, 66471**

DESCRIPTION: **COUNTER-CURRENT SWIMMING EQUIPMENT**



ENGLISH

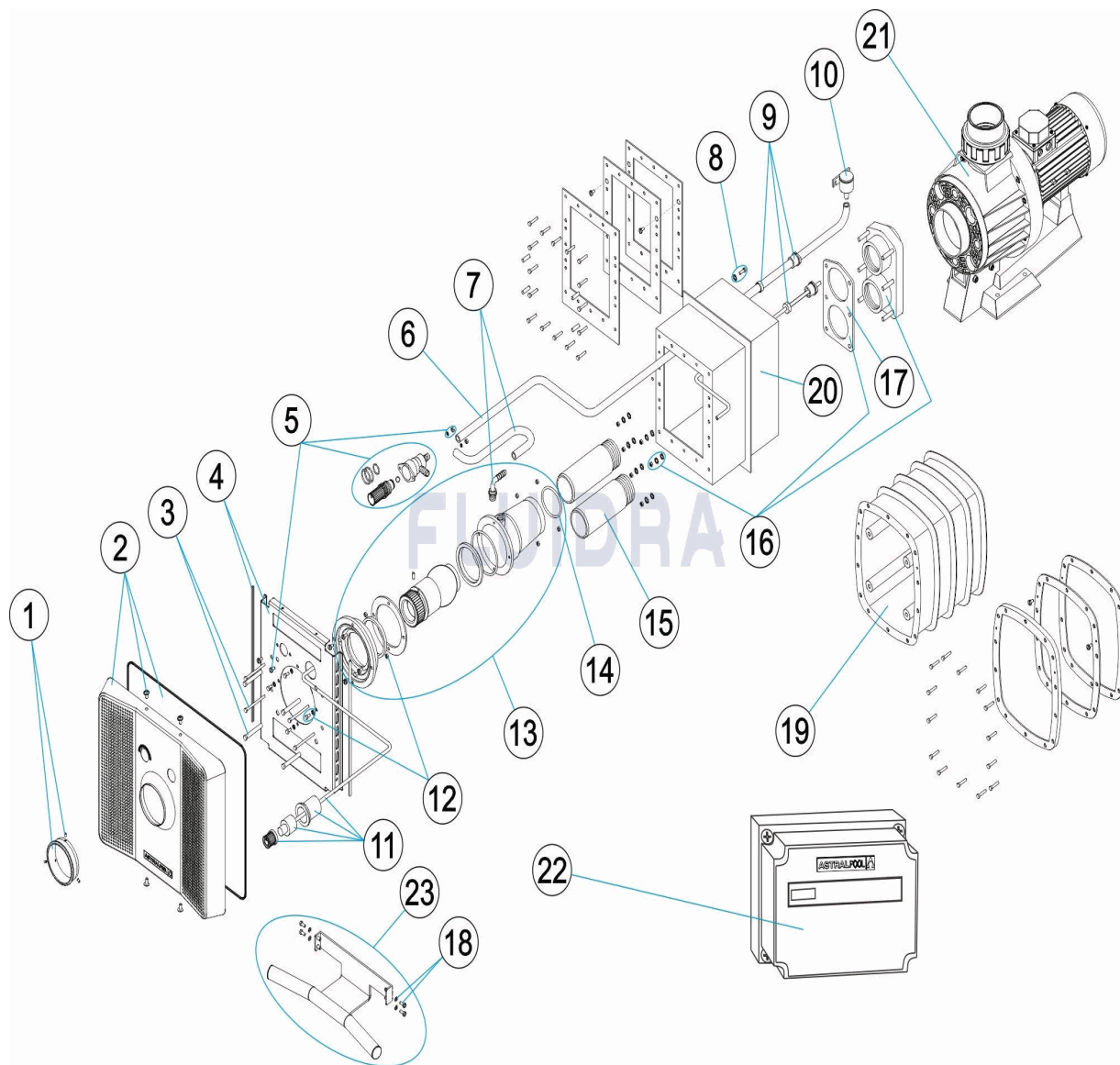
POS	CODE	DESCRIPTION	QUANTITY	POS	CODE	DESCRIPTION	QUANTITY
1	4402050063	FACEPLATE ADAPTER		12	4402050052	FIXING PLATE BOLTS	
2	4402050053	FACEPLATE		13	4402050055	CUU COMPLETE INLET	
3	* 4402050050	S.S. FIXING PLATE BOLTS		14	4402050503	63X4 JOINT	
3	* 4402050051	PLASTIC FIXING PLATE SCREWS		15	4402050118	SUCTION / RETURN TUBE	
4	4402050054	S.S. FIXING PLATE + SUPPORT PROFILE		16	4402050107	FLANGE CONNECTION WITH GASKET	
5	4402050057	CUU REGULATOR VALVE		17	4402050108	CCU GASKET COVER	
6	4401070015	SUCTION GUIDE 1,5 M.		18	4402050058	SCREW KIT FOR GRABPULL	
7	4402050121	VENTURI SUCTION CONDUIT L-300 M/M.		19	11502	PLASTIC HOUSING CASC	
8	4401090402	EARTH CONNECTION		20	00243	ECC S.S. HOUSING CASE	
9	4402050110	CCU CABLE GLAND		21	65549	COUNTER-CURRENT PUMP	
10	4402050109	AIR SUCTION VALVE		22	65536	CONTROL PANEL FOR COUNTERCURRENT	
11	4402050056	COMPLETE SWITCH		23	65535	GRABRAIL + SCREWS	

CODE **65489, 66470, 66471**DESCRIPTION: **COUNTER-CURRENT SWIMMING EQUIPMENT****OBSERVATIONS**

POS	CODE	OBSERVATIONS
3	* 4402050050	FOR: PLASTIC
3	* 4402050051	FOR: STAINLESS STEEL

CODICE 65489, 66470, 66471

DESCRIZIONE: ATTREZZATURA NUOTO CONTROCORRENTE



ITALIANO

POS	CODICE	DESCRIZIONE	QUANTITA'	POS	CODICE	DESCRIZIONE	QUANTITA'
1	4402050063	ADATTATORE MASCHERA		12	4402050052	BULLONERIA PER PIASTRA DI FISSAGGIO	
2	4402050053	MASCHERA		13	4402050055	BOCCHETTA COMPLETA N.C.C.	
3	* 4402050050	BULLONERIA PER PIASTRA DI FISSAGGIO		14	4402050503	O-RING 63X4	
3	* 4402050051	BULLONERIA PER PIASTRA DI FISSAGGIO		15	4402050118	TUBO DI ASPIRAZIONE / MANDATA	
4	4402050054	PIASTRA DI FISSAGGIO INOX E PROFILO		16	4402050107	FLANGIA FISSAGGIO CON GUARNIZIONE	
5	4402050057	VALVOLA DI REGOLAZIONE N.C.C.		17	4402050108	GUANIZIONE PER COPERCHIO N.C.C.	
6	4401070015	CONDOTTO ASPIRAZIONE 1,5 M.		18	4402050058	KIT VITI CORRIMANO	
7	4402050121	CONDOTTO DI ASPIRAZIONE VENTURI L-3		19	11502	CUSTODIA ALLOGGIAMENTO PLASTICA	
8	4401090402	PRESA A TERRA		20	00243	NICCHIA ALLOGGIAMENTO ECC INOX	
9	4402050110	PRESSACAVO N.C.C.		21	65549	POMPA CONTROCORRENTE	
10	4402050109	VALVOLA DI ASPIRAZIONE ARIA		22	65536	CASSETTA DI MANOVRA PER CONTROCOF	
11	4402050056	PULSANTE COMPLETO		23	65535	CORRIMANO + VITI	

CODICE **65489, 66470, 66471**

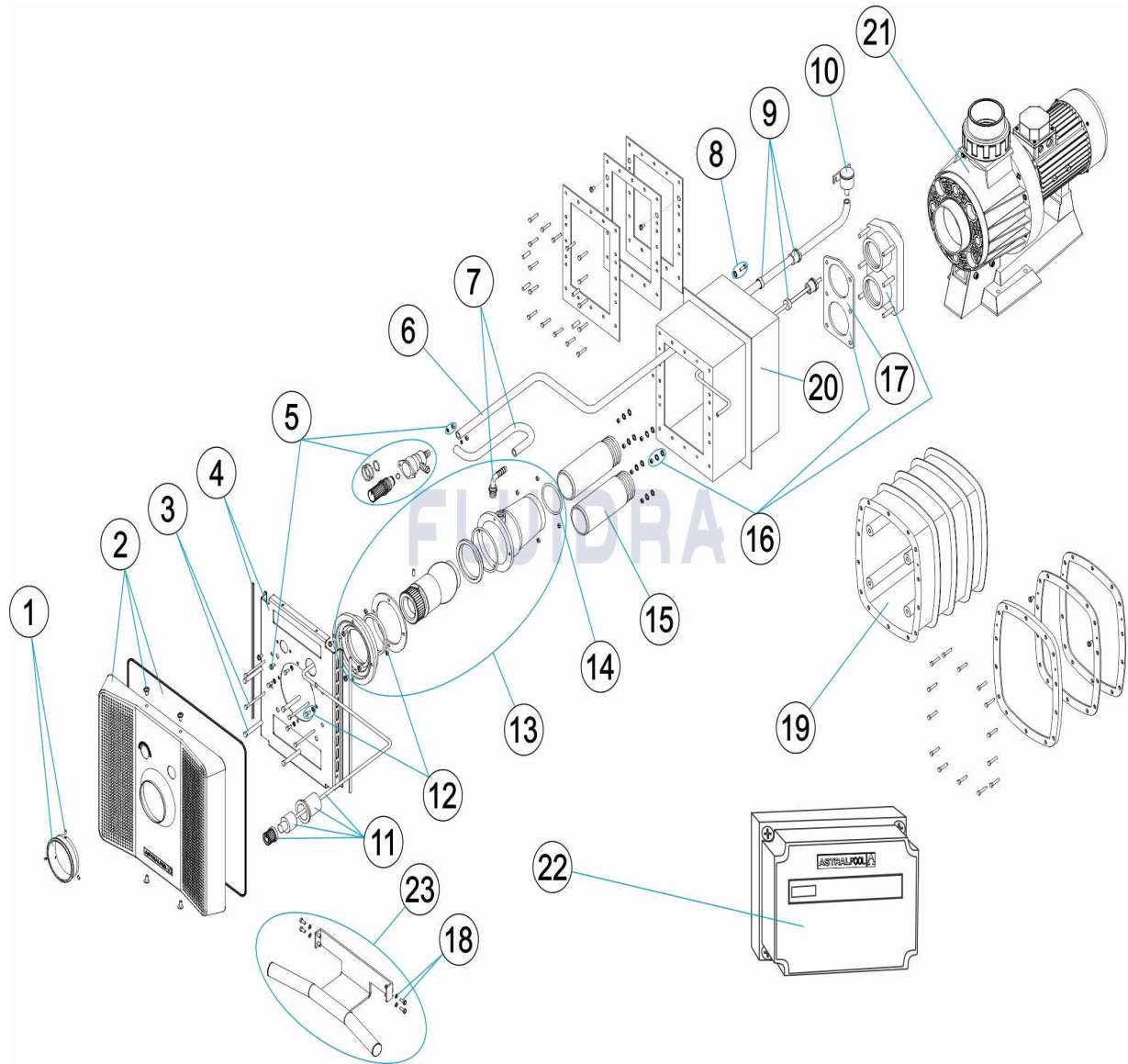
DESCRIZIONE: **ATTREZZATURA NUOTO CONTROCORRENTE**

OSSERVAZIONI

POS	CODICE	OSSERVAZIONI
3	* 4402050050	PER: PLASTIC
3	* 4402050051	PER: STAINLESS STEEL

CODE 65489, 66470, 66471

BESCHREIBUNG: GEGENSCHWIMMGERÄT



DEUTSCH

POS	CODE	BESCHREIBUNG	MENGE	POS	CODE	BESCHREIBUNG	MENGE
1	4402050063	FRONTPLATTEADAPTER		12	4402050052	SCHRAUBENSATZ BEFESTIGUNGSPLATINE	
2	4402050053	FRONTPLATTE		13	4402050055	DÜSE KOMPLETT E.C.C.	
3	* 4402050050	SCHRAUBENSATZ BEFESTIGUNGSPLATIN		14	4402050503	O-RING 63 X 4	
3	* 4402050051	SCHRAUBENSATZ BEFESTIGUNGSPLATIN		15	4402050118	ROHR SAUG/DRUCK	
4	4402050054	BEFESTIGUNGSPLATINE EDELSTAHL UND		16	4402050107	ANSCHLUSSFLANSCH UND DICHTUNG	
5	4402050057	REGELVENTIL		17	4402050108	DICHTUNG ABDECKUNG E.C.C.	
6	4401070015	SAUGLEITUNG 1,5 M		18	4402050058	SCHRAUBENSATZ HALTEGRIFF	
7	4402050121	SAUGLEITUNG VENTURI L - 300 MM		19	11502	LAGERGEHÄUSE KUNSTSTOFF	
8	4401090402	ERDUNG		20	00243	LAGERGEHÄUSE EDELSTAHL ECC	
9	4402050110	QUETSCHVERSCHRAUBUNG E.C.C.		21	65549	GEGENSTROMPUMPE	
10	4402050109	VENTIL LUFTANSUGUNG		22	65536	STEUERSCHRANK FÜR GEGENSTROMDÜSE	
11	4402050056	DRUCKTASTER KOMPLETT		23	65535	HALTEGRIFF MIT SCHRAUBEN	

CODE **65489, 66470, 66471**

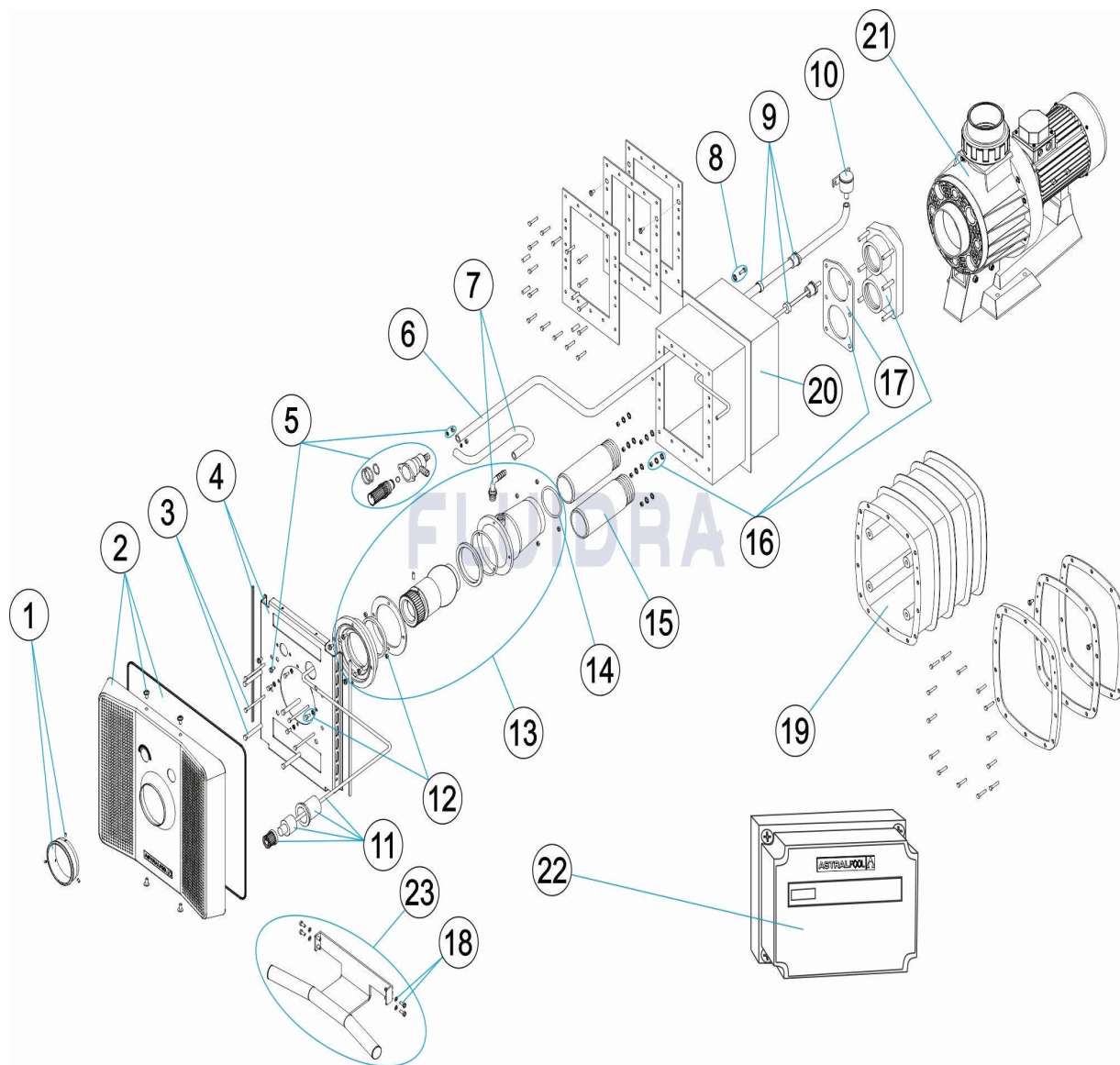
BESCHREIBUNG: **GEGENSCHWIMMGERÄT**

HINWEISE

POS	CODE	HINWEISE
3	* 4402050050	FÜR: PLASTIC
3	* 4402050051	FÜR: STAINLESS STEEL

CODIGO **65489, 66470, 66471**

DESCRIÇÃO: **EQUIPAMENTO NATAÇÃO CONTRA-CORRENTE**



PORTUGUES

POS	CODIGO	DESCRIÇÃO	JANTIDADE	POS	CODIGO	DESCRIÇÃO	JANTIDADE
1	4402050063	ADAPTADOR ESPELHO FRONTAL		12	4402050052	PARAFUSOS PLACA FIXAÇÃO	
2	4402050053	ESPELHO FRONTAL		13	4402050055	BOCA COMPLETA E.C.C.	
3	* 4402050050	PARAFUSOS PLACA FIXAÇÃO INOX.		14	4402050503	JUNTA TÓRICA 63X4	
3	* 4402050051	PARAFUSOS PLACA FIXAÇÃO		15	4402050118	TUBO ASPIRAÇÃO / IMPULSÃO	
4	4402050054	PLACA FIXAÇÃO INOX E PERFIL		16	4402050107	FLANGE LIGAÇÃO COM JUNTA	
5	4402050057	VÁLVULA REGULAÇÃO E.C.C.		17	4402050108	JUNTA TAMPA E.C.C.	
6	4401070015	TUBAGEM DE ASPIRAÇÃO 1,5 M.		18	4402050058	CONJ. PARAFUSOS AGARRADEIRA	
7	4402050121	TUBO ASPIRAÇÃO VENTURI L-300 M/M.		19	11502	CAIXA DE ALOJAMENTO PLÁSTICO	
8	4401090402	LIGAÇÃO A TERRA		20	00243	CAIXA ALOJAMENTO INOX	
9	4402050110	BUCIN		21	65549	BOMBA CONTRA-CORRENTE	
10	4402050109	VÁLVULA ASPIRAÇÃO AR		22	65536	QUADRO DE COMANDO PARA CONTRACOI	
11	4402050056	PURSÁTIL COMPLETO		23	65535	AGARRADEIRA + PARAFUSOS	

CODIGO 65489, 66470, 66471

DESCRIÇÃO: EQUIPAMENTO NATAÇÃO CONTRA-CORRENTE

OBSERVACÕES

POS	CODIGO	OBSERVACÕES
3	* 4402050050	PARA: PLASTIC
3	* 4402050051	PARA: STAINLESS STEEL