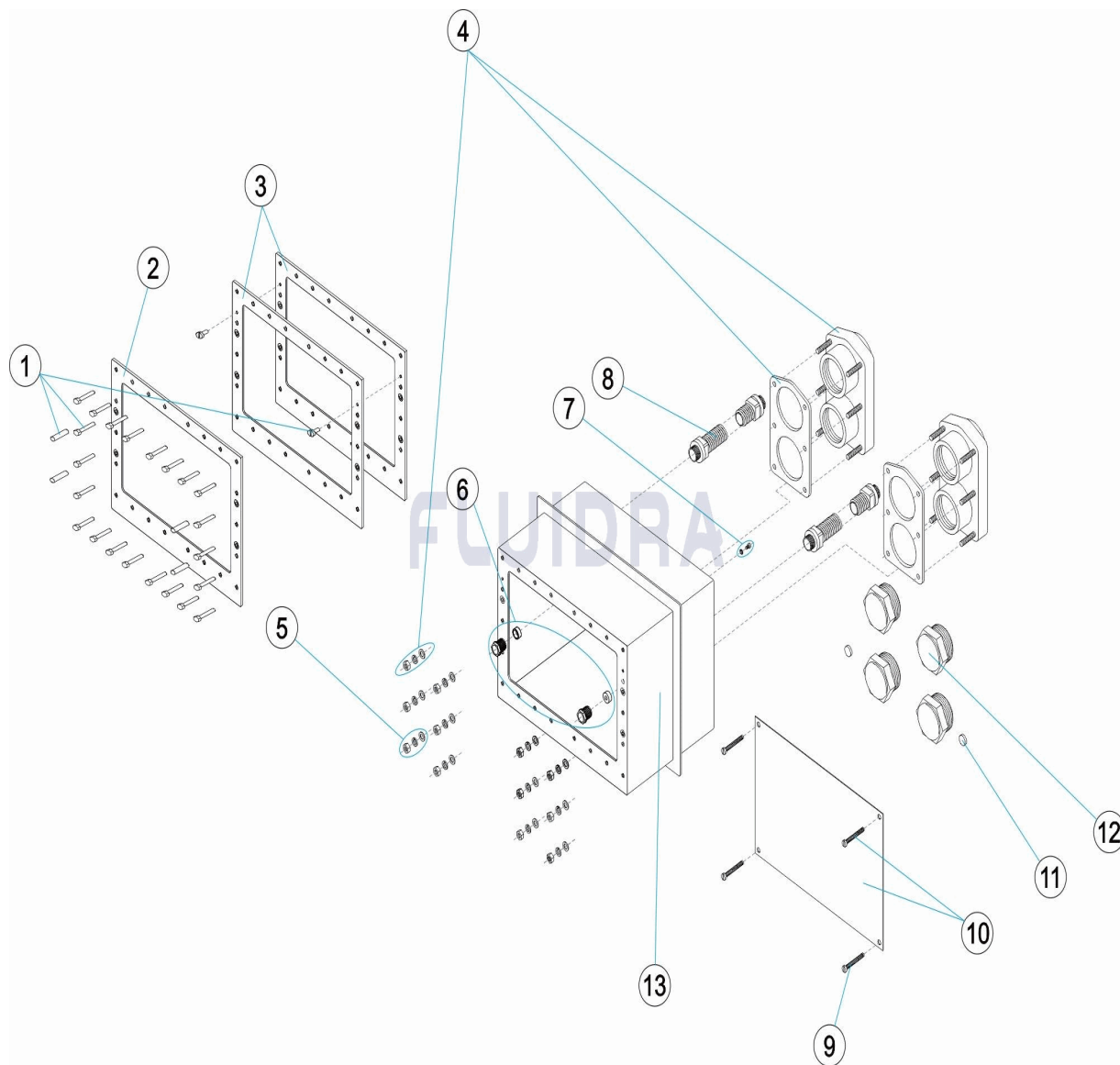


CODIGO **05555, 05558**

DESCRIPCION: **CAJA ALOJAMIENTO INOX. DOBLE**



**ESPAÑOL**

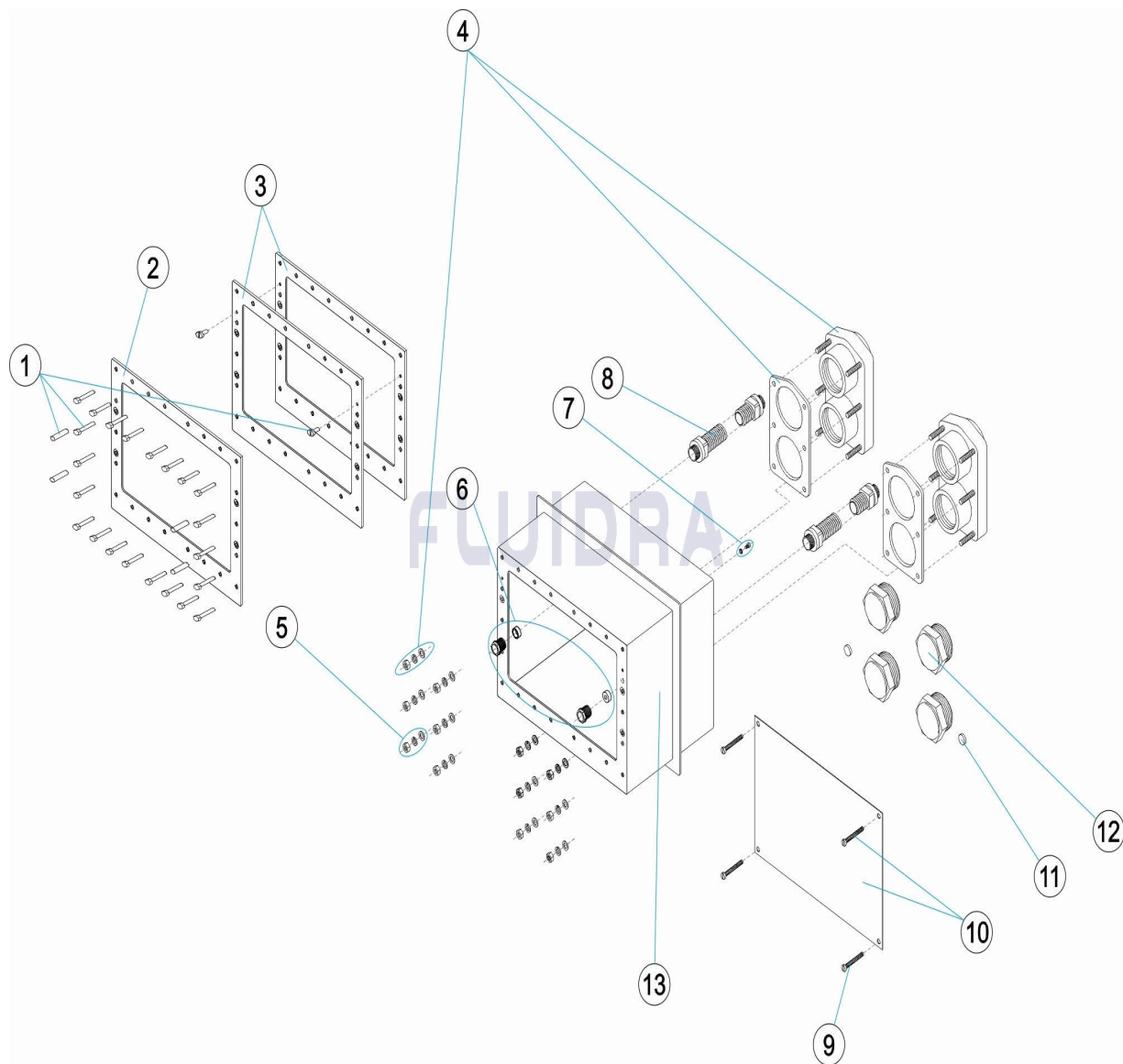
POS	CODIGO	DESCRIPCION	CANTIDAD	POS	CODIGO	DESCRIPCION	CANTIDAD
1	* 4402050116	TORNILLERIA MARCO INOX. DOBLE		8	4402050029	MANGUERA PASACABLES	
2	* 4402050505	MARCO INOX. DOBLE		9	4402050026	BOLSA TORNILLOS	
3	* 4402050113	JUNTA MARCO DOBLE E.C.C.		10	4402050059	TAPA CAJA INOX + TORNILLOS	
4	4402050107	BRIDA CONEXIÓN CON JUNTA		11	4402050028	JUNTA CIEGA	
5	4402050025	TORNILLERIA BRIDA		12	4402050027	TAPON ROSCA MACHO 2"	
6	4402050110	PRENSAESTOPAS E.C.C.		13	05555R0100	CAJA ALOJAMIENTO INOX. DOBLE	
7	4401090402	TOMA DE TIERRA					

CODIGO **05555, 05558**DESCRIPCION: **CAJA ALOJAMIENTO INOX. DOBLE****OBSERVACIONES**

POS	CODIGO	OBSERVACIONES
1	* 4402050116	PARA: LINER
2	* 4402050505	PARA: LINER
3	* 4402050113	PARA: LINER

CODE 05555, 05558

DESCRIPTION: PIECE A SCELLER INOX DOUBLE



FRANCAIS

POS	CODE	DESCRIPTION	QUANTITE	POS	CODE	DESCRIPTION	QUANTITE
1	* 4402050116	VIS FACADE INOX DOUBLE		8	4402050029	PASSE-CÂBLE	
2	* 4402050505	CADRE INOX DOUBLE		9	4402050026	SACHET VISSERIE	
3	* 4402050113	JOINT FACADE DOUBLE		10	4402050059	TÔLE COFFRAGE + VIS	
4	4402050107	BRIDE DE CONNEXION AVEC JOINT		11	4402050028	JOINT AVEUGLE	
5	4402050025	VIS FLASQUE		12	4402050027	BOUCHON VISSÉ MÂLE 2"	
6	4402050110	PRESSE ETOUPE		13	05555R0100	PIECE A SCELLER INOX DOUBLE	
7	4401090402	PRISE DE TERRE					

CODE **05555, 05558**

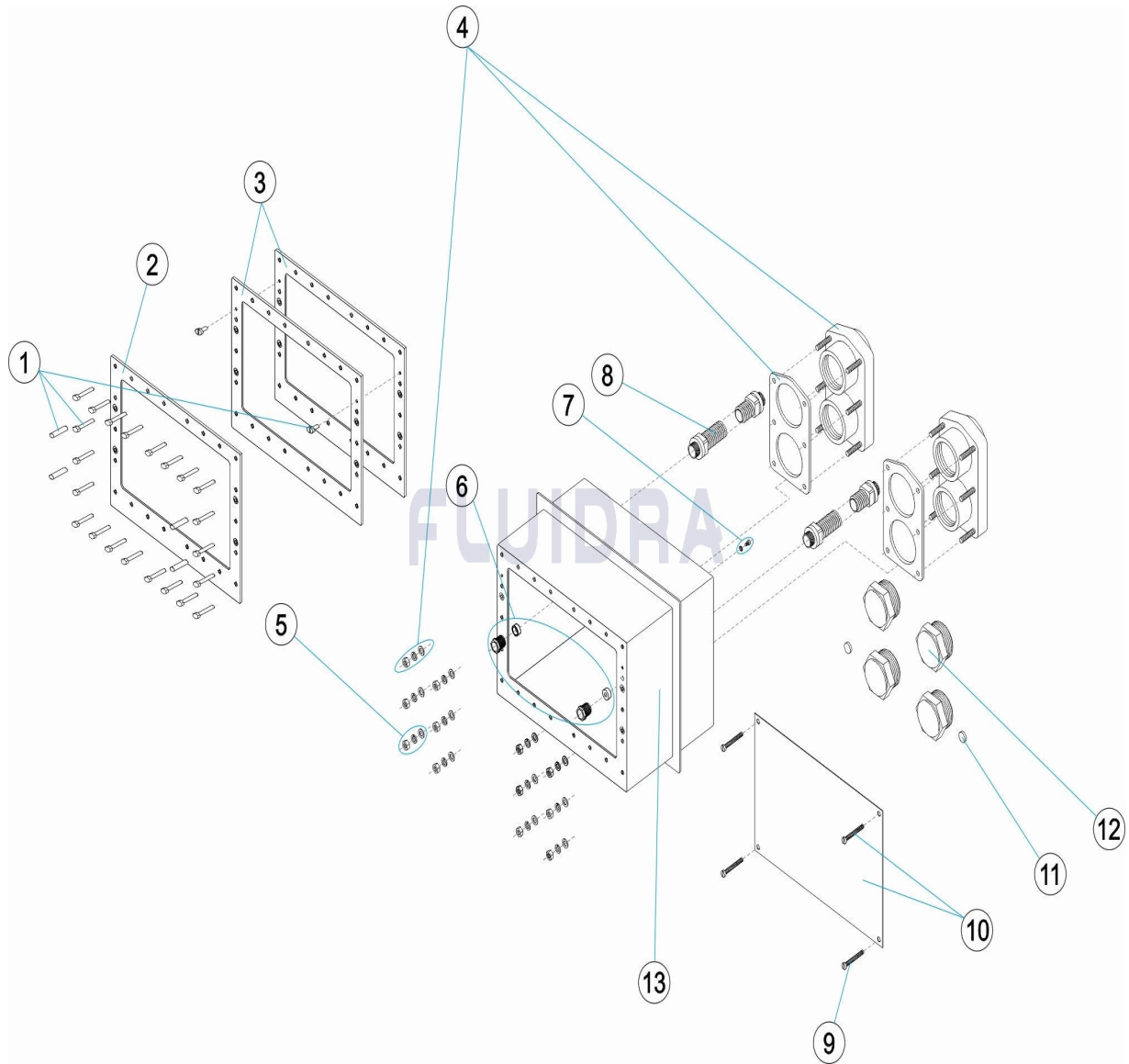
DESCRIPTION: **PIECE A SCELLER INOX DOUBLE**

**OBSERVATIONS**

POS	CODE	OBSERVATIONS
1	* 4402050116	POUR: LINER
2	* 4402050505	POUR: LINER
3	* 4402050113	POUR: LINER

CODE **05555, 05558**

DESCRIPTION: **S.S. TWIN HOUSING CASE**



**ENGLISH**

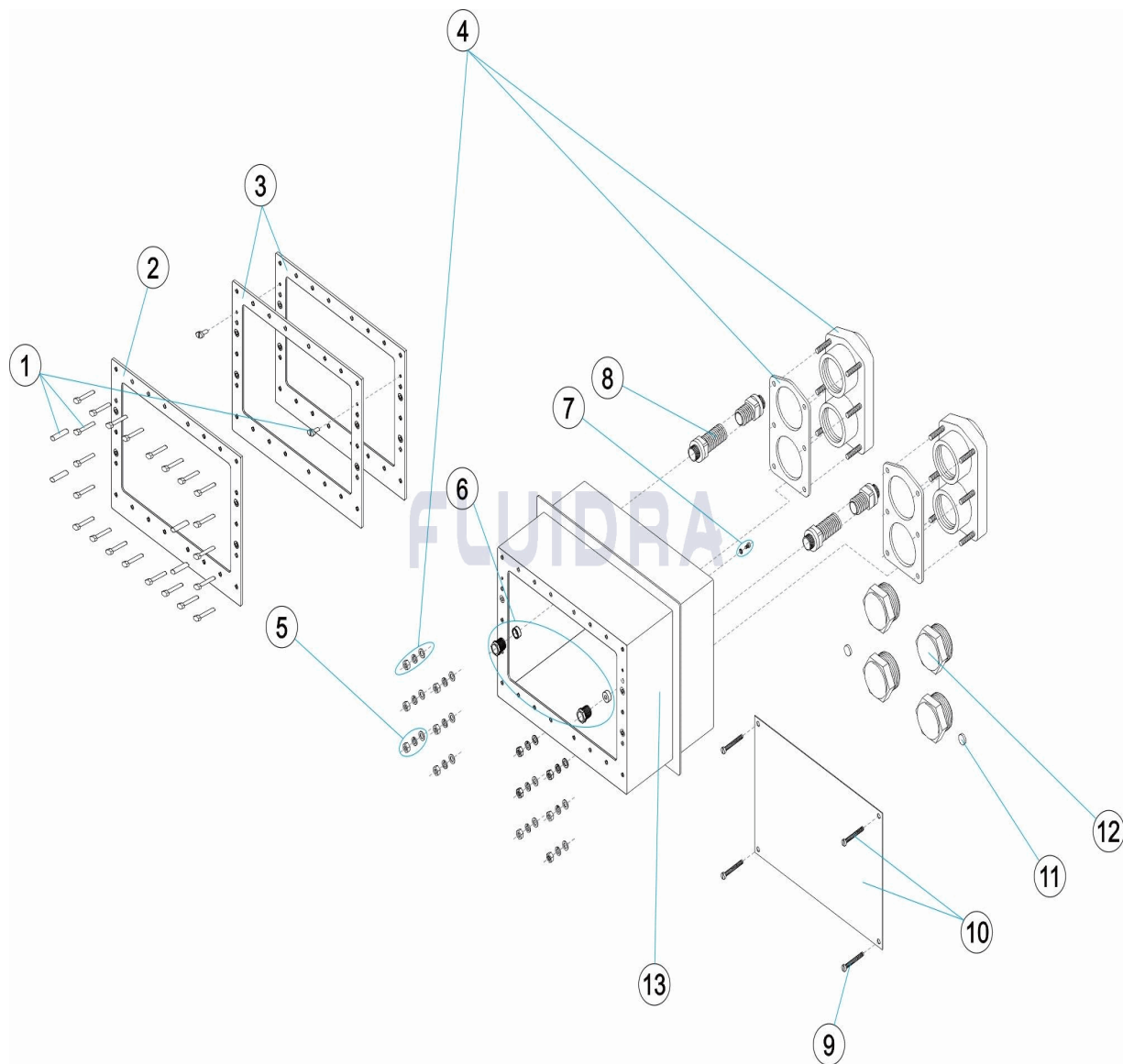
POS	CODE	DESCRIPTION	QUANTITY	POS	CODE	DESCRIPTION	QUANTITY
1	* 4402050116	DOUBLE HEADER FRAME SCREWS		8	4402050029	HOSE CABLE GLAND	
2	* 4402050505	S. S. TWIN FRAME		9	4402050026	BOLT SET BAG	
3	* 4402050113	CCU DOUBLE HEADER FRAME GASKET		10	4402050059	FORMWORK SHEET + SCREWS	
4	4402050107	FLANGE CONNECTION WITH GASKET		11	4402050028	BLIND GASKET	
5	4402050025	FLANGE SCREWS		12	4402050027	THREADED CAP MALE 2"	
6	4402050110	CCU CABLE GLAND		13	05555R0100	S.S. TWIN HOUSING CASE	
7	4401090402	EARTH CONNECTION					

CODE **05555, 05558**DESCRIPTION: **S.S. TWIN HOUSING CASE****OBSERVATIONS**

POS	CODE	OBSERVATIONS
1	* 4402050116	FOR: LINER
2	* 4402050505	FOR: LINER
3	* 4402050113	FOR: LINER

CODICE 05555, 05558

DESCRIZIONE: NICCHIA ALLOGGIAMENTO INOX DOPPIO



ITALIANO

POS	CODICE	DESCRIZIONE	QUANTITA'	POS	CODICE	DESCRIZIONE	QUANTITA'
1	* 4402050116	BULLONERIA PER CORNICE INOX DOPPIA		8	4402050029	MANICOTTO PASSACAVI	
2	* 4402050505	CORICE INOC NCC DOPPIO		9	4402050026	SACCO VITI	
3	* 4402050113	GUANIZIONE PER CORNICE DOPPIA N.C.C		10	4402050059	PIASTRA + VITI	
4	4402050107	FLANGIA FISSAGGIO CON GUARNIZIONE		11	4402050028	GUARNIZIONE CIECA	
5	4402050025	BUTIONERIA FLANGIA		12	4402050027	TAPPO FILETTATO MASCHIO 2"	
6	4402050110	PRESSACAVO N.C.C.		13	05555R0100	NICCHIA ALLOGGIAMENTO INOX DOPPIO	
7	4401090402	PRESA A TERRA					

CODICE           **05555, 05558**

DESCRIZIONE: **NICCHIA ALLOGGIAMENTO INOX DOPPIO**

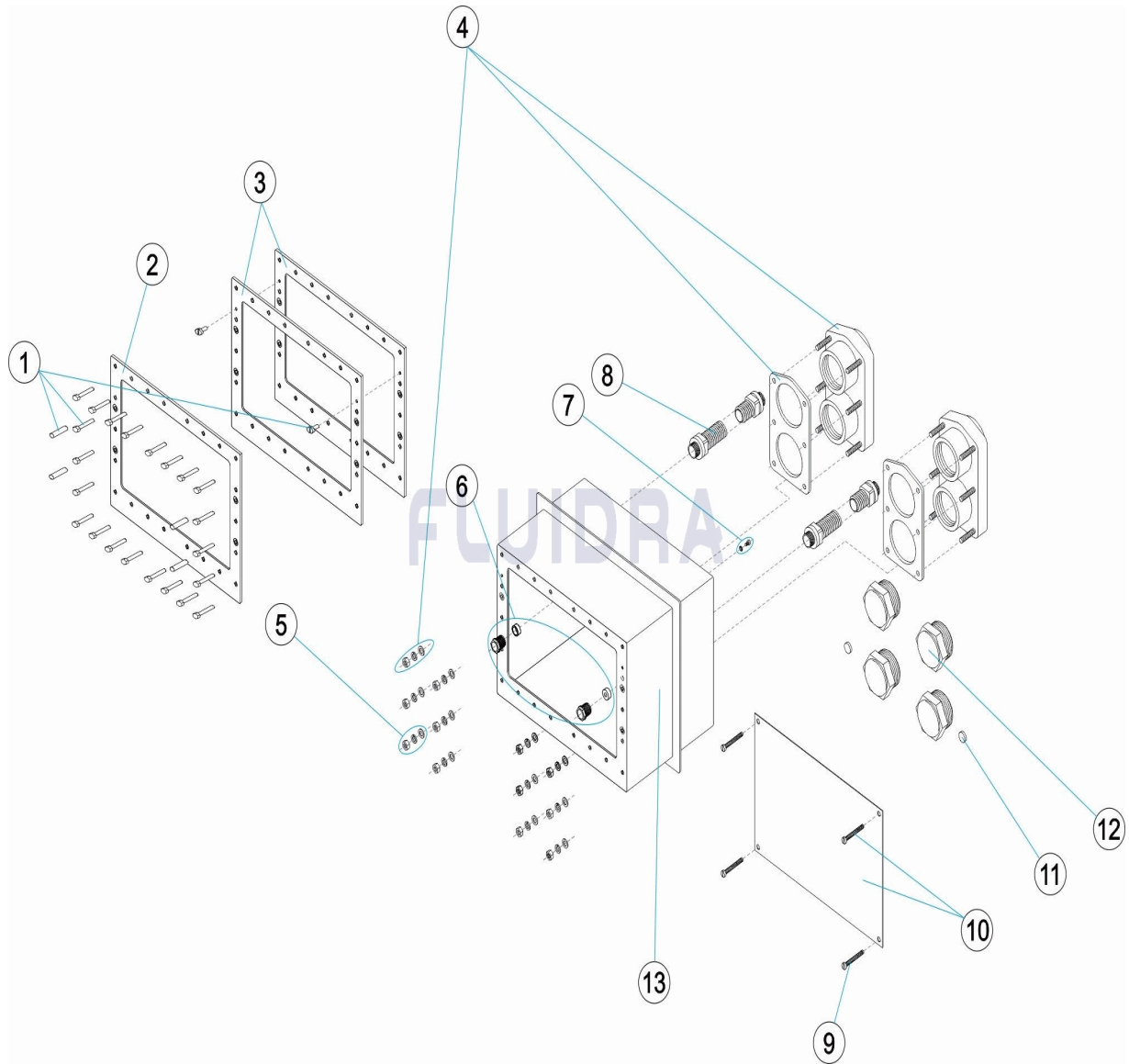
## OSSERVAZIONI

POS	CODICE	OSSERVAZIONI
1	* 4402050116	PER: LINER
2	* 4402050505	PER: LINER
3	* 4402050113	PER: LINER



CODE **05555, 05558**

BESCHREIBUNG: **LAGERGEHÄUSE EDELSTAHL DOPPELT**



**DEUTSCH**

POS	CODE	BESCHREIBUNG	MENGE	POS	CODE	BESCHREIBUNG	MENGE
1	* 4402050116	SCHRAUBENSATZ RAHMEN EDELSTAHL D		8	4402050029	SCHLAUCH KABELDURCHFÜHRUNG	
2	* 4402050505	DOPPELTER EDELSTAHLRAHMEN		9	4402050026	PACK SCHRAUBEN	
3	* 4402050113	DICHTUNG RAHMEN DOPPELT E.C.C.		10	4402050059	ABDECKUNG SCHRAUBEN	
4	4402050107	ANSCHLUSSFLANSCH UND DICHTUNG		11	4402050028	BLINDDICHTUNG	
5	4402050025	SCHRAUBENSATZ FLANSCH		12	4402050027	STOPFEN AUSSENGEWINDE 2"	
6	4402050110	QUETSCHVERSCHRAUBUNG E.C.C.		13	05555R0100	LAGERGEHÄUSE EDELSTAHL DOPPELT	
7	4401090402	ERDUNG					

CODE                    **05555, 05558**

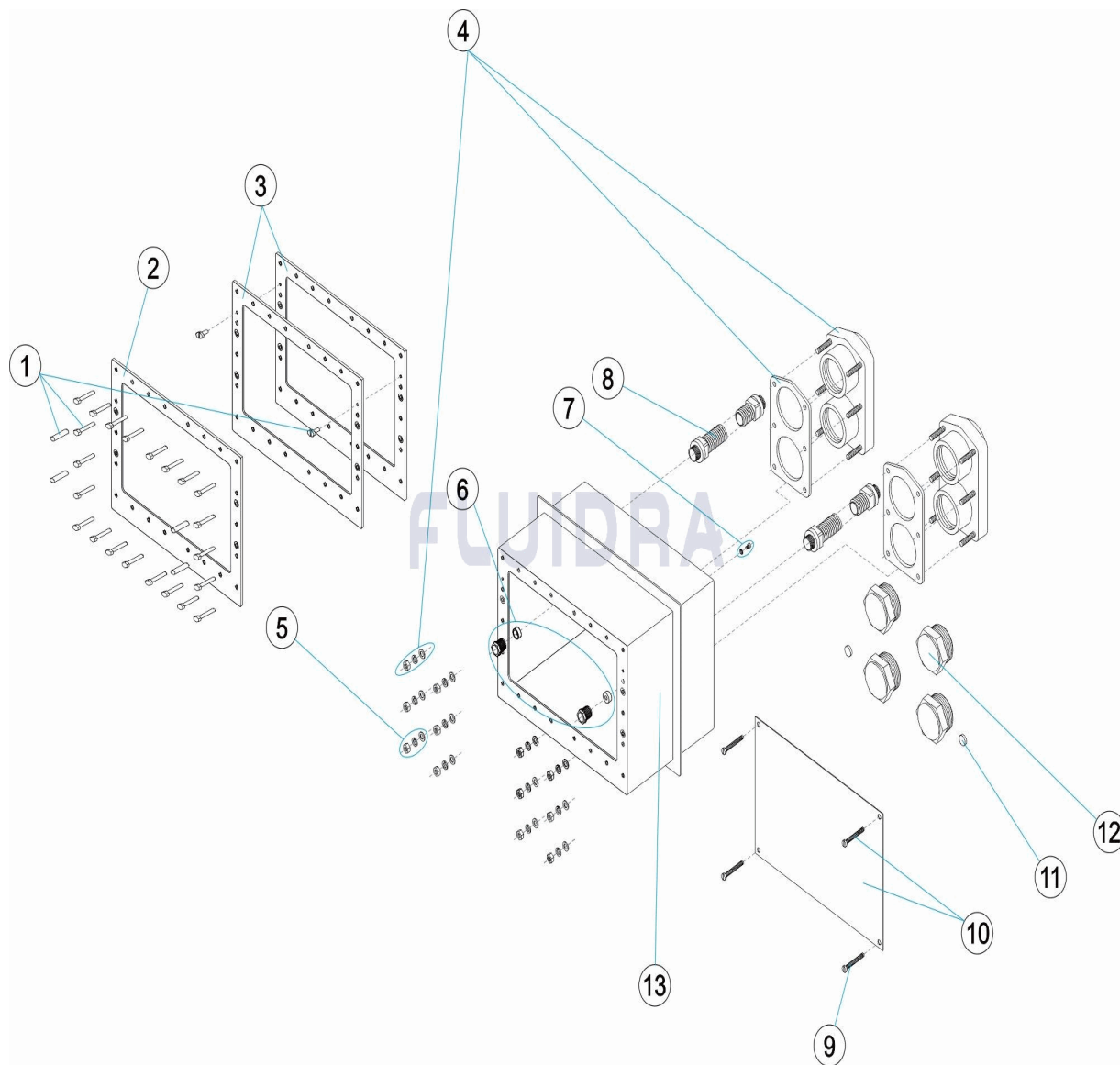
BESCHREIBUNG: **LAGERGEHÄUSE EDELSTAHL DOPPELT**

## HINWEISE

POS	CODE	HINWEISE
1	* 4402050116	FÜR: LINER
2	* 4402050505	FÜR: LINER
3	* 4402050113	FÜR: LINER

CODIGO **05555, 05558**

DESCRIÇÃO: **CAIXA ALOJAMENTO INOX DUPLA**



**PORTUGUES**

POS	CODIGO	DESCRIÇÃO	JANTIDADE	POS	CODIGO	DESCRIÇÃO	JANTIDADE
1	* 4402050116	PARAFUSOS ARO INOX. DUPLO		8	4402050029	MANGUEIRA PASSA-CABOS	
2	* 4402050505	ARO INOX DUPLO		9	4402050026	BOLSA PARAFUSOS	
3	* 4402050113	JUNTA ARO DUPLO E.C.C.		10	4402050059	CHAPA COFRAGEM + PARAFUSOS	
4	4402050107	FLANGE LIGAÇÃO COM JUNTA		11	4402050028	JUNTA CEGA	
5	4402050025	PARAFUSOS DA FLANGE		12	4402050027	TAMPA ROSCA MACHO 2"	
6	4402050110	BUCIN		13	05555R0100	CAIXA ALOJAMENTO INOX DUPLA	
7	4401090402	LIGAÇÃO A TERRA					

CODIGO                   **05555, 05558**

DESCRIÇÃO: **CAIXA ALOJAMENTO INOX DUPLA**

## OBSERVAÇÕES

POS	CODIGO	OBSERVAÇÕES
1	* 4402050116	PARA: LINER
2	* 4402050505	PARA: LINER
3	* 4402050113	PARA: LINER