

DESPIECE

REV: 1

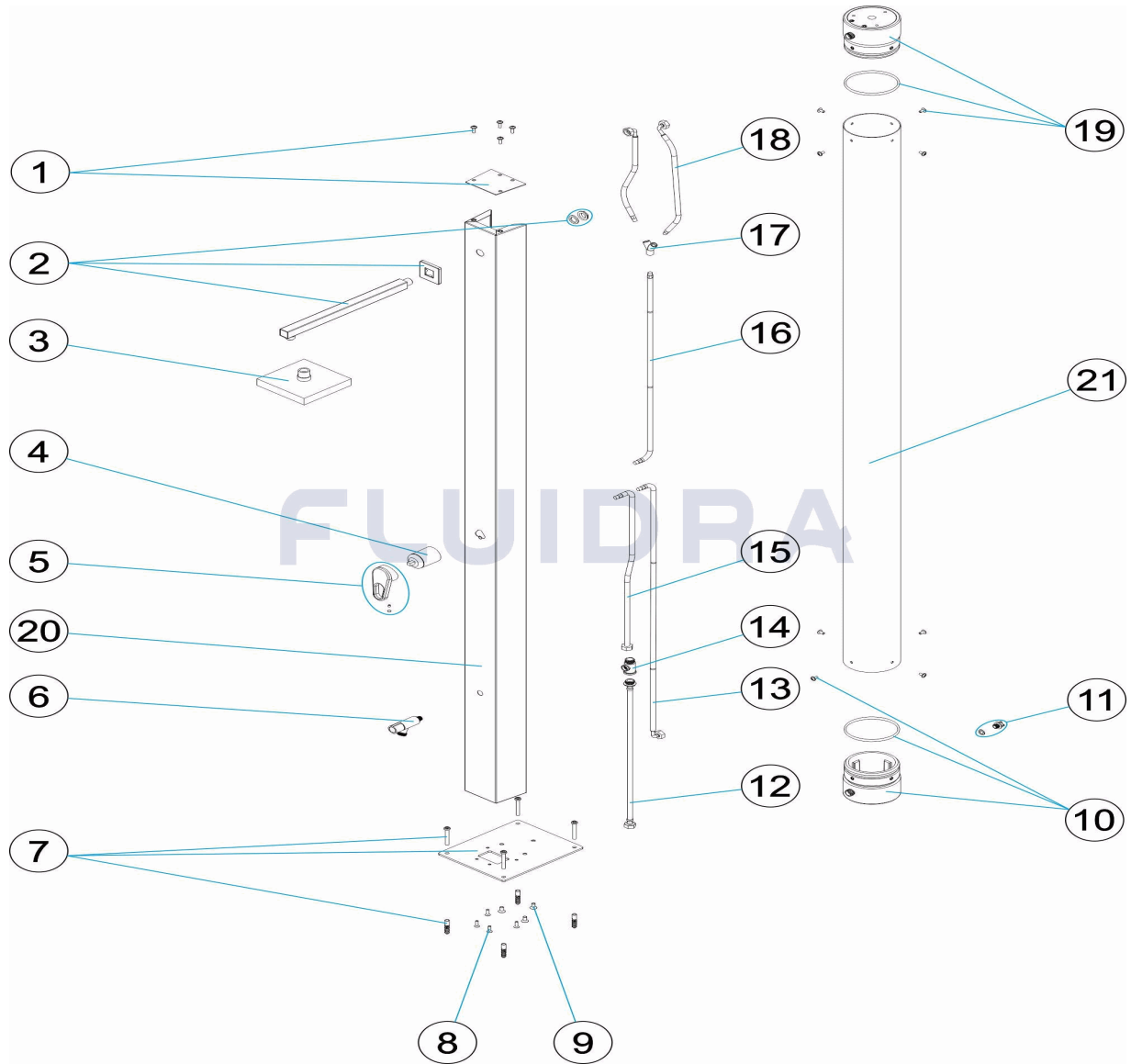
1142

FECHA: 30/04/2019

HOJA: 1/6

CODIGO **M00553**

DESCRIPCION: **DUCHA SOLAR INOX 30 LITROS**



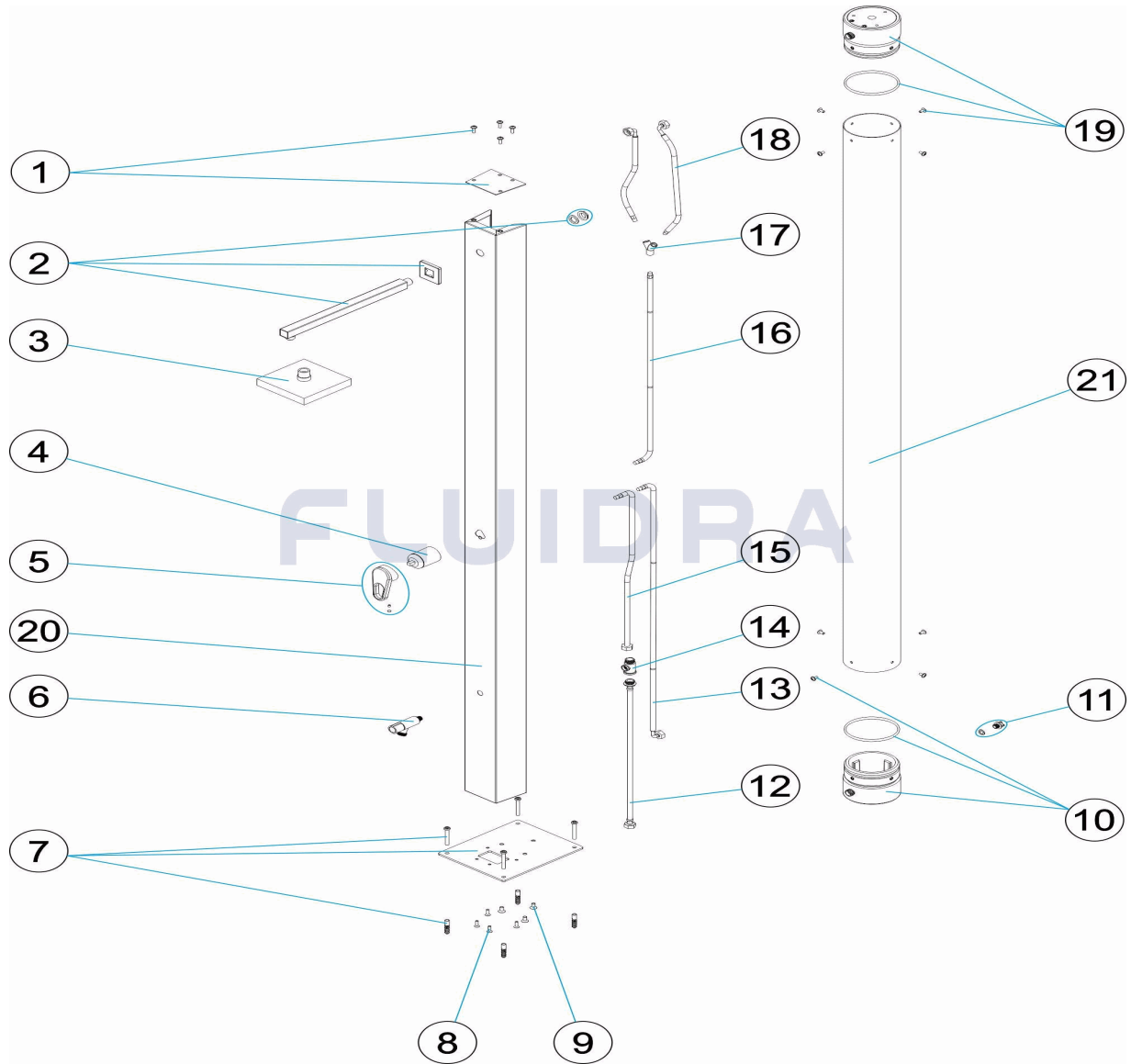
ESPAÑOL

POS	CODIGO	DESCRIPCION	CANTIDAD	POS	CODIGO	DESCRIPCION	CANTIDAD
1	4401040279	TAPA SUPERIOR		12	4401040048	LATIGUILLO 1/2" M - 1/2" H L=550 MM "	
2	4401040053	BRAZO DUCHA		13	4401043617	LATIGUILLO 1/2" HEMBRA CODO + M-10 MA	
3	4401040052	ROCIADOR		14	4401040049	TE 1/2" M.-1/4" H.-1/2" H "	
4	4401043605	CUERPO MONOMANDO		15	4401040037	LATIGUILLO 1/2" H. M-10 M. L=800 MM "	
5	4401040281	POMO MONOMANDO		16	4401043616	LATIGUILLO 1/2" HEMBRA + M-10 MACHO L:	
6	4401040050	GRIFO LAVAPIES		17	4401043615	CONEXIÓN "Y" M-10 HEMBR "	
7	4401040280	PLACA ANCLAJE CUERPO		18	4401043614	LATIGUILLO 1/2" HEMBRA + M-10 MACHO L:	
8	4401040276	TORNILLERIA FIJACION DUCHA		19	4401040072	TAPON SIN PURGA	
9	4401040277	TORNILLERIA FIJACION DEPOSITO		20	M00553R0120	CUERPO DUCHA SOLAR	
10	4401040073	TAPON CON PURGA		21	36848R0210	TUBO DEPOSITO PINTADO	
11	4401043621	CJTO. TAPON PURGA					

CODE

M00553

DESCRIPTION: DOUCHE SOLAIRE INOX 30 LITRES


FRANCAIS

POS	CODE	DESCRIPTION	QUANTITE	POS	CODE	DESCRIPTION	QUANTITE
1	4401040279	COUVERCLE SUPÉRIEUR		12	4401040048	TUYAU 1/2" M - 1/2" H L=550 MM "	
2	4401040053	BRAS DE DOUCHE		13	4401043617	TUYAU 1/2" FEMELLE COUDE + M-10 MÂLE	
3	4401040052	POMME DE DOUCHE		14	4401040049	TE 1/2" M.-1/4" H.-1/2" H "	
4	4401043605	CORPS MITIGEUR		15	4401040037	TUYAU 1/2" FEMELLE + M-10 MÂLE L=800"	
5	4401040281	ROBINET MITIGEUR		16	4401043616	TUYAU 1/2" FEMELLE + M-10 MÂLE L=800"	
6	4401040050	ROBINET RINCE PIEDS		17	4401043615	RACCORD "Y" M-10 FEMELL "	
7	4401040280	PLAQUE FIXATION CORPS		18	4401043614	TUYAU 1/2" FEMELLE + M-10 MÂLE L=400"	
8	4401040276	VISSERIE DE FIXATION DE DOUCHE		19	4401040072	BOUCHON SANS PURGE	
9	4401040277	VISSERIE DE FIXATION RÉSERVOIR		20	M00553R0120	CORPS DOUCHE SOLAIRE	
10	4401040073	BOUCHON AVEC PURGE		21	36848R0210	RESERVOIR	
11	4401043621	ENSEMBLE BOUCHON PURGE					

PARTS BREAKDOWN

REV.: 1

1142

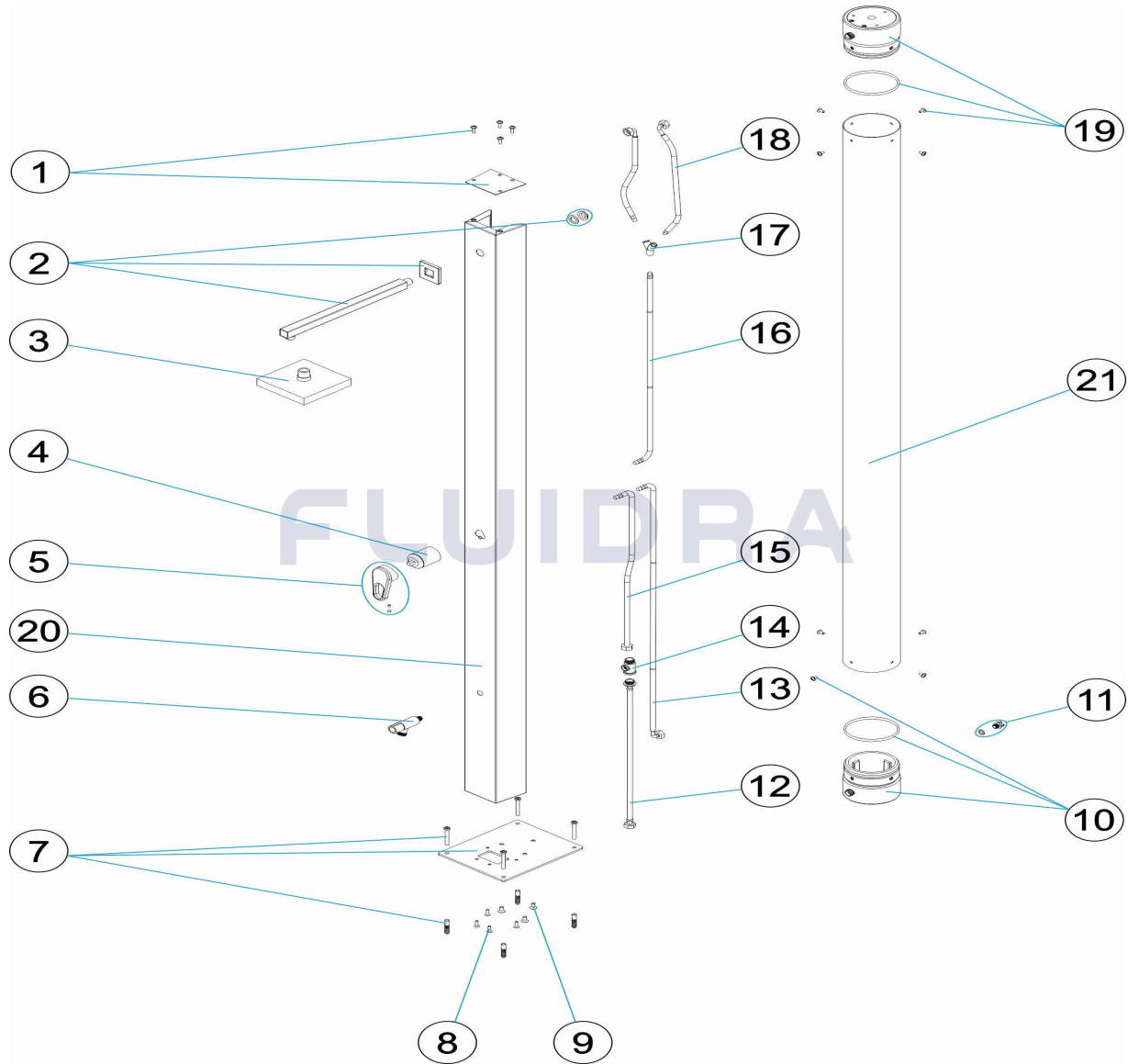
DATE: 30/04/2019

SHEET: 3/6

CODE

M00553

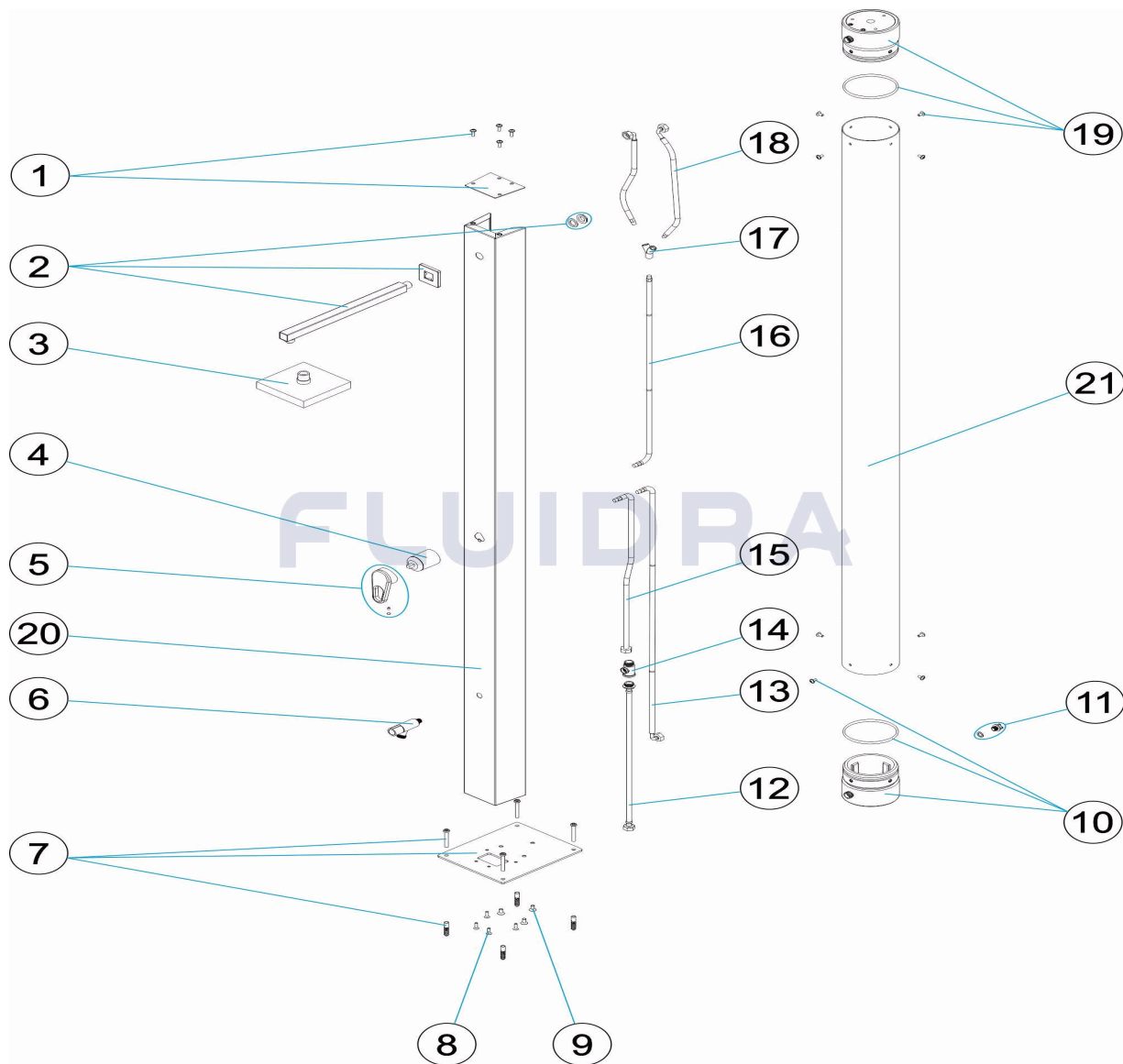
DESCRIPTION: **S.S. SOLAR SHOWER 30 LTS.**



ENGLISH

POS	CODE	DESCRIPTION	QUANTITY	POS	CODE	DESCRIPTION	QUANTITY
1	4401040279	TOP COVER		12	4401040048	FLEXIBLE HOSE 1/2" M - 1/2" H L=550 MM '	
2	4401040053	SHOWER ARM		13	4401043617	FLEXIBLE HOSE 1/2" FEMALE ELBOW + M-	
3	4401040052	SPRINKLER		14	4401040049	1/2" M.-1/4" H.-1/2" H. 'TE ' "	
4	4401043605	SINGLE-LEVER HANDLE CASING		15	4401040037	FLEXIBLE HOSE 1/2" FEMALE + M-10 MALE	
5	4401040281	SINGLE-LEVER KNOB		16	4401043616	FLEXIBLE HOSE 1/2" FEMALE + M-10 MALE	
6	4401040050	FOOTBATH TAP		17	4401043615	Y" CONNECTOR M-10 FEMAL "	
7	4401040280	UNIT ANCHORING PLATE		18	4401043614	FLEXIBLE HOSE 1/2" FEMALE + M-10 MALE	
8	4401040276	SHOWER FIXING SCREWS		19	4401040072	CAP WITHOUT PURGE	
9	4401040277	TANK FIXING SCREWS		20	M00553R0120	BODY SOLAR SHOWER	
10	4401040073	CAP WITH PURGE		21	36848R0210	PAINTED SOLAR SHOWER DEPOSIT	
11	4401043621	DRAIN CAP SET					

CODICE **M00553**

 DESCRIZIONE: **DOCCIA SOLARE INOX 30 LITRI**

ITALIANO

POS	CODICE	DESCRIZIONE	QUANTITA'	POS	CODICE	DESCRIZIONE	QUANTITA'
1	4401040279	COPERCHIO SUPERIORE		12	4401040048	SPINOTTO 1/2" M - 1/2" H L=550 MM "	
2	4401040053	BRACCIO DOCCIA		13	4401043617	SPINOTTO 1/2" FEMMINA A GOMITO + M-1C	
3	4401040052	SPRUZZATORE		14	4401040049	T' 1/2" M.-1/4" H.-1/2" H "	
4	4401043605	CORPO MONOCOMANDO		15	4401040037	SPINOTTO 1/2" FEMMINA + M-10 MASCHIO	
5	4401040281	POMELLO MONOCOMANDO		16	4401043616	SPINOTTO 1/2" FEMMINA + M-10 MASCHIO	
6	4401040050	RUBINETTO LAVAPIEDI		17	4401043615	CONNESSIONE "Y" M-10 FEMMIN "	
7	4401040280	PLACCA ANCORAGGIO CORPO		18	4401043614	SPINOTTO 1/2" FEMMINA + M-10 MASCHIO	
8	4401040276	KIT BULLONERIA FISSAGGIO DOCCIA		19	4401040072	TAPPO SENZA PURGA	
9	4401040277	KIT BULLONERIA FISSAGGIO SERBATOIO		20	M00553R0120	CORPO DOCCIA SOLARE	
10	4401040073	TAPPO CON PURGA		21	36848R0210	DEPOSITO DOCCIA SOLARE DIPINTO	
11	4401043621	CONGIUNTO COPERCHIO SPURGO					

EINZELTEILE

ÜBER.: 1

1142

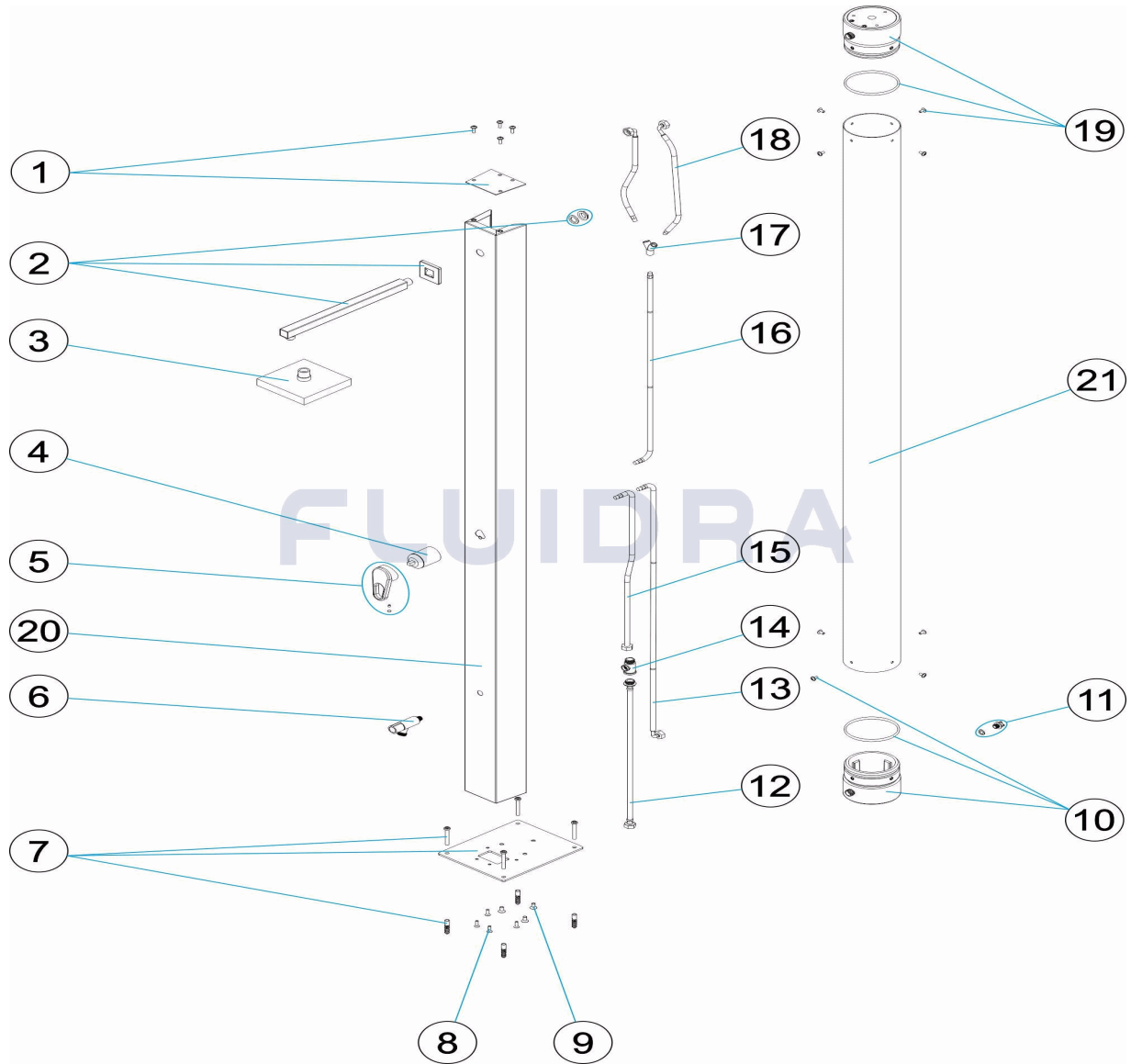
DATUM: 30/04/2019

BLATT: 5/6

CODE

M00553

BESCHREIBUNG: DUSCHE SOLAR EDELSTAHL 30 L



DEUTSCH

POS	CODE	BESCHREIBUNG	MENGE	POS	CODE	BESCHREIBUNG	MENGE
1	4401040279	ABDECKUNG OBEN		12	4401040048	SCHLAUCHLEITUNG 1/2" NIPPEL - 1/2" MUF	
2	4401040053	DUSCHARM		13	4401043617	SCHLAUCHLEITUNG 1/2" MUFFE WINKEL U	
3	4401040052	DUSCHKOPF		14	4401040049	T-STÜCK 1/2" NIPPEL - 1/4" MUFFE - 1/2" ML	
4	4401043605	GEHÄUSE EINHANDHEBEL		15	4401040037	SCHLAUCHLEITUNG 1/2" MUFFE M-10 NIPP	
5	4401040281	EINHANDHEBEL		16	4401043616	SCHLAUCHLEITUNG 1/2" MUFFE UND M-10	
6	4401040050	WASSERHAHN FUSSDUSCHE		17	4401043615	ANSCHLUSSMUFFE "Y" M-10"	
7	4401040280	EINHEIT VERANKERUNGSPLATTE		18	4401043614	SCHLAUCHLEITUNG 1/2" MUFFE UND M-10	
8	4401040276	FIXIERSCHRAUBEN DUSCHE		19	4401040072	STOPFEN OHNE ABLASS	
9	4401040277	FIXIERSCHRAUBEN BEHÄLTER		20	M00553R0120	DUSCHEGEHÄUSE SOLAR	
10	4401040073	STOPFEN MIT ABLASS		21	36848R0210	BEHÄLTER SOLARDUSCHE LACKIERT	
11	4401043621	SET ABLASSSTOPFEN					

ITEM

REV.: 1

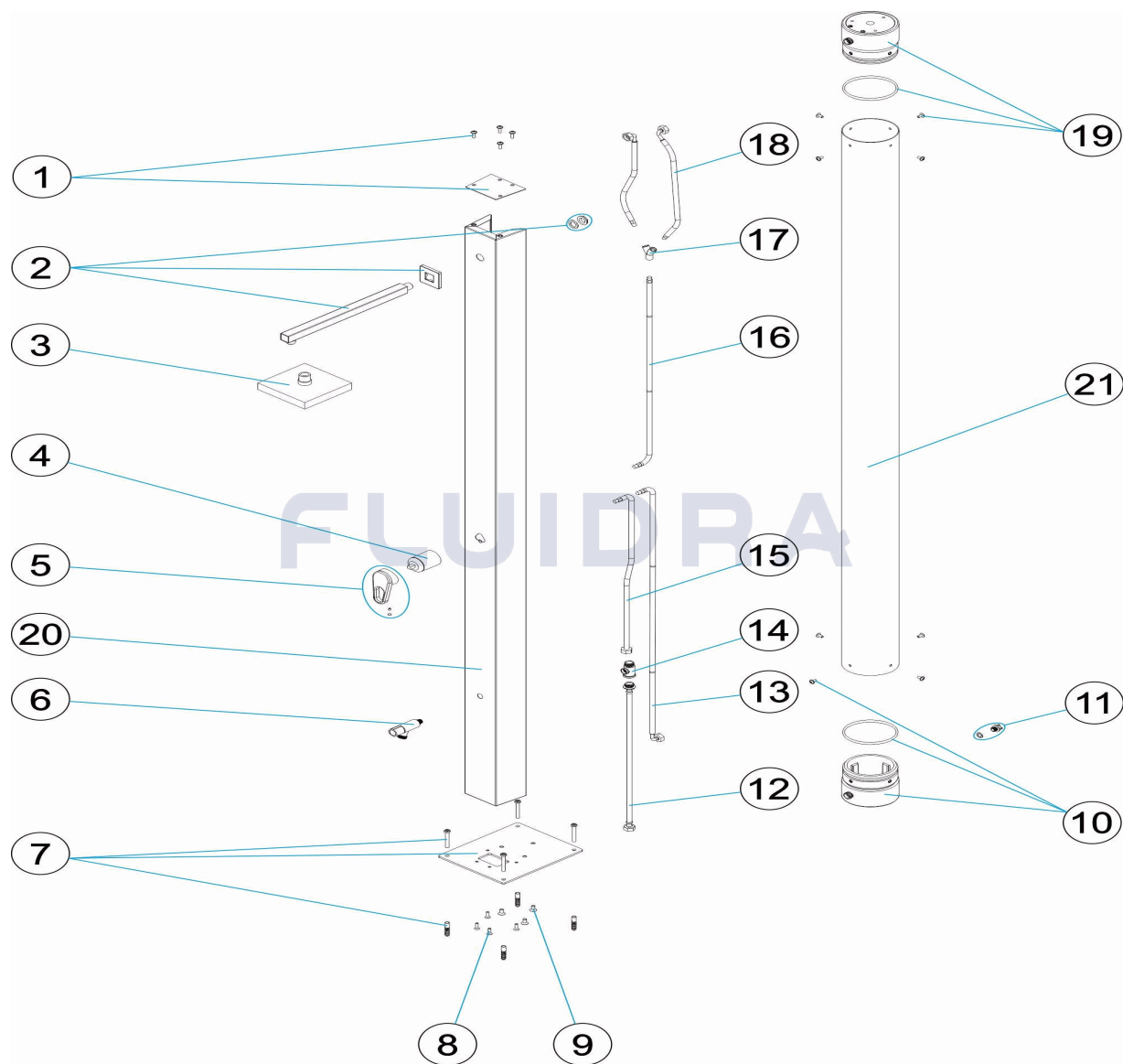
1142

DATA: 30/04/2019

FOLHA: 6/6

CODIGO

M00553

 DESCRIÇÃO: **DUCHE SOLAR INOX 30 LITROS**


PORTUGUES

POS	CODIGO	DESCRIÇÃO	JANTIDADE	POS	CODIGO	DESCRIÇÃO	JANTIDADE
1	4401040279	TAMPA SUPERIOR		12	4401040048	MANGA 1/2" M - 1/2" H L=550 MM "	
2	4401040053	BRAÇO CHUVEIRO		13	4401043617	MANGA 1/2" FÊMEA COTOVELO + M-10 MA	
3	4401040052	DIFUSOR		14	4401040049	TÊ 1/2" M.-1/4" H.-1/2" H "	
4	4401043605	CORPO MONOCOMANDO		15	4401040037	MANGA 1/2" FÊMEA + M-10 MACHO L = 800	
5	4401040281	MAÇANETA MONOCOMANDO		16	4401043616	MANGA 1/2" FÊMEA + M-10 MACHO L = 800	
6	4401040050	TORNEIRA LAVA-PÉS		17	4401043615	LIGAÇÃO "Y" M-10 FÊMEA "	
7	4401040280	PLACA ANCORAGEM CORPO		18	4401043614	MANGA 1/2" FÊMEA + M-10 MACHO L = 400	
8	4401040276	PARAFUSOS FIXAÇÃO CHUVEIRO		19	4401040072	TAMPÃO SEM PURGA	
9	4401040277	PARAFUSOS FIXAÇÃO DEPÓSITO		20	M00553R0120	CORPO DUCHE SOLAR	
10	4401040073	TAMPÃO COM PURGA		21	36848R0210	DEPÓSITO DUCHE SOLAR PINTADO	
11	4401043621	CJTO. TAMPÃO PURGA					