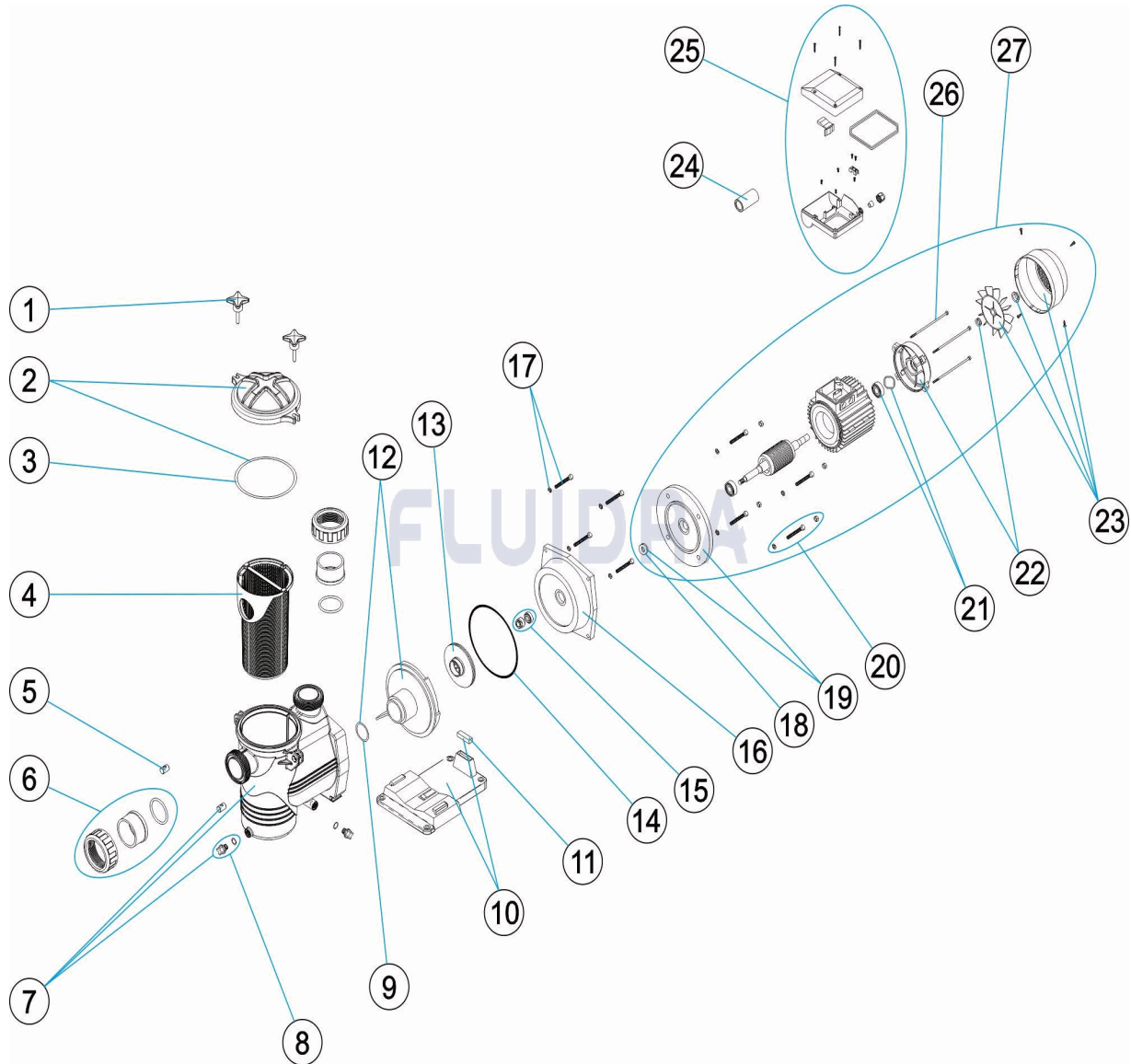


CODIGO **BP050M, BP050T, BP075M, BP075T, BP100M, BP100T, BP150M, BP150T, BP200M, BP200T, BP300M, BP300T**

DESCRIPCION: **BOMBA BURDEOS**



ESPAÑOL

POS	CODIGO	DESCRIPCION	CANTIDAD	POS	CODIGO	DESCRIPCION	CANTIDAD
1	CE05010725	CIERRE PREFILTRO		13	* CE05010196	TURBINA 0,5 CV	
2	CE05010542	TAPA PREFILTRO		13	* CE05010197	TURBINA 0,75 CV	
3	CE05010543	JUNTA TAPA PREFILTRO		13	* CE05010198	TURBINA 1 CV	
4	CE05010191	CESTO PREFILTRO		13	* CE05010199	TURBINA 1,5 CV	
5	CE05010066	PASADOR BASCULANTE		13	* CE05010200	TURBINA 2 CV	
6	CE05010192	CJTO SALIDA ENTRADA BOMBA		13	* CE05010235	TURBINA 3 CV	
7	CE05010544	CUERPO BOMBA		14	CE05010240	JUNTA CUERPO BOMBA	
8	CE04121107	TAPON 1/4 VALVULA		15	CE05010118	JUNTA MECÁNICA	
9	CE05010072	JUNTA TORICA DIFUSOR		16	* CE05010081	BRIDA SOPORTE MOTOR 0,5 / 0,75 / 1 HP	
10	* CE05010067	PIE BOMBA (0,5 A 2 HP)		16	* CE05010082	BRIDA SOPORTE MOTOR 1,5 / 2 / 3 HP	
10	* CE05010068	PIE BOMBA (2 HP)		17	CE05010071	TORNILLOS SUJECION CUERPO	
10	* CE05010069	PIE BOMBA (3 HP)		18	* CE05010047	ARANDELA ROMPE AGUAS	

*** NOTA OBSERVACIONES**

CODIGO **BP050M, BP050T, BP075M, BP075T, BP100M, BP100T, BP150M, BP150T, BP200M, BP200T, BP300M, BP300T**

DESCRIPCION: BOMBA BURDEOS

11	* CE05010410	SILENT-BLOCK (9X45X13)	18	* CE05010547	ARANDELA ROMPE AGUAS 1,5 CV
11	* CE05010070	SILENT BLOCK 2 / 3 HP	18	* CE05010548	ARANDELA ROMPE AGUAS 2-3 CV
12	CE05010073	DIFUSOR	19	* CE05010242	TAPA MOTOR DELANTERA 0,5-1CV.
19	* CE05010549	BRIDA MOTOR 1,5 CV.	25	* CE05010058	CAJA CONEXIONES COMPLETA III
19	* CE05010550	BRIDA MOTOR 2-3 CV.	25	* CE05010261	CAJA CONEXIONES COMPLETA 1,5-3 CV. II
20	* CE05010248	TORNILLOS FIJACION MOTOR 0,5-1 CV.	25	* CE05010190	CAJA CONEXIONES COMPLETA 1,5-3 CV. III
20	* CE05012035	TORNILLOS FIJACION BRIDA C.71	26	* CE05010254	ESPARRAGO MOTOR 0.5-1 CV
20	* CE05010250	TORNILLOS FIJACION MOTOR 2-3 CV.	26	* CE05010255	ESPARRAGO MOTOR 1.5 CV
21	* CE05010050	RODAMIENTO MOTOR	26	* CE05010256	ESPARRAGO MOTOR 2 CV
21	* CE05010246	RODAMIENTO 1,5 CV	26	* CE05010726	ESPARRAGO MOTOR 3 CV
21	* CE05010247	RODAMIENTO 2-3 CV	27	* SE050MR0300	MOTOR NI/DY/SE2N/SE2R050M
22	* CE05010052	TAPA TRASERA MOTOR ½-¾1 HP	27	* SE050TR0300	MOTOR NI/DY/SE2N/SE2R050T
22	* CE05010551	TAPA MOTOR 1,5 CV	27	* SE075MR0300	MOTOR NI/DY/SE2N/SE2R075M
22	* CE05010552	TAPA MOTOR 2-3 CV	27	* SE075TR0300	MOTOR NI/DY/SE2N/SE2R075T
23	* CE05010056	CJTO. VENTILADOR + VTAPA 0,75 / 1 / 1,5 C	27	* SE100MR0300	MOTOR NI/DY/SE2N/SE2R100M
23	* CE05010258	TAPA VENTILADOR + VENTILADOR 1,5 CV	27	* SE100TR0300IE2	MOTOR IE2 NI/DY/SE2N/SE2R100T
23	* CE05010259	TAPA VENTILADOR + VENTILADOR 2-3 CV	27	* SE150MR0300	MOTOR NI/DY/SE2N/SE2R150M
24	* CE05010059	CONDENSADOR 12MF. 0,33 / 0,50 CV.	27	* SE150TR0300IE2	MOTOR IE2 NI/DY/SE2N/SE2R150T
24	* CE05010060	CONDENSADOR 20MF. 0,75 / 1 / 1,5 CV.	27	* SE200MR0300	MOTOR NI/DY/SE2N/SE2R200M
24	* CE05010184	CONDENSADOR 35MF 1,5 HP	27	* SE200TR0300IE2	MOTOR IE2 NI/DY/SE2N/SE2R200T
24	* CE05010260	CONDENSADOR 45 MF. 2 CV.	27	* SE300MR0300	MOTOR NI/DY/SE2N/SE2R300M
25	* CE05010057	CAJA CONEXIONES COMPLETA II	27	* SE300TR0300IE2	MOTOR IE2 NI/DY/SE2N/SE2R300T

CODIGO **BP050M, BP050T, BP075M, BP075T, BP100M, BP100T, BP150M, BP150T, BP200M, BP200T, BP300M, BP300T**

DESCRIPCION: BOMBA BURDEOS

OBSERVACIONES

POS	CODIGO	OBSERVACIONES
10	* CE05010067	PARA: BP050M, BP050T, BP075M, BP075T, BP100M, BP100T
10	* CE05010068	PARA: BP150M, BP150T, BP200M, BP200T
10	* CE05010069	PARA: BP300M, BP300T
11	* CE05010410	PARA: BP050M, BP050T, BP075M, BP075T, BP100M, BP100T
11	* CE05010070	PARA: BP150M, BP150T, BP200M, BP200T, BP300M, BP300T
13	* CE05010196	PARA: BP050M, BP050T
13	* CE05010197	PARA: BP075M, BP075T
13	* CE05010198	PARA: BP100M, BP100T
13	* CE05010199	PARA: BP150M, BP150T
13	* CE05010200	PARA: BP200M, BP200T
13	* CE05010235	PARA: BP300M, BP300T
16	* CE05010081	PARA: BP050M, BP050T, BP075M, BP075T, BP100M, BP100T
16	* CE05010082	PARA: BP150M, BP150T, BP200M, BP200T, BP300M, BP300T
18	* CE05010047	PARA: BP050M, BP050T, BP075M, BP075T, BP100M, BP100T
18	* CE05010547	PARA: BP150M, BP150T
18	* CE05010548	PARA: BP200M, BP200T, BP300M, BP300T
19	* CE05010242	PARA: BP050M, BP050T, BP075M, BP075T, BP100M, BP100T
19	* CE05010549	PARA: BP150M, BP150T
19	* CE05010550	PARA: BP200M, BP200T, BP300M, BP300T
20	* CE05010248	PARA: BP050M, BP050T, BP075M, BP075T, BP100M, BP100T
20	* CE05012035	PARA: BP150M, BP150T
20	* CE05010250	PARA: BP200M, BP200T, BP300M, BP300T
21	* CE05010050	PARA: BP050M, BP050T, BP075M, BP075T, BP100M, BP100T
21	* CE05010246	PARA: BP150M, BP150T
21	* CE05010247	PARA: BP200M, BP200T, BP300M, BP300T
22	* CE05010052	PARA: BP050M, BP050T, BP075M, BP075T, BP100M, BP100T
22	* CE05010551	PARA: BP150M, BP150T
22	* CE05010552	PARA: BP200M, BP200T, BP300M, BP300T
23	* CE05010056	PARA: BP050M, BP050T, BP075M, BP075T, BP100M, BP100T
23	* CE05010258	PARA: BP150M, BP150T
23	* CE05010259	PARA: BP200M, BP200T, BP300M, BP300T
24	* CE05010059	PARA: BP050M
24	* CE05010060	PARA: BP075M, BP100M
24	* CE05010184	PARA: BP150M, BP300M
24	* CE05010260	PARA: BP200M
25	* CE05010057	PARA: BP050M, BP075M, BP100M
25	* CE05010058	PARA: BP050T, BP075T, BP100T
25	* CE05010261	PARA: BP150M, BP200M, BP300M
25	* CE05010190	PARA: BP150T, BP200T, BP300T
26	* CE05010254	PARA: BP050M, BP050T, BP075M, BP075T, BP100M, BP100T
26	* CE05010255	PARA: BP150M, BP150T
26	* CE05010256	PARA: BP200M, BP200T
26	* CE05010726	PARA: BP300M, BP300T

*** NOTA OBSERVACIONES**

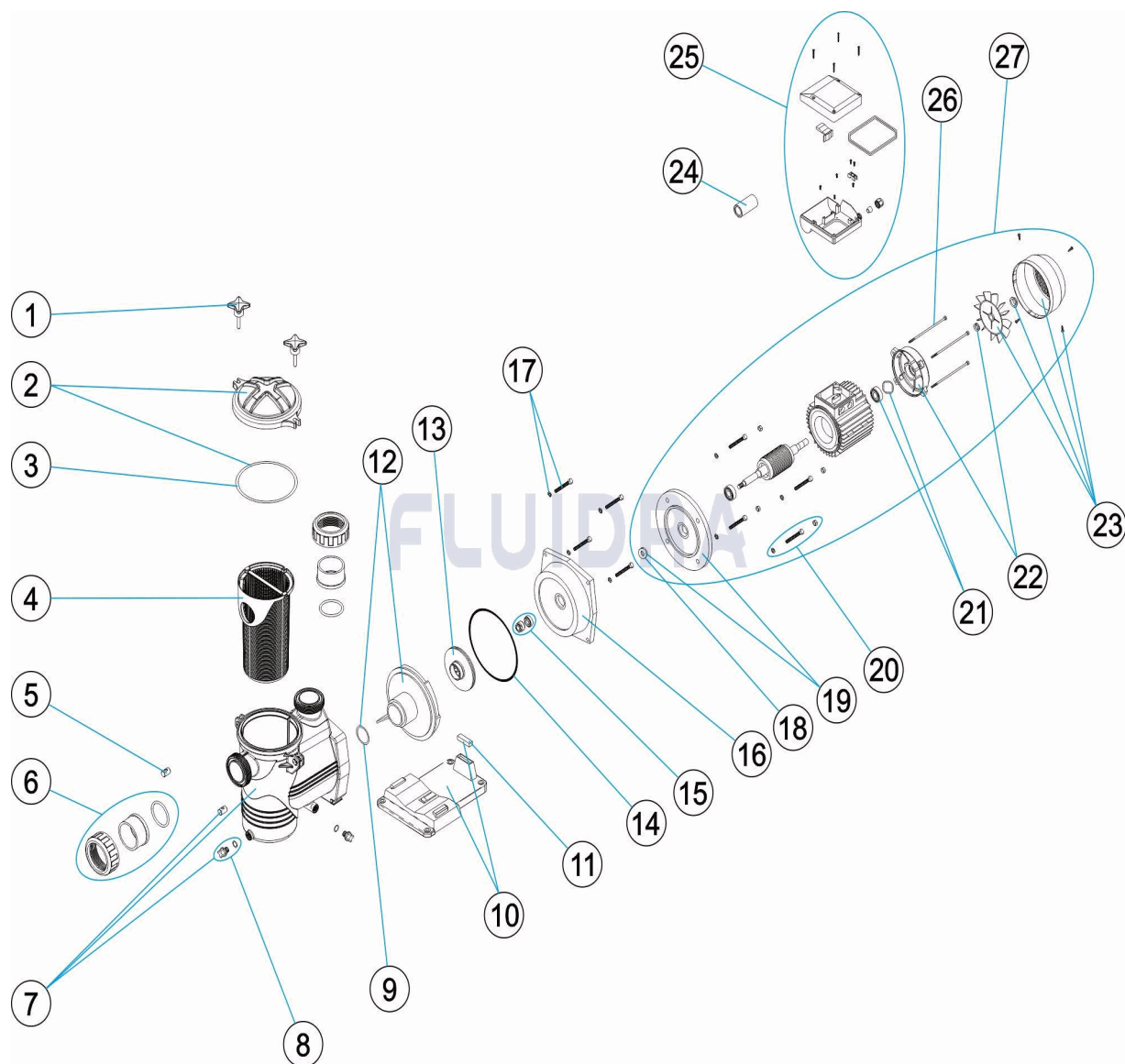
CODIGO **BP050M, BP050T, BP075M, BP075T, BP100M, BP100T, BP150M, BP150T, BP200M, BP200T, BP300M, BP300T**

DESCRIPCION: BOMBA BURDEOS

27	* SE050MR0300	PARA: BP050M
27	* SE050TR0300	PARA: BP050T
27	* SE075MR0300	PARA: BP075M
27	* SE075TR0300	PARA: BP075T
27	* SE100MR0300	PARA: BP100M
27	* SE100TR0300IE2	PARA: BP100T
27	* SE150MR0300	PARA: BP150M
27	* SE150TR0300IE2	PARA: BP150T
27	* SE200MR0300	PARA: BP200M
27	* SE200TR0300IE2	PARA: BP200T
27	* SE300MR0300	PARA: BP300M
27	* SE300TR0300IE2	PARA: BP300T

CODE **BP050M, BP050T, BP075M, BP075T, BP100M, BP100T, BP150M, BP150T, BP200M, BP200T, BP300M, BP300T**

DESCRIPTION: **POMPE BURDEOS**



FRANCAIS

POS	CODE	DESCRIPTION	QUANTITE	POS	CODE	DESCRIPTION	QUANTITE
1	CE05010725	FERMETURE PREFILTRE		13	* CE05010196	TURBINE 0,5 CV	
2	CE05010542	COUVERCLE PRÉFILTRE		13	* CE05010197	TURBINE 0,75 CV	
3	CE05010543	JOINT COVERCLE PRÉFILTRE		13	* CE05010198	TURBINE 1 CV	
4	CE05010191	PANIER PRÉFILTRE		13	* CE05010199	TURBINE 1,5 CV	
5	CE05010066	GOUJON BASCULANT		13	* CE05010200	TURBINE 2 CV	
6	CE05010192	ENS. SORTIE ENTRÉE POMPE		13	* CE05010235	TURBINE 3 CV	
7	CE05010544	CORPS POMPE		14	CE05010240	JOINT CORPS	
8	CE04121107	BOUCHON 1/4' DE VANNE		15	CE05010118	GARNITURE MÉCANIQUE	
9	CE05010072	JOINT TORIQUE		16	* CE05010081	BRIDE SUPPORT MOTEUR 0,5 / 0,75 / 1 HP	
10	* CE05010067	SOCLE POMPE (0,5 A 2HP)		16	* CE05010082	BRIDE SUPPORT MOTEUR 1,5 / 2 / 3 HP	
10	* CE05010068	SOCLE POMPE (2 HP)		17	CE05010071	VIS MOTEUR	
10	* CE05010069	SOCLE POMPE (3 HP)		18	* CE05010047	RONDELLE BRISE EAU	

*** VOIR FICHE D'OBSERVATIONS**

CODE **BP050M, BP050T, BP075M, BP075T, BP100M, BP100T, BP150M, BP150T, BP200M, BP200T, BP300M, BP300T**

DESCRIPTION: **POMPE BURDEOS**

11	* CE05010410	SILENT-BLOCK (9X45X13)	18	* CE05010547	RONDELLE BRISE EAU 1,5 CV
11	* CE05010070	SILENT-BLOCK 2 / 3 HP	18	* CE05010548	RONDELLE BRISE EAU 2-3 CV.
12	CE05010073	DIFFUSEUR	19	* CE05010242	COUVERCLE MOTEUR AVANT 0,5-1 CV
19	* CE05010549	FLASQUE ACCOUP. MOTEUR 1,5 CV.	25	* CE05010058	BOTILLER DE CONNECTIONS III
19	* CE05010550	FLASQUE ACCOUP. MOTEUR 2-3 CV.	25	* CE05010261	BOTILLER DE CONNECTIONS 1,5-3 CV. II
20	* CE05010248	VIS FIXATION MOTEUR 0,5-1 CV	25	* CE05010190	BOTILLER DE CONNECTIONS 1,5-3 CV. III
20	* CE05012035	VIS FIXATION BRIDE C.71	26	* CE05010254	GOUJON MOTEUR 0,5-1 CV
20	* CE05010250	VIS FIXATION MOTEUR 2-3 CV.	26	* CE05010255	GOUJON MOTEUR 1.5 CV
21	* CE05010050	ROULEMENT MOTEUR	26	* CE05010256	GOUJON MOTEUR 2 CV
21	* CE05010246	ROULEMENT 1,5 CV	26	* CE05010726	GOUJON MOTEUR 3 CV
21	* CE05010247	ROULEMENT 2-3 CV	27	* SE050MR0300	MOTEUR NI/DY/SE2N/SE2R050M
22	* CE05010052	COUVERCLE ARRIÈRE MOTEUR 1/2-3/41 t	27	* SE050TR0300	MOTEUR NI/DY/SE2N/SE2R050T
22	* CE05010551	COUVERCLE MEMBRANE 1,5 CV	27	* SE075MR0300	MOTEUR NI/DY/SE2N/SE2R075M
22	* CE05010552	COUVERCLE MEMBRANE 2-3 CV	27	* SE075TR0300	MOTEUR NI/DY/SE2N/SE2R075T
23	* CE05010056	ENSEMBLE VENTILATEUR + COUVERCLE I	27	* SE100MR0300	MOTEUR NI/DY/SE2N/SE2R100M
23	* CE05010258	CAPOT VENTILATEUR + VENTILATEUR 1,5	27	* SE100TR0300IE2	MOTEUR IE2 NI/DY/SE2N/SE2R100T
23	* CE05010259	CAPOT VENTILATEUR + VENTILATEUR 2-3	27	* SE150MR0300	MOTEUR NI/DY/SE2N/SE2R150M
24	* CE05010059	CONDENSATEUR 12 UF 0,33 / 0,50 HP.	27	* SE150TR0300IE2	MOTEUR IE2 NI/DY/SE2N/SE2R150T
24	* CE05010060	CONDENSATEUR 20 UF 0,75 / 1 / 1,5 HP.	27	* SE200MR0300	MOTEUR NI/DY/SE2N/SE2R200M
24	* CE05010184	CONDENSATEUR 35MF 1,5 HP	27	* SE200TR0300IE2	MOTEUR IE2 NI/DY/SE2N/SE2R200T
24	* CE05010260	CONDENSATEUR 45 UF	27	* SE300MR0300	MOTEUR NI/DY/SE2N/SE2R300M
25	* CE05010057	BOTILLER DE CONNECTIONS II	27	* SE300TR0300IE2	MOTEUR IE2 NI/DY/SE2N/SE2R300T

CODE **BP050M, BP050T, BP075M, BP075T, BP100M, BP100T, BP150M, BP150T, BP200M, BP200T, BP300M, BP300T**

DESCRIPTION: **POMPE BURDEOS**

OBSERVATIONS

POS	CODE	OBSERVATIONS
10	* CE05010067	POUR: BP050M, BP050T, BP075M, BP075T, BP100M, BP100T
10	* CE05010068	POUR: BP150M, BP150T, BP200M, BP200T
10	* CE05010069	POUR: BP300M, BP300T
11	* CE05010410	POUR: BP050M, BP050T, BP075M, BP075T, BP100M, BP100T
11	* CE05010070	POUR: BP150M, BP150T, BP200M, BP200T, BP300M, BP300T
13	* CE05010196	POUR: BP050M, BP050T
13	* CE05010197	POUR: BP075M, BP075T
13	* CE05010198	POUR: BP100M, BP100T
13	* CE05010199	POUR: BP150M, BP150T
13	* CE05010200	POUR: BP200M, BP200T
13	* CE05010235	POUR: BP300M, BP300T
16	* CE05010081	POUR: BP050M, BP050T, BP075M, BP075T, BP100M, BP100T
16	* CE05010082	POUR: BP150M, BP150T, BP200M, BP200T, BP300M, BP300T
18	* CE05010047	POUR: BP050M, BP050T, BP075M, BP075T, BP100M, BP100T
18	* CE05010547	POUR: BP150M, BP150T
18	* CE05010548	POUR: BP200M, BP200T, BP300M, BP300T
19	* CE05010242	POUR: BP050M, BP050T, BP075M, BP075T, BP100M, BP100T
19	* CE05010549	POUR: BP150M, BP150T
19	* CE05010550	POUR: BP200M, BP200T, BP300M, BP300T
20	* CE05010248	POUR: BP050M, BP050T, BP075M, BP075T, BP100M, BP100T
20	* CE05012035	POUR: BP150M, BP150T
20	* CE05010250	POUR: BP200M, BP200T, BP300M, BP300T
21	* CE05010050	POUR: BP050M, BP050T, BP075M, BP075T, BP100M, BP100T
21	* CE05010246	POUR: BP150M, BP150T
21	* CE05010247	POUR: BP200M, BP200T, BP300M, BP300T
22	* CE05010052	POUR: BP050M, BP050T, BP075M, BP075T, BP100M, BP100T
22	* CE05010551	POUR: BP150M, BP150T
22	* CE05010552	POUR: BP200M, BP200T, BP300M, BP300T
23	* CE05010056	POUR: BP050M, BP050T, BP075M, BP075T, BP100M, BP100T
23	* CE05010258	POUR: BP150M, BP150T
23	* CE05010259	POUR: BP200M, BP200T, BP300M, BP300T
24	* CE05010059	POUR: BP050M
24	* CE05010060	POUR: BP075M, BP100M
24	* CE05010184	POUR: BP150M, BP300M
24	* CE05010260	POUR: BP200M
25	* CE05010057	POUR: BP050M, BP075M, BP100M
25	* CE05010058	POUR: BP050T, BP075T, BP100T
25	* CE05010261	POUR: BP150M, BP200M, BP300M
25	* CE05010190	POUR: BP150T, BP200T, BP300T
26	* CE05010254	POUR: BP050M, BP050T, BP075M, BP075T, BP100M, BP100T
26	* CE05010255	POUR: BP150M, BP150T
26	* CE05010256	POUR: BP200M, BP200T
26	* CE05010726	POUR: BP300M, BP300T

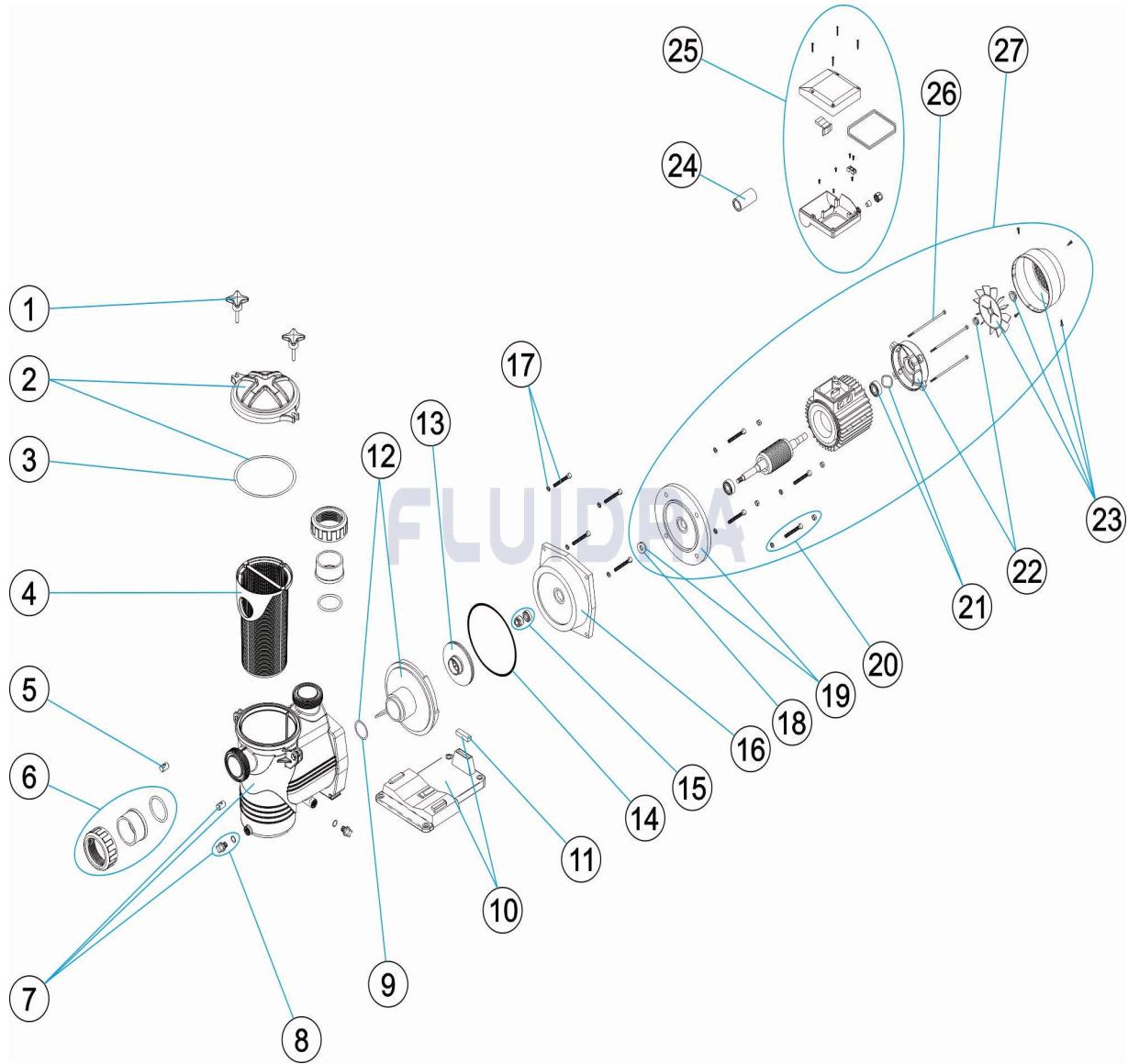
CODE **BP050M, BP050T, BP075M, BP075T, BP100M, BP100T, BP150M, BP150T,
BP200M, BP200T, BP300M, BP300T**

DESCRIPTION: **POMPE BURDEOS**

27	* SE050MR0300	POUR: BP050M
27	* SE050TR0300	POUR: BP050T
27	* SE075MR0300	POUR: BP075M
27	* SE075TR0300	POUR: BP075T
27	* SE100MR0300	POUR: BP100M
27	* SE100TR0300IE2	POUR: BP100T
27	* SE150MR0300	POUR: BP150M
27	* SE150TR0300IE2	POUR: BP150T
27	* SE200MR0300	POUR: BP200M
27	* SE200TR0300IE2	POUR: BP200T
27	* SE300MR0300	POUR: BP300M
27	* SE300TR0300IE2	POUR: BP300T

CODE **BP050M, BP050T, BP075M, BP075T, BP100M, BP100T, BP150M, BP150T, BP200M, BP200T, BP300M, BP300T**

DESCRIPTION: **BURDEOS PUMP**



ENGLISH

POS	CODE	DESCRIPTION	QUANTITY	POS	CODE	DESCRIPTION	QUANTITY
1	CE05010725	PRE-FILTER CLOSURE		13	* CE05010196	IMPELLER 0,5 CV	
2	CE05010542	PRE-FILTER COVER		13	* CE05010197	IMPELLER 0,75 CV	
3	CE05010543	PREFILTRO COVER JOINT		13	* CE05010198	IMPELLER 1 CV	
4	CE05010191	PRE-FILTER BASKET		13	* CE05010199	IMPELLER 1,5 CV	
5	CE05010066	SWIVEL PIN		13	* CE05010200	IMPELLER 2 CV	
6	CE05010192	PUMP EXIT ENTRANCE SET		13	* CE05010235	IMPELLER 3 CV	
7	CE05010544	PUMP HOUSING		14	CE05010240	BODY GASKET	
8	CE04121107	PLUG 1/4"		15	CE05010118	MECHANICAL SEAL	
9	CE05010072	O' RING		16	* CE05010081	MOTOR BRIDLE 0,5 / 0,75 / 1 HP	
10	* CE05010067	PUMP BASE (0,5 A 2 HP)		16	* CE05010082	MOTOR BRIDLE 1,5 / 2 / 3 HP	
10	* CE05010068	PUMP BASE (2 HP)		17	CE05010071	MOTOR SCREW	
10	* CE05010069	PUMP BASE (3 HP)		18	* CE05010047	BREAKWATER WASHER	

CODE **BP050M, BP050T, BP075M, BP075T, BP100M, BP100T, BP150M, BP150T, BP200M, BP200T, BP300M, BP300T**

DESCRIPTION: **BURDEOS PUMP**

11	* CE05010410	SILENTBLOCK (9X45X13)	18	* CE05010547	BREAKWATER WASHER1,5 CV
11	* CE05010070	SILENTBLOCK 2 / 3 HP	18	* CE05010548	BREAKWATER WASHER 2-3 CV.
12	CE05010073	DIFFUSER	19	* CE05010242	0.5-1 CV FRONT MOTOR COVER
19	* CE05010549	MOTOR CLAMP 1,5 CV.	25	* CE05010058	TERMINAL BOX III
19	* CE05010550	MOTOR CLAMP 2-3 CV.	25	* CE05010261	TERMINAL BOX 1,5-3 CV. II
20	* CE05010248	0.5-1 CV MOTOR FIXING SCREWS	25	* CE05010190	TERMINAL BOX 1,5-3 CV. III
20	* CE05012035	SCREWS FIXING DIVING BRIDLE C.71	26	* CE05010254	0.5-1 CV MOTOR STUD
20	* CE05010250	2-3 CV. MOTOR FIXING SCREWS	26	* CE05010255	1.5 CV MOTOR STUD
21	* CE05010050	MOTOR BEARINGS	26	* CE05010256	2 CV MOTOR STUD
21	* CE05010246	BEARING 1,5 CV	26	* CE05010726	3 CV MOTOR STUD
21	* CE05010247	BEARING 2-3 CV	27	* SE050MR0300	MOTOR NI/DY/SE2N/SE2R050M
22	* CE05010052	REAR MOTOR COVER 1/2-3/41 HP	27	* SE050TR0300	MOTOR NI/DY/SE2N/SE2R050T
22	* CE05010551	MEMBRANE COVER SET 1,5 CV	27	* SE075MR0300	MOTOR NI/DY/SE2N/SE2R075M
22	* CE05010552	MEMBRANE COVER SET 2-3 CV	27	* SE075TR0300	MOTOR NI/DY/SE2N/SE2R075T
23	* CE05010056	FAN + COVER ASSEMBLY FOR 0,75 / 1 / 1,5	27	* SE100MR0300	MOTOR NI/DY/SE2N/SE2R100M
23	* CE05010258	FAN COVER + FAN 1,5 CV	27	* SE100TR0300IE2	MOTOR IE2 NI/DY/SE2N/SE2R100T
23	* CE05010259	FAN COVER + FAN 2-3 CV	27	* SE150MR0300	MOTOR NI/DY/SE2N/SE2R150M
24	* CE05010059	CONDENSER 12 UF 0,33 / 0,50 HP.	27	* SE150TR0300IE2	MOTOR IE2 NI/DY/SE2N/SE2R150T
24	* CE05010060	CONDENSER 20 UF 0,75 / 1 / 1,5 HP.	27	* SE200MR0300	MOTOR NI/DY/SE2N/SE2R200M
24	* CE05010184	CONDENSER 35MF 1,5 HP	27	* SE200TR0300IE2	MOTOR IE2 NI/DY/SE2N/SE2R200T
24	* CE05010260	CONDENSER 45 UF	27	* SE300MR0300	MOTOR NI/DY/SE2N/SE2R300M
25	* CE05010057	TERMINAL BOX II	27	* SE300TR0300IE2	MOTOR IE2 NI/DY/SE2N/SE2R300T

CODE **BP050M, BP050T, BP075M, BP075T, BP100M, BP100T, BP150M, BP150T, BP200M, BP200T, BP300M, BP300T**

DESCRIPTION: **BURDEOS PUMP**

OBSERVATIONS

POS	CODE	OBSERVATIONS
10	* CE05010067	FOR: BP050M, BP050T, BP075M, BP075T, BP100M, BP100T
10	* CE05010068	FOR: BP150M, BP150T, BP200M, BP200T
10	* CE05010069	FOR: BP300M, BP300T
11	* CE05010410	FOR: BP050M, BP050T, BP075M, BP075T, BP100M, BP100T
11	* CE05010070	FOR: BP150M, BP150T, BP200M, BP200T, BP300M, BP300T
13	* CE05010196	FOR: BP050M, BP050T
13	* CE05010197	FOR: BP075M, BP075T
13	* CE05010198	FOR: BP100M, BP100T
13	* CE05010199	FOR: BP150M, BP150T
13	* CE05010200	FOR: BP200M, BP200T
13	* CE05010235	FOR: BP300M, BP300T
16	* CE05010081	FOR: BP050M, BP050T, BP075M, BP075T, BP100M, BP100T
16	* CE05010082	FOR: BP150M, BP150T, BP200M, BP200T, BP300M, BP300T
18	* CE05010047	FOR: BP050M, BP050T, BP075M, BP075T, BP100M, BP100T
18	* CE05010547	FOR: BP150M, BP150T
18	* CE05010548	FOR: BP200M, BP200T, BP300M, BP300T
19	* CE05010242	FOR: BP050M, BP050T, BP075M, BP075T, BP100M, BP100T
19	* CE05010549	FOR: BP150M, BP150T
19	* CE05010550	FOR: BP200M, BP200T, BP300M, BP300T
20	* CE05010248	FOR: BP050M, BP050T, BP075M, BP075T, BP100M, BP100T
20	* CE05012035	FOR: BP150M, BP150T
20	* CE05010250	FOR: BP200M, BP200T, BP300M, BP300T
21	* CE05010050	FOR: BP050M, BP050T, BP075M, BP075T, BP100M, BP100T
21	* CE05010246	FOR: BP150M, BP150T
21	* CE05010247	FOR: BP200M, BP200T, BP300M, BP300T
22	* CE05010052	FOR: BP050M, BP050T, BP075M, BP075T, BP100M, BP100T
22	* CE05010551	FOR: BP150M, BP150T
22	* CE05010552	FOR: BP200M, BP200T, BP300M, BP300T
23	* CE05010056	FOR: BP050M, BP050T, BP075M, BP075T, BP100M, BP100T
23	* CE05010258	FOR: BP150M, BP150T
23	* CE05010259	FOR: BP200M, BP200T, BP300M, BP300T
24	* CE05010059	FOR: BP050M
24	* CE05010060	FOR: BP075M, BP100M
24	* CE05010184	FOR: BP150M, BP300M
24	* CE05010260	FOR: BP200M
25	* CE05010057	FOR: BP050M, BP075M, BP100M
25	* CE05010058	FOR: BP050T, BP075T, BP100T
25	* CE05010261	FOR: BP150M, BP200M, BP300M
25	* CE05010190	FOR: BP150T, BP200T, BP300T
26	* CE05010254	FOR: BP050M, BP050T, BP075M, BP075T, BP100M, BP100T
26	* CE05010255	FOR: BP150M, BP150T
26	* CE05010256	FOR: BP200M, BP200T
26	* CE05010726	FOR: BP300M, BP300T

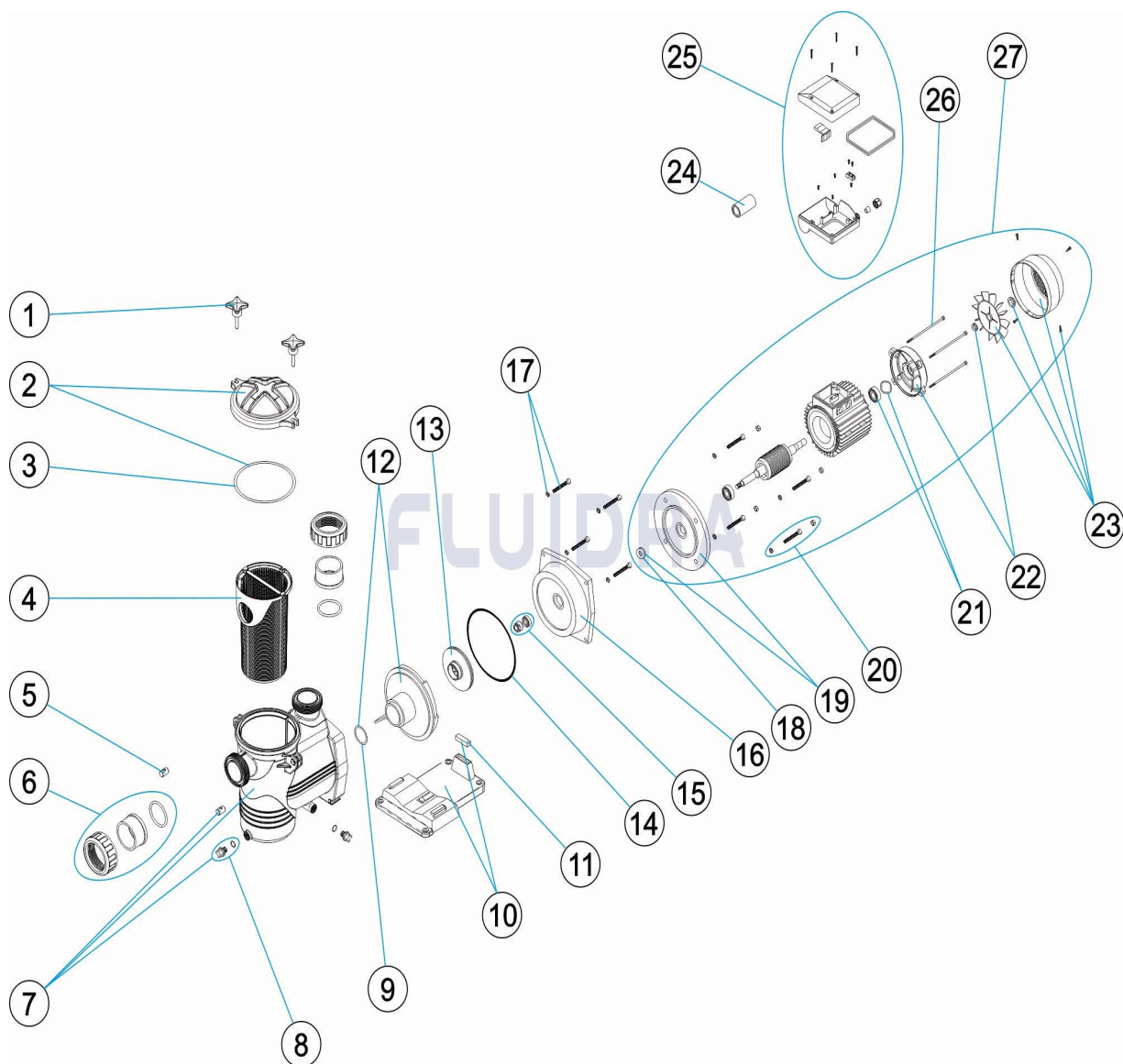
CODE **BP050M, BP050T, BP075M, BP075T, BP100M, BP100T, BP150M, BP150T,
BP200M, BP200T, BP300M, BP300T**

DESCRIPTION: **BURDEOS PUMP**

27	* SE050MR0300	FOR: BP050M
27	* SE050TR0300	FOR: BP050T
27	* SE075MR0300	FOR: BP075M
27	* SE075TR0300	FOR: BP075T
27	* SE100MR0300	FOR: BP100M
27	* SE100TR0300IE2	FOR: BP100T
27	* SE150MR0300	FOR: BP150M
27	* SE150TR0300IE2	FOR: BP150T
27	* SE200MR0300	FOR: BP200M
27	* SE200TR0300IE2	FOR: BP200T
27	* SE300MR0300	FOR: BP300M
27	* SE300TR0300IE2	FOR: BP300T

CODICE **BP050M, BP050T, BP075M, BP075T, BP100M, BP100T, BP150M, BP150T, BP200M, BP200T, BP300M, BP300T**

DESCRIZIONE: **POMPA BURDEOS**



ITALIANO

POS	CODICE	DESCRIZIONE	QUANTITA'	POS	CODICE	DESCRIZIONE	QUANTITA'
1	CE05010725	CHIUSURA PREFILTRO		13	* CE05010196	TURBINA 0,5 CV	
2	CE05010542	COPERCHIO PREFILTRO		13	* CE05010197	TURBINA 0,75 CV	
3	CE05010543	GUARNICIONE COPERCHIO PRE-FILTRO		13	* CE05010198	TURBINA 1 CV	
4	CE05010191	CESTO PREFILTRO		13	* CE05010199	TURBINA 1,5 CV	
5	CE05010066	PERNO BASCULANTE		13	* CE05010200	TURBINA 2 CV	
6	CE05010192	CONGIUNTO USCITA ENTRATA POMPA		13	* CE05010235	TURBINA 3 CV	
7	CE05010544	CORPO POMPA		14	CE05010240	GUARNIZIONE CORPO	
8	CE04121107	COPERCHIO 1/4' VALVOLA		15	CE05010118	GUARNIZIONE MECCANICA	
9	CE05010072	O-RING		16	* CE05010081	FLANGIA SUPPORTO MOTORE 0,5 / 0,75 / 1	
10	* CE05010067	PIEDE POMPA (0,5 A 2 HP)		16	* CE05010082	FLANGIA SUPPORTO MOTORE 1,5 / 2 / 3 HF	
10	* CE05010068	PIEDE POMPA (2 HP)		17	CE05010071	VITE MOTORE	
10	* CE05010069	PIEDE POMPA (3 HP)		18	* CE05010047	RONDELLA	

*** SI FACCIA RIFERIMENTO AL FOGLIO DELLE OSSERVAZIONI**

CODICE **BP050M, BP050T, BP075M, BP075T, BP100M, BP100T, BP150M, BP150T, BP200M, BP200T, BP300M, BP300T**

DESCRIZIONE: POMPA BURDEOS

11	* CE05010410	SILENTBLOC (9X45X13)	18	* CE05010547	RONDELLA 1,5 CV
11	* CE05010070	SILENTBLOC 2 / 3 HP	18	* CE05010548	RONDELLA 2-3 CV.
12	CE05010073	DIFFUSORE	19	* CE05010242	COPERCHIO ANTERIORE MOTORE 0,5-1 CV
19	* CE05010549	FLANGIA MOTORE 1,5 CV.	25	* CE05010058	COPERCHIO MORSETTIERA III
19	* CE05010550	FLANGIA MOTORE 2-3 CV.	25	* CE05010261	COPERCHIO MORSETTIERA 1,5-3 CV. II
20	* CE05010248	VITI FISSAGGIO MOTORE 0,5-1 CV	25	* CE05010190	COPERCHIO MORSETTIERA 1,5-3 CV. III
20	* CE05012035	VITI FISSAGGIO FLANGIA C.71	26	* CE05010254	BARRA FILETTATA MOTORE 0,5-1 CV
20	* CE05010250	VITI FISSAGGIO MOTORE 2-3 CV.	26	* CE05010255	BARRA FILETTATA MOTORE 1.5 CV
21	* CE05010050	CUSCINETTO MOTORE	26	* CE05010256	BARRA FILETTATA MOTORE 2 CV
21	* CE05010246	CUSCINETTO 1,5 CV	26	* CE05010726	BARRA FILETTATA MOTORE 3 CV
21	* CE05010247	CUSCINETTO 2-3 CV	27	* SE050MR0300	MOTORE NI/DY/SE2N/SE2R050M
22	* CE05010052	COPERCHIO POSTERIORE MOTORE 1/2-3	27	* SE050TR0300	MOTORE NI/DY/SE2N/SE2R050T
22	* CE05010551	CHIUSURA DIAFRAMMA 1,5 CV	27	* SE075MR0300	MOTORE NI/DY/SE2N/SE2R075M
22	* CE05010552	CHIUSURA DIAFRAMMA 2-3 CV	27	* SE075TR0300	MOTORE NI/DY/SE2N/SE2R075T
23	* CE05010056	GRUPPO VENTILATORE + COPERCHIO 0,7	27	* SE100MR0300	MOTORE NI/DY/SE2N/SE2R100M
23	* CE05010258	COPERCHIO VENTILATORE + VENTILATOR	27	* SE100TR0300IE2	MOTORE IE2 NI/DY/SE2N/SE2R100T
23	* CE05010259	COPERCHIO VENTILATORE + VENTILATOR	27	* SE150MR0300	MOTORE NI/DY/SE2N/SE2R150M
24	* CE05010059	CONDENSATORE 12 UF 0,33 / 0,50 HP.	27	* SE150TR0300IE2	MOTORE IE2 NI/DY/SE2N/SE2R150T
24	* CE05010060	CONDENSATORE 20 UF 0,75 / 1 / 1,5 HP.	27	* SE200MR0300	MOTORE NI/DY/SE2N/SE2R200M
24	* CE05010184	CONDENSATORE 35MF 1,5 HP	27	* SE200TR0300IE2	MOTORE IE2 NI/DY/SE2N/SE2R200T
24	* CE05010260	CONDENSATORE 45 UF	27	* SE300MR0300	MOTORE NI/DY/SE2N/SE2R300M
25	* CE05010057	COPERCHIO MORSETTIERA II	27	* SE300TR0300IE2	MOTORE IE2 NI/DY/SE2N/SE2R300T

CODICE **BP050M, BP050T, BP075M, BP075T, BP100M, BP100T, BP150M, BP150T, BP200M, BP200T, BP300M, BP300T**

DESCRIZIONE: POMPA BURDEOS

OSSERVAZIONI

POS	CODICE	OSSERVAZIONI
10	* CE05010067	PER: BP050M, BP050T, BP075M, BP075T, BP100M, BP100T
10	* CE05010068	PER: BP150M, BP150T, BP200M, BP200T
10	* CE05010069	PER: BP300M, BP300T
11	* CE05010410	PER: BP050M, BP050T, BP075M, BP075T, BP100M, BP100T
11	* CE05010070	PER: BP150M, BP150T, BP200M, BP200T, BP300M, BP300T
13	* CE05010196	PER: BP050M, BP050T
13	* CE05010197	PER: BP075M, BP075T
13	* CE05010198	PER: BP100M, BP100T
13	* CE05010199	PER: BP150M, BP150T
13	* CE05010200	PER: BP200M, BP200T
13	* CE05010235	PER: BP300M, BP300T
16	* CE05010081	PER: BP050M, BP050T, BP075M, BP075T, BP100M, BP100T
16	* CE05010082	PER: BP150M, BP150T, BP200M, BP200T, BP300M, BP300T
18	* CE05010047	PER: BP050M, BP050T, BP075M, BP075T, BP100M, BP100T
18	* CE05010547	PER: BP150M, BP150T
18	* CE05010548	PER: BP200M, BP200T, BP300M, BP300T
19	* CE05010242	PER: BP050M, BP050T, BP075M, BP075T, BP100M, BP100T
19	* CE05010549	PER: BP150M, BP150T
19	* CE05010550	PER: BP200M, BP200T, BP300M, BP300T
20	* CE05010248	PER: BP050M, BP050T, BP075M, BP075T, BP100M, BP100T
20	* CE05012035	PER: BP150M, BP150T
20	* CE05010250	PER: BP200M, BP200T, BP300M, BP300T
21	* CE05010050	PER: BP050M, BP050T, BP075M, BP075T, BP100M, BP100T
21	* CE05010246	PER: BP150M, BP150T
21	* CE05010247	PER: BP200M, BP200T, BP300M, BP300T
22	* CE05010052	PER: BP050M, BP050T, BP075M, BP075T, BP100M, BP100T
22	* CE05010551	PER: BP150M, BP150T
22	* CE05010552	PER: BP200M, BP200T, BP300M, BP300T
23	* CE05010056	PER: BP050M, BP050T, BP075M, BP075T, BP100M, BP100T
23	* CE05010258	PER: BP150M, BP150T
23	* CE05010259	PER: BP200M, BP200T, BP300M, BP300T
24	* CE05010059	PER: BP050M
24	* CE05010060	PER: BP075M, BP100M
24	* CE05010184	PER: BP150M, BP300M
24	* CE05010260	PER: BP200M
25	* CE05010057	PER: BP050M, BP075M, BP100M
25	* CE05010058	PER: BP050T, BP075T, BP100T
25	* CE05010261	PER: BP150M, BP200M, BP300M
25	* CE05010190	PER: BP150T, BP200T, BP300T
26	* CE05010254	PER: BP050M, BP050T, BP075M, BP075T, BP100M, BP100T
26	* CE05010255	PER: BP150M, BP150T
26	* CE05010256	PER: BP200M, BP200T
26	* CE05010726	PER: BP300M, BP300T

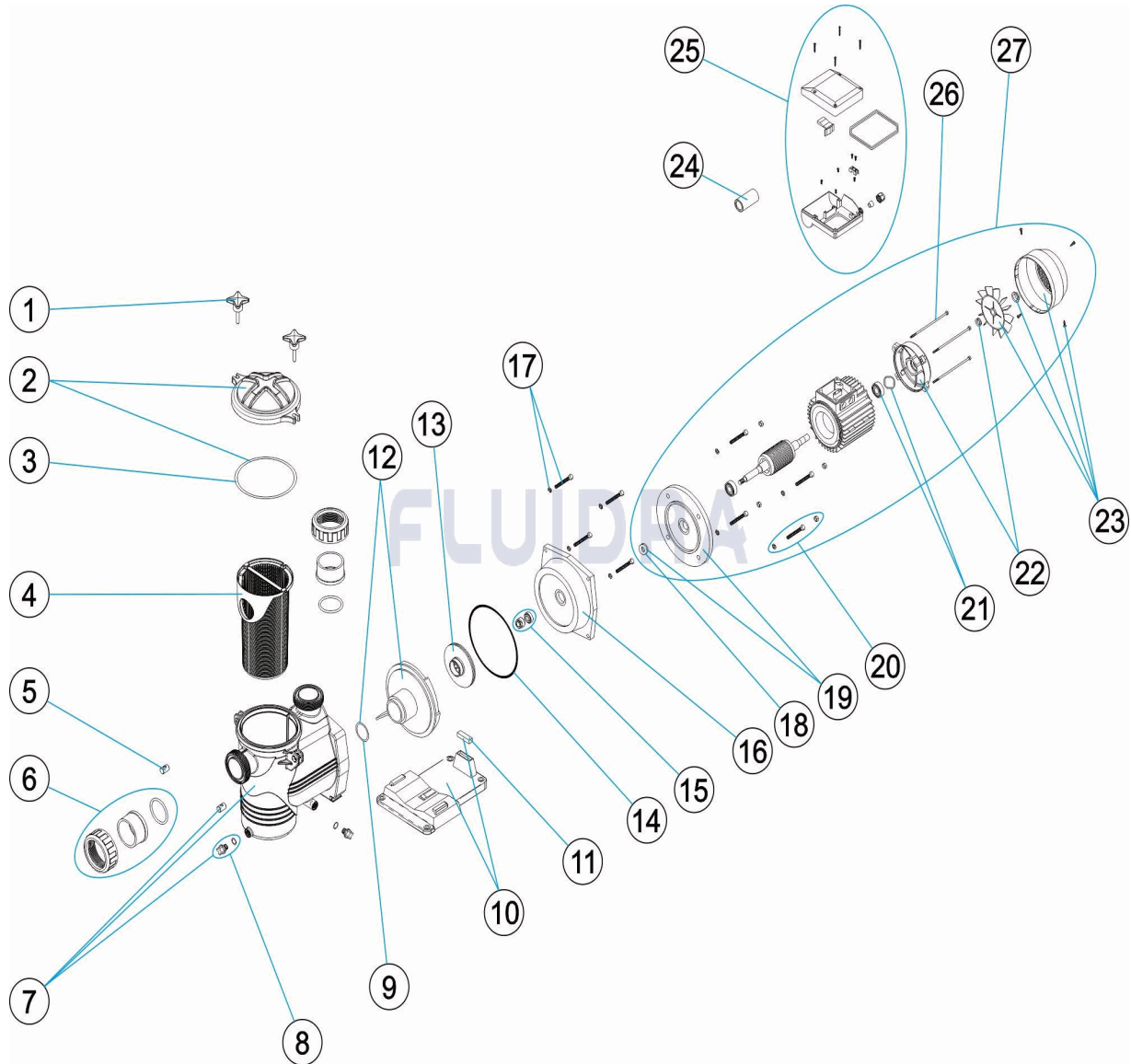
CODICE **BP050M, BP050T, BP075M, BP075T, BP100M, BP100T, BP150M, BP150T, BP200M, BP200T, BP300M, BP300T**

DESCRIZIONE: POMPA BURDEOS

27	* SE050MR0300	PER: BP050M
27	* SE050TR0300	PER: BP050T
27	* SE075MR0300	PER: BP075M
27	* SE075TR0300	PER: BP075T
27	* SE100MR0300	PER: BP100M
27	* SE100TR0300IE2	PER: BP100T
27	* SE150MR0300	PER: BP150M
27	* SE150TR0300IE2	PER: BP150T
27	* SE200MR0300	PER: BP200M
27	* SE200TR0300IE2	PER: BP200T
27	* SE300MR0300	PER: BP300M
27	* SE300TR0300IE2	PER: BP300T

CODE **BP050M, BP050T, BP075M, BP075T, BP100M, BP100T, BP150M, BP150T, BP200M, BP200T, BP300M, BP300T**

BESCHREIBUNG: **PUMPE BURDEOS**



DEUTSCH

POS	CODE	BESCHREIBUNG	MENGE	POS	CODE	BESCHREIBUNG	MENGE
1	CE05010725	SCHLISSVORRICHTUNG VORFILTER		13	* CE05010196	TURBINE 0,5 CV	
2	CE05010542	VORFILTERDECKEL		13	* CE05010197	TURBINE 0,75 CV	
3	CE05010543	DICHTUNG VORFILTERDECKEL		13	* CE05010198	TURBINE 1 CV	
4	CE05010191	VORFILTERKORB		13	* CE05010199	TURBINE 1,5 CV	
5	CE05010066	KIPPSTIFT		13	* CE05010200	TURBINE 2 CV	
6	CE05010192	SET AUSGANG-EINGANG PUMPE		13	* CE05010235	TURBINE 3 CV	
7	CE05010544	PUMPENGEHÄUSE		14	CE05010240	DICHTUNG PUMPENGEHÄUSE	
8	CE04121107	STOPFEN 1/4' VENTIL		15	CE05010118	GLEITRINGDICHTUNG	
9	CE05010072	O-RING WASSERVERTEILER		16	* CE05010081	FLANSCH MOTORHALTERUNG 0,5 / 0,75 / 1	
10	* CE05010067	PUMPENFUSS (0,5 - 2 HP)		16	* CE05010082	FLANSCH MOTORHALTERUNG 1,5 / 2 / 3 HF	
10	* CE05010068	PUMPENFUSS (2 HP)		17	CE05010071	BEFESTIGUNGSSCHRAUBEN GEHÄUSE	
10	* CE05010069	PUMPENFUSS (3 HP)		18	* CE05010047	UNTERLEGSCHIBE WASSERBRECHER	

* SIEHE ANMERKUNGSBLATT

CODE **BP050M, BP050T, BP075M, BP075T, BP100M, BP100T, BP150M, BP150T, BP200M, BP200T, BP300M, BP300T**

BESCHREIBUNG: **PUMPE BURDEOS**

11	* CE05010410	SCHWINGUNGSDÄMPFER (9 X 45 X 13)	18	* CE05010547	UNTERLEGSSCHEIBE WASSERBRECHER 1,!
11	* CE05010070	SCHWINGUNGSDÄMPFER 2 / 3 HP	18	* CE05010548	UNTERLEGSSCHEIBE WASSERBRECHER 2 -
12	CE05010073	WASSERVERTEILER	19	* CE05010242	MOTORDECKEL VORNE 0,5 - 1 CV
19	* CE05010549	MOTORFLANSCH 1,5 CV	25	* CE05010058	ANSCHLUSSGEHÄUSE KOMPLETT III
19	* CE05010550	MOTORFLANSCH 2 - 3 CV	25	* CE05010261	ANSCHLUSSGEHÄUSE KOMPLETT 1,5 - 3 C
20	* CE05010248	FIXIERSCHRAUBEN MOTOR 0,5 - 1 CV	25	* CE05010190	ANSCHLUSSGEHÄUSE KOMPLETT 1,5 - 3 C
20	* CE05012035	FIXIERSCHRAUBEN FLANSCH C.71	26	* CE05010254	BOLZEN MOTOR 0,5 - 1 CV
20	* CE05010250	FIXIERSCHRAUBEN MOTOR 2 - 3 CV	26	* CE05010255	BOLZEN MOTOR 1,5 CV
21	* CE05010050	WÄLZLAGER MOTOR	26	* CE05010256	BOLZEN MOTOR 2 CV
21	* CE05010246	WÄLZLAGER 1,5 CV	26	* CE05010726	BOLZEN MOTOR 3 CV
21	* CE05010247	WÄLZLAGER 2 - 3 CV	27	* SE050MR0300	MOTOR NI/DY/SE2N/SE2R050M
22	* CE05010052	MOTORDECKEL HINTEN 1/2 - 3/41 HP	27	* SE050TR0300	MOTOR NI/DY/SE2N/SE2R050T
22	* CE05010551	MOTORDECKEL 1,5 CV	27	* SE075MR0300	MOTOR NI/DY/SE2N/SE2R075M
22	* CE05010552	MOTORDECKEL 2 - 3 CV	27	* SE075TR0300	MOTOR NI/DY/SE2N/SE2R075T
23	* CE05010056	SET VENTILATOR MIT ABDECKUNG 0,75 / 1	27	* SE100MR0300	MOTOR NI/DY/SE2N/SE2R100M
23	* CE05010258	VENTILATORDECKEL MIT VENTILATOR 1,5	27	* SE100TR0300IE2	MOTOR IE2 NI/DY/SE2N/SE2R100T
23	* CE05010259	VENTILATORDECKEL MIT VENTILATOR 2 -	27	* SE150MR0300	MOTOR NI/DY/SE2N/SE2R150M
24	* CE05010059	KONDENSATOR 12 MF 0,33 / 0,50 CV	27	* SE150TR0300IE2	MOTOR IE2 NI/DY/SE2N/SE2R150T
24	* CE05010060	KONDENSATOR 20 MF 0,75 / 1 / 1,5 CV	27	* SE200MR0300	MOTOR NI/DY/SE2N/SE2R200M
24	* CE05010184	KONDENSATOR 35 MF 1,5 HP	27	* SE200TR0300IE2	MOTOR IE2 NI/DY/SE2N/SE2R200T
24	* CE05010260	KONDENSATOR 45 MF 2 CV	27	* SE300MR0300	MOTOR NI/DY/SE2N/SE2R300M
25	* CE05010057	ANSCHLUSSGEHÄUSE KOMPLETT II	27	* SE300TR0300IE2	MOTOR IE2 NI/DY/SE2N/SE2R300T

CODE **BP050M, BP050T, BP075M, BP075T, BP100M, BP100T, BP150M, BP150T, BP200M, BP200T, BP300M, BP300T**

BESCHREIBUNG: **PUMPE BURDEOS**

HINWEISE

POS	CODE	HINWEISE
10	* CE05010067	FÜR: BP050M, BP050T, BP075M, BP075T, BP100M, BP100T
10	* CE05010068	FÜR: BP150M, BP150T, BP200M, BP200T
10	* CE05010069	FÜR: BP300M, BP300T
11	* CE05010410	FÜR: BP050M, BP050T, BP075M, BP075T, BP100M, BP100T
11	* CE05010070	FÜR: BP150M, BP150T, BP200M, BP200T, BP300M, BP300T
13	* CE05010196	FÜR: BP050M, BP050T
13	* CE05010197	FÜR: BP075M, BP075T
13	* CE05010198	FÜR: BP100M, BP100T
13	* CE05010199	FÜR: BP150M, BP150T
13	* CE05010200	FÜR: BP200M, BP200T
13	* CE05010235	FÜR: BP300M, BP300T
16	* CE05010081	FÜR: BP050M, BP050T, BP075M, BP075T, BP100M, BP100T
16	* CE05010082	FÜR: BP150M, BP150T, BP200M, BP200T, BP300M, BP300T
18	* CE05010047	FÜR: BP050M, BP050T, BP075M, BP075T, BP100M, BP100T
18	* CE05010547	FÜR: BP150M, BP150T
18	* CE05010548	FÜR: BP200M, BP200T, BP300M, BP300T
19	* CE05010242	FÜR: BP050M, BP050T, BP075M, BP075T, BP100M, BP100T
19	* CE05010549	FÜR: BP150M, BP150T
19	* CE05010550	FÜR: BP200M, BP200T, BP300M, BP300T
20	* CE05010248	FÜR: BP050M, BP050T, BP075M, BP075T, BP100M, BP100T
20	* CE05012035	FÜR: BP150M, BP150T
20	* CE05010250	FÜR: BP200M, BP200T, BP300M, BP300T
21	* CE05010050	FÜR: BP050M, BP050T, BP075M, BP075T, BP100M, BP100T
21	* CE05010246	FÜR: BP150M, BP150T
21	* CE05010247	FÜR: BP200M, BP200T, BP300M, BP300T
22	* CE05010052	FÜR: BP050M, BP050T, BP075M, BP075T, BP100M, BP100T
22	* CE05010551	FÜR: BP150M, BP150T
22	* CE05010552	FÜR: BP200M, BP200T, BP300M, BP300T
23	* CE05010056	FÜR: BP050M, BP050T, BP075M, BP075T, BP100M, BP100T
23	* CE05010258	FÜR: BP150M, BP150T
23	* CE05010259	FÜR: BP200M, BP200T, BP300M, BP300T
24	* CE05010059	FÜR: BP050M
24	* CE05010060	FÜR: BP075M, BP100M
24	* CE05010184	FÜR: BP150M, BP300M
24	* CE05010260	FÜR: BP200M
25	* CE05010057	FÜR: BP050M, BP075M, BP100M
25	* CE05010058	FÜR: BP050T, BP075T, BP100T
25	* CE05010261	FÜR: BP150M, BP200M, BP300M
25	* CE05010190	FÜR: BP150T, BP200T, BP300T
26	* CE05010254	FÜR: BP050M, BP050T, BP075M, BP075T, BP100M, BP100T
26	* CE05010255	FÜR: BP150M, BP150T
26	* CE05010256	FÜR: BP200M, BP200T
26	* CE05010726	FÜR: BP300M, BP300T

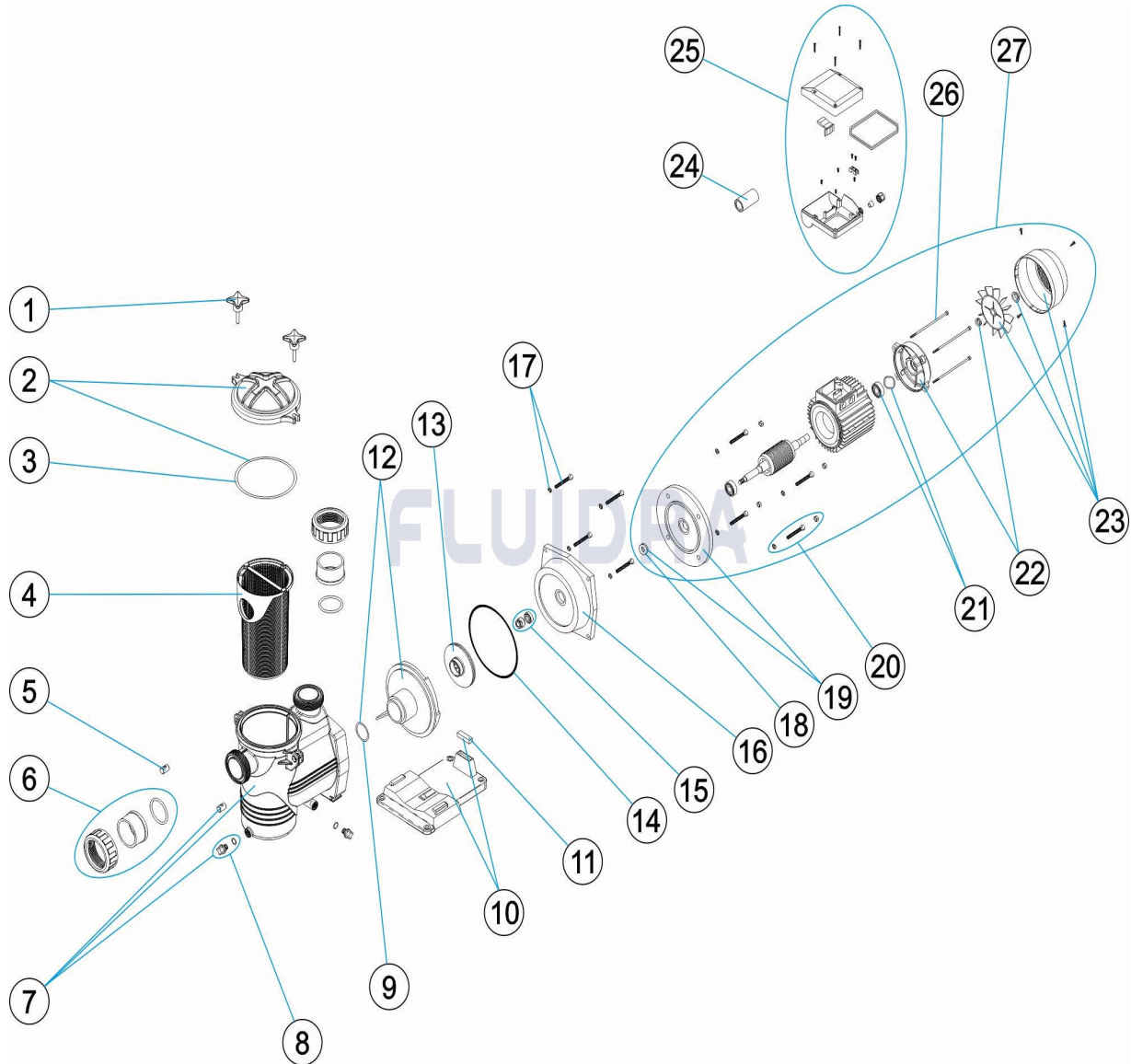
CODE **BP050M, BP050T, BP075M, BP075T, BP100M, BP100T, BP150M, BP150T,
BP200M, BP200T, BP300M, BP300T**

BESCHREIBUNG: **PUMPE BURDEOS**

27	* SE050MR0300	FÜR: BP050M
27	* SE050TR0300	FÜR: BP050T
27	* SE075MR0300	FÜR: BP075M
27	* SE075TR0300	FÜR: BP075T
27	* SE100MR0300	FÜR: BP100M
27	* SE100TR0300IE2	FÜR: BP100T
27	* SE150MR0300	FÜR: BP150M
27	* SE150TR0300IE2	FÜR: BP150T
27	* SE200MR0300	FÜR: BP200M
27	* SE200TR0300IE2	FÜR: BP200T
27	* SE300MR0300	FÜR: BP300M
27	* SE300TR0300IE2	FÜR: BP300T

CODIGO BP050M, BP050T, BP075M, BP075T, BP100M, BP100T, BP150M, BP150T, BP200M, BP200T, BP300M, BP300T

DESCRIÇÃO: BOMBA BURDEOS



PORTUGUES

POS	CODIGO	DESCRIÇÃO	JANTIDADE	POS	CODIGO	DESCRIÇÃO	JANTIDADE
1	CE05010725	FECHO PRÉ-FILTRO		13	* CE05010196	TURBINA 0,5 CV	
2	CE05010542	TAMPA PRÉ-FILTRO		13	* CE05010197	TURBINA 0,75 CV	
3	CE05010543	JUNTA TAMPA PRÉ-FILTRO		13	* CE05010198	TURBINA 1 CV	
4	CE05010191	CESTO PRÉ-FILTRO		13	* CE05010199	TURBINA 1,5 CV	
5	CE05010066	PASSADOR BASCULANTE		13	* CE05010200	TURBINA 2 CV	
6	CE05010192	CJTO. SAÍDA ENTRADA BOMBA		13	* CE05010235	TURBINA 3 CV	
7	CE05010544	CORPO BOMBA		14	CE05010240	JUNTA CORPO	
8	CE04121107	TAMPÃO 1/4' VÁLVULA		15	CE05010118	JUNTA MECÂNICA	
9	CE05010072	JUNTA TÓRICA		16	* CE05010081	FLANGE SUPORTE MOTOR 0,5 / 0,75 / 1 HP	
10	* CE05010067	PÉ BOMBA (0,5 A 2 HP)		16	* CE05010082	FLANGE SUPORTE MOTOR 1,5 / 2 / 3 HP	
10	* CE05010068	PÉ BOMBA (2 HP)		17	CE05010071	PARAFUSO MOTOR	
10	* CE05010069	PÉ BOMBA (3 HP)		18	* CE05010047	ALHETA ROMPE ÁGUAS	

*** VEJA A FICHA DE OBSERVAÇÕES**

CODIGO **BP050M, BP050T, BP075M, BP075T, BP100M, BP100T, BP150M, BP150T, BP200M, BP200T, BP300M, BP300T**

DESCRIÇÃO: BOMBA BURDEOS

11	* CE05010410	SILENT-BLOCK (9X45X13)	18	* CE05010547	ALHETA ROMPE ÁGUAS 1,5 CV
11	* CE05010070	SILENT-BLOCK 2 / 3 HP	18	* CE05010548	ALHETA ROMPE ÁGUAS 2-3 CV.
12	CE05010073	DIFUSOR	19	* CE05010242	TAMPA MOTOR DIANTEIRA 0,5-1 CV.
19	* CE05010549	MANILHA MOTOR 1,5 CV.	25	* CE05010058	CAIXA BORNES III
19	* CE05010550	MANILHA MOTOR 2-3 CV.	25	* CE05010261	CAIXA BORNES 1,5-3 CV. II
20	* CE05010248	PARAFUSOS FIXAÇÃO MOTOR 0,5-1 CV.	25	* CE05010190	CAIXA BORNES 1,5-3 CV. III
20	* CE05012035	PARAFUSOS FIXAÇÃO FLANGE C.71	26	* CE05010254	CAVILHA MOTOR 0,5-1 CV.
20	* CE05010250	PARAFUSOS FIXAÇÃO MOTOR 2-3 CV..	26	* CE05010255	CAVILHA MOTOR 1.5 CV.
21	* CE05010050	ROLAMENTO MOTOR	26	* CE05010256	CAVILHA MOTOR 2 CV.
21	* CE05010246	ROLAMIENTOS 1,5 CV	26	* CE05010726	CAVILHA MOTOR 3 CV.
21	* CE05010247	ROLAMIENTOS 2-3 CV	27	* SE050MR0300	MOTOR NI/DY/SE2N/SE2R050M
22	* CE05010052	TAMPA TRASEIRA MOTOR 1/2-3/41 HP	27	* SE050TR0300	MOTOR NI/DY/SE2N/SE2R050T
22	* CE05010551	TAMPA MEMBRANA 1,5 CV	27	* SE075MR0300	MOTOR NI/DY/SE2N/SE2R075M
22	* CE05010552	TAMPA MEMBRANA 2-3 CV	27	* SE075TR0300	MOTOR NI/DY/SE2N/SE2R075T
23	* CE05010056	CONJUNTO VENTILADOR + TAMPA DE 0,7€	27	* SE100MR0300	MOTOR NI/DY/SE2N/SE2R100M
23	* CE05010258	TAMPA VENTILADOR + VENTILADOR 1,5 C'	27	* SE100TR0300IE2	MOTOR IE2 NI/DY/SE2N/SE2R100T
23	* CE05010259	TAMPA VENTILADOR + VENTILADOR 2-3 C'	27	* SE150MR0300	MOTOR NI/DY/SE2N/SE2R150M
24	* CE05010059	CONDENSADOR 12 UF 0,33 / 0,50 HP.	27	* SE150TR0300IE2	MOTOR IE2 NI/DY/SE2N/SE2R150T
24	* CE05010060	CONDENSADOR 20 UF 0,75 / 1 / 1,5 HP.	27	* SE200MR0300	MOTOR NI/DY/SE2N/SE2R200M
24	* CE05010184	CONDENSADOR 35MF 1,5 HP	27	* SE200TR0300IE2	MOTOR IE2 NI/DY/SE2N/SE2R200T
24	* CE05010260	CONDENSADOR 45 UF	27	* SE300MR0300	MOTOR NI/DY/SE2N/SE2R300M
25	* CE05010057	CAIXA BORNES II	27	* SE300TR0300IE2	MOTOR IE2 NI/DY/SE2N/SE2R300T

CODIGO **BP050M, BP050T, BP075M, BP075T, BP100M, BP100T, BP150M, BP150T, BP200M, BP200T, BP300M, BP300T**

DESCRIÇÃO: BOMBA BURDEOS

OBSERVAÇÕES

POS	CODIGO	OBSERVAÇÕES
10	* CE05010067	PARA: BP050M, BP050T, BP075M, BP075T, BP100M, BP100T
10	* CE05010068	PARA: BP150M, BP150T, BP200M, BP200T
10	* CE05010069	PARA: BP300M, BP300T
11	* CE05010410	PARA: BP050M, BP050T, BP075M, BP075T, BP100M, BP100T
11	* CE05010070	PARA: BP150M, BP150T, BP200M, BP200T, BP300M, BP300T
13	* CE05010196	PARA: BP050M, BP050T
13	* CE05010197	PARA: BP075M, BP075T
13	* CE05010198	PARA: BP100M, BP100T
13	* CE05010199	PARA: BP150M, BP150T
13	* CE05010200	PARA: BP200M, BP200T
13	* CE05010235	PARA: BP300M, BP300T
16	* CE05010081	PARA: BP050M, BP050T, BP075M, BP075T, BP100M, BP100T
16	* CE05010082	PARA: BP150M, BP150T, BP200M, BP200T, BP300M, BP300T
18	* CE05010047	PARA: BP050M, BP050T, BP075M, BP075T, BP100M, BP100T
18	* CE05010547	PARA: BP150M, BP150T
18	* CE05010548	PARA: BP200M, BP200T, BP300M, BP300T
19	* CE05010242	PARA: BP050M, BP050T, BP075M, BP075T, BP100M, BP100T
19	* CE05010549	PARA: BP150M, BP150T
19	* CE05010550	PARA: BP200M, BP200T, BP300M, BP300T
20	* CE05010248	PARA: BP050M, BP050T, BP075M, BP075T, BP100M, BP100T
20	* CE05012035	PARA: BP150M, BP150T
20	* CE05010250	PARA: BP200M, BP200T, BP300M, BP300T
21	* CE05010050	PARA: BP050M, BP050T, BP075M, BP075T, BP100M, BP100T
21	* CE05010246	PARA: BP150M, BP150T
21	* CE05010247	PARA: BP200M, BP200T, BP300M, BP300T
22	* CE05010052	PARA: BP050M, BP050T, BP075M, BP075T, BP100M, BP100T
22	* CE05010551	PARA: BP150M, BP150T
22	* CE05010552	PARA: BP200M, BP200T, BP300M, BP300T
23	* CE05010056	PARA: BP050M, BP050T, BP075M, BP075T, BP100M, BP100T
23	* CE05010258	PARA: BP150M, BP150T
23	* CE05010259	PARA: BP200M, BP200T, BP300M, BP300T
24	* CE05010059	PARA: BP050M
24	* CE05010060	PARA: BP075M, BP100M
24	* CE05010184	PARA: BP150M, BP300M
24	* CE05010260	PARA: BP200M
25	* CE05010057	PARA: BP050M, BP075M, BP100M
25	* CE05010058	PARA: BP050T, BP075T, BP100T
25	* CE05010261	PARA: BP150M, BP200M, BP300M
25	* CE05010190	PARA: BP150T, BP200T, BP300T
26	* CE05010254	PARA: BP050M, BP050T, BP075M, BP075T, BP100M, BP100T
26	* CE05010255	PARA: BP150M, BP150T
26	* CE05010256	PARA: BP200M, BP200T
26	* CE05010726	PARA: BP300M, BP300T

CODIGO **BP050M, BP050T, BP075M, BP075T, BP100M, BP100T, BP150M, BP150T, BP200M, BP200T, BP300M, BP300T**

DESCRIÇÃO: BOMBA BURDEOS

27	* SE050MR0300	PARA: BP050M
27	* SE050TR0300	PARA: BP050T
27	* SE075MR0300	PARA: BP075M
27	* SE075TR0300	PARA: BP075T
27	* SE100MR0300	PARA: BP100M
27	* SE100TR0300IE2	PARA: BP100T
27	* SE150MR0300	PARA: BP150M
27	* SE150TR0300IE2	PARA: BP150T
27	* SE200MR0300	PARA: BP200M
27	* SE200TR0300IE2	PARA: BP200T
27	* SE300MR0300	PARA: BP300M
27	* SE300TR0300IE2	PARA: BP300T