

KIT

REV: 1

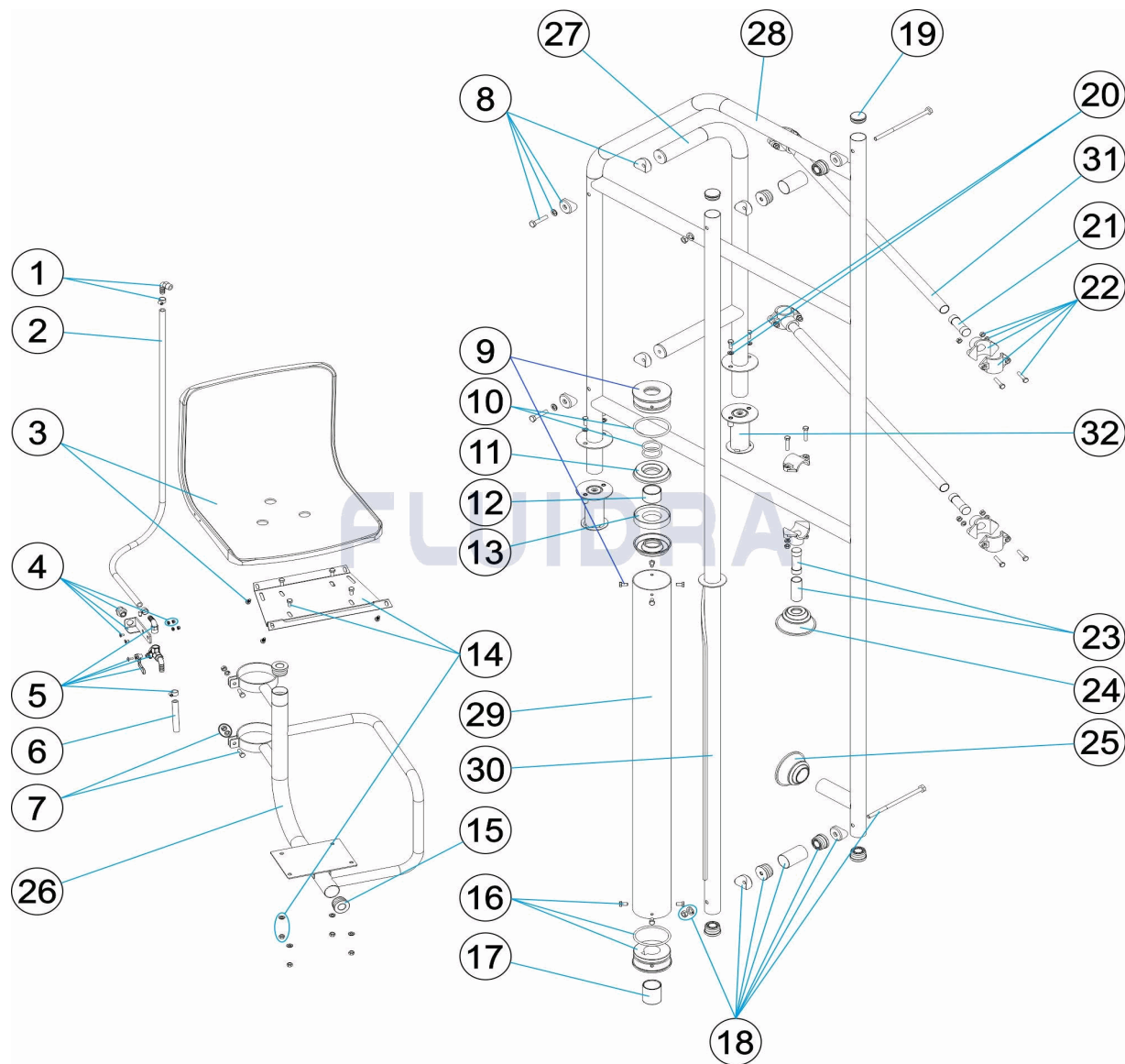
1369

FECHA: 25/11/2020

HOJA: 1/12

CODIGO **M00896, M00902, M00905, M00909**

DESCRIPCION: **ELEVADOR HIDRÁULICO SIN ESCALERA**



ESPAÑOL

POS	CODIGO	DESCRIPCION	CANTIDAD	POS	CODIGO	DESCRIPCION	CANTIDAD
1	4401070005	CODO NORMA 90° 3/8" + BRID "		16	4401011513	CASQUILLO GUIA	
2	4401011514	TUBO ENTRADA 0,9 M		17	4401011512	CASQUILLO DE SEGURIDAD	
3	4401011518	ASIENTO		18	4401011519	CJTO. ENLACE UNION	
4	4401011515	SOPORTE VALVULA		19	4401070208	TAPON D.43	
5	4401011508	VALVULA 3 VIAS COMPLETA		20	4401010008	TORNILLERIA PELDAÑO	
6	4402050122	CONDUCTO ASPIRACION E.C.C.		21	4401140026	TUBO APOYO SUPERIOR	
7	4401140006	TORNILLERIA PLATAFORMA		22	4401011520	BRIDA APOYO	
8	4401140025	ENLACE UNION		23	4401140017	SOPORTE INFERIOR	
9	4401011517	TAPA GUIA SUPERIOR		24	4401011506	TOPE ARTICULADO D.28	
10	4401011501	JUNTAS ELEVADOR		25	4401010501	TOPE ARTICULADO	
11	4401011509	JUNTA ELEVADOR		26	71184R0100	ESTRUCTURA SILLA ELEVADOR	
12	4401011516	APOYO JUNTA		27	71183R0200	SOPORTE PASAMANO	
13	4401011505	CASQUILLO TOPE INFERIOR		28	71183R0100	PASAMANO A-1000	

KIT

REV: 1

1369

FECHA: 25/11/2020

HOJA: 2/12

CODIGO **M00896, M00902, M00905, M00909**DESCRIPCION: **ELEVADOR HIDRÁULICO SIN ESCALERA**

14	4401011507	PLACA ASIENTO	29	11277R0600	CILINDRO ELEVADOR HIDRAULICO
15	4401050402	CASQUILLOS GUIA	30	11277R0100	CONJUNTO TUBO GUIA
31	71183R0730	TRAVESAÑO UNION L-880	32	00143	ANCLAJE FIJACION CON TORNILLOS

ÉCLATÉ

REV.: 1

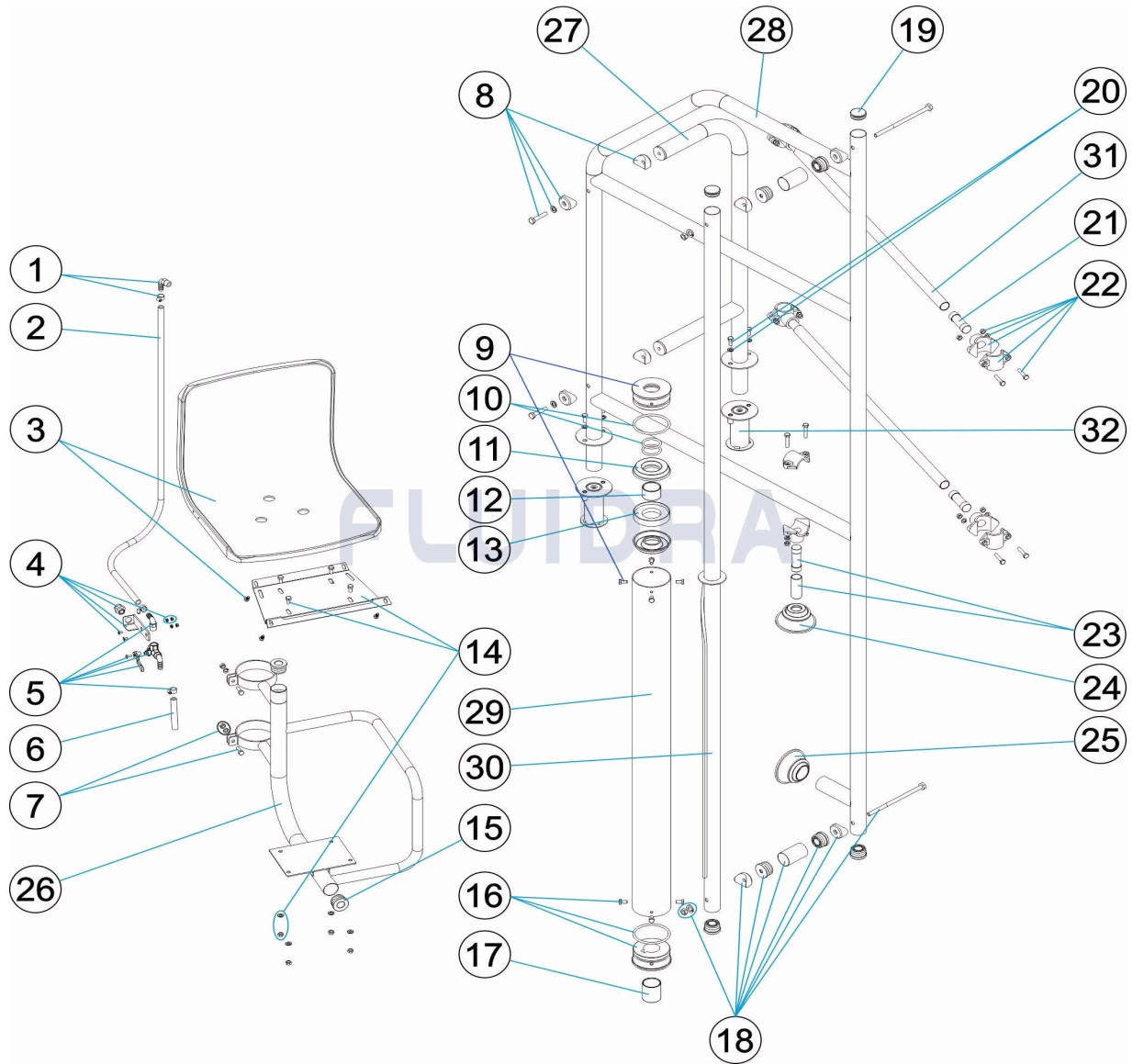
1369

DATE: 25/11/2020

PAG.: 3/12

CODE **M00896, M00902, M00905, M00909**

DESCRIPTION: **ÉLÉVATEUR HYDRAULIQUE SANS ÉCHELLE**



FRANCAIS

POS	CODE	DESCRIPTION	QUANTITE	POS	CODE	DESCRIPTION	QUANTITE
1	4401070005	COUDE NORME 90° 3/8" + BRID "		16	4401011513	DOUILLE GUIDE	
2	4401011514	TUBE ENTRÉE 0,9 M.		17	4401011512	DOUILLE DE SÉCURITÉ	
3	4401011518	SEAT		18	4401011519	ENSEMBLE RACCORD UNION	
4	4401011515	SUPPORT VANNE		19	4401070208	BOUCHON D.43	
5	4401011508	VANNE 3 VOIES COMPLETE		20	4401010008	VISSERIE MARCHE	
6	4402050122	TUYAU D'ASPIRATION		21	4401140026	TUBE DE SUPPORT SUPÉRIEUR	
7	4401140006	VIS PLATE-FORME		22	4401011520	BRIDE DE SUPPORT	
8	4401140025	RACCORD UNION		23	4401140017	SUPPORT INFÉRIEUR	
9	4401011517	COUVERCLE GUIDE SUPÉRIEUR		24	4401011506	TAMPON ARTICULÉ D 28	
10	4401011501	JOINT ELEVATEUR		25	4401010501	TAMPON ARTICULÉ	
11	4401011509	JOINT ELEVATEUR		26	71184R0100	STRUCTURE FAUTEUIL ÉLÉVATEUR	
12	4401011516	SUPPORT DE JOINT		27	71183R0200	SUPPORT MAIN COURANTE	
13	4401011505	DOUILLES		28	71183R0100	MAIN COURANTE A-1000	

ÉCLATÉ

REV.: 1

1369

DATE: 25/11/2020

PAG.: 4/12

CODE **M00896, M00902, M00905, M00909**DESCRIPTION: **ÉLÉVATEUR HYDRAULIQUE SANS ÉCHELLE**

14	4401011507	PLAQUE SUPPORT DE SIEGE	29	11277R0600	CYLINDRE ÉLÉVATEUR
15	4401050402	DOUILLES	30	11277R0100	ENSEMBLE TUBE GUIDE
31	71183R0730	TRAVERSE UNION L-880	32	00143	FIXATION AVEC VIS

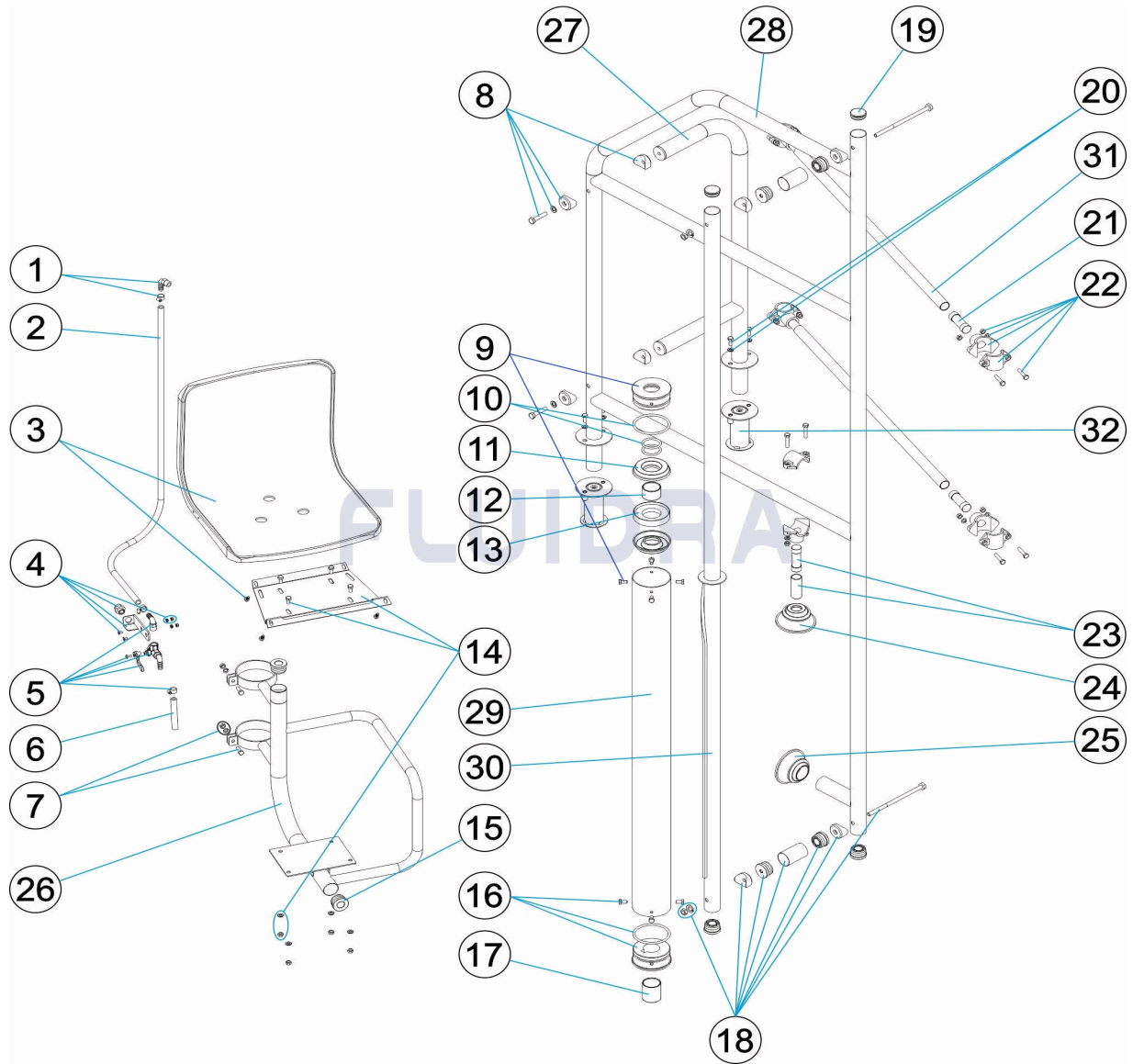
PARTS BREAKDOWN

REV.: 1
DATE: 25/11/2020
SHEET: 5/12

1369

CODE M00896, M00902, M00905, M00909

DESCRIPTION: HYDRAULIC LIFT WITHOUT LADDER



ENGLISH

POS	CODE	DESCRIPTION	QUANTITY	POS	CODE	DESCRIPTION	QUANTITY
1	4401070005	90° 3/8" BEND + FLANG "		16	4401011513	GUIDE SOCKET	
2	4401011514	PIPE 0.9 M.		17	4401011512	SECURITY SOCKET	
3	4401011518	SIÈGE		18	4401011519	UNION KIT	
4	4401011515	VALVE SUPPORT		19	4401070208	PLUG D.43	
5	4401011508	COMPLETE 3-WAY VALVE		20	4401010008	TREAD BOLT SET	
6	4402050122	CUU REGULATOR VALVE		21	4401140026	TOP SUPPORT PIPE	
7	4401140006	PLATFORM FIXINGS		22	4401011520	SUPPORT DASP	
8	4401140025	UNION		23	4401140017	LOWER SUPPORT	
9	4401011517	SUPERIOR GUIDE COVER		24	4401011506	ARTICULATED FOOT PAD D 28	
10	4401011501	LIFTER GASKETS		25	4401010501	ARTICULATED FOOT PAD	
11	4401011509	LIFTER GASKET		26	71184R0100	LIFT SEAT STRUCTURE	
12	4401011516	SEAL SUPPORT		27	71183R0200	HANDRAIL SUPPORT	
13	4401011505	SOCKETS		28	71183R0100	A-1000 HANDRAIL	

PARTS BREAKDOWN

REV.: 1
DATE: 25/11/2020
SHEET: 6/12

1369

CODE **M00896, M00902, M00905, M00909**

DESCRIPTION: **HYDRAULIC LIFT WITHOUT LADDER**

14	4401011507	CHAIR PLATE	29	11277R0600	HYDRAULIC CYLINDER TUBE
15	4401050402	BUSHES	30	11277R0100	MECHANICAL TUBE
31	71183R0730	L-880 CONNECTION PIPES	32	00143	ANCHORING WITH SCREWS

ESPLOSO

REV.: 1

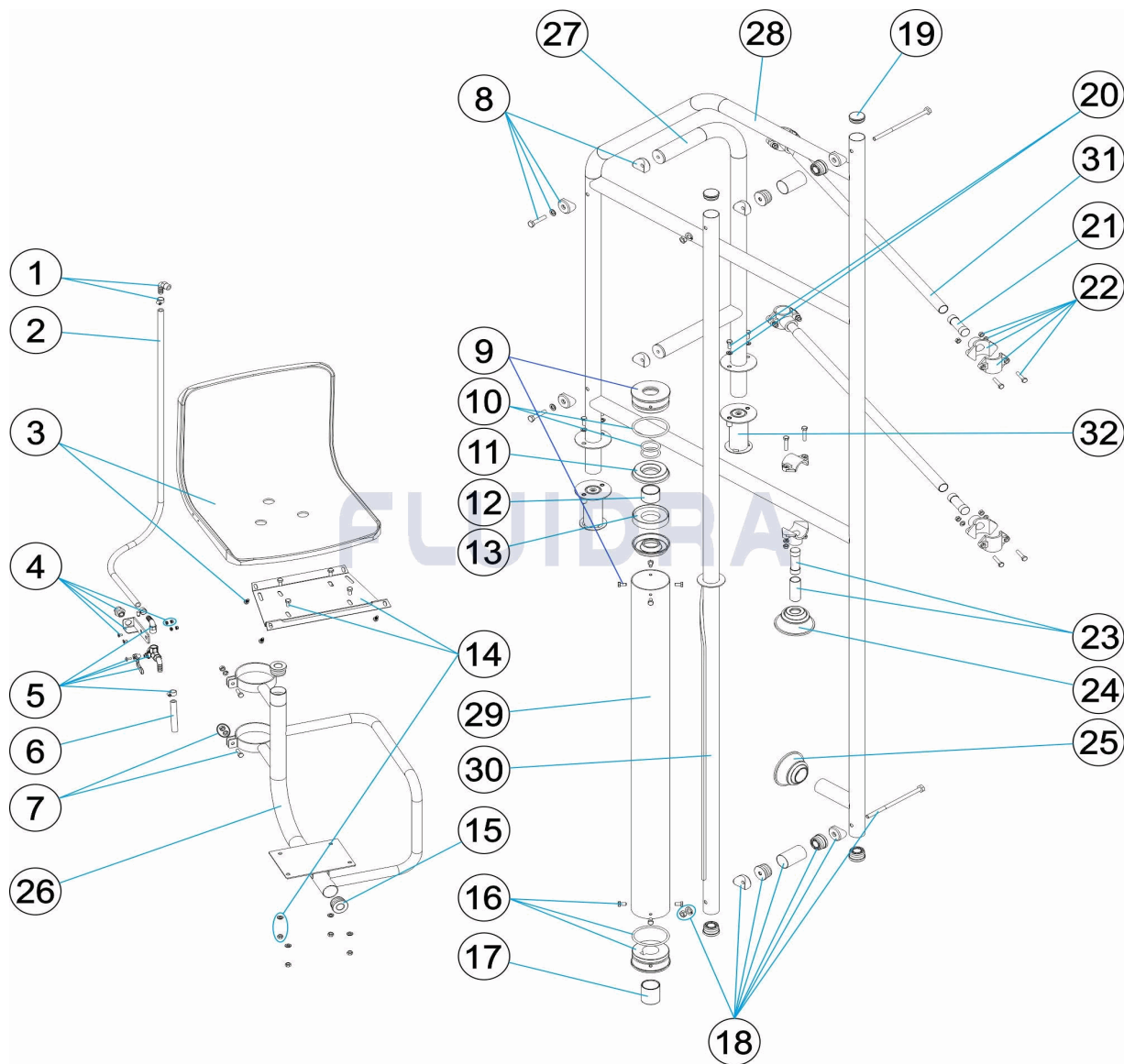
1369

DATA: 25/11/2020

PAG.: 7/12

CODICE **M00896, M00902, M00905, M00909**

DESCRIZIONE: **ELEVATORE IDRAULICO SENZA SCALA**



ITALIANO

POS	CODICE	DESCRIZIONE	QUANTITA'	POS	CODICE	DESCRIZIONE	QUANTITA'
1	4401070005	RACCORDO A GOMITO 90° 3/8" + FLANGI '		16	4401011513	TAPPO CON GUIDA	
2	4401011514	TUBO ENTRATA 0,9 M.		17	4401011512	TAPPO DI SICUREZZA	
3	4401011518	SEIDA		18	4401011519	KIT ATTACO SEIDA	
4	4401011515	SUPPORTO VALVOLA		19	4401070208	TAPPO D.43	
5	4401011508	VALVOLA A 3 VIE COMPLETA		20	4401010008	BULLONERIA GRADINO	
6	4402050122	CONDOTTO DI ASPIRAZIONE N.C.C.		21	4401140026	TUBO SOSTENGO SUPERIORE	
7	4401140006	KIT VITI PIATTAFORMA		22	4401011520	PRESA A STAFFA SOSTEGNO	
8	4401140025	ATTACO SEIDA		23	4401140017	SUPPORTO INFERIORE	
9	4401011517	TAPPO GUIDA SUPERIORE		24	4401011506	PIEDINO SNODABILE D 28	
10	4401011501	GUARNIZIONI SOLLEVATORE		25	4401010501	PIEDINO SNODABILE	
11	4401011509	GUARNIZIONE SOLLEVATORE		26	71184R0100	STRUTTURA SEDIA ELEVATRICE	
12	4401011516	SUPPORTO GUARNIZIONE		27	71183R0200	SUPPORTO PASSAMANO	
13	4401011505	PASSANTI		28	71183R0100	CORRIMANO A-1000	

ESPLOSO

REV.: 1
DATA: 25/11/2020
PAG.: 8/12

1369

CODICE **M00896, M00902, M00905, M00909**

DESCRIZIONE: **ELEVATORE IDRAULICO SENZA SCALA**

14	4401011507	PIASTRA SEGGIOLA	29	11277R0600	CILINDRO ELEVATORE
15	4401050402	PASSANTI	30	11277R0100	KIT CILINDRO GUIDA
31	71183R0730	TRAVERSA UNIONE L-880	32	00143	ANCORAGGIO DI FISSAGGIO CON VITI

EINZELTEILE

ÜBER.: 1

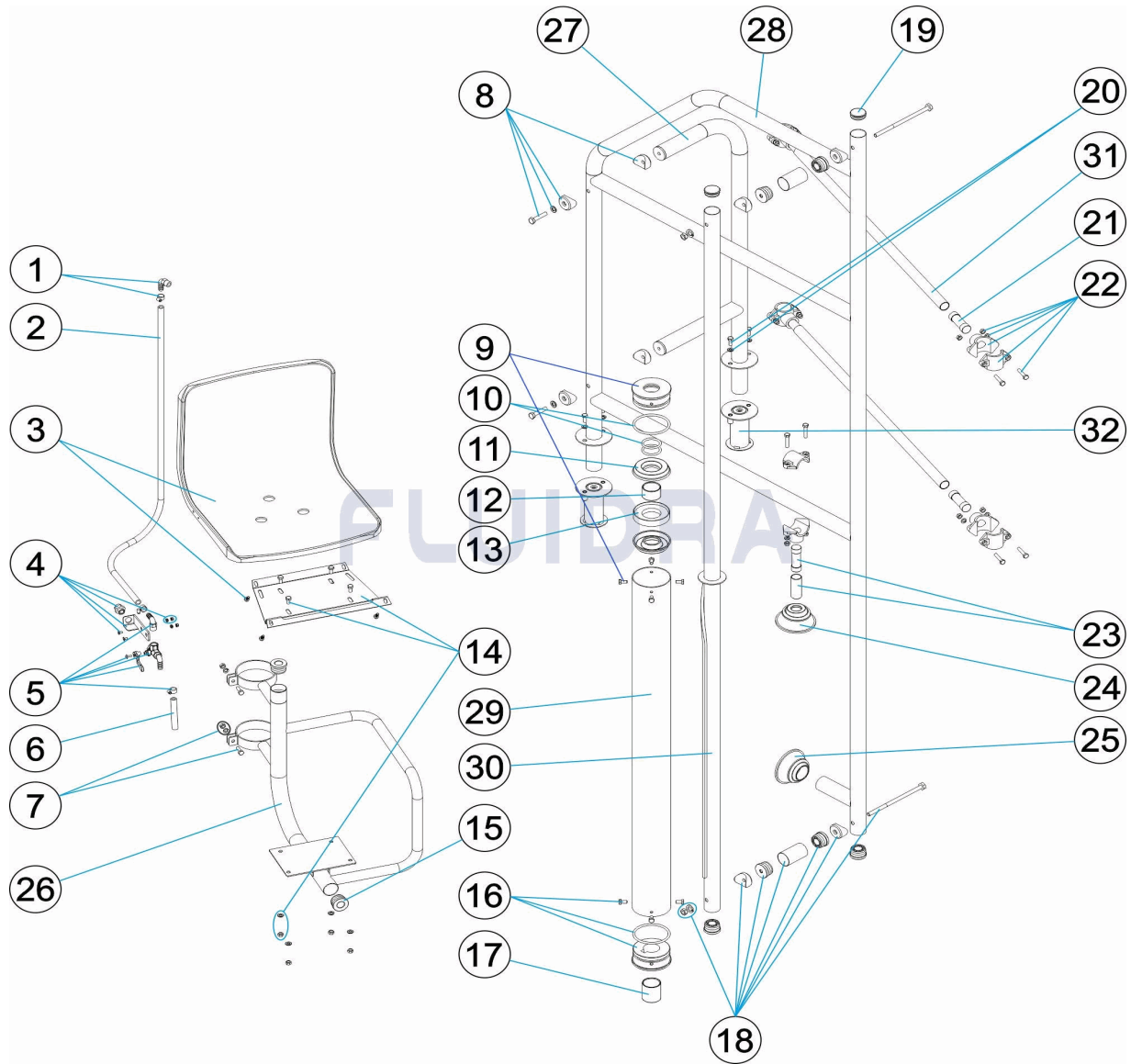
1369

DATUM: 25/11/2020

BLATT: 9/12

CODE **M00896, M00902, M00905, M00909**

BESCHREIBUNG: **HYDRAULISCHER LIFTER OHNE TREPPE**



DEUTSCH

POS	CODE	BESCHREIBUNG	MENGE	POS	CODE	BESCHREIBUNG	MENGE
1	4401070005	WINKEL NORMA 90° 3/8" MIT FLANSC "		16	4401011513	FASSUNG FÜHRUNG	
2	4401011514	ROHR EINGANG 0,9 M		17	4401011512	SICHERHEITSSASSUNG	
3	4401011518	SITZ		18	4401011519	SET ANSCHLUSSVERBINDUNG	
4	4401011515	HALTERUNG VENTIL		19	4401070208	STOPFEN D.43	
5	4401011508	3-WEGE-VENTIL KOMPLETT		20	4401010008	SCHRAUBENSATZ STUFE	
6	4402050122	SAUGLEITUNG E.C.C.		21	4401140026	OBERE HILFSROHR	
7	4401140006	SCHRAUBENSATZ PLATTFORM		22	4401011520	HILFSFLANSCH	
8	4401140025	ANSCHLUSSVERBINDUNG		23	4401140017	HALTERUNG UNTEN	
9	4401011517	ABDECKUNG FÜHRUNG OBEN		24	4401011506	BEWEGLICHER ABSCHLUSS D. 28	
10	4401011501	DICHTUNGEN LIFT		25	4401010501	BEWEGLICHER ABSCHLUSS	
11	4401011509	DICHTUNG LIFT		26	71184R0100	STRUKTUR HEBESITZ	
12	4401011516	HALTERUNG DICHTUNG		27	71183R0200	ABSTANDHALTERSATZ LEITER	
13	4401011505	FASSUNG ABSCHLUSS UNTEN		28	71183R0100	HANDLAUF A-1000	

EINZELTEILE

ÜBER.: 1

1369

DATUM: 25/11/2020

BLATT: 10/12

CODE **M00896, M00902, M00905, M00909**BESCHREIBUNG: **HYDRAULISCHER LIFTER OHNE TREPPE**

14	4401011507	PLATINE SITZ	29	11277R0600	ZYLINDER LIFT HYDRAULISCH
15	4401050402	FASSUNGEN FÜHRUNG	30	11277R0100	SET FÜHRUNGSRÖHR
31	71183R0730	QUERTEIL VERBINDUNG L-880	32	00143	VERANKERUNG FIXIERUNG MIT SCHRAUB

ITEM

REV.: 1

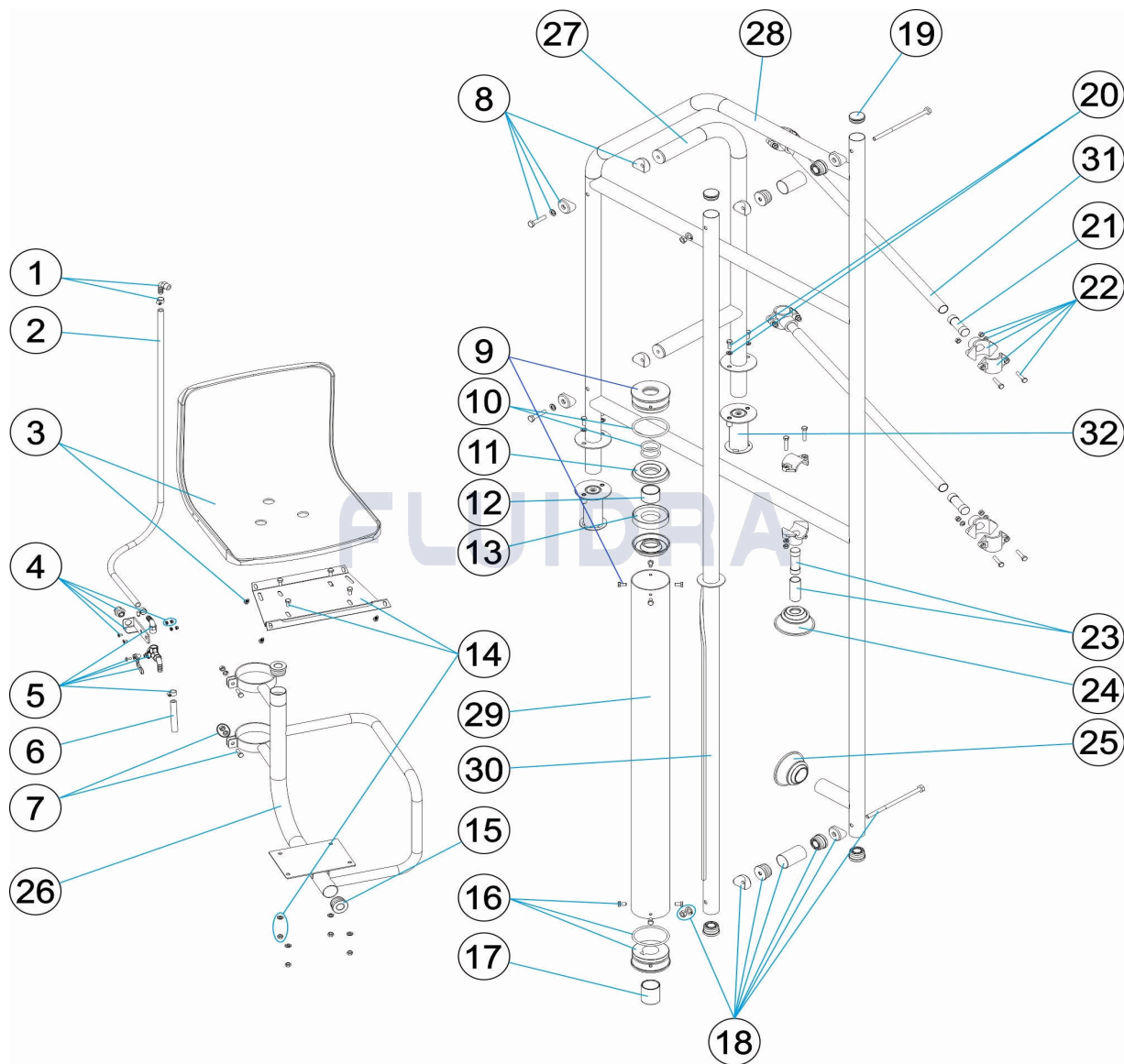
1369

DATA: 25/11/2020

FOLHA: 11/12

CODIGO **M00896, M00902, M00905, M00909**

DESCRIÇÃO: **ELEVADOR HIDRÁULICO SEM ESCADA**



PORTUGUES

POS	CODIGO	DESCRIÇÃO	JANTIDADE	POS	CODIGO	DESCRIÇÃO	JANTIDADE
1	4401070005	COTOVELO NORMA 90° 3/8" + FLANG "		16	4401011513	CASQUILHO GUIA	
2	4401011514	TUBO ENTRADA 0,9 M.		17	4401011512	CASQUILHO DE SEGURANÇA	
3	4401011518	CADEIRA		18	4401011519	CONJUNTO UNIÃO LIGAÇÃO	
4	4401011515	SUPORTE VÁLVULA		19	4401070208	TAMPÃO D.43	
5	4401011508	VALVULA 3 VIAS COMPLETA		20	4401010008	PARAFUSOS DEGRAU	
6	4402050122	TUBO ASPIRAÇÃO E.C.C.		21	4401140026	TUBO DE APOIO SUPERIOR	
7	4401140006	CONJ. PARAFUSOS PLATAFORMA		22	4401011520	ABRACADEIRA DE APOIO	
8	4401140025	UNIÃO LIGAÇÃO		23	4401140017	SUPORTE INFERIOR	
9	4401011517	TAMPA GUIA SUPERIOR		24	4401011506	BATENTE ARTICULADA D 28	
10	4401011501	JUNTAS ELEVADOR		25	4401010501	BATENTE ARTICULADA	
11	4401011509	JUNTA ELEVADOR		26	71184R0100	ESTRUTURA CADEIRA ELEVADOR	
12	4401011516	APOIO JUNTA		27	71183R0200	SUPORTE CORRIMÃO	
13	4401011505	CASQUILHOS		28	71183R0100	CORRIMÃO A-1000	

ITEM

REV.: 1

1369

DATA: 25/11/2020

FOLHA: 12/12

CODIGO **M00896, M00902, M00905, M00909**DESCRIÇÃO: **ELEVADOR HIDRÁULICO SEM ESCADA**

14	4401011507	PLACA ASSENTO	29	11277R0600	CILINDRO ELEVADOR
15	4401050402	CONJ. CASQUILHOS	30	11277R0100	CONJUNTO TUBO GUÍA
31	71183R0730	TRAVESSA UNIÃO L-880	32	00143	ANCORAGEM FIXAÇÃO COM PARAFUSOS