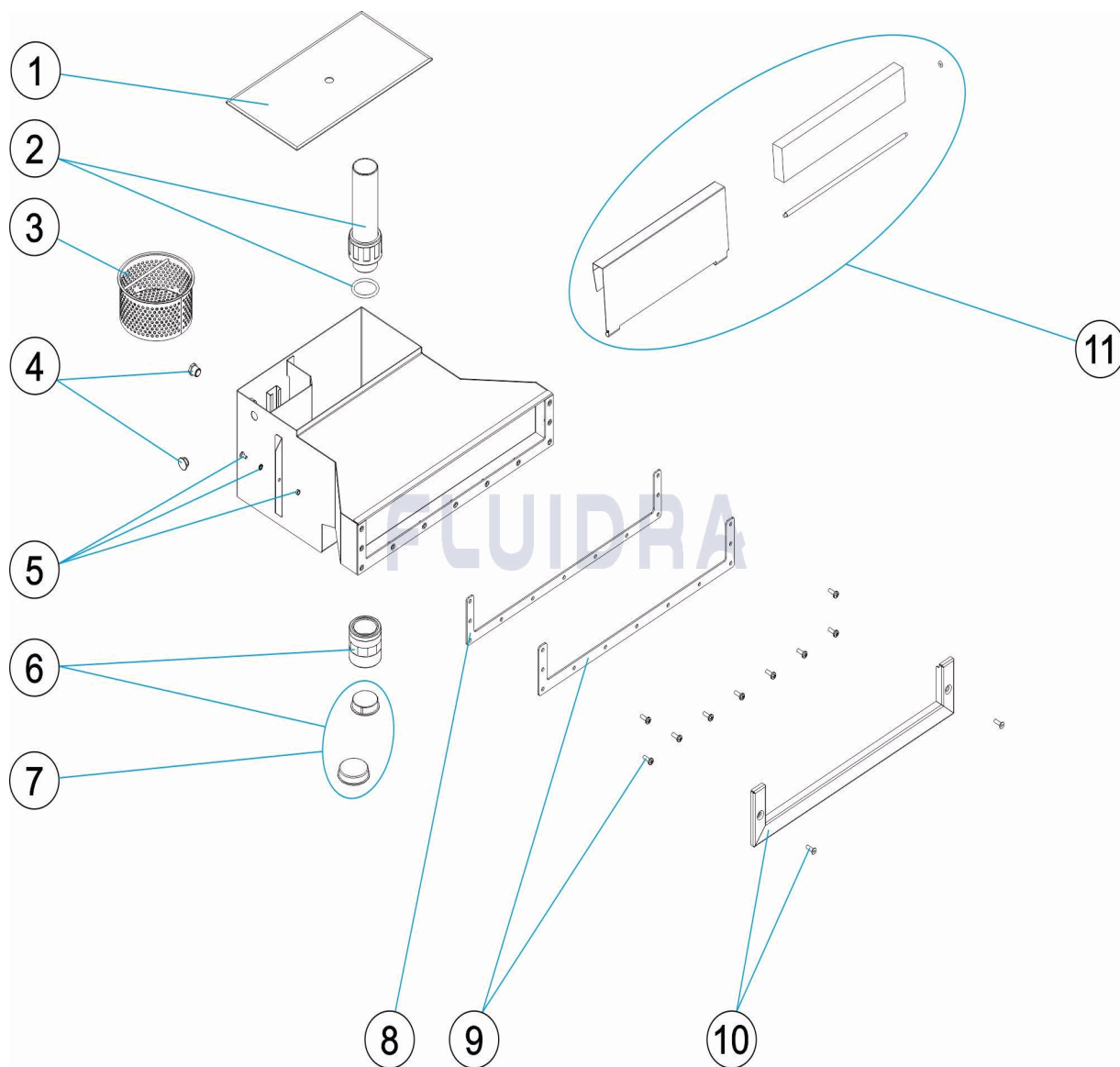


CODIGO **73501, 73502**

DESCRIPCION: **SKIMMER FINO A-500/A-650**



**ESPAÑOL**

POS	CODIGO	DESCRIPCION	CANTIDAD	POS	CODIGO	DESCRIPCION	CANTIDAD
1	4402010048	TAPA SKIMMER		8	* 4402010178	JUNTA SKIMMER A-500	
2	4402010049	REBOSADERO SKIMMER		8	* 4402010179	JUNTA SKIMMER A-650	
3	4402010050	CESTO RECOGEHOJAS CON VARILLA		9	* 4402010180	BRIDA BOCA SKIMMER A-500	
4	4402010177	TAPON PROTECTOR		9	* 4402010181	BRIDA BOCA SKIMMER A-650	
5	4402010056	TOMA TIERRA		10	* 4402010182	EMBELLECEDOR BOCA SKIMMER A-500	
6	4402010051	CJTO. MANGUITO		10	* 4402010183	EMBELLECEDOR BOCA SKIMMER A-650	
7	4402010052	CJTO. TAPONES		11	4402010045	CJTO. COMPUERTA SKIMMER	

**CODIGO 73501, 73502**

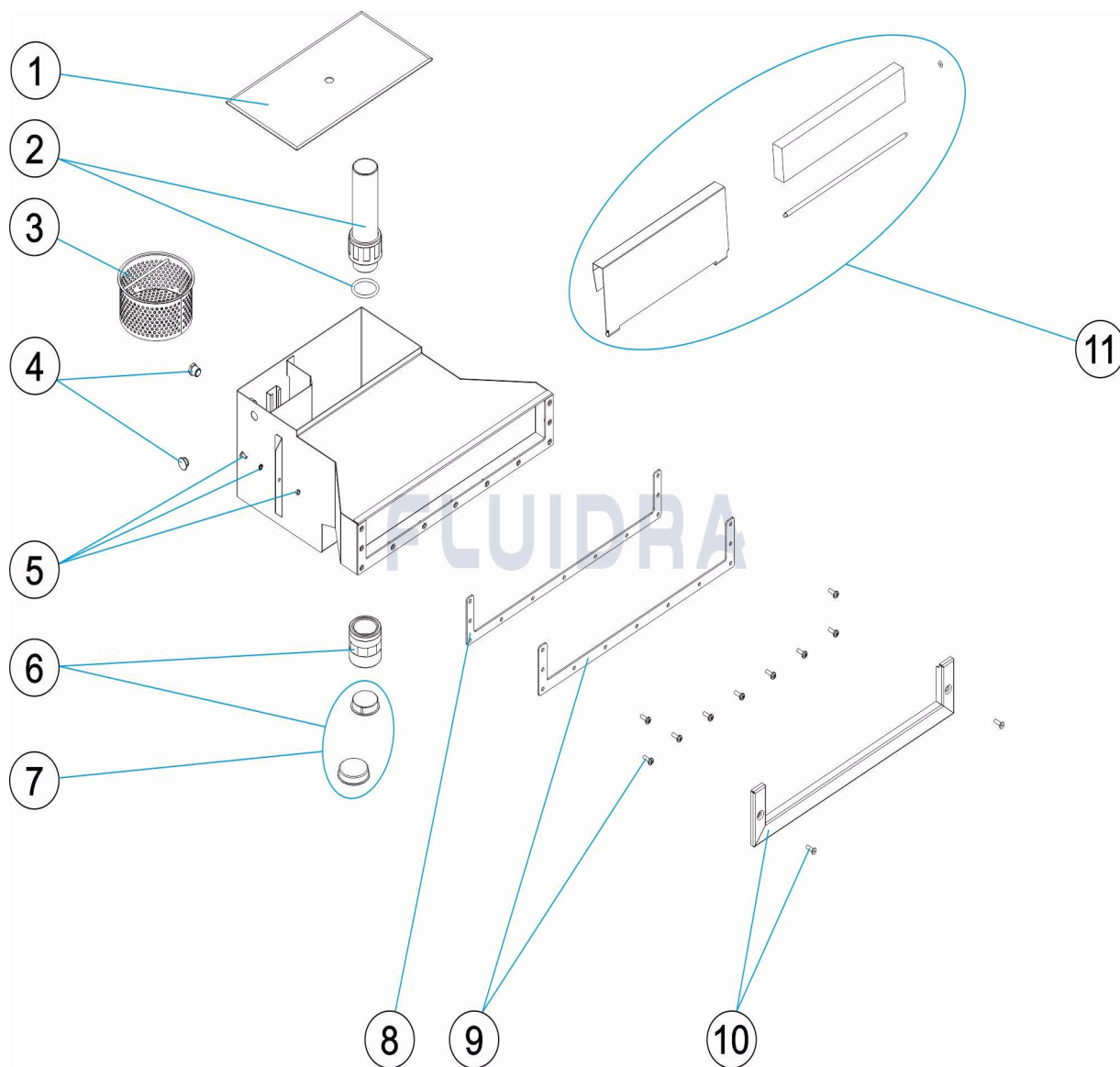
**DESCRIPCION: SKIMMER FINO A-500/A-650**

### OBSERVACIONES

POS	CODIGO	OBSERVACIONES
8	* 4402010178	PARA: 73501
8	* 4402010179	PARA: 73502
9	* 4402010180	PARA: 73501
9	* 4402010181	PARA: 73502
10	* 4402010182	PARA: 73501
10	* 4402010183	PARA: 73502

CODE 73501, 73502

DESCRIPTION: SKIMMER MINCE A-500/A-650



FRANCAIS

POS	CODE	DESCRIPTION	QUANTITE	POS	CODE	DESCRIPTION	QUANTITE
1	4402010048	COUVERCLE ROND DE SKIMMER		8	* 4402010178	JOINT SKIMMER A-500	
2	4402010049	TROP PLEIN SKIMMER INOX		8	* 4402010179	JOINT SKIMMER A-650	
3	4402010050	PANIER SKIMMER		9	* 4402010180	BRIDE DE BOUCHE SKIMMER A-500	
4	4402010177	BOUCHON PROTECTEUR		9	* 4402010181	BRIDE DE BOUCHE SKIMMER A-650	
5	4402010056	PRISE DE TERRE		10	* 4402010182	ENJOLIVEUR SKIMMER A-500	
6	4402010051	ENS. FLEXIBLE		10	* 4402010183	ENJOLIVEUR SKIMMER A-650	
7	4402010052	ENS. BOUCHONS		11	4402010045	COLET DE SKIMMER	

CODE **73501, 73502**

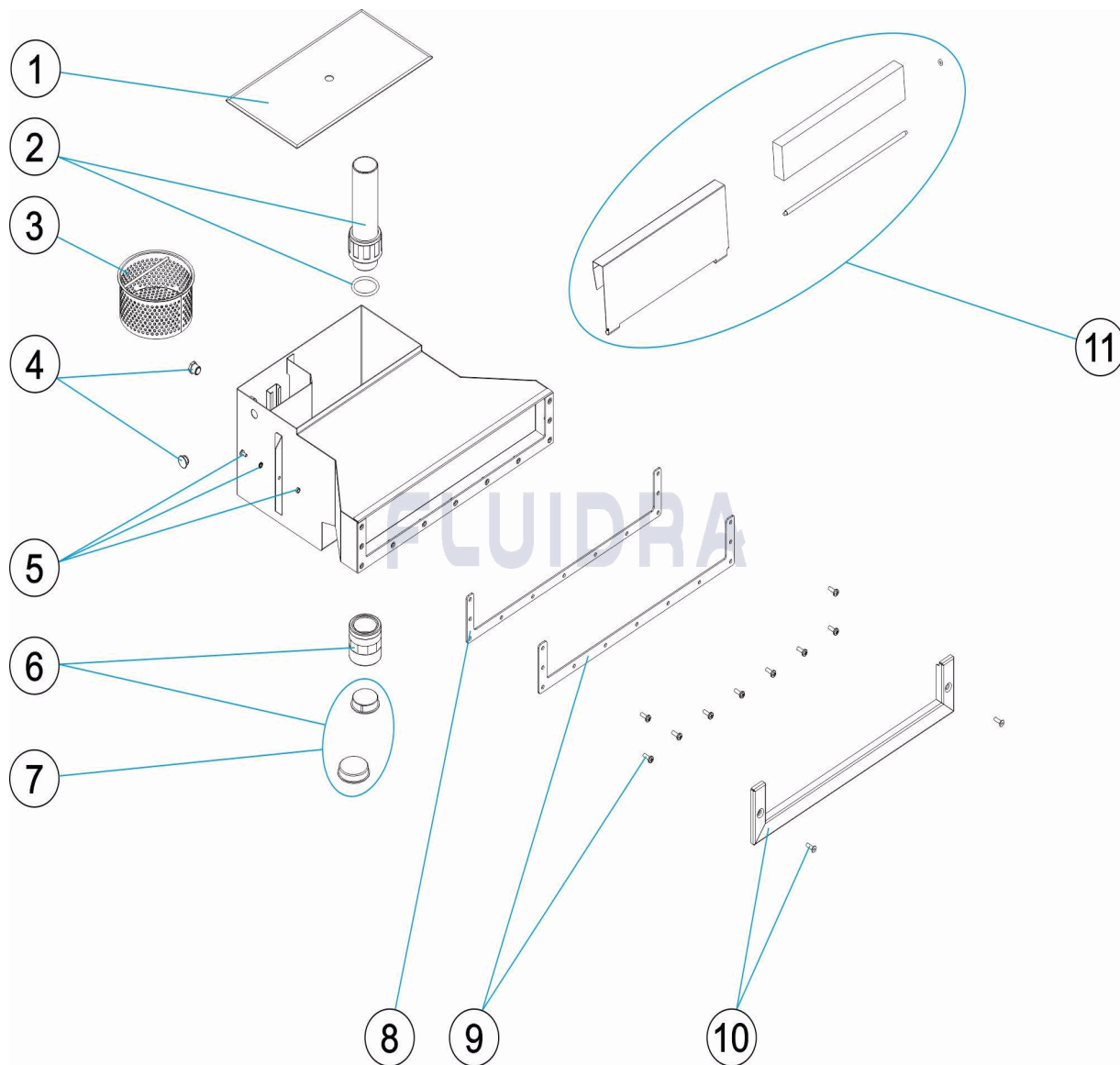
DESCRIPTION: **SKIMMER MINCE A-500/A-650**

**OBSERVATIONS**

POS	CODE	OBSERVATIONS
8	* 4402010178	POUR: 73501
8	* 4402010179	POUR: 73502
9	* 4402010180	POUR: 73501
9	* 4402010181	POUR: 73502
10	* 4402010182	POUR: 73501
10	* 4402010183	POUR: 73502

CODE 73501, 73502

DESCRIPTION: A-500/A-650 SLIM SKIMMER



**ENGLISH**

POS	CODE	DESCRIPTION	QUANTITY	POS	CODE	DESCRIPTION	QUANTITY
1	4402010048	SKIMMER LID		8	* 4402010178	SKIMMER GASKET A-500	
2	4402010049	S. S. SKIMMER OVERFLOW		8	* 4402010179	SKIMMER GASKET A-650	
3	4402010050	SKIMMER BASKET		9	* 4402010180	FLANGE MOUTH WITH SKIMMER A-500	
4	4402010177	SMALL PROTECTIVE PLUG		9	* 4402010181	FLANGE MOUTH WITH SKIMMER A-650	
5	4402010056	EARTH CONNECTION		10	* 4402010182	FACE PLATE SKIMMER A-500	
6	4402010051	HOSE ASSEMBLY		10	* 4402010183	FACE PLATE SKIMMER A-650	
7	4402010052	CAPS ASSEMBLY		11	4402010045	SKIMMER FLAP	

CODE                    **73501, 73502**

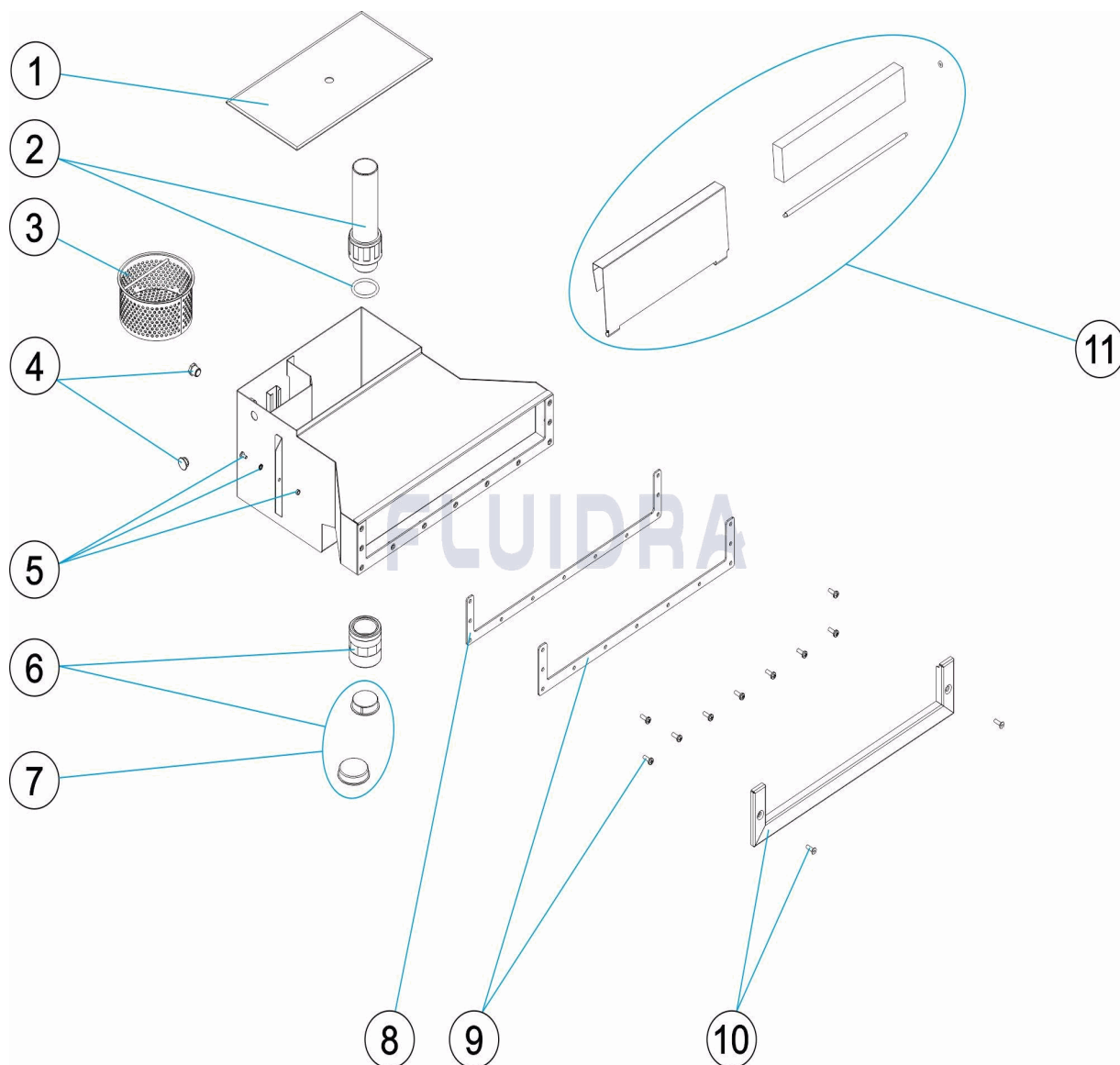
DESCRIPTION: **A-500/A-650 SLIM SKIMMER**

## OBSERVATIONS

POS	CODE	OBSERVATIONS
8	* 4402010178	FOR: 73501
8	* 4402010179	FOR: 73502
9	* 4402010180	FOR: 73501
9	* 4402010181	FOR: 73502
10	* 4402010182	FOR: 73501
10	* 4402010183	FOR: 73502

CODICE 73501, 73502

DESCRIZIONE: SKIMMER OTTILE A-500/A-650



ITALIANO

POS	CODICE	DESCRIZIONE	QUANTITA'	POS	CODICE	DESCRIZIONE	QUANTITA'
1	4402010048	COPERCHIO SKIMMER		8	* 4402010178	GUARNIZIONE SKIMMER A-500	
2	4402010049	TROPPO PIENO SKIMMER INOX		8	* 4402010179	GUARNIZIONE SKIMMER A-650	
3	4402010050	CESTELLO SKIMMER		9	* 4402010180	FLANGIA BOCCHETTASKIMMER A-500	
4	4402010177	TAPPO DI PROTEZIONE		9	* 4402010181	FLANGIA BOCCHETTASKIMMER A-650	
5	4402010056	PRESA A TERRA		10	* 4402010182	FLANGIA DI RIFINITURA SKIMMER A-500	
6	4402010051	SET MANICOTTO		10	* 4402010183	FLANGIA DI RIFINITURA SKIMMER A-650	
7	4402010052	SET TAPPI		11	4402010045	BATTENTE SKIMMER	

**CODICE 73501, 73502**

**DESCRIZIONE: SKIMMER OTTILE A-500/A-650**

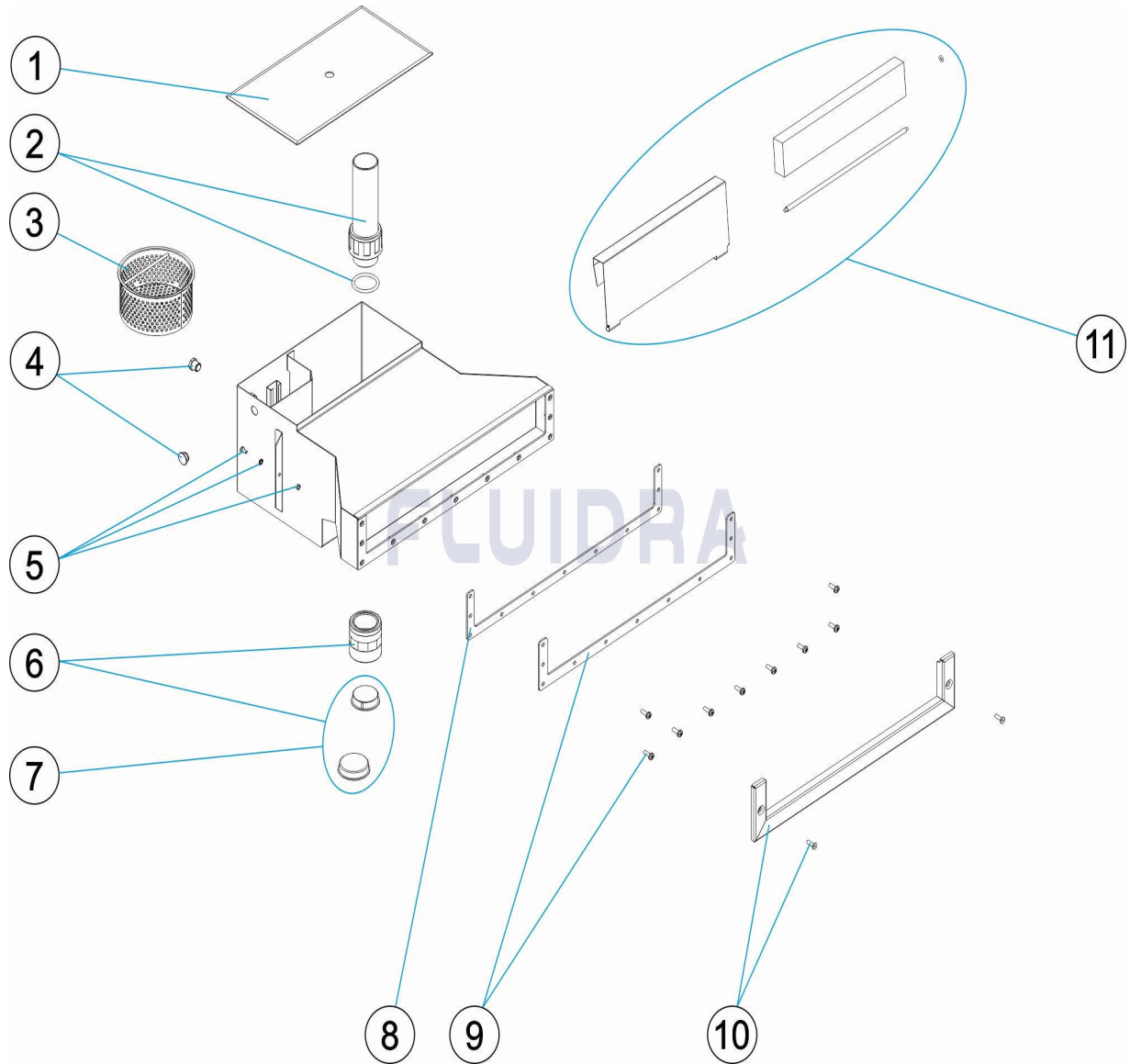
**OSSERVAZIONI**

POS	CODICE	OSSERVAZIONI
8	* 4402010178	PER: 73501
8	* 4402010179	PER: 73502
9	* 4402010180	PER: 73501
9	* 4402010181	PER: 73502
10	* 4402010182	PER: 73501
10	* 4402010183	PER: 73502



CODE **73501, 73502**

BESCHREIBUNG: **SCHLANK SKIMMER A-500/A-650**



**DEUTSCH**

POS	CODE	BESCHREIBUNG	MENGE	POS	CODE	BESCHREIBUNG	MENGE
1	4402010048	SKIMMERDECKEL		8	* 4402010178	DICHTUNG SKIMMER A-500	
2	4402010049	AUFSATZ SKIMMER		8	* 4402010179	DICHTUNG SKIMMER A-650	
3	4402010050	BLATTFÄNGERKORB MIT RUNDEISEN		9	* 4402010180	FLANSCH SKIMMEREINLASS A-500	
4	4402010177	SCHUTZSTOPFEN		9	* 4402010181	FLANSCH SKIMMEREINLASS A-650	
5	4402010056	ERDUNG		10	* 4402010182	BLENDE SKIMMEREINLASS A-500	
6	4402010051	SET NIPPEL		10	* 4402010183	BLENDE SKIMMEREINLASS A-650	
7	4402010052	STOPFENSET		11	4402010045	SET SKIMMERKLAPPE	

CODE **73501, 73502**

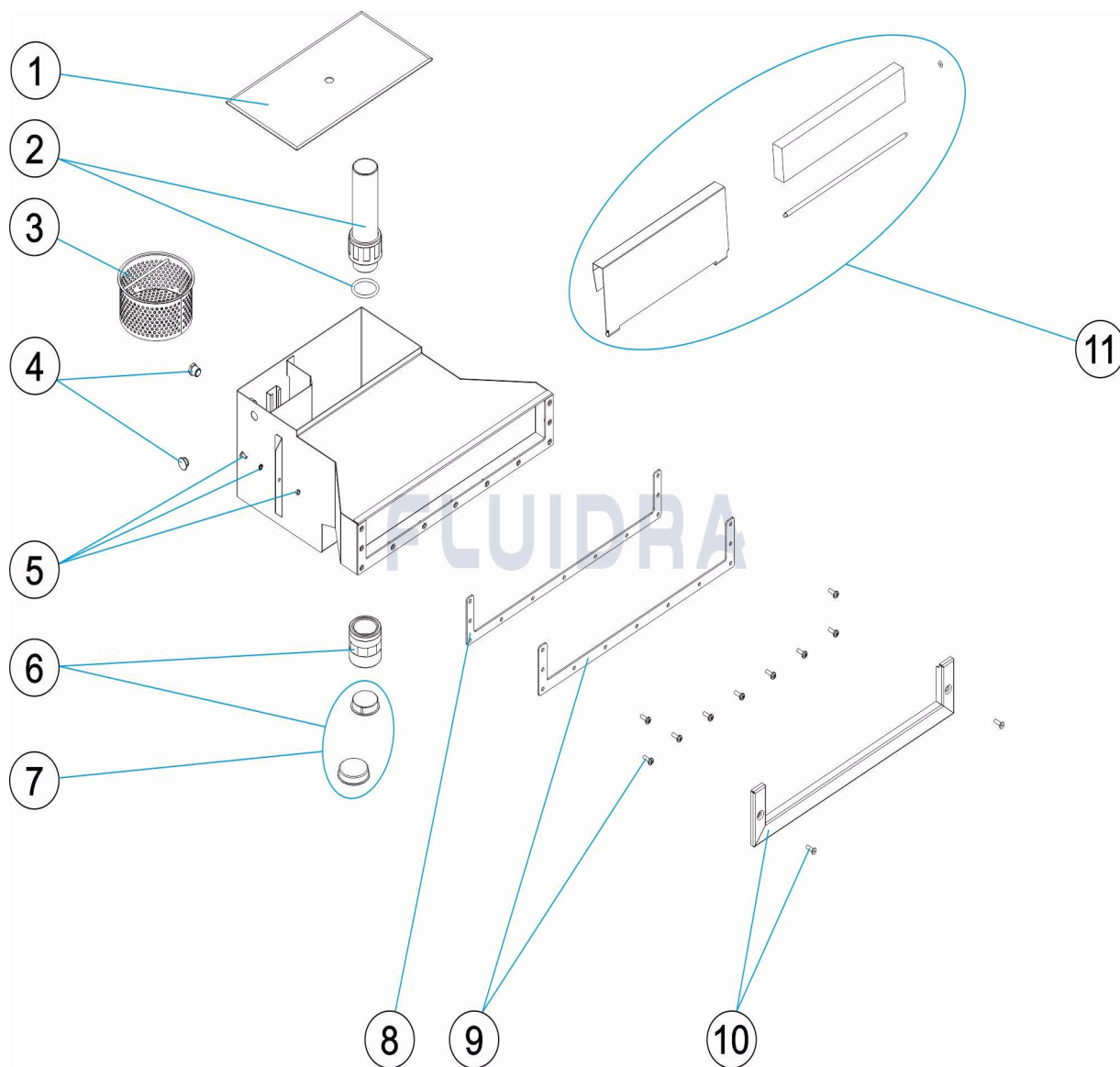
BESCHREIBUNG: **SCHLANK SKIMMER A-500/A-650**

## HINWEISE

POS	CODE	HINWEISE
8	* 4402010178	FÜR: 73501
8	* 4402010179	FÜR: 73502
9	* 4402010180	FÜR: 73501
9	* 4402010181	FÜR: 73502
10	* 4402010182	FÜR: 73501
10	* 4402010183	FÜR: 73502

CODIGO **73501, 73502**

DESCRIÇÃO: **SKIMMER FINO A-500/A-650**



**PORTUGUES**

POS	CODIGO	DESCRIÇÃO	JANTIDADE	POS	CODIGO	DESCRIÇÃO	JANTIDADE
1	4402010048	TAMPA SKIMMER		8	* 4402010178	JUNTA SKIMMER A-500	
2	4402010049	CALEIRA SKIMMER INOX		8	* 4402010179	JUNTA SKIMMER A-650	
3	4402010050	CESTO SKIMMER		9	* 4402010180	FLANGE BOCA SKIMMER A-500	
4	4402010177	TAMPÃO PROTECTOR		9	* 4402010181	FLANGE BOCA SKIMMER A-650	
5	4402010056	LIGAÇÃO A TERRA		10	* 4402010182	BLLENDE SKIMMEREINLASS A-500	
6	4402010051	CJTO. MANGA		10	* 4402010183	BLLENDE SKIMMEREINLASS A-650	
7	4402010052	CJTO. TAMPÕES		11	4402010045	COMPORTA SKIMMER	

**CODIGO**                    **73501, 73502**

**DESCRIÇÃO: SKIMMER FINO A-500/A-650**

## OBSERVAÇÕES

POS	CODIGO	OBSERVAÇÕES
8	* 4402010178	PARA: 73501
8	* 4402010179	PARA: 73502
9	* 4402010180	PARA: 73501
9	* 4402010181	PARA: 73502
10	* 4402010182	PARA: 73501
10	* 4402010183	PARA: 73502