

# KIT

REV: 0

1421

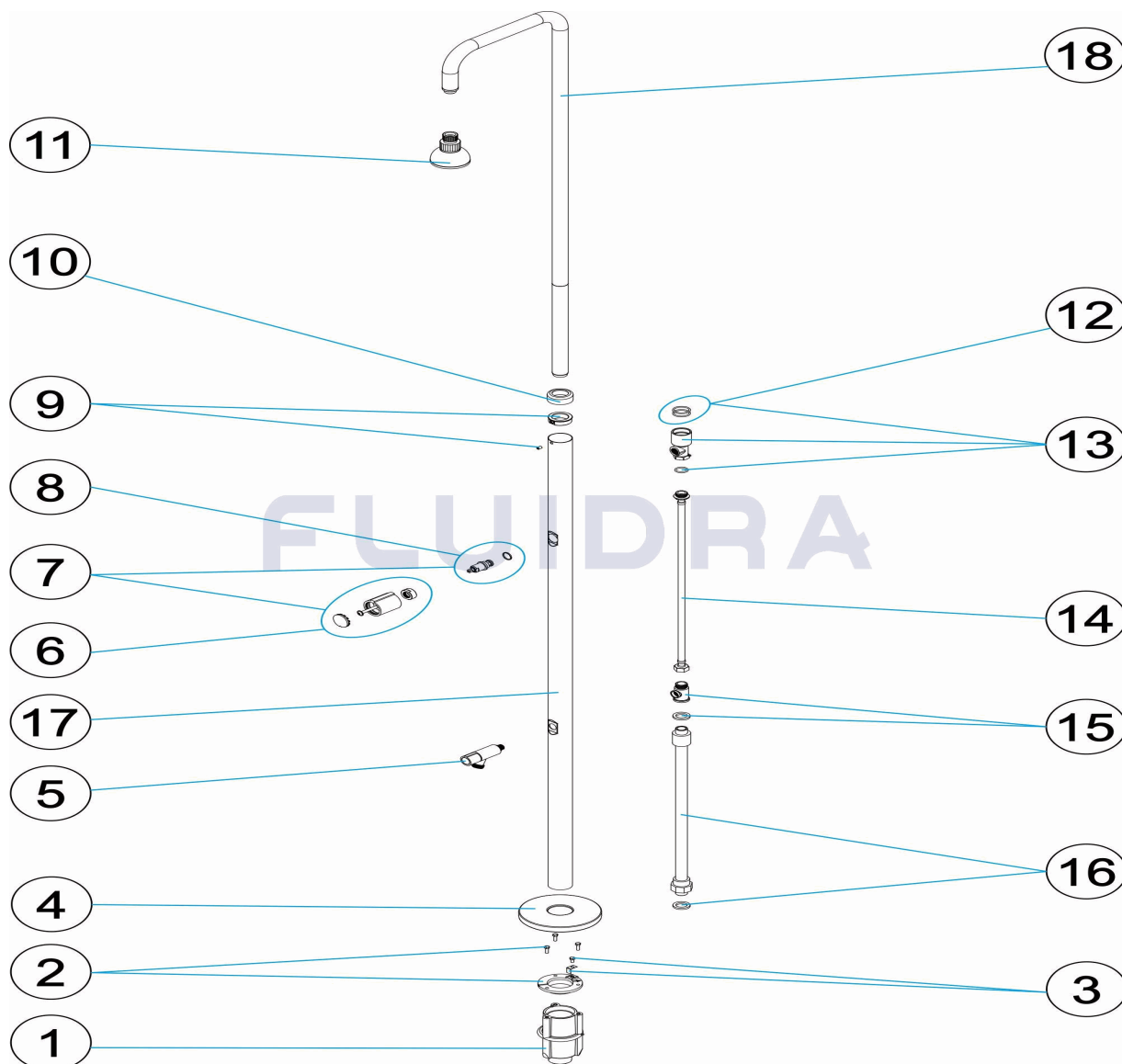
FECHA: 27/04/2021

HOJA: 1/6

CODIGO

**M00605**

DESCRIPCION: DUCHA 1 ROCIADOR 1 VALVULA Y LAVAPIES D.43



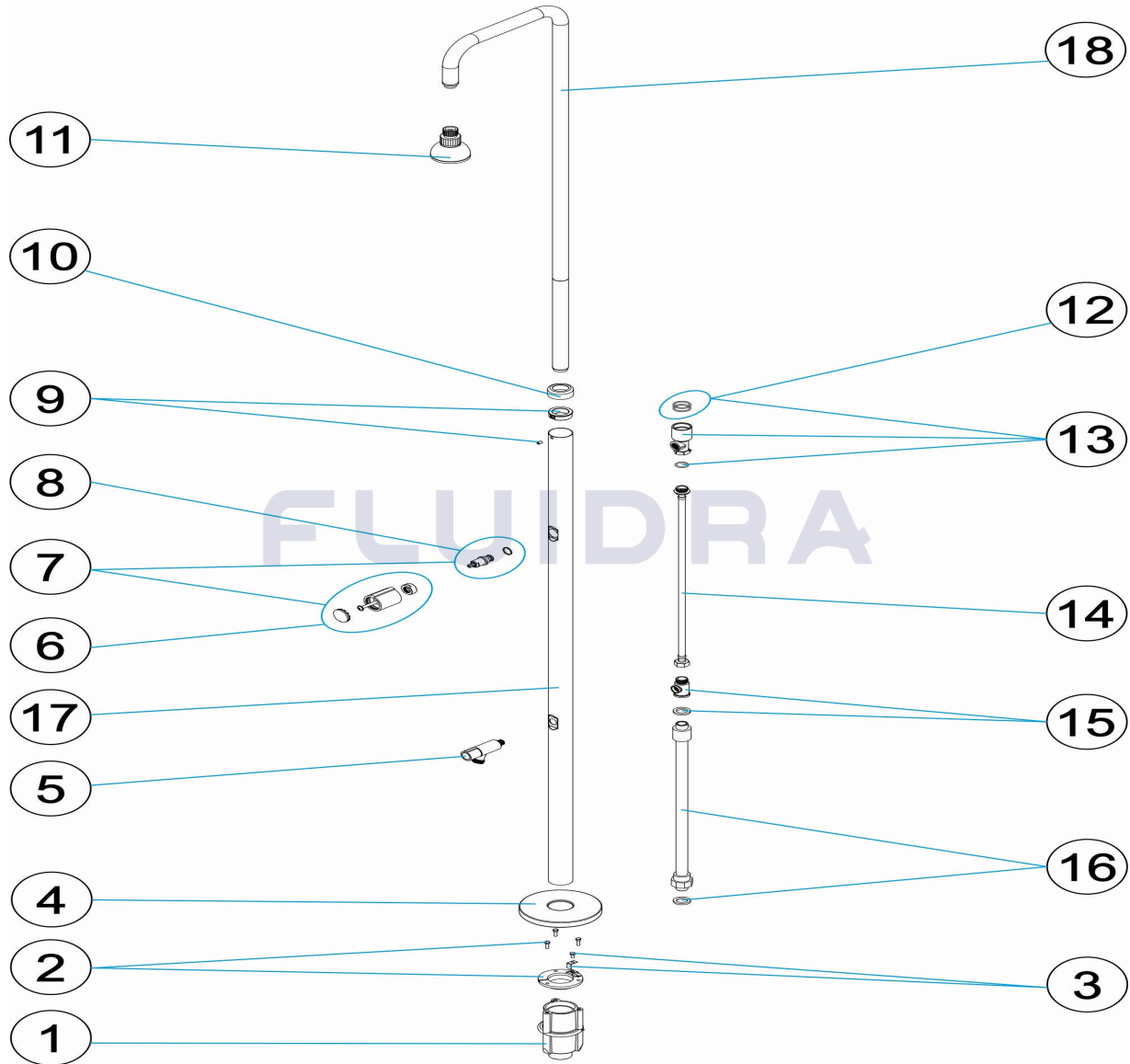
**ESPAÑOL**

| POS | CODIGO     | DESCRIPCION                 | CANTIDAD | POS | CODIGO      | DESCRIPCION                           | CANTIDAD |
|-----|------------|-----------------------------|----------|-----|-------------|---------------------------------------|----------|
| 1   | 4401040109 | CUERPO ANCLAJE DUCHA        |          | 10  | 4401040106  | TAPETA EMBELLECEDORA SUPERIOR 43      |          |
| 2   | 4401040108 | FIJACION ANCLAJE DUCHA 43   |          | 11  | 4401040042  | ROCIADOR                              |          |
| 3   | 4401040903 | TOMA DE TIERRA              |          | 12  | 4401040266  | JUEGO DE 2 JUNTAS TÓRICAS             |          |
| 4   | 4401040017 | TAPETA INFERIOR DUCHA D. 43 |          | 13  | 4401040110  | TUBO 1/2"                             |          |
| 5   | 4401040050 | GRIFO LAVAPIES              |          | 14  | 4401040048  | LATIGUILLO 1/2" M - 1/2" H L=550 MM " |          |
| 6   | 4401040019 | EJE VALVULA                 |          | 15  | 4401040049  | TE 1/2" M.-1/4" H.-1/2" H "           |          |
| 7   | 4401040264 | CJTO. POMO DUCHA            |          | 16  | 4401040215  | TUBO INFERIOR 1/2"                    |          |
| 8   | 4401040298 | POMO CILINDRICO             |          | 17  | 52718R0003  | TUBO EXTERIOR D. 43 LAVAPIES          |          |
| 9   | 4401040022 | ANILLO FIJACION             |          | 18  | M00604R0300 | BRAZO DUCHA                           |          |

CODE

**M00605**

DESCRIPTION: DOUCHE 1 POMMEAU 1 ROBINET ET LAVE-PIEDS D.43


**FRANCAIS**

| POS | CODE       | DESCRIPTION                         | QUANTITE | POS | CODE        | DESCRIPTION                      | QUANTITE |
|-----|------------|-------------------------------------|----------|-----|-------------|----------------------------------|----------|
| 1   | 4401040109 | CORPS D'ANCRAGE DE DOUCHE           |          | 10  | 4401040106  | ENJOLIVEUR SUPERIEUR 43          |          |
| 2   | 4401040108 | 1/2 ENCRAGE SUPÉRIEUR AVEC PRISE DE |          | 11  | 4401040042  | POMME DE DOUCHE                  |          |
| 3   | 4401040903 | PRISE DE TERRE                      |          | 12  | 4401040266  | SET DE 2 JOINTS TORIQUES         |          |
| 4   | 4401040017 | CACHE INFÉRIEUR DOUCHE D. 43        |          | 13  | 4401040110  | TUBE 1/2'                        |          |
| 5   | 4401040050 | ROBINET RINCE PIEDS                 |          | 14  | 4401040048  | TUYAU 1/2" M - 1/2" H L=550 MM " |          |
| 6   | 4401040019 | AXE VANNE                           |          | 15  | 4401040049  | TE 1/2" M.-1/4" H.-1/2" H "      |          |
| 7   | 4401040264 | ENSEMBLE POMMEAU                    |          | 16  | 4401040215  | TUBE INFÉRIEUR 1/2"              |          |
| 8   | 4401040298 | POMMEAU CYLINDRIQUE                 |          | 17  | 52718R0003  | TUBE EXTERIEUR D.43              |          |
| 9   | 4401040022 | ANNEAU FIXATION                     |          | 18  | M00604R0300 | BRAS DOUCHE                      |          |

# PARTS BREAKDOWN

REV.: 0

1421

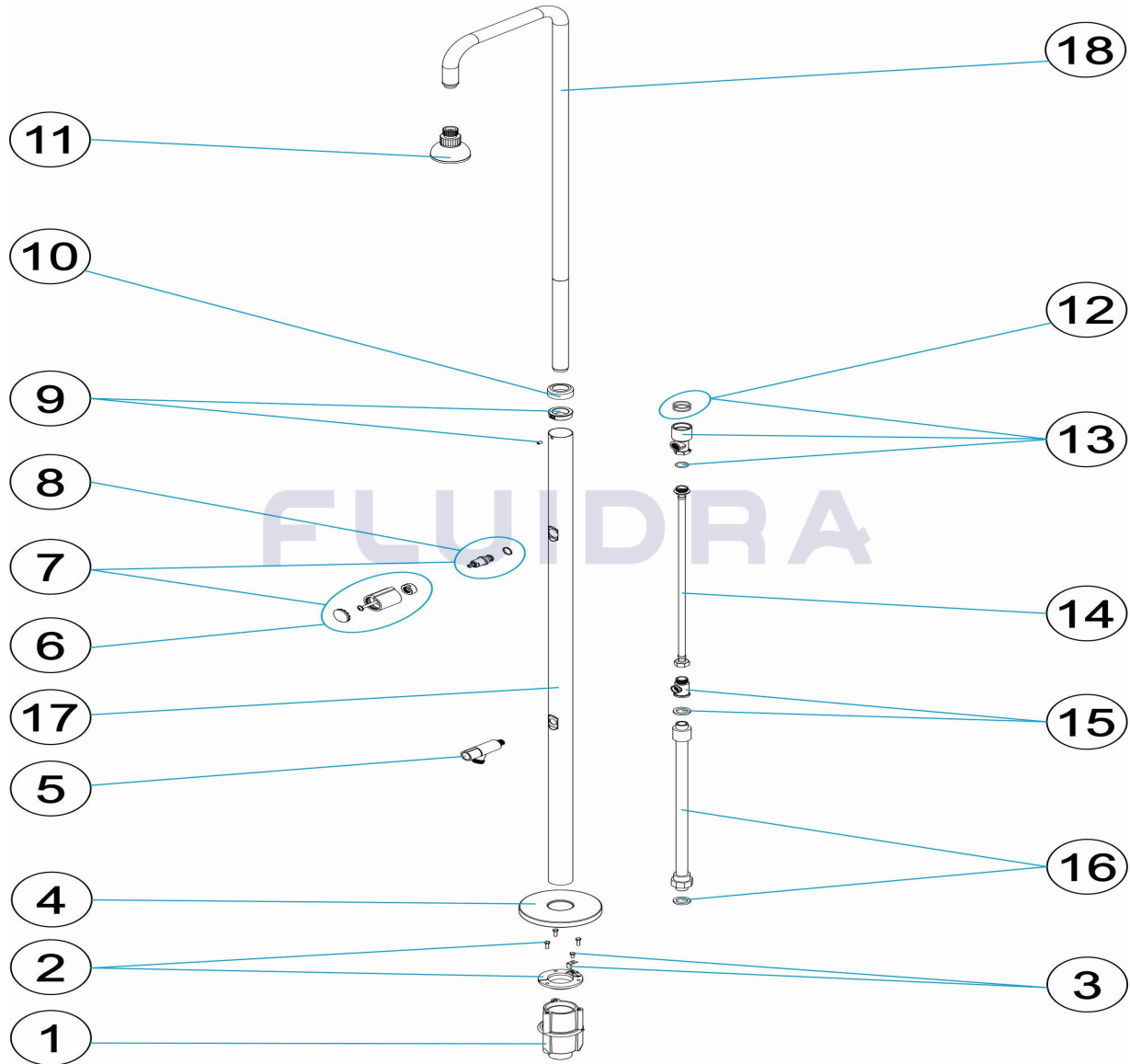
DATE: 27/04/2021

SHEET: 3/6

CODE

**M00605**

DESCRIPTION: **SHOWER 1 SHOWER HEAD 1 VALVE AND FOOT WASH D.43 PIPE**



**ENGLISH**

| POS | CODE       | DESCRIPTION              | QUANTITY | POS | CODE        | DESCRIPTION                              | QUANTITY |
|-----|------------|--------------------------|----------|-----|-------------|--|----------|
| 1   | 4401040109 | SHOWER ANCHORING FIXTURE |          | 10  | 4401040106  | TOP ESCUTCHEON PLATE 43                  |          |
| 2   | 4401040108 | SHOWER ANCHOR D 43       |          | 11  | 4401040042  | SHOWER HEAD                              |          |
| 3   | 4401040903 | EARTH CONNECTION         |          | 12  | 4401040266  | SET OF 2 O-RINGS                         |          |
| 4   | 4401040017 | D. 43 LOWER SHOWER COVER |          | 13  | 4401040110  | 1/2' PIPE                                |          |
| 5   | 4401040050 | FOOTBATH TAP             |          | 14  | 4401040048  | FLEXIBLE HOSE 1/2" M - 1/2" H L=550 MM ' |          |
| 6   | 4401040019 | VALVE SHAFT              |          | 15  | 4401040049  | 1/2" M.-1/4" H.-1/2" H. 'TE ' "          |          |
| 7   | 4401040264 | KNOB                     |          | 16  | 4401040215  | 1/2" BOTTOM PIP "                        |          |
| 8   | 4401040298 | CYLINDRICAL KNOB         |          | 17  | 52718R0003  | TUBE EXTERNAL 43MM                       |          |
| 9   | 4401040022 | SHOE RING                |          | 18  | M00604R0300 | SHOWER ARM                               |          |

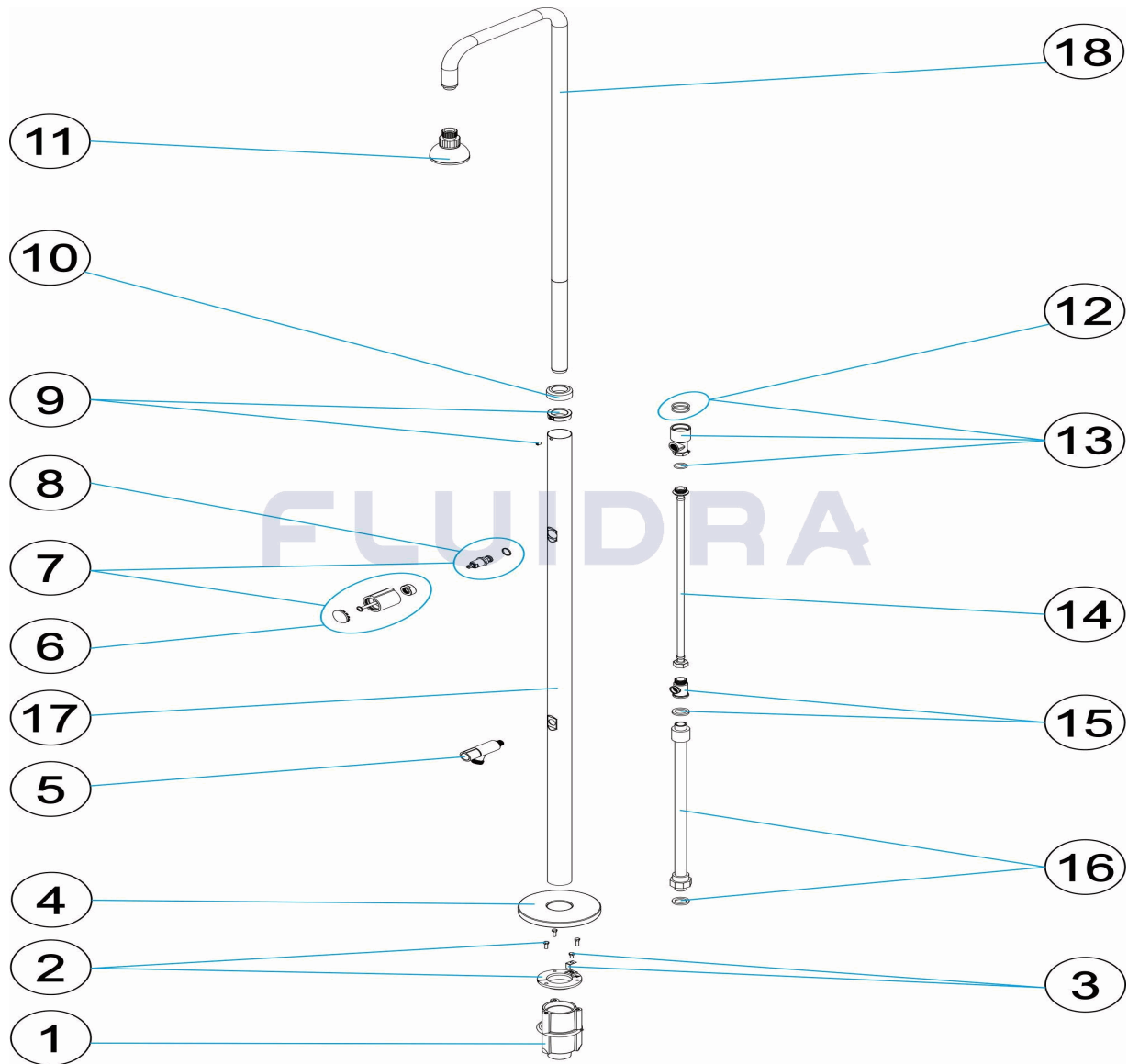
# ESPLOSO

REV.: 0  
 DATA: 27/04/2021  
 PAG.: 4/6

1421

CODICE **M00605**

DESCRIZIONE: **DOCCIA 1 SPRUZZATORE 1 VALVOLA E LAVAPIEDI D. 43**



**ITALIANO**

| POS | CODICE     | DESCRIZIONE                      | QUANTITA' | POS | CODICE      | DESCRIZIONE                         | QUANTITA' |
|-----|------------|----------------------------------|-----------|-----|-------------|-------------------------------------|-----------|
| 1   | 4401040109 | CORPO ANCORAGGIO DOCCIA          |           | 10  | 4401040106  | COPRIFLANGIA 43                     |           |
| 2   | 4401040108 | FISSAGGIO ANCORAGGIO DOCCIA D 43 |           | 11  | 4401040042  | SPRUZZATORE                         |           |
| 3   | 4401040903 | PRESA A TERRA                    |           | 12  | 4401040266  | SET DI 2 GIUNTA TORICA              |           |
| 4   | 4401040017 | COPERTURA INFERIORE DOCCIA D. 43 |           | 13  | 4401040110  | TUBO 1/2"                           |           |
| 5   | 4401040050 | RUBINETTO LAVAPIEDI              |           | 14  | 4401040048  | SPINOTTO 1/2" M - 1/2" H L=550 MM " |           |
| 6   | 4401040019 | ASSE VALVOLA                     |           | 15  | 4401040049  | T' 1/2" M.-1/4" H.-1/2" H "         |           |
| 7   | 4401040264 | SET MANOPOLA                     |           | 16  | 4401040215  | TUBO INFERIORE 1/2"                 |           |
| 8   | 4401040298 | POMELLO CICLINDRICO              |           | 17  | 52718R0003  | TUBO ESTERNO D.43                   |           |
| 9   | 4401040022 | ANELLO FISSAGGIO                 |           | 18  | M00604R0300 | BRACCIO DOCCIA                      |           |

# EINZELTEILE

ÜBER.: 0

1421

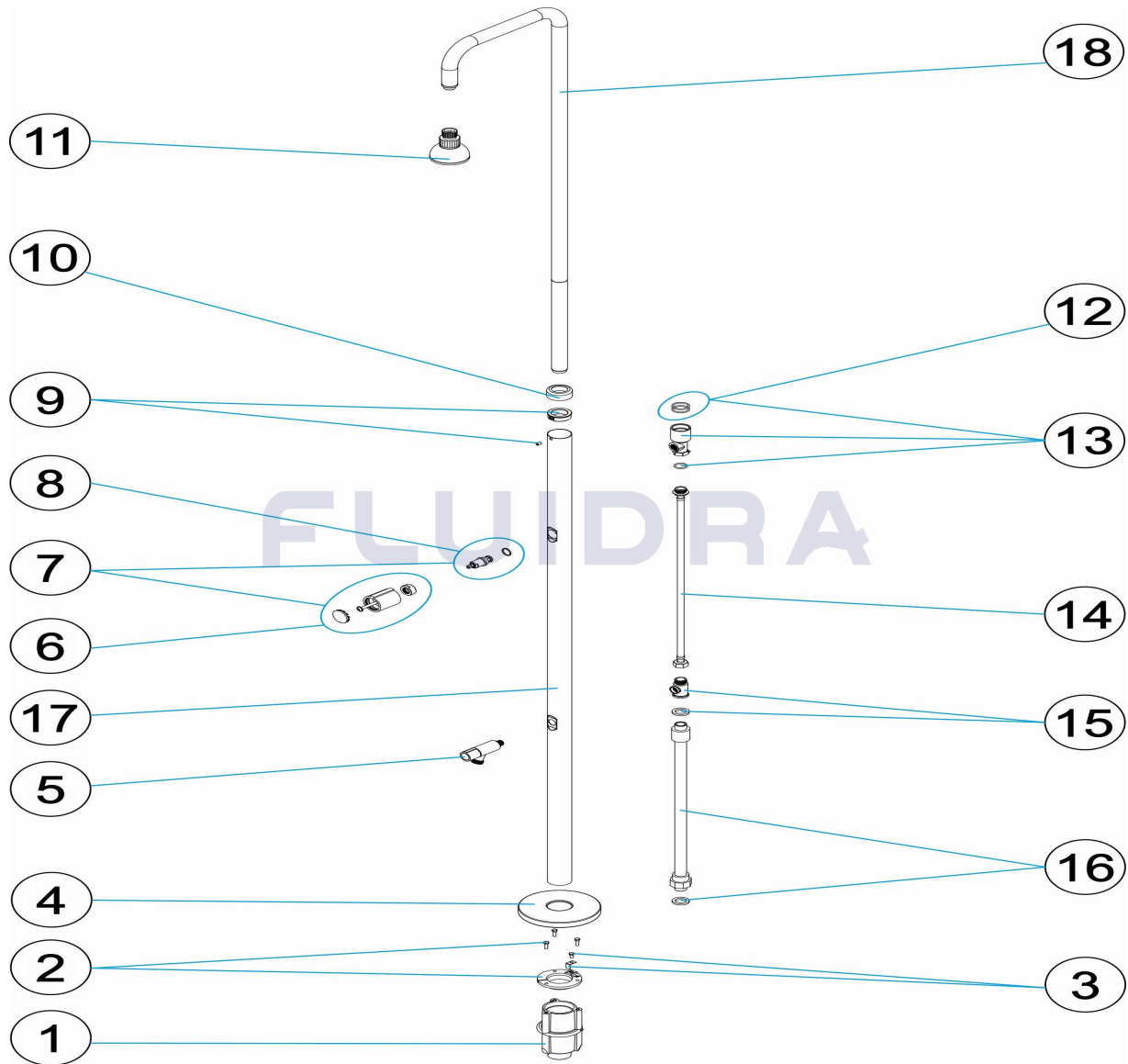
DATUM: 27/04/2021

BLATT: 5/6

CODE

**M00605**

BESCHREIBUNG: DUSCHE 1 DUSCHKOPF 1 VENTIL UND FUSSDUSCHE D.43



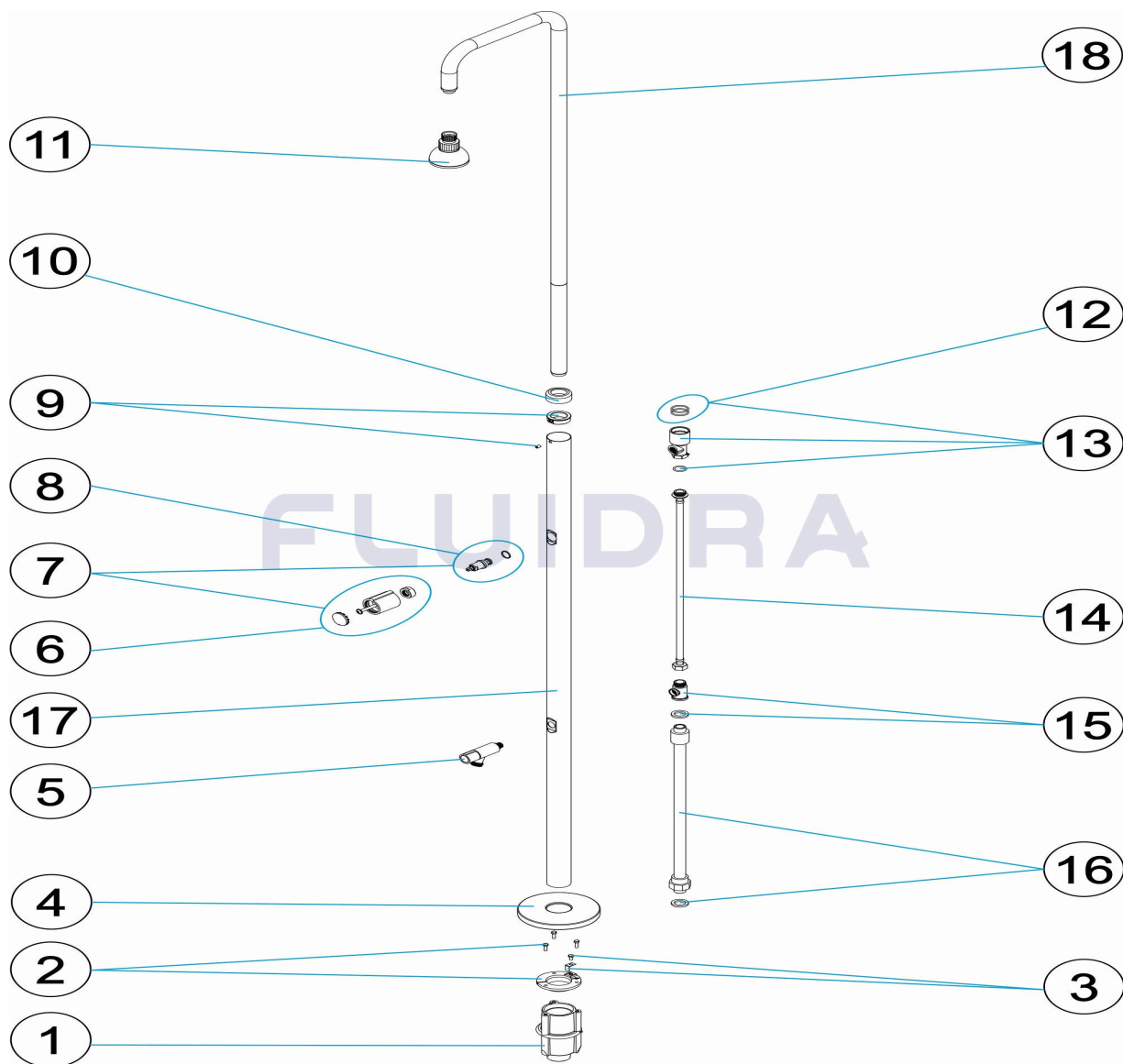
**DEUTSCH**

| POS | CODE       | BESCHREIBUNG                       | MENGE | POS | CODE        | BESCHREIBUNG                               | MENGE |
|-----|------------|------------------------------------|-------|-----|-------------|--|-------|
| 1   | 4401040109 | VERANKERUNG DUSCHEINHEIT           |       | 10  | 4401040106  | DEKO-ABSCHLUSSRING OBEN 43                 |       |
| 2   | 4401040108 | FIXIERUNG DUSCHVERANKERUNG 43      |       | 11  | 4401040042  | DUSCHKOPF                                  |       |
| 3   | 4401040903 | ERDUNG                             |       | 12  | 4401040266  | SET 2 O-RINGE                              |       |
| 4   | 4401040017 | ABSCHLUSSPLATTE UNTEN DUSCHE D. 43 |       | 13  | 4401040110  | ROHR 1/2"                                  |       |
| 5   | 4401040050 | WASSERHAHN FUSSDUSCHE              |       | 14  | 4401040048  | SCHLAUCHLEITUNG 1/2" NIPPEL - 1/2" MUF     |       |
| 6   | 4401040019 | VENTILACHSE                        |       | 15  | 4401040049  | T-STÜCK 1/2" NIPPEL - 1/4" MUFFE - 1/2" ML |       |
| 7   | 4401040264 | SET DREHGRIF DUSCHE                |       | 16  | 4401040215  | ROHR UNTEN 1/2"                            |       |
| 8   | 4401040298 | DREHGRIF ZYLINDRISCH               |       | 17  | 52718R0003  | AUSSENROHR D. 43 FUSSDUSCHE                |       |
| 9   | 4401040022 | FIXIERRING                         |       | 18  | M00604R0300 | DUSCHARM                                   |       |

CODIGO

**M00605**

DESCRIÇÃO: DUCHE 1 DIFUSOR 1 VÁLVULA E LAVA-PÉS D. 43


**PORTUGUES**

| POS | CODIGO     | DESCRIÇÃO                           | JANTIDADE | POS | CODIGO      | DESCRIÇÃO                        | JANTIDADE |
|-----|------------|-------------------------------------|-----------|-----|-------------|----------------------------------|-----------|
| 1   | 4401040109 | CORPO ÂNCORA CHUVEIRO               |           | 10  | 4401040106  | ANTIDERRAPANTE                   |           |
| 2   | 4401040108 | FIXAÇÃO ÂNCORA CHUVEIRO D 43        |           | 11  | 4401040042  | DIFUSOR                          |           |
| 3   | 4401040903 | LIGAÇÃO A TERRA                     |           | 12  | 4401040266  | CONJUNTO DE 2 JUNTAS TORICAS     |           |
| 4   | 4401040017 | PLACA ESTANQUE INFERIOR DUCHE D. 43 |           | 13  | 4401040110  | TUBO 1/2"                        |           |
| 5   | 4401040050 | TORNEIRA LAVA-PÉS                   |           | 14  | 4401040048  | MANGA 1/2" M - 1/2" H L=550 MM " |           |
| 6   | 4401040019 | EIXO VÁLVULA                        |           | 15  | 4401040049  | TÊ 1/2" M.-1/4" H.-1/2" H "      |           |
| 7   | 4401040264 | CJTO. PUXADOR                       |           | 16  | 4401040215  | TUBO INFERIOR 1/2"               |           |
| 8   | 4401040298 | MAÇANETA CILÍNDRICA                 |           | 17  | 52718R0003  | TUBO EXTERIOR D. 43              |           |
| 9   | 4401040022 | ANEL DE FIXAÇÃO                     |           | 18  | M00604R0300 | BRAÇO DUCHE                      |           |