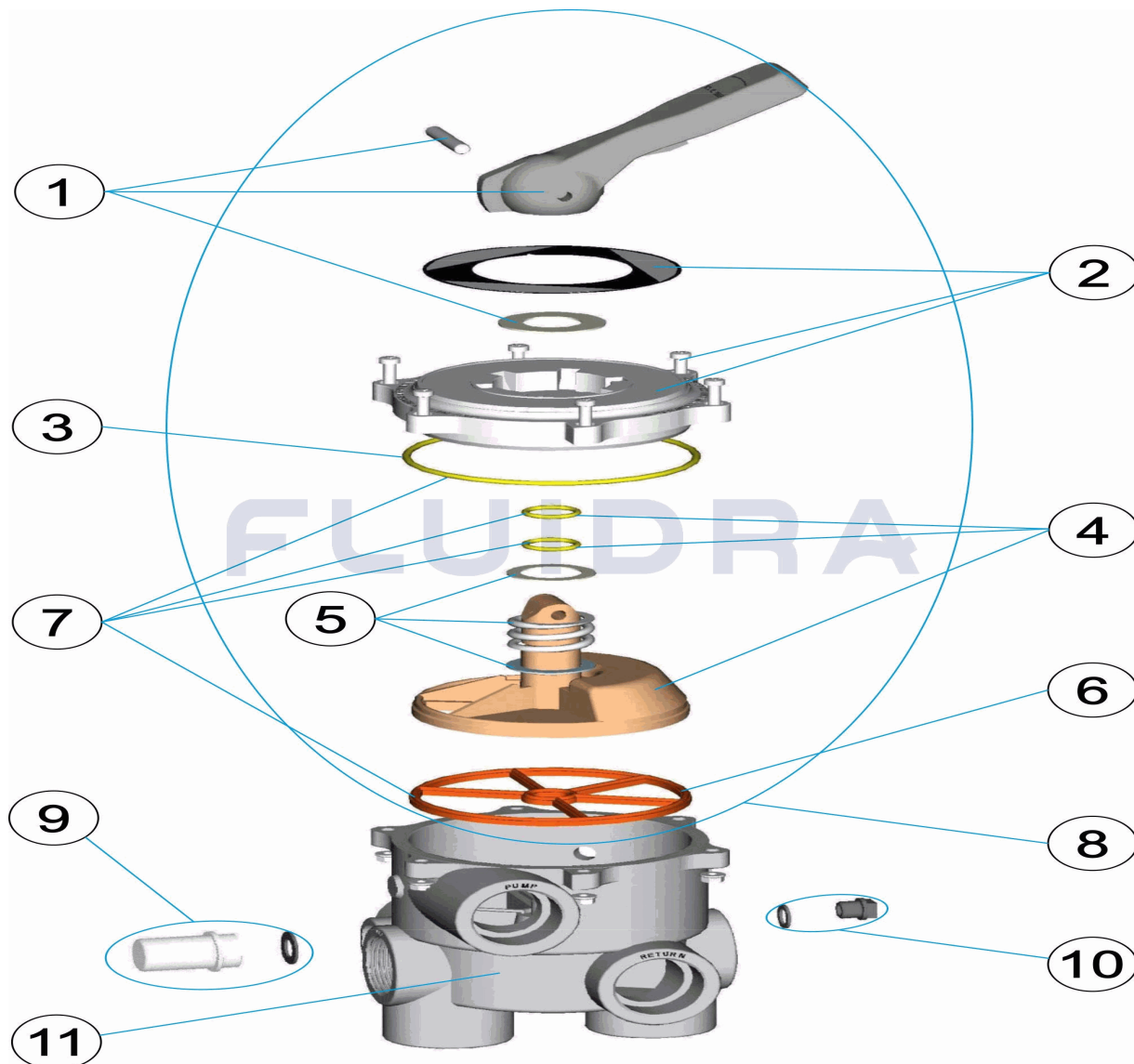


CODIGO **06595**

DESCRIPCION: **VALVULA SELECTORA 1 1/2"**

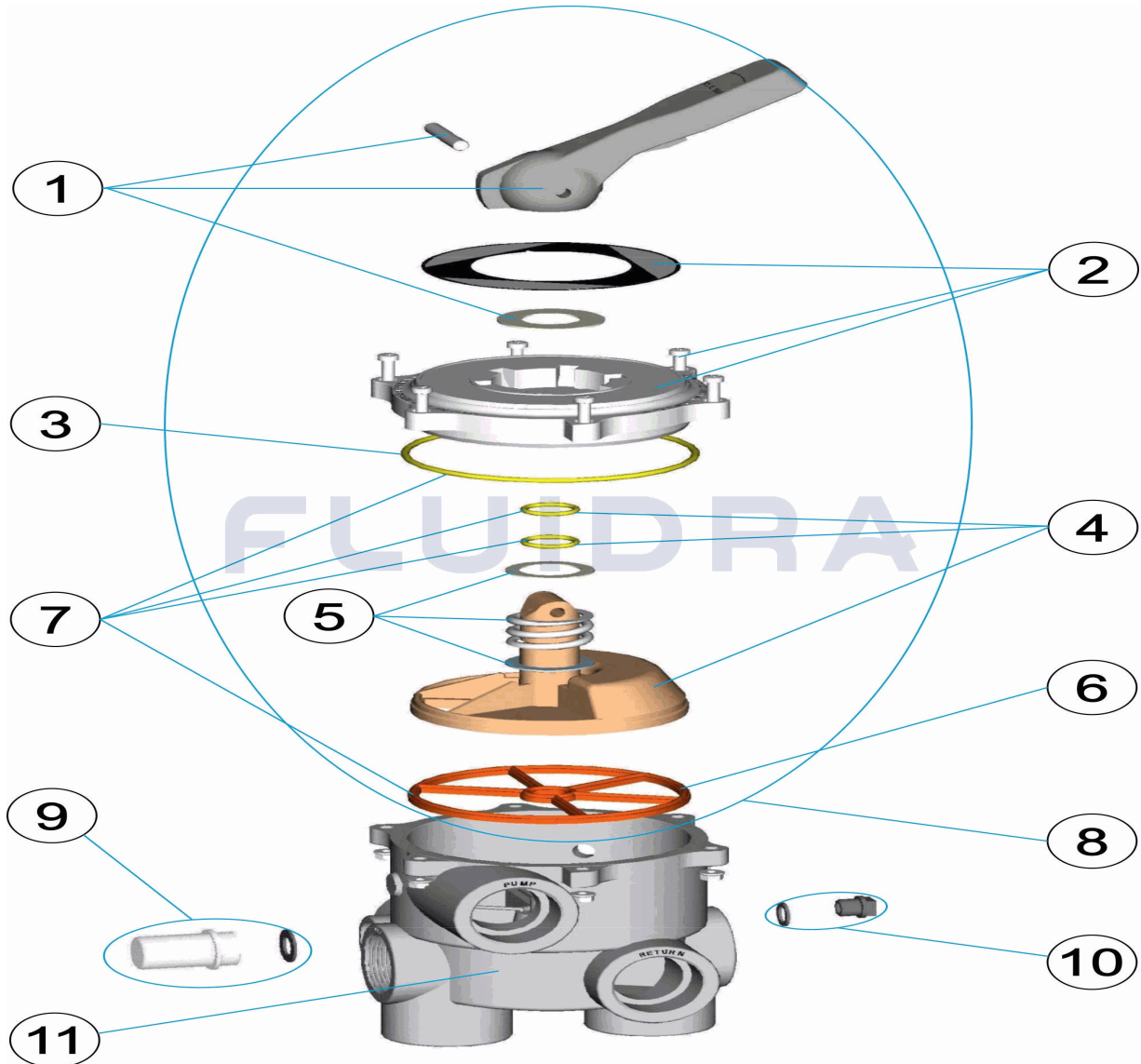


**ESPAÑOL**

POS	CODIGO	DESCRIPCION	CANTIDAD	POS	CODIGO	DESCRIPCION	CANTIDAD
1	4404120102	MANETA NEGRA 1 1/2'-2'		7	4404120107	JUNTAS VALVULA 1 1/2' NUEVA	
2	4404120088	TAPA VALVULA SELECTORA 1 1/2"		8	4404120112	TAPA DISTRIBUIDOR NEGRA 1 1/2' MNB/N/A	
3	4404120023	JUNTA TORICA TAPA 1 1/2"		9	4404120108	VISOR CON JUNTA	
4	4404120106	DISTRIBUIDOR CON JUNTAS 1 1/2' NUEVO		10	4404120081	TAPON 1/4"	
5	4404120105	RESORTE CON ARANDELAS		11	06595R0101	CUERPO VALVULA SELECTORA	
6	4404120071	JUNTA VALVULA SELECTORA 1 1/2"					

CODE 06595

DESCRIPTION: SÉLECTEUR 1 1/2"

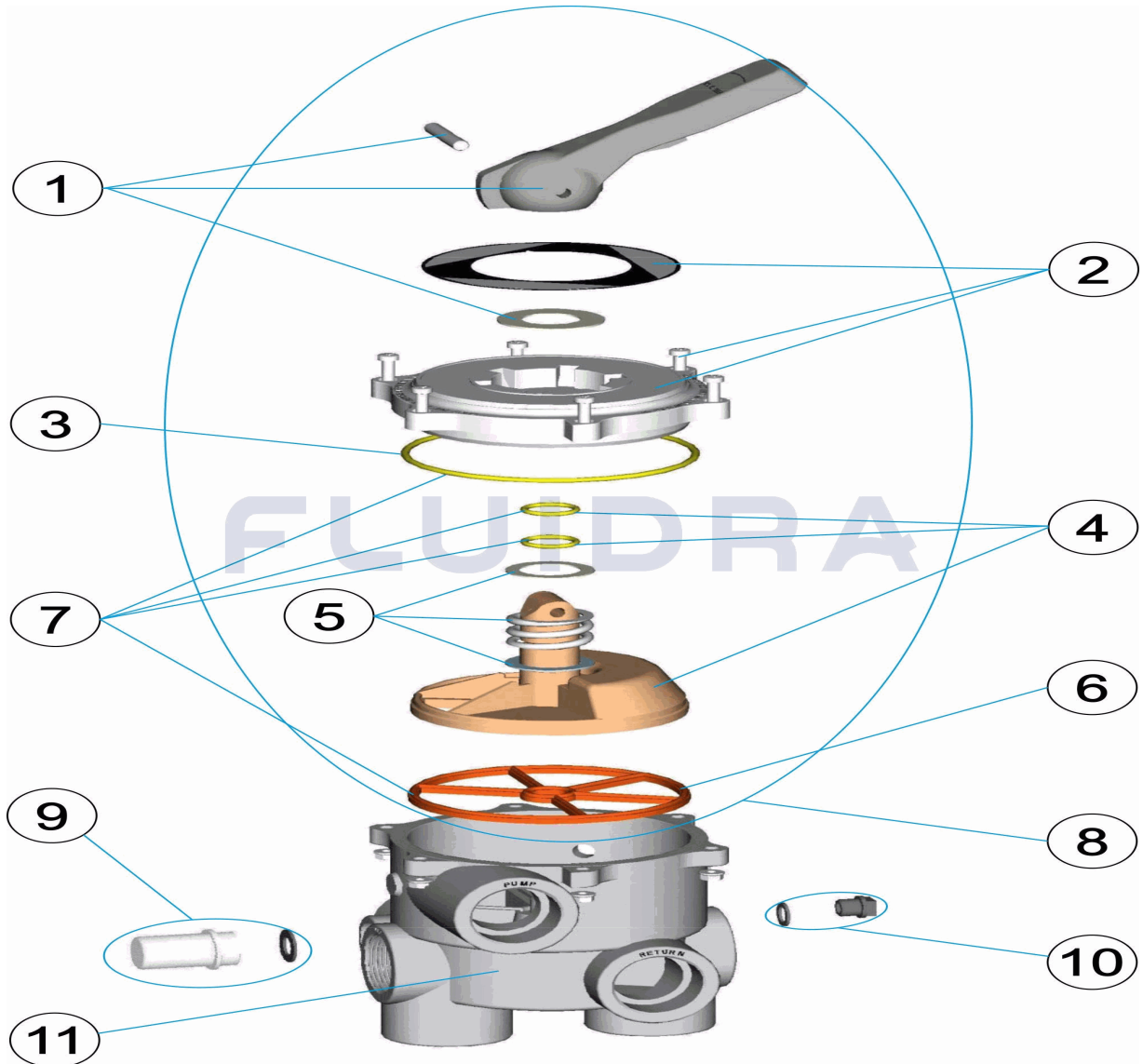


FRANCAIS

POS	CODE	DESCRIPTION	QUANTITE	POS	CODE	DESCRIPTION	QUANTITE
1	4404120102	POIGNEE NOIRE 1 1/2' ET 2'		7	4404120107	JOINTS 1 1/2' NOUVEAU MODELE	
2	4404120088	DESSUS DE VANNE 1 1/2"		8	4404120112	COUVERCLE NOIR ET BOISSEAU 1 1/2' MN	
3	4404120023	JOINT TORIQUE COUVERCLE 1 1/2"		9	4404120108	VOYANT ET JOINT	
4	4404120106	BOISSEAU ET JOINT DE VANNE NOUVEAU		10	4404120081	BOUCHON 1/4"	
5	4404120105	RESSORT ET RONDELLES		11	06595R0101	CORP DE VANNE DE SELECTION	
6	4404120071	JOINT VANNE 1 1/2"					

CODE **06595**

DESCRIPTION: **MULTIPORT VALVE 1 1/2"**

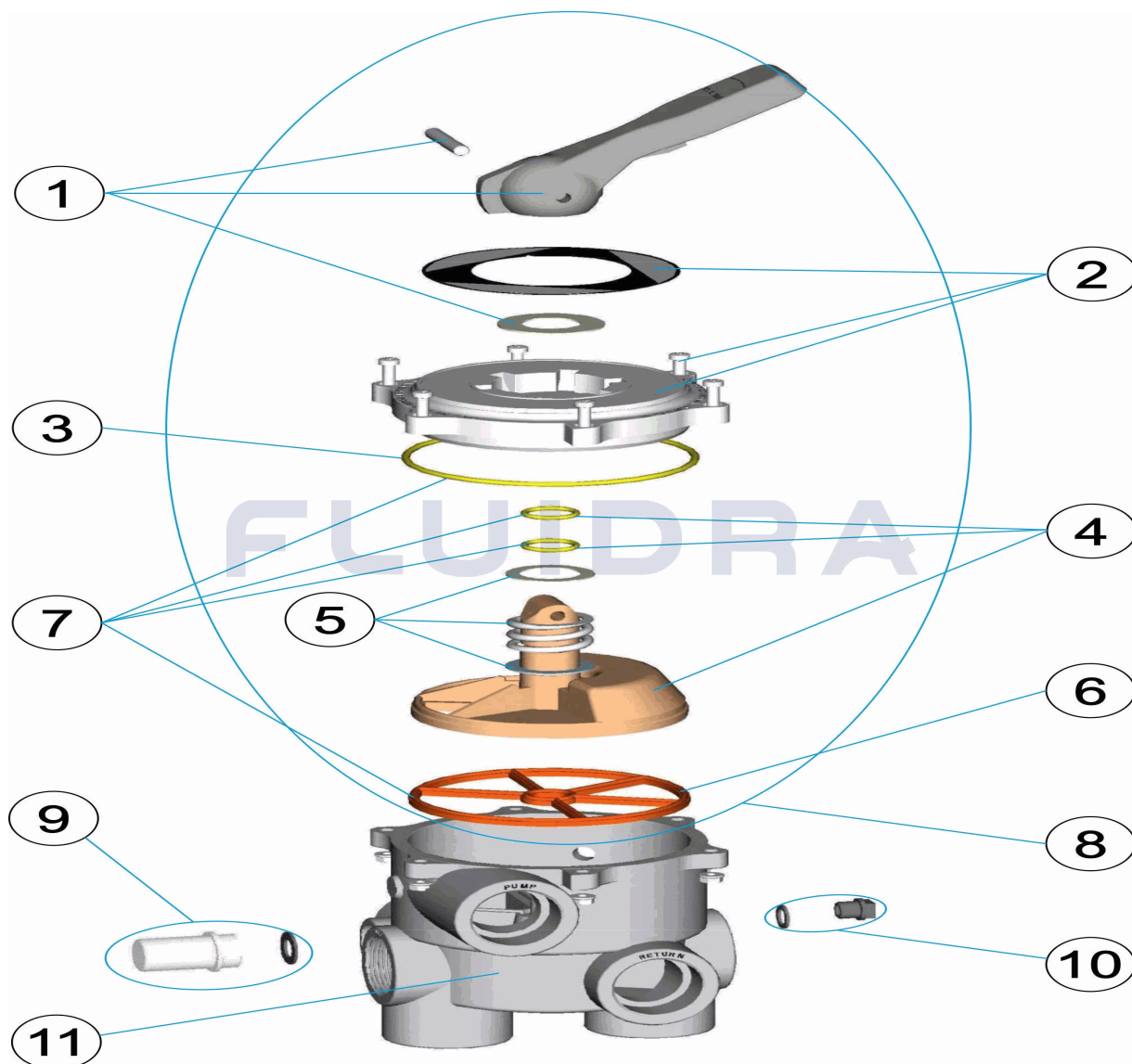


**ENGLISH**

POS	CODE	DESCRIPTION	QUANTITY	POS	CODE	DESCRIPTION	QUANTITY
1	4404120102	BLACK HANDLE 11/2'-2'		7	4404120107	GASKETS NEW VALVE 1 1/2'	
2	4404120088	COVERS SELECTOR VALVE 1 1/2"		8	4404120112	TOP ASSEMBLY BLACK 1 1/2' MNB/N/A	
3	4404120023	1 1/2" LID 'O' RIN "		9	4404120108	VISOR WITH SEAL	
4	4404120106	DISTRIBUTOR WITH GASKETS 1 1/2'		10	4404120081	CAP 1/4"	
5	4404120105	SPRING WITH WASHERS		11	06595R0101	VALVE BODY	
6	4404120071	1 1/2" MULTIPORT VALVE GASKET					

CODICE **06595**

DESCRIZIONE: **VALVOLA SELETRICE 1 1/2"**

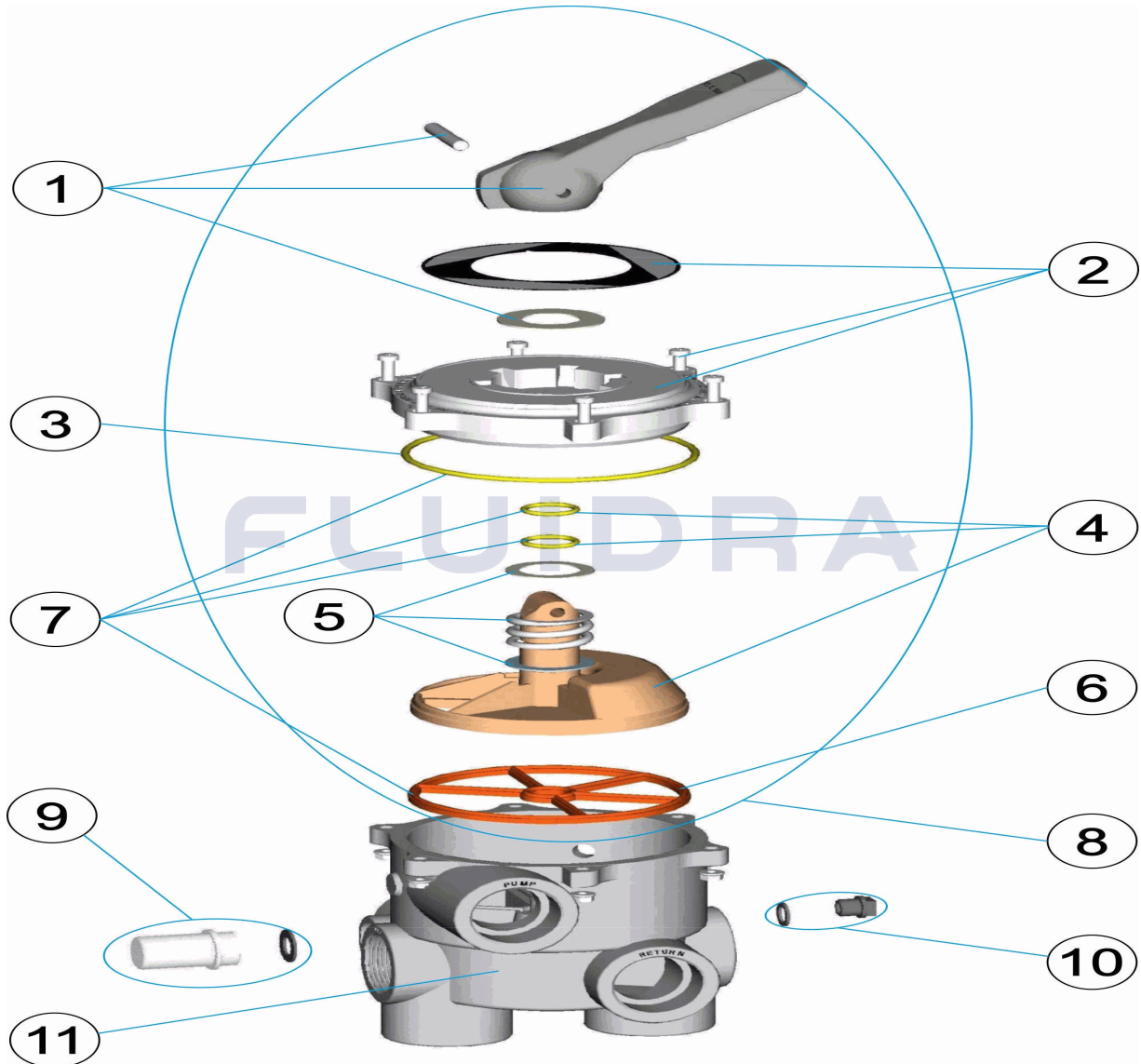


**ITALIANO**

POS	CODICE	DESCRIZIONE	QUANTITA'	POS	CODICE	DESCRIZIONE	QUANTITA'
1	4404120102	MANIGLIA NERA 1 1/2" - 2'		7	4404120107	GUARNIZIONI VALVOLA 1 1/2' NUOVO	
2	4404120088	COPERCHIO VALVOLA 1 1/2"		8	4404120112	COPERCHIO DI DISTRIBUZIONE NERO 1 1/2"	
3	4404120023	O-RING COPERCHIO 1 1/2"		9	4404120108	VISORE CON GUARNIZIONE	
4	4404120106	DISTRIBUTORE CON GUARNIZIONI 1 1/2" N		10	4404120081	TAPPO 1/4"	
5	4404120105	MOLLA CON RONDELLA		11	06595R0101	CORPO VALVOLA SELETRICE	
6	4404120071	GUARNIZIONE VALVOLA 1 1/2"					

CODE **06595**

BESCHREIBUNG: **MEHRWEGVENTIL 1 1/2"**

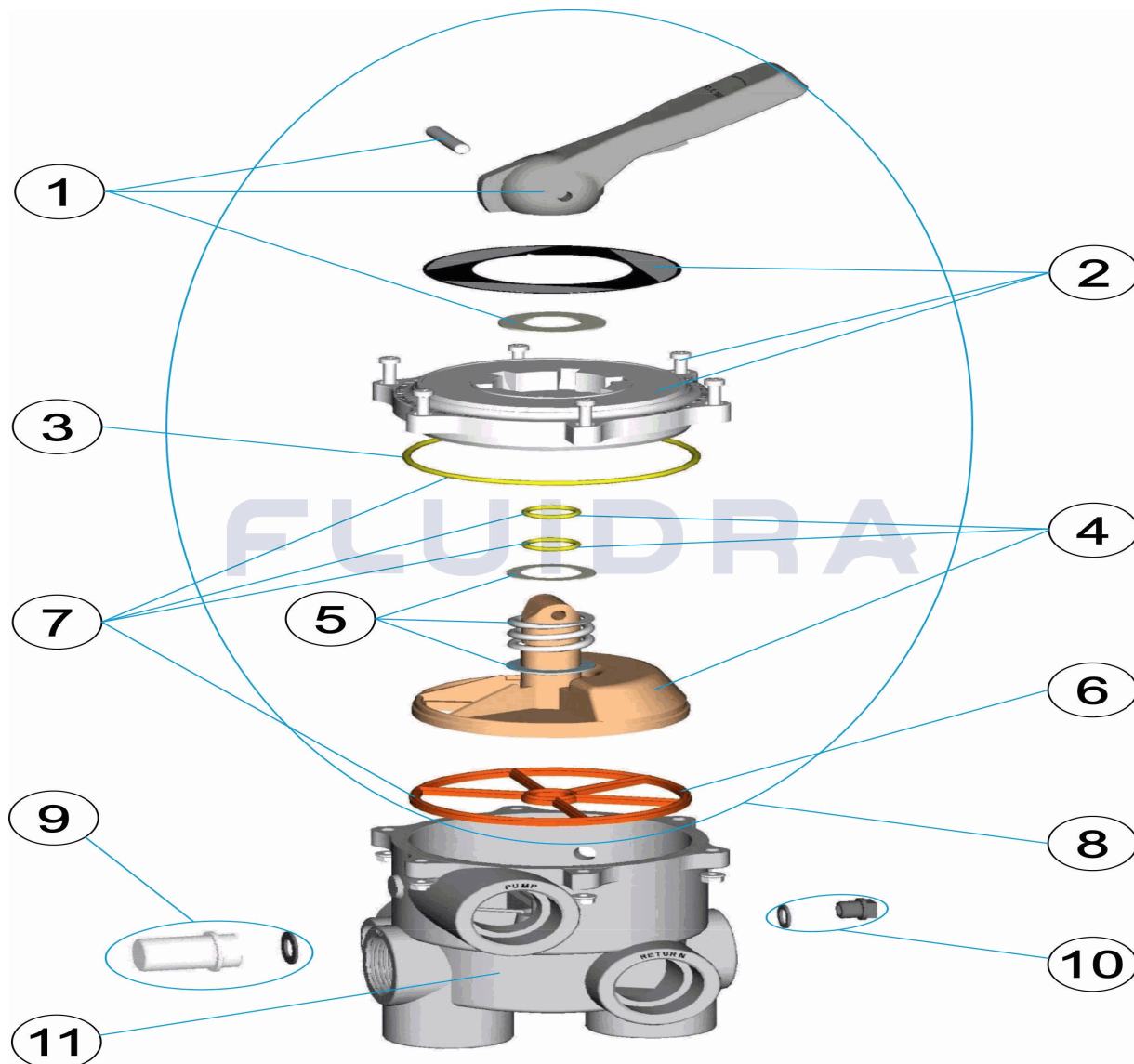


**DEUTSCH**

POS	CODE	BESCHREIBUNG	MENGE	POS	CODE	BESCHREIBUNG	MENGE
1	4404120102	GRIF F SCHWARZ 1 1/2' - 2'		7	4404120107	VENTILDICHTUNGEN 1 1/2' NEUVERSION	
2	4404120088	ABDECKUNG MEHRWEGVENTIL 1 1/2"		8	4404120112	VERTEILERDECKEL SCHWARZ 1 1/2' MNB/Λ	
3	4404120023	O-RING ABDECKUNG 1 1/2"		9	4404120108	SCHAUGLAS UND DICHTUNG	
4	4404120106	VERTEILER UND DICHTUNGEN 1 1/2' NEUΛ		10	4404120081	STOPFEN 1/4"	
5	4404120105	FEDER MIT UNTERLEGSCHIEBEN		11	06595R0101	GEHÄUSE MEHRWEGVENTIL	
6	4404120071	DICHTUNG MEHRWEGVENTIL 1 1/2"					

CODIGO **06595**

DESCRIÇÃO: **VÁLVULA SELECTORA 1 1/2"**



**PORTUGUES**

POS	CODIGO	DESCRIÇÃO	JANTIDADE	POS	CODIGO	DESCRIÇÃO	JANTIDADE
1	4404120102	MANIPULO PRETO 1 1/2'-2'		7	4404120107	JUNTAS VÁLVULA 1 1/2'	
2	4404120088	TAMPA VALVULA 1 1/2"		8	4404120112	TAMPA DISTRIBUIDORA PRETA 1 1/2' MNB/Λ	
3	4404120023	JUNTA TÓRICA TAMPA 1 1/2"		9	4404120108	VISOR COM JUNTA	
4	4404120106	DISTRIBUIDOR COM JUNTAS 1 1/2"		10	4404120081	TAMPÃO 1/4"	
5	4404120105	MOLA COM ANILHAS		11	06595R0101	CORPO VALVULA SELECTORA	
6	4404120071	JUNTA VALVULA 1 1/2"					