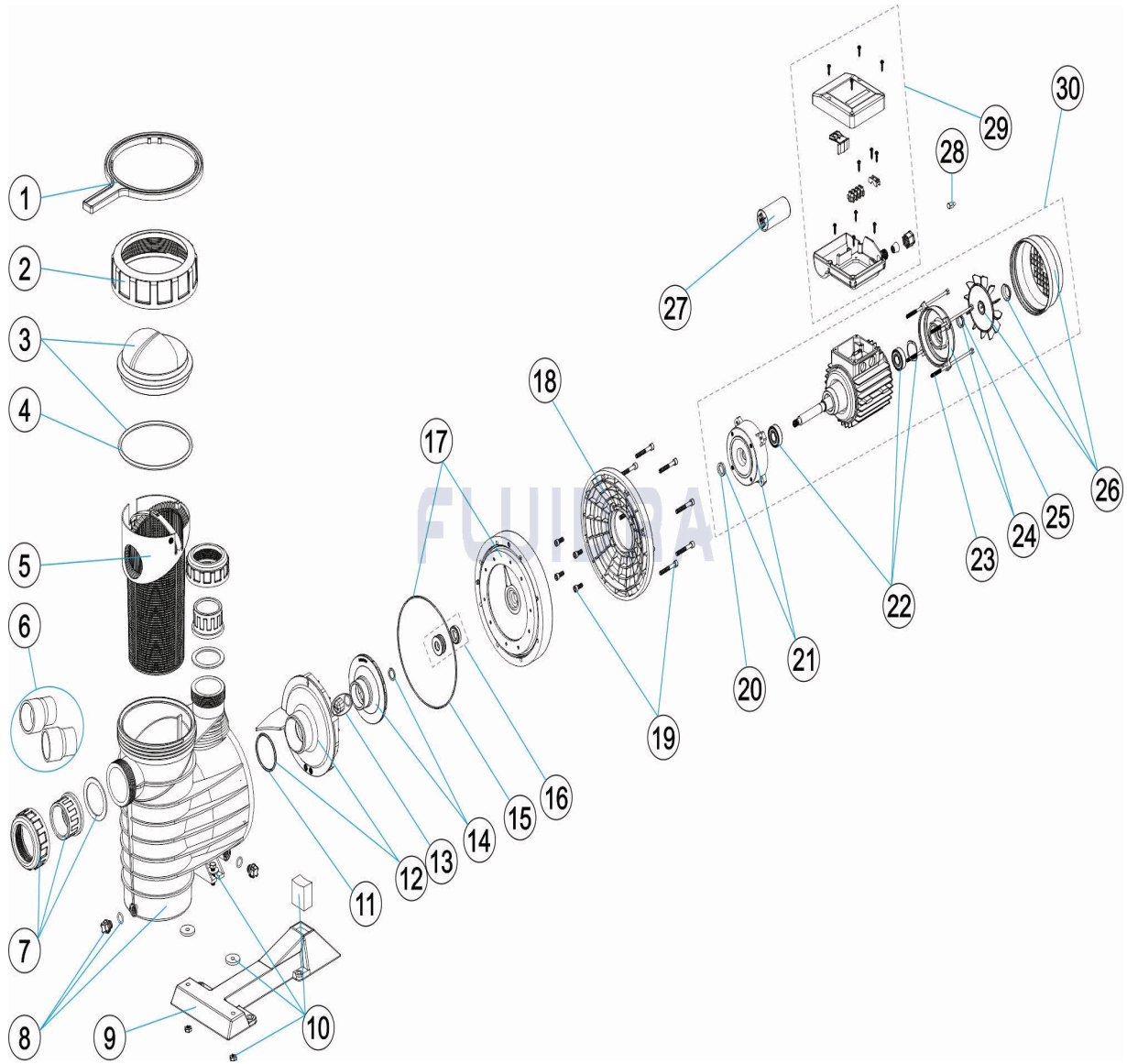


CODIGO 69221, 69222, 69223, 69224, 69225, 69226, 69227, 69228, 69229, 69230, 69231, 69232

DESCRIPCION: BOMBAS L.F.M.



ESPAÑOL

POS	CODIGO	DESCRIPCION	CANTIDAD	POS	CODIGO	DESCRIPCION	CANTIDAD
1	4404130103	LLAVE TUERCA FILTRO		12	* 4405010115	DIFUSOR <=0,75 HP	
2	4405012201	TUERCA TAPA PREFILTRO		12	* 4405010116	DIFUSOR 1 HP - 2 HP	
3	4405012202	TAPA PREFILTRO CON JUNTA		12	* 4405010117	DIFUSOR 2,5 - 3 HP	
4	4405010178	JUNTA TORICA D. 151,7X6,99		13	* 4405010134	TAPÓN RODETE M8 IZQUIERDA	
5	4405010105	CESTO PREFILTRO		14	* 4405010591	RODETE ½ (II) HP	
6	* 4405010717	ACCESORIOS ENLACE 3 HP		14	* 4405010592	RODETE ½ (III) HP	
7	* 4405010106	ACCESORIOS ENLACE <= 1 HP		14	* 4405010750	RODETE ¾ CV II	
7	* 4405010107	ACCESORIOS ENLACE 1,5 HP - 2,5 HP		14	* 4405010751	RODETE ¾ CV III	
8	4405012203	CUERPO BOMBA		14	* 4405010752	RODETE 1 CV II	
9	4405010114	PIE BOMBA 1,5 -3 HP		14	* 4405010753	RODETE 1 CV III	
10	* 4405010111	UNIÓN HIDRÁULICA PIE <= 0,5 HP		14	* 4405010754	RODETE 1 ½ CV II	
10	* 4405010112	UNIÓN HIDRÁULICA PIE 0,75 - 1,5 HP		14	* 4405010755	RODETE 1 ½ CV III	

*** NOTA OBSERVACIONES**

CODIGO **69221, 69222, 69223, 69224, 69225, 69226, 69227, 69228, 69229, 69230, 69231, 69232**

DESCRIPCION: BOMBAS L.F.M.

10	* 4405010113	UNIÓN HIDRÁULICA PIE 1,5 HP - 3 HP	14	* 4405010756	RODETE 2 CV II
10	* 4405010180	UNION HIDRAULICA PIE 3 HP II	14	* 4405010757	RODETE 2 CV III
11	4405010161	JUNTA TORICA D. 56,7X3,5	14	* 4405010601	RODETE 3 (II) HP
14	* 4405010602	RODETE 3 (III) HP	26	* 4405010148	CJTO. VENTILADOR-TAPA 1,5 - 2 - 3 HP III
15	4405010160	JUNTA BRIDA MOTOR	26	* 4405010170	CJTO. VENTILADOR-TAPA 3 HP II
16	4405010118	JUNTA MECÁNICA	27	* 4405010149	CONDENSADOR 12 UF 1/2 CV
17	4405011113	BRIDA CIERRE MECANICO	27	* 4405020121	CONDENSADOR 14 UF 3/4 CV
18	* 4405011114	BRIDA MOTOR (0,5 - 1 HP)	27	* 4405020122	CONDENSADOR 16 UF 1 CV
18	* 4405011115	BRIDA MOTOR (1,5 - 3 HP)	27	* 4405010150	CONDENSADOR 18 UF 1,5 CV
19	4405011116	TORNILLOS UNION MOTOR	27	* 4405010174	CONDENSADOR 32 UF 2 CV
20	4405010162	ARANDELA DISTANCIADORA (1/2-3/4-1-1,5-	27	* 4405010175	CONDENSADOR 40 UF 2,5-3 CV
21	* 4405012212	TAPA DELANTERA MOTOR ½ CV	28	* 4405012220	PROTECTOR TERMICO REARMABLE (1 1/2
21	* 4405012213	TAPA DELANTERA MOTOR 3/4-1,5 CV	28	* 4405012221	PROTECTOR TERMICO REARMABLE (2 CV
21	* 4405012214	TAPA DELANTERA MOTOR 2-3 CV	28	* 4405012053	PROTECTOR TERMICO REARMABLE (2,5-3l
21	* 4405012215	BRIDA MEC. C.90 B14 RED. C/CAJERA D52	29	* 4405010154	CJTO. CAJA BORNES C. 63-71 II
22	* 4405010135	RODAMIENTO MOTOR < 1 HP	29	* 4405010155	CJTO. CAJA BORNES (C 80-90) II (ANDIA)
22	* 4405010136	RODAMIENTO MOTOR 1,5 HP - 3 HP	29	* 4405010156	CJTO. CAJA BORNES C.63-71 III
22	* 4405010171	CJTO. RODAMIENTO 6205 2RS 3,5HP	29	* 4405010157	CJTO. CAJA BORNES C.80-90 III
23	* 4405010143	VARILLAS MOTOR C. 63	30	* 20597R0475	MOTOR 1/2 HP II
23	* 4405010144	VARILLAS MOTOR 0,75 - 1 HP	30	* 20598R0475	MOTOR 1/2 HP III
23	* 4405010145	VARILLAS MOTOR 1,5 - 3 HP III	30	* 20599R0475	MOTOR 3/4 HP II
23	* 4405010169	VARILLAS MOTOR (90) 3 HP II	30	* 20600R0475	MOTOR 3/4 HP III
24	* 4405012216	TAPA TRASERA 1/2 CV	30	* 20601R0475	MOTOR 1 HP II
24	* 4405012217	TAPA TRASERA 3/4-1-1,5 CV	30	* 20602R0475	MOTOR 1 HP III
24	* 4405012218	TAPA TRASERA 2-3 CV	30	* 20603R0575	MOTOR 1,5 HP II
24	* 4405012219	TAPA MOTOR MEC. C90 C/CAJERA D.52	30	* 20604R0575	MOTOR 1,5 HP III
25	* 4405010163	ARANDELA DEFLECTORA C,71 1/2-1 HP	30	* 20605R0475	MOTOR 2 HP II
25	* 4405010164	ARANDELA DEFLECTORA C,80 1,5-3 HP	30	* 20606R0475	MOTOR 2 HP III
26	* 4405010146	CJTO. VENTILADOR-TAPA 0,5 HP	30	* 22341R0475	MOTOR 3 HP II
26	* 4405010147	CJTO. VENTILADOR-TAPA 0,75 - 1 HP	30	* 20607R0475	MOTOR 3 HP III

CODIGO **69221, 69222, 69223, 69224, 69225, 69226, 69227, 69228, 69229, 69230, 69231, 69232**

DESCRIPCION: BOMBAS L.F.M.

OBSERVACIONES

POS	CODIGO	OBSERVACIONES
6	* 4405010717	PARA: 69231, 69232
7	* 4405010106	PARA: 69221, 69222, 69223, 69224, 69225, 69226
7	* 4405010107	PARA: 69227, 69228, 69229, 69230, 69231, 69232
10	* 4405010111	PARA: 69221, 69222
10	* 4405010112	PARA: 69222, 69223, 69224, 69225, 69226
10	* 4405010113	PARA: 69227, 69228, 69229, 69230, 69232
10	* 4405010180	PARA: 69231
12	* 4405010115	PARA: 69221, 69222, 69223, 69224
12	* 4405010116	PARA: 69225, 69226, 69227, 69228
12	* 4405010117	PARA: 69229, 69230, 69231, 69232
13	* 4405010134	PARA: 69222, 69224, 69226, 69228, 69230, 69232
14	* 4405010591	PARA: 69221
14	* 4405010592	PARA: 69222
14	* 4405010750	PARA: 69223
14	* 4405010751	PARA: 69224
14	* 4405010752	PARA: 69225
14	* 4405010753	PARA: 69226
14	* 4405010754	PARA: 69227
14	* 4405010755	PARA: 69228
14	* 4405010756	PARA: 69229
14	* 4405010757	PARA: 69230
14	* 4405010601	PARA: 69231
14	* 4405010602	PARA: 69232
18	* 4405011114	PARA: 69221, 69222, 69223, 69224, 69225, 69226
18	* 4405011115	PARA: 69227, 69228, 69229, 69230, 69231, 69232
21	* 4405012212	PARA: 69221, 69222
21	* 4405012213	PARA: 69223, 69224, 69225, 69226, 69227, 69228
21	* 4405012214	PARA: 69229, 69230, 69232
21	* 4405012215	PARA: 69231
22	* 4405010135	PARA: 69221, 69222, 69223, 69224, 69225, 69226
22	* 4405010136	PARA: 69227, 69228, 69229, 69230, 69232
22	* 4405010171	PARA: 69231
23	* 4405010143	PARA: 69221, 69222
23	* 4405010144	PARA: 69223, 69224, 69225, 69226
23	* 4405010145	PARA: 69227, 69228, 69229, 69230, 69232
23	* 4405010169	PARA: 69231
24	* 4405012216	PARA: 69221, 69222
24	* 4405012217	PARA: 69223, 69224, 69225, 69226
24	* 4405012218	PARA: 69227, 69228, 69229, 69230, 69232
24	* 4405012219	PARA: 69231
25	* 4405010163	PARA: 69221, 69222, 69223, 69224, 69225, 69226
25	* 4405010164	PARA: 69227, 69228, 69229, 69230, 69231, 69232
26	* 4405010146	PARA: 69221, 69222

*** NOTA OBSERVACIONES**

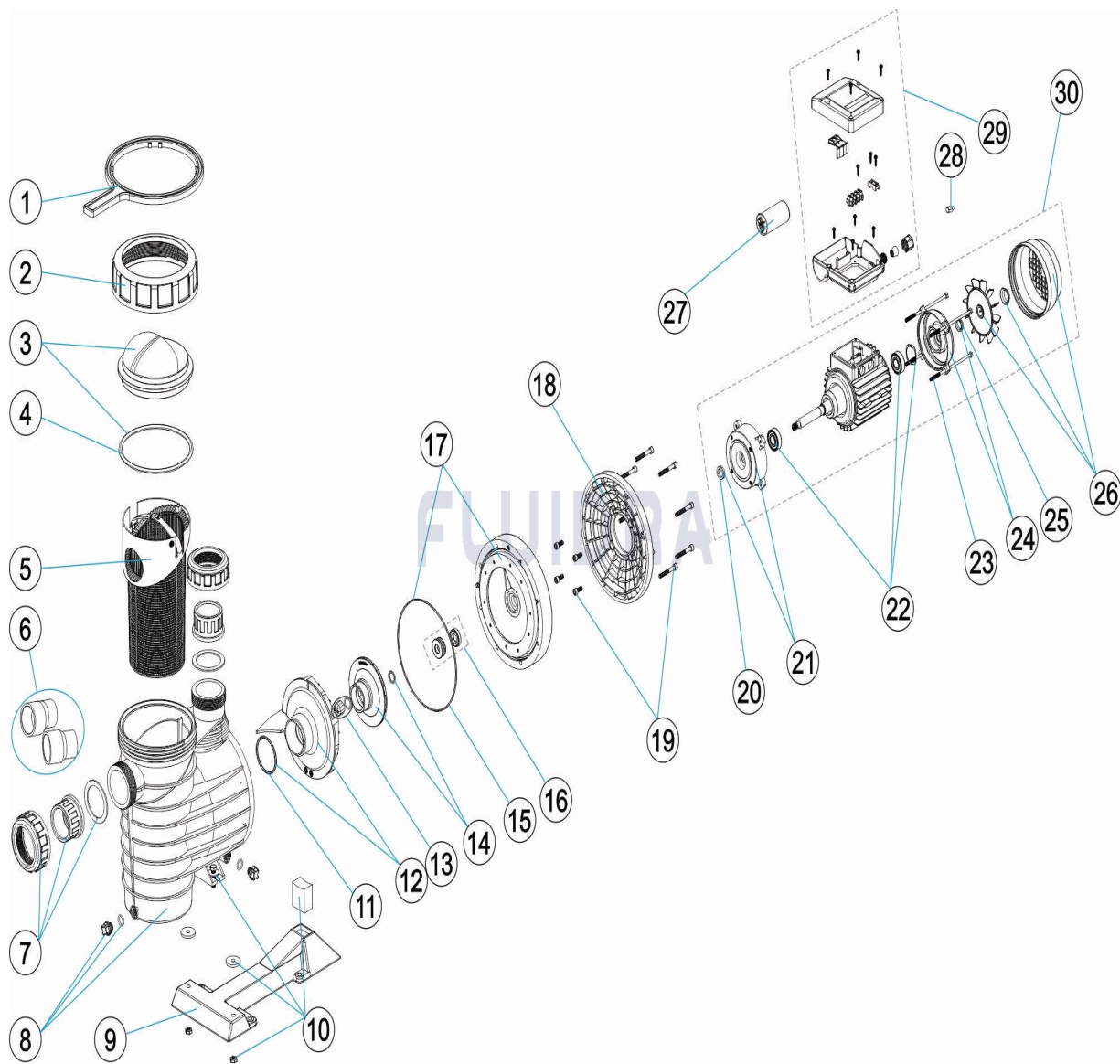
CODIGO **69221, 69222, 69223, 69224, 69225, 69226, 69227, 69228, 69229, 69230, 69231, 69232**

DESCRIPCION: BOMBAS L.F.M.

26	* 4405010147	PARA: 69223, 69224, 69225, 69226
26	* 4405010148	PARA: 69227, 69228, 69229, 69230, 69232
26	* 4405010170	PARA: 69231
27	* 4405010149	PARA: 69221, 69222
27	* 4405020121	PARA: 69223, 69224
27	* 4405020122	PARA: 69225, 69226
27	* 4405010150	PARA: 69227, 69228
27	* 4405010174	PARA: 69229, 69230
27	* 4405010175	PARA: 69231, 69232
28	* 4405012220	PARA: 69227
28	* 4405012221	PARA: 69229
28	* 4405012053	PARA: 69231
29	* 4405010154	PARA: 69221, 69223, 69225
29	* 4405010155	PARA: 69227, 69229, 69231
29	* 4405010156	PARA: 69222, 69224, 69226
29	* 4405010157	PARA: 69228, 69230, 69232
30	* 20597R0475	PARA: 69221
30	* 20598R0475	PARA: 69222
30	* 20599R0475	PARA: 69223
30	* 20600R0475	PARA: 69224
30	* 20601R0475	PARA: 69225
30	* 20602R0475	PARA: 69226
30	* 20603R0575	PARA: 69227
30	* 20604R0575	PARA: 69228
30	* 20605R0475	PARA: 69229
30	* 20606R0475	PARA: 69230
30	* 22341R0475	PARA: 69231
30	* 20607R0475	PARA: 69232

CODE 69221, 69222, 69223, 69224, 69225, 69226, 69227, 69228, 69229, 69230, 69231, 69232

DESCRIPTION: POMPE L.F.M.



FRANCAIS

POS	CODE	DESCRIPTION	QUANTITE	POS	CODE	DESCRIPTION	QUANTITE
1	4404130103	CLE ECROU DE FILTRE		12	* 4405010115	DIFFUSEUR <=0,75 HP	
2	4405012201	ECROU COUVERCLE PREFILTRE		12	* 4405010116	DIFFUSEUR 1 HP - 2 HP	
3	4405012202	COUVERCLE PREFILTRE AVEC JOINT		12	* 4405010117	DIFFUSEUR 2,5 - 3 HP	
4	4405010178	JOINT TORIQUE D 151,7X6,99		13	* 4405010134	BOUCHON BOUT AXE M8 IZQ.	
5	4405010105	PANIER PRÉFILTRE		14	* 4405010591	TURBINE ½ (II) HP	
6	* 4405010717	RACCORDS UNION 3 HP		14	* 4405010592	TURBINE ½ (III) HP	
7	* 4405010106	RACCORDS UNION <= 1 HP		14	* 4405010750	TURBINE 3/4 HP II	
7	* 4405010107	RACCORDS UNION 1,5 HP - 2,5 HP		14	* 4405010751	TURBINE 3/4 HP III	
8	4405012203	CORPS POMPE		14	* 4405010752	TURBINE 1 CV II	
9	4405010114	SOCLE POMPE 1,5 -3 HP		14	* 4405010753	TURBINE 1 CV III	
10	* 4405010111	RACCORD HYDRAULIQUE DE PIED <= 0,5		14	* 4405010754	TURBINE 1 1/2 CV II	
10	* 4405010112	RACCORD HYDRAULIQUE DE PIED 0,75 - 1		14	* 4405010755	TURBINE 1 1/2 CV II	

CODE **69221, 69222, 69223, 69224, 69225, 69226, 69227, 69228, 69229, 69230, 69231, 69232**

DESCRIPTION: **POMPE L.F.M.**

10	* 4405010113	RACCORD HYDRAULIQUE DE PIED 1,5 HP	14	* 4405010756	TURBINE 2 HP II
10	* 4405010180	RACCORD HYDRAULIQUE DE PIED 3 HP II	14	* 4405010757	TURBINE 2 HP III
11	4405010161	JOINT TORIQUE D 56,7X3,5	14	* 4405010601	TURBINE 3 (II) HP
14	* 4405010602	TURBINE 3 (III) HP	26	* 4405010148	ENSEMBLE COUVERCLE VENTILATEUR 1,5
15	4405010160	JOINT FLASQUE ACCOUP. MOTEUR	26	* 4405010170	ENSEMBLE COUVERCLE VENTILATEUR 3 F
16	4405010118	GARNITURE MÉCANIQUE	27	* 4405010149	CONDENSATEUR 12 UF 1/2 CV
17	4405011113	BRIDA GARNITURE MÉCANIQUE	27	* 4405020121	CONDENSATEUR 14 UF 3/4 CV
18	* 4405011114	FLASQUE ACCOUP. MOTEUR (0,5 - 1 HP)	27	* 4405020122	CONDENSATEUR 16 UF 1 CV
18	* 4405011115	FLASQUE ACCOUP. MOTEUR (1,5 - 3 HP)	27	* 4405010150	CONDENSATEUR 18 UF
19	4405011116	VIS MOTEUR	27	* 4405010174	CONDENSATEUR 32 ?F 2 CV
20	4405010162	JOINT RAMASSE GOUTTES (1/2-3/4-1-1,5-2	27	* 4405010175	CONDENSATEUR 40 ?F 2,5-3 CV
21	* 4405012212	COUVERCLE AXE MOTEUR ½ HP	28	* 4405012220	PROTECTEUR THERMIQUE À RÉARMEMEN
21	* 4405012213	COUVERCLE AXE MOTEUR 3/4-1,5 HP	28	* 4405012221	PROTECTEUR THERMIQUE À RÉARMEMEN
21	* 4405012214	COUVERCLE AXE MOTEUR 2-3HP	28	* 4405012053	PROTECTEUR THERMIQUE À RÉARMEMEN
21	* 4405012215	FLASQUE MEC. C90	29	* 4405010154	ENSEMBLE BOITIER CONNEXION C. 63-71 I
22	* 4405010135	ROULEMENT MOTEUR < 1 HP	29	* 4405010155	ENSEMBLE BOITIER CONNEXION (C 80-90)
22	* 4405010136	ROULEMENT MOTEUR 1,5 HP - 3 HP	29	* 4405010156	COUVERCLE BORNIER C 63-71 III
22	* 4405010171	ENSEMBLE ROULEMENT 6205 2RS 3,5HP	29	* 4405010157	ENSEMBLE BOITIER CONNEXION C.80-90 II
23	* 4405010143	TIRANTS D'ACCOUPLLEMENT MOTEUR C. €	30	* 20597R0475	MOTEUR 1/2 HP II
23	* 4405010144	TIRANTS D'ACCOUPLLEMENT MOTEUR 0,7	30	* 20598R0475	MOTEUR 1/2 HP III
23	* 4405010145	TIRANTS D'ACCOUPLLEMENT MOTEUR 1,5	30	* 20599R0475	MOTEUR 3/4 HP II
23	* 4405010169	TIRANTS D'ACCOUPLLEMENT MOTEUR (90)	30	* 20600R0475	MOTEUR 3/4 HP III
24	* 4405012216	COUVERCLE ARRIÈRE 1/2 HP	30	* 20601R0475	MOTEUR 1 HP II
24	* 4405012217	COUVERCLE ARRIÈRE 3/4-1,5 HP	30	* 20602R0475	MOTEUR 1 HP III
24	* 4405012218	COUVERCLE ARRIÈRE 2-3 HP	30	* 20603R0575	MOTEUR 1,5 HP II
24	* 4405012219	COUVERCLE MOTEUR MEC. C.90 ET RAIN	30	* 20604R0575	MOTEUR 1,5 HP III
25	* 4405010163	JOINT RAMASSE GOUTTES C.71 1/2-1 HP	30	* 20605R0475	MOTEUR 2 HP II
25	* 4405010164	JOINT RAMASSE GOUTTES C.80 1,5-3 HP	30	* 20606R0475	MOTEUR 2 HP III
26	* 4405010146	ENSEMBLE COUVERCLE VENTILATEUR 0,	30	* 22341R0475	MOTEUR 3 HP II
26	* 4405010147	ENSEMBLE COUVERCLE VENTILATEUR 0,	30	* 20607R0475	MOTEUR 3 HP III

CODE **69221, 69222, 69223, 69224, 69225, 69226, 69227, 69228, 69229, 69230, 69231, 69232**

DESCRIPTION: **POMPE L.F.M.**

OBSERVATIONS

POS	CODE	OBSERVATIONS
6	* 4405010717	POUR: 69231, 69232
7	* 4405010106	POUR: 69221, 69222, 69223, 69224, 69225, 69226
7	* 4405010107	POUR: 69227, 69228, 69229, 69230, 69231, 69232
10	* 4405010111	POUR: 69221, 69222
10	* 4405010112	POUR: 69222, 69223, 69224, 69225, 69226
10	* 4405010113	POUR: 69227, 69228, 69229, 69230, 69232
10	* 4405010180	POUR: 69231
12	* 4405010115	POUR: 69221, 69222, 69223, 69224
12	* 4405010116	POUR: 69225, 69226, 69227, 69228
12	* 4405010117	POUR: 69229, 69230, 69231, 69232
13	* 4405010134	POUR: 69222, 69224, 69226, 69228, 69230, 69232
14	* 4405010591	POUR: 69221
14	* 4405010592	POUR: 69222
14	* 4405010750	POUR: 69223
14	* 4405010751	POUR: 69224
14	* 4405010752	POUR: 69225
14	* 4405010753	POUR: 69226
14	* 4405010754	POUR: 69227
14	* 4405010755	POUR: 69228
14	* 4405010756	POUR: 69229
14	* 4405010757	POUR: 69230
14	* 4405010601	POUR: 69231
14	* 4405010602	POUR: 69232
18	* 4405011114	POUR: 69221, 69222, 69223, 69224, 69225, 69226
18	* 4405011115	POUR: 69227, 69228, 69229, 69230, 69231, 69232
21	* 4405012212	POUR: 69221, 69222
21	* 4405012213	POUR: 69223, 69224, 69225, 69226, 69227, 69228
21	* 4405012214	POUR: 69229, 69230, 69232
21	* 4405012215	POUR: 69231
22	* 4405010135	POUR: 69221, 69222, 69223, 69224, 69225, 69226
22	* 4405010136	POUR: 69227, 69228, 69229, 69230, 69232
22	* 4405010171	POUR: 69231
23	* 4405010143	POUR: 69221, 69222
23	* 4405010144	POUR: 69223, 69224, 69225, 69226
23	* 4405010145	POUR: 69227, 69228, 69229, 69230, 69232
23	* 4405010169	POUR: 69231
24	* 4405012216	POUR: 69221, 69222
24	* 4405012217	POUR: 69223, 69224, 69225, 69226
24	* 4405012218	POUR: 69227, 69228, 69229, 69230, 69232
24	* 4405012219	POUR: 69231
25	* 4405010163	POUR: 69221, 69222, 69223, 69224, 69225, 69226
25	* 4405010164	POUR: 69227, 69228, 69229, 69230, 69231, 69232
26	* 4405010146	POUR: 69221, 69222

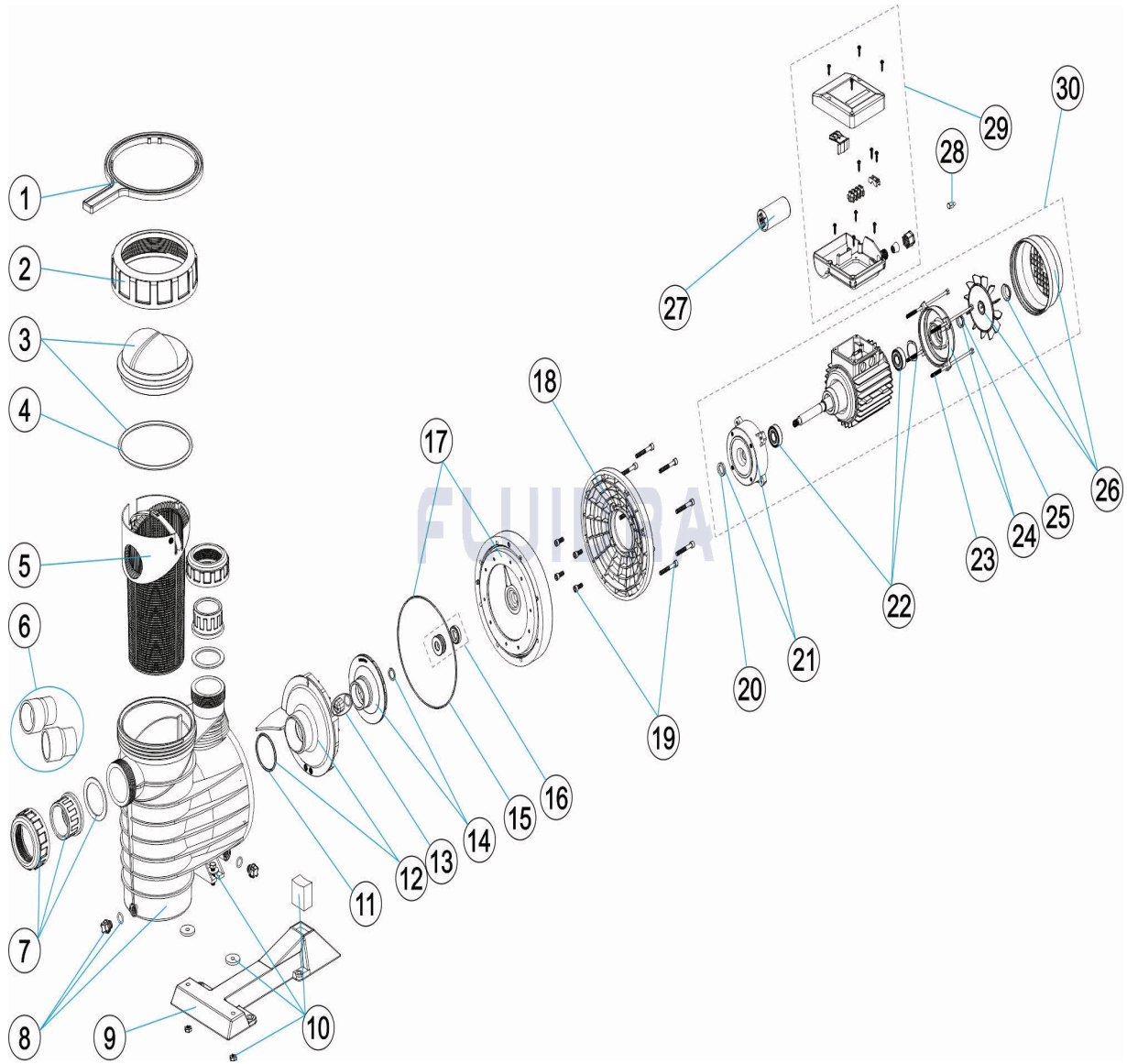
CODE **69221, 69222, 69223, 69224, 69225, 69226, 69227, 69228, 69229, 69230, 69231, 69232**

DESCRIPTION: **POMPE L.F.M.**

26	* 4405010147	POUR: 69223, 69224, 69225, 69226
26	* 4405010148	POUR: 69227, 69228, 69229, 69230, 69232
26	* 4405010170	POUR: 69231
27	* 4405010149	POUR: 69221, 69222
27	* 4405020121	POUR: 69223, 69224
27	* 4405020122	POUR: 69225, 69226
27	* 4405010150	POUR: 69227, 69228
27	* 4405010174	POUR: 69229, 69230
27	* 4405010175	POUR: 69231, 69232
28	* 4405012220	POUR: 69227
28	* 4405012221	POUR: 69229
28	* 4405012053	POUR: 69231
29	* 4405010154	POUR: 69221, 69223, 69225
29	* 4405010155	POUR: 69227, 69229, 69231
29	* 4405010156	POUR: 69222, 69224, 69226
29	* 4405010157	POUR: 69228, 69230, 69232
30	* 20597R0475	POUR: 69221
30	* 20598R0475	POUR: 69222
30	* 20599R0475	POUR: 69223
30	* 20600R0475	POUR: 69224
30	* 20601R0475	POUR: 69225
30	* 20602R0475	POUR: 69226
30	* 20603R0575	POUR: 69227
30	* 20604R0575	POUR: 69228
30	* 20605R0475	POUR: 69229
30	* 20606R0475	POUR: 69230
30	* 22341R0475	POUR: 69231
30	* 20607R0475	POUR: 69232

CODE **69221, 69222, 69223, 69224, 69225, 69226, 69227, 69228, 69229, 69230, 69231, 69232**

DESCRIPTION: **L.F.M. PUMP**



ENGLISH

POS	CODE	DESCRIPTION	QUANTITY	POS	CODE	DESCRIPTION	QUANTITY
1	4404130103	LID SPANNER		12	* 4405010115	DIFFUSEUR <=0,75 HP	
2	4405012201	PRE-FILTER COVER NUT		12	* 4405010116	DIFFUSOR 1 HP - 2 HP	
3	4405012202	PRE-FILTER COVER WITH GASKET		12	* 4405010117	DIFFUSOR 2,5 - 3 HP	
4	4405010178	O' RING D 151,7X6,99		13	* 4405010134	IMPELLER COVER M8 LEFT	
5	4405010105	PRE-FILTER BASKET		14	* 4405010591	IMPELLER ½ (II) HP	
6	* 4405010717	UNION FITTINGS 3 HP		14	* 4405010592	IMPELLER ½ (III) HP	
7	* 4405010106	UNION FITTINGS <= 1 HP		14	* 4405010750	IMPELLER 3/4 CV II	
7	* 4405010107	UNION FITTINGS 1,5 HP - 2,5 HP		14	* 4405010751	IMPELLER 3/4 CV III	
8	4405012203	PUMP HOUSING		14	* 4405010752	IMPELLER 1 CV II	
9	4405010114	PUMP BASE 1,5 -3 HP		14	* 4405010753	IMPELLER 1 HP III	
10	* 4405010111	PUMP BASE FITTINGS <= 0,5 HP		14	* 4405010754	IMPELLER 1 1/2 CV II	
10	* 4405010112	PUMP BASE FITTINGS 0,75 - 1,5 HP		14	* 4405010755	IMPELLER 1 1/2 CV III	

*** SEE OBSERVATIONS SHEET**

CODE **69221, 69222, 69223, 69224, 69225, 69226, 69227, 69228, 69229, 69230, 69231, 69232**

DESCRIPTION: **L.F.M. PUMP**

10	* 4405010113	PUMP BASE FITTINGS 1,5 HP - 3 HP	14	* 4405010756	IMPELLER 2 CV II
10	* 4405010180	PUMP BASE FITTINGS 3 HP II	14	* 4405010757	IMPELLER 2 CV III
11	4405010161	O' RING D. 56,7X3,5	14	* 4405010601	IMPELLER 3 (II) HP
14	* 4405010602	IMPELLER 3 (III) HP	26	* 4405010148	FAN COVER ASSEMBLY 1,5 - 2 - 3 HP III
15	4405010160	MOTOR CLAMP GASKET	26	* 4405010170	FAN COVER ASSEMBLY 3 HP II
16	4405010118	MECHANICAL SEAL	27	* 4405010149	CONDENSER 12 UF 1/2 CV
17	4405011113	FLANGE MECANICAL SEAL	27	* 4405020121	CONDENSER 14 UF 3/4 CV
18	* 4405011114	MOTOR CLAMP (0,5 - 1 HP)	27	* 4405020122	CONDENSER 16 UF 1 CV
18	* 4405011115	MOTOR CLAMP (1,5 - 3 HP)	27	* 4405010150	CONDENSER 18 UF 1,5 CV
19	4405011116	MOTOR SCREW	27	* 4405010174	CONDENSER 32 ?F 2 CV
20	4405010162	DEFLECTOR WASHER (1/2-3/4-1-1,5-2 HP)	27	* 4405010175	CONDENSER 40 ?F 2,5-3 CV
21	* 4405012212	FRONT MOTOR COVER ½ HP	28	* 4405012220	RESETTABLE THERMAL PROTECTION (1,5
21	* 4405012213	FRONT MOTOR COVER 3/4 1 1/2 HP	28	* 4405012221	RESETTABLE THERMAL PROTECTION (2 H
21	* 4405012214	FRONT MOTOR COVER 2-3 HP	28	* 4405012053	RESETTABLE THERMAL PROTECTION (2,5-
21	* 4405012215	MECH. FLANGE C90	29	* 4405010154	TERMINAL BOX ASSEMBLY C. 63-71 II
22	* 4405010135	MOTOR BEARINGS < 1 HP	29	* 4405010155	TERMINAL BOX ASSEMBLY (C 80-90) II (ANC
22	* 4405010136	MOTOR BEARINGS 1,5 HP - 3 HP	29	* 4405010156	TERMINAL BOX COVER C 63-71 III
22	* 4405010171	BEARINGS ASSEMBLY 6205 2RS 3,5HP	29	* 4405010157	TERMINAL BOX ASSEMBLY C. 80-90 III
23	* 4405010143	MOTOR TIES C. 63	30	* 20597R0475	MOTOR 1/2 HP II
23	* 4405010144	MOTOR TIES 0,75 - 1 HP	30	* 20598R0475	MOTOR 1/2 HP III
23	* 4405010145	MOTOR TIES 1,5 - 3 HP III	30	* 20599R0475	MOTOR 3/4 HP II
23	* 4405010169	MOTOR TIES (90) 3 HP II	30	* 20600R0475	MOTOR 3/4 HP III
24	* 4405012216	REAR COVER 1/2 HP	30	* 20601R0475	MOTOR 1 HP II
24	* 4405012217	REAR COVER 3/4-1 1/2 HP	30	* 20602R0475	MOTOR 1 HP III
24	* 4405012218	REAR COVER 2-3 HP	30	* 20603R0575	MOTOR 1,5 HP II
24	* 4405012219	MEC. MOTOR COVER C.90	30	* 20604R0575	MOTOR 1,5 HP III
25	* 4405010163	DEFLECTOR WASHER C.71 1/2-1 HP	30	* 20605R0475	MOTOR 2 HP II
25	* 4405010164	DEFLECTOR WASHER C.80 1,5-3 HP	30	* 20606R0475	MOTOR 2 HP III
26	* 4405010146	FAN COVER ASSEMBLY 0,5 HP	30	* 22341R0475	MOTOR 3 HP II
26	* 4405010147	FAN COVER ASSEMBLY 0,75 - 1 HP	30	* 20607R0475	MOTOR 3 HP III

CODE **69221, 69222, 69223, 69224, 69225, 69226, 69227, 69228, 69229, 69230, 69231, 69232**

DESCRIPTION: **L.F.M. PUMP**

OBSERVATIONS

POS	CODE	OBSERVATIONS
6	* 4405010717	FOR: 69231, 69232
7	* 4405010106	FOR: 69221, 69222, 69223, 69224, 69225, 69226
7	* 4405010107	FOR: 69227, 69228, 69229, 69230, 69231, 69232
10	* 4405010111	FOR: 69221, 69222
10	* 4405010112	FOR: 69222, 69223, 69224, 69225, 69226
10	* 4405010113	FOR: 69227, 69228, 69229, 69230, 69232
10	* 4405010180	FOR: 69231
12	* 4405010115	FOR: 69221, 69222, 69223, 69224
12	* 4405010116	FOR: 69225, 69226, 69227, 69228
12	* 4405010117	FOR: 69229, 69230, 69231, 69232
13	* 4405010134	FOR: 69222, 69224, 69226, 69228, 69230, 69232
14	* 4405010591	FOR: 69221
14	* 4405010592	FOR: 69222
14	* 4405010750	FOR: 69223
14	* 4405010751	FOR: 69224
14	* 4405010752	FOR: 69225
14	* 4405010753	FOR: 69226
14	* 4405010754	FOR: 69227
14	* 4405010755	FOR: 69228
14	* 4405010756	FOR: 69229
14	* 4405010757	FOR: 69230
14	* 4405010601	FOR: 69231
14	* 4405010602	FOR: 69232
18	* 4405011114	FOR: 69221, 69222, 69223, 69224, 69225, 69226
18	* 4405011115	FOR: 69227, 69228, 69229, 69230, 69231, 69232
21	* 4405012212	FOR: 69221, 69222
21	* 4405012213	FOR: 69223, 69224, 69225, 69226, 69227, 69228
21	* 4405012214	FOR: 69229, 69230, 69232
21	* 4405012215	FOR: 69231
22	* 4405010135	FOR: 69221, 69222, 69223, 69224, 69225, 69226
22	* 4405010136	FOR: 69227, 69228, 69229, 69230, 69232
22	* 4405010171	FOR: 69231
23	* 4405010143	FOR: 69221, 69222
23	* 4405010144	FOR: 69223, 69224, 69225, 69226
23	* 4405010145	FOR: 69227, 69228, 69229, 69230, 69232
23	* 4405010169	FOR: 69231
24	* 4405012216	FOR: 69221, 69222
24	* 4405012217	FOR: 69223, 69224, 69225, 69226
24	* 4405012218	FOR: 69227, 69228, 69229, 69230, 69232
24	* 4405012219	FOR: 69231
25	* 4405010163	FOR: 69221, 69222, 69223, 69224, 69225, 69226
25	* 4405010164	FOR: 69227, 69228, 69229, 69230, 69231, 69232
26	* 4405010146	FOR: 69221, 69222

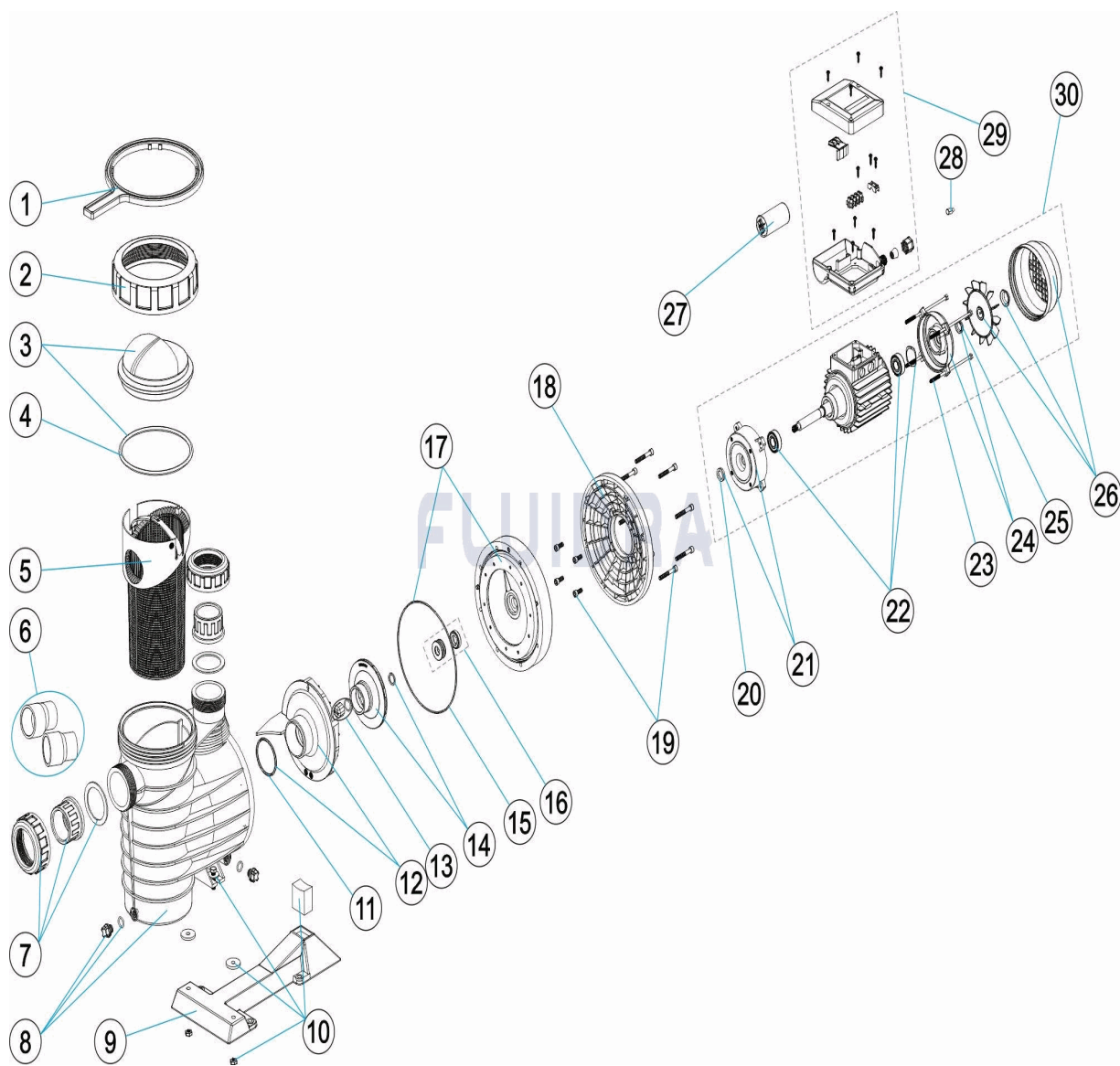
CODE **69221, 69222, 69223, 69224, 69225, 69226, 69227, 69228, 69229, 69230, 69231, 69232**

DESCRIPTION: **L.F.M. PUMP**

26	* 4405010147	FOR: 69223, 69224, 69225, 69226
26	* 4405010148	FOR: 69227, 69228, 69229, 69230, 69232
26	* 4405010170	FOR: 69231
27	* 4405010149	FOR: 69221, 69222
27	* 4405020121	FOR: 69223, 69224
27	* 4405020122	FOR: 69225, 69226
27	* 4405010150	FOR: 69227, 69228
27	* 4405010174	FOR: 69229, 69230
27	* 4405010175	FOR: 69231, 69232
28	* 4405012220	FOR: 69227
28	* 4405012221	FOR: 69229
28	* 4405012053	FOR: 69231
29	* 4405010154	FOR: 69221, 69223, 69225
29	* 4405010155	FOR: 69227, 69229, 69231
29	* 4405010156	FOR: 69222, 69224, 69226
29	* 4405010157	FOR: 69228, 69230, 69232
30	* 20597R0475	FOR: 69221
30	* 20598R0475	FOR: 69222
30	* 20599R0475	FOR: 69223
30	* 20600R0475	FOR: 69224
30	* 20601R0475	FOR: 69225
30	* 20602R0475	FOR: 69226
30	* 20603R0575	FOR: 69227
30	* 20604R0575	FOR: 69228
30	* 20605R0475	FOR: 69229
30	* 20606R0475	FOR: 69230
30	* 22341R0475	FOR: 69231
30	* 20607R0475	FOR: 69232

CODICE 69221, 69222, 69223, 69224, 69225, 69226, 69227, 69228, 69229, 69230, 69231, 69232

DESCRIZIONE: POMPA L.F.M.



ITALIANO

POS	CODICE	DESCRIZIONE	QUANTITA'	POS	CODICE	DESCRIZIONE	QUANTITA'
1	4404130103	CHIAVE GHIERA PER FILTRO		12	* 4405010115	DIFFUSORE <=0,75 HP	
2	4405012201	VITE COPERCHIO PREFILTRO		12	* 4405010116	DIFFUSORE 1 HP - 2 HP	
3	4405012202	COPERCHIO PREFILTRO CON GUARNIZIONE		12	* 4405010117	DIFFUSORE 2.5 - 3 HP	
4	4405010178	O-RING D 151,7X6,99		13	* 4405010134	TAPPO RUOTA M8 SIN.	
5	4405010105	CESTO PREFILTRO		14	* 4405010591	RUOTA 1/2 (II) HP	
6	* 4405010717	MANICOTTI DI UNIONE 3 HP		14	* 4405010592	RUOTA 1/2 (III) HP	
7	* 4405010106	MANICOTTI DI UNIONE <= 1 HP		14	* 4405010750	RUOTA 3/4 HP II	
7	* 4405010107	MANICOTTI DI UNIONE 1,5 HP - 2,5 HP		14	* 4405010751	RUOTA 3/4 HP III	
8	4405012203	CORPO POMBA		14	* 4405010752	RUOTA 1 HP II	
9	4405010114	PIEDE POMPA 1,5 - 3 HP		14	* 4405010753	RUOTA 1 HP III	
10	* 4405010111	UNIONE PARTE IDRAULICA-BASE POMP		14	* 4405010754	RUOTA 1 1/2 HP II	
10	* 4405010112	UNIONE PARTE IDRAULICA-BASE 0,75 -		14	* 4405010755	RUOTA 1 1/2 HP II	

*** SI FACCIÀ RIFERIMENTO AL FOGLIO DELLE OSSERVAZIONI**

CODICE **69221, 69222, 69223, 69224, 69225, 69226, 69227, 69228, 69229, 69230, 69231, 69232**

DESCRIZIONE: POMPA L.F.M.

10	* 4405010113	UNIONE PARTE IDRAULICA-BASE 1,5 HP	14	* 4405010756	RUOTA 2 HP II
10	* 4405010180	UNIONS PARTE IDRAULICA-BASE POMP	14	* 4405010757	RUOTA 2 HP III
11	4405010161	O-RING D 56,7X3,5	14	* 4405010601	RUOTA 3 (II) HP
14	* 4405010602	RUOTA 3 (III) HP	26	* 4405010148	KIT VENTOLA-COPRIVENTOLA 1,5 - 2 - 3 HF
15	4405010160	GUARNIZIONE FLANGIA MOTORE	26	* 4405010170	KIT VENTOLA-COPRIVENTOLA 3 HP II
16	4405010118	GUARNIZIONE MECCANICA	27	* 4405010149	CONDENSATORE 12 UF 1/2 CV
17	4405011113	BRIDA TENUTA MECCANICA	27	* 4405020121	CONDENSATORE 14 UF 3/4 CV
18	* 4405011114	FLANGIA MOTORE (0,5 - 1 HP)	27	* 4405020122	CONDENSATORE 16 UF 1 CV
18	* 4405011115	FLANGIA MOTORE (1,5 - 3 HP)	27	* 4405010150	CONDENSATORE 18 UF 1,5 CV
19	4405011116	VITE MOTORE	27	* 4405010174	CONDENSATORE 32 ?F 2 CV
20	4405010162	RONDELLA DEFLETTTRICE (1/2-3/4-1-1,5-2 †	27	* 4405010175	CONDENSATORE 40 ?F 2,5-3 CV
21	* 4405012212	COPERCHIO ANTERIORE MOTORE ½ HP	28	* 4405012220	PROTETTORE TERMICO RESETTABILE 1,5
21	* 4405012213	COPERCHIO ANTERIORE MOTORE 3/4-1,5	28	* 4405012221	PROTETTORE TERMICO RESETTABILE 2 C'
21	* 4405012214	COPERCHIO ANTERIORE MOTORE 2-3 HP	28	* 4405012053	PROTETTORE TERMICO RESETTABILE 2,5-
21	* 4405012215	FLANGIA MECC. C90	29	* 4405010154	GRUPPO MORSETTIERA C. 63-71 II
22	* 4405010135	CUSCINETTO MOTORE < 1 HP	29	* 4405010155	GRUPPO MORSETTIERA (C 80-90) II (ANDIA
22	* 4405010136	CUSCINETTO MOTORE 1,5 HP - 3 HP	29	* 4405010156	COPERCHIO MORSETTIERA C 63-71 III
22	* 4405010171	KIT ROLAMENTO 6205 2RS 3,5HP	29	* 4405010157	GRUPPO MORSETTIERA C.80-90 III
23	* 4405010143	ASTAS MOTORE C. 63	30	* 20597R0475	MOTOR 1/2 HP II
23	* 4405010144	ASTAS MOTORE 0,75 - 1 HP	30	* 20598R0475	MOTOR 1/2 HP III
23	* 4405010145	ASTAS MOTORE 1,5 - 3 HP III	30	* 20599R0475	MOTOR 3/4 HP II
23	* 4405010169	ASTAS MOTORE (90) 3 HP II	30	* 20600R0475	MOTOR 3/4 HP III
24	* 4405012216	COPERCHIO POSTERIORE 1/2 HP	30	* 20601R0475	MOTOR 1 HP III
24	* 4405012217	COPERCHIO POSTERIORE 3/4-1,5 HP	30	* 20602R0475	MOTOR 1 HP III
24	* 4405012218	COPERCHIO POSTERIORE 2-3 HP	30	* 20603R0575	MOTOR 1,5 HP II
24	* 4405012219	COPERCHIO MOTORE MEC. C.90 C/CASSII	30	* 20604R0575	MOTOR 1,5 HP III
25	* 4405010163	RONDELLA DEFLETTTRICE C.71 1/2-1 HP	30	* 20605R0475	MOTOR 2 HP II
25	* 4405010164	RONDELLA DEFLETTTRICE C.80 1,5-3 HP	30	* 20606R0475	MOTOR 2 HP III
26	* 4405010146	KIT VENTOLA-COPRIVENTOLA 0,5 HP	30	* 22341R0475	MOTOR 3 HP II
26	* 4405010147	KIT VENTOLA-COPRIVENTOLA 0,75 - 1 HP	30	* 20607R0475	MOTOR 3 HP III

CODICE **69221, 69222, 69223, 69224, 69225, 69226, 69227, 69228, 69229, 69230, 69231, 69232**

DESCRIZIONE: POMPA L.F.M.

OSSERVAZIONI

POS	CODICE	OSSERVAZIONI
6	* 4405010717	PER: 69231, 69232
7	* 4405010106	PER: 69221, 69222, 69223, 69224, 69225, 69226
7	* 4405010107	PER: 69227, 69228, 69229, 69230, 69231, 69232
10	* 4405010111	PER: 69221, 69222
10	* 4405010112	PER: 69222, 69223, 69224, 69225, 69226
10	* 4405010113	PER: 69227, 69228, 69229, 69230, 69232
10	* 4405010180	PER: 69231
12	* 4405010115	PER: 69221, 69222, 69223, 69224
12	* 4405010116	PER: 69225, 69226, 69227, 69228
12	* 4405010117	PER: 69229, 69230, 69231, 69232
13	* 4405010134	PER: 69222, 69224, 69226, 69228, 69230, 69232
14	* 4405010591	PER: 69221
14	* 4405010592	PER: 69222
14	* 4405010750	PER: 69223
14	* 4405010751	PER: 69224
14	* 4405010752	PER: 69225
14	* 4405010753	PER: 69226
14	* 4405010754	PER: 69227
14	* 4405010755	PER: 69228
14	* 4405010756	PER: 69229
14	* 4405010757	PER: 69230
14	* 4405010601	PER: 69231
14	* 4405010602	PER: 69232
18	* 4405011114	PER: 69221, 69222, 69223, 69224, 69225, 69226
18	* 4405011115	PER: 69227, 69228, 69229, 69230, 69231, 69232
21	* 4405012212	PER: 69221, 69222
21	* 4405012213	PER: 69223, 69224, 69225, 69226, 69227, 69228
21	* 4405012214	PER: 69229, 69230, 69232
21	* 4405012215	PER: 69231
22	* 4405010135	PER: 69221, 69222, 69223, 69224, 69225, 69226
22	* 4405010136	PER: 69227, 69228, 69229, 69230, 69232
22	* 4405010171	PER: 69231
23	* 4405010143	PER: 69221, 69222
23	* 4405010144	PER: 69223, 69224, 69225, 69226
23	* 4405010145	PER: 69227, 69228, 69229, 69230, 69232
23	* 4405010169	PER: 69231
24	* 4405012216	PER: 69221, 69222
24	* 4405012217	PER: 69223, 69224, 69225, 69226
24	* 4405012218	PER: 69227, 69228, 69229, 69230, 69232
24	* 4405012219	PER: 69231
25	* 4405010163	PER: 69221, 69222, 69223, 69224, 69225, 69226
25	* 4405010164	PER: 69227, 69228, 69229, 69230, 69231, 69232
26	* 4405010146	PER: 69221, 69222

*** SI FACCIA RIFERIMENTO AL FOGLIO DELLE OSSERVAZIONI**

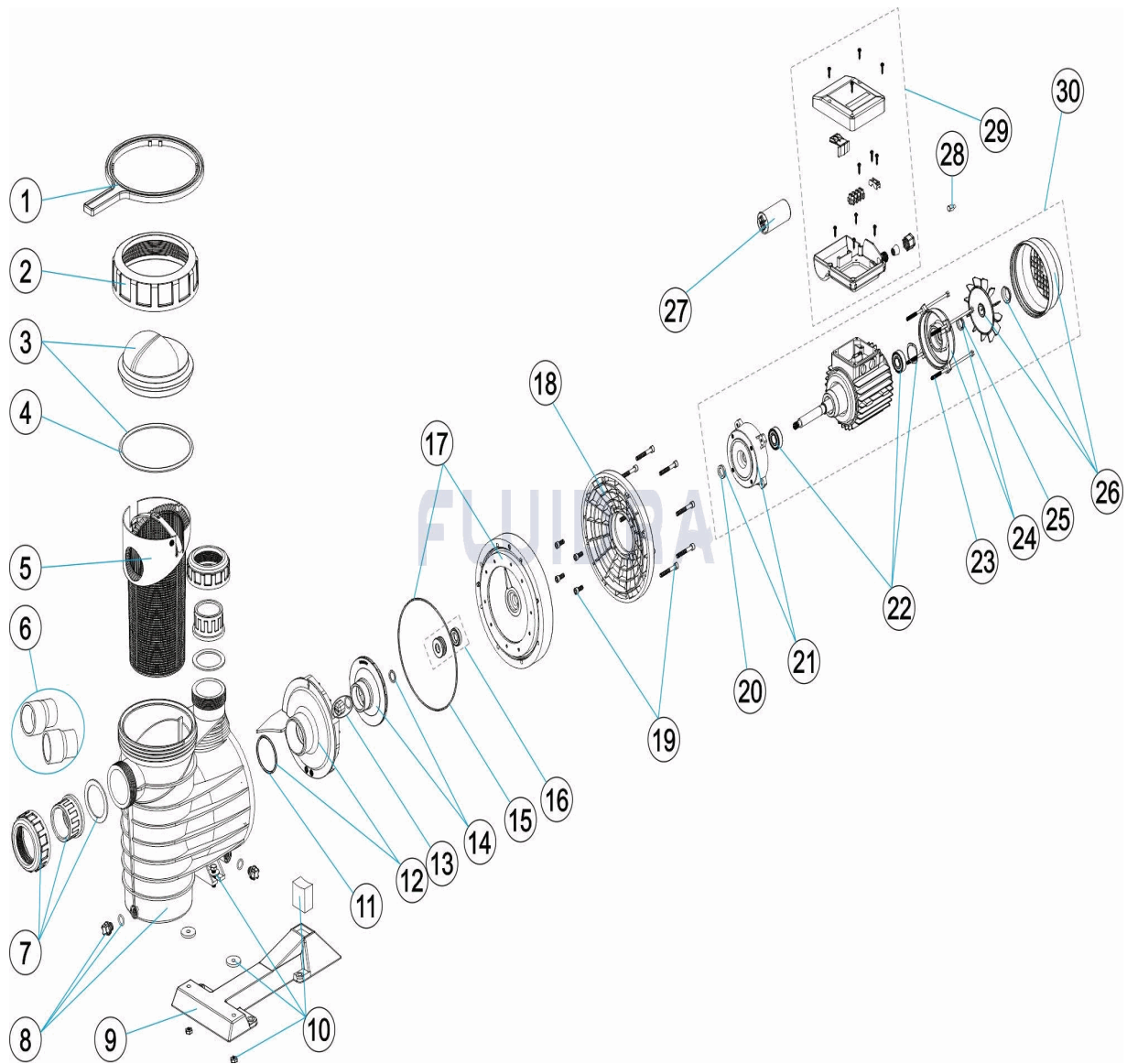
CODICE **69221, 69222, 69223, 69224, 69225, 69226, 69227, 69228, 69229, 69230, 69231, 69232**

DESCRIZIONE: POMPA L.F.M.

26	* 4405010147	PER: 69223, 69224, 69225, 69226
26	* 4405010148	PER: 69227, 69228, 69229, 69230, 69232
26	* 4405010170	PER: 69231
27	* 4405010149	PER: 69221, 69222
27	* 4405020121	PER: 69223, 69224
27	* 4405020122	PER: 69225, 69226
27	* 4405010150	PER: 69227, 69228
27	* 4405010174	PER: 69229, 69230
27	* 4405010175	PER: 69231, 69232
28	* 4405012220	PER: 69227
28	* 4405012221	PER: 69229
28	* 4405012053	PER: 69231
29	* 4405010154	PER: 69221, 69223, 69225
29	* 4405010155	PER: 69227, 69229, 69231
29	* 4405010156	PER: 69222, 69224, 69226
29	* 4405010157	PER: 69228, 69230, 69232
30	* 20597R0475	PER: 69221
30	* 20598R0475	PER: 69222
30	* 20599R0475	PER: 69223
30	* 20600R0475	PER: 69224
30	* 20601R0475	PER: 69225
30	* 20602R0475	PER: 69226
30	* 20603R0575	PER: 69227
30	* 20604R0575	PER: 69228
30	* 20605R0475	PER: 69229
30	* 20606R0475	PER: 69230
30	* 22341R0475	PER: 69231
30	* 20607R0475	PER: 69232

CODE **69221, 69222, 69223, 69224, 69225, 69226, 69227, 69228, 69229, 69230, 69231, 69232**

BESCHREIBUNG: **PUMPEN L.F.M.**



DEUTSCH

POS	CODE	BESCHREIBUNG	MENGE	POS	CODE	BESCHREIBUNG	MENGE
1	4404130103	SCHLÜSSEL MUTTER FILTER		12	* 4405010115	WASSERVERTEILER <=0,75 HP	
2	4405012201	MUTTER VORFILTERDECKEL		12	* 4405010116	WASSERVERTEILER 1 HP - 2 HP	
3	4405012202	VORFILTERABDECKUNG UND DICHTUNG		12	* 4405010117	WASSERVERTEILER 2,5 - 3 HP	
4	4405010178	O-RING D. 151,7 X 6,99		13	* 4405010134	STOPFEN LAUFRAD M8 LINKS	
5	4405010105	VORFILTERKORB		14	* 4405010591	LAUFRAD ½ (II) HP	
6	* 4405010717	ANSCHLUSSZUBEHÖR 3 HP		14	* 4405010592	LAUFRAD ½ (III) HP	
7	* 4405010106	ANSCHLUSSZUBEHÖR <= 1 HP		14	* 4405010750	LAUFRAD ¾ CV II	
7	* 4405010107	ANSCHLUSSZUBEHÖR 1,5 HP - 2,5 HP		14	* 4405010751	LAUFRAD ¾ CV III	
8	4405012203	PUMPENGHÄUSE		14	* 4405010752	LAUFRAD 1 CV II	
9	4405010114	PUMPENFUSS 1,5 - 3 HP		14	* 4405010753	LAUFRAD 1 CV III	
10	* 4405010111	VERBINDUNG HYDRAULIK-FUSS <= 0,5 HF		14	* 4405010754	LAUFRAD 1 ½ CV II	
10	* 4405010112	VERBINDUNG HYDRAULIK-FUSS 0,75 - 1,5		14	* 4405010755	LAUFRAD 1 ½ CV III	

CODE **69221, 69222, 69223, 69224, 69225, 69226, 69227, 69228, 69229, 69230, 69231, 69232**

BESCHREIBUNG: **PUMPEN L.F.M.**

10	* 4405010113	VERBINDUNG HYDRAULIK-FUSS 1,5 HP - 3	14	* 4405010756	LAUFRAD 2 CV II
10	* 4405010180	VERBINDUNG HYDRAULIK-FUSS 3 HP II	14	* 4405010757	LAUFRAD 2 CV III
11	4405010161	O-RING D. 56,7 X 3,5	14	* 4405010601	LAUFRAD 3 (II) HP
14	* 4405010602	LAUFRAD 3 (III) HP	26	* 4405010148	SET VENTILATOR - ABDECKUNG 1,5 - 2 - 3 I
15	4405010160	DICHTUNG MOTORFLANSCH	26	* 4405010170	SET VENTILATOR - ABDECKUNG 3 HP II
16	4405010118	GLEITRINGDICHTUNG	27	* 4405010149	KONDENSATOR 12 UF 1/2 CV
17	4405011113	GLEITRINGDICHTUNG SCHLIESSVORRICHTUNG	27	* 4405020121	KONDENSATOR 14 UF 3/4 CV
18	* 4405011114	MOTORFLANSCH (0,5 - 1 HP)	27	* 4405020122	KONDENSATOR 16 UF 1 CV
18	* 4405011115	MOTORFLANSCH (1,5 - 3 HP)	27	* 4405010150	KONDENSATOR 18 UF 1,5 CV
19	4405011116	VERBINDUNGSSCHRAUBEN MOTOR	27	* 4405010174	KONDENSATOR 32 UF 2 CV
20	4405010162	DISTANZSCHEIBE (1/2 - 3/4 - 1 - 1,5 - 2 HP)	27	* 4405010175	KONDENSATOR 40 UF 2,5 - 3 CV
21	* 4405012212	MOTORDECKEL VORNE 1/2 CV	28	* 4405012220	RÜCKSETZBARER WÄRMESCHUTZ (1 1/2 CV)
21	* 4405012213	MOTORDECKEL VORNE 3/4 - 1,5 CV	28	* 4405012221	RÜCKSETZBARER WÄRMESCHUTZ (2 CV 2)
21	* 4405012214	MOTORDECKEL VORNE 2 - 3 CV	28	* 4405012053	RÜCKSETZBARER WÄRMESCHUTZ (2,5 - 3 CV)
21	* 4405012215	GLEITRINGDICHTUNG C,90 B14 RED. MIT FOLIE	29	* 4405010154	SET KLEMMSCHRANK C. 63 - 71 II
22	* 4405010135	WÄLZLAGER MOTOR < 1 HP	29	* 4405010155	SET KLEMMSCHRANK (C 80 - 90) II (ANDIA)
22	* 4405010136	WÄLZLAGER MOTOR 1,5 HP - 3 HP	29	* 4405010156	SET KLEMMSCHRANK C.63 - 71 III
22	* 4405010171	SET WÄLZLAGER 6205 2RS 3,5 HP	29	* 4405010157	SET KLEMMSCHRANK C.80 - 90 III
23	* 4405010143	RUNDEISEN MOTOR C. 63	30	* 20597R0475	MOTOR 1/2 HP II
23	* 4405010144	RUNDEISEN MOTOR 0,75 - 1 HP	30	* 20598R0475	MOTOR 1/2 HP III
23	* 4405010145	RUNDEISEN MOTOR 1,5 - 3 HP III	30	* 20599R0475	MOTOR 3/4 HP II
23	* 4405010169	RUNDEISEN MOTOR (90) 3 HP II	30	* 20600R0475	MOTOR 3/4 HP III
24	* 4405012216	ABDECKUNG HINTEN 1/2 CV	30	* 20601R0475	MOTOR 1 HP II
24	* 4405012217	ABDECKUNG HINTEN 3/4 - 1 - 1,5 CV	30	* 20602R0475	MOTOR 1 HP III
24	* 4405012218	ABDECKUNG HINTEN 2 - 3 CV	30	* 20603R0575	MOTOR 1,5 HP II
24	* 4405012219	MOTORDECKEL MECH. C90 MIT RINGLAGER	30	* 20604R0575	MOTOR 1,5 HP III
25	* 4405010163	BEILAGSCHEIBE C,71 1/2 - 1 HP	30	* 20605R0475	MOTOR 2 HP II
25	* 4405010164	BEILAGSCHEIBE C,80 1,5 - 3 HP	30	* 20606R0475	MOTOR 2 HP III
26	* 4405010146	SET VENTILATOR - ABDECKUNG 0,5 HP	30	* 22341R0475	MOTOR 3 HP II
26	* 4405010147	SET VENTILATOR - ABDECKUNG 0,75 - 1 HP	30	* 20607R0475	MOTOR 3 HP III

CODE **69221, 69222, 69223, 69224, 69225, 69226, 69227, 69228, 69229, 69230, 69231, 69232**

BESCHREIBUNG: **PUMPEN L.F.M.**

HINWEISE

POS	CODE	HINWEISE
6	* 4405010717	FÜR: 69231, 69232
7	* 4405010106	FÜR: 69221, 69222, 69223, 69224, 69225, 69226
7	* 4405010107	FÜR: 69227, 69228, 69229, 69230, 69231, 69232
10	* 4405010111	FÜR: 69221, 69222
10	* 4405010112	FÜR: 69222, 69223, 69224, 69225, 69226
10	* 4405010113	FÜR: 69227, 69228, 69229, 69230, 69232
10	* 4405010180	FÜR: 69231
12	* 4405010115	FÜR: 69221, 69222, 69223, 69224
12	* 4405010116	FÜR: 69225, 69226, 69227, 69228
12	* 4405010117	FÜR: 69229, 69230, 69231, 69232
13	* 4405010134	FÜR: 69222, 69224, 69226, 69228, 69230, 69232
14	* 4405010591	FÜR: 69221
14	* 4405010592	FÜR: 69222
14	* 4405010750	FÜR: 69223
14	* 4405010751	FÜR: 69224
14	* 4405010752	FÜR: 69225
14	* 4405010753	FÜR: 69226
14	* 4405010754	FÜR: 69227
14	* 4405010755	FÜR: 69228
14	* 4405010756	FÜR: 69229
14	* 4405010757	FÜR: 69230
14	* 4405010601	FÜR: 69231
14	* 4405010602	FÜR: 69232
18	* 4405011114	FÜR: 69221, 69222, 69223, 69224, 69225, 69226
18	* 4405011115	FÜR: 69227, 69228, 69229, 69230, 69231, 69232
21	* 4405012212	FÜR: 69221, 69222
21	* 4405012213	FÜR: 69223, 69224, 69225, 69226, 69227, 69228
21	* 4405012214	FÜR: 69229, 69230, 69232
21	* 4405012215	FÜR: 69231
22	* 4405010135	FÜR: 69221, 69222, 69223, 69224, 69225, 69226
22	* 4405010136	FÜR: 69227, 69228, 69229, 69230, 69232
22	* 4405010171	FÜR: 69231
23	* 4405010143	FÜR: 69221, 69222
23	* 4405010144	FÜR: 69223, 69224, 69225, 69226
23	* 4405010145	FÜR: 69227, 69228, 69229, 69230, 69232
23	* 4405010169	FÜR: 69231
24	* 4405012216	FÜR: 69221, 69222
24	* 4405012217	FÜR: 69223, 69224, 69225, 69226
24	* 4405012218	FÜR: 69227, 69228, 69229, 69230, 69232
24	* 4405012219	FÜR: 69231
25	* 4405010163	FÜR: 69221, 69222, 69223, 69224, 69225, 69226
25	* 4405010164	FÜR: 69227, 69228, 69229, 69230, 69231, 69232
26	* 4405010146	FÜR: 69221, 69222

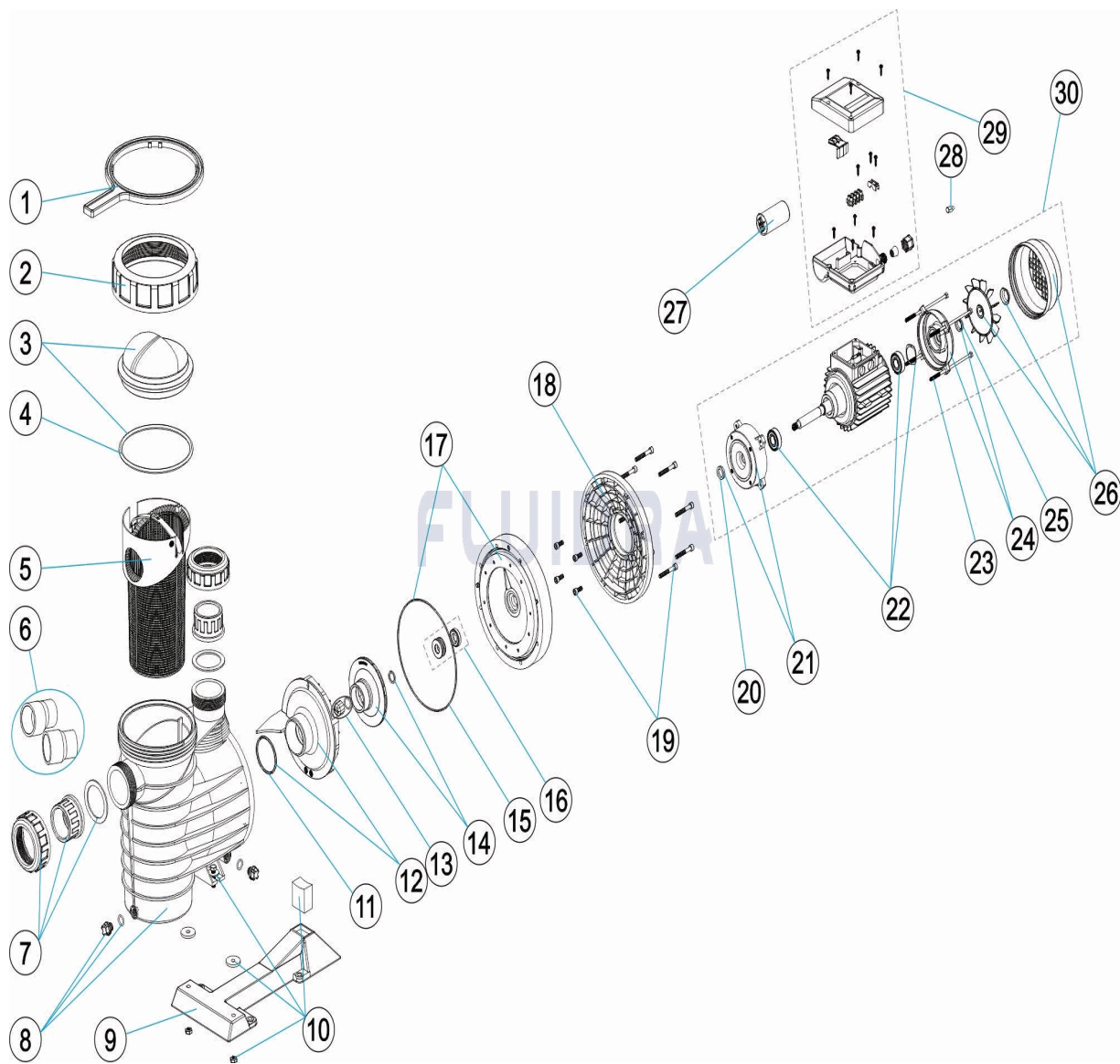
CODE **69221, 69222, 69223, 69224, 69225, 69226, 69227, 69228, 69229, 69230, 69231, 69232**

BESCHREIBUNG: **PUMPEN L.F.M.**

26	* 4405010147	FÜR: 69223, 69224, 69225, 69226
26	* 4405010148	FÜR: 69227, 69228, 69229, 69230, 69232
26	* 4405010170	FÜR: 69231
27	* 4405010149	FÜR: 69221, 69222
27	* 4405020121	FÜR: 69223, 69224
27	* 4405020122	FÜR: 69225, 69226
27	* 4405010150	FÜR: 69227, 69228
27	* 4405010174	FÜR: 69229, 69230
27	* 4405010175	FÜR: 69231, 69232
28	* 4405012220	FÜR: 69227
28	* 4405012221	FÜR: 69229
28	* 4405012053	FÜR: 69231
29	* 4405010154	FÜR: 69221, 69223, 69225
29	* 4405010155	FÜR: 69227, 69229, 69231
29	* 4405010156	FÜR: 69222, 69224, 69226
29	* 4405010157	FÜR: 69228, 69230, 69232
30	* 20597R0475	FÜR: 69221
30	* 20598R0475	FÜR: 69222
30	* 20599R0475	FÜR: 69223
30	* 20600R0475	FÜR: 69224
30	* 20601R0475	FÜR: 69225
30	* 20602R0475	FÜR: 69226
30	* 20603R0575	FÜR: 69227
30	* 20604R0575	FÜR: 69228
30	* 20605R0475	FÜR: 69229
30	* 20606R0475	FÜR: 69230
30	* 22341R0475	FÜR: 69231
30	* 20607R0475	FÜR: 69232

CODIGO 69221, 69222, 69223, 69224, 69225, 69226, 69227, 69228, 69229, 69230, 69231, 69232

DESCRIÇÃO: BOMBA L.F.M.



PORTUGUES

POS	CODIGO	DESCRIÇÃO	JANTIDADE	POS	CODIGO	DESCRIÇÃO	JANTIDADE
1	4404130103	CHAVE PORCA FILTRO		12	* 4405010115	DIFUSOR <=0,75 HP	
2	4405012201	PORCA TAMPA PRE-FILTRO		12	* 4405010116	DIFUSOR 1 HP - 2 HP	
3	4405012202	TAMPA PRÉ-FILTRO COM JUNTA		12	* 4405010117	DIFUSOR 2,5 - 3 HP	
4	4405010178	JUNTA TÓRICA D 151,7X6,99		13	* 4405010134	TAMPO RODÍZIO M8 ESQ.	
5	4405010105	CESTO PRÉ-FILTRO		14	* 4405010591	RODÍZIO ½ (II) HP	
6	* 4405010717	ACESSÓRIOS DE UNIÃO 3 HP		14	* 4405010592	RODÍZIO ½ (III) HP	
7	* 4405010106	ACESSÓRIOS DE UNIÃO <= 1 HP		14	* 4405010750	RODÍZIO 3/4 HP II	
7	* 4405010107	ACESSÓRIOS DE UNIÃO 1,5 HP - 2,5 HP		14	* 4405010751	RODÍZIO 3/4 HP III	
8	4405012203	CORPO BOMBA		14	* 4405010752	RODÍZIO 1 CV II	
9	4405010114	PÉ BOMBA 1,5 -3 HP		14	* 4405010753	RODÍZIO 1 CV III	
10	* 4405010111	UNIÃO HIDRÁULICA PIE <= 0,5 HP		14	* 4405010754	RODÍZIO 1 1/2 CV II	
10	* 4405010112	UNIÃO HIDRÁULICA PIE 0,75 - 1,5 HP		14	* 4405010755	RODÍZIO 1 1/2 CV II	

CODIGO **69221, 69222, 69223, 69224, 69225, 69226, 69227, 69228, 69229, 69230, 69231, 69232**

DESCRIÇÃO: BOMBA L.F.M.

10	* 4405010113	UNIÃO HIDRÁULICA PIE 1,5 HP - 3 HP	14	* 4405010756	RODÍZIO 2 HP II
10	* 4405010180	UNIÃO HIDRÁULICA PIE 3 HP II	14	* 4405010757	RODÍZIO 2 HP III
11	4405010161	JUNTA TÓRICA D 56,7X3,5	14	* 4405010601	RODÍZIO 3 (II) HP
14	* 4405010602	RODÍZIO 3 (III) HP	26	* 4405010148	CONJUNTO VENTILLADOR-TAMPA 1,5 - 2 - 3
15	4405010160	JUNTA MANILHA MOTOR	26	* 4405010170	CONJUNTO VENTILLADOR-TAMPA 3 HP II
16	4405010118	JUNTA MECÂNICA	27	* 4405010149	CONDENSADOR 12 UF 1/2 CV
17	4405011113	BRIDA SELO MECANICO	27	* 4405020121	CONDENSADOR 14 UF 3/4 CV
18	* 4405011114	MANILHA MOTOR (0,5 - 1 HP)	27	* 4405020122	CONDENSADOR 16 UF 1 CV
18	* 4405011115	MANILHA MOTOR (1,5 - 3 HP)	27	* 4405010150	CONDENSADOR 18 UF 1,5 CV
19	4405011116	PARAFUSO MOTOR	27	* 4405010174	CONDENSADOR 32 UF 2 CV
20	4405010162	ANILHA DEFLECTORA (1/2-3/4-1-1,5-2 HP)	27	* 4405010175	CONDENSATEUR 40 UF 2,5-3 CV
21	* 4405012212	TAPA DELANTERA MOTOR 1/2 HP	28	* 4405012220	PROTECTOR TÉRMICO REARMÁVEL 1 1/2 CV
21	* 4405012213	TAMPA DIANTEIRA MOTOR 3/4-1,5 HP	28	* 4405012221	PROTECTOR TÉRMICO REARMÁVEL 2 CV.
21	* 4405012214	TAMPA DIANTEIRA MOTOR 2-3 HP	28	* 4405012053	PROTECTOR TÉRMICO REARMÁVEL 2,5-3 CV
21	* 4405012215	FLANGE MEC. C90	29	* 4405010154	CONJUNTO CAIXA LIGAÇÕES C. 63-71 II
22	* 4405010135	ROLAMENTO MOTOR < 1 HP	29	* 4405010155	CONJUNTO CAIXA LIGAÇÕES 2-2,5-3 HP (A)
22	* 4405010136	ROLAMENTO MOTOR 1,5 HP - 3 HP	29	* 4405010156	TAMPA CAIXA BORNES C 63-71 III
22	* 4405010171	CONJUNTO ROLAMENTO 6205 2RS 3,5HP	29	* 4405010157	CONJUNTO CAIXA LIGAÇÕES C.80-90 III
23	* 4405010143	VARETAS MOTOR C. 63	30	* 20597R0475	MOTOR 1/2 HP II
23	* 4405010144	VARETAS MOTOR 0,75 - 1 HP	30	* 20598R0475	MOTOR 1/2 HP III
23	* 4405010145	VARETAS MOTOR 1,5 - 3 HP III	30	* 20599R0475	MOTOR 3/4 HP II
23	* 4405010169	VARETAS MOTOR (90) 3 HP II	30	* 20600R0475	MOTOR 3/4 HP III
24	* 4405012216	TAMPA TRASEIRA 1/2 HP	30	* 20601R0475	MOTOR 1 HP II
24	* 4405012217	TAMPA TRASEIRA 3/4-1,5 HP	30	* 20602R0475	MOTOR 1 HP III
24	* 4405012218	TAMPA TRASEIRA 2-3 HP	30	* 20603R0575	MOTOR 1,5 HP II
24	* 4405012219	TAMPA MOTOR MEC. C.90 C/RANHURA D5;	30	* 20604R0575	MOTOR 1,5 HP III
25	* 4405010163	ANILHA DEFLECTORA C.71 1/2-1 HP	30	* 20605R0475	MOTOR 2 HP II
25	* 4405010164	ANILHA DEFLECTORA C.80 1,5-3 HP	30	* 20606R0475	MOTOR 2 HP III
26	* 4405010146	CONJUNTO VENTILLADOR-TAMPA 0,5 HP	30	* 22341R0475	MOTOR 3 HP II
26	* 4405010147	CONJUNTO VENTILLADOR-TAMPA 0,75 - 1	30	* 20607R0475	MOTOR 3 HP III

CODIGO **69221, 69222, 69223, 69224, 69225, 69226, 69227, 69228, 69229, 69230, 69231, 69232**

DESCRIÇÃO: BOMBA L.F.M.

OBSERVAÇÕES

POS	CODIGO	OBSERVAÇÕES
6	* 4405010717	PARA: 69231, 69232
7	* 4405010106	PARA: 69221, 69222, 69223, 69224, 69225, 69226
7	* 4405010107	PARA: 69227, 69228, 69229, 69230, 69231, 69232
10	* 4405010111	PARA: 69221, 69222
10	* 4405010112	PARA: 69222, 69223, 69224, 69225, 69226
10	* 4405010113	PARA: 69227, 69228, 69229, 69230, 69232
10	* 4405010180	PARA: 69231
12	* 4405010115	PARA: 69221, 69222, 69223, 69224
12	* 4405010116	PARA: 69225, 69226, 69227, 69228
12	* 4405010117	PARA: 69229, 69230, 69231, 69232
13	* 4405010134	PARA: 69222, 69224, 69226, 69228, 69230, 69232
14	* 4405010591	PARA: 69221
14	* 4405010592	PARA: 69222
14	* 4405010750	PARA: 69223
14	* 4405010751	PARA: 69224
14	* 4405010752	PARA: 69225
14	* 4405010753	PARA: 69226
14	* 4405010754	PARA: 69227
14	* 4405010755	PARA: 69228
14	* 4405010756	PARA: 69229
14	* 4405010757	PARA: 69230
14	* 4405010601	PARA: 69231
14	* 4405010602	PARA: 69232
18	* 4405011114	PARA: 69221, 69222, 69223, 69224, 69225, 69226
18	* 4405011115	PARA: 69227, 69228, 69229, 69230, 69231, 69232
21	* 4405012212	PARA: 69221, 69222
21	* 4405012213	PARA: 69223, 69224, 69225, 69226, 69227, 69228
21	* 4405012214	PARA: 69229, 69230, 69232
21	* 4405012215	PARA: 69231
22	* 4405010135	PARA: 69221, 69222, 69223, 69224, 69225, 69226
22	* 4405010136	PARA: 69227, 69228, 69229, 69230, 69232
22	* 4405010171	PARA: 69231
23	* 4405010143	PARA: 69221, 69222
23	* 4405010144	PARA: 69223, 69224, 69225, 69226
23	* 4405010145	PARA: 69227, 69228, 69229, 69230, 69232
23	* 4405010169	PARA: 69231
24	* 4405012216	PARA: 69221, 69222
24	* 4405012217	PARA: 69223, 69224, 69225, 69226
24	* 4405012218	PARA: 69227, 69228, 69229, 69230, 69232
24	* 4405012219	PARA: 69231
25	* 4405010163	PARA: 69221, 69222, 69223, 69224, 69225, 69226
25	* 4405010164	PARA: 69227, 69228, 69229, 69230, 69231, 69232
26	* 4405010146	PARA: 69221, 69222

CODIGO **69221, 69222, 69223, 69224, 69225, 69226, 69227, 69228, 69229, 69230, 69231, 69232**

DESCRIÇÃO: BOMBA L.F.M.

26	* 4405010147	PARA: 69223, 69224, 69225, 69226
26	* 4405010148	PARA: 69227, 69228, 69229, 69230, 69232
26	* 4405010170	PARA: 69231
27	* 4405010149	PARA: 69221, 69222
27	* 4405020121	PARA: 69223, 69224
27	* 4405020122	PARA: 69225, 69226
27	* 4405010150	PARA: 69227, 69228
27	* 4405010174	PARA: 69229, 69230
27	* 4405010175	PARA: 69231, 69232
28	* 4405012220	PARA: 69227
28	* 4405012221	PARA: 69229
28	* 4405012053	PARA: 69231
29	* 4405010154	PARA: 69221, 69223, 69225
29	* 4405010155	PARA: 69227, 69229, 69231
29	* 4405010156	PARA: 69222, 69224, 69226
29	* 4405010157	PARA: 69228, 69230, 69232
30	* 20597R0475	PARA: 69221
30	* 20598R0475	PARA: 69222
30	* 20599R0475	PARA: 69223
30	* 20600R0475	PARA: 69224
30	* 20601R0475	PARA: 69225
30	* 20602R0475	PARA: 69226
30	* 20603R0575	PARA: 69227
30	* 20604R0575	PARA: 69228
30	* 20605R0475	PARA: 69229
30	* 20606R0475	PARA: 69230
30	* 22341R0475	PARA: 69231
30	* 20607R0475	PARA: 69232