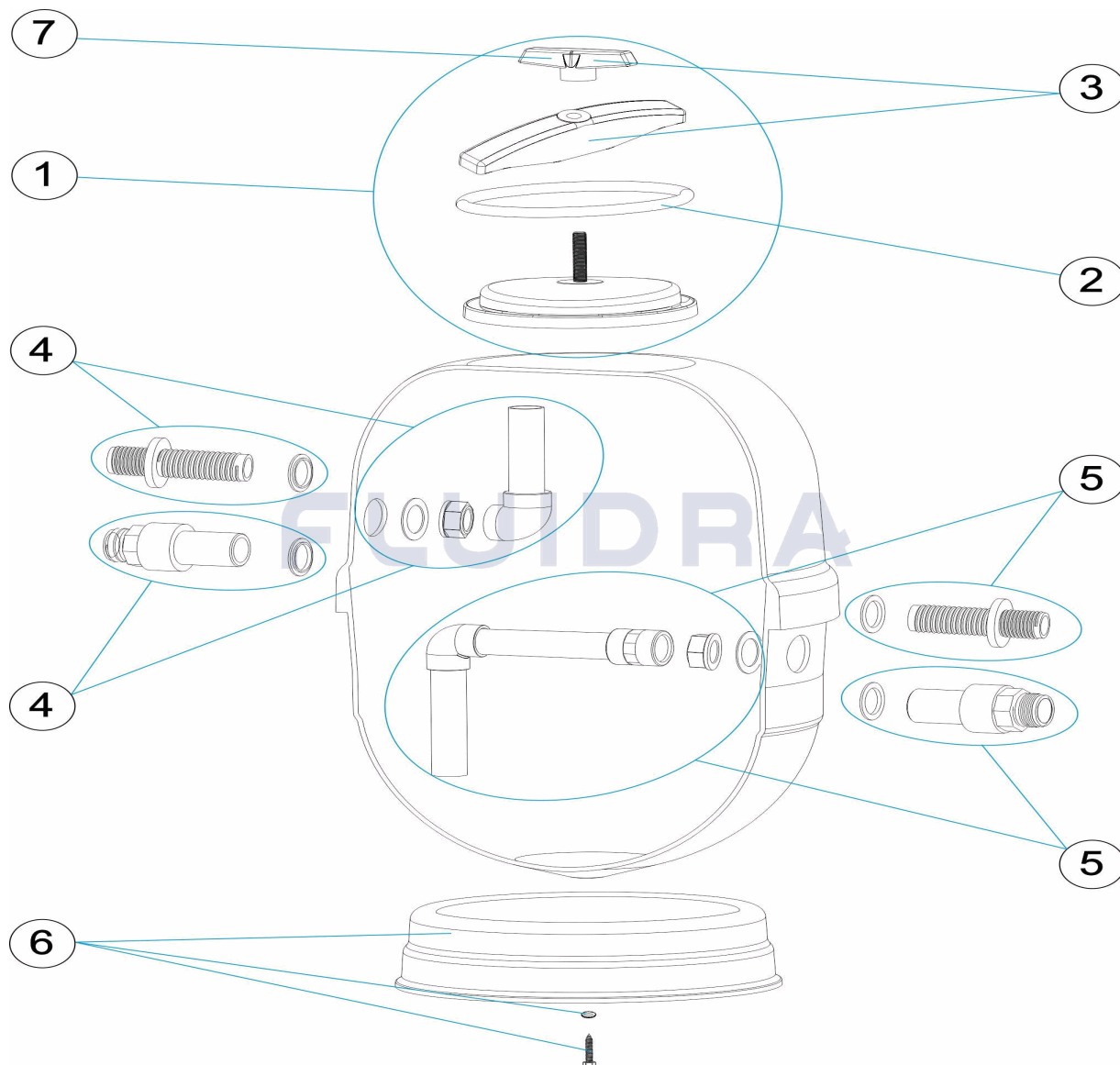


CODIGO **16631, 16632**

DESCRIPCION: **DOSIFICADOR CLORIMAX 40 - 60 LITROS**



ESPAÑOL

POS	CODIGO	DESCRIPCION	CANTIDAD	POS	CODIGO	DESCRIPCION	CANTIDAD
1	4408010401	TAPA CLORIMAX		5	* 4408010402	ENTRADA 40 L. CLORIMAX	
2	4408010409	JUNTA TORICA 210X9 VITON		5	* 4408010404	ENTRADA 60 L. CLORIMAX	
3	4404200206	MANETA Y CIERRE ABONADOR (POSTERIK		6	4408010406	PIE CLORIMAX	
4	* 4408010403	SALIDA 40 L. CLORIMAX		7	4404200207	MANETA CLORIMAX	
4	* 4408010405	SALIDA 60 L. CLORIMAX					

CODIGO 16631, 16632

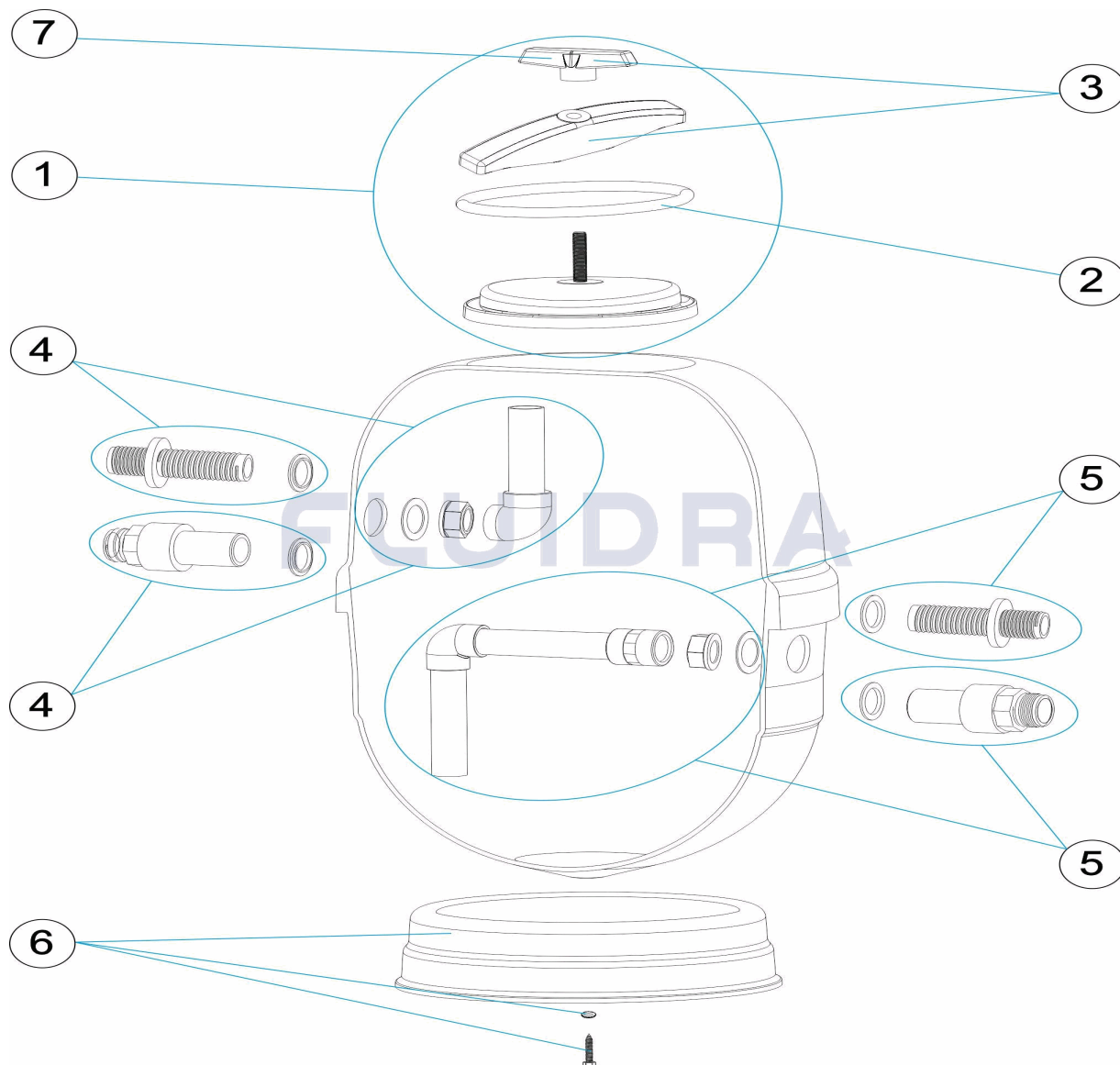
DESCRIPCION: DOSIFICADOR CLORIMAX 40 - 60 LITROS

OBSERVACIONES

POS	CODIGO	OBSERVACIONES
4	* 4408010403	PARA: 16631
4	* 4408010405	PARA: 16632
5	* 4408010402	PARA: 16631
5	* 4408010404	PARA: 16632

CODE 16631, 16632

DESCRIPTION: DISTRIBUTEUR CLORIMAX 40 - 60 LITRES



FRANCAIS

POS	CODE	DESCRIPTION	QUANTITE	POS	CODE	DESCRIPTION	QUANTITE
1	4408010401	COUVERCLE CLORIMAX		5	* 4408010402	ENTREE CLORIMAX 40 L.	
2	4408010409	JOINT TORIQUE 210X9 VITON		5	* 4408010404	ENTREE 60 L. CLORIMAX	
3	4404200206	MANETTE ET FERMETURE DISTRIBUTEUR		6	4408010406	PIED DE CLORIMAX	
4	* 4408010403	SORTIE 40 L. CLORIMAX		7	4404200207	MANETTE CLORIMAX	
4	* 4408010405	SORTIE CLORIMAX 60 L.					

CODE **16631, 16632**

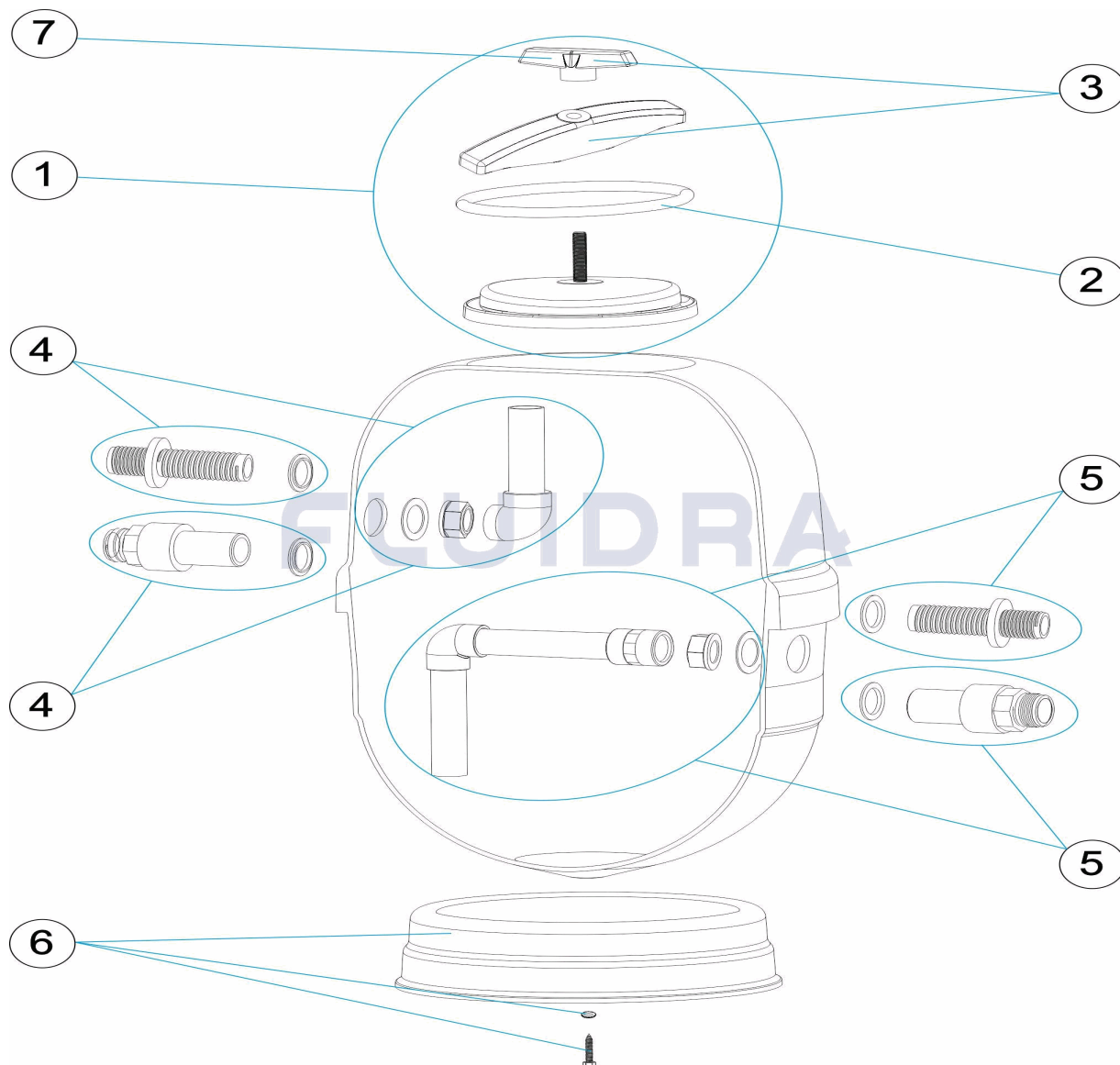
DESCRIPTION: **DISTRIBUTEUR CLORIMAX 40 - 60 LITRES**

OBSERVATIONS

POS	CODE	OBSERVATIONS
4	* 4408010403	POUR: 16631
4	* 4408010405	POUR: 16632
5	* 4408010402	POUR: 16631
5	* 4408010404	POUR: 16632

CODE 16631, 16632

DESCRIPTION: CLORIMAX DISPENSER 40 - 60 LITRES



ENGLISH

POS	CODE	DESCRIPTION	QUANTITY	POS	CODE	DESCRIPTION	QUANTITY
1	4408010401	CLORIMAX LID		5	* 4408010402	CLORIMAX INLET 40 L.	
2	4408010409	O' RING 210X9 VITON		5	* 4408010404	CLORIMAX INLET 60 L.	
3	4404200206	HANDLE AND LID FOR FERTILIZER TANK (L)		6	4408010406	CLORIMAX BASE	
4	* 4408010403	CLORIMAX OUTLET 40 L.		7	4404200207	CLORIMAX HANDLE	
4	* 4408010405	CLORIMAX OUTLET 60 L.					

CODE **16631, 16632**

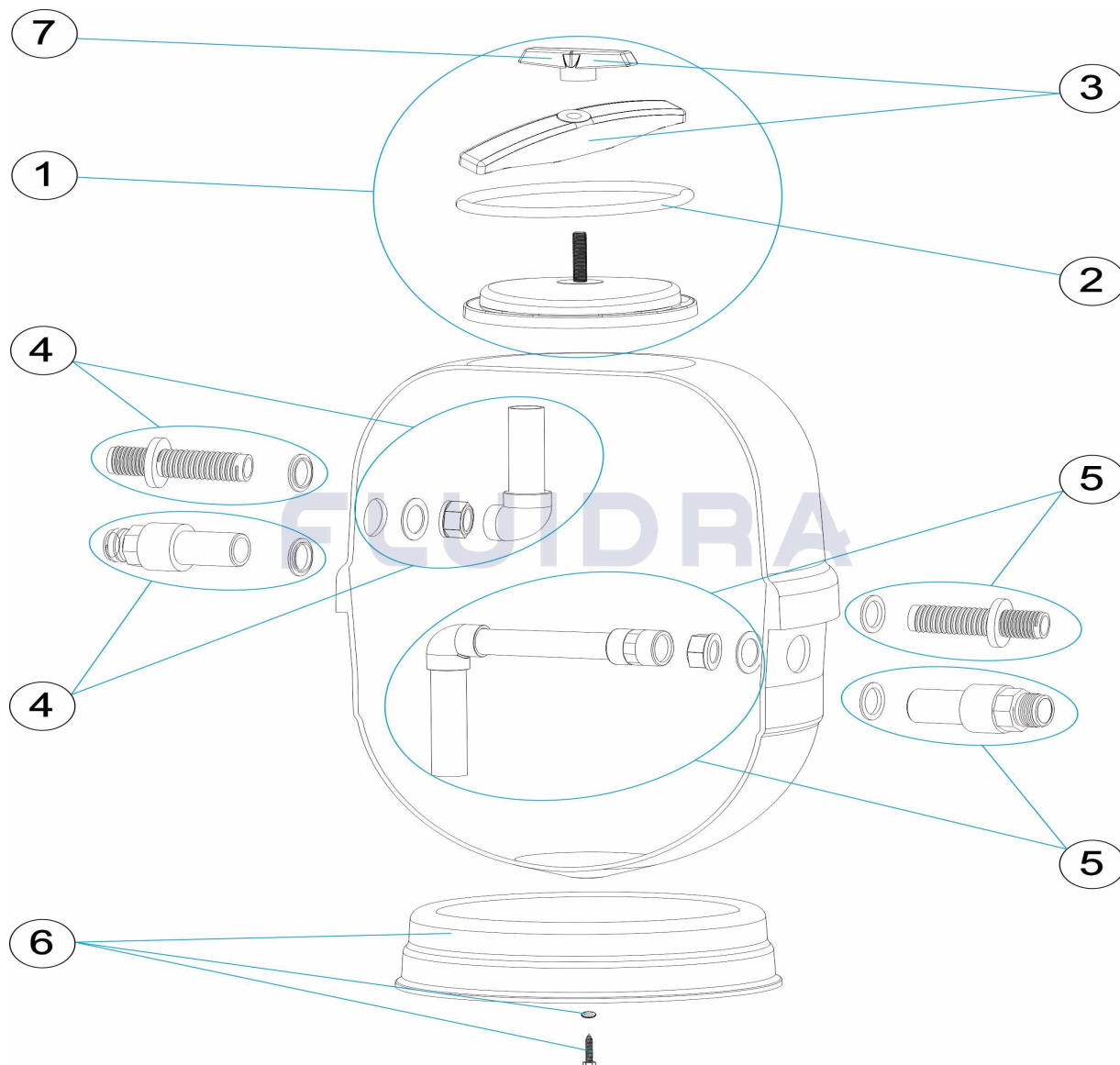
DESCRIPTION: **CLORIMAX DISPENSER 40 - 60 LITRES**

OBSERVATIONS

POS	CODE	OBSERVATIONS
4	* 4408010403	FOR: 16631
4	* 4408010405	FOR: 16632
5	* 4408010402	FOR: 16631
5	* 4408010404	FOR: 16632

CODICE **16631, 16632**

DESCRIZIONE: **DOSIFICATORE CLORIMAX 40 - 60 LITRI**



ITALIANO

POS	CODICE	DESCRIZIONE	QUANTITA'	POS	CODICE	DESCRIZIONE	QUANTITA'
1	4408010401	COPERCHIO CLORIMAX		5	* 4408010402	ENTRATA 40 L. CLORIMAX	
2	4408010409	O-RING 210X9 VITON		5	* 4408010404	ENTRATA 60 L. CLORIMAX	
3	4404200206	MANIGLIA E CHIUSURA SERBATOIO (2009)		6	4408010406	PIEDE CLORIMAX	
4	* 4408010403	USCITA 40 L. CLORIMAX		7	4404200207	MANIGLIA CLORIMAX	
4	* 4408010405	USCITA 60 L. CLORIMAX					

CODICE 16631, 16632

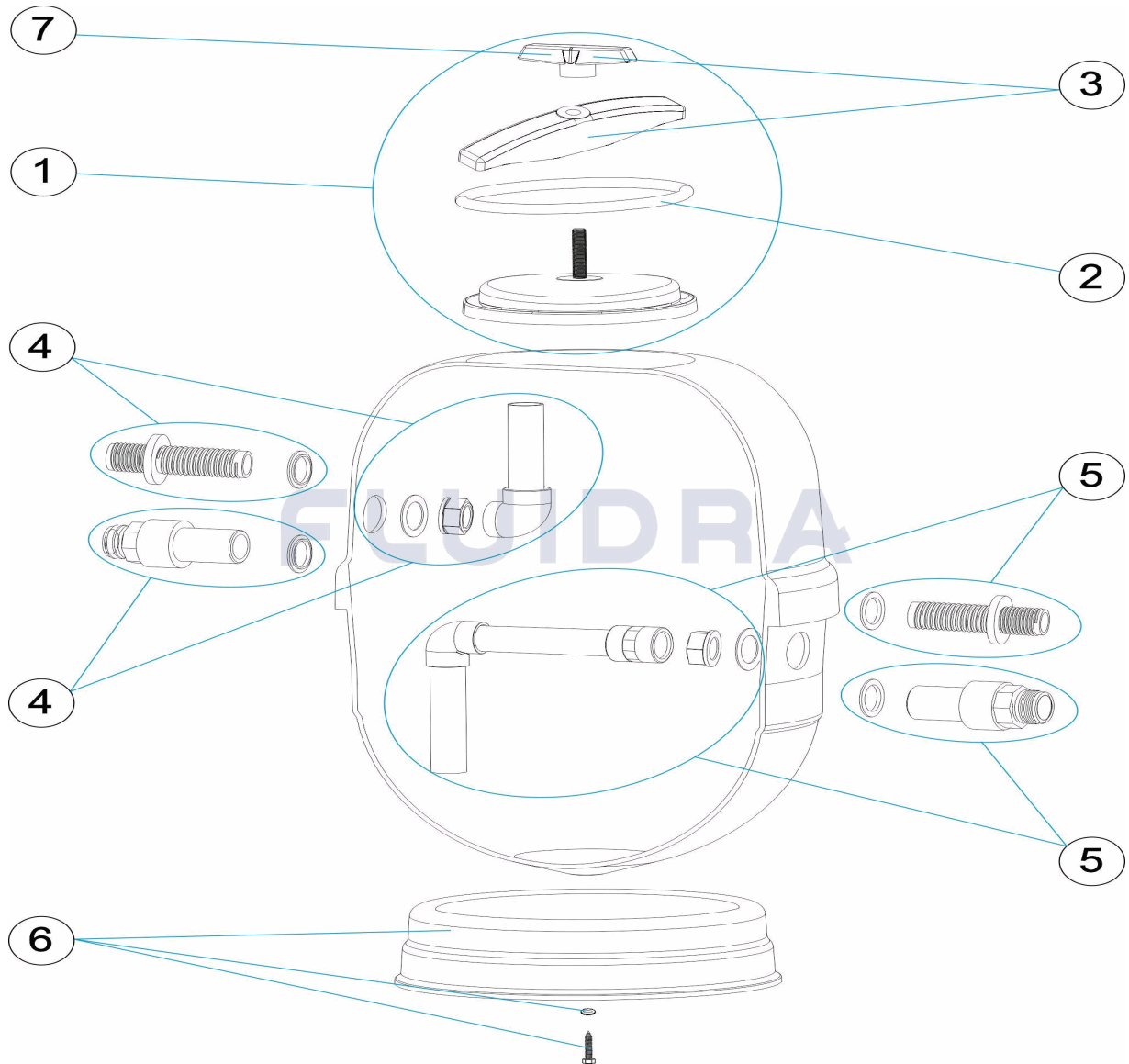
DESCRIZIONE: DOSIFICATORE CLORIMAX 40 - 60 LITRI

OSSERVAZIONI

POS	CODICE	OSSERVAZIONI
4	* 4408010403	PER: 16631
4	* 4408010405	PER: 16632
5	* 4408010402	PER: 16631
5	* 4408010404	PER: 16632

CODE **16631, 16632**

BESCHREIBUNG: **DOSIERGERÄT CLORIMAX 40 - 60 L**



DEUTSCH

POS	CODE	BESCHREIBUNG	MENGE	POS	CODE	BESCHREIBUNG	MENGE
1	4408010401	ABDECKUNG CLORIMAX		5	* 4408010402	EINGANG 40 L CLORIMAX	
2	4408010409	O-RING 210 X 9 VITON		5	* 4408010404	EINGANG 60 L CLORIMAX	
3	4404200206	GRIFF UND SCHLIESSVORRICHTUNG DÜN		6	4408010406	FUSS CLORIMAX	
4	* 4408010403	AUSGANG 40 L CLORIMAX		7	4404200207	GRIFF CLORIMAX	
4	* 4408010405	AUSGANG 60 L CLORIMAX					

CODE **16631, 16632**

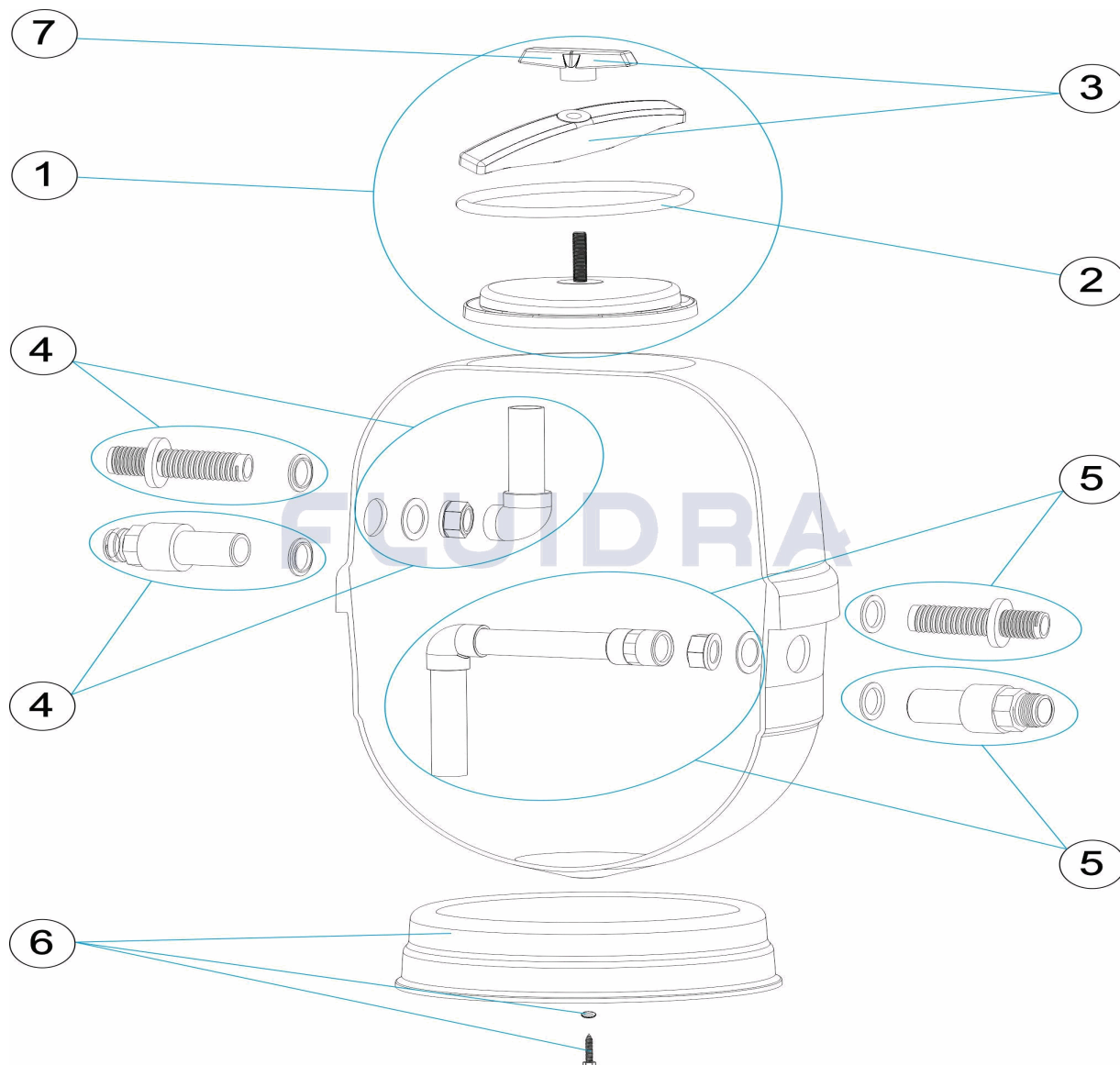
BESCHREIBUNG: **DOSIERGERÄT CLORIMAX 40 - 60 L**

HINWEISE

POS	CODE	HINWEISE
4	* 4408010403	FÜR: 16631
4	* 4408010405	FÜR: 16632
5	* 4408010402	FÜR: 16631
5	* 4408010404	FÜR: 16632

CODIGO **16631, 16632**

DESCRIÇÃO: **DOSEADOR CLORIMAX 40 - 60 LITROS**



PORTUGUES

POS	CODIGO	DESCRIÇÃO	JANTIDADE	POS	CODIGO	DESCRIÇÃO	JANTIDADE
1	4408010401	TAMPA CLORIMAX		5	* 4408010402	ENTRADA 40 L. CLORIMAX	
2	4408010409	JUNTA TÓRICA 210X9 VITON		5	* 4408010404	ENTRADA 60 L. CLORIMAX	
3	4404200206	MANIPULO FECHO (2009)		6	4408010406	BASE CLORIMAX	
4	* 4408010403	SAÍDA 40 L. CLORIMAX		7	4404200207	MANIPULO CLORIMAX	
4	* 4408010405	SAÍDA 60 L. CLORIMAX					

CODIGO 16631, 16632

DESCRIÇÃO: DOSEADOR CLORIMAX 40 - 60 LITROS

OBSERVAÇÕES

POS	CODIGO	OBSERVAÇÕES
4	* 4408010403	PARA: 16631
4	* 4408010405	PARA: 16632
5	* 4408010402	PARA: 16631
5	* 4408010404	PARA: 16632