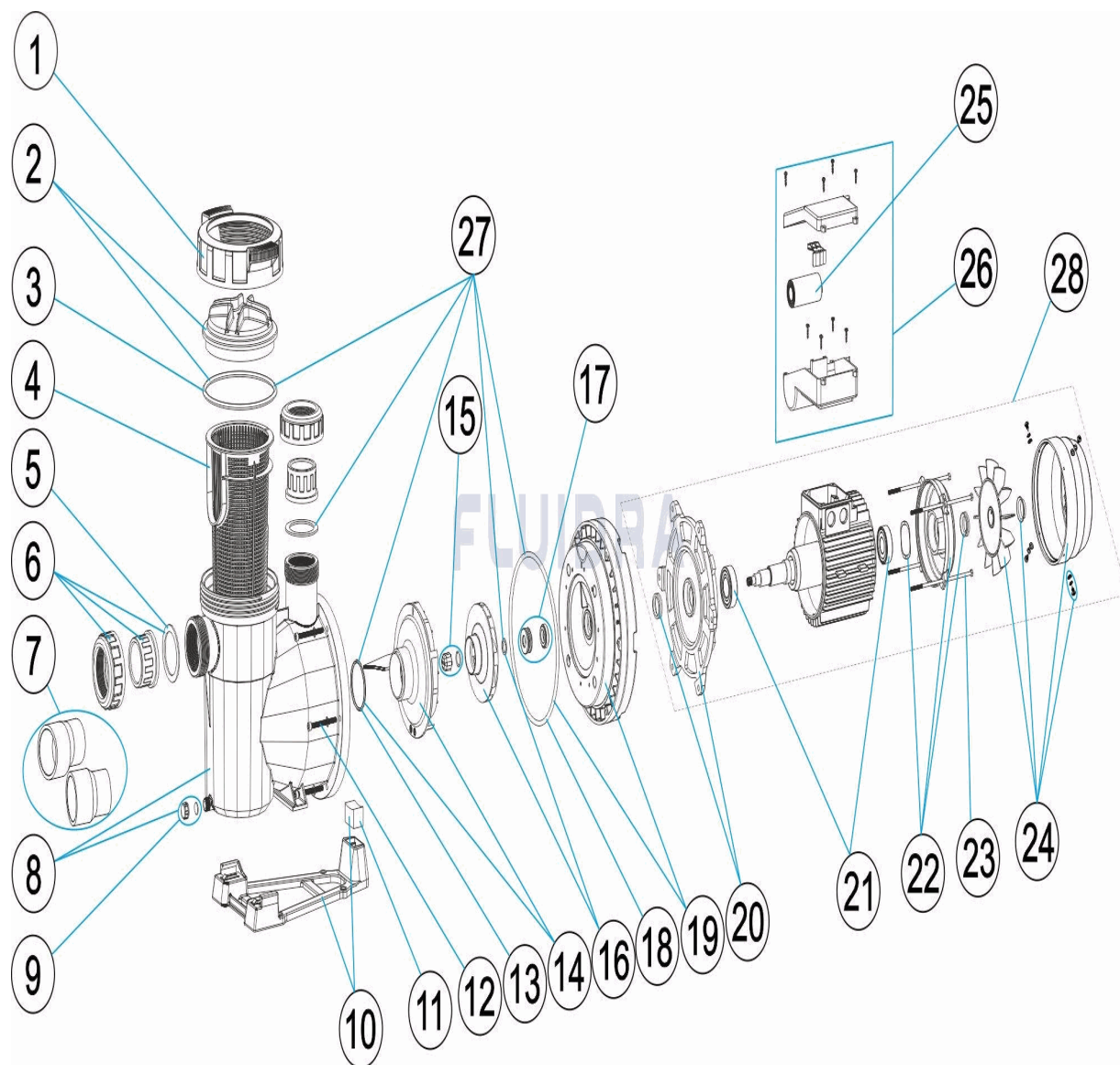


CODIGO 65557H, 65558H, 65560H, 65561H, 65562H, 65563H, 65564H, 65565H, 65566H, 65567H, 65569H, 65570H

DESCRIPCION: BOMBA VICTORIA PLUS SILENT H


ESPAÑOL

| POS | CODIGO | DESCRIPCION | CANTIDAD | POS | CODIGO | DESCRIPCION | CANTIDAD |
|-----|--------------|-----------------------------------|----------|-----|--------------|------------------------------|----------|
| 1 | 4405010585 | TUERCA TAPA PREFILTRO | | 11 | * 4405010180 | UNION HIDRAULICA PIE 3 HP II | |
| 2 | 4405010702 | TAPA PREFILTRO | | 12 | 4405010590 | TORNILLO FIJACION CUERPO | |
| 3 | 4405010178 | JUNTA TORICA D. 151,7X6,99 | | 13 | 4405010161 | JUNTA TORICA D. 56,7X3,5 | |
| 4 | 4405010105 | CESTO PREFILTRO | | 14 | * 4405010115 | DIFUSOR <=0,75 HP | |
| 5 | 4405010179 | JUNTA PLANA 72X55X2,5 | | 14 | * 4405010116 | DIFUSOR 1 HP - 2 HP | |
| 6 | * 4405010106 | ACCESORIOS ENLACE <= 1 HP | | 14 | * 4405010117 | DIFUSOR 2,5 - 3 HP | |
| 6 | * 4405010107 | ACCESORIOS ENLACE 1,5 HP - 2,5 HP | | 15 | * 4405010134 | TAPÓN RODETE M8 IZQUIERDA | |
| 7 | * 4405010717 | ACCESORIOS ENLACE 3 HP | | 16 | * 4405010591 | RODETE ½ (II) HP | |
| 8 | 4405010586 | CUERPO BOMBA | | 16 | * 4405010667 | RODETE ½ (II) HP 60 HZ | |
| 9 | 4405010587 | TAPON PURGA | | 16 | * 4405010592 | RODETE ½ (III) HP | |
| 10 | * 4405010588 | PIE BOMBA | | 16 | * 4405010668 | RODETE ½ (III) HP 60 HZ | |
| 10 | * 4405010492 | PIE BOMBA | | 16 | * 4405010593 | RODETE ¾ (II) HP | |

* NOTA OBSERVACIONES

CODIGO 65557H, 65558H, 65560H, 65561H, 65562H, 65563H, 65564H, 65565H, 65566H, 65567H, 65569H, 65570H

DESCRIPCION: BOMBA VICTORIA PLUS SILENT H

| | | | | | |
|----|--------------|------------------------------------|----|--------------|------------------------------------|
| 10 | * 4405010589 | PIE BOMBA | 16 | * 4405010669 | RODETE ¼ (II) HP 60 HZ |
| 11 | * 4405010112 | UNIÓN HIDRÁULICA PIE 0,75 - 1,5 HP | 16 | * 4405010594 | RODETE ¼ (III) HP |
| 11 | * 4405010113 | UNIÓN HIDRÁULICA PIE 1,5 HP - 3 HP | 16 | * 4405010670 | RODETE ¼ (III) HP 60 HZ |
| 16 | * 4405010595 | RODETE 1 (II) HP | 23 | * 4405010145 | VARILLAS MOTOR 1,5 - 3 HP III |
| 16 | * 4405010671 | RODETE 1 (II) HP 60 HZ | 23 | * 4405010169 | VARILLAS MOTOR (90) 3 HP II |
| 16 | * 4405010596 | RODETE 1 (III) HP | 24 | * 4405010635 | CJTO. VENTILADOR-TAPA |
| 16 | * 4405010672 | RODETE 1 (III) HP 60 HZ | 24 | * 4405010636 | CJTO. VENTILADOR-TAPA |
| 16 | * 4405010597 | RODETE 1,5 (II) HP | 24 | * 4405010637 | CJTO. VENTILADOR-TAPA |
| 16 | * 4405010673 | RODETE 1,5 (II) HP 60 HZ | 25 | * 4405010149 | CONDENSADOR 12 UF 1/2 CV |
| 16 | * 4405010598 | RODETE 1,5 (III) HP | 25 | * 4405020121 | CONDENSADOR 14 UF 3/4 CV |
| 16 | * 4405010674 | RODETE 1,5 (III) HP 60 HZ | 25 | * 4405020122 | CONDENSADOR 16 UF 1 CV |
| 16 | * 4405010599 | RODETE 2 (II) HP | 25 | * 4405010150 | CONDENSADOR 18 UF 1,5 CV |
| 16 | * 4405010675 | RODETE 2 (II) HP 60 HZ | 25 | * 4405010174 | CONDENSADOR 32 UF 2 CV |
| 16 | * 4405010600 | RODETE 2 (III) HP | 25 | * 4405010175 | CONDENSADOR 40 UF 2,5-3 CV |
| 16 | * 4405010676 | RODETE 2 (III) HP 60 HZ | 26 | * 4405010983 | CJTO. CAJA BORNES C. 63-71 II |
| 16 | * 4405010601 | RODETE 3 (II) HP | 26 | * 4405010984 | CJTO. CAJA BORNES (MOTOR II) C.80 |
| 16 | * 4405010677 | RODETE 3 (II) HP 60 HZ | 26 | * 4405010985 | CJTO. CAJA BORNES C.63-71 III |
| 16 | * 4405010602 | RODETE 3 (III) HP | 26 | * 4405010986 | CJTO. CAJA BORNES (MOTOR III) C.80 |
| 16 | * 4405010678 | RODETE 3 (III) HP 60 HZ | 27 | 4405010860 | JUNTAS DE GOMA |
| 17 | 4405010987 | JUNTA MECÁNICA | 28 | * 65557R0475 | MOTOR ½ HP II |
| 18 | 4405010487 | JUNTA TORICA | 28 | * 65558R0475 | MOTOR 1/2 HP III |
| 19 | 4405010982 | BRIDA SELLO MECÁNICO | 28 | * 65560R0475 | MOTOR 3/4 HP II |
| 20 | * 4405010604 | BRIDA MOTOR DELANTERA | 28 | * 65561R0475 | MOTOR 3/4 HP III |
| 20 | * 4405010607 | BRIDA MOTOR DELANTERA | 28 | * 65562R0475 | MOTOR 1 HP II |
| 20 | * 4405010608 | BRIDA MOTOR DELANTERA | 28 | * 65563R0475 | MOTOR 1 HP III |
| 21 | * 4405010609 | RODAMIENTO MOTOR < 1 HP | 28 | * 65564R0475 | MOTOR 1,5 HP II |
| 21 | * 4405010610 | RODAMIENTO MOTOR 1,5 - 3 HP | 28 | * 65565R0475 | MOTOR 1,5 HP III |
| 21 | * 4405012039 | RODAMIENTO DELANTERO Y TRASERO | 28 | * 65566R0475 | MOTOR 2 HP II |
| 22 | * 4405010612 | TAPA MOTOR MEC. C.71 C/CAJERA D35 | 28 | * 65567R0475 | MOTOR 2 HP III |
| 22 | * 4405010614 | TAPA MOTOR MEC. C.80 C/CAJERA D47 | 28 | * 65569R0475 | MOTOR 3 HP II |
| 22 | * 4405010615 | TAPA MOTOR MEC. C.90 C/CAJERA D52 | 28 | * 65570R0475 | MOTOR 3 HP III |
| 23 | * 4405010144 | VARILLAS MOTOR 0,75 - 1 HP | | | |

CODIGO **65557H, 65558H, 65560H, 65561H, 65562H, 65563H, 65564H, 65565H, 65566H, 65567H, 65569H, 65570H**

DESCRIPCION: BOMBA VICTORIA PLUS SILENT H

OBSERVACIONES

| POS | CODIGO | OBSERVACIONES |
|-----|--------------|--|
| 6 | * 4405010106 | PARA: 65557H, 65558H, 65560H, 65561H, 65562H, 65563H |
| 6 | * 4405010107 | PARA: 65564H, 65565H, 65566H, 65567H, 65569H, 65570H |
| 7 | * 4405010717 | PARA: 65569H, 65570H |
| 10 | * 4405010588 | PARA: 65557H, 65558H, 65560H, 65561H, 65562H, 65563H |
| 10 | * 4405010492 | PARA: 65564H, 65565H, 65566H, 65567H, 65570H |
| 10 | * 4405010589 | PARA: 65569H |
| 11 | * 4405010112 | PARA: 65557H, 65558H, 65560H, 65561H, 65562H, 65563H |
| 11 | * 4405010113 | PARA: 65564H, 65565H, 65566H, 65567H, 65570H |
| 11 | * 4405010180 | PARA: 65569H |
| 14 | * 4405010115 | PARA: 65557H, 65558H, 65560H, 65561H |
| 14 | * 4405010116 | PARA: 65562H, 65563H, 65564H, 65565H, 65566H, 65567H |
| 14 | * 4405010117 | PARA: 65569H, 65570H |
| 15 | * 4405010134 | PARA: 65558H, 65561H, 65563H, 65565H, 65567H, 65570H |
| 16 | * 4405010591 | PARA: 65557H |
| 16 | * 4405010667 | PARA: 65557H 60 HZ |
| 16 | * 4405010592 | PARA: 65558H |
| 16 | * 4405010668 | PARA: 65558H 60 HZ |
| 16 | * 4405010593 | PARA: 65560H |
| 16 | * 4405010669 | PARA: 65560H 60 HZ |
| 16 | * 4405010594 | PARA: 65561H |
| 16 | * 4405010670 | PARA: 65561H 60 HZ |
| 16 | * 4405010595 | PARA: 65562H |
| 16 | * 4405010671 | PARA: 65562H 60 HZ |
| 16 | * 4405010596 | PARA: 65563H |
| 16 | * 4405010672 | PARA: 65563H 60 HZ |
| 16 | * 4405010597 | PARA: 65564H |
| 16 | * 4405010673 | PARA: 65564H 60 HZ |
| 16 | * 4405010598 | PARA: 65565H |
| 16 | * 4405010674 | PARA: 65565H 60 HZ |
| 16 | * 4405010599 | PARA: 65566H |
| 16 | * 4405010675 | PARA: 65566H 60 HZ |
| 16 | * 4405010600 | PARA: 65567H |
| 16 | * 4405010676 | PARA: 65567H 60 HZ |
| 16 | * 4405010601 | PARA: 65569H |
| 16 | * 4405010677 | PARA: 65569H 60 HZ |
| 16 | * 4405010602 | PARA: 65570H |
| 16 | * 4405010678 | PARA: 65570H 60 HZ |
| 20 | * 4405010604 | PARA: 65557H, 65558H, 65560H, 65561H, 65562H, 65563H |
| 20 | * 4405010607 | PARA: 65564H, 65565H, 65566H, 65567H, 65570H |
| 20 | * 4405010608 | PARA: 65569H |
| 21 | * 4405010609 | PARA: 65557H, 65558H, 65560H, 65561H, 65562H, 65563H |
| 21 | * 4405010610 | PARA: 65564H, 65565H, 65566H, 65567H, 65570H |
| 21 | * 4405012039 | PARA: 65569H |

*** NOTA OBSERVACIONES**

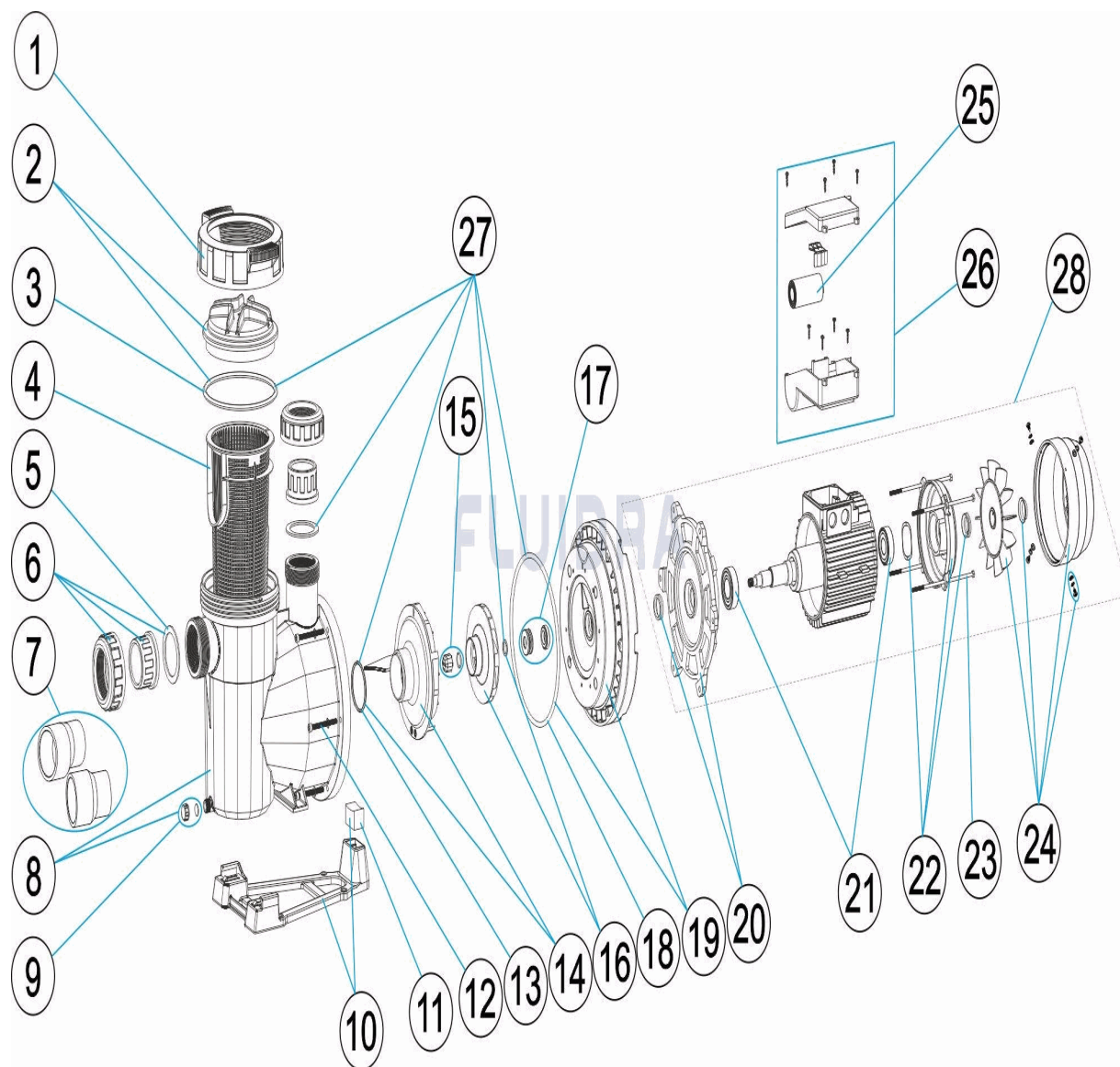
CODIGO **65557H, 65558H, 65560H, 65561H, 65562H, 65563H, 65564H, 65565H, 65566H, 65567H, 65569H, 65570H**

DESCRIPCION: BOMBA VICTORIA PLUS SILENT H

| | | |
|----|--------------|--|
| 22 | * 4405010612 | PARA: 65557H, 65558H, 65560H, 65561H, 65562H, 65563H |
| 22 | * 4405010614 | PARA: 65564H, 65565H, 65566H, 65567H, 65570H |
| 22 | * 4405010615 | PARA: 65569H |
| 23 | * 4405010144 | PARA: 65557H, 65558H, 65560H, 65561H, 65562H, 65563H |
| 23 | * 4405010145 | PARA: 65564H, 65565H, 65566H, 65567H, 65570H |
| 23 | * 4405010169 | PARA: 65569H |
| 24 | * 4405010635 | PARA: 65557H, 65558H, 65560H, 65561H, 65562H, 65563H |
| 24 | * 4405010636 | PARA: 65564H, 65565H, 65566H, 65567H, 65570H |
| 24 | * 4405010637 | PARA: 65569H |
| 25 | * 4405010149 | PARA: 65557H |
| 25 | * 4405020121 | PARA: 65560H |
| 25 | * 4405020122 | PARA: 65562H |
| 25 | * 4405010150 | PARA: 65564H |
| 25 | * 4405010174 | PARA: 65566H |
| 25 | * 4405010175 | PARA: 65569H |
| 26 | * 4405010983 | PARA: 65557H, 65560H, 65562H |
| 26 | * 4405010984 | PARA: 65564H, 65566H, 65569H |
| 26 | * 4405010985 | PARA: 65558H, 65561H, 65563H |
| 26 | * 4405010986 | PARA: 65565H, 65567H, 65570H |
| 28 | * 65557R0475 | PARA: 65557H |
| 28 | * 65558R0475 | PARA: 65558H |
| 28 | * 65560R0475 | PARA: 65560H |
| 28 | * 65561R0475 | PARA: 65561H |
| 28 | * 65562R0475 | PARA: 65562H |
| 28 | * 65563R0475 | PARA: 65563H |
| 28 | * 65564R0475 | PARA: 65564H |
| 28 | * 65565R0475 | PARA: 65565H |
| 28 | * 65566R0475 | PARA: 65566H |
| 28 | * 65567R0475 | PARA: 65567H |
| 28 | * 65569R0475 | PARA: 65569H |
| 28 | * 65570R0475 | PARA: 65570H |

CODE **65557H, 65558H, 65560H, 65561H, 65562H, 65563H, 65564H, 65565H, 65566H, 65567H, 65569H, 65570H**

DESCRIPTION: **POMPE VICTORIA PLUS SILENT H**



FRANCAIS

| POS | CODE | DESCRIPTION | QUANTITE | POS | CODE | DESCRIPTION | QUANTITE |
|-----|--------------|--------------------------------|----------|-----|--------------|-------------------------------------|----------|
| 1 | 4405010585 | ECROU COUVERCLE PREFILTRE | | 11 | * 4405010180 | RACCORD HYDRAULIQUE DE PIED 3 HP II | |
| 2 | 4405010702 | COUVERCLE PRÉFILTRE | | 12 | 4405010590 | VIS FIXATION CORPS | |
| 3 | 4405010178 | JOINT TORIQUE D 151,7X6,99 | | 13 | 4405010161 | JOINT TORIQUE D 56,7X3,5 | |
| 4 | 4405010105 | PANIER PRÉFILTRE | | 14 | * 4405010115 | DIFFUSEUR <= 0,75 HP | |
| 5 | 4405010179 | JOINT PLAT 72X55X2,5 | | 14 | * 4405010116 | DIFFUSEUR 1 HP - 2 HP | |
| 6 | * 4405010106 | RACCORDS UNION <= 1 HP | | 14 | * 4405010117 | DIFFUSEUR 2,5 - 3 HP | |
| 6 | * 4405010107 | RACCORDS UNION 1,5 HP - 2,5 HP | | 15 | * 4405010134 | BOUCHON BOUT AXE M8 IZQ. | |
| 7 | * 4405010717 | RACCORDS UNION 3 HP | | 16 | * 4405010591 | TURBINE ½ (II) HP | |
| 8 | 4405010586 | CORPS POMPE | | 16 | * 4405010667 | TURBINE ½ (II) HP 60 HZ | |
| 9 | 4405010587 | BOUCHON DE PURGUE | | 16 | * 4405010592 | TURBINE ½ (III) HP | |
| 10 | * 4405010588 | SOCLE POMPE | | 16 | * 4405010668 | TURBINE ½ (III) HP 60 HZ | |
| 10 | * 4405010492 | SOCLE POMPE | | 16 | * 4405010593 | TURBINE ¾ (II) HP | |

* VOIR FICHE D'OBSERVATIONS

CODE **65557H, 65558H, 65560H, 65561H, 65562H, 65563H, 65564H, 65565H, 65566H, 65567H, 65569H, 65570H**

DESCRIPTION: **POMPE VICTORIA PLUS SILENT H**

| | | | | | |
|----|--------------|--------------------------------------|----|--------------|---------------------------------------|
| 10 | * 4405010589 | SOCLE POMPE | 16 | * 4405010669 | TURBINE ¼ (II) HP 60 HZ |
| 11 | * 4405010112 | RACCORD HYDRAULIQUE DE PIED 0,75 - 1 | 16 | * 4405010594 | TURBINE ¼ (III) HP |
| 11 | * 4405010113 | RACCORD HYDRAULIQUE DE PIED 1,5 HP | 16 | * 4405010670 | TURBINE ¼ (III) HP 60 HZ |
| 16 | * 4405010595 | TURBINE 1 (II) HP | 23 | * 4405010145 | TIRANTS D'ACCOUPLLEMENT MOTEUR 1,5 - |
| 16 | * 4405010671 | TURBINE 1 (II) HP 60 HZ | 23 | * 4405010169 | TIRANTS D'ACCOUPLLEMENT MOTEUR (90) |
| 16 | * 4405010596 | TURBINE 1 (III) HP | 24 | * 4405010635 | ENSEMBLE COUVERCLE VENTILATEUR |
| 16 | * 4405010672 | TURBINE 1 (III) HP 60 HZ | 24 | * 4405010636 | ENSEMBLE COUVERCLE VENTILATEUR |
| 16 | * 4405010597 | TURBINE 1,5 (II) HP | 24 | * 4405010637 | ENSEMBLE COUVERCLE VENTILATEUR |
| 16 | * 4405010673 | TURBINE 1,5 (II) HP 60 HZ | 25 | * 4405010149 | CONDENSATEUR 12 UF 1/2 CV |
| 16 | * 4405010598 | TURBINE 1,5 (III) HP | 25 | * 4405020121 | CONDENSATEUR 14 UF 3/4 CV |
| 16 | * 4405010674 | TURBINE 1,5 (III) HP 60 HZ | 25 | * 4405020122 | CONDENSATEUR 16 UF 1 CV |
| 16 | * 4405010599 | TURBINE 2 (II) HP | 25 | * 4405010150 | CONDENSATEUR 18 UF |
| 16 | * 4405010675 | TURBINE 2 (II) HP 60 HZ | 25 | * 4405010174 | CONDENSATEUR 32 ?F 2 CV |
| 16 | * 4405010600 | TURBINE 2 (III) HP | 25 | * 4405010175 | CONDENSATEUR 40 ?F 2,5-3 CV |
| 16 | * 4405010676 | TURBINE 2 (III) HP 60 HZ | 26 | * 4405010983 | ENSEMBLE BOITIER CONNEXION C. 63-71 I |
| 16 | * 4405010601 | TURBINE 3 (II) HP | 26 | * 4405010984 | ENSEMBLE CAISSON BORNES (MOTEUR II |
| 16 | * 4405010677 | TURBINE 3 (II) HP 60 HZ | 26 | * 4405010985 | COUVERCLE BORNIER C 63-71 III |
| 16 | * 4405010602 | TURBINE 3 (III) HP | 26 | * 4405010986 | ENSEMBLE CAISSON BORNES (MOTEUR II |
| 16 | * 4405010678 | TURBINE 3 (III) HP 60 HZ | 27 | 4405010860 | JOINTS |
| 17 | 4405010987 | GARNITURE MÉCANIQUE | 28 | * 65557R0475 | MOTEUR ½ HP II |
| 18 | 4405010487 | JOINT TORIQUE | 28 | * 65558R0475 | MOTEUR ½ HP III |
| 19 | 4405010982 | FLASQUE PORTE GRANITURE | 28 | * 65560R0475 | MOTEUR 3/4 HP II |
| 20 | * 4405010604 | BRIDE MOTEUR AVANT | 28 | * 65561R0475 | MOTEUR 3/4 HP III |
| 20 | * 4405010607 | BRIDE MOTEUR AVANT | 28 | * 65562R0475 | MOTEUR 1 HP II |
| 20 | * 4405010608 | BRIDE MOTEUR AVANT | 28 | * 65563R0475 | MOTEUR 1 HP III |
| 21 | * 4405010609 | ROULEMENT MOTEUR < 1 HP | 28 | * 65564R0475 | MOTEUR 1,5 HP II |
| 21 | * 4405010610 | ROULEMENT MOTEUR 1,5 - 3 HP | 28 | * 65565R0475 | MOTEUR 1,5 HP III |
| 21 | * 4405012039 | ROULEMENT AVANT & ARRIÈRE | 28 | * 65566R0475 | MOTEUR 2 HP II |
| 22 | * 4405010612 | COUVERCLE MOTEUR MEC. C.71 ET RAIN | 28 | * 65567R0475 | MOTEUR 2 HP III |
| 22 | * 4405010614 | COUVERCLE MOTEUR MEC. C.80 ET RAIN | 28 | * 65569R0475 | MOTEUR 3 HP II |
| 22 | * 4405010615 | COUVERCLE MOTEUR MEC. C.90 ET RAIN | 28 | * 65570R0475 | MOTEUR 3 HP III |
| 23 | * 4405010144 | TIRANTS D'ACCOUPLLEMENT MOTEUR 0,75 | | | |

CODE **65557H, 65558H, 65560H, 65561H, 65562H, 65563H, 65564H, 65565H, 65566H, 65567H, 65569H, 65570H**

DESCRIPTION: **POMPE VICTORIA PLUS SILENT H**

OBSERVATIONS

| POS | CODE | OBSERVATIONS |
|-----|--------------|--|
| 6 | * 4405010106 | POUR: 65557H, 65558H, 65560H, 65561H, 65562H, 65563H |
| 6 | * 4405010107 | POUR: 65564H, 65565H, 65566H, 65567H, 65569H, 65570H |
| 7 | * 4405010717 | POUR: 65569H, 65570H |
| 10 | * 4405010588 | POUR: 65557H, 65558H, 65560H, 65561H, 65562H, 65563H |
| 10 | * 4405010492 | POUR: 65564H, 65565H, 65566H, 65567H, 65570H |
| 10 | * 4405010589 | POUR: 65569H |
| 11 | * 4405010112 | POUR: 65557H, 65558H, 65560H, 65561H, 65562H, 65563H |
| 11 | * 4405010113 | POUR: 65564H, 65565H, 65566H, 65567H, 65570H |
| 11 | * 4405010180 | POUR: 65569H |
| 14 | * 4405010115 | POUR: 65557H, 65558H, 65560H, 65561H |
| 14 | * 4405010116 | POUR: 65562H, 65563H, 65564H, 65565H, 65566H, 65567H |
| 14 | * 4405010117 | POUR: 65569H, 65570H |
| 15 | * 4405010134 | POUR: 65558H, 65561H, 65563H, 65565H, 65567H, 65570H |
| 16 | * 4405010591 | POUR: 65557H |
| 16 | * 4405010667 | POUR: 65557H 60 HZ |
| 16 | * 4405010592 | POUR: 65558H |
| 16 | * 4405010668 | POUR: 65558H 60 HZ |
| 16 | * 4405010593 | POUR: 65560H |
| 16 | * 4405010669 | POUR: 65560H 60 HZ |
| 16 | * 4405010594 | POUR: 65561H |
| 16 | * 4405010670 | POUR: 65561H 60 HZ |
| 16 | * 4405010595 | POUR: 65562H |
| 16 | * 4405010671 | POUR: 65562H 60 HZ |
| 16 | * 4405010596 | POUR: 65563H |
| 16 | * 4405010672 | POUR: 65563H 60 HZ |
| 16 | * 4405010597 | POUR: 65564H |
| 16 | * 4405010673 | POUR: 65564H 60 HZ |
| 16 | * 4405010598 | POUR: 65565H |
| 16 | * 4405010674 | POUR: 65565H 60 HZ |
| 16 | * 4405010599 | POUR: 65566H |
| 16 | * 4405010675 | POUR: 65566H 60 HZ |
| 16 | * 4405010600 | POUR: 65567H |
| 16 | * 4405010676 | POUR: 65567H 60 HZ |
| 16 | * 4405010601 | POUR: 65569H |
| 16 | * 4405010677 | POUR: 65569H 60 HZ |
| 16 | * 4405010602 | POUR: 65570H |
| 16 | * 4405010678 | POUR: 65570H 60 HZ |
| 20 | * 4405010604 | POUR: 65557H, 65558H, 65560H, 65561H, 65562H, 65563H |
| 20 | * 4405010607 | POUR: 65564H, 65565H, 65566H, 65567H, 65570H |
| 20 | * 4405010608 | POUR: 65569H |
| 21 | * 4405010609 | POUR: 65557H, 65558H, 65560H, 65561H, 65562H, 65563H |
| 21 | * 4405010610 | POUR: 65564H, 65565H, 65566H, 65567H, 65570H |
| 21 | * 4405012039 | POUR: 65569H |

* VOIR FICHE D'OBSERVATIONS

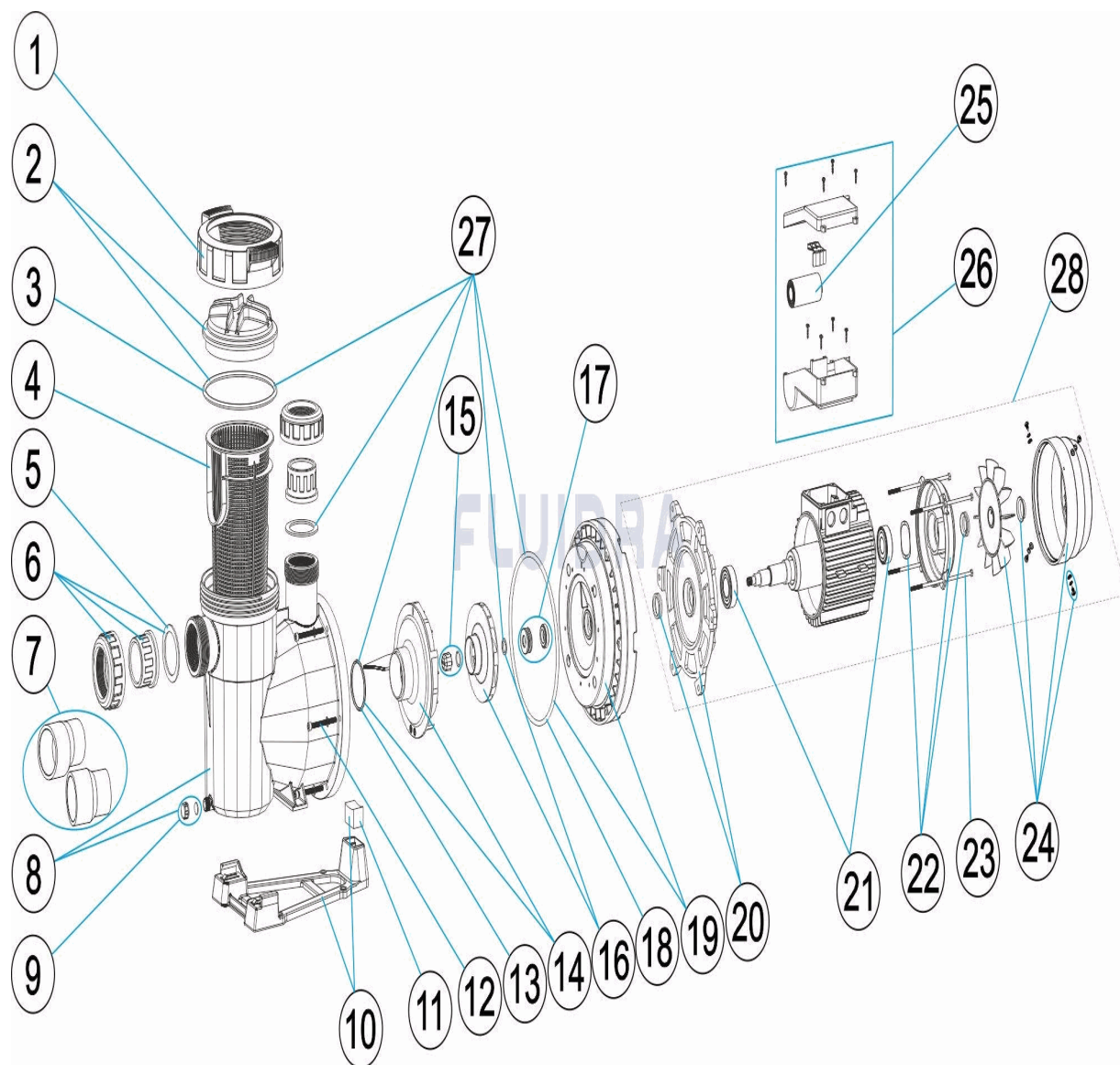
CODE **65557H, 65558H, 65560H, 65561H, 65562H, 65563H, 65564H, 65565H, 65566H, 65567H, 65569H, 65570H**

DESCRIPTION: POMPE VICTORIA PLUS SILENT H

| | | |
|----|--------------|--|
| 22 | * 4405010612 | POUR: 65557H, 65558H, 65560H, 65561H, 65562H, 65563H |
| 22 | * 4405010614 | POUR: 65564H, 65565H, 65566H, 65567H, 65570H |
| 22 | * 4405010615 | POUR: 65569H |
| 23 | * 4405010144 | POUR: 65557H, 65558H, 65560H, 65561H, 65562H, 65563H |
| 23 | * 4405010145 | POUR: 65564H, 65565H, 65566H, 65567H, 65570H |
| 23 | * 4405010169 | POUR: 65569H |
| 24 | * 4405010635 | POUR: 65557H, 65558H, 65560H, 65561H, 65562H, 65563H |
| 24 | * 4405010636 | POUR: 65564H, 65565H, 65566H, 65567H, 65570H |
| 24 | * 4405010637 | POUR: 65569H |
| 25 | * 4405010149 | POUR: 65557H |
| 25 | * 4405020121 | POUR: 65560H |
| 25 | * 4405020122 | POUR: 65562H |
| 25 | * 4405010150 | POUR: 65564H |
| 25 | * 4405010174 | POUR: 65566H |
| 25 | * 4405010175 | POUR: 65569H |
| 26 | * 4405010983 | POUR: 65557H, 65560H, 65562H |
| 26 | * 4405010984 | POUR: 65564H, 65566H, 65569H |
| 26 | * 4405010985 | POUR: 65558H, 65561H, 65563H |
| 26 | * 4405010986 | POUR: 65565H, 65567H, 65570H |
| 28 | * 65557R0475 | POUR: 65557H |
| 28 | * 65558R0475 | POUR: 65558H |
| 28 | * 65560R0475 | POUR: 65560H |
| 28 | * 65561R0475 | POUR: 65561H |
| 28 | * 65562R0475 | POUR: 65562H |
| 28 | * 65563R0475 | POUR: 65563H |
| 28 | * 65564R0475 | POUR: 65564H |
| 28 | * 65565R0475 | POUR: 65565H |
| 28 | * 65566R0475 | POUR: 65566H |
| 28 | * 65567R0475 | POUR: 65567H |
| 28 | * 65569R0475 | POUR: 65569H |
| 28 | * 65570R0475 | POUR: 65570H |

CODE 65557H, 65558H, 65560H, 65561H, 65562H, 65563H, 65564H, 65565H, 65566H, 65567H, 65569H, 65570H

DESCRIPTION: VICTORIA PLUS SILENT H PUMP



ENGLISH

| POS | CODE | DESCRIPTION | QUANTITY | POS | CODE | DESCRIPTION | QUANTITY |
|-----|--------------|--------------------------------|----------|-----|--------------|----------------------------|----------|
| 1 | 4405010585 | PRE-FILTER COVER NUT | | 11 | * 4405010180 | PUMP BASE FITTINGS 3 HP II | |
| 2 | 4405010702 | PRE-FILTER COVER | | 12 | 4405010590 | BODY FIXING SCREW | |
| 3 | 4405010178 | O' RING D 151,7X6,99 | | 13 | 4405010161 | O' RING D. 56,7X3,5 | |
| 4 | 4405010105 | PRE-FILTER BASKET | | 14 | * 4405010115 | DIFFUSEUR <= 0,75 HP | |
| 5 | 4405010179 | INLET GASKET 72X55X2,5 | | 14 | * 4405010116 | DIFFUSOR 1 HP - 2 HP | |
| 6 | * 4405010106 | UNION FITTINGS <= 1 HP | | 14 | * 4405010117 | DIFFUSOR 2,5 - 3 HP | |
| 6 | * 4405010107 | UNION FITTINGS 1,5 HP - 2,5 HP | | 15 | * 4405010134 | IMPELLER COVER M8 LEFT | |
| 7 | * 4405010717 | UNION FITTINGS 3 HP | | 16 | * 4405010591 | IMPELLER ½ (II) HP | |
| 8 | 4405010586 | PUMP HOUSING | | 16 | * 4405010667 | IMPELLER ½ (II) HP 60 HZ | |
| 9 | 4405010587 | DRAIN PLUG | | 16 | * 4405010592 | IMPELLER ½ (III) HP | |
| 10 | * 4405010588 | PUMP BASE | | 16 | * 4405010668 | IMPELLER ½ (III) HP 60 HZ | |
| 10 | * 4405010492 | PUMP BASE | | 16 | * 4405010593 | IMPELLER ¾ (II) HP | |

* SEE OBSERVATIONS SHEET

CODE **65557H, 65558H, 65560H, 65561H, 65562H, 65563H, 65564H, 65565H, 65566H, 65567H, 65569H, 65570H**

DESCRIPTION: **VICTORIA PLUS SILENT H PUMP**

| | | | | | |
|----|--------------|----------------------------------|----|--------------|--|
| 10 | * 4405010589 | PUMP BASE | 16 | * 4405010669 | IMPELLER ¼ (II) HP 60 HZ |
| 11 | * 4405010112 | PUMP BASE FITTINGS 0,75 - 1,5 HP | 16 | * 4405010594 | IMPELLER ¼ (III) HP |
| 11 | * 4405010113 | PUMP BASE FITTINGS 1,5 HP - 3 HP | 16 | * 4405010670 | IMPELLER ¼ (III) HP 60 HZ |
| 16 | * 4405010595 | IMPELLER 1 (II) HP | 23 | * 4405010145 | MOTOR TIES 1,5 - 3 HP III |
| 16 | * 4405010671 | IMPELLER 1 (II) HP 60 HZ | 23 | * 4405010169 | MOTOR TIES (90) 3 HP II |
| 16 | * 4405010596 | IMPELLER 1 (III) HP | 24 | * 4405010635 | FAN COVER ASSEMBLY |
| 16 | * 4405010672 | IMPELLER 1 (III) HP 60 HZ | 24 | * 4405010636 | FAN COVER ASSEMBLY |
| 16 | * 4405010597 | IMPELLER 1,5 (II) HP | 24 | * 4405010637 | FAN COVER ASSEMBLY |
| 16 | * 4405010673 | IMPELLER 1,5 (II) HP 60 HZ | 25 | * 4405010149 | CONDENSER 12 UF 1/2 CV |
| 16 | * 4405010598 | IMPELLER 1,5 (III) HP | 25 | * 4405020121 | CONDENSER 14 UF 3/4 CV |
| 16 | * 4405010674 | IMPELLER 1,5 (III) HP 60 HZ | 25 | * 4405020122 | CONDENSER 16 UF 1 CV |
| 16 | * 4405010599 | IMPELLER 2 (II) HP | 25 | * 4405010150 | CONDENSER 18 UF 1,5 CV |
| 16 | * 4405010675 | IMPELLER 2 (II) HP 60 HZ | 25 | * 4405010174 | CONDENSER 32 ?F 2 CV |
| 16 | * 4405010600 | IMPELLER 2 (III) HP | 25 | * 4405010175 | CONDENSER 40 ?F 2,5-3 CV |
| 16 | * 4405010676 | IMPELLER 2 (III) HP 60 HZ | 26 | * 4405010983 | TERMINAL BOX ASSEMBLY C. 63-71 II |
| 16 | * 4405010601 | IMPELLER 3 (II) HP | 26 | * 4405010984 | TERMINAL BOX ASSEMBLY (MOTOR II) C.80 |
| 16 | * 4405010677 | IMPELLER 3 (II) HP 60 HZ | 26 | * 4405010985 | TERMINAL BOX COVER C 63-71 III |
| 16 | * 4405010602 | IMPELLER 3 (III) HP | 26 | * 4405010986 | TERMINAL BOX ASSEMBLY (MOTOR III) C.80 |
| 16 | * 4405010678 | IMPELLER 3 (III) HP 60 HZ | 27 | 4405010860 | GASKETS |
| 17 | 4405010987 | MECHANICAL SEAL | 28 | * 65557R0475 | MOTOR ½ HP II |
| 18 | 4405010487 | O' RING | 28 | * 65558R0475 | MOTOR ½ HP III |
| 19 | 4405010982 | MECHANICAL SEAL PLATE | 28 | * 65560R0475 | MOTOR 3/4 HP II |
| 20 | * 4405010604 | FRONT MOTOR FLANGE | 28 | * 65561R0475 | MOTOR 3/4 HP III |
| 20 | * 4405010607 | FRONT MOTOR FLANGE | 28 | * 65562R0475 | MOTOR 1 HP II |
| 20 | * 4405010608 | FRONT MOTOR FLANGE | 28 | * 65563R0475 | MOTOR 1 HP III |
| 21 | * 4405010609 | MOTOR BEARINGS < 1 HP | 28 | * 65564R0475 | MOTOR 1,5 HP II |
| 21 | * 4405010610 | MOTOR BEARINGS 1,5 - 3 HP | 28 | * 65565R0475 | MOTOR 1,5 HP III |
| 21 | * 4405012039 | FRONT & REAR BEARING | 28 | * 65566R0475 | MOTOR 2 HP II |
| 22 | * 4405010612 | MEC. MOTOR COVER C.71 | 28 | * 65567R0475 | MOTOR 2 HP III |
| 22 | * 4405010614 | MEC. MOTOR COVER C.80 | 28 | * 65569R0475 | MOTOR 3 HP II |
| 22 | * 4405010615 | MEC. MOTOR COVER C.90 | 28 | * 65570R0475 | MOTOR 3 HP III |
| 23 | * 4405010144 | MOTOR TIES 0,75 - 1 HP | | | |

CODE **65557H, 65558H, 65560H, 65561H, 65562H, 65563H, 65564H, 65565H, 65566H, 65567H, 65569H, 65570H**

DESCRIPTION: **VICTORIA PLUS SILENT H PUMP**

OBSERVATIONS

| POS | CODE | OBSERVATIONS |
|-----|--------------|---|
| 6 | * 4405010106 | FOR: 65557H, 65558H, 65560H, 65561H, 65562H, 65563H |
| 6 | * 4405010107 | FOR: 65564H, 65565H, 65566H, 65567H, 65569H, 65570H |
| 7 | * 4405010717 | FOR: 65569H, 65570H |
| 10 | * 4405010588 | FOR: 65557H, 65558H, 65560H, 65561H, 65562H, 65563H |
| 10 | * 4405010492 | FOR: 65564H, 65565H, 65566H, 65567H, 65570H |
| 10 | * 4405010589 | FOR: 65569H |
| 11 | * 4405010112 | FOR: 65557H, 65558H, 65560H, 65561H, 65562H, 65563H |
| 11 | * 4405010113 | FOR: 65564H, 65565H, 65566H, 65567H, 65570H |
| 11 | * 4405010180 | FOR: 65569H |
| 14 | * 4405010115 | FOR: 65557H, 65558H, 65560H, 65561H |
| 14 | * 4405010116 | FOR: 65562H, 65563H, 65564H, 65565H, 65566H, 65567H |
| 14 | * 4405010117 | FOR: 65569H, 65570H |
| 15 | * 4405010134 | FOR: 65558H, 65561H, 65563H, 65565H, 65567H, 65570H |
| 16 | * 4405010591 | FOR: 65557H |
| 16 | * 4405010667 | FOR: 65557H 60 HZ |
| 16 | * 4405010592 | FOR: 65558H |
| 16 | * 4405010668 | FOR: 65558H 60 HZ |
| 16 | * 4405010593 | FOR: 65560H |
| 16 | * 4405010669 | FOR: 65560H 60 HZ |
| 16 | * 4405010594 | FOR: 65561H |
| 16 | * 4405010670 | FOR: 65561H 60 HZ |
| 16 | * 4405010595 | FOR: 65562H |
| 16 | * 4405010671 | FOR: 65562H 60 HZ |
| 16 | * 4405010596 | FOR: 65563H |
| 16 | * 4405010672 | FOR: 65563H 60 HZ |
| 16 | * 4405010597 | FOR: 65564H |
| 16 | * 4405010673 | FOR: 65564H 60 HZ |
| 16 | * 4405010598 | FOR: 65565H |
| 16 | * 4405010674 | FOR: 65565H 60 HZ |
| 16 | * 4405010599 | FOR: 65566H |
| 16 | * 4405010675 | FOR: 65566H 60 HZ |
| 16 | * 4405010600 | FOR: 65567H |
| 16 | * 4405010676 | FOR: 65567H 60 HZ |
| 16 | * 4405010601 | FOR: 65569H |
| 16 | * 4405010677 | FOR: 65569H 60 HZ |
| 16 | * 4405010602 | FOR: 65570H |
| 16 | * 4405010678 | FOR: 65570H 60 HZ |
| 20 | * 4405010604 | FOR: 65557H, 65558H, 65560H, 65561H, 65562H, 65563H |
| 20 | * 4405010607 | FOR: 65564H, 65565H, 65566H, 65567H, 65570H |
| 20 | * 4405010608 | FOR: 65569H |
| 21 | * 4405010609 | FOR: 65557H, 65558H, 65560H, 65561H, 65562H, 65563H |
| 21 | * 4405010610 | FOR: 65564H, 65565H, 65566H, 65567H, 65570H |
| 21 | * 4405012039 | FOR: 65569H |

* SEE OBSERVATIONS SHEET

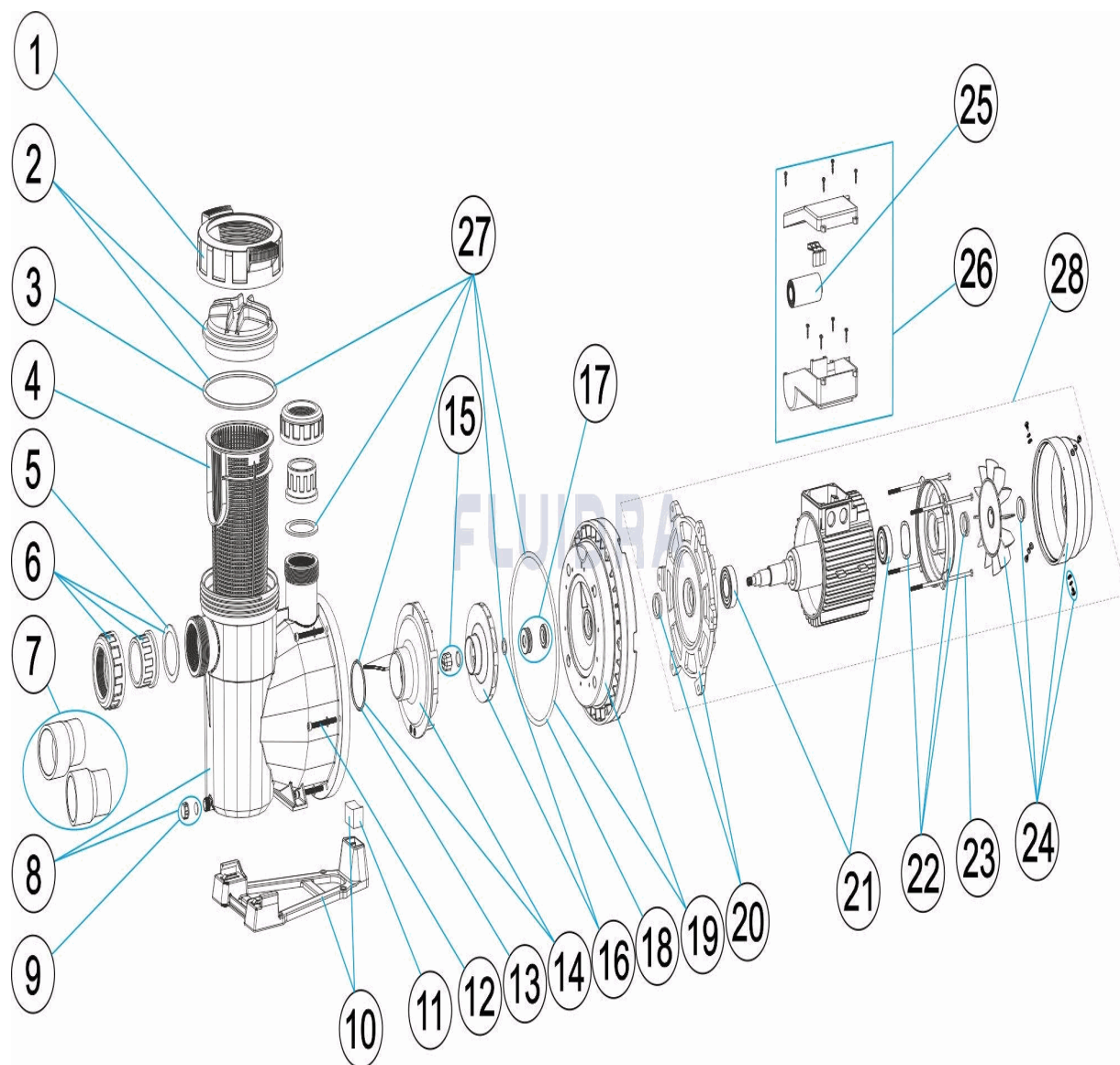
CODE **65557H, 65558H, 65560H, 65561H, 65562H, 65563H, 65564H, 65565H,
65566H, 65567H, 65569H, 65570H**

DESCRIPTION: **VICTORIA PLUS SILENT H PUMP**

| | | |
|----|--------------|---|
| 22 | * 4405010612 | FOR: 65557H, 65558H, 65560H, 65561H, 65562H, 65563H |
| 22 | * 4405010614 | FOR: 65564H, 65565H, 65566H, 65567H, 65570H |
| 22 | * 4405010615 | FOR: 65569H |
| 23 | * 4405010144 | FOR: 65557H, 65558H, 65560H, 65561H, 65562H, 65563H |
| 23 | * 4405010145 | FOR: 65564H, 65565H, 65566H, 65567H, 65570H |
| 23 | * 4405010169 | FOR: 65569H |
| 24 | * 4405010635 | FOR: 65557H, 65558H, 65560H, 65561H, 65562H, 65563H |
| 24 | * 4405010636 | FOR: 65564H, 65565H, 65566H, 65567H, 65570H |
| 24 | * 4405010637 | FOR: 65569H |
| 25 | * 4405010149 | FOR: 65557H |
| 25 | * 4405020121 | FOR: 65560H |
| 25 | * 4405020122 | FOR: 65562H |
| 25 | * 4405010150 | FOR: 65564H |
| 25 | * 4405010174 | FOR: 65566H |
| 25 | * 4405010175 | FOR: 65569H |
| 26 | * 4405010983 | FOR: 65557H, 65560H, 65562H |
| 26 | * 4405010984 | FOR: 65564H, 65566H, 65569H |
| 26 | * 4405010985 | FOR: 65558H, 65561H, 65563H |
| 26 | * 4405010986 | FOR: 65565H, 65567H, 65570H |
| 28 | * 65557R0475 | FOR: 65557H |
| 28 | * 65558R0475 | FOR: 65558H |
| 28 | * 65560R0475 | FOR: 65560H |
| 28 | * 65561R0475 | FOR: 65561H |
| 28 | * 65562R0475 | FOR: 65562H |
| 28 | * 65563R0475 | FOR: 65563H |
| 28 | * 65564R0475 | FOR: 65564H |
| 28 | * 65565R0475 | FOR: 65565H |
| 28 | * 65566R0475 | FOR: 65566H |
| 28 | * 65567R0475 | FOR: 65567H |
| 28 | * 65569R0475 | FOR: 65569H |
| 28 | * 65570R0475 | FOR: 65570H |

CODICE **65557H, 65558H, 65560H, 65561H, 65562H, 65563H, 65564H, 65565H, 65566H, 65567H, 65569H, 65570H**

DESCRIZIONE: **POMPA VICTORIA PLUS SILENT H**


ITALIANO

| POS | CODICE | DESCRIZIONE | QUANTITA' | POS | CODICE | DESCRIZIONE | QUANTITA' |
|-----|--------------|-------------------------------------|-----------|-----|--------------|-----------------------------------|-----------|
| 1 | 4405010585 | VITE COPERCHIO PREFILTRO | | 11 | * 4405010180 | UNIONS PARTE IDRAULICA-BASE POMPA | |
| 2 | 4405010702 | COPERCHIO PREFILTRO | | 12 | 4405010590 | VITE FISSAGGIO CORPO | |
| 3 | 4405010178 | O-RING D 151,7X6,99 | | 13 | 4405010161 | O-RING D 56,7X3,5 | |
| 4 | 4405010105 | CESTO PREFILTRO | | 14 | * 4405010115 | DIFFUSORE <= 0,75 HP | |
| 5 | 4405010179 | GUERNICIONE PIANA 72X55X2,5 | | 14 | * 4405010116 | DIFFUSORE 1 HP - 2 HP | |
| 6 | * 4405010106 | MANICOTTI DI UNIONE <= 1 HP | | 14 | * 4405010117 | DIFFUSORE 2,5 - 3 HP | |
| 6 | * 4405010107 | MANICOTTI DI UNIONE 1,5 HP - 2,5 HP | | 15 | * 4405010134 | TAPPO RUOTA M8 SIN. | |
| 7 | * 4405010717 | MANICOTTI DI UNIONE 3 HP | | 16 | * 4405010591 | RUOTA ½ (II) HP | |
| 8 | 4405010586 | CORPO POMPA | | 16 | * 4405010667 | RUOTA ½ (II) HP 60 HZ | |
| 9 | 4405010587 | TAPPO SCARICO | | 16 | * 4405010592 | RUOTA ½ (III) HP | |
| 10 | * 4405010588 | BASAMENTO POMPA | | 16 | * 4405010668 | RUOTA ½ (III) HP 60 HZ | |
| 10 | * 4405010492 | BASAMENTO POMPA | | 16 | * 4405010593 | RUOTA ¾ (II) HP | |

* SI FACCIA RIFERIMENTO AL FOGLIO DELLE OSSERVAZIONI

CODICE **65557H, 65558H, 65560H, 65561H, 65562H, 65563H, 65564H, 65565H, 65566H, 65567H, 65569H, 65570H**

DESCRIZIONE: POMPA VICTORIA PLUS SILENT H

| | | | | | |
|----|--------------|-------------------------------------|----|--------------|--|
| 10 | * 4405010589 | BASAMENTO POMPA | 16 | * 4405010669 | RUOTA ¼ (II) HP 60 HZ |
| 11 | * 4405010112 | UNIONE PARTE IDRAULICA-BASE 0,75 - | 16 | * 4405010594 | RUOTA ¼ (III) HP |
| 11 | * 4405010113 | UNIONE PARTE IDRAULICA-BASE 1,5 HP | 16 | * 4405010670 | RUOTA ¼ (III) HP 60 HZ |
| 16 | * 4405010595 | RUOTA 1 (II) HP | 23 | * 4405010145 | ASTAS MOTORE 1,5 - 3 HP III |
| 16 | * 4405010671 | RUOTA 1 (II) HP 60 HZ | 23 | * 4405010169 | ASTAS MOTORE (90) 3 HP II |
| 16 | * 4405010596 | RUOTA 1 (III) HP | 24 | * 4405010635 | KIT VENTOLA-COPRIVENTOLA |
| 16 | * 4405010672 | RUOTA 1 (III) HP 60 HZ | 24 | * 4405010636 | KIT VENTOLA-COPRIVENTOLA |
| 16 | * 4405010597 | RUOTA 1,5 (II) HP | 24 | * 4405010637 | KIT VENTOLA-COPRIVENTOLA |
| 16 | * 4405010673 | RUOTA 1,5 (II) HP 60 HZ | 25 | * 4405010149 | CONDENSATORE 12 UF 1/2 CV |
| 16 | * 4405010598 | RUOTA 1,5 (III) HP | 25 | * 4405020121 | CONDENSATORE 14 UF 3/4 CV |
| 16 | * 4405010674 | RUOTA 1,5 (III) HP 60 HZ | 25 | * 4405020122 | CONDENSATORE 16 UF 1 CV |
| 16 | * 4405010599 | RUOTA 2 (II) HP | 25 | * 4405010150 | CONDENSATORE 18 UF 1,5 CV |
| 16 | * 4405010675 | RUOTA 2 (II) HP 60 HZ | 25 | * 4405010174 | CONDENSATORE 32 ?F 2 CV |
| 16 | * 4405010600 | RUOTA 2 (III) HP | 25 | * 4405010175 | CONDENSATORE 40 ?F 2,5-3 CV |
| 16 | * 4405010676 | RUOTA 2 (III) HP 60 HZ | 26 | * 4405010983 | GRUPPO MORSETTIERA C. 63-71 II |
| 16 | * 4405010601 | RUOTA 3 (II) HP | 26 | * 4405010984 | SET CASSETTA TERMINALI (MOTORE II) C.ì |
| 16 | * 4405010677 | RUOTA 3 (II) HP 60 HZ | 26 | * 4405010985 | COPERCHIO MORSETTIERA C 63-71 III |
| 16 | * 4405010602 | RUOTA 3 (III) HP | 26 | * 4405010986 | SET CASSETTA TERMINALI (MOTORE III) C. |
| 16 | * 4405010678 | RUOTA 3 (III) HP 60 HZ | 27 | 4405010860 | GUARNIZIONI |
| 17 | 4405010987 | GUARNIZIONE MECCANICA | 28 | * 65557R0475 | MOTOR ½ HP II |
| 18 | 4405010487 | O-RING | 28 | * 65558R0475 | MOTOR ½ HP III |
| 19 | 4405010982 | FLANGIA TENUTA MECCANICA | 28 | * 65560R0475 | MOTOR 3/4 HP II |
| 20 | * 4405010604 | FASCETTA MOTORE ANTERIORE | 28 | * 65561R0475 | MOTOR 3/4 HP III |
| 20 | * 4405010607 | FASCETTA MOTORE ANTERIORE | 28 | * 65562R0475 | MOTOR 1 HP II |
| 20 | * 4405010608 | FASCETTA MOTORE ANTERIORE | 28 | * 65563R0475 | MOTOR 1 HP III |
| 21 | * 4405010609 | CUSCINETTO MOTORE < 1 HP | 28 | * 65564R0475 | MOTOR 1,5 HP II |
| 21 | * 4405010610 | CUSCINETTO MOTORE 1,5 - 3 HP | 28 | * 65565R0475 | MOTOR 1,5 HP III |
| 21 | * 4405012039 | CUSCINETTO ANTERIORE & POSTERIORE | 28 | * 65566R0475 | MOTOR 2 HP II |
| 22 | * 4405010612 | COPERCHIO MOTORE MEC. C.71 C/CASSII | 28 | * 65567R0475 | MOTOR 2 HP III |
| 22 | * 4405010614 | COPERCHIO MOTORE MEC. C.80 C/CASSII | 28 | * 65569R0475 | MOTOR 3 HP II |
| 22 | * 4405010615 | COPERCHIO MOTORE MEC. C.90 C/CASSII | 28 | * 65570R0475 | MOTOR 3 HP III |
| 23 | * 4405010144 | ASTAS MOTORE 0,75 - 1 HP | | | |

CODICE **65557H, 65558H, 65560H, 65561H, 65562H, 65563H, 65564H, 65565H, 65566H, 65567H, 65569H, 65570H**

DESCRIZIONE: POMPA VICTORIA PLUS SILENT H

OSSERVAZIONI

| POS | CODICE | OSSERVAZIONI |
|-----|--------------|---|
| 6 | * 4405010106 | PER: 65557H, 65558H, 65560H, 65561H, 65562H, 65563H |
| 6 | * 4405010107 | PER: 65564H, 65565H, 65566H, 65567H, 65569H, 65570H |
| 7 | * 4405010717 | PER: 65569H, 65570H |
| 10 | * 4405010588 | PER: 65557H, 65558H, 65560H, 65561H, 65562H, 65563H |
| 10 | * 4405010492 | PER: 65564H, 65565H, 65566H, 65567H, 65570H |
| 10 | * 4405010589 | PER: 65569H |
| 11 | * 4405010112 | PER: 65557H, 65558H, 65560H, 65561H, 65562H, 65563H |
| 11 | * 4405010113 | PER: 65564H, 65565H, 65566H, 65567H, 65570H |
| 11 | * 4405010180 | PER: 65569H |
| 14 | * 4405010115 | PER: 65557H, 65558H, 65560H, 65561H |
| 14 | * 4405010116 | PER: 65562H, 65563H, 65564H, 65565H, 65566H, 65567H |
| 14 | * 4405010117 | PER: 65569H, 65570H |
| 15 | * 4405010134 | PER: 65558H, 65561H, 65563H, 65565H, 65567H, 65570H |
| 16 | * 4405010591 | PER: 65557H |
| 16 | * 4405010667 | PER: 65557H 60 HZ |
| 16 | * 4405010592 | PER: 65558H |
| 16 | * 4405010668 | PER: 65558H 60 HZ |
| 16 | * 4405010593 | PER: 65560H |
| 16 | * 4405010669 | PER: 65560H 60 HZ |
| 16 | * 4405010594 | PER: 65561H |
| 16 | * 4405010670 | PER: 65561H 60 HZ |
| 16 | * 4405010595 | PER: 65562H |
| 16 | * 4405010671 | PER: 65562H 60 HZ |
| 16 | * 4405010596 | PER: 65563H |
| 16 | * 4405010672 | PER: 65563H 60 HZ |
| 16 | * 4405010597 | PER: 65564H |
| 16 | * 4405010673 | PER: 65564H 60 HZ |
| 16 | * 4405010598 | PER: 65565H |
| 16 | * 4405010674 | PER: 65565H 60 HZ |
| 16 | * 4405010599 | PER: 65566H |
| 16 | * 4405010675 | PER: 65566H 60 HZ |
| 16 | * 4405010600 | PER: 65567H |
| 16 | * 4405010676 | PER: 65567H 60 HZ |
| 16 | * 4405010601 | PER: 65569H |
| 16 | * 4405010677 | PER: 65569H 60 HZ |
| 16 | * 4405010602 | PER: 65570H |
| 16 | * 4405010678 | PER: 65570H 60 HZ |
| 20 | * 4405010604 | PER: 65557H, 65558H, 65560H, 65561H, 65562H, 65563H |
| 20 | * 4405010607 | PER: 65564H, 65565H, 65566H, 65567H, 65570H |
| 20 | * 4405010608 | PER: 65569H |
| 21 | * 4405010609 | PER: 65557H, 65558H, 65560H, 65561H, 65562H, 65563H |
| 21 | * 4405010610 | PER: 65564H, 65565H, 65566H, 65567H, 65570H |
| 21 | * 4405012039 | PER: 65569H |

*** SI FACCIA RIFERIMENTO AL FOGLIO DELLE OSSERVAZIONI**

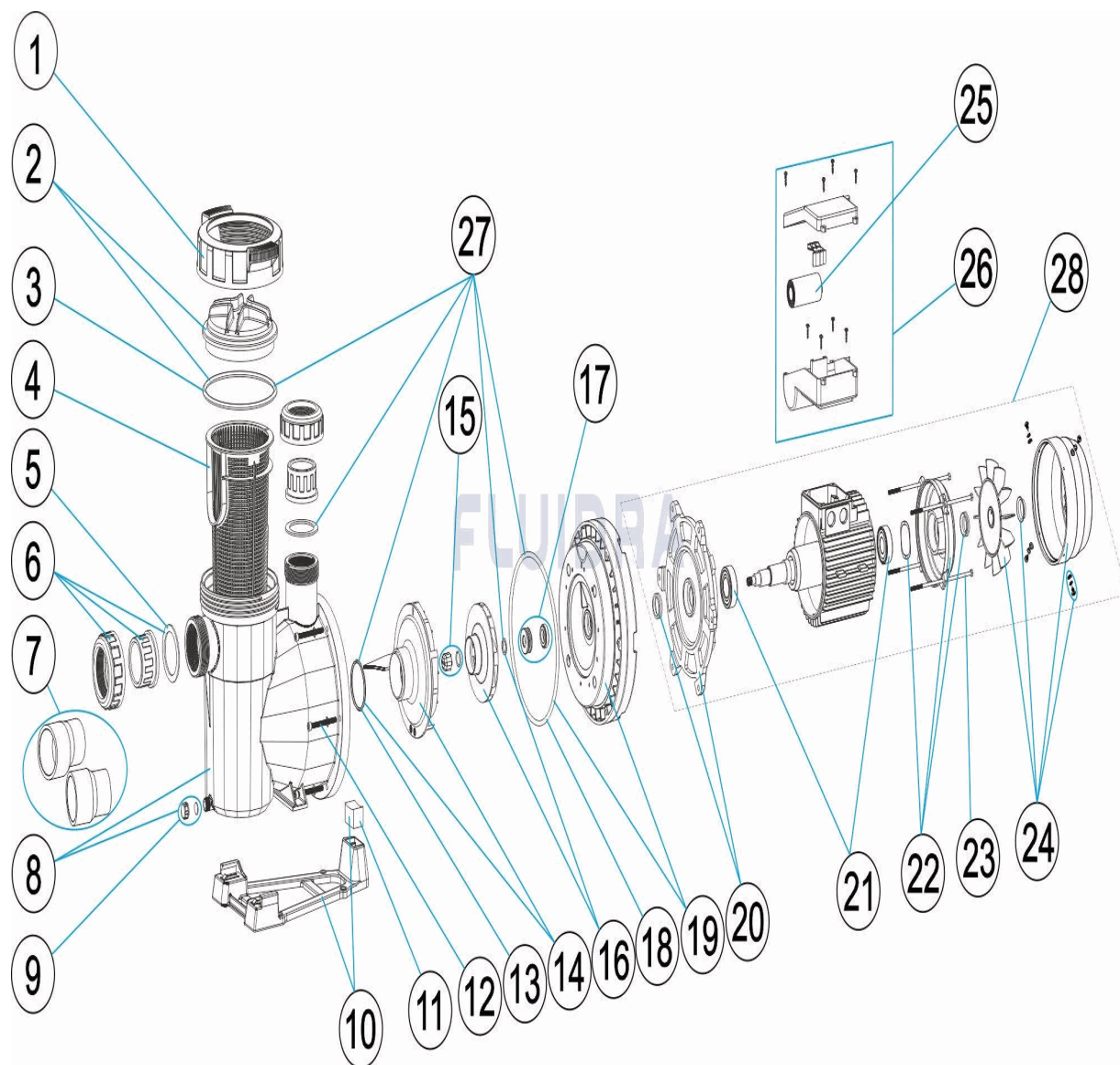
CODICE **65557H, 65558H, 65560H, 65561H, 65562H, 65563H, 65564H, 65565H, 65566H, 65567H, 65569H, 65570H**

DESCRIZIONE: POMPA VICTORIA PLUS SILENT H

| | | |
|----|--------------|---|
| 22 | * 4405010612 | PER: 65557H, 65558H, 65560H, 65561H, 65562H, 65563H |
| 22 | * 4405010614 | PER: 65564H, 65565H, 65566H, 65567H, 65570H |
| 22 | * 4405010615 | PER: 65569H |
| 23 | * 4405010144 | PER: 65557H, 65558H, 65560H, 65561H, 65562H, 65563H |
| 23 | * 4405010145 | PER: 65564H, 65565H, 65566H, 65567H, 65570H |
| 23 | * 4405010169 | PER: 65569H |
| 24 | * 4405010635 | PER: 65557H, 65558H, 65560H, 65561H, 65562H, 65563H |
| 24 | * 4405010636 | PER: 65564H, 65565H, 65566H, 65567H, 65570H |
| 24 | * 4405010637 | PER: 65569H |
| 25 | * 4405010149 | PER: 65557H |
| 25 | * 4405020121 | PER: 65560H |
| 25 | * 4405020122 | PER: 65562H |
| 25 | * 4405010150 | PER: 65564H |
| 25 | * 4405010174 | PER: 65566H |
| 25 | * 4405010175 | PER: 65569H |
| 26 | * 4405010983 | PER: 65557H, 65560H, 65562H |
| 26 | * 4405010984 | PER: 65564H, 65566H, 65569H |
| 26 | * 4405010985 | PER: 65558H, 65561H, 65563H |
| 26 | * 4405010986 | PER: 65565H, 65567H, 65570H |
| 28 | * 65557R0475 | PER: 65557H |
| 28 | * 65558R0475 | PER: 65558H |
| 28 | * 65560R0475 | PER: 65560H |
| 28 | * 65561R0475 | PER: 65561H |
| 28 | * 65562R0475 | PER: 65562H |
| 28 | * 65563R0475 | PER: 65563H |
| 28 | * 65564R0475 | PER: 65564H |
| 28 | * 65565R0475 | PER: 65565H |
| 28 | * 65566R0475 | PER: 65566H |
| 28 | * 65567R0475 | PER: 65567H |
| 28 | * 65569R0475 | PER: 65569H |
| 28 | * 65570R0475 | PER: 65570H |

CODE **65557H, 65558H, 65560H, 65561H, 65562H, 65563H, 65564H, 65565H, 65566H, 65567H, 65569H, 65570H**

BESCHREIBUNG: **PUMPE VICTORIA PLUS SILENT H**


DEUTSCH

| POS | CODE | BESCHREIBUNG | MENGE | POS | CODE | BESCHREIBUNG | MENGE |
|-----|--------------|----------------------------------|-------|-----|--------------|-----------------------------------|-------|
| 1 | 4405010585 | MUTTER VORFILTERDECKEL | | 11 | * 4405010180 | VERBINDUNG HYDRAULIK-FUSS 3 HP II | |
| 2 | 4405010702 | VORFILTERDECKEL | | 12 | 4405010590 | FIXIERSCHRAUBE GEHÄUSE | |
| 3 | 4405010178 | O-RING D. 151,7 X 6,99 | | 13 | 4405010161 | O-RING D. 56,7 X 3,5 | |
| 4 | 4405010105 | VORFILTERKORB | | 14 | * 4405010115 | WASSERVERTEILER <=0,75 HP | |
| 5 | 4405010179 | FLACHDICHTUNG 72 X 55 X 2,5 | | 14 | * 4405010116 | WASSERVERTEILER 1 HP - 2 HP | |
| 6 | * 4405010106 | ANSCHLUSSZUBEHÖR <= 1 HP | | 14 | * 4405010117 | WASSERVERTEILER 2,5 - 3 HP | |
| 6 | * 4405010107 | ANSCHLUSSZUBEHÖR 1,5 HP - 2,5 HP | | 15 | * 4405010134 | STOPFEN LAUFRAD M8 LINKS | |
| 7 | * 4405010717 | ANSCHLUSSZUBEHÖR 3 HP | | 16 | * 4405010591 | LAUFRAD ½ (II) HP | |
| 8 | 4405010586 | PUMPENGEHÄUSE | | 16 | * 4405010667 | LAUFRAD ½ (II) HP 60 HZ | |
| 9 | 4405010587 | ABLASSSTOPFEN | | 16 | * 4405010592 | LAUFRAD ½ (III) HP | |
| 10 | * 4405010588 | PUMPENFUSS | | 16 | * 4405010668 | LAUFRAD ½ (III) HP 60 HZ | |
| 10 | * 4405010492 | PUMPENFUSS | | 16 | * 4405010593 | LAUFRAD ¾ (II) HP | |

* SIEHE ANMERKUNGSBLATT

CODE **65557H, 65558H, 65560H, 65561H, 65562H, 65563H, 65564H, 65565H, 65566H, 65567H, 65569H, 65570H**

BESCHREIBUNG: PUMPE VICTORIA PLUS SILENT H

| | | | | | |
|----|--------------|--------------------------------------|----|--------------|-----------------------------------|
| 10 | * 4405010589 | PUMPENFUSS | 16 | * 4405010669 | LAUFRAD ¾ (II) HP 60 HZ |
| 11 | * 4405010112 | VERBINDUNG HYDRAULIK-FUSS 0,75 - 1,5 | 16 | * 4405010594 | LAUFRAD ¾ (III) HP |
| 11 | * 4405010113 | VERBINDUNG HYDRAULIK-FUSS 1,5 HP - 3 | 16 | * 4405010670 | LAUFRAD ¾ (III) HP 60 HZ |
| 16 | * 4405010595 | LAUFRAD 1 (II) HP | 23 | * 4405010145 | RUNDEISEN MOTOR 1,5 - 3 HP III |
| 16 | * 4405010671 | LAUFRAD 1 (II) HP 60 HZ | 23 | * 4405010169 | RUNDEISEN MOTOR (90) 3 HP II |
| 16 | * 4405010596 | LAUFRAD 1 (III) HP | 24 | * 4405010635 | SET VENTILATOR - ABDECKUNG |
| 16 | * 4405010672 | LAUFRAD 1 (III) HP 60 HZ | 24 | * 4405010636 | SET VENTILATOR - ABDECKUNG |
| 16 | * 4405010597 | LAUFRAD 1,5 (II) HP | 24 | * 4405010637 | SET VENTILATOR - ABDECKUNG |
| 16 | * 4405010673 | LAUFRAD 1,5 (II) HP 60 HZ | 25 | * 4405010149 | KONDENSATOR 12 UF 1/2 CV |
| 16 | * 4405010598 | LAUFRAD 1,5 (III) HP | 25 | * 4405020121 | KONDENSATOR 14 UF 3/4 CV |
| 16 | * 4405010674 | LAUFRAD 1,5 (III) HP 60 HZ | 25 | * 4405020122 | KONDENSATOR 16 UF 1 CV |
| 16 | * 4405010599 | LAUFRAD 2 (II) HP | 25 | * 4405010150 | KONDENSATOR 18 UF 1,5 CV |
| 16 | * 4405010675 | LAUFRAD 2 (II) HP 60 HZ | 25 | * 4405010174 | KONDENSATOR 32 UF 2 CV |
| 16 | * 4405010600 | LAUFRAD 2 (III) HP | 25 | * 4405010175 | KONDENSATOR 40 UF 2,5 - 3 CV |
| 16 | * 4405010676 | LAUFRAD 2 (III) HP 60 HZ | 26 | * 4405010983 | SET KLEMMSCHRANK C. 63 - 71 II |
| 16 | * 4405010601 | LAUFRAD 3 (II) HP | 26 | * 4405010984 | SET KLEMMSCHRANK (MOTOR II) C.80 |
| 16 | * 4405010677 | LAUFRAD 3 (II) HP 60 HZ | 26 | * 4405010985 | SET KLEMMSCHRANK C.63 - 71 III |
| 16 | * 4405010602 | LAUFRAD 3 (III) HP | 26 | * 4405010986 | SET KLEMMSCHRANK (MOTOR III) C.80 |
| 16 | * 4405010678 | LAUFRAD 3 (III) HP 60 HZ | 27 | 4405010860 | GUMMIDICHTUNGEN |
| 17 | 4405010987 | GLEITRINGDICHTUNG | 28 | * 65557R0475 | MOTOR ½ HP II |
| 18 | 4405010487 | O-RING | 28 | * 65558R0475 | MOTOR ½ HP III |
| 19 | 4405010982 | GLEITRINGDICHTUNG | 28 | * 65560R0475 | MOTOR 3/4 HP II |
| 20 | * 4405010604 | VORDERER MOTORFLANSCH | 28 | * 65561R0475 | MOTOR 3/4 HP III |
| 20 | * 4405010607 | VORDERER MOTORFLANSCH | 28 | * 65562R0475 | MOTOR 1 HP II |
| 20 | * 4405010608 | VORDERER MOTORFLANSCH | 28 | * 65563R0475 | MOTOR 1 HP III |
| 21 | * 4405010609 | WÄLZLAGER MOTOR < 1 HP | 28 | * 65564R0475 | MOTOR 1,5 HP II |
| 21 | * 4405010610 | WÄLZLAGER MOTOR 1,5 - 3 HP | 28 | * 65565R0475 | MOTOR 1,5 HP III |
| 21 | * 4405012039 | VORDERES WÄLZLAGER | 28 | * 65566R0475 | MOTOR 2 HP II |
| 22 | * 4405010612 | MOTORDECKEL MECH. C.71 MIT RINGLAG | 28 | * 65567R0475 | MOTOR 2 HP III |
| 22 | * 4405010614 | MOTORDECKEL MECH. C.80 MIT RINGLAG | 28 | * 65569R0475 | MOTOR 3 HP II |
| 22 | * 4405010615 | MOTORDECKEL MECH. C.90 MIT RINGLAG | 28 | * 65570R0475 | MOTOR 3 HP III |
| 23 | * 4405010144 | RUNDEISEN MOTOR 0,75 - 1 HP | | | |

CODE **65557H, 65558H, 65560H, 65561H, 65562H, 65563H, 65564H, 65565H, 65566H, 65567H, 65569H, 65570H**

BESCHREIBUNG: **PUMPE VICTORIA PLUS SILENT H**

HINWEISE

| POS | CODE | HINWEISE |
|-----|--------------|---|
| 6 | * 4405010106 | FÜR: 65557H, 65558H, 65560H, 65561H, 65562H, 65563H |
| 6 | * 4405010107 | FÜR: 65564H, 65565H, 65566H, 65567H, 65569H, 65570H |
| 7 | * 4405010717 | FÜR: 65569H, 65570H |
| 10 | * 4405010588 | FÜR: 65557H, 65558H, 65560H, 65561H, 65562H, 65563H |
| 10 | * 4405010492 | FÜR: 65564H, 65565H, 65566H, 65567H, 65570H |
| 10 | * 4405010589 | FÜR: 65569H |
| 11 | * 4405010112 | FÜR: 65557H, 65558H, 65560H, 65561H, 65562H, 65563H |
| 11 | * 4405010113 | FÜR: 65564H, 65565H, 65566H, 65567H, 65570H |
| 11 | * 4405010180 | FÜR: 65569H |
| 14 | * 4405010115 | FÜR: 65557H, 65558H, 65560H, 65561H |
| 14 | * 4405010116 | FÜR: 65562H, 65563H, 65564H, 65565H, 65566H, 65567H |
| 14 | * 4405010117 | FÜR: 65569H, 65570H |
| 15 | * 4405010134 | FÜR: 65558H, 65561H, 65563H, 65565H, 65567H, 65570H |
| 16 | * 4405010591 | FÜR: 65557H |
| 16 | * 4405010667 | FÜR: 65557H 60 HZ |
| 16 | * 4405010592 | FÜR: 65558H |
| 16 | * 4405010668 | FÜR: 65558H 60 HZ |
| 16 | * 4405010593 | FÜR: 65560H |
| 16 | * 4405010669 | FÜR: 65560H 60 HZ |
| 16 | * 4405010594 | FÜR: 65561H |
| 16 | * 4405010670 | FÜR: 65561H 60 HZ |
| 16 | * 4405010595 | FÜR: 65562H |
| 16 | * 4405010671 | FÜR: 65562H 60 HZ |
| 16 | * 4405010596 | FÜR: 65563H |
| 16 | * 4405010672 | FÜR: 65563H 60 HZ |
| 16 | * 4405010597 | FÜR: 65564H |
| 16 | * 4405010673 | FÜR: 65564H 60 HZ |
| 16 | * 4405010598 | FÜR: 65565H |
| 16 | * 4405010674 | FÜR: 65565H 60 HZ |
| 16 | * 4405010599 | FÜR: 65566H |
| 16 | * 4405010675 | FÜR: 65566H 60 HZ |
| 16 | * 4405010600 | FÜR: 65567H |
| 16 | * 4405010676 | FÜR: 65567H 60 HZ |
| 16 | * 4405010601 | FÜR: 65569H |
| 16 | * 4405010677 | FÜR: 65569H 60 HZ |
| 16 | * 4405010602 | FÜR: 65570H |
| 16 | * 4405010678 | FÜR: 65570H 60 HZ |
| 20 | * 4405010604 | FÜR: 65557H, 65558H, 65560H, 65561H, 65562H, 65563H |
| 20 | * 4405010607 | FÜR: 65564H, 65565H, 65566H, 65567H, 65570H |
| 20 | * 4405010608 | FÜR: 65569H |
| 21 | * 4405010609 | FÜR: 65557H, 65558H, 65560H, 65561H, 65562H, 65563H |
| 21 | * 4405010610 | FÜR: 65564H, 65565H, 65566H, 65567H, 65570H |
| 21 | * 4405012039 | FÜR: 65569H |

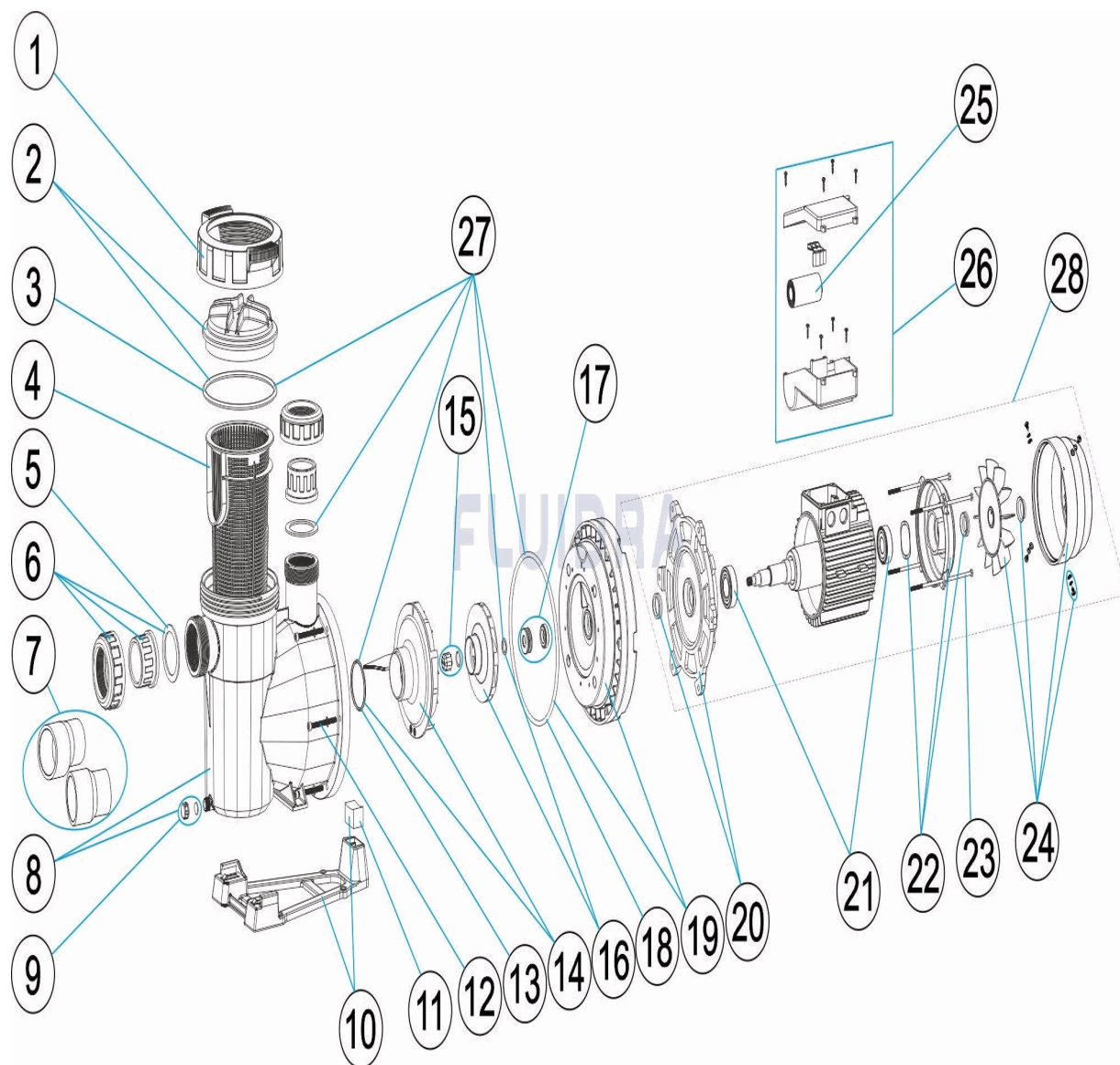
CODE **65557H, 65558H, 65560H, 65561H, 65562H, 65563H, 65564H, 65565H, 65566H, 65567H, 65569H, 65570H**

BESCHREIBUNG: PUMPE VICTORIA PLUS SILENT H

| | | |
|----|--------------|---|
| 22 | * 4405010612 | FÜR: 65557H, 65558H, 65560H, 65561H, 65562H, 65563H |
| 22 | * 4405010614 | FÜR: 65564H, 65565H, 65566H, 65567H, 65570H |
| 22 | * 4405010615 | FÜR: 65569H |
| 23 | * 4405010144 | FÜR: 65557H, 65558H, 65560H, 65561H, 65562H, 65563H |
| 23 | * 4405010145 | FÜR: 65564H, 65565H, 65566H, 65567H, 65570H |
| 23 | * 4405010169 | FÜR: 65569H |
| 24 | * 4405010635 | FÜR: 65557H, 65558H, 65560H, 65561H, 65562H, 65563H |
| 24 | * 4405010636 | FÜR: 65564H, 65565H, 65566H, 65567H, 65570H |
| 24 | * 4405010637 | FÜR: 65569H |
| 25 | * 4405010149 | FÜR: 65557H |
| 25 | * 4405020121 | FÜR: 65560H |
| 25 | * 4405020122 | FÜR: 65562H |
| 25 | * 4405010150 | FÜR: 65564H |
| 25 | * 4405010174 | FÜR: 65566H |
| 25 | * 4405010175 | FÜR: 65569H |
| 26 | * 4405010983 | FÜR: 65557H, 65560H, 65562H |
| 26 | * 4405010984 | FÜR: 65564H, 65566H, 65569H |
| 26 | * 4405010985 | FÜR: 65558H, 65561H, 65563H |
| 26 | * 4405010986 | FÜR: 65565H, 65567H, 65570H |
| 28 | * 65557R0475 | FÜR: 65557H |
| 28 | * 65558R0475 | FÜR: 65558H |
| 28 | * 65560R0475 | FÜR: 65560H |
| 28 | * 65561R0475 | FÜR: 65561H |
| 28 | * 65562R0475 | FÜR: 65562H |
| 28 | * 65563R0475 | FÜR: 65563H |
| 28 | * 65564R0475 | FÜR: 65564H |
| 28 | * 65565R0475 | FÜR: 65565H |
| 28 | * 65566R0475 | FÜR: 65566H |
| 28 | * 65567R0475 | FÜR: 65567H |
| 28 | * 65569R0475 | FÜR: 65569H |
| 28 | * 65570R0475 | FÜR: 65570H |

CODIGO **65557H, 65558H, 65560H, 65561H, 65562H, 65563H, 65564H, 65565H, 65566H, 65567H, 65569H, 65570H**

DESCRIÇÃO: **BOMBA VICTORIA PLUS SILENT H**



PORTUGUES

| POS | CODIGO | DESCRIÇÃO | JANTIDADE | POS | CODIGO | DESCRIÇÃO | JANTIDADE |
|-----|--------------|-------------------------------------|-----------|-----|--------------|------------------------------|-----------|
| 1 | 4405010585 | PORCA TAMPA PRÉ-FILTRO | | 11 | * 4405010180 | UNIÃO HIDRÁULICA PIE 3 HP II | |
| 2 | 4405010702 | TAMPA PRÉ-FILTRO | | 12 | 4405010590 | PARAFUSO M6X65 DIN 912 | |
| 3 | 4405010178 | JUNTA TÓRICA D 151,7X6,99 | | 13 | 4405010161 | JUNTA TÓRICA D 56,7X3,5 | |
| 4 | 4405010105 | CESTO PRÉ-FILTRO | | 14 | * 4405010115 | DIFUSOR <=0,75 HP | |
| 5 | 4405010179 | JUNTA PLANA 72X55X2,5 | | 14 | * 4405010116 | DIFUSOR 1 HP - 2 HP | |
| 6 | * 4405010106 | ACESSÓRIOS DE UNIÃO <= 1 HP | | 14 | * 4405010117 | DIFUSOR 2,5 - 3 HP | |
| 6 | * 4405010107 | ACESSÓRIOS DE UNIÃO 1,5 HP - 2,5 HP | | 15 | * 4405010134 | TAMPO RODÍZIO M8 ESQ. | |
| 7 | * 4405010717 | ACESSÓRIOS DE UNIÃO 3 HP | | 16 | * 4405010591 | RODÍZIO ½ (II) HP | |
| 8 | 4405010586 | CORPO BOMBA | | 16 | * 4405010667 | RODÍZIO ½ (II) HP | |
| 9 | 4405010587 | TAMPÃO PURGA | | 16 | * 4405010592 | RODÍZIO ½ (III) HP | |
| 10 | * 4405010588 | PÉ BOMBA | | 16 | * 4405010668 | RODÍZIO ½ (III) HP 60 HZ | |
| 10 | * 4405010492 | PÉ BOMBA | | 16 | * 4405010593 | RODÍZIO ¾ (II) HP | |

*** VEJA A FICHA DE OBSERVAÇÕES**

CODIGO 65557H, 65558H, 65560H, 65561H, 65562H, 65563H, 65564H, 65565H, 65566H, 65567H, 65569H, 65570H

DESCRIÇÃO: BOMBA VICTORIA PLUS SILENT H

| | | | | | |
|----|--------------|-------------------------------------|----|--------------|--|
| 10 | * 4405010589 | PÉ BOMBA | 16 | * 4405010669 | RODÍZIO ¼ (II) HP 60 HZ |
| 11 | * 4405010112 | UNIÃO HIDRÁULICA PIE 0,75 - 1,5 HP | 16 | * 4405010594 | RODÍZIO ¼ (III) HP |
| 11 | * 4405010113 | UNIÃO HIDRÁULICA PIE 1,5 HP - 3 HP | 16 | * 4405010670 | RODÍZIO ¼ (III) HP 60 HZ |
| 16 | * 4405010595 | RODÍZIO 1 (II) HP | 23 | * 4405010145 | VARETAS MOTOR 1,5 - 3 HP III |
| 16 | * 4405010671 | RODÍZIO 1 (II) HP 60 HZ | 23 | * 4405010169 | VARETAS MOTOR (90) 3 HP II |
| 16 | * 4405010596 | RODÍZIO 1 (III) HP | 24 | * 4405010635 | CONJUNTO VENTILLADOR-TAMPA |
| 16 | * 4405010672 | RODÍZIO 1 (III) HP 60 HZ | 24 | * 4405010636 | CONJUNTO VENTILLADOR-TAMPA |
| 16 | * 4405010597 | RODÍZIO 1,5 (II) HP | 24 | * 4405010637 | CONJUNTO VENTILLADOR-TAMPA |
| 16 | * 4405010673 | RODÍZIO 1,5 (II) HP 60 HZ | 25 | * 4405010149 | CONDENSADOR 12 UF 1/2 CV |
| 16 | * 4405010598 | RODÍZIO 1,5 (III) HP | 25 | * 4405020121 | CONDENSADOR 14 UF 3/4 CV |
| 16 | * 4405010674 | RODÍZIO 1,5 (III) HP 60 HZ | 25 | * 4405020122 | CONDENSADOR 16 UF 1 CV |
| 16 | * 4405010599 | RODÍZIO 2 (II) CV | 25 | * 4405010150 | CONDENSADOR 18 UF 1,5 CV |
| 16 | * 4405010675 | RODÍZIO 2 (II) CV 60 HZ | 25 | * 4405010174 | CONDENSADOR 32 ?F 2 CV |
| 16 | * 4405010600 | RODÍZIO 2 (III) HP | 25 | * 4405010175 | CONDENSATEUR 40 ?F 2,5-3 CV |
| 16 | * 4405010676 | RODÍZIO 2 (III) HP 60 HZ | 26 | * 4405010983 | CONJUNTO CAIXA LIGAÇÕES C. 63-71 II |
| 16 | * 4405010601 | RODÍZIO 3 (II) HP | 26 | * 4405010984 | CJTO. CAIXA TERMINAIS (MOTOR II) C.80 |
| 16 | * 4405010677 | RODÍZIO 3 (II) HP 60 HZ | 26 | * 4405010985 | TAMPA CAIXA BORNES C 63-71 III |
| 16 | * 4405010602 | RODÍZIO 3 (III) HP | 26 | * 4405010986 | CJTO. CAIXA TERMINAIS (MOTOR III) C.80 |
| 16 | * 4405010678 | RODÍZIO 3 (III) HP 60 HZ | 27 | 4405010860 | JUNTAS |
| 17 | 4405010987 | JUNTA MECÂNICA | 28 | * 65557R0475 | MOTOR ½ HP II |
| 18 | 4405010487 | JUNTA TÓRICA | 28 | * 65558R0475 | MOTOR ½ HP III |
| 19 | 4405010982 | FLANGE DO SELO MECÂNICO | 28 | * 65560R0475 | MOTOR 3/4 HP II |
| 20 | * 4405010604 | FLANGE MOTOR DIANTEIRA | 28 | * 65561R0475 | MOTOR 3/4 HP III |
| 20 | * 4405010607 | FLANGE MOTOR DIANTEIRA | 28 | * 65562R0475 | MOTOR 1 HP II |
| 20 | * 4405010608 | FLANGE MOTOR DIANTEIRA | 28 | * 65563R0475 | MOTOR 1 HP III |
| 21 | * 4405010609 | ROLAMENTO MOTOR < 1 HP | 28 | * 65564R0475 | MOTOR 1,5 HP II |
| 21 | * 4405010610 | ROLAMENTO MOTOR 1,5 - 3 HP | 28 | * 65565R0475 | MOTOR 1,5 HP III |
| 21 | * 4405012039 | ROLAMENTO DIANTEIRO & TRASEIRO | 28 | * 65566R0475 | MOTOR 2 HP II |
| 22 | * 4405010612 | TAMPA MOTOR MEC. C.71 C/RANHURA D3' | 28 | * 65567R0475 | MOTOR 2 HP III |
| 22 | * 4405010614 | TAMPA MOTOR MEC. C.80 C/RANHURA D4' | 28 | * 65569R0475 | MOTOR 3 HP II |
| 22 | * 4405010615 | TAMPA MOTOR MEC. C.90 C/RANHURA D5' | 28 | * 65570R0475 | MOTOR 3 HP III |
| 23 | * 4405010144 | VARETAS MOTOR 0,75 - 1 HP | | | |

CODIGO **65557H, 65558H, 65560H, 65561H, 65562H, 65563H, 65564H, 65565H, 65566H, 65567H, 65569H, 65570H**

DESCRIÇÃO: BOMBA VICTORIA PLUS SILENT H

OBSERVAÇÕES

| POS | CODIGO | OBSERVAÇÕES |
|-----|--------------|--|
| 6 | * 4405010106 | PARA: 65557H, 65558H, 65560H, 65561H, 65562H, 65563H |
| 6 | * 4405010107 | PARA: 65564H, 65565H, 65566H, 65567H, 65569H, 65570H |
| 7 | * 4405010717 | PARA: 65569H, 65570H |
| 10 | * 4405010588 | PARA: 65557H, 65558H, 65560H, 65561H, 65562H, 65563H |
| 10 | * 4405010492 | PARA: 65564H, 65565H, 65566H, 65567H, 65570H |
| 10 | * 4405010589 | PARA: 65569H |
| 11 | * 4405010112 | PARA: 65557H, 65558H, 65560H, 65561H, 65562H, 65563H |
| 11 | * 4405010113 | PARA: 65564H, 65565H, 65566H, 65567H, 65570H |
| 11 | * 4405010180 | PARA: 65569H |
| 14 | * 4405010115 | PARA: 65557H, 65558H, 65560H, 65561H |
| 14 | * 4405010116 | PARA: 65562H, 65563H, 65564H, 65565H, 65566H, 65567H |
| 14 | * 4405010117 | PARA: 65569H, 65570H |
| 15 | * 4405010134 | PARA: 65558H, 65561H, 65563H, 65565H, 65567H, 65570H |
| 16 | * 4405010591 | PARA: 65557H |
| 16 | * 4405010667 | PARA: 65557H 60 HZ |
| 16 | * 4405010592 | PARA: 65558H |
| 16 | * 4405010668 | PARA: 65558H 60 HZ |
| 16 | * 4405010593 | PARA: 65560H |
| 16 | * 4405010669 | PARA: 65560H 60 HZ |
| 16 | * 4405010594 | PARA: 65561H |
| 16 | * 4405010670 | PARA: 65561H 60 HZ |
| 16 | * 4405010595 | PARA: 65562H |
| 16 | * 4405010671 | PARA: 65562H 60 HZ |
| 16 | * 4405010596 | PARA: 65563H |
| 16 | * 4405010672 | PARA: 65563H 60 HZ |
| 16 | * 4405010597 | PARA: 65564H |
| 16 | * 4405010673 | PARA: 65564H 60 HZ |
| 16 | * 4405010598 | PARA: 65565H |
| 16 | * 4405010674 | PARA: 65565H 60 HZ |
| 16 | * 4405010599 | PARA: 65566H |
| 16 | * 4405010675 | PARA: 65566H 60 HZ |
| 16 | * 4405010600 | PARA: 65567H |
| 16 | * 4405010676 | PARA: 65567H 60 HZ |
| 16 | * 4405010601 | PARA: 65569H |
| 16 | * 4405010677 | PARA: 65569H 60 HZ |
| 16 | * 4405010602 | PARA: 65570H |
| 16 | * 4405010678 | PARA: 65570H 60 HZ |
| 20 | * 4405010604 | PARA: 65557H, 65558H, 65560H, 65561H, 65562H, 65563H |
| 20 | * 4405010607 | PARA: 65564H, 65565H, 65566H, 65567H, 65570H |
| 20 | * 4405010608 | PARA: 65569H |
| 21 | * 4405010609 | PARA: 65557H, 65558H, 65560H, 65561H, 65562H, 65563H |
| 21 | * 4405010610 | PARA: 65564H, 65565H, 65566H, 65567H, 65570H |
| 21 | * 4405012039 | PARA: 65569H |

CODIGO **65557H, 65558H, 65560H, 65561H, 65562H, 65563H, 65564H, 65565H, 65566H, 65567H, 65569H, 65570H**

DESCRIÇÃO: BOMBA VICTORIA PLUS SILENT H

| | | |
|----|--------------|--|
| 22 | * 4405010612 | PARA: 65557H, 65558H, 65560H, 65561H, 65562H, 65563H |
| 22 | * 4405010614 | PARA: 65564H, 65565H, 65566H, 65567H, 65570H |
| 22 | * 4405010615 | PARA: 65569H |
| 23 | * 4405010144 | PARA: 65557H, 65558H, 65560H, 65561H, 65562H, 65563H |
| 23 | * 4405010145 | PARA: 65564H, 65565H, 65566H, 65567H, 65570H |
| 23 | * 4405010169 | PARA: 65569H |
| 24 | * 4405010635 | PARA: 65557H, 65558H, 65560H, 65561H, 65562H, 65563H |
| 24 | * 4405010636 | PARA: 65564H, 65565H, 65566H, 65567H, 65570H |
| 24 | * 4405010637 | PARA: 65569H |
| 25 | * 4405010149 | PARA: 65557H |
| 25 | * 4405020121 | PARA: 65560H |
| 25 | * 4405020122 | PARA: 65562H |
| 25 | * 4405010150 | PARA: 65564H |
| 25 | * 4405010174 | PARA: 65566H |
| 25 | * 4405010175 | PARA: 65569H |
| 26 | * 4405010983 | PARA: 65557H, 65560H, 65562H |
| 26 | * 4405010984 | PARA: 65564H, 65566H, 65569H |
| 26 | * 4405010985 | PARA: 65558H, 65561H, 65563H |
| 26 | * 4405010986 | PARA: 65565H, 65567H, 65570H |
| 28 | * 65557R0475 | PARA: 65557H |
| 28 | * 65558R0475 | PARA: 65558H |
| 28 | * 65560R0475 | PARA: 65560H |
| 28 | * 65561R0475 | PARA: 65561H |
| 28 | * 65562R0475 | PARA: 65562H |
| 28 | * 65563R0475 | PARA: 65563H |
| 28 | * 65564R0475 | PARA: 65564H |
| 28 | * 65565R0475 | PARA: 65565H |
| 28 | * 65566R0475 | PARA: 65566H |
| 28 | * 65567R0475 | PARA: 65567H |
| 28 | * 65569R0475 | PARA: 65569H |
| 28 | * 65570R0475 | PARA: 65570H |