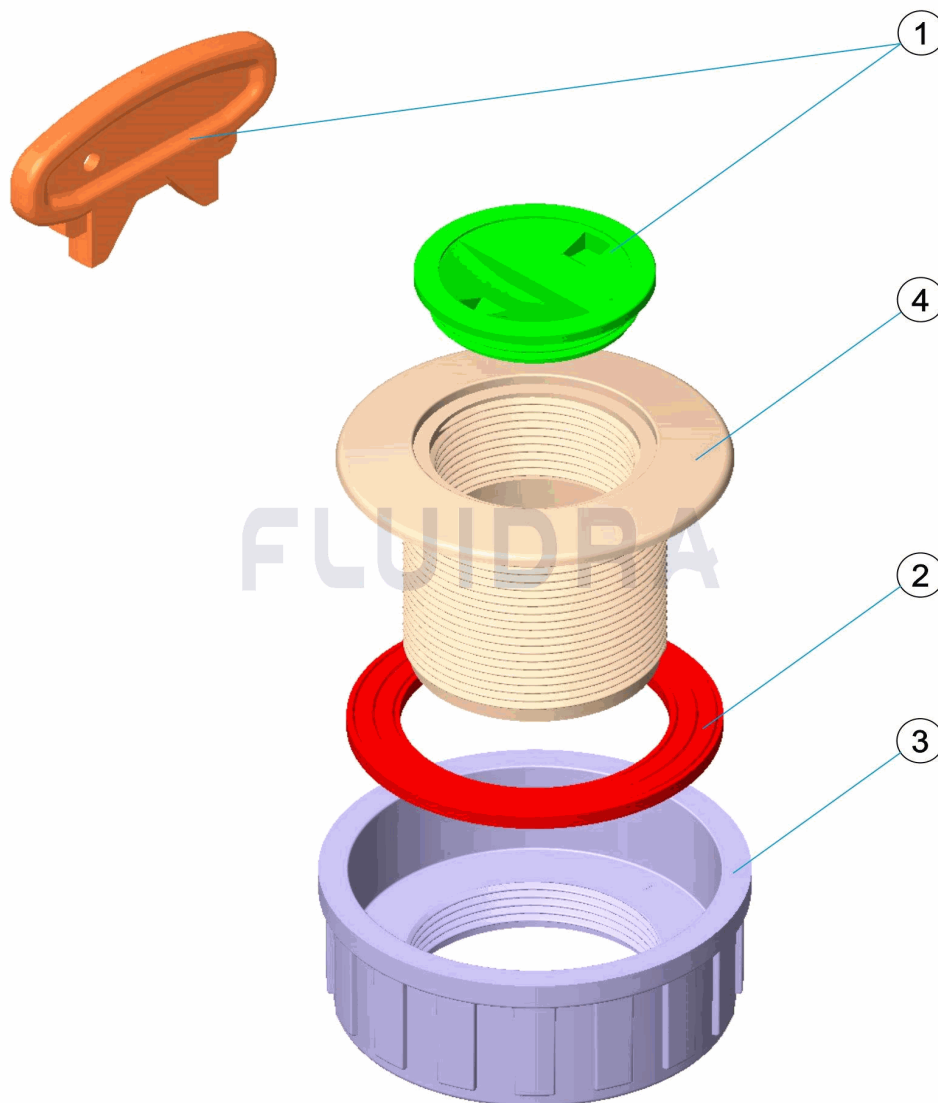


CODIGO **38805**

DESCRIPCION: **BOQUILLA ASPIRACION**

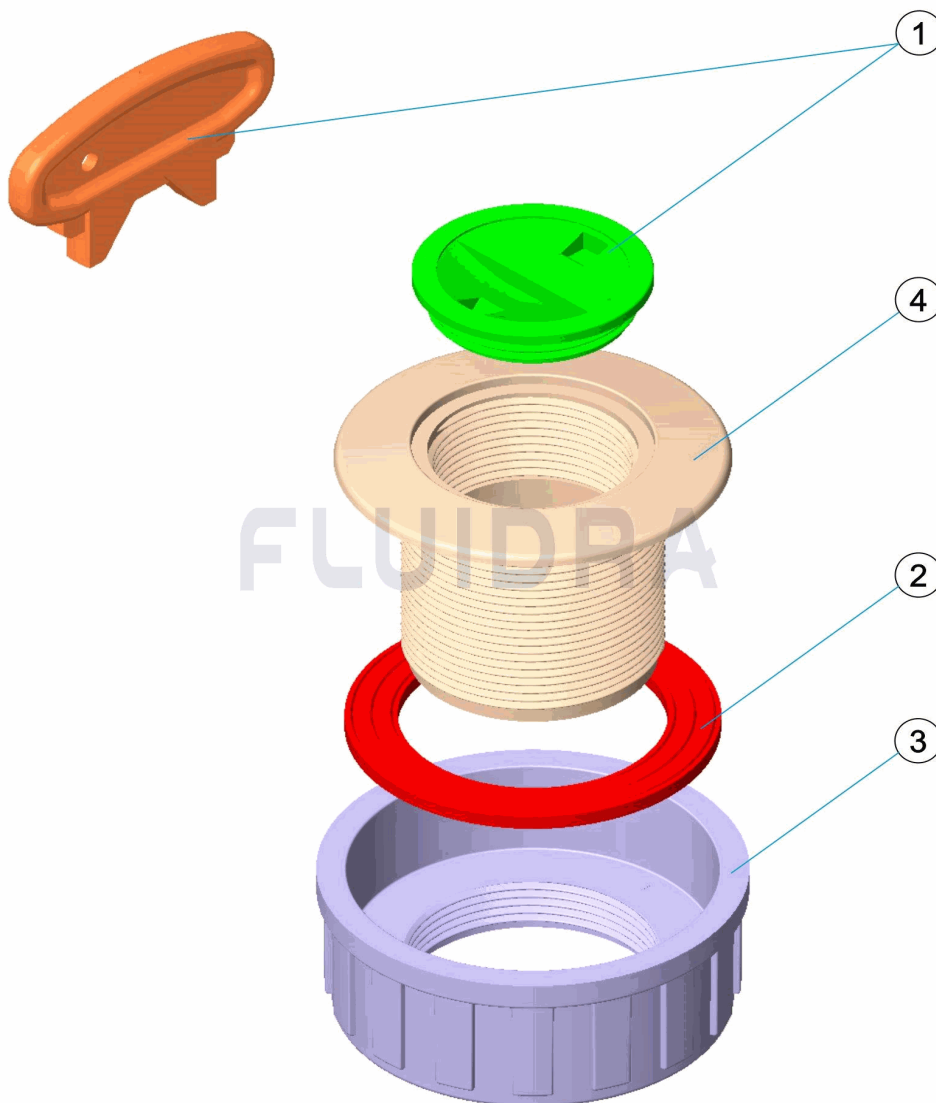


ESPAÑOL

POS	CODIGO	DESCRIPCION	CANTIDAD	POS	CODIGO	DESCRIPCION	CANTIDAD
1	4402043101	TAPON BOQUILLA		3	4402042101	TUERCA BOQUILLA	
2	4402040139	JUNTA BLANCA SPA (200 UDS)		4	27142R0001	BASE BOQUILLA	

CODE **38805**

DESCRIPTION: **BOUCHE ASPIRATION**

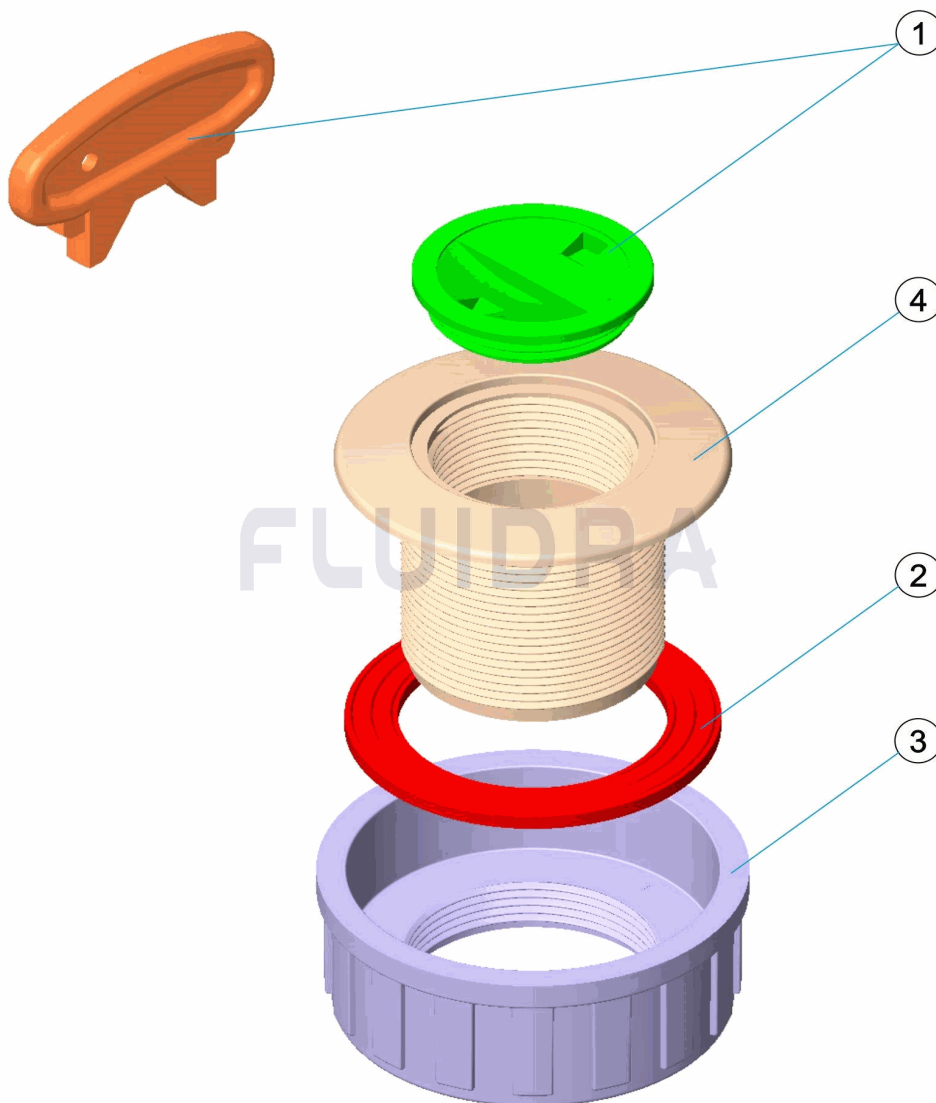


FRANCAIS

POS	CODE	DESCRIPTION	QUANTITE	POS	CODE	DESCRIPTION	QUANTITE
1	4402043101	BOUCHON DE BOUCHE		3	4402042101	ECROU	
2	4402040139	JOINT BLANC SPA (200 UTS)		4	27142R0001	CORPS BOUCHE	

CODE **38805**

DESCRIPTION: **SUCTION NOZZLE**

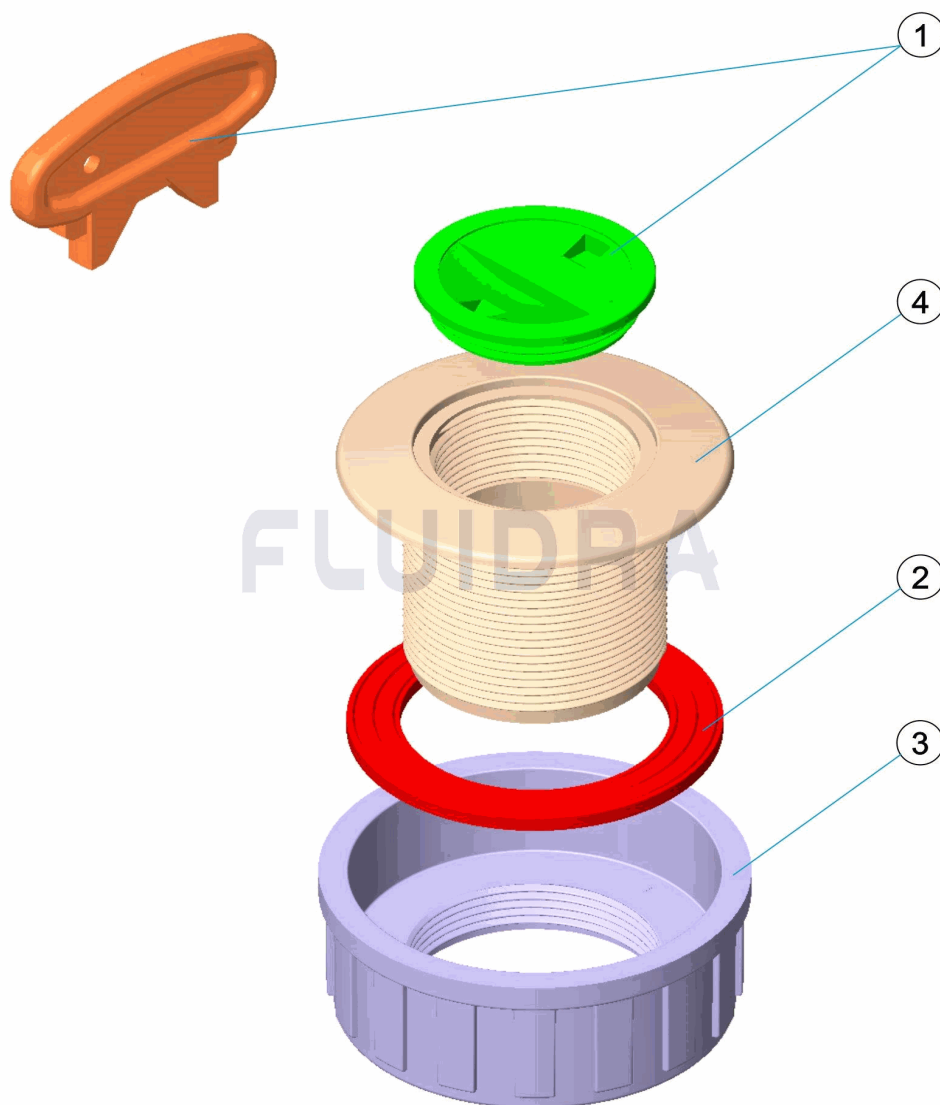


ENGLISH

POS	CODE	DESCRIPTION	QUANTITY	POS	CODE	DESCRIPTION	QUANTITY
1	4402043101	INLET CAP		3	4402042101	INLET NUT	
2	4402040139	SPA WHITE GASKET (200 UTS)		4	27142R0001	INLET BASE	

CODICE **38805**

DESCRIZIONE: **BOCCHETTA ASPIRAZIONE**

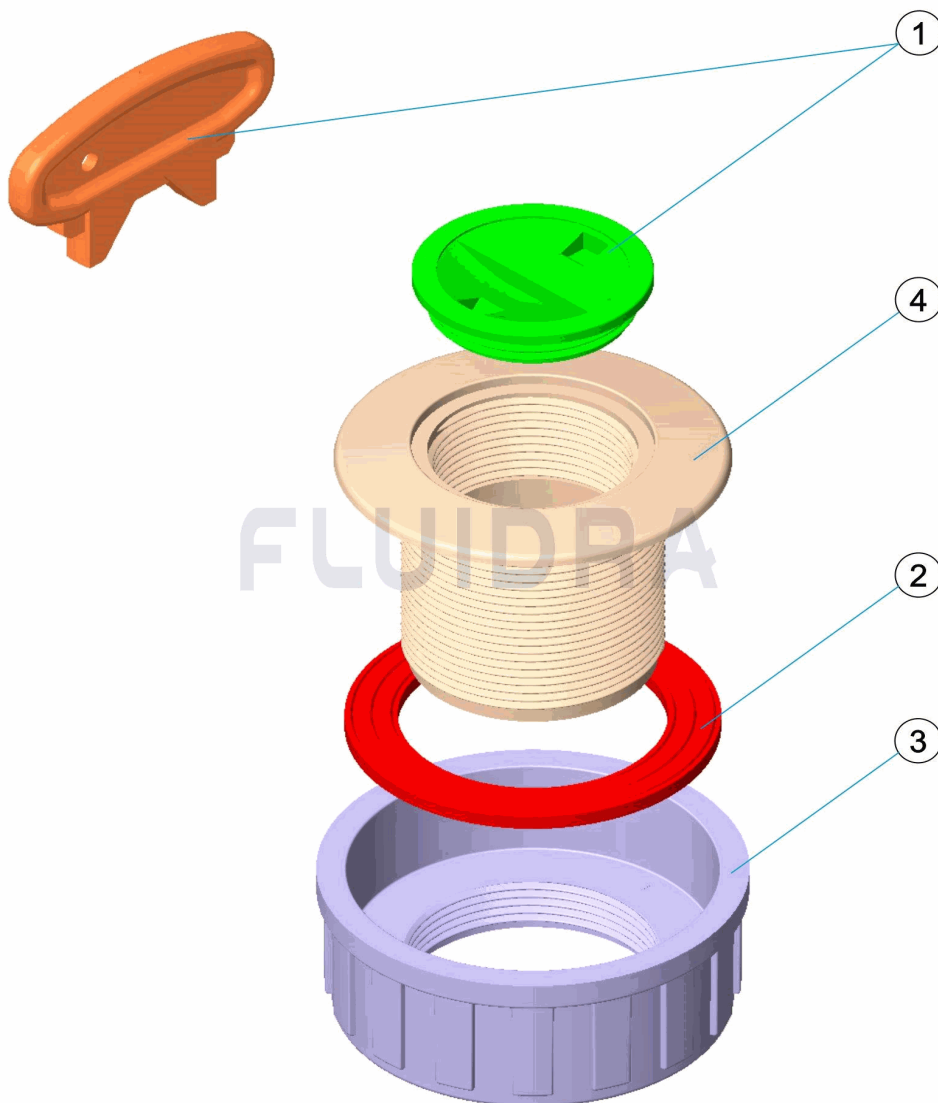


ITALIANO

POS	CODICE	DESCRIZIONE	QUANTITA'	POS	CODICE	DESCRIZIONE	QUANTITA'
1	4402043101	COPERCHIO BOCCHETTA		3	4402042101	GHIERA BOCCHETTA	
2	4402040139	GUARNIZIONE BIANCA SPA (200 UTS)		4	27142R0001	BASE BOCCHETTA	

CODE **38805**

BESCHREIBUNG: **ANSAUGDÜSE**

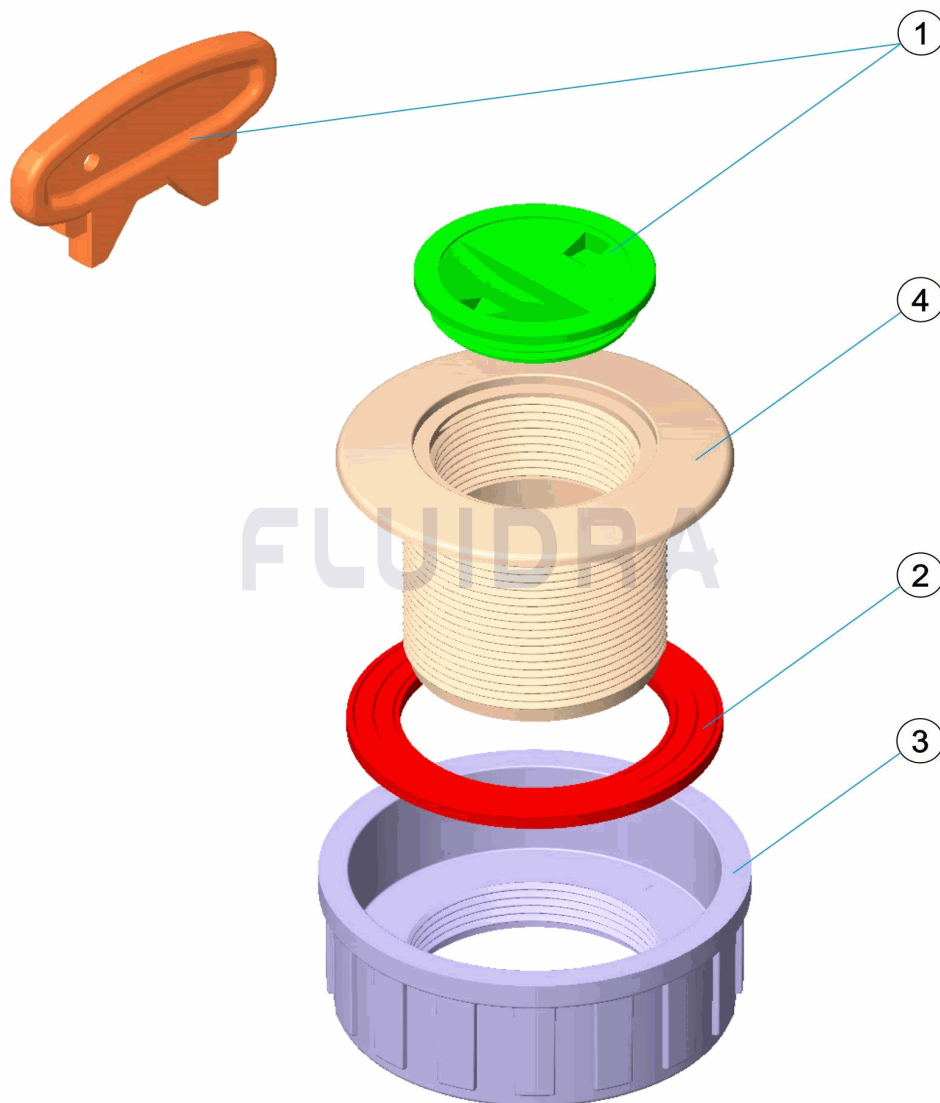


DEUTSCH

POS	CODE	BESCHREIBUNG	MENGE	POS	CODE	BESCHREIBUNG	MENGE
1	4402043101	STOPFEN DÜSE		3	4402042101	MUTTER DÜSE	
2	4402040139	WEIßE DICHTUNG SPA (200 UTS)		4	27142R0001	DÜSENBASIS	

CODIGO **38805**

DESCRIÇÃO: **BOQUILHA ASPIRAÇÃO**



PORTUGUES

POS	CODIGO	DESCRIÇÃO	JANTIDADE	POS	CODIGO	DESCRIÇÃO	JANTIDADE
1	4402043101	TAMPÃO BOCA		3	4402042101	PORCA BOCA	
2	4402040139	JUNTA BRANCO SPA (200 UTS)		4	27142R0001	BASE BOCA	