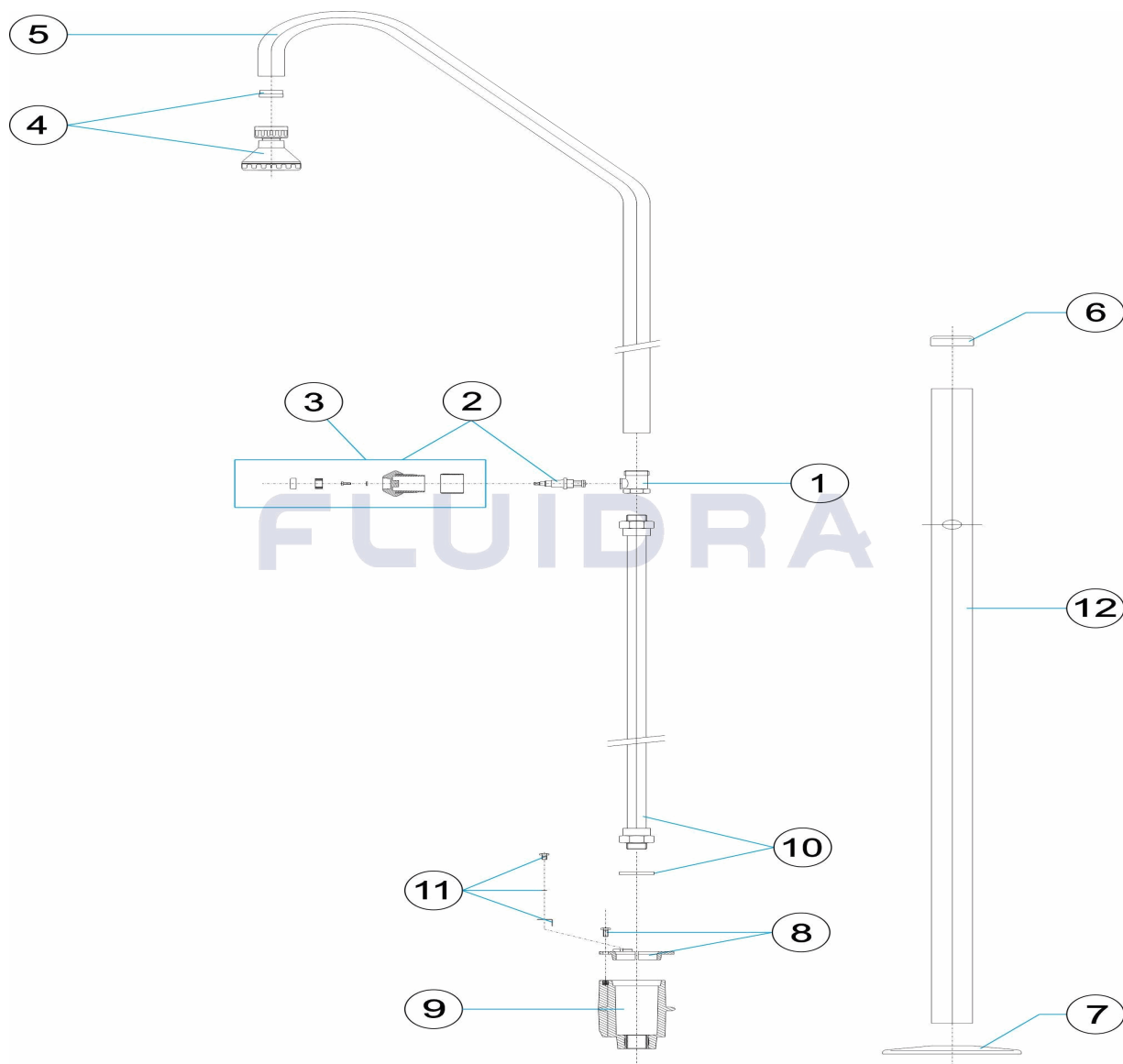


CODIGO **00091**

DESCRIPCION: **DUCHA 1 ROCIADOR 1 VALVULA D. 43**

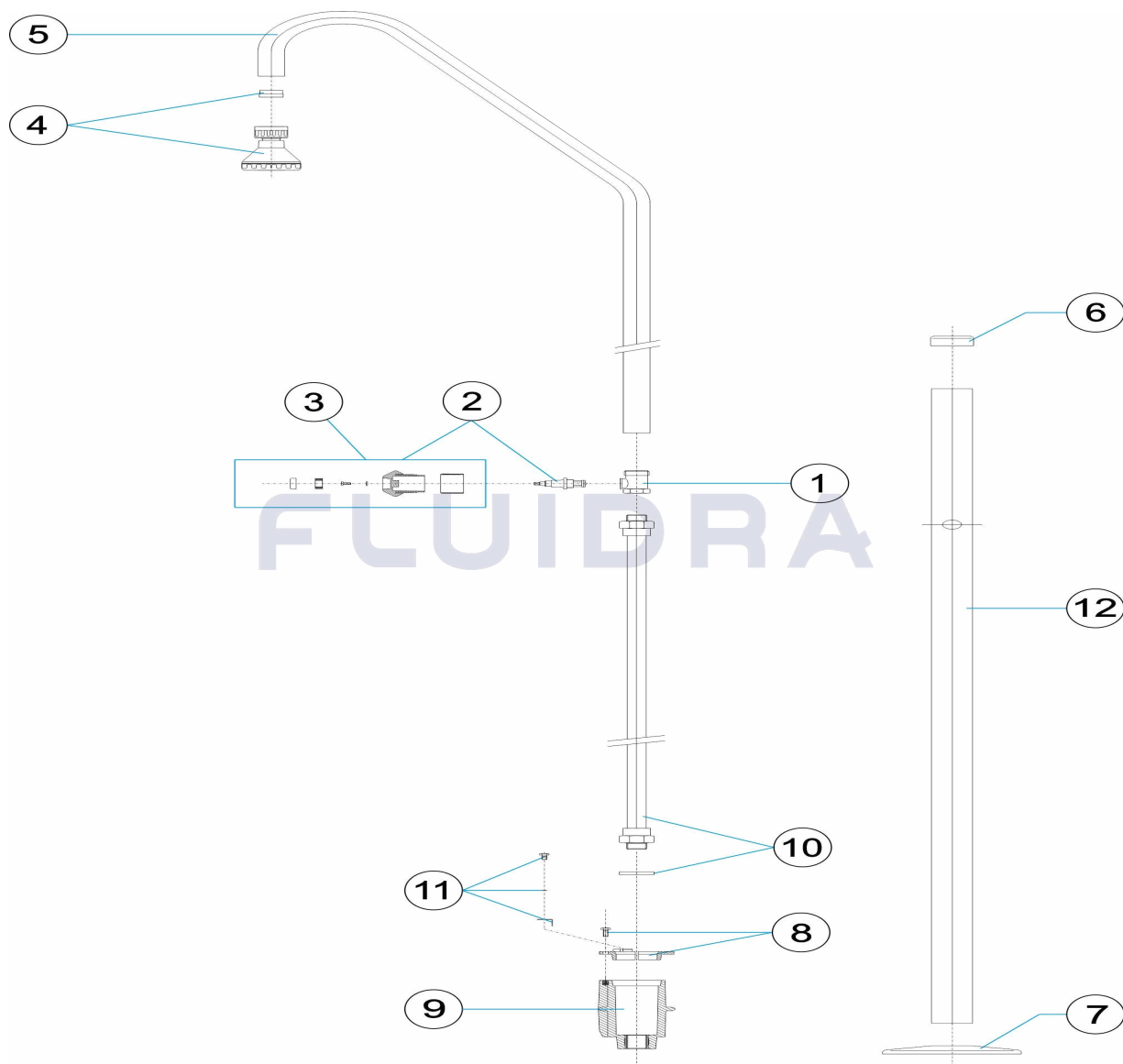


ESPAÑOL

POS	CODIGO	DESCRIPCION	CANTIDAD	POS	CODIGO	DESCRIPCION	CANTIDAD
1	4401040101	CUERPO VALVULA		7	4401040107	TAPETA EMBELLECEDORA INFERIOR 43	
2	4401040102	POMO PLASTICO + EJE		8	4401040108	FIJACION ANCLAJE DUCHA 43	
3	4401040103	POMO PLASTICO		9	4401040109	CUERPO ANCLAJE DUCHA	
4	4401040104	PIÑA DUCHA		10	4401040110	TUBO 1/2"	
5	4401040105	BRAZO DUCHA		11	4401040903	TOMA DE TIERRA	
6	4401040106	TAPETA EMBELLECEDORA SUPERIOR 43		12	00091R0001	TUBO EXTERIOR D. 43	

CODE 00091

DESCRIPTION: DOUCHE 1 POMMEAU 1 ROBINET D.43

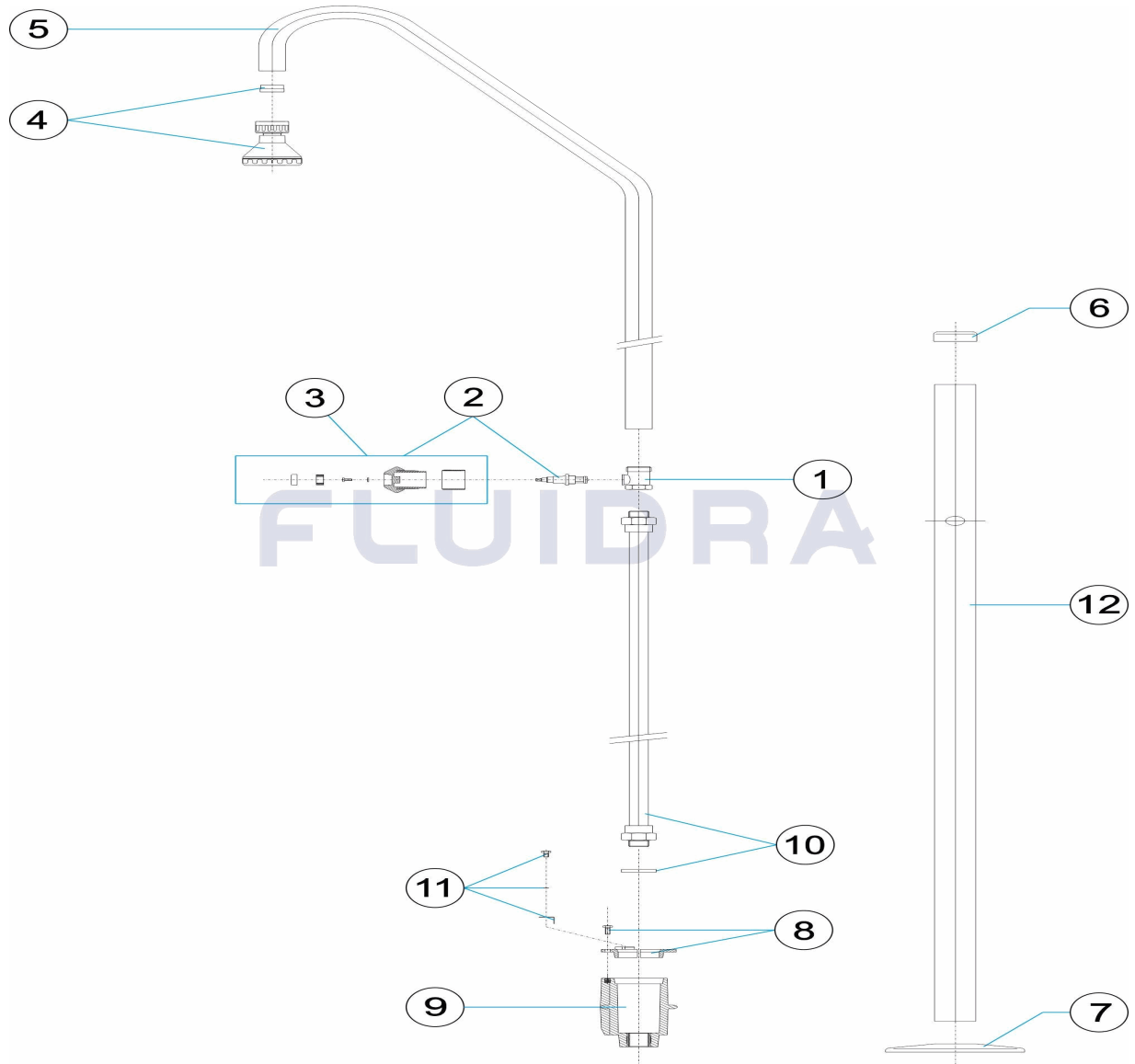


FRANCAIS

POS	CODE	DESCRIPTION	QUANTITE	POS	CODE	DESCRIPTION	QUANTITE
1	4401040101	TE ROBINET DE DOUCHE		7	4401040107	ENJOLIVEUR INFERIEUR 43	
2	4401040102	ROBINET PLASTIQUE + AXE		8	4401040108	1/2 ENCRAGE SUPERIEUR AVEC PRISE DE	
3	4401040103	ROBINET PLASTIQUE		9	4401040109	CORPS D'ANCRAGE DE DOUCHE	
4	4401040104	POMMEAU DE DOUCHE		10	4401040110	TUBE 1/2'	
5	4401040105	BRAS DE DOUCHE		11	4401040903	PRISE DE TERRE	
6	4401040106	ENJOLIVEUR SUPERIEUR 43		12	00091R0001	TUBE EXTERIEUR D.43	

CODE 00091

DESCRIPTION: SHOWER 1 SHOWER HEAD 1 VALVE D.43

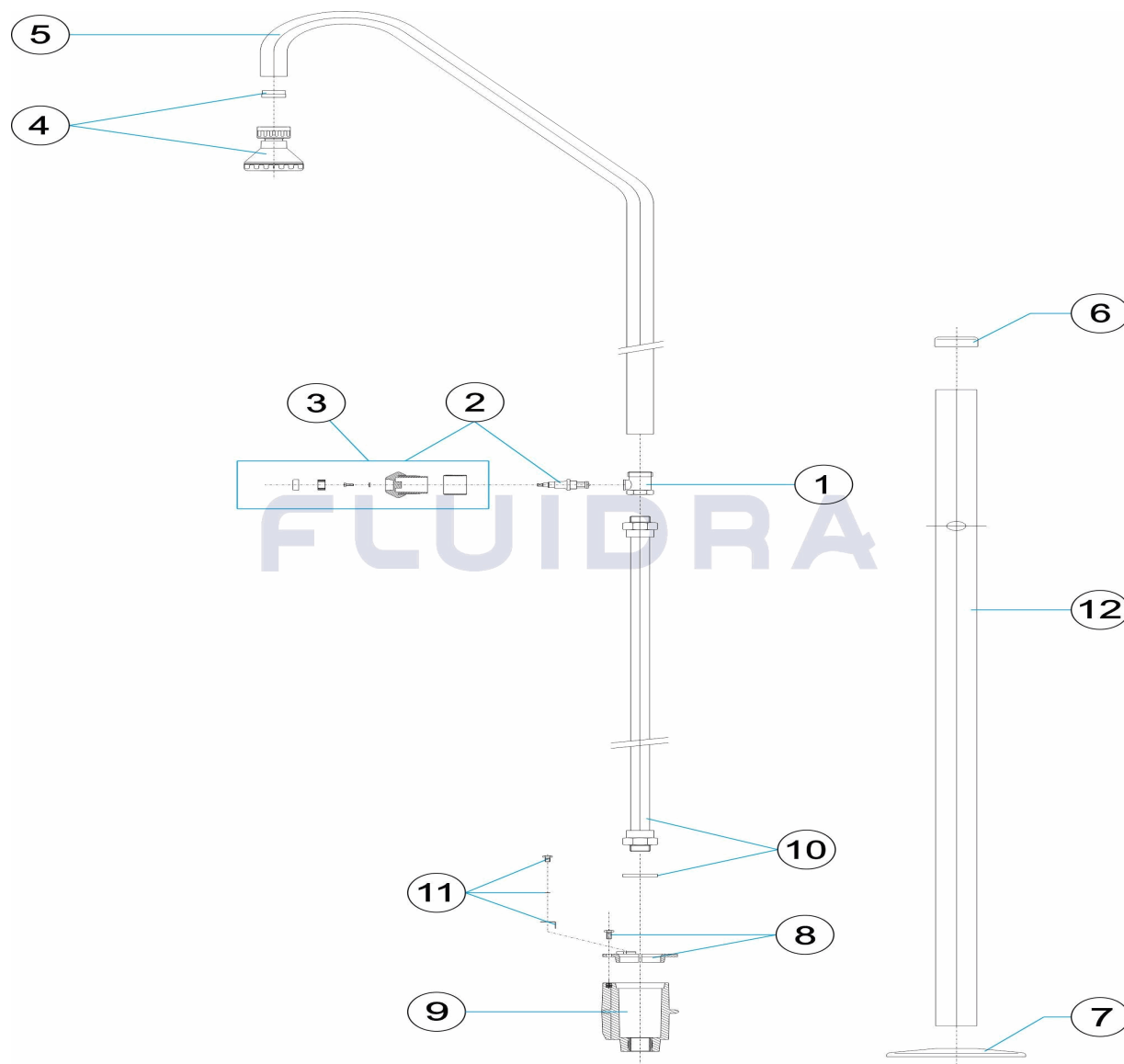


ENGLISH

POS	CODE	DESCRIPTION	QUANTITY	POS	CODE	DESCRIPTION	QUANTITY
1	4401040101	VALVE SOCKET		7	4401040107	BOTTOM ESCUTCHEON 43	
2	4401040102	PLASTIC HANDLE + PIN		8	4401040108	SHOWER ANCHOR D 43	
3	4401040103	VALVE HANDLE		9	4401040109	SHOWER ANCHORING FIXTURE	
4	4401040104	SHOWER HEAD		10	4401040110	1/2' PIPE	
5	4401040105	SHOWER ARM		11	4401040903	EARTH CONNECTION	
6	4401040106	TOP ESCUTCHEON PLATE 43		12	00091R0001	COLUMN D 43	

CODICE **00091**

DESCRIZIONE: **DOCCIA 1 SPRUZZATORE 1 VALVOLA D. 43**

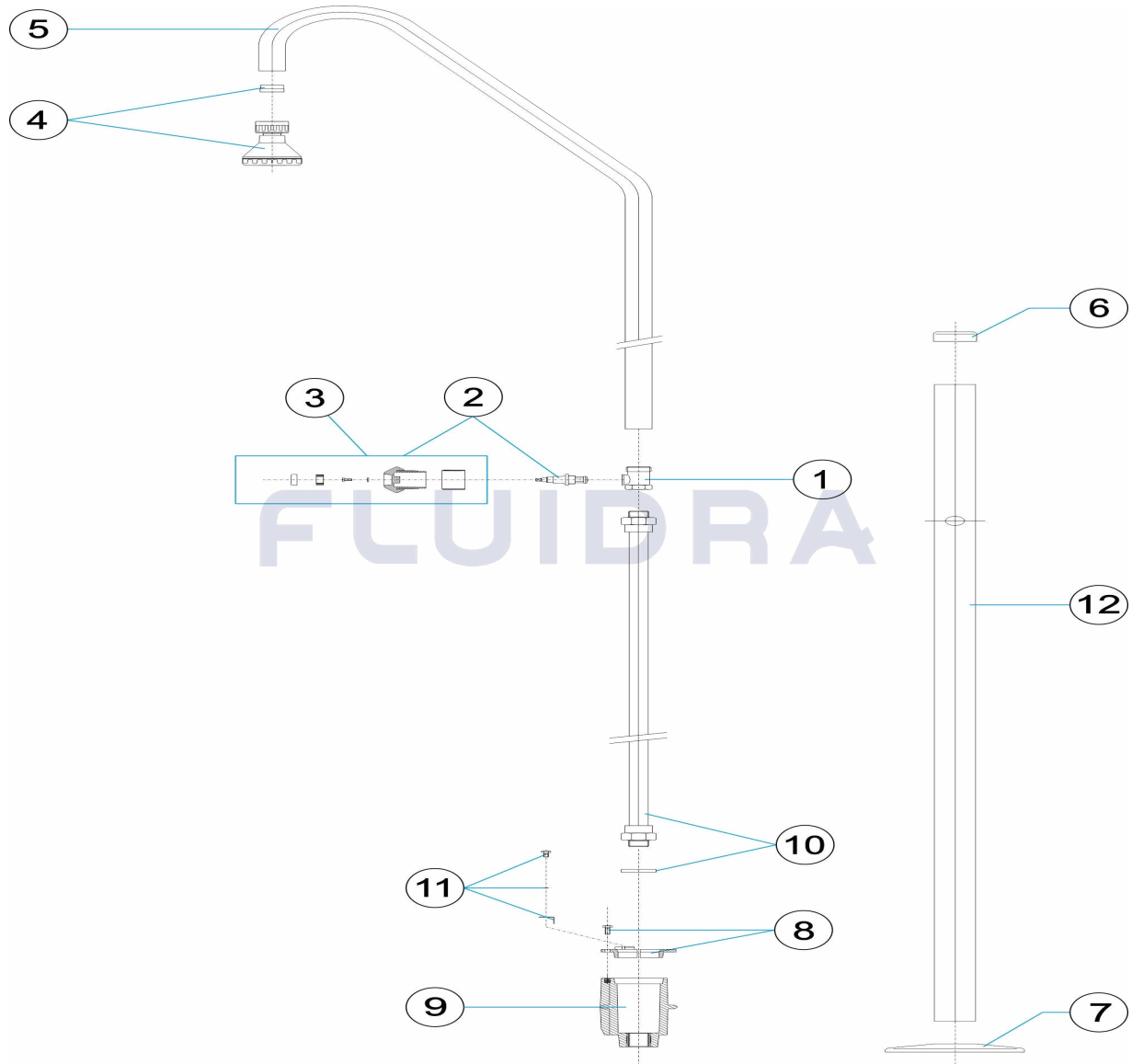


ITALIANO

POS	CODICE	DESCRIZIONE	QUANTITA'	POS	CODICE	DESCRIZIONE	QUANTITA'
1	4401040101	CORPO VALVOLA		7	4401040107	COPRIFLANGIA 43	
2	4401040102	POMELLO + ASSE VALVOLA		8	4401040108	FISSAGGIO ANCORAGGIO DOCCIA D 43	
3	4401040103	POMELLO IN PLASTICA		9	4401040109	CORPO ANCORAGGIO DOCCIA	
4	4401040104	DIFFUSORE DOCCIA		10	4401040110	TUBO 1/2'	
5	4401040105	BRACCIO DOCCIA		11	4401040903	PRESA A TERRA	
6	4401040106	COPRIFLANGIA 43		12	00091R0001	TUBO ESTERNO D.43	

CODE **00091**

BESCHREIBUNG: **DUSCHE 1 DUSCHKOPF 1 VENTIL D. 43**

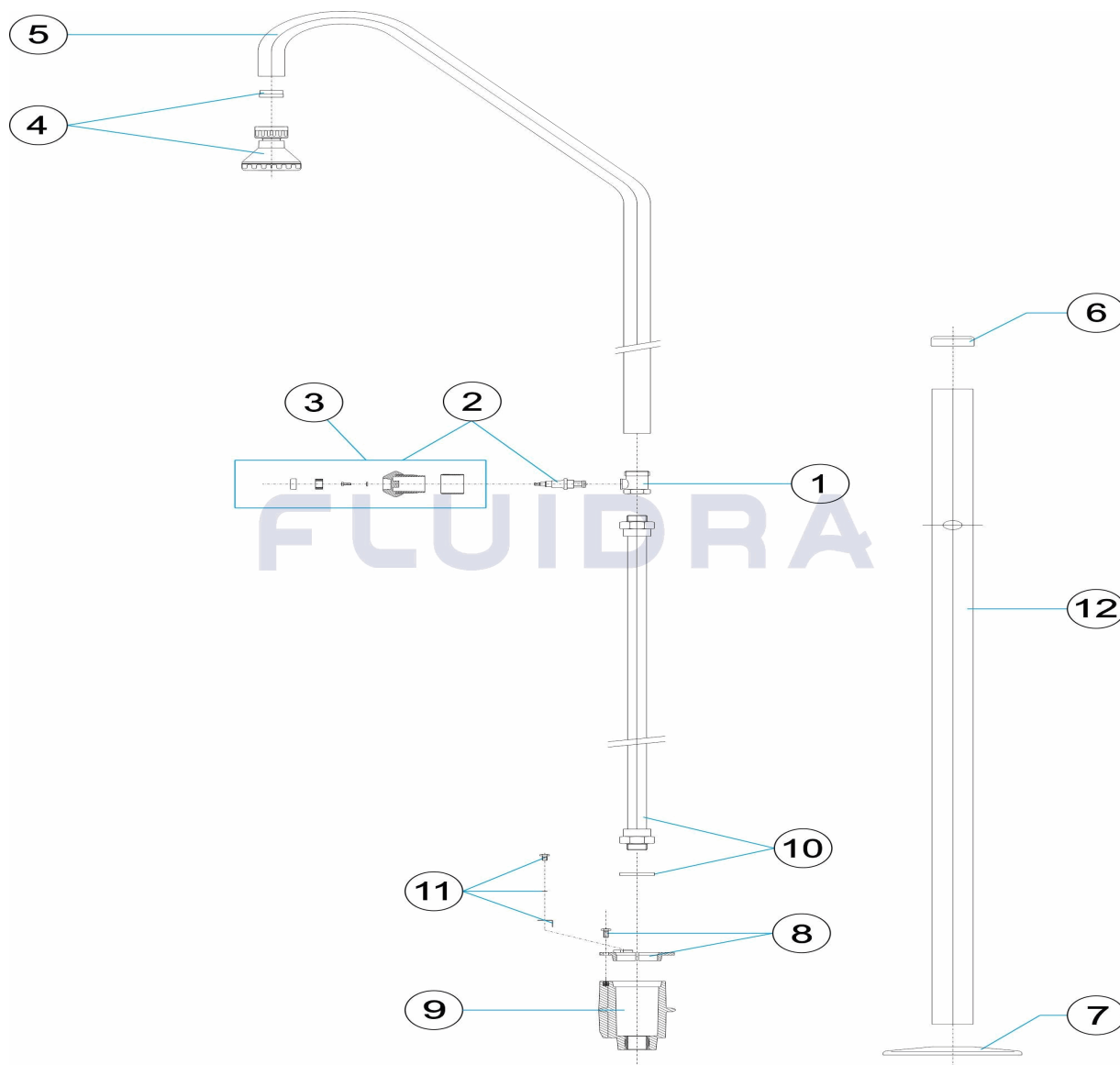


DEUTSCH

POS	CODE	BESCHREIBUNG	MENGE	POS	CODE	BESCHREIBUNG	MENGE
1	4401040101	GEHÄUSE VENTIL		7	4401040107	DEKO-ABSCHLUSSRING UNTEN 43	
2	4401040102	DREHGRIFF KUNSTSTOFF MIT ACHSE		8	4401040108	FIXIERUNG DUSCHVERANKERUNG 43	
3	4401040103	DREHGRIFF KUNSTSTOFF		9	4401040109	VERANKERUNG DUSCHHEINHEIT	
4	4401040104	DUSCHKOPF		10	4401040110	ROHR 1/2'	
5	4401040105	DUSCHARM		11	4401040903	ERDUNG	
6	4401040106	DEKO-ABSCHLUSSRING OBEN 43		12	00091R0001	AUSSENROHR D. 43	

CODIGO **00091**

DESCRIÇÃO: **DUCHE 1 DIFUSOR 1 VÁLVULA D. 43**



PORTUGUES

POS	CODIGO	DESCRIÇÃO	JANTIDADE	POS	CODIGO	DESCRIÇÃO	JANTIDADE
1	4401040101	CORPO VÁLVULA		7	4401040107	ANTIDERRAPANTE	
2	4401040102	MANIPULO PLÁSTICO + EIXO		8	4401040108	FIXAÇÃO ÂNCORA CHUVEIRO D 43	
3	4401040103	MANIPULO PLÁSTICO		9	4401040109	CORPO ÂNCORA CHUVEIRO	
4	4401040104	REGADOR CHUVEIRO		10	4401040110	TUBO 1/2'	
5	4401040105	BRAÇO CHUVEIRO		11	4401040903	LIGAÇÃO A TERRA	
6	4401040106	ANTIDERRAPANTE		12	00091R0001	TUBO EXTERIOR D.43	