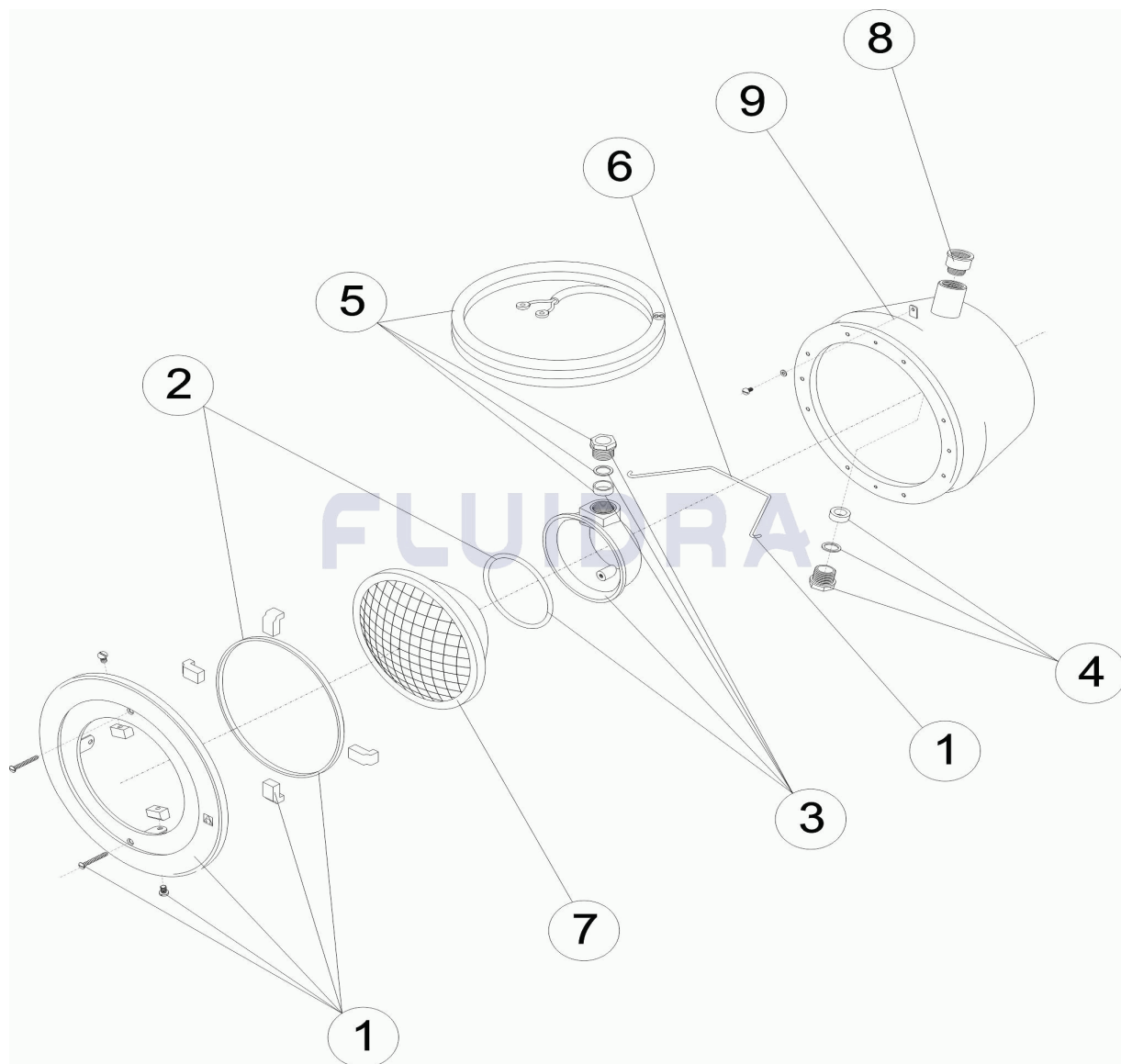


CODIGO **00359**

DESCRIPCION: **PROYECTOR D.295**

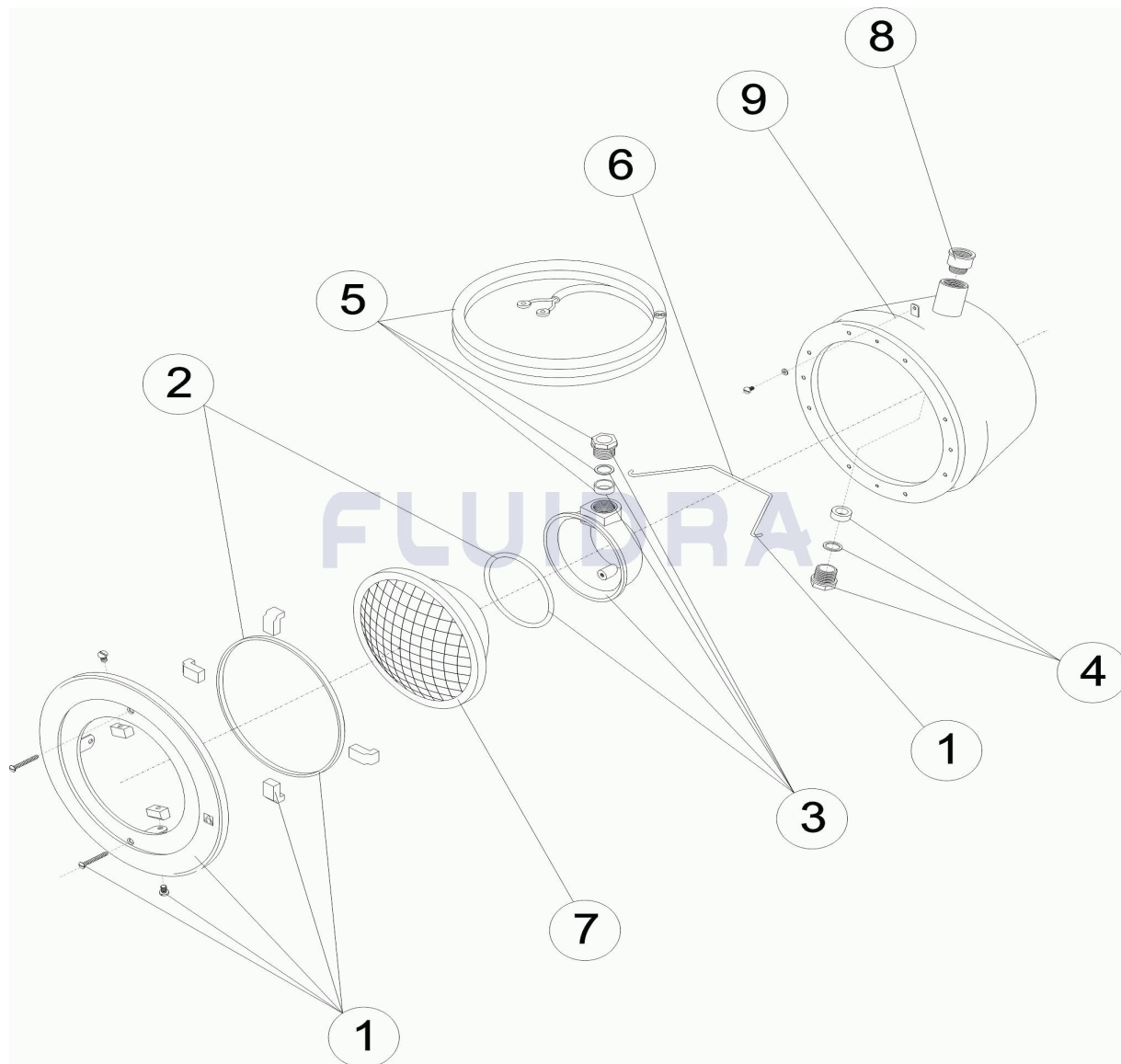


ESPAÑOL

POS	CODIGO	DESCRIPCION	CANTIDAD	POS	CODIGO	DESCRIPCION	CANTIDAD
1	4403010502	ARO FIJACION LAMPARA 295		6	4403010509	MUELLE FIJACION TAPA	
2	4403010503	JUNTA + PERFIL		7	4403010058	LAMPARA 300W.12.V.	
3	4403010504	TAPA CONEXIÓN LAMPARA		8	07838R0002	MANGUITO ADAPTADOR PG 16 - M 25	
4	4403010505	PRENSAESTOPAS PROYECTOR		9	00358R0100	FONDO FOCO	
5	4403010508	CABLE PROYECTOR					

CODE 00359

DESCRIPTION: PROJECTEUR D.295

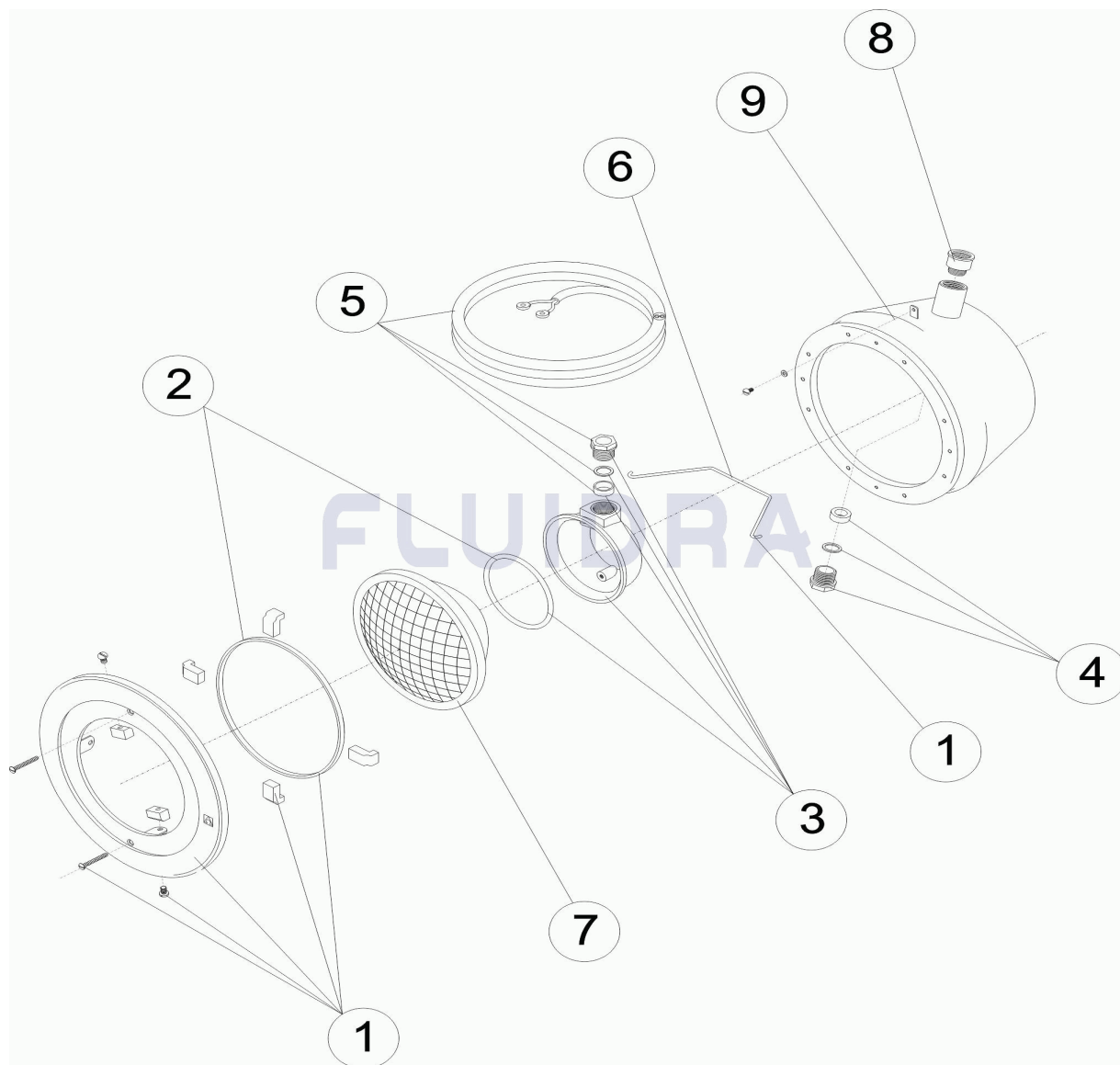


FRANCAIS

POS	CODE	DESCRIPTION	QUANTITE	POS	CODE	DESCRIPTION	QUANTITE
1	4403010502	BRIDE DE FIXATION LAMPE D. 295		6	4403010509	TIGE RESSORT POUR NICHE	
2	4403010503	JOINT ET PROFIL		7	4403010058	LAMPE	
3	4403010504	NICHE PROJECTEUR		8	07838R0002	TUYAU ADAPTATEUR PG 16 - M 25	
4	4403010505	PRESSE ETOUPE		9	00358R0100	FOND PROJECTEUR	
5	4403010508	CABLE PROJECTEUR					

CODE **00359**

DESCRIPTION: **LIGHT D. 295**

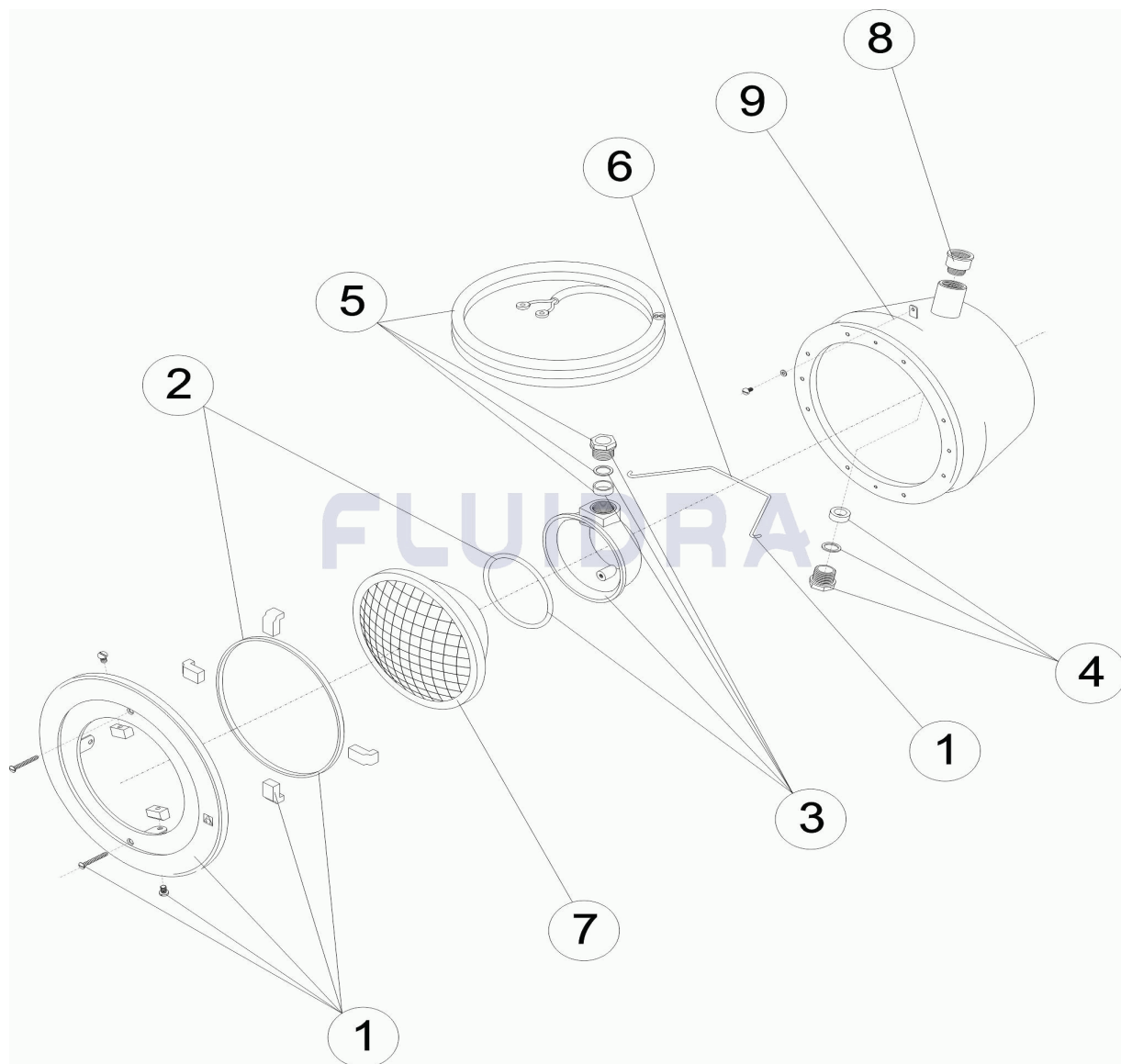


ENGLISH

POS	CODE	DESCRIPTION	QUANTITY	POS	CODE	DESCRIPTION	QUANTITY
1	4403010502	LAMP FIXING RING 295		6	4403010509	COVER FIXING SPRING	
2	4403010503	GASKET + RUBBER PROFILE STRIP		7	4403010058	LIGHTBULB	
3	4403010504	LIGHT CONNECTING COVER		8	07838R0002	HOSE ADAPTER PG 16 - M 25	
4	4403010505	PACKING GLAND GASKET		9	00358R0100	DEEP END LIGHT	
5	4403010508	LIGHT CABLE					

CODICE **00359**

DESCRIZIONE: **PROIETTORE D.295**

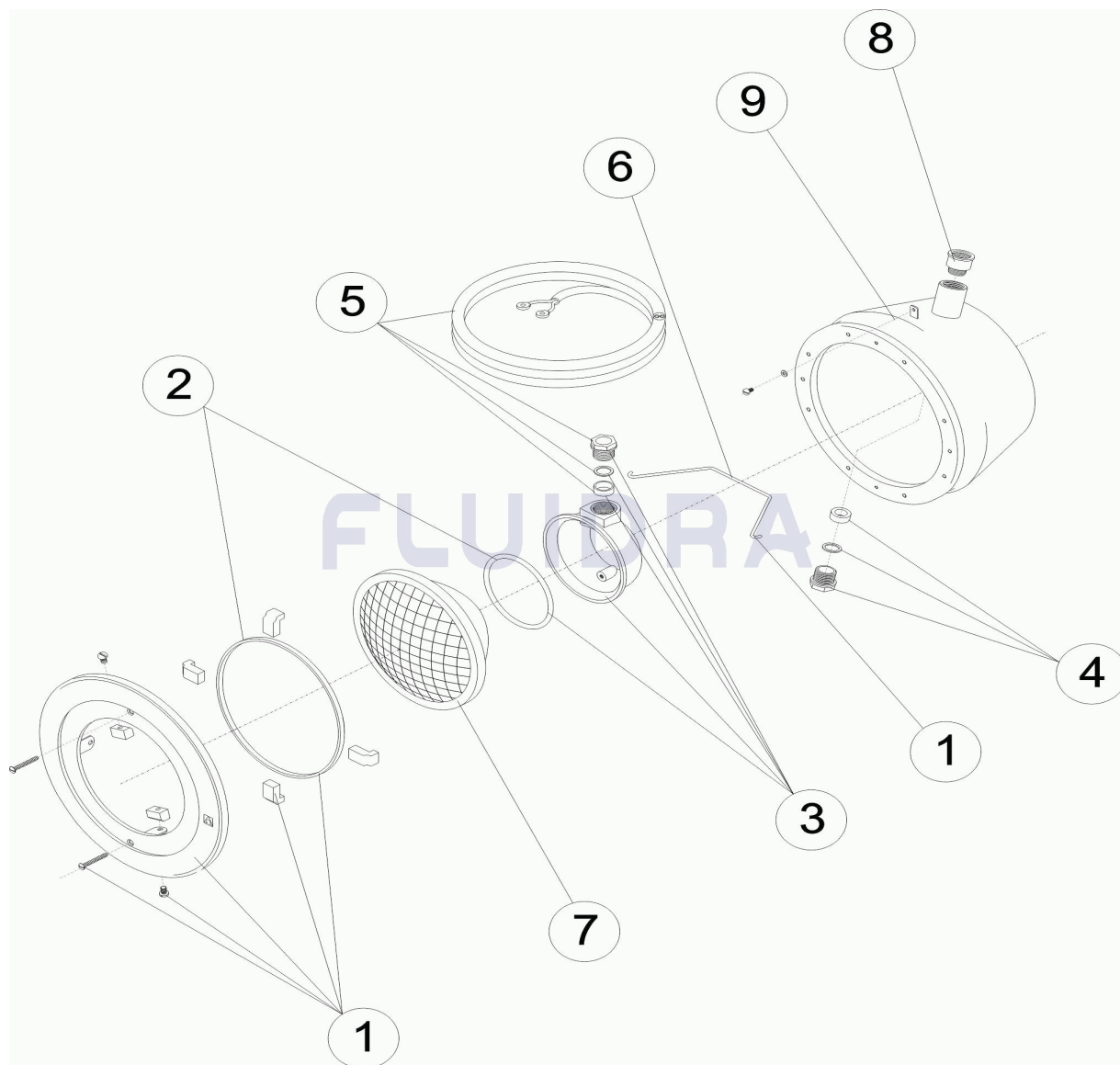


ITALIANO

POS	CODICE	DESCRIZIONE	QUANTITA'	POS	CODICE	DESCRIZIONE	QUANTITA'
1	4403010502	FLANGIA FISSAGGIO LAMPADA 295		6	4403010509	MOLLA FISSAGGIO COPERCHIO	
2	4403010503	GUARNIZIONE + PROFILO		7	4403010058	LAMPADINA	
3	4403010504	COPERCHIO COLLEGAMENTO LAMPADA		8	07838R0002	MANICOTTO ADATTATORE PG 16 - M 25	
4	4403010505	GUARNIZIONE PRESSACAVI		9	00358R0100	FONDO FUOCO	
5	4403010508	CAVO FARO					

CODE **00359**

BESCHREIBUNG: **UWS D.295**

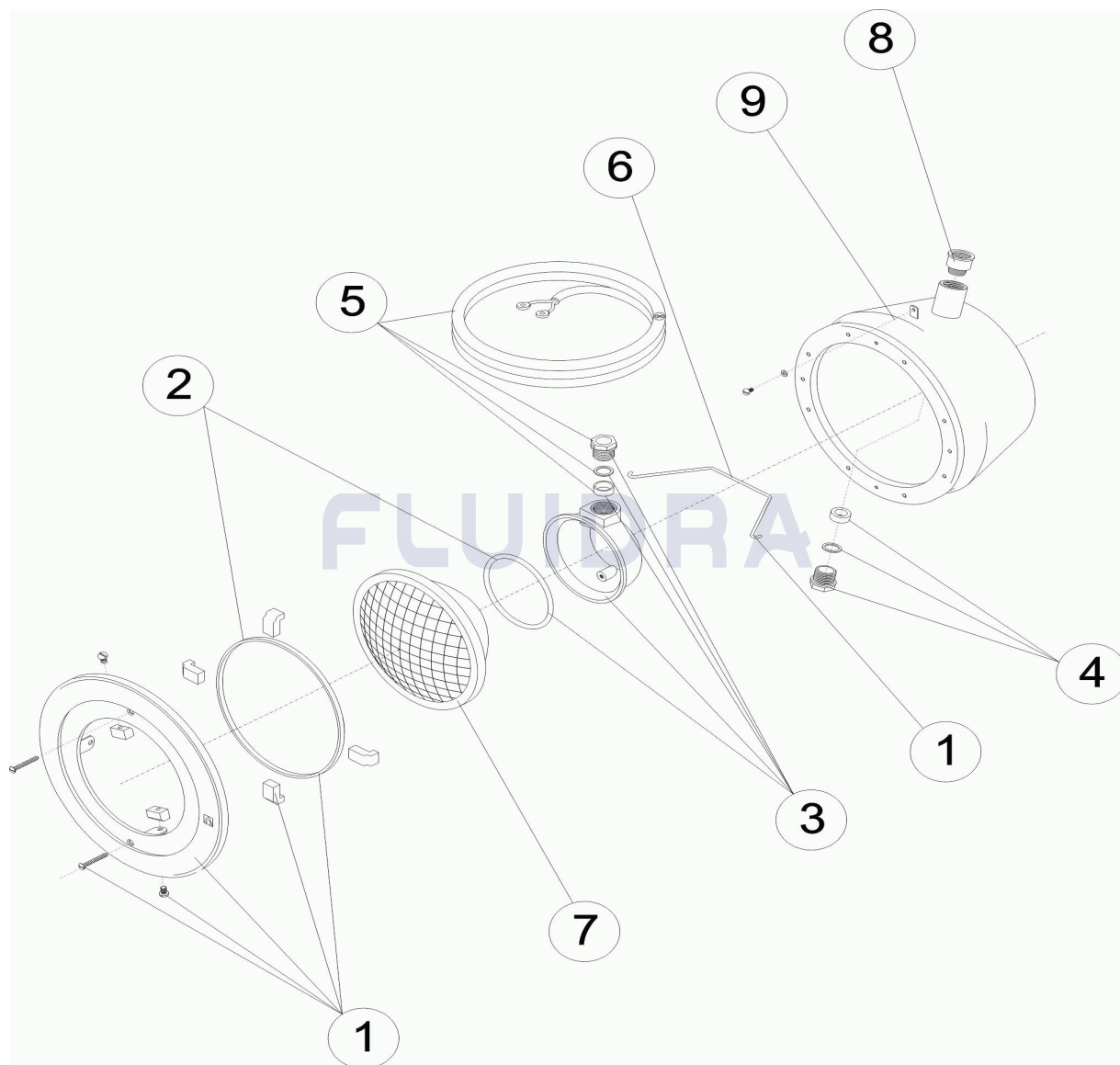


DEUTSCH

POS	CODE	BESCHREIBUNG	MENGE	POS	CODE	BESCHREIBUNG	MENGE
1	4403010502	FIXIERRING LAMPE 295		6	4403010509	FEDER FIXIERUNG ABDECKUNG	
2	4403010503	DICHTUNG MIT PROFIL		7	4403010058	LAMPE 300 W 12 V	
3	4403010504	ABDECKUNG ANSCHLUSS LAMPE		8	07838R0002	NIPPEL ADAPTER PG16 - M 25	
4	4403010505	QUETSCHVERSCHRAUBUNG UWS		9	00358R0100	BASIS UWS	
5	4403010508	UWS-KABEL					

CODIGO **00359**

DESCRIÇÃO: **PROJECTOR D. 295**



PORTUGUES

POS	CODIGO	DESCRIÇÃO	JANTIDADE	POS	CODIGO	DESCRIÇÃO	JANTIDADE
1	4403010502	ARO FIXAÇÃO LÂMPADA 295		6	4403010509	MOLA FIXAÇÃO TAMPA	
2	4403010503	JUNTA + PERFIL		7	4403010058	BOMBILHA	
3	4403010504	TAMPA LIGAÇÃO LÂMPADA		8	07838R0002	MANGA ADAPTADORA PG 16 - M 25	
4	4403010505	JUNTA BUCIN		9	00358R0100	FOCO DE FUNDO	
5	4403010508	CABO PROJECTOR					