

CODIGO **45862, 45863**

DESCRIPCION: **ARMARIO DE MANIOBRA**



1

3

4

2

**ESPAÑOL**

POS	CODIGO	DESCRIPCION	CANTIDAD	POS	CODIGO	DESCRIPCION	CANTIDAD
1	* 4403030101	INTERRUPTOR AUTOMATICO 10A		3	4403030105	INTERRUPTOR DIFERENCIAL 30 MA.	
1	* 4403030102	INTERRUPTOR AUTOMATICO 16A		4	45864	TIMER DIGITAL	
2	4403030104	CONTACTOR 25 A					

**CODIGO 45862, 45863**

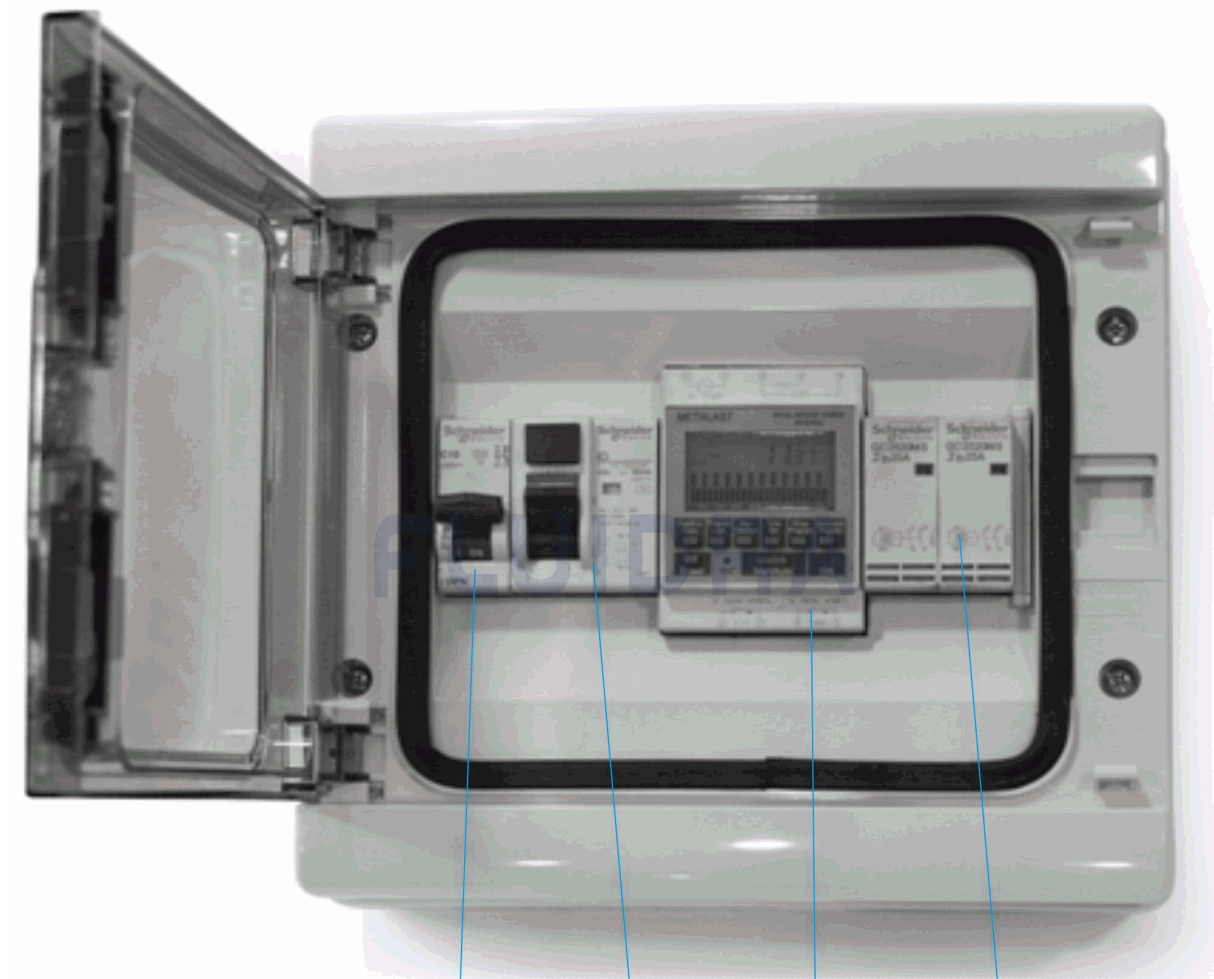
**DESCRIPCION: ARMARIO DE MANIOBRA**

**OBSERVACIONES**

POS	CODIGO	OBSERVACIONES
1	* 4403030101	PARA: 45862
1	* 4403030102	PARA: 45863

CODE **45862, 45863**

DESCRIPTION: **ARMOIRE DE COMMANDES**



1

3

4

2

**FRANCAIS**

POS	CODE	DESCRIPTION	QUANTITE	POS	CODE	DESCRIPTION	QUANTITE
1	* 4403030101	INTERRUPTEUR AUTOMATIQUE 10A		3	4403030105	INTERRUPTEUR DIFFERENTIEL 30MA	
1	* 4403030102	INTERRUPTEUR AUTOMATIQUE 16A		4	45864	TIMER DIGITAL	
2	4403030104	CONTACTEUR 25 A					

CODE **45862, 45863**

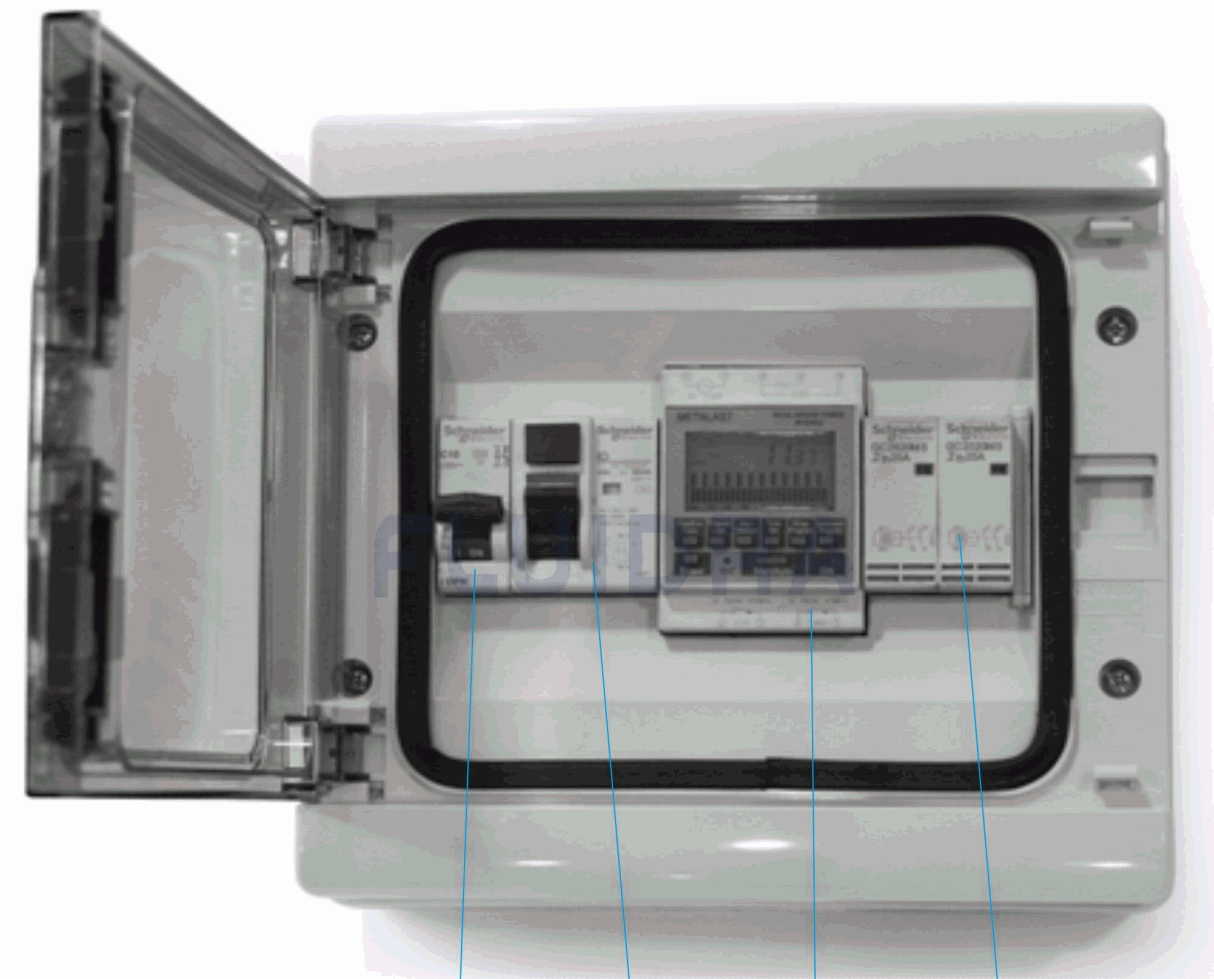
DESCRIPTION: **ARMOIRE DE COMMANDES**

**OBSERVATIONS**

POS	CODE	OBSERVATIONS
1	* 4403030101	POUR: 45862
1	* 4403030102	POUR: 45863

CODE **45862, 45863**

DESCRIPTION: **CONTROL PANEL**



1

3

4

2

**ENGLISH**

POS	CODE	DESCRIPTION	QUANTITY	POS	CODE	DESCRIPTION	QUANTITY
1	* 4403030101	10A AUTOMATIC SWITCH		3	4403030105	30 MA DIFFERENTIAL SWITCH	
1	* 4403030102	16A AUTOMATIC SWITCH		4	45864	DIGITAL TIMER	
2	4403030104	CONTACTOR 25 A					

CODE                    **45862, 45863**

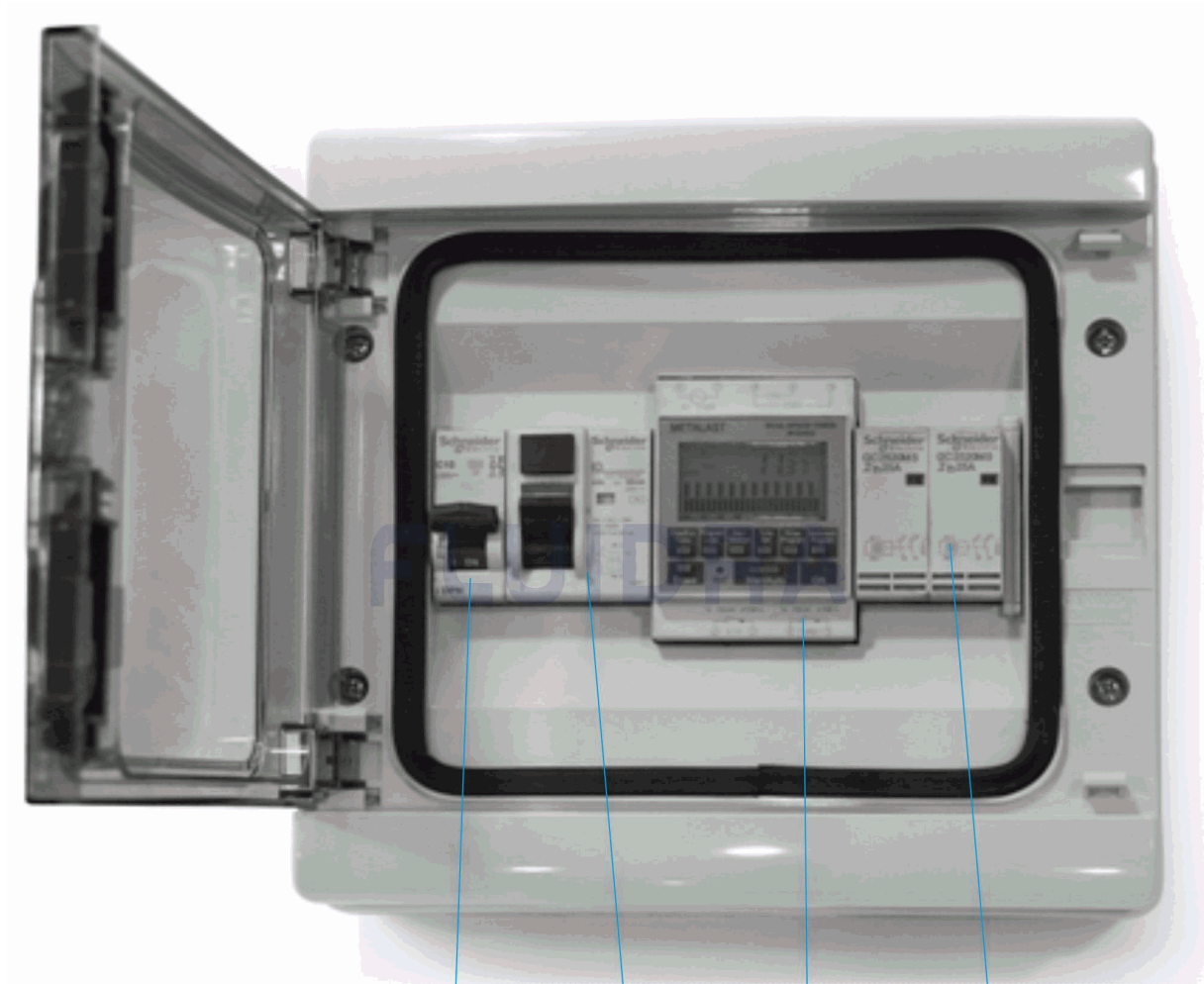
DESCRIPTION: **CONTROL PANEL**

### OBSERVATIONS

POS	CODE	OBSERVATIONS
1	* 4403030101	FOR: 45862
1	* 4403030102	FOR: 45863

CODICE **45862, 45863**

DESCRIZIONE: **ARMADIO DI MANODOPERA**



1

3

4

2

**ITALIANO**

POS	CODICE	DESCRIZIONE	QUANTITA'	POS	CODICE	DESCRIZIONE	QUANTITA'
1	* 4403030101	INTERRUTTORE AUTOMATICO 10 A		3	4403030105	INTERRUTTORE DIFFERENZIALE 30 MA	
1	* 4403030102	INTERRUTTORE AUTOMATICO 16 A		4	45864	TIMER DIGITALE	
2	4403030104	TELERUTTORE 25 A					

CODICE **45862, 45863**

DESCRIZIONE: **ARMADIO DI MANODOPERA**

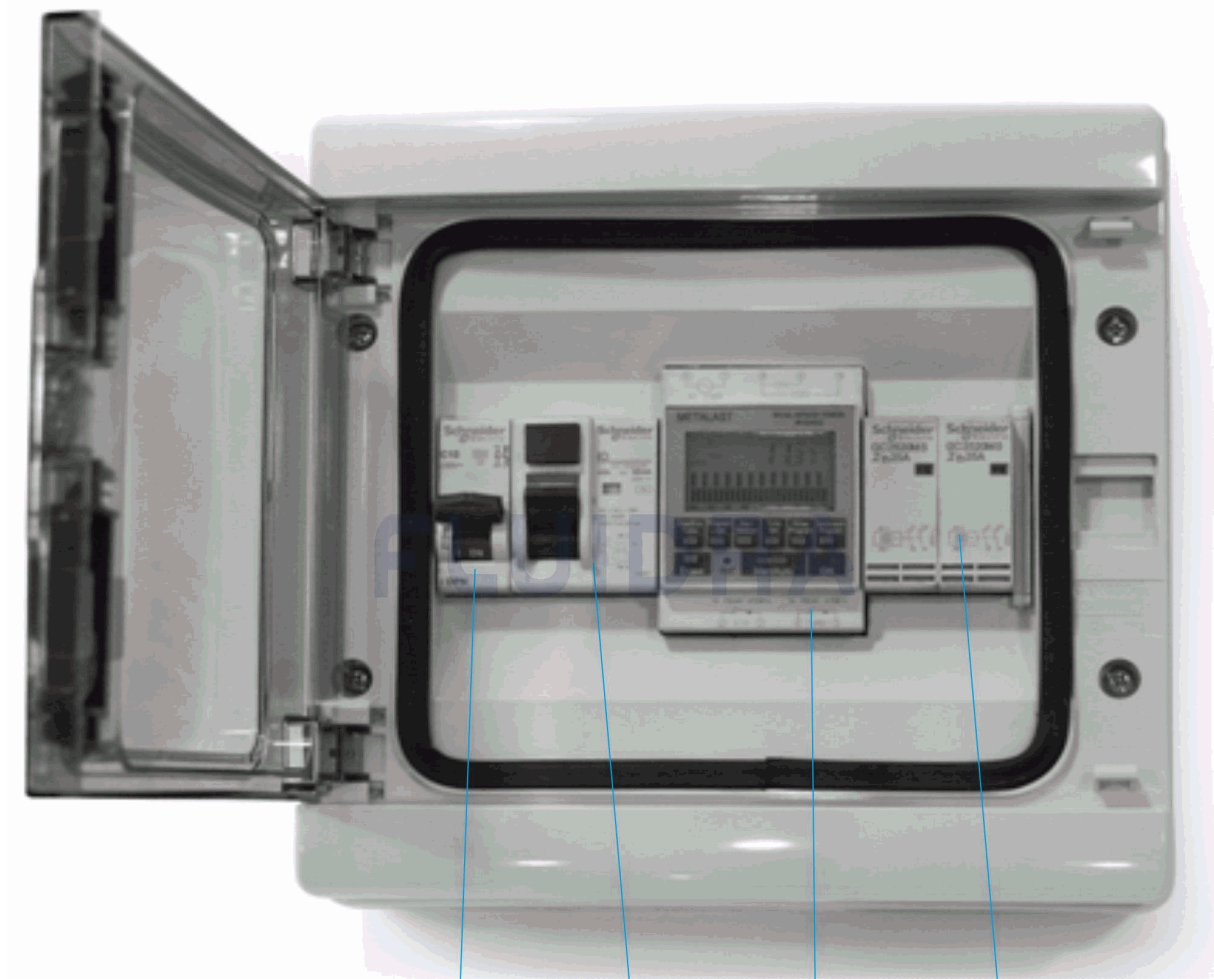
**OSSERVAZIONI**

POS	CODICE	OSSERVAZIONI
1	* 4403030101	PER: 45862
1	* 4403030102	PER: 45863



CODE **45862, 45863**

BESCHREIBUNG: **STEUERSCHRANK**



1

3

4

2

**DEUTSCH**

POS	CODE	BESCHREIBUNG	MENGE	POS	CODE	BESCHREIBUNG	MENGE
1	* 4403030101	TRENNSCHALTER 10 A		3	4403030105	TRENNSCHALTER 30 MA	
1	* 4403030102	TRENNSCHALTER 16 A		4	45864	DIGITALTIMER	
2	4403030104	SCHÜTZ 25 A					

CODE **45862, 45863**

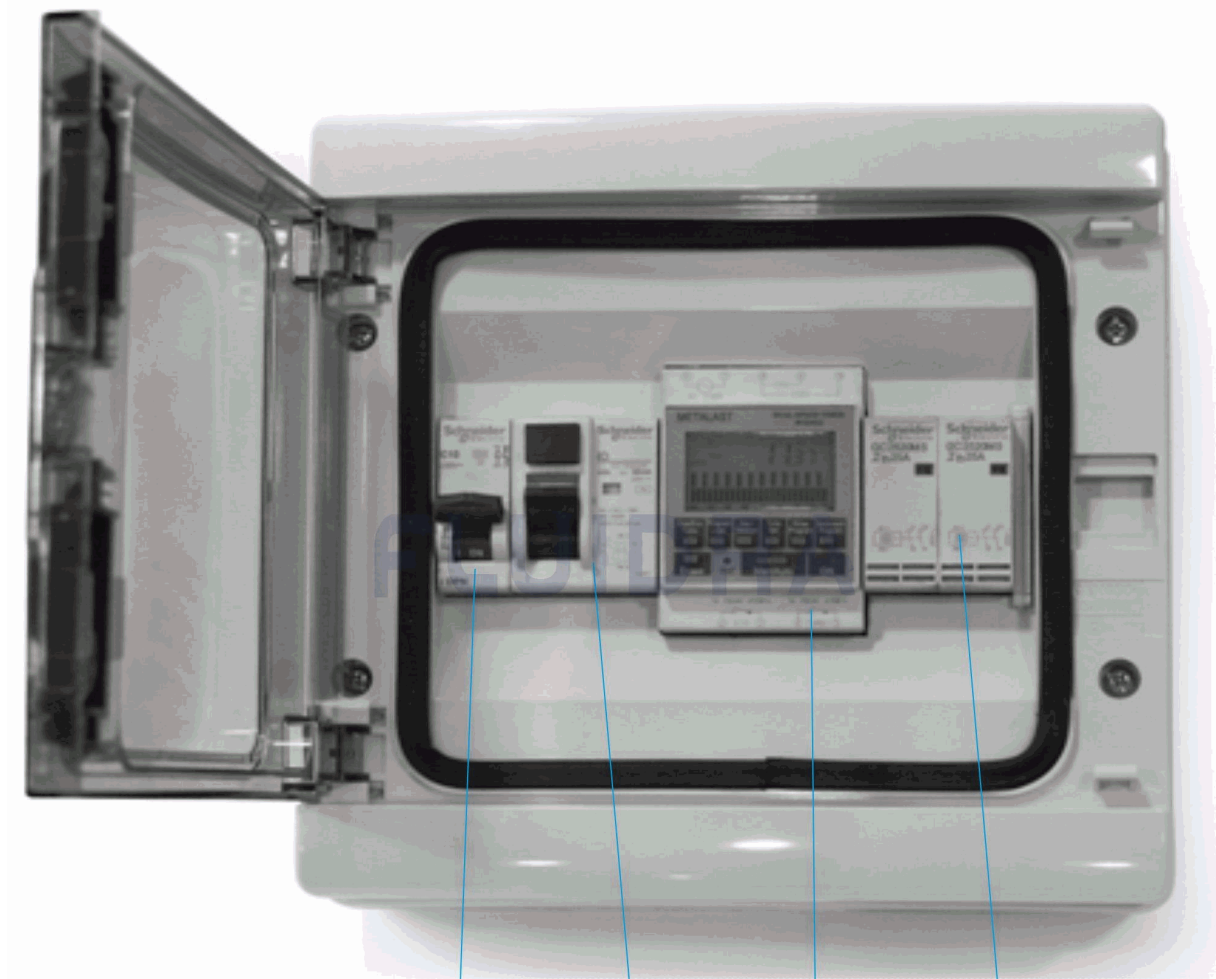
BESCHREIBUNG: **STEUERSCHRANK**

**HINWEISE**

POS	CODE	HINWEISE
1	* 4403030101	FÜR: 45862
1	* 4403030102	FÜR: 45863

CODIGO **45862, 45863**

DESCRIÇÃO: **ARMÁRIO DE MANOBRA**



1

3

4

2

**PORTUGUES**

POS	CODIGO	DESCRIÇÃO	JANTIDADE	POS	CODIGO	DESCRIÇÃO	JANTIDADE
1	* 4403030101	INTERRUPTOR AUTOMATICO 10A		3	4403030105	INTERRUPTOR DIFERENCIAL 30 MA.	
1	* 4403030102	INTERRUPTOR AUTOMATICO 16A		4	45864	TEMPORIZADOR DIGITAL	
2	4403030104	CONTACTOR 25 A					

**CODIGO 45862, 45863**

**DESCRIÇÃO: ARMÁRIO DE MANOBRA**

**OBSERVAÇÕES**

POS	CODIGO	OBSERVAÇÕES
1	* 4403030101	PARA: 45862
1	* 4403030102	PARA: 45863