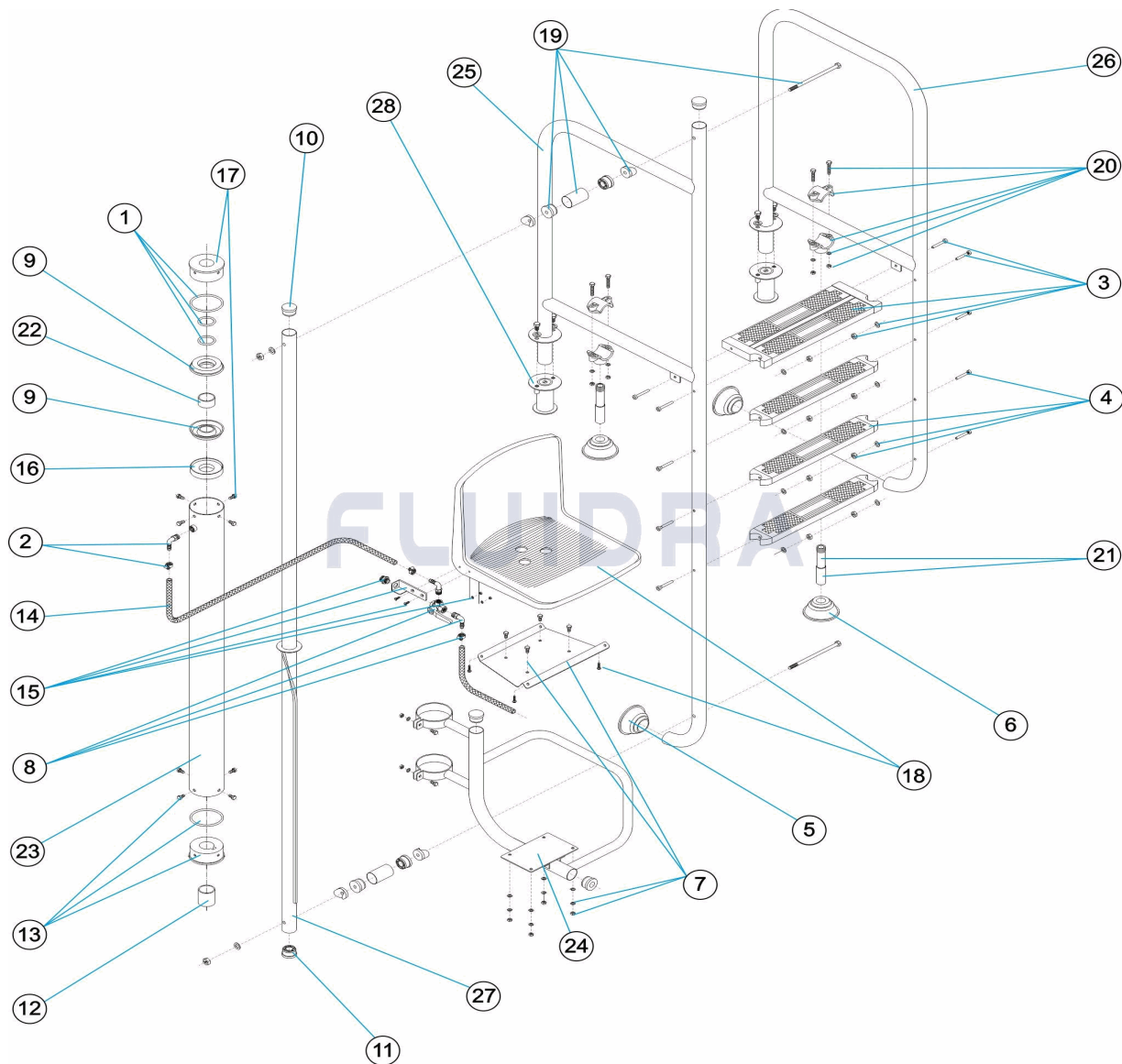


CODIGO 11277, 15219, 28619, 28620, 28621, 28622

DESCRIPCION: ELEVADOR HIDRÁULICO



ESPAÑOL

POS	CODIGO	DESCRIPCION	CANTIDAD	POS	CODIGO	DESCRIPCION	CANTIDAD
1	4401011501	JUNTAS ELEVADOR		16	4401011516	APOYO JUNTA	
2	4401011502	CODO Y BRIDA		17	4401011517	TAPA GUIA SUPERIOR	
3	4401010805	PELDAÑO SEGURIDAD 316		18	4401011518	ASIENTO	
4	4401010104	PELDAÑO LUXE 316		19	4401011519	CJTO. ENLACE UNION	
5	4401010501	TOPE ARTICULADO		20	4401011520	BRIDA APOYO	
6	4401011506	TOPE ARTICULADO D.28		21	4401011521	TUBO APOYO	
7	4401011507	PLACA ASIENTO		22	4401011505	CASQUILLO TOPE INFERIOR	
8	4401011508	VALVULA 3 VIAS COMPLETA		23	11277R0600	CILINDRO ELEVADOR HIDRAULICO	
9	4401011509	JUNTA ELEVADOR		24	11277R0400	SOPORTE ASIENTO	
10	4401070208	TAPON D.43		25	* 11277R0800	PASAMANO LARGO L=1000	
11	4401050402	CASQUILLOS GUIA		25	* 15219R0100	PASAMANO LARGO L=650	
12	4401011512	CASQUILLO DE SEGURIDAD		26	* 11277R0900	PASAMANO CORTO L=1000	
13	4401011513	CASQUILLO GUIA		26	* 15219R0200	PASAMANO CORTO L=650	

*** NOTA OBSERVACIONES**

CODIGO 11277, 15219, 28619, 28620, 28621, 28622

DESCRIPCION: ELEVADOR HIDRÁULICO

14	4401011514	TUBO ENTRADA 0,9 M	27	11277R0100	CONJUNTO TUBO GUIA
15	4401011515	SOPORTE VALVULA	28	00143	ANCLAJE FIJACION CON TORNILLOS

CODIGO **11277, 15219, 28619, 28620, 28621, 28622**

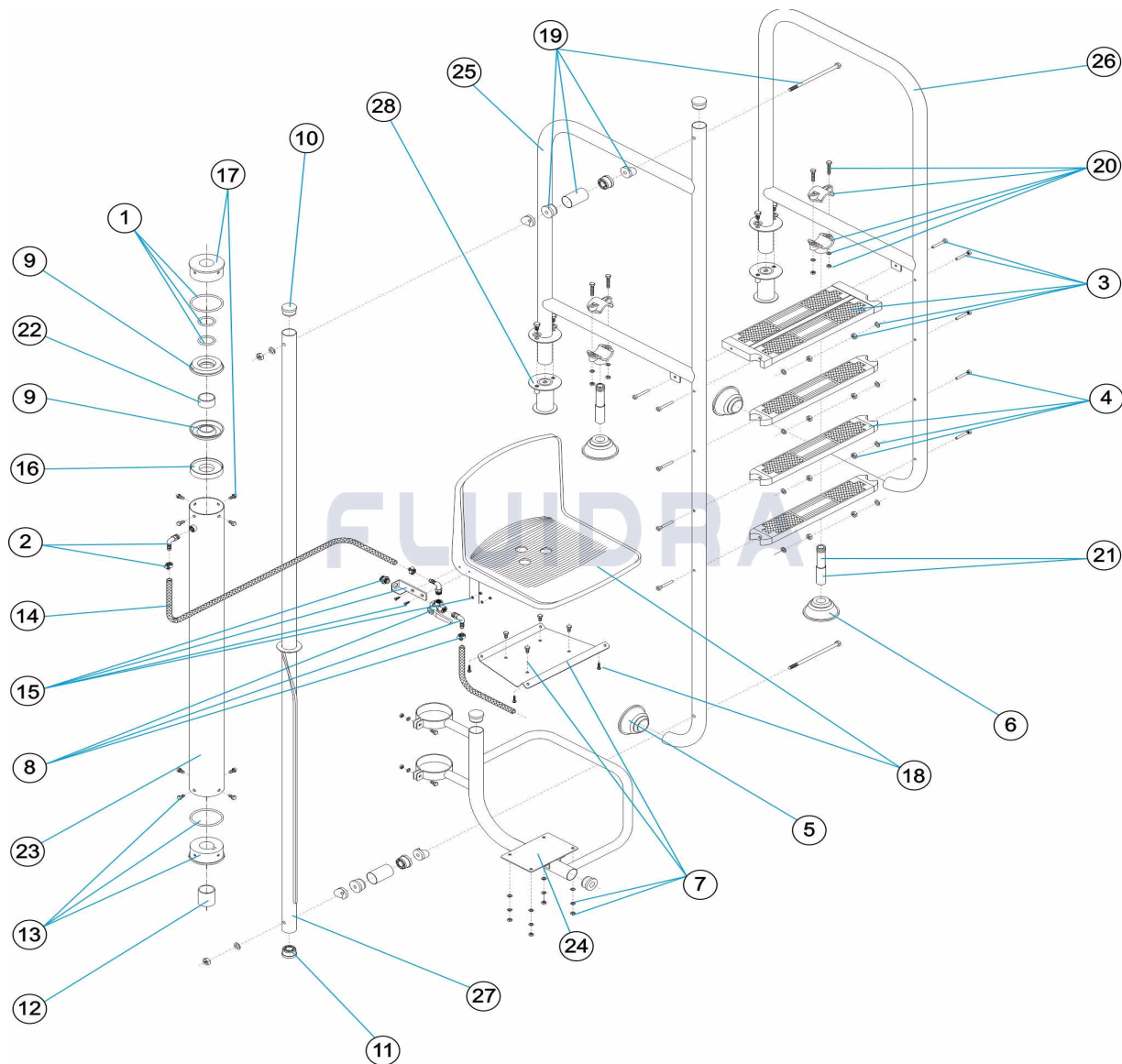
DESCRIPCION: ELEVADOR HIDRÁULICO

OBSERVACIONES

POS	CODIGO	OBSERVACIONES
25	* 11277R0800	PARA: 11277, 28620
25	* 15219R0100	PARA: 15219, 28619
26	* 11277R0900	PARA: 11277, 28620
26	* 15219R0200	PARA: 15219, 28619

CODE 11277, 15219, 28619, 28620, 28621, 28622

DESCRIPTION: ÉLÉVATEUR HYDRAULIQUE



FRANCAIS

POS	CODE	DESCRIPTION	QUANTITE	POS	CODE	DESCRIPTION	QUANTITE
1	4401011501	JOINT ELEVATEUR		16	4401011516	SUPPORT DE JOINT	
2	4401011502	COUDE ET BRIDE		17	4401011517	COUVERCLE GUIDE SUPERIEUR	
3	4401010805	MARCHE DE SECURITE AISI 316		18	4401011518	SEAT	
4	4401010104	MARCHE LUXE AISI 316		19	4401011519	ENSEMBLE RACCORD UNION	
5	4401010501	TAMPON ARTICULE		20	4401011520	BRIDE DE SUPPORT	
6	4401011506	TAMPON ARTICULE D 28		21	4401011521	TUBE DE SUPPORT	
7	4401011507	PLAQUE SUPPORT DE SIEGE		22	4401011505	DOUILLES	
8	4401011508	VANNE 3 VOIES COMPLETE		23	11277R0600	CYLINDRE ELEVATEUR	
9	4401011509	JOINT ELEVATEUR		24	11277R0400	PROTECTION SIÈGE	
10	4401070208	BOUCHON D.43		25	* 11277R0800	MAIN COURAGE LARGE L=1000	
11	4401050402	DOUILLES		25	* 15219R0100	MAIN COURAGE LARGE L=650	
12	4401011512	DOUILLE DE SECURITE		26	* 11277R0900	MAIN COURANTE COURTE L=1000	
13	4401011513	DOUILLE GUIDE		26	* 15219R0200	MAIN COURANTE COURTE L=650	

* VOIR FICHE D'OBSERVATIONS

CODE **11277, 15219, 28619, 28620, 28621, 28622**

DESCRIPTION: **ÉLÉVATEUR HYDRAULIQUE**

14	4401011514	TUBE ENTRÉE 0,9 M.	27	11277R0100	ENSEMBLE TUBE GUIDE
15	4401011515	SUPPORT VANNE	28	00143	FIXATION AVEC VIS

CODE **11277, 15219, 28619, 28620, 28621, 28622**

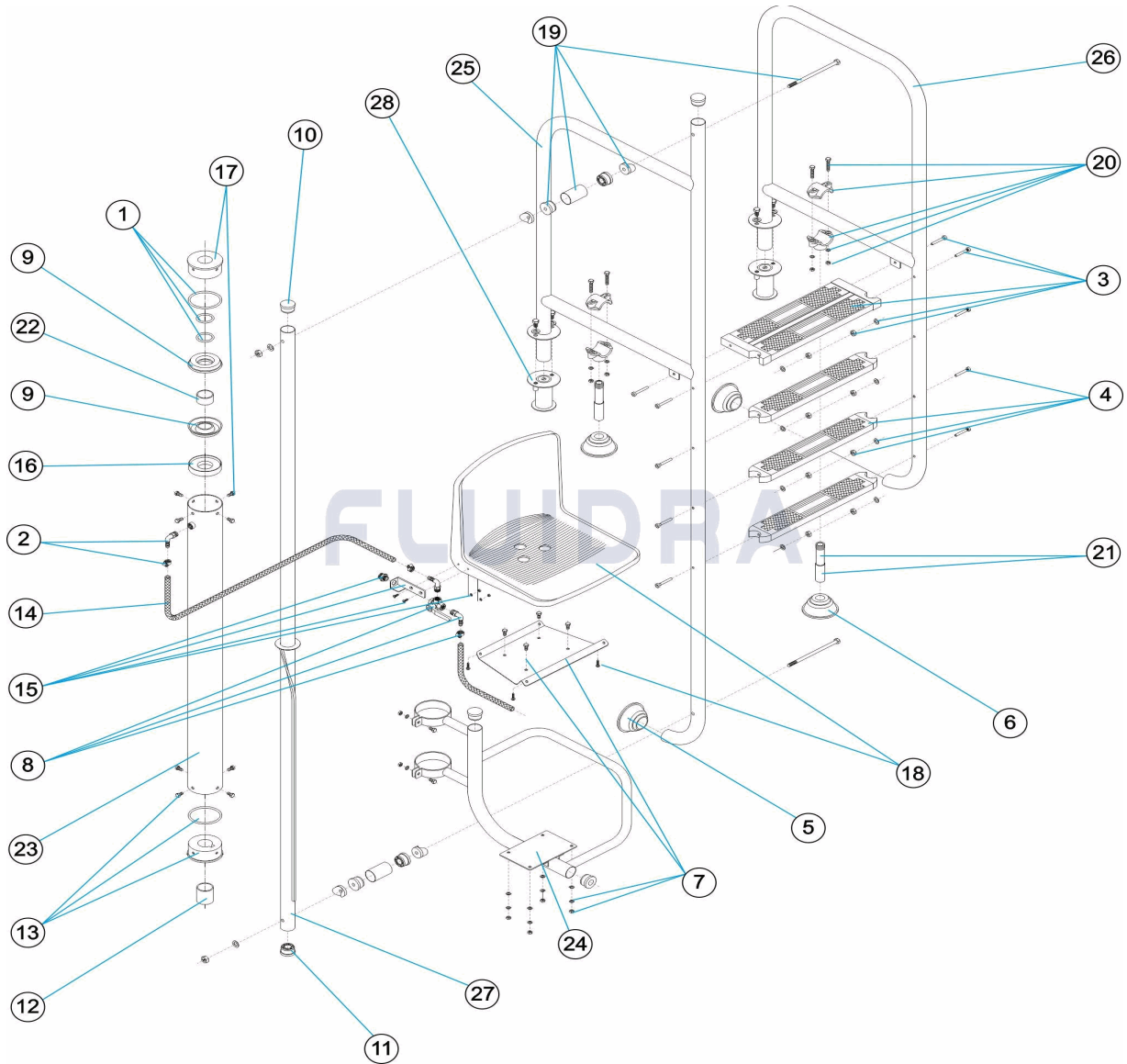
DESCRIPTION: **ÉLÉVATEUR HYDRAULIQUE**

OBSERVATIONS

POS	CODE	OBSERVATIONS
25	* 11277R0800	POUR: 11277, 28620
25	* 15219R0100	POUR: 15219, 28619
26	* 11277R0900	POUR: 11277, 28620
26	* 15219R0200	POUR: 15219, 28619

CODE 11277, 15219, 28619, 28620, 28621, 28622

DESCRIPTION: HYDRAULIC LIFT



ENGLISH

POS	CODE	DESCRIPTION	QUANTITY	POS	CODE	DESCRIPTION	QUANTITY
1	4401011501	LIFTER GASKETS		16	4401011516	SEAL SUPPORT	
2	4401011502	ELBOW AND FLANGE		17	4401011517	SUPERIOR GUIDE COVER	
3	4401010805	SAFETY TREAD 316		18	4401011518	SIÈGE	
4	4401010104	DELUXE TREAD 316		19	4401011519	UNION KIT	
5	4401010501	ARTICULATED FOOT PAD		20	4401011520	SUPPORT DASP	
6	4401011506	ARTICULATED FOOT PAD D 28		21	4401011521	SUPPORT PIPE	
7	4401011507	CHAIR PLATE		22	4401011505	SOCKETS	
8	4401011508	COMPLETE 3-WAY VALVE		23	11277R0600	HYDRAULIC CYLINDER TUBE	
9	4401011509	LIFTER GASKET		24	11277R0400	SEAT SUPPORT	
10	4401070208	PLUG D.43		25	* 11277R0800	LARGE HANDRAIL L=1000	
11	4401050402	BUSHES		25	* 15219R0100	LARGE HANDRAIL L=650	
12	4401011512	SECURITY SOCKET		26	* 11277R0900	SMALL HANDRAIL L=1000	
13	4401011513	GUIDE SOCKET		26	* 15219R0200	SMALL HANDRAIL L=650	

* SEE OBSERVATIONS SHEET

CODE **11277, 15219, 28619, 28620, 28621, 28622**

DESCRIPTION: **HYDRAULIC LIFT**

14	4401011514	PIPE 0,9 M.	27	11277R0100	MECHANICAL TUBE
15	4401011515	VALVE SUPPORT	28	00143	ANCHORING WITH SCREWS

CODE **11277, 15219, 28619, 28620, 28621, 28622**

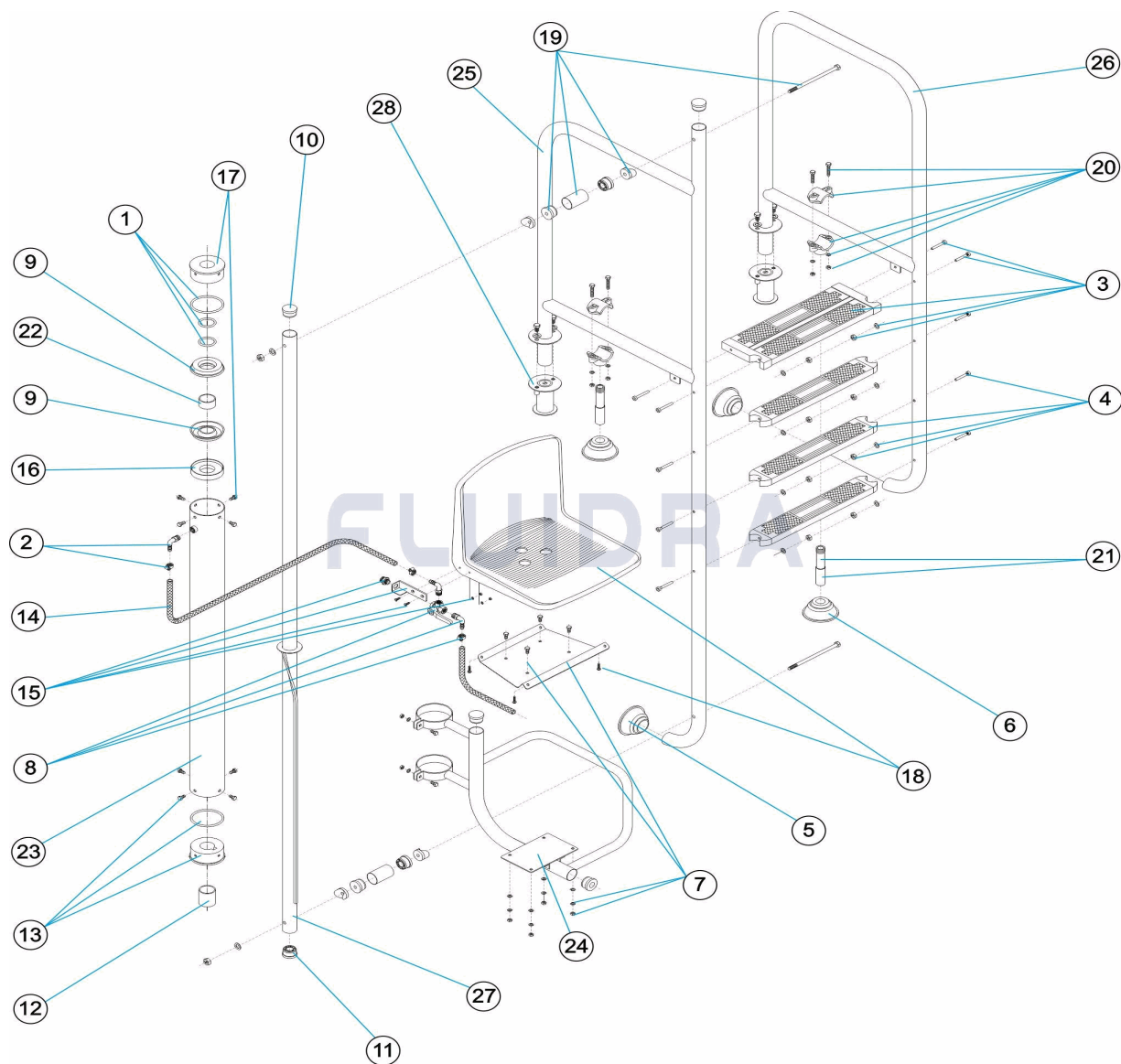
DESCRIPTION: **HYDRAULIC LIFT**

OBSERVATIONS

POS	CODE	OBSERVATIONS
25	* 11277R0800	FOR: 11277, 28620
25	* 15219R0100	FOR: 15219, 28619
26	* 11277R0900	FOR: 11277, 28620
26	* 15219R0200	FOR: 15219, 28619

CODICE 11277, 15219, 28619, 28620, 28621, 28622

DESCRIZIONE: ELEVATORE IDRAULICO



ITALIANO

POS	CODICE	DESCRIZIONE	QUANTITA'	POS	CODICE	DESCRIZIONE	QUANTITA'
1	4401011501	GUARNIZIONI SOLLEVATORE		16	4401011516	SUPPORTO GUARNIZIONE	
2	4401011502	GOMITO E FLANGIA		17	4401011517	TAPPO GUIDA SUPERIORE	
3	4401010805	GRADINO DI SICUREZZA AISI 316		18	4401011518	SEIDA	
4	4401010104	GRADINO LUXE AISI 316		19	4401011519	KIT ATTACO SEIDA	
5	4401010501	PIEDINO SNODABILE		20	4401011520	PRESA A STAFFA SOSTEGNO	
6	4401011506	PIEDINO SNODABILE D 28		21	4401011521	TUBO SOSTEGNO	
7	4401011507	PIASTRA SEGGIOLA		22	4401011505	PASSANTI	
8	4401011508	VALVOLA A 3 VIE COMPLETA		23	11277R0600	CILINDRO ELEVATORE	
9	4401011509	GUARNIZIONE SOLLEVATORE		24	11277R0400	SOSTEGNO SEDILE	
10	4401070208	TAPPO D.43		25	* 11277R0800	CORRIMANO LUNGO L=1000	
11	4401050402	PASSANTI		25	* 15219R0100	CORRIMANO LUNGO L=650	
12	4401011512	TAPPO DI SICUREZZA		26	* 11277R0900	CORRIMANO CORTO L=1000	
13	4401011513	TAPPO CON GUIDA		26	* 15219R0200	CORRIMANO CORTO L=650	

* SI FACCIA RIFERIMENTO AL FOGLIO DELLE OSSERVAZIONI

CODICE **11277, 15219, 28619, 28620, 28621, 28622**

DESCRIZIONE: **ELEVATORE IDRAULICO**

14	4401011514	TUBO ENTRATA 0,9 M.	27	11277R0100	KIT CILINDRO GUIDA
15	4401011515	SUPPORTO VALVOLA	28	00143	ANCORAGGIO DI FISSAGGIO CON VITI

CODICE **11277, 15219, 28619, 28620, 28621, 28622**

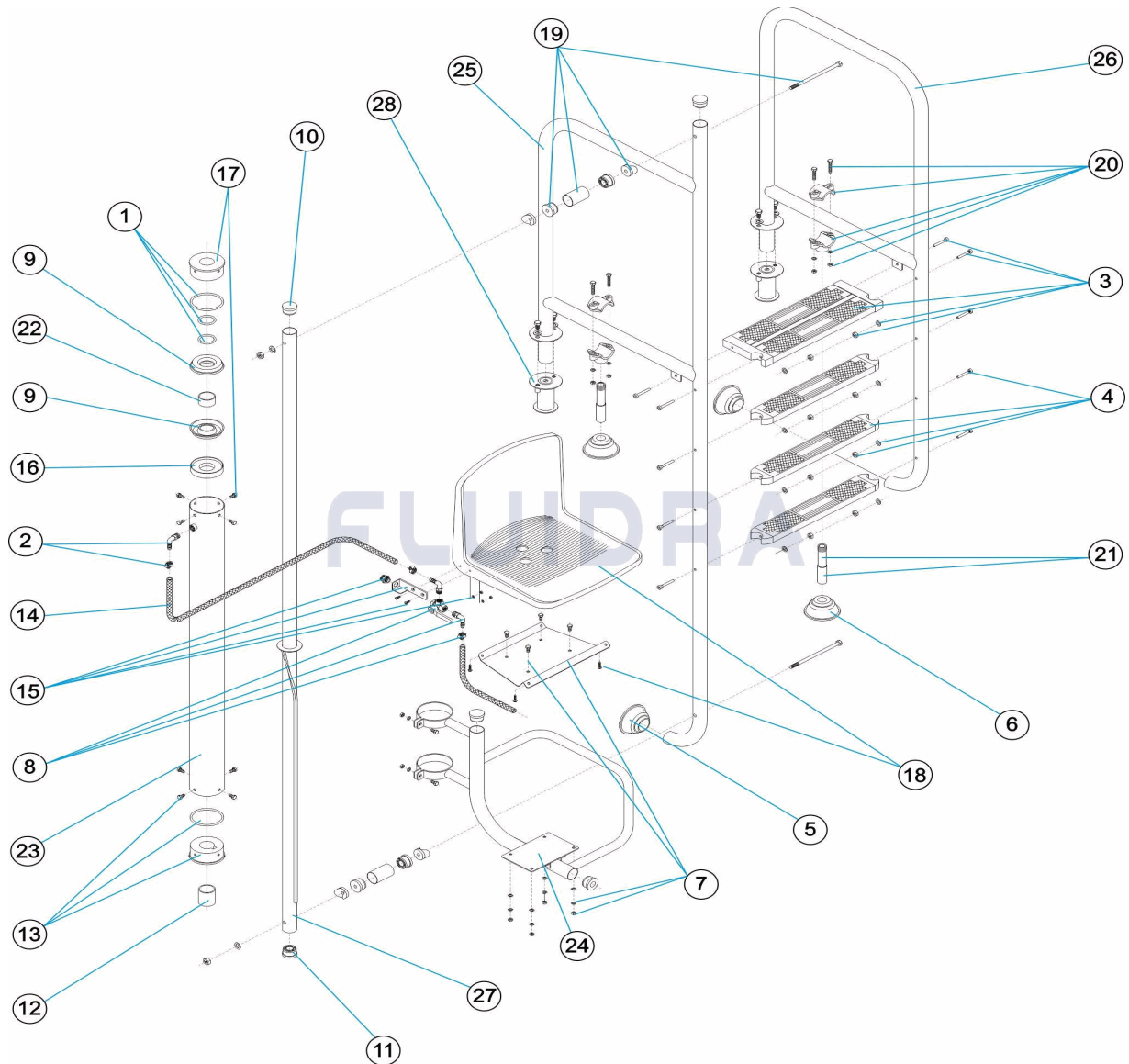
DESCRIZIONE: **ELEVATORE IDRAULICO**

OSSERVAZIONI

POS	CODICE	OSSERVAZIONI
25	* 11277R0800	PER: 11277, 28620
25	* 15219R0100	PER: 15219, 28619
26	* 11277R0900	PER: 11277, 28620
26	* 15219R0200	PER: 15219, 28619

CODE 11277, 15219, 28619, 28620, 28621, 28622

BESCHREIBUNG: HYDRAULISCHER LIFTER



DEUTSCH

POS	CODE	BESCHREIBUNG	MENGE	POS	CODE	BESCHREIBUNG	MENGE
1	4401011501	DICHTUNGEN LIFT		16	4401011516	HALTERUNG DICHTUNG	
2	4401011502	WINKEL UND FLANSCH		17	4401011517	ABDECKUNG FÜHRUNG OBEN	
3	4401010805	SICHERHEITSSSTUFE 316		18	4401011518	SITZ	
4	4401010104	STUFE LUXE 316		19	4401011519	SET ANSCHLUSSEVERBINDUNG	
5	4401010501	BEWEGLICHER ABSCHLUSS		20	4401011520	HILFSFLANSCH	
6	4401011506	BEWEGLICHER ABSCHLUSS D. 28		21	4401011521	HILFSROHR	
7	4401011507	PLATINE SITZ		22	4401011505	FASSUNG ABSCHLUSS UNTEN	
8	4401011508	3-WEGE-VENTIL KOMPLETT		23	11277R0600	ZYLINDER LIFT HYDRAULISCH	
9	4401011509	DICHTUNG LIFT		24	11277R0400	HALTERUNG SITZ	
10	4401070208	STOPFEN D.43		25	* 11277R0800	HANDLAUF LANG L=1000	
11	4401050402	FASSUNGEN FÜHRUNG		25	* 15219R0100	HANDLAUF LANG L=650	
12	4401011512	SICHERHEITSSFASSUNG		26	* 11277R0900	HANDLAUF KURZ L=1000	
13	4401011513	FASSUNG FÜHRUNG		26	* 15219R0200	HANDLAUF KURZ L=650	

* SIEHE ANMERKUNGSBLATT

CODE **11277, 15219, 28619, 28620, 28621, 28622**

BESCHREIBUNG: **HYDRAULISCHER LIFTER**

14	4401011514	ROHR EINGANG 0,9 M	27	11277R0100	SET FÜHRUNGSROHR
15	4401011515	HALTERUNG VENTIL	28	00143	VERANKERUNG FIXIERUNG MIT SCHRAUB

CODE **11277, 15219, 28619, 28620, 28621, 28622**

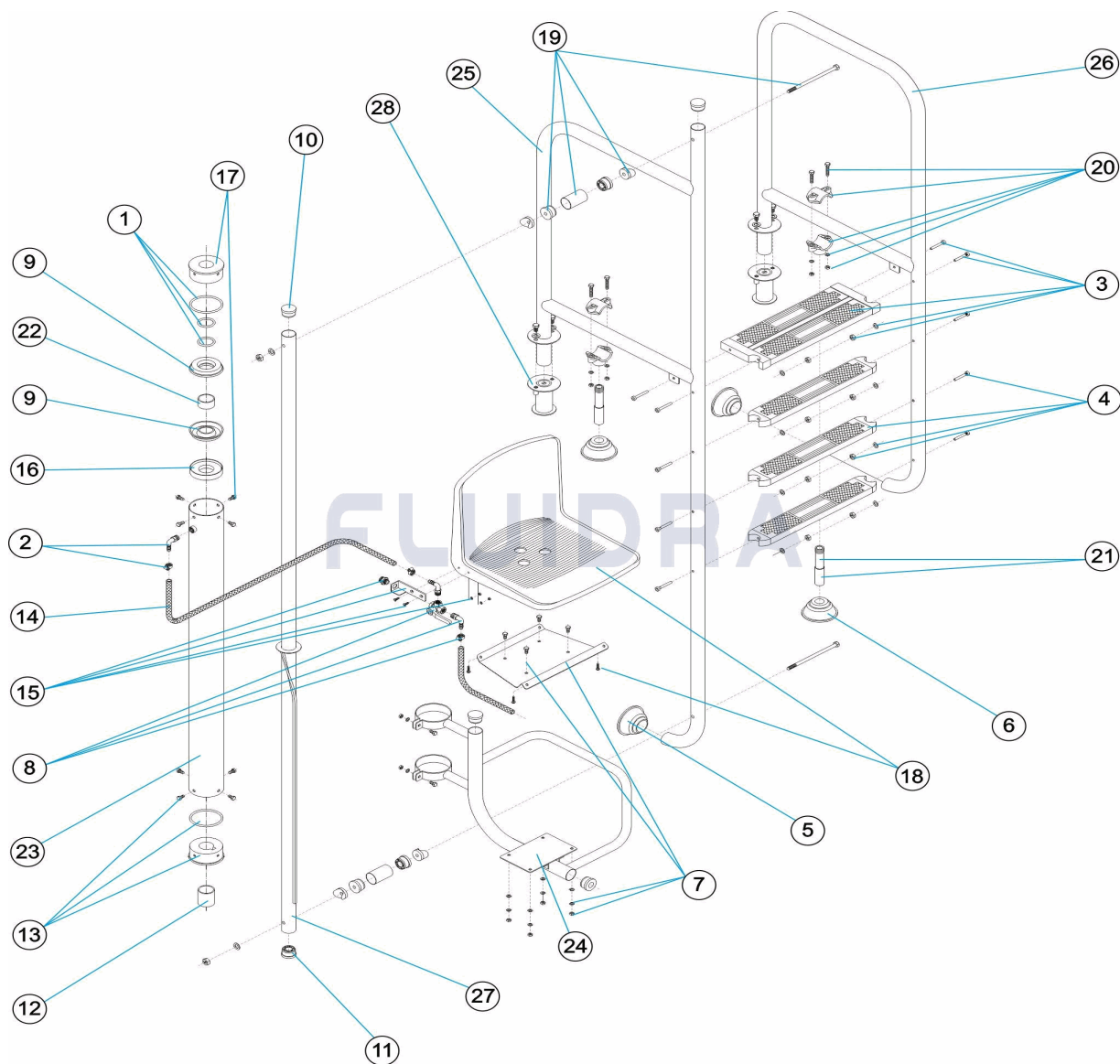
BESCHREIBUNG: **HYDRAULISCHER LIFTER**

HINWEISE

POS	CODE	HINWEISE
25	* 11277R0800	FÜR: 11277, 28620
25	* 15219R0100	FÜR: 15219, 28619
26	* 11277R0900	FÜR: 11277, 28620
26	* 15219R0200	FÜR: 15219, 28619

CODIGO 11277, 15219, 28619, 28620, 28621, 28622

DESCRICAÇÃO: ELEVADOR HIDRÁULICO



PORTUGUES

POS	CODIGO	DESCRICAÇÃO	JANTIDADE	POS	CODIGO	DESCRICAÇÃO	JANTIDADE
1	4401011501	JUNTAS ELEVADOR		16	4401011516	APOIO JUNTA	
2	4401011502	COTOBELO E FLANGE		17	4401011517	TAMPA GUIA SUPERIOR	
3	4401010805	DEGRAU SEGURANÇA 316		18	4401011518	CADEIRA	
4	4401010104	DEGRAU LUXE 316		19	4401011519	CONJUNTO UNIÃO LIGAÇÃO	
5	4401010501	BATENTE ARTICULADA		20	4401011520	ABRACADEIRA DE APOIO	
6	4401011506	BATENTE ARTICULADA D 28		21	4401011521	TUBO DE APOIO	
7	4401011507	PLACA ASSENTO		22	4401011505	CASQUILHOS	
8	4401011508	VALVULA 3 VIAS COMPLETA		23	11277R0600	CILINDRO ELEVADOR	
9	4401011509	JUNTA ELEVADOR		24	11277R0400	SUPORTE ASSENTO	
10	4401070208	TAMPÃO D.43		25	* 11277R0800	CORRIMÃO COMPRIDO L=1000	
11	4401050402	CONJ. CASQUILHOS		25	* 15219R0100	CORRIMÃO COMPRIDO L=650	
12	4401011512	CASQUILHO DE SEGURANÇA		26	* 11277R0900	CORRIMÃO CURTO L=1000	
13	4401011513	CASQUILHO GUIA		26	* 15219R0200	CORRIMÃO CURTO L=650	

*** VEJA A FICHA DE OBSERVAÇÕES**

CODIGO **11277, 15219, 28619, 28620, 28621, 28622**

DESCRIÇÃO: **ELEVADOR HIDRÁULICO**

14	4401011514	TUBO ENTRADA 0,9 M.	27	11277R0100	CONJUNTO TUBO GUÍA
15	4401011515	SUPORTE VÁLVULA	28	00143	ANCORAGEM FIXAÇÃO COM PARAFUSOS

CODIGO **11277, 15219, 28619, 28620, 28621, 28622**

DESCRIÇÃO: ELEVADOR HIDRÁULICO

OBSERVAÇÕES

POS	CODIGO	OBSERVAÇÕES
25	* 11277R0800	PARA: 11277, 28620
25	* 15219R0100	PARA: 15219, 28619
26	* 11277R0900	PARA: 11277, 28620
26	* 15219R0200	PARA: 15219, 28619