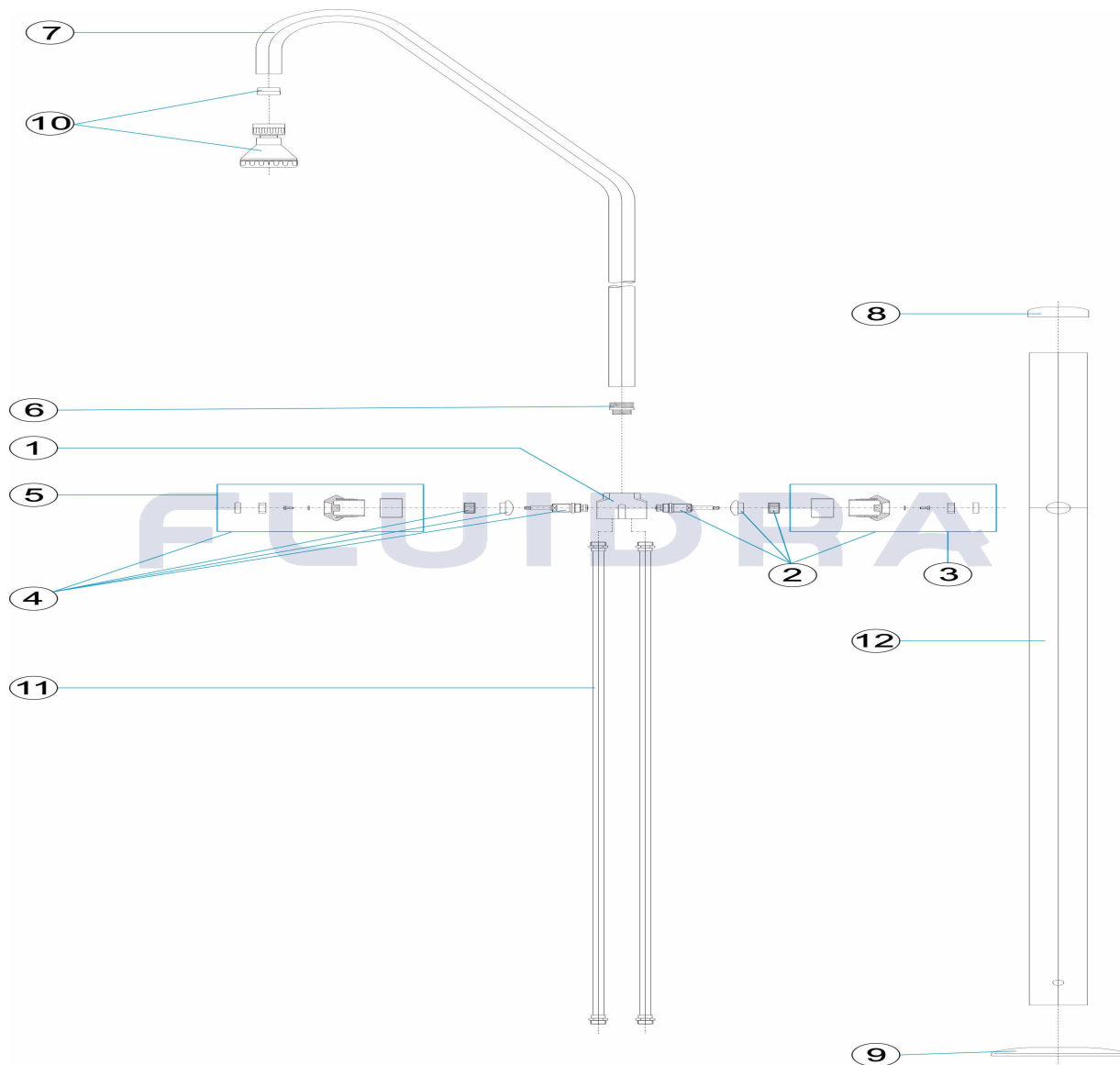


CODIGO **00096**

DESCRIPCION: **DUCHA 1 ROCIADOR Y 2 VALVULAS AGUA FRIA Y CALIENTE TUBO D. 63**

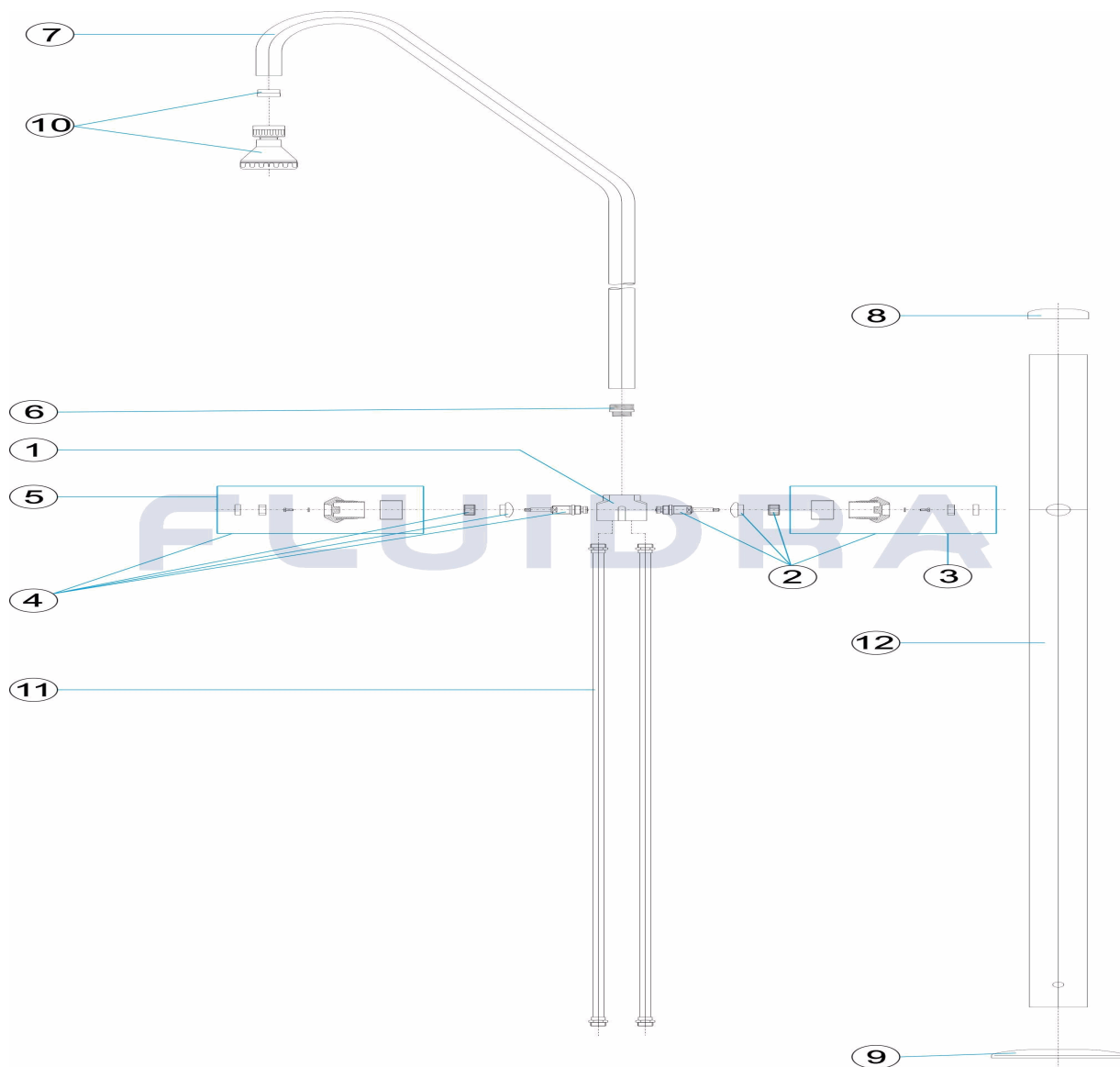


ESPAÑOL

POS	CODIGO	DESCRIPCION	CANTIDAD	POS	CODIGO	DESCRIPCION	CANTIDAD
1	4401040601	COLECTOR 2 VIAS 1 ROCIADOR		7	4401040105	BRAZO DUCHA	
2	4401040610	POMO PLASTICO AGUA FRIA CON ADAPTA		8	4401040506	TAPETA EMBELLECEDORA SUPERIOR 63	
3	4401040603	POMO PLASTICO AGUA FRIA		9	4401040507	TAPETA EMBELLECEDORA INFERIOR	
4	4401040604	POMO PLASTICO AGUA CALIENTE		10	4401040104	PIÑA DUCHA	
5	4401040605	POMO PLASTICO AGUA CALIENTE		11	4401040028	TUBO 3/8"	
6	4401040503	MACHON 3/4"-1/2'		12	00096R0001	TUBO EXTERIOR 63	

CODE **00096**

DESCRIPTION: **DOUCHE 1 POMMEAU ET 2 ROBINETS EAU FROIDE ET CHAUDE TUBE D.**

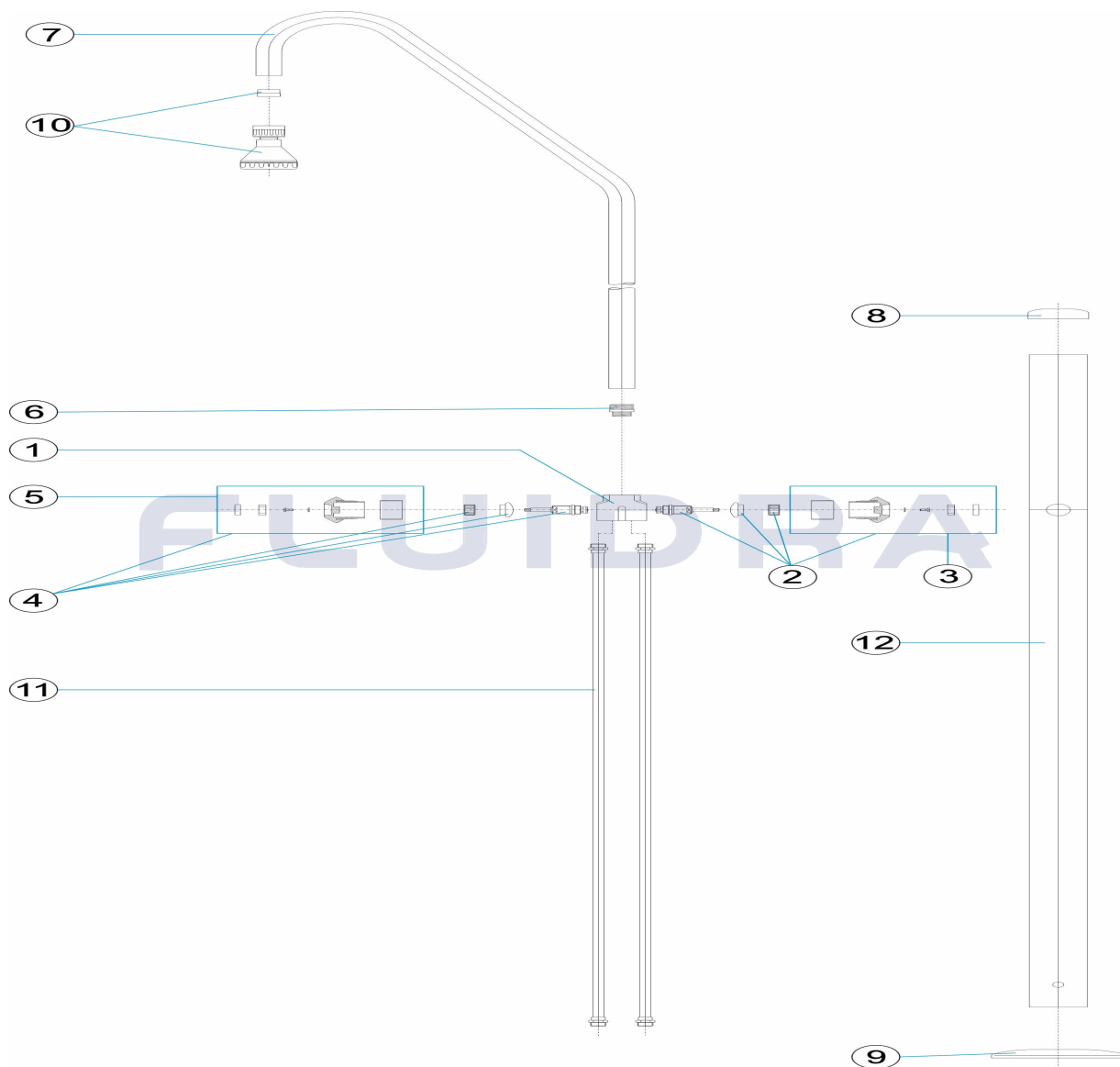


FRANCAIS

POS	CODE	DESCRIPTION	QUANTITE	POS	CODE	DESCRIPTION	QUANTITE
1	4401040601	MELANGEUR EAU CHAUDE EAU FROIDE		7	4401040105	BRAS DE DOUCHE	
2	4401040610	ROBINET PLASTIQUE EAU FROIDE AVEC A		8	4401040506	ENJOLIVEUR SUPERIEUR 63	
3	4401040603	ROBINET PLASTIQUE D'EAU FROIDE		9	4401040507	ENJOLIEVEUR INFERIEUR	
4	4401040604	ROBINET PLASTIQUE D'EAU CHAUDE		10	4401040104	POMMEAU DE DOUCHE	
5	4401040605	ROBINET PLASTIQUE D'EAU CHAUDE		11	4401040028	TUBE 3/8'	
6	4401040503	MANCHON 1/4-'		12	00096R0001	TUBE EXTERIEUR D.63	

CODE **00096**

DESCRIPTION: **SHOWER 1 SHOWER HEAD AND 2 VALVES COLD AND HOT WATER D.63 P**

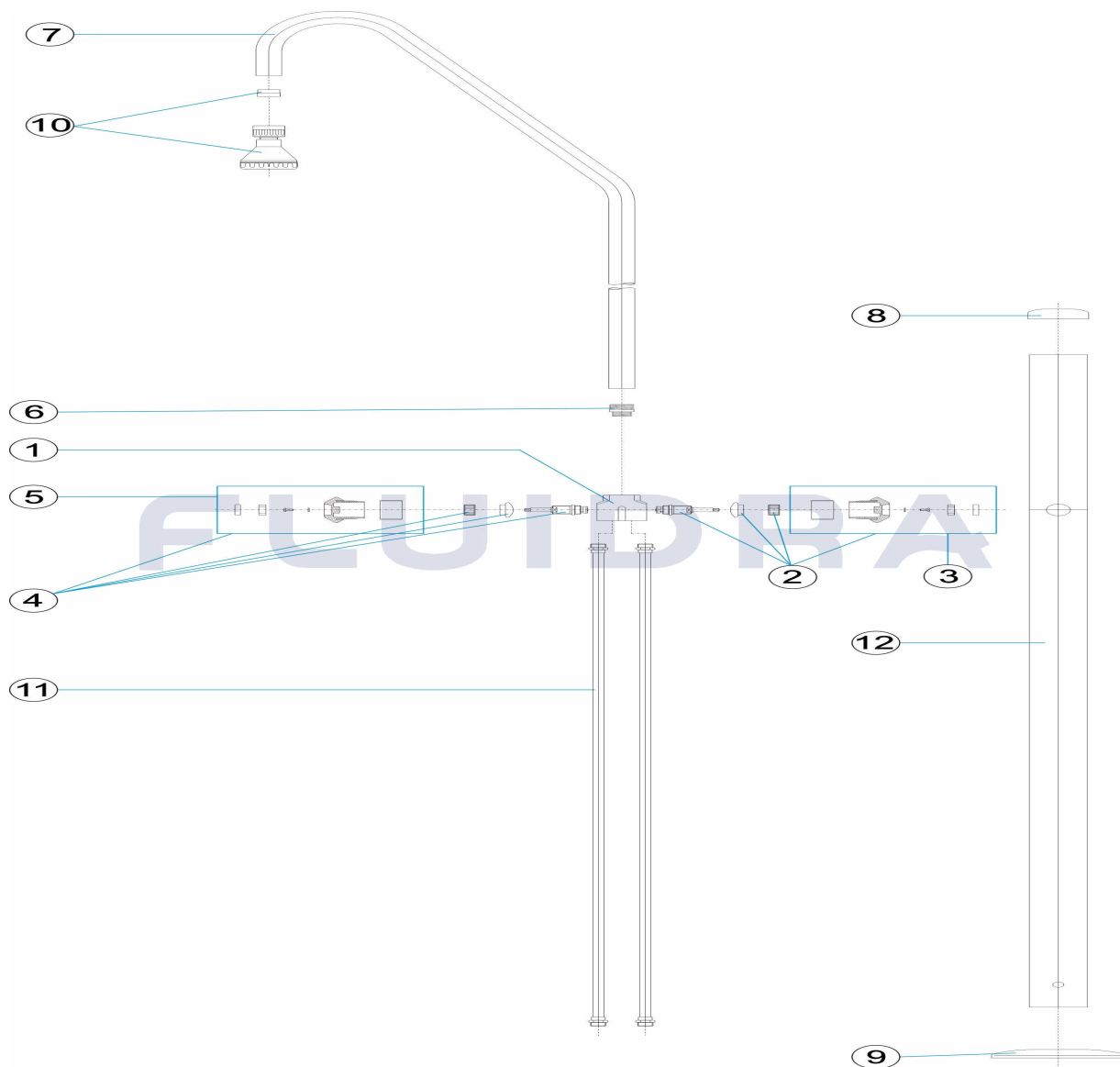


ENGLISH

POS	CODE	DESCRIPTION	QUANTITY	POS	CODE	DESCRIPTION	QUANTITY
1	4401040601	2 WAY 1 SHOWER MANIFOLD		7	4401040105	SHOWER ARM	
2	4401040610	COLD WATER PLASTIC KNOB WITH ADAPT		8	4401040506	TOP ESCUTCHEON PLATE 63	
3	4401040603	PLASTIC COLD WATER VALVE HANDLE		9	4401040507	BOTTOM ESCUTCHEON PLATE	
4	4401040604	PLASTIC HOT WATER VALVE HANDLE		10	4401040104	SHOWER HEAD	
5	4401040605	PLASTIC HOT WATER VALVE HANDLE		11	4401040028	3/8" PIPE	
6	4401040503	3/4"-1/2" SPIGOT		12	00096R0001	TUBE EXTERNAL 63MM	

CODICE **00096**

DESCRIZIONE: **DOCCIA 1 SPRUZZATORE E 2 VALVOLE ACQUA FREDDA E CALDA TUBO D**

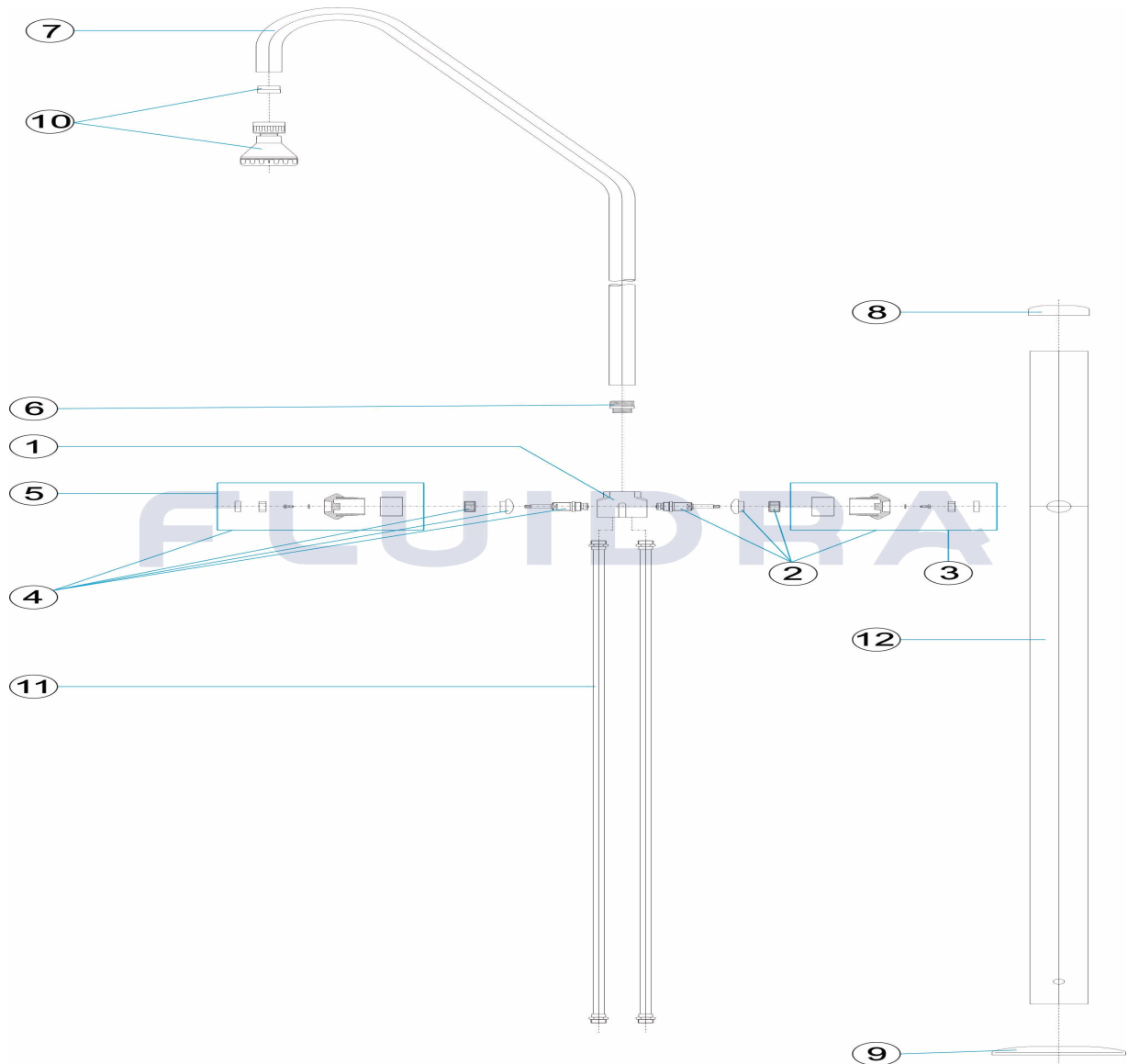


ITALIANO

POS	CODICE	DESCRIZIONE	QUANTITA'	POS	CODICE	DESCRIZIONE	QUANTITA'
1	4401040601	COLLETTORE 2 VIE 1 SOFFIONE		7	4401040105	BRACCIO DOCCIA	
2	4401040610	POMO IN PLASTICA ACQUA FREDDA CON .		8	4401040506	COPRIFLANGIA 63	
3	4401040603	POMELLO IN PLASTICA ACQUA FREDDA		9	4401040507	COPRIFLANGIA INFERIORE	
4	4401040604	POMELLO IN PLASTICA ACQUA CALDA		10	4401040104	DIFFUSORE DOCCIA	
5	4401040605	POMELLO IN PLASTICA ACQUA CALDA		11	4401040028	TUBO 3/8'	
6	4401040503	NIPPLIO 3/4" - 1		12	00096R0001	TUBO ESTERNO D.63	

CODE **00096**

BESCHREIBUNG: **DUSCHE 1 DUSCHKOPF UND 2 VENTILE KALT- UND WARMWASSER RO**

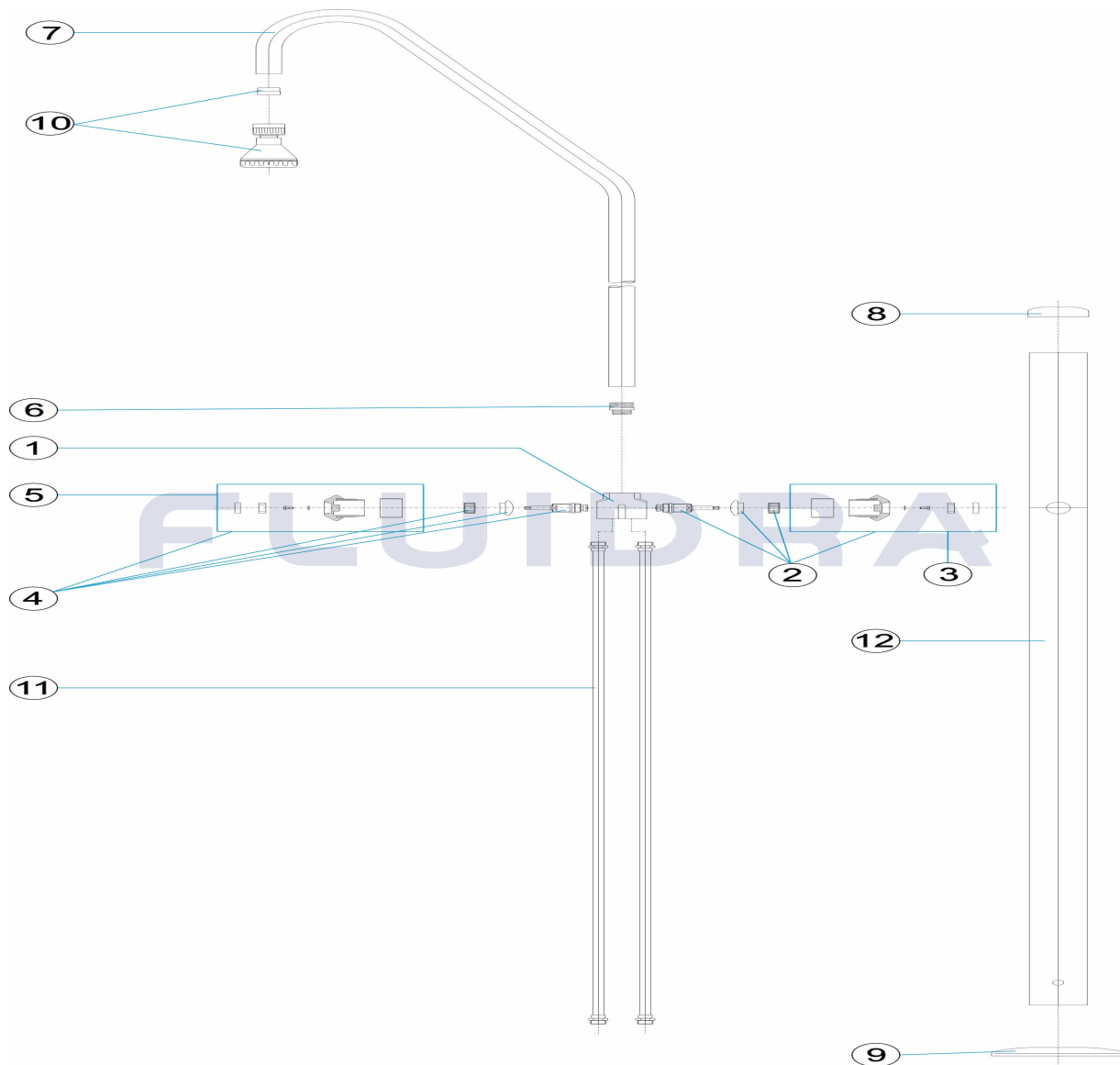


DEUTSCH

POS	CODE	BESCHREIBUNG	MENGE	POS	CODE	BESCHREIBUNG	MENGE
1	4401040601	2-WEGE-SAMMELROHR 1 DUSCHKOPF	7	4401040105	DUSCHARM		
2	4401040610	DREHGRIFF KUNSTSTOFF KALTWASSER I	8	4401040506	DEKO-ABSCHLUSSRING OBEN 63		
3	4401040603	DREHGRIFF KUNSTSTOFF KALTWASSER	9	4401040507	DEKO-ABSCHLUSSRING UNTEN		
4	4401040604	DREHGRIFF KUNSTSTOFF WARMWASSER	10	4401040104	DUSCHKOPF		
5	4401040605	DREHGRIFF KUNSTSTOFF WARMWASSER	11	4401040028	ROHR 3/8"		
6	4401040503	SCHRAUBTEIL 3/4' - 1/2'	12	00096R0001	AUSSENROHR 63		

CODIGO **00096**

DESCRIÇÃO: **DUCHE 1 DIFUSOR 2 VÁLVULAS ÁGUA FRIA E QUENTE TUBO D. 63**



PORTUGUES

POS	CODIGO	DESCRIÇÃO	JANTIDADE	POS	CODIGO	DESCRIÇÃO	JANTIDADE
1	4401040601	COLECTOR 2 VIAS 1 REGADOR		7	4401040105	BRAÇO CHUVEIRO	
2	4401040610	MANIPULO PLÁSTICO ÁGUA COM ADAPTA		8	4401040506	ANTIDERRAPANTE	
3	4401040603	MANIPULO PLÁSTICO ÁGUA FRIA		9	4401040507	TAMPA EMBELEZADORA INFERIOR	
4	4401040604	MANIPULO PLÁSTICO ÁGUA QUENTE		10	4401040104	REGADOR CHUVEIRO	
5	4401040605	MANIPULO PLÁSTICO ÁGUA QUENTE		11	4401040028	TUBO 3/8"	
6	4401040503	MACHO 3/4"		12	00096R0001	TUBO EXTERIOR 63	