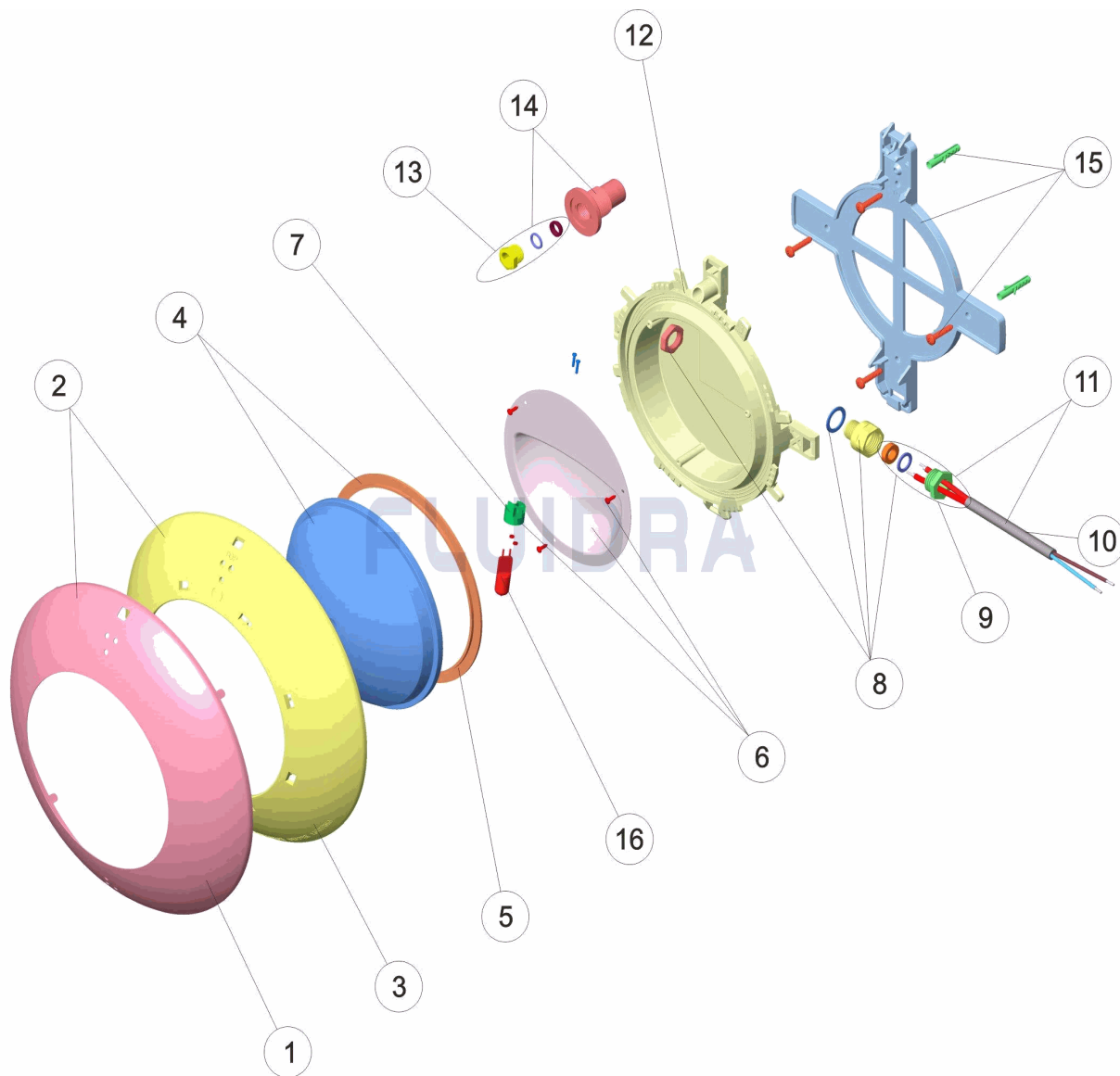


CODIGO **21626, 35666**

DESCRIPCION: **PROYECTOR EXTRA PLANO PISC. HORMIGON**



ESPAÑOL

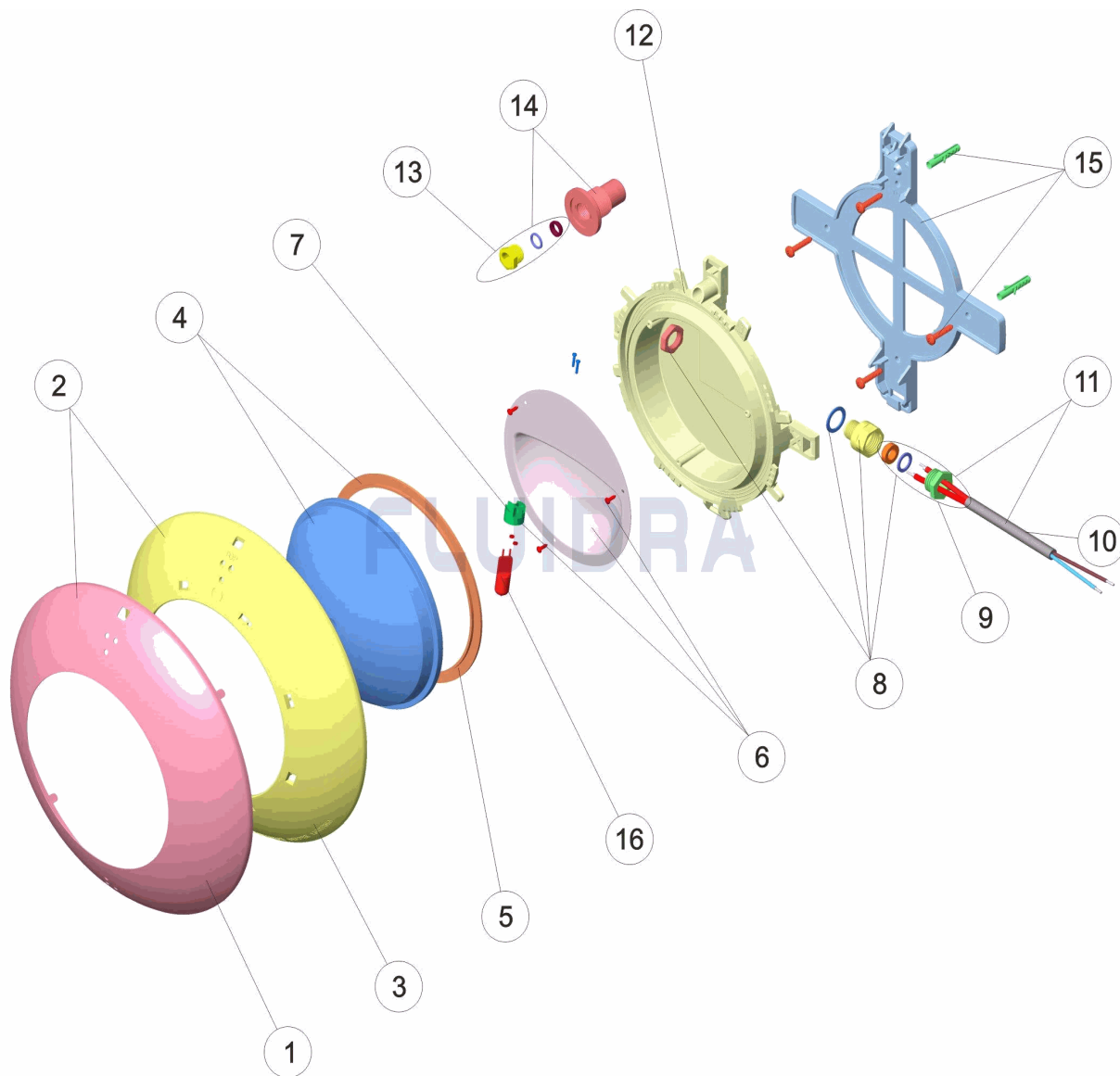
POS	CODIGO	DESCRIPCION	CANTIDAD	POS	CODIGO	DESCRIPCION	CANTIDAD
1	* 4403012304	EMBELLECEDOR INOX PROYECTOR EXTR		9	4403010076	CJTO. TAPON PRENSAESTOPAS	
2	* 4403012301	CJTO.EMBELLECED.INOX PROJEC.EXTRA		10	4403011905	CABLE PROYECTOR	
3	* 4403011901	EMBELLECEDOR PROYECTOR PLANO		11	4403015405	CABLE PROYECTOR, PRENSAESTOPAS	
4	4403012303	LENTE TRANSPARENTE + JUNTA		12	4403011908	CUERPO PROYECTOR	
5	4403010102	JUNTA SILICONA PROYECTOR		13	4403011405	PRENSAESTOPAS PROYECTOR DICROICO	
6	4403011903	REFLECTOR PORTALAMPARAS		14	4403011907	PASACABLES	
7	4403011407	PORTALAMPARAS		15	4403011906	SOPORTE PROYECTOR	
8	4403012302	CJTO. PRENSAESTOPAS M-16 KT 19,5X2		16	00371	LAMPARA HALOGENA 12 V. 100 W.	

CODIGO **21626, 35666**DESCRIPCION: **PROYECTOR EXTRA PLANO PISC. HORMIGON****OBSERVACIONES**

POS	CODIGO	OBSERVACIONES
1	* 4403012304	PARA: 35666
2	* 4403012301	PARA: 35666
3	* 4403011901	PARA: 21626

CODE 21626, 35666

DESCRIPTION: PROJECTEUR EXTRA-PLAT PISC. BÉTON



FRANCAIS

POS	CODE	DESCRIPTION	QUANTITE	POS	CODE	DESCRIPTION	QUANTITE
1	* 4403012304	ANNEAU ENJOLIVER INOX		9	4403010076	ENSEMBLE BOUCHON PRESSE-ETOUPE	
2	* 4403012301	ENSEMBLE ANNEAU ENJOLIVER INOX		10	4403011905	CABLE DE PROJECTEUR	
3	* 4403011901	ENJOLIVEUR PROJECTEUR PLAT		11	4403015405	CABLE PROJECTEUR PRESSE ÉTOUPE	
4	4403012303	LENTE PROJECTEUR + JOINT		12	4403011908	CORPS DU PROJECTEUR	
5	4403010102	JOINT SILICONE PROJECTEUR		13	4403011405	PRESSE-ÉTOUPE ET JOINT PROJ. DICHRO	
6	4403011903	REFLECTEUR PORTE LAMPE		14	4403011907	PASSE CABLE	
7	4403011407	PORTE-LAMPE		15	4403011906	SUPPORT PROJECTEUR	
8	4403012302	ENSEMBLE PRESSE ÉTOUPE M-16 KT 19,€		16	00371	LAMPE 12 V. 100 W.	

CODE **21626, 35666**

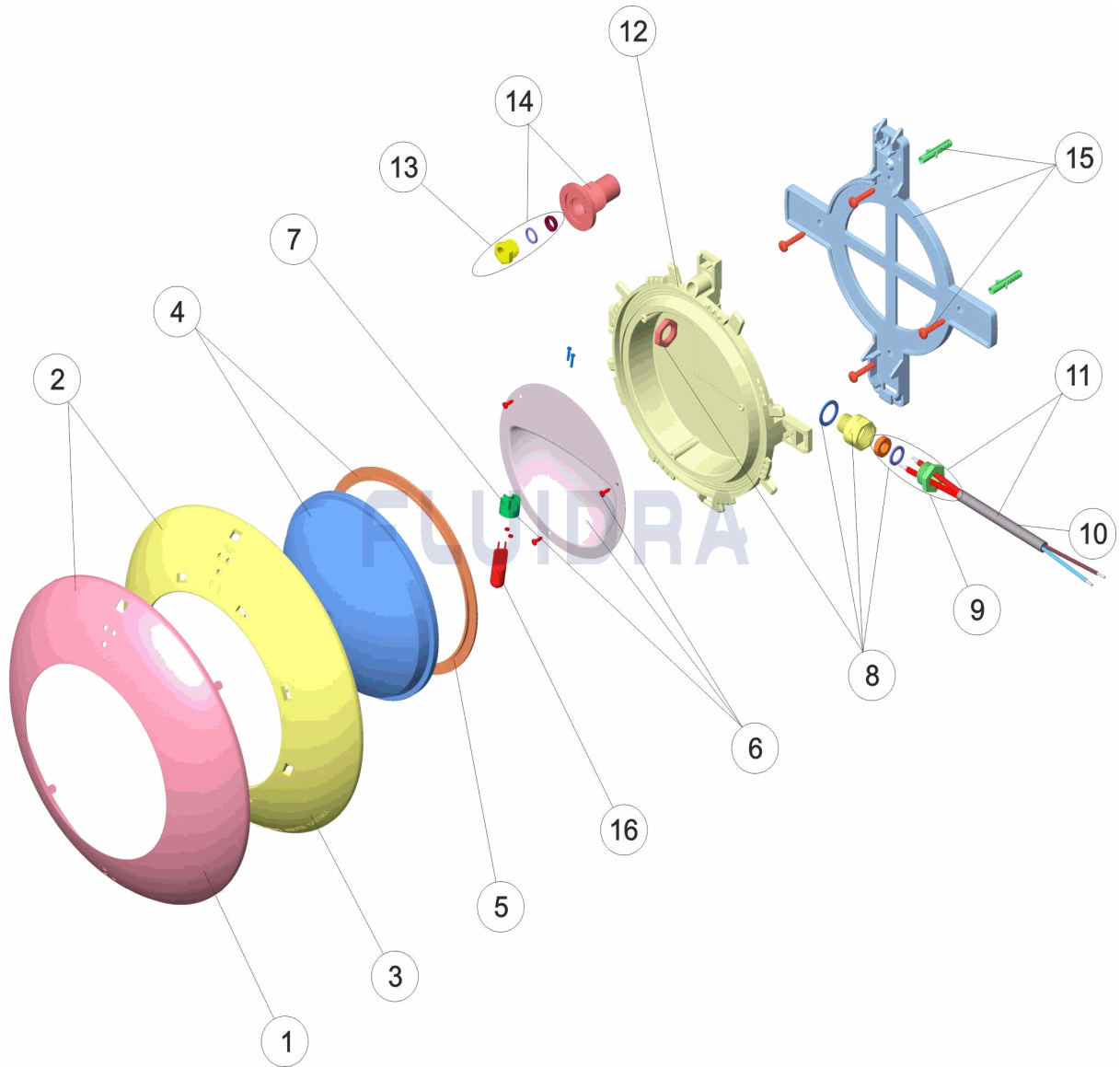
DESCRIPTION: **PROJECTEUR EXTRA-PLAT PISC. BÉTON**

OBSERVATIONS

POS	CODE	OBSERVATIONS
1	* 4403012304	POUR: 35666
2	* 4403012301	POUR: 35666
3	* 4403011901	POUR: 21626

CODE **21626, 35666**

DESCRIPTION: **EXTRA-FLAT LIGHT CONCRETE POOL**



ENGLISH

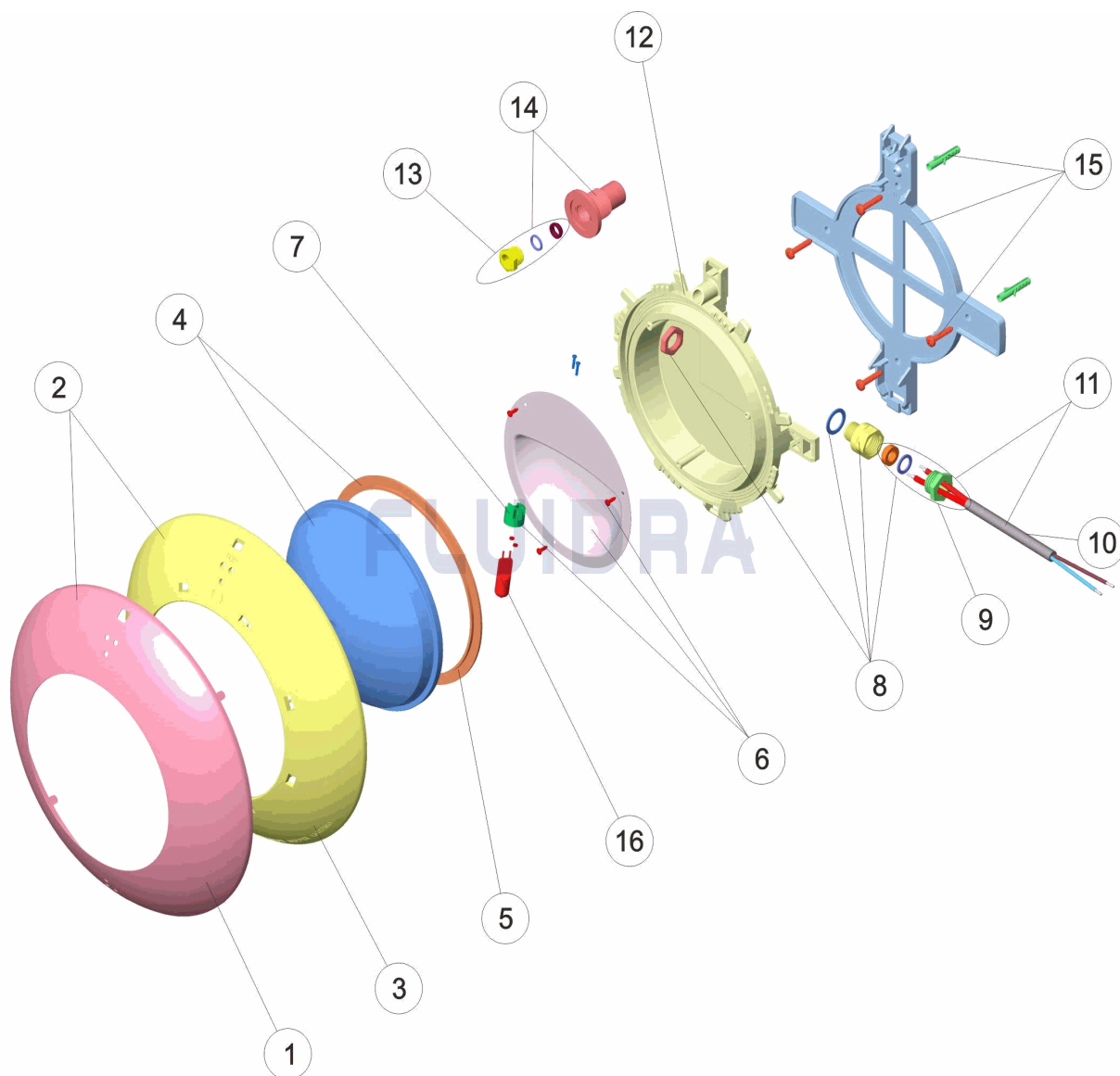
POS	CODE	DESCRIPTION	QUANTITY	POS	CODE	DESCRIPTION	QUANTITY
1	* 4403012304	RUSTPROOF DECORATIVE RING		9	4403010076	PACKING GLAND ASSEMBLY	
2	* 4403012301	SET RUSTPROOF DECORATIVE RING		10	4403011905	LIGHT CABLE	
3	* 4403011901	FLAT LIGHT FACEPLATE		11	4403015405	PROJECTOR CABLE, PACKING GLANDS PR	
4	4403012303	CLEAR LENS + GASKET		12	4403011908	LIGHT BODY	
5	4403010102	LIGHT SILICON GASKET		13	4403011405	PACKING GLAND	
6	4403011903	LAMPHOLDER REFLECTOR PLATE		14	4403011907	CONDUIT CONNECTOR	
7	4403011407	LAMP HOLDER		15	4403011906	LIGHT SUPPORT	
8	4403012302	GLAND SEAL M-16 KT 19,5X2		16	00371	LIGHTBULB 12 V. 100 W.	

CODE **21626, 35666**DESCRIPTION: **EXTRA-FLAT LIGHT CONCRETE POOL****OBSERVATIONS**

POS	CODE	OBSERVATIONS
1	* 4403012304	FOR: 35666
2	* 4403012301	FOR: 35666
3	* 4403011901	FOR: 21626

CODICE 21626, 35666

DESCRIZIONE: PROIETTORE EXTRA PIANO PISCINA CEMENTO



ITALIANO

POS	CODICE	DESCRIZIONE	QUANTITA'	POS	CODICE	DESCRIZIONE	QUANTITA'
1	* 4403012304	ANELLO ORNAMENTALE INOSSID.		9	4403010076	INSIEME TAPPO PREMISTOPPA	
2	* 4403012301	KIT ANELLO ORNAMENTALE INOSSID.		10	4403011905	CAVO FARO	
3	* 4403011901	ANELLO FRONTALE FARO PIATTO		11	4403015405	CAVO FARO, PRESSACAVO	
4	4403012303	LENTE PROIETTORE + GUERNIZIONE		12	4403011908	CORPO FARO	
5	4403010102	GUARNIZIONE SILICONE FARO		13	4403011405	PRESSACAVI FARO DICROICO	
6	4403011903	RIFLETTORE PORTALAMPADE		14	4403011907	PRESSACAVO	
7	4403011407	PORTALAMPADE		15	4403011906	SUPPORTO FARO	
8	4403012302	KIT PRESSACAVO M-16 KT 19,5X2		16	00371	LAMPADINA 12 V. 100 W.	

CODICE **21626, 35666**

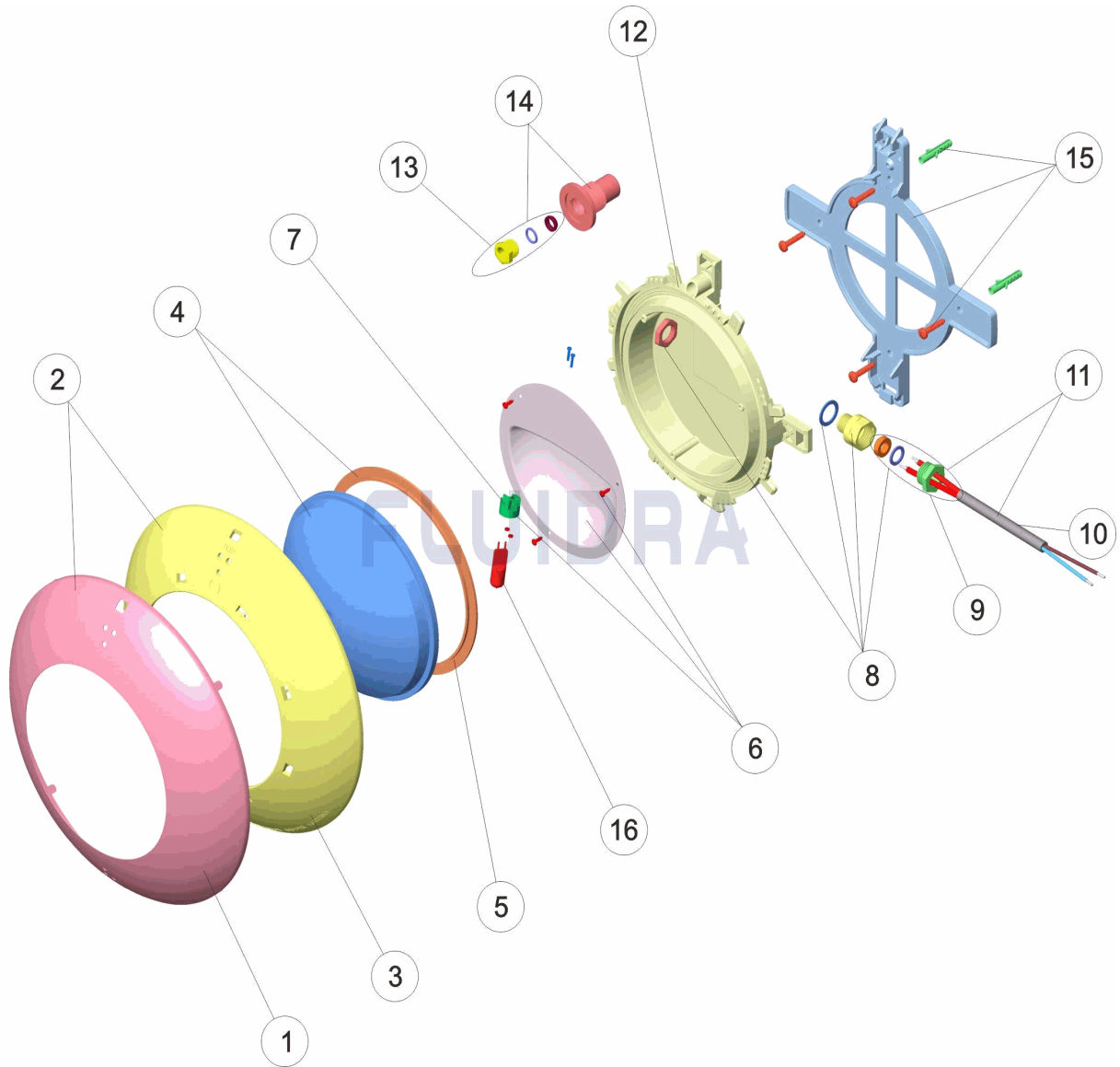
DESCRIZIONE: **PROIETTORE EXTRA PIANO PISCINA CEMENTO**

OSSERVAZIONI

POS	CODICE	OSSERVAZIONI
1	* 4403012304	PER: 35666
2	* 4403012301	PER: 35666
3	* 4403011901	PER: 21626

CODE **21626, 35666**

BESCHREIBUNG: **UWS EXTRAFLACH BETONBECKEN**



DEUTSCH

POS	CODE	BESCHREIBUNG	MENGE	POS	CODE	BESCHREIBUNG	MENGE
1	* 4403012304	BLENDE EDELSTAHL UWS EXTRA FLACH		9	4403010076	STOPFENSET QUETSCHVERSCHAUBUNC	
2	* 4403012301	SET BLENDE EDELSTAHL UWS EXTRA FLA		10	4403011905	UWS-KABEL	
3	* 4403011901	BLENDE UWS FLACH		11	4403015405	UWS-KABEL, QUETSCHVERSCHAUBUNG	
4	4403012303	LINSE TRANSPARENT UND DICTUNG		12	4403011908	GEHÄUSE UWS	
5	4403010102	DICTUNG SILIKON UWS		13	4403011405	QUETSCHVERSCHAUBUNG UWS KALTLIC	
6	4403011903	REFLEKTOR LAMPENFASSUNG		14	4403011907	KABELDURCHFÜHRUNG	
7	4403011407	LAMPENFASSUNG		15	4403011906	HALTERUNG UWS	
8	4403012302	SET QUETSCHVERSCHAUBUNG M-16 KT		16	00371	LAMPE HALOGEN 12 V 100 W	

CODE **21626, 35666**

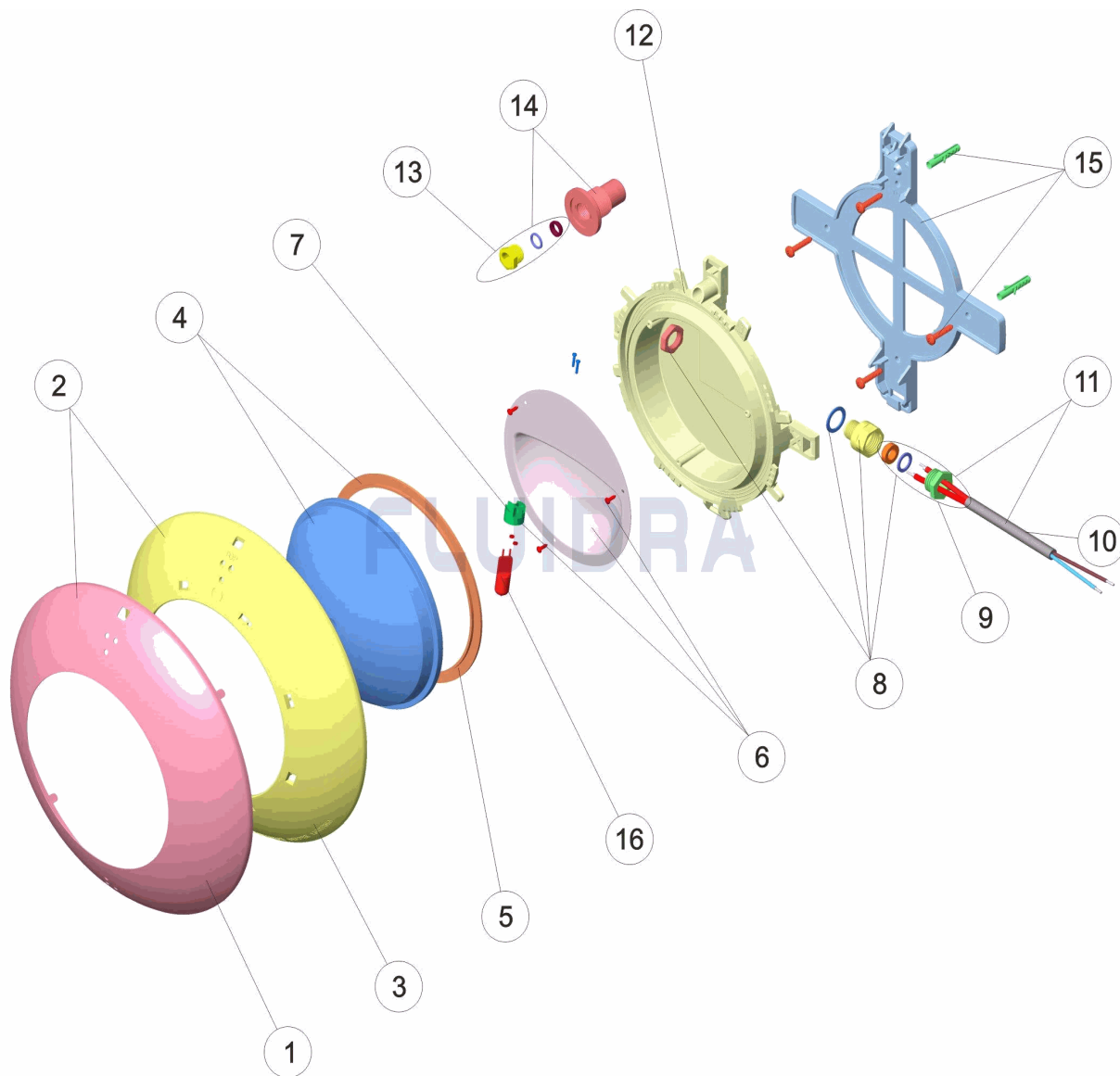
BESCHREIBUNG: **UWS EXTRAFLACH BETONBECKEN**

HINWEISE

POS	CODE	HINWEISE
1	* 4403012304	FÜR: 35666
2	* 4403012301	FÜR: 35666
3	* 4403011901	FÜR: 21626

CODIGO **21626, 35666**

DESCRIÇÃO: **PROJECTOR EXTRA PLANO PISC. BETÃO**



PORTUGUES

POS	CODIGO	DESCRIÇÃO	JANTIDADE	POS	CODIGO	DESCRIÇÃO	JANTIDADE
1	* 4403012304	ANEL DECORATIVO INOXIDABLE		9	4403010076	CONJUNTO TAMPABUCIM	
2	* 4403012301	CJTO. ANEL DECORATIVO INOXIDABLE		10	4403011905	CABO PROJECTOR	
3	* 4403011901	EMBELEZADOR PROJECTOR PLANO		11	4403015405	CABO P' ROJECTOR BUCIM PROJECTOR	
4	4403012303	LENTE TRANSPARENTE + JUNTA		12	4403011908	CORPO PROJECTOR	
5	4403010102	JUNTA SILICONE PROTECTOR		13	4403011405	BUCIN PROJECTOR	
6	4403011903	REFLECTOR PORTA-LÂMPADAS		14	4403011907	PASSA-CABOS	
7	4403011407	PORTA-LÂMPADA		15	4403011906	SUPORTE PROJECTOR	
8	4403012302	CONJUNTO BUCIM M-16 KT 19,5X2		16	00371	BOMBILHA 12 V. 100 W.	

CODIGO **21626, 35666**

DESCRIÇÃO: **PROJECTOR EXTRA PLANO PISC. BETÃO**

OBSERVAÇÕES

POS	CODIGO	OBSERVAÇÕES
1	* 4403012304	PARA: 35666
2	* 4403012301	PARA: 35666
3	* 4403011901	PARA: 21626