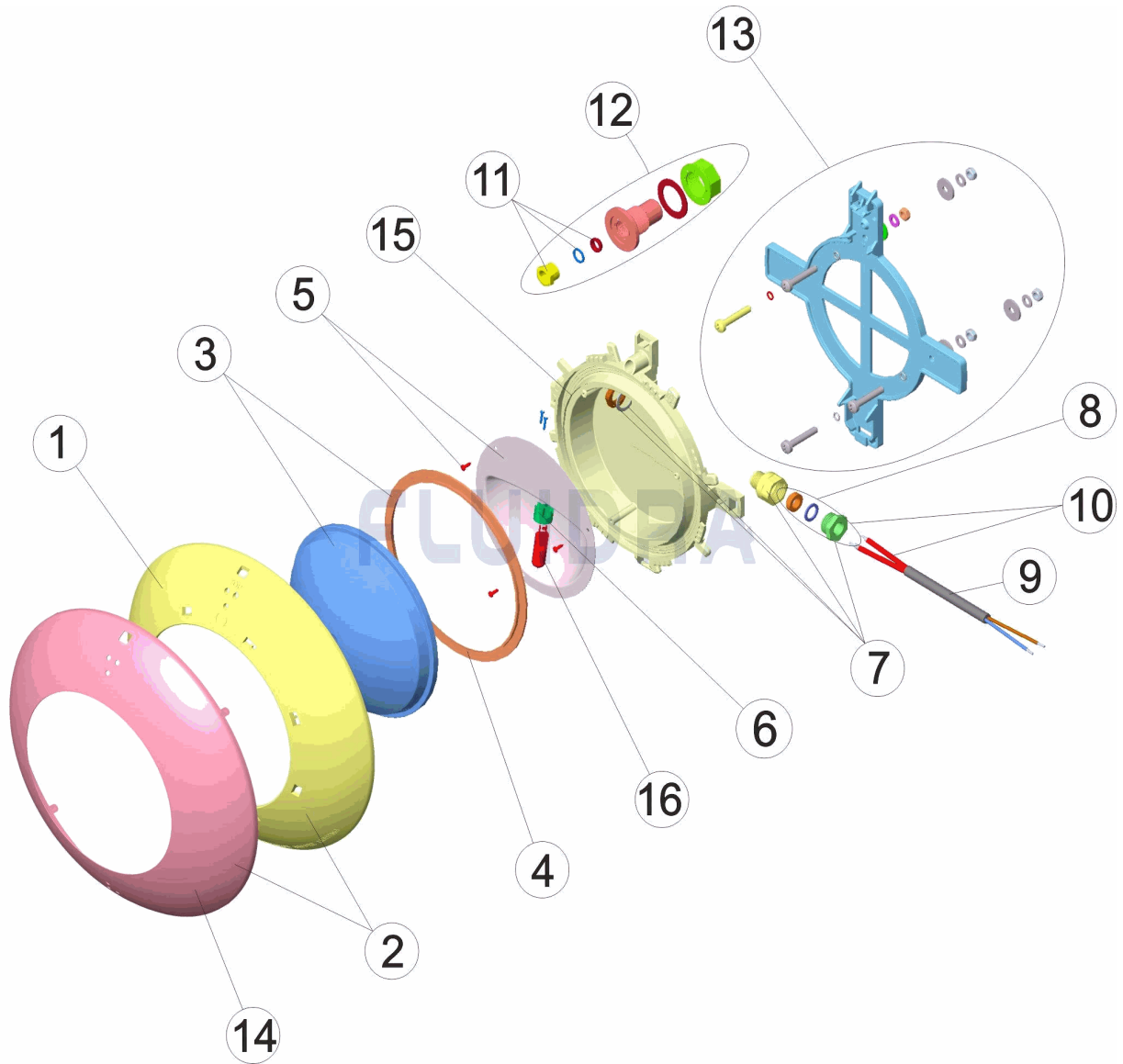


CODIGO 21627, 35667

DESCRIPCION: PROYECTOR EXTRA PLANO PISC. PREFABRICADA ARO BLANCO/INOX



ESPAÑOL

POS	CODIGO	DESCRIPCION	CANTIDAD	POS	CODIGO	DESCRIPCION	CANTIDAD
1	* 4403011901	EMBELLECEDOR PROYECTOR PLANO		9	4403011905	CABLE PROYECTOR	
2	* 4403012301	CJTO.EMBELLECED.INOX PROJEC.EXTRA		10	4403015405	CABLE PROYECTOR, PRENSAESTOPAS	
3	4403012303	LENTE TRANSPARENTE + JUNTA		11	4403011405	PRENSAESTOPAS PROYECTOR DICROICO	
4	4403010102	JUNTA SILICONA PROYECTOR		12	4403012307	PASACABLES	
5	4403011903	REFLECTOR PORTALAMPARAS		13	4403012305	SOPORTE PROYECTOR	
6	4403011407	PORTALAMPARAS		14	* 4403012304	EMBELLECEDOR INOX PROYECTOR EXTR/	
7	4403012302	CJTO. PRENSAESTOPAS M-16 KT 19,5X2		15	4403011908	CUERPO PROYECTOR	
8	4403010076	CJTO. TAPON PRENSAESTOPAS		16	00371	LAMPARA HALOGENA 12 V. 100 W.	

CODIGO **21627, 35667**

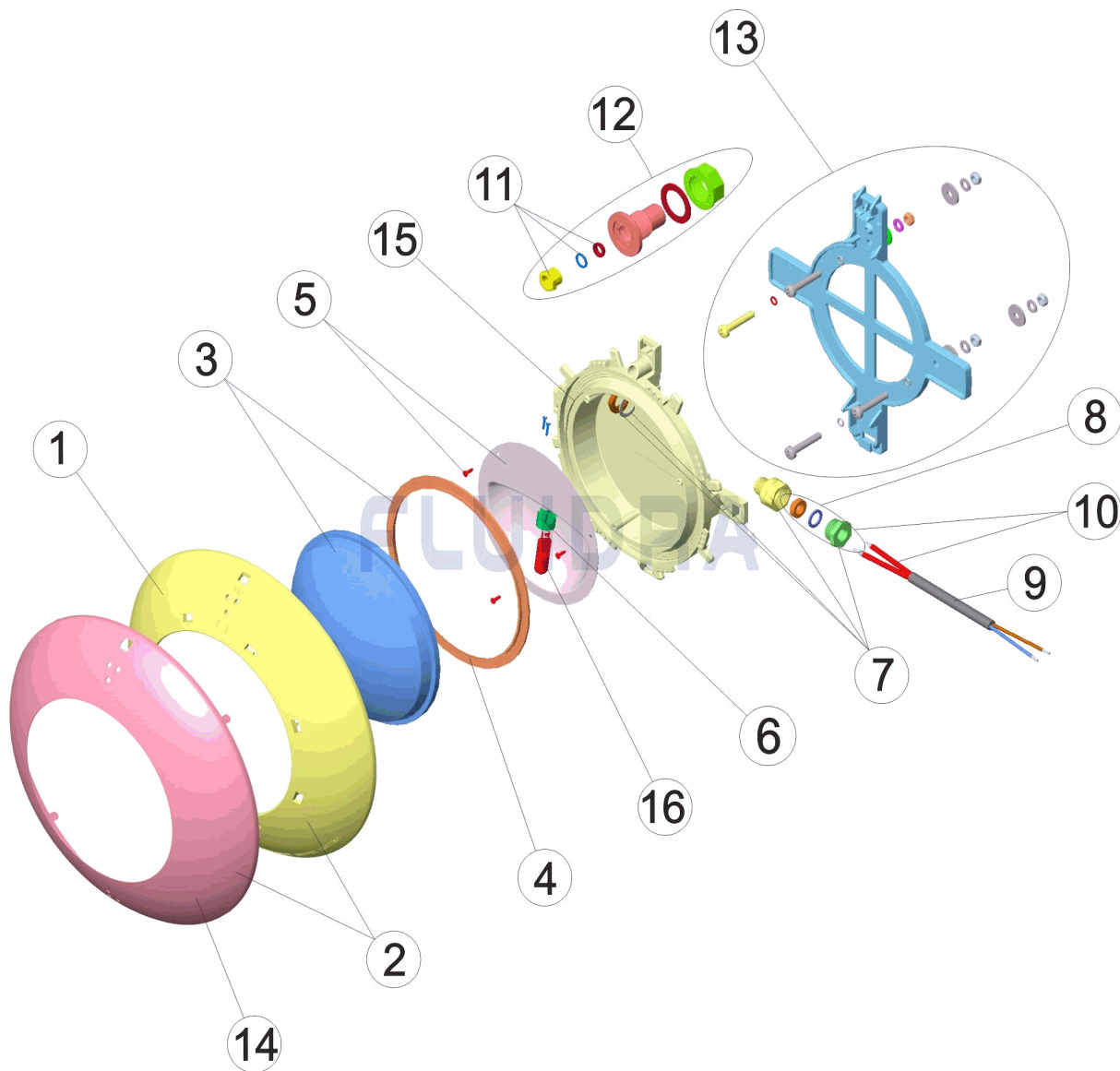
DESCRIPCION: **PROYECTOR EXTRA PLANO PISC. PREFABRICADA ARO BLANCO/INOX**

OBSERVACIONES

POS	CODIGO	OBSERVACIONES
1	* 4403011901	PARA: 21627
2	* 4403012301	PARA: 35667
14	* 4403012304	PARA: 35667

CODE 21627, 35667

DESCRIPTION: PROJECTEUR EXTRA-PLAT PISC. PRÉFABRIQUÉE ENJOLIVEUR BLANC/I



FRANCAIS

POS	CODE	DESCRIPTION	QUANTITE	POS	CODE	DESCRIPTION	QUANTITE
1	* 4403011901	ENJOLIVEUR PROJECTEUR PLAT		9	4403011905	CABLE DE PROJECTEUR	
2	* 4403012301	ENSEMBLE ANNEAU ENJOLIVER INOX		10	4403015405	CABLE PROJECTEUR PRESSE ÉTOUPE	
3	4403012303	LENTE PROJECTEUR + JOINT		11	4403011405	PRESSE-ÉTOUPE ET JOINT PROJ. DICHRO	
4	4403010102	JOINT SILICONE PROJECTEUR		12	4403012307	PASSE CABLE	
5	4403011903	REFLECTEUR PORTE LAMPE		13	4403012305	SUPPORT PROJECTEUR	
6	4403011407	PORTE-LAMPE		14	* 4403012304	ANNEAU ENJOLIVER INOX	
7	4403012302	ENSEMBLE PRESSE ÉTOUPE M-16 KT 19,€		15	4403011908	CORPS DU PROJECTEUR	
8	4403010076	ENSEMBLE BOUCHON PRESSE-ETOUPE		16	00371	LAMPE 12 V. 100 W.	

CODE **21627, 35667**

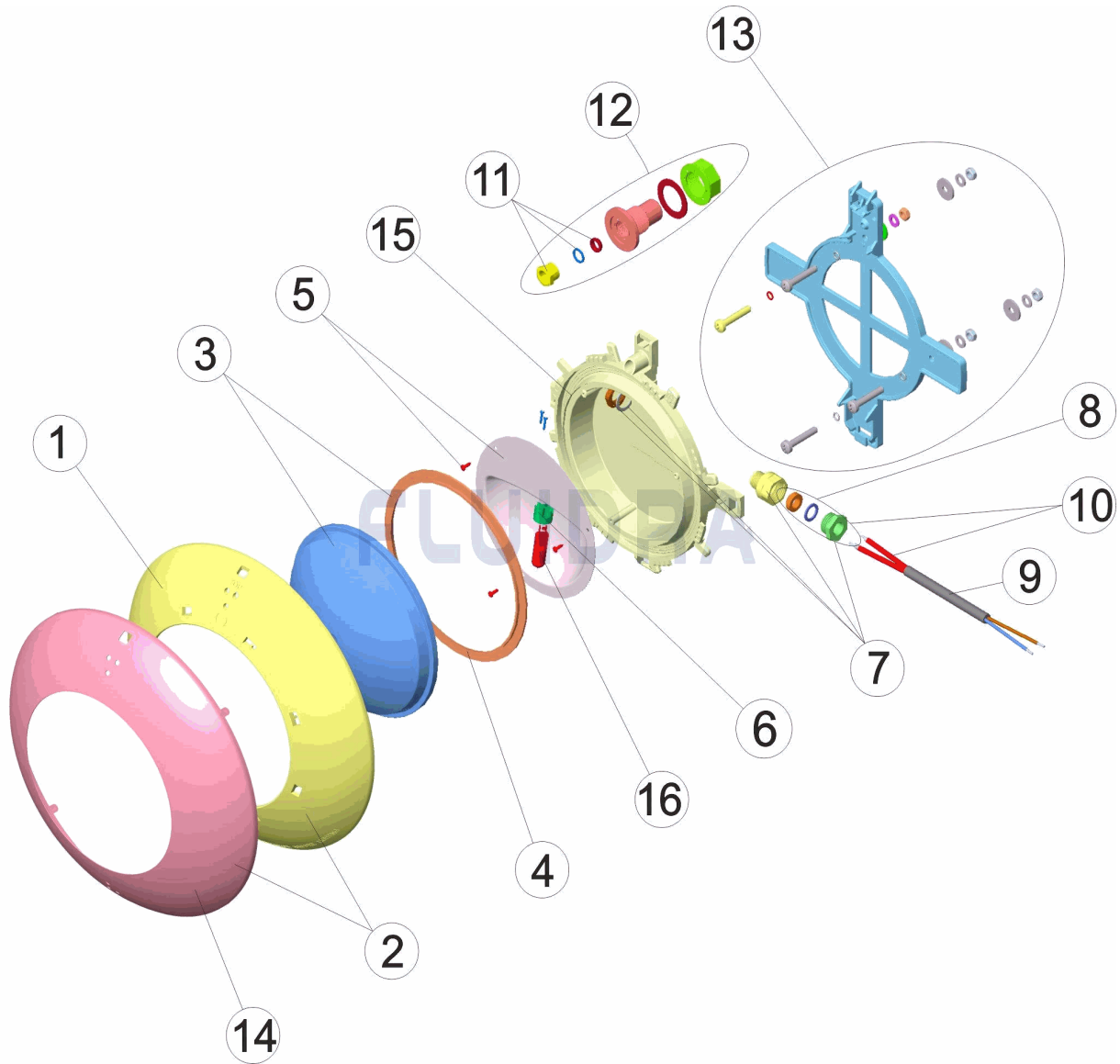
DESCRIPTION: **PROJECTEUR EXTRA-PLAT PISC. PRÉFABRIQUÉE ENJOLIVEUR BLANC/I**

OBSERVATIONS

POS	CODE	OBSERVATIONS
1	* 4403011901	POUR: 21627
2	* 4403012301	POUR: 35667
14	* 4403012304	POUR: 35667

CODE 21627, 35667

DESCRIPTION: EXTRA-FLAT LIGHT PREFABRICATED POOL WHITE RING / STAINLESS ST



ENGLISH

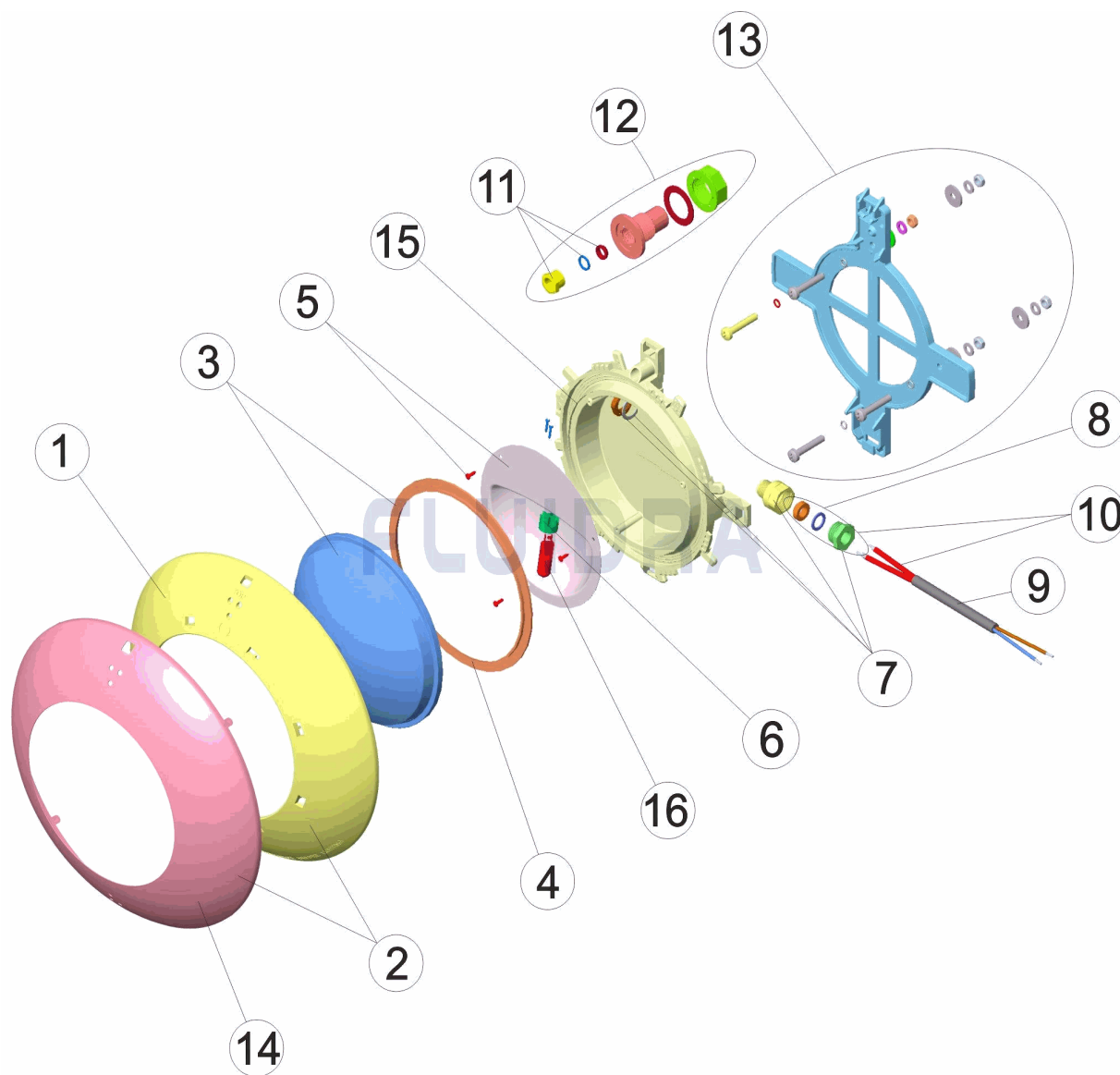
POS	CODE	DESCRIPTION	QUANTITY	POS	CODE	DESCRIPTION	QUANTITY
1	* 4403011901	FLAT LIGHT FACEPLATE		9	4403011905	LIGHT CABLE	
2	* 4403012301	SET RUSTPROOF DECORATIVE RING		10	4403015405	PROJECTOR CABLE, PACKING GLANDS PR	
3	4403012303	CLEAR LENS + GASKET		11	4403011405	PACKING GLAND	
4	4403010102	LIGHT SILICON GASKET		12	4403012307	CONDUIT CONNECTOR	
5	4403011903	LAMPHOLDER REFLECTOR PLATE		13	4403012305	LIGHT SUPPORT	
6	4403011407	LAMP HOLDER		14	* 4403012304	RUSTPROOF DECORATIVE RING	
7	4403012302	GLAND SEAL M-16 KT 19,5X2		15	4403011908	LIGHT BODY	
8	4403010076	PACKING GLAND ASSEMBLY		16	00371	LIGHTBULB 12 V. 100 W.	

CODE **21627, 35667**DESCRIPTION: **EXTRA-FLAT LIGHT PREFABRICATED POOL WHITE RING / STAINLESS ST****OBSERVATIONS**

POS	CODE	OBSERVATIONS
1	* 4403011901	FOR: 21627
2	* 4403012301	FOR: 35667
14	* 4403012304	FOR: 35667

CODICE 21627, 35667

DESCRIZIONE: PROIETTORE EXTRA PIANO PISCINA PREFABBRICATA ANELLO BIANCO/I



ITALIANO

POS	CODICE	DESCRIZIONE	QUANTITA'	POS	CODICE	DESCRIZIONE	QUANTITA'
1	* 4403011901	ANELLO FRONTALE FARO PIATTO		9	4403011905	CAVO FARO	
2	* 4403012301	KIT ANELLO ORNAMENTALE INOSSID.		10	4403015405	CAVO FARO, PRESSACAVO	
3	4403012303	LENTE PROIETTORE + GUERNIZIONE		11	4403011405	PRESSACAVI FARO DICROICO	
4	4403010102	GUARNIZIONE SILICONE FARO		12	4403012307	PRESSACAVO	
5	4403011903	RIFLETTORE PORTALAMPADE		13	4403012305	SUPPORTO FARO	
6	4403011407	PORTALAMPADE		14	* 4403012304	ANELLO ORNAMENTALE INOSSID.	
7	4403012302	KIT PRESSACAVO M-16 KT 19,5X2		15	4403011908	CORPO FARO	
8	4403010076	INSIEME TAPPO PREMISTOPPA		16	00371	LAMPADINA 12 V. 100 W.	

CODICE **21627, 35667**

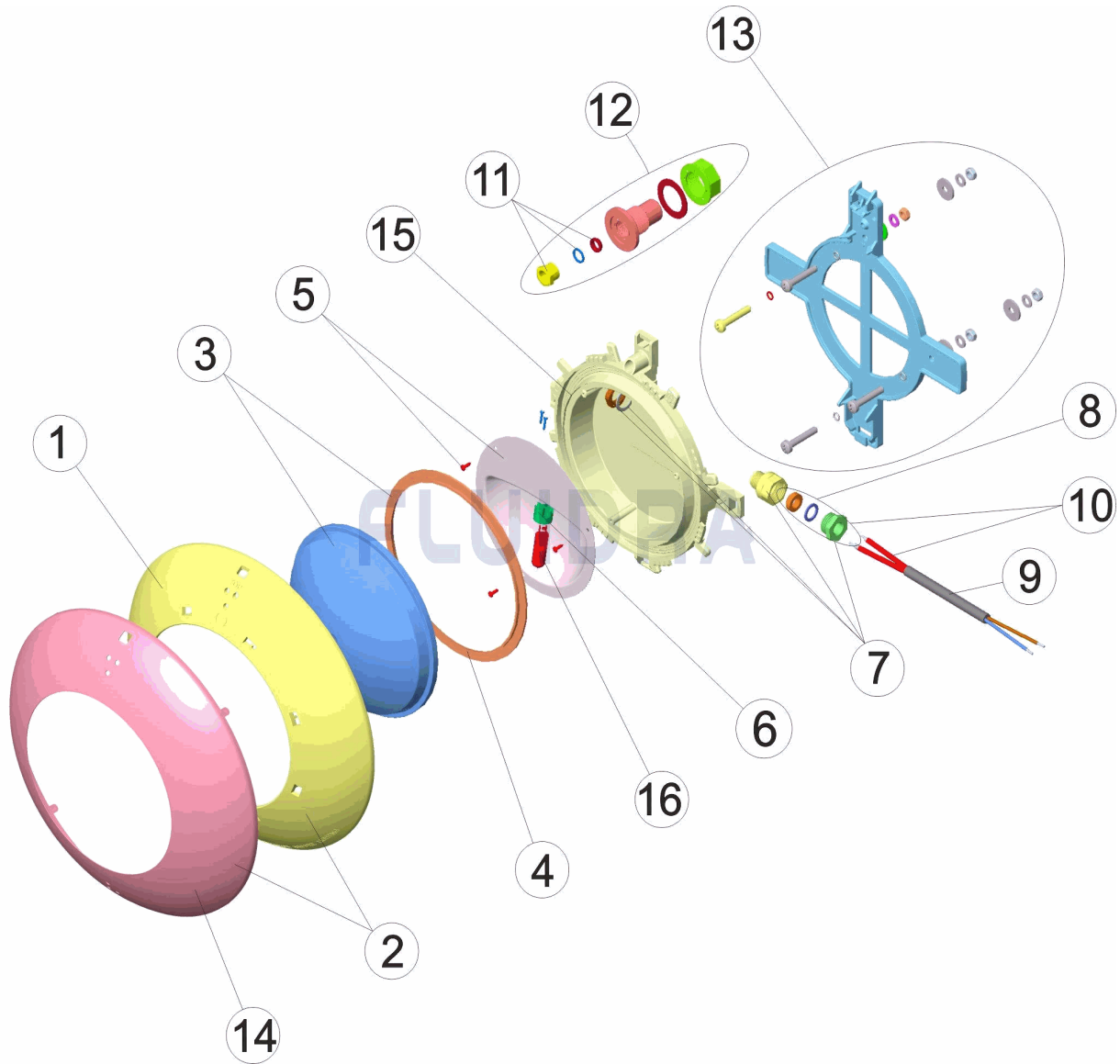
DESCRIZIONE: **PROIETTORE EXTRA PIANO PISCINA PREFABBRICATA ANELLO BIANCO/I**

OSSERVAZIONI

POS	CODICE	OSSERVAZIONI
1	* 4403011901	PER: 21627
2	* 4403012301	PER: 35667
14	* 4403012304	PER: 35667

CODE 21627, 35667

BESCHREIBUNG: UWS EXTRAFLACH FERTIGBECKEN RING WEISS/EDELSTAHL



DEUTSCH

POS	CODE	BESCHREIBUNG	MENGE	POS	CODE	BESCHREIBUNG	MENGE
1	* 4403011901	BLLENDE UWS FLACH		9	4403011905	UWS-KABEL	
2	* 4403012301	SET BLENDE EDELSTAHL UWS EXTRA FLA		10	4403015405	UWS-KABEL, QUETSCHVERSCHRAUBUNG	
3	4403012303	LINSE TRANSPARENT UND DICHUNG		11	4403011405	QUETSCHVERSCHRAUBUNG UWS KALTIC	
4	4403010102	DICHUNG SILIKON UWS		12	4403012307	KABELDURCHFÜHRUNG	
5	4403011903	REFLEKTOR LAMPENFASSUNG		13	4403012305	HALTERUNG UWS	
6	4403011407	LAMPENFASSUNG		14	* 4403012304	BLLENDE EDELSTAHL UWS EXTRA FLACH	
7	4403012302	SET QUETSCHVERSCHRAUBUNG M-16 KT		15	4403011908	GEHÄUSE UWS	
8	4403010076	STOPFENSET QUETSCHVERSCHRAUBUN		16	00371	LAMPE HALOGEN 12 V 100 W	

CODE **21627, 35667**

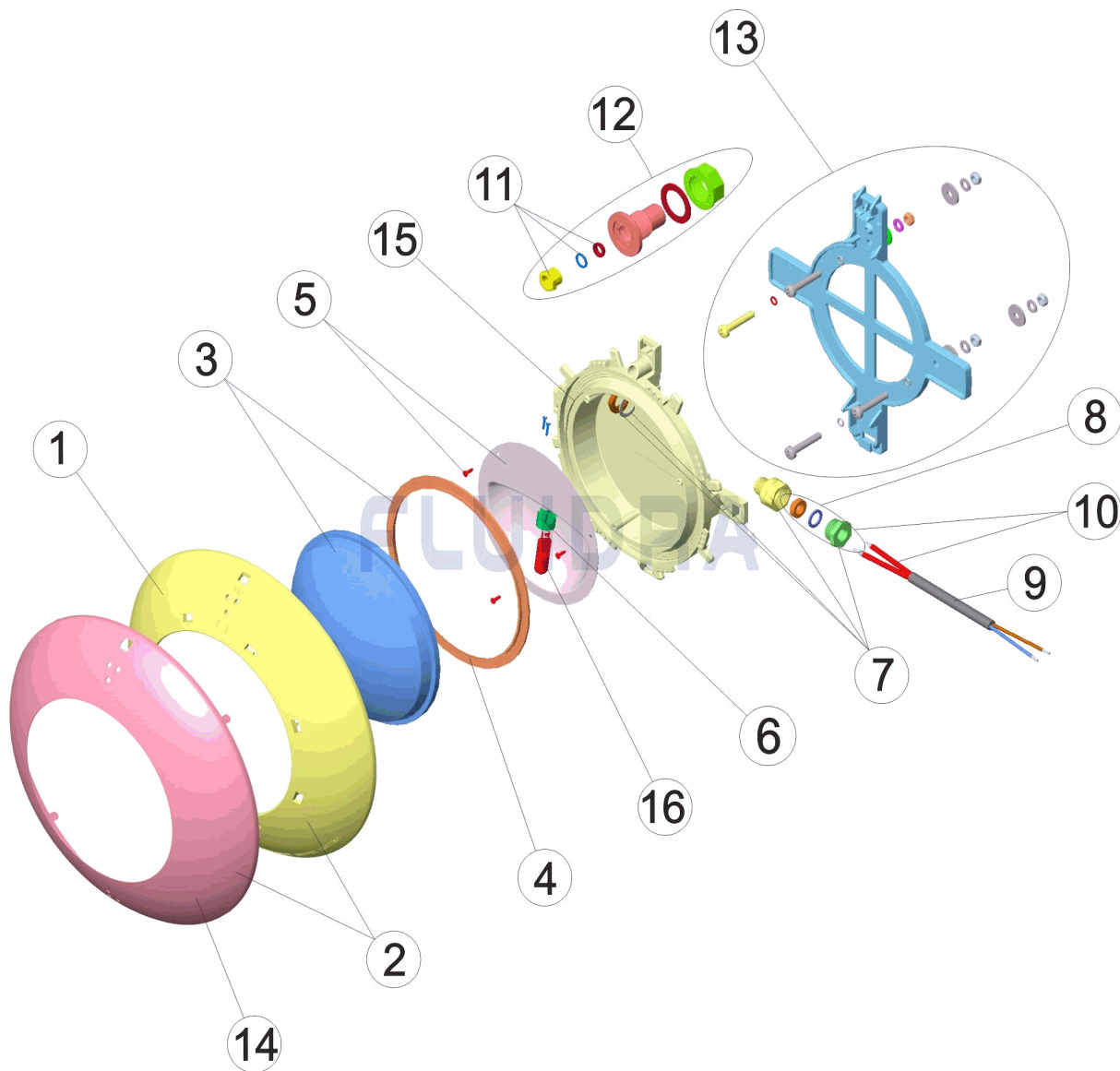
BESCHREIBUNG: **UWS EXTRAFLACH FERTIGBECKEN RING WEISS/EDELSTAHL**

HINWEISE

POS	CODE	HINWEISE
1	* 4403011901	FÜR: 21627
2	* 4403012301	FÜR: 35667
14	* 4403012304	FÜR: 35667

CODIGO 21627, 35667

DESCRIÇÃO: PROJECTOR EXTRA PLANO PISC. PRÉ-FABRICADA ARO BRANCO/INOX



PORTUGUES

POS	CODIGO	DESCRIÇÃO	JANTIDADE	POS	CODIGO	DESCRIÇÃO	JANTIDADE
1	* 4403011901	EMBELEZADOR PROJECTOR PLANO		9	4403011905	CABO PROJECTOR	
2	* 4403012301	CJTO. ANEL DECORATIVO INOXIDABLE		10	4403015405	CABO P'ROJECTOR BUCIM PROJECTOR	
3	4403012303	LENTE TRANSPARENTE + JUNTA		11	4403011405	BUCIN PROJECTOR	
4	4403010102	JUNTA SILICONE PROTECTOR		12	4403012307	PASSA-CABOS	
5	4403011903	REFLECTOR PORTA-LÂMPADAS		13	4403012305	SUPORTE PROJECTOR	
6	4403011407	PORTA-LÂMPADA		14	* 4403012304	ANEL DECORATIVO INOXIDABLE	
7	4403012302	CONJUNTO BUCIM M-16 KT 19,5X2		15	4403011908	CORPO PROJECTOR	
8	4403010076	CONJUNTO TAMPABUCIM		16	00371	BOMBILHA 12 V. 100 W.	

CODIGO **21627, 35667**

DESCRIÇÃO: **PROJECTOR EXTRA PLANO PISC. PRÉ-FABRICADA ARO BRANCO/INOX**

OBSERVAÇÕES

POS	CODIGO	OBSERVAÇÕES
1	* 4403011901	PARA: 21627
2	* 4403012301	PARA: 35667
14	* 4403012304	PARA: 35667