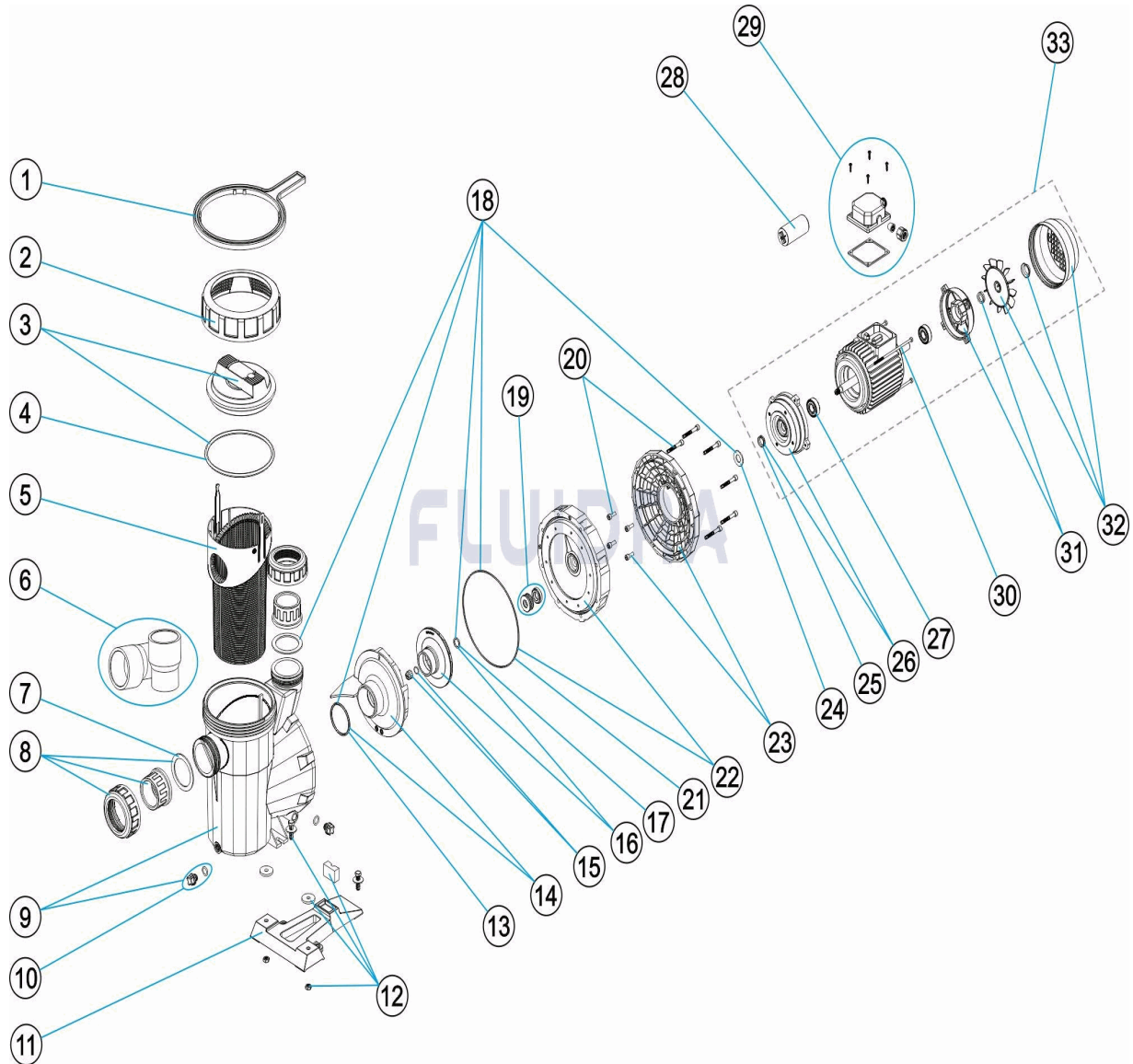


CODIGO 05085, 05086, 05087, 05088, 05089, 05090, 05091, 05092, 05093, 05094, 05095, 23024, 23043

DESCRIPCION: BOMBA AUTOASPIRANTE SPRINT



ESPAÑOL

| POS | CODIGO | DESCRIPCION | CANTIDAD | POS | CODIGO | DESCRIPCION | CANTIDAD |
|-----|--------------|-----------------------------------|----------|-----|--------------|---------------------------|----------|
| 1 | 4404130103 | LLAVE TUERCA FILTRO | | 14 | * 4405010116 | DIFUSOR 1 HP - 2 HP | |
| 2 | 4404130101 | TUERCA TAPA PREFILTRO | | 14 | * 4405010117 | DIFUSOR 2,5 - 3 HP | |
| 3 | 4405010702 | TAPA PREFILTRO | | 15 | 4405010134 | TAPÓN RODETE M8 IZQUIERDA | |
| 4 | 4405010178 | JUNTA TORICA D. 151,7X6,99 | | 16 | * 4405010723 | RODETE 1/3 HP 50 HZ | |
| 5 | 4405010105 | CESTO PREFILTRO | | 16 | * 4405010716 | RODETE 1/3 HP 60 HZ | |
| 6 | * 4405010717 | ACCESORIOS ENLACE 3 HP | | 16 | * 4405010591 | RODETE ½ (II) HP | |
| 7 | 4405010179 | JUNTA PLANA 72X55X2,5 | | 16 | * 4405010667 | RODETE ½ (II) HP 60 HZ | |
| 8 | * 4405010106 | ACCESORIOS ENLACE <= 1 HP | | 16 | * 4405010592 | RODETE ½ (III) HP | |
| 8 | * 4405010107 | ACCESORIOS ENLACE 1,5 HP - 2,5 HP | | 16 | * 4405010668 | RODETE ½ (III) HP 60 HZ | |
| 9 | 4405010109 | CUERPO BOMBA | | 16 | * 4405010593 | RODETE ¾ (II) HP | |
| 10 | 4405010110 | TAPONES PURGA " | | 16 | * 4405010669 | RODETE ¾ (II) HP 60 HZ | |
| 11 | 4405010207 | PIE BOMBA | | 16 | * 4405010594 | RODETE ¾ (III) HP | |

*** NOTA OBSERVACIONES**

CODIGO **05085, 05086, 05087, 05088, 05089, 05090, 05091, 05092, 05093, 05094, 05095, 23024, 23043**

DESCRIPCION: BOMBA AUTOASPIRANTE SPRINT

| | | | | | |
|----|--------------|--|----|--------------|--|
| 12 | 4405010206 | UNIÓN HIDRÁULICA PIE | 16 | * 4405010670 | RODETE ¾ (III) HP 60 HZ |
| 13 | 4405010161 | JUNTA TORICA D. 56,7X3,5 | 16 | * 4405010595 | RODETE 1 (II) HP |
| 14 | * 4405010115 | DIFUSOR <=0,75 HP | 16 | * 4405010671 | RODETE 1 (II) HP 60 HZ |
| 16 | * 4405010596 | RODETE 1 (III) HP | 28 | * 4405010149 | CONDENSADOR 12 UF 1/2 CV |
| 16 | * 4405010672 | RODETE 1 (III) HP 60 HZ | 28 | * 4405020121 | CONDENSADOR 14 UF 3/4 CV |
| 16 | * 4405010597 | RODETE 1,5 (II) HP | 28 | * 4405020122 | CONDENSADOR 16 UF 1 CV |
| 16 | * 4405010673 | RODETE 1,5 (II) HP 60 HZ | 28 | * 4405010150 | CONDENSADOR 18 UF 1,5 CV |
| 16 | * 4405010598 | RODETE 1,5 (III) HP | 28 | * 4405010174 | CONDENSADOR 32 UF 2 CV |
| 16 | * 4405010674 | RODETE 1,5 (III) HP 60 HZ | 28 | * 4405010175 | CONDENSADOR 40 UF 2,5-3 CV |
| 16 | * 4405010599 | RODETE 2 (II) HP | 29 | * 4405010154 | CJTO. CAJA BORNES C. 63-71 II |
| 16 | * 4405010675 | RODETE 2 (II) HP 60 HZ | 29 | * 4405010155 | CJTO. CAJA BORNES (C 80-90) II (ANDIA) |
| 16 | * 4405010600 | RODETE 2 (III) HP | 29 | * 4405010156 | CJTO. CAJA BORNES C.63-71 III |
| 16 | * 4405010676 | RODETE 2 (III) HP 60 HZ | 29 | * 4405010157 | CJTO. CAJA BORNES C.80-90 III |
| 16 | * 4405010601 | RODETE 3 (II) HP | 30 | * 4405010143 | VARILLAS MOTOR C. 63 |
| 16 | * 4405010677 | RODETE 3 (II) HP 60 HZ | 30 | * 4405010144 | VARILLAS MOTOR 0,75 - 1 HP |
| 16 | * 4405010602 | RODETE 3 (III) HP | 30 | * 4405010145 | VARILLAS MOTOR 1,5 - 3 HP III |
| 16 | * 4405010678 | RODETE 3 (III) HP 60 HZ | 30 | * 4405010169 | VARILLAS MOTOR (90) 3 HP II |
| 17 | * 4405010162 | ARANDELA DISTANCIADORA (1/2-3/4-1-1,5- | 31 | * 4405010140 | TAPA TRASERA MOTOR 1/3 A 1/2 HP |
| 18 | * 4405010103 | JUNTAS DE GOMA 0,5 HP 2 HP | 31 | * 4405010141 | TAPA TRASERA MOTOR 3/4 A 1 HP |
| 18 | * 4405010104 | JUNTAS DE GOMA 3 HP | 31 | * 4405010142 | TAPA TRASERA MOTOR 1,5 - 3 HP III |
| 19 | 4405010118 | JUNTA MECÁNICA | 31 | * 4405010168 | TAPA TRASERA MOTOR 2,5 - 3 HP II |
| 20 | 4405010133 | TORNILLERÍA BRIDA MOTOR | 32 | * 4405010146 | CJTO. VENTILADOR-TAPA 0,5 HP |
| 21 | 4405010160 | JUNTA BRIDA MOTOR | 32 | * 4405010147 | CJTO. VENTILADOR-TAPA 0,75 - 1 HP |
| 22 | 4405010132 | BRIDA SELLO MECÁNICO | 32 | * 4405010148 | CJTO. VENTILADOR-TAPA 1,5 - 2 - 3 HP III |
| 23 | * 4405010130 | BRIDA MOTOR <= 1 HP | 32 | * 4405010170 | CJTO. VENTILADOR-TAPA 3 HP II |
| 23 | * 4405010131 | BRIDA MOTOR 1,5 HP - 3HP | 33 | * 20597R0475 | MOTOR 1/2 HP II |
| 24 | * 4405010163 | ARANDELA DEFLECTORA C,71 1/2-1 HP | 33 | * 20598R0475 | MOTOR 1/2 HP III |
| 24 | * 4405010164 | ARANDELA DEFLECTORA C,80 1,5-3 HP | 33 | * 20599R0475 | MOTOR 3/4 HP II |
| 25 | * 4405010158 | V-RINGS 0,5 HP - 1 HP | 33 | * 20600R0475 | MOTOR 3/4 HP III |
| 25 | * 4405010159 | V-RINGS 1,5 HP - 3 HP | 33 | * 20601R0475 | MOTOR 1 HP II |
| 25 | * 4405010176 | V-RING VA-2,5 - 3 HP II | 33 | * 20602R0475 | MOTOR 1 HP III |
| 26 | * 4405010137 | TAPA DELANTERA MOTOR 0,5 HP | 33 | * 20603R0575 | MOTOR 1,5 HP II |
| 26 | * 4405010138 | TAPA DELANTERA MOTOR 0,75 - 1 HP | 33 | * 20604R0575 | MOTOR 1,5 HP III |
| 26 | * 4405010139 | TAPA DELANTERA MOTOR 1,5 - 3 HP III | 33 | * 20605R0475 | MOTOR 2 HP II |
| 26 | * 4405010167 | TAPA DELANTERA MOTOR 2,5 - 3 HP II | 33 | * 20606R0475 | MOTOR 2 HP III |
| 27 | * 4405010135 | RODAMIENTO MOTOR < 1 HP | 33 | * 22341R0475 | MOTOR 3 HP II |
| 27 | * 4405010136 | RODAMIENTO MOTOR 1,5 HP - 3 HP | 33 | * 20607R0475 | MOTOR 3 HP III |
| 27 | * 4405010171 | CJTO. RODAMIENTO 6205 2RS 3,5HP | | | |

CODIGO 05085, 05086, 05087, 05088, 05089, 05090, 05091, 05092, 05093, 05094, 05095, 23024, 23043

DESCRIPCION: BOMBA AUTOASPIRANTE SPRINT

OBSERVACIONES

| POS | CODIGO | OBSERVACIONES |
|-----|--------------|---|
| 6 | * 4405010717 | PARA: 05090, 23043 |
| 8 | * 4405010106 | PARA: 05085, 05086, 05087, 05091, 05092, 05093, 23024 |
| 8 | * 4405010107 | PARA: 05088, 05089, 05090, 05094, 05095, 23043 |
| 14 | * 4405010115 | PARA: 05085, 05086, 05091, 05092, 23024 |
| 14 | * 4405010116 | PARA: 05087, 05088, 05089, 05093, 05094, 05095 |
| 14 | * 4405010117 | PARA: 05090, 23043 |
| 16 | * 4405010723 | PARA: 23024 50 HZ |
| 16 | * 4405010716 | PARA: 23024 60 HZ |
| 16 | * 4405010591 | PARA: 05091 50 HZ |
| 16 | * 4405010667 | PARA: 05091 60 HZ |
| 16 | * 4405010592 | PARA: 05085 50 HZ |
| 16 | * 4405010668 | PARA: 05085 60 HZ |
| 16 | * 4405010593 | PARA: 05092 50 HZ |
| 16 | * 4405010669 | PARA: 05092 60 HZ |
| 16 | * 4405010594 | PARA: 05086 50 HZ |
| 16 | * 4405010670 | PARA: 05086 60 HZ |
| 16 | * 4405010595 | PARA: 05093 50 HZ |
| 16 | * 4405010671 | PARA: 05093 60 HZ |
| 16 | * 4405010596 | PARA: 05087 50 HZ |
| 16 | * 4405010672 | PARA: 05087 60 HZ |
| 16 | * 4405010597 | PARA: 05094 50 HZ |
| 16 | * 4405010673 | PARA: 05094 60 HZ |
| 16 | * 4405010598 | PARA: 05088 50 HZ |
| 16 | * 4405010674 | PARA: 05088 60 HZ |
| 16 | * 4405010599 | PARA: 05095 50 HZ |
| 16 | * 4405010675 | PARA: 05095 60 HZ |
| 16 | * 4405010600 | PARA: 05089 50 HZ |
| 16 | * 4405010676 | PARA: 05089 60 HZ |
| 16 | * 4405010601 | PARA: 23043 50 HZ |
| 16 | * 4405010677 | PARA: 23043 60 HZ |
| 16 | * 4405010602 | PARA: 05090 50 HZ |
| 16 | * 4405010678 | PARA: 05090 60 HZ |
| 17 | * 4405010162 | PARA: 05085, 05086, 05087, 05088, 05089, 05091, 05092, 05093, 05094, 05095, 23024 |
| 18 | * 4405010103 | PARA: 05085, 05086, 05087, 05091, 05092, 05093, 23024 |
| 18 | * 4405010104 | PARA: 05088, 05089, 05090, 05094, 05095, 23043 |
| 23 | * 4405010130 | PARA: 05085, 05086, 05087, 05091, 05092, 05093, 23024 |
| 23 | * 4405010131 | PARA: 05088, 05089, 05090, 05094, 05095, 23043 |
| 24 | * 4405010163 | PARA: 05085, 05086, 05087, 05091, 05092, 05093, 23024 |
| 24 | * 4405010164 | PARA: 05088, 05089, 05090, 05094, 05095, 23043 |
| 25 | * 4405010158 | PARA: 05085, 05086, 05087, 05091, 05092, 05093, 23024 |
| 25 | * 4405010159 | PARA: 05088, 05089, 05090, 05094, 05095 |
| 25 | * 4405010176 | PARA: 23043 |
| 26 | * 4405010137 | PARA: 05085, 05091, 23024 |

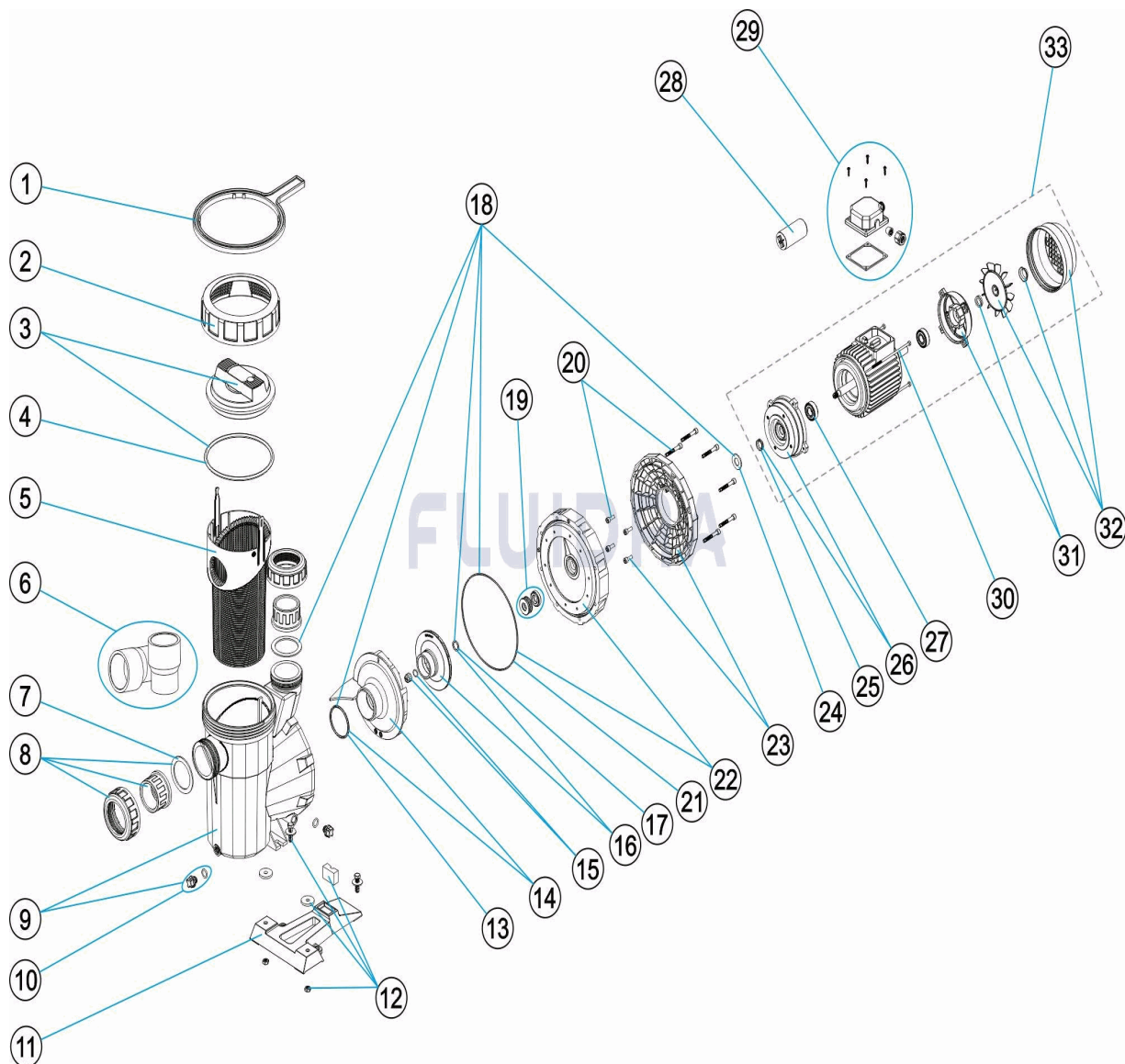
CODIGO 05085, 05086, 05087, 05088, 05089, 05090, 05091, 05092, 05093, 05094, 05095, 23024, 23043

DESCRIPCION: BOMBA AUTOASPIRANTE SPRINT

| | | |
|----|--------------|---|
| 26 | * 4405010138 | PARA: 05086, 05087, 05092, 05093 |
| 26 | * 4405010139 | PARA: 05088, 05089, 05090, 05094, 05095 |
| 26 | * 4405010167 | PARA: 23043 |
| 27 | * 4405010135 | PARA: 05085, 05086, 05087, 05091, 05092, 05093, 23024 |
| 27 | * 4405010136 | PARA: 05088, 05089, 05090, 05094, 05095 |
| 27 | * 4405010171 | PARA: 23043 |
| 28 | * 4405010149 | PARA: 05091 |
| 28 | * 4405020121 | PARA: 05092 |
| 28 | * 4405020122 | PARA: 05093 |
| 28 | * 4405010150 | PARA: 05094 |
| 28 | * 4405010174 | PARA: 05095 |
| 28 | * 4405010175 | PARA: 23043 |
| 29 | * 4405010154 | PARA: 05091, 05092, 05093, 23024 |
| 29 | * 4405010155 | PARA: 05094, 05095, 23043 |
| 29 | * 4405010156 | PARA: 05085, 05086, 05087 |
| 29 | * 4405010157 | PARA: 05088, 05089, 05090 |
| 30 | * 4405010143 | PARA: 05085, 05091, 23024 |
| 30 | * 4405010144 | PARA: 05086, 05087, 05092, 05093 |
| 30 | * 4405010145 | PARA: 05088, 05089, 05090, 05094, 05095 |
| 30 | * 4405010169 | PARA: 23043 |
| 31 | * 4405010140 | PARA: 05085, 05091, 23024 |
| 31 | * 4405010141 | PARA: 05086, 05087, 05092, 05093 |
| 31 | * 4405010142 | PARA: 05088, 05089, 05090, 05094, 05095 |
| 31 | * 4405010168 | PARA: 23043 |
| 32 | * 4405010146 | PARA: 05085, 05091, 23024 |
| 32 | * 4405010147 | PARA: 05086, 05087, 05092, 05093 |
| 32 | * 4405010148 | PARA: 05088, 05089, 05090, 05094, 05095 |
| 32 | * 4405010170 | PARA: 23043 |
| 33 | * 20597R0475 | PARA: 05091, 23024 |
| 33 | * 20598R0475 | PARA: 05085 |
| 33 | * 20599R0475 | PARA: 05092 |
| 33 | * 20600R0475 | PARA: 05086 |
| 33 | * 20601R0475 | PARA: 05093 |
| 33 | * 20602R0475 | PARA: 05087 |
| 33 | * 20603R0575 | PARA: 05094 |
| 33 | * 20604R0575 | PARA: 05088 |
| 33 | * 20605R0475 | PARA: 05095 |
| 33 | * 20606R0475 | PARA: 05089 |
| 33 | * 22341R0475 | PARA: 23043 |
| 33 | * 20607R0475 | PARA: 05090 |

CODE 05085, 05086, 05087, 05088, 05089, 05090, 05091, 05092, 05093, 05094, 05095, 23024, 23043

DESCRIPTION: POMPE AUTO-ASPIRANTE SPRINT



FRANCAIS

| POS | CODE | DESCRIPTION | QUANTITE | POS | CODE | DESCRIPTION | QUANTITE |
|-----|--------------|--------------------------------|----------|-----|--------------|--------------------------|----------|
| 1 | 4404130103 | CLE ECROU DE FILTRE | | 14 | * 4405010116 | DIFFUSEUR 1 HP - 2 HP | |
| 2 | 4404130101 | ECROU COUVERCLE PREFILTRE | | 14 | * 4405010117 | DIFFUSEUR 2,5 - 3 HP | |
| 3 | 4405010702 | COUVERCLE PRÉFILTRE | | 15 | 4405010134 | BOUCHON BOUT AXE M8 IZQ. | |
| 4 | 4405010178 | JOINT TORIQUE D 151,7X6,99 | | 16 | * 4405010723 | TURBINE 1/3 HP 50 HZ | |
| 5 | 4405010105 | PANIER PRÉFILTRE | | 16 | * 4405010716 | TURBINE 1/3 HP 60 HZ | |
| 6 | * 4405010717 | RACCORDS UNION 3 HP | | 16 | * 4405010591 | TURBINE ½ (II) HP | |
| 7 | 4405010179 | JOINT PLAT 72X55X2,5 | | 16 | * 4405010667 | TURBINE ½ (II) HP 60 HZ | |
| 8 | * 4405010106 | RACCORDS UNION <= 1 HP | | 16 | * 4405010592 | TURBINE ½ (III) HP | |
| 8 | * 4405010107 | RACCORDS UNION 1,5 HP - 2,5 HP | | 16 | * 4405010668 | TURBINE ½ (III) HP 60 HZ | |
| 9 | 4405010109 | CORPS POMPE | | 16 | * 4405010593 | TURBINE ¾ (II) HP | |
| 10 | 4405010110 | BOUCHON DE PURGUE " | | 16 | * 4405010669 | TURBINE ¾ (II) HP 60 HZ | |
| 11 | 4405010207 | SOCLE POMPE | | 16 | * 4405010594 | TURBINE ¾ (III) HP | |

CODE **05085, 05086, 05087, 05088, 05089, 05090, 05091, 05092, 05093, 05094, 05095, 23024, 23043**

DESCRIPTION: **POMPE AUTO-ASPIRANTE SPRINT**

| | | | | | |
|----|--------------|--|----|--------------|---------------------------------------|
| 12 | 4405010206 | RACCORD HYDRAULIQUE DE PIED | 16 | * 4405010670 | TURBINE ¾ (III) HP 60 HZ |
| 13 | 4405010161 | JOINT TORIQUE D 56,7X3,5 | 16 | * 4405010595 | TURBINE 1 (II) HP |
| 14 | * 4405010115 | DIFFUSEUR <=0,75 HP | 16 | * 4405010671 | TURBINE 1 (II) HP 60 HZ |
| 16 | * 4405010596 | TURBINE 1 (III) HP | 28 | * 4405010149 | CONDENSATEUR 12 UF 1/2 CV |
| 16 | * 4405010672 | TURBINE 1 (III) HP 60 HZ | 28 | * 4405020121 | CONDENSATEUR 14 UF 3/4 CV |
| 16 | * 4405010597 | TURBINE 1,5 (II) HP | 28 | * 4405020122 | CONDENSATEUR 16 UF 1 CV |
| 16 | * 4405010673 | TURBINE 1,5 (II) HP 60 HZ | 28 | * 4405010150 | CONDENSATEUR 18 UF |
| 16 | * 4405010598 | TURBINE 1,5 (III) HP | 28 | * 4405010174 | CONDENSATEUR 32 ?F 2 CV |
| 16 | * 4405010674 | TURBINE 1,5 (III) HP 60 HZ | 28 | * 4405010175 | CONDENSATEUR 40 ?F 2,5-3 CV |
| 16 | * 4405010599 | TURBINE 2 (II) HP | 29 | * 4405010154 | ENSEMBLE BOITIER CONNEXION C. 63-71 I |
| 16 | * 4405010675 | TURBINE 2 (II) HP 60 HZ | 29 | * 4405010155 | ENSEMBLE BOITIER CONNEXION (C 80-90) |
| 16 | * 4405010600 | TURBINE 2 (III) HP | 29 | * 4405010156 | COUVERCLE BORNIER C 63-71 III |
| 16 | * 4405010676 | TURBINE 2 (III) HP 60 HZ | 29 | * 4405010157 | ENSEMBLE BOITIER CONNEXION C.80-90 II |
| 16 | * 4405010601 | TURBINE 3 (II) HP | 30 | * 4405010143 | TIRANTS D'ACCOUPEMENT MOTEUR C. 6 |
| 16 | * 4405010677 | TURBINE 3 (II) HP 60 HZ | 30 | * 4405010144 | TIRANTS D'ACCOUPEMENT MOTEUR 0,75 |
| 16 | * 4405010602 | TURBINE 3 (III) HP | 30 | * 4405010145 | TIRANTS D'ACCOUPEMENT MOTEUR 1,5 - |
| 16 | * 4405010678 | TURBINE 3 (III) HP 60 HZ | 30 | * 4405010169 | TIRANTS D'ACCOUPEMENT MOTEUR (90) |
| 17 | * 4405010162 | JOINT RAMASSE GOUTTES (1/2-3/4-1-1,5-2 | 31 | * 4405010140 | COUVERCLE ARRIÈRE MOTEUR 1/3 A 1/2 H |
| 18 | * 4405010103 | JOINT 0,5 HP - 2 HP | 31 | * 4405010141 | COUVERCLE ARRIÈRE MOTEUR 3/4 A 1 HP |
| 18 | * 4405010104 | JOINT 3 HP | 31 | * 4405010142 | COUVERCLE ARRIÈRE MOTEUR 1,5 - 3 HP |
| 19 | 4405010118 | GARNITURE MÉCANIQUE | 31 | * 4405010168 | COUVERCLE ARRIÈRE MOTEUR 2,5 - 3 HP |
| 20 | 4405010133 | VIS FLASQUE ACCOUP. MOTEUR | 32 | * 4405010146 | ENSEMBLE COUVERCLE VENTILATEUR 0,5 |
| 21 | 4405010160 | JOINT FLASQUE ACCOUP. MOTEUR | 32 | * 4405010147 | ENSEMBLE COUVERCLE VENTILATEUR 0,7 |
| 22 | 4405010132 | FLASQUE PORTE GRANITURE | 32 | * 4405010148 | ENSEMBLE COUVERCLE VENTILATEUR 1,5 |
| 23 | * 4405010130 | FLASQUE ACCOUP. MOTEUR <= 1 HP | 32 | * 4405010170 | ENSEMBLE COUVERCLE VENTILATEUR 3 |
| 23 | * 4405010131 | FLASQUE ACCOUP. MOTEUR 1,5 HP - 3HP | 33 | * 20597R0475 | MOTEUR 1/2 HP II |
| 24 | * 4405010163 | JOINT RAMASSE GOUTTES C.71 1/2-1 HP | 33 | * 20598R0475 | MOTEUR 1/2 HP III |
| 24 | * 4405010164 | JOINT RAMASSE GOUTTES C.80 1,5-3 HP | 33 | * 20599R0475 | MOTEUR 3/4 HP II |
| 25 | * 4405010158 | V-RINGS 0,5 HP - 1 HP | 33 | * 20600R0475 | MOTEUR 3/4 HP III |
| 25 | * 4405010159 | V-RINGS 1,5 HP - 3 HP | 33 | * 20601R0475 | MOTEUR 1 HP II |
| 25 | * 4405010176 | V-RINGS VA-2,5 - 3 HP II | 33 | * 20602R0475 | MOTEUR 1 HP III |
| 26 | * 4405010137 | COUVERCLE AXE MOTEUR 0,5 HP | 33 | * 20603R0575 | MOTEUR 1,5 HP II |
| 26 | * 4405010138 | COUVERCLE AXE MOTEUR 0,75 - 1 HP | 33 | * 20604R0575 | MOTEUR 1,5 HP III |
| 26 | * 4405010139 | COUVERCLE AXE MOTEUR 1,5 - 3 HP III | 33 | * 20605R0475 | MOTEUR 2 HP II |
| 26 | * 4405010167 | COUVERCLE AXE MOTEUR 2,5 - 3 HP II | 33 | * 20606R0475 | MOTEUR 2 HP III |
| 27 | * 4405010135 | ROULEMENT MOTEUR < 1 HP | 33 | * 22341R0475 | MOTEUR 3 HP II |
| 27 | * 4405010136 | ROULEMENT MOTEUR 1,5 HP - 3 HP | 33 | * 20607R0475 | MOTEUR 3 HP III |
| 27 | * 4405010171 | ENSEMBLE ROULEMENT 6205 2RS 3,5HP | | | |

CODE **05085, 05086, 05087, 05088, 05089, 05090, 05091, 05092, 05093, 05094, 05095, 23024, 23043**

DESCRIPTION: **POMPE AUTO-ASPIRANTE SPRINT**

OBSERVATIONS

| POS | CODE | OBSERVATIONS |
|-----|--------------|---|
| 6 | * 4405010717 | POUR: 05090, 23043 |
| 8 | * 4405010106 | POUR: 05085, 05086, 05087, 05091, 05092, 05093, 23024 |
| 8 | * 4405010107 | POUR: 05088, 05089, 05090, 05094, 05095, 23043 |
| 14 | * 4405010115 | POUR: 05085, 05086, 05091, 05092, 23024 |
| 14 | * 4405010116 | POUR: 05087, 05088, 05089, 05093, 05094, 05095 |
| 14 | * 4405010117 | POUR: 05090, 23043 |
| 16 | * 4405010723 | POUR: 23024 50 HZ |
| 16 | * 4405010716 | POUR: 23024 60 HZ |
| 16 | * 4405010591 | POUR: 05091 50 HZ |
| 16 | * 4405010667 | POUR: 05091 60 HZ |
| 16 | * 4405010592 | POUR: 05085 50 HZ |
| 16 | * 4405010668 | POUR: 05085 60 HZ |
| 16 | * 4405010593 | POUR: 05092 50 HZ |
| 16 | * 4405010669 | POUR: 05092 60 HZ |
| 16 | * 4405010594 | POUR: 05086 50 HZ |
| 16 | * 4405010670 | POUR: 05086 60 HZ |
| 16 | * 4405010595 | POUR: 05093 50 HZ |
| 16 | * 4405010671 | POUR: 05093 60 HZ |
| 16 | * 4405010596 | POUR: 05087 50 HZ |
| 16 | * 4405010672 | POUR: 05087 60 HZ |
| 16 | * 4405010597 | POUR: 05094 50 HZ |
| 16 | * 4405010673 | POUR: 05094 60 HZ |
| 16 | * 4405010598 | POUR: 05088 50 HZ |
| 16 | * 4405010674 | POUR: 05088 60 HZ |
| 16 | * 4405010599 | POUR: 05095 50 HZ |
| 16 | * 4405010675 | POUR: 05095 60 HZ |
| 16 | * 4405010600 | POUR: 05089 50 HZ |
| 16 | * 4405010676 | POUR: 05089 60 HZ |
| 16 | * 4405010601 | POUR: 23043 50 HZ |
| 16 | * 4405010677 | POUR: 23043 60 HZ |
| 16 | * 4405010602 | POUR: 05090 50 HZ |
| 16 | * 4405010678 | POUR: 05090 60 HZ |
| 17 | * 4405010162 | POUR: 05085, 05086, 05087, 05088, 05089, 05091, 05092, 05093, 05094, 05095, 23024 |
| 18 | * 4405010103 | POUR: 05085, 05086, 05087, 05091, 05092, 05093, 23024 |
| 18 | * 4405010104 | POUR: 05088, 05089, 05090, 05094, 05095, 23043 |
| 23 | * 4405010130 | POUR: 05085, 05086, 05087, 05091, 05092, 05093, 23024 |
| 23 | * 4405010131 | POUR: 05088, 05089, 05090, 05094, 05095, 23043 |
| 24 | * 4405010163 | POUR: 05085, 05086, 05087, 05091, 05092, 05093, 23024 |
| 24 | * 4405010164 | POUR: 05088, 05089, 05090, 05094, 05095, 23043 |
| 25 | * 4405010158 | POUR: 05085, 05086, 05087, 05091, 05092, 05093, 23024 |
| 25 | * 4405010159 | POUR: 05088, 05089, 05090, 05094, 05095 |
| 25 | * 4405010176 | POUR: 23043 |
| 26 | * 4405010137 | POUR: 05085, 05091, 23024 |

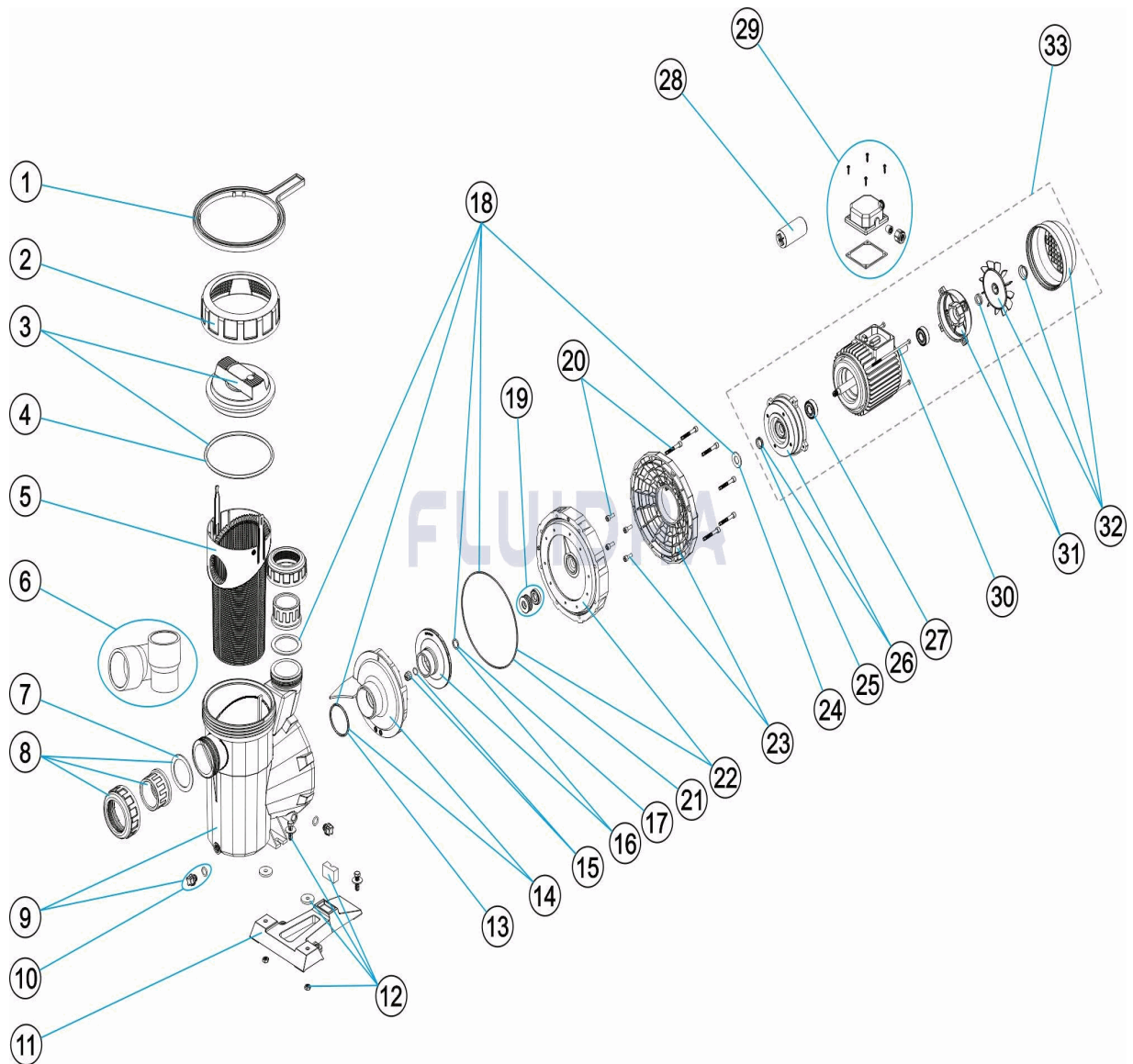
CODE **05085, 05086, 05087, 05088, 05089, 05090, 05091, 05092, 05093, 05094, 05095, 23024, 23043**

DESCRIPTION: **POMPE AUTO-ASPIRANTE SPRINT**

| | | |
|----|--------------|---|
| 26 | * 4405010138 | POUR: 05086, 05087, 05092, 05093 |
| 26 | * 4405010139 | POUR: 05088, 05089, 05090, 05094, 05095 |
| 26 | * 4405010167 | POUR: 23043 |
| 27 | * 4405010135 | POUR: 05085, 05086, 05087, 05091, 05092, 05093, 23024 |
| 27 | * 4405010136 | POUR: 05088, 05089, 05090, 05094, 05095 |
| 27 | * 4405010171 | POUR: 23043 |
| 28 | * 4405010149 | POUR: 05091 |
| 28 | * 4405020121 | POUR: 05092 |
| 28 | * 4405020122 | POUR: 05093 |
| 28 | * 4405010150 | POUR: 05094 |
| 28 | * 4405010174 | POUR: 05095 |
| 28 | * 4405010175 | POUR: 23043 |
| 29 | * 4405010154 | POUR: 05091, 05092, 05093, 23024 |
| 29 | * 4405010155 | POUR: 05094, 05095, 23043 |
| 29 | * 4405010156 | POUR: 05085, 05086, 05087 |
| 29 | * 4405010157 | POUR: 05088, 05089, 05090 |
| 30 | * 4405010143 | POUR: 05085, 05091, 23024 |
| 30 | * 4405010144 | POUR: 05086, 05087, 05092, 05093 |
| 30 | * 4405010145 | POUR: 05088, 05089, 05090, 05094, 05095 |
| 30 | * 4405010169 | POUR: 23043 |
| 31 | * 4405010140 | POUR: 05085, 05091, 23024 |
| 31 | * 4405010141 | POUR: 05086, 05087, 05092, 05093 |
| 31 | * 4405010142 | POUR: 05088, 05089, 05090, 05094, 05095 |
| 31 | * 4405010168 | POUR: 23043 |
| 32 | * 4405010146 | POUR: 05085, 05091, 23024 |
| 32 | * 4405010147 | POUR: 05086, 05087, 05092, 05093 |
| 32 | * 4405010148 | POUR: 05088, 05089, 05090, 05094, 05095 |
| 32 | * 4405010170 | POUR: 23043 |
| 33 | * 20597R0475 | POUR: 05091, 23024 |
| 33 | * 20598R0475 | POUR: 05085 |
| 33 | * 20599R0475 | POUR: 05092 |
| 33 | * 20600R0475 | POUR: 05086 |
| 33 | * 20601R0475 | POUR: 05093 |
| 33 | * 20602R0475 | POUR: 05087 |
| 33 | * 20603R0575 | POUR: 05094 |
| 33 | * 20604R0575 | POUR: 05088 |
| 33 | * 20605R0475 | POUR: 05095 |
| 33 | * 20606R0475 | POUR: 05089 |
| 33 | * 22341R0475 | POUR: 23043 |
| 33 | * 20607R0475 | POUR: 05090 |

CODE **05085, 05086, 05087, 05088, 05089, 05090, 05091, 05092, 05093, 05094, 05095, 23024, 23043**

DESCRIPTION: **SPRINT SELF-PRIMING PUMP**



ENGLISH

| POS | CODE | DESCRIPTION | QUANTITY | POS | CODE | DESCRIPTION | QUANTITY |
|-----|--------------|--------------------------------|----------|-----|--------------|--------------------------|----------|
| 1 | 4404130103 | LID SPANNER | | 14 | * 4405010116 | DIFFUSOR 1 HP - 2 HP | |
| 2 | 4404130101 | PRE-FILTER COVER NUT | | 14 | * 4405010117 | DIFFUSOR 2,5 - 3 HP | |
| 3 | 4405010702 | PRE-FILTER COVER | | 15 | 4405010134 | IMPELLER COVER M8 LEFT | |
| 4 | 4405010178 | O' RING D 151,7X6,99 | | 16 | * 4405010723 | IMPELLER 1/3 HP 50 HZ | |
| 5 | 4405010105 | PRE-FILTER BASKET | | 16 | * 4405010716 | IMPELLER 1/3 HP 60 HZ | |
| 6 | * 4405010717 | UNION FITTINGS 3 HP | | 16 | * 4405010591 | IMPELLER ¼ (II) HP | |
| 7 | 4405010179 | INLET GASKET 72X55X2,5 | | 16 | * 4405010667 | IMPELLER ½ (II) HP 60 HZ | |
| 8 | * 4405010106 | UNION FITTINGS <= 1 HP | | 16 | * 4405010592 | IMPELLER ½ (III) HP | |
| 8 | * 4405010107 | UNION FITTINGS 1,5 HP - 2,5 HP | | 16 | * 4405010668 | IMPELLER ½ (II) HP 60 HZ | |
| 9 | 4405010109 | PUMP HOUSING | | 16 | * 4405010593 | IMPELLER ¾ (II) HP | |
| 10 | 4405010110 | DRAIN PLUG " | | 16 | * 4405010669 | IMPELLER ¾ (II) HP 60 HZ | |
| 11 | 4405010207 | PUMP BASE | | 16 | * 4405010594 | IMPELLER ¾ (III) HP | |

*** SEE OBSERVATIONS SHEET**

CODE **05085, 05086, 05087, 05088, 05089, 05090, 05091, 05092, 05093, 05094, 05095, 23024, 23043**

DESCRIPTION: **SPRINT SELF-PRIMING PUMP**

| | | | | | |
|----|--------------|---------------------------------------|----|--------------|---|
| 12 | 4405010206 | PUMP BASE FITTINGS | 16 | * 4405010670 | IMPELLER ¾ (III) HP 60 HZ |
| 13 | 4405010161 | O' RING D. 56,7X3,5 | 16 | * 4405010595 | IMPELLER 1 (II) HP |
| 14 | * 4405010115 | DIFFUSEUR <=0,75 HP | 16 | * 4405010671 | IMPELLER 1 (II) HP 60 HZ |
| 16 | * 4405010596 | IMPELLER 1 (III) HP | 28 | * 4405010149 | CONDENSER 12 UF 1/2 CV |
| 16 | * 4405010672 | IMPELLER 1 (III) HP 60 HZ | 28 | * 4405020121 | CONDENSER 14 UF 3/4 CV |
| 16 | * 4405010597 | IMPELLER 1,5 (II) HP | 28 | * 4405020122 | CONDENSER 16 UF 1 CV |
| 16 | * 4405010673 | IMPELLER 1,5 (II) HP 60 HZ | 28 | * 4405010150 | CONDENSER 18 UF 1,5 CV |
| 16 | * 4405010598 | IMPELLER 1,5 (III) HP | 28 | * 4405010174 | CONDENSER 32 ?F 2 CV |
| 16 | * 4405010674 | IMPELLER 1,5 (III) HP 60 HZ | 28 | * 4405010175 | CONDENSER 40 ?F 2,5-3 CV |
| 16 | * 4405010599 | IMPELLER 2 (II) HP | 29 | * 4405010154 | TERMINAL BOX ASSEMBLY C. 63-71 II |
| 16 | * 4405010675 | IMPELLER 2 (II) HP 60 HZ | 29 | * 4405010155 | TERMINAL BOX ASSEMBLY (C 80-90) II (ANC |
| 16 | * 4405010600 | IMPELLER 2 (III) HP | 29 | * 4405010156 | TERMINAL BOX COVER C 63-71 III |
| 16 | * 4405010676 | IMPELLER 2 (III) HP 60 HZ | 29 | * 4405010157 | TERMINAL BOX ASSEMBLY C. 80-90 III |
| 16 | * 4405010601 | IMPELLER 3 (II) HP | 30 | * 4405010143 | MOTOR TIES C. 63 |
| 16 | * 4405010677 | IMPELLER 3 (II) HP 60 HZ | 30 | * 4405010144 | MOTOR TIES 0,75 - 1 HP |
| 16 | * 4405010602 | IMPELLER 3 (III) HP | 30 | * 4405010145 | MOTOR TIES 1,5 - 3 HP III |
| 16 | * 4405010678 | IMPELLER 3 (III) HP 60 HZ | 30 | * 4405010169 | MOTOR TIES (90) 3 HP II |
| 17 | * 4405010162 | DEFLECTOR WASHER (1/2-3/4-1-1,5-2 HP) | 31 | * 4405010140 | REAR MOTOR COVER 1/3 A 1/2 HP |
| 18 | * 4405010103 | GASKETS 0,5 HP - 2 HP | 31 | * 4405010141 | REAR MOTOR COVER 3/4 A 1 HP |
| 18 | * 4405010104 | GASKETS 3 HP | 31 | * 4405010142 | REAR MOTOR COVER 1,5 - 3 HP III |
| 19 | 4405010118 | MECHANICAL SEAL | 31 | * 4405010168 | REAR MOTOR COVER 2,5 - 3 HP II |
| 20 | 4405010133 | FLANGE SCREWS | 32 | * 4405010146 | FAN COVER ASSEMBLY 0,5 HP |
| 21 | 4405010160 | MOTOR CLAMP GASKET | 32 | * 4405010147 | FAN COVER ASSEMBLY 0,75 - 1 HP |
| 22 | 4405010132 | MECHANICAL SEAL PLATE | 32 | * 4405010148 | FAN COVER ASSEMBLY 1,5 - 2 - 3 HP III |
| 23 | * 4405010130 | MOTOR CLAMP <= 1 HP | 32 | * 4405010170 | FAN COVER ASSEMBLY 3 HP II |
| 23 | * 4405010131 | MOTOR CLAMP 1,5 HP - 3HP | 33 | * 20597R0475 | MOTOR 1/2 HP II |
| 24 | * 4405010163 | DEFLECTOR WASHER C.71 1/2-1 HP | 33 | * 20598R0475 | MOTOR 1/2 HP III |
| 24 | * 4405010164 | DEFLECTOR WASHER C.80 1,5-3 HP | 33 | * 20599R0475 | MOTOR 3/4 HP II |
| 25 | * 4405010158 | V-RINGS 0,5 HP - 1 HP | 33 | * 20600R0475 | MOTOR 3/4 HP III |
| 25 | * 4405010159 | V-RINGS 1,5 HP - 3 HP | 33 | * 20601R0475 | MOTOR 1 HP II |
| 25 | * 4405010176 | V-RINGS VA-2,5 - 3 HP II | 33 | * 20602R0475 | MOTOR 1 HP III |
| 26 | * 4405010137 | FRONT MOTOR COVER 0,5 HP | 33 | * 20603R0575 | MOTOR 1,5 HP II |
| 26 | * 4405010138 | FRONT MOTOR COVER 0,75 - 1 HP | 33 | * 20604R0575 | MOTOR 1,5 HP III |
| 26 | * 4405010139 | FRONT MOTOR COVER 1,5 3 HP III | 33 | * 20605R0475 | MOTOR 2 HP II |
| 26 | * 4405010167 | FRONT MOTOR COVER 2,5 3 HP II | 33 | * 20606R0475 | MOTOR 2 HP III |
| 27 | * 4405010135 | MOTOR BEARINGS < 1 HP | 33 | * 22341R0475 | MOTOR 3 HP II |
| 27 | * 4405010136 | MOTOR BEARINGS 1,5 HP - 3 HP | 33 | * 20607R0475 | MOTOR 3 HP III |
| 27 | * 4405010171 | BEARINGS ASSEMBLY 6205 2RS 3,5HP | | | |

CODE **05085, 05086, 05087, 05088, 05089, 05090, 05091, 05092, 05093, 05094, 05095, 23024, 23043**

DESCRIPTION: **SPRINT SELF-PRIMING PUMP**

OBSERVATIONS

| POS | CODE | OBSERVATIONS |
|-----|--------------|--|
| 6 | * 4405010717 | FOR: 05090, 23043 |
| 8 | * 4405010106 | FOR: 05085, 05086, 05087, 05091, 05092, 05093, 23024 |
| 8 | * 4405010107 | FOR: 05088, 05089, 05090, 05094, 05095, 23043 |
| 14 | * 4405010115 | FOR: 05085, 05086, 05091, 05092, 23024 |
| 14 | * 4405010116 | FOR: 05087, 05088, 05089, 05093, 05094, 05095 |
| 14 | * 4405010117 | FOR: 05090, 23043 |
| 16 | * 4405010723 | FOR: 23024 50 HZ |
| 16 | * 4405010716 | FOR: 23024 60 HZ |
| 16 | * 4405010591 | FOR: 05091 50 HZ |
| 16 | * 4405010667 | FOR: 05091 60 HZ |
| 16 | * 4405010592 | FOR: 05085 50 HZ |
| 16 | * 4405010668 | FOR: 05085 60 HZ |
| 16 | * 4405010593 | FOR: 05092 50 HZ |
| 16 | * 4405010669 | FOR: 05092 60 HZ |
| 16 | * 4405010594 | FOR: 05086 50 HZ |
| 16 | * 4405010670 | FOR: 05086 60 HZ |
| 16 | * 4405010595 | FOR: 05093 50 HZ |
| 16 | * 4405010671 | FOR: 05093 60 HZ |
| 16 | * 4405010596 | FOR: 05087 50 HZ |
| 16 | * 4405010672 | FOR: 05087 60 HZ |
| 16 | * 4405010597 | FOR: 05094 50 HZ |
| 16 | * 4405010673 | FOR: 05094 60 HZ |
| 16 | * 4405010598 | FOR: 05088 50 HZ |
| 16 | * 4405010674 | FOR: 05088 60 HZ |
| 16 | * 4405010599 | FOR: 05095 50 HZ |
| 16 | * 4405010675 | FOR: 05095 60 HZ |
| 16 | * 4405010600 | FOR: 05089 50 HZ |
| 16 | * 4405010676 | FOR: 05089 60 HZ |
| 16 | * 4405010601 | FOR: 23043 50 HZ |
| 16 | * 4405010677 | FOR: 23043 60 HZ |
| 16 | * 4405010602 | FOR: 05090 50 HZ |
| 16 | * 4405010678 | FOR: 05090 60 HZ |
| 17 | * 4405010162 | FOR: 05085, 05086, 05087, 05088, 05089, 05091, 05092, 05093, 05094, 05095, 23024 |
| 18 | * 4405010103 | FOR: 05085, 05086, 05087, 05091, 05092, 05093, 23024 |
| 18 | * 4405010104 | FOR: 05088, 05089, 05090, 05094, 05095, 23043 |
| 23 | * 4405010130 | FOR: 05085, 05086, 05087, 05091, 05092, 05093, 23024 |
| 23 | * 4405010131 | FOR: 05088, 05089, 05090, 05094, 05095, 23043 |
| 24 | * 4405010163 | FOR: 05085, 05086, 05087, 05091, 05092, 05093, 23024 |
| 24 | * 4405010164 | FOR: 05088, 05089, 05090, 05094, 05095, 23043 |
| 25 | * 4405010158 | FOR: 05085, 05086, 05087, 05091, 05092, 05093, 23024 |
| 25 | * 4405010159 | FOR: 05088, 05089, 05090, 05094, 05095 |
| 25 | * 4405010176 | FOR: 23043 |
| 26 | * 4405010137 | FOR: 05085, 05091, 23024 |

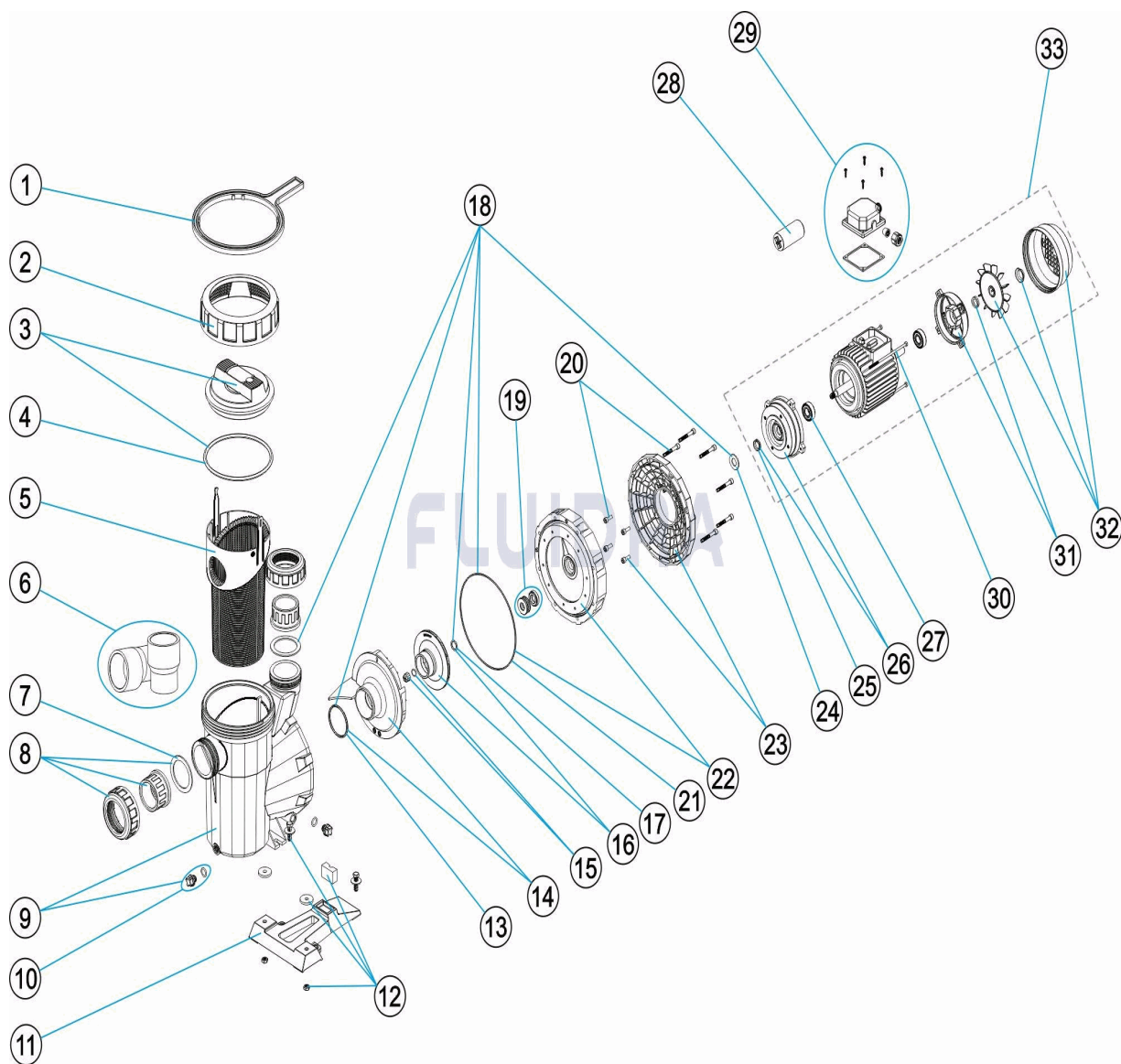
CODE **05085, 05086, 05087, 05088, 05089, 05090, 05091, 05092, 05093, 05094,
05095, 23024, 23043**

DESCRIPTION: **SPRINT SELF-PRIMING PUMP**

| | | |
|----|--------------|--|
| 26 | * 4405010138 | FOR: 05086, 05087, 05092, 05093 |
| 26 | * 4405010139 | FOR: 05088, 05089, 05090, 05094, 05095 |
| 26 | * 4405010167 | FOR: 23043 |
| 27 | * 4405010135 | FOR: 05085, 05086, 05087, 05091, 05092, 05093, 23024 |
| 27 | * 4405010136 | FOR: 05088, 05089, 05090, 05094, 05095 |
| 27 | * 4405010171 | FOR: 23043 |
| 28 | * 4405010149 | FOR: 05091 |
| 28 | * 4405020121 | FOR: 05092 |
| 28 | * 4405020122 | FOR: 05093 |
| 28 | * 4405010150 | FOR: 05094 |
| 28 | * 4405010174 | FOR: 05095 |
| 28 | * 4405010175 | FOR: 23043 |
| 29 | * 4405010154 | FOR: 05091, 05092, 05093, 23024 |
| 29 | * 4405010155 | FOR: 05094, 05095, 23043 |
| 29 | * 4405010156 | FOR: 05085, 05086, 05087 |
| 29 | * 4405010157 | FOR: 05088, 05089, 05090 |
| 30 | * 4405010143 | FOR: 05085, 05091, 23024 |
| 30 | * 4405010144 | FOR: 05086, 05087, 05092, 05093 |
| 30 | * 4405010145 | FOR: 05088, 05089, 05090, 05094, 05095 |
| 30 | * 4405010169 | FOR: 23043 |
| 31 | * 4405010140 | FOR: 05085, 05091, 23024 |
| 31 | * 4405010141 | FOR: 05086, 05087, 05092, 05093 |
| 31 | * 4405010142 | FOR: 05088, 05089, 05090, 05094, 05095 |
| 31 | * 4405010168 | FOR: 23043 |
| 32 | * 4405010146 | FOR: 05085, 05091, 23024 |
| 32 | * 4405010147 | FOR: 05086, 05087, 05092, 05093 |
| 32 | * 4405010148 | FOR: 05088, 05089, 05090, 05094, 05095 |
| 32 | * 4405010170 | FOR: 23043 |
| 33 | * 20597R0475 | FOR: 05091, 23024 |
| 33 | * 20598R0475 | FOR: 05085 |
| 33 | * 20599R0475 | FOR: 05092 |
| 33 | * 20600R0475 | FOR: 05086 |
| 33 | * 20601R0475 | FOR: 05093 |
| 33 | * 20602R0475 | FOR: 05087 |
| 33 | * 20603R0575 | FOR: 05094 |
| 33 | * 20604R0575 | FOR: 05088 |
| 33 | * 20605R0475 | FOR: 05095 |
| 33 | * 20606R0475 | FOR: 05089 |
| 33 | * 22341R0475 | FOR: 23043 |
| 33 | * 20607R0475 | FOR: 05090 |

CODICE 05085, 05086, 05087, 05088, 05089, 05090, 05091, 05092, 05093, 05094, 05095, 23024, 23043

DESCRIZIONE: POMPA AUTO-ASPIRANTE SPRINT



ITALIANO

| POS | CODICE | DESCRIZIONE | QUANTITA' | POS | CODICE | DESCRIZIONE | QUANTITA' |
|-----|--------------|-------------------------------------|-----------|-----|--------------|--------------------------|-----------|
| 1 | 4404130103 | CHIAVE GHIERA PER FILTRO | | 14 | * 4405010116 | DIFFUSORE 1 HP - 2 HP | |
| 2 | 4404130101 | VITE COPERCHIO PREFILTRO | | 14 | * 4405010117 | DIFFUSORE 2.5 - 3 HP | |
| 3 | 4405010702 | COPERCHIO PREFILTRO | | 15 | 4405010134 | TAPPO RUOTA M8 SIN. | |
| 4 | 4405010178 | O-RING D 151,7X6,99 | | 16 | * 4405010723 | RUOTA 1/3 HP 50 HZ | |
| 5 | 4405010105 | CESTO PREFILTRO | | 16 | * 4405010716 | RUOTA 1/3 HP 60 HZ | |
| 6 | * 4405010717 | MANICOTTI DI UNIONE 3 HP | | 16 | * 4405010591 | RUOTA 1/2 (II) HP | |
| 7 | 4405010179 | GUERNICIONE PIANA 72X55X2,5 | | 16 | * 4405010667 | RUOTA 1/2 (II) HP 60 HZ | |
| 8 | * 4405010106 | MANICOTTI DI UNIONE <= 1 HP | | 16 | * 4405010592 | RUOTA 1/2 (III) HP | |
| 8 | * 4405010107 | MANICOTTI DI UNIONE 1,5 HP - 2,5 HP | | 16 | * 4405010668 | RUOTA 1/2 (III) HP 60 HZ | |
| 9 | 4405010109 | CORPO POMBA | | 16 | * 4405010593 | RUOTA 3/4 (II) HP | |
| 10 | 4405010110 | TAPPO SCARICO " | | 16 | * 4405010669 | RUOTA 3/4 (II) HP 60 HZ | |
| 11 | 4405010207 | PIEDE POMPA | | 16 | * 4405010594 | RUOTA 3/4 (III) HP | |

* SI FACCIA RIFERIMENTO AL FOGLIO DELLE OSSERVAZIONI

CODICE **05085, 05086, 05087, 05088, 05089, 05090, 05091, 05092, 05093, 05094, 05095, 23024, 23043**

DESCRIZIONE: POMPA AUTO-ASPIRANTE SPRINT

| | | | | | |
|----|--------------|--|----|--------------|---|
| 12 | 4405010206 | UNIONE PARTE IDRAULICA-BASE POMP# | 16 | * 4405010670 | RUOTA ¼ (III) HP 60 HZ |
| 13 | 4405010161 | O-RING D 56,7X3,5 | 16 | * 4405010595 | RUOTA 1 (II) HP |
| 14 | * 4405010115 | DIFFUSORE <=0,75 HP | 16 | * 4405010671 | RUOTA 1 (II) HP 60 HZ |
| 16 | * 4405010596 | RUOTA 1 (III) HP | 28 | * 4405010149 | CONDENSATORE 12 UF 1/2 CV |
| 16 | * 4405010672 | RUOTA 1 (III) HP 60 HZ | 28 | * 4405020121 | CONDENSATORE 14 UF 3/4 CV |
| 16 | * 4405010597 | RUOTA 1,5 (II) HP | 28 | * 4405020122 | CONDENSATORE 16 UF 1 CV |
| 16 | * 4405010673 | RUOTA 1,5 (II) HP 60 HZ | 28 | * 4405010150 | CONDENSATORE 18 UF 1,5 CV |
| 16 | * 4405010598 | RUOTA 1,5 (III) HP | 28 | * 4405010174 | CONDENSATORE 32 ?F 2 CV |
| 16 | * 4405010674 | RUOTA 1,5 (III) HP 60 HZ | 28 | * 4405010175 | CONDENSATORE 40 ?F 2,5-3 CV |
| 16 | * 4405010599 | RUOTA 2 (II) HP | 29 | * 4405010154 | GRUPPO MORSETTIERA C. 63-71 II |
| 16 | * 4405010675 | RUOTA 2 (II) HP 60 HZ | 29 | * 4405010155 | GRUPPO MORSETTIERA (C 80-90) II (ANDIA |
| 16 | * 4405010600 | RUOTA 2 (III) HP | 29 | * 4405010156 | COPERCHIO MORSETTIERA C 63-71 III |
| 16 | * 4405010676 | RUOTA 2 (III) HP 60 HZ | 29 | * 4405010157 | GRUPPO MORSETTIERA C.80-90 III |
| 16 | * 4405010601 | RUOTA 3 (II) HP | 30 | * 4405010143 | ASTAS MOTORE C. 63 |
| 16 | * 4405010677 | RUOTA 3 (II) HP 60 HZ | 30 | * 4405010144 | ASTAS MOTORE 0,75 - 1 HP |
| 16 | * 4405010602 | RUOTA 3 (III) HP | 30 | * 4405010145 | ASTAS MOTORE 1,5 - 3 HP III |
| 16 | * 4405010678 | RUOTA 3 (III) HP 60 HZ | 30 | * 4405010169 | ASTAS MOTORE (90) 3 HP II |
| 17 | * 4405010162 | RONDELLA DEFLETTTRICE (1/2-3/4-1-1,5-2 † | 31 | * 4405010140 | COPERCHIO POSTERIORE MOTORE 1/3 A` |
| 18 | * 4405010103 | GUARNIZIONI 0,5 HP - 2 HP | 31 | * 4405010141 | COPERCHIO POSTERIORE MOTORE 3/4 A` |
| 18 | * 4405010104 | GUARNIZIONI 3 HP | 31 | * 4405010142 | COPERCHIO POSTERIORE MOTORE 1,5 - 3 |
| 19 | 4405010118 | GUARNIZIONE MECCANICA | 31 | * 4405010168 | COPERCHIO POSTERIORE MOTORE 2,5 - 3 |
| 20 | 4405010133 | BUTIONERIA FLANGIA MOTORE | 32 | * 4405010146 | KIT VENTOLA-COPRIVENTOLA 0,5 HP |
| 21 | 4405010160 | GUARNIZIONE FLANGIA MOTORE | 32 | * 4405010147 | KIT VENTOLA-COPRIVENTOLA 0,75 - 1 HP |
| 22 | 4405010132 | FLANGIA TENUTA MECCANICA | 32 | * 4405010148 | KIT VENTOLA-COPRIVENTOLA 1,5 - 2 - 3 HF |
| 23 | * 4405010130 | FLANGIA MOTORE <= 1 HP | 32 | * 4405010170 | KIT VENTOLA-COPRIVENTOLA 3 HP II |
| 23 | * 4405010131 | FLANGIA MOTORE 1,5 HP - 3HP | 33 | * 20597R0475 | MOTOR 1/2 HP II |
| 24 | * 4405010163 | RONDELLA DEFLETTTRICE C,71 1/2-1 HP | 33 | * 20598R0475 | MOTOR 1/2 HP III |
| 24 | * 4405010164 | RONDELLA DEFLETTTRICE C.80 1,5-3 HP | 33 | * 20599R0475 | MOTOR 3/4 HP II |
| 25 | * 4405010158 | V-RINGS 0,5 HP - 1 HP | 33 | * 20600R0475 | MOTOR 3/4 HP III |
| 25 | * 4405010159 | V-RINGS 1,5 HP - 3 HP | 33 | * 20601R0475 | MOTOR 1 HP III |
| 25 | * 4405010176 | V-RINGS VA-2,5 - 3 HP II | 33 | * 20602R0475 | MOTOR 1 HP III |
| 26 | * 4405010137 | COPERCHIO ANTERIORE MOTORE 0,5 HP | 33 | * 20603R0575 | MOTOR 1,5 HP II |
| 26 | * 4405010138 | COPERCHIO ANTERIORE MOTORE 0,75 - 1 | 33 | * 20604R0575 | MOTOR 1,5 HP III |
| 26 | * 4405010139 | COPERCHIO ANTERIORE MOTORE 1,5 - 3 † | 33 | * 20605R0475 | MOTOR 2 HP II |
| 26 | * 4405010167 | COPERCHIO ANTERIORE MOTORE 2,5 - 3 † | 33 | * 20606R0475 | MOTOR 2 HP III |
| 27 | * 4405010135 | CUSCINETTO MOTORE < 1 HP | 33 | * 22341R0475 | MOTOR 3 HP II |
| 27 | * 4405010136 | CUSCINETTO MOTORE 1,5 HP - 3 HP | 33 | * 20607R0475 | MOTOR 3 HP III |
| 27 | * 4405010171 | KIT ROLAMENTO 6205 2RS 3,5HP | | | |

CODICE **05085, 05086, 05087, 05088, 05089, 05090, 05091, 05092, 05093, 05094, 05095, 23024, 23043**

DESCRIZIONE: POMPA AUTO-ASPIRANTE SPRINT

OSSERVAZIONI

| POS | CODICE | OSSERVAZIONI |
|-----|--------------|--|
| 6 | * 4405010717 | PER: 05090, 23043 |
| 8 | * 4405010106 | PER: 05085, 05086, 05087, 05091, 05092, 05093, 23024 |
| 8 | * 4405010107 | PER: 05088, 05089, 05090, 05094, 05095, 23043 |
| 14 | * 4405010115 | PER: 05085, 05086, 05091, 05092, 23024 |
| 14 | * 4405010116 | PER: 05087, 05088, 05089, 05093, 05094, 05095 |
| 14 | * 4405010117 | PER: 05090, 23043 |
| 16 | * 4405010723 | PER: 23024 50 HZ |
| 16 | * 4405010716 | PER: 23024 60 HZ |
| 16 | * 4405010591 | PER: 05091 50 HZ |
| 16 | * 4405010667 | PER: 05091 60 HZ |
| 16 | * 4405010592 | PER: 05085 50 HZ |
| 16 | * 4405010668 | PER: 05085 60 HZ |
| 16 | * 4405010593 | PER: 05092 50 HZ |
| 16 | * 4405010669 | PER: 05092 60 HZ |
| 16 | * 4405010594 | PER: 05086 50 HZ |
| 16 | * 4405010670 | PER: 05086 60 HZ |
| 16 | * 4405010595 | PER: 05093 50 HZ |
| 16 | * 4405010671 | PER: 05093 60 HZ |
| 16 | * 4405010596 | PER: 05087 50 HZ |
| 16 | * 4405010672 | PER: 05087 60 HZ |
| 16 | * 4405010597 | PER: 05094 50 HZ |
| 16 | * 4405010673 | PER: 05094 60 HZ |
| 16 | * 4405010598 | PER: 05088 50 HZ |
| 16 | * 4405010674 | PER: 05088 60 HZ |
| 16 | * 4405010599 | PER: 05095 50 HZ |
| 16 | * 4405010675 | PER: 05095 60 HZ |
| 16 | * 4405010600 | PER: 05089 50 HZ |
| 16 | * 4405010676 | PER: 05089 60 HZ |
| 16 | * 4405010601 | PER: 23043 50 HZ |
| 16 | * 4405010677 | PER: 23043 60 HZ |
| 16 | * 4405010602 | PER: 05090 50 HZ |
| 16 | * 4405010678 | PER: 05090 60 HZ |
| 17 | * 4405010162 | PER: 05085, 05086, 05087, 05088, 05089, 05091, 05092, 05093, 05094, 05095, 23024 |
| 18 | * 4405010103 | PER: 05085, 05086, 05087, 05091, 05092, 05093, 23024 |
| 18 | * 4405010104 | PER: 05088, 05089, 05090, 05094, 05095, 23043 |
| 23 | * 4405010130 | PER: 05085, 05086, 05087, 05091, 05092, 05093, 23024 |
| 23 | * 4405010131 | PER: 05088, 05089, 05090, 05094, 05095, 23043 |
| 24 | * 4405010163 | PER: 05085, 05086, 05087, 05091, 05092, 05093, 23024 |
| 24 | * 4405010164 | PER: 05088, 05089, 05090, 05094, 05095, 23043 |
| 25 | * 4405010158 | PER: 05085, 05086, 05087, 05091, 05092, 05093, 23024 |
| 25 | * 4405010159 | PER: 05088, 05089, 05090, 05094, 05095 |
| 25 | * 4405010176 | PER: 23043 |
| 26 | * 4405010137 | PER: 05085, 05091, 23024 |

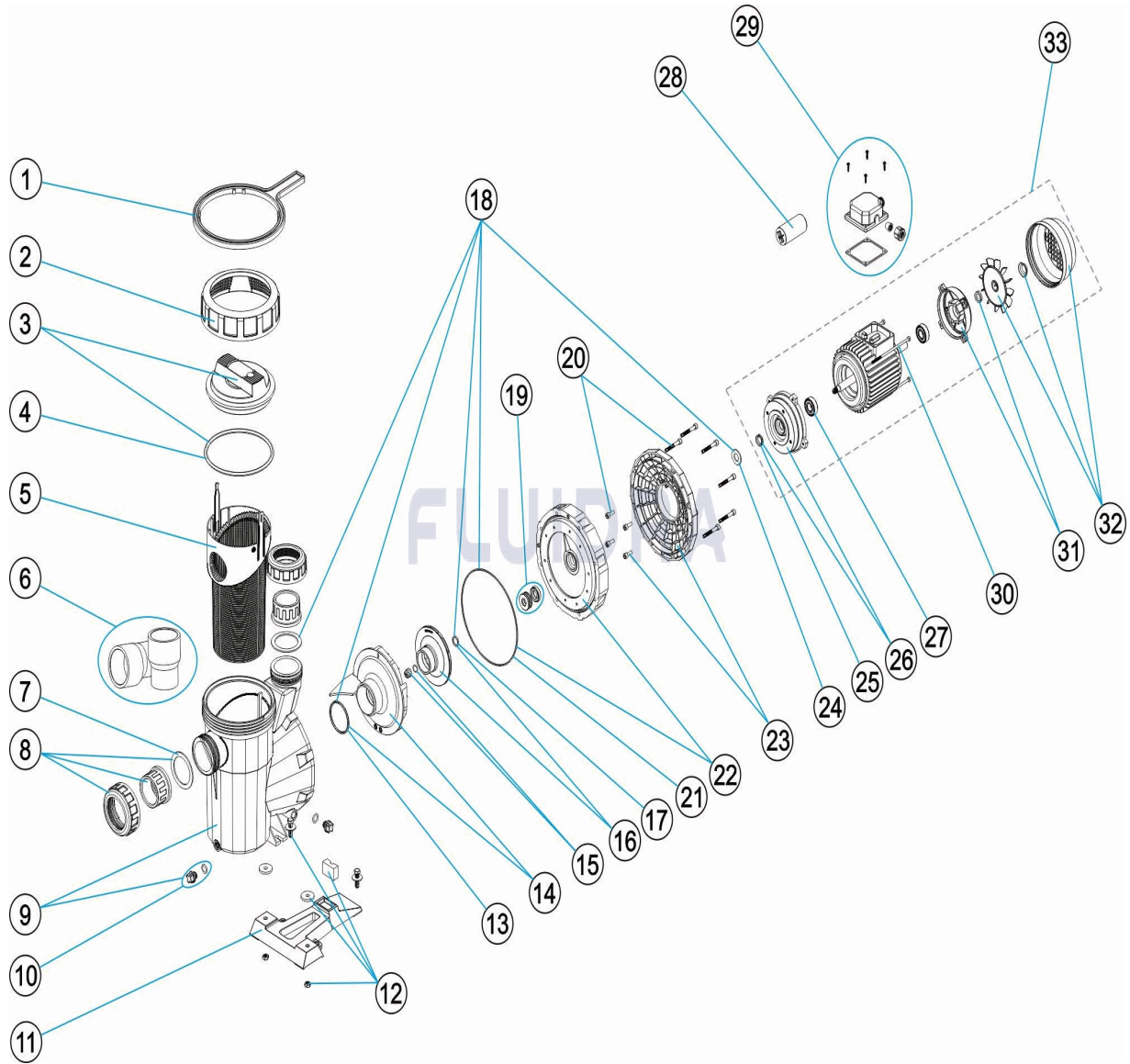
CODICE **05085, 05086, 05087, 05088, 05089, 05090, 05091, 05092, 05093, 05094, 05095, 23024, 23043**

DESCRIZIONE: POMPA AUTO-ASPIRANTE SPRINT

| | | |
|----|--------------|--|
| 26 | * 4405010138 | PER: 05086, 05087, 05092, 05093 |
| 26 | * 4405010139 | PER: 05088, 05089, 05090, 05094, 05095 |
| 26 | * 4405010167 | PER: 23043 |
| 27 | * 4405010135 | PER: 05085, 05086, 05087, 05091, 05092, 05093, 23024 |
| 27 | * 4405010136 | PER: 05088, 05089, 05090, 05094, 05095 |
| 27 | * 4405010171 | PER: 23043 |
| 28 | * 4405010149 | PER: 05091 |
| 28 | * 4405020121 | PER: 05092 |
| 28 | * 4405020122 | PER: 05093 |
| 28 | * 4405010150 | PER: 05094 |
| 28 | * 4405010174 | PER: 05095 |
| 28 | * 4405010175 | PER: 23043 |
| 29 | * 4405010154 | PER: 05091, 05092, 05093, 23024 |
| 29 | * 4405010155 | PER: 05094, 05095, 23043 |
| 29 | * 4405010156 | PER: 05085, 05086, 05087 |
| 29 | * 4405010157 | PER: 05088, 05089, 05090 |
| 30 | * 4405010143 | PER: 05085, 05091, 23024 |
| 30 | * 4405010144 | PER: 05086, 05087, 05092, 05093 |
| 30 | * 4405010145 | PER: 05088, 05089, 05090, 05094, 05095 |
| 30 | * 4405010169 | PER: 23043 |
| 31 | * 4405010140 | PER: 05085, 05091, 23024 |
| 31 | * 4405010141 | PER: 05086, 05087, 05092, 05093 |
| 31 | * 4405010142 | PER: 05088, 05089, 05090, 05094, 05095 |
| 31 | * 4405010168 | PER: 23043 |
| 32 | * 4405010146 | PER: 05085, 05091, 23024 |
| 32 | * 4405010147 | PER: 05086, 05087, 05092, 05093 |
| 32 | * 4405010148 | PER: 05088, 05089, 05090, 05094, 05095 |
| 32 | * 4405010170 | PER: 23043 |
| 33 | * 20597R0475 | PER: 05091, 23024 |
| 33 | * 20598R0475 | PER: 05085 |
| 33 | * 20599R0475 | PER: 05092 |
| 33 | * 20600R0475 | PER: 05086 |
| 33 | * 20601R0475 | PER: 05093 |
| 33 | * 20602R0475 | PER: 05087 |
| 33 | * 20603R0575 | PER: 05094 |
| 33 | * 20604R0575 | PER: 05088 |
| 33 | * 20605R0475 | PER: 05095 |
| 33 | * 20606R0475 | PER: 05089 |
| 33 | * 22341R0475 | PER: 23043 |
| 33 | * 20607R0475 | PER: 05090 |

CODE **05085, 05086, 05087, 05088, 05089, 05090, 05091, 05092, 05093, 05094, 05095, 23024, 23043**

BESCHREIBUNG: **PUMPE SELBSTANSAUGEND SPRINT**



DEUTSCH

| POS | CODE | BESCHREIBUNG | MENGE | POS | CODE | BESCHREIBUNG | MENGE |
|-----|--------------|----------------------------------|-------|-----|--------------|-----------------------------|-------|
| 1 | 4404130103 | SCHLÜSSEL MUTTER FILTER | | 14 | * 4405010116 | WASSERVERTEILER 1 HP - 2 HP | |
| 2 | 4404130101 | MUTTER VORFILTERDECKEL | | 14 | * 4405010117 | WASSERVERTEILER 2,5 - 3 HP | |
| 3 | 4405010702 | VORFILTERDECKEL | | 15 | 4405010134 | STOPFEN LAUFRAD M8 LINKS | |
| 4 | 4405010178 | O-RING D. 151,7 X 6,99 | | 16 | * 4405010723 | LAUFRAD 1/3 HP 50 HZ | |
| 5 | 4405010105 | VORFILTERKORB | | 16 | * 4405010716 | LAUFRAD 1/3 HP 60 HZ | |
| 6 | * 4405010717 | ANSCHLUSSZUBEHÖR 3 HP | | 16 | * 4405010591 | LAUFRAD ½ (II) HP | |
| 7 | 4405010179 | FLACHDICHTUNG 72 X 55 X 2,5 | | 16 | * 4405010667 | LAUFRAD ½ (II) HP 60 HZ | |
| 8 | * 4405010106 | ANSCHLUSSZUBEHÖR <= 1 HP | | 16 | * 4405010592 | LAUFRAD ½ (III) HP | |
| 8 | * 4405010107 | ANSCHLUSSZUBEHÖR 1,5 HP - 2,5 HP | | 16 | * 4405010668 | LAUFRAD ½ (III) HP 60 HZ | |
| 9 | 4405010109 | PUMPENGHÄUSE | | 16 | * 4405010593 | LAUFRAD ¾ (II) HP | |
| 10 | 4405010110 | ABLASSSTOPFEN " | | 16 | * 4405010669 | LAUFRAD ¾ (II) HP 60 HZ | |
| 11 | 4405010207 | PUMPENFUSS | | 16 | * 4405010594 | LAUFRAD ¾ (III) HP | |

* SIEHE ANMERKUNGSBLATT

CODE **05085, 05086, 05087, 05088, 05089, 05090, 05091, 05092, 05093, 05094, 05095, 23024, 23043**

BESCHREIBUNG: **PUMPE SELBSTANSAUGEND SPRINT**

| | | | | | |
|----|--------------|---|----|--------------|--|
| 12 | 4405010206 | VERBINDUNG HYDRAULIK-FUSS | 16 | * 4405010670 | LAUFRAD ¾ (III) HP 60 HZ |
| 13 | 4405010161 | O-RING D. 56,7 X 3,5 | 16 | * 4405010595 | LAUFRAD 1 (II) HP |
| 14 | * 4405010115 | WASSERVERTEILER <=0,75 HP | 16 | * 4405010671 | LAUFRAD 1 (II) HP 60 HZ |
| 16 | * 4405010596 | LAUFRAD 1 (III) HP | 28 | * 4405010149 | KONDENSATOR 12 UF 1/2 CV |
| 16 | * 4405010672 | LAUFRAD 1 (III) HP 60 HZ | 28 | * 4405020121 | KONDENSATOR 14 UF 3/4 CV |
| 16 | * 4405010597 | LAUFRAD 1,5 (II) HP | 28 | * 4405020122 | KONDENSATOR 16 UF 1 CV |
| 16 | * 4405010673 | LAUFRAD 1,5 (II) HP 60 HZ | 28 | * 4405010150 | KONDENSATOR 18 UF 1,5 CV |
| 16 | * 4405010598 | LAUFRAD 1,5 (III) HP | 28 | * 4405010174 | KONDENSATOR 32 UF 2 CV |
| 16 | * 4405010674 | LAUFRAD 1,5 (III) HP 60 HZ | 28 | * 4405010175 | KONDENSATOR 40 UF 2,5 - 3 CV |
| 16 | * 4405010599 | LAUFRAD 2 (II) HP | 29 | * 4405010154 | SET KLEMMSCHRANK C. 63 - 71 II |
| 16 | * 4405010675 | LAUFRAD 2 (II) HP 60 HZ | 29 | * 4405010155 | SET KLEMMSCHRANK (C 80 - 90) II (ANDIA) |
| 16 | * 4405010600 | LAUFRAD 2 (III) HP | 29 | * 4405010156 | SET KLEMMSCHRANK C.63 - 71 III |
| 16 | * 4405010676 | LAUFRAD 2 (III) HP 60 HZ | 29 | * 4405010157 | SET KLEMMSCHRANK C.80 - 90 III |
| 16 | * 4405010601 | LAUFRAD 3 (II) HP | 30 | * 4405010143 | RUNDEISEN MOTOR C. 63 |
| 16 | * 4405010677 | LAUFRAD 3 (II) HP 60 HZ | 30 | * 4405010144 | RUNDEISEN MOTOR 0,75 - 1 HP |
| 16 | * 4405010602 | LAUFRAD 3 (III) HP | 30 | * 4405010145 | RUNDEISEN MOTOR 1,5 - 3 HP III |
| 16 | * 4405010678 | LAUFRAD 3 (III) HP 60 HZ | 30 | * 4405010169 | RUNDEISEN MOTOR (90) 3 HP II |
| 17 | * 4405010162 | DISTANZSCHEIBE (1/2 - 3/4 - 1 - 1,5 - 2 HP) | 31 | * 4405010140 | MOTORDECKEL HINTEN 1/3 - 1/2 HP |
| 18 | * 4405010103 | GUMMIDICHTUNGEN 0,5 HP 2 HP | 31 | * 4405010141 | MOTORDECKEL HINTEN 3/4 - 1 HP |
| 18 | * 4405010104 | GUMMIDICHTUNGEN 3 HP | 31 | * 4405010142 | MOTORDECKEL HINTEN 1,5 - 3 HP III |
| 19 | 4405010118 | GLEITRINGDICHTUNG | 31 | * 4405010168 | MOTORDECKEL HINTEN 2,5 - 3 HP II |
| 20 | 4405010133 | SCHRAUBENSATZ MOTORFLANSCH | 32 | * 4405010146 | SET VENTILATOR - ABDECKUNG 0,5 HP |
| 21 | 4405010160 | DICHTUNG MOTORFLANSCH | 32 | * 4405010147 | SET VENTILATOR - ABDECKUNG 0,75 - 1 HF |
| 22 | 4405010132 | GLEITRINGDICHTUNG | 32 | * 4405010148 | SET VENTILATOR - ABDECKUNG 1,5 - 2 - 3 I |
| 23 | * 4405010130 | MOTORFLANSCH <= 1 HP | 32 | * 4405010170 | SET VENTILATOR - ABDECKUNG 3 HP II |
| 23 | * 4405010131 | MOTORFLANSCH 1,5 HP - 3 HP | 33 | * 20597R0475 | MOTOR 1/2 HP II |
| 24 | * 4405010163 | BEILAGSCHEIBE C,71 1/2 - 1 HP | 33 | * 20598R0475 | MOTOR 1/2 HP III |
| 24 | * 4405010164 | BEILAGSCHEIBE C,80 1,5 - 3 HP | 33 | * 20599R0475 | MOTOR 3/4 HP II |
| 25 | * 4405010158 | DICHTUNGSRINGE 0,5 HP - 1 HP | 33 | * 20600R0475 | MOTOR 3/4 HP III |
| 25 | * 4405010159 | DICHTUNGSRINGE 1,5 HP - 3 HP | 33 | * 20601R0475 | MOTOR 1 HP II |
| 25 | * 4405010176 | DICHTUNGSRING VA - 2,5 - 3 HP II | 33 | * 20602R0475 | MOTOR 1 HP III |
| 26 | * 4405010137 | MOTORDECKEL VORNE 0,5 HP | 33 | * 20603R0575 | MOTOR 1,5 HP II |
| 26 | * 4405010138 | MOTORDECKEL VORNE 0,75 - 1 HP | 33 | * 20604R0575 | MOTOR 1,5 HP III |
| 26 | * 4405010139 | MOTORDECKEL VORNE 1,5 - 3 HP III | 33 | * 20605R0475 | MOTOR 2 HP II |
| 26 | * 4405010167 | MOTORDECKEL VORNE 2,5 - 3 HP II | 33 | * 20606R0475 | MOTOR 2 HP III |
| 27 | * 4405010135 | WÄLZLAGER MOTOR < 1 HP | 33 | * 22341R0475 | MOTOR 3 HP II |
| 27 | * 4405010136 | WÄLZLAGER MOTOR 1,5 HP - 3 HP | 33 | * 20607R0475 | MOTOR 3 HP III |
| 27 | * 4405010171 | SET WÄLZLAGER 6205 2RS 3,5 HP | | | |

CODE **05085, 05086, 05087, 05088, 05089, 05090, 05091, 05092, 05093, 05094, 05095, 23024, 23043**

BESCHREIBUNG: **PUMPE SELBSTANSAUGEND SPRINT**

HINWEISE

| POS | CODE | HINWEISE |
|-----|--------------|--|
| 6 | * 4405010717 | FÜR: 05090, 23043 |
| 8 | * 4405010106 | FÜR: 05085, 05086, 05087, 05091, 05092, 05093, 23024 |
| 8 | * 4405010107 | FÜR: 05088, 05089, 05090, 05094, 05095, 23043 |
| 14 | * 4405010115 | FÜR: 05085, 05086, 05091, 05092, 23024 |
| 14 | * 4405010116 | FÜR: 05087, 05088, 05089, 05093, 05094, 05095 |
| 14 | * 4405010117 | FÜR: 05090, 23043 |
| 16 | * 4405010723 | FÜR: 23024 50 HZ |
| 16 | * 4405010716 | FÜR: 23024 60 HZ |
| 16 | * 4405010591 | FÜR: 05091 50 HZ |
| 16 | * 4405010667 | FÜR: 05091 60 HZ |
| 16 | * 4405010592 | FÜR: 05085 50 HZ |
| 16 | * 4405010668 | FÜR: 05085 60 HZ |
| 16 | * 4405010593 | FÜR: 05092 50 HZ |
| 16 | * 4405010669 | FÜR: 05092 60 HZ |
| 16 | * 4405010594 | FÜR: 05086 50 HZ |
| 16 | * 4405010670 | FÜR: 05086 60 HZ |
| 16 | * 4405010595 | FÜR: 05093 50 HZ |
| 16 | * 4405010671 | FÜR: 05093 60 HZ |
| 16 | * 4405010596 | FÜR: 05087 50 HZ |
| 16 | * 4405010672 | FÜR: 05087 60 HZ |
| 16 | * 4405010597 | FÜR: 05094 50 HZ |
| 16 | * 4405010673 | FÜR: 05094 60 HZ |
| 16 | * 4405010598 | FÜR: 05088 50 HZ |
| 16 | * 4405010674 | FÜR: 05088 60 HZ |
| 16 | * 4405010599 | FÜR: 05095 50 HZ |
| 16 | * 4405010675 | FÜR: 05095 60 HZ |
| 16 | * 4405010600 | FÜR: 05089 50 HZ |
| 16 | * 4405010676 | FÜR: 05089 60 HZ |
| 16 | * 4405010601 | FÜR: 23043 50 HZ |
| 16 | * 4405010677 | FÜR: 23043 60 HZ |
| 16 | * 4405010602 | FÜR: 05090 50 HZ |
| 16 | * 4405010678 | FÜR: 05090 60 HZ |
| 17 | * 4405010162 | FÜR: 05085, 05086, 05087, 05088, 05089, 05091, 05092, 05093, 05094, 05095, 23024 |
| 18 | * 4405010103 | FÜR: 05085, 05086, 05087, 05091, 05092, 05093, 23024 |
| 18 | * 4405010104 | FÜR: 05088, 05089, 05090, 05094, 05095, 23043 |
| 23 | * 4405010130 | FÜR: 05085, 05086, 05087, 05091, 05092, 05093, 23024 |
| 23 | * 4405010131 | FÜR: 05088, 05089, 05090, 05094, 05095, 23043 |
| 24 | * 4405010163 | FÜR: 05085, 05086, 05087, 05091, 05092, 05093, 23024 |
| 24 | * 4405010164 | FÜR: 05088, 05089, 05090, 05094, 05095, 23043 |
| 25 | * 4405010158 | FÜR: 05085, 05086, 05087, 05091, 05092, 05093, 23024 |
| 25 | * 4405010159 | FÜR: 05088, 05089, 05090, 05094, 05095 |
| 25 | * 4405010176 | FÜR: 23043 |
| 26 | * 4405010137 | FÜR: 05085, 05091, 23024 |

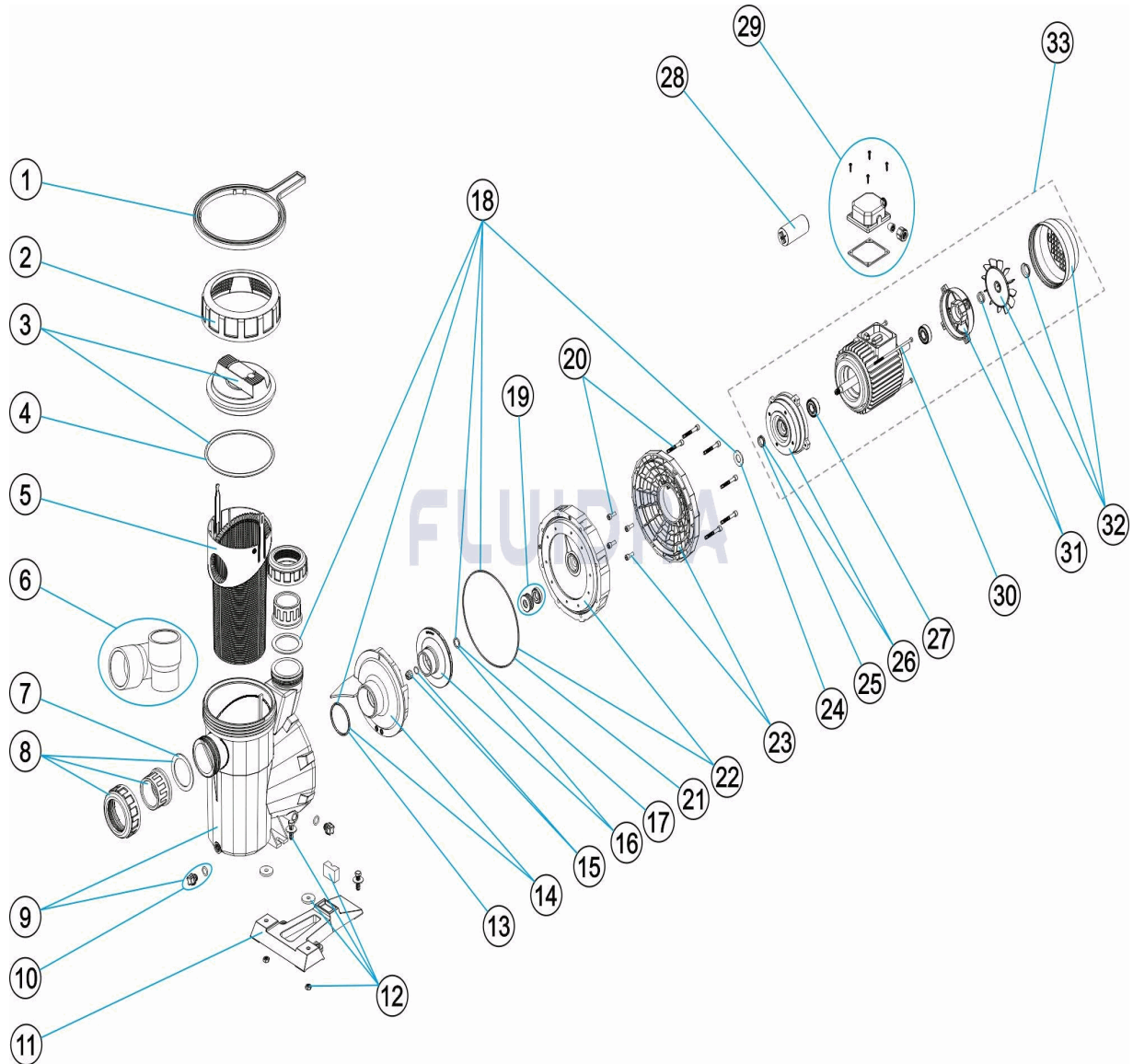
CODE **05085, 05086, 05087, 05088, 05089, 05090, 05091, 05092, 05093, 05094, 05095, 23024, 23043**

BESCHREIBUNG: **PUMPE SELBSTANSAUGEND SPRINT**

| | | |
|----|--------------|--|
| 26 | * 4405010138 | FÜR: 05086, 05087, 05092, 05093 |
| 26 | * 4405010139 | FÜR: 05088, 05089, 05090, 05094, 05095 |
| 26 | * 4405010167 | FÜR: 23043 |
| 27 | * 4405010135 | FÜR: 05085, 05086, 05087, 05091, 05092, 05093, 23024 |
| 27 | * 4405010136 | FÜR: 05088, 05089, 05090, 05094, 05095 |
| 27 | * 4405010171 | FÜR: 23043 |
| 28 | * 4405010149 | FÜR: 05091 |
| 28 | * 4405020121 | FÜR: 05092 |
| 28 | * 4405020122 | FÜR: 05093 |
| 28 | * 4405010150 | FÜR: 05094 |
| 28 | * 4405010174 | FÜR: 05095 |
| 28 | * 4405010175 | FÜR: 23043 |
| 29 | * 4405010154 | FÜR: 05091, 05092, 05093, 23024 |
| 29 | * 4405010155 | FÜR: 05094, 05095, 23043 |
| 29 | * 4405010156 | FÜR: 05085, 05086, 05087 |
| 29 | * 4405010157 | FÜR: 05088, 05089, 05090 |
| 30 | * 4405010143 | FÜR: 05085, 05091, 23024 |
| 30 | * 4405010144 | FÜR: 05086, 05087, 05092, 05093 |
| 30 | * 4405010145 | FÜR: 05088, 05089, 05090, 05094, 05095 |
| 30 | * 4405010169 | FÜR: 23043 |
| 31 | * 4405010140 | FÜR: 05085, 05091, 23024 |
| 31 | * 4405010141 | FÜR: 05086, 05087, 05092, 05093 |
| 31 | * 4405010142 | FÜR: 05088, 05089, 05090, 05094, 05095 |
| 31 | * 4405010168 | FÜR: 23043 |
| 32 | * 4405010146 | FÜR: 05085, 05091, 23024 |
| 32 | * 4405010147 | FÜR: 05086, 05087, 05092, 05093 |
| 32 | * 4405010148 | FÜR: 05088, 05089, 05090, 05094, 05095 |
| 32 | * 4405010170 | FÜR: 23043 |
| 33 | * 20597R0475 | FÜR: 05091, 23024 |
| 33 | * 20598R0475 | FÜR: 05085 |
| 33 | * 20599R0475 | FÜR: 05092 |
| 33 | * 20600R0475 | FÜR: 05086 |
| 33 | * 20601R0475 | FÜR: 05093 |
| 33 | * 20602R0475 | FÜR: 05087 |
| 33 | * 20603R0575 | FÜR: 05094 |
| 33 | * 20604R0575 | FÜR: 05088 |
| 33 | * 20605R0475 | FÜR: 05095 |
| 33 | * 20606R0475 | FÜR: 05089 |
| 33 | * 22341R0475 | FÜR: 23043 |
| 33 | * 20607R0475 | FÜR: 05090 |

CODIGO 05085, 05086, 05087, 05088, 05089, 05090, 05091, 05092, 05093, 05094, 05095, 23024, 23043

DESCRIÇÃO: BOMBA AUTO-ASPIRANTE SPRINT



PORTUGUES

| POS | CODIGO | DESCRIÇÃO | JANTIDADE | POS | CODIGO | DESCRIÇÃO | JANTIDADE |
|-----|--------------|-------------------------------------|-----------|-----|--------------|--------------------------|-----------|
| 1 | 4404130103 | CHAVE PORCA FILTRO | | 14 | * 4405010116 | DIFUSOR 1 HP - 2 HP | |
| 2 | 4404130101 | PORCA TAMPA PRÉ-FILTRO | | 14 | * 4405010117 | DIFUSOR 2,5 - 3 HP | |
| 3 | 4405010702 | TAMPA PRÉ-FILTRO | | 15 | 4405010134 | TAMPO RODÍZIO M8 ESQ. | |
| 4 | 4405010178 | JUNTA TÓRICA D 151,7X6,99 | | 16 | * 4405010723 | RODÍZIO 1/3 HP 50 HZ | |
| 5 | 4405010105 | CESTO PRÉ-FILTRO | | 16 | * 4405010716 | RODÍZIO 1/3 HP 60 HZ | |
| 6 | * 4405010717 | ACESSÓRIOS DE UNIÃO 3 HP | | 16 | * 4405010591 | RODÍZIO ½ (II) HP | |
| 7 | 4405010179 | JUNTA PLANA 72X55X2,5 | | 16 | * 4405010667 | RODÍZIO ½ (II) HP | |
| 8 | * 4405010106 | ACESSÓRIOS DE UNIÃO <= 1 HP | | 16 | * 4405010592 | RODÍZIO ½ (III) HP | |
| 8 | * 4405010107 | ACESSÓRIOS DE UNIÃO 1,5 HP - 2,5 HP | | 16 | * 4405010668 | RODÍZIO ½ (III) HP 60 HZ | |
| 9 | 4405010109 | CORPO BOMBA | | 16 | * 4405010593 | RODÍZIO ¾ (II) HP | |
| 10 | 4405010110 | TAMPÃO PURGA " | | 16 | * 4405010669 | RODÍZIO ¾ (II) HP 60 HZ | |
| 11 | 4405010207 | PÉ BOMBA | | 16 | * 4405010594 | RODÍZIO ¾ (III) HP | |

*** VEJA A FICHA DE OBSERVAÇÕES**

CODIGO 05085, 05086, 05087, 05088, 05089, 05090, 05091, 05092, 05093, 05094, 05095, 23024, 23043

DESCRIÇÃO: BOMBA AUTO-ASPIRANTE SPRINT

| | | | | | |
|----|--------------|--|----|--------------|--|
| 12 | 4405010206 | UNIÃO HIDRÁULICA PIE | 16 | * 4405010670 | RODÍZIO ¼ (III) HP 60 HZ |
| 13 | 4405010161 | JUNTA TÓRICA D 56,7X3,5 | 16 | * 4405010595 | RODÍZIO 1 (II) HP |
| 14 | * 4405010115 | DIFUSOR <=0,75 HP | 16 | * 4405010671 | RODÍZIO 1 (II) HP 60 HZ |
| 16 | * 4405010596 | RODÍZIO 1 (III) HP | 28 | * 4405010149 | CONDENSADOR 12 UF 1/2 CV |
| 16 | * 4405010672 | RODÍZIO 1 (III) HP 60 HZ | 28 | * 4405020121 | CONDENSADOR 14 UF 3/4 CV |
| 16 | * 4405010597 | RODÍZIO 1,5 (II) HP | 28 | * 4405020122 | CONDENSADOR 16 UF 1 CV |
| 16 | * 4405010673 | RODÍZIO 1,5 (II) HP 60 HZ | 28 | * 4405010150 | CONDENSADOR 18 UF 1,5 CV |
| 16 | * 4405010598 | RODÍZIO 1,5 (III) HP | 28 | * 4405010174 | CONDENSADOR 32 ?F 2 CV |
| 16 | * 4405010674 | RODÍZIO 1,5 (III) HP 60 HZ | 28 | * 4405010175 | CONDENSATEUR 40 ?F 2,5-3 CV |
| 16 | * 4405010599 | RODÍZIO 2 (II) CV | 29 | * 4405010154 | CONJUNTO CAIXA LIGAÇÕES C. 63-71 II |
| 16 | * 4405010675 | RODÍZIO 2 (II) CV 60 HZ | 29 | * 4405010155 | CONJUNTO CAIXA LIGAÇÕES 2-2,5-3 HP (A |
| 16 | * 4405010600 | RODÍZIO 2 (III) HP | 29 | * 4405010156 | TAMPA CAIXA BORNES C 63-71 III |
| 16 | * 4405010676 | RODÍZIO 2 (III) HP 60 HZ | 29 | * 4405010157 | CONJUNTO CAIXA LIGAÇÕES C.80-90 III |
| 16 | * 4405010601 | RODÍZIO 3 (II) HP | 30 | * 4405010143 | VARETAS MOTOR C. 63 |
| 16 | * 4405010677 | RODÍZIO 3 (II) HP 60 HZ | 30 | * 4405010144 | VARETAS MOTOR 0,75 - 1 HP |
| 16 | * 4405010602 | RODÍZIO 3 (III) HP | 30 | * 4405010145 | VARETAS MOTOR 1,5 - 3 HP III |
| 16 | * 4405010678 | RODÍZIO 3 (III) HP 60 HZ | 30 | * 4405010169 | VARETAS MOTOR (90) 3 HP II |
| 17 | * 4405010162 | ANILHA DEFLECTORA (1/2-3/4-1-1,5-2 HP) | 31 | * 4405010140 | TAMPA TRASEIRA MOTOR 1/3 A 1/2 HP |
| 18 | * 4405010103 | JUNTAS 0,5 HP - 2 HP | 31 | * 4405010141 | TAMPA TRASEIRA MOTOR 3/4 A 1 HP |
| 18 | * 4405010104 | JUNTAS 3 HP | 31 | * 4405010142 | TAMPA TRASEIRA MOTOR 1,5 - 3 HP III |
| 19 | 4405010118 | JUNTA MECÂNICA | 31 | * 4405010168 | TAMPA TRASEIRA MOTOR 2,5 - 3 HP II |
| 20 | 4405010133 | PARAFUSOS DA FLANGE DO SELO | 32 | * 4405010146 | CONJUNTO VENTILLADOR-TAMPA 0,5 HP |
| 21 | 4405010160 | JUNTA MANILHA MOTOR | 32 | * 4405010147 | CONJUNTO VENTILLADOR-TAMPA 0,75 - 1 HP |
| 22 | 4405010132 | FLANGE DO SELO MECÂNICO | 32 | * 4405010148 | CONJUNTO VENTILLADOR-TAMPA 1,5 - 2 - 3 |
| 23 | * 4405010130 | MANILHA MOTOR <= 1 HP | 32 | * 4405010170 | CONJUNTO VENTILLADOR-TAMPA 3 HP II |
| 23 | * 4405010131 | MANILHA MOTOR 1,5 HP - 3HP | 33 | * 20597R0475 | MOTOR 1/2 HP II |
| 24 | * 4405010163 | ANILHA DEFLECTORA C.71 1/2-1 HP | 33 | * 20598R0475 | MOTOR 1/2 HP III |
| 24 | * 4405010164 | ANILHA DEFLECTORA C.80 1,5-3 HP | 33 | * 20599R0475 | MOTOR 3/4 HP II |
| 25 | * 4405010158 | V-RINGS 0,5 HP - 1 HP | 33 | * 20600R0475 | MOTOR 3/4 HP III |
| 25 | * 4405010159 | V-RINGS 1,5 HP - 3 HP | 33 | * 20601R0475 | MOTOR 1 HP II |
| 25 | * 4405010176 | V-RINGS VA-2,5 - 3 HP II | 33 | * 20602R0475 | MOTOR 1 HP III |
| 26 | * 4405010137 | TAMPA DIANTEIRA MOTOR 0,5 HP | 33 | * 20603R0575 | MOTOR 1,5 HP II |
| 26 | * 4405010138 | TAMPA DIANTEIRA MOTOR 0,75 - 1 HP | 33 | * 20604R0575 | MOTOR 1,5 HP III |
| 26 | * 4405010139 | TAMPA DIANTEIRA MOTOR 1,5 - 3 HP III | 33 | * 20605R0475 | MOTOR 2 HP II |
| 26 | * 4405010167 | TAMPA DIANTEIRA MOTOR 2,5 3 HP II | 33 | * 20606R0475 | MOTOR 2 HP III |
| 27 | * 4405010135 | ROLAMENTO MOTOR < 1 HP | 33 | * 22341R0475 | MOTOR 3 HP II |
| 27 | * 4405010136 | ROLAMENTO MOTOR 1,5 HP - 3 HP | 33 | * 20607R0475 | MOTOR 3 HP III |
| 27 | * 4405010171 | CONJUNTO ROLAMENTO 6205 2RS 3,5HP | | | |

CODIGO 05085, 05086, 05087, 05088, 05089, 05090, 05091, 05092, 05093, 05094, 05095, 23024, 23043

DESCRIÇÃO: BOMBA AUTO-ASPIRANTE SPRINT

OBSERVAÇÕES

| POS | CODIGO | OBSERVAÇÕES |
|-----|--------------|---|
| 6 | * 4405010717 | PARA: 05090, 23043 |
| 8 | * 4405010106 | PARA: 05085, 05086, 05087, 05091, 05092, 05093, 23024 |
| 8 | * 4405010107 | PARA: 05088, 05089, 05090, 05094, 05095, 23043 |
| 14 | * 4405010115 | PARA: 05085, 05086, 05091, 05092, 23024 |
| 14 | * 4405010116 | PARA: 05087, 05088, 05089, 05093, 05094, 05095 |
| 14 | * 4405010117 | PARA: 05090, 23043 |
| 16 | * 4405010723 | PARA: 23024 50 HZ |
| 16 | * 4405010716 | PARA: 23024 60 HZ |
| 16 | * 4405010591 | PARA: 05091 50 HZ |
| 16 | * 4405010667 | PARA: 05091 60 HZ |
| 16 | * 4405010592 | PARA: 05085 50 HZ |
| 16 | * 4405010668 | PARA: 05085 60 HZ |
| 16 | * 4405010593 | PARA: 05092 50 HZ |
| 16 | * 4405010669 | PARA: 05092 60 HZ |
| 16 | * 4405010594 | PARA: 05086 50 HZ |
| 16 | * 4405010670 | PARA: 05086 60 HZ |
| 16 | * 4405010595 | PARA: 05093 50 HZ |
| 16 | * 4405010671 | PARA: 05093 60 HZ |
| 16 | * 4405010596 | PARA: 05087 50 HZ |
| 16 | * 4405010672 | PARA: 05087 60 HZ |
| 16 | * 4405010597 | PARA: 05094 50 HZ |
| 16 | * 4405010673 | PARA: 05094 60 HZ |
| 16 | * 4405010598 | PARA: 05088 50 HZ |
| 16 | * 4405010674 | PARA: 05088 60 HZ |
| 16 | * 4405010599 | PARA: 05095 50 HZ |
| 16 | * 4405010675 | PARA: 05095 60 HZ |
| 16 | * 4405010600 | PARA: 05089 50 HZ |
| 16 | * 4405010676 | PARA: 05089 60 HZ |
| 16 | * 4405010601 | PARA: 23043 50 HZ |
| 16 | * 4405010677 | PARA: 23043 60 HZ |
| 16 | * 4405010602 | PARA: 05090 50 HZ |
| 16 | * 4405010678 | PARA: 05090 60 HZ |
| 17 | * 4405010162 | PARA: 05085, 05086, 05087, 05088, 05089, 05091, 05092, 05093, 05094, 05095, 23024 |
| 18 | * 4405010103 | PARA: 05085, 05086, 05087, 05091, 05092, 05093, 23024 |
| 18 | * 4405010104 | PARA: 05088, 05089, 05090, 05094, 05095, 23043 |
| 23 | * 4405010130 | PARA: 05085, 05086, 05087, 05091, 05092, 05093, 23024 |
| 23 | * 4405010131 | PARA: 05088, 05089, 05090, 05094, 05095, 23043 |
| 24 | * 4405010163 | PARA: 05085, 05086, 05087, 05091, 05092, 05093, 23024 |
| 24 | * 4405010164 | PARA: 05088, 05089, 05090, 05094, 05095, 23043 |
| 25 | * 4405010158 | PARA: 05085, 05086, 05087, 05091, 05092, 05093, 23024 |
| 25 | * 4405010159 | PARA: 05088, 05089, 05090, 05094, 05095 |
| 25 | * 4405010176 | PARA: 23043 |
| 26 | * 4405010137 | PARA: 05085, 05091, 23024 |

CODIGO **05085, 05086, 05087, 05088, 05089, 05090, 05091, 05092, 05093, 05094, 05095, 23024, 23043**

DESCRIÇÃO: BOMBA AUTO-ASPIRANTE SPRINT

| | | |
|----|--------------|---|
| 26 | * 4405010138 | PARA: 05086, 05087, 05092, 05093 |
| 26 | * 4405010139 | PARA: 05088, 05089, 05090, 05094, 05095 |
| 26 | * 4405010167 | PARA: 23043 |
| 27 | * 4405010135 | PARA: 05085, 05086, 05087, 05091, 05092, 05093, 23024 |
| 27 | * 4405010136 | PARA: 05088, 05089, 05090, 05094, 05095 |
| 27 | * 4405010171 | PARA: 23043 |
| 28 | * 4405010149 | PARA: 05091 |
| 28 | * 4405020121 | PARA: 05092 |
| 28 | * 4405020122 | PARA: 05093 |
| 28 | * 4405010150 | PARA: 05094 |
| 28 | * 4405010174 | PARA: 05095 |
| 28 | * 4405010175 | PARA: 23043 |
| 29 | * 4405010154 | PARA: 05091, 05092, 05093, 23024 |
| 29 | * 4405010155 | PARA: 05094, 05095, 23043 |
| 29 | * 4405010156 | PARA: 05085, 05086, 05087 |
| 29 | * 4405010157 | PARA: 05088, 05089, 05090 |
| 30 | * 4405010143 | PARA: 05085, 05091, 23024 |
| 30 | * 4405010144 | PARA: 05086, 05087, 05092, 05093 |
| 30 | * 4405010145 | PARA: 05088, 05089, 05090, 05094, 05095 |
| 30 | * 4405010169 | PARA: 23043 |
| 31 | * 4405010140 | PARA: 05085, 05091, 23024 |
| 31 | * 4405010141 | PARA: 05086, 05087, 05092, 05093 |
| 31 | * 4405010142 | PARA: 05088, 05089, 05090, 05094, 05095 |
| 31 | * 4405010168 | PARA: 23043 |
| 32 | * 4405010146 | PARA: 05085, 05091, 23024 |
| 32 | * 4405010147 | PARA: 05086, 05087, 05092, 05093 |
| 32 | * 4405010148 | PARA: 05088, 05089, 05090, 05094, 05095 |
| 32 | * 4405010170 | PARA: 23043 |
| 33 | * 20597R0475 | PARA: 05091, 23024 |
| 33 | * 20598R0475 | PARA: 05085 |
| 33 | * 20599R0475 | PARA: 05092 |
| 33 | * 20600R0475 | PARA: 05086 |
| 33 | * 20601R0475 | PARA: 05093 |
| 33 | * 20602R0475 | PARA: 05087 |
| 33 | * 20603R0575 | PARA: 05094 |
| 33 | * 20604R0575 | PARA: 05088 |
| 33 | * 20605R0475 | PARA: 05095 |
| 33 | * 20606R0475 | PARA: 05089 |
| 33 | * 22341R0475 | PARA: 23043 |
| 33 | * 20607R0475 | PARA: 05090 |