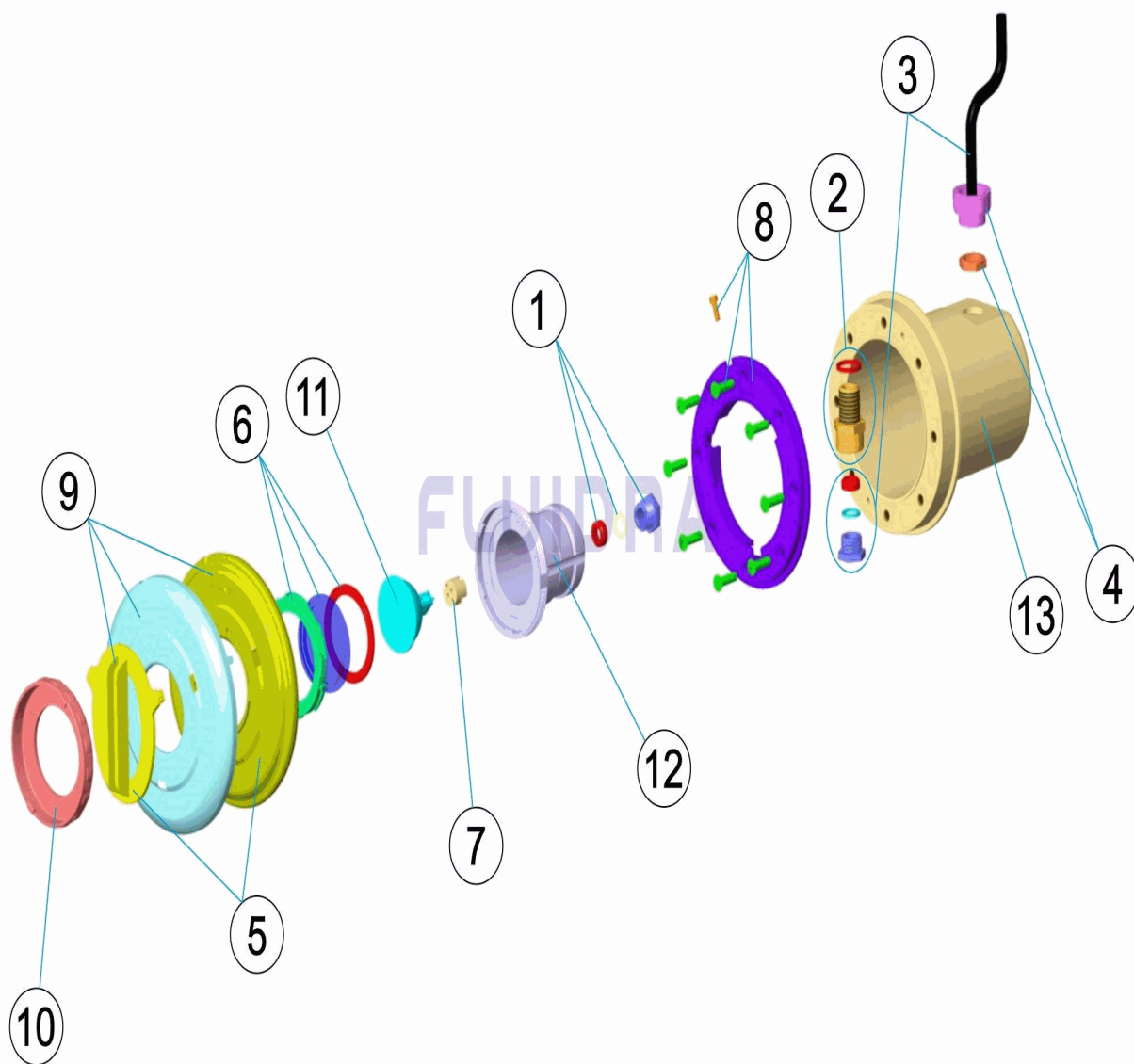


CODIGO **33710, 36648**

DESCRIPCION: **PROYECTOR MINI/PLASTICO/NICHO PISC. HORMIGON**



**ESPAÑOL**

POS	CODIGO	DESCRIPCION	CANTIDAD	POS	CODIGO	DESCRIPCION	CANTIDAD
1	4403010107	PRENSAESTOPAS PANTALLA		8	4403011602	BRIDA PROYECTOR DICROICO	
2	4403014102	CUERPO PASACABLES PROYECTOR MINI		9	* 4403013702	EMBELECEDOR PROYECTOR MINI	
3	4403014103	CABLE PROYECTOR MINI 2X1,5X250		10	4403012101	EMBELECEDOR DICROICO	
4	4403014104	ADAPTADOR PG-11 A M-25		11	4403010074	LAMPARA HALOGENA ALUMINIZADA	
5	* 4403011601	TAPA PROYECTOR DICROICO LEDS		12	33708R0001	CUERPO PROYECTOR	
6	4403012003	LENTE COMPLETA		13	4403015901	NICHO PROYECTOR MINI LEDS	
7	4403011407	PORTALAMPARAS					

**CODIGO 33710, 36648**

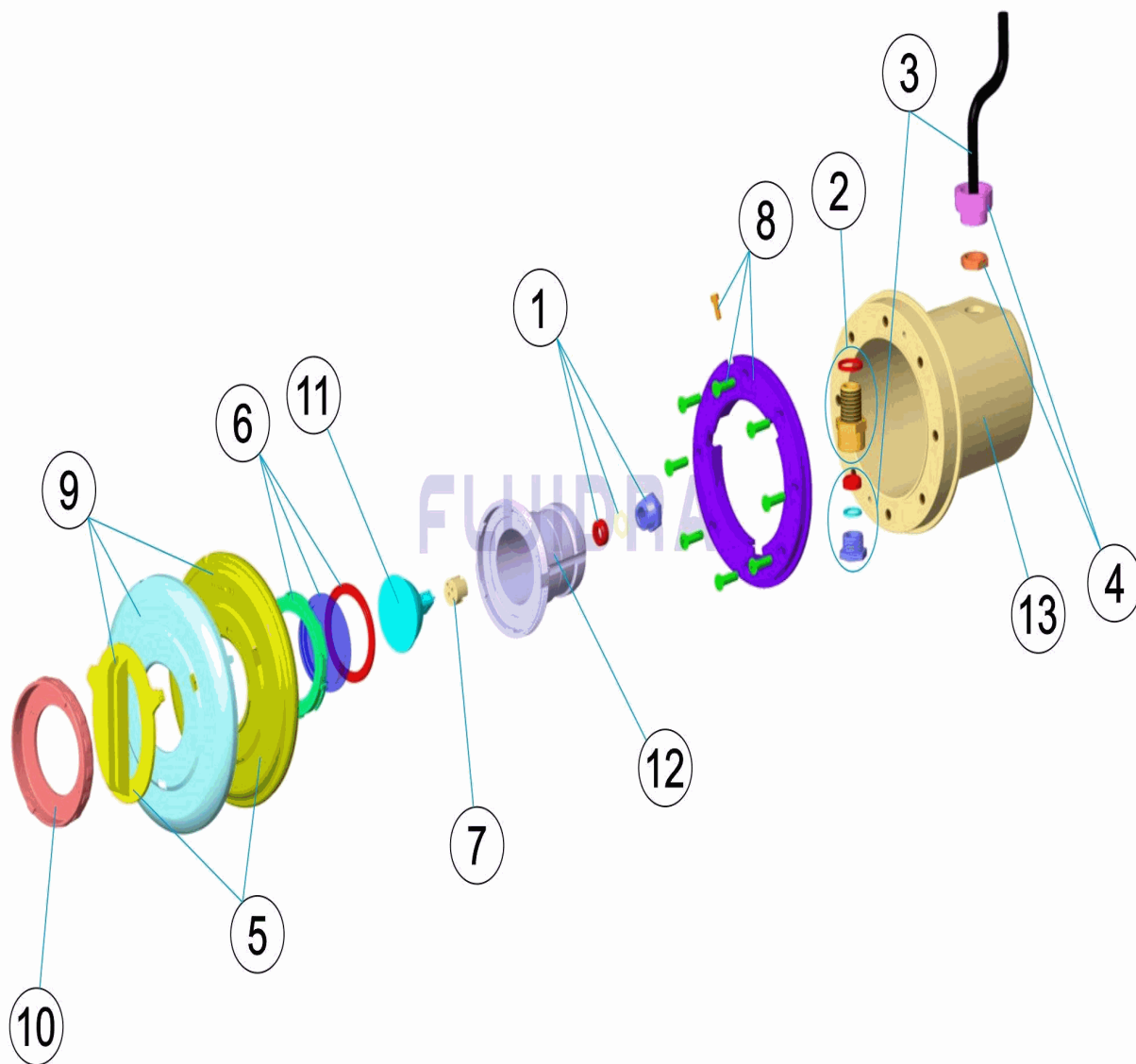
**DESCRIPCION: PROYECTOR MINI/PLASTICO/NICHO PISC. HORMIGON**

**OBSERVACIONES**

POS	CODIGO	OBSERVACIONES
5	* 4403011601	PARA: 33710
9	* 4403013702	PARA: 36648

CODE 33710, 36648

DESCRIPTION: PROJECTEUR MINI/PLASTIQUE/NICHE PISC. BÉTON



FRANCAIS

POS	CODE	DESCRIPTION	QUANTITE	POS	CODE	DESCRIPTION	QUANTITE
1	4403010107	PRESSE-ETOUPE		8	4403011602	BRIDE PROJECTEUR DICHROIQUE	
2	4403014102	CORPS DE PASSE CABLE PROJECTEUR M		9	* 4403013702	ENJOLIVEUR DE PROJECTEUR MINI	
3	4403014103	CABLE PROJECTEUR MINI 2X1,5X250		10	4403012101	ENJOLIVEUR ET OPTIQUE	
4	4403014104	ADAPTATEUR PG-11 A M-25		11	4403010074	LAMPE HALOGÈNE ALUMINISÉ	
5	* 4403011601	CACHE VIS PROJECTEUR DICHROIQUE		12	33708R0001	CORPS DU PROJECTEUR	
6	4403012003	LENTILLE COMPLETE		13	4403015901	NICHE PROJECTEUR MINI À LEDS	
7	4403011407	PORTE-LAMPE					

CODE **33710, 36648**

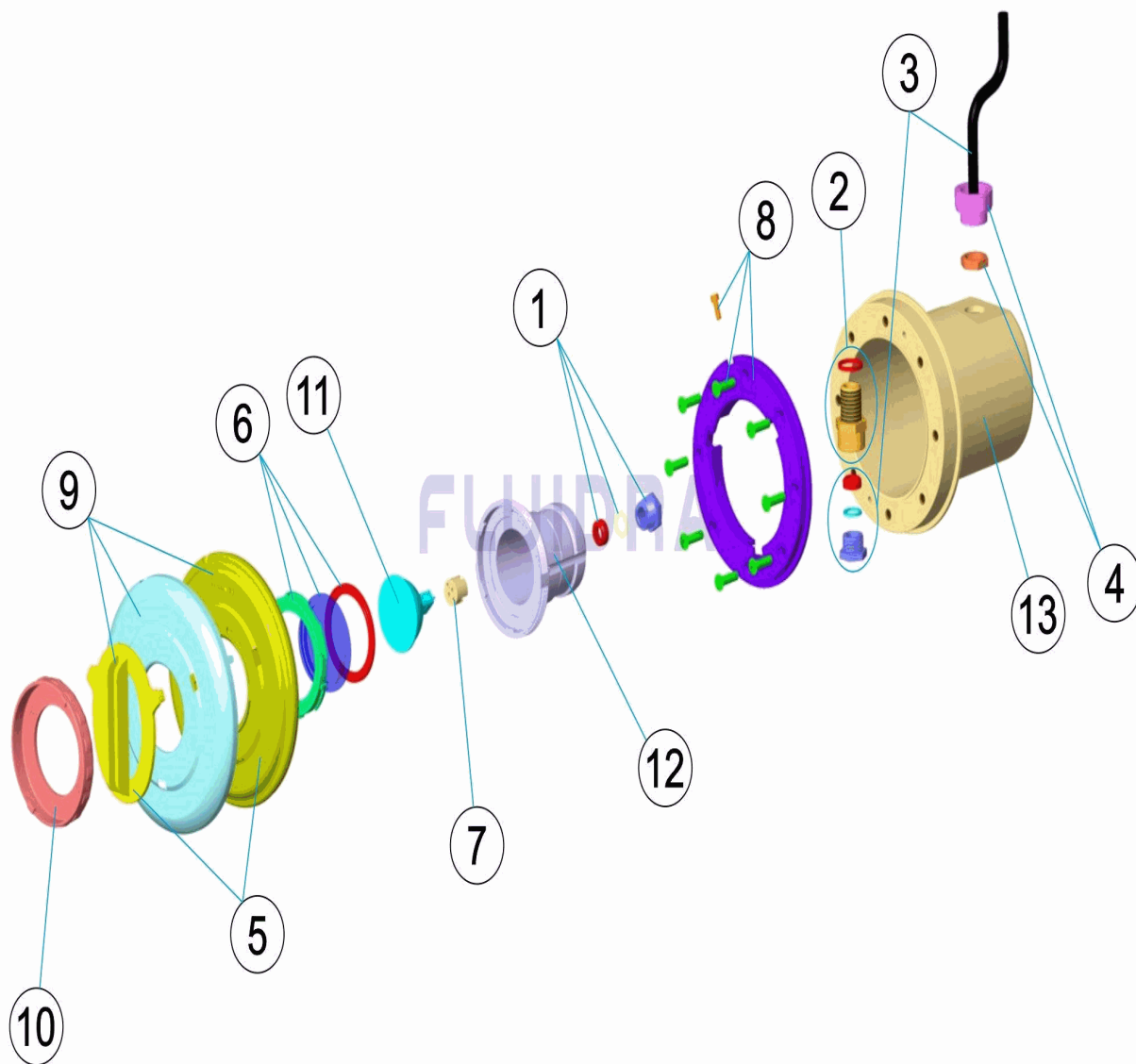
DESCRIPTION: **PROJECTEUR MINI/PLASTIQUE/NICHE PISC. BÉTON**

**OBSERVATIONS**

POS	CODE	OBSERVATIONS
5	* 4403011601	POUR: 33710
9	* 4403013702	POUR: 36648

CODE **33710, 36648**

DESCRIPTION: **MINI LIGHT / PLASTIC / NICHE CONCRETE POOL**



**ENGLISH**

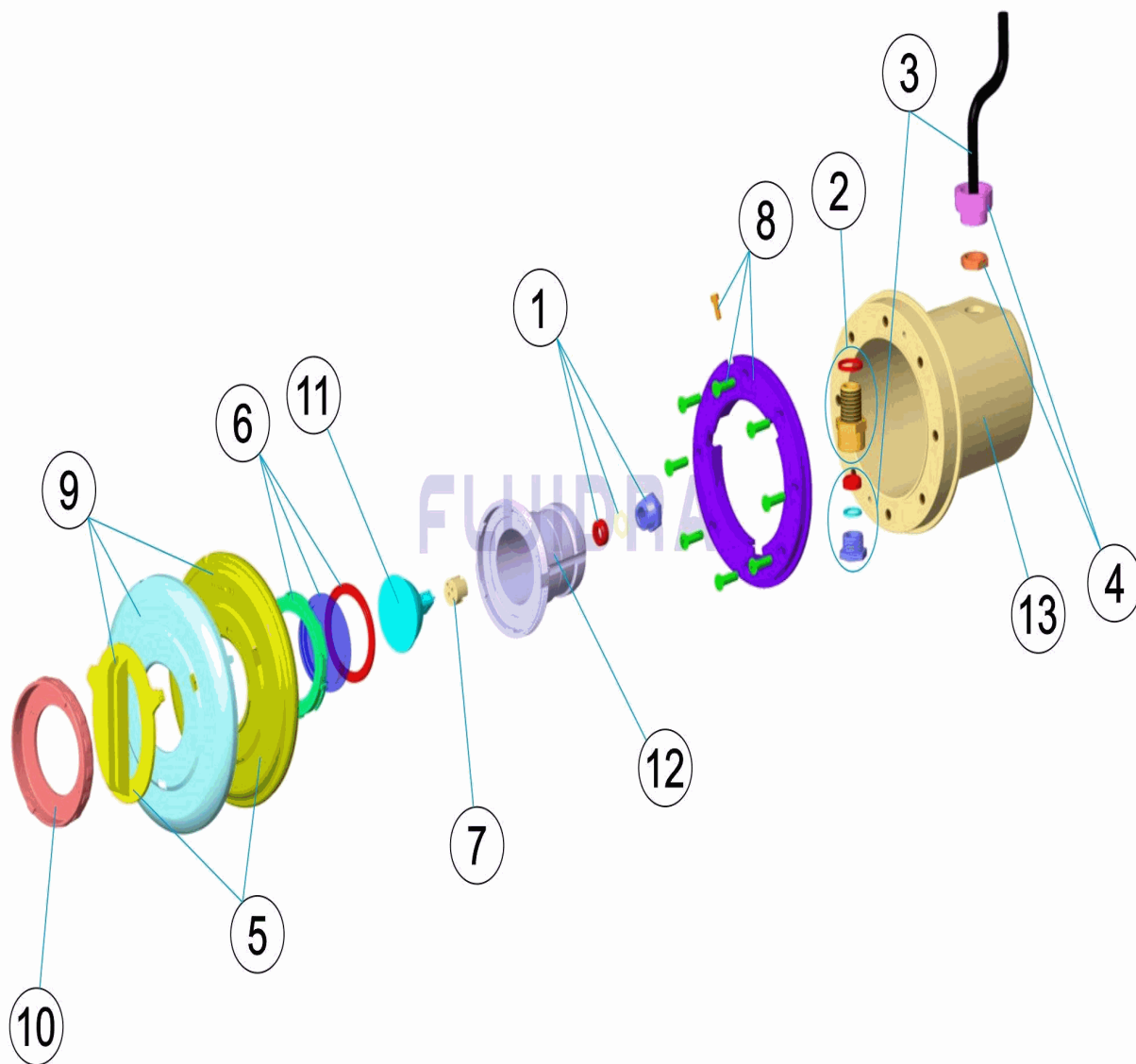
POS	CODE	DESCRIPTION	QUANTITY	POS	CODE	DESCRIPTION	QUANTITY
1	4403010107	LIGHT PACKING GLAND		8	4403011602	DICHRO LIGHT FLANGE	
2	4403014102	BODY CABLE CONDUIT UWL MINI		9	* 4403013702	LIGHT FACEPLATE MINI	
3	4403014103	CABLE UWL MINI 2X1,5X250		10	4403012101	DICHRO FACEPLATE	
4	4403014104	ADAPTOR PG-11 TO M-25		11	4403010074	LAMP HALOGEN ALUMINIZED	
5	* 4403011601	DICHRO FACEPLATE		12	33708R0001	LAMP BODY PLASTIC	
6	4403012003	LENS KIT		13	4403015901	MINI LEDS LIGHT NICHE	
7	4403011407	LAMP HOLDER					

CODE                    **33710, 36648**DESCRIPTION: **MINI LIGHT / PLASTIC / NICHE CONCRETE POOL****OBSERVATIONS**

POS	CODE	OBSERVATIONS
5	* 4403011601	FOR: 33710
9	* 4403013702	FOR: 36648

CODICE **33710, 36648**

DESCRIZIONE: **PROIETTORE MINI/PLASTICO/NICCHIA PISCINA CEMENTO**



**ITALIANO**

POS	CODICE	DESCRIZIONE	QUANTITA'	POS	CODICE	DESCRIZIONE	QUANTITA'
1	4403010107	PRESSACAVI SCHERMO		8	4403011602	FLANGIA FARO DICROICO	
2	4403014102	CORPO PRESSACAVO FARO MINI		9	* 4403013702	ANELLO FRONTALE FARO MINI	
3	4403014103	CAVO 2X1,5X250 FARO MINI		10	4403012101	FLANGIA FARO DICROICO	
4	4403014104	ADATTATORE PG-11 A M-25		11	4403010074	LAMPADA ALOGENA ALLUMINATO	
5	* 4403011601	COPERCHIO FARO DICROICO		12	33708R0001	CORPO PROIETTORE	
6	4403012003	LENTE COMPLETA		13	4403015901	NICCHIA PROIETTORE MINI LEDS	
7	4403011407	PORTALAMPADE					

\* SI FACCIA RIFERIMENTO AL FOGLIO DELLE OSSERVAZIONI

**CODICE 33710, 36648**

**DESCRIZIONE: PROIETTORE MINI/PLASTICO/NICCHIA PISCINA CEMENTO**

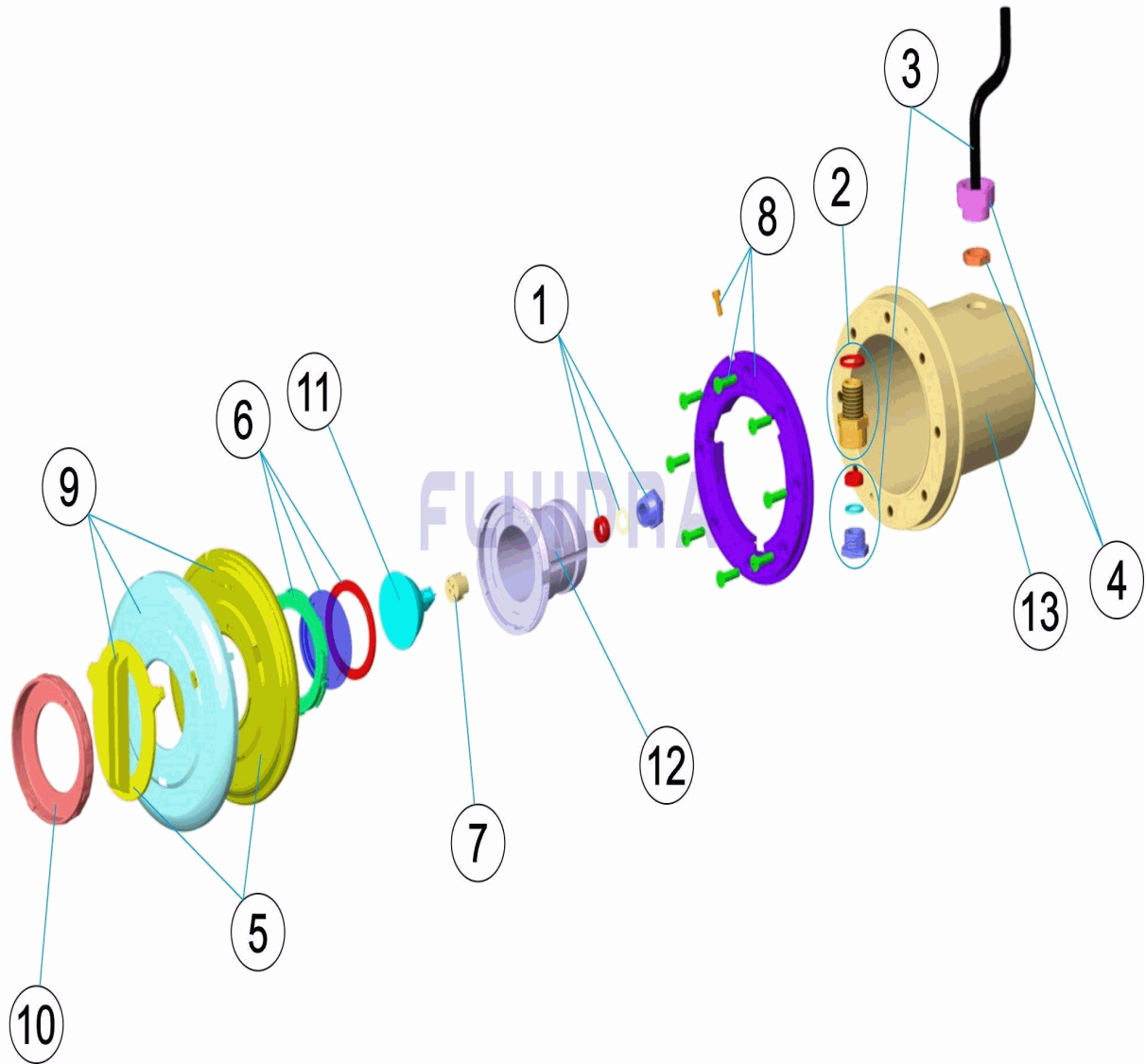
**OSSERVAZIONI**

POS	CODICE	OSSERVAZIONI
5	* 4403011601	PER: 33710
9	* 4403013702	PER: 36648



CODE **33710, 36648**

BESCHREIBUNG: **UWS MINI/KUNSTSTOFF/EINBAUTOPF BETONBECKEN**



**DEUTSCH**

POS	CODE	BESCHREIBUNG	MENGE	POS	CODE	BESCHREIBUNG	MENGE
1	4403010107	QUETSCHVERSCHRAUBUNG		8	4403011602	FLANSCH UWS KALTLICHT	
2	4403014102	GEHÄUSE KABELDURCHFÜHRUNG MINI-U		9	* 4403013702	BLLENDE MINI-UWS	
3	4403014103	MINI UWS-KABEL 2 X 1,5 X 250		10	4403012101	BLLENDE KALTLICHT	
4	4403014104	ADAPTER PG11 ZU M-25		11	4403010074	LAMPE HALOGEN ALUMINIUM	
5	* 4403011601	ABDECKUNG UWS KALTLICHT LED		12	33708R0001	GEHÄUSE UWS	
6	4403012003	LINSE KOMPLETT		13	4403015901	EINBAUTOPF MINI-UWS LED	
7	4403011407	LAMPENFASSUNG					

CODE **33710, 36648**

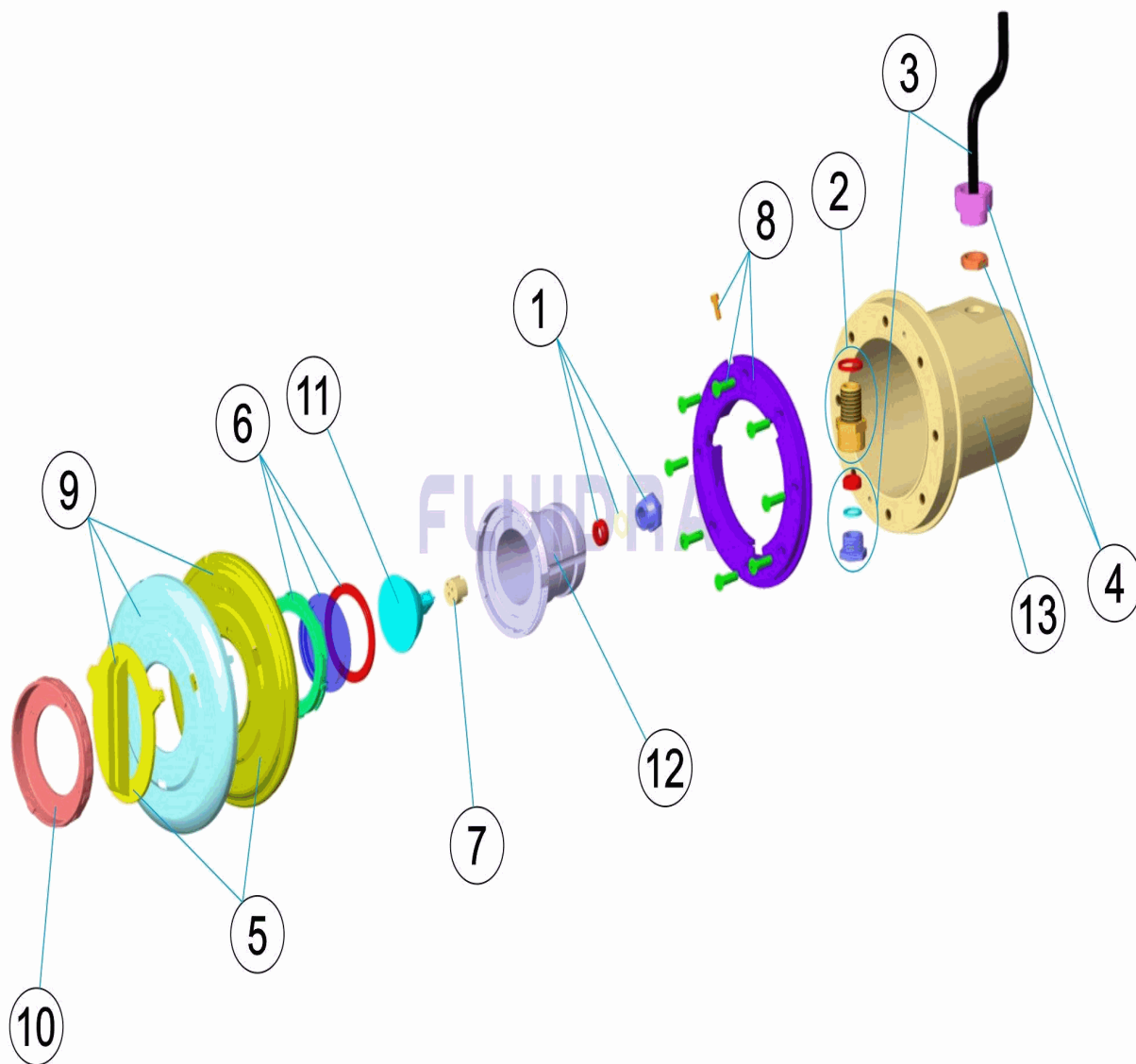
BESCHREIBUNG: **UWS MINI/KUNSTSTOFF/EINBAUTOPF BETONBECKEN**

**HINWEISE**

POS	CODE	HINWEISE
5	* 4403011601	FÜR: 33710
9	* 4403013702	FÜR: 36648

CODIGO **33710, 36648**

DESCRIÇÃO: **PROJECTOR MINI/PLÁSTICO/NICHO PISC. BETÃO**



**PORTUGUES**

POS	CODIGO	DESCRIÇÃO	JANTIDADE	POS	CODIGO	DESCRIÇÃO	JANTIDADE
1	4403010107	BUCIN LENTE		8	4403011602	FLANGE PROTECTOR DICROICO	
2	4403014102	CORPO PASSACABOS PROJ. MINI		9	* 4403013702	EMBELEZADOR PROJECTOR MINI	
3	4403014103	CABO PROJECTOR MINI 2X1,5X250		10	4403012101	EMBELEZADOR DICROICO	
4	4403014104	ADAPTADOR PG-11 A M-25		11	4403010074	LÂMPADA HALÓGENA ALUMINIZADA	
5	* 4403011601	TAMPA PROJECTOR DICROICO		12	33708R0001	CORPO PROJECTOR	
6	4403012003	LENTE COMPLETA		13	4403015901	NICHO PROJECTOR MINI LEDS	
7	4403011407	PORTA-LÂMPADA					

**CODIGO 33710, 36648**

**DESCRIÇÃO: PROJECTOR MINI/PLÁSTICO/NICHO PISC. BETÃO**

**OBSERVAÇÕES**

POS	CODIGO	OBSERVAÇÕES
5	* 4403011601	PARA: 33710
9	* 4403013702	PARA: 36648