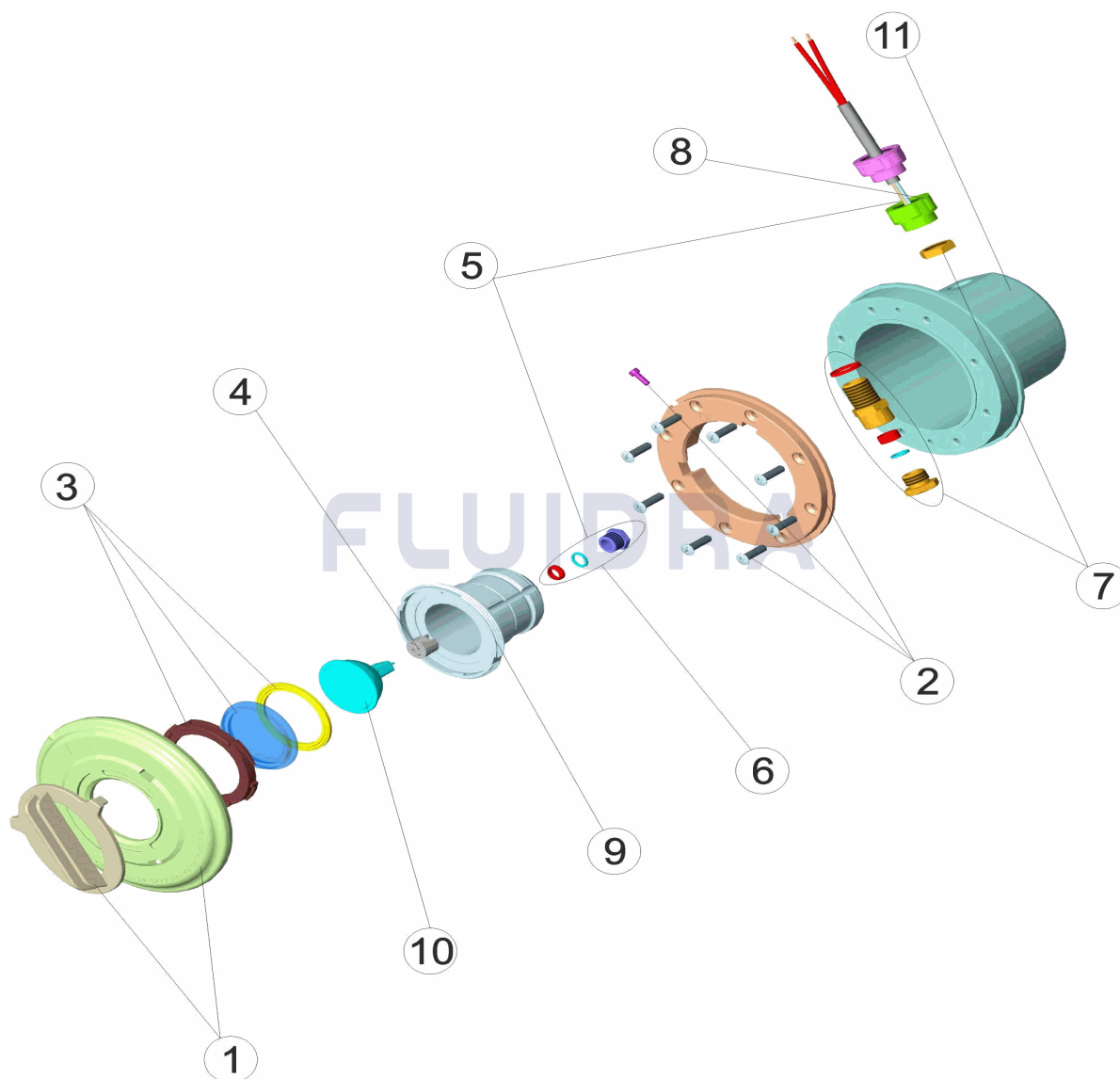


CODIGO **08556**

DESCRIPCION: **PROYECTOR MINI CON NICHOS PISCINA HORMIGON**

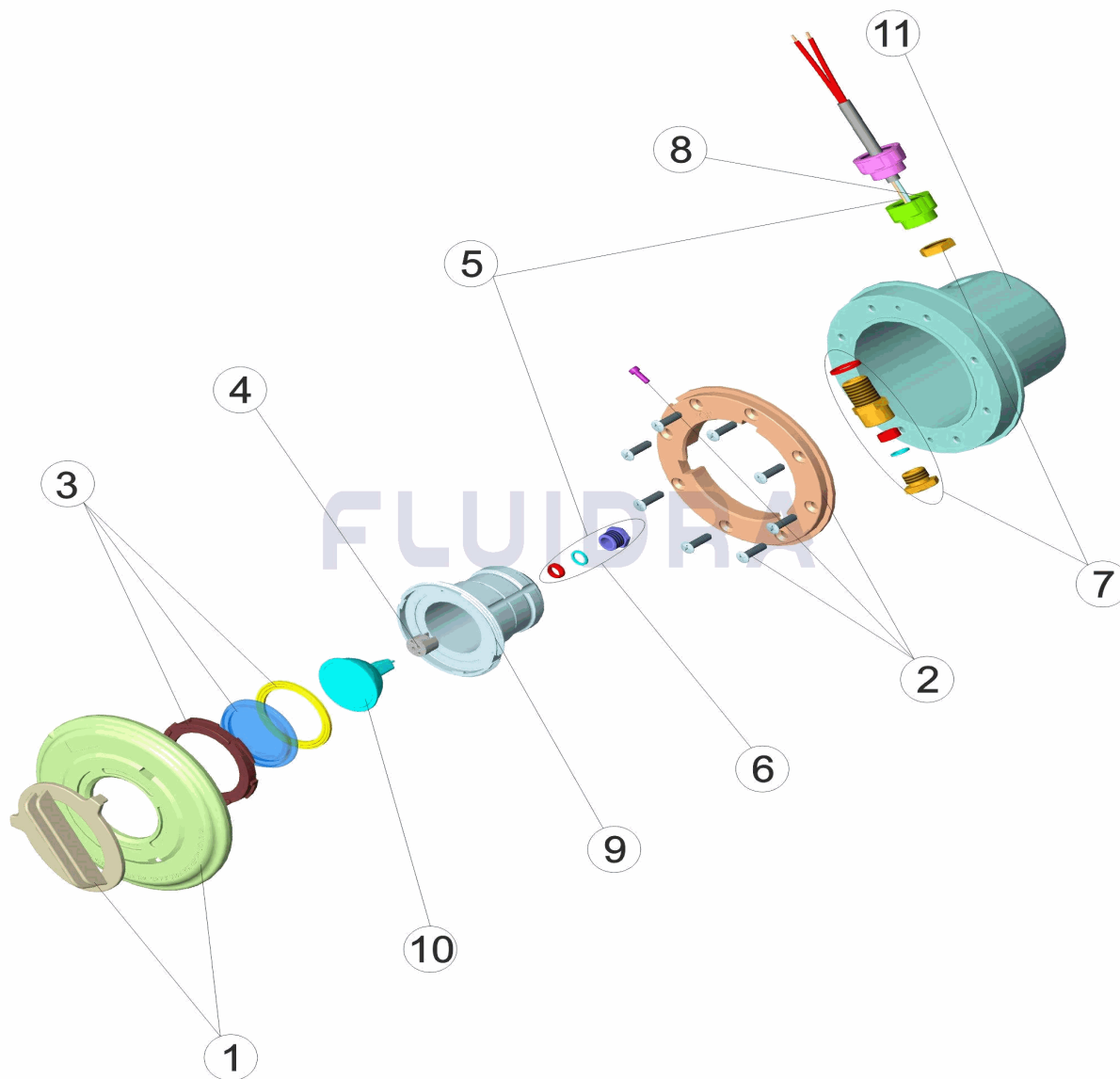


ESPAÑOL

POS	CODIGO	DESCRIPCION	CANTIDAD	POS	CODIGO	DESCRIPCION	CANTIDAD
1	4403011601	TAPA PROYECTOR DICROICO LEDS		7	4403010118	PRENSAESTOPAS PROYECTOR	
2	4403011602	BRIDA PROYECTOR DICROICO		8	4403011608	PASACABLES	
3	4403012003	LENTE COMPLETA		9	4403011610	CUERPO PROYECTOR BAYONETA	
4	4403011407	PORTALAMPARAS		10	4403010074	LAMPARA HALOGENA ALUMINIZADA	
5	4403011404	CABLE PROYECTOR		11	04582R0001	NICHOS PROYECTOR DICROICO P.P.	
6	4403011405	PRENSAESTOPAS PROYECTOR DICROICC					

CODE 08556

DESCRIPTION: PROJECTEUR MINI AVEC NICHE PISCINE BÉTON

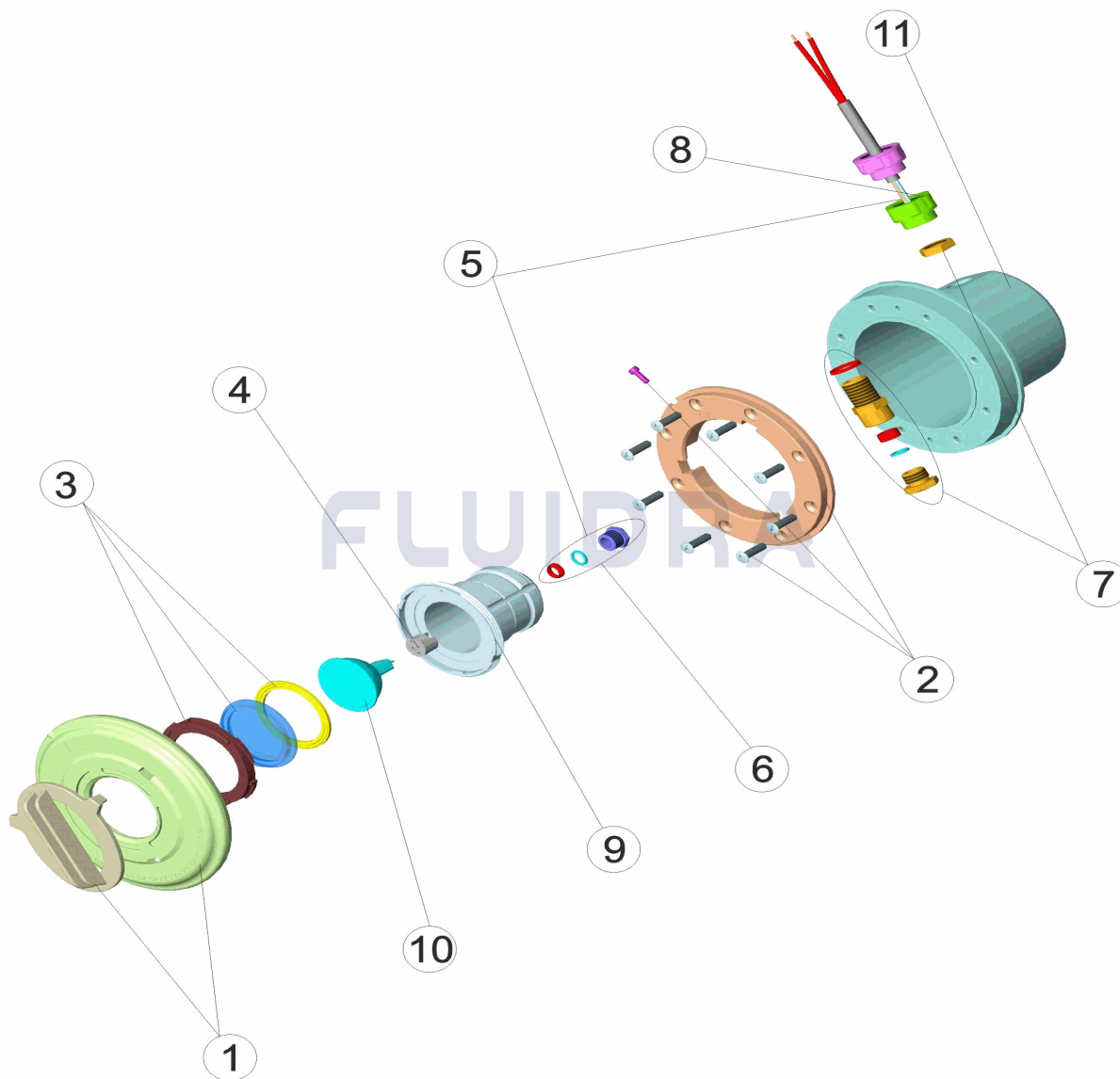


FRANCAIS

POS	CODE	DESCRIPTION	QUANTITE	POS	CODE	DESCRIPTION	QUANTITE
1	4403011601	CACHE VIS PROJECTEUR DICHROIQUE		7	4403010118	PRESSE-ETOUPE PROJECTEUR	
2	4403011602	BRIDE PROJECTEUR DICHROIQUE		8	4403011608	PASSE CABLE	
3	4403012003	LENTILLE COMPLETE		9	4403011610	CORPS DU PROJECTEUR	
4	4403011407	PORTE-LAMPE		10	4403010074	LAMPE HALOGENE ALUMINISE	
5	4403011404	CABLE PROJECTEUR		11	04582R0001	NICHE PROJECTEUR MINI	
6	4403011405	PRESSE-ÉTOUPE ET JOINT PROJ. DICHRC					

CODE **08556**

DESCRIPTION: **MINI LIGHT WITH NICHE CONCRETE POOL**

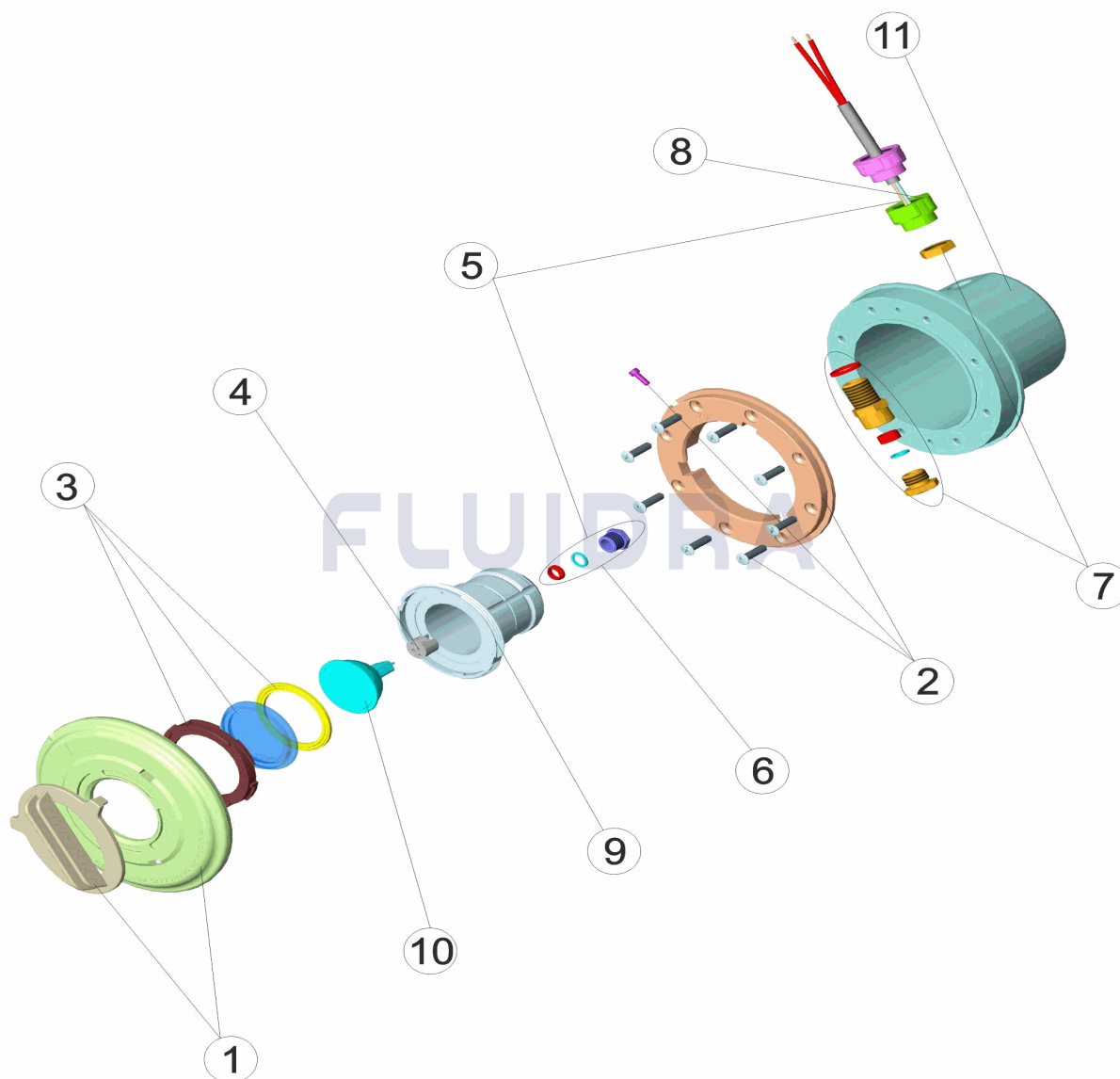


ENGLISH

POS	CODE	DESCRIPTION	QUANTITY	POS	CODE	DESCRIPTION	QUANTITY
1	4403011601	DICHRO FACEPLATE		7	4403010118	LIGHT PACKING GLAND	
2	4403011602	DICHRO LIGHT FLANGE		8	4403011608	CONDUIT CONNECTOR	
3	4403012003	LENS KIT		9	4403011610	LIGHT BODY	
4	4403011407	LAMP HOLDER		10	4403010074	LAMP HALOGEN ALUMINIZED	
5	4403011404	LIGHT CABLE		11	04582R0001	DICHROIC FLOODLAMP HOUSING	
6	4403011405	PACKING GLAND					

CODICE **08556**

DESCRIZIONE: **PROIETTORE MINI CON NICCHIA PISCINA CEMENTO**

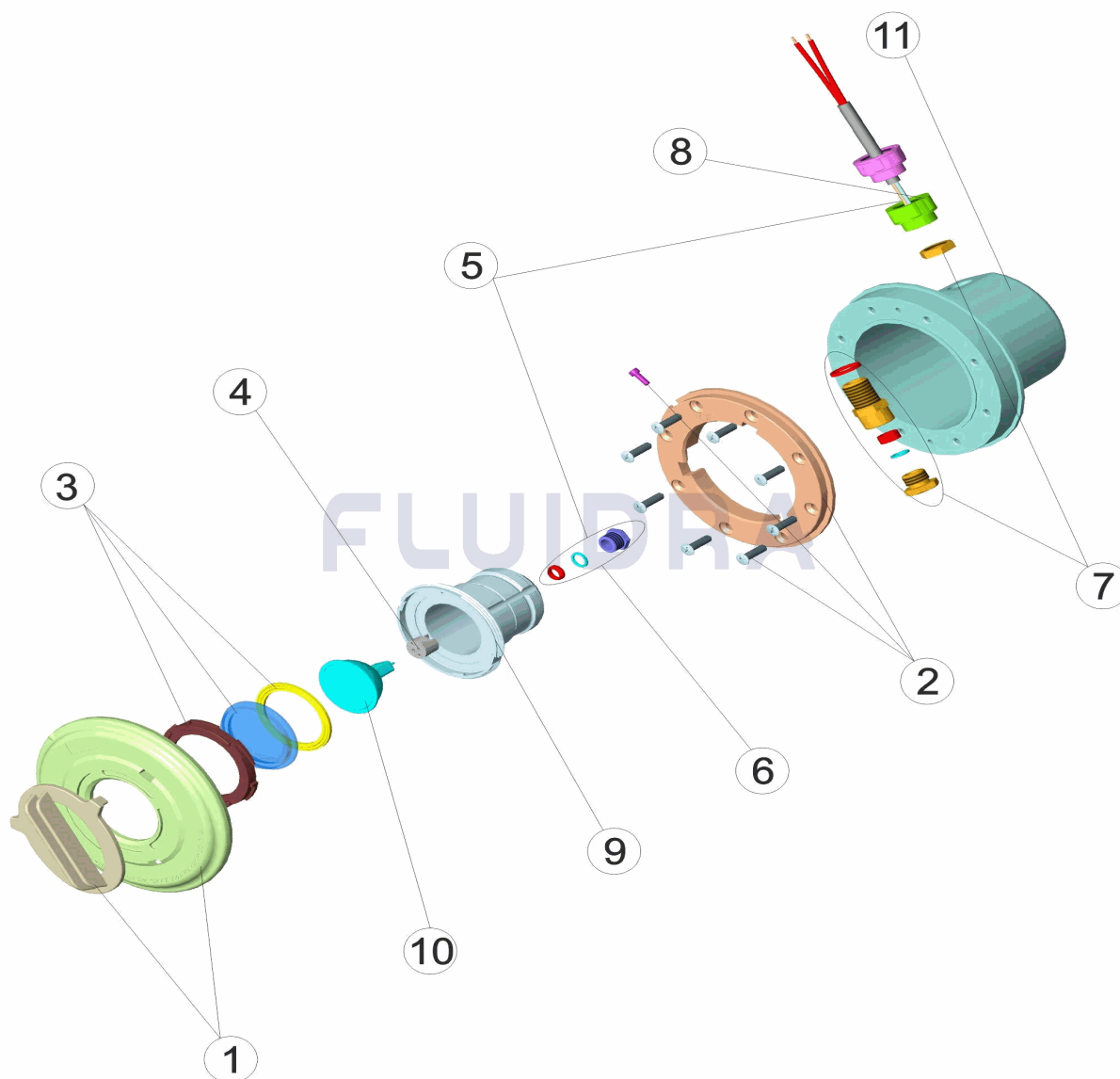


ITALIANO

POS	CODICE	DESCRIZIONE	QUANTITA'	POS	CODICE	DESCRIZIONE	QUANTITA'
1	4403011601	COPERCHIO FARO DICROICO		7	4403010118	PRESSACAVI FARO	
2	4403011602	FLANGIA FARO DICROICO		8	4403011608	PRESSACAVO	
3	4403012003	LENTE COMPLETA		9	4403011610	CORPO FARO	
4	4403011407	PORTALAMPADE		10	4403010074	LAMPADA ALOGENA ALLUMINATO	
5	4403011404	CAVO FARO		11	04582R0001	NICCHIA PROIETTORE	
6	4403011405	PRESSACAVI FARO DICROICO					

CODE **08556**

BESCHREIBUNG: **UWS MINI MIT EINBAUTOPF BETONBECKEN**

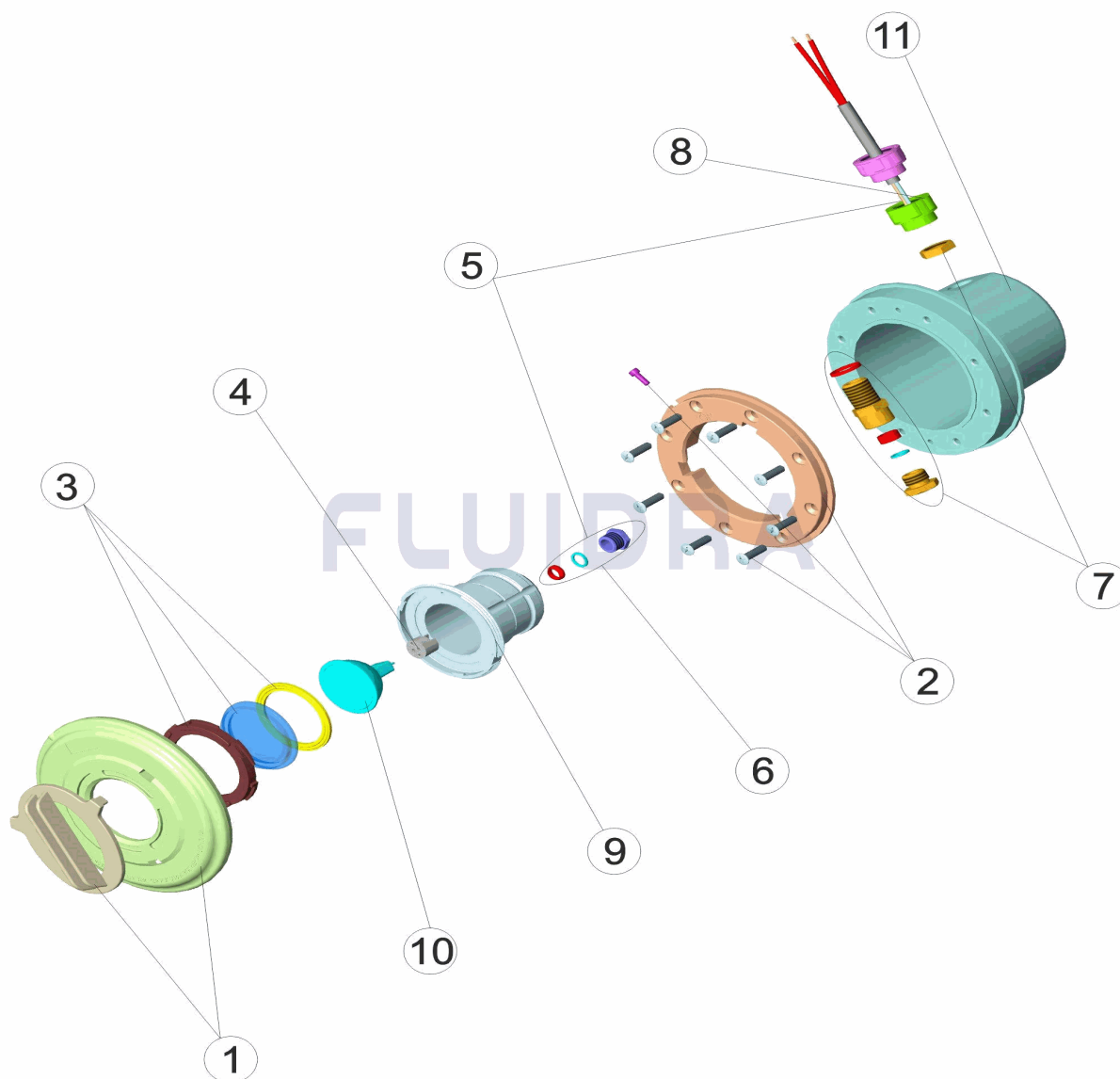


DEUTSCH

POS	CODE	BESCHREIBUNG	MENGE	POS	CODE	BESCHREIBUNG	MENGE
1	4403011601	ABDECKUNG UWS KALTLICHT LED		7	4403010118	QUETSCHVERSCHRAUBUNG UWS	
2	4403011602	FLANSCH UWS KALTLICHT		8	4403011608	KABELDURCHFÜHRUNG	
3	4403012003	LINSE KOMPLETT		9	4403011610	GEHÄUSE UWS BAJONETT	
4	4403011407	LAMPENFASSUNG		10	4403010074	LAMPE HALOGEN ALUMINIUM	
5	4403011404	UWS-KABEL		11	04582R0001	EINBAUTOPF UWS KALTLICHT FERTIGBEC	
6	4403011405	QUETSCHVERSCHRAUBUNG UWS KALTLI					

CODIGO **08556**

DESCRIÇÃO: **PROJECTOR MINI COM NICHOS PISCINA BETÃO**



PORTUGUES

POS	CODIGO	DESCRIÇÃO	JANTIDADE	POS	CODIGO	DESCRIÇÃO	JANTIDADE
1	4403011601	TAMPA PROJECTOR DICROICO		7	4403010118	PRENSAESTOPAS PROJECTOR	
2	4403011602	FLANGE PROTECTOR DICROICO		8	4403011608	PASSA-CABOS	
3	4403012003	LENTE COMPLETA		9	4403011610	CORPO PROJECTOR	
4	4403011407	PORTA-LÂMPADA		10	4403010074	LÂMPADA HALÓGENA ALUMINIZADA	
5	4403011404	CABO PROJECTOR		11	04582R0001	NICHO PROJECTOR	
6	4403011405	BUCIN PROJECTOR					