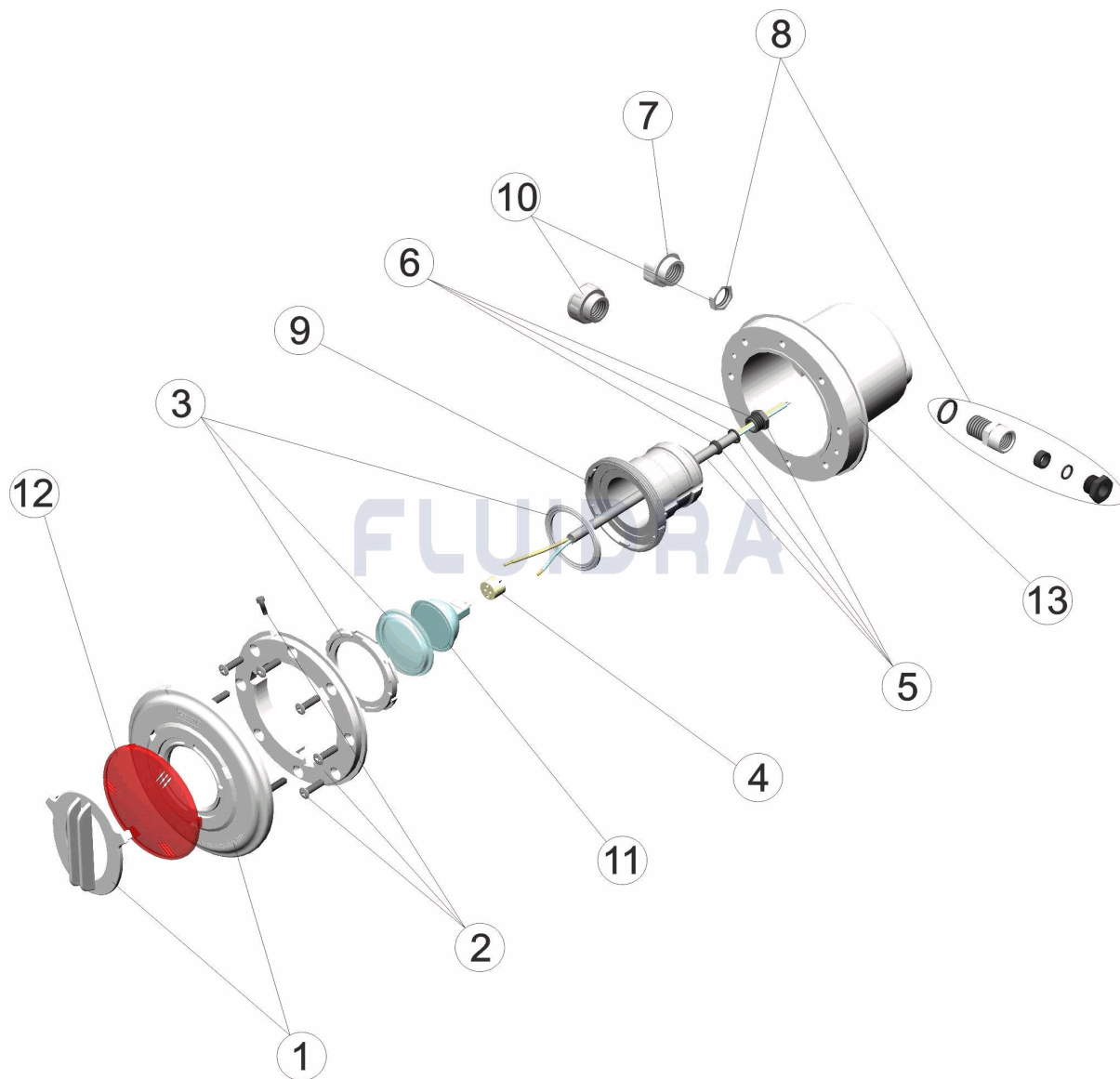


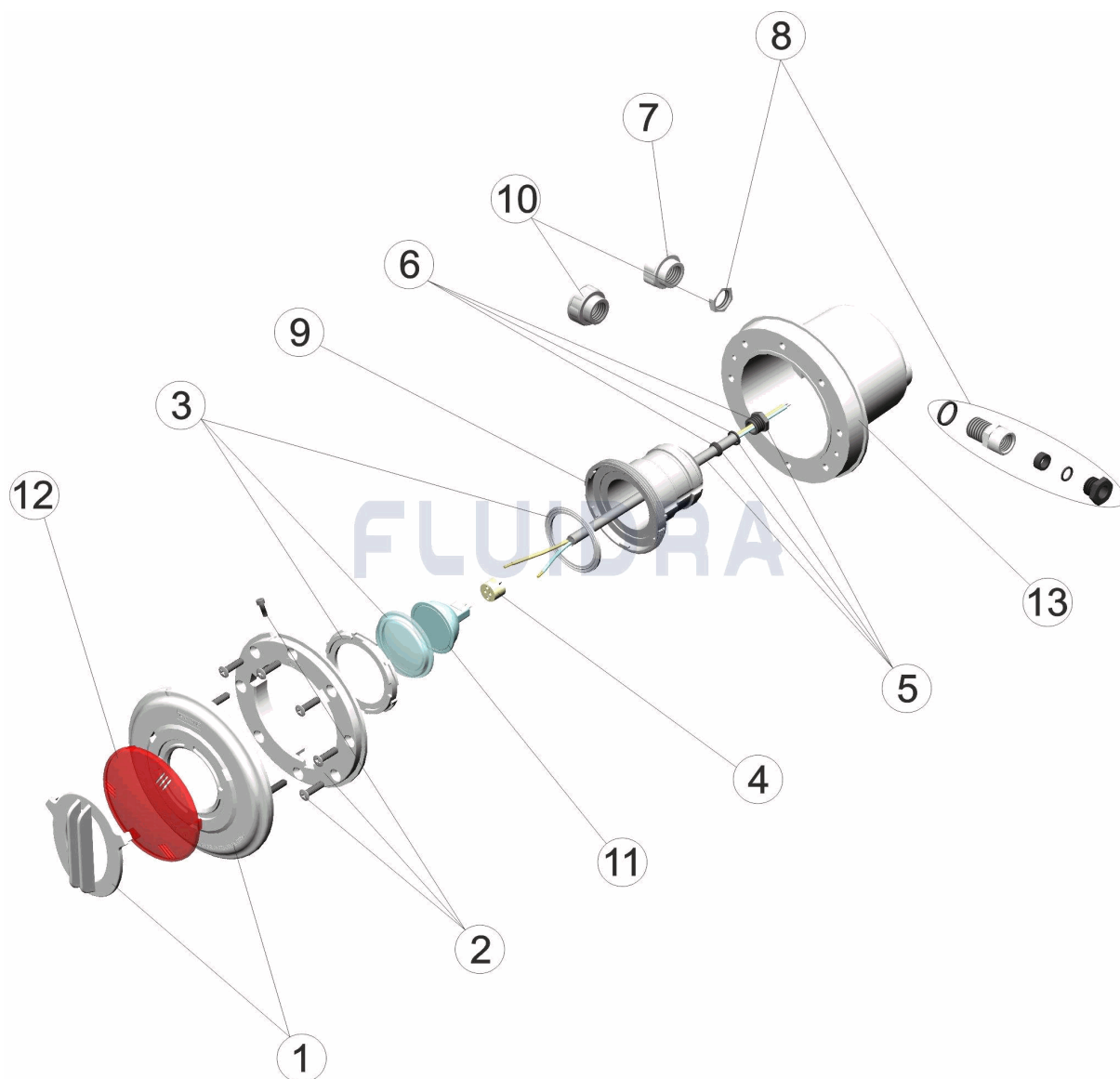
CODIGO **17885**

 DESCRIPCION: **PROYECTOR DICROICO**

**ESPAÑOL**

POS	CODIGO	DESCRIPCION	CANTIDAD	POS	CODIGO	DESCRIPCION	CANTIDAD
1	CE03014401	TAPA PROYECTOR DICROICO		9	CE03012610	CUERPO PROYECTOR	
2	CE03011602	BRIDA PROYECTOR DICROICO		10	CE03014104	ADAPTADOR PG-11 A M-25	
3	CE03012003	LENTE COMPLETA		11	CE03010074	LAMPARA HALOGENA ALUMINIZADA	
4	CE03011407	PORTALAMPARAS		12	20081R	LENTE ROJA PROY.DICROICO D.63	
5	CE03011404	CABLE PROYECTOR		12	20082R	LENTE AMARILLA PROY.DICROICO	
6	CE03011405	PRENSAESTOPAS PROYECTOR DICROICC		12	20083R	LENTE AZUL PROY.DICROICO D.63	
7	CE03011608	PASACABLES		12	20084R	LENTE VERDE PROY.DICROICO D.63	
8	CE03010118	PRENSAESTOPAS PROYECTOR		13	04582R0001	NICHO PROYECTOR DICROICO P.P.	

CODE 17885

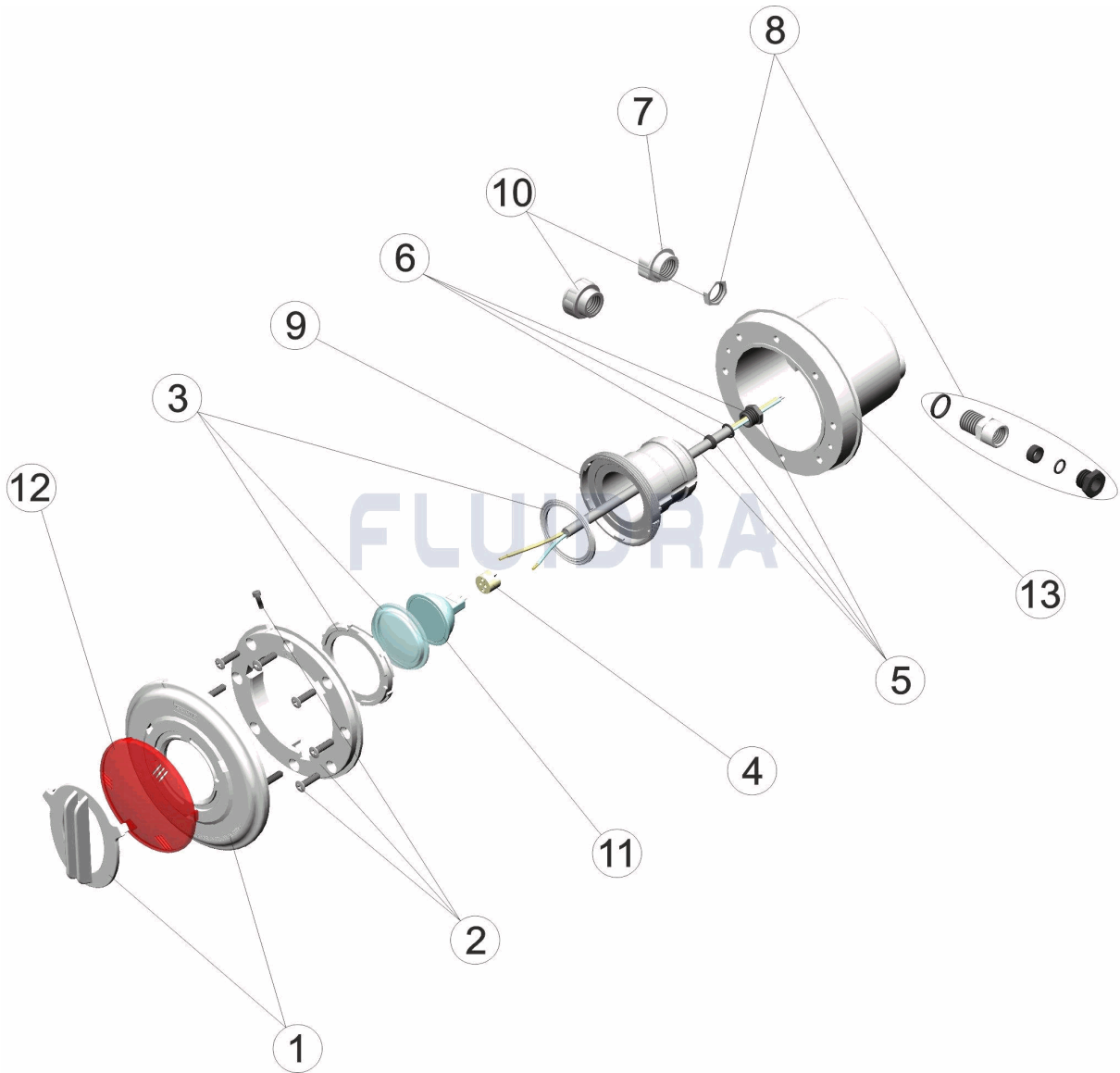
DESCRIPTION: PROJECTEUR DICHROÏQUE


**FRANCAIS**

POS	CODE	DESCRIPTION	QUANTITE	POS	CODE	DESCRIPTION	QUANTITE
1	CE03014401	CACHE VIS PROJECTEUR DICHROIQUE		9	CE03012610	CORPS DU PROJECTEUR	
2	CE03011602	BRIDE PROJECTEUR DICHROIQUE		10	CE03014104	ADAPTATEUR PG-11 A M-25	
3	CE03012003	LENTILLE COMPLETE		11	CE03010074	LAMPE HALOGENE ALUMINISE	
4	CE03011407	PORTE-LAMPE		12	20081R	LENTILLE ROUGE D.63	
5	CE03011404	CABLE PROJECTEUR		12	20082R	LENTILLE JANNE D.63	
6	CE03011405	PRESSE-ÉTOUPE ET JOINT PROJ. DICHRC		12	20083R	LENTILLE BLEUE D.63	
7	CE03011608	PASSE CABLE		12	20084R	LENTILLE VERTE D. 63	
8	CE03010118	PRESSE-ETOUPE PROJECTEUR		13	04582R0001	NICHE PROJECTEUR MINI	

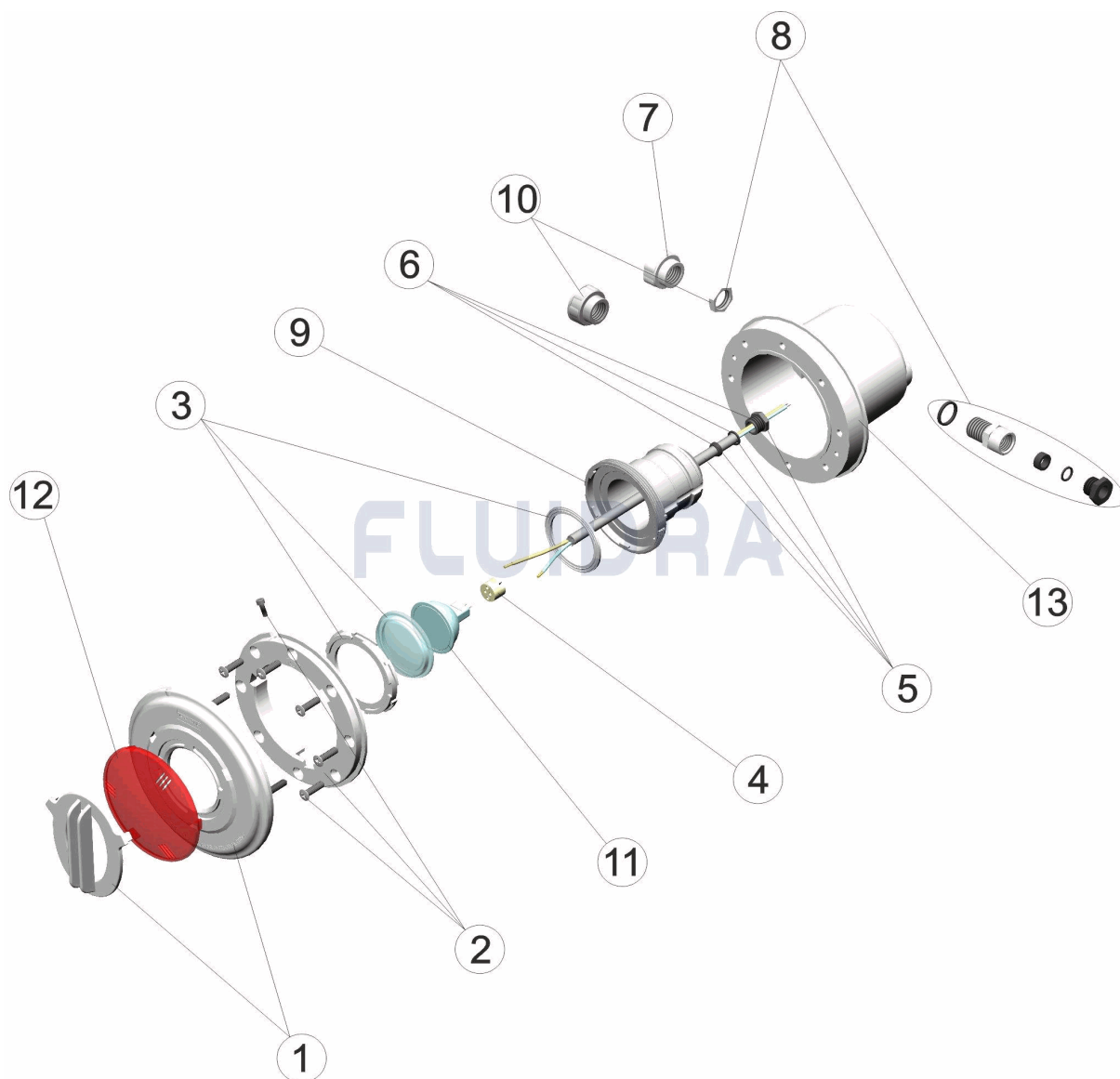
CODE 17885

DESCRIPTION: DICHROIC LIGHT


**ENGLISH**

POS	CODE	DESCRIPTION	QUANTITY	POS	CODE	DESCRIPTION	QUANTITY
1	CE03014401	DICHRO FACEPLATE		9	CE03012610	LIGHT BODY	
2	CE03011602	DICHRO LIGHT FLANGE		10	CE03014104	ADAPTOR PG-11 TO M-25	
3	CE03012003	LENS KIT		11	CE03010074	LAMP HALOGEN ALUMINIZED	
4	CE03011407	LAMP HOLDER		12	20081R	LENS RED D.63	
5	CE03011404	LIGHT CABLE		12	20082R	LENS YELLOW D.63	
6	CE03011405	PACKING GLAND		12	20083R	LENS BLUE D.63	
7	CE03011608	CONDUIT CONNECTOR		12	20084R	LENS GREEN D.63	
8	CE03010118	LIGHT PACKING GLAND		13	04582R0001	DICHROIC FLOODLAMP HOUSING	

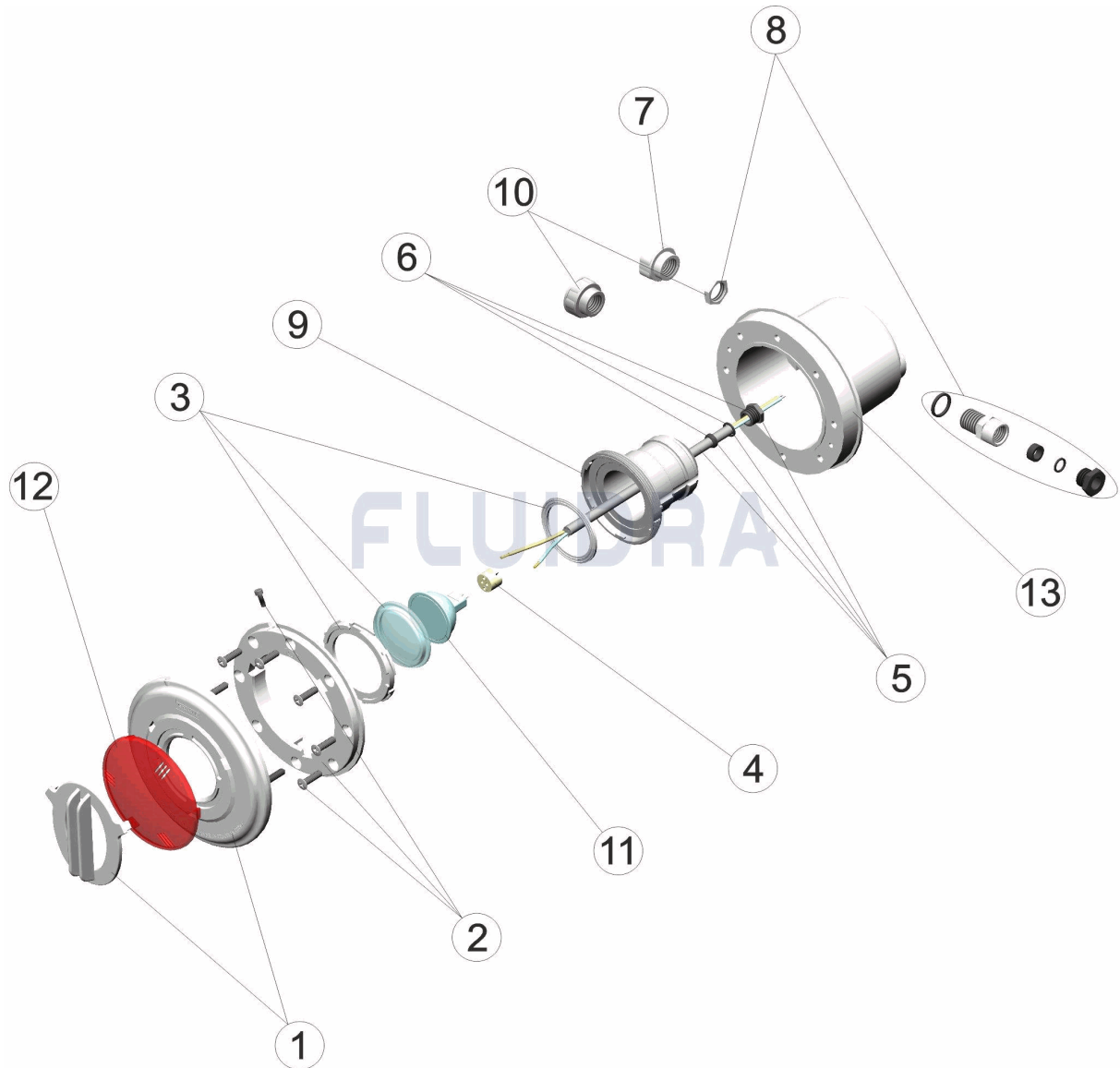
CODICE **17885**

 DESCRIZIONE: **PROIETTORE DICROICO**

**ITALIANO**

POS	CODICE	DESCRIZIONE	QUANTITA'	POS	CODICE	DESCRIZIONE	QUANTITA'
1	CE03014401	COPERCHIO FARO DICROICO		9	CE03012610	CORPO FARO	
2	CE03011602	FLANGIA FARO DICROICO		10	CE03014104	ADATTATORE PG-11 A M-25	
3	CE03012003	LENTE COMPLETA		11	CE03010074	LAMPADA ALOGENA ALLUMINATO	
4	CE03011407	PORTALAMPADE		12	20081R	LENTE ROSSA D.63	
5	CE03011404	CAVO FARO		12	20082R	LENTE GIALLIA D.63	
6	CE03011405	PRESSACAVI FARO DICROICO		12	20083R	LENTE AZZURA D.63	
7	CE03011608	PRESSACAVO		12	20084R	LENTE VERTE D.63	
8	CE03010118	PRESSACAVI FARO		13	04582R0001	NICCHIA PROIETTORE	

CODE 17885

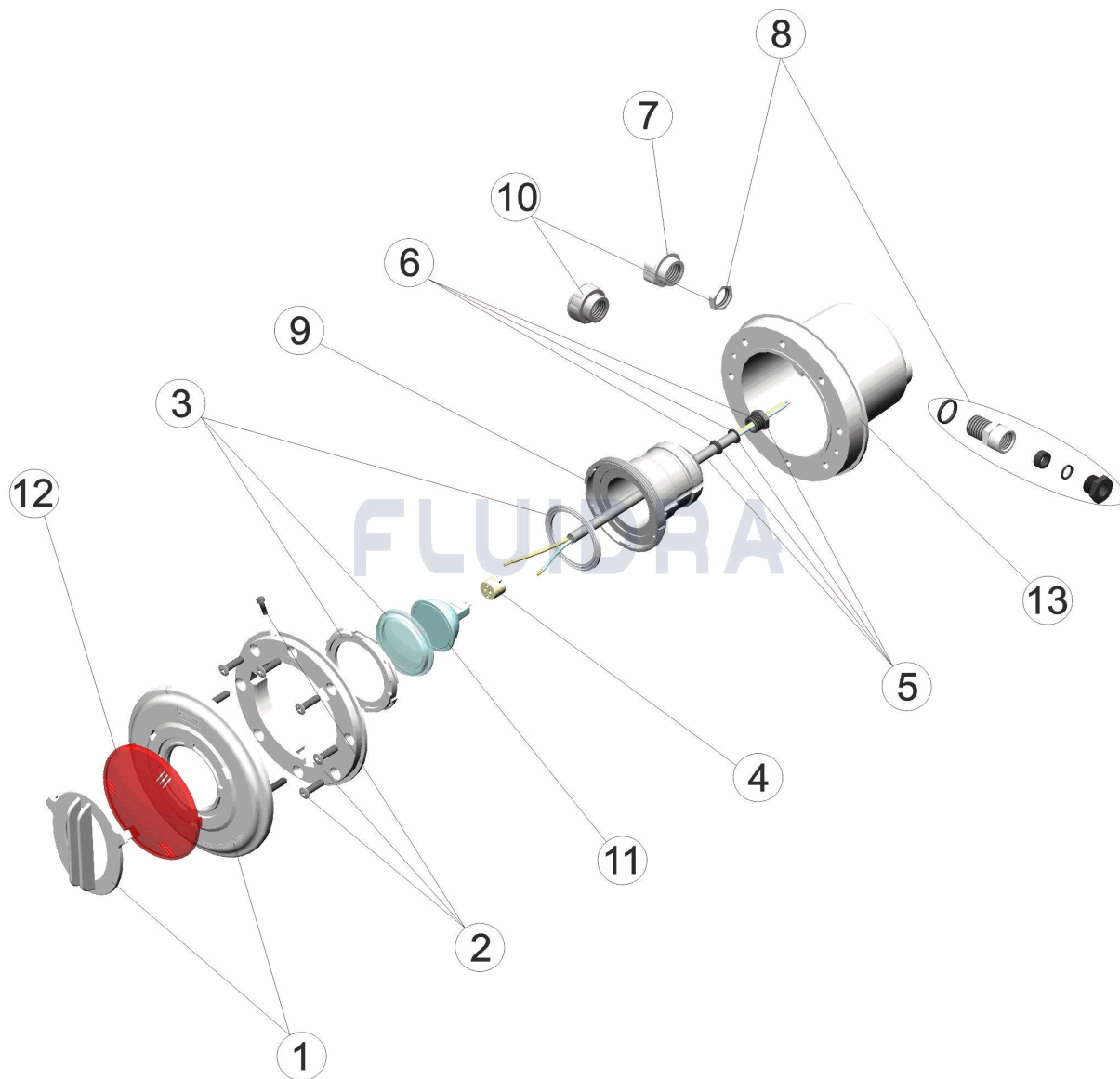
BESCHREIBUNG: UWS KALTLICHT


**DEUTSCH**

POS	CODE	BESCHREIBUNG	MENGE	POS	CODE	BESCHREIBUNG	MENGE
1	CE03014401	ABDECKUNG UWS KALTLICHT		9	CE03012610	GEHÄUSE UWS	
2	CE03011602	FLANSCH UWS KALTLICHT		10	CE03014104	ADAPTER PG11 ZU M-25	
3	CE03012003	LINSE KOMPLETT		11	CE03010074	LAMPE HALOGEN ALUMINIUM	
4	CE03011407	LAMPENFASSUNG		12	20081R	LINSE ROT UWS KALTLICHT D. 63	
5	CE03011404	UWS-KABEL		12	20082R	LINSE GELB UWS KALTLICHT	
6	CE03011405	QUETSCHVERSCHRAUBUNG UWS KALTLI		12	20083R	LINSE BLAU UWS KALTLICHT D. 63	
7	CE03011608	KABELDURCHFÜHRUNG		12	20084R	LINSE GRÜN UWS KALTLICHT D. 63	
8	CE03010118	QUETSCHVERSCHRAUBUNG UWS		13	04582R0001	EINBAUTOPF UWS KALTLICHT FERTIGBEC	

CODIGO 17885

DESCRIÇÃO: PROJECTOR DICRÓICO


**PORTUGUES**

POS	CODIGO	DESCRIÇÃO	JANTIDADE	POS	CODIGO	DESCRIÇÃO	JANTIDADE
1	CE03014401	TAMPA PROJECTOR DICROICO		9	CE03012610	CORPO PROJECTOR	
2	CE03011602	FLANGE PROTECTOR DICROICO		10	CE03014104	ADAPTADOR PG-11 A M-25	
3	CE03012003	LENTE COMPLETA		11	CE03010074	LÂMPADA HALÓGENA ALUMINIZADA	
4	CE03011407	PORTA-LÂMPADA		12	20081R	LENTE VERMELLA D.63	
5	CE03011404	CABO PROJECTOR		12	20082R	LENTE AMARE D.63	
6	CE03011405	BUCIN PROJECTOR		12	20083R	LENTE AZUL D.63	
7	CE03011608	PASSA-CABOS		12	20084R	LENTE VERDE D.63	
8	CE03010118	PRENSAESTOPAS PROJECTOR		13	04582R0001	NICHO PROJECTOR	