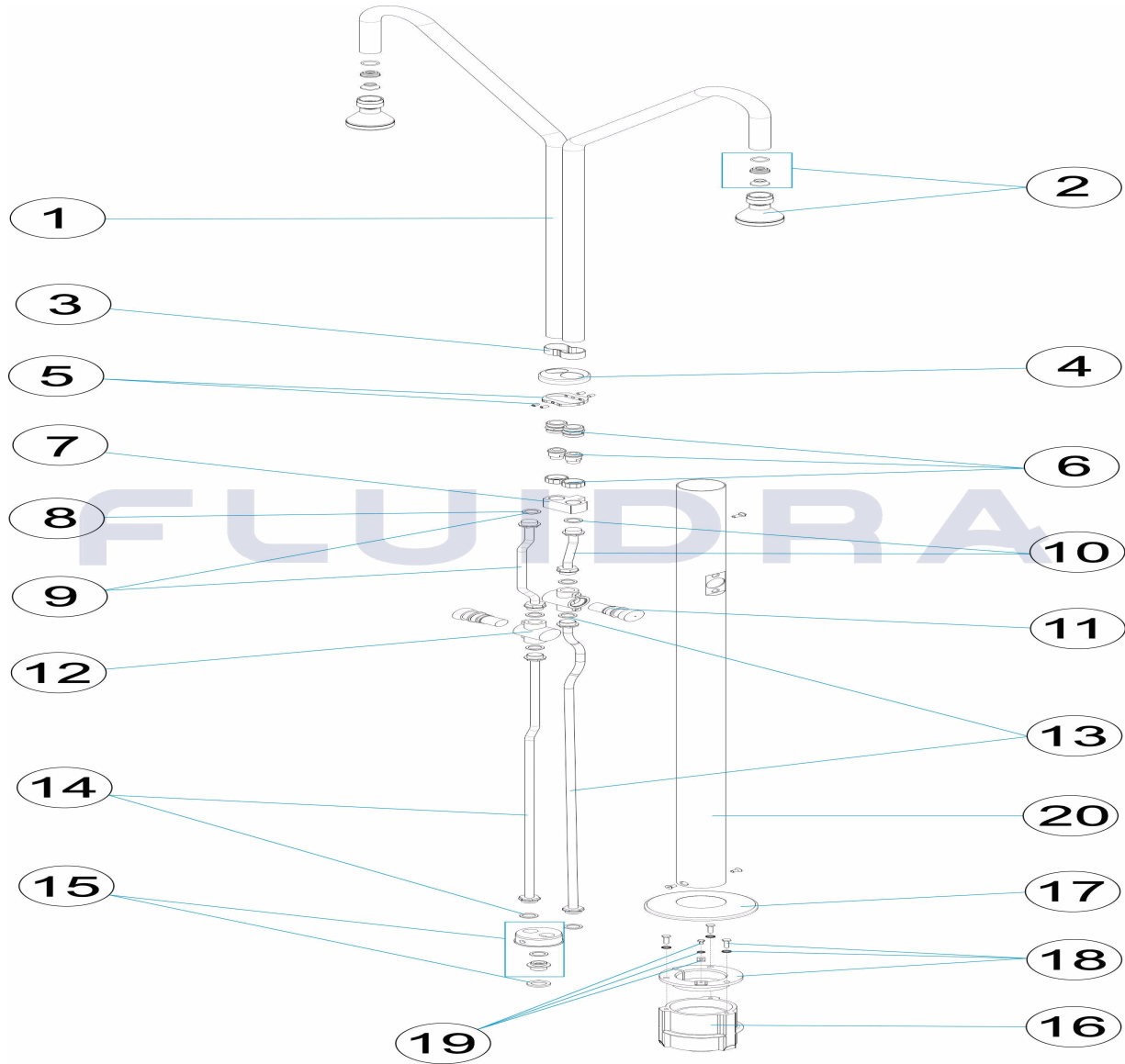


CODIGO **19947**

DESCRIPCION: **DUCHA 2 ROCIADORES Y 2 PULSADORES TEMP.**

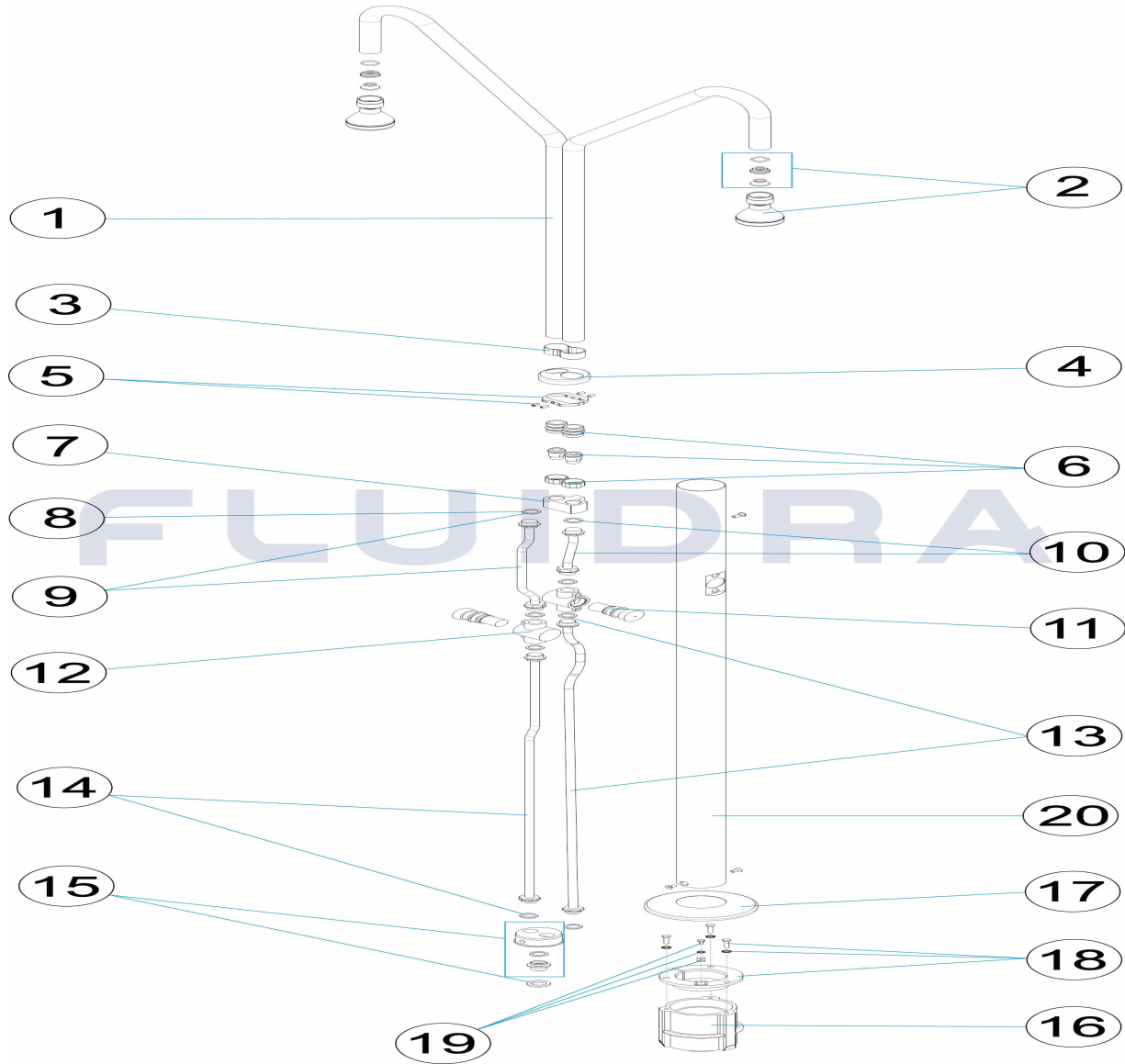


**ESPAÑOL**

POS	CODIGO	DESCRIPCION	CANTIDAD	POS	CODIGO	DESCRIPCION	CANTIDAD
1	4401040105	BRAZO DUCHA		11	4401040502	VALVULA TEMPORIZADORA	
2	4401040104	PIÑA DUCHA		12	4401040501	CUERPO VALVULA TEMPORIZADORA	
3	4401040710	TIRANTE BRAZOS DUCHA		13	4401040168	LATIGUILLO ½" MACHO - MACHO LOCO L=1	
4	4401040707	TAPETA EMBELL. SUP. 2 BRAZOS		14	4401040169	LATIGUILLO ½" MACHO - MACHO LOCO L=1	
5	4401040134	GRAPA BLOQUEO BRAZOS		15	4401040170	CJTO. CONECTOR INFERIOR	
6	4401040704	CJTO. ENLACE 3 PIEZAS		16	4401042811	CUERPO ANCLAJE DUCHA	
7	4401043005	SOPORTE SUPERIOR		17	4401040507	TAPETA EMBELLECEDORA INFERIOR	
8	4401040165	JUNTA PLANA D. 23,5X17X2		18	4401042810	FIJACION ANCLAJE DUCHA D 63	
9	4401040166	LATIGUILLO ½" MACHO - MACHO LOCO L=		19	4401040903	TOMA DE TIERRA	
10	4401040167	LATIGUILLO ½" MACHO - MACHO LOCO L=		20	08731R0014	TUBO EXTERIOR D. 63	

CODE 19947

DESCRIPTION: DOUCHE 2 POMMEUX ET 2 BOUTONS-POUSOIRS TEMP.

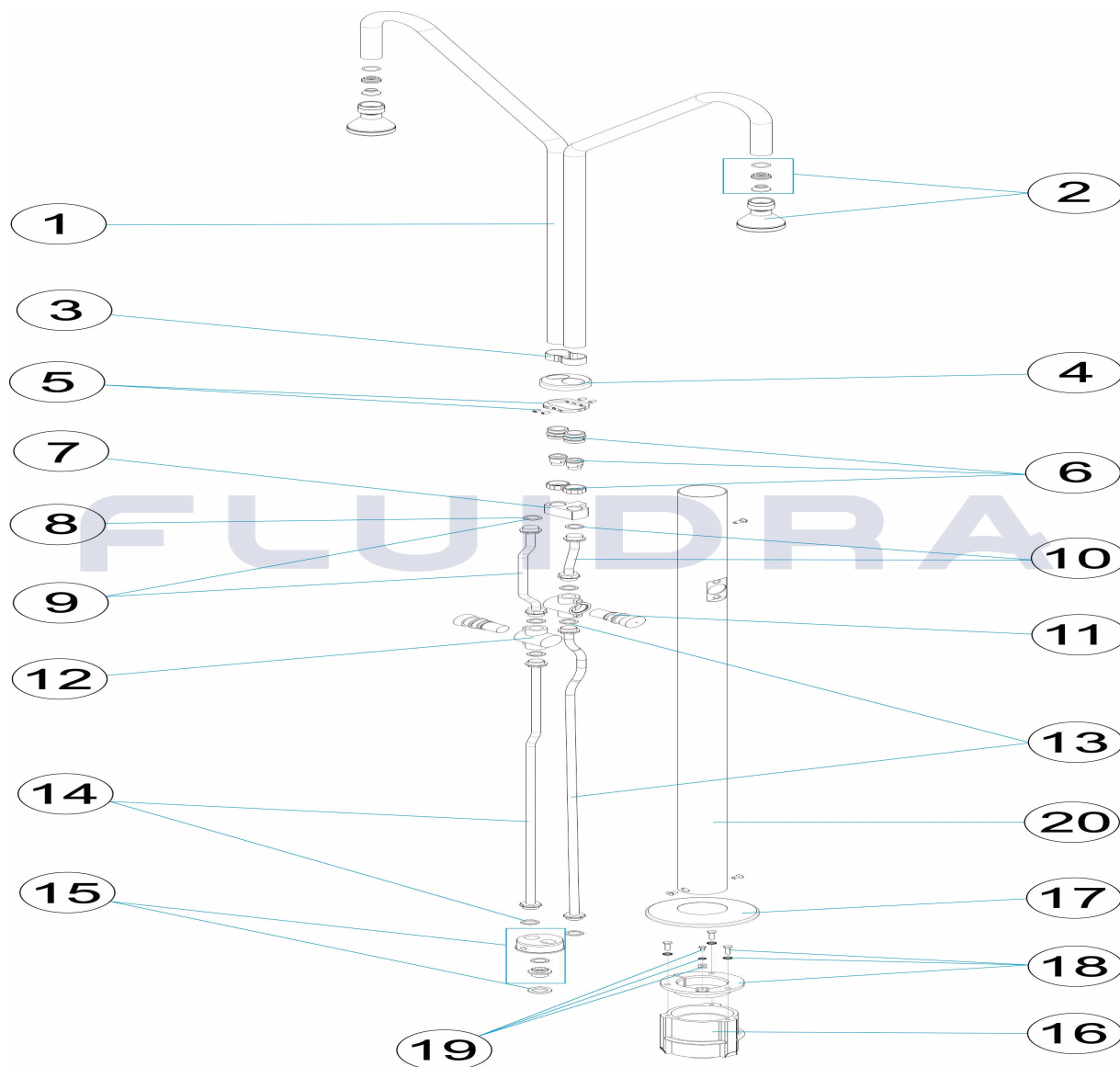


FRANCAIS

POS	CODE	DESCRIPTION	QUANTITE	POS	CODE	DESCRIPTION	QUANTITE
1	4401040105	BRAS DE DOUCHE		11	4401040502	BOUTON POUSSOIR	
2	4401040104	POMMEAU DE DOUCHE		12	4401040501	TE ROBINET DE DOUCHE TEMPORISÉ	
3	4401040710	COLLIER DE MAINTIEN EXTÉRIEUR DE TU		13	4401040168	TUYAU 1/2" M - M L=1050 MM "	
4	4401040707	ENJOLIVEUR SUPERIEUR 2 BRAS.		14	4401040169	TUYAU 1/2" M - M L=895 MM "	
5	4401040134	AGRAFE BLOCAGE BRAS		15	4401040170	JEU DE CONNECTEUR INFERIEUR	
6	4401040704	UNION 3 PIECES		16	4401042811	CORPS D'ANCRAGE DE DOUCHE	
7	4401043005	SUPPORT SUPÉRIEUR		17	4401040507	ENJOLIEVEUR INFERIEUR	
8	4401040165	JOINT PLAT D. 23,5X17X2		18	4401042810	FIXATION ANCRAGE DOUCHE D 63	
9	4401040166	TUYAU 1/2" M - M L=310 MM "		19	4401040903	PRISE DE TERRE	
10	4401040167	TUYAU 1/2" M - M L=150 MM "		20	08731R0014	TUBE EXTERIEUR D.63	

CODE **19947**

DESCRIPTION: **SHOWER 2 SHOWER HEADS AND 2 TIMER BUTTONS**

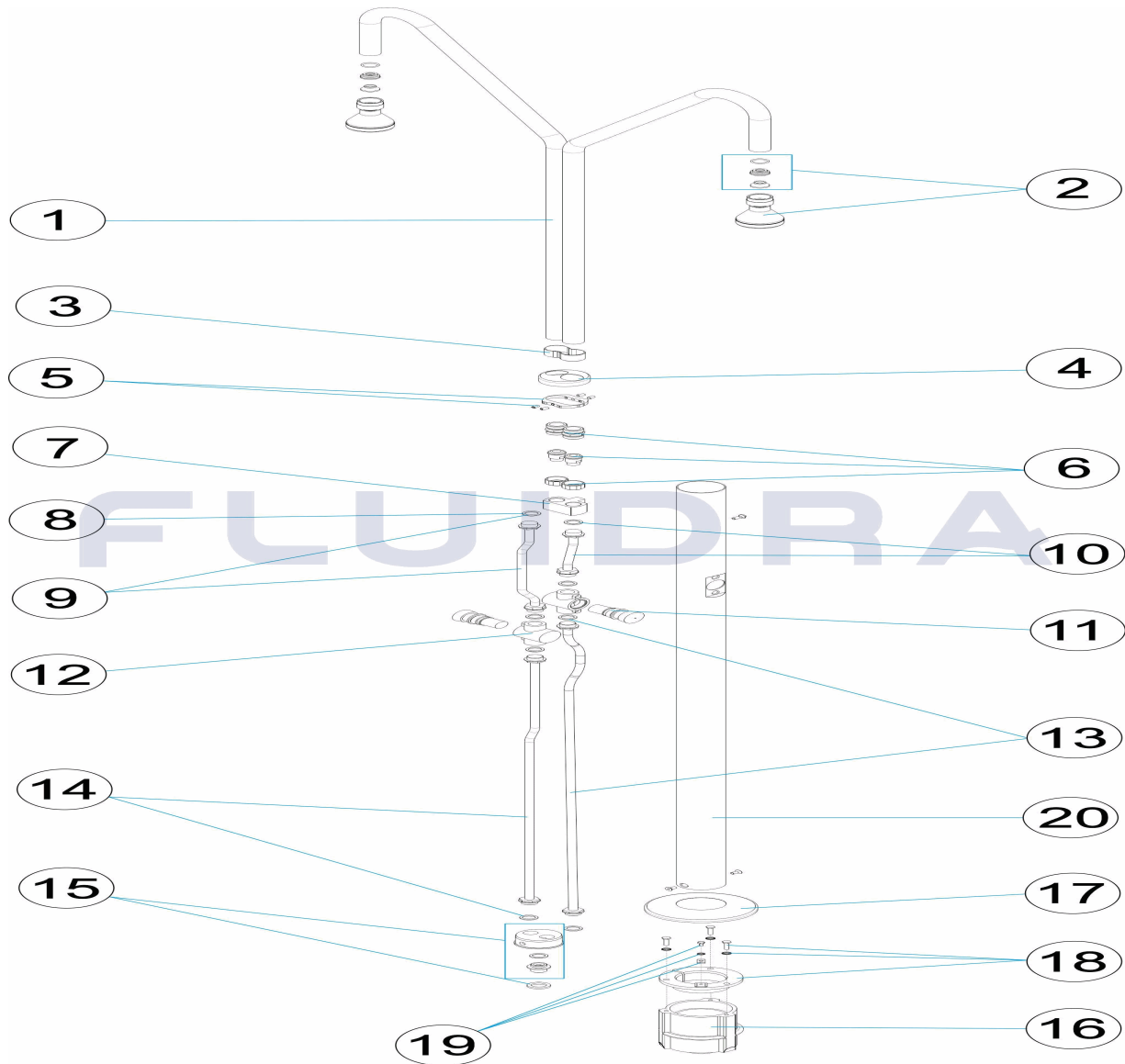


**ENGLISH**

POS	CODE	DESCRIPTION	QUANTITY	POS	CODE	DESCRIPTION	QUANTITY
1	4401040105	SHOWER ARM		11	4401040502	TIMER VALVE	
2	4401040104	SHOWER HEAD		12	4401040501	TIMER VALVE BODY	
3	4401040710	SHOWER ARMS HOLDER		13	4401040168	FLEXIBLE HOSE 1/2" M - M L=1050 MM "	
4	4401040707	2 ARM SUPPORT ESCUTCHEON PLATE		14	4401040169	FLEXIBLE HOSE 1/2" M - M L=895 MM "	
5	4401040134	ARM BLOCKING PIN		15	4401040170	SET BOTTOM CONNECTOR	
6	4401040704	3 PIECE UNION		16	4401042811	SHOWER ANCHORING FIXTURE	
7	4401043005	UPPER SUPPORT		17	4401040507	BOTTOM ESCUTCHEON PLATE	
8	4401040165	INLET GASKET D. 23,5X17X2		18	4401042810	SHOWER ANCHOR D 63	
9	4401040166	FLEXIBLE HOSE 1/2" M - M L=310 MM "		19	4401040903	EARTH CONNECTION	
10	4401040167	FLEXIBLE HOSE 1/2" M - M L=150 MM "		20	08731R0014	EXTERNAL TUBE .63	

CODICE 19947

DESCRIZIONE: DOCCIA 2 SPRUZZATORI E 2 PULSANTI TEMPORIZZATI

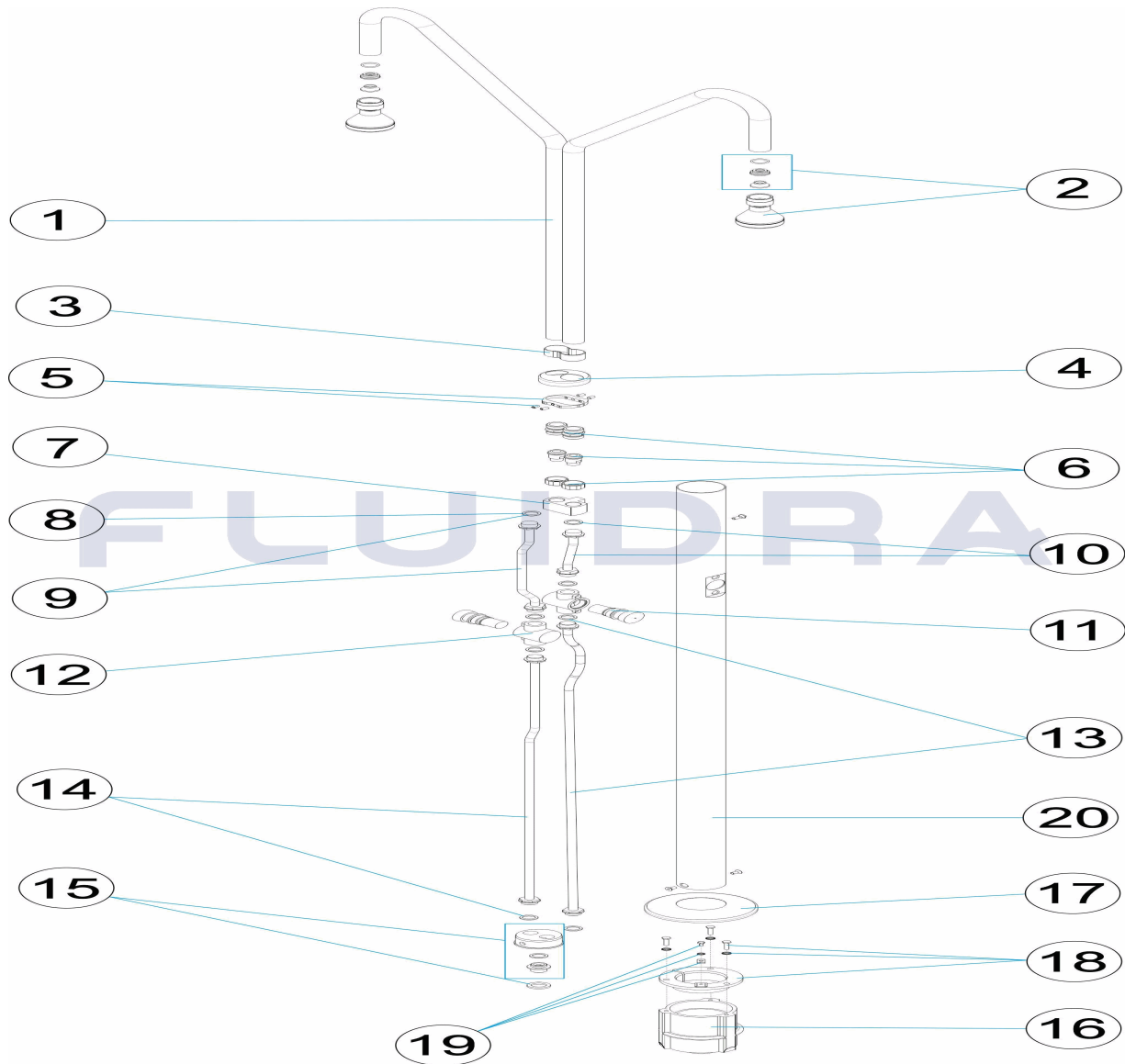


ITALIANO

POS	CODICE	DESCRIZIONE	QUANTITA'	POS	CODICE	DESCRIZIONE	QUANTITA'
1	4401040105	BRACCIO DOCCIA		11	4401040502	VALVOLA TEMPORIZZATA	
2	4401040104	DIFFUSORE DOCCIA		12	4401040501	CORPO VALVOLA TEMPORIZZATA	
3	4401040710	TIRANTE BRACCIO DOCCIA		13	4401040168	SPINOTTO 1/2" M - M L=1050 MM "	
4	4401040707	COPRIFLANGIA SUPERIORE 2 BRACCI		14	4401040169	SPINOTTO 1/2" M - M L=895 MM "	
5	4401040134	GRAFFA DI BLOCCAGGIO BRACCIA		15	4401040170	SET. CONNETTORE INFERIORE	
6	4401040704	KIT BOCCHETTONE		16	4401042811	CORPO ANCORAGGIO DOCCIA	
7	4401043005	SUPPORTO SUPERIORE		17	4401040507	COPRIFLANGIA INFERIORE	
8	4401040165	GUERNICIONE PIANA D. 23,5X17X2		18	4401042810	FISSAGGIO ANCORAGGIO DOCCIA D 63	
9	4401040166	SPINOTTO 1/2" M - M L=310 MM "		19	4401040903	PRESA A TERRA	
10	4401040167	SPINOTTO 1/2" M - M L=150 MM "		20	08731R0014	TUBO ESTERNO D.63	

CODE **19947**

BESCHREIBUNG: **DUSCHE 2 DUSCHKÖPFE UND 2 REGELDRUCKKNÖPFE**

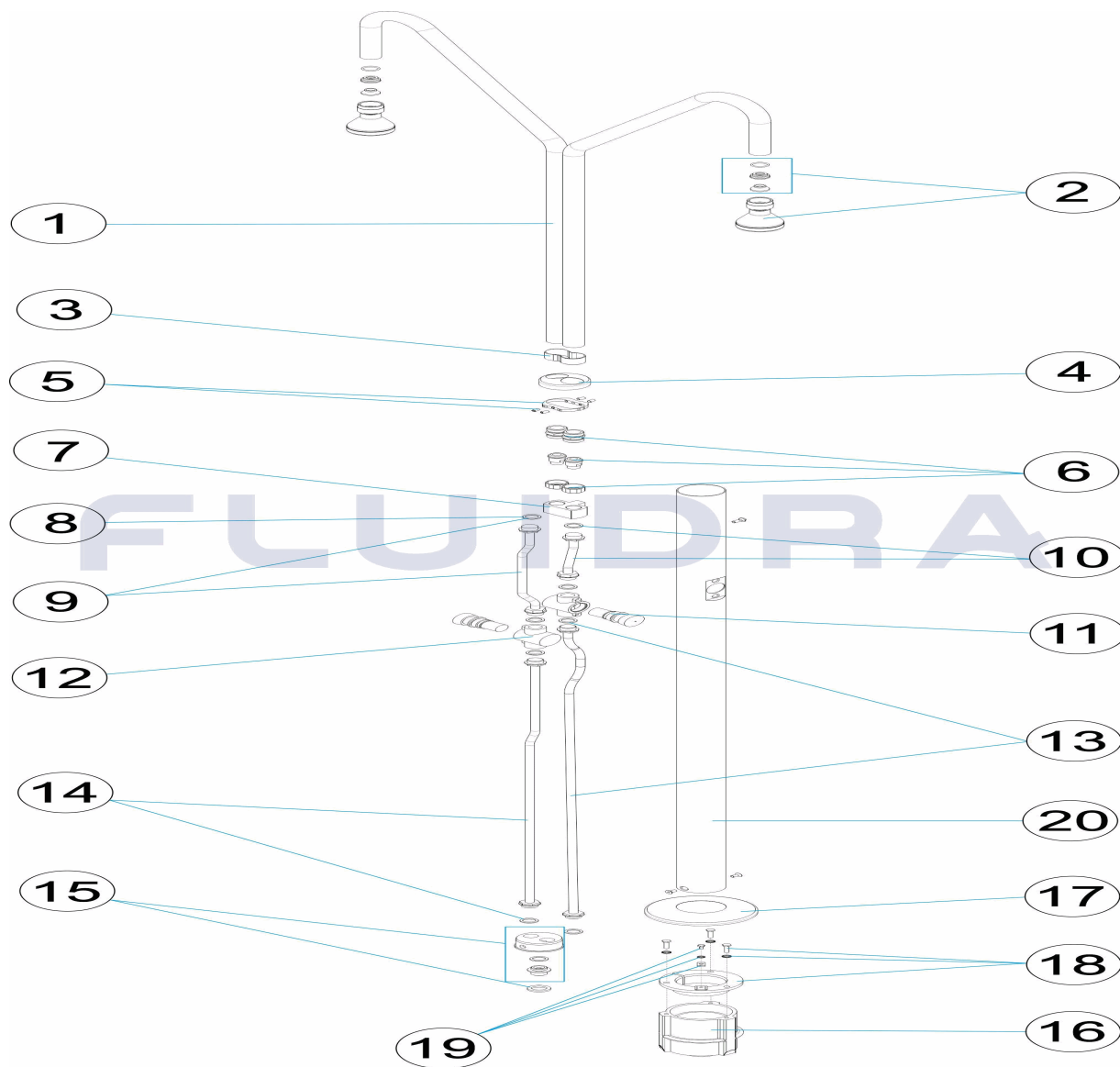


**DEUTSCH**

POS	CODE	BESCHREIBUNG	MENGE	POS	CODE	BESCHREIBUNG	MENGE
1	4401040105	DUSCHARM		11	4401040502	REGLERVENTIL	
2	4401040104	DUSCHKOPF		12	4401040501	GEHÄUSE REGLERVENTIL	
3	4401040710	ZUGHALTERUNG DUSCHARME		13	4401040168	SCHLAUCHLEITUNG 1/2" NIPPEL - NIPPEL (	
4	4401040707	DEKO-ABSCHLUSSRING OBEN 2 ARME		14	4401040169	LATIGUILLOSCHLAUCHLEITUNG 1/2" NIPPE	
5	4401040134	BLOCKIERKLAMMER ARME		15	4401040170	SET UNTERES VERBINDUNGSSTÜCK	
6	4401040704	SET ANSCHLUSS 3 STK		16	4401042811	VERANKERUNG DUSCHEINHEIT	
7	4401043005	HALTERUNG OBEN		17	4401040507	DEKO-ABSCHLUSSRING UNTEN	
8	4401040165	FLACHDICHTUNG D. 23,5 X 17 X 2		18	4401042810	FIXIERUNG DUSCHVERANKERUNG D. 63	
9	4401040166	SCHLAUCHLEITUNG 1/2" NIPPEL - NIPPEL		19	4401040903	ERDUNG	
10	4401040167	SCHLAUCHLEITUNG 1/2" NIPPEL - NIPPEL		20	08731R0014	AUSSENROHR D. 63	

CODIGO **19947**

DESCRIÇÃO: **DUCHE 2 DIFUSORES E 2 TORNEIRAS TEMP.**



**PORTUGUES**

POS	CODIGO	DESCRIÇÃO	JANTIDADE	POS	CODIGO	DESCRIÇÃO	JANTIDADE
1	4401040105	BRAÇO CHUVEIRO		11	4401040502	VÁLVULA TEMPORIZADA	
2	4401040104	REGADOR CHUVEIRO		12	4401040501	CORPO VÁLVULA TEMPORIZADORA	
3	4401040710	TIRANTE BRAÇOS CHUVEIRO		13	4401040168	MANGA 1/2" M - M L=1050 MM "	
4	4401040707	TAMPA EMBELEZADORA SUP. 2 BRAÇOS		14	4401040169	MANGA 1/2" M - M L=895 MM "	
5	4401040134	GANCHO BLOQUEIO BRAÇOS		15	4401040170	CONJUNTO. CONECTOR INFERIOR	
6	4401040704	CONJUNTO UNIÃO 3 PEÇAS		16	4401042811	CORPO ÂNCORA CHUVEIRO	
7	4401043005	SUPORTE SUPERIOR		17	4401040507	TAMPA EMBELEZADORA INFERIOR	
8	4401040165	JUNTA PLANA D. 23,5X17X2		18	4401042810	FIXAÇÃO ÂNCORA CHUVEIRO D 63	
9	4401040166	MANGA 1/2" M - M L=310 MM "		19	4401040903	LIGAÇÃO A TERRA	
10	4401040167	MANGA 1/2" M - M L=150 MM "		20	08731R0014	TUBO EXTERIOR D.63	