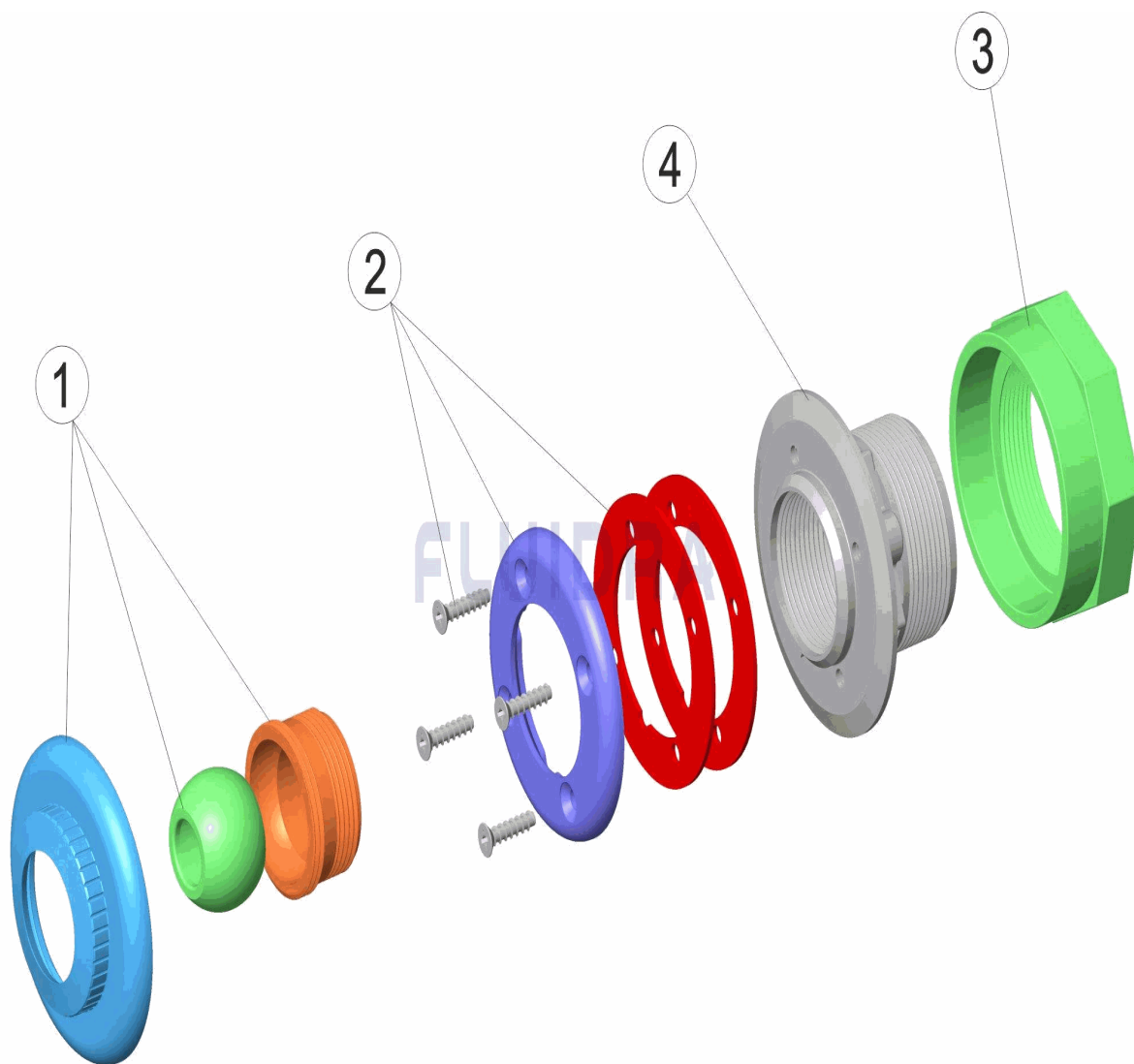


CODIGO **32450, 32451**

DESCRIPCION: **BOQUILLA IMPULSION PIS. PREF. LINER ENCOLAR Y ROSCAR**



**ESPAÑOL**

POS	CODIGO	DESCRIPCION	CANTIDAD	POS	CODIGO	DESCRIPCION	CANTIDAD
1	4402044803	BOLA COMPLETA 3/4"		4	* 25496R0001	CUERPO BOQUILLA LINER PARA ROSCAR	
2	4402044802	ARO Y JUNTA PISC. PREF.		4	* 31412R0001	CUERPO BOQUILLA 100X42,5/LINER/INT.EN	
3	4402045403	TUERCA HEXAGONAL 2" BS "					

**CODIGO 32450, 32451**

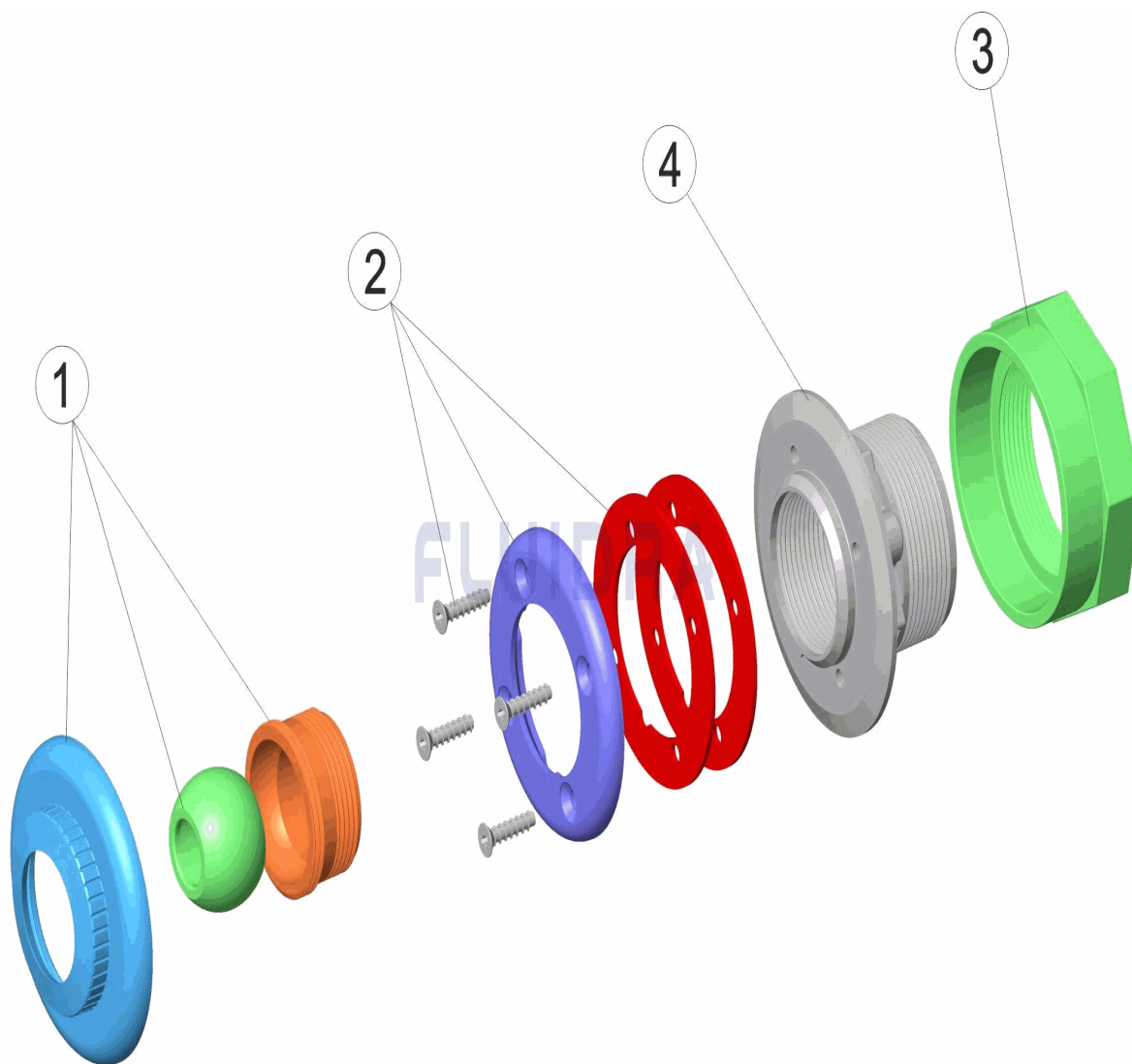
**DESCRIPCION: BOQUILLA IMPULSION PIS. PREF. LINER ENCOLAR Y ROSCAR**

**OBSERVACIONES**

POS	CODIGO	OBSERVACIONES
4	* 25496R0001	PARA: 32450
4	* 31412R0001	PARA: 32451

CODE 32450, 32451

DESCRIPTION: BUSE REFOULEMENT PIS. PRÉF. LINER ENCOLLER ET VISSER



FRANCAIS

POS	CODE	DESCRIPTION	QUANTITE	POS	CODE	DESCRIPTION	QUANTITE
1	4402044803	ENSEMBLE ROTULE COMPLET 3/4"	4	*	25496R0001	CORPS BUSE LINER POUR TARAUD	
2	4402044802	JOINT ET BRIDE POUR LINER	4	*	31412R0001	CORPS BOUCHE 100X42,5 A COLLER	
3	4402045403	RONDELLE HEXAGONALE 2" BS "					

CODE **32450, 32451**

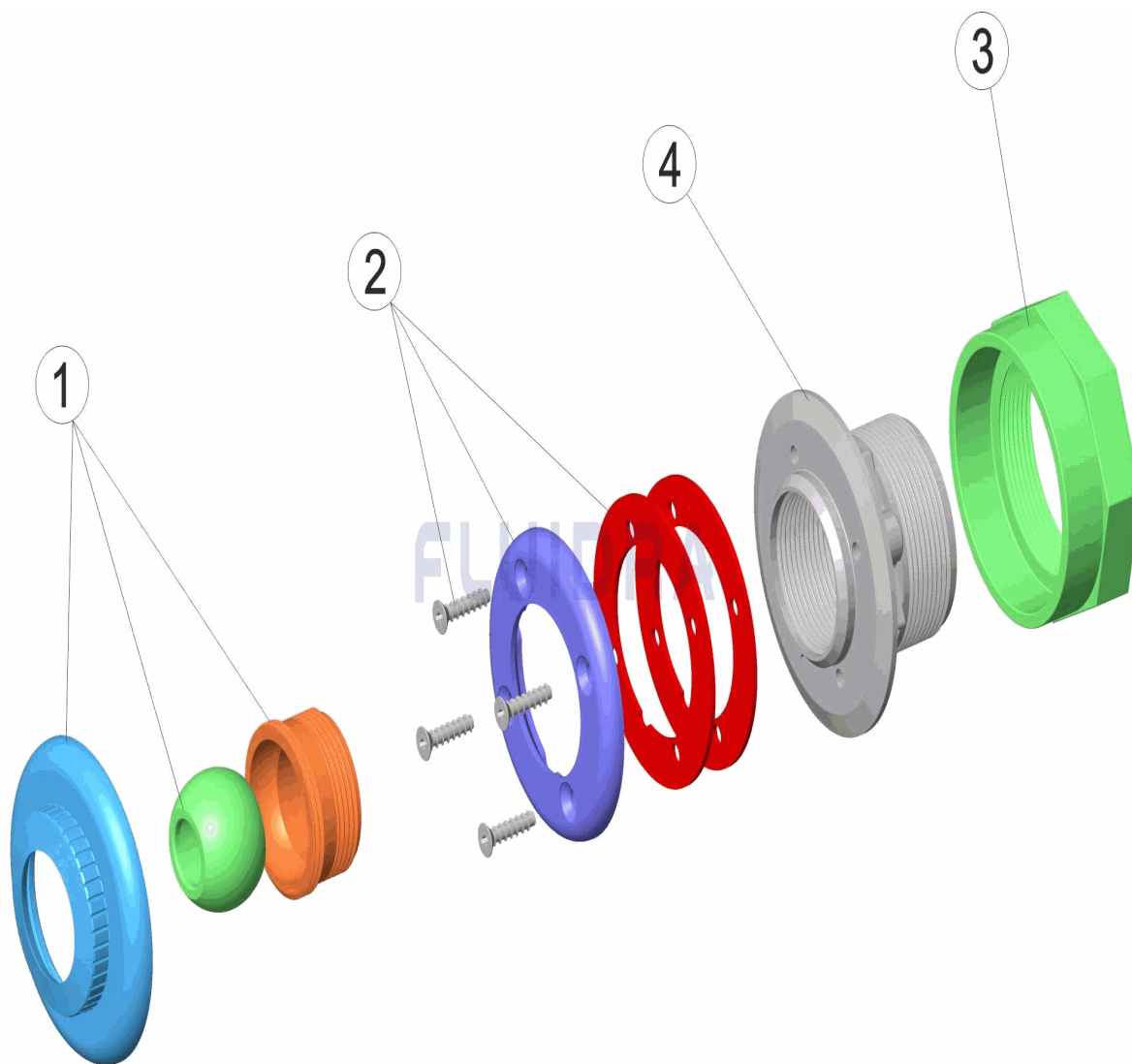
DESCRIPTION: **BUSE REFOULEMENT PIS. PRÉF. LINER ENCOLLER ET VISSER**

**OBSERVATIONS**

POS	CODE	OBSERVATIONS
4	* 25496R0001	POUR: 32450
4	* 31412R0001	POUR: 32451

CODE **32450, 32451**

DESCRIPTION: **RETURN INLET PREFAB POOL, LINER SOLVENT-WELD AND SCREW-IN**



**ENGLISH**

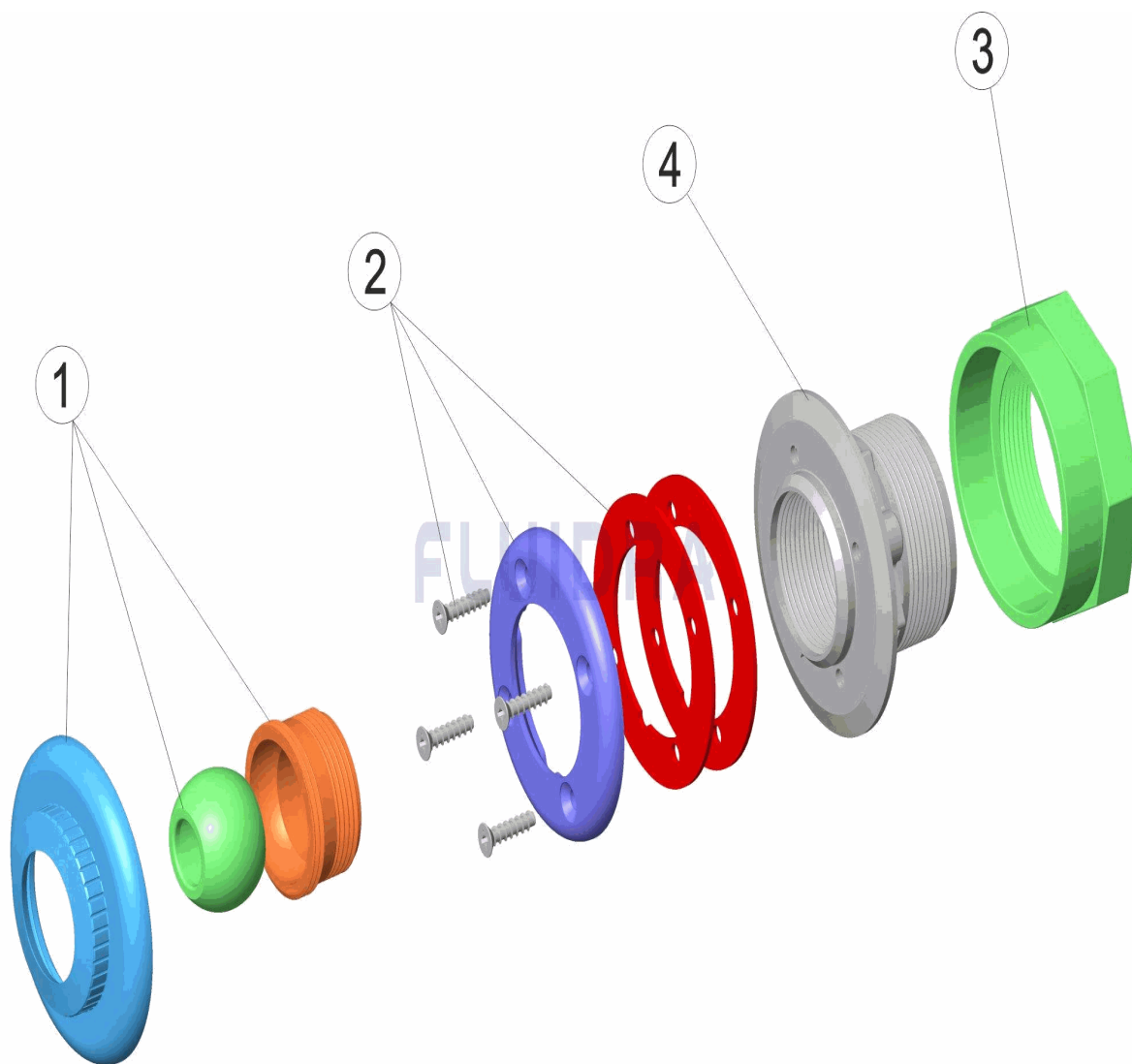
POS	CODE	DESCRIPTION	QUANTITY	POS	CODE	DESCRIPTION	QUANTITY
1	4402044803	EYEBALL ASSEMBLY 3/4"		4	* 25496R0001	THREADED LINER NOZZLE BODY	
2	4402044802	RING AND GASKET FOR LINER POOLS		4	* 31412R0001	100X42.5 NOZZLE BODY/LINER/INT.SOLVENT	
3	4402045403	HEXAGONAL BOLT 2" BS "					

CODE                    **32450, 32451**DESCRIPTION: **RETURN INLET PREFAB POOL, LINER SOLVENT-WELD AND SCREW-IN****OBSERVATIONS**

POS	CODE	OBSERVATIONS
4	* 25496R0001	FOR: 32450
4	* 31412R0001	FOR: 32451

CODICE **32450, 32451**

DESCRIZIONE: **BOCCHETTA IMPULSIONE PISC. PREF. INCOLLARE E FILETTARE**



**ITALIANO**

POS	CODICE	DESCRIZIONE	QUANTITA'	POS	CODICE	DESCRIZIONE	QUANTITA'
1	4402044803	SFERA COMPLETA 3/4"		4	* 25496R0001	CORPO BOCCHETTONE LINER PER FILETT	
2	4402044802	COPRIFLANGIA E GUARNIZIONE PISC. PRI		4	* 31412R0001	CORPO BOCCHETTA 100X42,5/LINER/INT. II	
3	4402045403	GHIERA ESAGONALE 2					

CODICE **32450, 32451**

DESCRIZIONE: **BOCCHETTA IMPULSIONE PISC. PREF. INCOLLARE E FILETTARE**

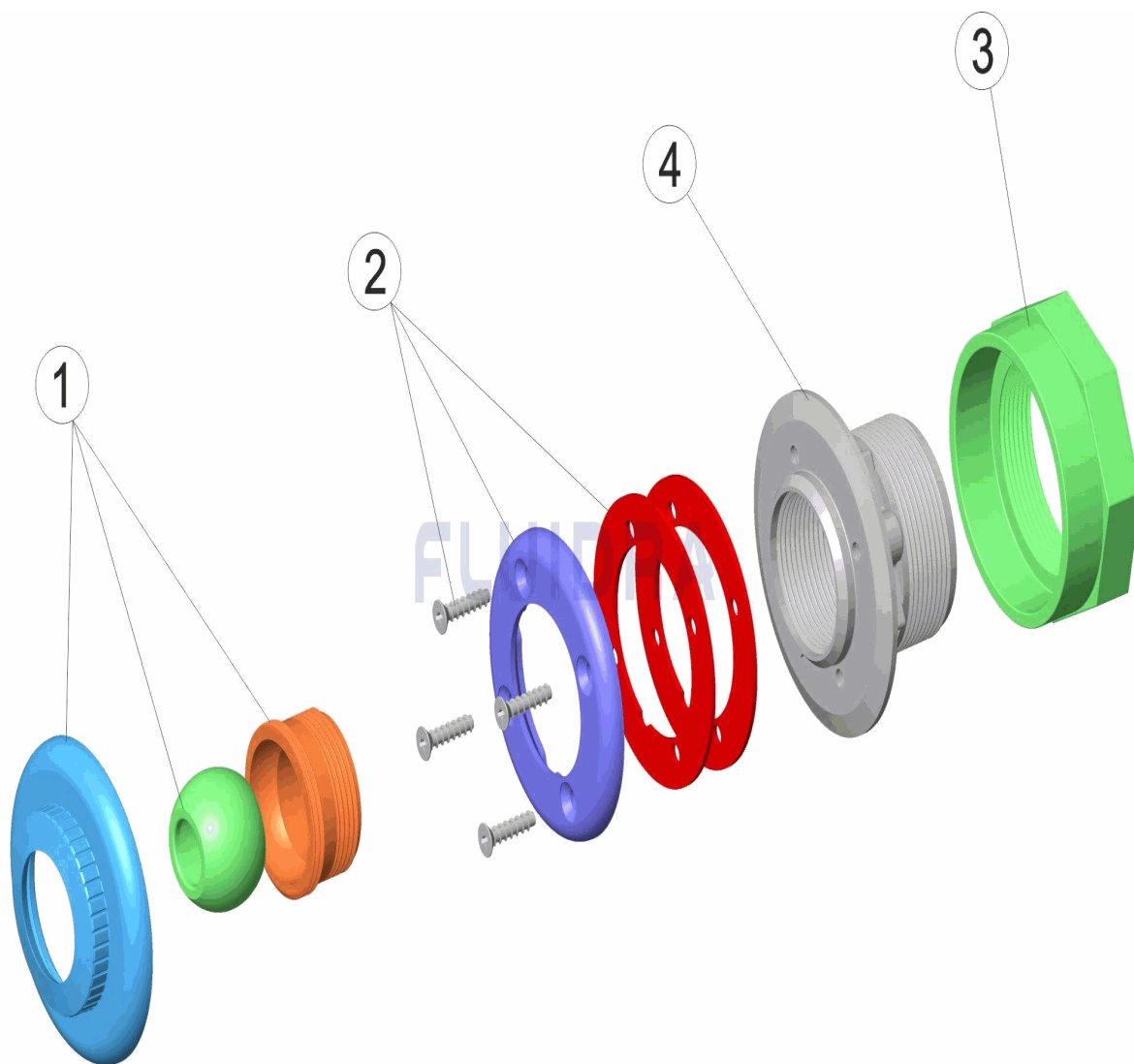
**OSSERVAZIONI**

POS	CODICE	OSSERVAZIONI
4	* 25496R0001	PER: 32450
4	* 31412R0001	PER: 32451



CODE **32450, 32451**

BESCHREIBUNG: **EINLAUFDÜSE FERTIGBECKEN FOLIE KLEBEN UND SCHRAUBEN**



**DEUTSCH**

POS	CODE	BESCHREIBUNG	MENGE	POS	CODE	BESCHREIBUNG	MENGE
1	4402044803	KUGEL KOMPLETT 3/4"		4	* 25496R0001	GEHÄUSE DÜSE FOLIE GEWINDE	
2	4402044802	RING UND DICHTUNG FERTIGBECKEN		4	* 31412R0001	GEHÄUSE DÜSE 100 X 42,5/FOLIE/INT.ZUM	
3	4402045403	SECHSKANTMUTTER 2" BS "					

CODE **32450, 32451**

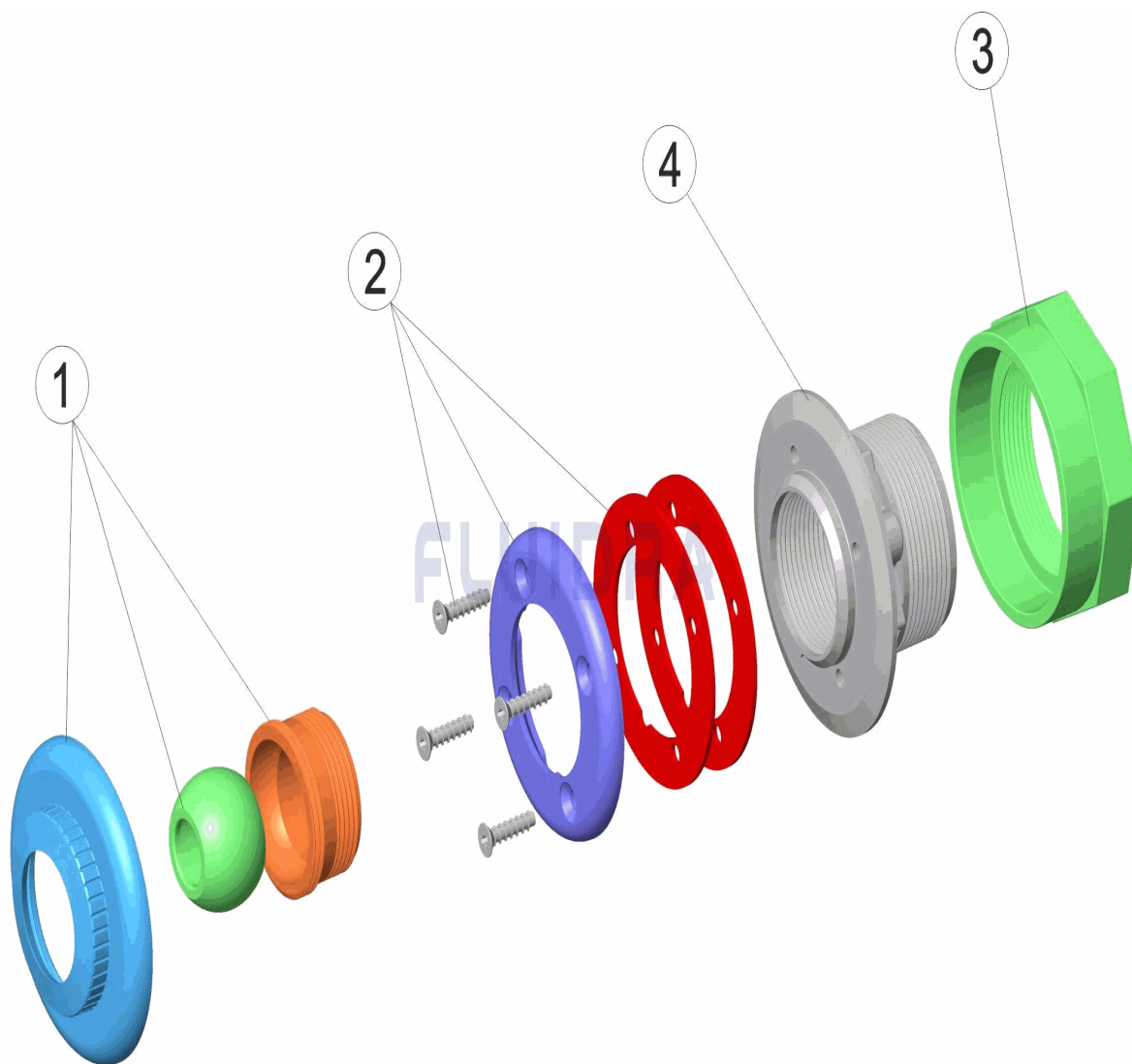
BESCHREIBUNG: **EINLAUFDÜSE FERTIGBECKEN FOLIE KLEBEN UND SCHRAUBEN**

**HINWEISE**

POS	CODE	HINWEISE
4	* 25496R0001	FÜR: 32450
4	* 31412R0001	FÜR: 32451

CODIGO **32450, 32451**

DESCRIÇÃO: **BOQUILHA IMPULSÃO PIS. PRÉ-F, LINER UNIR E ENROSCAR**



**PORTUGUES**

POS	CODIGO	DESCRIÇÃO	JANTIDADE	POS	CODIGO	DESCRIÇÃO	JANTIDADE
1	4402044803	BOLA MULTIFLOW COMPLETA 3/4"	4	*	25496R0001	CORPO PEÇA DE LIGAÇÃO LINER ROSCA F	
2	4402044802	ARO E JUNTA PISCINA PRE-FABRICADA	4	*	31412R0001	PEÇA BOCAL 100X42,5/LINER/INT. COLÁVE	
3	4402045403	PORÇA HEXAGONAL 2" BS "					

**CODIGO 32450, 32451**

**DESCRIÇÃO: BOQUILHA IMPULSÃO PIS. PRÉ-F, LINER UNIR E ENROSCAR**

**OBSERVAÇÕES**

POS	CODIGO	OBSERVAÇÕES
4	* 25496R0001	PARA: 32450
4	* 31412R0001	PARA: 32451