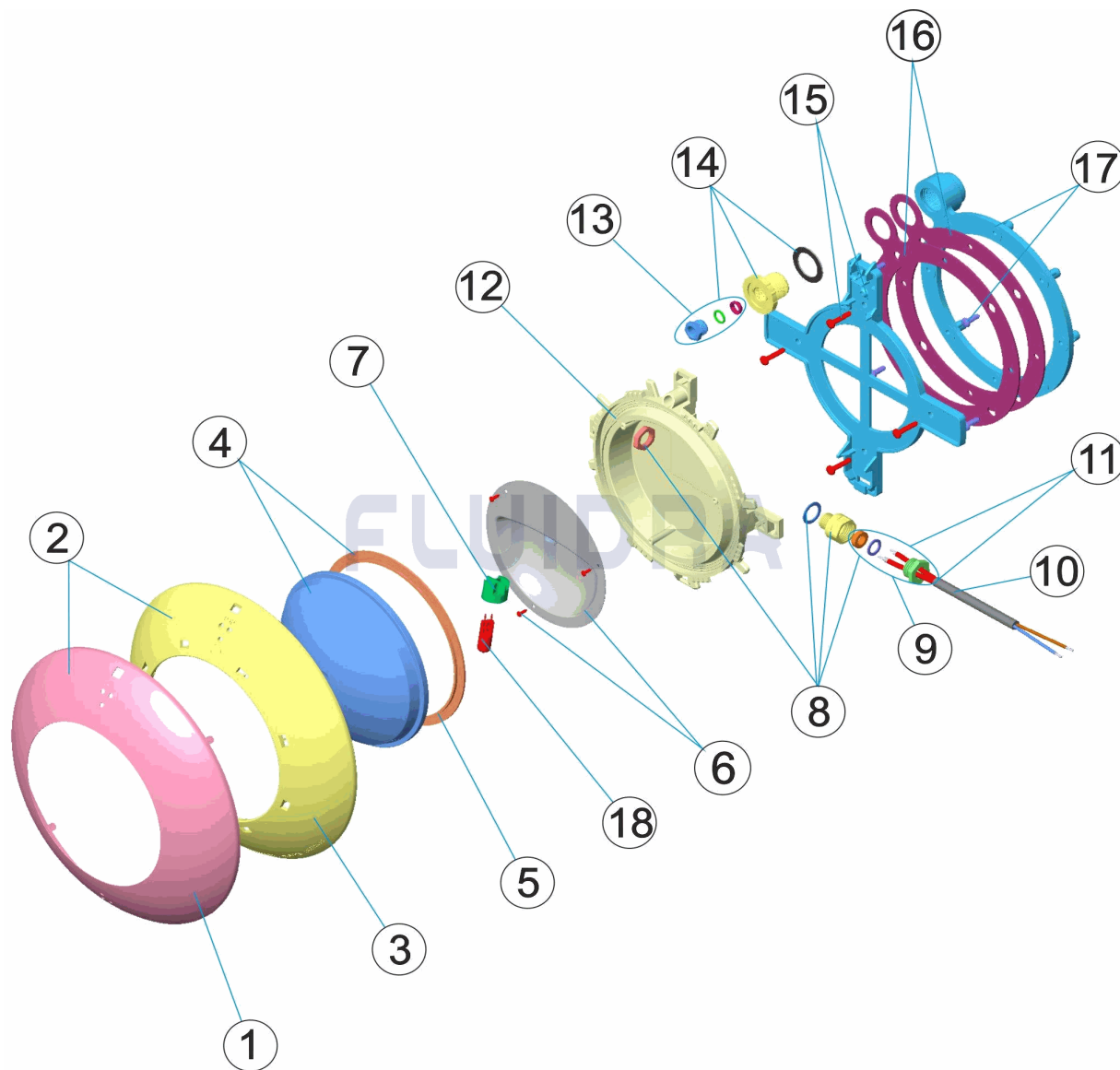


CODIGO **24765, 35668**

DESCRIPCION: **PROY. EXTRA PLANO P. PREF. ARO BLANCO/INOX LINER**



**ESPAÑOL**

POS	CODIGO	DESCRIPCION	CANTIDAD	POS	CODIGO	DESCRIPCION	CANTIDAD
1	* 4403012304	EMBELLECEDOR INOX PROYECTOR EXTR		10	4403011905	CABLE PROYECTOR	
2	* 4403012301	CJTO.EMBELLECED.INOX PROJEC.EXTRA		11	4403015405	CABLE PROYECTOR, PRENSAESTOPAS	
3	* 4403011901	EMBELLECEDOR PROYECTOR PLANO		12	4403011908	CUERPO PROYECTOR	
4	4403012303	LENTE TRANSPARENTE + JUNTA		13	4403011405	PRENSAESTOPAS PROYECTOR DICROICO	
5	4403010102	JUNTA SILICONA PROYECTOR		14	4403015702	CJTO. PRENSAESTOPAS	
6	4403011903	REFLECTOR PORTALAMPARAS		15	4403013801	SOPORTE PROYECTOR	
7	4403011407	PORTALAMPARAS		16	4403015704	JUNTA ADHESIVA PROYECTOR PLANO	
8	4403012302	CJTO. PRENSAESTOPAS M-16 KT 19,5X2		17	4403013802	BRIDA FIJACION PROYECTOR	
9	4403010076	CJTO. TAPON PRENSAESTOPAS		18	00371	LAMPARA HALOGENA 12 V. 100 W.	

CODIGO                    **24765, 35668**

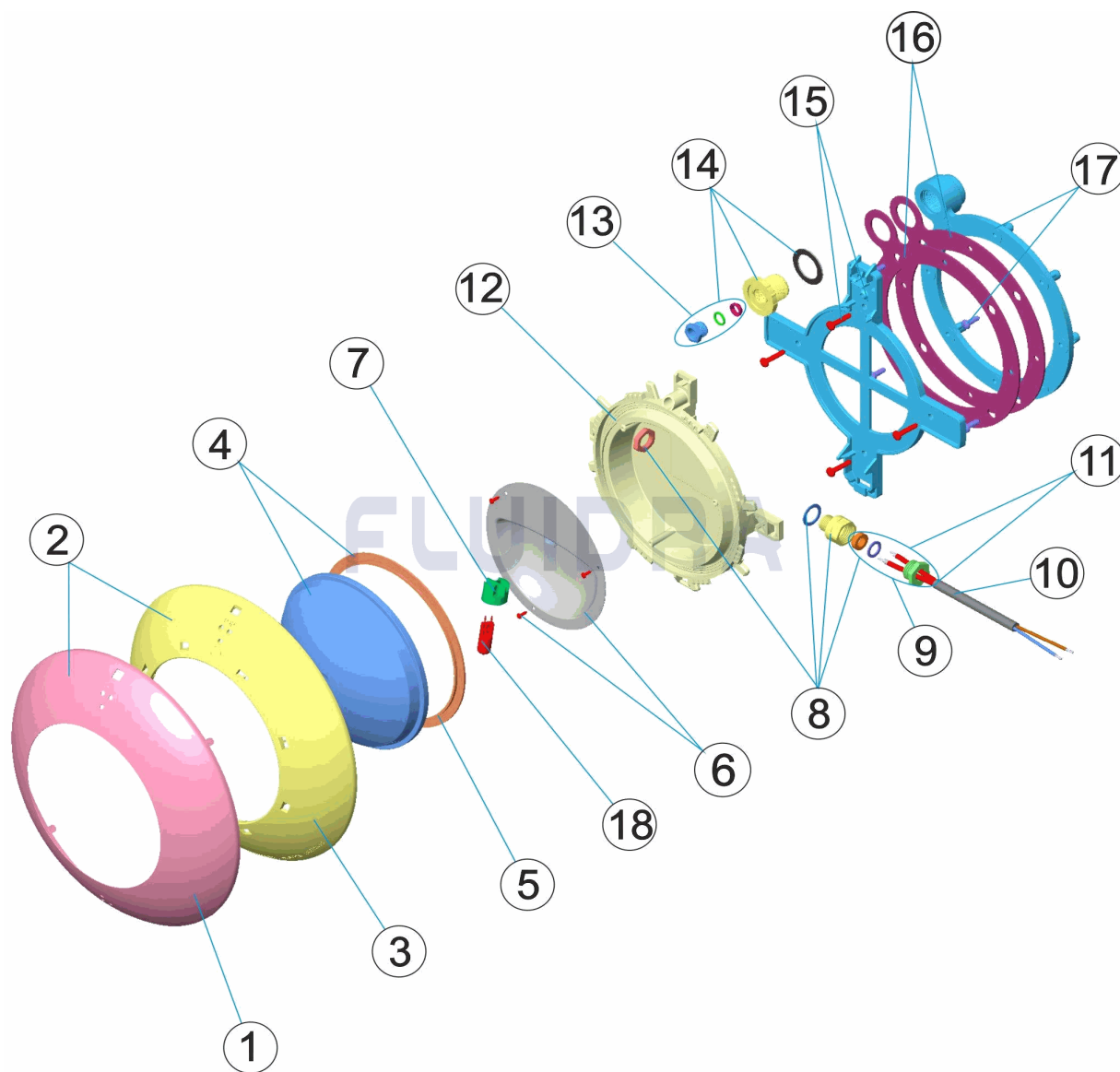
DESCRIPCION: **PROY. EXTRA PLANO P. PREF. ARO BLANCO/INOX LINER**

## OBSERVACIONES

POS	CODIGO	OBSERVACIONES
1	* 4403012304	PARA: 35668
2	* 4403012301	PARA: 35668
3	* 4403011901	PARA: 24765

CODE 24765, 35668

DESCRIPTION: PROJ. EXTRA PLAT P. PRÉF. CERCLE BLANC/INOX LINER



FRANCAIS

POS	CODE	DESCRIPTION	QUANTITE	POS	CODE	DESCRIPTION	QUANTITE
1	* 4403012304	ANNEAU ENJOLIVER INOX		10	4403011905	CABLE DE PROJECTEUR	
2	* 4403012301	ENSEMBLE ANNEAU ENJOLIVER INOX		11	4403015405	CABLE PROJECTEUR PRESSE ÉTOUPE	
3	* 4403011901	ENJOLIVEUR PROJECTEUR PLAT		12	4403011908	CORPS DU PROJECTEUR	
4	4403012303	LENTE PROJECTEUR + JOINT		13	4403011405	PRESSE-ÉTOUPE ET JOINT PROJ. DICHRO	
5	4403010102	JOINT SILICONE PROJECTEUR		14	4403015702	ENS. PRESSE ETOUPE	
6	4403011903	REFLECTEUR PORTE LAMPE		15	4403013801	SUPPORT PROJECTEUR	
7	4403011407	PORTE-LAMPE		16	4403015704	JOINT ADHESIF PROJECTEUR PLAT	
8	4403012302	ENSEMBLE PRESSE ÉTOUPE M-16 KT 19,€		17	4403013802	BRIDE FIXATION PROJECTEUR	
9	4403010076	ENSEMBLE BOUCHON PRESSE-ETOUPE		18	00371	LAMPE 12 V. 100 W.	

CODE **24765, 35668**

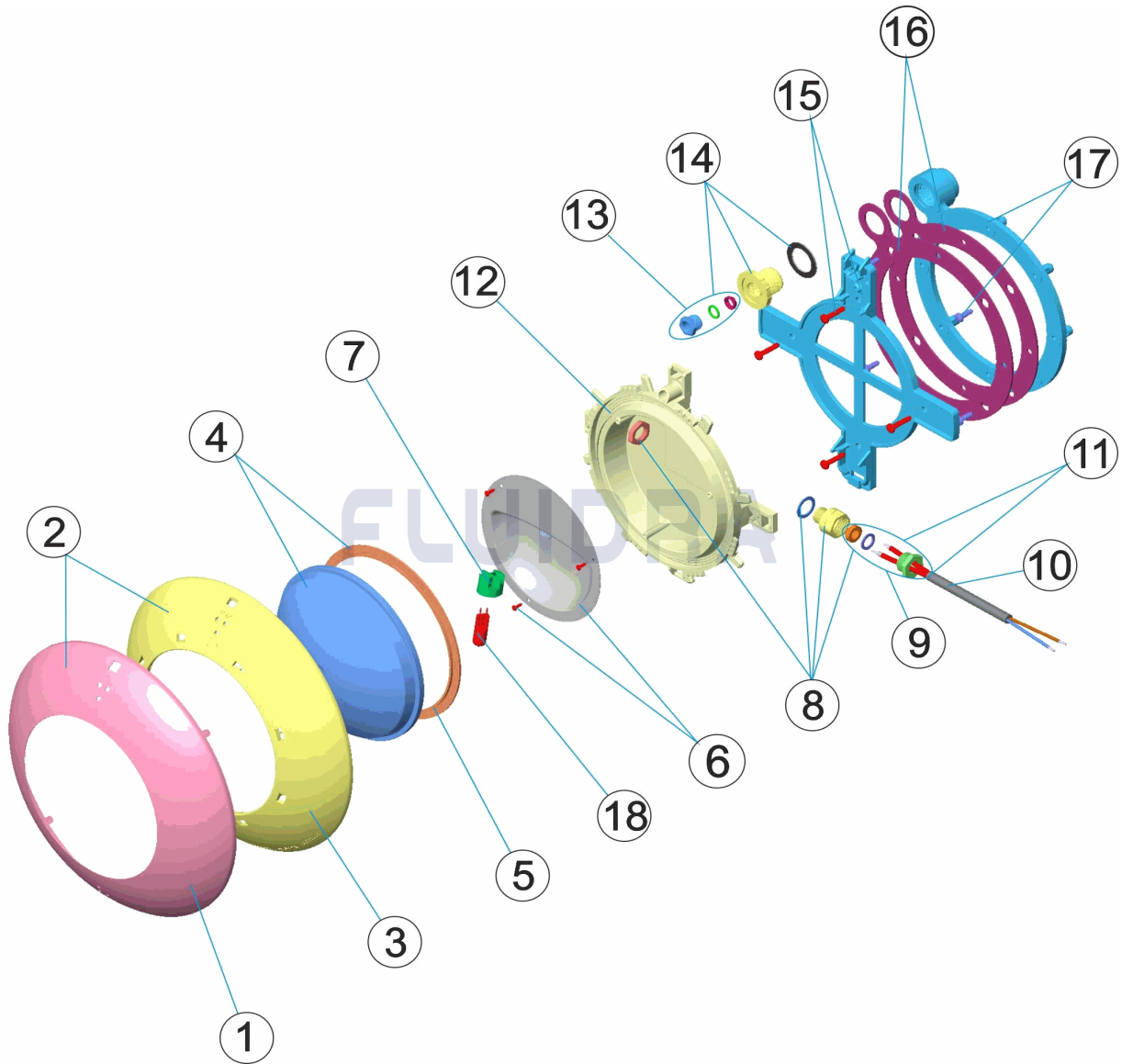
DESCRIPTION: **PROJ. EXTRA PLAT P. PRÉF. CERCLE BLANC/INOX LINER**

**OBSERVATIONS**

POS	CODE	OBSERVATIONS
1	* 4403012304	POUR: 35668
2	* 4403012301	POUR: 35668
3	* 4403011901	POUR: 24765

CODE **24765, 35668**

DESCRIPTION: **EXTRA-FLAT LIGHT PREFAB POOL WHITE RING / STAINLESS STEEL LINE**



**ENGLISH**

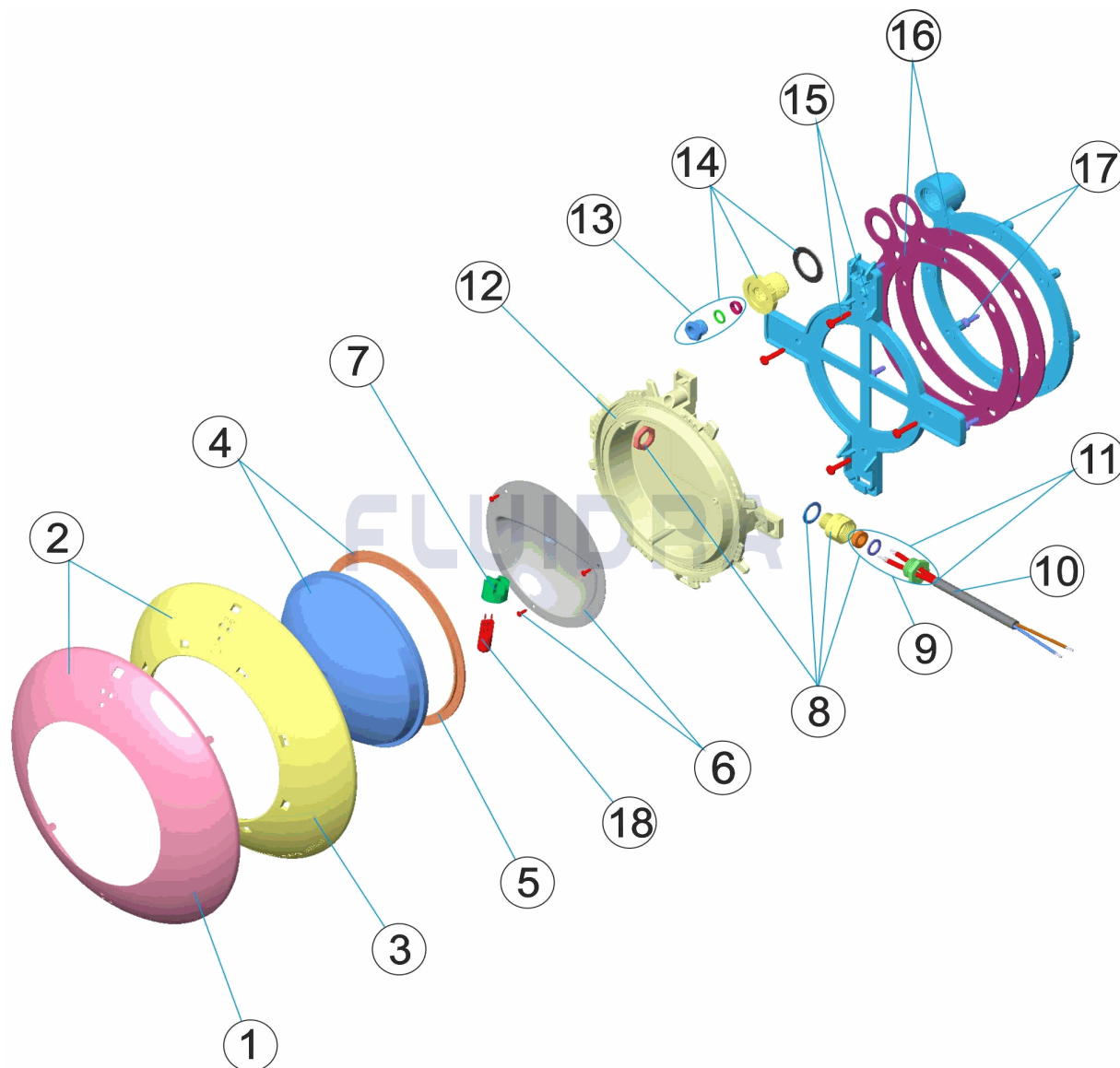
POS	CODE	DESCRIPTION	QUANTITY	POS	CODE	DESCRIPTION	QUANTITY
1	* 4403012304	RUSTPROOF DECORATIVE RING		10	4403011905	LIGHT CABLE	
2	* 4403012301	SET RUSTPROOF DECORATIVE RING		11	4403015405	PROJECTOR CABLE, PACKING GLANDS PR	
3	* 4403011901	FLAT LIGHT FACEPLATE		12	4403011908	LIGHT BODY	
4	4403012303	CLEAR LENS + GASKET		13	4403011405	PACKING GLAND	
5	4403010102	LIGHT SILICON GASKET		14	4403015702	GLAND SEAL ASSY.	
6	4403011903	LAMPHOLDER REFLECTOR PLATE		15	4403013801	LIGHT SUPPORT	
7	4403011407	LAMP HOLDER		16	4403015704	ADHESIVE GASKET FLAT PROJECTOR	
8	4403012302	GLAND SEAL M-16 KT 19,5X2		17	4403013802	LIGHT FIXING FLANGE	
9	4403010076	PACKING GLAND ASSEMBLY		18	00371	LIGHTBULB 12 V. 100 W.	

CODE **24765, 35668**DESCRIPTION: **EXTRA-FLAT LIGHT PREFAB POOL WHITE RING / STAINLESS STEEL LINE****OBSERVATIONS**

POS	CODE	OBSERVATIONS
1	* 4403012304	FOR: 35668
2	* 4403012301	FOR: 35668
3	* 4403011901	FOR: 24765

CODICE 24765, 35668

DESCRIZIONE: PROIETTORE EXTRA PIANO PISC. PREF. ANELLO BIANCO/INOX LINER



ITALIANO

POS	CODICE	DESCRIZIONE	QUANTITA'	POS	CODICE	DESCRIZIONE	QUANTITA'
1	* 4403012304	ANELLO ORNAMENTALE INOSSID.		10	4403011905	CAVO FARO	
2	* 4403012301	KIT ANELLO ORNAMENTALE INOSSID.		11	4403015405	CAVO FARO, PRESSACAVO	
3	* 4403011901	ANELLO FRONTALE FARO PIATTO		12	4403011908	CORPO FARO	
4	4403012303	LENTE PROIETTORE + GUERNIZIONE		13	4403011405	PRESSACAVI FARO DICROICO	
5	4403010102	GUARNIZIONE SILICONE FARO		14	4403015702	KIT PRESSACAVI	
6	4403011903	RIFLETTORE PORTALAMPADE		15	4403013801	SUPPORTO FARO	
7	4403011407	PORTALAMPADE		16	4403015704	GUARNIZIONE ADESIVA FARO PIATTO	
8	4403012302	KIT PRESSACAVO M-16 KT 19,5X2		17	4403013802	FLANGIA FISSAGGIO FARO	
9	4403010076	INSIEME TAPPO PREMISTOPPA		18	00371	LAMPADINA 12 V. 100 W.	

**CODICE 24765, 35668**

**DESCRIZIONE: PROIETTORE EXTRA PIANO PISC. PREF. ANELLO BIANCO/INOX LINER**

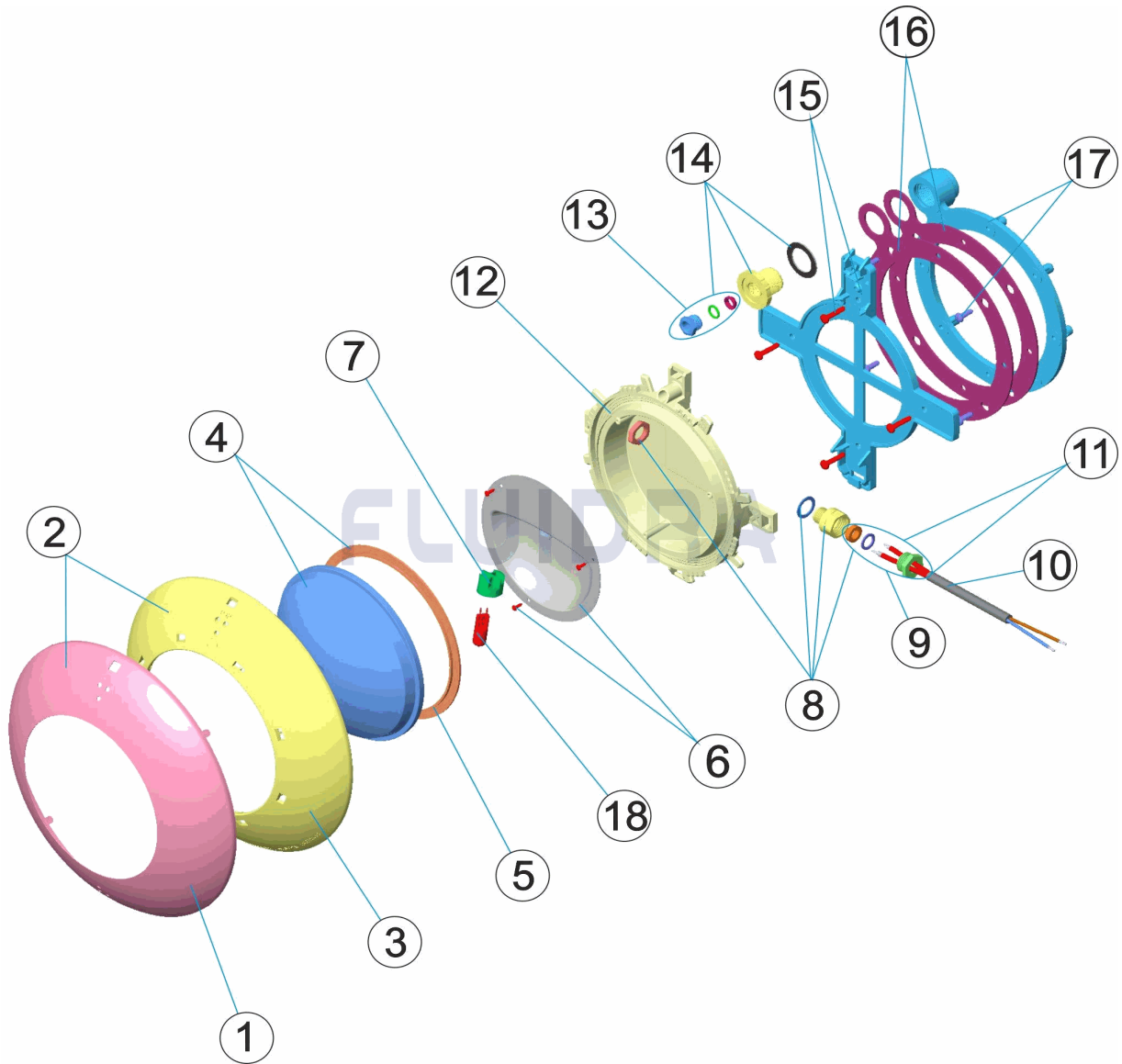
**OSSERVAZIONI**

POS	CODICE	OSSERVAZIONI
1	* 4403012304	PER: 35668
2	* 4403012301	PER: 35668
3	* 4403011901	PER: 24765



CODE **24765, 35668**

BESCHREIBUNG: **UWS EXTRA FLACH FERTIGBECKEN RING WEISS/EDELSTAHL FOLIE**



**DEUTSCH**

POS	CODE	BESCHREIBUNG	MENGE	POS	CODE	BESCHREIBUNG	MENGE
1	* 4403012304	BLLENDE EDELSTAHL UWS EXTRA FLACH		10	4403011905	UWS-KABEL	
2	* 4403012301	SET BLENDE EDELSTAHL UWS EXTRA FLA		11	4403015405	UWS-KABEL, QUETSCHVERSCHRAUBUNG	
3	* 4403011901	BLLENDE UWS FLACH		12	4403011908	GEHÄUSE UWS	
4	4403012303	LINSE TRANSPARENT UND DICHUNG		13	4403011405	QUETSCHVERSCHRAUBUNG UWS KALT LIC	
5	4403010102	DICHUNG SILIKON UWS		14	4403015702	SET QUETSCHVERSCHRAUBUNG	
6	4403011903	REFLEKTOR LAMPENFASSUNG		15	4403013801	HALTERUNG UWS	
7	4403011407	LAMPENFASSUNG		16	4403015704	DICHUNG SELBSTKLEBEND UWS FLACH	
8	4403012302	SET QUETSCHVERSCHRAUBUNG M-16 KT		17	4403013802	BEFESTIGUNGSFLANSCH UWS	
9	4403010076	STOPFENSET QUETSCHVERSCHRAUBUN		18	00371	LAMPE HALOGEN 12 V 100 W	

CODE **24765, 35668**

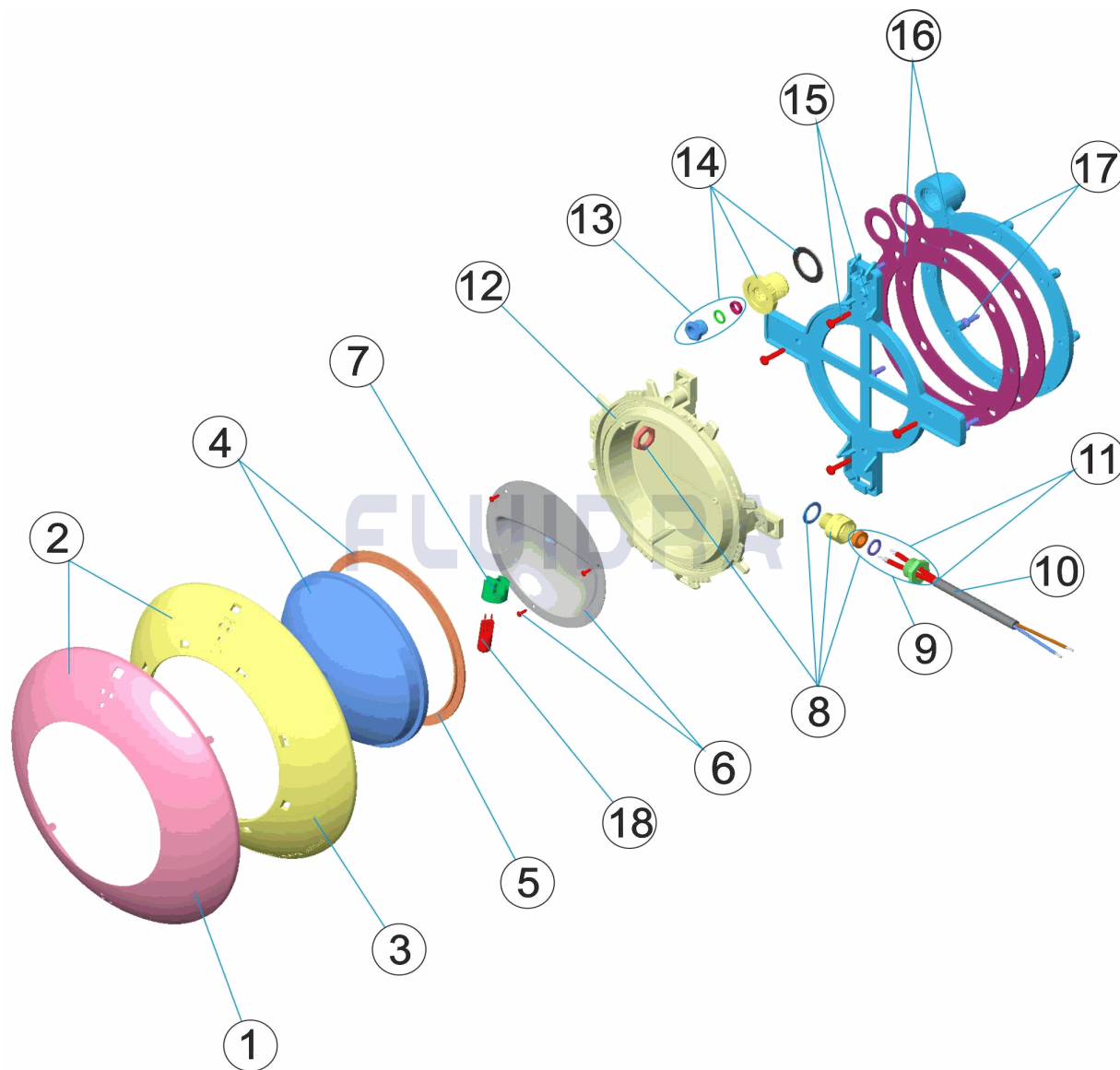
BESCHREIBUNG: **UWS EXTRA FLACH FERTIGBECKEN RING WEISS/EDELSTAHL FOLIE**

**HINWEISE**

POS	CODE	HINWEISE
1	* 4403012304	FÜR: 35668
2	* 4403012301	FÜR: 35668
3	* 4403011901	FÜR: 24765

CODIGO **24765, 35668**

DESCRIÇÃO: PROJ. EXTRA PLANO P. PRÉ-F. ARO BRANCO/INOX LINER



**PORTUGUES**

POS	CODIGO	DESCRIÇÃO	JANTIDADE	POS	CODIGO	DESCRIÇÃO	JANTIDADE
1	* 4403012304	ANEL DECORATIVO INOXIDABLE		10	4403011905	CABO PROJECTOR	
2	* 4403012301	CJTO. ANEL DECORATIVO INOXIDABLE		11	4403015405	CABO P'ROJECTOR BUCIM PROJECTOR	
3	* 4403011901	EMBELEZADOR PROJECTOR PLANO		12	4403011908	CORPO PROJECTOR	
4	4403012303	LENTE TRANSPARENTE + JUNTA		13	4403011405	BUCIM PROJECTOR	
5	4403010102	JUNTA SILICONE PROTECTOR		14	4403015702	CONJ.CAIXA DE VEDAÇÃO	
6	4403011903	REFLECTOR PORTA-LÂMPADAS		15	4403013801	SUPORTE PROJECTOR	
7	4403011407	PORTA-LÂMPADA		16	4403015704	JUNTA ADESIVA PROJECTOR EXTRA PLANI	
8	4403012302	CONJUNTO BUCIM M-16 KT 19,5X2		17	4403013802	FLANGE FIXAÇÃO PROJECTOR	
9	4403010076	CONJUNTO TAMPABUCIM		18	00371	BOMBILHA 12 V. 100 W.	

**CODIGO 24765, 35668**

**DESCRIÇÃO: PROJ. EXTRA PLANO P. PRÉ-F. ARO BRANCO/INOX LINER**

**OBSERVAÇÕES**

POS	CODIGO	OBSERVAÇÕES
1	* 4403012304	PARA: 35668
2	* 4403012301	PARA: 35668
3	* 4403011901	PARA: 24765