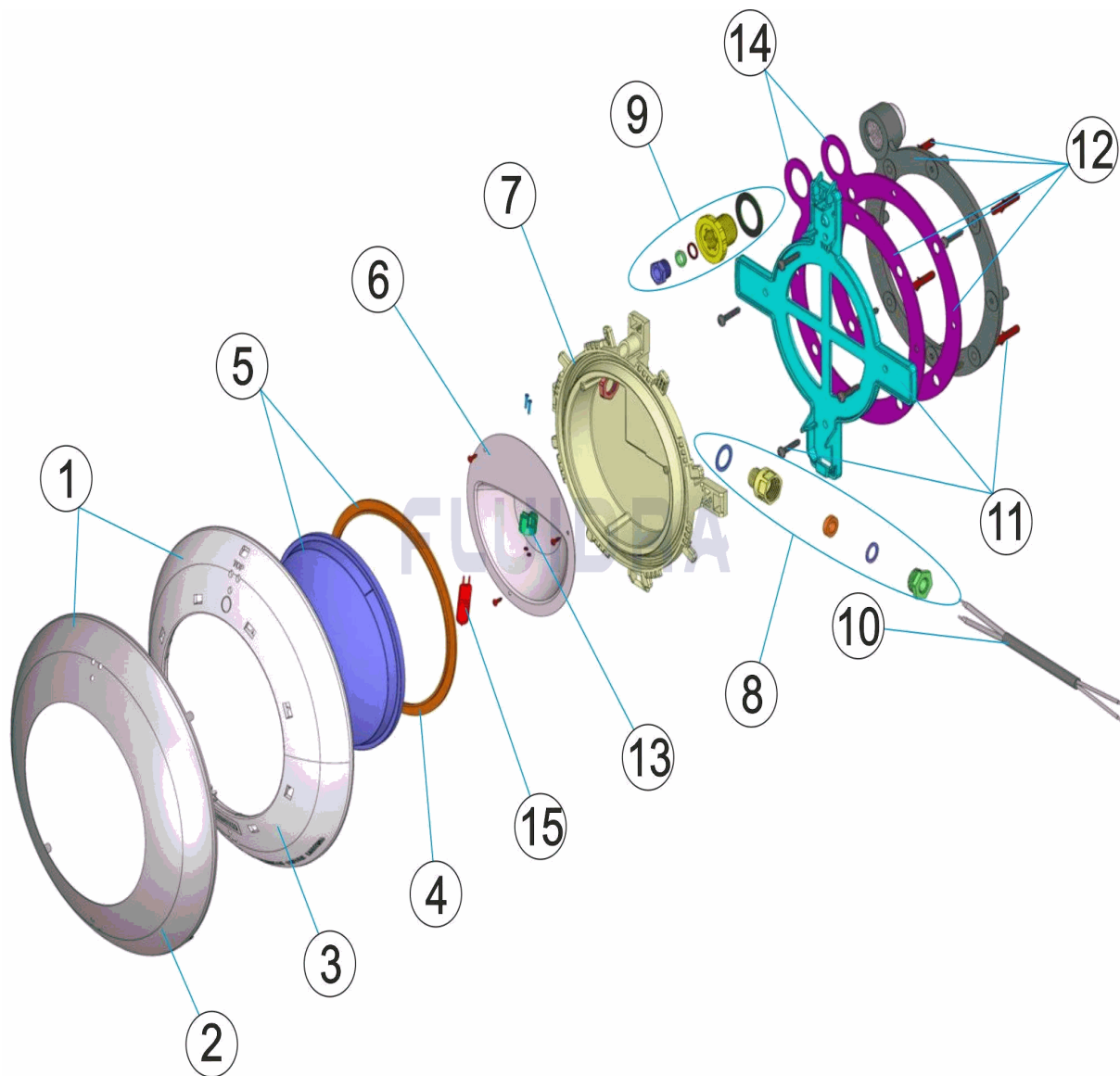


CODIGO **43452, 43454**

DESCRIPCION: **PROY. EXTRA PLANOP. LINER HORM. EMB. BLANCO/INOX**



ESPAÑOL

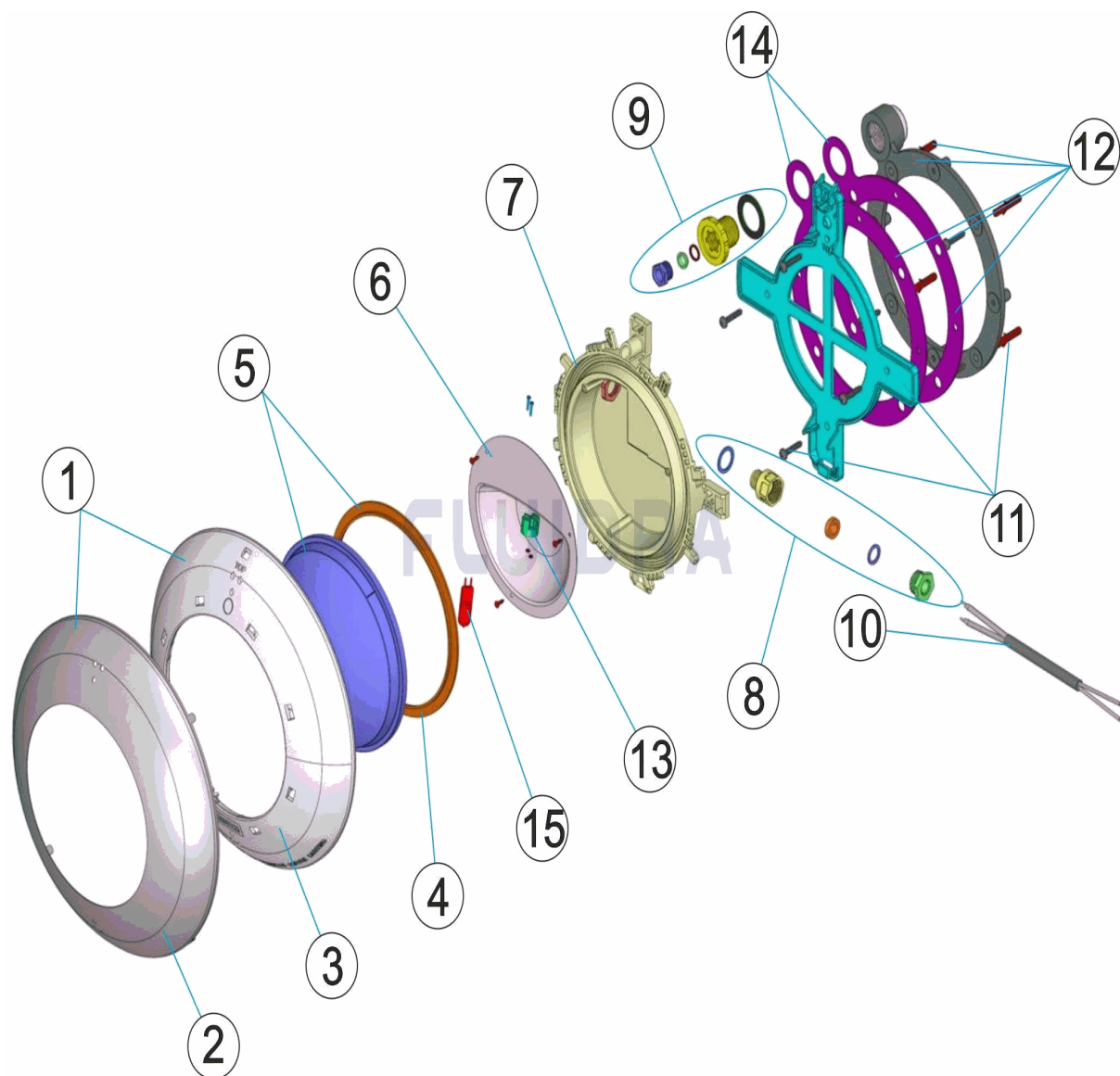
POS	CODIGO	DESCRIPCION	CANTIDAD	POS	CODIGO	DESCRIPCION	CANTIDAD
1	* 4403012301	CJTO.EMBELLED.CED.INOX PROJEC.EXTRA		9	4403015702	CJTO. PRENSAESTOPAS	
2	* 4403012304	EMBELLED.CEDOR INOX PROYECTOR EXTR		10	4403011905	CABLE PROYECTOR	
3	* 4403011901	EMBELLED.CEDOR PROYECTOR PLANO		11	4403011906	SOPORTE PROYECTOR	
4	4403010102	JUNTA SILICONA PROYECTOR		12	4403015703	CJTO. FIJACION PROYECTOR EXTRA PLAN	
5	4403012303	LENTE TRANSPARENTE + JUNTA		13	4403011407	PORTALAMPARAS	
6	4403011903	REFLECTOR PORTALAMPARAS		14	4403015704	JUNTA ADHESIVA PROYECTOR PLANO	
7	4403011908	CUERPO PROYECTOR		15	00371	LAMPARA HALOGENA 12 V. 100 W.	
8	4403011904	PRENSAESTOPAS M-16					

CODIGO **43452, 43454**DESCRIPCION: **PROY. EXTRA PLANOP. LINER HORM. EMB. BLANCO/INOX****OBSERVACIONES**

POS	CODIGO	OBSERVACIONES
1	* 4403012301	PARA: 43454
2	* 4403012304	PARA: 43454
3	* 4403011901	PARA: 43452

CODE 43452, 43454

DESCRIPTION: PROJ. EXTRA PLAT P. LINER BÉTON ENJ. BLANC/INOX



FRANCAIS

POS	CODE	DESCRIPTION	QUANTITE	POS	CODE	DESCRIPTION	QUANTITE
1	* 4403012301	ENSEMBLE ANNEAU ENJOLIVER INOX		9	4403015702	ENS. PRESSE ETOUPE	
2	* 4403012304	ANNEAU ENJOLIVER INOX		10	4403011905	CABLE DE PROJECTEUR	
3	* 4403011901	ENJOLIVEUR PROJECTEUR PLAT		11	4403011906	SUPPORT PROJECTEUR	
4	4403010102	JOINT SILICONE PROJECTEUR		12	4403015703	ENS. FIXATION PROJECTEUR EXTRA PLAT	
5	4403012303	LENTE PROJECTEUR + JOINT		13	4403011407	PORTE-LAMPE	
6	4403011903	REFLECTEUR PORTE LAMPE		14	4403015704	JOINT ADHESIF PROJECTEUR PLAT	
7	4403011908	CORPS DU PROJECTEUR		15	00371	LAMPE 12 V. 100 W.	
8	4403011904	PRESSE ETOUPE M16					

CODE **43452, 43454**

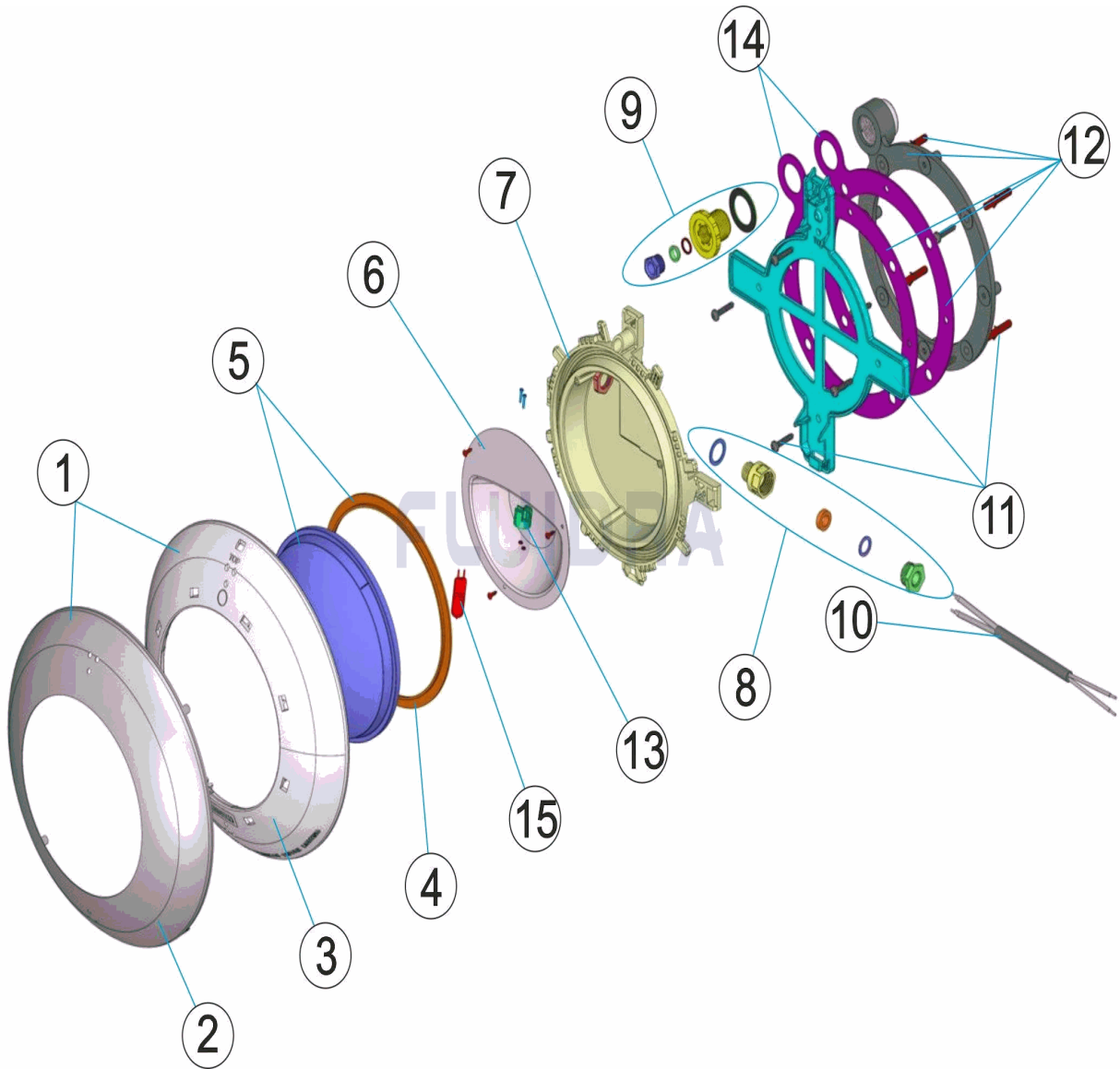
DESCRIPTION: **PROJ. EXTRA PLAT P. LINER BÉTON ENJ. BLANC/INOX**

OBSERVATIONS

POS	CODE	OBSERVATIONS
1	* 4403012301	POUR: 43454
2	* 4403012304	POUR: 43454
3	* 4403011901	POUR: 43452

CODE **43452, 43454**

DESCRIPTION: **EXTRA-FLAT LIGHT PREFAB LINER CONCRETE POOL DECORATIVE CASE**



ENGLISH

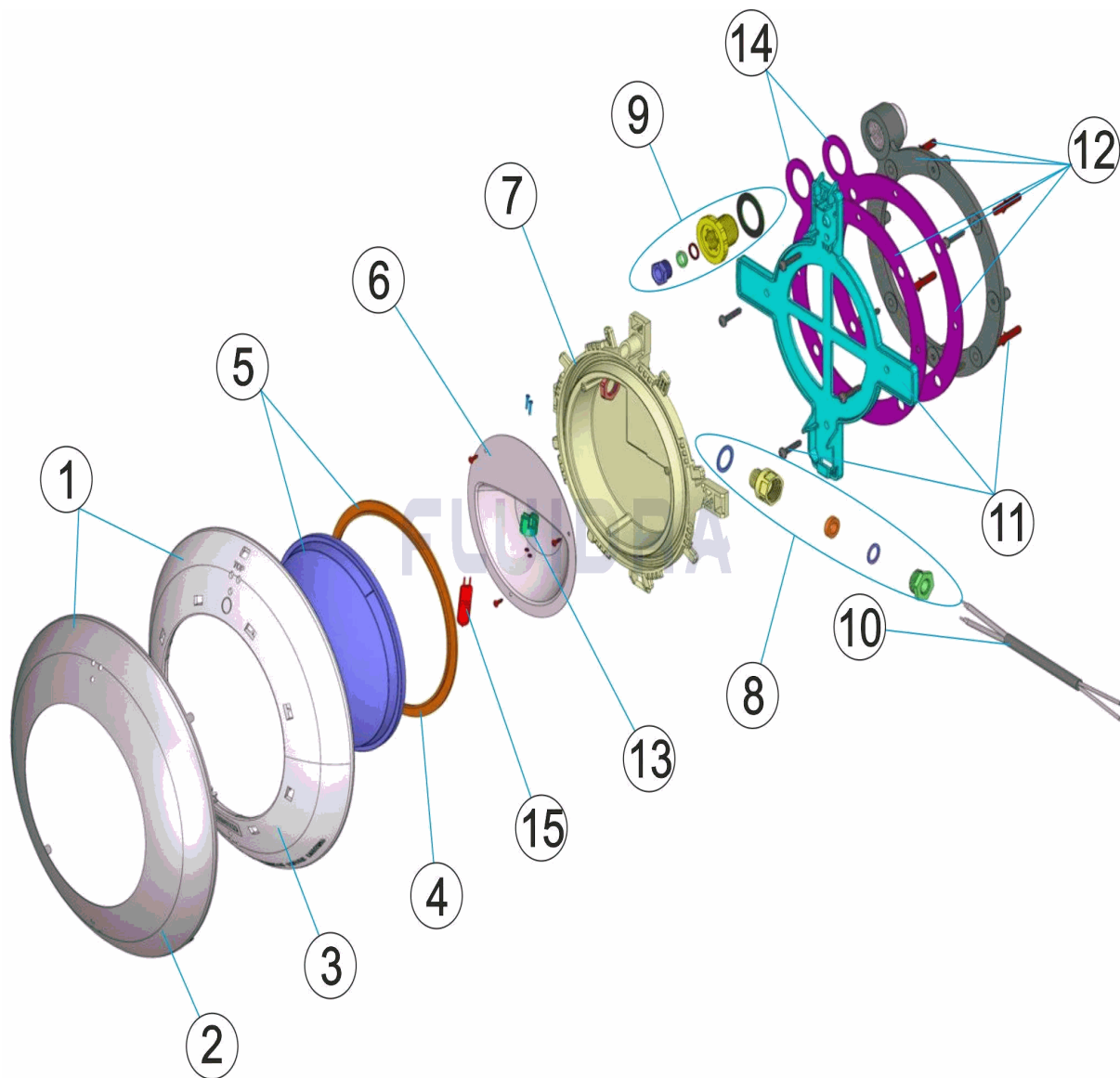
POS	CODE	DESCRIPTION	QUANTITY	POS	CODE	DESCRIPTION	QUANTITY
1	* 4403012301	SET RUSTPROOF DECORATIVE RING		9	4403015702	GLAND SEAL ASSY.	
2	* 4403012304	RUSTPROOF DECORATIVE RING		10	4403011905	LIGHT CABLE	
3	* 4403011901	FLAT LIGHT FACEPLATE		11	4403011906	LIGHT SUPPORT	
4	4403010102	LIGHT SILICON GASKET		12	4403015703	FIXING UNIT EXTRA FLAT PROJECTOR	
5	4403012303	CLEAR LENS + GASKET		13	4403011407	LAMP HOLDER	
6	4403011903	LAMPHOLDER REFLECTOR PLATE		14	4403015704	ADHESIVE GASKET FLAT PROJECTOR	
7	4403011908	LIGHT BODY		15	00371	LIGHTBULB 12 V. 100 W.	
8	4403011904	NUT M-16					

CODE **43452, 43454**DESCRIPTION: **EXTRA-FLAT LIGHT PREFAB LINER CONCRETE POOL DECORATIVE CASE****OBSERVATIONS**

POS	CODE	OBSERVATIONS
1	* 4403012301	FOR: 43454
2	* 4403012304	FOR: 43454
3	* 4403011901	FOR: 43452

CODICE 43452, 43454

DESCRIZIONE: PROIETTORE EXTRA PIANO LINER CEMENTO PLACCA BIANCO/INOX



ITALIANO

POS	CODICE	DESCRIZIONE	QUANTITA'	POS	CODICE	DESCRIZIONE	QUANTITA'
1	* 4403012301	KIT ANELLO ORNAMENTALE INOSSID.		9	4403015702	KIT PRESSACAVI	
2	* 4403012304	ANELLO ORNAMENTALE INOSSID.		10	4403011905	CAVO FARO	
3	* 4403011901	ANELLO FRONTALE FARO PIATTO		11	4403011906	SUPPORTO FARO	
4	4403010102	GUARNIZIONE SILICONE FARO		12	4403015703	KIT FISSAGGIO FARO EXTRA PIATTO	
5	4403012303	LENTE PROIETTORE + GUERNIZIONE		13	4403011407	PORTALAMPADE	
6	4403011903	RIFLETTORE PORTALAMPADE		14	4403015704	GUARNIZIONE ADESIVA FARO PIATTO	
7	4403011908	CORPO FARO		15	00371	LAMPADINA 12 V. 100 W.	
8	4403011904	PRESSACAVI M16					

CODICE **43452, 43454**

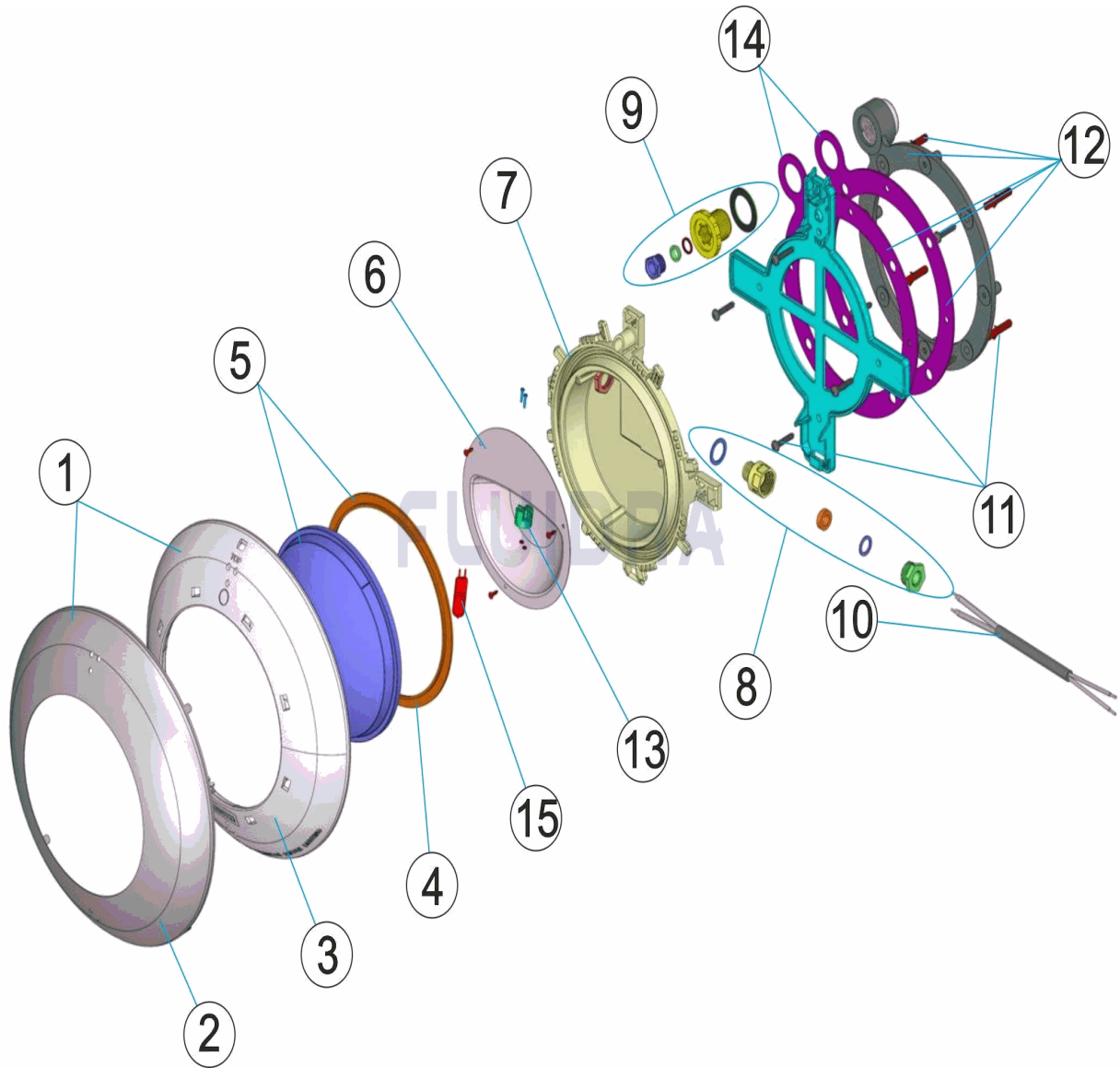
DESCRIZIONE: **PROIETTORE EXTRA PIANO LINER CEMENTO PLACCA BIANCO/INOX**

OSSERVAZIONI

POS	CODICE	OSSERVAZIONI
1	* 4403012301	PER: 43454
2	* 4403012304	PER: 43454
3	* 4403011901	PER: 43452

CODE **43452, 43454**

BESCHREIBUNG: **UWS EXTRA FLACH FOLIE BETON BLENDE WEISS/EDELSTAHL**



DEUTSCH

POS	CODE	BESCHREIBUNG	MENGE	POS	CODE	BESCHREIBUNG	MENGE
1	* 4403012301	SET BLENDE EDELSTAHL UWS EXTRA FLA		9	4403015702	SET QUETSCHVERSCHRAUBUNG	
2	* 4403012304	BLENDE EDELSTAHL UWS EXTRA FLACH		10	4403011905	UWS-KABEL	
3	* 4403011901	BLENDE UWS FLACH		11	4403011906	HALTERUNG UWS	
4	4403010102	DICHTUNG SILIKON UWS		12	4403015703	FIXIERSET UWS EXTRA FLACH	
5	4403012303	LINSE TRANSPARENT UND DICHTUNG		13	4403011407	LAMPENFASSUNG	
6	4403011903	REFLEKTOR LAMPENFASSUNG		14	4403015704	DICHTUNG SELBSTKLEBEND UWS FLACH	
7	4403011908	GEHÄUSE UWS		15	00371	LAMPE HALOGEN 12 V 100 W	
8	4403011904	QUETSCHVERSCHRAUBUNG M-16					

CODE **43452, 43454**

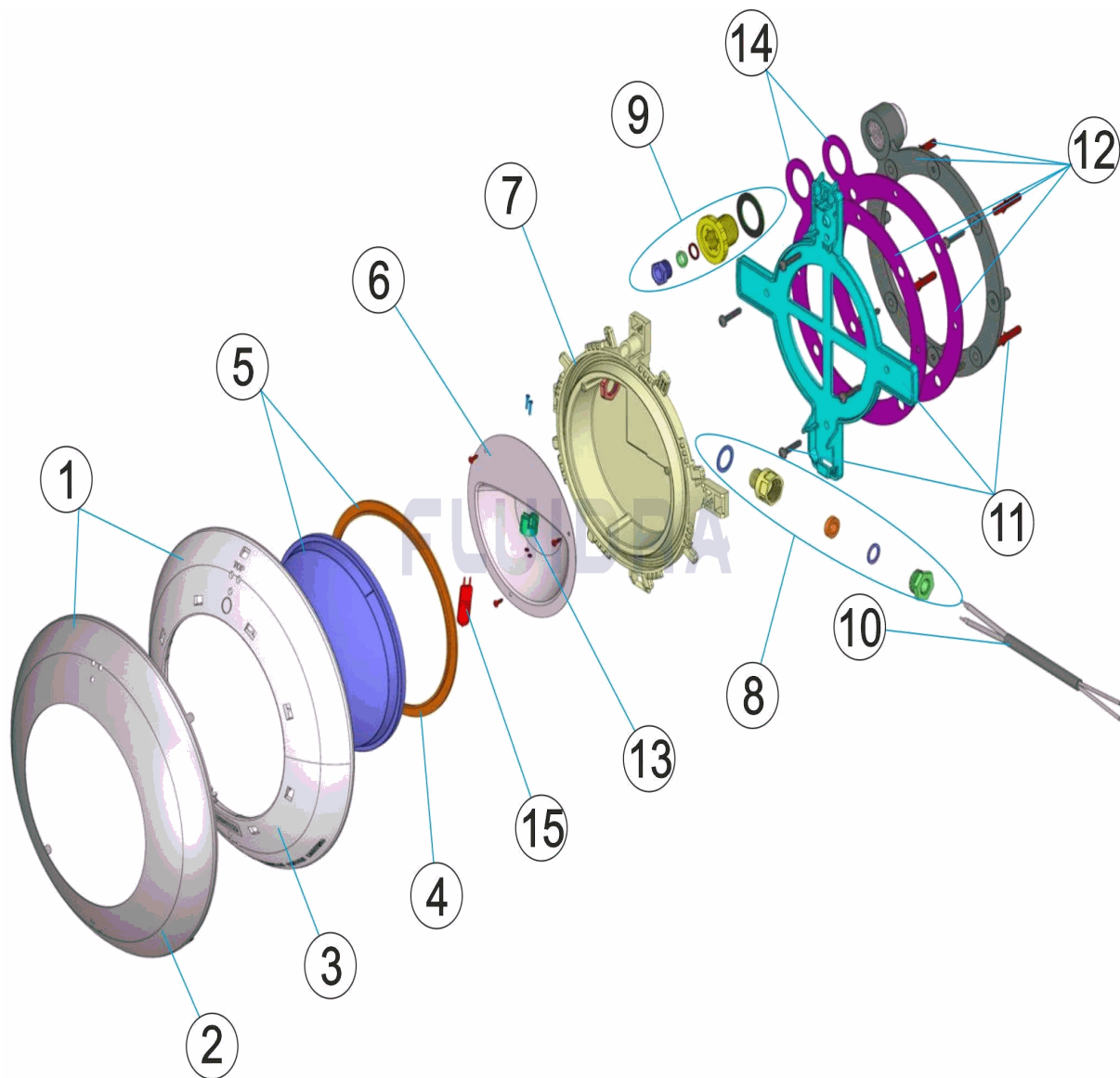
BESCHREIBUNG: **UWS EXTRA FLACH FOLIE BETON BLENDE WEISS/EDELSTAHL**

HINWEISE

POS	CODE	HINWEISE
1	* 4403012301	FÜR: 43454
2	* 4403012304	FÜR: 43454
3	* 4403011901	FÜR: 43452

CODIGO **43452, 43454**

DESCRIÇÃO: PROJ. EXTRA PLANO P. LINER BETÃO P. DEC. BRANCO/INOX



PORTUGUES

POS	CODIGO	DESCRIÇÃO	JANTIDADE	POS	CODIGO	DESCRIÇÃO	JANTIDADE
1	* 4403012301	CJTO. ANEL DECORATIVO INOXIDABLE		9	4403015702	CONJ.CAIXA DE VEDAÇÃO	
2	* 4403012304	ANEL DECORATIVO INOXIDABLE		10	4403011905	CABO PROJECTOR	
3	* 4403011901	EMBELEZEDOR PROJECTOR PLANO		11	4403011906	SUPORE PROJECTOR	
4	4403010102	JUNTA SILICONE PROTECTOR		12	4403015703	CONJ.FIXAÇÃO PROJECTOR EXTRA PLAN	
5	4403012303	LENTE TRANSPARENTE + JUNTA		13	4403011407	PORTA-LÂMPADA	
6	4403011903	REFLECTOR PORTA-LÂMPADAS		14	4403015704	JUNTA ADESIVA PROJECTOR EXTRA PLAN	
7	4403011908	CORPO PROJECTOR		15	00371	BOMBILHA 12 V. 100 W.	
8	4403011904	BUCIN M-16					

CODIGO **43452, 43454**

DESCRIÇÃO: PROJ. EXTRA PLANO P. LINER BETÃO P. DEC. BRANCO/INOX

OBSERVAÇÕES

POS	CODIGO	OBSERVAÇÕES
1	* 4403012301	PARA: 43454
2	* 4403012304	PARA: 43454
3	* 4403011901	PARA: 43452