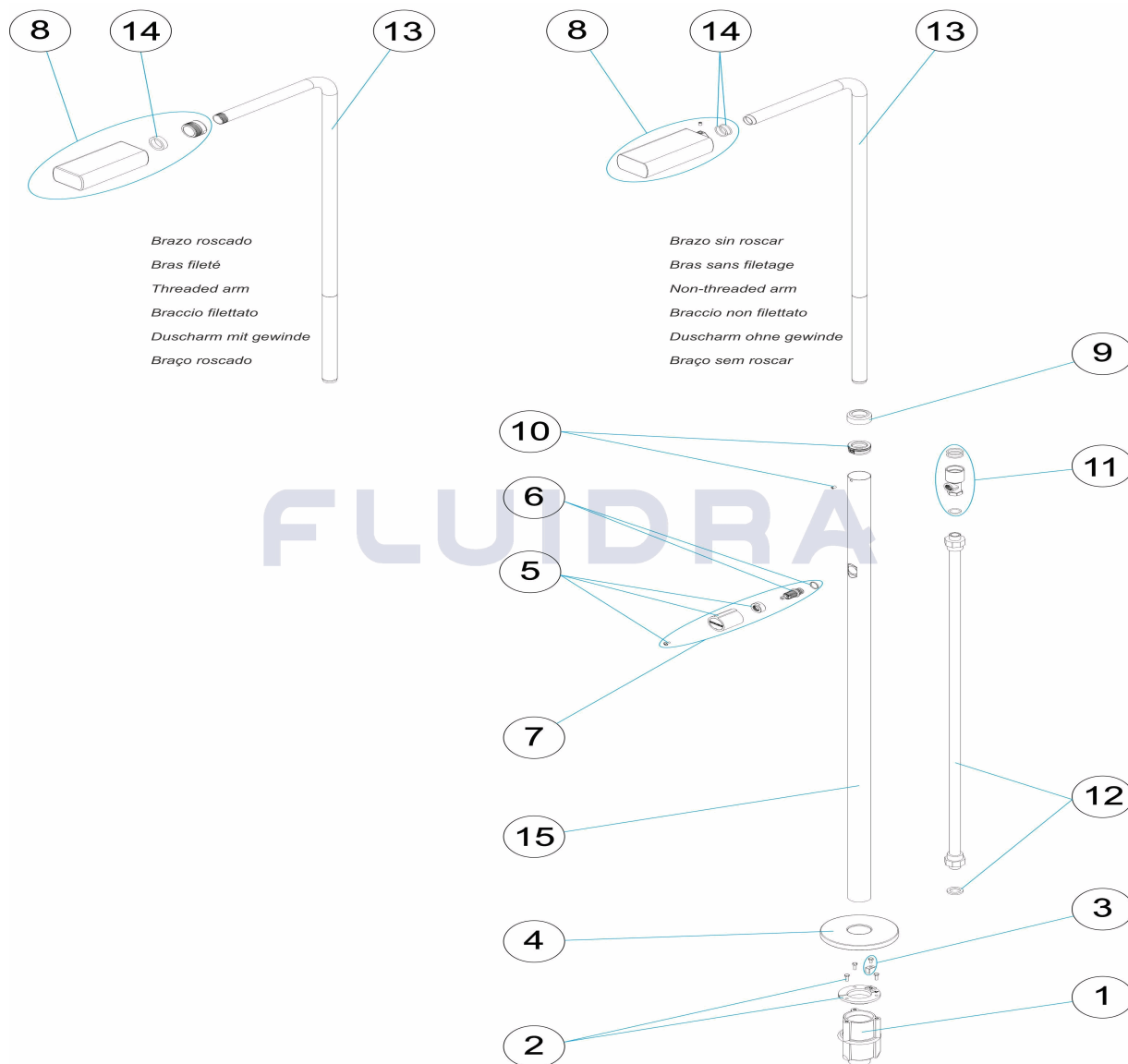


CODIGO **52717**

DESCRIPCION: **DUCHA ANGEL**



Brazo roscado
Bras fileté
Threaded arm
Braccio filettato
Duscharm mit gewinde
Braço roscado

Brazo sin roscar
Bras sans filetage
Non-threaded arm
Braccio non filettato
Duscharm ohne gewinde
Braço sem roscar

FLUIDRA

ESPAÑOL

POS	CODIGO	DESCRIPCION	CANTIDAD	POS	CODIGO	DESCRIPCION	CANTIDAD
1	4401040109	CUERPO ANCLAJE DUCHA		9	4401040106	TAPETA EMBELLECEDORA SUPERIOR 43	
2	4401040108	FIJACION ANCLAJE DUCHA 43		10	4401040022	ANILLO FIJACION	
3	4401040903	TOMA DE TIERRA		11	4401040023	CUERPO VALVULA	
4	4401040017	TAPETA INFERIOR DUCHA D. 43		12	4401040110	TUBO ½"	
5	4401040018	POMO CILINDRICO		13	* 4401040024	BRAZO DUCHA ROSCADO	
6	4401040019	EJE VALVULA		13	* 4401040267	BRAZO DUCHA	
7	4401040047	CJTO. POMO DUCHA		14	* 4401040021	JUNTA BRAZO D. 40	
8	* 4401040020	ROCIADOR RECTANGULAR ROSCADO		14	* 4401040266	JUEGO DE 2 JUNTAS TÓRICAS	
8	* 4401040226	ROCIADOR RECTANGULAR CON TORNILLI		15	52717R0009	TUBO EXTERIOR D. 43	

CODIGO **52717**

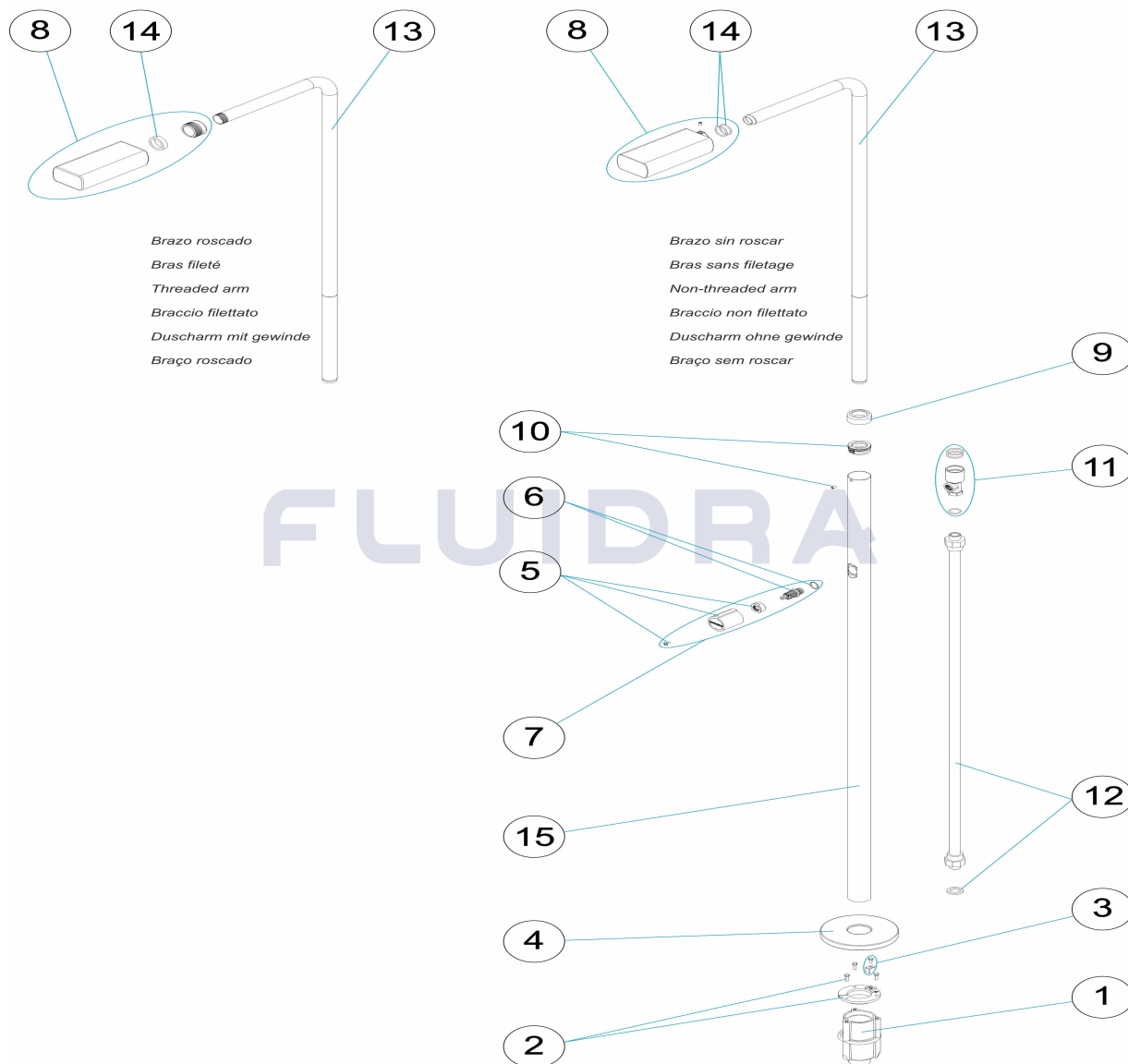
DESCRIPCION: **DUCHA ANGEL**

OBSERVACIONES

POS	CODIGO	OBSERVACIONES
8	* 4401040020	PARA: THREADED ARM
8	* 4401040226	PARA: NON-THREADED ARM
13	* 4401040024	PARA: THREADED ARM
13	* 4401040267	PARA: NON-THREADED ARM
14	* 4401040021	PARA: THREADED ARM
14	* 4401040266	PARA: NON-THREADED ARM

CODE 52717

DESCRIPTION: DOUCHE ANGEL



FRANCAIS

POS	CODE	DESCRIPTION	QUANTITE	POS	CODE	DESCRIPTION	QUANTITE
1	4401040109	CORPS D'ANCRAGE DE DOUCHE		9	4401040106	ENJOLIVEUR SUPERIEUR 43	
2	4401040108	1/2 ENCRAGE SUPERIEUR AVEC PRISE DE		10	4401040022	ANNEAU FIXATION	
3	4401040903	PRISE DE TERRE		11	4401040023	TE ROBINET DE DOUCHE	
4	4401040017	CACHE INFERIEUR DOUCHE D. 43		12	4401040110	TUBE 1/2'	
5	4401040018	POMMEAU CYLINDRIQUE		13	* 4401040024	BRAS DE DOUCHE FILETÉ	
6	4401040019	AXE VANNE		13	* 4401040267	BRAS DE DOUCHE	
7	4401040047	ENSEMBLE POMMEAU		14	* 4401040021	JOINT BRAS D. 40	
8	* 4401040020	JET RECTANGULAIRE FILETÉ		14	* 4401040266	SET DE 2 JOINTS TORIQUES	
8	* 4401040226	JET RECTANGULAIRE AVEC VIS SANS TÊT		15	52717R0009	TUBE EXTERIEUR D.43	

CODE **52717**

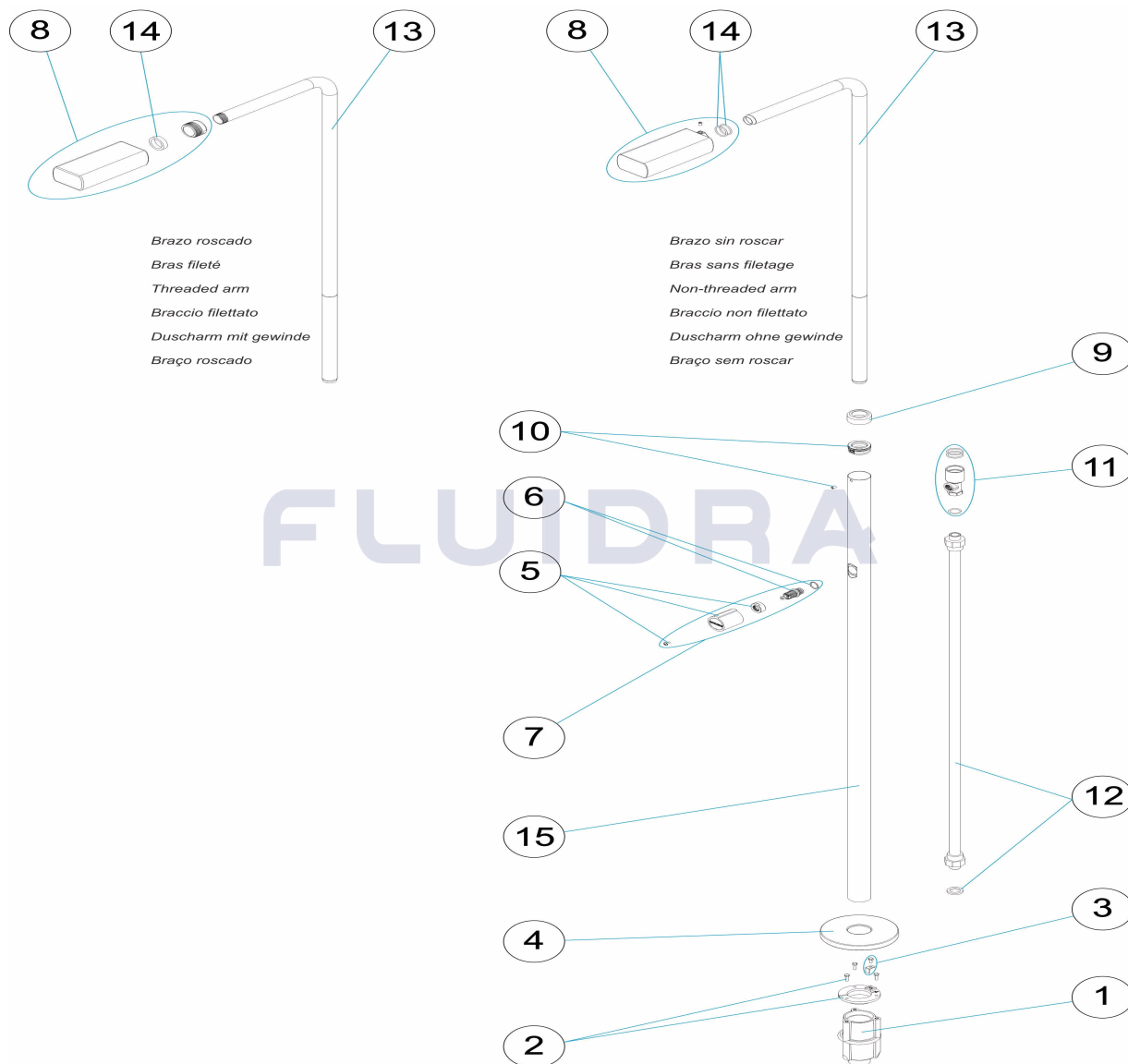
DESCRIPTION: **DOUCHE ANGEL**

OBSERVATIONS

POS	CODE	OBSERVATIONS
8	* 4401040020	POUR: THREADED ARM
8	* 4401040226	POUR: NON-THREADED ARM
13	* 4401040024	POUR: THREADED ARM
13	* 4401040267	POUR: NON-THREADED ARM
14	* 4401040021	POUR: THREADED ARM
14	* 4401040266	POUR: NON-THREADED ARM

CODE **52717**

DESCRIPTION: **ANGEL SHOWER**



Brazo roscado
Bras fileté
Threaded arm
Braccio filettato
Duscharm mit gewinde
Braço roscado

Brazo sin roscar
Bras sans filetage
Non-threaded arm
Braccio non filettato
Duscharm ohne gewinde
Braço sem roscar

ENGLISH

POS	CODE	DESCRIPTION	QUANTITY	POS	CODE	DESCRIPTION	QUANTITY
1	4401040109	SHOWER ANCHORING FIXTURE		9	4401040106	TOP ESCUTCHEON PLATE 43	
2	4401040108	SHOWER ANCHOR D 43		10	4401040022	SHOE RING	
3	4401040903	EARTH CONNECTION		11	4401040023	VALVE SOCKET	
4	4401040017	D. 43 LOWER SHOWER COVER		12	4401040110	1/2' PIPE	
5	4401040018	CYLINDRICAL KNOB		13	* 4401040024	THREADED SHOWER ARM	
6	4401040019	VALVE SHAFT		13	* 4401040267	SHOWER ARM	
7	4401040047	KNOB		14	* 4401040021	D. 40 ARM JOINT	
8	* 4401040020	THREADED RECTANGULAR NOZZLE		14	* 4401040266	SET OF 2 O-RINGS	
8	* 4401040226	RECTANGULAR NOZZLE WITH SET SCREW		15	52717R0009	TUBE EXTERNAL 43MM	

CODE **52717**

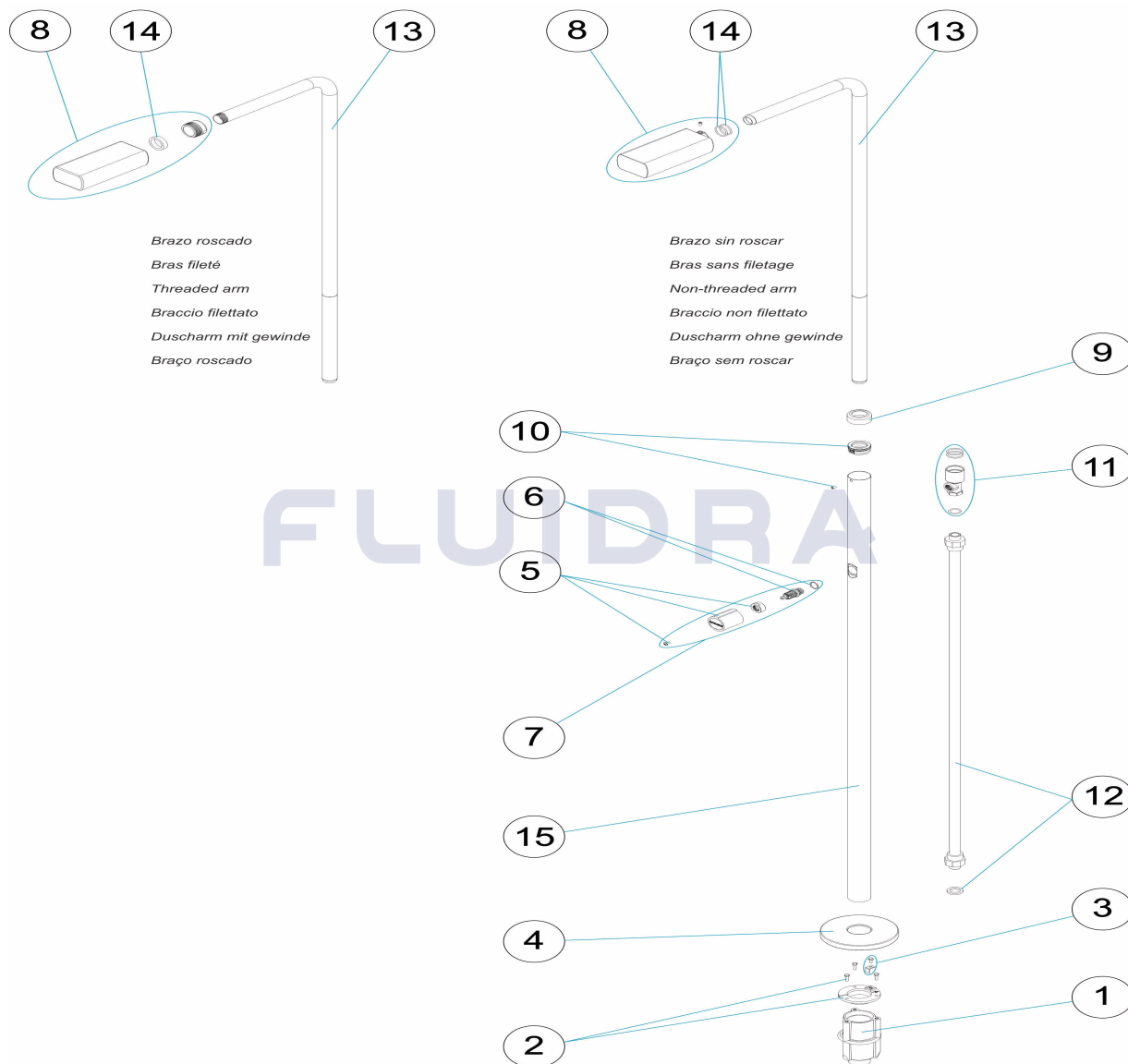
DESCRIPTION: **ANGEL SHOWER**

OBSERVATIONS

POS	CODE	OBSERVATIONS
8	* 4401040020	FOR: THREADED ARM
8	* 4401040226	FOR: NON-THREADED ARM
13	* 4401040024	FOR: THREADED ARM
13	* 4401040267	FOR: NON-THREADED ARM
14	* 4401040021	FOR: THREADED ARM
14	* 4401040266	FOR: NON-THREADED ARM

CODICE 52717

DESCRIZIONE: DOCCIA ANGEL



Braço roscado
Bras fileté
Threaded arm
Braccio filettato
Duscharm mit gewinde
Braço roscado

Braço sin roscar
Bras sans filetage
Non-threaded arm
Braccio non filettato
Duscharm ohne gewinde
Braço sem roscar

ITALIANO

POS	CODICE	DESCRIZIONE	QUANTITA'	POS	CODICE	DESCRIZIONE	QUANTITA'
1	4401040109	CORPO ANCORAGGIO DOCCIA		9	4401040106	COPRIFLANGIA 43	
2	4401040108	FISSAGGIO ANCORAGGIO DOCCIA D 43		10	4401040022	ANELLO FISSAGGIO	
3	4401040903	PRESA A TERRA		11	4401040023	CORPO VALVOLA	
4	4401040017	COPERTURA INFERIORE DOCCIA D. 43		12	4401040110	TUBO 1/2'	
5	4401040018	POMELLO CICLINDRICO		13	* 4401040024	BRACCIO DOCCIA FILETTATO	
6	4401040019	ASSE VALVOLA		13	* 4401040267	BRACCIO DOCCIA	
7	4401040047	SET MANOPOLA		14	* 4401040021	GIUNTURA BRACCIO D. 40	
8	* 4401040020	SPRUZZATORE RETTANGOLARE FILETTAT		14	* 4401040266	SET DI 2 GIUNTA TORICA	
8	* 4401040226	SPRUZZATORE RETTANGOLARE VITE PRII		15	52717R0009	TUBO ESTERNO D.43	

CODICE **52717**

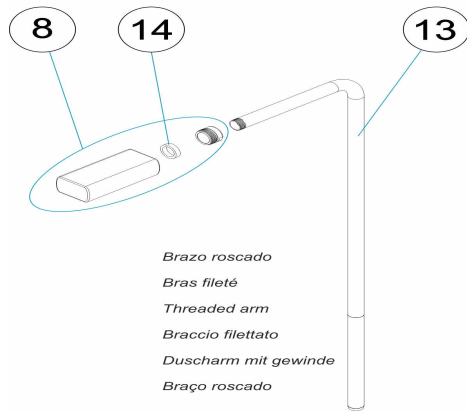
DESCRIZIONE: **DOCCIA ANGEL**

OSSERVAZIONI

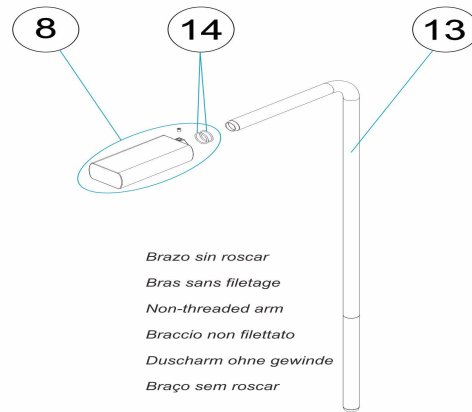
POS	CODICE	OSSERVAZIONI
8	* 4401040020	PER: THREADED ARM
8	* 4401040226	PER: NON-THREADED ARM
13	* 4401040024	PER: THREADED ARM
13	* 4401040267	PER: NON-THREADED ARM
14	* 4401040021	PER: THREADED ARM
14	* 4401040266	PER: NON-THREADED ARM

CODE 52717

BESCHREIBUNG: DUSCHE ANGEL

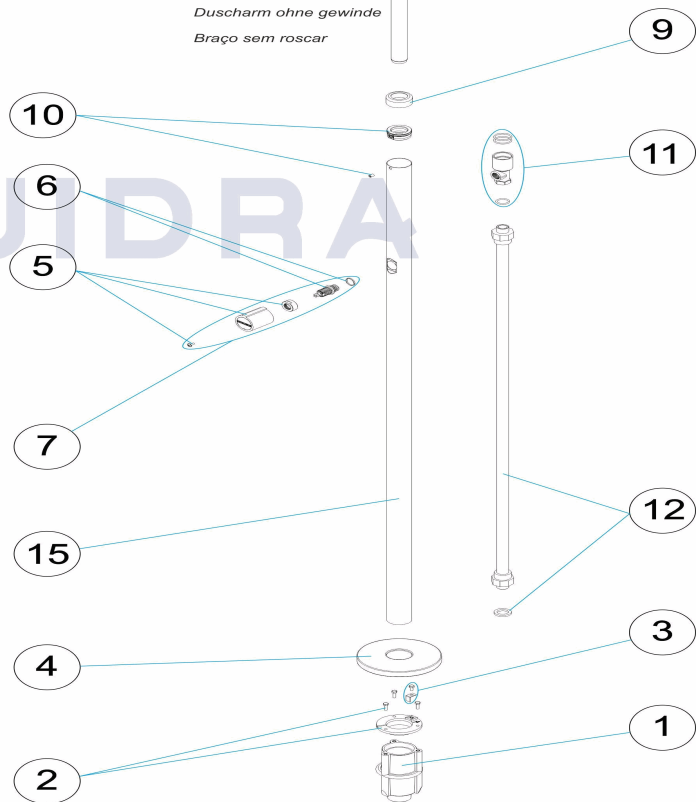


Brazo roscado
Bras fileté
Threaded arm
Braccio filettato
Duscharm mit gewinde
Braço roscado



Brazo sin roscar
Bras sans filetage
Non-threaded arm
Braccio non filettato
Duscharm ohne gewinde
Braço sem roscar

FLUIDRA



DEUTSCH

POS	CODE	BESCHREIBUNG	MENGE	POS	CODE	BESCHREIBUNG	MENGE
1	4401040109	VERANKERUNG DUSCHEINHEIT		9	4401040106	DEKO-ABSCHLUSSRING OBEN 43	
2	4401040108	FIXIERUNG DUSCHVERANKERUNG 43		10	4401040022	FIXIERRING	
3	4401040903	ERDUNG		11	4401040023	GEHÄUSE VENTIL	
4	4401040017	ABSCHLUSSPLATTE UNTEN DUSCHE D. 4'		12	4401040110	ROHR 1/2'	
5	4401040018	DREHGRIF ZYLINDRISCH		13	* 4401040024	DUSCHARM MIT GEWINDE	
6	4401040019	VENTILACHSE		13	* 4401040267	DUSCHARM	
7	4401040047	SET DREHGRIF DUSCHE		14	* 4401040021	DICHTUNG ARM D. 80	
8	* 4401040020	DUSCHKOPF RECHTECKIG MIT GEWINDE		14	* 4401040266	SET 2 O-RINGE	
8	* 4401040226	DUSCHKOPF RECHTECKIG MIT MADENSCH		15	52717R0009	AUSSENROHR D. 43	

CODE **52717**

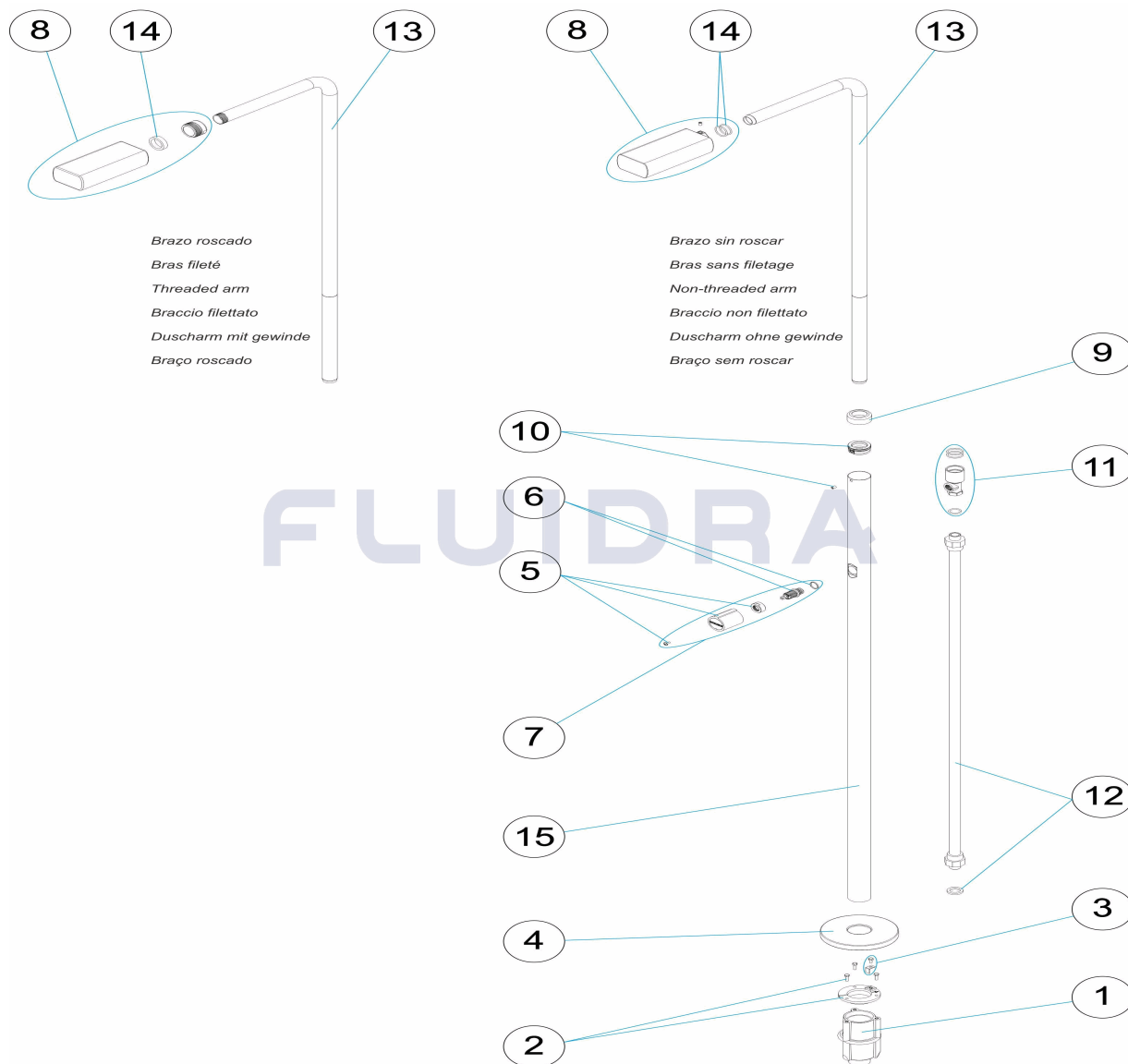
BESCHREIBUNG: **DUSCHE ANGEL**

HINWEISE

POS	CODE	HINWEISE
8	* 4401040020	FÜR: THREADED ARM
8	* 4401040226	FÜR: NON-THREADED ARM
13	* 4401040024	FÜR: THREADED ARM
13	* 4401040267	FÜR: NON-THREADED ARM
14	* 4401040021	FÜR: THREADED ARM
14	* 4401040266	FÜR: NON-THREADED ARM

CODIGO **52717**

DESCRIÇÃO: **DUCHE ANGEL**



PORTUGUES

POS	CODIGO	DESCRIÇÃO	JANTIDADE	POS	CODIGO	DESCRIÇÃO	JANTIDADE
1	4401040109	CORPO ÂNCORA CHUVEIRO		9	4401040106	ANTIDERRAPANTE	
2	4401040108	FIXAÇÃO ÂNCORA CHUVEIRO D 43		10	4401040022	ANEL DE FIXAÇÃO	
3	4401040903	LIGAÇÃO A TERRA		11	4401040023	CORPO VÁLVULA	
4	4401040017	PLACA ESTANQUE INFERIOR DUCHE D. 43		12	4401040110	TUBO 1/2"	
5	4401040018	MAÇANETA CILÍNDRICA		13	* 4401040024	BRAÇO CHUVEIRO ROSCADO	
6	4401040019	EIXO VÁLVULA		13	* 4401040267	BRAÇO CHUVEIRO	
7	4401040047	CJTO. PUXADOR		14	* 4401040021	JUNTA BRAÇO D. 40	
8	* 4401040020	DIFUSOR RETANGULAR ROSCADO		14	* 4401040266	CONJUNTO DE 2 JUNTAS TORICAS	
8	* 4401040226	DIFUSOR RETANGULAR COM PARAFUSO I		15	52717R0009	TUBO EXTERIOR D. 43	

CODIGO **52717**

DESCRIÇÃO: **DUCHE ANGEL**

OBSERVAÇÕES

POS	CODIGO	OBSERVAÇÕES
8	* 4401040020	PARA: THREADED ARM
8	* 4401040226	PARA: NON-THREADED ARM
13	* 4401040024	PARA: THREADED ARM
13	* 4401040267	PARA: NON-THREADED ARM
14	* 4401040021	PARA: THREADED ARM
14	* 4401040266	PARA: NON-THREADED ARM