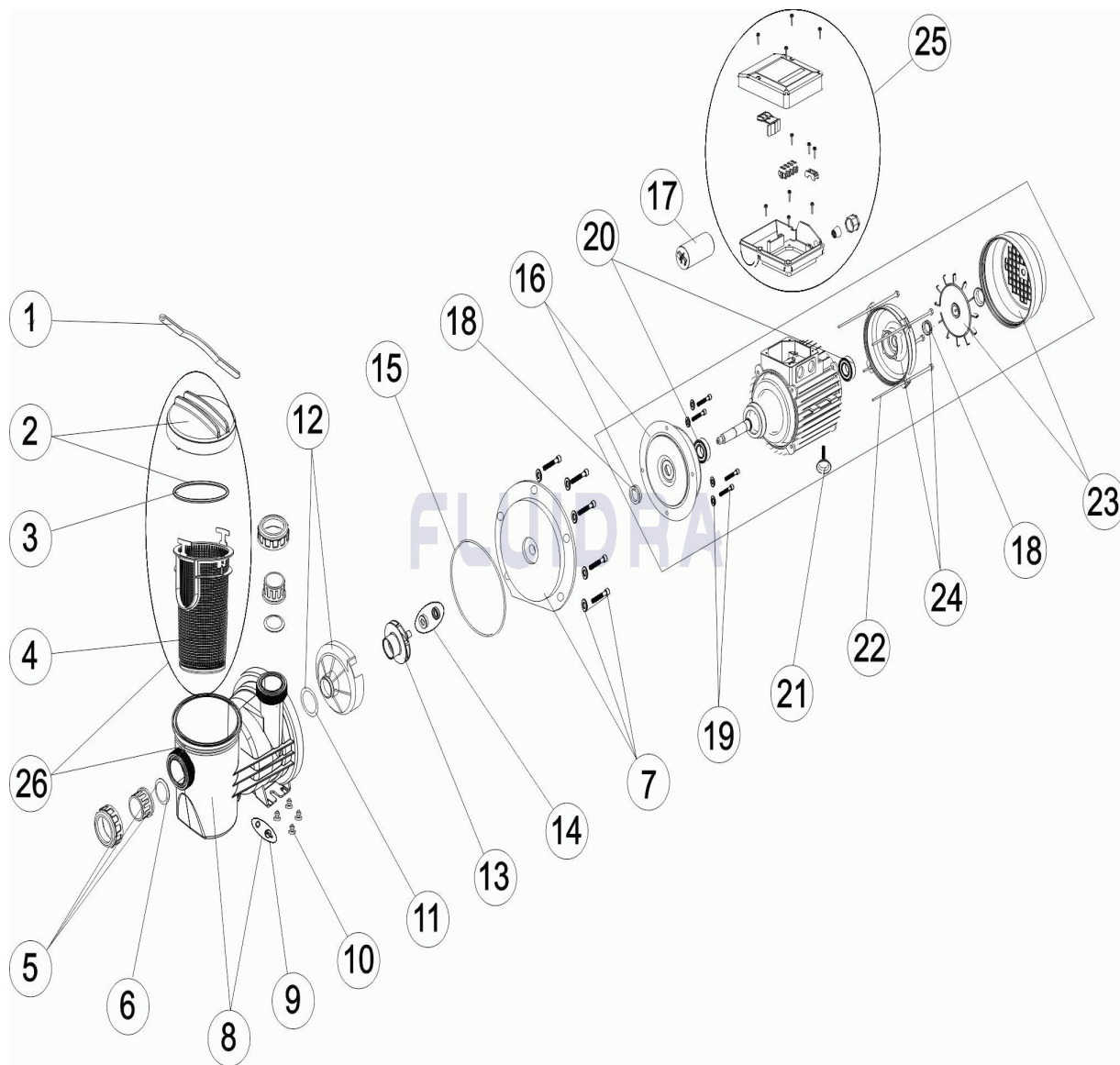


CODIGO **HPS031M, HPS051M, HPS075M, HPS101M, HPS151M**

 DESCRIPCION: **BOMBA HPS**

**ESPAÑOL**

POS	CODIGO	DESCRIPCION	CANTIDAD	POS	CODIGO	DESCRIPCION	CANTIDAD
1	CE05010436	LLAVE TAPA		13	* CE05012111	RODETE (1HP II)	
2	CE05010401	CIERRE PREFILTRO		13	* CE05012112	RODETE (1,5HP II)	
3	CE05010437	JUNTA TORICA D. 118X4		14	CE05012028	JUNTA MECANICA	
4	CE05012103	CESTO PREFILTRO		15	CE05010178	JUNTA TORICA D. 151,7X6,99	
5	CE05012104	ACCESORIOS ENLACE D.50		16	CE05012032	BRIDA MECANICA C.71 C/CAJERA D35 NEG	
6	CE05012105	JUNTA TORICA MANGUITO 47X6		17	* CE05010149	CONDENSADOR 12 UF 1/2 CV	
7	CE05012113	BRIDA SOPORTE MOTOR C.71		17	* CE05020121	CONDENSADOR 14 UF 3/4 CV	
8	CE05010263	CUERPO BOMBA HPS		17	* CE05020122	CONDENSADOR 16 UF 1 CV	
9	CE04121107	TAPON ¼ VALVULA		17	* CE05010150	CONDENSADOR 18 UF 1,5 CV	
10	CE05012012	TOPE GOMA HGS-HPS		18	CE05010158	V-RINGS 0,5 HP - 1 HP	
11	CE05012013	JUNTA TORICA 47,63X3,54		19	CE05012036	TORNILLOS FIJACION BRIDA C.80	
12	CE05012107	DIFUSOR		20	CE05012037	RODAMIENTO DEL. TRAS. 1/2 A 1,5 CV	
13	* CE05012108	RODETE (1/3HP II)		21	CE05012114	PIE MOTOR M-6X35 C. 90	

\* NOTA OBSERVACIONES

CODIGO **HPS031M, HPS051M, HPS075M, HPS101M, HPS151M**DESCRIPCION: **BOMBA HPS**

13	* CE05012109	RODETE (1/2HP II)	22	CE05010144	VARILLAS MOTOR 0,75 - 1 HP
13	* CE05012110	RODETE (3/4HP II)	23	CE05010147	CJTO. VENTILADOR-TAPA 0,75 - 1 HP
24	CE05012043	TAPA MOTOR MEC. C.71 C/CAJERA D35	26	CE05010262	CJTO. PREFILTRO HPS
25	CE05012048	CJTO. CAJA BORNES (MOTOR II) C.80			

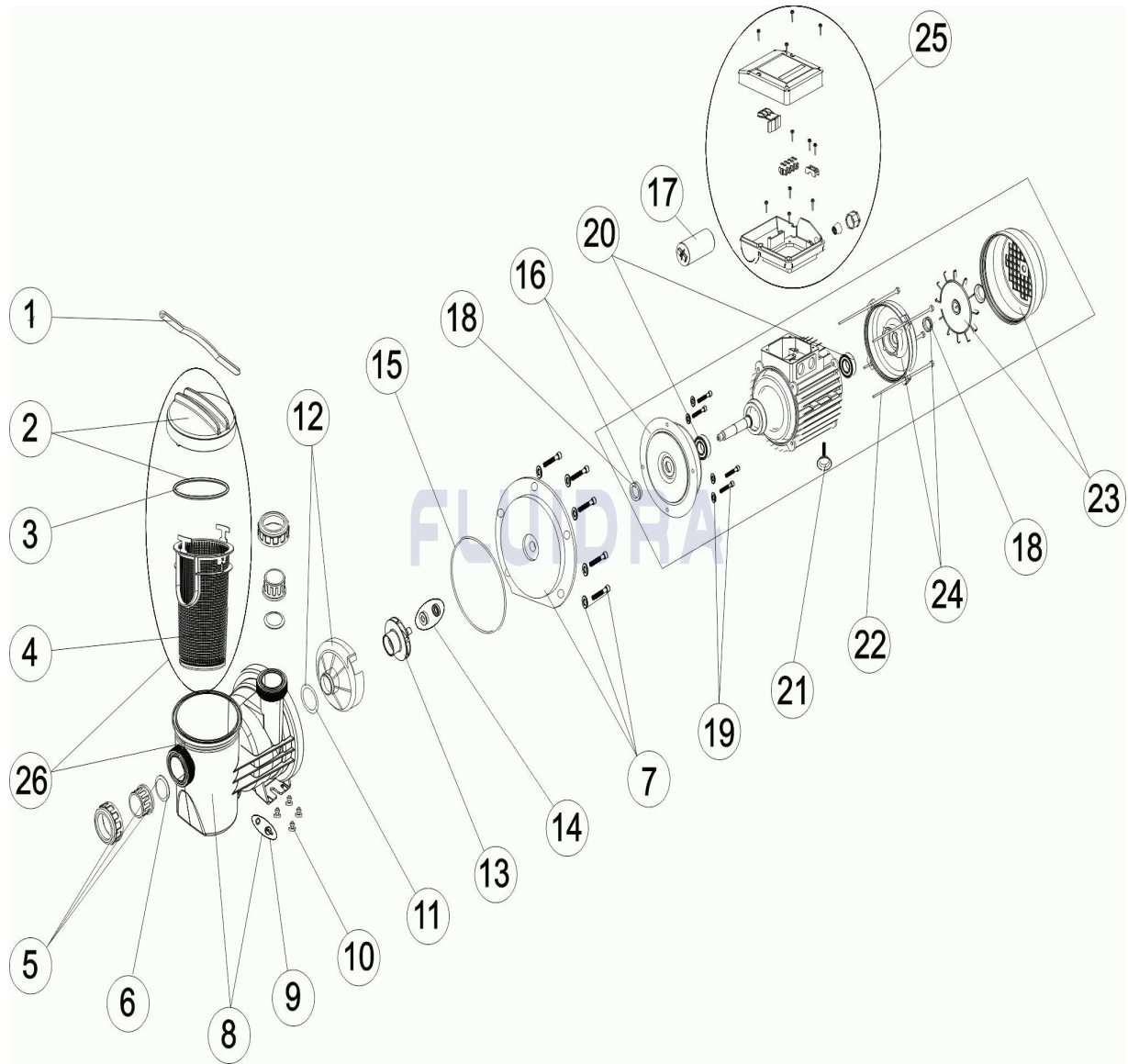
CODIGO **HPS031M, HPS051M, HPS075M, HPS101M, HPS151M**DESCRIPCION: **BOMBA HPS**

### OBSERVACIONES

POS	CODIGO	OBSERVACIONES
13	*CE05012108	PARA: HPS031M
13	*CE05012109	PARA: HPS051M
13	*CE05012110	PARA: HPS075M
13	*CE05012111	PARA: HPS101M
13	*CE05012112	PARA: HPS151M
17	*CE05010149	PARA: HPS031M, HPS051M
17	*CE05020121	PARA: HPS075M
17	*CE05020122	PARA: HPS101M
17	*CE05010150	PARA: HPS151M

CODE HPS031M, HPS051M, HPS075M, HPS101M, HPS151M

DESCRIPTION: POMPE HPS


**FRANCAIS**

POS	CODE	DESCRIPTION	QUANTITE	POS	CODE	DESCRIPTION	QUANTITE
1	CE05010436	CLE COUVERCLE		13	* CE05012111	TURBINE (1 HP II)	
2	CE05010401	FERMETURE PREFILTRE		13	* CE05012112	TURBINE (1,5 HP II)	
3	CE05010437	JOINT TORIQUE D 118X4		14	CE05012028	GARNITURE MÉCANIQUE	
4	CE05012103	PANIER PRÉFILTRE		15	CE05010178	JOINT TORIQUE D 151,7X6,99	
5	CE05012104	RACCORDS UNION D 50		16	CE05012032	BRIDE MEC C.71 AVEC EMBOITEMENT D.35	
6	CE05012105	JOINT TORIQUE MANCHON 47X6		17	* CE05010149	CONDENSATEUR 12 UF 1/2 CV	
7	CE05012113	BRIDE SUPPORT MOTEUR C.71		17	* CE05020121	CONDENSATEUR 14 UF 3/4 CV	
8	CE05010263	CORPS POMPE HPS		17	* CE05020122	CONDENSATEUR 16 UF 1 CV	
9	CE04121107	BOUCHON 1/4' DE VANNE		17	* CE05010150	CONDENSATEUR 18 UF	
10	CE05012012	SILENT-BLOCK		18	CE05010158	V-RINGS 0,5 HP - 1 HP	
11	CE05012013	JOINT TORIQUE 47,63X3,54		19	CE05012036	VIS FIXATION BRIDE C.80	
12	CE05012107	DIFFUSEUR		20	CE05012037	ROULEMENT AVANT & ARRIÈRE	
13	* CE05012108	TURBINE (1/3 HP II)		21	CE05012114	PIED MOTEUR M-6X35 C. 90	

\* VOIR FICHE D'OBSERVATIONS

CODE **HPS031M, HPS051M, HPS075M, HPS101M, HPS151M**DESCRIPTION: **POMPE HPS**

13	* CE05012109	TURBINE (1/2 HP II)	22	CE05010144	TIRANTS D'ACCOUPLMENT MOTEUR 0,75
13	* CE05012110	TURBINE (3/4 HP II)	23	CE05010147	ENSEMBLE COUVERCLE VENTILATEUR 0,7
24	CE05012043	COUVERCLE MOTEUR MEC. C.71 ET RAINI	26	CE05010262	KIT PRÉ FILTER COMPLET HPS
25	CE05012048	ENSEMBLE CAISSON BORNES (MOTEUR I			

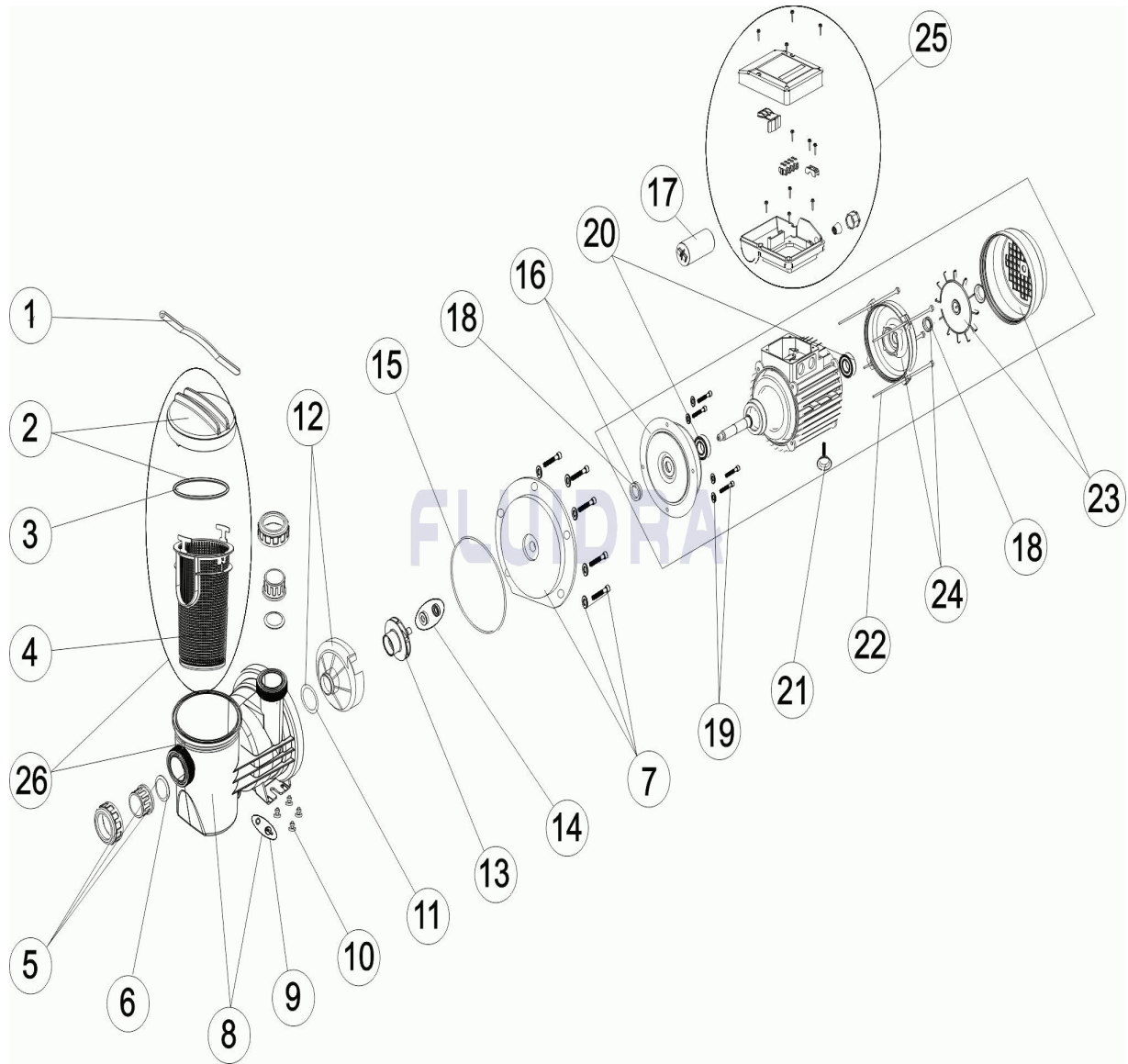
CODE **HPS031M, HPS051M, HPS075M, HPS101M, HPS151M**DESCRIPTION: **POMPE HPS**

## OBSERVATIONS

POS	CODE	OBSERVATIONS
13	*CE05012108	POUR: HPS031M
13	*CE05012109	POUR: HPS051M
13	*CE05012110	POUR: HPS075M
13	*CE05012111	POUR: HPS101M
13	*CE05012112	POUR: HPS151M
17	*CE05010149	POUR: HPS031M, HPS051M
17	*CE05020121	POUR: HPS075M
17	*CE05020122	POUR: HPS101M
17	*CE05010150	POUR: HPS151M

CODE HPS031M, HPS051M, HPS075M, HPS101M, HPS151M

DESCRIPTION: HPS PUMP



**ENGLISH**

POS	CODE	DESCRIPTION	QUANTITY	POS	CODE	DESCRIPTION	QUANTITY
1	CE05010436	LID KEY		13	* CE05012111	IMPELLER (1 HP II)	
2	CE05010401	PRE-FILTER CLOSURE		13	* CE05012112	IMPELLER (1,5 HP II)	
3	CE05010437	O' RING D 118X4		14	CE05012028	MECHANICAL SEAL	
4	CE05012103	PRE-FILTER BASKET		15	CE05010178	O' RING D 151,7X6,99	
5	CE05012104	UNION FITTINGS D 50		16	CE05012032	MEC. MOTOR BRIDLE C.71	
6	CE05012105	SOCKET O'RING 47X6		17	* CE05010149	CONDENSER 12 UF 1/2 CV	
7	CE05012113	MOTOR BRIDLE C.71		17	* CE05020121	CONDENSER 14 UF 3/4 CV	
8	CE05010263	PUMP HOUSING HPS		17	* CE05020122	CONDENSER 16 UF 1 CV	
9	CE04121107	PLUG 1/4"		17	* CE05010150	CONDENSER 18 UF 1,5 CV	
10	CE05012012	SILENBLOCK		18	CE05010158	V-RINGS 0,5 HP - 1 HP	
11	CE05012013	O' RING 47,63X3,54		19	CE05012036	SCREWS FIXING DIVING BRIDLE C.80	
12	CE05012107	DIFFUSER		20	CE05012037	FRONT & REAR BEARING	
13	* CE05012108	IMPELLER (1/3 HP II)		21	CE05012114	STAND BASE M-6X35 C. 90	

\* SEE OBSERVATIONS SHEET

CODE                    **HPS031M, HPS051M, HPS075M, HPS101M, HPS151M**DESCRIPTION: **HPS PUMP**

13	* CE05012109	IMPELLER (1/2 HP II)	22	CE05010144	MOTOR TIES 0,75 - 1 HP
13	* CE05012110	IMPELLER (3/4 HP II)	23	CE05010147	FAN COVER ASSEMBLY 0,75 - 1 HP
24	CE05012043	MEC. MOTOR COVER C.71	26	CE05010262	PREFILTER ASSEMBLY KIT HPS
25	CE05012048	TERMINAL BOX ASSEMBLY (MOTOR II) C.8			

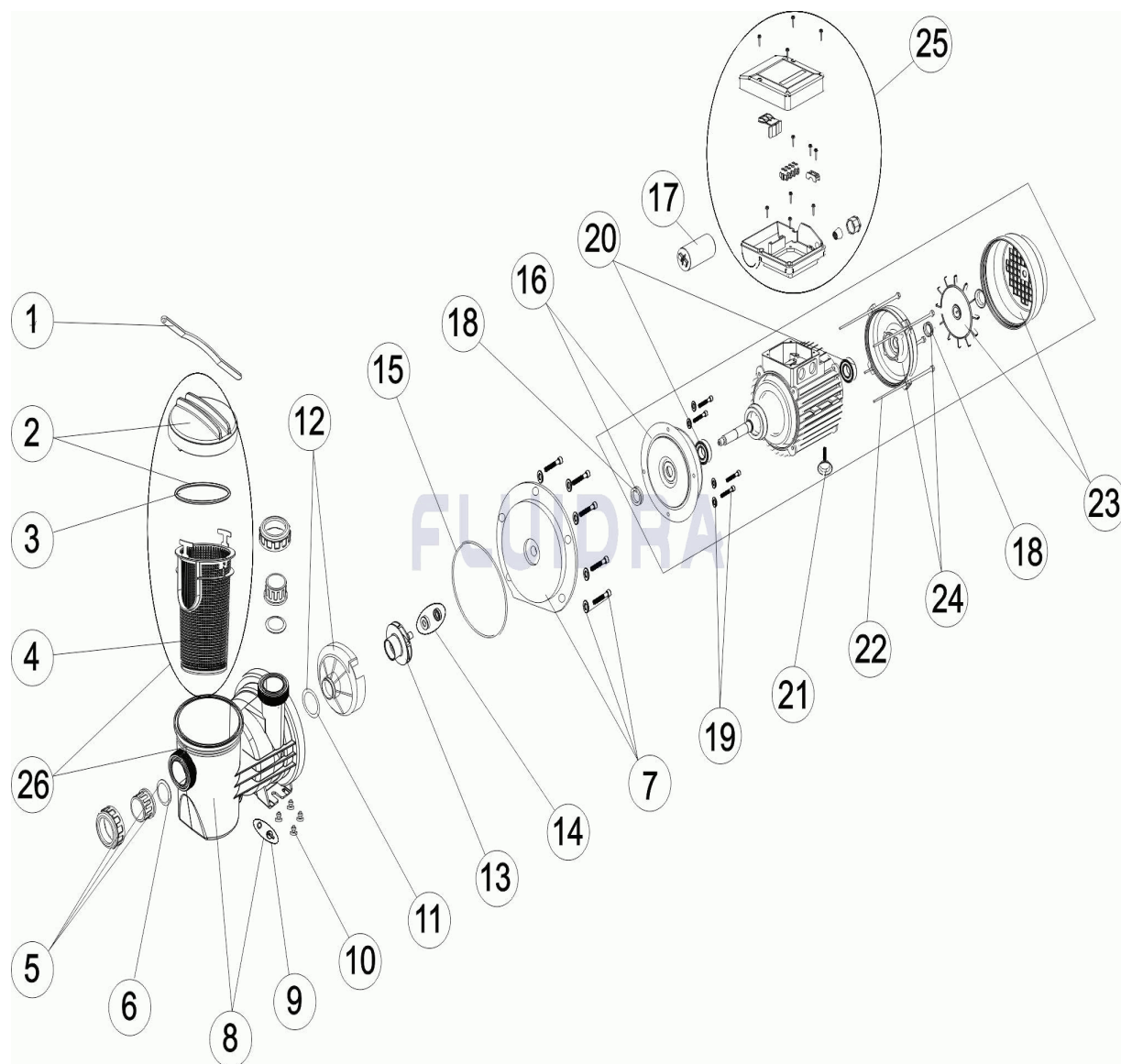


CODE                    **HPS031M, HPS051M, HPS075M, HPS101M, HPS151M**DESCRIPTION: **HPS PUMP**

## OBSERVATIONS

POS	CODE	OBSERVATIONS
13	*CE05012108	FOR: HPS031M
13	*CE05012109	FOR: HPS051M
13	*CE05012110	FOR: HPS075M
13	*CE05012111	FOR: HPS101M
13	*CE05012112	FOR: HPS151M
17	*CE05010149	FOR: HPS031M, HPS051M
17	*CE05020121	FOR: HPS075M
17	*CE05020122	FOR: HPS101M
17	*CE05010150	FOR: HPS151M

CODICE **HPS031M, HPS051M, HPS075M, HPS101M, HPS151M**

 DESCRIZIONE: **POMPA HPS**

**ITALIANO**

POS	CODICE	DESCRIZIONE	QUANTITA'	POS	CODICE	DESCRIZIONE	QUANTITA'
1	CE05010436	CHIAVE COPERCHIO		13	* CE05012111	RUOTA (1 HP II)	
2	CE05010401	CHIUSURA PREFILTRO		13	* CE05012112	RUOTA (1,5 HP II)	
3	CE05010437	O-RING D 118X4		14	CE05012028	TENUTA MECCANICA	
4	CE05012103	CESTO PREFILTRO		15	CE05010178	O-RING D 151,7X6,99	
5	CE05012104	MANICOTTI DI UNIONE D 50		16	CE05012032	TENUTA MECCANICA C.71 CASSA D. 35	
6	CE05012105	O-RING MANICOTTO 47X6		17	* CE05010149	CONDENSATORE 12 UF 1/2 CV	
7	CE05012113	FLANGIA SUPPORTO MOTORE C.71		17	* CE05020121	CONDENSATORE 14 UF 3/4 CV	
8	CE05010263	CORPO POMBA HPS		17	* CE05020122	CONDENSATORE 16 UF 1 CV	
9	CE04121107	COPERCHIO 1/4' VALVOLA		17	* CE05010150	CONDENSATORE 18 UF 1,5 CV	
10	CE05012012	SILENTBLOC		18	CE05010158	V-RINGS 0,5 HP - 1 HP	
11	CE05012013	O-RING 47,63X3,54		19	CE05012036	VITI FISSAGGIO FLANGIA C.80	
12	CE05012107	DIFFUSORE		20	CE05012037	CUSCINETTO ANTERIORE & POSTERIORE	
13	* CE05012108	RUOTA (1/3 HP II)		21	CE05012114	PIEDE MOTORE M-6X35 C. 90	

\* SI FACCIÀ RIFERIMENTO AL FOGLIO DELLE OSSERVAZIONI

CODICE **HPS031M, HPS051M, HPS075M, HPS101M, HPS151M**DESCRIZIONE: **POMPA HPS**

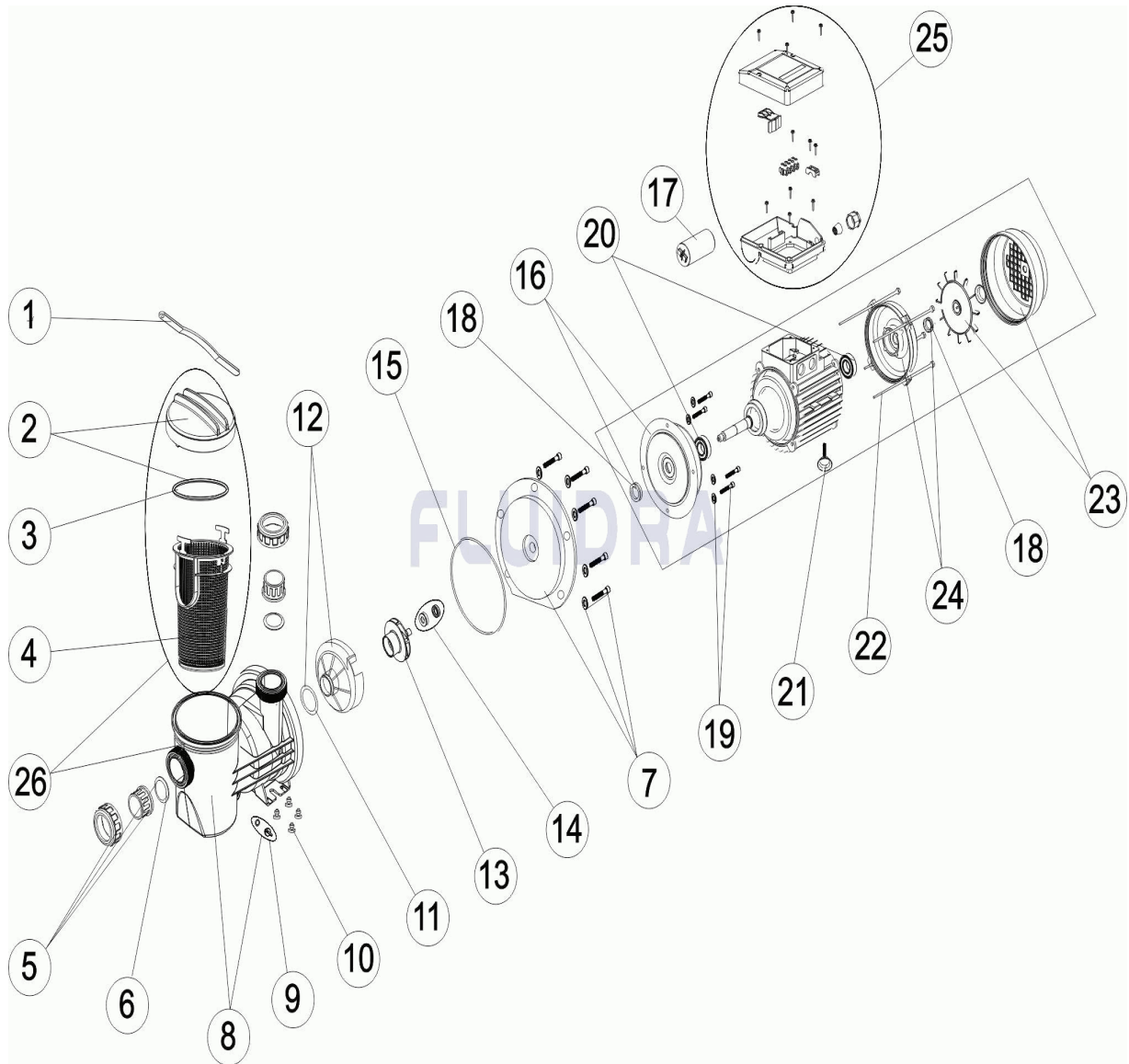
13	* CE05012109	RUOTA (1/2 HP II)	22	CE05010144	ASTAS MOTORE 0,75 - 1 HP
13	* CE05012110	RUOTA (3/4 HP II)	23	CE05010147	KIT VENTOLA-COPRIVENTOLA 0,75 - 1 HP
24	CE05012043	COPERCHIO MOTORE MEC. C.71 C/CASSII	26	CE05010262	KIT PREFILTRO HPS
25	CE05012048	SET CASSETTA TERMINALI (MOTORE II) C.			

CODICE **HPS031M, HPS051M, HPS075M, HPS101M, HPS151M**DESCRIZIONE: **POMPA HPS**

## OSSERVAZIONI

POS	CODICE	OSSERVAZIONI
13	*CE05012108	PER: HPS031M
13	*CE05012109	PER: HPS051M
13	*CE05012110	PER: HPS075M
13	*CE05012111	PER: HPS101M
13	*CE05012112	PER: HPS151M
17	*CE05010149	PER: HPS031M, HPS051M
17	*CE05020121	PER: HPS075M
17	*CE05020122	PER: HPS101M
17	*CE05010150	PER: HPS151M

CODE **HPS031M, HPS051M, HPS075M, HPS101M, HPS151M**

 BESCHREIBUNG: **PUMPE HPS**

**DEUTSCH**

POS	CODE	BESCHREIBUNG	MENGE	POS	CODE	BESCHREIBUNG	MENGE
1	CE05010436	SCHLÜSSEL ABDECKUNG		13	* CE05012111	LAUFRAD (1 HP II)	
2	CE05010401	SCHLISSVORRICHTUNG VORFILTER		13	* CE05012112	LAUFRAD (1,5 HP II)	
3	CE05010437	O-RING D. 118 X 4		14	CE05012028	GLEITRINGDICHTUNG	
4	CE05012103	VORFILTERKORB		15	CE05010178	O-RING D. 151,7 X 6,99	
5	CE05012104	ANSCHLUSSZUBEHÖR D. 50		16	CE05012032	GLEITRINGDICHTUNG C.71 MIT RINGLAGE	
6	CE05012105	O-RING NIPPEL 47 X 6		17	* CE05010149	KONDENSATOR 12 UF 1/2 CV	
7	CE05012113	FLANSCH MOTORHALTERUNG C.71		17	* CE05020121	KONDENSATOR 14 UF 3/4 CV	
8	CE05010263	PUMPENGHÄUSE PSS		17	* CE05020122	KONDENSATOR 16 UF 1 CV	
9	CE04121107	STOPFEN 1/4' VENTIL		17	* CE05010150	KONDENSATOR 18 UF 1,5 CV	
10	CE05012012	ABSCHLUSS GUMMI HGS - PSS		18	CE05010158	DICHTUNGSRINGE 0,5 HP - 1 HP	
11	CE05012013	O-RING 47,63 X 3,54		19	CE05012036	FIXIERSCHRAUBEN FLANSCH C.80	
12	CE05012107	WASSERVERTEILER		20	CE05012037	WÄLZLAGER VORNE-HINTEN 1/2 - 1,5 CV	
13	* CE05012108	LAUFRAD (1/3 HP II)		21	CE05012114	FUSS MOTOR M-6 X 35 C. 90	

\* SIEHE ANMERKUNGSBLATT

CODE **HPS031M, HPS051M, HPS075M, HPS101M, HPS151M**BESCHREIBUNG: **PUMPE HPS**

13	* CE05012109	LAUFRAD (1/2 HP II)	22	CE05010144	RUNDEISEN MOTOR 0,75 - 1 HP
13	* CE05012110	LAUFRAD (3/4 HP II)	23	CE05010147	SET VENTILATOR - ABDECKUNG 0,75 - 1 HF
24	CE05012043	MOTORDECKEL MECH. C.71 MIT RINGLAG	26	CE05010262	SET VORFILTER PSS
25	CE05012048	SET KLEMMSCHRANK (MOTOR II) C.80			

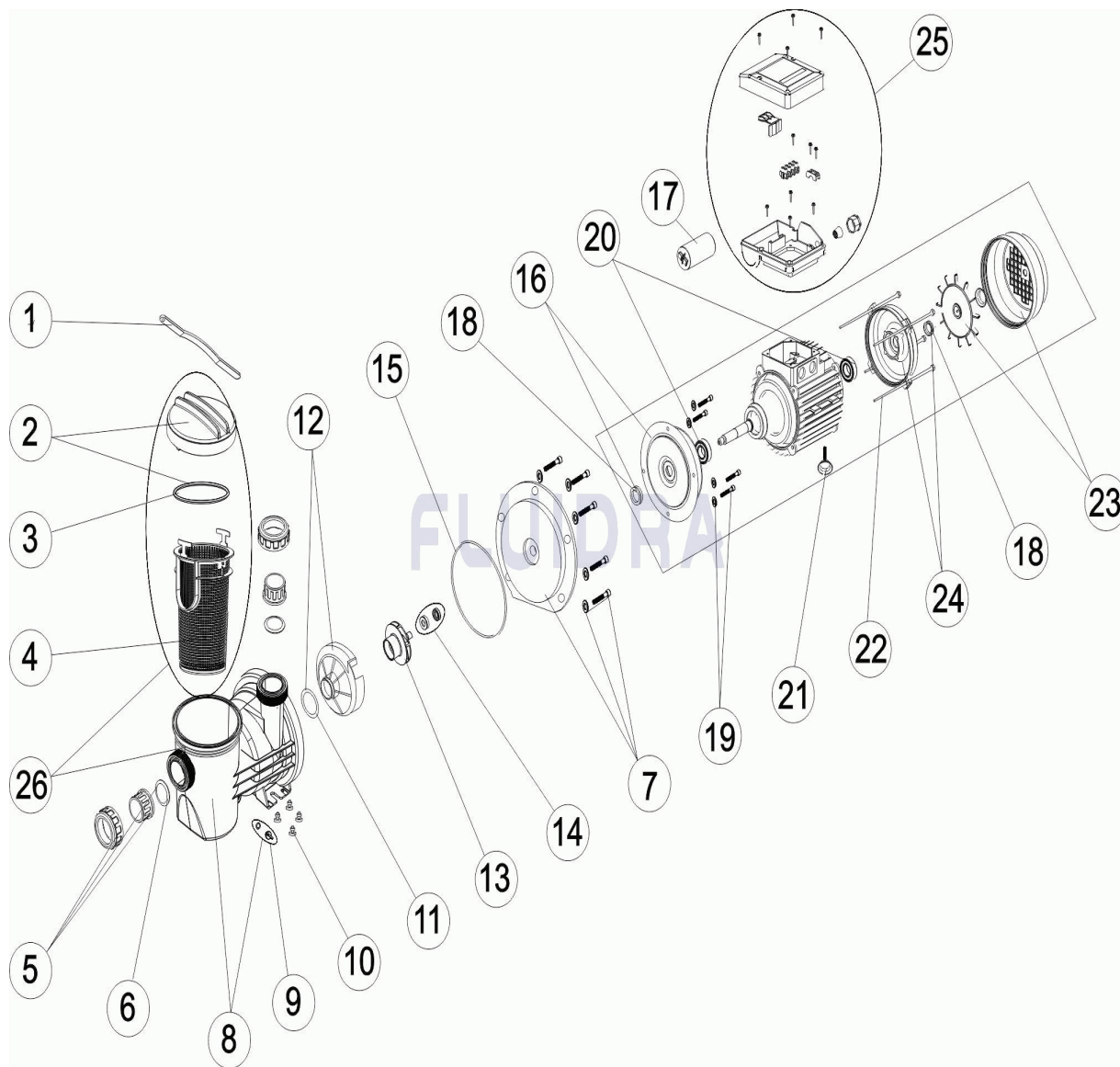
CODE **HPS031M, HPS051M, HPS075M, HPS101M, HPS151M**

BESCHREIBUNG: **PUMPE HPS**

## HINWEISE

POS	CODE	HINWEISE
13	*CE05012108	FÜR: HPS031M
13	*CE05012109	FÜR: HPS051M
13	*CE05012110	FÜR: HPS075M
13	*CE05012111	FÜR: HPS101M
13	*CE05012112	FÜR: HPS151M
17	*CE05010149	FÜR: HPS031M, HPS051M
17	*CE05020121	FÜR: HPS075M
17	*CE05020122	FÜR: HPS101M
17	*CE05010150	FÜR: HPS151M

CODIGO **HPS031M, HPS051M, HPS075M, HPS101M, HPS151M**

 DESCRIÇÃO: **BOMBA HPS**

**PORTUGUES**

POS	CODIGO	DESCRIÇÃO	JANTIDADE	POS	CODIGO	DESCRIÇÃO	JANTIDADE
1	CE05010436	CHAVE TAMPA		13	* CE05012111	RODÍZIO (1 HP II)	
2	CE05010401	FECHO-PRÉ-FILTRO		13	* CE05012112	RODÍZIO (1,5 HP II)	
3	CE05010437	JUNTA TÓRICA D 118X4		14	CE05012028	JUNTA MECÂNICA	
4	CE05012103	CESTO PRÉ-FILTRO		15	CE05010178	JUNTA TÓRICA D 151,7X6,99	
5	CE05012104	ACESSÓRIOS DE UNIÃO D 50		16	CE05012032	BRIDA MEC. C.71 C/CAIXA D.35	
6	CE05012105	JUNTA DE UNIÃO 47X6		17	* CE05010149	CONDENSADOR 12 UF 1/2 CV	
7	CE05012113	FLANGE SUPORTE MOTOR C.71		17	* CE05020121	CONDENSADOR 14 UF 3/4 CV	
8	CE05010263	CORPO BOMBA HPS		17	* CE05020122	CONDENSADOR 16 UF 1 CV	
9	CE04121107	TAMPÃO 1/4" VÁLVULA		17	* CE05010150	CONDENSADOR 18 UF 1,5 CV	
10	CE05012012	SILENT-BLOCK		18	CE05010158	V-RINGS 0,5 HP - 1 HP	
11	CE05012013	JUNTA TÓRICA 47,63X3,53		19	CE05012036	PARAFUSOS FIXAÇÃO FLANGE C.80	
12	CE05012107	DIFUSOR		20	CE05012037	ROLAMENTO DIANTEIRO & TRASEIRO	
13	* CE05012108	RODÍZIO (1/3 HP II)		21	CE05012114	PÉ MOTOR M-6X35 C. 90	

\* VEJA A FICHA DE OBSERVAÇÕES



CODIGO **HPS031M, HPS051M, HPS075M, HPS101M, HPS151M**DESCRIÇÃO: **BOMBA HPS**

13	* CE05012109	RODÍZIO (1/2 HP II)	22	CE05010144	VARETAS MOTOR 0,75 - 1 HP
13	* CE05012110	RODÍZIO (3/4 HP II)	23	CE05010147	CONJUNTO VENTILLADOR-TAMPA 0,75 - 1 HP
24	CE05012043	TAMPA MOTOR MEC. C.71 C/RANHURA D3!	26	CE05010262	CONJUNTO PRE-FILTRO HPS
25	CE05012048	CJTO. CAIXA TERMINAIS (MOTOR II) C.80			

CODIGO **HPS031M, HPS051M, HPS075M, HPS101M, HPS151M**DESCRIÇÃO: **BOMBA HPS****OBSERVAÇÕES**

POS	CODIGO	OBSERVAÇÕES
13	*CE05012108	PARA: HPS031M
13	*CE05012109	PARA: HPS051M
13	*CE05012110	PARA: HPS075M
13	*CE05012111	PARA: HPS101M
13	*CE05012112	PARA: HPS151M
17	*CE05010149	PARA: HPS031M, HPS051M
17	*CE05020121	PARA: HPS075M
17	*CE05020122	PARA: HPS101M
17	*CE05010150	PARA: HPS151M