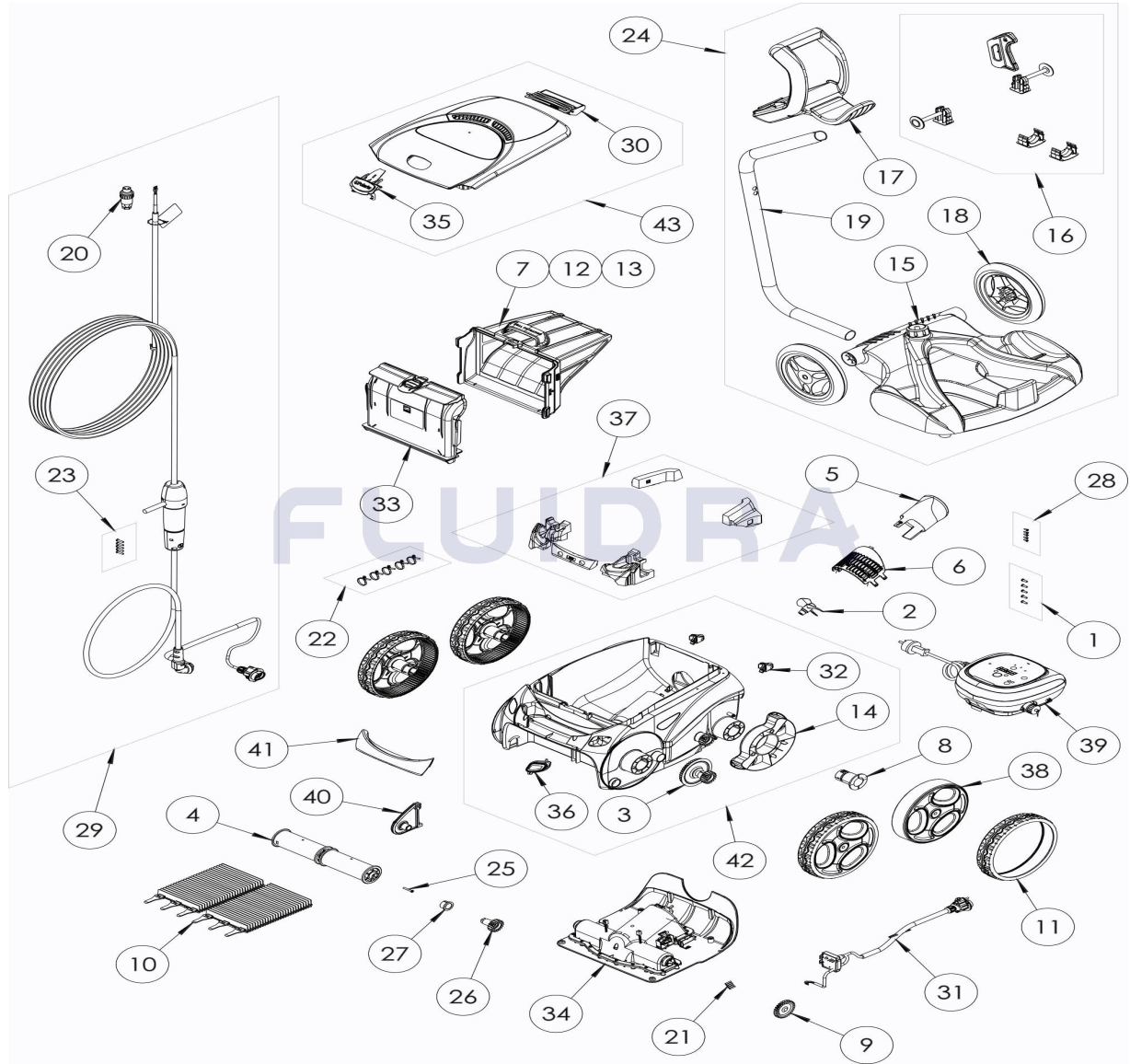


CODIGO

WR000426

DESCRIPCION: W 675


ESPAÑOL

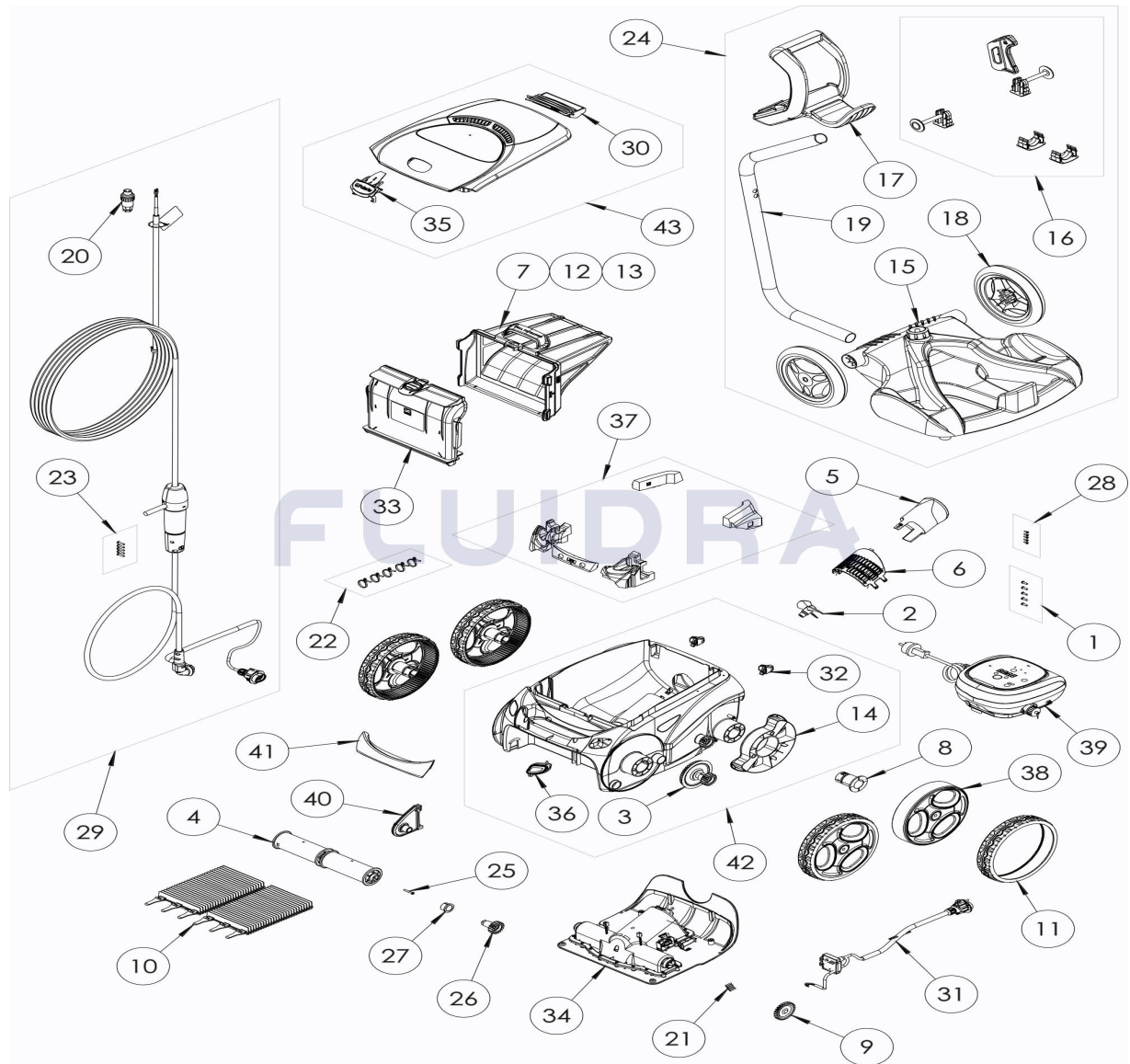
| POS | CODIGO | DESCRIPCION | CANTIDAD | POS | CODIGO | DESCRIPCION | CANTIDAD |
|-----|----------|-------------------------------------|----------|-----|----------|-------------------------------------|----------|
| 1 | R0516700 | TORNILLO 4*12 MM (PACK DE 5 UN.) | 1 | 16 | R0564900 | KIT ACCESORIOS CARRO | 1 |
| 2 | R0517000 | HÉLICE | 1 | 17 | R0565000 | EMPUÑADURA CARRO DE TRANSPORTE | 1 |
| 3 | R0517200 | CJTO.TRANSMISIÓN | 4 | 18 | R0565100 | RUEDAS CARRO DE TRANSPORTE (Pack 2 | 1 |
| 4 | R0517400 | RODILLO PORTACEPILLOS (Pack 2 UN) | 1 | 19 | R0565200 | TUBO CARRO DE TRANSPORTE | 1 |
| 5 | R0517500 | CANALIZADOR DE FLUJO | 1 | 20 | R0565600 | CONECTOR DE CABLE 4 PINS | 1 |
| 6 | R0517600 | MALLA PROTECCIÓN | 1 | 21 | R0567800 | CLIP FIJADOR 3*16 MM (Pack 5 UN) | 1 |
| 7 | R0517800 | DEPÓSITO DE LIMO/ARENA FINA GP | 1 | 22 | R0567900 | ABRAZADERAS CABLE FLOTANTE (Pack 5 | 1 |
| 8 | R0518500 | CASQUILLO COJINETE RUEDA GP | 4 | 23 | R0608500 | TORNILLO 4*16 MM (PACK DE 5 UN | 1 |
| 9 | R0518800 | PIÑÓN 27 DIENTES (Pack 2 UN) | 1 | 24 | R0609100 | CARRO V | 1 |
| 10 | R0528900 | CEPILLOS GP (PACK DE 2 UN) | 1 | 25 | R0638900 | TORNILLO 4*25 MM (Pack 5 UN) | 1 |
| 11 | R0529300 | NEUMÁTICO GRANDE NEGRA GP | 4 | 26 | R0639000 | PIÑÓN 17 DIENTES (Pack 2 UN) | 1 |
| 12 | R0535800 | DEPÓSITO DE LIMO/ARENA ULTRAFINA GF | 1 | 27 | R0639100 | CASQUILLO EXTERIOR (Pack 2 UN) | 1 |
| 13 | R0535900 | DEPÓSITO PARA USO GENERAL GP | 1 | 28 | R0639200 | TORNILLO 2.9*9.5 MM (Pack 5 UN) | 1 |

CODIGO **WR000426**DESCRIPCION: **W 675**

| | | | | | | | |
|----|----------|-------------------------------|---|----|----------|---------------------------------------|---|
| 14 | R0540300 | PROTECTOR DE RUEDA | 2 | 29 | R0726700 | CABLE FLOTANTE SWIVEL 21M | 1 |
| 15 | R0564800 | BASE CARRO DE TRANSPORTE | 1 | 30 | R0863200 | CONJUNTO DE FLOTADOR TRASERO | 1 |
| 31 | R0863300 | BLOQUE DE SENSORES MONTADOS | 1 | 38 | R0911100 | RUEDAS | 4 |
| 32 | R0864900 | CLIP FIJACIÓN (PACK 2 UN) | 1 | 39 | R0913500 | UNIDAD DE CONTROL TIPO 1 P | 1 |
| 33 | R0865100 | SOPORTE FILTRO | 1 | 40 | R0959500 | CLIP FIJACIÓN DE RODILLOS, GRIS CLARC | 1 |
| 34 | R0865400 | BLOQUE MOTOR TIPO 2 | 1 | 41 | R0959600 | EMPUÑADURA, AZUL OSCURO | 1 |
| 35 | R0867000 | CIERRE TAPA POLARIS | 1 | 42 | R0959700 | CARCASA COMPLETA, GRIS CLARO | 1 |
| 36 | R0867100 | TAPA TRANSPARENTE DE SENSORES | 1 | 43 | R0959900 | TAPA COMPLETA, GRIS CLARO | 1 |
| 37 | R0870100 | FLOTADOR | 1 | | | | |

CODE **WR000426**

DESCRIPTION: **W 675**



FRANCAIS

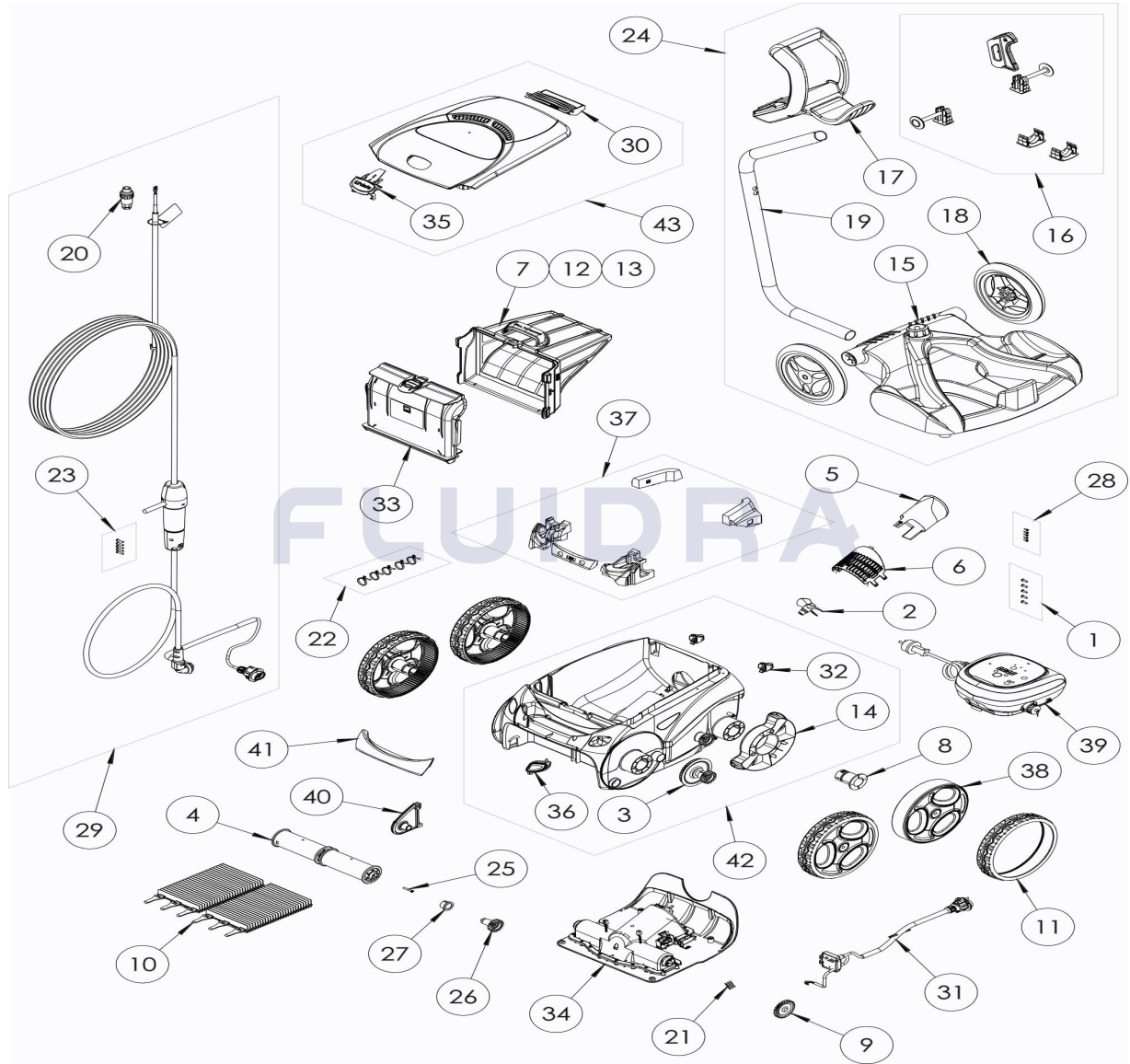
| POS | CODE | DESCRIPTION | QUANTITE | POS | CODE | DESCRIPTION | QUANTITE |
|-----|----------|------------------------------------|----------|-----|----------|-------------------------------|----------|
| 1 | R0516700 | VIS 4*12 MM (X5) | 1 | 16 | R0564900 | PIECES ACCESSOIRE CHARIOT | 1 |
| 2 | R0517000 | HELICE V | 1 | 17 | R0565000 | POIGNEE CHARIOT | 1 |
| 3 | R0517200 | TRANSMISSION | 4 | 18 | R0565100 | ROUES CHARIOT (*2) | 1 |
| 4 | R0517400 | SUPPORT BROSE (*2) | 1 | 19 | R0565200 | TUBE CHARIOT | 1 |
| 5 | R0517500 | GUIDE FLUX | 1 | 20 | R0565600 | CONNECTEUR 4 PTS | 1 |
| 6 | R0517600 | GRILLE MOTEUR | 1 | 21 | R0567800 | GOUPILLE 3*16 MM (*5) | 1 |
| 7 | R0517800 | CARTOUCHE DE LIMON/SABLE FIN GP | 1 | 22 | R0567900 | LIEN SERRAGE CABLE FLOTT (*5) | 1 |
| 8 | R0518500 | PALIER ROUE GP | 4 | 23 | R0608500 | VIS 4*16 MM A4 (*5) | 1 |
| 9 | R0518800 | PIGNON 27 DENTS (*2) | 1 | 24 | R0609100 | KIT CHARIOT V | 1 |
| 10 | R0528900 | BROSSE GP (*2) | 1 | 25 | R0638900 | VIS 4*25 MM (*5) | 1 |
| 11 | R0529300 | BANDAGE GD NOIR GP | 4 | 26 | R0639000 | PIGNON 17 DENTS (*2) | 1 |
| 12 | R0535800 | CARTOUCHE LIMON/SABLE À GRAIN TRÈS | 1 | 27 | R0639100 | PALIER EXTERIEUR (*2) | 1 |
| 13 | R0535900 | CARTOUCHE TOUT USAGE GP | 1 | 28 | R0639200 | VIS 2.9*9.5 MM (*5) | 1 |

CODE **WR000426**DESCRIPTION: **W 675**

| | | | | | | | |
|----|----------|-----------------------|---|----|----------|------------------------------|---|
| 14 | R0540300 | PROTECTION ROUE | 2 | 29 | R0726700 | CABLE FLOTTANT SWIVEL 21M | 1 |
| 15 | R0564800 | EMBASE CHARIOT | 1 | 30 | R0863200 | FLOTTEUR ARRIERE ASSEMBLE | 1 |
| 31 | R0863300 | BLOC CAPTEUR ASSEMBLE | 1 | 38 | R0911100 | ROUE | 4 |
| 32 | R0864900 | ROULETTES (*2) | 1 | 39 | R0913500 | COFFRET COMMANDE TYPE 1 P | 1 |
| 33 | R0865100 | SUPPORT BAC FILTRANT | 1 | 40 | R0959500 | PONTET BROSSE GRIS CLAIR | 1 |
| 34 | R0865400 | BLOC MOTEUR TYPE 2 | 1 | 41 | R0959600 | POIGNEE BLUE FONCE | 1 |
| 35 | R0867000 | LOQUET POLARIS | 1 | 42 | R0959700 | COQUE COMPLETE GRIS CLAIR | 1 |
| 36 | R0867100 | FENETRE CAPTEUR | 1 | 43 | R0959900 | COUVERCLE COMPLET GRIS CLAIR | 1 |
| 37 | R0870100 | FLOTTEUR | 1 | | | | |

CODE **WR000426**

DESCRIPTION: **W 675**



ENGLISH

| POS | CODE | DESCRIPTION | QUANTITY | POS | CODE | DESCRIPTION | QUANTITY |
|-----|----------|----------------------------------|----------|-----|----------|----------------------------------|----------|
| 1 | R0516700 | SCREWS 4*12 MM (X5) | 1 | 16 | R0564900 | TROLLEY ACCESSORIES | 1 |
| 2 | R0517000 | PROPELLER | 1 | 17 | R0565000 | TROLLEY HANDLE | 1 |
| 3 | R0517200 | TRANSMISSION | 4 | 18 | R0565100 | TROLLEY WHEELS (*2) | 1 |
| 4 | R0517400 | BRUSH ROLLER | 1 | 19 | R0565200 | TROLLEY TUBE | 1 |
| 5 | R0517500 | FLOW OUTLET | 1 | 20 | R0565600 | FLOATING CABLE PLUG | 1 |
| 6 | R0517600 | MOTOR SCREEN | 1 | 21 | R0567800 | MOTOR BLOCK SHAFT PIN (SET OF 5) | 1 |
| 7 | R0517800 | FILTER SAND/SILT CANISTER GP | 1 | 22 | R0567900 | FLOATING CABLE CLAMP (SET OF 5) | 1 |
| 8 | R0518500 | WHEEL BUSHING GP | 4 | 23 | R0608500 | SCREW 4*16MM (set of 5) | 1 |
| 9 | R0518800 | DRIVE GEAR (SET OF 2) | 1 | 24 | R0609100 | TROLLEY KIT V | 1 |
| 10 | R0528900 | BRUSH (SET OF 2) GP | 1 | 25 | R0638900 | SCREW 4*25 MM (SET OF 5) | 1 |
| 11 | R0529300 | LARGE TIRE BLACK GP | 4 | 26 | R0639000 | 17 GEAR (*2) | 1 |
| 12 | R0535800 | ULTRA FINE SAND/SILT CANISTER GP | 1 | 27 | R0639100 | OUTER BEARING (*2) | 1 |
| 13 | R0535900 | GENERAL PURPOSE CANISTER GP | 1 | 28 | R0639200 | SCREW 2.9*9.5 MM (SET OF 5) | 1 |



PARTS BREAKDOWN

REV.: 0
DATE: 19/11/2021
SHEET: 6/12

7227

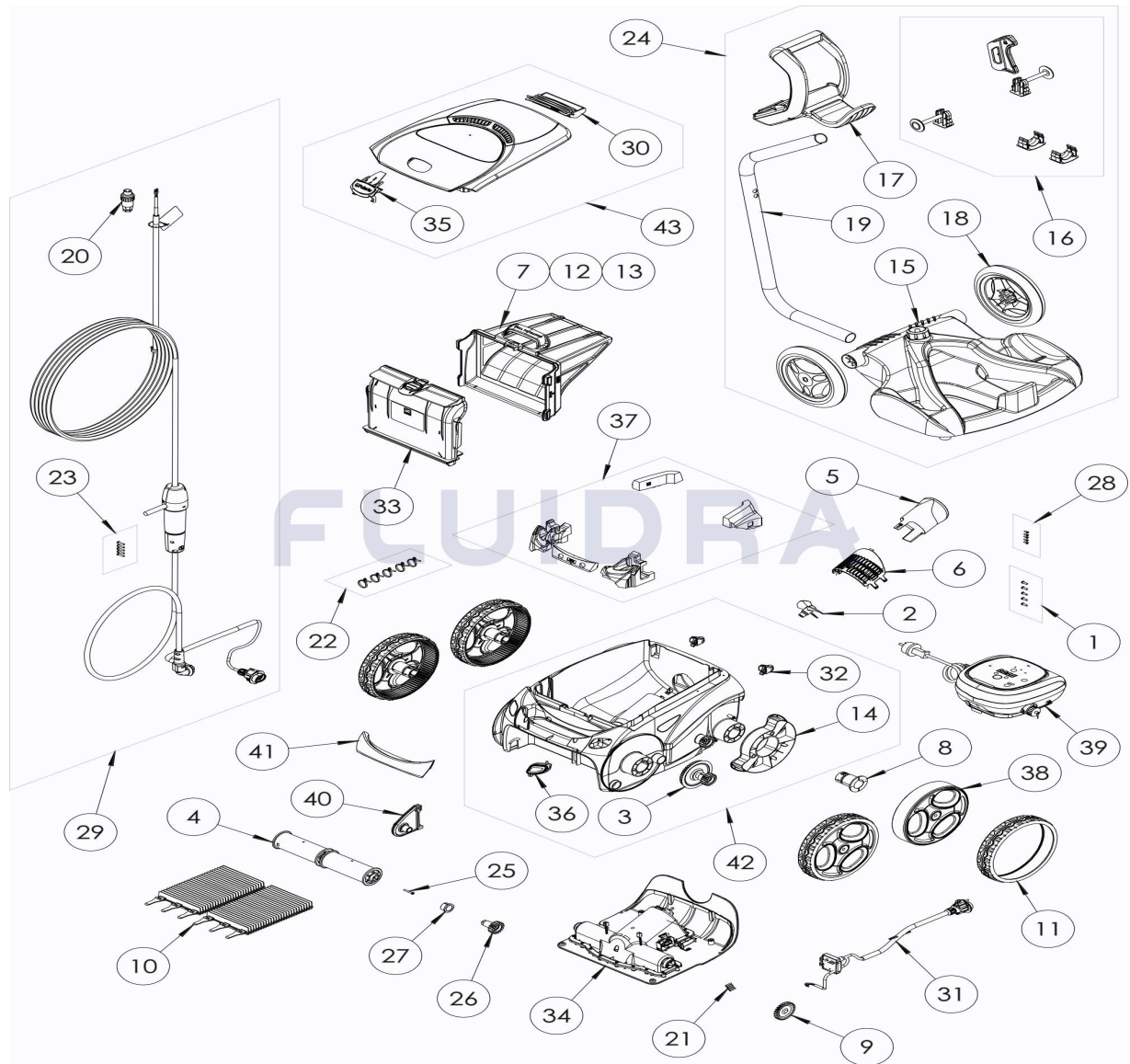
CODE **WR000426**

DESCRIPTION: **W 675**

| | | | | | | | |
|----|----------|-------------------------------|---|----|----------|-------------------------------|---|
| 14 | R0540300 | COVER WHEELS PROTECTION | 2 | 29 | R0726700 | SWIVEL FLOATING CABLE KIT 21M | 1 |
| 15 | R0564800 | TROLLEY BASE | 1 | 30 | R0863200 | REAR FLOAT ASSEMBLY | 1 |
| 31 | R0863300 | SENSOR BLOCK ASSEMBLY | 1 | 38 | R0911100 | WHEEL | 4 |
| 32 | R0864900 | ROLLER, 2PK | 1 | 39 | R0913500 | CONTROL BOX TYPE 1 P | 1 |
| 33 | R0865100 | FILTER CANISTER INLET HOUSING | 1 | 40 | R0959500 | ROLLER SUPPORT, LIGHT GREY | 1 |
| 34 | R0865400 | MOTOR BLOCK TYPE 2 | 1 | 41 | R0959600 | HANDLE, DARK BLUE | 1 |
| 35 | R0867000 | POLARIS LATCH | 1 | 42 | R0959700 | MAIN BODY HOUSING, LIGHT GREY | 1 |
| 36 | R0867100 | SENSOR WINDOW | 1 | 43 | R0959900 | COMPLETE COVER, LIGHT GREY | 1 |
| 37 | R0870100 | FLOAT | 1 | | | | |

CODICE **WR000426**

DESCRIZIONE: **W 675**



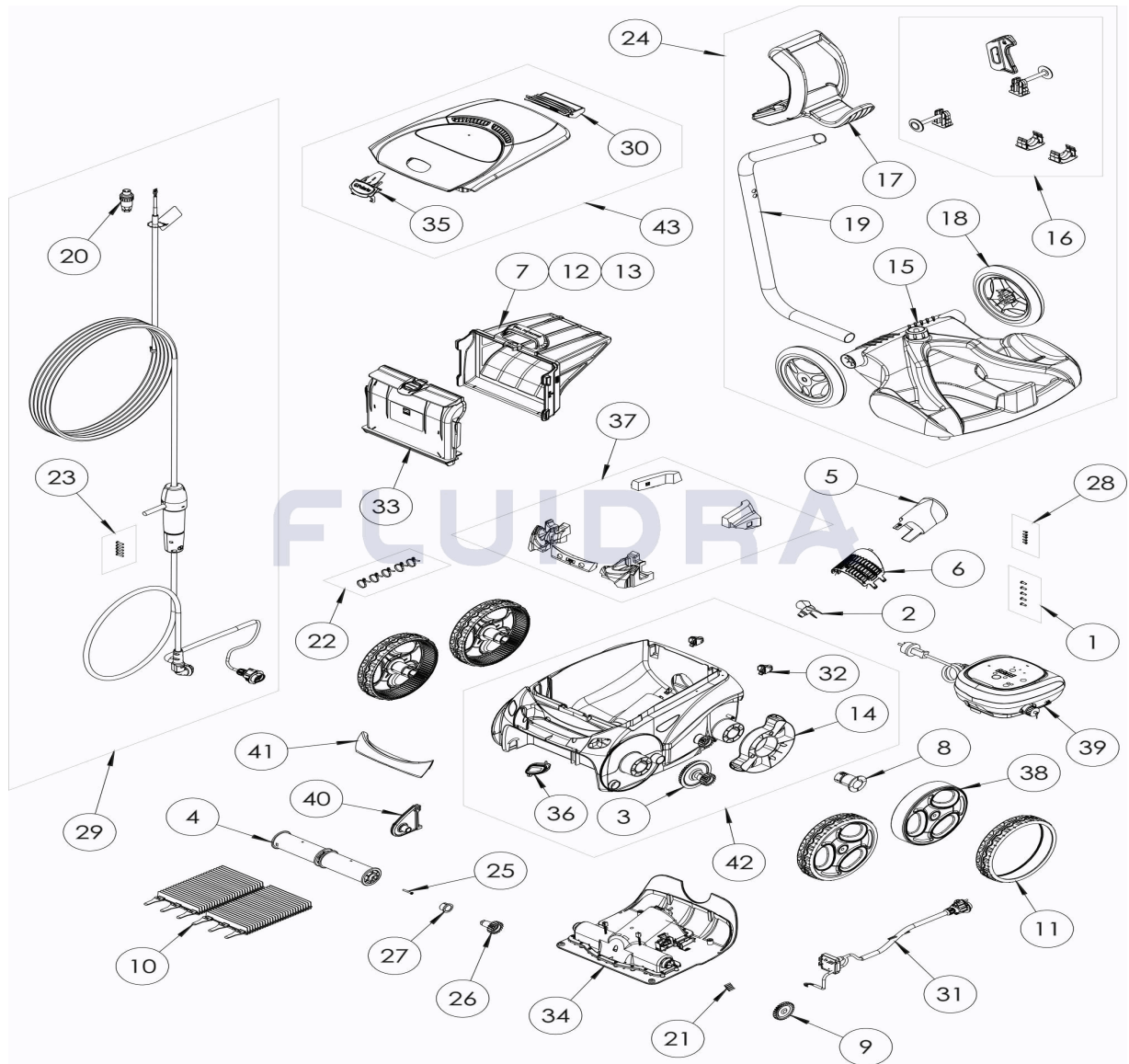
ITALIANO

| POS | CODICE | DESCRIZIONE | QUANTITA' | POS | CODICE | DESCRIZIONE | QUANTITA' |
|-----|----------|----------------------------------|-----------|-----|----------|---------------------------|-----------|
| 1 | R0516700 | VITE 4*12 MM (*5) | 1 | 16 | R0564900 | PEZZI ACCESSORI CARRELLO | 1 |
| 2 | R0517000 | ELICA | 1 | 17 | R0565000 | MANIGLIA CARRELLO | 1 |
| 3 | R0517200 | TRASMISSIONE | 4 | 18 | R0565100 | RUOTE CARRELLO (*2) | 1 |
| 4 | R0517400 | SUPPORTO SPAZZOLA (*2) | 1 | 19 | R0565200 | TUBO CARRELLO | 1 |
| 5 | R0517500 | GUIDA FLUSSO | 1 | 20 | R0565600 | CONNETTORE CAVO | 1 |
| 6 | R0517600 | GRIGLIA | 1 | 21 | R0567800 | COPIGLIA 3*16 MM (*5) | 1 |
| 7 | R0517800 | SERBATOIO GP SABBIA FINE | 1 | 22 | R0567900 | SET 5 PINZE PER FLOTTANTI | 1 |
| 8 | R0518500 | BOCCOLA CUSCINETTO RUOTA GP | 4 | 23 | R0608500 | VITE 4*16 MM A4 (*5) | 1 |
| 9 | R0518800 | KIT 2 PIGNONE 27 DENTI | 1 | 24 | R0609100 | CARRELLO V | 1 |
| 10 | R0528900 | PENNELLI GP (CONFEZIONE DA 2 UN) | 1 | 25 | R0638900 | VITE 4*25 MM (*5) | 1 |
| 11 | R0529300 | PNEUMATICO GP NERO GRANDE | 4 | 26 | R0639000 | KIT 2 PIGNONE 17 DENTI | 1 |
| 12 | R0535800 | SERBATOIO GP SABBIA FINE | 1 | 27 | R0639100 | CUSCINETTO ESTERIORE (*2) | 1 |
| 13 | R0535900 | SERBATOIO PER USO GENERALE GP | 1 | 28 | R0639200 | KIT 5 VITI 2.9*9.5 MM | 1 |

CODICE **WR000426**DESCRIZIONE: **W 675**

| | | | | | | | |
|----|----------|----------------------------------|---|----|----------|------------------------------------|---|
| 14 | R0540300 | PROTEZIONE RUOTA | 2 | 29 | R0726700 | CAVO GALLEGGIANTE SWIVEL 21M | 1 |
| 15 | R0564800 | BASE CARRELLO | 1 | 30 | R0863200 | GRUPPO GALLEGGIANTE POSTERIORE | 1 |
| 31 | R0863300 | BLOCCO DI SENSORI ASSEMBLE | 1 | 38 | R0911100 | RUOTE | 4 |
| 32 | R0864900 | PONTICELLO SPAZZOLA (*2) | 1 | 39 | R0913500 | QUADRO COMANDI TIPO 1 P | 1 |
| 33 | R0865100 | SUPPORTO FILTRO V | 1 | 40 | R0959500 | PONTICELLO SPAZZOLA, GRIGIO CHIARO | 1 |
| 34 | R0865400 | BLOCCO MOTORE TIPO 2 | 1 | 41 | R0959600 | MANIGLIA, BLU SCURO | 1 |
| 35 | R0867000 | BLOCCO IMPUGNATURA COPERCHIO POL | 1 | 42 | R0959700 | GUSCIO COMPLETO, GRIGIO CHIARO | 1 |
| 36 | R0867100 | FINESTRA SENSORI | 1 | 43 | R0959900 | COVER COMPLETO, GRIGIO CHIARO | 1 |
| 37 | R0870100 | FLOTTANTE | 1 | | | | |

CODE **WR000426**

 BESCHREIBUNG: **W 675**

DEUTSCH

| POS | CODE | BESCHREIBUNG | MENGE | POS | CODE | BESCHREIBUNG | MENGE |
|-----|----------|------------------------------------|-------|-----|----------|--|-------|
| 1 | R0516700 | SCHRAUBE 4 * 12 MM(SET mit 5 Stk.) | 1 | 16 | R0564900 | ZUBEHÖR CADDY | 1 |
| 2 | R0517000 | TURBINE | 1 | 17 | R0565000 | HANDGRIF CADDY | 1 |
| 3 | R0517200 | GETRIEBE | 4 | 18 | R0565100 | RÄDER CADDY (SET mit 2 Stk.) | 1 |
| 4 | R0517400 | BÜRSTENWALZE (SET mit 2 Stk.) | 1 | 19 | R0565200 | STANDROHR FÜR CADDY | 1 |
| 5 | R0517500 | STRÖMUNGSDÜSE | 1 | 20 | R0565600 | SCHWIMMKABEL STECKER (4 PTS) | 1 |
| 6 | R0517600 | SCHUTZGITTER | 1 | 21 | R0567800 | SPLINT FÜR KREUZAPPENANTRIEB (SET | 1 |
| 7 | R0517800 | FEINSAND GP TANK | 1 | 22 | R0567900 | KLEMME FÜR SCHWIMMKABEL (SET mit 5 Stk.) | 1 |
| 8 | R0518500 | RADLAGERBUCHSE GP | 4 | 23 | R0608500 | SCHRAUBE 4 * 16 MM, A4 (SET mit 5 Stk.) | 1 |
| 9 | R0518800 | ZAHNRAD 27 ZÄHNE (SET mit 2 Stk.) | 1 | 24 | R0609100 | CADDY V | 1 |
| 10 | R0528900 | GP BÜRSTEN (2ER PACK) | 1 | 25 | R0638900 | SCHRAUBE 4 * 25 MM, A2 (SET mit 5 Stk.) | 1 |
| 11 | R0529300 | GROSSER SCHWARZER GP-REIFEN | 4 | 26 | R0639000 | ZAHNRAD 17 ZÄHNE (SET mit 2 Stk.) | 1 |
| 12 | R0535800 | FEINSAND GP TANK | 1 | 27 | R0639100 | ZAHNRADBUCHSE (SET mit 2 Stk.) | 1 |
| 13 | R0535900 | TANK FÜR DEN ALLGEMEINEN GEBRAUCH | 1 | 28 | R0639200 | ZYLINDERKOPFSCHRAUBE 2,9 * 9,5 MM (SI | 1 |

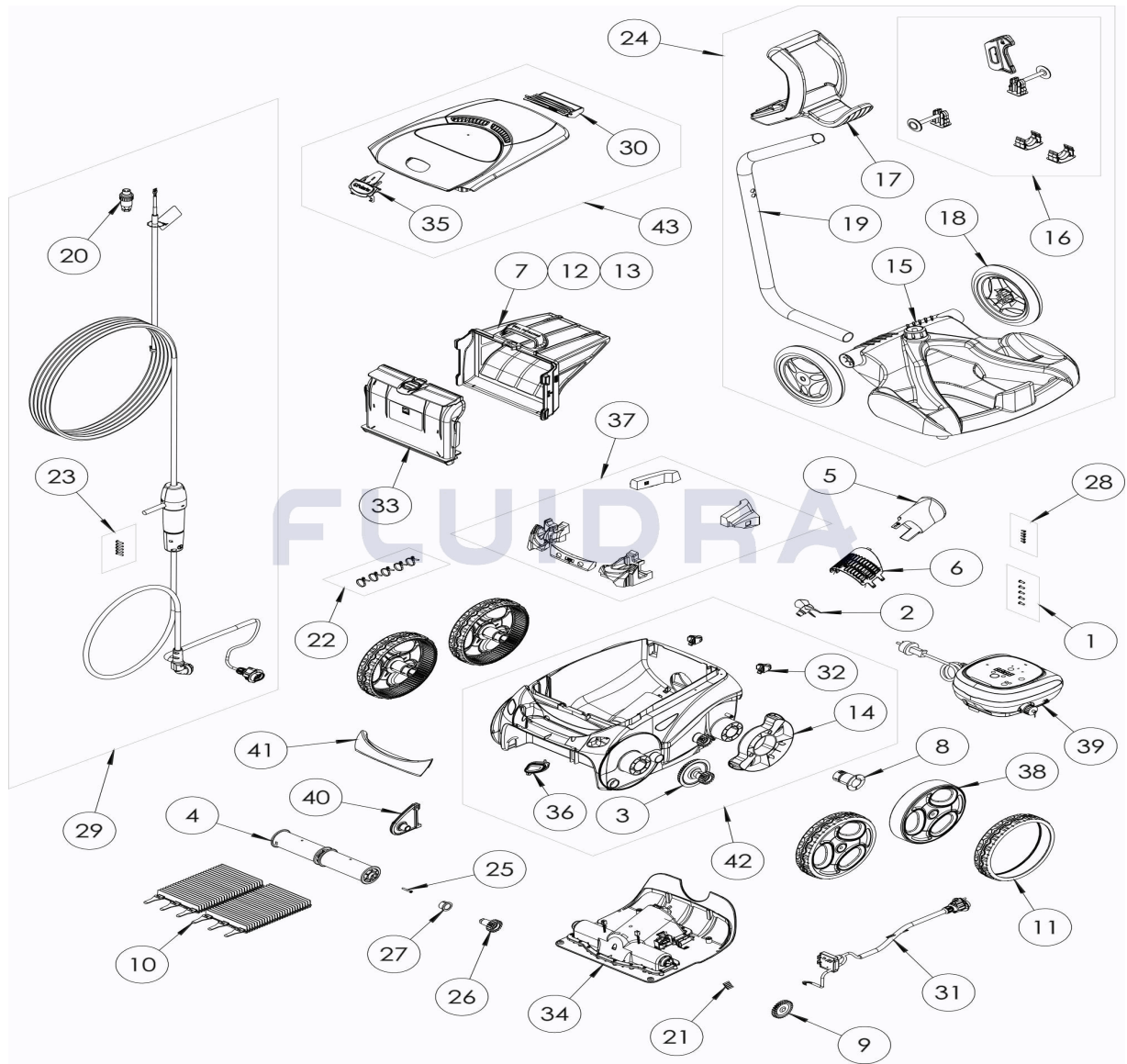
CODE **WR000426**

BESCHREIBUNG: **W 675**

| | | | | | | | |
|----|----------|------------------------------|---|----|----------|----------------------------------|---|
| 14 | R0540300 | RADSCHUTZBLENDE | 2 | 29 | R0726700 | SCHWIMMKABEL KOMPLETT SWIVEL 21M | 1 |
| 15 | R0564800 | BODENPLATTE CADDY | 1 | 30 | R0863200 | HECKFLOAT MONTAGE | 1 |
| 31 | R0863300 | BLOCK VON SENSOREN MONTIEREN | 1 | 38 | R0911100 | VORDERRÄDER | 4 |
| 32 | R0864900 | BÜRSTENANKER (2 im SET) | 1 | 39 | R0913500 | STEUERBOX TYP 1 P | 1 |
| 33 | R0865100 | DECKEL FILTERKORB | 1 | 40 | R0959500 | BÜRSTENANKER, HELLGRAU | 1 |
| 34 | R0865400 | MOTORBLOCK TYP 2 | 1 | 41 | R0959600 | GRIFFSTÜCK, DUNKELBLAU | 1 |
| 35 | R0867000 | GEHÄUSERIGEL POLARIS | 1 | 42 | R0959700 | GEHÄUSE, HELLGRAU | 1 |
| 36 | R0867100 | FENSTER SENSOREN | 1 | 43 | R0959900 | GEHÄUSEDECKEL KOMPLETT, HELLGRAU | 1 |
| 37 | R0870100 | SCHWIMMKÖRPER | 1 | | | | |

CODIGO **WR000426**

DESCRIÇÃO: **W 675**



PORTUGUES

| POS | CODIGO | DESCRIÇÃO | JANTIDADE | POS | CODIGO | DESCRIÇÃO | JANTIDADE |
|-----|----------|------------------------------------|-----------|-----|----------|------------------------------------|-----------|
| 1 | R0516700 | PARAFUSO 4*12 MM (Pack 5 UN) | 1 | 16 | R0564900 | KIT ACCESÓRIOS CARRO | 1 |
| 2 | R0517000 | HÉLICE | 1 | 17 | R0565000 | PEGA CARRO DE TRANSPORTE | 1 |
| 3 | R0517200 | CJTO. TRANSMISSÃO | 4 | 18 | R0565100 | RODAS CARRO DE TRANSPORTE | 1 |
| 4 | R0517400 | ROLO PORTA-ESCOVAS (Pack 2 UN) | 1 | 19 | R0565200 | TUBO CARRO DE TRANSPORTE | 1 |
| 5 | R0517500 | CANALIZADOR DE FLUXO | 1 | 20 | R0565600 | LIGAÇÃO DE CABO 4 PINS | 1 |
| 6 | R0517600 | TELA PROTECÇÃO | 1 | 21 | R0567800 | CLIP FIXADOR 3*16 MM (Pack 5 UN) | 1 |
| 7 | R0517800 | FINE SAND GP TANK | 1 | 22 | R0567900 | ABRACADEIRA CABO FLUTUANTE | 1 |
| 8 | R0518500 | BUCHA DE ROLAMENTO DE RODAS GP | 4 | 23 | R0608500 | PARAFUSO 4*16 MM A4 (Pack 5 UN) | 1 |
| 9 | R0518800 | RODA DENTADA 27 DENTES (Pack 2 UN) | 1 | 24 | R0609100 | CARRO V | 1 |
| 10 | R0528900 | ESCOVAS GP (EMBALAGEM DE 2 UN) | 1 | 25 | R0638900 | PARAFUSO 4*25 MM (Pack 5 UN) | 1 |
| 11 | R0529300 | BIG BLACK GP PNEU | 4 | 26 | R0639000 | RODA DENTADA 17 DENTES (Pack 2 UN) | 1 |
| 12 | R0535800 | FINE SAND GP TANK | 1 | 27 | R0639100 | TAMPA EXTERIOR (Pack 2 UN) | 1 |
| 13 | R0535900 | TANQUE PARA USO GERAL GP | 1 | 28 | R0639200 | PARAFUSO 2.9*9.5 MM (Pack 5 UN) | 1 |

CODIGO **WR000426**DESCRIÇÃO: **W 675**

| | | | | | | | |
|----|----------|----------------------------|---|----|----------|---------------------------------|---|
| 14 | R0540300 | PROTETOR DA RODA | 2 | 29 | R0726700 | CABO FLUTUANTE SWIVEL 21M | 1 |
| 15 | R0564800 | BASE CARRO DE TRANSPORTE | 1 | 30 | R0863200 | MONTAGEM DO FLUTUANTE TRASEIRO | 1 |
| 31 | R0863300 | BLOCO DE SENSORES MONTADOS | 1 | 38 | R0911100 | RODAS | 4 |
| 32 | R0864900 | CLIP FIXAÇÃO ROLOS (*2) | 1 | 39 | R0913500 | UNIDADE DE CONTROLO TIPO 1 P | 1 |
| 33 | R0865100 | SUPORTE FILTRO | 1 | 40 | R0959500 | CLIP FIXAÇÃO ROLOS, CINZA CLARO | 1 |
| 34 | R0865400 | BLOCO MOTOR TIPO 2 | 1 | 41 | R0959600 | PEGA, AZUL-ESCURO | 1 |
| 35 | R0867000 | FECHO DA TAMPÁ POLARIS | 1 | 42 | R0959700 | ESTRUTURA, CINZA CLARO | 1 |
| 36 | R0867100 | JANELA DE SENSORES | 1 | 43 | R0959900 | TAMPÁ COMPLETA, CINZA CLARO | 1 |
| 37 | R0870100 | FLUTUADOR | 1 | | | | |