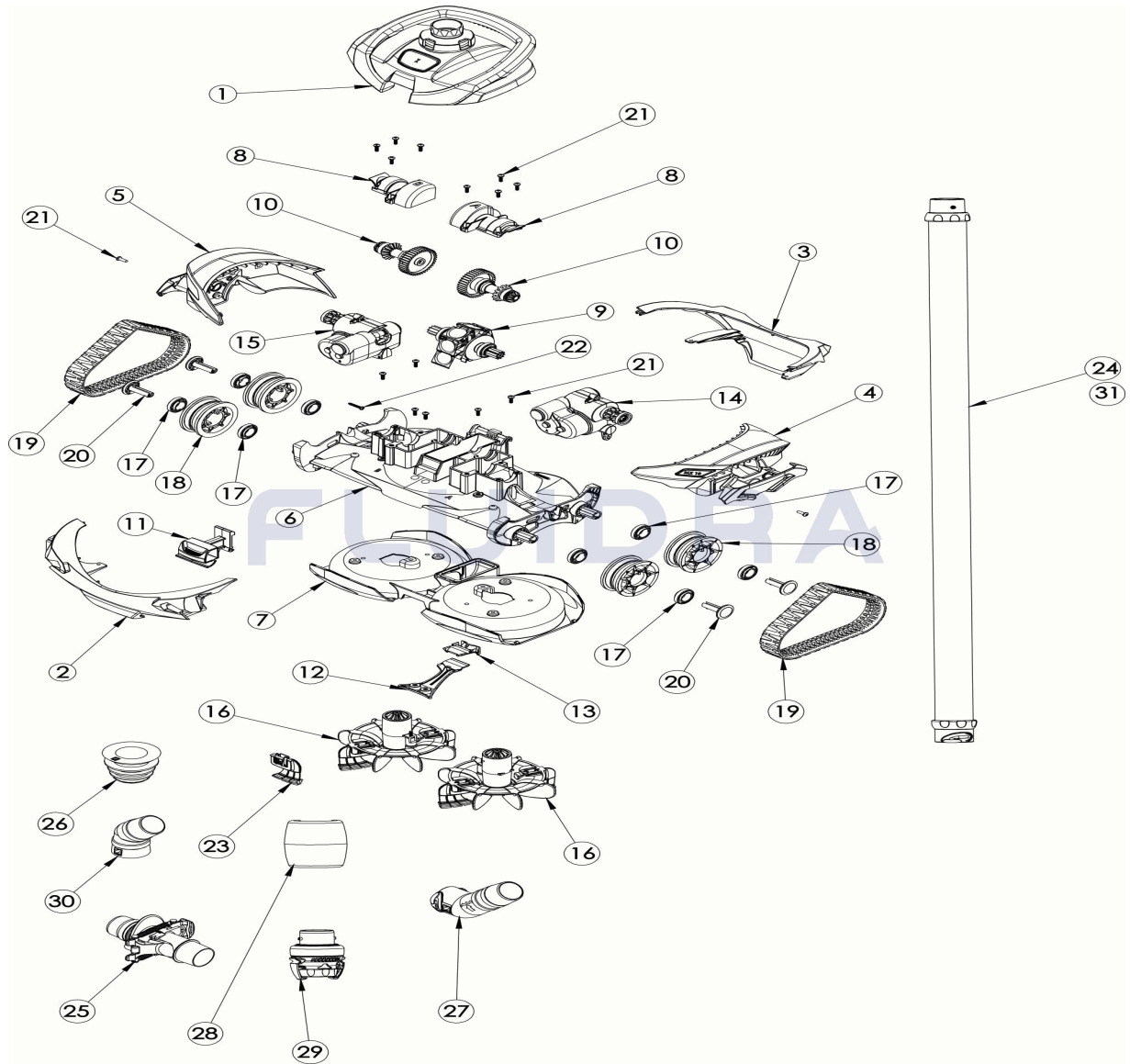


CODIGO **WS000075**

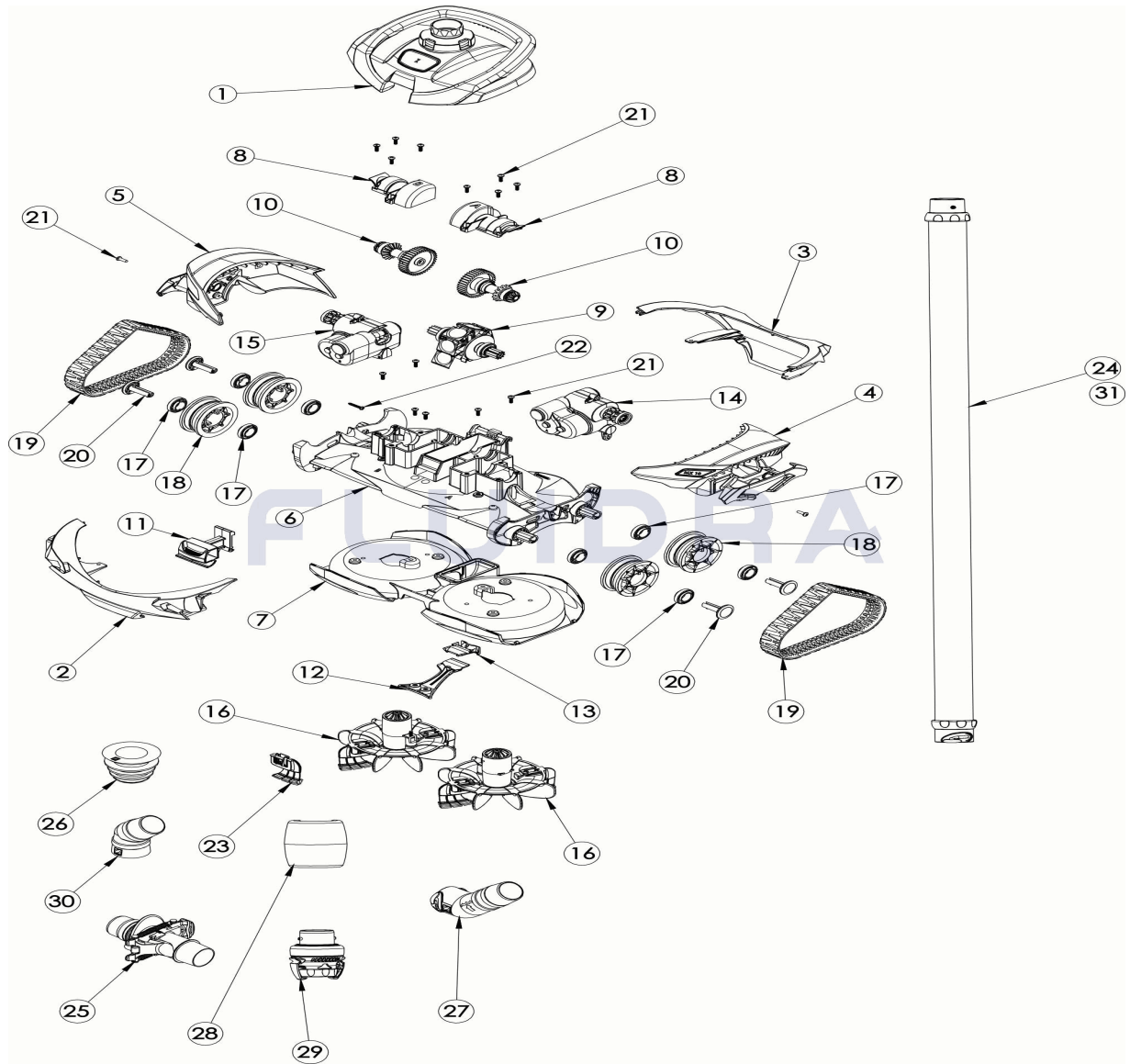
 DESCRIPCION: **MX10**

ESPAÑOL

POS	CODIGO	DESCRIPCION	CANTIDAD	POS	CODIGO	DESCRIPCION	CANTIDAD
1	R1010300	CONJUNTO GIRATORIO SUPERIOR DEL CUERPO	1	16	R0937500	SCRUBBER CICLÓNICO, NEGRO/GRIS, KIT	1
2	R1010400	PANEL FRONTAL DEL CUERPO, MARINA, INCLINADO	1	17	W79034	COJINETE, (RUEDA Y MOTOR)	1
3	R1010500	PANEL TRASERO DEL CUERPO, MARINA, INCLINADO	1	18	R1011200	RUEDA MX10 (CANTIDAD 1), MX10	1
4	R1010600	PANEL LATERAL IZQUIERDO DE CUERPO, MARINA, INCLINADO	1	19	R1011300	PK TRACK MX10 (PAQUETE DE 2), MX10	1
5	R1010700	PANEL DEL LADO DERECHO DEL CUERPO, MARINA, INCLINADO	1	20	R1011400	PIN DE RUEDA PLATEADO (CANTIDAD 1), INCLINADO	1
6	R0971500	ASAMBLEA DEL CHASIS, PLATA	1	21	W79035	TORNILLO M4X12MM, PHILLIPS #2 CABEZA	1
7	R1011500	BANDEJA DEL CUERPO CLARO, MX10	1	22	W79036	TORNILLO, FORMACIÓN DE LA RANURA, #2	1
8	R1012000	CUBIERTAS DE ACTUALIZACIÓN DE LA CARCASA	4	23	R1011800	CEPILLO MX SILVER (CANTIDAD 4), MX10	4
9	R1010800	CONJUNTO DEL MOTOR, MX10	1	24	W78055	JUEGO DE 6 TUBOS DE UN METRO TWIST	1
10	R1011900	EJE DE TRANSMISIÓN CON ENSAMBLAJE	1	25	W60055P	VÁLVULA DE REGULACIÓN AUTOMÁTICA DE PRESIÓN	1
11	R1010900	CUBRA DE PESTILLO, PLATA, MX10	1	26	W69657P	ADAPTADOR CÓNICO	1
12	R1011600	ENSAMBLAJE DE ENTRADA MX10	1	27	W73011P	CODO CONECTOR ACCESORIO 45 CON TV	1
13	R1011700	REDUCTOR DE ENTRADA MX10	1	28	W79032P	FLOTADOR DE MANGUERA	1

CODIGO **WS000075**DESCRIPCION: **MX10**

14	R1011000	DISPOSITIVO DE CONTROL DE DIRECCIÓN	29	60001100	CONECTOR RÁPIDO (AZUL)
15	R1011100	DISPOSITIVO DE CONTROL DE DIRECCIÓN	30	W70244	CODO CONECTOR DE 45 GRADOS
31	A0164500	MANGUERA DE BLOQUEO DE GIRO - 1 ME	N/S	W79033P	CONECTOR RÁPIDO (AZUL)

CODE **WS000075**

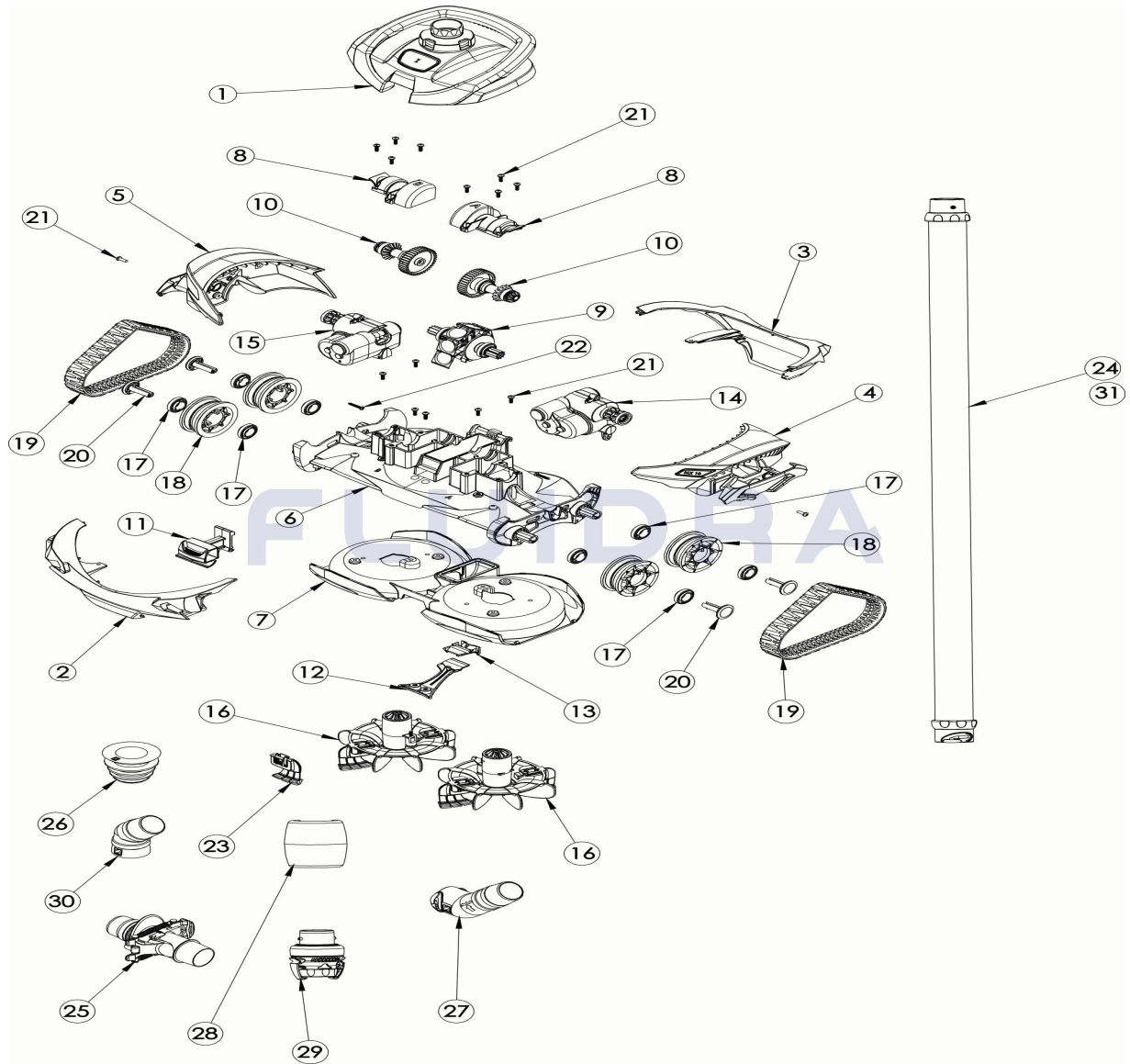
 DESCRIPTION: **MX10**

FRANCAIS

POS	CODE	DESCRIPTION	QUANTITE	POS	CODE	DESCRIPTION	QUANTITE
1	R1010300	ENSEMBLE PIVOTANT SUR LE CORPS, MA		16	R0937500	ÉPOUDEUR CYCLONIQUE, NOIR / GRIS, KI	
2	R1010400	PANNEAU AVANT DU CORPS, MARINE, MX		17	W79034	ROULEMENT (ROUE ET MOTEUR)	
3	R1010500	PANNEAU ARRIÈRE DU CORPS, MARINE, M		18	R1011200	ROUE MX10 (QTÉ 1), MX10	
4	R1010600	PANNEAU LATÉRAL GAUCHE DU CORPS A		19	R1011300	PK TRACK MX10 (PACK DE 2), MX10	
5	R1010700	PANNEAU LATÉRAL DROIT CORPOREL AVI		20	R1011400	PIN DE ROUE ARGENT (QTÉ 1), MX10	
6	R0971500	ASSEMBLAGE DU CHÂSSIS, ARGENT		21	W79035	VIS M4X12 MM, PHILLIPS #2 TÊTE PLATE	
7	R1011500	CLAI DE BAC À CORPS, MX10		22	W79036	VIS, AUTO FOREUSE, #6-18 7/8IN TYPE A, F	
8	R1012000	COUVERTURES DE MISE À JOUR DU LOGI		23	R1011800	BRUSH SCURBBER MX SILVER (QTÉ 4), MX	
9	R1010800	ENSEMBLE DU MOTEUR, MX10		24	W78055	JEU DE 6 SECTIONS DE TUYAUX DE 1 MÈT	
10	R1011900	ARBRE D'ENTRAÎNEMENT AVEC ENSEMBL		25	W60055P	VANNE DE RÉGLAGE AUTOMATIQUE DU DI	
11	R1010900	COUVERTURE VERROUILLE, ARGENT, MX		26	W69657P	ADAPTATEUR CONIQUE	
12	R1011600	ASSEMBLAGE D'ENTRÉE MX10		27	W73011P	COUDE TWIST LOCK 45 DEGRÉS ALLONGÉ	
13	R1011700	RÉDUCTEUR D'ENTRÉE MX10		28	W79032P	FLOTTEUR DE TUYAU	

CODE **WS000075**DESCRIPTION: **MX10**

14	R1011000	DISPOSITIF DE COMMANDE DE DIRECTIOI	29	60001100	RÉGULATEUR DE DÉBIT
15	R1011100	DISPOSITIF DE COMMANDE DE DIRECTIOI	30	W70244	COUDE 45 DEGRÉS
31	A0164500	TUYAU DE VERROUILLAGE DE TORSION -	N/S	W79033P	CONNECTEUR RAPIDE BLEU

CODE **WS000075**

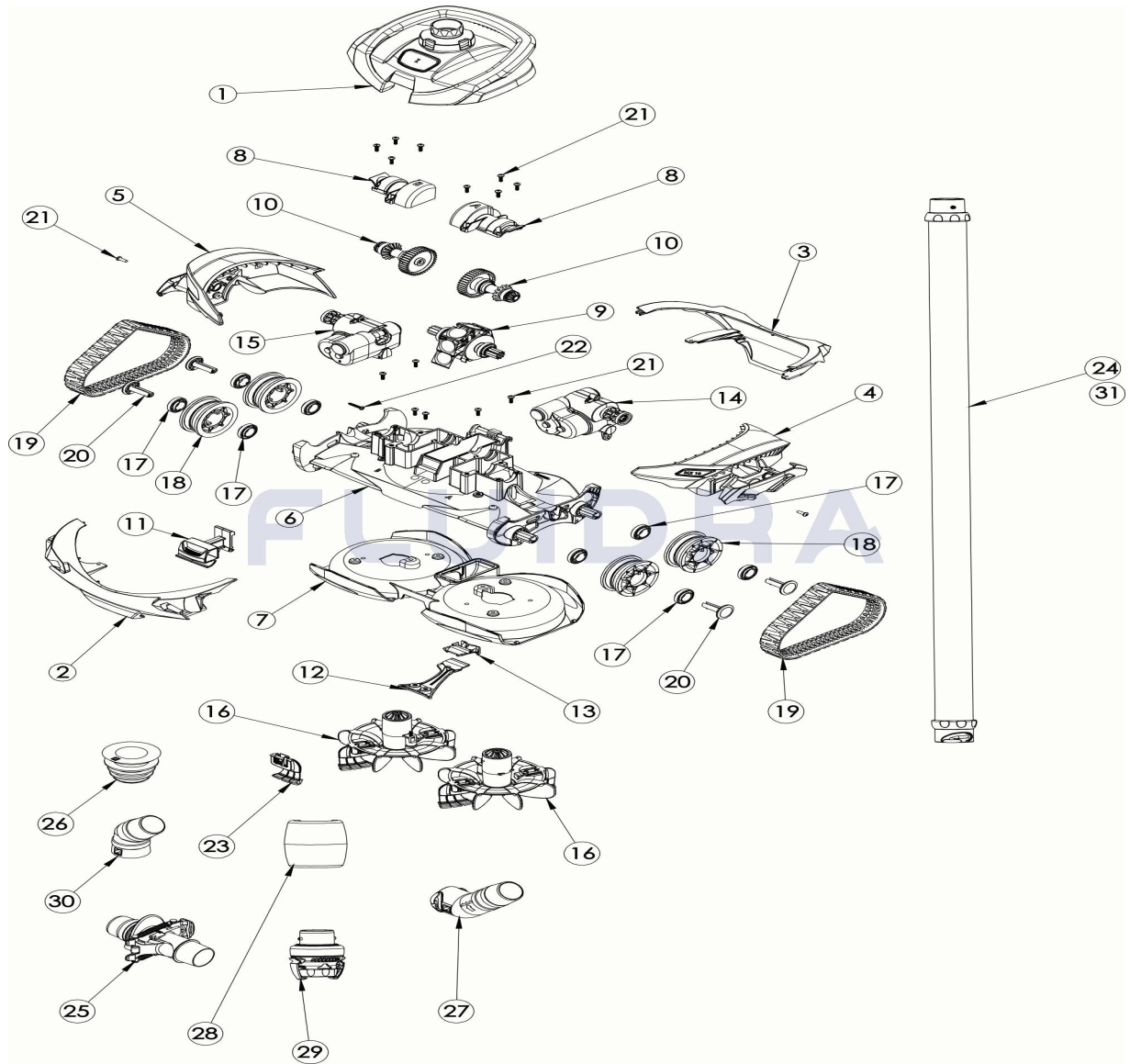
 DESCRIPTION: **MX10**

ENGLISH

POS	CODE	DESCRIPTION	QUANTITY	POS	CODE	DESCRIPTION	QUANTITY
1	R1010300	BODY TOP SWIVEL ASSEMBLY, NAVY, MX1		16	R0937500	CYCLONIC SCRUBBER, BLACK/GREY, KIT (
2	R1010400	BODY FRONT PANEL, NAVY, MX10		17	W79034	BEARING (WHEEL & ENGINE)	
3	R1010500	BODY REAR PANEL, NAVY, MX10		18	R1011200	WHEEL MX10 (QTY 1), MX10	
4	R1010600	BODY LEFT SIDE PANEL W/TRACK GUARD		19	R1011300	PK TRACK MX10 (PACK OF 2), MX10	
5	R1010700	BODY RIGHT SIDE PANEL W/TRACK GUAR		20	R1011400	WHEEL PIN SILVER (QTY 1), MX10	
6	R0971500	CHASSIS ASSEMBLY, SILVER		21	W79035	SCREW M4X12MM PHILLIPS #2 PAN HEAD	
7	R1011500	BODY TRAY CLEAR, MX10		22	W79036	SCREW THREAD FORMING #6-18 7/8IN TYF	
8	R1012000	GEAR HOUSING UPDATE COVERS (A & B),		23	R1011800	BRUSH SCRUBBER MX SILVER (QTY 4), MX	
9	R1010800	ENGINE ASSEMBLY, MX10		24	W78055	SET OF 6 X 1 M TWIST LOCK HOSES	
10	R1011900	DRIVE SHAFT W/WASHER ASSEMBLY (QT)		25	W60055P	AUTOMATIC FLOW RATE ADJUSTMENT VAL	
11	R1010900	COVER LATCH, SILVER, MX10		26	W69657P	CONICAL ADAPTOR	
12	R1011600	INLET ASSEMBLY MX10		27	W73011P	TWIST-LOCK 45 DEG ELBOW EXTENDED	
13	R1011700	INLET REDUCER MX10		28	W79032P	HOSE FLOAT	

CODE **WS000075**DESCRIPTION: **MX10**

14	R1011000	DIRECTION CONTROL DEVICE, V2, SIDE A.	29	60001100	FLOW REGULATOR VALVE
15	R1011100	DIRECTION CONTROL DEVICE, V2, SIDE B	30	W70244	45-DEGREE ELBOW
31	A0164500	TWIST LOCK HOSE - 1 METER, BLUE/GRA\	N/S	W79033P	QUICK CONNECTOR, BLUE

CODICE **WS000075**

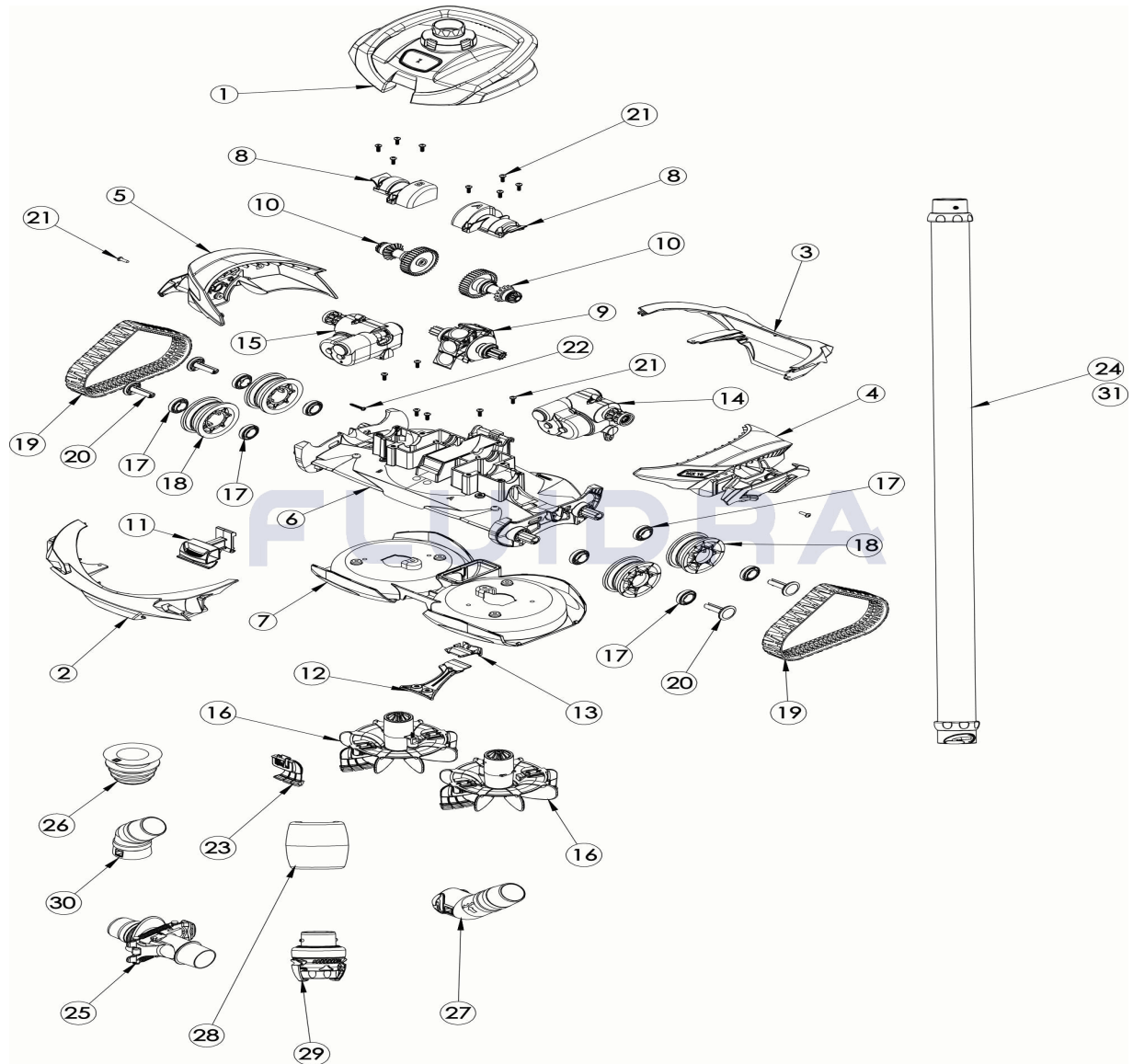
 DESCRIZIONE: **MX10**

ITALIANO

POS	CODICE	DESCRIZIONE	QUANTITA'	POS	CODICE	DESCRIZIONE	QUANTITA'
1	R1010300	GRUPPO GIREVOLE TOP CORPO, BLU, MX		16	R0937500	SCRUBBER CICLONICO, NERO/GRIGIO, KIT	
2	R1010400	PANNELLO ANTERIORE DEL CORPO, MAR		17	W79034	CUSCINETTO A SFERA	
3	R1010500	PANNELLO POSTERIORE DEL CORPO, MA		18	R1011200	RUOTA MX10 (QTY 1), MX10	
4	R1010600	PANNELLO LATERALE SINISTRO DEL COR		19	R1011300	PK TRACK MX10 (PACCHETTO DI 2), MX10	
5	R1010700	PANNELLO LATERALE DESTRO DEL CORP		20	R1011400	ARGENTO PER PERNO RUOTA (QTY 1), MX	
6	R0971500	ASSEMBLEA DEL TELAIO, ARGENTO		21	W79035	VITE M4X12 MM	
7	R1011500	BODY TRAY CLEAR, MX10		22	W79036	VITE AUTOPERFORANTE #6-18 7/8	
8	R1012000	COPERCHI DI AGGIORNAMENTO DEGLI AL		23	R1011800	BRUSH SCRUBBER MX SILVER (QTY 4), MX	
9	R1010800	GRUPPO MOTORE, MX10		24	W78055	KIT 6 TUBAZIONI TWIST LOCK 1M	
10	R1011900	ALBERO DI TRASMISSIONE CON GRUPPO		25	W60055P	VALV.REGOLAZIONE AUTOM.PORTATA	
11	R1010900	COPERTINA, ARGENTO, MX10		26	W69657P	ADATTATORE CONICO	
12	R1011600	ASSEMBLAGGIO DI INGRESSO MX10		27	W73011P	CURVA GOMITO TWIST LOCK 45°	
13	R1011700	RIDUTTORE DI INGRESSO MX10		28	W79032P	GALLEGGIANTE DEL TUBO	

CODICE **WS000075**DESCRIZIONE: **MX10**

14	R1011000	DISPOSITIVO DI CONTROLLO DELLA DIRE	29	60001100	CONNETTORE RAPIDO (BLU)
15	R1011100	DISPOSITIVO DI CONTROLLO DELLA DIRE	30	W70244	CURVA A GOMITO 45°
31	A0164500	TWIST LOCK HOSE - 1 METRO, BLU/GRIGI	N/S	W79033P	RACCORDO RAPIDO BLU

CODE **WS000075**

 BESCHREIBUNG: **MX10**


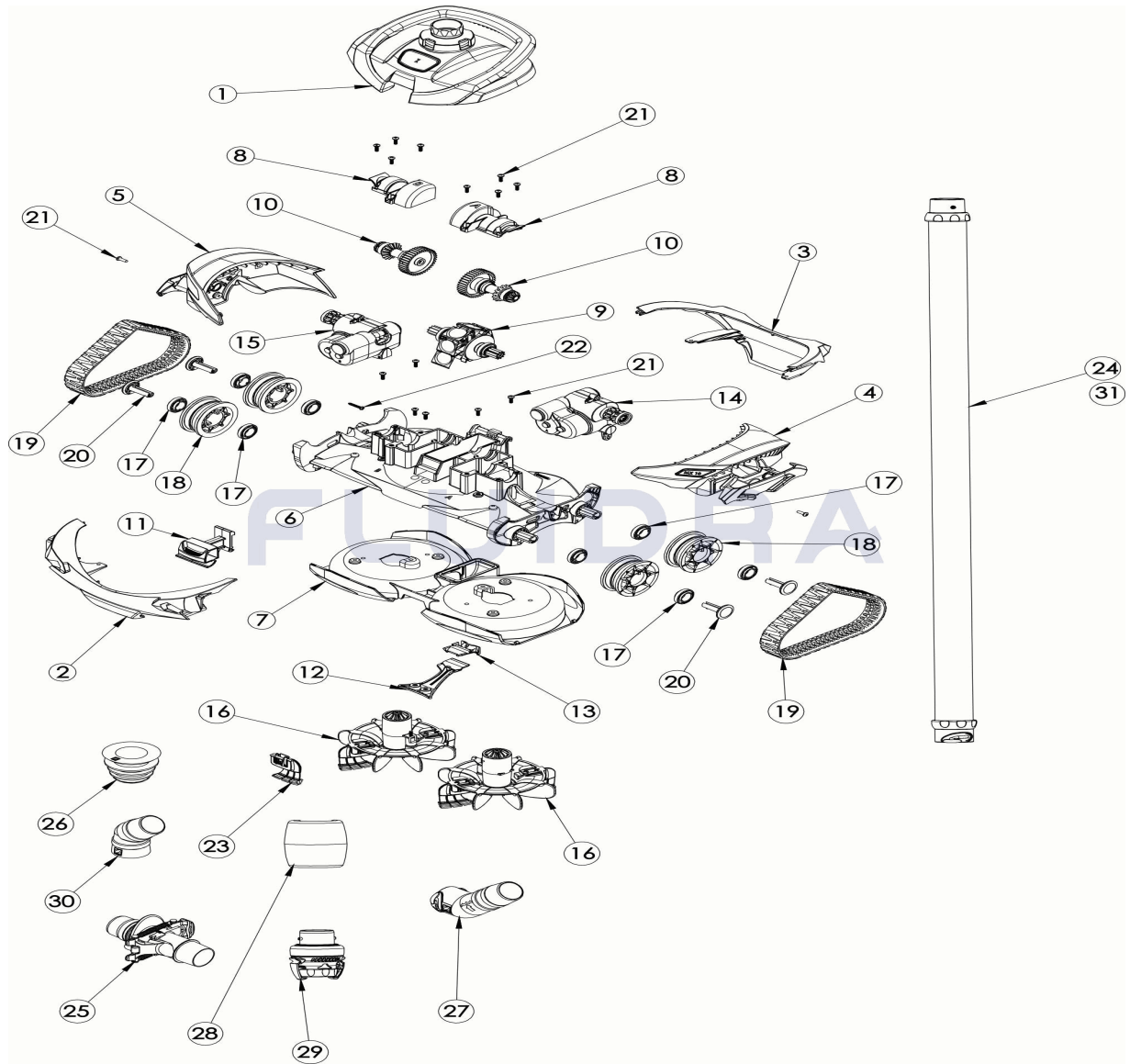
DEUTSCH

POS	CODE	BESCHREIBUNG	MENGE	POS	CODE	BESCHREIBUNG	MENGE
1	R1010300	BODY TOP DREHBAUGRUPPE, MARINE, M		16	R0937500	ZYKLONSCHRUBBER, SCHWARZ/GRAU, KI	
2	R1010400	KÖRPERFRONTPLATTE, MARINE, MX10		17	W79034	KUGELLAGER	
3	R1010500	KÖRPERRÜCKSEITE, MARINE, MX10		18	R1011200	RAD MX10 (QTY 1), MX10	
4	R1010600	LINKSKÖRPER MIT SPURENSCHUTZ, MAR		19	R1011300	PK -SPUR MX10 (PACK VON 2), MX10	
5	R1010700	BODY RIGHT SIDE PANEL W/TRACK GUAR		20	R1011400	RADSTIFT SILBER (QTY 1), MX10	
6	R0971500	CHASSIS -BAUGRUPPE, SILBER		21	W79035	SCREWS, M4X12MM	
7	R1011500	KÖRPERSCHALE KLAR, MX10		22	W79036	SCREWS, TREAD FORMING	
8	R1012000	GETRIEBEHÄUSER -UPDATE -COVERS (A		23	R1011800	PINSEL SCRUBBER MX SILBER (QTY 4), M	
9	R1010800	MOTORBAUGRUPPE, MX10		24	W78055	SCHLAUCHPAKET (6 X 1M STÜCK)	
10	R1011900	ANTRIEBSWELLE W/WASCHMASCHINE (Q		25	W60055P	STEUERVENTIL-DURCHFLUSSMENGE	
11	R1010900	DECKELRIEGEL, SILBER, MX10		26	W69657P	ANSCHLUSSSTÜCK, KONISCH F.	
12	R1011600	EINLASSBAUGRUPPE MX10		27	W73011P	BOGENSTÜCK 45 GRAD F. MX8	
13	R1011700	EINLASS REDUZIERER MX10		28	W79032P	AUFTRIEBSKÖRPER F. MX8	

CODE **WS000075**BESCHREIBUNG: **MX10**

14	R1011000	RICHTUNGSSTEUERGERÄT, V2, SEITE A, I	29	60001100	SCHNELLANSCHLUSS (BLAU)
15	R1011100	RICHTUNGSSTEUERGERÄT, V2, SEITE B, I	30	W70244	BOGENSTÜCK 45 GRAD
31	A0164500	TWIST LOCK SCHLAUCH - 1 METER, BLAU	N/S	W79033P	SCHLAUCHADAPTER

CODIGO **WS000075**

 DESCRIÇÃO: **MX10**


PORTUGUES

POS	CODIGO	DESCRIÇÃO	JANTIDADE	POS	CODIGO	DESCRIÇÃO	JANTIDADE
1	R1010300	MONTAGEM GIRATÓRIA SUPERIOR DO CC		16	R0937500	PALAVLHADO CICLÔNICO, PRETO/CINZA,	
2	R1010400	PAINEL FRONTAL DO CORPO, MARINHA, M		17	W79034	ROLAMENTO DE ESFERAS	
3	R1010500	PAINEL TRASEIRO CORPORAL, MARINHA,		18	R1011200	RODA MX10 (QTD 1), MX10	
4	R1010600	PAINEL LATERAL ESQUERDO DO CORPO (19	R1011300	PK TRACK MX10 (PACOTE DE 2), MX10	
5	R1010700	PAINEL LATERAL DIREITO DO CORPO COM		20	R1011400	PINO DA RODA PRATA (QTD 1), MX10	
6	R0971500	ASSEMBLÉIA DO CHASSI, PRATA		21	W79035	PARAFUSO#6-18 7/8 TIPOA PHI.#2	
7	R1011500	BANDEJA CORPORAL CLARO, MX10		22	W79036	PARAFUSO MX8 CABEÇA CILÍNDRICA	
8	R1012000	TAMPAS DE ATUALIZAÇÃO DA CAIXA DE E		23	R1011800	PINCEL MX SILVER (QTTY 4), MX10	
9	R1010800	MONTAGEM DO MOTOR, MX10		24	W78055	PACK 6 MANGUEIRAS 1M TWISTLOCK	
10	R1011900	EIXO DE ACIONAMENTO COM MONTAGEM		25	W60055P	VÁLVULA REGULAÇÃO AUTO CAUDAL	
11	R1010900	TRAVA DE CAPA, PRATA, MX10		26	W69657P	ADAPTADOR CÓNICO	
12	R1011600	ASSEMBLÉIA DE ENTRADA MX10		27	W73011P	COTOVELO CONECTOR DE 45 GRAUS	
13	R1011700	REDUTOR DE ENTRADA MX10		28	W79032P	FLUTUADOR MANGUEIRA MX8	

CODIGO **WS000075**DESCRIÇÃO: **MX10**

14	R1011000	DISPOSITIVO DE CONTROLE DE DIREÇÃO	29	60001100	VÁLVULA REGULADORA DE CAUDAL (AZUL)
15	R1011100	DISPOSITIVO DE CONTROLE DE DIREÇÃO	30	W70244	COTOVELO CONECTOR DE 45 GRAUS
31	A0164500	TWIST LOCK MANGUEIRA - 1 METRO, AZU	N/S	W79033P	CONECTOR RÁPIDO (AZUL)