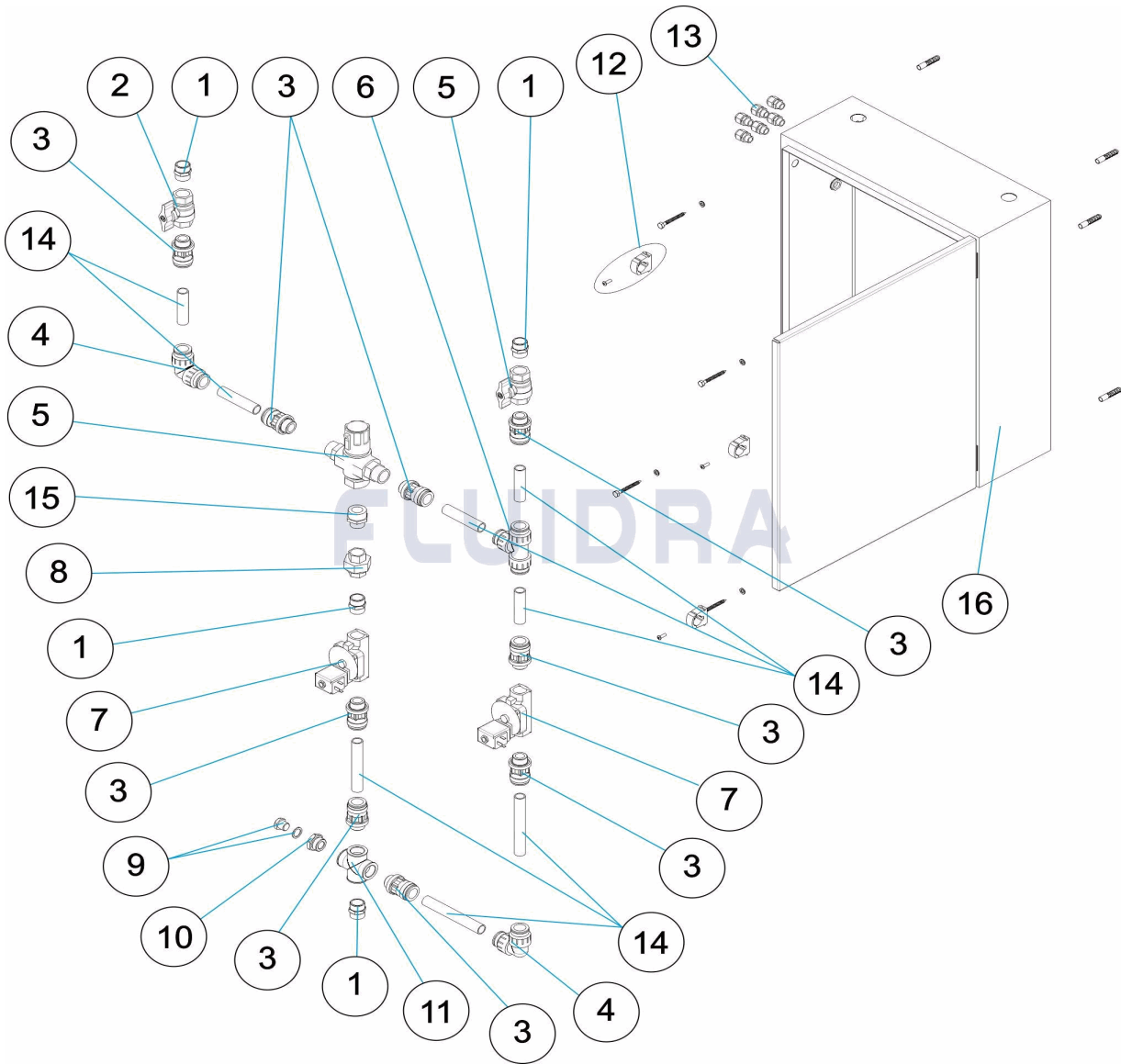


CODIGO **49898**

DESCRIPCION: **ARMARIO HIDRAULICO 1 SALIDA**

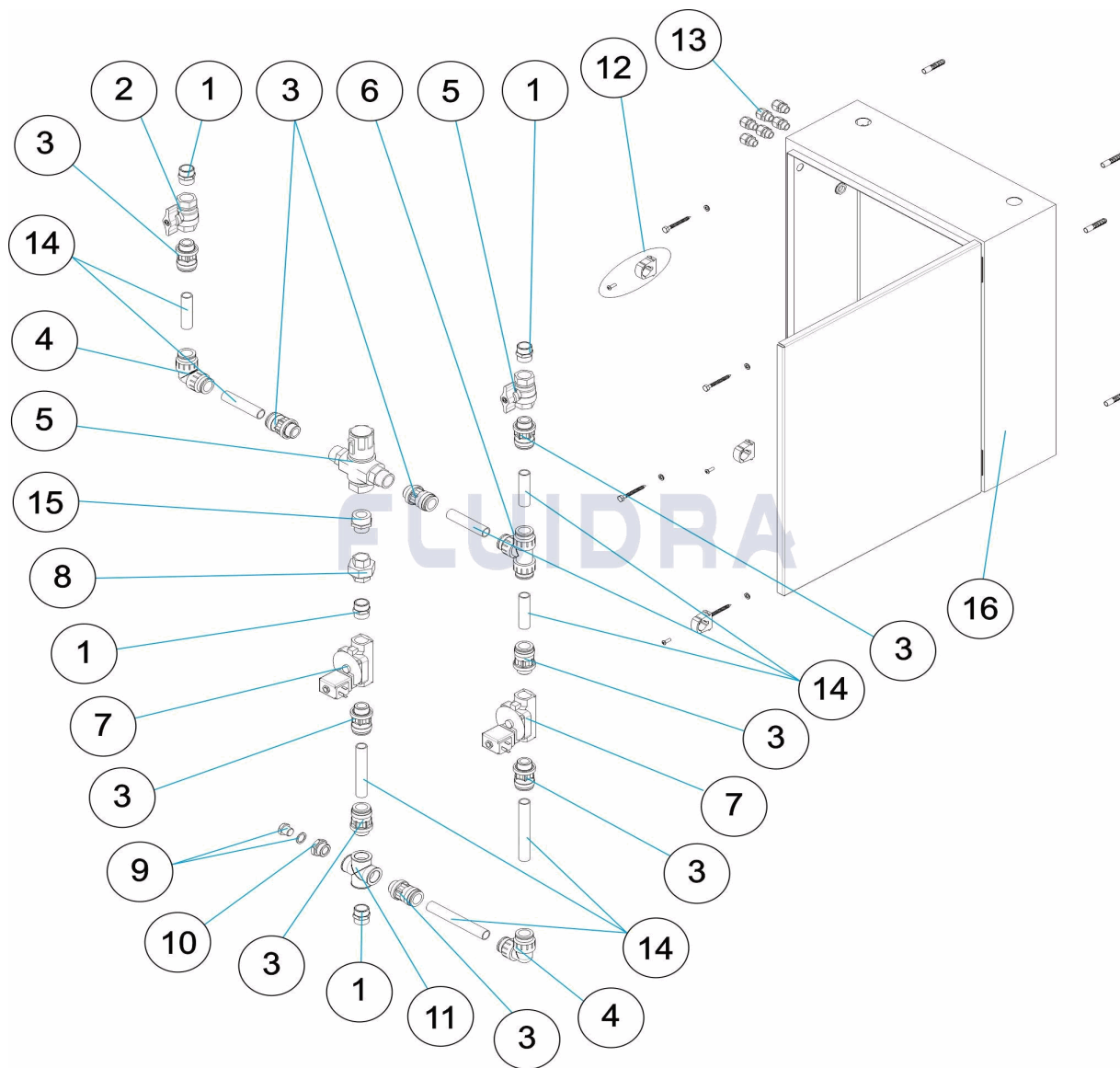


**ESPAÑOL**

| POS | CODIGO     | DESCRIPCION               | CANTIDAD | POS | CODIGO     | DESCRIPCION                         | CANTIDAD |
|-----|------------|---------------------------|----------|-----|------------|-------------------------------------|----------|
| 1   | 4401040112 | MACHON M-M 3/4"           |          | 9   | 4405020507 | TAPON PURGA PREFILTRO               |          |
| 2   | 4401040113 | VALVULA DE BOLA H-H 1/2"  |          | 10  | 4401040120 | REDUCTOR 1/4 - 3/8"                 |          |
| 3   | 4401040114 | ADAPTADOR MACHO D.22-3/4" |          | 11  | 4401040121 | CRUCETA 1/2" H.W BS "               |          |
| 4   | 4401040115 | CODO D.22                 |          | 12  | 4401040122 | CLIP D.22                           |          |
| 5   | 4401040116 | VALVULA TERMOSTATICA      |          | 13  | 4401040123 | CJTO PRENSAESTOPAS PG9              |          |
| 6   | 4401040117 | TE D.22                   |          | 14  | 4401040125 | TUBO MULTICAPA B-PEX 22X3 (1 METRO) |          |
| 7   | 4401040118 | ELECTROVALVULA 3/4"       |          | 15  | 4401040124 | MACHON REDUCCION 1-3/4"             |          |
| 8   | 4401040119 | ENLACE 3 PIEZAS 1/2"      |          | 16  | 41259R1100 | ARMARIO HIDRAULICO                  |          |

CODE 49898

DESCRIPTION: BOÎTIER HYDRAULIQUE 1 SORTIE

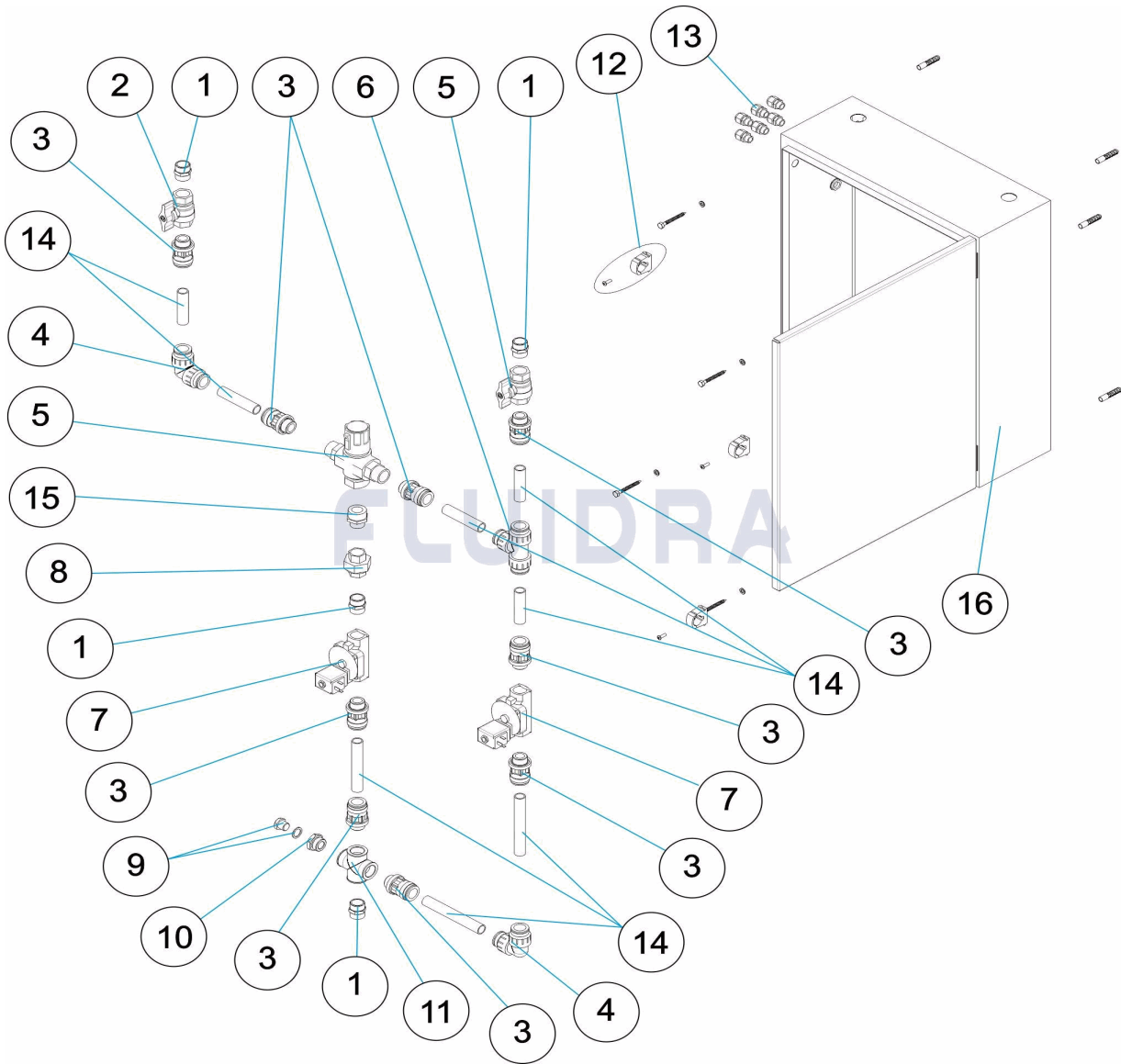


FRANCAIS

| POS | CODE       | DESCRIPTION               | QUANTITE | POS | CODE       | DESCRIPTION                          | QUANTITE |
|-----|------------|---------------------------|----------|-----|------------|--------------------------------------|----------|
| 1   | 4401040112 | MANCHON M-M 3/4"          |          | 9   | 4405020507 | BOUCHON PURGE PREFILTRE              |          |
| 2   | 4401040113 | SOUPAPE À BILLE H-H 3/4"  |          | 10  | 4401040120 | RÉDUCTEUR 3/4 - 3/8"                 |          |
| 3   | 4401040114 | ADAPTATEUR MÂLE D.22-3/4" |          | 11  | 4401040121 | RACCORD CROIX 3/4" H.W BS "          |          |
| 4   | 4401040115 | COUDE D.22                |          | 12  | 4401040122 | CLIP D.22                            |          |
| 5   | 4401040116 | VANNE THERMOSTATIQUE      |          | 13  | 4401040123 | ENS. PRESSE-ÉTOUPES PG9              |          |
| 6   | 4401040117 | TE D.22                   |          | 14  | 4401040125 | TUBO MULTISTRATO B-PEX 22X3 (1 METRC |          |
| 7   | 4401040118 | ELECTROVANNE 3/4"         |          | 15  | 4401040124 | MACHON REDUIT TARAUDER FF. 1-3/4"    |          |
| 8   | 4401040119 | RACCORD 3 PIÈCES 3/4"     |          | 16  | 41259R1100 | BOÎTIER HYDRAULIQUE                  |          |

CODE **49898**

DESCRIPTION: **HYDRAULIC CABINET 1 EXIT**

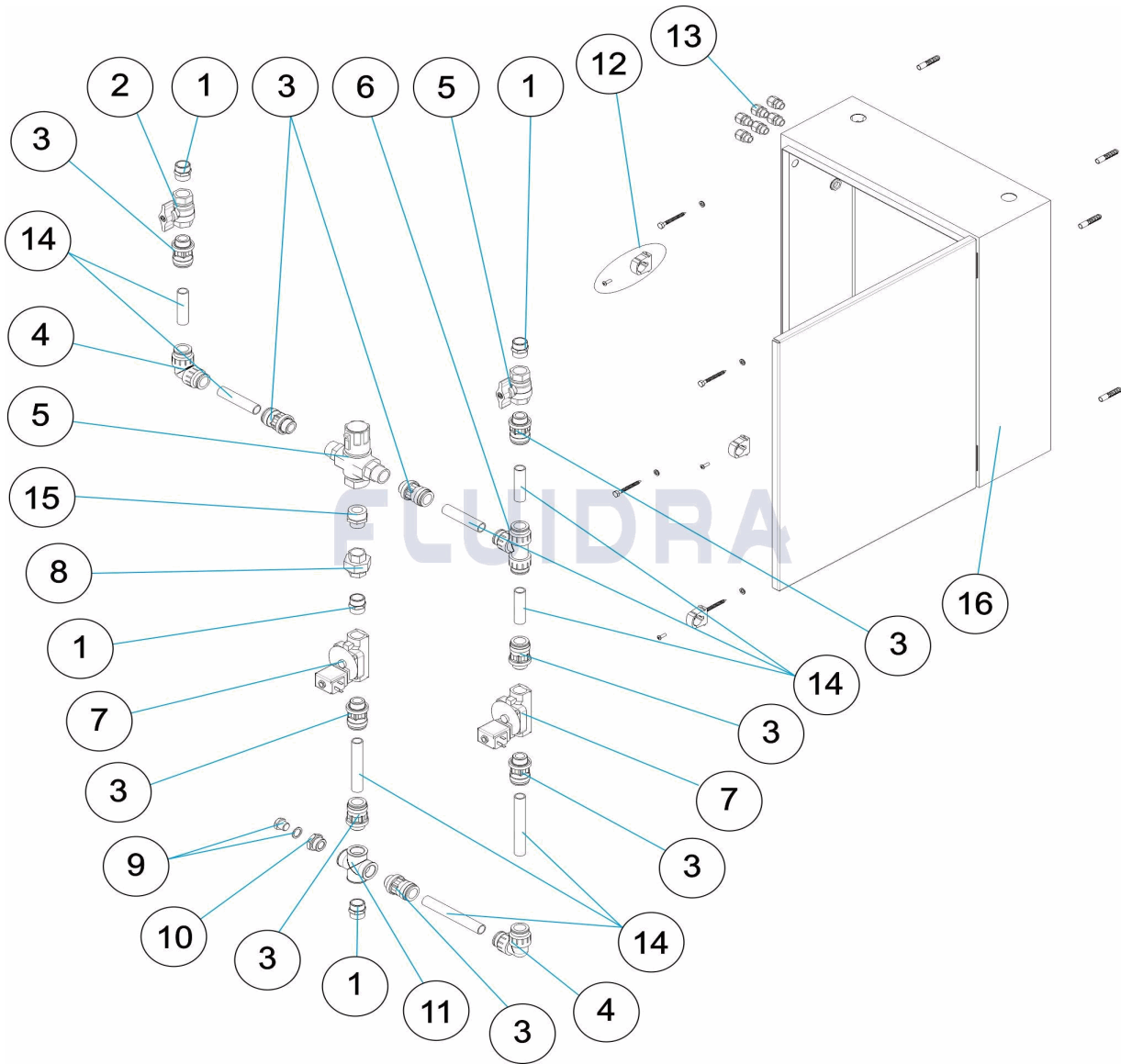


**ENGLISH**

| POS | CODE       | DESCRIPTION             | QUANTITY | POS | CODE       | DESCRIPTION                            | QUANTITY |
|-----|------------|-------------------------|----------|-----|------------|--|----------|
| 1   | 4401040112 | M-M 3/4" SPIGO "        |          | 9   | 4405020507 | PRE-FILTER DRAIN PLUG                  |          |
| 2   | 4401040113 | H-H 3/4" BALL VALVE     |          | 10  | 4401040120 | 3/4 - 3/8" REDUCER                     |          |
| 3   | 4401040114 | D. 22-3/4" MALE ADAPTOR |          | 11  | 4401040121 | 3/4" H.W BSP CROSS-PIEC "              |          |
| 4   | 4401040115 | D.22 ELBOW              |          | 12  | 4401040122 | CLIP D.22                              |          |
| 5   | 4401040116 | THERMOSTATIC VALVE      |          | 13  | 4401040123 | PG9 PACKING GLAND UNIT                 |          |
| 6   | 4401040117 | D.22 'TE '              |          | 14  | 4401040125 | B-PEX MULTILAYER TUBING 22 X 3 (1 METF |          |
| 7   | 4401040118 | SOLENOID VALVE 3/4"     |          | 15  | 4401040124 | 1-3/4" REDUCING NIPPL "                |          |
| 8   | 4401040119 | 3/4" 3 PART CONNECTO "  |          | 16  | 41259R1100 | HYDRAULIC CABINET                      |          |

CODICE 49898

DESCRIZIONE: ARMADIO IDRAULICO 1 USCITA

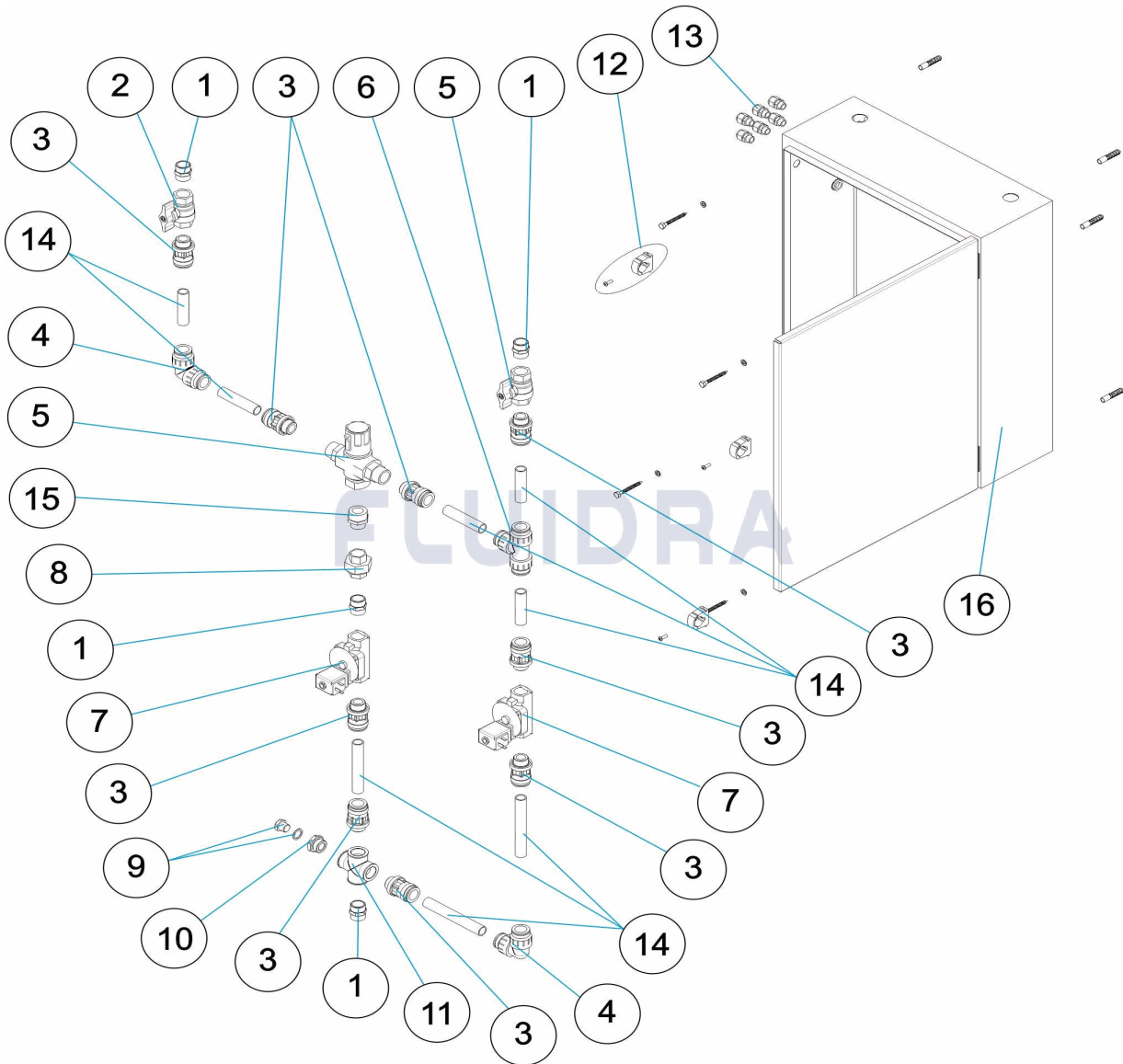


ITALIANO

| POS | CODICE     | DESCRIZIONE                  | QUANTITA' | POS | CODICE     | DESCRIZIONE                          | QUANTITA' |
|-----|------------|------------------------------|-----------|-----|------------|--------------------------------------|-----------|
| 1   | 4401040112 | NIPPLO M-M 3/4"              |           | 9   | 4405020507 | TAPPO SPURGO PREFILTRO               |           |
| 2   | 4401040113 | VALVOLA A SFERA H-H 1/2"     |           | 10  | 4401040120 | RIDUTTORE 3/4 - 3/8"                 |           |
| 3   | 4401040114 | ADATTATORE MASCHIO D.22-3/4" |           | 11  | 4401040121 | CHIAVE A CROCE 3/4" H.W BS "         |           |
| 4   | 4401040115 | GOMITO D.22                  |           | 12  | 4401040122 | CLIP D.22                            |           |
| 5   | 4401040116 | VALVOLA TERMOSTATICA         |           | 13  | 4401040123 | GRUPPO PREMISTOPPA PG9               |           |
| 6   | 4401040117 | T' D.22                      |           | 14  | 4401040125 | TUYAU MULTICOUCHE B-PEX 22X3 (1 MÈT) |           |
| 7   | 4401040118 | ELETTROVALVOLA 3/4"          |           | 15  | 4401040124 | ADATTATORE MASCHIO 1-3/4"            |           |
| 8   | 4401040119 | COLLEGAMENTO 3 PARTI 3/4"    |           | 16  | 41259R1100 | ARMADIO IDRAULICO                    |           |

CODE 49898

BESCHREIBUNG: HYDRAULIKSCHRANK 1 AUSGANG

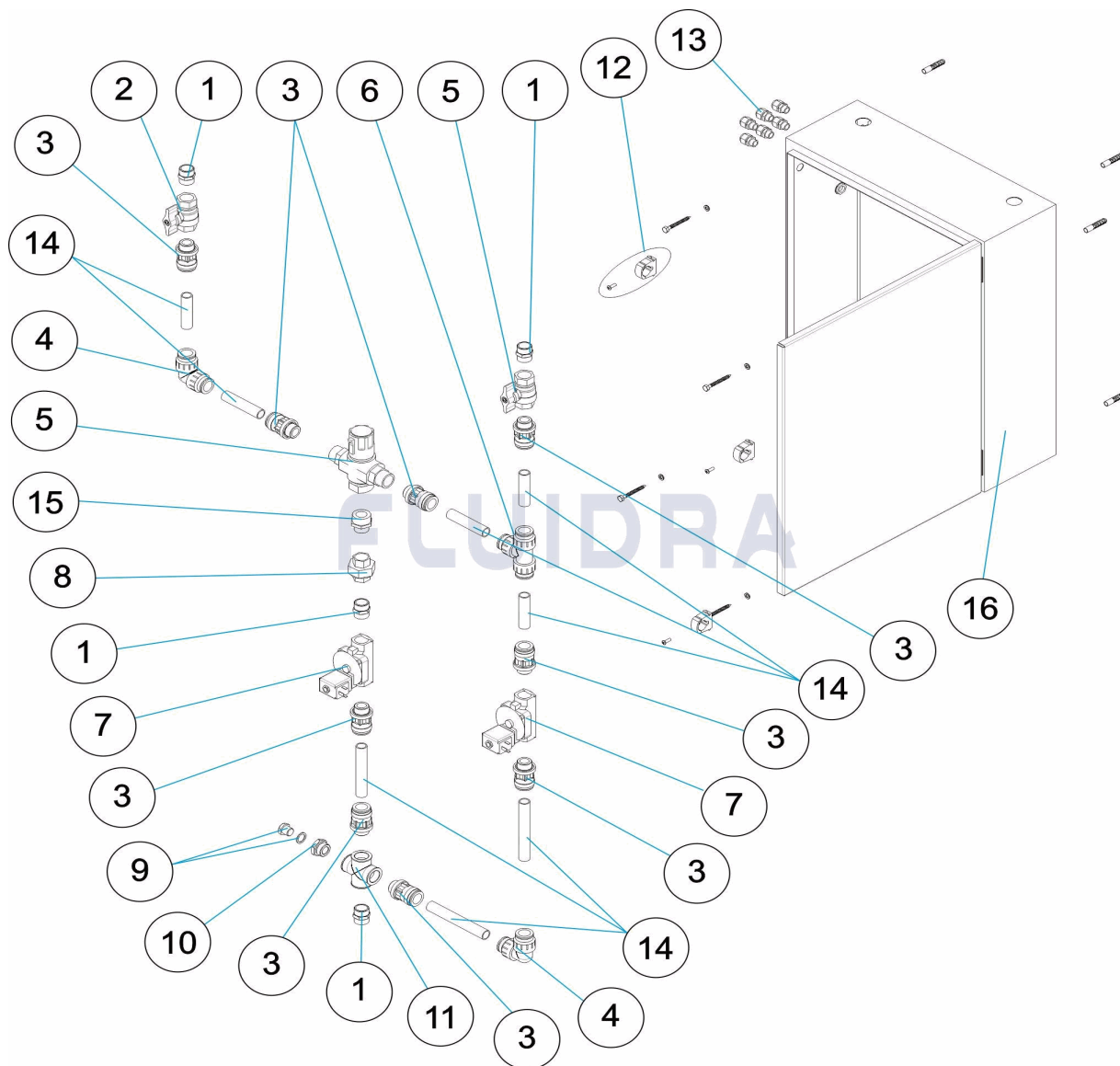


DEUTSCH

| POS | CODE       | BESCHREIBUNG                | MENGE | POS | CODE       | BESCHREIBUNG                        | MENGE |
|-----|------------|-----------------------------|-------|-----|------------|-------------------------------------|-------|
| 1   | 4401040112 | SCHRAUBTEIL M M 3/4"        |       | 9   | 4405020507 | ABLASSSTOPFEN VORFILTER             |       |
| 2   | 4401040113 | KUGELVENTIL H - H 3/4"      |       | 10  | 4401040120 | REDUZIERSTÜCK 3/4 - 3/8"            |       |
| 3   | 4401040114 | ADAPTERSTECKER D. 22 - 3/4" |       | 11  | 4401040121 | KREUZSTÜCK 3/4" H.W BS "            |       |
| 4   | 4401040115 | WINKEL D. 22                |       | 12  | 4401040122 | CLIP D. 22                          |       |
| 5   | 4401040116 | VENTIL TERMOSTATISCH        |       | 13  | 4401040123 | SET QUETSCHVERSCHRAUBUNG PG9        |       |
| 6   | 4401040117 | T-STÜCK D. 22               |       | 14  | 4401040125 | MEHRSCHTTROHR B - PEX 22 X 3 (1 ME1 |       |
| 7   | 4401040118 | ELEKTROVENTIL 3/4"          |       | 15  | 4401040124 | REDUZIERSCHRAUBTEIL 1 - 3/4"        |       |
| 8   | 4401040119 | ANSCHLUSS 3 STK 3/4"        |       | 16  | 41259R1100 | HYDRAULIKSCHRANK                    |       |

CODIGO **49898**

DESCRIÇÃO: **ARMÁRIO HIDRÁULICO 1 SAÍDA**



**PORTUGUES**

| POS | CODIGO     | DESCRIÇÃO                  | JANTIDADE | POS | CODIGO     | DESCRIÇÃO                            | JANTIDADE |
|-----|------------|----------------------------|-----------|-----|------------|--------------------------------------|-----------|
| 1   | 4401040112 | MACHO M-M 3/4"             |           | 9   | 4405020507 | TAMPÃO PURGA PREFILTRO               |           |
| 2   | 4401040113 | VÁLVULA DE ESFERA H-H 3/4" |           | 10  | 4401040120 | REDUTOR 3/4 - 3/8"                   |           |
| 3   | 4401040114 | ADAPTADOR MACHO D.22-3/4"  |           | 11  | 4401040121 | CRUZETA 3/4" H.W BS "                |           |
| 4   | 4401040115 | COTOBEL D.22               |           | 12  | 4401040122 | CLIP D.22                            |           |
| 5   | 4401040116 | VÁLVULA TERMOSTÁTICA       |           | 13  | 4401040123 | CJTO. PRENSA-ESTOPAS PG9             |           |
| 6   | 4401040117 | TÊ D.22                    |           | 14  | 4401040125 | TUBO MULTICAMADA B-PEX 22X3 (1 METR( |           |
| 7   | 4401040118 | ELECTROVALVULA 3/4"        |           | 15  | 4401040124 | ROSCA MACHO REDUTORA 1-3/4"          |           |
| 8   | 4401040119 | UNIÃO 3 PEÇAS 3/4"         |           | 16  | 41259R1100 | ARMÁRIO HIDRÁULICO                   |           |