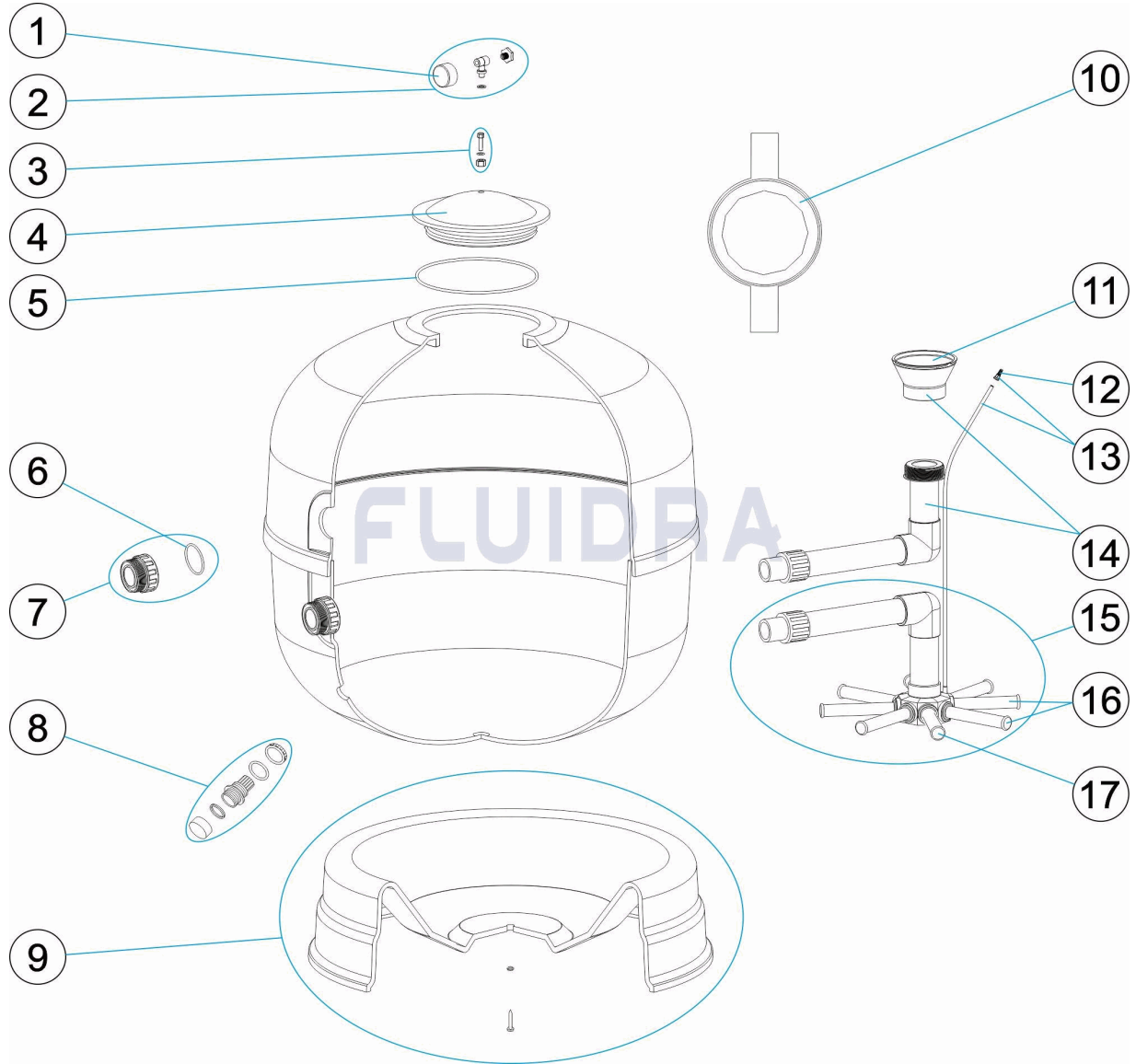


CODIGO **10010WSA0, 10011WSA0, 10012WSA0, 10013WSA0, 10015WSA0**

DESCRIPCION: **FILTRO JUPITER T/J8**



**ESPAÑOL**

POS	CODIGO	DESCRIPCION	CANTIDAD	POS	CODIGO	DESCRIPCION	CANTIDAD
1	CE04180405	MANOMETRO 1/8" 3 KG/C "		11	* CE04300910	CONO DIFUSOR D. 63	
2	CE04180404	MANOMETRO COMPLETO		12	CE04040108	PURGA AIRE	
3	CE04010000	ADAPTADOR MANOMETRO		13	CE04300707	TUBO RIGIDO L-845	
4	CE04190003	GRUPO TAPA JUPITER 8"		14	* CE04010300	CJTO. DIFUSOR 9	
5	CE04010006	JUNTA TORICA		14	* CE04010119	CJTO. DIFUSOR D. 600	
6	CE04040115	JUNTA TORICA D. 60X8		14	* CE04010303	CJTO. DIFUSOR 18	
7	* CE04040103	RACORD 1 1/2" + JUNTA TORIC "		14	* CE04010120	CJTO. DIFUSOR D. 750	
7	* CE04040112	RACORD SALIDA 2" + JUNTA TORIC "		14	* CE04010304	CJTO. DIFUSOR 33	
8	CE04010005	CJTO. PURGA		15	* CE04260015	CONJ. COLECTOR D. 450	
9	* CE04010340	PIE FILTRO D. 400		15	* CE04010305	CJTO. COLECTOR 14	
9	* CE04010134	PIE FILTRO		15	* CE04010306	CJTO. COLECTOR 18	
9	* CE04040004	PIE FILTRO D. 600		15	* CE04010357	CJTO. COLECTOR MODEL 22	
9	* CE04010299	PIE FILTRO 33		15	* CE04010358	CJTO. COLECTOR MODEL 33	

CODIGO **10010WSA0, 10011WSA0, 10012WSA0, 10013WSA0, 10015WSA0**

DESCRIPCION: **FILTRO JUPITER T/J8**

10	CE04010014	LLAVE TAPA FILTRO SNT 8"	16	* CE04010025	CJTO. BRAZOS COLECTOR D. 400
11	* CE04301004	CONO DIFUSOR D.50	16	* CE04010026	CJTO. BRAZOS COLECTOR
16	* CE04010048	CJTO. BRAZOS COLECTOR D. 750	17	* CE04300915	BRAZO COLECTOR 1" 175 M "
17	* CE04300917	BRAZO COLECTOR 1" 110 M "	17	* CE04290109	BRAZO COLECTOR 1" 265 M "

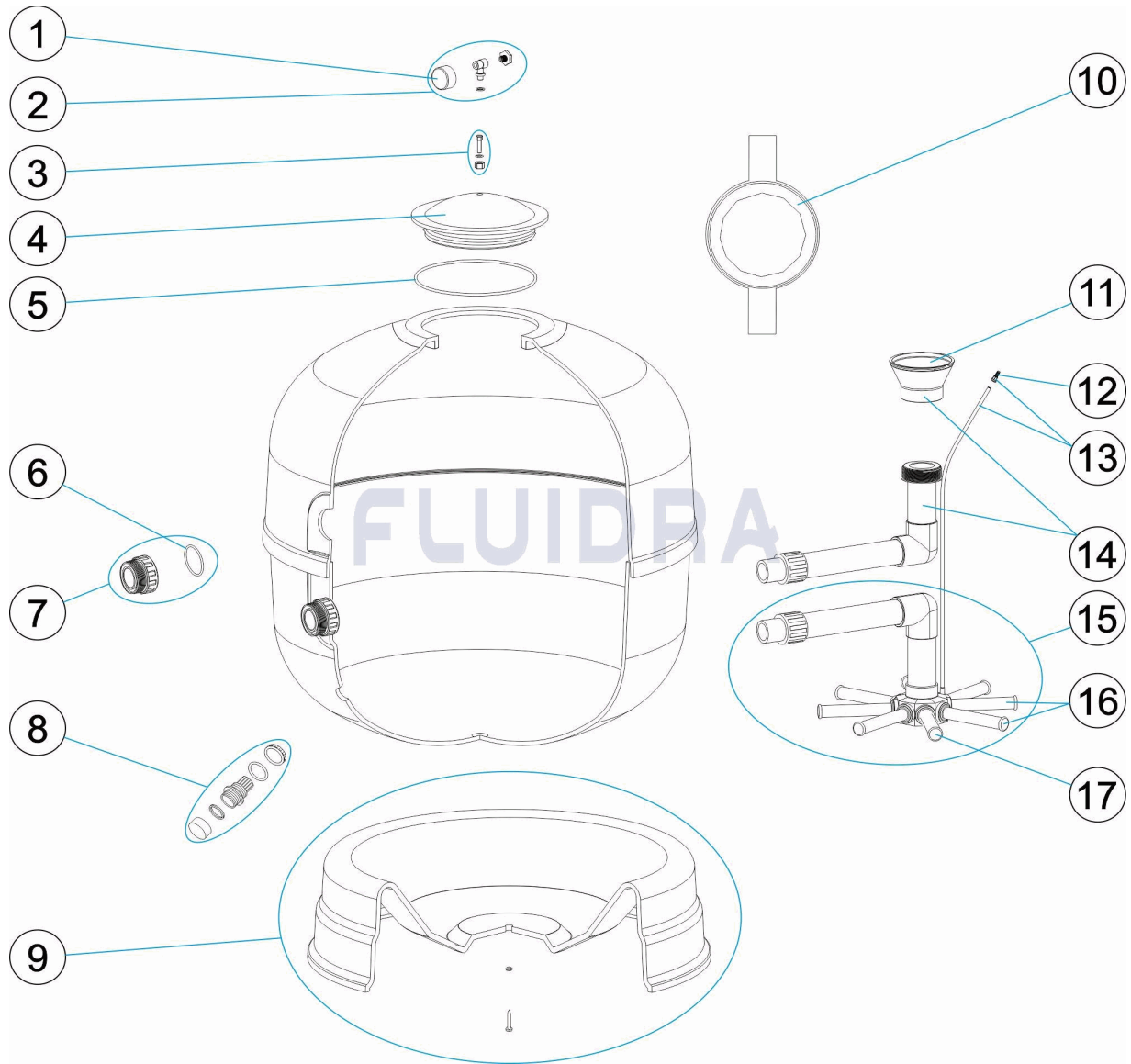
CODIGO **10010WSA0, 10011WSA0, 10012WSA0, 10013WSA0, 10015WSA0**DESCRIPCION: **FILTRO JUPITER T/J8**

## OBSERVACIONES

POS	CODIGO	OBSERVACIONES
7	*CE04040103	PARA: 10010WSA0, 10011WSA0, 10012WSA0, 10015WSA0
7	*CE04040112	PARA: 10013WSA0
9	*CE04010340	PARA: 10010WSA0
9	*CE04010134	PARA: 10011WSA0
9	*CE04040004	PARA: 10012WSA0, 10015WSA0
9	*CE04010299	PARA: 10013WSA0
11	*CE04301004	PARA: 10010WSA0, 10011WSA0, 10012WSA0, 10015WSA0
11	*CE04300910	PARA: 10013WSA0
14	*CE04010300	PARA: 10010WSA0
14	*CE04010119	PARA: 10011WSA0
14	*CE04010303	PARA: 10015WSA0
14	*CE04010120	PARA: 10012WSA0
14	*CE04010304	PARA: 10013WSA0
15	*CE04260015	PARA: 10010WSA0
15	*CE04010305	PARA: 10011WSA0
15	*CE04010306	PARA: 10015WSA0
15	*CE04010357	PARA: 10012WSA0
15	*CE04010358	PARA: 10013WSA0
16	*CE04010025	PARA: 10010WSA0, 10011WSA0, 10012WSA0
16	*CE04010026	PARA: 10015WSA0
16	*CE04010048	PARA: 10013WSA0
17	*CE04300917	PARA: 10010WSA0 [4UNIDADES], 10011WSA0 [4UNIDADES], 10012WSA0 [4UNIDADES]
17	*CE04300915	PARA: 10015WSA0 [4UNIDADES]
17	*CE04290109	PARA: 10013WSA0 [6UNIDADES]

CODE 10010WSA0, 10011WSA0, 10012WSA0, 10013WSA0, 10015WSA0

DESCRIPTION: FILTRE JUPITER T J8



## FRANCAIS

POS	CODE	DESCRIPTION	QUANTITE	POS	CODE	DESCRIPTION	QUANTITE
1	CE04180405	MANOMETRE 1/8" 3 KG./C "		11	* CE04300910	DIFUSOR CONIQUE SUPERIOR D. 63	
2	CE04180404	MANOMETRE COMPLET		12	CE04040108	PURGE D'AIR	
3	CE04010000	ADAPTEUR MANOMETRE		13	CE04300707	TUBE RIGIDE L-845	
4	CE04190003	ENSEMBLE COUVERCLE JUPITER 8'		14	* CE04010300	ENSEMBLE DIFFUSEUR 9	
5	CE04010006	JOINT TORIQUE		14	* CE04010119	ENSEMBLE DIFFUSEUR D. 600	
6	CE04040115	JOINT TORIQUE D 60X8		14	* CE04010303	ENSEMBLE DIFFUSEUR 18	
7	* CE04040103	RACCORD 1 1/2" + JOINT TORIQU "		14	* CE04010120	ENSEMBLE DIFFUSEUR D. 750	
7	* CE04040112	RACCORD SORTIE 2" + JOINT TORIQU "		14	* CE04010304	ENSEMBLE DIFFUSEUR 33	
8	CE04010005	ENSEMBLE PURGE		15	* CE04260015	ENSEMBLE COLLECTEUR D. 450	
9	* CE04010340	SOCLE FILTRE D 400		15	* CE04010305	ENSEMBLE COLLECTEUR 14	
9	* CE04010134	SOCLE FILTRE		15	* CE04010306	ENSEMBLE COLLECTEUR 18	
9	* CE04040004	SOCLE FILTRE D. 600		15	* CE04010357	ENSEMBLE COLLECTEUR MODEL 22	
9	* CE04010299	SOCLE FILTRE 33		15	* CE04010358	ENSEMBLE COLLECTEUR MODEL 33	

\* VOIR FICHE D'OBSERVATIONS

CODE **10010WSA0, 10011WSA0, 10012WSA0, 10013WSA0, 10015WSA0**

DESCRIPTION: **FILTRE JUPITER T J8**

10	CE04010014	CLE COUVERCLE SNT 8"	16	* CE04010025	ENSEMBLE BRAS DE REPARTITEUR D. 400
11	* CE04301004	DIFUSOR CONIQUE SUPÉRIOR D. 50	16	* CE04010026	ENSEMBLE BRAS DE REPARTITEUR
16	* CE04010048	ENSEMBLE BRAS DE REPARTITEUR D. 75	17	* CE04300915	BRAS DE REPARTITEUR 1" 175 M "
17	* CE04300917	BRAS DE REPARTITEUR 1" 110 M "	17	* CE04290109	BRAS DE REPARTITEUR 1" 265 M/M "

CODE **10010WSA0, 10011WSA0, 10012WSA0, 10013WSA0, 10015WSA0**

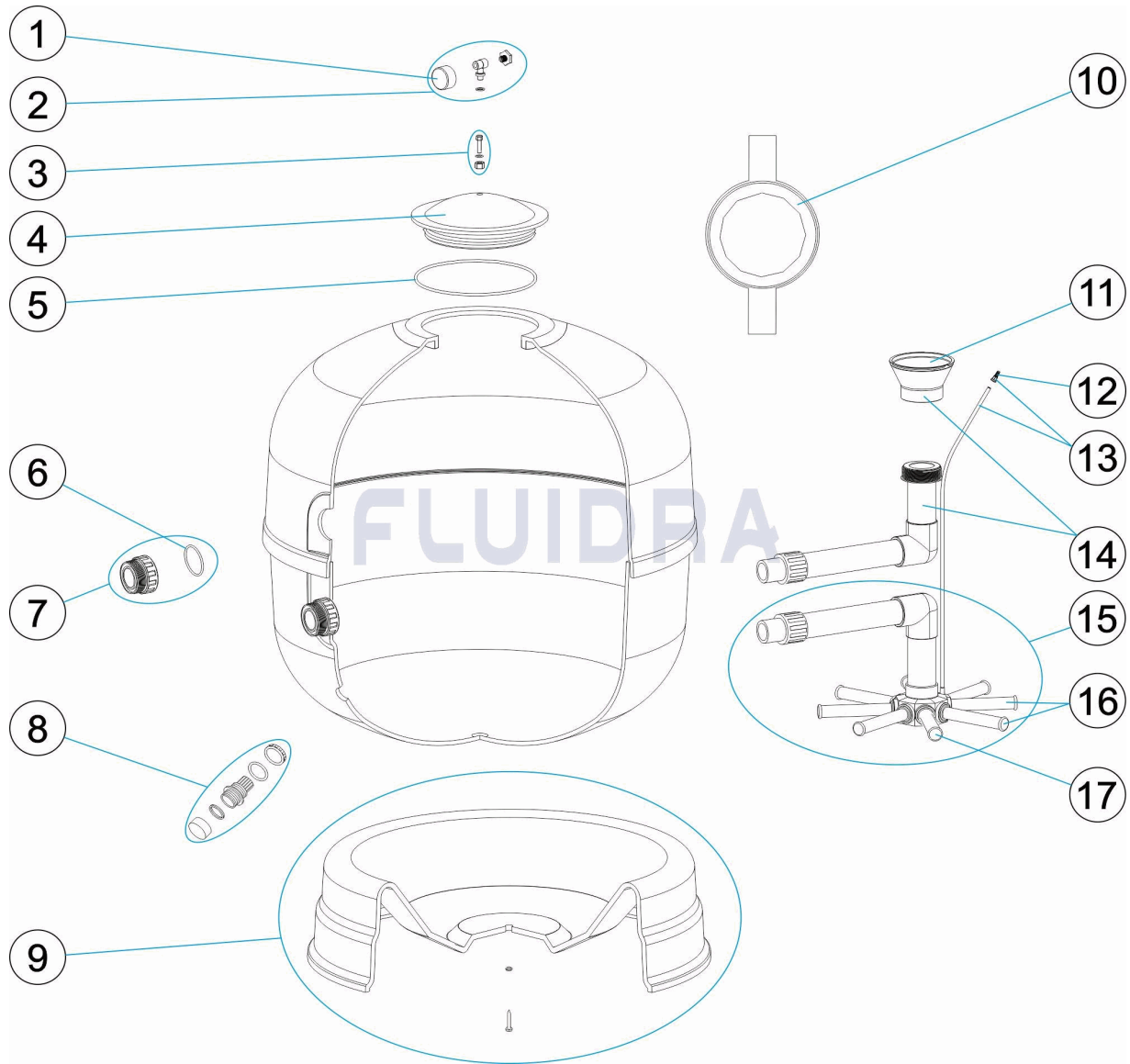
DESCRIPTION: **FILTRE JUPITER T J8**

## OBSERVATIONS

POS	CODE	OBSERVATIONS
7	*CE04040103	POUR: 10010WSA0, 10011WSA0, 10012WSA0, 10015WSA0
7	*CE04040112	POUR: 10013WSA0
9	*CE04010340	POUR: 10010WSA0
9	*CE04010134	POUR: 10011WSA0
9	*CE04040004	POUR: 10012WSA0, 10015WSA0
9	*CE04010299	POUR: 10013WSA0
11	*CE04301004	POUR: 10010WSA0, 10011WSA0, 10012WSA0, 10015WSA0
11	*CE04300910	POUR: 10013WSA0
14	*CE04010300	POUR: 10010WSA0
14	*CE04010119	POUR: 10011WSA0
14	*CE04010303	POUR: 10015WSA0
14	*CE04010120	POUR: 10012WSA0
14	*CE04010304	POUR: 10013WSA0
15	*CE04260015	POUR: 10010WSA0
15	*CE04010305	POUR: 10011WSA0
15	*CE04010306	POUR: 10015WSA0
15	*CE04010357	POUR: 10012WSA0
15	*CE04010358	POUR: 10013WSA0
16	*CE04010025	POUR: 10010WSA0, 10011WSA0, 10012WSA0
16	*CE04010026	POUR: 10015WSA0
16	*CE04010048	POUR: 10013WSA0
17	*CE04300917	POUR: 10010WSA0 [4UT], 10011WSA0 [4UT], 10012WSA0 [4UT]
17	*CE04300915	POUR: 10015WSA0 [4UT]
17	*CE04290109	POUR: 10013WSA0 [6UT]

CODE 10010WSA0, 10011WSA0, 10012WSA0, 10013WSA0, 10015WSA0

DESCRIPTION: JUPITER T J8 FILTER



**ENGLISH**

POS	CODE	DESCRIPTION	QUANTITY	POS	CODE	DESCRIPTION	QUANTITY
1	CE04180405	PRESSURE GAUGE 1/8" 3 KG./C "		11	* CE04300910	DIFFUSER CONE D. 63	
2	CE04180404	COMPLETE PRESSURE GAUGE UNIT		12	CE04040108	AIR PURGE	
3	CE04010000	ADAPTORPRESSURE GAUGE		13	CE04300707	RIGID PIPE L-845	
4	CE04190003	JUPITER 8" LID SE "		14	* CE04010300	DIFFUSER ASSEMBLY 9	
5	CE04010006	O' RING		14	* CE04010119	DIFFUSER ASSEMBLY D. 600	
6	CE04040115	O' RING D. 60X8		14	* CE04010303	DIFFUSER ASSEMBLY 18	
7	* CE04040103	FITTING 1 1/2" + O'RIN "		14	* CE04010120	DIFFUSER ASSEMBLY D. 750	
7	* CE04040112	2" OUTLET FITTING + O'RIN "		14	* CE04010304	DIFFUSER ASSEMBLY 33	
8	CE04010005	DRAIN SET		15	* CE04260015	MANIFOLD ASSEMBLY D. 450	
9	* CE04010340	FILTER BASE D. 400		15	* CE04010305	MANIFOLD ASSEMBLY 14	
9	* CE04010134	FILTER BASE		15	* CE04010306	MANIFOLD ASSEMBLY 18	
9	* CE04040004	FILTER BASE D. 600		15	* CE04010357	MANIFOLD ASSEMBLY MODEL 22	
9	* CE04010299	FILTER BASE 33		15	* CE04010358	MANIFOLD ASSEMBLY MODEL 33	

\* SEE OBSERVATIONS SHEET



# PARTS BREAKDOWN

REV.: 2  
DATE: 24/02/2020  
SHEET: 2/3

768

CODE **10010WSA0, 10011WSA0, 10012WSA0, 10013WSA0, 10015WSA0**

DESCRIPTION: **JUPITER T J8 FILTER**

10	CE04010014	LID KEY SNT 8"	16	* CE04010025	MANIFOLD ARM ASSEMBLY D. 400
11	* CE04301004	DIFFUSER CONE D. 50	16	* CE04010026	MANIFOLD ARM ASSEMBLY
16	* CE04010048	MANIFOLD ARM ASSEMBLY D. 750	17	* CE04300915	MANIFOLD ARM 1" 175 M "
17	* CE04300917	MANIFOLD ARM 1" 110 M "	17	* CE04290109	COLLECTOR ARM 1" 265 M "



CODE **10010WSA0, 10011WSA0, 10012WSA0, 10013WSA0, 10015WSA0**

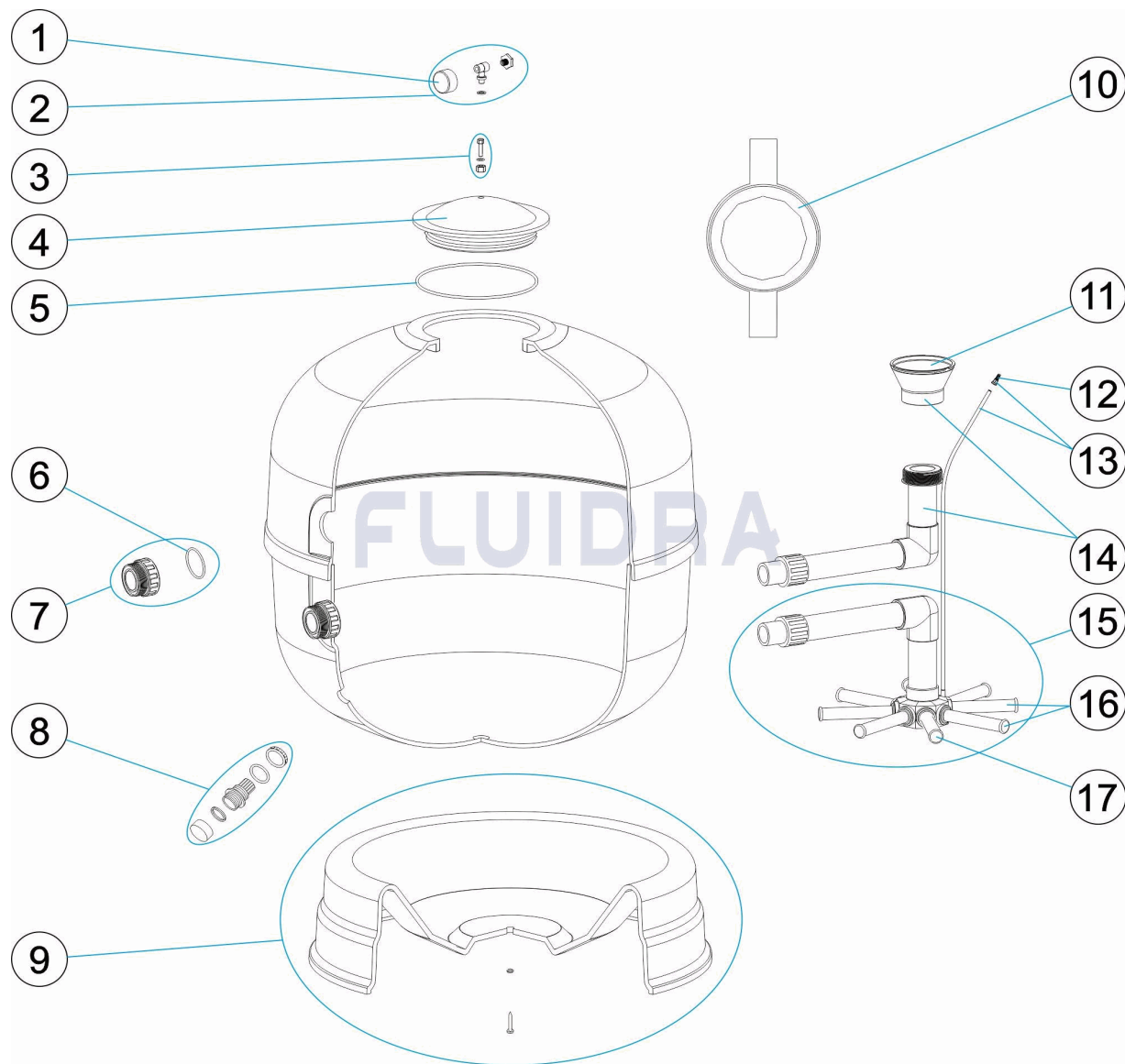
DESCRIPTION: **JUPITER T J8 FILTER**

## OBSERVATIONS

POS	CODE	OBSERVATIONS
7	*CE04040103	FOR: 10010WSA0, 10011WSA0, 10012WSA0, 10015WSA0
7	*CE04040112	FOR: 10013WSA0
9	*CE04010340	FOR: 10010WSA0
9	*CE04010134	FOR: 10011WSA0
9	*CE04040004	FOR: 10012WSA0, 10015WSA0
9	*CE04010299	FOR: 10013WSA0
11	*CE04301004	FOR: 10010WSA0, 10011WSA0, 10012WSA0, 10015WSA0
11	*CE04300910	FOR: 10013WSA0
14	*CE04010300	FOR: 10010WSA0
14	*CE04010119	FOR: 10011WSA0
14	*CE04010303	FOR: 10015WSA0
14	*CE04010120	FOR: 10012WSA0
14	*CE04010304	FOR: 10013WSA0
15	*CE04260015	FOR: 10010WSA0
15	*CE04010305	FOR: 10011WSA0
15	*CE04010306	FOR: 10015WSA0
15	*CE04010357	FOR: 10012WSA0
15	*CE04010358	FOR: 10013WSA0
16	*CE04010025	FOR: 10010WSA0, 10011WSA0, 10012WSA0
16	*CE04010026	FOR: 10015WSA0
16	*CE04010048	FOR: 10013WSA0
17	*CE04300917	FOR: 10010WSA0 [4UT], 10011WSA0 [4UT], 10012WSA0 [4UT]
17	*CE04300915	FOR: 10015WSA0 [4UT]
17	*CE04290109	FOR: 10013WSA0 [6UT]

CODICE 10010WSA0, 10011WSA0, 10012WSA0, 10013WSA0, 10015WSA0

DESCRIZIONE: FILTRO JUPITER T J8



### ITALIANO

POS	CODICE	DESCRIZIONE	QUANTITA'	POS	CODICE	DESCRIZIONE	QUANTITA'
1	CE04180405	MANOMETRO 1/8" 3 KG./C "		11	* CE04300910	CONO DIFFUSORE D. 63	
2	CE04180404	MANOMETRO COMPLETO		12	CE04040108	SFIATO ARIA	
3	CE04010000	ADATTATORE MANOMETRO		13	CE04300707	TUBO RIGIDO L-845	
4	CE04190003	BLOCCO COPERCHIO JUPITER 8"		14	* CE04010300	RACCORDO DIFFUSORE 9	
5	CE04010006	O-RING		14	* CE04010119	RACCORDO DIFFUSORE D. 600	
6	CE04040115	O-RING D 60X8		14	* CE04010303	RACCORDO DIFFUSORE 18	
7	* CE04040103	RACCORDO 1 1/2" + O-RIN "		14	* CE04010120	RACCORDO DIFFUSORE D. 750	
7	* CE04040112	RACCORDO USCITA 2" + O-RING		14	* CE04010304	RACCORDO DIFFUSORE 33	
8	CE04010005	KIT SCARICO		15	* CE04260015	KIT COLLETTORE D. 450	
9	* CE04010340	BASE FILTRO D 400		15	* CE04010305	KIT COLLETTORE 14	
9	* CE04010134	BASE FILTRO		15	* CE04010306	KIT COLLETTORE 18	
9	* CE04040004	BASE FILTRO D. 600		15	* CE04010357	KIT COLLETTORE MODEL 22	
9	* CE04010299	BASE FILTRO 33		15	* CE04010358	KIT COLLETTORE MODEL 33	

CODICE **10010WSA0, 10011WSA0, 10012WSA0, 10013WSA0, 10015WSA0**DESCRIZIONE: **FILTRO JUPITER T J8**

10	CE04010014	CHIAVE COPERCHIO SNT 8"	16	* CE04010025	GRUPPO CANDELOTTO COLLECTORE D. 4
11	* CE04301004	CONO DIFFUSORE D. 50	16	* CE04010026	GRUPPO CANDELOTTO COLLECTORE
16	* CE04010048	GRUPPO CANDELOTTO COLLECTORE D. 7	17	* CE04300915	CANDELOTTO COLLECTORE 1" 175 M "
17	* CE04300917	CANDELOTTO COLLECTORE 1" 110 M "	17	* CE04290109	CANDELOTTO 1" 265 M/M "

CODICE                    **10010WSA0, 10011WSA0, 10012WSA0, 10013WSA0, 10015WSA0**

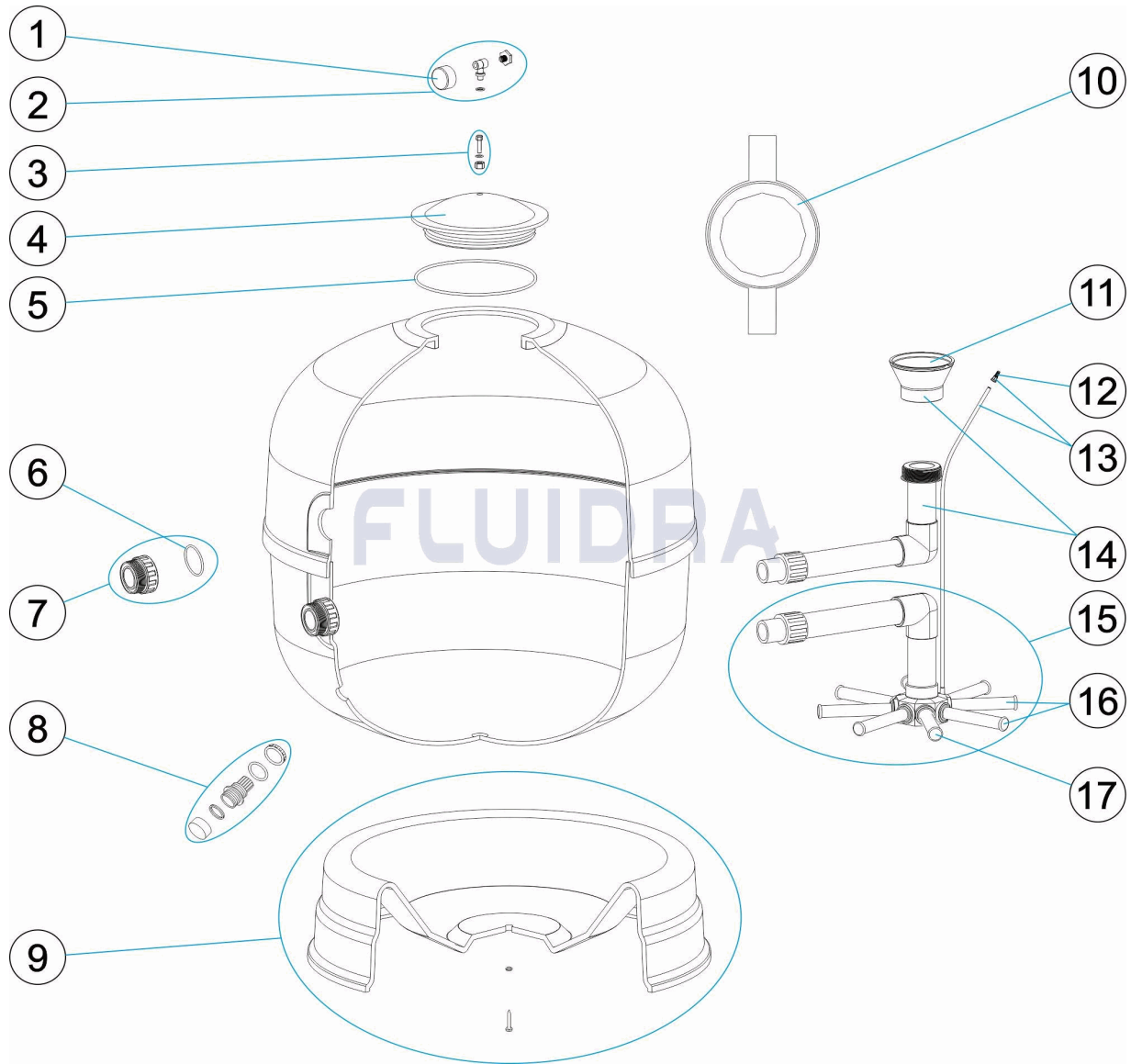
DESCRIZIONE: **FILTRO JUPITER T J8**

## OSSERVAZIONI

POS	CODICE	OSSERVAZIONI
7	*CE04040103	PER: 10010WSA0, 10011WSA0, 10012WSA0, 10015WSA0
7	*CE04040112	PER: 10013WSA0
9	*CE04010340	PER: 10010WSA0
9	*CE04010134	PER: 10011WSA0
9	*CE04040004	PER: 10012WSA0, 10015WSA0
9	*CE04010299	PER: 10013WSA0
11	*CE04301004	PER: 10010WSA0, 10011WSA0, 10012WSA0, 10015WSA0
11	*CE04300910	PER: 10013WSA0
14	*CE04010300	PER: 10010WSA0
14	*CE04010119	PER: 10011WSA0
14	*CE04010303	PER: 10015WSA0
14	*CE04010120	PER: 10012WSA0
14	*CE04010304	PER: 10013WSA0
15	*CE04260015	PER: 10010WSA0
15	*CE04010305	PER: 10011WSA0
15	*CE04010306	PER: 10015WSA0
15	*CE04010357	PER: 10012WSA0
15	*CE04010358	PER: 10013WSA0
16	*CE04010025	PER: 10010WSA0, 10011WSA0, 10012WSA0
16	*CE04010026	PER: 10015WSA0
16	*CE04010048	PER: 10013WSA0
17	*CE04300917	PER: 10010WSA0 [4UT], 10011WSA0 [4UT], 10012WSA0 [4UT]
17	*CE04300915	PER: 10015WSA0 [4UT]
17	*CE04290109	PER: 10013WSA0 [6UT]

CODE 10010WSA0, 10011WSA0, 10012WSA0, 10013WSA0, 10015WSA0

BESCHREIBUNG: FILTER JUPITER T/J8



## DEUTSCH

POS	CODE	BESCHREIBUNG	MENGE	POS	CODE	BESCHREIBUNG	MENGE
1	CE04180405	MANOMETER 1/8" 3 KG/C "		11	* CE04300910	KEGEL WASSERVERTEILER D. 63	
2	CE04180404	MANOMETER KOMPLETT		12	CE04040108	ENTLÜFTUNG	
3	CE04010000	MANOMETERADAPTER		13	CE04300707	ROHR HART L - 845	
4	CE04190003	GRUPPE ABDECKUNG JUPITER 8"		14	* CE04010300	SET WASSERVERTEILER 9	
5	CE04010006	O-RING		14	* CE04010119	SET WASSERVERTEILER D. 600	
6	CE04040115	O-RING D. 60 X 8		14	* CE04010303	SET WASSERVERTEILER 18	
7	* CE04040103	GEWINDESTÜCK 1 1/2" UND O-RIN "		14	* CE04010120	SET WASSERVERTEILER D. 750	
7	* CE04040112	GEWINDESTÜCK AUSGANG 2" UND O-RIN		14	* CE04010304	SET WASSERVERTEILER 33	
8	CE04010005	SET ABLASS		15	* CE04260015	SET SAMMELROHR D. 450	
9	* CE04010340	FILTERFUSS D. 400		15	* CE04010305	SAMMELROHRSET 14	
9	* CE04010134	FILTERFUSS		15	* CE04010306	SAMMELROHRSET 18	
9	* CE04040004	FILTERFUSS D. 600		15	* CE04010357	SAMMELROHRSET MODEL 22	
9	* CE04010299	FILTERFUSS 33		15	* CE04010358	SAMMELROHRSET MODEL 33	

\* SIEHE ANMERKUGSBLATT

CODE **10010WSA0, 10011WSA0, 10012WSA0, 10013WSA0, 10015WSA0**

BESCHREIBUNG: **FILTER JUPITER T/J8**

10	CE04010014	SCHLÜSSEL FILTERABDECKUNG SNT 8"	16	* CE04010025	SET FILTERSTERN-SCHLITZROHR D. 400
11	* CE04301004	KEGEL WASSERVERTEILER D. 50	16	* CE04010026	SET FILTERSTERN-SCHLITZROHR
16	* CE04010048	SET FILTERSTERN-SCHLITZROHR D. 750	17	* CE04300915	FILTERSTERN-SCHLITZROHR 1" 175 M "
17	* CE04300917	FILTERSTERN-SCHLITZROHR 1" 110 M "	17	* CE04290109	FILTERSTERN-SCHLITZROHR 1" 265 M "

CODE **10010WSA0, 10011WSA0, 10012WSA0, 10013WSA0, 10015WSA0**

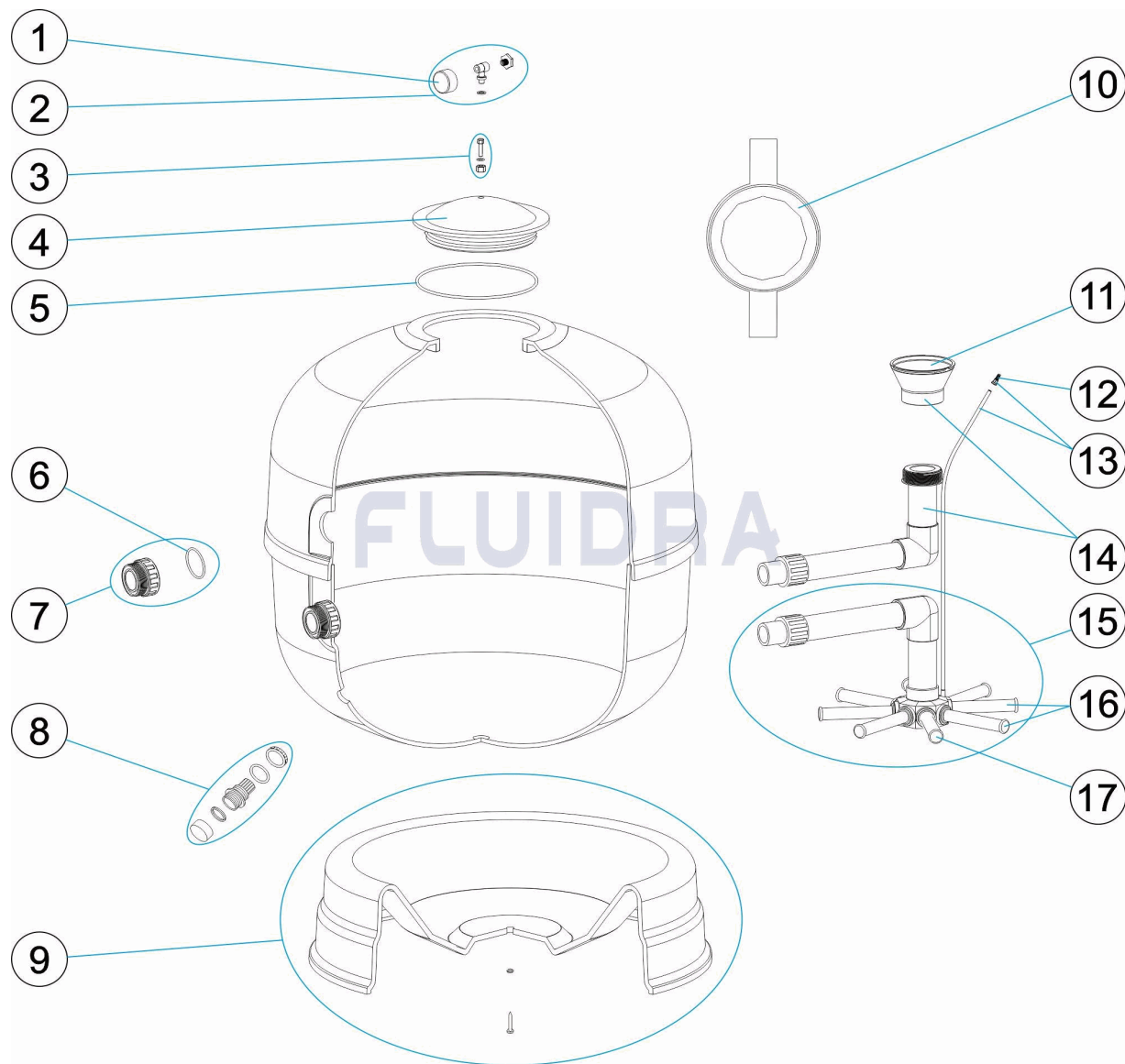
BESCHREIBUNG: **FILTER JUPITER T/J8**

## HINWEISE

POS	CODE	HINWEISE
7	*CE04040103	FÜR: 10010WSA0, 10011WSA0, 10012WSA0, 10015WSA0
7	*CE04040112	FÜR: 10013WSA0
9	*CE04010340	FÜR: 10010WSA0
9	*CE04010134	FÜR: 10011WSA0
9	*CE04040004	FÜR: 10012WSA0, 10015WSA0
9	*CE04010299	FÜR: 10013WSA0
11	*CE04301004	FÜR: 10010WSA0, 10011WSA0, 10012WSA0, 10015WSA0
11	*CE04300910	FÜR: 10013WSA0
14	*CE04010300	FÜR: 10010WSA0
14	*CE04010119	FÜR: 10011WSA0
14	*CE04010303	FÜR: 10015WSA0
14	*CE04010120	FÜR: 10012WSA0
14	*CE04010304	FÜR: 10013WSA0
15	*CE04260015	FÜR: 10010WSA0
15	*CE04010305	FÜR: 10011WSA0
15	*CE04010306	FÜR: 10015WSA0
15	*CE04010357	FÜR: 10012WSA0
15	*CE04010358	FÜR: 10013WSA0
16	*CE04010025	FÜR: 10010WSA0, 10011WSA0, 10012WSA0
16	*CE04010026	FÜR: 10015WSA0
16	*CE04010048	FÜR: 10013WSA0
17	*CE04300917	FÜR: 10010WSA0 [4UT], 10011WSA0 [4UT], 10012WSA0 [4UT]
17	*CE04300915	FÜR: 10015WSA0 [4UT]
17	*CE04290109	FÜR: 10013WSA0 [6UT]

CODIGO **10010WSA0, 10011WSA0, 10012WSA0, 10013WSA0, 10015WSA0**

DESCRICÃO: **FILTRO JUPITER T J8**



### PORTUGUES

POS	CODIGO	DESCRICÃO	JANTIDADE	POS	CODIGO	DESCRICÃO	JANTIDADE
1	CE04180405	MANOMETRO 1/8" 3 KG./C "		11	* CE04300910	CONO DIFUSOR D. 63	
2	CE04180404	MANÓMETRO COMPLETO		12	CE04040108	PURGA AREIA	
3	CE04010000	ADAPTADOR MANOMETRO		13	CE04300707	TUBO RÍGIDO L-845	
4	CE04190003	CONJUNTO TAMPA JUPITER 8"		14	* CE04010300	CJTO. DIFUSOR 9	
5	CE04010006	JUNTA TÓRICA		14	* CE04010119	CJTO. DIFUSOR D. 600	
6	CE04040115	JUNTA TÓRICA D 60X8		14	* CE04010303	CJTO. DIFUSOR 18	
7	* CE04040103	RACORD 1 1/2" JUNTA TORIC "		14	* CE04010120	CJTO. DIFUSOR D. 750	
7	* CE04040112	ACOPLADOR SAÍDA 2" + JUNTA TORIC "		14	* CE04010304	CJTO. DIFUSOR 33	
8	CE04010005	CONJUNTO PURDA		15	* CE04260015	CJTO. COLECTOR D. 450	
9	* CE04010340	PÉ FILTRO D 400		15	* CE04010305	CJTO. COLECTOR 14	
9	* CE04010134	PÉ FILTRO		15	* CE04010306	CJTO. COLECTOR 18	
9	* CE04040004	PÉ FILTRO D. 600		15	* CE04010357	CJTO. COLECTOR MODEL 22	
9	* CE04010299	PÉ FILTRO 33		15	* CE04010358	CJTO. COLECTOR MODEL 33	

\* VEJA A FICHA DE OBSERVAÇÕES



CODIGO **10010WSA0, 10011WSA0, 10012WSA0, 10013WSA0, 10015WSA0**DESCRICAÇÃO: **FILTRO JUPITER T J8**

10	CE04010014	CHAVE TAMPA SNT 8"	16	* CE04010025	CJTO. BRAÇO COLECTOR D. 400
11	* CE04301004	CONO DIFUSOR D. 50	16	* CE04010026	CJTO. BRAÇO COLECTOR
16	* CE04010048	CJTO. BRAÇO COLECTOR D. 750	17	* CE04300915	BRAÇO COLECTOR 1" 175 M "
17	* CE04300917	BRAÇO COLECTOR 1" 110 M "	17	* CE04290109	BRAÇO COLECTOR 1" 265 M/M "

CODIGO **10010WSA0, 10011WSA0, 10012WSA0, 10013WSA0, 10015WSA0**DESCRIÇÃO: **FILTRO JUPITER T J8****OBSERVAÇÕES**

POS	CODIGO	OBSERVAÇÕES
7	*CE04040103	PARA: 10010WSA0, 10011WSA0, 10012WSA0, 10015WSA0
7	*CE04040112	PARA: 10013WSA0
9	*CE04010340	PARA: 10010WSA0
9	*CE04010134	PARA: 10011WSA0
9	*CE04040004	PARA: 10012WSA0, 10015WSA0
9	*CE04010299	PARA: 10013WSA0
11	*CE04301004	PARA: 10010WSA0, 10011WSA0, 10012WSA0, 10015WSA0
11	*CE04300910	PARA: 10013WSA0
14	*CE04010300	PARA: 10010WSA0
14	*CE04010119	PARA: 10011WSA0
14	*CE04010303	PARA: 10015WSA0
14	*CE04010120	PARA: 10012WSA0
14	*CE04010304	PARA: 10013WSA0
15	*CE04260015	PARA: 10010WSA0
15	*CE04010305	PARA: 10011WSA0
15	*CE04010306	PARA: 10015WSA0
15	*CE04010357	PARA: 10012WSA0
15	*CE04010358	PARA: 10013WSA0
16	*CE04010025	PARA: 10010WSA0, 10011WSA0, 10012WSA0
16	*CE04010026	PARA: 10015WSA0
16	*CE04010048	PARA: 10013WSA0
17	*CE04300917	PARA: 10010WSA0 [4UT], 10011WSA0 [4UT], 10012WSA0 [4UT]
17	*CE04300915	PARA: 10015WSA0 [4UT]
17	*CE04290109	PARA: 10013WSA0 [6UT]