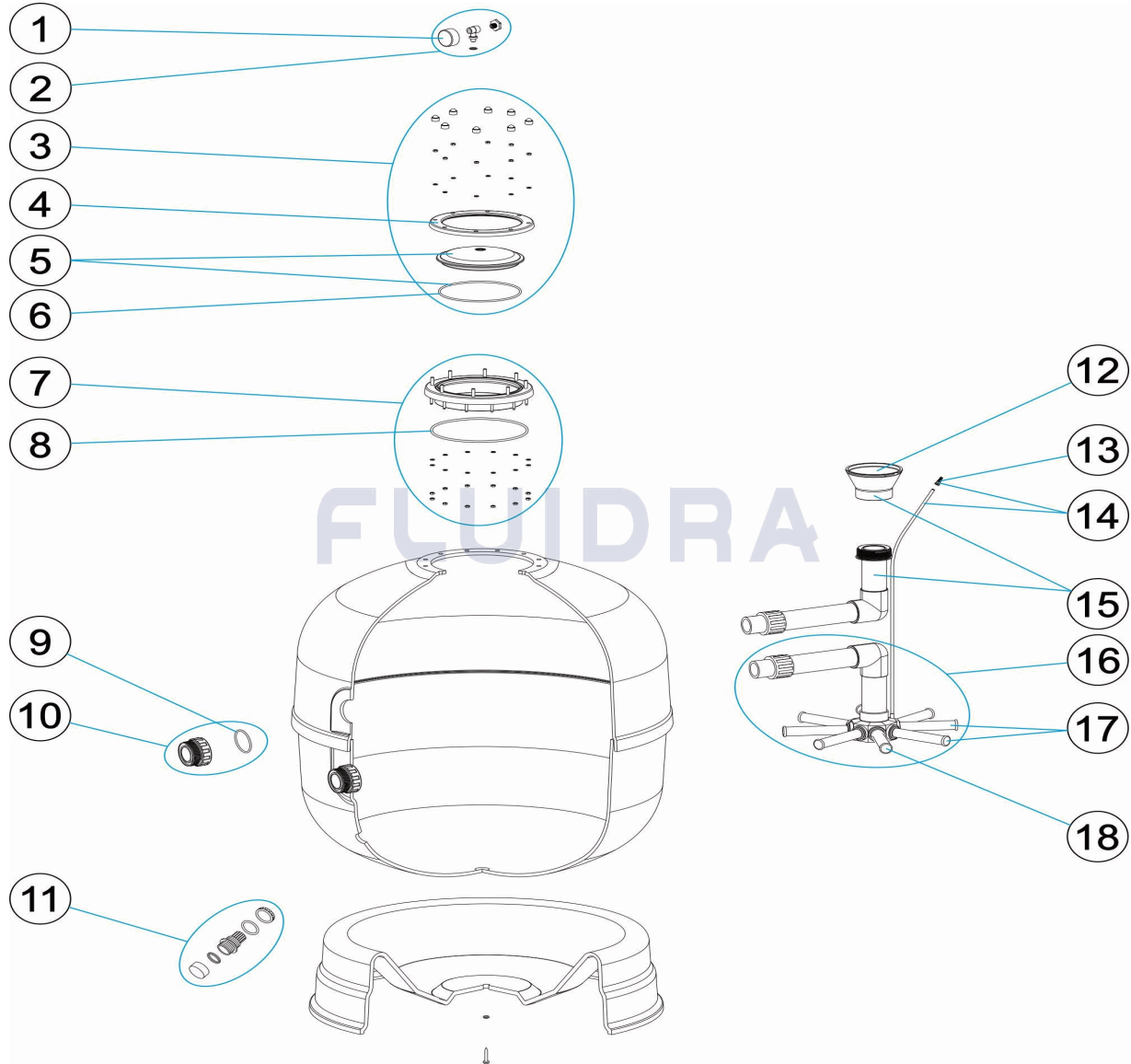


CODIGO **10014FC20, 10016FC20, 10017FC20, 10018FC20, 10019FC20**

DESCRIPCION: **FILTRO JUPITER TAPA TORNILLOS**



**ESPAÑOL**

POS	CODIGO	DESCRIPCION	CANTIDAD	POS	CODIGO	DESCRIPCION	CANTIDAD
1	CE04180405	MANOMETRO 1/8" 3 KG/C "		14	CE04300707	TUBO RIGIDO L-845	
2	CE04180404	MANOMETRO COMPLETO		15	* CE04260009	CONJ. DIFUSOR D. 450	
3	CE04190325	GRUPO TAPA TRANSPARENTE		15	* CE04010119	CJTO. DIFUSOR D. 600	
4	CE04160849	ARO FIJACION TAPA		15	* CE04010303	CJTO. DIFUSOR 18	
5	CE04190303	TAPA TRANSPARENTE D. 220 + JUNTA		15	* CE04010120	CJTO. DIFUSOR D. 750	
6	CE04260106	JUNTA ARO FIJACION VALVULA		15	* CE04010304	CJTO. DIFUSOR 33	
7	CE04160809	ARO CUELLO 20 TORNILLOS		16	* CE04260015	CONJ. COLECTOR D. 450	
8	CE04020116	JUNTA TORICA 255X4		16	* CE04010305	CJTO. COLECTOR 14	
9	CE04040115	JUNTA TORICA D. 60X8		16	* CE04010306	CJTO. COLECTOR 18	
10	* CE04040103	RACORD 1 1/2" + JUNTA TORIC "		16	* CE04010307	CJTO. COLECTOR 22	
10	* CE04040112	RACORD SALIDA 2" + JUNTA TORIC "		16	* CE04010358	CJTO. COLECTOR MODEL 33	
11	CE04010005	CJTO. PURGA		17	* CE04010025	CJTO. BRAZOS COLECTOR D. 400	
12	* CE04301004	CONO DIFUSOR D.50		17	* CE04010026	CJTO. BRAZOS COLECTOR	

CODIGO **10014FC20, 10016FC20, 10017FC20, 10018FC20, 10019FC20**

DESCRIPCION: **FILTRO JUPITER TAPA TORNILLOS**

12	* CE04300910	CONO DIFUSOR D. 63	17	* CE04010048	CJTO. BRAZOS COLECTOR D. 750
13	CE04040108	PURGA AIRE	18	* CE04300917	BRAZO COLECTOR 1" 110 M "
18	* CE04300915	BRAZO COLECTOR 1" 175 M "	18	* CE04290109	BRAZO COLECTOR 1" 265 M "

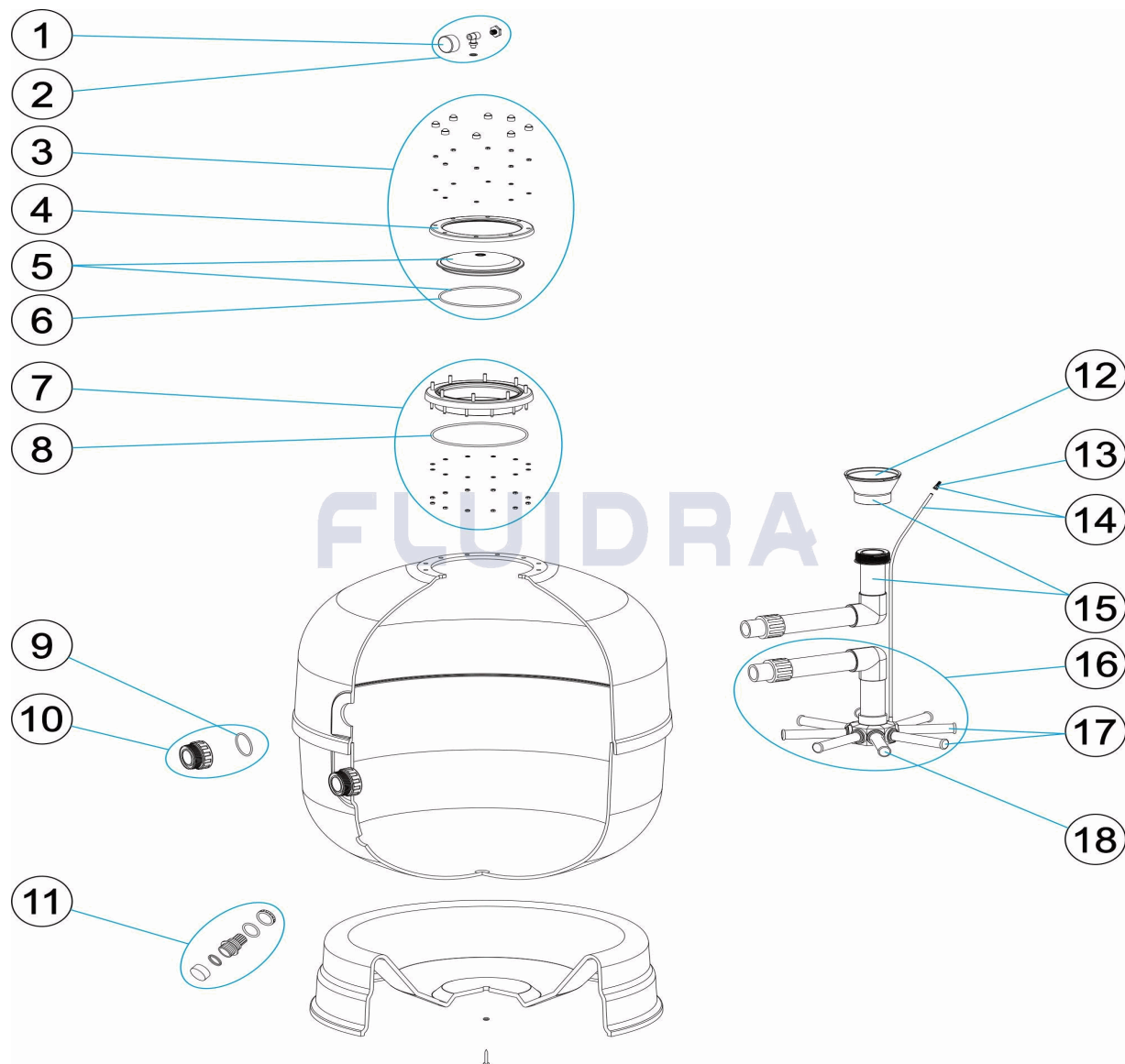
CODIGO **10014FC20, 10016FC20, 10017FC20, 10018FC20, 10019FC20**DESCRIPCION: **FILTRO JUPITER TAPA TORNILLOS**

## OBSERVACIONES

POS	CODIGO	OBSERVACIONES
10	*CE04040103	PARA: 10014FC20, 10016FC20
10	*CE04040112	PARA: 10017FC20, 10018FC20, 10019FC20
12	*CE04301004	PARA: 10014FC20, 10016FC20
12	*CE04300910	PARA: 10017FC20, 10018FC20, 10019FC20
15	*CE04260009	PARA: 10014FC20
15	*CE04010119	PARA: 10016FC20
15	*CE04010303	PARA: 10019FC20
15	*CE04010120	PARA: 10017FC20
15	*CE04010304	PARA: 10018FC20
16	*CE04260015	PARA: 10014FC20
16	*CE04010305	PARA: 10016FC20
16	*CE04010306	PARA: 10019FC20
16	*CE04010307	PARA: 10017FC20
16	*CE04010358	PARA: 10018FC20
17	*CE04010025	PARA: 10014FC20, 10016FC20
17	*CE04010026	PARA: 10017FC20, 10019FC20
17	*CE04010048	PARA: 10018FC20
18	*CE04300917	PARA: 10014FC20 [4UNIDADES], 10016FC20 [4UNIDADES]
18	*CE04300915	PARA: 10017FC20 [4UNIDADES], 10019FC20 [4UNIDADES]
18	*CE04290109	PARA: 10018FC20 [6UNIDADES]

CODE **10014FC20, 10016FC20, 10017FC20, 10018FC20, 10019FC20**

DESCRIPTION: **FILTRE JUPITER COUVERCLE VIS**



### FRANCAIS

POS	CODE	DESCRIPTION	QUANTITE	POS	CODE	DESCRIPTION	QUANTITE
1	CE04180405	MANOMETRE 1/8" 3 KG./C "		14	CE04300707	TUBE RIGIDE L-845	
2	CE04180404	MANOMETRE COMPLET		15	* CE04260009	ENSEMBLE DIFFUSEUR D. 450	
3	CE04190325	ENSEMBLE COUVERCLE TRANSPARENT		15	* CE04010119	ENSEMBLE DIFFUSEUR D. 600	
4	CE04160849	BRIDE DE FIXATION COUVERCLE		15	* CE04010303	ENSEMBLE DIFFUSEUR 18	
5	CE04190303	COUVERCLE TRANSPARENT D.220 + JOIN		15	* CE04010120	ENSEMBLE DIFFUSEUR D. 750	
6	CE04260106	JOINT BRIDE FIXATION VANNE TOP		15	* CE04010304	ENSEMBLE DIFFUSEUR 33	
7	CE04160809	BRIDE GORGE 20 VIS		16	* CE04260015	ENSEMBLE COLLECTEUR D. 450	
8	CE04020116	JOINT TORIQUE 255X4		16	* CE04010305	ENSEMBLE COLLECTEUR 14	
9	CE04040115	JOINT TORIQUE D 60X8		16	* CE04010306	ENSEMBLE COLLECTEUR 18	
10	* CE04040103	RACCORD 1 1/2" + JOINT TORIQU "		16	* CE04010307	ENSEMBLE COLLECTEUR 22	
10	* CE04040112	RACCORD SORTIE 2" + JOINT TORIQU "		16	* CE04010358	ENSEMBLE COLLECTEUR MODEL 33	
11	CE04010005	ENSEMBLE PURGE		17	* CE04010025	ENSEMBLE BRAS DE REPARTITEUR D. 400	
12	* CE04301004	DIFUSOR CONIQUE SUPERIOR D. 50		17	* CE04010026	ENSEMBLE BRAS DE REPARTITEUR	

\* VOIR FICHE D'OBSERVATIONS

CODE **10014FC20, 10016FC20, 10017FC20, 10018FC20, 10019FC20**DESCRIPTION: **FILTRE JUPITER COUVERCLE VIS**

12	* CE04300910	DIFUSOR CONIQUE SUPÉRIOR D. 63	17	* CE04010048	ENSEMBLE BRAS DE REPARTITEUR D. 750
13	CE04040108	PURGE D'AIR	18	* CE04300917	BRAS DE REPARTITEUR 1" 110 M "
18	* CE04300915	BRAS DE REPARTITEUR 1" 175 M "	18	* CE04290109	BRAS DE REPARTITEUR 1" 265 M/M "

CODE **10014FC20, 10016FC20, 10017FC20, 10018FC20, 10019FC20**

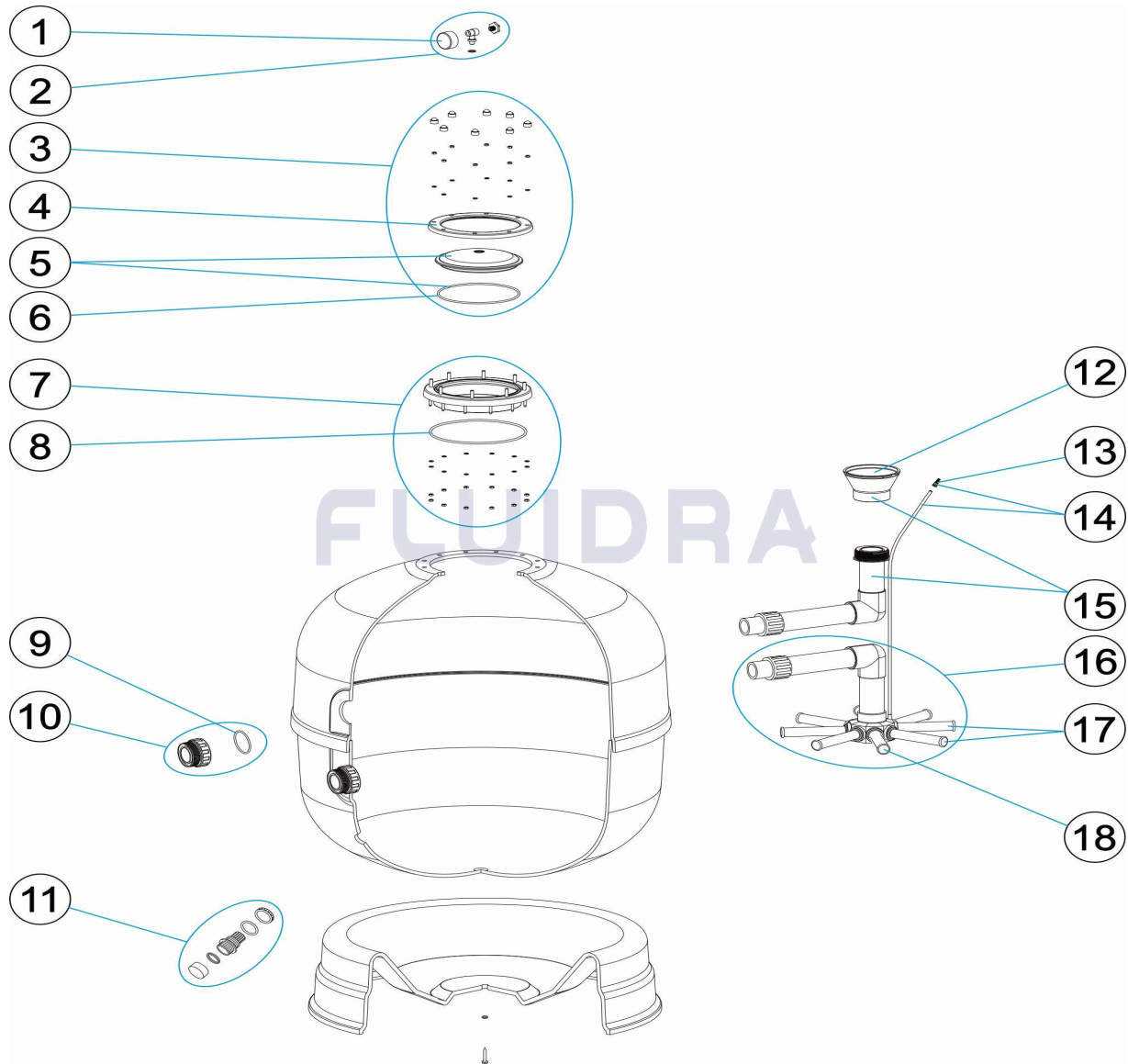
DESCRIPTION: **FILTRE JUPITER COUVERCLE VIS**

## OBSERVATIONS

POS	CODE	OBSERVATIONS
10	*CE04040103	POUR: 10014FC20, 10016FC20
10	*CE04040112	POUR: 10017FC20, 10018FC20, 10019FC20
12	*CE04301004	POUR: 10014FC20, 10016FC20
12	*CE04300910	POUR: 10017FC20, 10018FC20, 10019FC20
15	*CE04260009	POUR: 10014FC20
15	*CE04010119	POUR: 10016FC20
15	*CE04010303	POUR: 10019FC20
15	*CE04010120	POUR: 10017FC20
15	*CE04010304	POUR: 10018FC20
16	*CE04260015	POUR: 10014FC20
16	*CE04010305	POUR: 10016FC20
16	*CE04010306	POUR: 10019FC20
16	*CE04010307	POUR: 10017FC20
16	*CE04010358	POUR: 10018FC20
17	*CE04010025	POUR: 10014FC20, 10016FC20
17	*CE04010026	POUR: 10017FC20, 10019FC20
17	*CE04010048	POUR: 10018FC20
18	*CE04300917	POUR: 10014FC20 [4UT], 10016FC20 [4UT]
18	*CE04300915	POUR: 10017FC20 [4UT], 10019FC20 [4UT]
18	*CE04290109	POUR: 10018FC20 [6UT]

CODE 10014FC20, 10016FC20, 10017FC20, 10018FC20, 10019FC20

DESCRIPTION: JUPITER FILTER SCREW-IN COVER



**ENGLISH**

POS	CODE	DESCRIPTION	QUANTITY	POS	CODE	DESCRIPTION	QUANTITY
1	CE04180405	PRESSURE GAUGE 1/8" 3 KG./C "		14	CE04300707	RIGID PIPE L-845	
2	CE04180404	COMPLETE PRESSURE GAUGE UNIT		15	* CE04260009	DIFFUSER ASSEMBLY D. 450	
3	CE04190325	KIT TRANSPARENT LID		15	* CE04010119	DIFFUSER ASSEMBLY D. 600	
4	CE04160849	LID FIXING RING		15	* CE04010303	DIFFUSER ASSEMBLY 18	
5	CE04190303	TRANSPARENT LID D.220 + 'O' RING		15	* CE04010120	DIFFUSER ASSEMBLY D. 750	
6	CE04260106	VALVE TOP RING FIXING GASKET		15	* CE04010304	DIFFUSER ASSEMBLY 33	
7	CE04160809	20-SCREW NECK RING		16	* CE04260015	MANIFOLD ASSEMBLY D. 450	
8	CE04020116	O' RING 255X4		16	* CE04010305	MANIFOLD ASSEMBLY 14	
9	CE04040115	O' RING D. 60X8		16	* CE04010306	MANIFOLD ASSEMBLY 18	
10	* CE04040103	FITTING 1 1/2" + O'RIN "		16	* CE04010307	MANIFOLD ASSEMBLY 22	
10	* CE04040112	2" OUTLET FITTING + O'RIN "		16	* CE04010358	MANIFOLD ASSEMBLY MODEL 33	
11	CE04010005	DRAIN SET		17	* CE04010025	MANIFOLD ARM ASSEMBLY D. 400	
12	* CE04301004	DIFFUSER CONE D. 50		17	* CE04010026	MANIFOLD ARM ASSEMBLY	

\* SEE OBSERVATIONS SHEET



# PARTS BREAKDOWN

REV.: 3  
DATE: 27/07/2021  
SHEET: 2/3

772

CODE **10014FC20, 10016FC20, 10017FC20, 10018FC20, 10019FC20**

DESCRIPTION: **JUPITER FILTER SCREW-IN COVER**

12	* CE04300910	DIFFUSER CONE D. 63	17	* CE04010048	MANIFOLD ARM ASSEMBLY D. 750
13	CE04040108	AIR PURGE	18	* CE04300917	MANIFOLD ARM 1" 110 M "
18	* CE04300915	MANIFOLD ARM 1" 175 M "	18	* CE04290109	COLLECTOR ARM 1" 265 M "



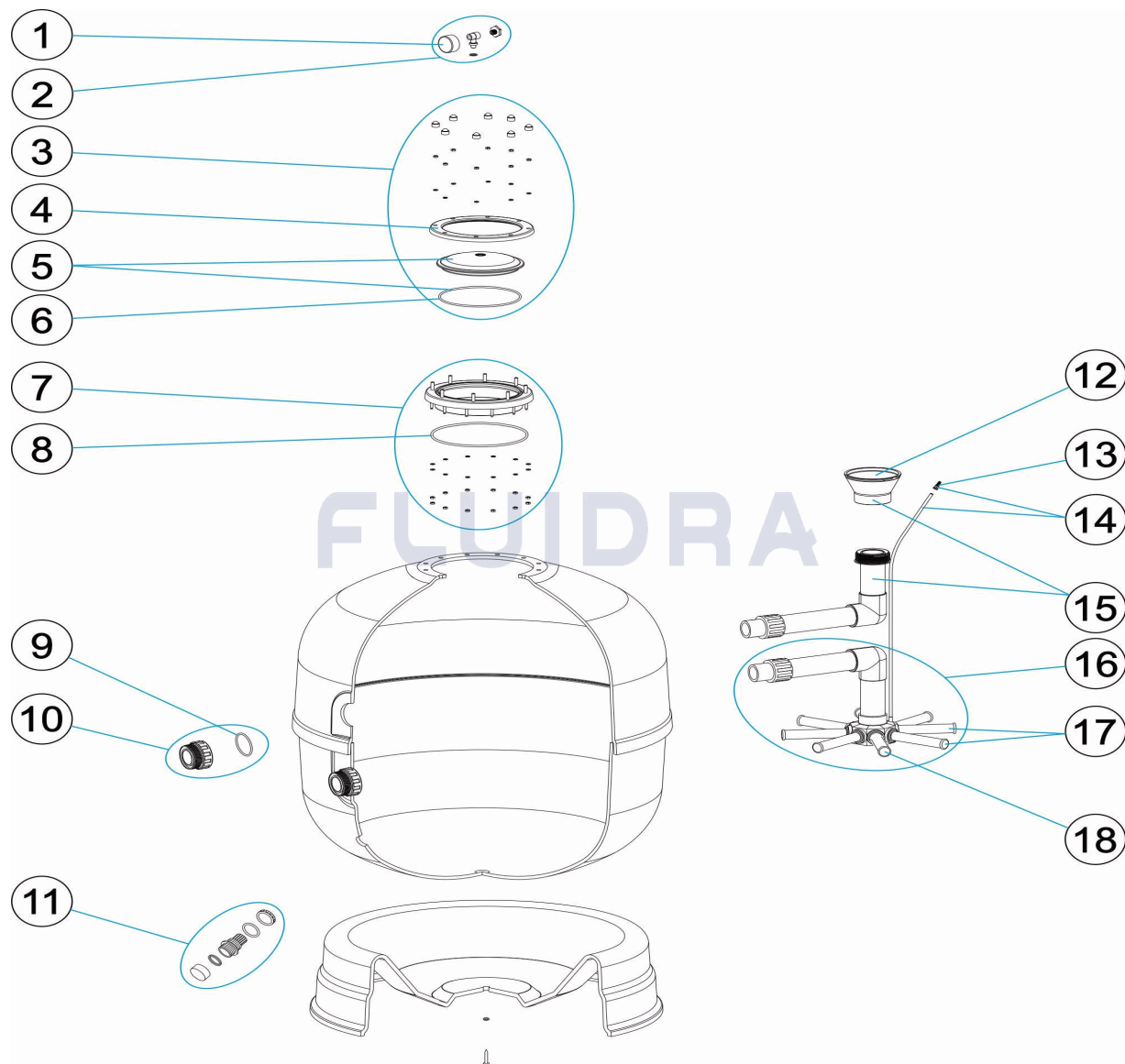
CODE **10014FC20, 10016FC20, 10017FC20, 10018FC20, 10019FC20**DESCRIPTION: **JUPITER FILTER SCREW-IN COVER**

## OBSERVATIONS

POS	CODE	OBSERVATIONS
10	*CE04040103	FOR: 10014FC20, 10016FC20
10	*CE04040112	FOR: 10017FC20, 10018FC20, 10019FC20
12	*CE04301004	FOR: 10014FC20, 10016FC20
12	*CE04300910	FOR: 10017FC20, 10018FC20, 10019FC20
15	*CE04260009	FOR: 10014FC20
15	*CE04010119	FOR: 10016FC20
15	*CE04010303	FOR: 10019FC20
15	*CE04010120	FOR: 10017FC20
15	*CE04010304	FOR: 10018FC20
16	*CE04260015	FOR: 10014FC20
16	*CE04010305	FOR: 10016FC20
16	*CE04010306	FOR: 10019FC20
16	*CE04010307	FOR: 10017FC20
16	*CE04010358	FOR: 10018FC20
17	*CE04010025	FOR: 10014FC20, 10016FC20
17	*CE04010026	FOR: 10017FC20, 10019FC20
17	*CE04010048	FOR: 10018FC20
18	*CE04300917	FOR: 10014FC20 [4UT], 10016FC20 [4UT]
18	*CE04300915	FOR: 10017FC20 [4UT], 10019FC20 [4UT]
18	*CE04290109	FOR: 10018FC20 [6UT]

CODICE **10014FC20, 10016FC20, 10017FC20, 10018FC20, 10019FC20**

DESCRIZIONE: **FILTRO JUPITER TAPPA VITI**



### ITALIANO

POS	CODICE	DESCRIZIONE	QUANTITA'	POS	CODICE	DESCRIZIONE	QUANTITA'
1	CE04180405	MANOMETRO 1/8" 3 KG./C "		14	CE04300707	TUBO RIGIDO L-845	
2	CE04180404	MANOMETRO COMPLETO		15	* CE04260009	RACCORDO DIFFUSORE D. 450	
3	CE04190325	GRUPPO COPERCHIO TRASPARENTE		15	* CE04010119	RACCORDO DIFFUSORE D. 600	
4	CE04160849	FLANGIA FISSAGGIO COPERCHIO		15	* CE04010303	RACCORDO DIFFUSORE 18	
5	CE04190303	COPERCHIO TRASPARENTE D.220 + O-R		15	* CE04010120	RACCORDO DIFFUSORE D. 750	
6	CE04260106	GUARNIZIONE FLANGIA FISSAGGIO VALVOL		15	* CE04010304	RACCORDO DIFFUSORE 33	
7	CE04160809	ANELLO COLLO 20 VITI		16	* CE04260015	KIT COLLETTORE D. 450	
8	CE04020116	O-RING 255X4		16	* CE04010305	KIT COLLETTORE 14	
9	CE04040115	O-RING D 60X8		16	* CE04010306	KIT COLLETTORE 18	
10	* CE04040103	RACCORDO 1 1/2" + O-RIN "		16	* CE04010307	KIT COLLETTORE 22	
10	* CE04040112	RACCORDO USCITA 2" + O-RING		16	* CE04010358	KIT COLLETTORE MODEL 33	
11	CE04010005	KIT SCARICO		17	* CE04010025	GRUPPO CANDELOTTO COLLECTORE D. 4	
12	* CE04301004	CONO DIFFUSORE D. 50		17	* CE04010026	GRUPPO CANDELOTTO COLLECTORE	

CODICE **10014FC20, 10016FC20, 10017FC20, 10018FC20, 10019FC20**DESCRIZIONE: **FILTRO JUPITER TAPPA VITI**

12	* CE04300910	CONO DIFFUSORE D. 63	17	* CE04010048	GRUPPO CANDELOTTO COLLECTORE D. 7
13	CE04040108	SFIATO ARIA	18	* CE04300917	CANDELOTTO COLLECTORE 1" 110 M "
18	* CE04300915	CANDELOTTO COLLECTORE 1" 175 M "	18	* CE04290109	CANDELOTTO 1" 265 M/M "

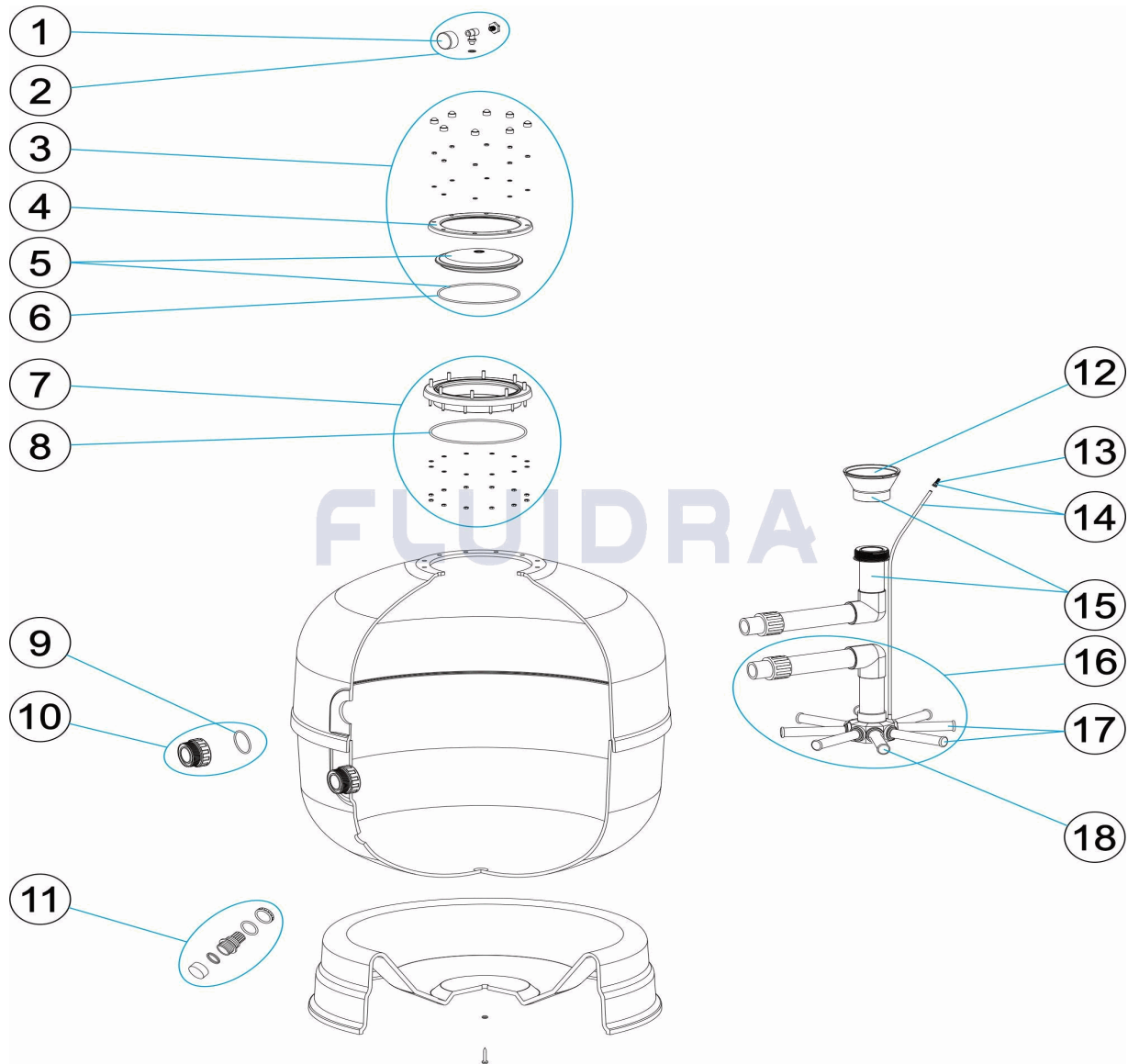
CODICE **10014FC20, 10016FC20, 10017FC20, 10018FC20, 10019FC20**DESCRIZIONE: **FILTRO JUPITER TAPPA VITI**

## OSSERVAZIONI

POS	CODICE	OSSERVAZIONI
10	*CE04040103	PER: 10014FC20, 10016FC20
10	*CE04040112	PER: 10017FC20, 10018FC20, 10019FC20
12	*CE04301004	PER: 10014FC20, 10016FC20
12	*CE04300910	PER: 10017FC20, 10018FC20, 10019FC20
15	*CE04260009	PER: 10014FC20
15	*CE04010119	PER: 10016FC20
15	*CE04010303	PER: 10019FC20
15	*CE04010120	PER: 10017FC20
15	*CE04010304	PER: 10018FC20
16	*CE04260015	PER: 10014FC20
16	*CE04010305	PER: 10016FC20
16	*CE04010306	PER: 10019FC20
16	*CE04010307	PER: 10017FC20
16	*CE04010358	PER: 10018FC20
17	*CE04010025	PER: 10014FC20, 10016FC20
17	*CE04010026	PER: 10017FC20, 10019FC20
17	*CE04010048	PER: 10018FC20
18	*CE04300917	PER: 10014FC20 [4UT], 10016FC20 [4UT]
18	*CE04300915	PER: 10017FC20 [4UT], 10019FC20 [4UT]
18	*CE04290109	PER: 10018FC20 [6UT]

CODE 10014FC20, 10016FC20, 10017FC20, 10018FC20, 10019FC20

BESCHREIBUNG: FILTER JUPITER ABDECKUNG SCHRAUBEN



## DEUTSCH

POS	CODE	BESCHREIBUNG	MENGE	POS	CODE	BESCHREIBUNG	MENGE
1	CE04180405	MANOMETER 1/8" 3 KG/C "		14	CE04300707	ROHR HART L - 845	
2	CE04180404	MANOMETER KOMPLETT		15	* CE04260009	SET WASSERVERTEILER D. 450	
3	CE04190325	GRUPPE ABDECKUNG TRANSPARENT		15	* CE04010119	SET WASSERVERTEILER D. 600	
4	CE04160849	FIXIERRING ABDECKUNG		15	* CE04010303	SET WASSERVERTEILER 18	
5	CE04190303	ABDECKUNG TRANSPARENT D. 220 UND I		15	* CE04010120	SET WASSERVERTEILER D. 750	
6	CE04260106	DICHTUNG FIXIERRING VENTIL		15	* CE04010304	SET WASSERVERTEILER 33	
7	CE04160809	FILTERRING 20 SCHRAUBEN		16	* CE04260015	SET SAMMELROHR D. 450	
8	CE04020116	O-RING 255 X 4		16	* CE04010305	SAMMELROHRSET 14	
9	CE04040115	O-RING D. 60 X 8		16	* CE04010306	SAMMELROHRSET 18	
10	* CE04040103	GEWINDESTÜCK 1 1/2" UND O-RIN "		16	* CE04010307	SAMMELROHRSET 22	
10	* CE04040112	GEWINDESTÜCK AUSGANG 2" UND O-RIN		16	* CE04010358	SAMMELROHRSET MODEL 33	
11	CE04010005	SET ABLASS		17	* CE04010025	SET FILTERSTERN-SCHLITZROHR D. 400	
12	* CE04301004	KEGEL WASSERVERTEILER D. 50		17	* CE04010026	SET FILTERSTERN-SCHLITZROHR	

\* SIEHE ANMERKUGSBLATT

CODE **10014FC20, 10016FC20, 10017FC20, 10018FC20, 10019FC20**

BESCHREIBUNG: **FILTER JUPITER ABDECKUNG SCHRAUBEN**

12	* CE04300910	KEGEL WASSERVERTEILER D. 63	17	* CE04010048	SET FILTERSTERN-SCHLITZROHR D. 750
13	CE04040108	ENTLÜFTUNG	18	* CE04300917	FILTERSTERN-SCHLITZROHR 1" 110 M "
18	* CE04300915	FILTERSTERN-SCHLITZROHR 1" 175 M "	18	* CE04290109	FILTERSTERN-SCHLITZROHR 1" 265 M "

CODE **10014FC20, 10016FC20, 10017FC20, 10018FC20, 10019FC20**

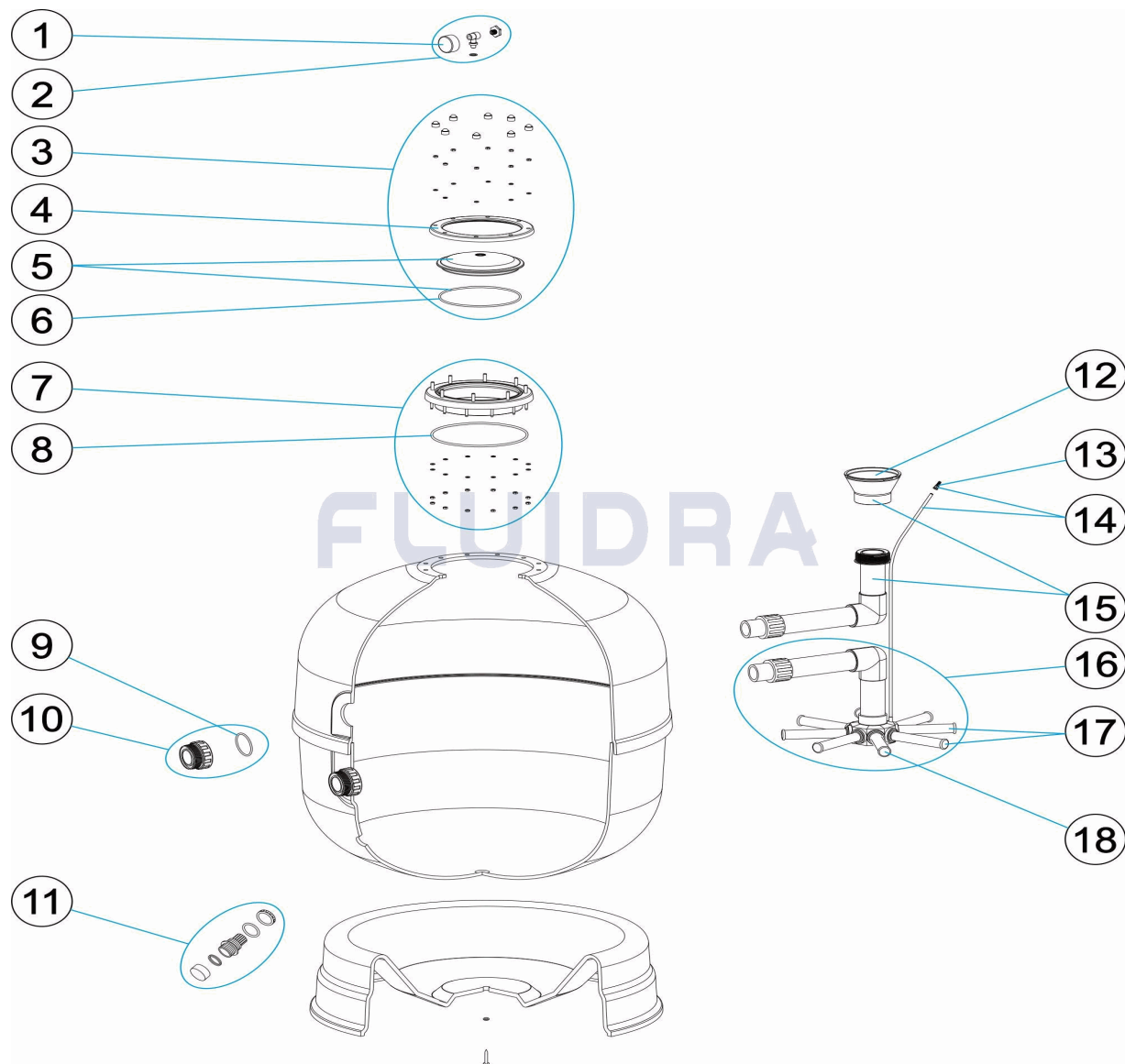
BESCHREIBUNG: **FILTER JUPITER ABDECKUNG SCHRAUBEN**

## HINWEISE

POS	CODE	HINWEISE
10	*CE04040103	FÜR: 10014FC20, 10016FC20
10	*CE04040112	FÜR: 10017FC20, 10018FC20, 10019FC20
12	*CE04301004	FÜR: 10014FC20, 10016FC20
12	*CE04300910	FÜR: 10017FC20, 10018FC20, 10019FC20
15	*CE04260009	FÜR: 10014FC20
15	*CE04010119	FÜR: 10016FC20
15	*CE04010303	FÜR: 10019FC20
15	*CE04010120	FÜR: 10017FC20
15	*CE04010304	FÜR: 10018FC20
16	*CE04260015	FÜR: 10014FC20
16	*CE04010305	FÜR: 10016FC20
16	*CE04010306	FÜR: 10019FC20
16	*CE04010307	FÜR: 10017FC20
16	*CE04010358	FÜR: 10018FC20
17	*CE04010025	FÜR: 10014FC20, 10016FC20
17	*CE04010026	FÜR: 10017FC20, 10019FC20
17	*CE04010048	FÜR: 10018FC20
18	*CE04300917	FÜR: 10014FC20 [4UT], 10016FC20 [4UT]
18	*CE04300915	FÜR: 10017FC20 [4UT], 10019FC20 [4UT]
18	*CE04290109	FÜR: 10018FC20 [6UT]

CODIGO **10014FC20, 10016FC20, 10017FC20, 10018FC20, 10019FC20**

DESCRIÇÃO: **FILTRO JUPITER TAMPA PARAFUSOS**



### PORTUGUES

POS	CODIGO	DESCRIÇÃO	JANTIDADE	POS	CODIGO	DESCRIÇÃO	JANTIDADE
1	CE04180405	MANOMETRO 1/8" 3 KG./C "		14	CE04300707	TUBO RÍGIDO L-845	
2	CE04180404	MANÓMETRO COMPLETO		15	* CE04260009	CJTO. DIFUSOR D. 450	
3	CE04190325	CONJUNTO TAMPA TRANSPARENTE		15	* CE04010119	CJTO. DIFUSOR D. 600	
4	CE04160849	ARO FIXAÇÃO TAMPA		15	* CE04010303	CJTO. DIFUSOR 18	
5	CE04190303	TAMPA TRANSPARENTE D.220 + JUNTA		15	* CE04010120	CJTO. DIFUSOR D. 750	
6	CE04260106	JUNTA ARO FIXAÇÃO VALVULA TOP		15	* CE04010304	CJTO. DIFUSOR 33	
7	CE04160809	ARO PESCOCOÇO 20 PARAFUSOS		16	* CE04260015	CJTO. COLECTOR D. 450	
8	CE04020116	JUNTA TÓRICA 255X4		16	* CE04010305	CJTO. COLECTOR 14	
9	CE04040115	JUNTA TÓRICA D 60X8		16	* CE04010306	CJTO. COLECTOR 18	
10	* CE04040103	RACORD 1 1/2" JUNTA TORIC "		16	* CE04010307	CJTO. COLECTOR 22	
10	* CE04040112	ACOPLADOR SAÍDA 2" + JUNTA TORIC "		16	* CE04010358	CJTO. COLECTOR MODEL 33	
11	CE04010005	CONJUNTO PURDA		17	* CE04010025	CJTO. BRAÇO COLECTOR D. 400	
12	* CE04301004	CONO DIFUSOR D. 50		17	* CE04010026	CJTO. BRAÇO COLECTOR	

\* VEJA A FICHA DE OBSERVAÇÕES



CODIGO **10014FC20, 10016FC20, 10017FC20, 10018FC20, 10019FC20**DESCRICAÇÃO: **FILTRO JUPITER TAMPA PARAFUSOS**

12	* CE04300910	CONO DIFUSOR D. 63	17	* CE04010048	CJTO. BRAÇO COLECTOR D. 750
13	CE04040108	PURGA AREIA	18	* CE04300917	BRAÇO COLECTOR 1" 110 M "
18	* CE04300915	BRAÇO COLECTOR 1" 175 M "	18	* CE04290109	BRAÇO COLECTOR 1" 265 M/M "

CODIGO **10014FC20, 10016FC20, 10017FC20, 10018FC20, 10019FC20**DESCRIÇÃO: **FILTRO JUPITER TAMPA PARAFUSOS****OBSERVAÇÕES**

POS	CODIGO	OBSERVAÇÕES
10	*CE04040103	PARA: 10014FC20, 10016FC20
10	*CE04040112	PARA: 10017FC20, 10018FC20, 10019FC20
12	*CE04301004	PARA: 10014FC20, 10016FC20
12	*CE04300910	PARA: 10017FC20, 10018FC20, 10019FC20
15	*CE04260009	PARA: 10014FC20
15	*CE04010119	PARA: 10016FC20
15	*CE04010303	PARA: 10019FC20
15	*CE04010120	PARA: 10017FC20
15	*CE04010304	PARA: 10018FC20
16	*CE04260015	PARA: 10014FC20
16	*CE04010305	PARA: 10016FC20
16	*CE04010306	PARA: 10019FC20
16	*CE04010307	PARA: 10017FC20
16	*CE04010358	PARA: 10018FC20
17	*CE04010025	PARA: 10014FC20, 10016FC20
17	*CE04010026	PARA: 10017FC20, 10019FC20
17	*CE04010048	PARA: 10018FC20
18	*CE04300917	PARA: 10014FC20 [4UT], 10016FC20 [4UT]
18	*CE04300915	PARA: 10017FC20 [4UT], 10019FC20 [4UT]
18	*CE04290109	PARA: 10018FC20 [6UT]