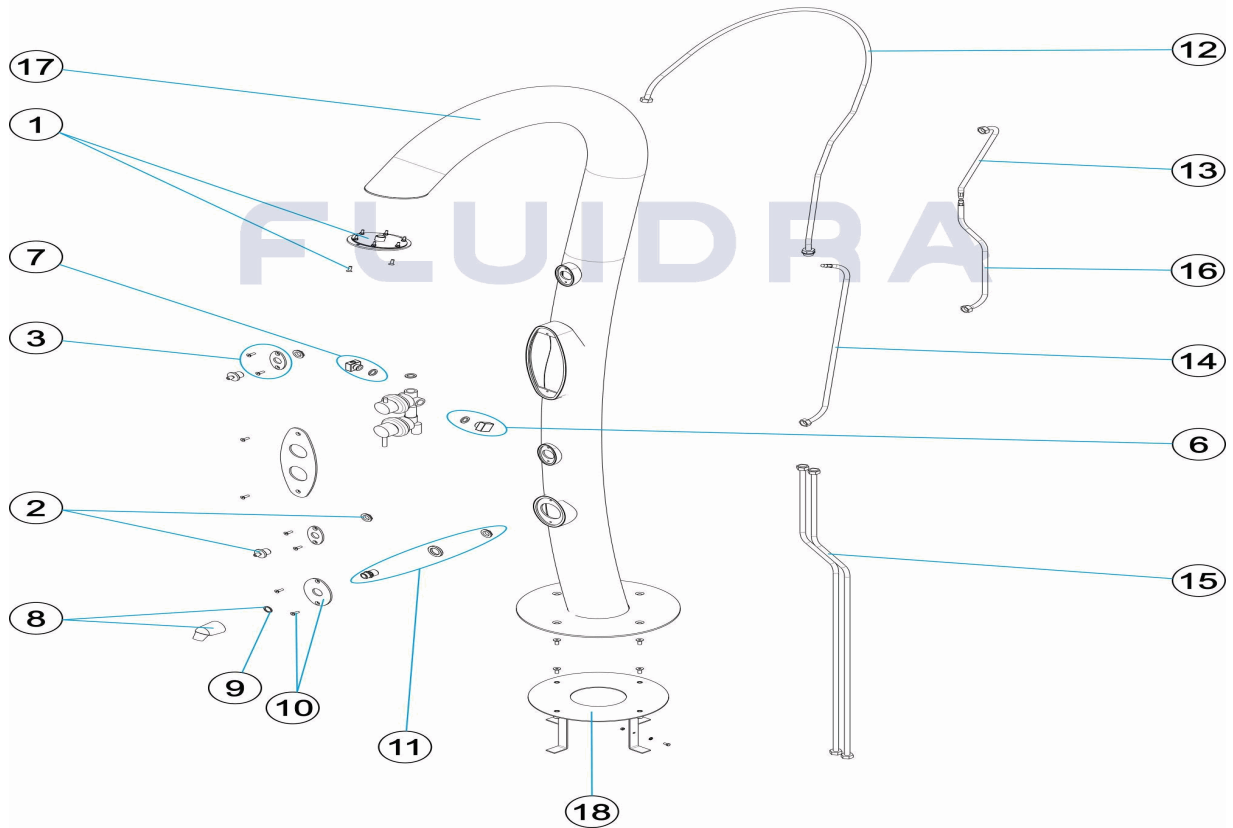
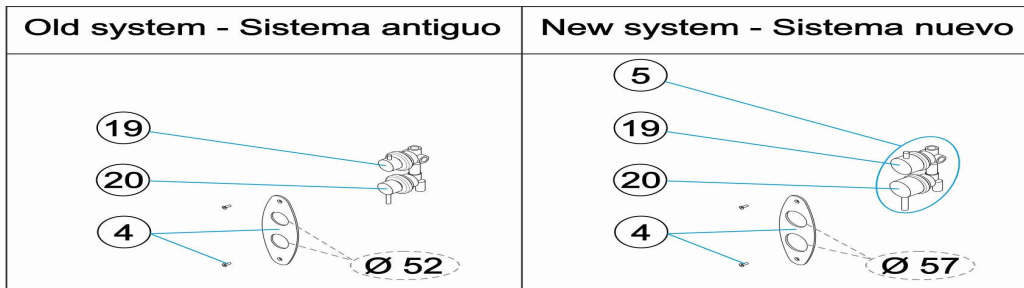


CODIGO **45867**

DESCRIPCION: **DUCHA MISTY ART**



ESPAÑOL

POS	CODIGO	DESCRIPCION	CANTIDAD	POS	CODIGO	DESCRIPCION	CANTIDAD
1	4401040135	PIÑA MISTY		12	4401040145	LATIGUILLO 1/2" MACHO + 1/2" HEMBRA L =	
2	4401040136	BOQUILLA NEBULIZADORA		13	4401040097	LATIGUILLO 1/2" H LOCA M-10 M. L=400"	
3	4401040137	EMBELLECEDOR NEBULIZADOR		14	4401040037	LATIGUILLO 1/2" H. M-10 M. L=800 MM "	
4	* 4401040138	EMBELLECEDOR MONOMANDO Ø 52		15	4401040055	LATIGUILLO 1/2" HEMBRA + 1/2" MACHO L=40	
4	* 4401040271	EMBELLECEDOR MONOMANDO Ø 57		16	4401040146	LATIGUILLO 1/2" HEMBRA +M10 MACHO L=	
5	* 4401040268	MONOMANDO COMPLETO		17	45867R0100	CUERPO DUCHA	
6	4401040140	CONEXIÓN MONOMANDO		18	45867R0810	ANCLAJE	
7	4401040141	CONEXIÓN NEBULIZADORES		19	* 4401040272	CARTUCHO DISTRIBUIDOR	
8	4401040142	ROCIADOR LAVAPIES		19	* 4401040273	CARTUCHO DISTRIBUIDOR	
9	4401040011	JUNTA PLANA		20	* 4401040270	CARTUCHO MONOMANDO	
10	4401040143	EMBELLECEDOR LAVAPIES		20	* 4401040269	CARTUCHO MONOMANDO	
11	4401040144	CONEXION ROCIADOR					

CODIGO 45867

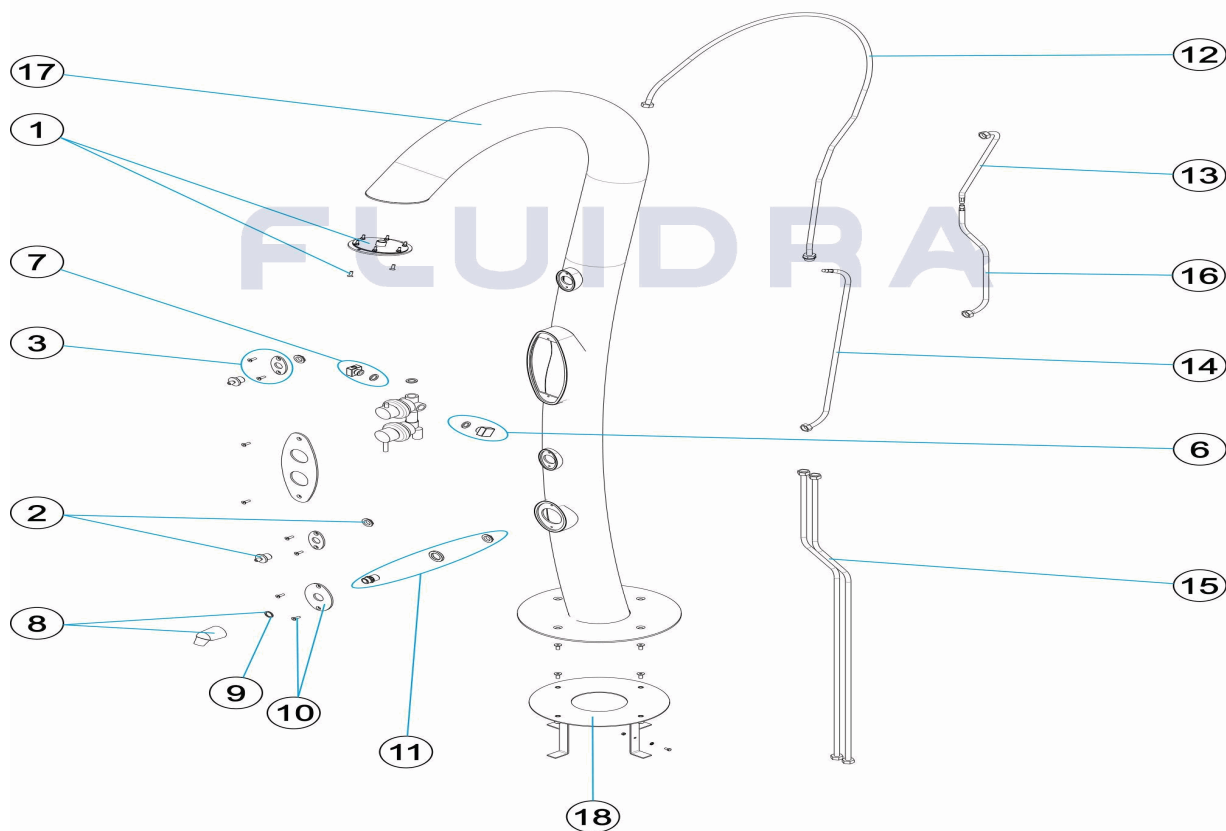
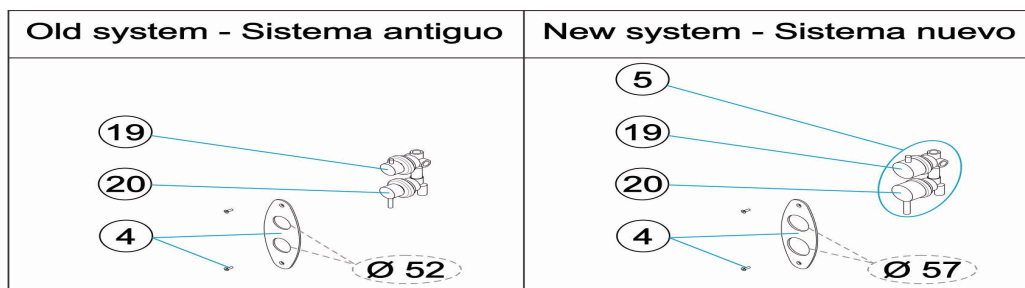
DESCRIPCION: DUCHA MISTY ART

OBSERVACIONES

POS	CODIGO	OBSERVACIONES
4	* 4401040138	PARA: Ø52
4	* 4401040271	PARA: Ø57
5	* 4401040268	PARA: Ø57
19	* 4401040272	PARA: Ø52
19	* 4401040273	PARA: Ø57
20	* 4401040270	PARA: Ø52
20	* 4401040269	PARA: Ø57

CODE 45867

DESCRIPTION: DOUCHE MISTY ART



FRANCAIS

POS	CODE	DESCRIPTION	QUANTITE	POS	CODE	DESCRIPTION	QUANTITE
1	4401040135	POMMEAU DE DOUCHE MISTY		12	4401040145	TUYAU 1/2" FEMELLE + M-10 MÂLE L=1700	
2	4401040136	BUSE NÉBULISATION		13	4401040097	FLEXIBLE 1/2" H LOCA M-10 M. L=400"	
3	4401040137	ENJOLIVEUR PULVÉRISATEUR		14	4401040037	TUYAU 1/2" FEMELLE + M-10 MÂLE L=800"	
4	* 4401040138	ENJOLIVEUR MITIGEUR Ø 52		15	4401040055	FLEXIBLE	
4	* 4401040271	ENJOLIVEUR MITIGEUR Ø 57		16	4401040146	TUYAU 1/2" FEMELLE + M-10 MÂLE L=550	
5	* 4401040268	COMMANDE DOUCHE COMPLETE		17	45867R0100	CORPS DE DOUCHE	
6	4401040140	CONNEXION ROBINET MITIGEUR		18	45867R0810	ANCRAGE	
7	4401040141	CONNEXION PULVÉRISATEURS		19	* 4401040272	CARTOUCHE DISTRIBUTEUR	
8	4401040142	ROBINET RINCE-PIEDS		19	* 4401040273	CARTOUCHE DISTRIBUTEUR	
9	4401040011	JOINT PLAT		20	* 4401040270	CARTOUCHE MONOCOMMANDE	
10	4401040143	ENJOLIVEUR RINCE-PIEDS		20	* 4401040269	CARTOUCHE MONOCOMMANDE	
11	4401040144	CONNEXION ENTREE					

CODE **45867**

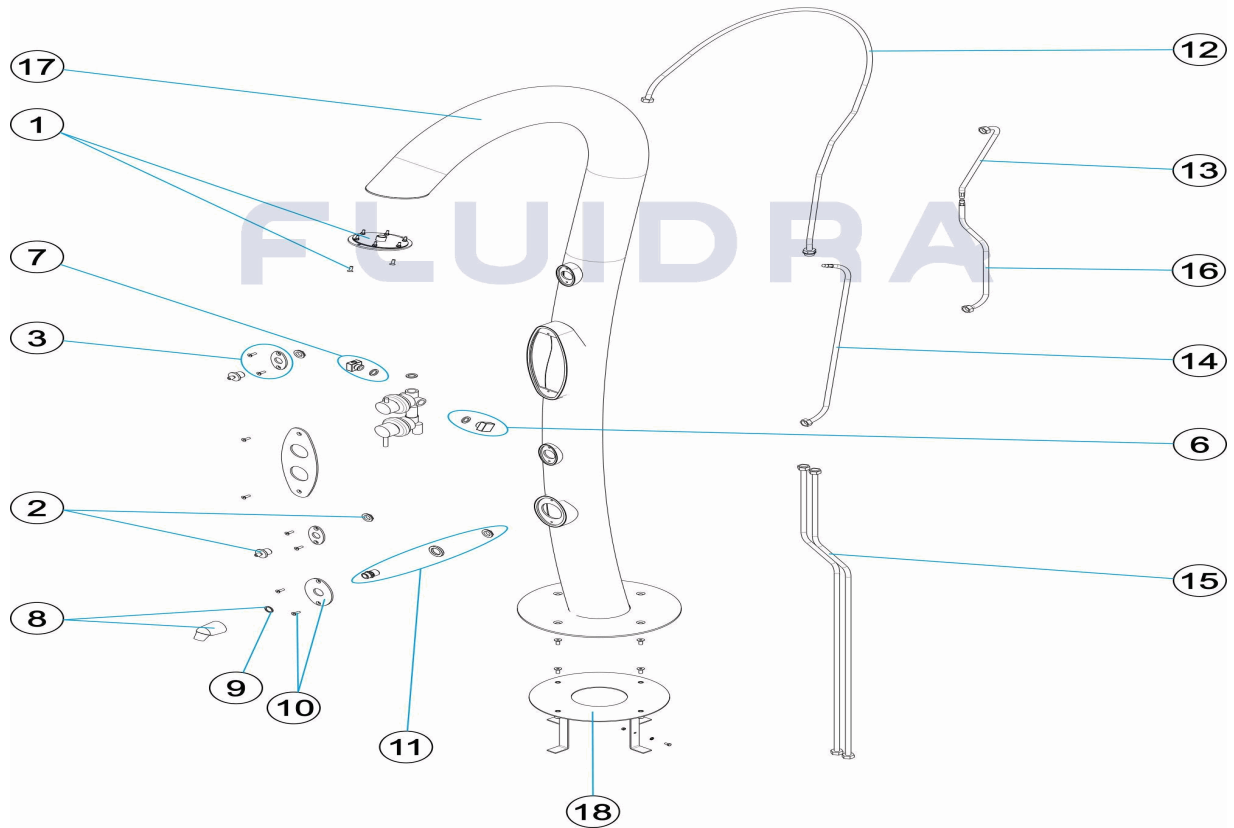
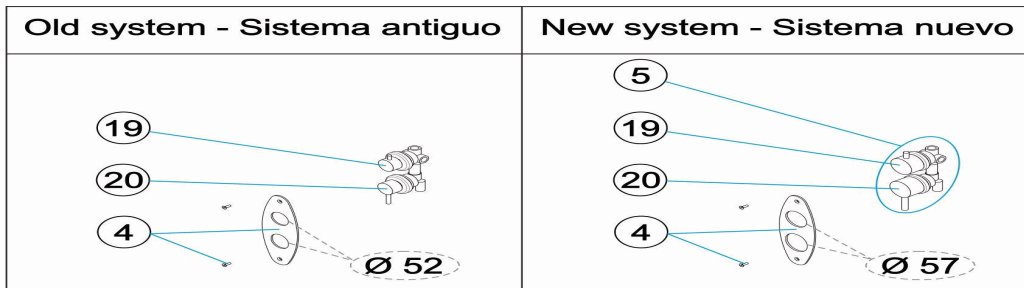
DESCRIPTION: **DOUCHE MISTY ART**

OBSERVATIONS

POS	CODE	OBSERVATIONS
4	* 4401040138	POUR: Ø52
4	* 4401040271	POUR: Ø57
5	* 4401040268	POUR: Ø57
19	* 4401040272	POUR: Ø52
19	* 4401040273	POUR: Ø57
20	* 4401040270	POUR: Ø52
20	* 4401040269	POUR: Ø57

CODE 45867

DESCRIPTION: MISTY ART SHOWER



ENGLISH

POS	CODE	DESCRIPTION	QUANTITY	POS	CODE	DESCRIPTION	QUANTITY
1	4401040135	MISTY SHOWER HEAD		12	4401040145	FLEXIBLE HOSE 1/2" FEMALE + M-10 MALE	
2	4401040136	NEBULISER NOZZLE		13	4401040097	1/2" H LOCA M-10 M. L=400 CABL "	
3	4401040137	NEBULISER TRIM		14	4401040037	FLEXIBLE HOSE 1/2" FEMALE + M-10 MALE	
4	* 4401040138	SINGLE-LEVER TRIM COVER Ø 52		15	4401040055	BRAIDED HOSE	
4	* 4401040271	SINGLE-LEVER TRIM COVER Ø 57		16	4401040146	FLEXIBLE HOSE 1/2" FEMALE + M-10 MALE	
5	* 4401040268	COMPLETE SINGLE-HANDLE UNIT		17	45867R0100	BODY SHOWER	
6	4401040140	SINGLE-LEVER CONNECTOR		18	45867R0810	ANCHOR	
7	4401040141	NEBULISER CONNECTOR		19	* 4401040272	CARTRIDGE DISTRIBUTOR	
8	4401040142	FOOTWASH SPRAY		19	* 4401040273	CARTRIDGE DISTRIBUTOR	
9	4401040011	FLAT GASKET		20	* 4401040270	SINGLE-LEVER CARTRIDGE	
10	4401040143	FOOTWASH TRIM		20	* 4401040269	SINGLE-LEVER CARTRIDGE	
11	4401040144	SPRAY CONNECTION					

CODE **45867**

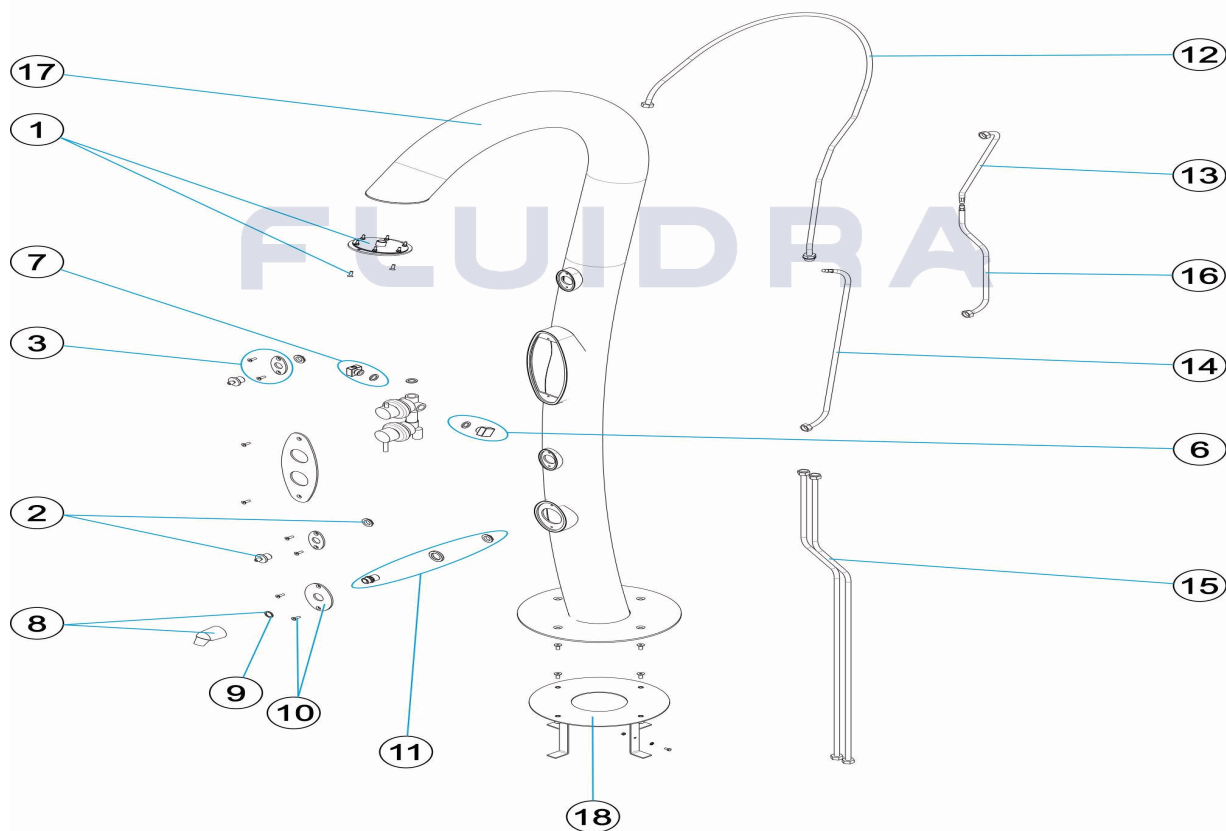
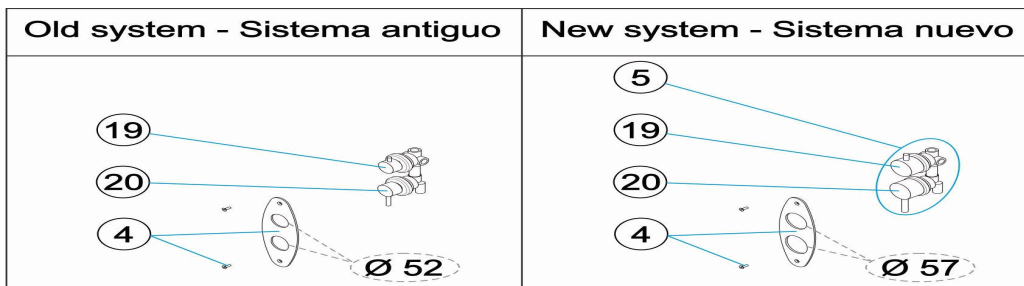
DESCRIPTION: **MISTY ART SHOWER**

OBSERVATIONS

POS	CODE	OBSERVATIONS
4	* 4401040138	FOR: Ø52
4	* 4401040271	FOR: Ø57
5	* 4401040268	FOR: Ø57
19	* 4401040272	FOR: Ø52
19	* 4401040273	FOR: Ø57
20	* 4401040270	FOR: Ø52
20	* 4401040269	FOR: Ø57

CODICE 45867

DESCRIZIONE: DOCCIA MISTY ART



ITALIANO

POS	CODICE	DESCRIZIONE	QUANTITA'	POS	CODICE	DESCRIZIONE	QUANTITA'
1	4401040135	DIFFUSORE DOCCIA MISTY		12	4401040145	SPINOTTO 1/2" FEMMINA + M-10 MASCHIO	
2	4401040136	BOCCHETTA NEBULIZZATA		13	4401040097	CAVETTO 1/2" H LOCA M-10 M. L=400"	
3	4401040137	RIVESTIMENTO NEBULIZZATORE		14	4401040037	SPINOTTO 1/2" FEMMINA + M-10 MASCHIO	
4	* 4401040138	IMBELLITORE MONOCOMANDO Ø 52		15	4401040055	FLESSIBILE	
4	* 4401040271	IMBELLITORE MONOCOMANDO Ø 57		16	4401040146	SPINOTTO 1/2" FEMMINA + M-10 MASCHIO	
5	* 4401040268	RUBINETTO COMPLETO		17	45867R0100	CORPO DOCCIA	
6	4401040140	CONNESSIONE MONOCOMANDO		18	45867R0810	ANCORAGGIO	
7	4401040141	CONNESSIONE NEBULIZZATORE		19	* 4401040272	CARTUCCIA DISTRIBUTORE	
8	4401040142	SPRUZZATORE LAVAPIEDI		19	* 4401040273	CARTUCCIA DISTRIBUTORE	
9	4401040011	GIUNTURA PIANA		20	* 4401040270	CARTUCCIA MONOCOMANDO	
10	4401040143	RIVESTIMENTO LAVAPIEDI		20	* 4401040269	CARTUCCIA MONOCOMANDO	
11	4401040144	COLLEGAMENTO SOFFIONE					

CODICE **45867**

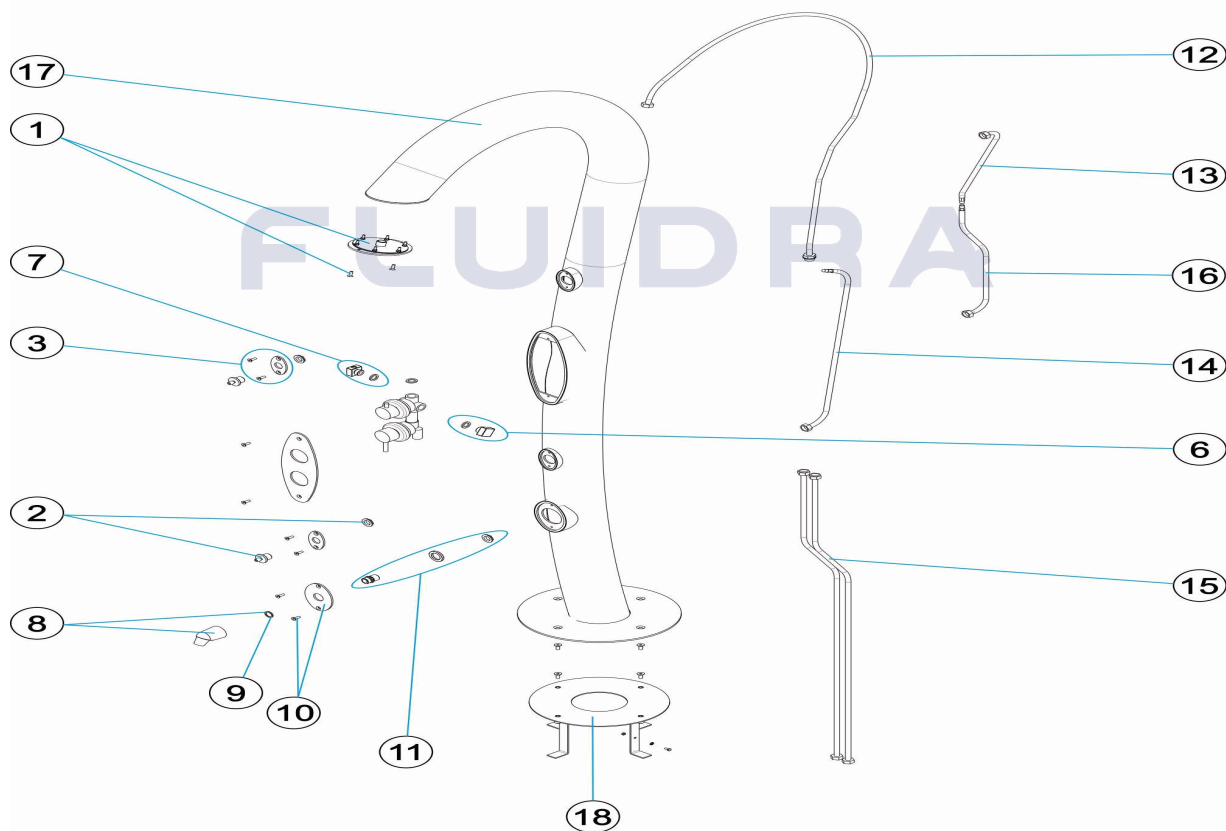
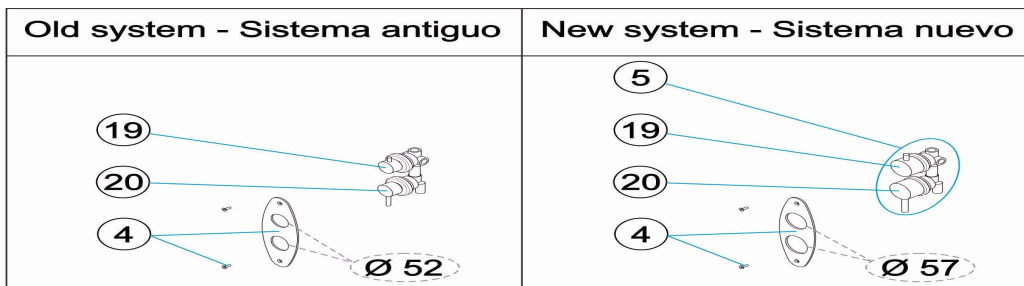
DESCRIZIONE: **DOCCIA MISTY ART**

OSSERVAZIONI

POS	CODICE	OSSERVAZIONI
4	* 4401040138	PER: Ø52
4	* 4401040271	PER: Ø57
5	* 4401040268	PER: Ø57
19	* 4401040272	PER: Ø52
19	* 4401040273	PER: Ø57
20	* 4401040270	PER: Ø52
20	* 4401040269	PER: Ø57

CODE 45867

BESCHREIBUNG: DUSCHE MISTY ART



DEUTSCH

POS	CODE	BESCHREIBUNG	MENGE	POS	CODE	BESCHREIBUNG	MENGE
1	4401040135	DUSCHKOPF MISTY		12	4401040145	SCHLAUCHLEITUNG 1/2" NIPPEL UND 1/2" I	
2	4401040136	SPÜHDÜSE		13	4401040097	SCHLAUCHLEITUNG 1/2" GEWINDEKÖRPEI	
3	4401040137	BLENDE NEBELGERÄT		14	4401040037	SCHLAUCHLEITUNG 1/2" MUFFE M-10 NIPP	
4	* 4401040138	BLENDE EINHANDHEBEL Ø 52		15	4401040055	SCHLAUCHLEITUNG 1/2" MUFFE UND 1/2" I	
4	* 4401040271	BLENDE EINHANDHEBEL Ø 57		16	4401040146	SCHLAUCHLEITUNG 1/2" MUFFE UND M10 I	
5	* 4401040268	EINHANDHEBEL KOMPLETT		17	45867R0100	DUSCHHEINHEIT	
6	4401040140	ANSCHLUSS EINHANDHEBEL		18	45867R0810	VERANKERUNG	
7	4401040141	ANSCHLUSS SPRÜHDÜSEN		19	* 4401040272	KARTUSCHE VERTEILER	
8	4401040142	DUSCHKOPF FUSSDUSCHE		19	* 4401040273	KARTUSCHE VERTEILER	
9	4401040011	FLACHDICHTUNG		20	* 4401040270	KARTUSCHE EINHANDHEBEL	
10	4401040143	BLENDE FUSSDUSCHE		20	* 4401040269	KARTUSCHE EINHANDHEBEL	
11	4401040144	ANSCHLUSS DUSCHKOPF					

CODE **45867**

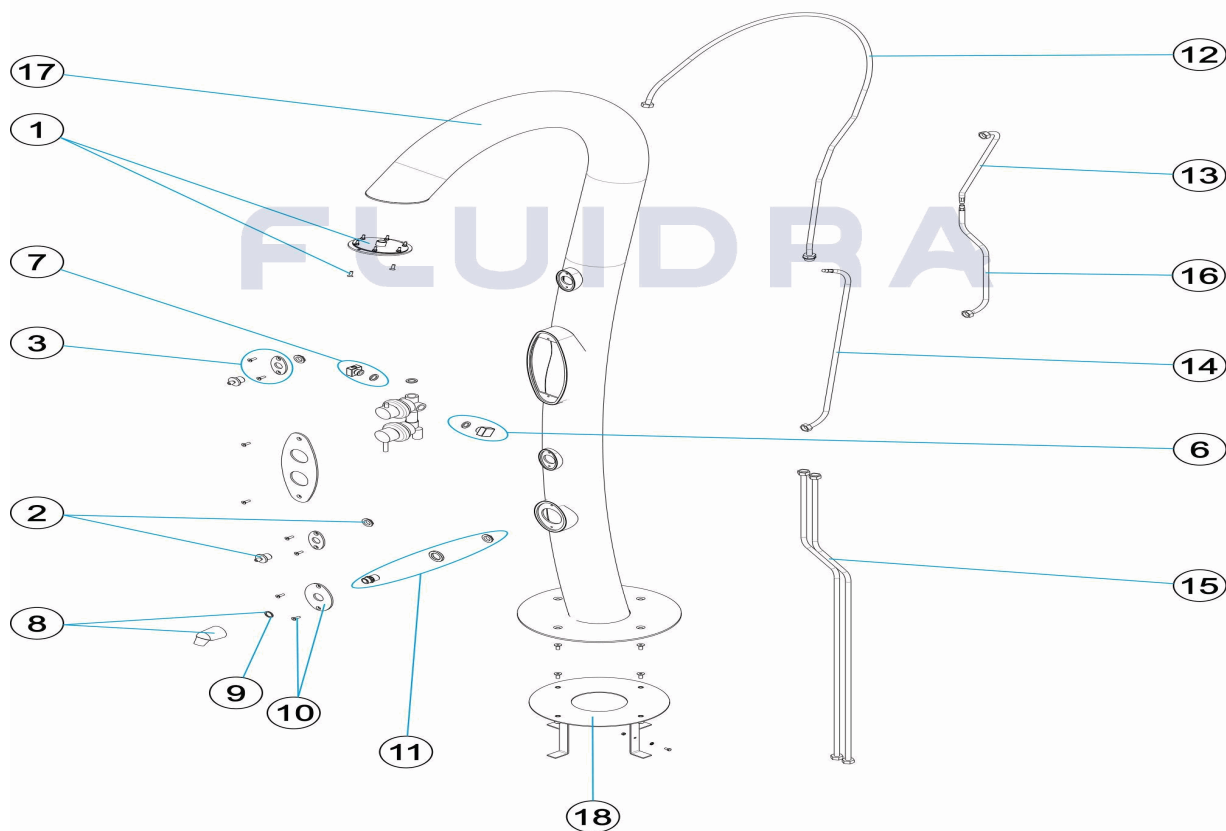
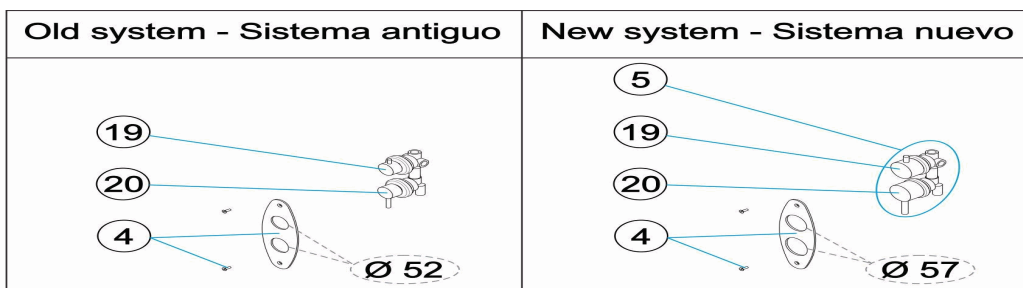
BESCHREIBUNG: **DUSCHE MISTY ART**

HINWEISE

POS	CODE	HINWEISE
4	* 4401040138	FÜR: Ø52
4	* 4401040271	FÜR: Ø57
5	* 4401040268	FÜR: Ø57
19	* 4401040272	FÜR: Ø52
19	* 4401040273	FÜR: Ø57
20	* 4401040270	FÜR: Ø52
20	* 4401040269	FÜR: Ø57

CODIGO **45867**

DESCRIÇÃO: **DUCHE MISTY ART**



PORTUGUES

POS	CODIGO	DESCRIÇÃO	JANTIDADE	POS	CODIGO	DESCRIÇÃO	JANTIDADE
1	4401040135	REGADOR CHUVEIROMISTY		12	4401040145	MANGA 1/2" FÊMEA + M-10 MACHO L=1700	
2	4401040136	BOQUILHA NEBULIZADA		13	4401040097	MANGA 1/2" H LOCA M-10 M. L=400"	
3	4401040137	PLACA DECORATIVA NEBULIZADOR		14	4401040037	MANGA 1/2" FÊMEA + M-10 MACHO L = 800	
4	* 4401040138	ARO DECORATIVO MONOCOMANDO Ø 52		15	4401040055	FLEXO	
4	* 4401040271	ARO DECORATIVO MONOCOMANDO Ø 57		16	4401040146	MANGA 1/2" FÊMEA + M-10 MACHO L=550 I	
5	* 4401040268	MONOCOMANDO COMPLETO		17	45867R0100	CORPO DE CHUVEIRO	
6	4401040140	LIGAÇÃO MONOCOMANDO		18	45867R0810	ANCORA	
7	4401040141	LIGAÇÃO NEBULIZADORES		19	* 4401040272	DISTRIBUIDOR DE CARTUCHO	
8	4401040142	BORRIFADOR LAVA-PÉS		19	* 4401040273	DISTRIBUIDOR DE CARTUCHO	
9	4401040011	BUCHA BORRACHA		20	* 4401040270	CARTUCHO MONOCOMANDO	
10	4401040143	PLACA DECORATIVA LAVA-PÉS		20	* 4401040269	CARTUCHO MONOCOMANDO	
11	4401040144	LIGAÇÃO DE PINHA					

CODIGO **45867**

DESCRIÇÃO: **DUCHE MISTY ART**

OBSERVAÇÕES

POS	CODIGO	OBSERVAÇÕES
4	* 4401040138	PARA: Ø52
4	* 4401040271	PARA: Ø57
5	* 4401040268	PARA: Ø57
19	* 4401040272	PARA: Ø52
19	* 4401040273	PARA: Ø57
20	* 4401040270	PARA: Ø52
20	* 4401040269	PARA: Ø57