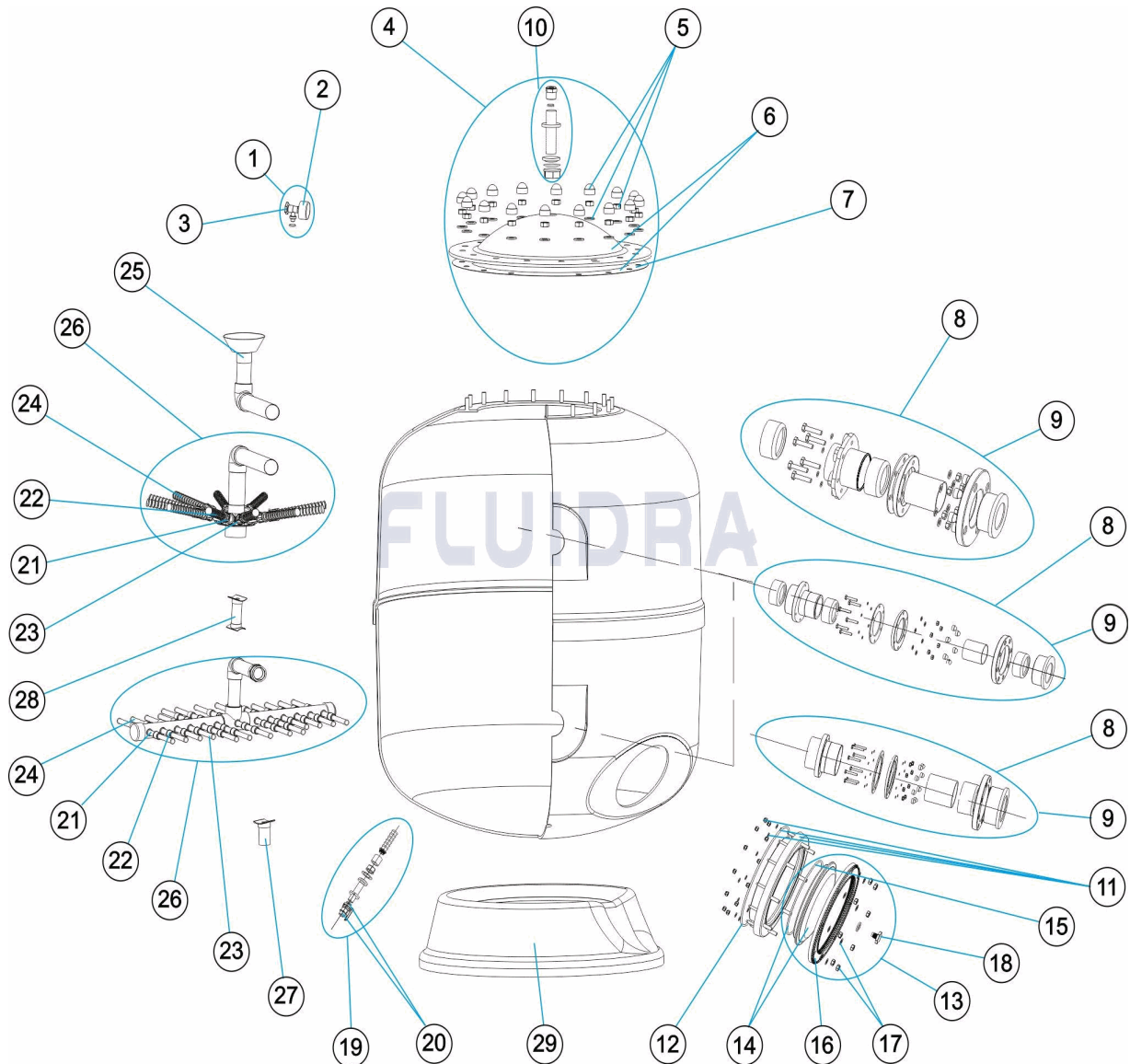


CODIGO

**FFC1050/63, FFC1050/75, FFC1050/90, FFC1200/75, FFC1200/90,
 FFC1400/110, FFC1400/75, FFC1400/90, FFC1600/110, FFC1600/125,
 FFC1600/90, FFC1800/110, FFC1800/125, FFC1800/140, FFC1800/90,
 FFC2000/110, FFC2000/125, FFC2000/140, FFC2000/160**

DESCRIPCION: FILTRO FLORIDA D. 1050-1200-1400-1600-1800-2000


ESPAÑOL

POS	CODIGO	DESCRIPCION	CANTIDAD	POS	CODIGO	DESCRIPCION	CANTIDAD
1	CE04180404	MANOMETRO COMPLETO		8	* CE04160833	CJTO. ENTRADA EUROPE D.110 PARA 1800	
2	CE04180405	MANOMETRO 1/8" 3 KG/C "		8	* CE04160834	CJTO. ENTRADA EUROPE D.125 PARA 1800	
3	CE04290101	TAPON PURGA 1/4" ANONIM "		8	* CE04160816	CJTO. ENTRADA EUROPE D.140 PARA 1800	
4	CE04260207	TAPA FILTRO COMPLETA		8	* CE04160817	CJTO. ENTRADA EUROPE D.160 PARA 2000	
5	CE04160103	TORNILLERIA TAPA FILTRO		9	* CE04160835	CJTO. SALIDA EUROPE D.63 PARA 1050	
6	CE04260208	TAPA FILTRO + JUNTA		9	* CE04160836	CJTO. SALIDA EUROPE D.75 PARA 1050	
7	CE04160101	JUNTA TORICA TAPA		9	* CE04160837	CJTO. SALIDA EUROPE D.90 PARA 1050	
8	* CE04160811	CJTO. ENTRADA EUROPE D.63 PARA 1050		9	* CE04160838	CJTO. SALIDA EUROPE D.75 PARA 1200 - 14	
8	* CE04160812	CJTO. ENTRADA EUROPE D.75 PARA 1050		9	* CE04160839	CJTO. SALIDA EUROPE D.90 PARA 1200 - 14	
8	* CE04160813	CJTO. ENTRADA EUROPE D.90 PARA 1050		9	* CE04160840	CJTO. SALIDA EUROPE D.110 PARA 1400 - 1	

* NOTA OBSERVACIONES

CODIGO FFC1050/63, FFC1050/75, FFC1050/90, FFC1200/75, FFC1200/90, FFC1400/110, FFC1400/75, FFC1400/90, FFC1600/110, FFC1600/125, FFC1600/90, FFC1800/110, FFC1800/125, FFC1800/140, FFC1800/90, FFC2000/110, FFC2000/125, FFC2000/140, FFC2000/160

DESCRIPCION: FILTRO FLORIDA D. 1050-1200-1400-1600-1800-2000

8	* CE04160830	CJTO. ENTRADA EUROPE D. 75 PARA 1200	9	* CE04160841	CJTO. SALIDA EUROPE D.125 PARA 1600
8	* CE04160831	CJTO. ENTRADA EUROPE D.90 PARA 1200	9	* CE04160842	CJTO. SALIDA EUROPE D.90 PARA 1800
8	* CE04160814	CJTO. ENTRADA EUROPE D.110 PARA 1400	9	* CE04160843	CJTO. SALIDA EUROPE D.110 PARA 1800 - 2
8	* CE04160815	CJTO. ENTRADA EUROPE D.125 PARA 1600	9	* CE04160844	CJTO. SALIDA EUROPE D.125 PARA 1800 - 2
8	* CE04160832	CJTO. ENTRADA EUROPE D.90 PARA 1800	9	* CE04160845	CJTO. SALIDA EUROPE D.140 PARA 1800 - 2
9	* CE04160846	CJTO. SALIDA EUROPE D.160 PARA 2000	26	* 105063R0420	CJTO. COLECTOR D.63 PARA 1050
10	CE04260210	FIJACION MANOMETRO	26	* 105075R0420	CJTO. COLECTOR D.75 / 1050
11	CE04160809	ARO CUELLO 20 TORNILLOS	26	* 105090R0420	CJTO. COLECTOR D.90 / 1050
12	CE04020116	JUNTA TORICA 255X4	26	* 120075R0420	CJTO. COLECTOR D.75 / 1200
13	CE04160810	TAPA VACIADO ARENA	26	* 120090R0420	CJTO. COLECTOR D.90 / 1200
14	CE04160847	TAPA FILTRO D. 220 NEGRA	26	* 140075R0420	CJTO. COLECTOR D.75 / 1400
15	CE04260106	JUNTA ARO FIJACION VALVULA	26	* 140090R0420	CJTO. COLECTOR D.90 / 1400
16	CE04160849	ARO FIJACION TAPA	26	* 1400110R0420	CJTO. COLECTOR D.110 / 1400
17	CE04160850	TORNILLERIA FIJACION TAPA M8	26	* 160090R0420	CJTO. COLECTOR D.90 / 1600
18	CE04040113	TAPON PURGA Y JUNTA	26	* 1600110R0420	CJTO. COLECTOR D.110 / 1600
19	CE04160808	PURGA AGUA 3/4"	26	* 1600125R0420	CJTO. COLECTOR D.125 / 1600
20	CE04160807	VALVULA BOLA 3/4"	26	* 180090R0420	CJTO. COLECTOR D.90 / 1800
21	* CE04300916	BRAZO COLECTOR 1" 225 M "	26	* 1800110R0420	CJTO. COLECTOR D.110 / 1800
21	* CE04300915	BRAZO COLECTOR 1" 175 M "	26	* 1800125R0420	CJTO. COLECTOR D.125 / 1800
21	* CE04290109	BRAZO COLECTOR 1" 265 M "	26	* 1800140R0420	CJTO. COLECTOR D.140 / 1800
22	* CE04260418	MANGUITO ENLACE UNION 1"	26	* 2000110R0420	CJTO. COLECTOR D.110 / 2000
23	* CE04260419	BRAZO COLECTOR 1" 100 M "	26	* 2000125R0420	CJTO. COLECTOR D.125 / 2000
24	* CE04260401	CJTO. BRAZOS COLECTOR D. 950 - 1050	26	* 2000140R0420	CJTO. COLECTOR D.140 / 2000
24	* CE04260402	CJTO. BRAZOS COLECTOR D.1200	26	* 2000160R0420	CJTO. COLECTOR D.160 / 2000
24	* CE04260403	CJTO. BRAZOS COLECTOR D.1400	27	* 180090R0422	SOPORTE COLECTOR D.90 - 1800
24	* CE04260404	CJTO. BRAZOS COLECTOR D.1600	27	* 1800110R0422	SOPORTE COLECTOR D.110 - 1800
24	* CE04260405	CJTO. BRAZOS COLECTOR D.1800	27	* 1800125R0422	SOPORTE COLECTOR D.125 - 1800
24	* CE04260406	CJTO. BRAZOS COLECTOR D.2000	27	* 1800140R0422	SOPORTE COLECTOR D.140 - 1800
25	* 105063R0430	CJTO. DIFUSOR D.63 / 1050	27	* 2000110R0422	SOPORTE COLECTOR D.110 - 2000
25	* 105075R0430	CJTO. DIFUSOR D.75 / 1050	27	* 2000125R0422	SOPORTE COLECTOR D.125 - 2000
25	* 105090R0430	CJTO. DIFUSOR D.90 / 1050	27	* 2000140R0422	SOPORTE COLECTOR D.140 - 2000
25	* 120075R0430	CJTO. DIFUSOR D.75 / 1200	27	* 2000160R0422	SOPORTE COLECTOR D.160 - 2000
25	* 120090R0430	CJTO. DIFUSOR D.90 / 1200	28	* 180090R0423	SOPORTE DIFUSOR D.90 - 1800
25	* 140075R0430	CJTO. DIFUSOR D.75 / 1400	28	* 1800110R0423	SOPORTE DIFUSOR D.110 - 1800
25	* 140090R0430	CJTO. DIFUSOR D.90 / 1400	28	* 1800125R0423	SOPORTE DIFUSOR D.125 - 1800
25	* 1400110R0430	CJTO. DIFUSOR D.110 / 1400	28	* 1800140R0423	SOPORTE DIFUSOR D.140 - 1800
25	* 160090R0430	CJTO. DIFUSOR D.90 / 1600	28	* 2000110R0423	SOPORTE DIFUSOR D.110 - 2000
25	* 1600110R0430	CJTO. DIFUSOR D.110 / 1600	28	* 2000125R0423	SOPORTE DIFUSOR D.125 - 2000
25	* 1600125R0430	CJTO. DIFUSOR D.125/ 1600	28	* 2000140R0423	SOPORTE DIFUSOR D.140 - 2000
25	* 180090R0430	CJTO. DIFUSOR D.90 / 1800	28	* 2000160R0423	SOPORTE DIFUSOR D.160 - 2000
25	* 1800110R0430	CJTO. DIFUSOR D.110 / 1800	29	* 00687R0101	PIE FILTRO 1.050
25	* 1800125R0430	CJTO. DIFUSOR D.125 / 1800	29	* 00546R0101	PIE FILTRO D.1200
25	* 1800140R0430	CJTO. DIFUSOR D.140 / 1800	29	* 00689R0101	PIE FILTRO D.1400
25	* 2000110R0430	CJTO. DIFUSOR D.110 / 2000	29	* 00690R0101	PIE FILTRO D.1600
25	* 2000125R0430	CJTO. DIFUSOR D.125 / 2000	29	* 00691R0101	PIE FILTRO 1.800
25	* 2000140R0430	CJTO. DIFUSOR D.140 / 2000	29	* 00692R0101	PIE FILTRO D.2000
25	* 2000160R0430	CJTO. DIFUSOR D.160 / 2000			

CODIGO **FFC1050/63, FFC1050/75, FFC1050/90, FFC1200/75, FFC1200/90, FFC1400/110, FFC1400/75, FFC1400/90, FFC1600/110, FFC1600/125, FFC1600/90, FFC1800/110, FFC1800/125, FFC1800/140, FFC1800/90, FFC2000/110, FFC2000/125, FFC2000/140, FFC2000/160**

DESCRIPCION: FILTRO FLORIDA D. 1050-1200-1400-1600-1800-2000

OBSERVACIONES

POS	CODIGO	OBSERVACIONES
8	* CE04160811	PARA: FFC1050/63
8	* CE04160812	PARA: FFC1050/75
8	* CE04160813	PARA: FFC1050/90
8	* CE04160830	PARA: FFC1200/75, FFC1400/75
8	* CE04160831	PARA: FFC1200/90, FFC1400/90, FFC1600/90
8	* CE04160814	PARA: FFC1400/110, FFC1600/110
8	* CE04160815	PARA: FFC1600/125
8	* CE04160832	PARA: FFC1800/90
8	* CE04160833	PARA: FFC1800/110, FFC2000/110
8	* CE04160834	PARA: FFC1800/125, FFC2000/125
8	* CE04160816	PARA: FFC1800/140, FFC2000/140
8	* CE04160817	PARA: FFC2000/160
9	* CE04160835	PARA: FFC1050/63
9	* CE04160836	PARA: FFC1050/75
9	* CE04160837	PARA: FFC1050/90
9	* CE04160838	PARA: FFC1200/75, FFC1400/75
9	* CE04160839	PARA: FFC1200/90, FFC1400/90, FFC1600/90
9	* CE04160840	PARA: FFC1400/110, FFC1600/110
9	* CE04160841	PARA: FFC1600/125
9	* CE04160842	PARA: FFC1800/90
9	* CE04160843	PARA: FFC1800/110, FFC2000/110
9	* CE04160844	PARA: FFC1800/125, FFC2000/125
9	* CE04160845	PARA: FFC1800/140, FFC2000/140
9	* CE04160846	PARA: FFC2000/160
21	* CE04300916	PARA: FFC1050/63 [6UNIDADES], FFC1050/75 [6UNIDADES], FFC1050/90 [6UNIDADES], FFC1400/110 [6UNIDADES], FFC1400/75 [6UNIDADES], FFC1400/90 [6UNIDADES], FFC1800/110 [6UNIDADES], FFC1800/125 [6UNIDADES], FFC1800/140 [6UNIDADES], FFC1800/90 [6UNIDADES], FFC2000/110 [9UNIDADES], FFC2000/125 [9UNIDADES], FFC2000/140 [9UNIDADES], FFC2000/160 [9UNIDADES]
21	* CE04300915	PARA: FFC1800/110 [7UNIDADES], FFC1800/125 [7UNIDADES], FFC1800/140 [7UNIDADES], FFC1800/90 [7UNIDADES]
21	* CE04290109	PARA: FFC1200/75 [6UNIDADES], FFC1200/90 [6UNIDADES], FFC1600/110 [6UNIDADES], FFC1600/125 [6UNIDADES], FFC1600/90 [6UNIDADES], FFC2000/110 [4UNIDADES], FFC2000/125 [4UNIDADES], FFC2000/140 [4UNIDADES], FFC2000/160 [4UNIDADES]
22	* CE04260418	PARA: FFC1050/63 [3UNIDADES], FFC1050/75 [3UNIDADES], FFC1050/90 [3UNIDADES], FFC1200/75 [3UNIDADES], FFC1200/90 [3UNIDADES], FFC1400/110 [6UNIDADES], FFC1400/75 [6UNIDADES], FFC1400/90 [6UNIDADES], FFC1600/110 [6UNIDADES], FFC1600/125 [6UNIDADES], FFC1600/90 [6UNIDADES], FFC1800/110 [14UNIDADES], FFC1800/125 [14UNIDADES], FFC1800/140 [14UNIDADES], FFC1800/90 [14UNIDADES], FFC2000/110 [20UNIDADES], FFC2000/125 [20UNIDADES], FFC2000/140 [20UNIDADES], FFC2000/160 [20UNIDADES]
23	* CE04260419	PARA: FFC1050/63 [3UNIDADES], FFC1050/75 [3UNIDADES], FFC1050/90 [3UNIDADES], FFC1200/75 [3UNIDADES], FFC1200/90 [3UNIDADES], FFC1400/110 [6UNIDADES], FFC1400/75 [6UNIDADES], FFC1400/90 [6UNIDADES], FFC1600/110 [6UNIDADES], FFC1600/125 [6UNIDADES], FFC1600/90 [6UNIDADES], FFC1800/110 [14UNIDADES], FFC1800/125 [14UNIDADES], FFC1800/140 [14UNIDADES], FFC1800/90 [14UNIDADES], FFC2000/110 [20UNIDADES], FFC2000/125 [20UNIDADES], FFC2000/140 [20UNIDADES], FFC2000/160 [20UNIDADES]
24	* CE04260401	PARA: FFC1050/63, FFC1050/75, FFC1050/90
24	* CE04260402	PARA: FFC1200/75, FFC1200/90
24	* CE04260403	PARA: FFC1400/110, FFC1400/75, FFC1400/90

CODIGO **FFC1050/63, FFC1050/75, FFC1050/90, FFC1200/75, FFC1200/90,
FFC1400/110, FFC1400/75, FFC1400/90, FFC1600/110, FFC1600/125,
FFC1600/90, FFC1800/110, FFC1800/125, FFC1800/140, FFC1800/90,
FFC2000/110, FFC2000/125, FFC2000/140, FFC2000/160**

DESCRIPCION: FILTRO FLORIDA D. 1050-1200-1400-1600-1800-2000

24	* CE04260404	PARA: FFC1600/110, FFC1600/125, FFC1600/90
24	* CE04260405	PARA: FFC1800/110, FFC1800/125, FFC1800/140, FFC1800/90
24	* CE04260406	PARA: FFC2000/110, FFC2000/125, FFC2000/140, FFC2000/160
25	* 105063R0430	PARA: FFC1050/63
25	* 105075R0430	PARA: FFC1050/75
25	* 105090R0430	PARA: FFC1050/90
25	* 120075R0430	PARA: FFC1200/75
25	* 120090R0430	PARA: FFC1200/90
25	* 140075R0430	PARA: FFC1400/75
25	* 140090R0430	PARA: FFC1400/90
25	* 1400110R0430	PARA: FFC1400/110
25	* 160090R0430	PARA: FFC1600/90
25	* 1600110R0430	PARA: FFC1600/110
25	* 1600125R0430	PARA: FFC1600/125
25	* 180090R0430	PARA: FFC1800/90
25	* 1800110R0430	PARA: FFC1800/110
25	* 1800125R0430	PARA: FFC1800/125
25	* 1800140R0430	PARA: FFC1800/140
25	* 2000110R0430	PARA: FFC2000/110
25	* 2000125R0430	PARA: FFC2000/125
25	* 2000140R0430	PARA: FFC2000/140
25	* 2000160R0430	PARA: FFC2000/160
26	* 105063R0420	PARA: FFC1050/63
26	* 105075R0420	PARA: FFC1050/75
26	* 105090R0420	PARA: FFC1050/90
26	* 120075R0420	PARA: FFC1200/75
26	* 120090R0420	PARA: FFC1200/90
26	* 140075R0420	PARA: FFC1400/75
26	* 140090R0420	PARA: FFC1400/90
26	* 1400110R0420	PARA: FFC1400/110
26	* 160090R0420	PARA: FFC1600/90
26	* 1600110R0420	PARA: FFC1600/110
26	* 1600125R0420	PARA: FFC1600/125
26	* 180090R0420	PARA: FFC1800/90
26	* 1800110R0420	PARA: FFC1800/110
26	* 1800125R0420	PARA: FFC1800/125
26	* 1800140R0420	PARA: FFC1800/140
26	* 2000110R0420	PARA: FFC2000/110
26	* 2000125R0420	PARA: FFC2000/125
26	* 2000140R0420	PARA: FFC2000/140
26	* 2000160R0420	PARA: FFC2000/160
27	* 180090R0422	PARA: FFC1800/90
27	* 1800110R0422	PARA: FFC1800/110
27	* 1800125R0422	PARA: FFC1800/125

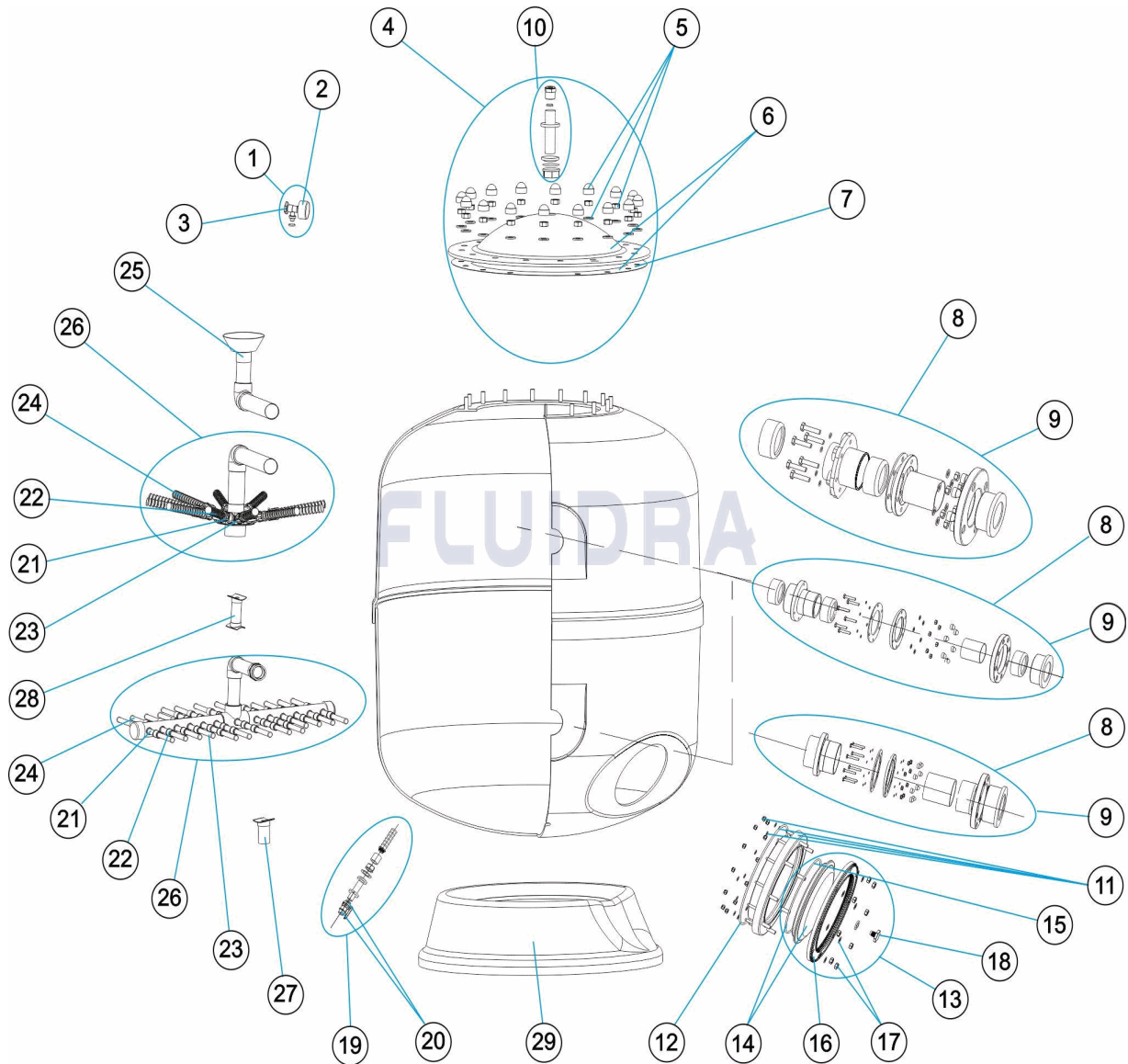
CODIGO **FFC1050/63, FFC1050/75, FFC1050/90, FFC1200/75, FFC1200/90,
FFC1400/110, FFC1400/75, FFC1400/90, FFC1600/110, FFC1600/125,
FFC1600/90, FFC1800/110, FFC1800/125, FFC1800/140, FFC1800/90,
FFC2000/110, FFC2000/125, FFC2000/140, FFC2000/160**

DESCRIPCION: FILTRO FLORIDA D. 1050-1200-1400-1600-1800-2000

27	* 1800140R0422	PARA: FFC1800/140
27	* 2000110R0422	PARA: FFC2000/110
27	* 2000125R0422	PARA: FFC2000/125
27	* 2000140R0422	PARA: FFC2000/140
27	* 2000160R0422	PARA: FFC2000/160
28	* 180090R0423	PARA: FFC1800/90
28	* 1800110R0423	PARA: FFC1800/110
28	* 1800125R0423	PARA: FFC1800/125
28	* 1800140R0423	PARA: FFC1800/140
28	* 2000110R0423	PARA: FFC2000/110
28	* 2000125R0423	PARA: FFC2000/125
28	* 2000140R0423	PARA: FFC2000/140
28	* 2000160R0423	PARA: FFC2000/160
29	* 00687R0101	PARA: FFC1050/63, FFC1050/75, FFC1050/90
29	* 00546R0101	PARA: FFC1200/75, FFC1200/90
29	* 00689R0101	PARA: FFC1400/110, FFC1400/75, FFC1400/90
29	* 00690R0101	PARA: FFC1600/110, FFC1600/125, FFC1600/90
29	* 00691R0101	PARA: FFC1800/110, FFC1800/125, FFC1800/140, FFC1800/90
29	* 00692R0101	PARA: FFC2000/110, FFC2000/125, FFC2000/140, FFC2000/160

CODE **FFC1050/63, FFC1050/75, FFC1050/90, FFC1200/75, FFC1200/90, FFC1400/110, FFC1400/75, FFC1400/90, FFC1600/110, FFC1600/125, FFC1600/90, FFC1800/110, FFC1800/125, FFC1800/140, FFC1800/90, FFC2000/110, FFC2000/125, FFC2000/140, FFC2000/160**

DESCRIPTION: **FILTRE FLORIDA D. 1050-1200-1400-1600-1800-2000**



FRANCAIS

POS	CODE	DESCRIPTION	QUANTITE	POS	CODE	DESCRIPTION	QUANTITE
1	CE04180404	MANOMETRE COMPLET		8	* CE04160833	ENSEMBLE ENTREE 110 1800-2000	
2	CE04180405	MANOMETRE 1/8" 3 KG./C "		8	* CE04160834	ENSEMBLE ENTREE 125 1800-2000	
3	CE04290101	BOUCHON PURGE 1/4" ANONYM "		8	* CE04160816	ENSEMBLE ENTREE 140 1800-2000	
4	CE04260207	COUVERCLE DE FILTRE COMPLETE		8	* CE04160817	ENSEMBLE ENTREE 160 2000	
5	CE04160103	VISSERIE COUVERCLE DE FILTRE		9	* CE04160835	ENSEMBLE SORTIE EUROPE D.63 POUR 1050	
6	CE04260208	COUVERCLE FILTRE + JOINT		9	* CE04160836	ENSEMBLE SORTIE EUROPE D.75 POUR 1050	
7	CE04160101	JOINT TORIQUE COUVERCLE		9	* CE04160837	ENSEMBLE SORTIE EUROPE D.90 POUR 1050	
8	* CE04160811	ENSEMBLE ENTREE 63 1050		9	* CE04160838	ENSEMBLE SORTIE EUROPE D.75 POUR 1200	
8	* CE04160812	ENSEMBLE ENTREE 75 1050		9	* CE04160839	ENSEMBLE SORTIE EUROPE D.90 POUR 1200	
8	* CE04160813	ENSEMBLE ENTREE 90 1050		9	* CE04160840	ENSEMBLE SORTIE EUROPE D.110 PARA 1200	

CODE **FFC1050/63, FFC1050/75, FFC1050/90, FFC1200/75, FFC1200/90,**
FFC1400/110, FFC1400/75, FFC1400/90, FFC1600/110, FFC1600/125,
FFC1600/90, FFC1800/110, FFC1800/125, FFC1800/140, FFC1800/90,
FFC2000/110, FFC2000/125, FFC2000/140, FFC2000/160

DESCRIPTION: FILTRE FLORIDA D. 1050-1200-1400-1600-1800-2000

8	* CE04160830	ENSEMBLE ENTREE 75 1200-1400	9	* CE04160841	ENSEMBLE SORTIE EUROPE D.125 POUR 1
8	* CE04160831	ENSEMBLE ENTREE 90 1200-1400-1600	9	* CE04160842	ENSEMBLE SORTIE EUROPE D.90 POUR 1
8	* CE04160814	ENSEMBLE ENTREE 110 1400-1600	9	* CE04160843	ENSEMBLE SORTIE EUROPE D.110 POUR 1
8	* CE04160815	ENSEMBLE ENTREE 125 1600	9	* CE04160844	ENSEMBLE SORTIE EUROPE D.125 POUR 1
8	* CE04160832	ENSEMBLE ENTREE 90 1800	9	* CE04160845	ENSEMBLE SORTIE EUROPE D.140 POUR 1
9	* CE04160846	ENSEMBLE SORTIE EUROPE D.160 POUR	26	* 105063R0420	ENSEMBLE COLLECTEUR D.63 POUR 1050
10	CE04260210	FIXATION MANOMETRE	26	* 105075R0420	ENSEMBLE COLLECTEUR D.75 / 1050
11	CE04160809	BRIDE GORGE 20 VIS	26	* 105090R0420	ENSEMBLE COLLECTEUR D.90 / 1050
12	CE04020116	JOINT TORIQUE 255X4	26	* 120075R0420	ENSEMBLE COLLECTEUR D.75 / 1200
13	CE04160810	BOUCHON PURGE SABLE	26	* 120090R0420	ENSEMBLE COLLECTEUR D.90 / 1200
14	CE04160847	COUVERCLE FILTRE D. 220 NOIR	26	* 140075R0420	ENSEMBLE COLLECTEUR D.75 / 1400
15	CE04260106	JOINT BRIDE FIXATION VANNE TOP	26	* 140090R0420	ENSEMBLE COLLECTEUR D.90 / 1400
16	CE04160849	BRIDE DE FIXATION COUVERCLE	26	* 1400110R0420	ENSEMBLE COLLECTEUR D.110 / 1400
17	CE04160850	VISSERIE FIXATION COUVERCLE M8	26	* 160090R0420	ENSEMBLE COLLECTEUR D.90 / 1600
18	CE04040113	BOUCHON PURGE ET JOINT	26	* 1600110R0420	ENSEMBLE COLLECTEUR D.110 / 1600
19	CE04160808	PURGE D'EAU 3/4"	26	* 1600125R0420	ENSEMBLE COLLECTEUR D.125 / 1600
20	CE04160807	VANNE A BOISSEAU SPHERIQUE 3/4"	26	* 180090R0420	ENSEMBLE COLLECTEUR D.90 / 1800
21	* CE04300916	BRAS DE REPARTITEUR 1" 225 M "	26	* 1800110R0420	ENSEMBLE COLLECTEUR D.110 / 1800
21	* CE04300915	BRAS DE REPARTITEUR 1" 175 M "	26	* 1800125R0420	ENSEMBLE COLLECTEUR D.125 / 1800
21	* CE04290109	BRAS DE REPARTITEUR 1" 265 M/M "	26	* 1800140R0420	ENSEMBLE COLLECTEUR D.140 / 1800
22	* CE04260418	MANCHON UNION 1"	26	* 2000110R0420	ENSEMBLE COLLECTEUR D.110 / 2000
23	* CE04260419	BRAS DE REPARTITEUR 1" 100M "	26	* 2000125R0420	ENSEMBLE COLLECTEUR D.125 / 2000
24	* CE04260401	ENSEMBLE BRAS DE REPARTITEUR D. 95	26	* 2000140R0420	ENSEMBLE COLLECTEUR D.140 / 2000
24	* CE04260402	ENSEMBLE BRAS DE REPARTITEUR D. 12	26	* 2000160R0420	ENSEMBLE COLLECTEUR D.160 / 2000
24	* CE04260403	ENSEMBLE BRAS DE REPARTITEUR D. 14	27	* 180090R0422	SUPPORT COLLECTEUR D.90 - 1800
24	* CE04260404	ENSEMBLE BRAS DE REPARTITEUR D. 16	27	* 1800110R0422	SUPPORT COLLECTEUR D.110 - 1800
24	* CE04260405	ENSEMBLE BRAS DE REPARTITEUR D. 18	27	* 1800125R0422	SUPPORT COLLECTEUR D.125 - 1800
24	* CE04260406	ENSEMBLE BRAS DE REPARTITEUR D. 20	27	* 1800140R0422	SUPPORT COLLECTEUR D.140 - 1800
25	* 105063R0430	ENSEMBLE DIFFUSEUR D.63 / 1050	27	* 2000110R0422	SUPPORT COLLECTEUR D.110 - 2000
25	* 105075R0430	ENSEMBLE DIFFUSEUR D.75 / 1050	27	* 2000125R0422	SUPPORT COLLECTEUR D.125 - 2000
25	* 105090R0430	ENSEMBLE DIFFUSEUR D.90 / 1050	27	* 2000140R0422	SUPPORT COLLECTEUR D.140 - 2000
25	* 120075R0430	ENSEMBLE DIFFUSEUR D.75 / 1200	27	* 2000160R0422	SUPPORT COLLECTEUR D.160 - 2000
25	* 120090R0430	ENSEMBLE DIFFUSEUR D.90 / 1200	28	* 180090R0423	PROTECTION DIFFUSEUR D.90 - 1800
25	* 140075R0430	ENSEMBLE DIFFUSEUR D.75 / 1400	28	* 1800110R0423	PROTECTION DIFFUSEUR D.110 - 1800
25	* 140090R0430	ENSEMBLE DIFFUSEUR D.90 / 1400	28	* 1800125R0423	PROTECTION DIFFUSEUR D.125 - 1800
25	* 1400110R0430	ENSEMBLE DIFFUSEUR D.110 / 1400	28	* 1800140R0423	PROTECTION DIFFUSEUR D.140 - 1800
25	* 160090R0430	ENSEMBLE DIFFUSEUR D.90 / 1600	28	* 2000110R0423	PROTECTION DIFFUSEUR D.110 - 2000
25	* 1600110R0430	ENSEMBLE DIFFUSEUR D.110 / 1600	28	* 2000125R0423	PROTECTION DIFFUSEUR D.125 - 2000
25	* 1600125R0430	ENSEMBLE DIFFUSEUR D.125 / 1600	28	* 2000140R0423	PROTECTION DIFFUSEUR D.140 - 2000
25	* 180090R0430	ENSEMBLE DIFFUSEUR D.90 / 1800	28	* 2000160R0423	PROTECTION DIFFUSEUR D.160 - 2000
25	* 1800110R0430	ENSEMBLE DIFFUSEUR D.110 / 1800	29	* 00687R0101	SOCLE D.1050
25	* 1800125R0430	ENSEMBLE DIFFUSEUR D.125 / 1800	29	* 00546R0101	SOCLE D.1200
25	* 1800140R0430	ENSEMBLE DIFFUSEUR D.140 / 1800	29	* 00689R0101	SOCLE D.1400
25	* 2000110R0430	ENSEMBLE DIFFUSEUR D.110 / 2000	29	* 00690R0101	SOCLE D.1600
25	* 2000125R0430	ENSEMBLE DIFFUSEUR D.125 / 2000	29	* 00691R0101	SOCLE D.1800
25	* 2000140R0430	ENSEMBLE DIFFUSEUR D.140 / 2000	29	* 00692R0101	SOCLE D.2000
25	* 2000160R0430	ENSEMBLE DIFFUSEUR D.160 / 2000			

CODE **FFC1050/63, FFC1050/75, FFC1050/90, FFC1200/75, FFC1200/90,**
FFC1400/110, FFC1400/75, FFC1400/90, FFC1600/110, FFC1600/125,
FFC1600/90, FFC1800/110, FFC1800/125, FFC1800/140, FFC1800/90,
FFC2000/110, FFC2000/125, FFC2000/140, FFC2000/160

DESCRIPTION: FILTRE FLORIDA D. 1050-1200-1400-1600-1800-2000

OBSERVATIONS

POS	CODE	OBSERVATIONS
8	* CE04160811	POUR: FFC1050/63
8	* CE04160812	POUR: FFC1050/75
8	* CE04160813	POUR: FFC1050/90
8	* CE04160830	POUR: FFC1200/75, FFC1400/75
8	* CE04160831	POUR: FFC1200/90, FFC1400/90, FFC1600/90
8	* CE04160814	POUR: FFC1400/110, FFC1600/110
8	* CE04160815	POUR: FFC1600/125
8	* CE04160832	POUR: FFC1800/90
8	* CE04160833	POUR: FFC1800/110, FFC2000/110
8	* CE04160834	POUR: FFC1800/125, FFC2000/125
8	* CE04160816	POUR: FFC1800/140, FFC2000/140
8	* CE04160817	POUR: FFC2000/160
9	* CE04160835	POUR: FFC1050/63
9	* CE04160836	POUR: FFC1050/75
9	* CE04160837	POUR: FFC1050/90
9	* CE04160838	POUR: FFC1200/75, FFC1400/75
9	* CE04160839	POUR: FFC1200/90, FFC1400/90, FFC1600/90
9	* CE04160840	POUR: FFC1400/110, FFC1600/110
9	* CE04160841	POUR: FFC1600/125
9	* CE04160842	POUR: FFC1800/90
9	* CE04160843	POUR: FFC1800/110, FFC2000/110
9	* CE04160844	POUR: FFC1800/125, FFC2000/125
9	* CE04160845	POUR: FFC1800/140, FFC2000/140
9	* CE04160846	POUR: FFC2000/160
21	* CE04300916	POUR: FFC1050/63 [6UT], FFC1050/75 [6UT], FFC1050/90 [6UT], FFC1400/110 [6UT], FFC1400/75 [6UT], FFC1400/90 [6UT], FFC1800/110 [6UT], FFC1800/125 [6UT], FFC1800/140 [6UT], FFC1800/90 [6UT], FFC2000/110 [9UT], FFC2000/125 [9UT], FFC2000/140 [9UT], FFC2000/160 [9UT]
21	* CE04300915	POUR: FFC1800/110 [7UT], FFC1800/125 [7UT], FFC1800/140 [7UT], FFC1800/90 [7UT]
21	* CE04290109	POUR: FFC1200/75 [6UT], FFC1200/90 [6UT], FFC1600/110 [6UT], FFC1600/125 [6UT], FFC1600/90 [6UT], FFC2000/110 [4UT], FFC2000/125 [4UT], FFC2000/140 [4UT], FFC2000/160 [4UT]
22	* CE04260418	POUR: FFC1050/63 [3UT], FFC1050/75 [3UT], FFC1050/90 [3UT], FFC1200/75 [3UT], FFC1200/90 [3UT], FFC1400/110 [6UT], FFC1400/75 [6UT], FFC1400/90 [6UT], FFC1600/110 [6UT], FFC1600/125 [6UT], FFC1600/90 [6UT], FFC1800/110 [14UT], FFC1800/125 [14UT], FFC1800/140 [14UT], FFC1800/90 [14UT], FFC2000/110 [20UT], FFC2000/125 [20UT], FFC2000/140 [20UT], FFC2000/160 [20UT]
23	* CE04260419	POUR: FFC1050/63 [3UT], FFC1050/75 [3UT], FFC1050/90 [3UT], FFC1200/75 [3UT], FFC1200/90 [3UT], FFC1400/110 [6UT], FFC1400/75 [6UT], FFC1400/90 [6UT], FFC1600/110 [6UT], FFC1600/125 [6UT], FFC1600/90 [6UT], FFC1800/110 [14UT], FFC1800/125 [14UT], FFC1800/140 [14UT], FFC1800/90 [14UT], FFC2000/110 [20UT], FFC2000/125 [20UT], FFC2000/140 [20UT], FFC2000/160 [20UT]
24	* CE04260401	POUR: FFC1050/63, FFC1050/75, FFC1050/90
24	* CE04260402	POUR: FFC1200/75, FFC1200/90
24	* CE04260403	POUR: FFC1400/110, FFC1400/75, FFC1400/90
24	* CE04260404	POUR: FFC1600/110, FFC1600/125, FFC1600/90
24	* CE04260405	POUR: FFC1800/110, FFC1800/125, FFC1800/140, FFC1800/90
24	* CE04260406	POUR: FFC2000/110, FFC2000/125, FFC2000/140, FFC2000/160
25	* 105063R0430	POUR: FFC1050/63

CODE **FFC1050/63, FFC1050/75, FFC1050/90, FFC1200/75, FFC1200/90,**
FFC1400/110, FFC1400/75, FFC1400/90, FFC1600/110, FFC1600/125,
FFC1600/90, FFC1800/110, FFC1800/125, FFC1800/140, FFC1800/90,
FFC2000/110, FFC2000/125, FFC2000/140, FFC2000/160

DESCRIPTION: FILTRE FLORIDA D. 1050-1200-1400-1600-1800-2000

25	* 105075R0430	POUR: FFC1050/75
25	* 105090R0430	POUR: FFC1050/90
25	* 120075R0430	POUR: FFC1200/75
25	* 120090R0430	POUR: FFC1200/90
25	* 140075R0430	POUR: FFC1400/75
25	* 140090R0430	POUR: FFC1400/90
25	* 1400110R0430	POUR: FFC1400/110
25	* 160090R0430	POUR: FFC1600/90
25	* 1600110R0430	POUR: FFC1600/110
25	* 1600125R0430	POUR: FFC1600/125
25	* 180090R0430	POUR: FFC1800/90
25	* 1800110R0430	POUR: FFC1800/110
25	* 1800125R0430	POUR: FFC1800/125
25	* 1800140R0430	POUR: FFC1800/140
25	* 2000110R0430	POUR: FFC2000/110
25	* 2000125R0430	POUR: FFC2000/125
25	* 2000140R0430	POUR: FFC2000/140
25	* 2000160R0430	POUR: FFC2000/160
26	* 105063R0420	POUR: FFC1050/63
26	* 105075R0420	POUR: FFC1050/75
26	* 105090R0420	POUR: FFC1050/90
26	* 120075R0420	POUR: FFC1200/75
26	* 120090R0420	POUR: FFC1200/90
26	* 140075R0420	POUR: FFC1400/75
26	* 140090R0420	POUR: FFC1400/90
26	* 1400110R0420	POUR: FFC1400/110
26	* 160090R0420	POUR: FFC1600/90
26	* 1600110R0420	POUR: FFC1600/110
26	* 1600125R0420	POUR: FFC1600/125
26	* 180090R0420	POUR: FFC1800/90
26	* 1800110R0420	POUR: FFC1800/110
26	* 1800125R0420	POUR: FFC1800/125
26	* 1800140R0420	POUR: FFC1800/140
26	* 2000110R0420	POUR: FFC2000/110
26	* 2000125R0420	POUR: FFC2000/125
26	* 2000140R0420	POUR: FFC2000/140
26	* 2000160R0420	POUR: FFC2000/160
27	* 180090R0422	POUR: FFC1800/90
27	* 1800110R0422	POUR: FFC1800/110
27	* 1800125R0422	POUR: FFC1800/125
27	* 1800140R0422	POUR: FFC1800/140
27	* 2000110R0422	POUR: FFC2000/110
27	* 2000125R0422	POUR: FFC2000/125
27	* 2000140R0422	POUR: FFC2000/140

CODE **FFC1050/63, FFC1050/75, FFC1050/90, FFC1200/75, FFC1200/90,
FFC1400/110, FFC1400/75, FFC1400/90, FFC1600/110, FFC1600/125,
FFC1600/90, FFC1800/110, FFC1800/125, FFC1800/140, FFC1800/90,
FFC2000/110, FFC2000/125, FFC2000/140, FFC2000/160**

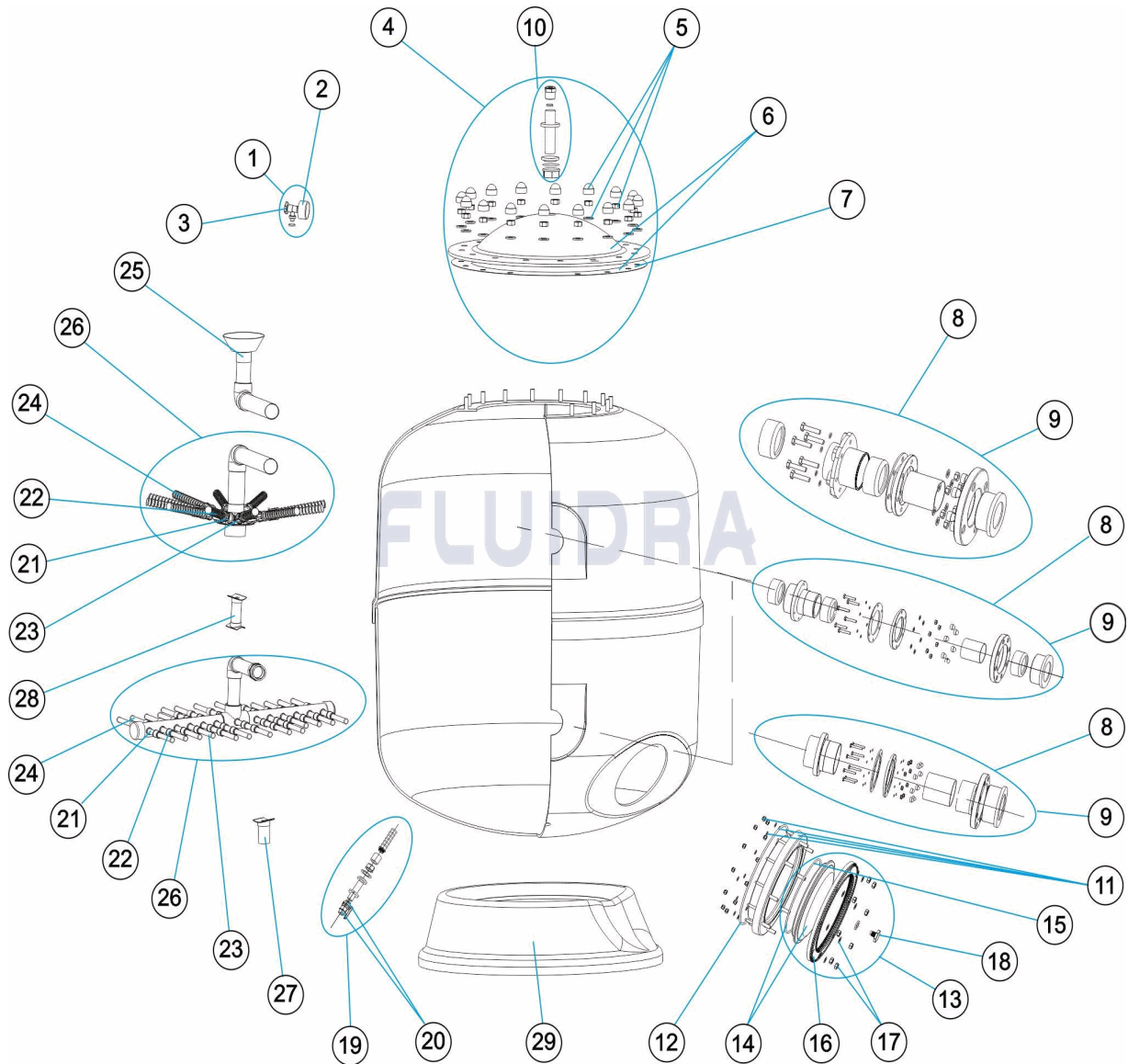
DESCRIPTION: **FILTRE FLORIDA D. 1050-1200-1400-1600-1800-2000**

27	* 2000160R0422	POUR: FFC2000/160
28	* 180090R0423	POUR: FFC1800/90
28	* 1800110R0423	POUR: FFC1800/110
28	* 1800125R0423	POUR: FFC1800/125
28	* 1800140R0423	POUR: FFC1800/140
28	* 2000110R0423	POUR: FFC2000/110
28	* 2000125R0423	POUR: FFC2000/125
28	* 2000140R0423	POUR: FFC2000/140
28	* 2000160R0423	POUR: FFC2000/160
29	* 00687R0101	POUR: FFC1050/63, FFC1050/75, FFC1050/90
29	* 00546R0101	POUR: FFC1200/75, FFC1200/90
29	* 00689R0101	POUR: FFC1400/110, FFC1400/75, FFC1400/90
29	* 00690R0101	POUR: FFC1600/110, FFC1600/125, FFC1600/90
29	* 00691R0101	POUR: FFC1800/110, FFC1800/125, FFC1800/140, FFC1800/90
29	* 00692R0101	POUR: FFC2000/110, FFC2000/125, FFC2000/140, FFC2000/160

CODE

**FFC1050/63, FFC1050/75, FFC1050/90, FFC1200/75, FFC1200/90,
 FFC1400/110, FFC1400/75, FFC1400/90, FFC1600/110, FFC1600/125,
 FFC1600/90, FFC1800/110, FFC1800/125, FFC1800/140, FFC1800/90,
 FFC2000/110, FFC2000/125, FFC2000/140, FFC2000/160**

DESCRIPTION: FLORIDA DRAIN D. 1050-1200-1400-1600-1800-2000


ENGLISH

POS	CODE	DESCRIPTION	QUANTITY	POS	CODE	DESCRIPTION	QUANTITY
1	CE04180404	COMPLETE PRESSURE GAUGE UNIT		8	* CE04160833	INLET ASSEMBLY 110 1800-2000	
2	CE04180405	PRESSURE GAUGE 1/8" 3 KG./C "		8	* CE04160834	INLET ASSEMBLY 125 1800-2000	
3	CE04290101	ANONYMOUS CAP		8	* CE04160816	INLET ASSEMBLY 140 1800-2000	
4	CE04260207	FILTER LID UNIT		8	* CE04160817	INLET ASSEMBLY 160 2000	
5	CE04160103	FILTER LID BOLTS		9	* CE04160835	OUTLET ASSEMBLY EUROPE D.63 FOR 105	
6	CE04260208	FILTER LID + GASKET		9	* CE04160836	OUTLET ASSEMBLY EUROPE D.75 FOR 105	
7	CE04160101	LID 'O' RING		9	* CE04160837	OUTLET ASSEMBLY EUROPE D.90 FOR 105	
8	* CE04160811	INLET ASSEMBLY 63 1050		9	* CE04160838	OUTLET ASSEMBLY EUROPE D.75 FOR 120	
8	* CE04160812	INLETASSEMBLY 75 1050		9	* CE04160839	OUTLET ASSEMBLY EUROPE D.90 FOR 120	
8	* CE04160813	INLET ASSEMBLY 90 1050		9	* CE04160840	OUTLET ASSEMBLY EUROPE D.110 FOR 14	

* SEE OBSERVATIONS SHEET

CODE **FFC1050/63, FFC1050/75, FFC1050/90, FFC1200/75, FFC1200/90, FFC1400/110, FFC1400/75, FFC1400/90, FFC1600/110, FFC1600/125, FFC1600/90, FFC1800/110, FFC1800/125, FFC1800/140, FFC1800/90, FFC2000/110, FFC2000/125, FFC2000/140, FFC2000/160**

DESCRIPTION: FLORIDA DRAIN D. 1050-1200-1400-1600-1800-2000

8	* CE04160830	INLET ASSEMBLY 75 1200-1400	9	* CE04160841	OUTLET ASSEMBLY EUROPE D.125 FOR 16
8	* CE04160831	INLET ASSEMBLY 90 1200-1400-1600	9	* CE04160842	OUTLET ASSEMBLY EUROPE D.90 FOR 180
8	* CE04160814	INLET ASSEMBLY 110 1400-1600	9	* CE04160843	OUTLET ASSEMBLY EUROPE D.110 FOR 18
8	* CE04160815	INLET ASSEMBLY 125 1600	9	* CE04160844	OUTLET ASSEMBLY EUROPE D.125 FOR 18
8	* CE04160832	INLET ASSEMBLY 90 1800	9	* CE04160845	OUTLET ASSEMBLY EUROPE D.140 FOR 18
9	* CE04160846	OUTLET ASSEMBLY EUROPE D.160 FOR 21	26	* 105063R0420	COLLECTOR ASSEMBLY D. 63 - 1050
10	CE04260210	PRESSURE GAUGE ANCHOR	26	* 105075R0420	COLLECTOR ASSEMBLY D. 75 / 1050
11	CE04160809	20-SCREW NECK RING	26	* 105090R0420	COLLECTOR ASSEMBLY D. 90 / 1050
12	CE04020116	O' RING 255X4	26	* 120075R0420	COLLECTOR ASSEMBLY D. 75 / 1200
13	CE04160810	SAND DRAINAGE COVER	26	* 120090R0420	COLLECTOR ASSEMBLY D. 90 / 1200
14	CE04160847	FILTER LID D. 220 BLACK	26	* 140075R0420	COLLECTOR ASSEMBLY D. 75 / 1400
15	CE04260106	VALVE TOP RING FIXING GASKET	26	* 140090R0420	COLLECTOR ASSEMBLY D. 90 / 1400
16	CE04160849	LID FIXING RING	26	* 1400110R0420	COLLECTOR ASSEMBLY D. 110 / 1400
17	CE04160850	LID ANCHOR BOLTS M8	26	* 160090R0420	COLLECTOR ASSEMBLY D. 90 / 1600
18	CE04040113	DRAIN PLUG AND GASKET	26	* 1600110R0420	COLLECTOR ASSEMBLY D. 110 / 1600
19	CE04160808	WATER PURGE 3/4"	26	* 1600125R0420	COLLECTOR ASSEMBLY D. 125 / 1600
20	CE04160807	BALL VALVE 3/4"	26	* 180090R0420	COLLECTOR ASSEMBLY D. 90 / 1800
21	* CE04300916	MANIFOLD ARM 1" 225 M "	26	* 1800110R0420	COLLECTOR ASSEMBLY D. 110 / 1800
21	* CE04300915	MANIFOLD ARM 1" 175 M "	26	* 1800125R0420	COLLECTOR ASSEMBLY D. 125 / 1800
21	* CE04290109	COLLECTOR ARM 1" 265 M "	26	* 1800140R0420	COLLECTOR ASSEMBLY D. 140 / 1800
22	* CE04260418	UNION 1"	26	* 2000110R0420	COLLECTOR ASSEMBLY D. 110 / 2000
23	* CE04260419	MANIFOLD ARM 1" 100 M "	26	* 2000125R0420	COLLECTOR ASSEMBLY D. 125 / 2000
24	* CE04260401	MANIFOLD ARM ASSEMBLY D. 950-1050	26	* 2000140R0420	COLLECTOR ASSEMBLY D. 140 / 2000
24	* CE04260402	MANIFOLD ARM ASSEMBLY D. 1200	26	* 2000160R0420	COLLECTOR ASSEMBLY D. 160 / 2000
24	* CE04260403	MANIFOLD ARM ASSEMBLY D. 1400	27	* 180090R0422	COLLECTOR SUPPORT D.90 - 1800
24	* CE04260404	MANIFOLD ARM ASSEMBLY D. 1600	27	* 1800110R0422	COLLECTOR SUPPORT D.110 - 1800
24	* CE04260405	MANIFOLD ARM ASSEMBLY D. 1800	27	* 1800125R0422	COLLECTOR SUPPORT D.125 - 1800
24	* CE04260406	MANIFOLD ARM ASSEMBLY D. 2000	27	* 1800140R0422	COLLECTOR SUPPORT D.140 - 1800
25	* 105063R0430	DIFFUSER ASSEMBLY D.63 / 1050	27	* 2000110R0422	COLLECTOR SUPPORT D.110 - 2000
25	* 105075R0430	DIFFUSER ASSEMBLY D.75 / 1050	27	* 2000125R0422	COLLECTOR SUPPORT D.125 - 2000
25	* 105090R0430	DIFFUSER ASSEMBLY D.90 / 1050	27	* 2000140R0422	COLLECTOR SUPPORT D.140 - 2000
25	* 120075R0430	DIFFUSER ASSEMBLY D.75 / 1200	27	* 2000160R0422	COLLECTOR SUPPORT D.160 - 2000
25	* 120090R0430	DIFFUSER ASSEMBLY D.90 / 1200	28	* 180090R0423	DIFFUSER SUPPORT D.90 - 1800
25	* 140075R0430	DIFFUSER ASSEMBLY D.75 / 1400	28	* 1800110R0423	DIFFUSER SUPPORT D.110 - 1800
25	* 140090R0430	DIFFUSER ASSEMBLY D.90 / 1400	28	* 1800125R0423	DIFFUSER SUPPORT D.125 - 1800
25	* 1400110R0430	DIFFUSER ASSEMBLY D.110 / 1400	28	* 1800140R0423	DIFFUSER SUPPORT D.140 - 1800
25	* 160090R0430	DIFFUSER ASSEMBLY D.90 / 1600	28	* 2000110R0423	DIFFUSER SUPPORT D.110 - 2000
25	* 1600110R0430	DIFFUSER ASSEMBLY D.110 / 1600	28	* 2000125R0423	DIFFUSER SUPPORT D.125 - 2000
25	* 1600125R0430	DIFFUSER ASSEMBLY D.125 / 1600	28	* 2000140R0423	DIFFUSER SUPPORT D.140 - 2000
25	* 180090R0430	DIFFUSER ASSEMBLY D.90 / 1800	28	* 2000160R0423	DIFFUSER SUPPORT D.160 - 2000
25	* 1800110R0430	DIFFUSER ASSEMBLY D.110 / 1800	29	* 00687R0101	FILTER BASE D. 1050
25	* 1800125R0430	DIFFUSER ASSEMBLY D.125 / 1800	29	* 00546R0101	FILTER BASE D. 1200
25	* 1800140R0430	DIFFUSER ASSEMBLY D.140 / 1800	29	* 00689R0101	FILTER BASE D. 1400
25	* 2000110R0430	DIFFUSER ASSEMBLY D.110 / 2000	29	* 00690R0101	FILTER BASE D. 1600
25	* 2000125R0430	DIFFUSER ASSEMBLY D.125 / 2000	29	* 00691R0101	FILTER BASE D. 1800
25	* 2000140R0430	DIFFUSER ASSEMBLY D.140 / 2000	29	* 00692R0101	FILTER BASE 2000
25	* 2000160R0430	DIFFUSER ASSEMBLY D.160 / 2000			

CODE **FFC1050/63, FFC1050/75, FFC1050/90, FFC1200/75, FFC1200/90,
FFC1400/110, FFC1400/75, FFC1400/90, FFC1600/110, FFC1600/125,
FFC1600/90, FFC1800/110, FFC1800/125, FFC1800/140, FFC1800/90,
FFC2000/110, FFC2000/125, FFC2000/140, FFC2000/160**

DESCRIPTION: **FLORIDA DRAIN D. 1050-1200-1400-1600-1800-2000**

OBSERVATIONS

POS	CODE	OBSERVATIONS
8	* CE04160811	FOR: FFC1050/63
8	* CE04160812	FOR: FFC1050/75
8	* CE04160813	FOR: FFC1050/90
8	* CE04160830	FOR: FFC1200/75, FFC1400/75
8	* CE04160831	FOR: FFC1200/90, FFC1400/90, FFC1600/90
8	* CE04160814	FOR: FFC1400/110, FFC1600/110
8	* CE04160815	FOR: FFC1600/125
8	* CE04160832	FOR: FFC1800/90
8	* CE04160833	FOR: FFC1800/110, FFC2000/110
8	* CE04160834	FOR: FFC1800/125, FFC2000/125
8	* CE04160816	FOR: FFC1800/140, FFC2000/140
8	* CE04160817	FOR: FFC2000/160
9	* CE04160835	FOR: FFC1050/63
9	* CE04160836	FOR: FFC1050/75
9	* CE04160837	FOR: FFC1050/90
9	* CE04160838	FOR: FFC1200/75, FFC1400/75
9	* CE04160839	FOR: FFC1200/90, FFC1400/90, FFC1600/90
9	* CE04160840	FOR: FFC1400/110, FFC1600/110
9	* CE04160841	FOR: FFC1600/125
9	* CE04160842	FOR: FFC1800/90
9	* CE04160843	FOR: FFC1800/110, FFC2000/110
9	* CE04160844	FOR: FFC1800/125, FFC2000/125
9	* CE04160845	FOR: FFC1800/140, FFC2000/140
9	* CE04160846	FOR: FFC2000/160
21	* CE04300916	FOR: FFC1050/63 [6UT], FFC1050/75 [6UT], FFC1050/90 [6UT], FFC1400/110 [6UT], FFC1400/75 [6UT], FFC1400/90 [6UT], FFC1800/110 [6UT], FFC1800/125 [6UT], FFC1800/140 [6UT], FFC1800/90 [6UT], FFC2000/110 [9UT], FFC2000/125 [9UT], FFC2000/140 [9UT], FFC2000/160 [9UT]
21	* CE04300915	FOR: FFC1800/110 [7UT], FFC1800/125 [7UT], FFC1800/140 [7UT], FFC1800/90 [7UT]
21	* CE04290109	FOR: FFC1200/75 [6UT], FFC1200/90 [6UT], FFC1600/110 [6UT], FFC1600/125 [6UT], FFC1600/90 [6UT], FFC2000/110 [4UT], FFC2000/125 [4UT], FFC2000/140 [4UT], FFC2000/160 [4UT]
22	* CE04260418	FOR: FFC1050/63 [3UT], FFC1050/75 [3UT], FFC1050/90 [3UT], FFC1200/75 [3UT], FFC1200/90 [3UT], FFC1400/110 [6UT], FFC1400/75 [6UT], FFC1400/90 [6UT], FFC1600/110 [6UT], FFC1600/125 [6UT], FFC1600/90 [6UT], FFC1800/110 [14UT], FFC1800/125 [14UT], FFC1800/140 [14UT], FFC1800/90 [14UT], FFC2000/110 [20UT], FFC2000/125 [20UT], FFC2000/140 [20UT], FFC2000/160 [20UT]
23	* CE04260419	FOR: FFC1050/63 [3UT], FFC1050/75 [3UT], FFC1050/90 [3UT], FFC1200/75 [3UT], FFC1200/90 [3UT], FFC1400/110 [6UT], FFC1400/75 [6UT], FFC1400/90 [6UT], FFC1600/110 [6UT], FFC1600/125 [6UT], FFC1600/90 [6UT], FFC1800/110 [14UT], FFC1800/125 [14UT], FFC1800/140 [14UT], FFC1800/90 [14UT], FFC2000/110 [20UT], FFC2000/125 [20UT], FFC2000/140 [20UT], FFC2000/160 [20UT]
24	* CE04260401	FOR: FFC1050/63, FFC1050/75, FFC1050/90
24	* CE04260402	FOR: FFC1200/75, FFC1200/90
24	* CE04260403	FOR: FFC1400/110, FFC1400/75, FFC1400/90
24	* CE04260404	FOR: FFC1600/110, FFC1600/125, FFC1600/90
24	* CE04260405	FOR: FFC1800/110, FFC1800/125, FFC1800/140, FFC1800/90
24	* CE04260406	FOR: FFC2000/110, FFC2000/125, FFC2000/140, FFC2000/160
25	* 105063R0430	FOR: FFC1050/63

CODE **FFC1050/63, FFC1050/75, FFC1050/90, FFC1200/75, FFC1200/90,
FFC1400/110, FFC1400/75, FFC1400/90, FFC1600/110, FFC1600/125,
FFC1600/90, FFC1800/110, FFC1800/125, FFC1800/140, FFC1800/90,
FFC2000/110, FFC2000/125, FFC2000/140, FFC2000/160**

DESCRIPTION: **FLORIDA DRAIN D. 1050-1200-1400-1600-1800-2000**

25	* 105075R0430	FOR: FFC1050/75
25	* 105090R0430	FOR: FFC1050/90
25	* 120075R0430	FOR: FFC1200/75
25	* 120090R0430	FOR: FFC1200/90
25	* 140075R0430	FOR: FFC1400/75
25	* 140090R0430	FOR: FFC1400/90
25	* 1400110R0430	FOR: FFC1400/110
25	* 160090R0430	FOR: FFC1600/90
25	* 1600110R0430	FOR: FFC1600/110
25	* 1600125R0430	FOR: FFC1600/125
25	* 180090R0430	FOR: FFC1800/90
25	* 1800110R0430	FOR: FFC1800/110
25	* 1800125R0430	FOR: FFC1800/125
25	* 1800140R0430	FOR: FFC1800/140
25	* 2000110R0430	FOR: FFC2000/110
25	* 2000125R0430	FOR: FFC2000/125
25	* 2000140R0430	FOR: FFC2000/140
25	* 2000160R0430	FOR: FFC2000/160
26	* 105063R0420	FOR: FFC1050/63
26	* 105075R0420	FOR: FFC1050/75
26	* 105090R0420	FOR: FFC1050/90
26	* 120075R0420	FOR: FFC1200/75
26	* 120090R0420	FOR: FFC1200/90
26	* 140075R0420	FOR: FFC1400/75
26	* 140090R0420	FOR: FFC1400/90
26	* 1400110R0420	FOR: FFC1400/110
26	* 160090R0420	FOR: FFC1600/90
26	* 1600110R0420	FOR: FFC1600/110
26	* 1600125R0420	FOR: FFC1600/125
26	* 180090R0420	FOR: FFC1800/90
26	* 1800110R0420	FOR: FFC1800/110
26	* 1800125R0420	FOR: FFC1800/125
26	* 1800140R0420	FOR: FFC1800/140
26	* 2000110R0420	FOR: FFC2000/110
26	* 2000125R0420	FOR: FFC2000/125
26	* 2000140R0420	FOR: FFC2000/140
26	* 2000160R0420	FOR: FFC2000/160
27	* 180090R0422	FOR: FFC1800/90
27	* 1800110R0422	FOR: FFC1800/110
27	* 1800125R0422	FOR: FFC1800/125
27	* 1800140R0422	FOR: FFC1800/140
27	* 2000110R0422	FOR: FFC2000/110
27	* 2000125R0422	FOR: FFC2000/125
27	* 2000140R0422	FOR: FFC2000/140

CODE **FFC1050/63, FFC1050/75, FFC1050/90, FFC1200/75, FFC1200/90,
FFC1400/110, FFC1400/75, FFC1400/90, FFC1600/110, FFC1600/125,
FFC1600/90, FFC1800/110, FFC1800/125, FFC1800/140, FFC1800/90,
FFC2000/110, FFC2000/125, FFC2000/140, FFC2000/160**

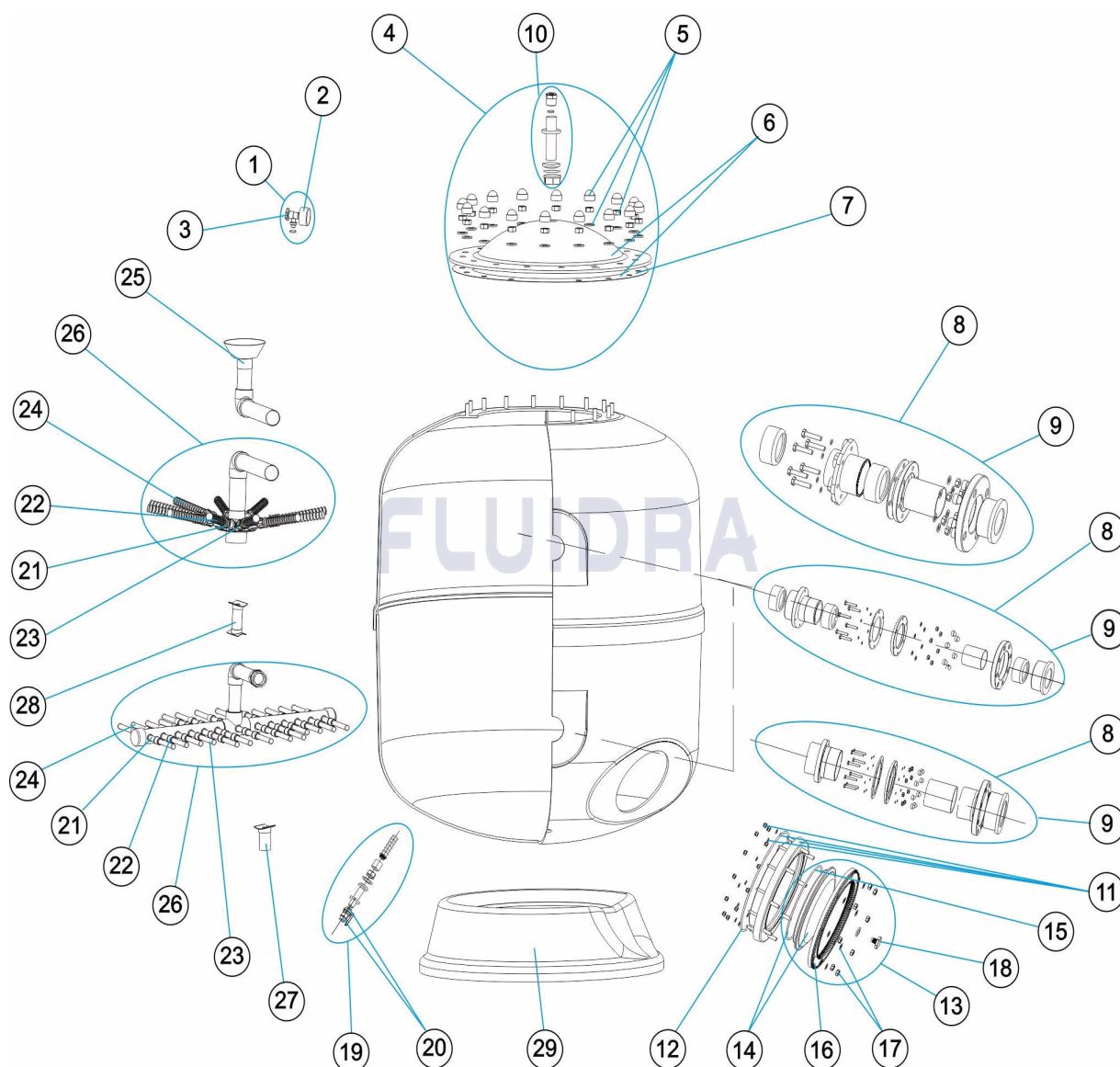
DESCRIPTION: **FLORIDA DRAIN D. 1050-1200-1400-1600-1800-2000**

27	* 2000160R0422	FOR: FFC2000/160
28	* 180090R0423	FOR: FFC1800/90
28	* 1800110R0423	FOR: FFC1800/110
28	* 1800125R0423	FOR: FFC1800/125
28	* 1800140R0423	FOR: FFC1800/140
28	* 2000110R0423	FOR: FFC2000/110
28	* 2000125R0423	FOR: FFC2000/125
28	* 2000140R0423	FOR: FFC2000/140
28	* 2000160R0423	FOR: FFC2000/160
29	* 00687R0101	FOR: FFC1050/63, FFC1050/75, FFC1050/90
29	* 00546R0101	FOR: FFC1200/75, FFC1200/90
29	* 00689R0101	FOR: FFC1400/110, FFC1400/75, FFC1400/90
29	* 00690R0101	FOR: FFC1600/110, FFC1600/125, FFC1600/90
29	* 00691R0101	FOR: FFC1800/110, FFC1800/125, FFC1800/140, FFC1800/90
29	* 00692R0101	FOR: FFC2000/110, FFC2000/125, FFC2000/140, FFC2000/160

CODICE

**FFC1050/63, FFC1050/75, FFC1050/90, FFC1200/75, FFC1200/90,
 FFC1400/110, FFC1400/75, FFC1400/90, FFC1600/110, FFC1600/125,
 FFC1600/90, FFC1800/110, FFC1800/125, FFC1800/140, FFC1800/90,
 FFC2000/110, FFC2000/125, FFC2000/140, FFC2000/160**

DESCRIZIONE: FILTRO FLORIDA D. 1050-1200-1400-1600-1800-2000


ITALIANO

POS	CODICE	DESCRIZIONE	QUANTITA'	POS	CODICE	DESCRIZIONE	QUANTITA'
1	CE04180404	MANOMETRO COMPLETO		8	* CE04160833	GRUPPO ENTRATA 110 1800-2000	
2	CE04180405	MANOMETRO 1/8" 3 KG./C "		8	* CE04160834	GRUPPO ENTRATA 125 1800-2000	
3	CE04290101	TAPPO 1" 1/4 SCARICO ANONIM "		8	* CE04160816	GRUPPO ENTRATA 140 1800-2000	
4	CE04260207	COPERCHIO FILTRO COMPLETO		8	* CE04160817	GRUPPO ENTRATA 160 2000	
5	CE04160103	BULLONERIA COPERCHIO FILTRO		9	* CE04160835	KIT USCITE D. 63 FILTRO EUROPE D. 1050	
6	CE04260208	COPERCHIO FILTRO + GUARNIZIONE		9	* CE04160836	KIT USCITE D. 75 FILTRO EUROPE D. 1050	
7	CE04160101	O-RING COPERCHIO		9	* CE04160837	KIT USCITE D. 90 FILTRO EUROPE D. 1050	
8	* CE04160811	GRUPPO ENTRATA 63 1050		9	* CE04160838	KIT USCITE D. 75 FILTRO EUROPE D. 1200-	
8	* CE04160812	GRUPPO ENTRATA 75 1050		9	* CE04160839	KIT USCITE D. 90 FILTRO EUROPE D. 1200-	
8	* CE04160813	GRUPPO ENTRATA 90 1050		9	* CE04160840	KIT USCITE D. 110 FILTRO EUROPE D. 1400	

CODICE **FFC1050/63, FFC1050/75, FFC1050/90, FFC1200/75, FFC1200/90, FFC1400/110, FFC1400/75, FFC1400/90, FFC1600/110, FFC1600/125, FFC1600/90, FFC1800/110, FFC1800/125, FFC1800/140, FFC1800/90, FFC2000/110, FFC2000/125, FFC2000/140, FFC2000/160**

DESCRIZIONE: FILTRO FLORIDA D. 1050-1200-1400-1600-1800-2000

8	* CE04160830	GRUPPO ENTRATA 75 1200-1400	9	* CE04160841	KIT USCITE D. 125 FILTRO EUROPE D. 1600
8	* CE04160831	GRUPPO ENTRATA 90 1200-1400-1600	9	* CE04160842	KIT USCITE D. 90 FILTRO EUROPE D. 1800
8	* CE04160814	GRUPPO ENTRATA 110 1400-1600	9	* CE04160843	KIT USCITE D. 110 FILTRO EUROPE D. 1800
8	* CE04160815	GRUPPO ENTRATA 125 1600	9	* CE04160844	ENSEMBLE SORTIE EUROPE D.125 POUR
8	* CE04160832	GRUPPO ENTRATA 90 1800	9	* CE04160845	KIT USCITE D. 140 FILTRO EUROPE D. 1800
9	* CE04160846	KIT USCITE D. 160 FILTRO EUROPE D. 2000	26	* 105063R0420	KIT COLLETTORE D. 63 - 1050
10	CE04260210	FISSAGGIO MANOMETRO	26	* 105075R0420	KIT COLLETTORE D. 75 / 1050
11	CE04160809	ANELLO COLLO 20 VITI	26	* 105090R0420	KIT COLLETTORE D. 90 / 1050
12	CE04020116	O-RING 255X4	26	* 120075R0420	KIT COLLETTORE D. 75 / 1200
13	CE04160810	COPERCHIO SVUOTAMENTO SABBIA	26	* 120090R0420	KIT COLLETTORE D. 90 / 1200
14	CE04160847	COPERCHIO FILTRO D. 220 NERO	26	* 140075R0420	KIT COLLETTORE D. 75 / 1400
15	CE04260106	GUARNIZIONE FLANGIA FISSAGGIO VALVOL	26	* 140090R0420	KIT COLLETTORE D. 90 / 1400
16	CE04160849	FLANGIA FISSAGGIO COPERCHIO	26	* 1400110R0420	KIT COLLETTORE D. 110 / 1400
17	CE04160850	BULLONERIA FISSAGGIO COPERCHIO M8	26	* 160090R0420	KIT COLLETTORE D. 90 / 1600
18	CE04040113	TAPPO SPURGO E GUARNIZIONE	26	* 1600110R0420	KIT COLLETTORE D. 110 / 1600
19	CE04160808	SCARICO ACQUA 3/4"	26	* 1600125R0420	KIT COLLETTORE D. 125 / 1600
20	CE04160807	VALVOLA A SFERA 3/4"	26	* 180090R0420	KIT COLLETTORE D. 90 / 1800
21	* CE04300916	CANDELOTTO COLLECTORE 1" 225 M "	26	* 1800110R0420	KIT COLLETTORE D. 110 / 1800
21	* CE04300915	CANDELOTTO COLLECTORE 1" 175 M "	26	* 1800125R0420	KIT COLLETTORE D. 125 / 1800
21	* CE04290109	CANDELOTTO 1" 265 M/M "	26	* 1800140R0420	KIT COLLETTORE D. 140 / 1800
22	* CE04260418	MANICOTTO DA 1" PER CANDELOTT "	26	* 2000110R0420	KIT COLLETTORE D. 110 / 2000
23	* CE04260419	CANDELOTTO COLLECTORE 1" 100M "	26	* 2000125R0420	KIT COLLETTORE D. 125 / 2000
24	* CE04260401	GRUPPO CANDELOTTO COLLECTORE D. 63	26	* 2000140R0420	KIT COLLETTORE D. 140 / 2000
24	* CE04260402	GRUPPO CANDELOTTO COLLECTORE D. 75	26	* 2000160R0420	KIT COLLETTORE D. 160 / 2000
24	* CE04260403	GRUPPO CANDELOTTO COLLECTORE D. 90	27	* 180090R0422	SUPPORTO COLLETTORE D.90 - 1800
24	* CE04260404	GRUPPO CANDELOTTO COLLECTORE D. 110	27	* 1800110R0422	SUPPORTO COLLETTORE D.110 - 1800
24	* CE04260405	GRUPPO CANDELOTTO COLLECTORE D. 125	27	* 1800125R0422	SUPPORTO COLLETTORE D.125 - 1800
24	* CE04260406	GRUPPO CANDELOTTO COLLECTORE D. 140	27	* 1800140R0422	SUPPORTO COLLETTORE D.140 - 1800
25	* 105063R0430	RACCORDO DIFFUSORE D.63 / 1050	27	* 2000110R0422	SUPPORTO COLLETTORE D.110 - 2000
25	* 105075R0430	RACCORDO DIFFUSORE D.75 / 1050	27	* 2000125R0422	SUPPORTO COLLETTORE D.125 - 2000
25	* 105090R0430	RACCORDO DIFFUSORE D.90 / 1050	27	* 2000140R0422	SUPPORTO COLLETTORE D.140 - 2000
25	* 120075R0430	RACCORDO DIFFUSORE D.75 / 1200	27	* 2000160R0422	SUPPORTO COLLETTORE D.160 - 2000
25	* 120090R0430	RACCORDO DIFFUSORE D.90 / 1200	28	* 180090R0423	SUPPORTO DIFFUSORE FILTRO D.90 - 1800
25	* 140075R0430	RACCORDO DIFFUSORE D.75 / 1400	28	* 1800110R0423	SUPPORTO DIFFUSORE FILTRO D.110 - 1800
25	* 140090R0430	RACCORDO DIFFUSORE D.90 / 1400	28	* 1800125R0423	SUPPORTO DIFFUSORE FILTRO D.125 - 1800
25	* 1400110R0430	RACCORDO DIFFUSORE D.110 / 1400	28	* 1800140R0423	SUPPORTO DIFFUSORE FILTRO D.140 - 1800
25	* 160090R0430	RACCORDO DIFFUSORE D.90 / 1600	28	* 2000110R0423	SUPPORTO DIFFUSORE FILTRO D.110 - 2000
25	* 1600110R0430	RACCORDO DIFFUSORE D.110 / 1600	28	* 2000125R0423	SUPPORTO DIFFUSORE FILTRO D.125 - 2000
25	* 1600125R0430	RACCORDO DIFFUSORE D.125 / 1600	28	* 2000140R0423	SUPPORTO DIFFUSORE FILTRO D.140 - 2000
25	* 180090R0430	RACCORDO DIFFUSORE D.90 / 1800	28	* 2000160R0423	SUPPORTO DIFFUSORE FILTRO D.160 - 2000
25	* 1800110R0430	RACCORDO DIFFUSORE D.110 / 1800	29	* 00687R0101	BASE FILTRO D 1050
25	* 1800125R0430	RACCORDO DIFFUSORE D.125 / 1800	29	* 00546R0101	BASE FILTRO D 1200
25	* 1800140R0430	RACCORDO DIFFUSORE D.140 / 1800	29	* 00689R0101	BASE FILTRO D 1400
25	* 2000110R0430	RACCORDO DIFFUSORE D.110 / 2000	29	* 00690R0101	BASE FILTRO D 1600
25	* 2000125R0430	RACCORDO DIFFUSORE D.125 / 2000	29	* 00691R0101	BASE FILTRO D 1800
25	* 2000140R0430	RACCORDO DIFFUSORE D.140 / 2000	29	* 00692R0101	BASE FILTRO 2000
25	* 2000160R0430	RACCORDO DIFFUSORE D.160 / 2000			

CODICE **FFC1050/63, FFC1050/75, FFC1050/90, FFC1200/75, FFC1200/90, FFC1400/110, FFC1400/75, FFC1400/90, FFC1600/110, FFC1600/125, FFC1600/90, FFC1800/110, FFC1800/125, FFC1800/140, FFC1800/90, FFC2000/110, FFC2000/125, FFC2000/140, FFC2000/160**

DESCRIZIONE: FILTRO FLORIDA D. 1050-1200-1400-1600-1800-2000

OSSERVAZIONI

POS	CODICE	OSSERVAZIONI
8	*CE04160811	PER: FFC1050/63
8	*CE04160812	PER: FFC1050/75
8	*CE04160813	PER: FFC1050/90
8	*CE04160830	PER: FFC1200/75, FFC1400/75
8	*CE04160831	PER: FFC1200/90, FFC1400/90, FFC1600/90
8	*CE04160814	PER: FFC1400/110, FFC1600/110
8	*CE04160815	PER: FFC1600/125
8	*CE04160832	PER: FFC1800/90
8	*CE04160833	PER: FFC1800/110, FFC2000/110
8	*CE04160834	PER: FFC1800/125, FFC2000/125
8	*CE04160816	PER: FFC1800/140, FFC2000/140
8	*CE04160817	PER: FFC2000/160
9	*CE04160835	PER: FFC1050/63
9	*CE04160836	PER: FFC1050/75
9	*CE04160837	PER: FFC1050/90
9	*CE04160838	PER: FFC1200/75, FFC1400/75
9	*CE04160839	PER: FFC1200/90, FFC1400/90, FFC1600/90
9	*CE04160840	PER: FFC1400/110, FFC1600/110
9	*CE04160841	PER: FFC1600/125
9	*CE04160842	PER: FFC1800/90
9	*CE04160843	PER: FFC1800/110, FFC2000/110
9	*CE04160844	PER: FFC1800/125, FFC2000/125
9	*CE04160845	PER: FFC1800/140, FFC2000/140
9	*CE04160846	PER: FFC2000/160
21	*CE04300916	PER: FFC1050/63 [6UT], FFC1050/75 [6UT], FFC1050/90 [6UT], FFC1400/110 [6UT], FFC1400/75 [6UT], FFC1400/90 [6UT], FFC1800/110 [6UT], FFC1800/125 [6UT], FFC1800/140 [6UT], FFC1800/90 [6UT], FFC2000/110 [9UT], FFC2000/125 [9UT], FFC2000/140 [9UT], FFC2000/160 [9UT]
21	*CE04300915	PER: FFC1800/110 [7UT], FFC1800/125 [7UT], FFC1800/140 [7UT], FFC1800/90 [7UT]
21	*CE04290109	PER: FFC1200/75 [6UT], FFC1200/90 [6UT], FFC1600/110 [6UT], FFC1600/125 [6UT], FFC1600/90 [6UT], FFC2000/110 [4UT], FFC2000/125 [4UT], FFC2000/140 [4UT], FFC2000/160 [4UT]
22	*CE04260418	PER: FFC1050/63 [3UT], FFC1050/75 [3UT], FFC1050/90 [3UT], FFC1200/75 [3UT], FFC1200/90 [3UT], FFC1400/110 [6UT], FFC1400/75 [6UT], FFC1400/90 [6UT], FFC1600/110 [6UT], FFC1600/125 [6UT], FFC1600/90 [6UT], FFC1800/110 [14UT], FFC1800/125 [14UT], FFC1800/140 [14UT], FFC1800/90 [14UT], FFC2000/110 [20UT], FFC2000/125 [20UT], FFC2000/140 [20UT], FFC2000/160 [20UT]
23	*CE04260419	PER: FFC1050/63 [3UT], FFC1050/75 [3UT], FFC1050/90 [3UT], FFC1200/75 [3UT], FFC1200/90 [3UT], FFC1400/110 [6UT], FFC1400/75 [6UT], FFC1400/90 [6UT], FFC1600/110 [6UT], FFC1600/125 [6UT], FFC1600/90 [6UT], FFC1800/110 [14UT], FFC1800/125 [14UT], FFC1800/140 [14UT], FFC1800/90 [14UT], FFC2000/110 [20UT], FFC2000/125 [20UT], FFC2000/140 [20UT], FFC2000/160 [20UT]
24	*CE04260401	PER: FFC1050/63, FFC1050/75, FFC1050/90
24	*CE04260402	PER: FFC1200/75, FFC1200/90
24	*CE04260403	PER: FFC1400/110, FFC1400/75, FFC1400/90
24	*CE04260404	PER: FFC1600/110, FFC1600/125, FFC1600/90
24	*CE04260405	PER: FFC1800/110, FFC1800/125, FFC1800/140, FFC1800/90
24	*CE04260406	PER: FFC2000/110, FFC2000/125, FFC2000/140, FFC2000/160
25	*105063R0430	PER: FFC1050/63

CODICE **FFC1050/63, FFC1050/75, FFC1050/90, FFC1200/75, FFC1200/90,
 FFC1400/110, FFC1400/75, FFC1400/90, FFC1600/110, FFC1600/125,
 FFC1600/90, FFC1800/110, FFC1800/125, FFC1800/140, FFC1800/90,
 FFC2000/110, FFC2000/125, FFC2000/140, FFC2000/160**

DESCRIZIONE: FILTRO FLORIDA D. 1050-1200-1400-1600-1800-2000

25	* 105075R0430	PER: FFC1050/75
25	* 105090R0430	PER: FFC1050/90
25	* 120075R0430	PER: FFC1200/75
25	* 120090R0430	PER: FFC1200/90
25	* 140075R0430	PER: FFC1400/75
25	* 140090R0430	PER: FFC1400/90
25	* 1400110R0430	PER: FFC1400/110
25	* 160090R0430	PER: FFC1600/90
25	* 1600110R0430	PER: FFC1600/110
25	* 1600125R0430	PER: FFC1600/125
25	* 180090R0430	PER: FFC1800/90
25	* 1800110R0430	PER: FFC1800/110
25	* 1800125R0430	PER: FFC1800/125
25	* 1800140R0430	PER: FFC1800/140
25	* 2000110R0430	PER: FFC2000/110
25	* 2000125R0430	PER: FFC2000/125
25	* 2000140R0430	PER: FFC2000/140
25	* 2000160R0430	PER: FFC2000/160
26	* 105063R0420	PER: FFC1050/63
26	* 105075R0420	PER: FFC1050/75
26	* 105090R0420	PER: FFC1050/90
26	* 120075R0420	PER: FFC1200/75
26	* 120090R0420	PER: FFC1200/90
26	* 140075R0420	PER: FFC1400/75
26	* 140090R0420	PER: FFC1400/90
26	* 1400110R0420	PER: FFC1400/110
26	* 160090R0420	PER: FFC1600/90
26	* 1600110R0420	PER: FFC1600/110
26	* 1600125R0420	PER: FFC1600/125
26	* 180090R0420	PER: FFC1800/90
26	* 1800110R0420	PER: FFC1800/110
26	* 1800125R0420	PER: FFC1800/125
26	* 1800140R0420	PER: FFC1800/140
26	* 2000110R0420	PER: FFC2000/110
26	* 2000125R0420	PER: FFC2000/125
26	* 2000140R0420	PER: FFC2000/140
26	* 2000160R0420	PER: FFC2000/160
27	* 180090R0422	PER: FFC1800/90
27	* 1800110R0422	PER: FFC1800/110
27	* 1800125R0422	PER: FFC1800/125
27	* 1800140R0422	PER: FFC1800/140
27	* 2000110R0422	PER: FFC2000/110
27	* 2000125R0422	PER: FFC2000/125
27	* 2000140R0422	PER: FFC2000/140

CODICE **FFC1050/63, FFC1050/75, FFC1050/90, FFC1200/75, FFC1200/90,
FFC1400/110, FFC1400/75, FFC1400/90, FFC1600/110, FFC1600/125,
FFC1600/90, FFC1800/110, FFC1800/125, FFC1800/140, FFC1800/90,
FFC2000/110, FFC2000/125, FFC2000/140, FFC2000/160**

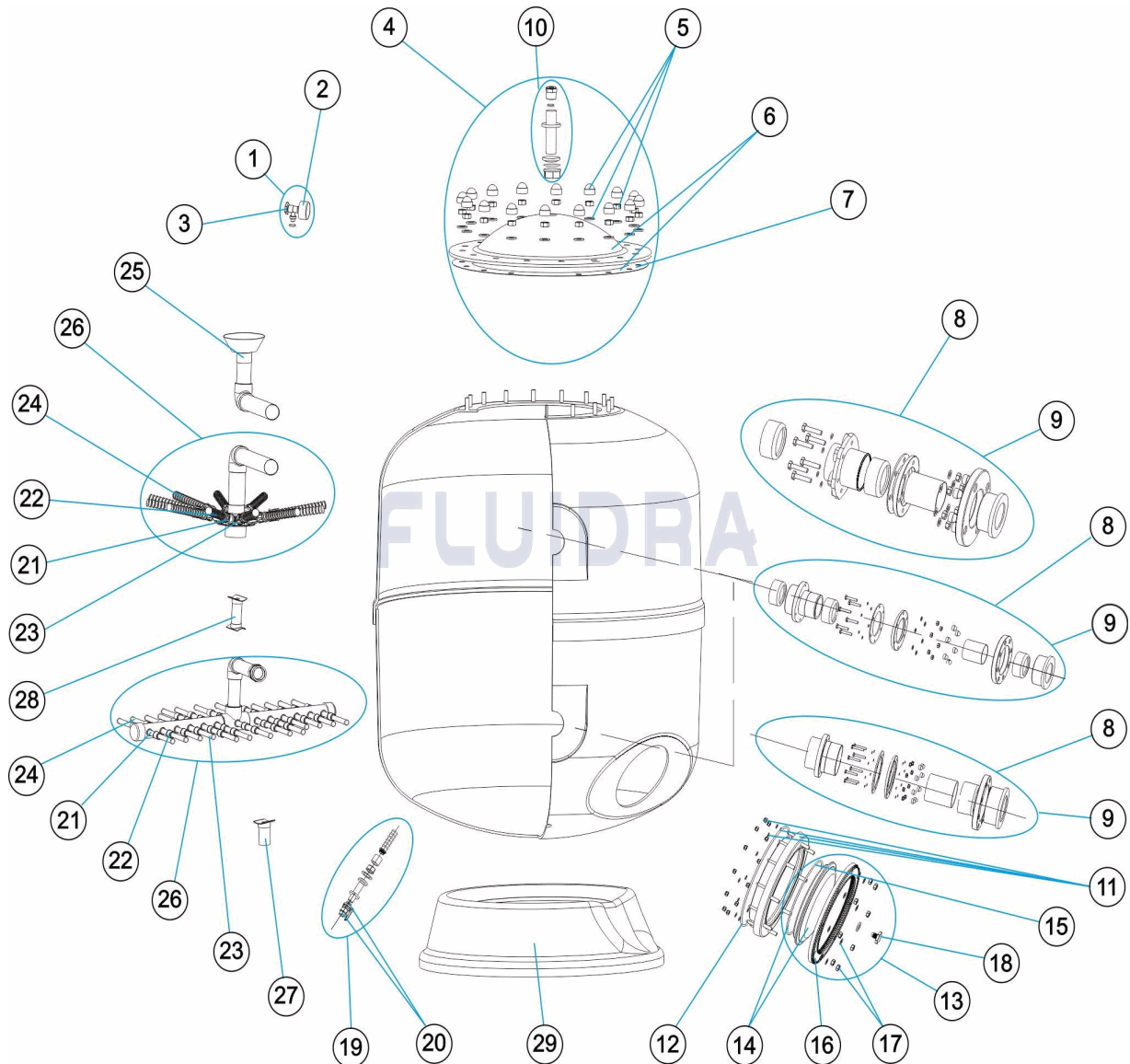
DESCRIZIONE: FILTRO FLORIDA D. 1050-1200-1400-1600-1800-2000

27	* 2000160R0422	PER: FFC2000/160
28	* 180090R0423	PER: FFC1800/90
28	* 1800110R0423	PER: FFC1800/110
28	* 1800125R0423	PER: FFC1800/125
28	* 1800140R0423	PER: FFC1800/140
28	* 2000110R0423	PER: FFC2000/110
28	* 2000125R0423	PER: FFC2000/125
28	* 2000140R0423	PER: FFC2000/140
28	* 2000160R0423	PER: FFC2000/160
29	* 00687R0101	PER: FFC1050/63, FFC1050/75, FFC1050/90
29	* 00546R0101	PER: FFC1200/75, FFC1200/90
29	* 00689R0101	PER: FFC1400/110, FFC1400/75, FFC1400/90
29	* 00690R0101	PER: FFC1600/110, FFC1600/125, FFC1600/90
29	* 00691R0101	PER: FFC1800/110, FFC1800/125, FFC1800/140, FFC1800/90
29	* 00692R0101	PER: FFC2000/110, FFC2000/125, FFC2000/140, FFC2000/160

CODE

**FFC1050/63, FFC1050/75, FFC1050/90, FFC1200/75, FFC1200/90,
 FFC1400/110, FFC1400/75, FFC1400/90, FFC1600/110, FFC1600/125,
 FFC1600/90, FFC1800/110, FFC1800/125, FFC1800/140, FFC1800/90,
 FFC2000/110, FFC2000/125, FFC2000/140, FFC2000/160**

BESCHREIBUNG: FILTER FLORIDA D. 1050-1200-1400-1600-1800-2000


DEUTSCH

POS	CODE	BESCHREIBUNG	MENGE	POS	CODE	BESCHREIBUNG	MENGE
1	CE04180404	MANOMETER KOMPLETT		8	* CE04160833	SET EINGANG EUROPE D. 110 FÜR 1800 - 2	
2	CE04180405	MANOMETER 1/8" 3 KG/C "		8	* CE04160834	SET EINGANG EUROPE D. 125 FÜR 1800 - 2	
3	CE04290101	ABLASSSTOPFEN 1/4" ANONY "		8	* CE04160816	SET EINGANG EUROPE D. 140 FÜR 1800 - 2	
4	CE04260207	FILTERDECKEL KOMPLETT		8	* CE04160817	SET EINGANG EUROPE D. 160 FÜR 2000	
5	CE04160103	SCHRAUBENSATZ FILTERDECKEL		9	* CE04160835	SET AUSGANG EUROPE D. 63 FÜR 1050	
6	CE04260208	FILTERDECKEL UND DICHTUNG		9	* CE04160836	SET AUSGANG EUROPE D. 75 FÜR 1050	
7	CE04160101	O-RING ABDECKUNG		9	* CE04160837	SET AUSGANG EUROPE D. 90 FÜR 1050	
8	* CE04160811	SET EINGANG EUROPE D. 63 FÜR 1050		9	* CE04160838	SET AUSGANG EUROPE D. 75 FÜR 1200 - 1	
8	* CE04160812	SET EINGANG EUROPE D. 75 FÜR 1050		9	* CE04160839	SET AUSGANG EUROPE D. 90 FÜR 1200 - 1	
8	* CE04160813	SET EINGANG EUROPE D. 90 FÜR 1050		9	* CE04160840	SET AUSGANG EUROPE D. 110 FÜR 1400 -	

CODE

**FFC1050/63, FFC1050/75, FFC1050/90, FFC1200/75, FFC1200/90,
 FFC1400/110, FFC1400/75, FFC1400/90, FFC1600/110, FFC1600/125,
 FFC1600/90, FFC1800/110, FFC1800/125, FFC1800/140, FFC1800/90,
 FFC2000/110, FFC2000/125, FFC2000/140, FFC2000/160**

BESCHREIBUNG: FILTER FLORIDA D. 1050-1200-1400-1600-1800-2000

8	* CE04160830	SET EINGANG EUROPE D. 75 FÜR 1200 - 1.	9	* CE04160841	SET AUSGANG EUROPE D. 125 FÜR 1600
8	* CE04160831	SET EINGANG EUROPE D. 90 FÜR 1200 - 1.	9	* CE04160842	SET AUSGANG EUROPE D. 90 FÜR 1800
8	* CE04160814	SET EINGANG EUROPE D. 110 FÜR 1400 -	9	* CE04160843	SET AUSGANG EUROPE D. 110 FÜR 1800 -
8	* CE04160815	SET EINGANG EUROPE D. 125 FÜR 1600	9	* CE04160844	SET AUSGANG EUROPE D. 125 FÜR 1800 -
8	* CE04160832	SET EINGANG EUROPE D. 90 FÜR 1800	9	* CE04160845	SET AUSGANG EUROPE D. 140 FÜR 1800 -
9	* CE04160846	SET AUSGANG EUROPE D. 160 FÜR 2000	26	* 105063R0420	SAMMELROHRSET D. 63 FÜR 1050
10	CE04260210	FIXIERUNG MANOMETER	26	* 105075R0420	SAMMELROHRSET D. 75 / 1050
11	CE04160809	FILTERRING 20 SCHRAUBEN	26	* 105090R0420	SAMMELROHRSET D. 90 / 1050
12	CE04020116	O-RING 255 X 4	26	* 120075R0420	SAMMELROHRSET D. 75 / 1200
13	CE04160810	ABDECKUNG SANDAUSLASS	26	* 120090R0420	SAMMELROHRSET D. 90 / 1200
14	CE04160847	FILTERDECKEL D. 220 SCHWARZ	26	* 140075R0420	SAMMELROHRSET D. 75 / 1400
15	CE04260106	DICHTUNG FIXIERRING VENTIL	26	* 140090R0420	SAMMELROHRSET D. 90 / 1400
16	CE04160849	FIXIERRING ABDECKUNG	26	* 1400110R0420	SAMMELROHRSET D. 110 / 1400
17	CE04160850	FIXIERSCHRAUBEN ABDECKUNG M8	26	* 160090R0420	SAMMELROHRSET D. 90 / 1600
18	CE04040113	ABLASSSTOPFEN UND DICHTUNG	26	* 1600110R0420	SAMMELROHRSET D. 110 / 1600
19	CE04160808	WASSERABLASS 3/4"	26	* 1600125R0420	SAMMELROHRSET D. 125 / 1600
20	CE04160807	KUGELVENTIL 3/4"	26	* 180090R0420	SAMMELROHRSET D. 90 / 1800
21	* CE04300916	FILTERSTERN-SCHLITZROHR 1" 225 M "	26	* 1800110R0420	SAMMELROHRSET D. 110 / 1800
21	* CE04300915	FILTERSTERN-SCHLITZROHR 1" 175 M "	26	* 1800125R0420	SAMMELROHRSET D. 125 / 1800
21	* CE04290109	FILTERSTERN-SCHLITZROHR 1" 265 M "	26	* 1800140R0420	SAMMELROHRSET D. 140 / 1800
22	* CE04260418	NIPPEL ANSCHLUSSVERBINDUNG 1"	26	* 2000110R0420	SAMMELROHRSET D. 110 / 2000
23	* CE04260419	FILTERSTERN-SCHLITZROHR 1" 100 M "	26	* 2000125R0420	SAMMELROHRSET D. 125 / 2000
24	* CE04260401	SET FILTERSTERN-SCHLITZROHR D. 950 -	26	* 2000140R0420	SAMMELROHRSET D. 140 / 2000
24	* CE04260402	SET FILTERSTERN-SCHLITZROHR D. 1200	26	* 2000160R0420	SAMMELROHRSET D. 160 / 2000
24	* CE04260403	SET FILTERSTERN-SCHLITZROHR D. 1400	27	* 180090R0422	HALTERUNG SAMMELROHR D. 90 - 1800
24	* CE04260404	SET FILTERSTERN-SCHLITZROHR D. 1600	27	* 1800110R0422	HALTERUNG SAMMELROHR D. 110 - 1800
24	* CE04260405	SET FILTERSTERN-SCHLITZROHR D. 1800	27	* 1800125R0422	HALTERUNG SAMMELROHR D. 125 - 1800
24	* CE04260406	SET FILTERSTERN-SCHLITZROHR D. 2000	27	* 1800140R0422	HALTERUNG SAMMELROHR D. 140 - 1800
25	* 105063R0430	SET WASSERVERTEILER D. 63 / 1050	27	* 2000110R0422	HALTERUNG SAMMELROHR D. 110 - 2000
25	* 105075R0430	SET WASSERVERTEILER D. 75 / 1050	27	* 2000125R0422	HALTERUNG SAMMELROHR D. 125 - 2000
25	* 105090R0430	SET WASSERVERTEILER D. 90 / 1050	27	* 2000140R0422	HALTERUNG SAMMELROHR D. 140 - 2000
25	* 120075R0430	SET WASSERVERTEILER D. 75 / 1200	27	* 2000160R0422	HALTERUNG SAMMELROHR D. 160 - 2000
25	* 120090R0430	SET WASSERVERTEILER D. 90 / 1200	28	* 180090R0423	HALTERUNG WASSERVERTEILER D. 90 - 1800
25	* 140075R0430	SET WASSERVERTEILER D. 75 / 1400	28	* 1800110R0423	HALTERUNG WASSERVERTEILER D. 110 - 1800
25	* 140090R0430	SET WASSERVERTEILER D. 90 / 1400	28	* 1800125R0423	HALTERUNG WASSERVERTEILER D. 125 - 1800
25	* 1400110R0430	SET WASSERVERTEILER D. 110 / 1400	28	* 1800140R0423	HALTERUNG WASSERVERTEILER D. 140 - 1800
25	* 160090R0430	SET WASSERVERTEILER D. 90 / 1600	28	* 2000110R0423	HALTERUNG WASSERVERTEILER D. 110 - 2000
25	* 1600110R0430	SET WASSERVERTEILER D. 110 / 1600	28	* 2000125R0423	HALTERUNG WASSERVERTEILER D. 125 - 2000
25	* 1600125R0430	SET WASSERVERTEILER D. 125 / 1600	28	* 2000140R0423	HALTERUNG WASSERVERTEILER D. 140 - 2000
25	* 180090R0430	SET WASSERVERTEILER D. 90 / 1800	28	* 2000160R0423	HALTERUNG WASSERVERTEILER D. 160 - 2000
25	* 1800110R0430	SET WASSERVERTEILER D. 110 / 1800	29	* 00687R0101	FILTERFUSS 1050
25	* 1800125R0430	SET WASSERVERTEILER D. 125 / 1800	29	* 00546R0101	FILTERFUSS D. 1200
25	* 1800140R0430	SET WASSERVERTEILER D. 140 / 1800	29	* 00689R0101	FILTERFUSS D. 1400
25	* 2000110R0430	SET WASSERVERTEILER D. 110 / 2000	29	* 00690R0101	FILTERFUSS D. 1600
25	* 2000125R0430	SET WASSERVERTEILER D. 125 / 2000	29	* 00691R0101	FILTERFUSS 1800
25	* 2000140R0430	SET WASSERVERTEILER D. 140 / 2000	29	* 00692R0101	FILTERFUSS D. 2000
25	* 2000160R0430	SET WASSERVERTEILER D. 160 / 2000			

CODE **FFC1050/63, FFC1050/75, FFC1050/90, FFC1200/75, FFC1200/90,**
FFC1400/110, FFC1400/75, FFC1400/90, FFC1600/110, FFC1600/125,
FFC1600/90, FFC1800/110, FFC1800/125, FFC1800/140, FFC1800/90,
FFC2000/110, FFC2000/125, FFC2000/140, FFC2000/160

BESCHREIBUNG: FILTER FLORIDA D. 1050-1200-1400-1600-1800-2000

HINWEISE

POS	CODE	HINWEISE
8	*CE04160811	FÜR: FFC1050/63
8	*CE04160812	FÜR: FFC1050/75
8	*CE04160813	FÜR: FFC1050/90
8	*CE04160830	FÜR: FFC1200/75, FFC1400/75
8	*CE04160831	FÜR: FFC1200/90, FFC1400/90, FFC1600/90
8	*CE04160814	FÜR: FFC1400/110, FFC1600/110
8	*CE04160815	FÜR: FFC1600/125
8	*CE04160832	FÜR: FFC1800/90
8	*CE04160833	FÜR: FFC1800/110, FFC2000/110
8	*CE04160834	FÜR: FFC1800/125, FFC2000/125
8	*CE04160816	FÜR: FFC1800/140, FFC2000/140
8	*CE04160817	FÜR: FFC2000/160
9	*CE04160835	FÜR: FFC1050/63
9	*CE04160836	FÜR: FFC1050/75
9	*CE04160837	FÜR: FFC1050/90
9	*CE04160838	FÜR: FFC1200/75, FFC1400/75
9	*CE04160839	FÜR: FFC1200/90, FFC1400/90, FFC1600/90
9	*CE04160840	FÜR: FFC1400/110, FFC1600/110
9	*CE04160841	FÜR: FFC1600/125
9	*CE04160842	FÜR: FFC1800/90
9	*CE04160843	FÜR: FFC1800/110, FFC2000/110
9	*CE04160844	FÜR: FFC1800/125, FFC2000/125
9	*CE04160845	FÜR: FFC1800/140, FFC2000/140
9	*CE04160846	FÜR: FFC2000/160
21	*CE04300916	FÜR: FFC1050/63 [6UT], FFC1050/75 [6UT], FFC1050/90 [6UT], FFC1400/110 [6UT], FFC1400/75 [6UT], FFC1400/90 [6UT], FFC1800/110 [6UT], FFC1800/125 [6UT], FFC1800/140 [6UT], FFC1800/90 [6UT], FFC2000/110 [9UT], FFC2000/125 [9UT], FFC2000/140 [9UT], FFC2000/160 [9UT]
21	*CE04300915	FÜR: FFC1800/110 [7UT], FFC1800/125 [7UT], FFC1800/140 [7UT], FFC1800/90 [7UT]
21	*CE04290109	FÜR: FFC1200/75 [6UT], FFC1200/90 [6UT], FFC1600/110 [6UT], FFC1600/125 [6UT], FFC1600/90 [6UT], FFC2000/110 [4UT], FFC2000/125 [4UT], FFC2000/140 [4UT], FFC2000/160 [4UT]
22	*CE04260418	FÜR: FFC1050/63 [3UT], FFC1050/75 [3UT], FFC1050/90 [3UT], FFC1200/75 [3UT], FFC1200/90 [3UT], FFC1400/110 [6UT], FFC1400/75 [6UT], FFC1400/90 [6UT], FFC1600/110 [6UT], FFC1600/125 [6UT], FFC1600/90 [6UT], FFC1800/110 [14UT], FFC1800/125 [14UT], FFC1800/140 [14UT], FFC1800/90 [14UT], FFC2000/110 [20UT], FFC2000/125 [20UT], FFC2000/140 [20UT], FFC2000/160 [20UT]
23	*CE04260419	FÜR: FFC1050/63 [3UT], FFC1050/75 [3UT], FFC1050/90 [3UT], FFC1200/75 [3UT], FFC1200/90 [3UT], FFC1400/110 [6UT], FFC1400/75 [6UT], FFC1400/90 [6UT], FFC1600/110 [6UT], FFC1600/125 [6UT], FFC1600/90 [6UT], FFC1800/110 [14UT], FFC1800/125 [14UT], FFC1800/140 [14UT], FFC1800/90 [14UT], FFC2000/110 [20UT], FFC2000/125 [20UT], FFC2000/140 [20UT], FFC2000/160 [20UT]
24	*CE04260401	FÜR: FFC1050/63, FFC1050/75, FFC1050/90
24	*CE04260402	FÜR: FFC1200/75, FFC1200/90
24	*CE04260403	FÜR: FFC1400/110, FFC1400/75, FFC1400/90
24	*CE04260404	FÜR: FFC1600/110, FFC1600/125, FFC1600/90
24	*CE04260405	FÜR: FFC1800/110, FFC1800/125, FFC1800/140, FFC1800/90
24	*CE04260406	FÜR: FFC2000/110, FFC2000/125, FFC2000/140, FFC2000/160
25	*105063R0430	FÜR: FFC1050/63

CODE **FFC1050/63, FFC1050/75, FFC1050/90, FFC1200/75, FFC1200/90,**
FFC1400/110, FFC1400/75, FFC1400/90, FFC1600/110, FFC1600/125,
FFC1600/90, FFC1800/110, FFC1800/125, FFC1800/140, FFC1800/90,
FFC2000/110, FFC2000/125, FFC2000/140, FFC2000/160

BESCHREIBUNG: FILTER FLORIDA D. 1050-1200-1400-1600-1800-2000

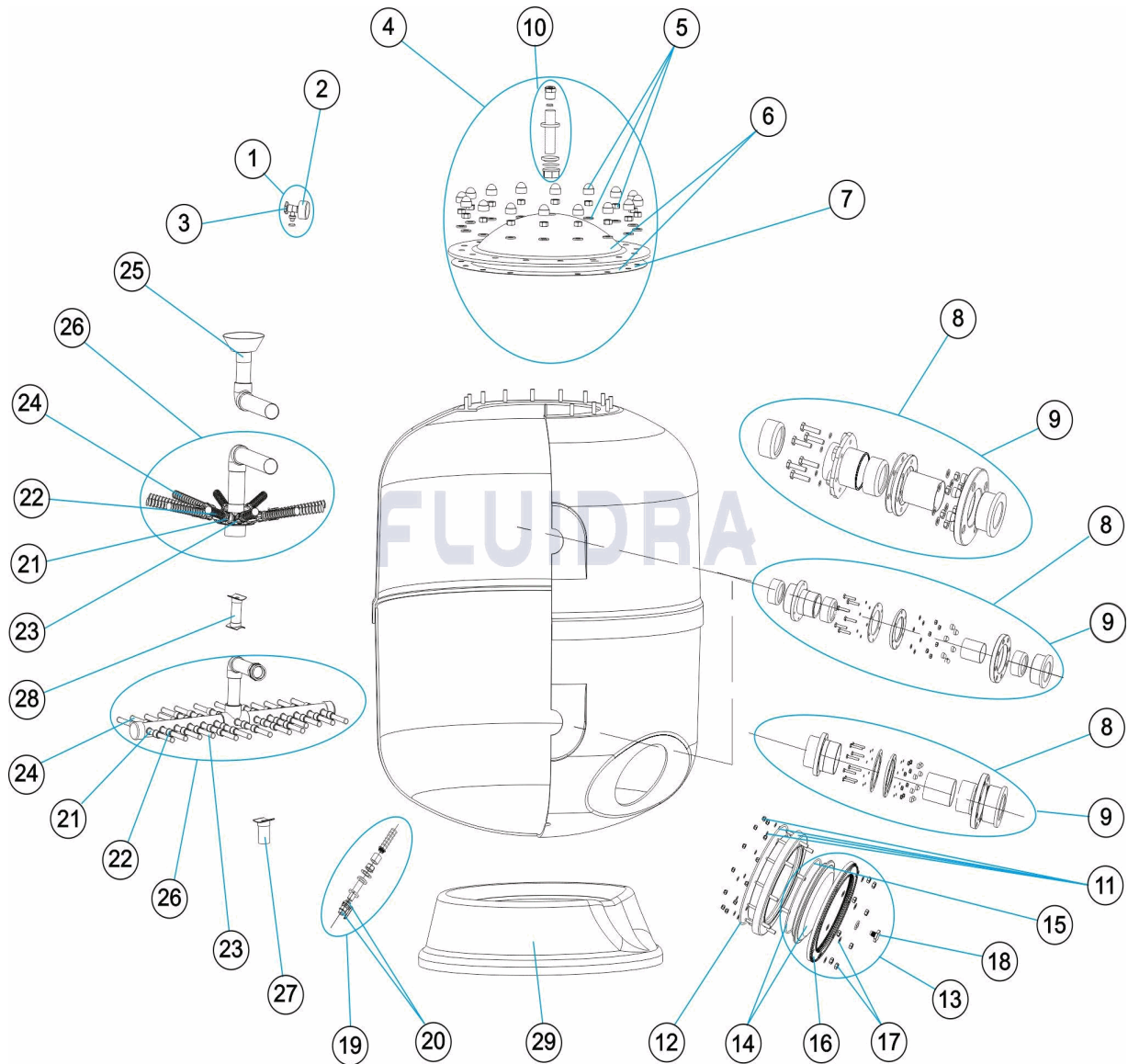
25	* 105075R0430	FÜR: FFC1050/75
25	* 105090R0430	FÜR: FFC1050/90
25	* 120075R0430	FÜR: FFC1200/75
25	* 120090R0430	FÜR: FFC1200/90
25	* 140075R0430	FÜR: FFC1400/75
25	* 140090R0430	FÜR: FFC1400/90
25	* 1400110R0430	FÜR: FFC1400/110
25	* 160090R0430	FÜR: FFC1600/90
25	* 1600110R0430	FÜR: FFC1600/110
25	* 1600125R0430	FÜR: FFC1600/125
25	* 180090R0430	FÜR: FFC1800/90
25	* 1800110R0430	FÜR: FFC1800/110
25	* 1800125R0430	FÜR: FFC1800/125
25	* 1800140R0430	FÜR: FFC1800/140
25	* 2000110R0430	FÜR: FFC2000/110
25	* 2000125R0430	FÜR: FFC2000/125
25	* 2000140R0430	FÜR: FFC2000/140
25	* 2000160R0430	FÜR: FFC2000/160
26	* 105063R0420	FÜR: FFC1050/63
26	* 105075R0420	FÜR: FFC1050/75
26	* 105090R0420	FÜR: FFC1050/90
26	* 120075R0420	FÜR: FFC1200/75
26	* 120090R0420	FÜR: FFC1200/90
26	* 140075R0420	FÜR: FFC1400/75
26	* 140090R0420	FÜR: FFC1400/90
26	* 1400110R0420	FÜR: FFC1400/110
26	* 160090R0420	FÜR: FFC1600/90
26	* 1600110R0420	FÜR: FFC1600/110
26	* 1600125R0420	FÜR: FFC1600/125
26	* 180090R0420	FÜR: FFC1800/90
26	* 1800110R0420	FÜR: FFC1800/110
26	* 1800125R0420	FÜR: FFC1800/125
26	* 1800140R0420	FÜR: FFC1800/140
26	* 2000110R0420	FÜR: FFC2000/110
26	* 2000125R0420	FÜR: FFC2000/125
26	* 2000140R0420	FÜR: FFC2000/140
26	* 2000160R0420	FÜR: FFC2000/160
27	* 180090R0422	FÜR: FFC1800/90
27	* 1800110R0422	FÜR: FFC1800/110
27	* 1800125R0422	FÜR: FFC1800/125
27	* 1800140R0422	FÜR: FFC1800/140
27	* 2000110R0422	FÜR: FFC2000/110
27	* 2000125R0422	FÜR: FFC2000/125
27	* 2000140R0422	FÜR: FFC2000/140

CODE

**FFC1050/63, FFC1050/75, FFC1050/90, FFC1200/75, FFC1200/90,
FFC1400/110, FFC1400/75, FFC1400/90, FFC1600/110, FFC1600/125,
FFC1600/90, FFC1800/110, FFC1800/125, FFC1800/140, FFC1800/90,
FFC2000/110, FFC2000/125, FFC2000/140, FFC2000/160**

BESCHREIBUNG: FILTER FLORIDA D. 1050-1200-1400-1600-1800-2000

27	* 2000160R0422	FÜR: FFC2000/160
28	* 180090R0423	FÜR: FFC1800/90
28	* 1800110R0423	FÜR: FFC1800/110
28	* 1800125R0423	FÜR: FFC1800/125
28	* 1800140R0423	FÜR: FFC1800/140
28	* 2000110R0423	FÜR: FFC2000/110
28	* 2000125R0423	FÜR: FFC2000/125
28	* 2000140R0423	FÜR: FFC2000/140
28	* 2000160R0423	FÜR: FFC2000/160
29	* 00687R0101	FÜR: FFC1050/63, FFC1050/75, FFC1050/90
29	* 00546R0101	FÜR: FFC1200/75, FFC1200/90
29	* 00689R0101	FÜR: FFC1400/110, FFC1400/75, FFC1400/90
29	* 00690R0101	FÜR: FFC1600/110, FFC1600/125, FFC1600/90
29	* 00691R0101	FÜR: FFC1800/110, FFC1800/125, FFC1800/140, FFC1800/90
29	* 00692R0101	FÜR: FFC2000/110, FFC2000/125, FFC2000/140, FFC2000/160

CODIGO
**FFC1050/63, FFC1050/75, FFC1050/90, FFC1200/75, FFC1200/90,
 FFC1400/110, FFC1400/75, FFC1400/90, FFC1600/110, FFC1600/125,
 FFC1600/90, FFC1800/110, FFC1800/125, FFC1800/140, FFC1800/90,
 FFC2000/110, FFC2000/125, FFC2000/140, FFC2000/160**
DESCRICAÇÃO: FILTRO FLORIDA D. 1050-1200-1400-1600-1800-2000

PORTUGUES

POS	CODIGO	DESCRICAÇÃO	JANTIDADE	POS	CODIGO	DESCRICAÇÃO	JANTIDADE
1	CE04180404	MANÓMETRO COMPLETO		8	* CE04160833	CONJUNTO ENTRADA 110 1800-2000	
2	CE04180405	MANOMETRO 1/8" 3 KG./C "		8	* CE04160834	CONJUNTO ENTRADA 125 1800-2000	
3	CE04290101	TAMPAO PURGA 1/4" ANONIM "		8	* CE04160816	CONJUNTO ENTRADA 140 1800-2000	
4	CE04260207	TAMPA FILTRO COMPLETO		8	* CE04160817	CONJUNTO ENTRADA 160 2000	
5	CE04160103	PARAFUSOS TAMPA FILTRO		9	* CE04160835	CONJUNTO SAIDA EUROPE D. 63 PARA 10E	
6	CE04260208	TAMPA FILTRO + JUNTA		9	* CE04160836	CONJUNTO SAIDA EUROPE D. 75 PARA 10E	
7	CE04160101	JUNTA TÓRICA TAMPA		9	* CE04160837	CONJUNTO SAIDA EUROPE D. 90 PARA 10E	
8	* CE04160811	CONJUNTO ENTRADA 63 1050		9	* CE04160838	CONJUNTO SAIDA EUROPE D. 75 PARA 12C	
8	* CE04160812	CONJUNTO ENTRADA 75 1050		9	* CE04160839	CONJUNTO SAIDA EUROPE D. 90 PARA 12C	
8	* CE04160813	CONJUNTO ENTRADA 90 1050		9	* CE04160840	CONJUNTO SAIDA EUROPE D. 110 PARA 14	

*** VEJA A FICHA DE OBSERVAÇÕES**

CODIGO
**FFC1050/63, FFC1050/75, FFC1050/90, FFC1200/75, FFC1200/90,
FFC1400/110, FFC1400/75, FFC1400/90, FFC1600/110, FFC1600/125,
FFC1600/90, FFC1800/110, FFC1800/125, FFC1800/140, FFC1800/90,
FFC2000/110, FFC2000/125, FFC2000/140, FFC2000/160**
DESCRIÇÃO: FILTRO FLORIDA D. 1050-1200-1400-1600-1800-2000

8	* CE04160830	CONJUNTO ENTRADA 75 1200-1400	9	* CE04160841	CONJUNTO SAIDA EUROPE D. 125 PARA 1€
8	* CE04160831	CONJUNTO ENTRADA 90 1200-1400-1600	9	* CE04160842	CONJUNTO SAIDA EUROPE D. 90 PARA 18€
8	* CE04160814	CONJUNTO ENTRADA 110 1400-1600	9	* CE04160843	CONJUNTO SAIDA EUROPE D. 110 PARA 18€
8	* CE04160815	CONJUNTO ENTRADA 125 1600	9	* CE04160844	CONJUNTO SAIDA EUROPE D. 125 PARA 1€
8	* CE04160832	CONJUNTO ENTRADA 90 1800	9	* CE04160845	CONJUNTO SAIDA EUROPE D. 140 PARA 1€
9	* CE04160846	CONJUNTO SAIDA EUROPE D. 160 PARA 2€	26	* 105063R0420	CJTO. COLECTOR D. 63 - 1050
10	CE04260210	FIXAÇÃO MANOMETRO	26	* 105075R0420	CJTO. COLECTOR D. 75 / 1050
11	CE04160809	ARO PESCOÇO 20 PARAFUSOS	26	* 105090R0420	CJTO. COLECTOR D. 90 / 1050
12	CE04020116	JUNTA TÓRICA 255X4	26	* 120075R0420	CJTO. COLECTOR D. 75 / 1200
13	CE04160810	TAMPA ESVAZIAMENTO AREIA	26	* 120090R0420	CJTO. COLECTOR D. 90 / 1200
14	CE04160847	TAMPA FILTRO D.220 NEGRA	26	* 140075R0420	CJTO. COLECTOR D. 75 / 1400
15	CE04260106	JUNTA ARO FIXAÇÃO VALVULA TOP	26	* 140090R0420	CJTO. COLECTOR D. 90 / 1400
16	CE04160849	ARO FIXAÇÃO TAMPA	26	* 1400110R0420	CJTO. COLECTOR D. 110 / 1400
17	CE04160850	PARAFUSOS FIXAÇÃO TAMPA M8	26	* 160090R0420	CJTO. COLECTOR D. 90 / 1600
18	CE04040113	TAMPÃO PURGA E JUNTA	26	* 1600110R0420	CJTO. COLECTOR D. 110 / 1600
19	CE04160808	PURGA ÁGUA 3/4"	26	* 1600125R0420	CJTO. COLECTOR D. 125 / 1600
20	CE04160807	VALVULA BOLA 3/4"	26	* 180090R0420	CJTO. COLECTOR D. 90 / 1800
21	* CE04300916	BRAÇO COLECTOR 1" 225 M "	26	* 1800110R0420	CJTO. COLECTOR D. 110 / 1800
21	* CE04300915	BRAÇO COLECTOR 1" 175 M "	26	* 1800125R0420	CJTO. COLECTOR D. 125 / 1800
21	* CE04290109	BRAÇO COLECTOR 1" 265 M/M "	26	* 1800140R0420	CJTO. COLECTOR D. 140 / 1800
22	* CE04260418	RACCORD UNIÃO 1"	26	* 2000110R0420	CJTO. COLECTOR D. 110 / 2000
23	* CE04260419	BRAÇO COLECTOR 1" 100M "	26	* 2000125R0420	CJTO. COLECTOR D. 125 / 2000
24	* CE04260401	CJTO. BRAÇO COLECTOR D.950-1050	26	* 2000140R0420	CJTO. COLECTOR D. 140 / 2000
24	* CE04260402	CJTO. BRAÇO COLECTOR D.1200	26	* 2000160R0420	CJTO. COLECTOR D. 160 / 2000
24	* CE04260403	CJTO. BRAÇO COLECTOR D.1400	27	* 180090R0422	SUPORTE COLECTOR D.90 - 1800
24	* CE04260404	CJTO. BRAÇO COLECTOR D.1600	27	* 1800110R0422	SUPORTE COLECTOR D.110 - 1800
24	* CE04260405	CJTO. BRAÇO COLECTOR D.1800	27	* 1800125R0422	SUPORTE COLECTOR D.125 - 1800
24	* CE04260406	CJTO. BRAÇO COLECTOR D.2000	27	* 1800140R0422	SUPORTE COLECTOR D.140 - 1800
25	* 105063R0430	DIFUSOR D.63 / 1050	27	* 2000110R0422	SUPORTE COLECTOR D.110 - 2000
25	* 105075R0430	DIFUSOR D.75 / 1050	27	* 2000125R0422	SUPORTE COLECTOR D.125 - 2000
25	* 105090R0430	DIFUSOR D.90 / 1050	27	* 2000140R0422	SUPORTE COLECTOR D.140 - 2000
25	* 120075R0430	DIFUSOR D.75 / 1200	27	* 2000160R0422	SUPORTE COLECTOR D.160 - 2000
25	* 120090R0430	DIFUSOR D.90 / 1200	28	* 180090R0423	SUPORTE DIFUSOR D.90 - 1800
25	* 140075R0430	DIFUSOR D.75 / 1400	28	* 1800110R0423	SUPORTE DIFUSOR D.110 - 1800
25	* 140090R0430	DIFUSOR D.90 / 1400	28	* 1800125R0423	SUPORTE DIFUSOR D.125 - 1800
25	* 1400110R0430	DIFUSOR D.110 / 1400	28	* 1800140R0423	SUPORTE DIFUSOR D.140 - 1800
25	* 160090R0430	DIFUSOR D.90 / 1600	28	* 2000110R0423	SUPORTE DIFUSOR D.110 - 2000
25	* 1600110R0430	DIFUSOR D.110 / 1600	28	* 2000125R0423	SUPORTE DIFUSOR D.125 - 2000
25	* 1600125R0430	DIFUSOR D.125 / 1600	28	* 2000140R0423	SUPORTE DIFUSOR D.140 - 2000
25	* 180090R0430	DIFUSOR D.90 / 1800	28	* 2000160R0423	SUPORTE DIFUSOR D.160 - 2000
25	* 1800110R0430	DIFUSOR D.110 / 1800	29	* 00687R0101	PÉ FILTRO D 1050
25	* 1800125R0430	DIFUSOR D.125 / 1800	29	* 00546R0101	PÉ FILTRO D 1200
25	* 1800140R0430	DIFUSOR D.140 / 1800	29	* 00689R0101	PÉ FILTRO D 1400
25	* 2000110R0430	DIFUSOR D.110 / 2000	29	* 00690R0101	PÉ FILTRO D 1600
25	* 2000125R0430	DIFUSOR D.125 / 2000	29	* 00691R0101	PÉ FILTRO D 1800
25	* 2000140R0430	DIFUSOR D.140 / 2000	29	* 00692R0101	PÉ FILTRO 2000
25	* 2000160R0430	DIFUSOR D.160 / 2000			

CODIGO **FFC1050/63, FFC1050/75, FFC1050/90, FFC1200/75, FFC1200/90, FFC1400/110, FFC1400/75, FFC1400/90, FFC1600/110, FFC1600/125, FFC1600/90, FFC1800/110, FFC1800/125, FFC1800/140, FFC1800/90, FFC2000/110, FFC2000/125, FFC2000/140, FFC2000/160**

DESCRICAÇÃO: FILTRO FLORIDA D. 1050-1200-1400-1600-1800-2000

OBSERVAÇÕES

POS	CODIGO	OBSERVAÇÕES
8	*CE04160811	PARA: FFC1050/63
8	*CE04160812	PARA: FFC1050/75
8	*CE04160813	PARA: FFC1050/90
8	*CE04160830	PARA: FFC1200/75, FFC1400/75
8	*CE04160831	PARA: FFC1200/90, FFC1400/90, FFC1600/90
8	*CE04160814	PARA: FFC1400/110, FFC1600/110
8	*CE04160815	PARA: FFC1600/125
8	*CE04160832	PARA: FFC1800/90
8	*CE04160833	PARA: FFC1800/110, FFC2000/110
8	*CE04160834	PARA: FFC1800/125, FFC2000/125
8	*CE04160816	PARA: FFC1800/140, FFC2000/140
8	*CE04160817	PARA: FFC2000/160
9	*CE04160835	PARA: FFC1050/63
9	*CE04160836	PARA: FFC1050/75
9	*CE04160837	PARA: FFC1050/90
9	*CE04160838	PARA: FFC1200/75, FFC1400/75
9	*CE04160839	PARA: FFC1200/90, FFC1400/90, FFC1600/90
9	*CE04160840	PARA: FFC1400/110, FFC1600/110
9	*CE04160841	PARA: FFC1600/125
9	*CE04160842	PARA: FFC1800/90
9	*CE04160843	PARA: FFC1800/110, FFC2000/110
9	*CE04160844	PARA: FFC1800/125, FFC2000/125
9	*CE04160845	PARA: FFC1800/140, FFC2000/140
9	*CE04160846	PARA: FFC2000/160
21	*CE04300916	PARA: FFC1050/63 [6UT], FFC1050/75 [6UT], FFC1050/90 [6UT], FFC1400/110 [6UT], FFC1400/75 [6UT], FFC1400/90 [6UT], FFC1800/110 [6UT], FFC1800/125 [6UT], FFC1800/140 [6UT], FFC1800/90 [6UT], FFC2000/110 [9UT], FFC2000/125 [9UT], FFC2000/140 [9UT], FFC2000/160 [9UT]
21	*CE04300915	PARA: FFC1800/110 [7UT], FFC1800/125 [7UT], FFC1800/140 [7UT], FFC1800/90 [7UT]
21	*CE04290109	PARA: FFC1200/75 [6UT], FFC1200/90 [6UT], FFC1600/110 [6UT], FFC1600/125 [6UT], FFC1600/90 [6UT], FFC2000/110 [4UT], FFC2000/125 [4UT], FFC2000/140 [4UT], FFC2000/160 [4UT]
22	*CE04260418	PARA: FFC1050/63 [3UT], FFC1050/75 [3UT], FFC1050/90 [3UT], FFC1200/75 [3UT], FFC1200/90 [3UT], FFC1400/110 [6UT], FFC1400/75 [6UT], FFC1400/90 [6UT], FFC1600/110 [6UT], FFC1600/125 [6UT], FFC1600/90 [6UT], FFC1800/110 [14UT], FFC1800/125 [14UT], FFC1800/140 [14UT], FFC1800/90 [14UT], FFC2000/110 [20UT], FFC2000/125 [20UT], FFC2000/140 [20UT], FFC2000/160 [20UT]
23	*CE04260419	PARA: FFC1050/63 [3UT], FFC1050/75 [3UT], FFC1050/90 [3UT], FFC1200/75 [3UT], FFC1200/90 [3UT], FFC1400/110 [6UT], FFC1400/75 [6UT], FFC1400/90 [6UT], FFC1600/110 [6UT], FFC1600/125 [6UT], FFC1600/90 [6UT], FFC1800/110 [14UT], FFC1800/125 [14UT], FFC1800/140 [14UT], FFC1800/90 [14UT], FFC2000/110 [20UT], FFC2000/125 [20UT], FFC2000/140 [20UT], FFC2000/160 [20UT]
24	*CE04260401	PARA: FFC1050/63, FFC1050/75, FFC1050/90
24	*CE04260402	PARA: FFC1200/75, FFC1200/90
24	*CE04260403	PARA: FFC1400/110, FFC1400/75, FFC1400/90
24	*CE04260404	PARA: FFC1600/110, FFC1600/125, FFC1600/90
24	*CE04260405	PARA: FFC1800/110, FFC1800/125, FFC1800/140, FFC1800/90
24	*CE04260406	PARA: FFC2000/110, FFC2000/125, FFC2000/140, FFC2000/160
25	*105063R0430	PARA: FFC1050/63

CODIGO **FFC1050/63, FFC1050/75, FFC1050/90, FFC1200/75, FFC1200/90,
FFC1400/110, FFC1400/75, FFC1400/90, FFC1600/110, FFC1600/125,
FFC1600/90, FFC1800/110, FFC1800/125, FFC1800/140, FFC1800/90,
FFC2000/110, FFC2000/125, FFC2000/140, FFC2000/160**

DESCRICAÇÃO: FILTRO FLORIDA D. 1050-1200-1400-1600-1800-2000

25	* 105075R0430	PARA: FFC1050/75
25	* 105090R0430	PARA: FFC1050/90
25	* 120075R0430	PARA: FFC1200/75
25	* 120090R0430	PARA: FFC1200/90
25	* 140075R0430	PARA: FFC1400/75
25	* 140090R0430	PARA: FFC1400/90
25	* 1400110R0430	PARA: FFC1400/110
25	* 160090R0430	PARA: FFC1600/90
25	* 1600110R0430	PARA: FFC1600/110
25	* 1600125R0430	PARA: FFC1600/125
25	* 180090R0430	PARA: FFC1800/90
25	* 1800110R0430	PARA: FFC1800/110
25	* 1800125R0430	PARA: FFC1800/125
25	* 1800140R0430	PARA: FFC1800/140
25	* 2000110R0430	PARA: FFC2000/110
25	* 2000125R0430	PARA: FFC2000/125
25	* 2000140R0430	PARA: FFC2000/140
25	* 2000160R0430	PARA: FFC2000/160
26	* 105063R0420	PARA: FFC1050/63
26	* 105075R0420	PARA: FFC1050/75
26	* 105090R0420	PARA: FFC1050/90
26	* 120075R0420	PARA: FFC1200/75
26	* 120090R0420	PARA: FFC1200/90
26	* 140075R0420	PARA: FFC1400/75
26	* 140090R0420	PARA: FFC1400/90
26	* 1400110R0420	PARA: FFC1400/110
26	* 160090R0420	PARA: FFC1600/90
26	* 1600110R0420	PARA: FFC1600/110
26	* 1600125R0420	PARA: FFC1600/125
26	* 180090R0420	PARA: FFC1800/90
26	* 1800110R0420	PARA: FFC1800/110
26	* 1800125R0420	PARA: FFC1800/125
26	* 1800140R0420	PARA: FFC1800/140
26	* 2000110R0420	PARA: FFC2000/110
26	* 2000125R0420	PARA: FFC2000/125
26	* 2000140R0420	PARA: FFC2000/140
26	* 2000160R0420	PARA: FFC2000/160
27	* 180090R0422	PARA: FFC1800/90
27	* 1800110R0422	PARA: FFC1800/110
27	* 1800125R0422	PARA: FFC1800/125
27	* 1800140R0422	PARA: FFC1800/140
27	* 2000110R0422	PARA: FFC2000/110
27	* 2000125R0422	PARA: FFC2000/125
27	* 2000140R0422	PARA: FFC2000/140

CODIGO **FFC1050/63, FFC1050/75, FFC1050/90, FFC1200/75, FFC1200/90,
 FFC1400/110, FFC1400/75, FFC1400/90, FFC1600/110, FFC1600/125,
 FFC1600/90, FFC1800/110, FFC1800/125, FFC1800/140, FFC1800/90,
 FFC2000/110, FFC2000/125, FFC2000/140, FFC2000/160**

DESCRIÇÃO: FILTRO FLORIDA D. 1050-1200-1400-1600-1800-2000

27	* 2000160R0422	PARA: FFC2000/160
28	* 180090R0423	PARA: FFC1800/90
28	* 1800110R0423	PARA: FFC1800/110
28	* 1800125R0423	PARA: FFC1800/125
28	* 1800140R0423	PARA: FFC1800/140
28	* 2000110R0423	PARA: FFC2000/110
28	* 2000125R0423	PARA: FFC2000/125
28	* 2000140R0423	PARA: FFC2000/140
28	* 2000160R0423	PARA: FFC2000/160
29	* 00687R0101	PARA: FFC1050/63, FFC1050/75, FFC1050/90
29	* 00546R0101	PARA: FFC1200/75, FFC1200/90
29	* 00689R0101	PARA: FFC1400/110, FFC1400/75, FFC1400/90
29	* 00690R0101	PARA: FFC1600/110, FFC1600/125, FFC1600/90
29	* 00691R0101	PARA: FFC1800/110, FFC1800/125, FFC1800/140, FFC1800/90
29	* 00692R0101	PARA: FFC2000/110, FFC2000/125, FFC2000/140, FFC2000/160