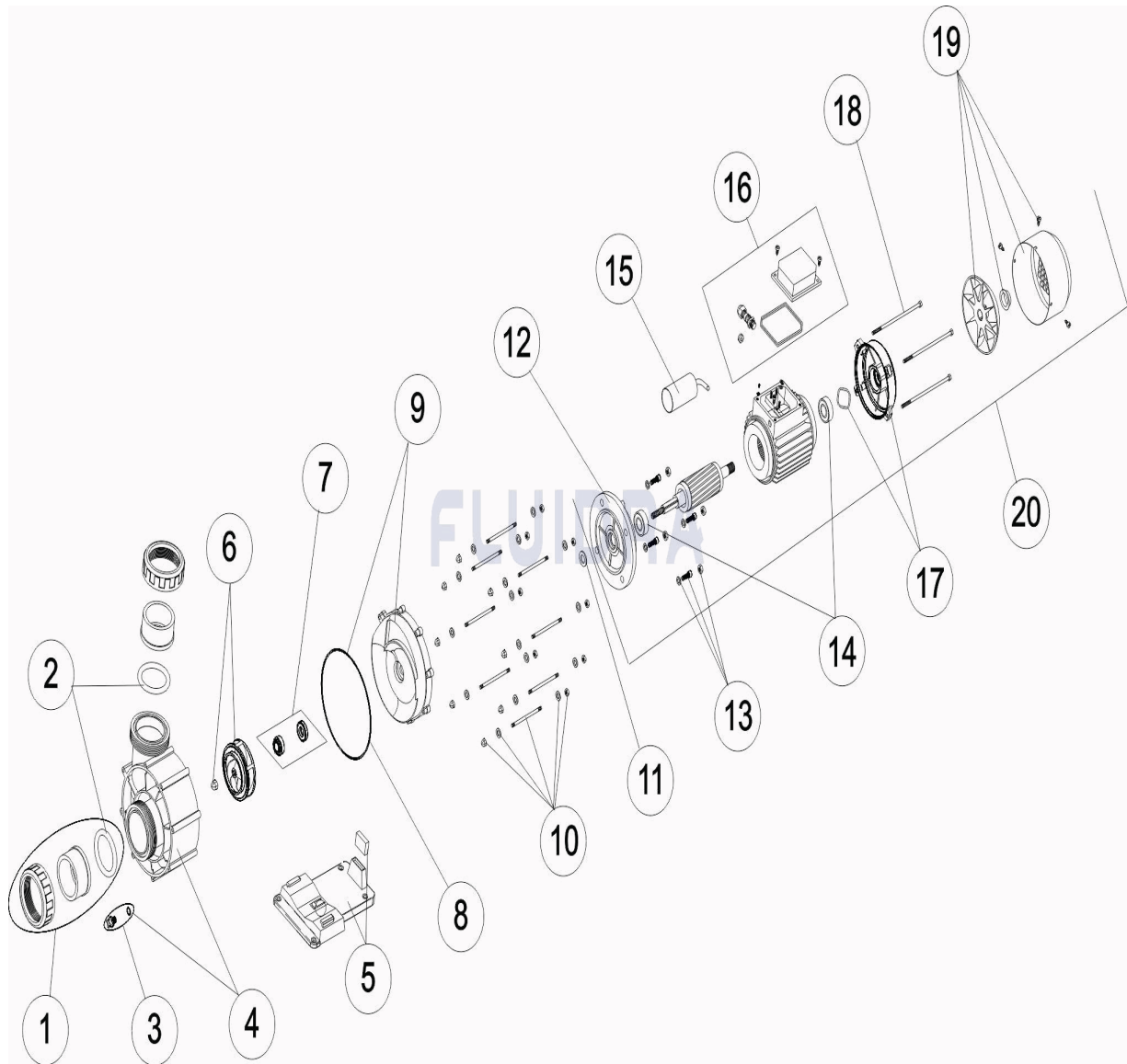


CODIGO **NBP300M, NBP300T, NBP400T, NBP550T**

 DESCRIPCION: **BOMBA CONTRACORRIENTE BARCELONA**

**ESPAÑOL**

POS	CODIGO	DESCRIPCION	CANTIDAD	POS	CODIGO	DESCRIPCION	CANTIDAD
1	CE05030008	CJTO. ENLACES D. 75		12	CE05030021	BRIDA MOTOR	
2	CE05030009	JUNTA TÓRICA MANGUITO Ø75		13	* CE05010250	TORNILLOS FIJACION MOTOR 2-3 CV.	
3	CE04121107	TAPON ¼ VALVULA		13	* CE05030022	TORNILLOS FIJACION MOTOR 4 - 5,5 CV	
4	CE05030010	CUERPO BOMBA		14	CE05010247	RODAMIENTO 2-3 CV	
5	* CE05030011	PIE BOMBA 3 CV.		15	* CE05010184	CONDENSADOR 35MF 1,5 HP	
5	* CE05030012	PIE BOMBA 4 - 5,5 CV.		16	* CE05010261	CAJA CONEXIONES COMPLETA 1,5-3 CV. II	
6	* CE05030013	TURBINA 3 CV		16	* CE05010190	CAJA CONEXIONES COMPLETA 1,5-3 CV. III	
6	* CE05030014	TURBINA 4 CV		17	CE05030023	TAPA TRASERA MOTOR	
6	* CE05030015	TURBINA 5,5 CV		18	CE05010726	ESPARRAGO MOTOR 3 CV	
7	CE05030016	SELLO MECÁNICO D. 20		19	CE05010259	TAPA VENTILADOR + VENTILADOR 2-3 CV	
8	CE05030017	JUNTA TAPA CUERPO		20	* MT999170	MOTOR COMPLETO 3 CV II	
9	CE05030018	TAPA CUERPO BOMBA		20	* MT999175	MOTOR COMPLETO 3 CV III	
10	CE05030019	TORNILLOS CUERPO BOMBA		20	* MT106045	MOTOR COMPLETO 4 CV III	

\* NOTA OBSERVACIONES

CODIGO **NBP300M, NBP300T, NBP400T, NBP550T**DESCRIPCION: **BOMBA CONTRACORRIENTE BARCELONA**

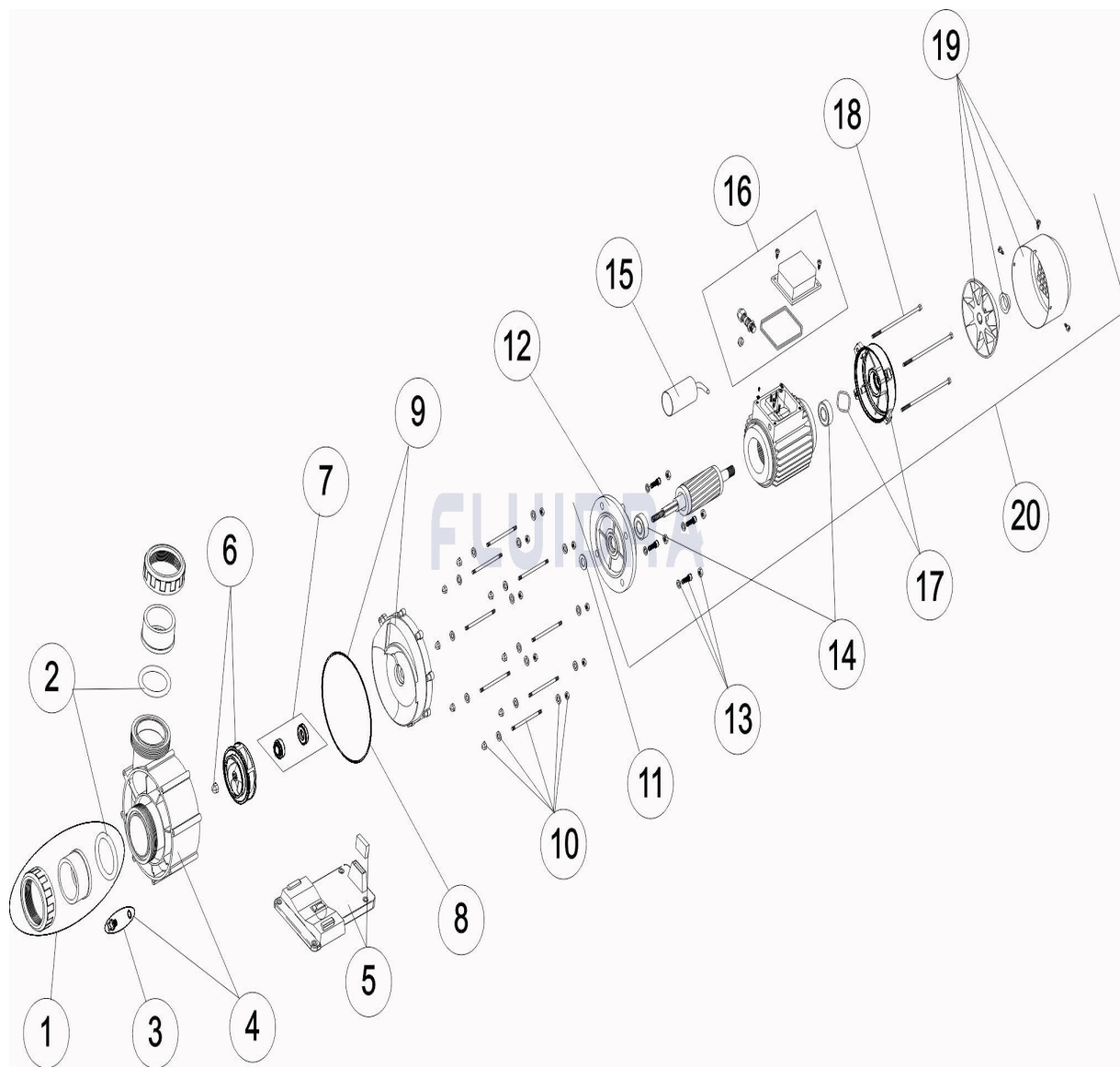
11	* CE05010548	ARANDELA ROMPE AGUAS 2-3 CV	20	* MT106055	MOTOR COMPLETO 5,5 CV III
11	* CE05030020	JUNTA V VA-30 (4 - 5,5 CV)			

CODIGO **NBP300M, NBP300T, NBP400T, NBP550T**DESCRIPCION: **BOMBA CONTRACORRIENTE BARCELONA**

## OBSERVACIONES

POS	CODIGO	OBSERVACIONES
5	*CE05030011	PARA: NBP300M, NBP300T
5	*CE05030012	PARA: NBP400T, NBP550T
6	*CE05030013	PARA: NBP300M, NBP300T
6	*CE05030014	PARA: NBP400T
6	*CE05030015	PARA: NBP550T
11	*CE05010548	PARA: NBP300M, NBP300T
11	*CE05030020	PARA: NBP400T, NBP550T
13	*CE05010250	PARA: NBP300M, NBP300T
13	*CE05030022	PARA: NBP400T, NBP550T
15	*CE05010184	PARA: NBP300M
16	*CE05010261	PARA: NBP300M
16	*CE05010190	PARA: NBP300T, NBP400T, NBP550T
20	*MT999170	PARA: NBP300M
20	*MT999175	PARA: NBP300T
20	*MT106045	PARA: NBP400T
20	*MT106055	PARA: NBP550T

CODE **NBP300M, NBP300T, NBP400T, NBP550T**

 DESCRIPTION: **POMPE CONTRE-COURANT BARCELONA**

**FRANCAIS**

POS	CODE	DESCRIPTION	QUANTITE	POS	CODE	DESCRIPTION	QUANTITE
1	CE05030008	ENSEMBLE RACCORD D. 75		12	CE05030021	FLASQUE ACCOUP. MOTEUR	
2	CE05030009	JOINT TORIQUE MANCHON D. 75		13	* CE05010250	VIS FIXATION MOTEUR 2-3 CV.	
3	CE04121107	BOUCHON 1/4' DE VANNE		13	* CE05030022	VIS FIXATION MOTEUR 4 - 5,5 CV	
4	CE05030010	CORPS POMPE		14	CE05010247	ROULEMENT 2-3 CV	
5	* CE05030011	SOCLE POMPE 3 HP		15	* CE05010184	CONDENSATEUR 35MF 1,5 HP	
5	* CE05030012	SOCLE POMPE 4 - 4,5 HP		16	* CE05010261	BOTILLER DE CONNECTIONS 1,5-3 CV. II	
6	* CE05030013	TURBINE 3 CV		16	* CE05010190	BOTILLER DE CONNECTIONS 1,5-3 CV. III	
6	* CE05030014	TURBINE 4 HP		17	CE05030023	COUVERCLE ARRIÈRE MOTEUR	
6	* CE05030015	TURBINE 5,5 HP		18	CE05010726	GOUJON MOTEUR 3 CV	
7	CE05030016	GARNITURE MECANIQUE		19	CE05010259	CAPOT VENTILATEUR + VENTILATEUR 2-3 I	
8	CE05030017	JOINT DE COUVERCLE CORPS		20	* MT999170	MOTEUR COMPLET 3 CV III	
9	CE05030018	COUVERCLE CORPS DE POMPE		20	* MT999175	MOTEUR COMPLET 3 CV III	
10	CE05030019	VIS CORPS POMPE		20	* MT106045	MOTEUR COMPLET 4 CV TRI	

\* VOIR FICHE D'OBSERVATIONS

CODE **NBP300M, NBP300T, NBP400T, NBP550T**DESCRIPTION: **POMPE CONTRE-COURANT BARCELONA**

11	* CE05010548	RONDELLE BRISE EAU 2-3 CV.	20	* MT106055	MOTEUR COMPLET 5,5 CV TRI
11	* CE05030020	JOINT V VA-30 (4 - 5,5 CV)			

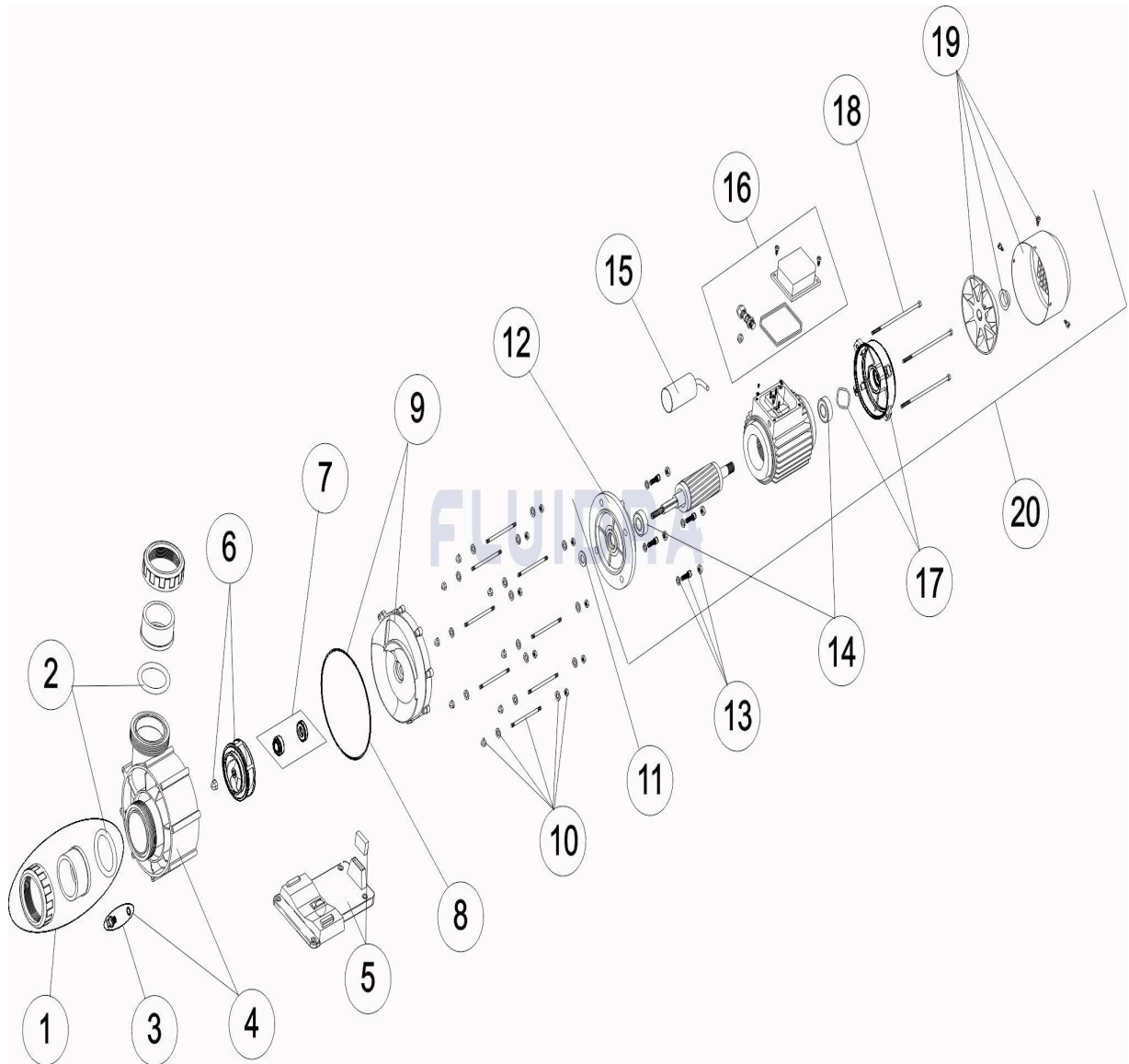
CODE **NBP300M, NBP300T, NBP400T, NBP550T**DESCRIPTION: **POMPE CONTRE-COURANT BARCELONA**

## OBSERVATIONS

POS	CODE	OBSERVATIONS
5	*CE05030011	POUR: NBP300M, NBP300T
5	*CE05030012	POUR: NBP400T, NBP550T
6	*CE05030013	POUR: NBP300M, NBP300T
6	*CE05030014	POUR: NBP400T
6	*CE05030015	POUR: NBP550T
11	*CE05010548	POUR: NBP300M, NBP300T
11	*CE05030020	POUR: NBP400T, NBP550T
13	*CE05010250	POUR: NBP300M, NBP300T
13	*CE05030022	POUR: NBP400T, NBP550T
15	*CE05010184	POUR: NBP300M
16	*CE05010261	POUR: NBP300M
16	*CE05010190	POUR: NBP300T, NBP400T, NBP550T
20	*MT999170	POUR: NBP300M
20	*MT999175	POUR: NBP300T
20	*MT106045	POUR: NBP400T
20	*MT106055	POUR: NBP550T

CODE **NBP300M, NBP300T, NBP400T, NBP550T**

DESCRIPTION: **COUNTER-CURRENT PUMP BARCELONA**



**ENGLISH**

POS	CODE	DESCRIPTION	QUANTITY	POS	CODE	DESCRIPTION	QUANTITY
1	CE05030008	UNION KIT D. 75		12	CE05030021	MOTOR CLAMP	
2	CE05030009	HOSE SLEEVE O-RING D. 75		13	* CE05010250	2-3 CV. MOTOR FIXING SCREWS	
3	CE04121107	PLUG 1/4"		13	* CE05030022	4 - 5,5 CV MOTOR FIXING SCREWS	
4	CE05030010	PUMP HOUSING		14	CE05010247	BEARING 2-3 CV	
5	* CE05030011	PUMP BASE 3 HP		15	* CE05010184	CONDENSER 35MF 1,5 HP	
5	* CE05030012	PUMP BASE 4 - 4,5 HP		16	* CE05010261	TERMINAL BOX 1,5-3 CV. II	
6	* CE05030013	IMPELLER 3 CV		16	* CE05010190	TERMINAL BOX 1,5-3 CV. III	
6	* CE05030014	IMPELLER 4 HP		17	CE05030023	REAR MOTOR COVER	
6	* CE05030015	IMPELLER 5,5 HP		18	CE05010726	3 CV MOTOR STUD	
7	CE05030016	MACHANICAL SEAL		19	CE05010259	FAN COVER + FAN 2-3 CV	
8	CE05030017	BODY COVER JOINT		20	* MT999170	3 CV II COMPLETE MOTOR	
9	CE05030018	BLACK PLATE		20	* MT999175	3 CV III COMPLETE MOTOR	
10	CE05030019	SCREWS FOR PUMP BODY		20	* MT106045	4 CV III COMPLETE MOTOR	

\* SEE OBSERVATIONS SHEET

CODE                    **NBP300M, NBP300T, NBP400T, NBP550T**DESCRIPTION: **COUNTER-CURRENT PUMP BARCELONA**

11	* CE05010548	BREAKWATER WASHER 2-3 CV.	20	* MT106055	5,5 CV III COMPLETE MOTOR
11	* CE05030020	GASKET V VA-30 (4 - 5,5 CV)			

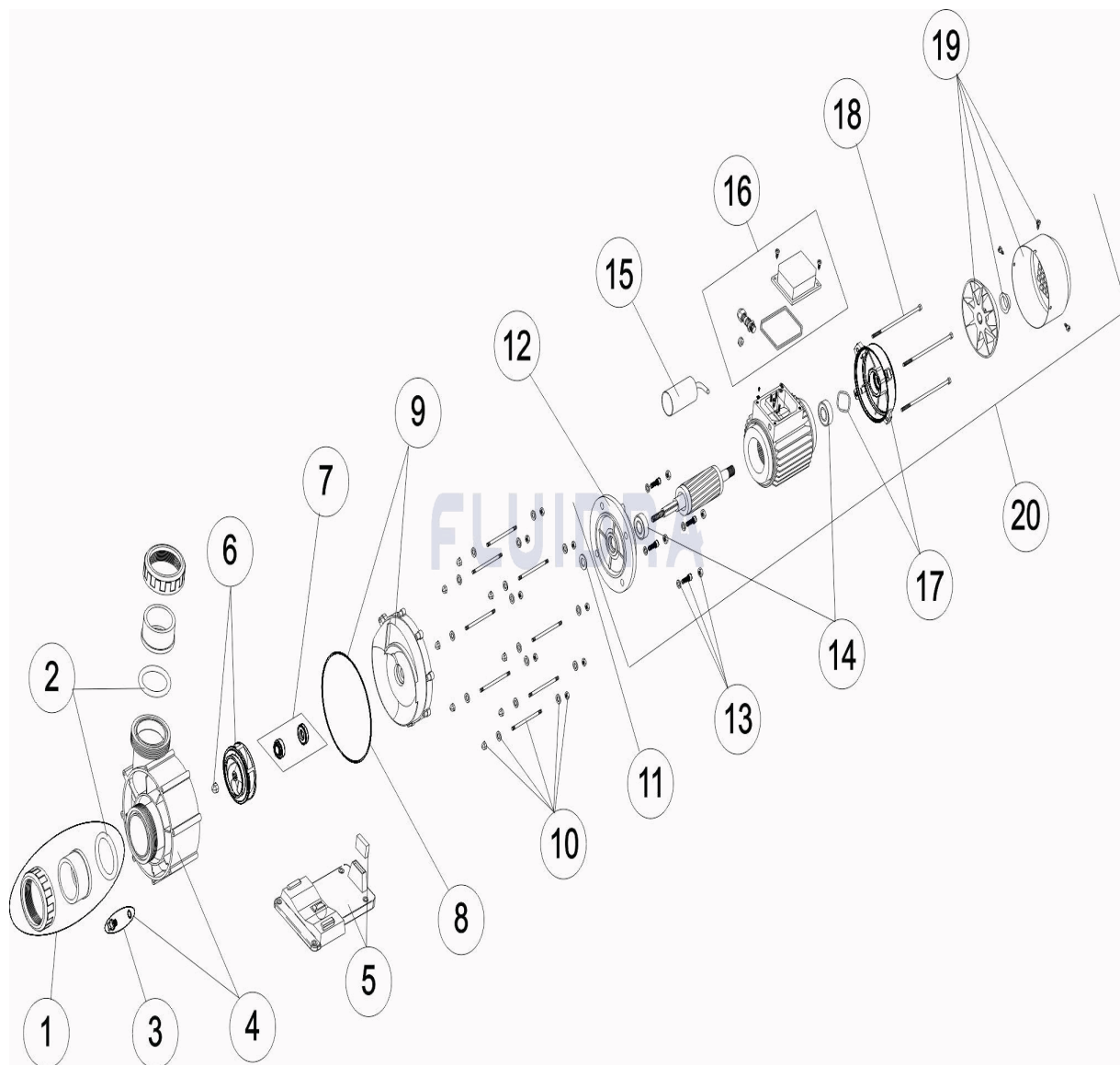


CODE **NBP300M, NBP300T, NBP400T, NBP550T**DESCRIPTION: **COUNTER-CURRENT PUMP BARCELONA**

## OBSERVATIONS

POS	CODE	OBSERVATIONS
5	*CE05030011	FOR: NBP300M, NBP300T
5	*CE05030012	FOR: NBP400T, NBP550T
6	*CE05030013	FOR: NBP300M, NBP300T
6	*CE05030014	FOR: NBP400T
6	*CE05030015	FOR: NBP550T
11	*CE05010548	FOR: NBP300M, NBP300T
11	*CE05030020	FOR: NBP400T, NBP550T
13	*CE05010250	FOR: NBP300M, NBP300T
13	*CE05030022	FOR: NBP400T, NBP550T
15	*CE05010184	FOR: NBP300M
16	*CE05010261	FOR: NBP300M
16	*CE05010190	FOR: NBP300T, NBP400T, NBP550T
20	*MT999170	FOR: NBP300M
20	*MT999175	FOR: NBP300T
20	*MT106045	FOR: NBP400T
20	*MT106055	FOR: NBP550T

CODICE **NBP300M, NBP300T, NBP400T, NBP550T**

 DESCRIZIONE: **POMPA CONTROCORRENTE BARCELONA**

**ITALIANO**

POS	CODICE	DESCRIZIONE	QUANTITA'	POS	CODICE	DESCRIZIONE	QUANTITA'
1	CE05030008	KIT ATTACO SEIDA D. 75		12	CE05030021	FLANGIA MOTORE	
2	CE05030009	O-RING MANICOTTO D. 75		13	* CE05010250	VITI FISSAGGIO MOTORE 2-3 CV.	
3	CE04121107	COPERCHIO 1/4' VALVOLA		13	* CE05030022	VITI FISSAGGIO MOTORE 4 - 5,5 CV	
4	CE05030010	CORPO POMPA		14	CE05010247	CUSCINETTO 2-3 CV	
5	* CE05030011	PIEDE POMPA 3 HP		15	* CE05010184	CONDENSATORE 35MF 1,5 HP	
5	* CE05030012	PIEDE POMPA 4 - 4,5 HP		16	* CE05010261	COPERCHIO MORSETTIERA 1,5-3 CV. II	
6	* CE05030013	TURBINA 3 CV		16	* CE05010190	COPERCHIO MORSETTIERA 1,5-3 CV. III	
6	* CE05030014	GIRANTE 4 HP		17	CE05030023	COPERCHIO POSTERIORE MOTORE	
6	* CE05030015	GIRANTE 5,5 HP		18	CE05010726	BARRA FILETTATA MOTORE 3 CV	
7	CE05030016	TENUTA MECCANICA		19	CE05010259	COPERCHIO VENTILATORE + VENTILATOR	
8	CE05030017	GUARNIZIONE COPERCHIO CORPO		20	* MT999170	MOTORE COMPLETO 3 CV II	
9	CE05030018	COPERCHIO CORPO POMPA		20	* MT999175	MOTORE COMPLETO 3 CV III	
10	CE05030019	VITI DEL CORPO POMPA		20	* MT106045	MOTORE COMPLETO 4 CV III	

\* SI FACCIA RIFERIMENTO AL FOGLIO DELLE OSSERVAZIONI

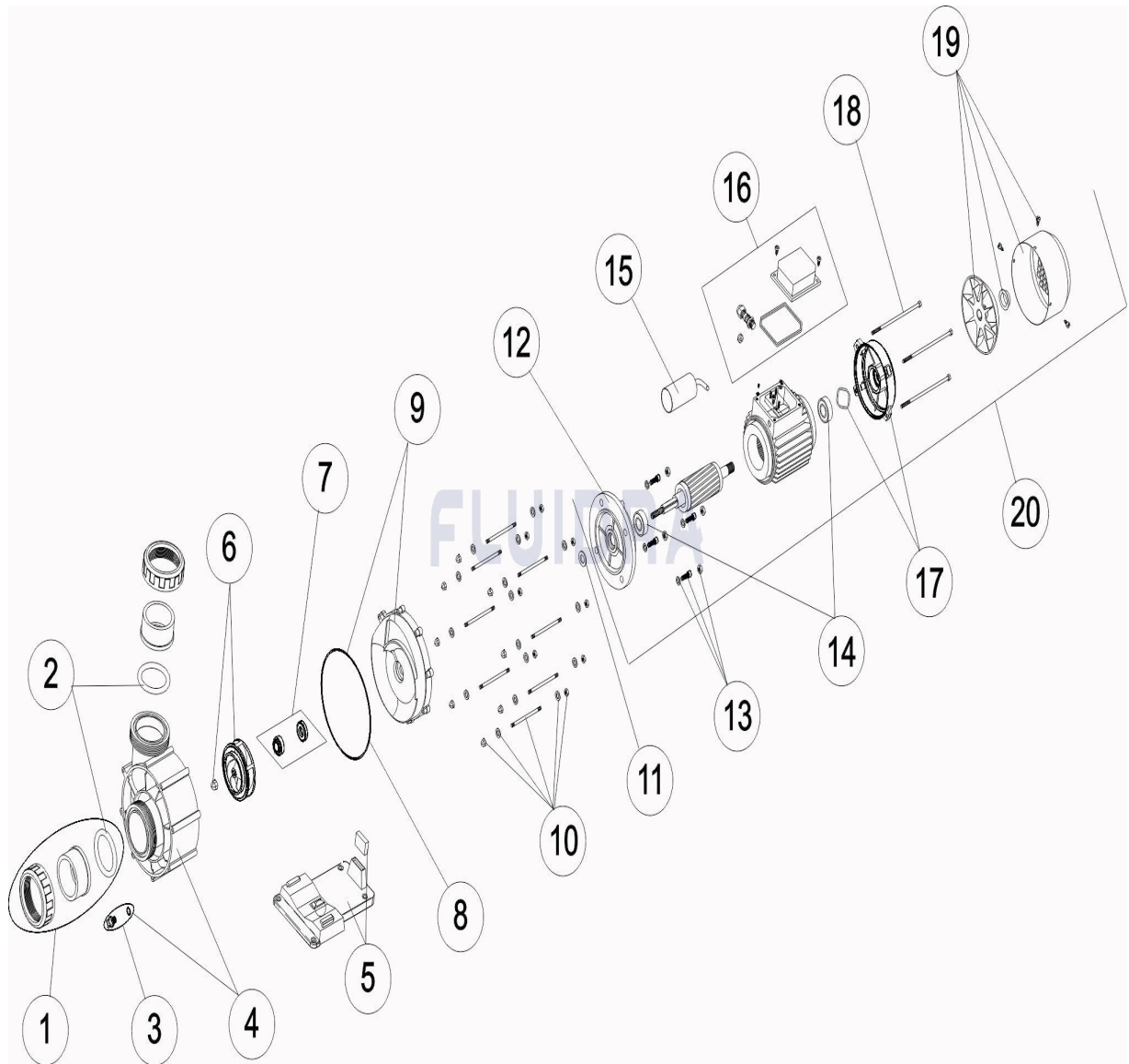
CODICE **NBP300M, NBP300T, NBP400T, NBP550T**DESCRIZIONE: **POMPA CONTROCORRENTE BARCELONA**

11	* CE05010548	RONDELLA 2-3 CV.	20	* MT106055	MOTORE COMPLETO 5,5 CV III
11	* CE05030020	O-RING V VA-30 (4 - 5,5 CV)			

CODICE **NBP300M, NBP300T, NBP400T, NBP550T**DESCRIZIONE: **POMPA CONTROCORRENTE BARCELONA****OSSERVAZIONI**

POS	CODICE	OSSERVAZIONI
5	*CE05030011	PER: NBP300M, NBP300T
5	*CE05030012	PER: NBP400T, NBP550T
6	*CE05030013	PER: NBP300M, NBP300T
6	*CE05030014	PER: NBP400T
6	*CE05030015	PER: NBP550T
11	*CE05010548	PER: NBP300M, NBP300T
11	*CE05030020	PER: NBP400T, NBP550T
13	*CE05010250	PER: NBP300M, NBP300T
13	*CE05030022	PER: NBP400T, NBP550T
15	*CE05010184	PER: NBP300M
16	*CE05010261	PER: NBP300M
16	*CE05010190	PER: NBP300T, NBP400T, NBP550T
20	*MT999170	PER: NBP300M
20	*MT999175	PER: NBP300T
20	*MT106045	PER: NBP400T
20	*MT106055	PER: NBP550T

CODE **NBP300M, NBP300T, NBP400T, NBP550T**

 BESCHREIBUNG: **GEGENSTROMPUMPE BARCELONA**

**DEUTSCH**

POS	CODE	BESCHREIBUNG	MENGE	POS	CODE	BESCHREIBUNG	MENGE
1	CE05030008	SET ANSCHLÜSSE D. 75		12	CE05030021	MOTORFLANSCH	
2	CE05030009	O-RING NIPPEL Ø75		13	* CE05010250	FIXIERSCHRAUBEN MOTOR 2 - 3 CV	
3	CE04121107	STOPFEN 1/4' VENTIL		13	* CE05030022	FIXIERSCHRAUBEN MOTOR 4 - 5,5 CV	
4	CE05030010	PUMPENGEHÄUSE		14	CE05010247	WÄLZLAGER 2 - 3 CV	
5	* CE05030011	PUMPENFUSS 3 CV		15	* CE05010184	KONDENSATOR 35 MF 1,5 HP	
5	* CE05030012	PUMPENFUSS 4 - 5,5 CV		16	* CE05010261	ANSCHLUSSGEHÄUSE KOMPLETT 1,5 - 3 C	
6	* CE05030013	TURBINE 3 CV		16	* CE05010190	ANSCHLUSSGEHÄUSE KOMPLETT 1,5 - 3 C	
6	* CE05030014	TURBINE 4 CV		17	CE05030023	MOTORDECKEL HINTEN	
6	* CE05030015	TURBINE 5,5 CV		18	CE05010726	BOLZEN MOTOR 3 CV	
7	CE05030016	GLEITRINGDICHTUNG D. 20		19	CE05010259	VENTILATORDECKEL MIT VENTILATOR 2 - 3	
8	CE05030017	DICHTUNG ABDECKUNG GEHÄUSE		20	* MT999170	MOTOR KOMPLETT 3 CV II	
9	CE05030018	ABDECKUNG PUMPENGEHÄUSE		20	* MT999175	MOTOR KOMPLETT 3 CV III	
10	CE05030019	SCHRAUBEN PUMPENGEHÄUSE		20	* MT106045	MOTOR KOMPLETT 4 CV III	

\* SIEHE ANMERKUNGSBLATT

CODE **NBP300M, NBP300T, NBP400T, NBP550T**

BESCHREIBUNG: **GEGENSTROMPUMPE BARCELONA**

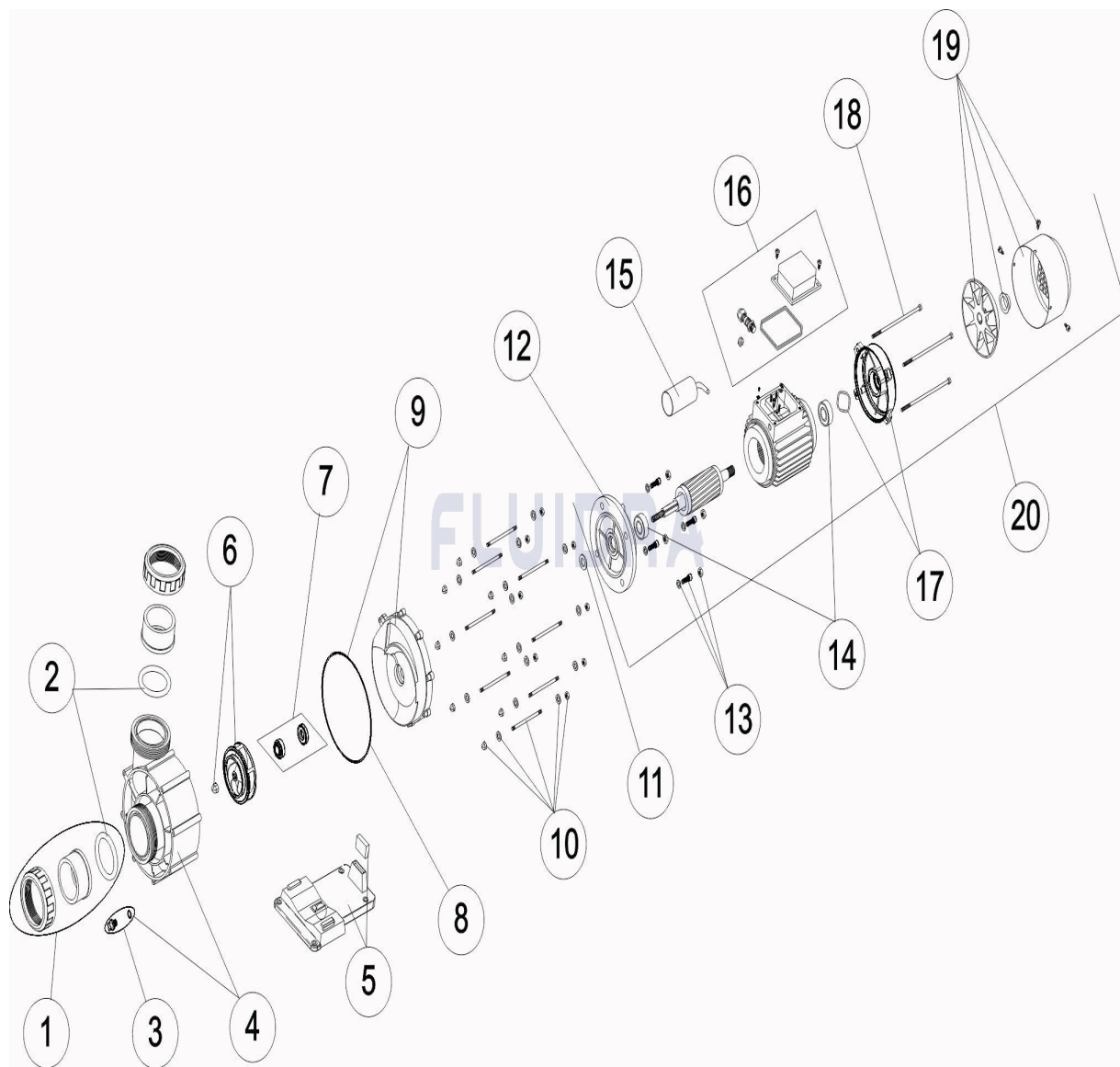
11	* CE05010548	UNTERLEGSCHIEBE WASSERBRECHER 2	20	* MT106055	MOTOR KOMPLETT 5,5 CV III
11	* CE05030020	DICHTUNGSRING VA - 30 (4 - 5,5 CV)			

CODE **NBP300M, NBP300T, NBP400T, NBP550T**BESCHREIBUNG: **GEGENSTROMPUMPE BARCELONA**

## HINWEISE

POS	CODE	HINWEISE
5	*CE05030011	FÜR: NBP300M, NBP300T
5	*CE05030012	FÜR: NBP400T, NBP550T
6	*CE05030013	FÜR: NBP300M, NBP300T
6	*CE05030014	FÜR: NBP400T
6	*CE05030015	FÜR: NBP550T
11	*CE05010548	FÜR: NBP300M, NBP300T
11	*CE05030020	FÜR: NBP400T, NBP550T
13	*CE05010250	FÜR: NBP300M, NBP300T
13	*CE05030022	FÜR: NBP400T, NBP550T
15	*CE05010184	FÜR: NBP300M
16	*CE05010261	FÜR: NBP300M
16	*CE05010190	FÜR: NBP300T, NBP400T, NBP550T
20	*MT999170	FÜR: NBP300M
20	*MT999175	FÜR: NBP300T
20	*MT106045	FÜR: NBP400T
20	*MT106055	FÜR: NBP550T

CODIGO **NBP300M, NBP300T, NBP400T, NBP550T**

 DESCRIÇÃO: **BOMBA CONTRA-CORRENTE BARCELONA**

**PORTUGUES**

POS	CODIGO	DESCRIÇÃO	JANTIDADE	POS	CODIGO	DESCRIÇÃO	JANTIDADE
1	CE05030008	CONJUNTO UNIÃO LIGAÇÃO D. 75		12	CE05030021	MANILHA MOTOR	
2	CE05030009	JUNTA DE UNIÃO D. 75		13	* CE05010250	PARAFUSOS FIXAÇÃO MOTOR 2-3 CV..	
3	CE04121107	TAMPÃO 1/4" VÁLVULA		13	* CE05030022	PARAFUSOS FIXAÇÃO MOTOR 4 - 5,5 CV	
4	CE05030010	CORPO BOMBA		14	CE05010247	ROLAMIENTOS 2-3 CV	
5	* CE05030011	PÉ BOMBA 3 HP		15	* CE05010184	CONDENSADOR 35MF 1,5 HP	
5	* CE05030012	PÉ BOMBA 4 - 4,5 HP		16	* CE05010261	CAIXA BORNES 1,5-3 CV. II	
6	* CE05030013	TURBINA 3 CV		16	* CE05010190	CAIXA BORNES 1,5-3 CV. III	
6	* CE05030014	RODÍZIO 4 HP		17	CE05030023	TAMPA TRASEIRA MOTOR	
6	* CE05030015	RODÍZIO 5,5 HP		18	CE05010726	CAVILHA MOTOR 3 CV.	
7	CE05030016	JUNTA MECÂNICA		19	CE05010259	TAMPA VENTILADOR + VENTILADOR 2-3 CV	
8	CE05030017	JUNTA TAMPA DO CORPO		20	* MT999170	MOTOR COMPLETO 3 CV II	
9	CE05030018	TAMPA CORPO BOMBA		20	* MT999175	MOTOR COMPLETO 3 CV III	
10	CE05030019	PARAFUSOS CORPO BOMBA		20	* MT106045	MOTOR COMPLETO 4 CV III	

\* VEJA A FICHA DE OBSERVAÇÕES



CODIGO **NBP300M, NBP300T, NBP400T, NBP550T**DESCRIÇÃO: **BOMBA CONTRA-CORRENTE BARCELONA**

11	* CE05010548	ALHETA ROMPE ÁGUAS 2-3 CV.	20	* MT106055	MOTOR COMPLETO 5,5 CV III
11	* CE05030020	JUNTA V VA-30 (4 - 5,5 CV)			

CODIGO **NBP300M, NBP300T, NBP400T, NBP550T**DESCRIÇÃO: **BOMBA CONTRA-CORRENTE BARCELONA****OBSERVAÇÕES**

POS	CODIGO	OBSERVAÇÕES
5	*CE05030011	PARA: NBP300M, NBP300T
5	*CE05030012	PARA: NBP400T, NBP550T
6	*CE05030013	PARA: NBP300M, NBP300T
6	*CE05030014	PARA: NBP400T
6	*CE05030015	PARA: NBP550T
11	*CE05010548	PARA: NBP300M, NBP300T
11	*CE05030020	PARA: NBP400T, NBP550T
13	*CE05010250	PARA: NBP300M, NBP300T
13	*CE05030022	PARA: NBP400T, NBP550T
15	*CE05010184	PARA: NBP300M
16	*CE05010261	PARA: NBP300M
16	*CE05010190	PARA: NBP300T, NBP400T, NBP550T
20	*MT999170	PARA: NBP300M
20	*MT999175	PARA: NBP300T
20	*MT106045	PARA: NBP400T
20	*MT106055	PARA: NBP550T