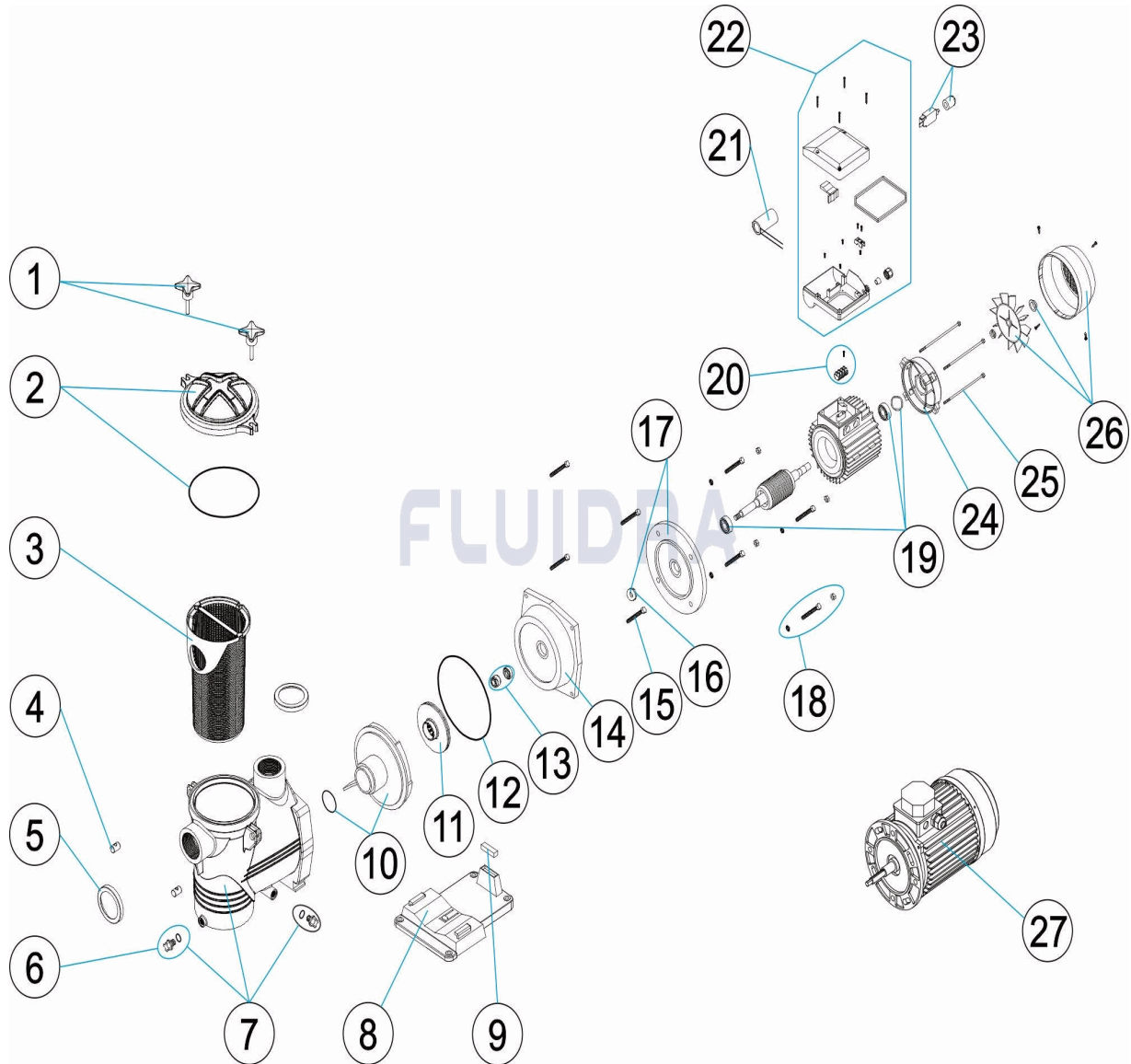


CODIGO **DP050M, DP050T, DP075M, DP075T, DP100M, DP100T, DP150M, DP150T, DP200M, DP200T, DP300M, DP300T**

DESCRIPCION: **BOMBA DENVER**



ESPAÑOL

POS	CODIGO	DESCRIPCION	CANTIDAD	POS	CODIGO	DESCRIPCION	CANTIDAD
1	CE05010725	CIERRE PREFILTRO		11	* CE05010199	TURBINA 1,5 CV	
2	CE05010542	TAPA PREFILTRO		11	* CE05010200	TURBINA 2 CV	
3	CE05010191	CESTO PREFILTRO		11	* CE05010235	TURBINA 3 CV	
4	CE05010066	PASADOR BASCULANTE		12	CE05010240	JUNTA CUERPO BOMBA	
5	CE05011151	ARO METALICO		13	CE05010118	JUNTA MECÁNICA	
6	CE04121107	TAPON 1/4 VALVULA		14	* CE05010081	BRIDA SOPORTE MOTOR 0,5 / 0,75 / 1 HP	
7	CE05010854	CUERPO BOMBA DY		14	* CE05010082	BRIDA SOPORTE MOTOR 1,5 / 2 / 3 HP	
8	* CE05010033	PIE BOMBA		15	CE05011236	TORNILLERIA BRIDA	
8	* CE05030011	PIE BOMBA 3 CV.		16	* CE05010047	ARANDELA ROMPE AGUAS	
9	* CE05010409	SILENT-BLOCK (16X45X13)		16	* CE05010547	ARANDELA ROMPE AGUAS 1,5 CV	
9	* CE05010410	SILENT-BLOCK (9X45X13)		16	* CE05010548	ARANDELA ROMPE AGUAS 2-3 CV	
10	CE05010073	DIFUSOR		17	* CE05010242	TAPA MOTOR DELANTERA 0,5-1CV.	

* NOTA OBSERVACIONES

CODIGO DP050M, DP050T, DP075M, DP075T, DP100M, DP100T, DP150M, DP150T, DP200M, DP200T, DP300M, DP300T

DESCRIPCION: BOMBA DENVER

11	* CE05010196	TURBINA 0,5 CV	17	* CE05010549	BRIDA MOTOR 1,5 CV.
11	* CE05010197	TURBINA 0,75 CV	17	* CE05010550	BRIDA MOTOR 2-3 CV.
11	* CE05010198	TURBINA 1 CV	18	* CE05010248	TORNILLOS FIJACION MOTOR 0,5-1 CV.
18	* CE05010249	TORNILLOS FIJACION MOTOR 1,5 CV.	24	* CE05010552	TAPA MOTOR 2-3 CV
19	* CE05010050	RODAMIENTO MOTOR	25	* CE05010254	ESPARRAGO MOTOR 0.5-1 CV
19	* CE05010246	RODAMIENTO 1,5 CV	25	* CE05010255	ESPARRAGO MOTOR 1.5 CV
19	* CE05010247	RODAMIENTO 2-3 CV	25	* CE05010256	ESPARRAGO MOTOR 2 CV
20	* CE05011083	REGLETA CONEXIÓN	25	* CE05010726	ESPARRAGO MOTOR 3 CV
20	* CE05010842	REGLETA CONEXIÓN	26	* CE05010056	CJTO. VENTILADOR + VTAPA 0,75 / 1 / 1,5 C
20	* CE05011067	REGLETA CONEXIÓN	26	* CE05010258	TAPA VENTILADOR + VENTILADOR 1,5 CV
21	* CE05010059	CONDENSADOR 12MF. 0,33 / 0,50 CV.	26	* CE05010259	TAPA VENTILADOR + VENTILADOR 2-3 CV
21	* CE05010060	CONDENSADOR 20MF. 0,75 / 1 / 1,5 CV.	27	* SE050MR0300	MOTOR NI/DY/SE2N/SE2R050M
21	* CE05010184	CONDENSADOR 35MF 1,5 HP	27	* SE050TR0300	MOTOR NI/DY/SE2N/SE2R050T
21	* CE05010260	CONDENSADOR 45 MF. 2 CV.	27	* SE075MR0300	MOTOR NI/DY/SE2N/SE2R075M
22	* CE05010057	CAJA CONEXIONES COMPLETA II	27	* SE075TR0300	MOTOR NI/DY/SE2N/SE2R075T
22	* CE05010058	CAJA CONEXIONES COMPLETA III	27	* SE100MR0300	MOTOR NI/DY/SE2N/SE2R100M
22	* CE05010261	CAJA CONEXIONES COMPLETA 1,5-3 CV. II	27	* SE100TR0300IE2	MOTOR IE2 NI/DY/SE2N/SE2R100T
22	* CE05010190	CAJA CONEXIONES COMPLETA 1,5-3 CV. II	27	* SE150MR0300	MOTOR NI/DY/SE2N/SE2R150M
23	* CE05011068	INTERRUPTOR 8,5A	27	* SE150TR0300IE2	MOTOR IE2 NI/DY/SE2N/SE2R150T
23	* CE05011069	INTERRUPTOR 10A	27	* SE200MR0300	MOTOR NI/DY/SE2N/SE2R200M
23	* CE05011070	INTERRUPTOR 14A	27	* SE200TR0300IE2	MOTOR IE2 NI/DY/SE2N/SE2R200T
24	* CE05010052	TAPA TRASERA MOTOR 1/2-3/4 HP	27	* SE300MR0300	MOTOR NI/DY/SE2N/SE2R300M
24	* CE05010551	TAPA MOTOR 1,5 CV	27	* SE300TR0300IE2	MOTOR IE2 NI/DY/SE2N/SE2R300T

CODIGO DP050M, DP050T, DP075M, DP075T, DP100M, DP100T, DP150M, DP150T, DP200M, DP200T, DP300M, DP300T

DESCRIPCION: BOMBA DENVER

OBSERVACIONES

POS	CODIGO	OBSERVACIONES
8	* CE05010033	PARA: DP050M, DP050T, DP075M, DP075T, DP100M, DP100T, DP150M, DP150T, DP200M, DP200T
8	* CE05030011	PARA: DP300M, DP300T
9	* CE05010409	PARA: DP050M, DP050T, DP075M, DP075T, DP100M, DP100T, DP150M, DP150T, DP200M, DP200T
9	* CE05010410	PARA: DP300M, DP300T
11	* CE05010196	PARA: DP050M, DP050T
11	* CE05010197	PARA: DP075M, DP075T
11	* CE05010198	PARA: DP100M, DP100T
11	* CE05010199	PARA: DP150M, DP150T
11	* CE05010200	PARA: DP200M, DP200T
11	* CE05010235	PARA: DP300M, DP300T
14	* CE05010081	PARA: DP050M, DP050T, DP075M, DP075T, DP100M, DP100T
14	* CE05010082	PARA: DP150M, DP150T, DP200M, DP200T, DP300M, DP300T
16	* CE05010047	PARA: DP050M, DP050T, DP075M, DP075T, DP100M, DP100T
16	* CE05010547	PARA: DP150M, DP150T
16	* CE05010548	PARA: DP200M, DP200T, DP300M, DP300T
17	* CE05010242	PARA: DP050M, DP050T, DP075M, DP075T, DP100M, DP100T
17	* CE05010549	PARA: DP150M, DP150T
17	* CE05010550	PARA: DP200M, DP200T, DP300M, DP300T
18	* CE05010248	PARA: DP050M, DP050T, DP075M, DP075T, DP100M, DP100T, DP200M, DP200T, DP300M, DP300T
18	* CE05010249	PARA: DP150M, DP150T
19	* CE05010050	PARA: DP050M, DP050T, DP075M, DP075T, DP100M, DP100T
19	* CE05010246	PARA: DP150M, DP150T
19	* CE05010247	PARA: DP200M, DP200T, DP300M, DP300T
20	* CE05011083	PARA: DP050M, DP075M, DP100M
20	* CE05010842	PARA: DP150M, DP200M, DP300M
20	* CE05011067	PARA: DP050T, DP075T, DP100T, DP150T, DP200T, DP300T
21	* CE05010059	PARA: DP050M, DP050T
21	* CE05010060	PARA: DP075M, DP075T, DP100M, DP100T
21	* CE05010184	PARA: DP150M, DP150T, DP300M, DP300T
21	* CE05010260	PARA: DP200M, DP200T
22	* CE05010057	PARA: DP050M, DP075M, DP100M
22	* CE05010058	PARA: DP050T, DP075T, DP100T
22	* CE05010261	PARA: DP150M, DP200M, DP300M
22	* CE05010190	PARA: DP150T, DP200T, DP300T
23	* CE05011068	PARA: DP150M
23	* CE05011069	PARA: DP200M
23	* CE05011070	PARA: DP300M
24	* CE05010052	PARA: DP050M, DP050T, DP075M, DP075T, DP100M, DP100T
24	* CE05010551	PARA: DP150M, DP150T
24	* CE05010552	PARA: DP200M, DP200T, DP300M, DP300T
25	* CE05010254	PARA: DP050M, DP050T, DP075M, DP075T, DP100M, DP100T
25	* CE05010255	PARA: DP150M, DP150T
25	* CE05010256	PARA: DP200M, DP200T

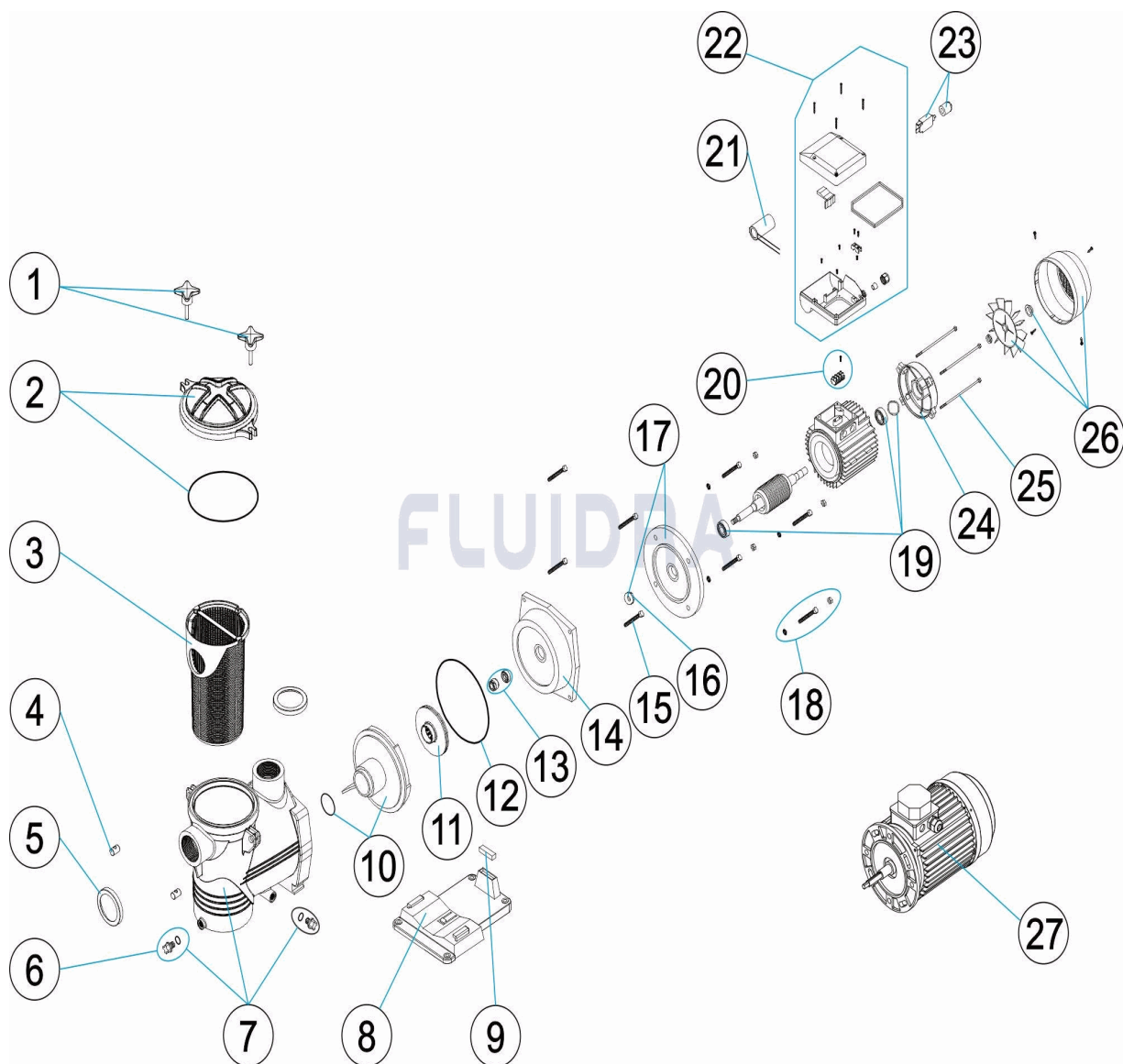
CODIGO **DP050M, DP050T, DP075M, DP075T, DP100M, DP100T, DP150M, DP150T,
DP200M, DP200T, DP300M, DP300T**

DESCRIPCION: **BOMBA DENVER**

25	* CE05010726	PARA: DP300M, DP300T
26	* CE05010056	PARA: DP050M, DP050T, DP075M, DP075T, DP100M, DP100T
26	* CE05010258	PARA: DP150M, DP150T
26	* CE05010259	PARA: DP200M, DP200T, DP300M, DP300T
27	* SE050MR0300	PARA: DP050M
27	* SE050TR0300	PARA: DP050T
27	* SE075MR0300	PARA: DP075M
27	* SE075TR0300	PARA: DP075T
27	* SE100MR0300	PARA: DP100M
27	* SE100TR0300IE2	PARA: DP100T
27	* SE150MR0300	PARA: DP150M
27	* SE150TR0300IE2	PARA: DP150T
27	* SE200MR0300	PARA: DP200M
27	* SE200TR0300IE2	PARA: DP200T
27	* SE300MR0300	PARA: DP300M
27	* SE300TR0300IE2	PARA: DP300T

CODE **DP050M, DP050T, DP075M, DP075T, DP100M, DP100T, DP150M, DP150T, DP200M, DP200T, DP300M, DP300T**

DESCRIPTION: **POMPE DENVER**



FRANCAIS

POS	CODE	DESCRIPTION	QUANTITE	POS	CODE	DESCRIPTION	QUANTITE
1	CE05010725	FERMETURE PREFILTRE		11	* CE05010199	TURBINE 1,5 CV	
2	CE05010542	COUVERCLE PRÉFILTRE		11	* CE05010200	TURBINE 2 CV	
3	CE05010191	PANIER PRÉFILTRE		11	* CE05010235	TURBINE 3 CV	
4	CE05010066	GOUJON BASCULANT		12	CE05010240	JOINT CORPS	
5	CE05011151	ARC MÉTALLIQUE		13	CE05010118	GARNITURE MÉCANIQUE	
6	CE04121107	BOUCHON 1/4' DE VANNE		14	* CE05010081	BRIDE SUPPORT MOTEUR 0,5 / 0,75 / 1 HP	
7	CE05010854	CORPS POMPE DY		14	* CE05010082	BRIDE SUPPORT MOTEUR 1,5 / 2 / 3 HP	
8	* CE05010033	SOCLE POMPE		15	CE05011236	VIS FLASQUE	
8	* CE05030011	SOCLE POMPE 3 HP		16	* CE05010047	RONDELLE BRISE EAU	
9	* CE05010409	SILENT-BLOCK (16X45X13)		16	* CE05010547	RONDELLE BRISE EAU 1,5 CV	
9	* CE05010410	SILENT-BLOCK (9X45X13)		16	* CE05010548	RONDELLE BRISE EAU 2-3 CV.	
10	CE05010073	DIFFUSEUR		17	* CE05010242	COUVERCLE MOTEUR AVANT 0,5-1 CV	

* VOIR FICHE D'OBSERVATIONS

CODE **DP050M, DP050T, DP075M, DP075T, DP100M, DP100T, DP150M, DP150T, DP200M, DP200T, DP300M, DP300T**

DESCRIPTION: **POMPE DENVER**

11	* CE05010196	TURBINE 0,5 CV	17	* CE05010549	FLASQUE ACCOUP. MOTEUR 1,5 CV.
11	* CE05010197	TURBINE 0,75 CV	17	* CE05010550	FLASQUE ACCOUP. MOTEUR 2-3 CV.
11	* CE05010198	TURBINE 1 CV	18	* CE05010248	VIS FIXATION MOTEUR 0,5-1 CV
18	* CE05010249	VIS FIXATION MOTEUR 1,5 CV.	24	* CE05010552	COUVERCLE MEMBRANE 2-3 CV
19	* CE05010050	ROULEMENT MOTEUR	25	* CE05010254	GOUJON MOTEUR 0,5-1 CV
19	* CE05010246	ROULEMENT 1,5 CV	25	* CE05010255	GOUJON MOTEUR 1.5 CV
19	* CE05010247	ROULEMENT 2-3 CV	25	* CE05010256	GOUJON MOTEUR 2 CV
20	* CE05011083	REGLETTE CONNEXION	25	* CE05010726	GOUJON MOTEUR 3 CV
20	* CE05010842	REGLETTE CONNEXION	26	* CE05010056	ENSEMBLE VENTILATEUR + COUVERCLE C
20	* CE05011067	REGLETTE CONNEXION	26	* CE05010258	CAPOT VENTILATEUR + VENTILATEUR 1,5 (
21	* CE05010059	CONDENSATEUR 12 UF 0,33 / 0,50 HP.	26	* CE05010259	CAPOT VENTILATEUR + VENTILATEUR 2-3 (
21	* CE05010060	CONDENSATEUR 20 UF 0,75 / 1 / 1,5 HP.	27	* SE050MR0300	MOTEUR NI/DY/SE2N/SE2R050M
21	* CE05010184	CONDENSATEUR 35MF 1,5 HP	27	* SE050TR0300	MOTEUR NI/DY/SE2N/SE2R050T
21	* CE05010260	CONDENSATEUR 45 UF	27	* SE075MR0300	MOTEUR NI/DY/SE2N/SE2R075M
22	* CE05010057	BOTILLER DE CONNECTIONS II	27	* SE075TR0300	MOTEUR NI/DY/SE2N/SE2R075T
22	* CE05010058	BOTILLER DE CONNECTIONS III	27	* SE100MR0300	MOTEUR NI/DY/SE2N/SE2R100M
22	* CE05010261	BOTILLER DE CONNECTIONS 1,5-3 CV. II	27	* SE100TR0300IE2	MOTEURIE2 NI/DY/SE2N/SE2R100T
22	* CE05010190	BOTILLER DE CONNECTIONS 1,5-3 CV. III	27	* SE150MR0300	MOTEUR NI/DY/SE2N/SE2R150M
23	* CE05011068	INTERRUPTEUR 8,5A	27	* SE150TR0300IE2	MOTEUR IE2 NI/DY/SE2N/SE2R150T
23	* CE05011069	INTERRUPTEUR 10A	27	* SE200MR0300	MOTEUR NI/DY/SE2N/SE2R200M
23	* CE05011070	INTERRUPTEUR 14A	27	* SE200TR0300IE2	MOTEUR IE2 NI/DY/SE2N/SE2R200T
24	* CE05010052	COUVERCLE ARRIÈRE MOTEUR 1/2-3/41 †	27	* SE300MR0300	MOTEUR NI/DY/SE2N/SE2R300M
24	* CE05010551	COUVERCLE MEMBRANE 1,5 CV	27	* SE300TR0300IE2	MOTEUR IE2 NI/DY/SE2N/SE2R300T

CODE **DP050M, DP050T, DP075M, DP075T, DP100M, DP100T, DP150M, DP150T, DP200M, DP200T, DP300M, DP300T**

DESCRIPTION: **POMPE DENVER**

OBSERVATIONS

POS	CODE	OBSERVATIONS
8	* CE05010033	POUR: DP050M, DP050T, DP075M, DP075T, DP100M, DP100T, DP150M, DP150T, DP200M, DP200T
8	* CE05030011	POUR: DP300M, DP300T
9	* CE05010409	POUR: DP050M, DP050T, DP075M, DP075T, DP100M, DP100T, DP150M, DP150T, DP200M, DP200T
9	* CE05010410	POUR: DP300M, DP300T
11	* CE05010196	POUR: DP050M, DP050T
11	* CE05010197	POUR: DP075M, DP075T
11	* CE05010198	POUR: DP100M, DP100T
11	* CE05010199	POUR: DP150M, DP150T
11	* CE05010200	POUR: DP200M, DP200T
11	* CE05010235	POUR: DP300M, DP300T
14	* CE05010081	POUR: DP050M, DP050T, DP075M, DP075T, DP100M, DP100T
14	* CE05010082	POUR: DP150M, DP150T, DP200M, DP200T, DP300M, DP300T
16	* CE05010047	POUR: DP050M, DP050T, DP075M, DP075T, DP100M, DP100T
16	* CE05010547	POUR: DP150M, DP150T
16	* CE05010548	POUR: DP200M, DP200T, DP300M, DP300T
17	* CE05010242	POUR: DP050M, DP050T, DP075M, DP075T, DP100M, DP100T
17	* CE05010549	POUR: DP150M, DP150T
17	* CE05010550	POUR: DP200M, DP200T, DP300M, DP300T
18	* CE05010248	POUR: DP050M, DP050T, DP075M, DP075T, DP100M, DP100T, DP200M, DP200T, DP300M, DP300T
18	* CE05010249	POUR: DP150M, DP150T
19	* CE05010050	POUR: DP050M, DP050T, DP075M, DP075T, DP100M, DP100T
19	* CE05010246	POUR: DP150M, DP150T
19	* CE05010247	POUR: DP200M, DP200T, DP300M, DP300T
20	* CE05011083	POUR: DP050M, DP075M, DP100M
20	* CE05010842	POUR: DP150M, DP200M, DP300M
20	* CE05011067	POUR: DP050T, DP075T, DP100T, DP150T, DP200T, DP300T
21	* CE05010059	POUR: DP050M, DP050T
21	* CE05010060	POUR: DP075M, DP075T, DP100M, DP100T
21	* CE05010184	POUR: DP150M, DP150T, DP300M, DP300T
21	* CE05010260	POUR: DP200M, DP200T
22	* CE05010057	POUR: DP050M, DP075M, DP100M
22	* CE05010058	POUR: DP050T, DP075T, DP100T
22	* CE05010261	POUR: DP150M, DP200M, DP300M
22	* CE05010190	POUR: DP150T, DP200T, DP300T
23	* CE05011068	POUR: DP150M
23	* CE05011069	POUR: DP200M
23	* CE05011070	POUR: DP300M
24	* CE05010052	POUR: DP050M, DP050T, DP075M, DP075T, DP100M, DP100T
24	* CE05010551	POUR: DP150M, DP150T
24	* CE05010552	POUR: DP200M, DP200T, DP300M, DP300T
25	* CE05010254	POUR: DP050M, DP050T, DP075M, DP075T, DP100M, DP100T
25	* CE05010255	POUR: DP150M, DP150T
25	* CE05010256	POUR: DP200M, DP200T

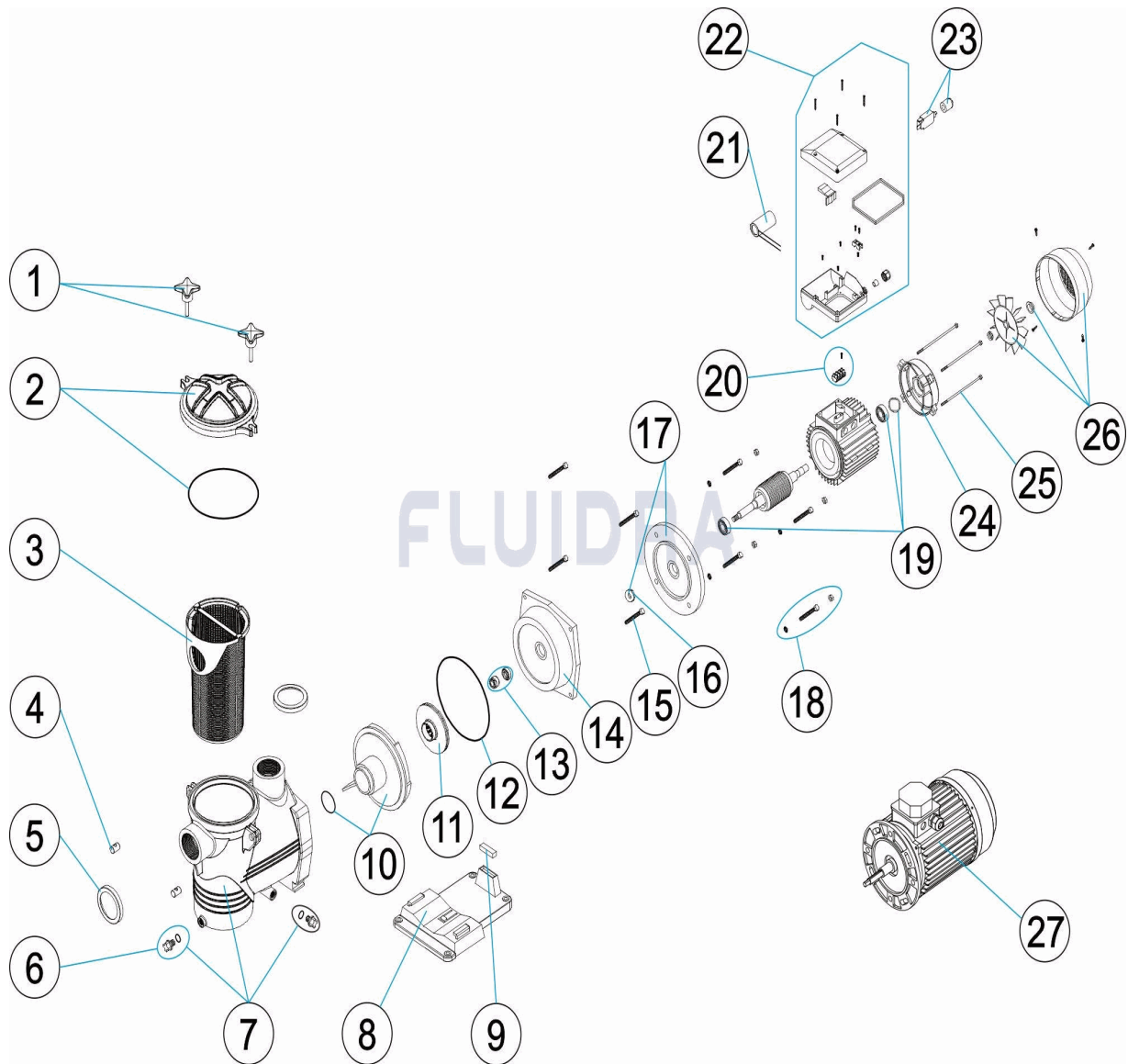
CODE **DP050M, DP050T, DP075M, DP075T, DP100M, DP100T, DP150M, DP150T,
DP200M, DP200T, DP300M, DP300T**

DESCRIPTION: **POMPE DENVER**

25	* CE05010726	POUR: DP300M, DP300T
26	* CE05010056	POUR: DP050M, DP050T, DP075M, DP075T, DP100M, DP100T
26	* CE05010258	POUR: DP150M, DP150T
26	* CE05010259	POUR: DP200M, DP200T, DP300M, DP300T
27	* SE050MR0300	POUR: DP050M
27	* SE050TR0300	POUR: DP050T
27	* SE075MR0300	POUR: DP075M
27	* SE075TR0300	POUR: DP075T
27	* SE100MR0300	POUR: DP100M
27	* SE100TR0300IE2	POUR: DP100T
27	* SE150MR0300	POUR: DP150M
27	* SE150TR0300IE2	POUR: DP150T
27	* SE200MR0300	POUR: DP200M
27	* SE200TR0300IE2	POUR: DP200T
27	* SE300MR0300	POUR: DP300M
27	* SE300TR0300IE2	POUR: DP300T

CODE **DP050M, DP050T, DP075M, DP075T, DP100M, DP100T, DP150M, DP150T, DP200M, DP200T, DP300M, DP300T**

DESCRIPTION: **DENVER PUMP**



ENGLISH

POS	CODE	DESCRIPTION	QUANTITY	POS	CODE	DESCRIPTION	QUANTITY
1	CE05010725	PRE-FILTER CLOSURE		11	* CE05010199	IMPELLER 1,5 CV	
2	CE05010542	PRE-FILTER COVER		11	* CE05010200	IMPELLER 2 CV	
3	CE05010191	PRE-FILTER BASKET		11	* CE05010235	IMPELLER 3 CV	
4	CE05010066	SWIVEL PIN		12	CE05010240	BODY GASKET	
5	CE05011151	METAL RING		13	CE05010118	MECHANICAL SEAL	
6	CE04121107	PLUG 1/4"		14	* CE05010081	MOTOR BRIDLE 0,5 / 0,75 / 1 HP	
7	CE05010854	DY PUMP HOUSING		14	* CE05010082	MOTOR BRIDLE 1,5 / 2 / 3 HP	
8	* CE05010033	PUMP BASE		15	CE05011236	FLANGE SCREWS	
8	* CE05030011	PUMP BASE 3 HP		16	* CE05010047	BREAKWATER WASHER	
9	* CE05010409	SILENTBLOCK (16X45X13)		16	* CE05010547	BREAKWATER WASHER 1,5 CV	
9	* CE05010410	SILENTBLOCK (9X45X13)		16	* CE05010548	BREAKWATER WASHER 2-3 CV.	
10	CE05010073	DIFFUSER		17	* CE05010242	0.5-1 CV FRONT MOTOR COVER	

CODE **DP050M, DP050T, DP075M, DP075T, DP100M, DP100T, DP150M, DP150T, DP200M, DP200T, DP300M, DP300T**

DESCRIPTION: **DENVER PUMP**

11	* CE05010196	IMPELLER 0,5 CV	17	* CE05010549	MOTOR CLAMP 1,5 CV.
11	* CE05010197	IMPELLER 0,75 CV	17	* CE05010550	MOTOR CLAMP 2-3 CV.
11	* CE05010198	IMPELLER 1 CV	18	* CE05010248	0.5-1 CV MOTOR FIXING SCREWS
18	* CE05010249	1,5 CV. MOTOR FIXING SCREWS	24	* CE05010552	MEMBRANE COVER SET 2-3 CV
19	* CE05010050	MOTOR BEARINGS	25	* CE05010254	0.5-1 CV MOTOR STUD
19	* CE05010246	BEARING 1,5 CV	25	* CE05010255	1.5 CV MOTOR STUD
19	* CE05010247	BEARING 2-3 CV	25	* CE05010256	2 CV MOTOR STUD
20	* CE05011083	CONNECTION GRID	25	* CE05010726	3 CV MOTOR STUD
20	* CE05010842	CONNECTION GRID	26	* CE05010056	FAN + COVER ASSEMBLY FOR 0,75 / 1 / 1,5
20	* CE05011067	CONNECTION GRID	26	* CE05010258	FAN COVER + FAN 1,5 CV
21	* CE05010059	CONDENSER 12 UF 0,33 / 0,50 HP.	26	* CE05010259	FAN COVER + FAN 2-3 CV
21	* CE05010060	CONDENSER 20 UF 0,75 / 1 / 1,5 HP.	27	* SE050MR0300	MOTOR NI/DY/SE2N/SE2R050M
21	* CE05010184	CONDENSER 35MF 1,5 HP	27	* SE050TR0300	MOTOR NI/DY/SE2N/SE2R050T
21	* CE05010260	CONDENSER 45 UF	27	* SE075MR0300	MOTOR NI/DY/SE2N/SE2R075M
22	* CE05010057	TERMINAL BOX II	27	* SE075TR0300	MOTOR NI/DY/SE2N/SE2R075T
22	* CE05010058	TERMINAL BOX III	27	* SE100MR0300	MOTOR NI/DY/SE2N/SE2R100M
22	* CE05010261	TERMINAL BOX 1,5-3 CV. II	27	* SE100TR0300IE2	MOTOR IE2 NI/DY/SE2N/SE2R100T
22	* CE05010190	TERMINAL BOX 1,5-3 CV. III	27	* SE150MR0300	MOTOR NI/DY/SE2N/SE2R150M
23	* CE05011068	8,5A CIRCUIT BREAKER	27	* SE150TR0300IE2	MOTOR IE2 NI/DY/SE2N/SE2R150T
23	* CE05011069	10A CIRCUIT BREAKER	27	* SE200MR0300	MOTOR NI/DY/SE2N/SE2R200M
23	* CE05011070	14A CIRCUIT BREAKER	27	* SE200TR0300IE2	MOTOR IE2 NI/DY/SE2N/SE2R200T
24	* CE05010052	REAR MOTOR COVER 1/2-3/41 HP	27	* SE300MR0300	MOTOR NI/DY/SE2N/SE2R300M
24	* CE05010551	MEMBRANE COVER SET 1,5 CV	27	* SE300TR0300IE2	MOTOR IE2 NI/DY/SE2N/SE2R300T

CODE **DP050M, DP050T, DP075M, DP075T, DP100M, DP100T, DP150M, DP150T, DP200M, DP200T, DP300M, DP300T**

DESCRIPTION: **DENVER PUMP**

OBSERVATIONS

POS	CODE	OBSERVATIONS
8	* CE05010033	FOR: DP050M, DP050T, DP075M, DP075T, DP100M, DP100T, DP150M, DP150T, DP200M, DP200T
8	* CE05030011	FOR: DP300M, DP300T
9	* CE05010409	FOR: DP050M, DP050T, DP075M, DP075T, DP100M, DP100T, DP150M, DP150T, DP200M, DP200T
9	* CE05010410	FOR: DP300M, DP300T
11	* CE05010196	FOR: DP050M, DP050T
11	* CE05010197	FOR: DP075M, DP075T
11	* CE05010198	FOR: DP100M, DP100T
11	* CE05010199	FOR: DP150M, DP150T
11	* CE05010200	FOR: DP200M, DP200T
11	* CE05010235	FOR: DP300M, DP300T
14	* CE05010081	FOR: DP050M, DP050T, DP075M, DP075T, DP100M, DP100T
14	* CE05010082	FOR: DP150M, DP150T, DP200M, DP200T, DP300M, DP300T
16	* CE05010047	FOR: DP050M, DP050T, DP075M, DP075T, DP100M, DP100T
16	* CE05010547	FOR: DP150M, DP150T
16	* CE05010548	FOR: DP200M, DP200T, DP300M, DP300T
17	* CE05010242	FOR: DP050M, DP050T, DP075M, DP075T, DP100M, DP100T
17	* CE05010549	FOR: DP150M, DP150T
17	* CE05010550	FOR: DP200M, DP200T, DP300M, DP300T
18	* CE05010248	FOR: DP050M, DP050T, DP075M, DP075T, DP100M, DP100T, DP200M, DP200T, DP300M, DP300T
18	* CE05010249	FOR: DP150M, DP150T
19	* CE05010050	FOR: DP050M, DP050T, DP075M, DP075T, DP100M, DP100T
19	* CE05010246	FOR: DP150M, DP150T
19	* CE05010247	FOR: DP200M, DP200T, DP300M, DP300T
20	* CE05011083	FOR: DP050M, DP075M, DP100M
20	* CE05010842	FOR: DP150M, DP200M, DP300M
20	* CE05011067	FOR: DP050T, DP075T, DP100T, DP150T, DP200T, DP300T
21	* CE05010059	FOR: DP050M, DP050T
21	* CE05010060	FOR: DP075M, DP075T, DP100M, DP100T
21	* CE05010184	FOR: DP150M, DP150T, DP300M, DP300T
21	* CE05010260	FOR: DP200M, DP200T
22	* CE05010057	FOR: DP050M, DP075M, DP100M
22	* CE05010058	FOR: DP050T, DP075T, DP100T
22	* CE05010261	FOR: DP150M, DP200M, DP300M
22	* CE05010190	FOR: DP150T, DP200T, DP300T
23	* CE05011068	FOR: DP150M
23	* CE05011069	FOR: DP200M
23	* CE05011070	FOR: DP300M
24	* CE05010052	FOR: DP050M, DP050T, DP075M, DP075T, DP100M, DP100T
24	* CE05010551	FOR: DP150M, DP150T
24	* CE05010552	FOR: DP200M, DP200T, DP300M, DP300T
25	* CE05010254	FOR: DP050M, DP050T, DP075M, DP075T, DP100M, DP100T
25	* CE05010255	FOR: DP150M, DP150T
25	* CE05010256	FOR: DP200M, DP200T

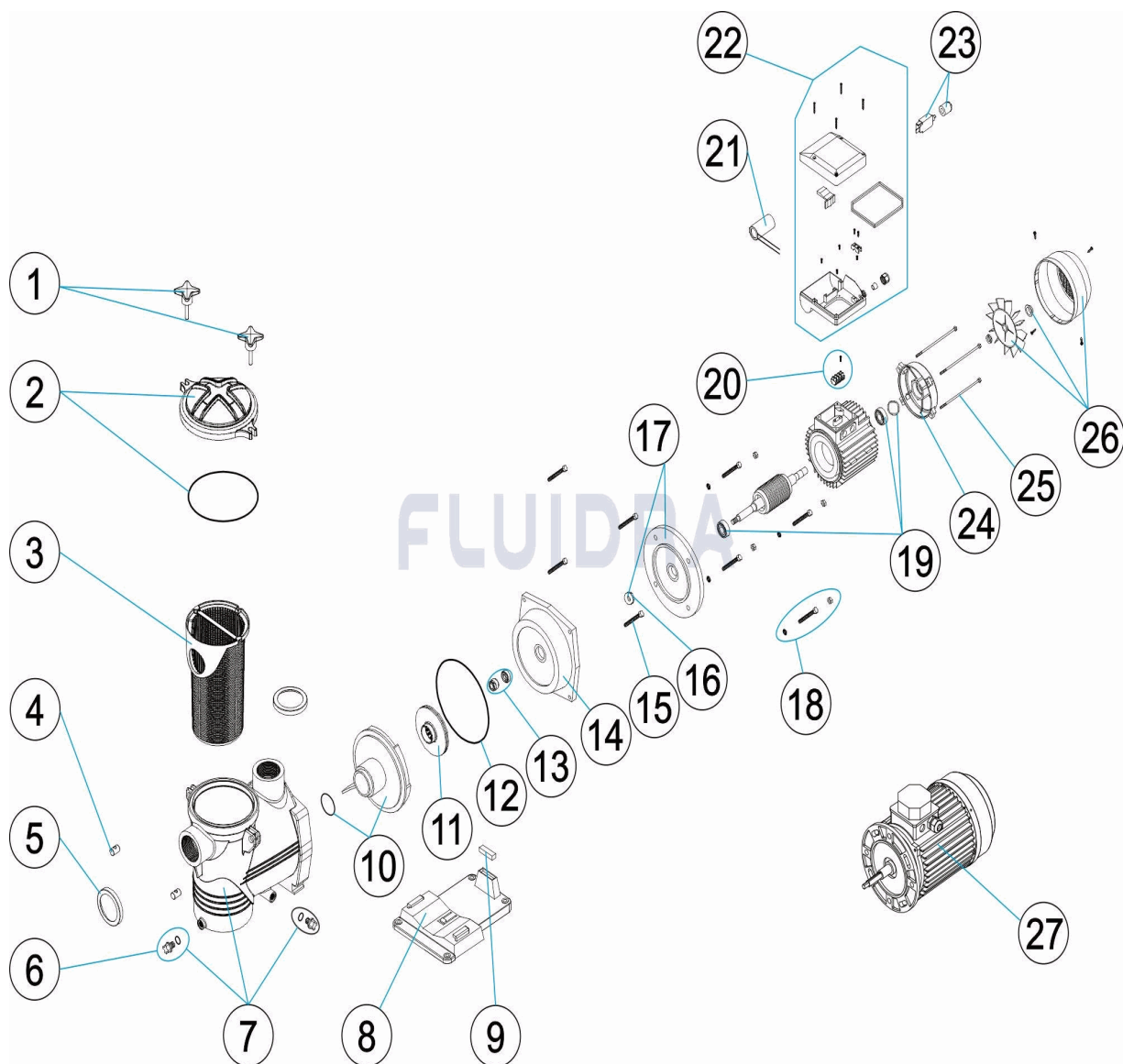
CODE **DP050M, DP050T, DP075M, DP075T, DP100M, DP100T, DP150M, DP150T,
DP200M, DP200T, DP300M, DP300T**

DESCRIPTION: **DENVER PUMP**

25	* CE05010726	FOR: DP300M, DP300T
26	* CE05010056	FOR: DP050M, DP050T, DP075M, DP075T, DP100M, DP100T
26	* CE05010258	FOR: DP150M, DP150T
26	* CE05010259	FOR: DP200M, DP200T, DP300M, DP300T
27	* SE050MR0300	FOR: DP050M
27	* SE050TR0300	FOR: DP050T
27	* SE075MR0300	FOR: DP075M
27	* SE075TR0300	FOR: DP075T
27	* SE100MR0300	FOR: DP100M
27	* SE100TR0300IE2	FOR: DP100T
27	* SE150MR0300	FOR: DP150M
27	* SE150TR0300IE2	FOR: DP150T
27	* SE200MR0300	FOR: DP200M
27	* SE200TR0300IE2	FOR: DP200T
27	* SE300MR0300	FOR: DP300M
27	* SE300TR0300IE2	FOR: DP300T

CODICE **DP050M, DP050T, DP075M, DP075T, DP100M, DP100T, DP150M, DP150T, DP200M, DP200T, DP300M, DP300T**

DESCRIZIONE: **POMPA DENVER**



ITALIANO

POS	CODICE	DESCRIZIONE	QUANTITA'	POS	CODICE	DESCRIZIONE	QUANTITA'
1	CE05010725	CHIUSURA PREFILTRO		11	* CE05010199	TURBINA 1,5 CV	
2	CE05010542	COPERCHIO PREFILTRO		11	* CE05010200	TURBINA 2 CV	
3	CE05010191	CESTO PREFILTRO		11	* CE05010235	TURBINA 3 CV	
4	CE05010066	PERNO BASCULANTE		12	CE05010240	GUARNIZIONE CORPO	
5	CE05011151	ANELLO METALLICO		13	CE05010118	GUARNIZIONE MECCANICA	
6	CE04121107	COPERCHIO 1/4' VALVOLA		14	* CE05010081	FLANGIA SUPPORTO MOTORE 0,5 / 0,75 / 1	
7	CE05010854	CORPO POMPA DY		14	* CE05010082	FLANGIA SUPPORTO MOTORE 1,5 / 2 / 3 HF	
8	* CE05010033	BASAMENTO POMPA		15	CE05011236	BUTTONERIA FLANGIA	
8	* CE05030011	PIEDE POMPA 3 HP		16	* CE05010047	RONDELLA	
9	* CE05010409	SILENBLOC (16X45X13)		16	* CE05010547	RONDELLA 1,5 CV	
9	* CE05010410	SILENBLOC (9X45X13)		16	* CE05010548	RONDELLA 2-3 CV.	
10	CE05010073	DIFFUSORE		17	* CE05010242	COPERCHIO ANTERIORE MOTORE 0,5-1 CV	

* SI FACCIA RIFERIMENTO AL FOGLIO DELLE OSSERVAZIONI

CODICE DP050M, DP050T, DP075M, DP075T, DP100M, DP100T, DP150M, DP150T, DP200M, DP200T, DP300M, DP300T

DESCRIZIONE: POMPA DENVER

11	* CE05010196	TURBINA 0,5 CV	17	* CE05010549	FLANGIA MOTORE 1,5 CV.
11	* CE05010197	TURBINA 0,75 CV	17	* CE05010550	FLANGIA MOTORE 2-3 CV.
11	* CE05010198	TURBINA 1 CV	18	* CE05010248	VITI FISSAGGIO MOTORE 0,5-1 CV
18	* CE05010249	VITI FISSAGGIO MOTORE 1,5 CV.	24	* CE05010552	CHIUSURA DIAFRAMMA 2-3 CV
19	* CE05010050	CUSCINETTO MOTORE	25	* CE05010254	BARRA FILETTATA MOTORE 0,5-1 CV
19	* CE05010246	CUSCINETTO 1,5 CV	25	* CE05010255	BARRA FILETTATA MOTORE 1.5 CV
19	* CE05010247	CUSCINETTO 2-3 CV	25	* CE05010256	BARRA FILETTATA MOTORE 2 CV
20	* CE05011083	MORSETTI CONNESSIONE	25	* CE05010726	BARRA FILETTATA MOTORE 3 CV
20	* CE05010842	MORSETTI CONNESSIONE	26	* CE05010056	GRUPPO VENTILATORE + COPERCHIO 0,75
20	* CE05011067	MORSETTI CONNESSIONE	26	* CE05010258	COPERCHIO VENTILATORE + VENTILATOR
21	* CE05010059	CONDENSATORE 12 UF 0,33 / 0,50 HP.	26	* CE05010259	COPERCHIO VENTILATORE + VENTILATOR
21	* CE05010060	CONDENSATORE 20 UF 0,75 / 1 / 1,5 HP.	27	* SE050MR0300	MOTORE NI/DY/SE2N/SE2R050M
21	* CE05010184	CONDENSATORE 35MF 1,5 HP	27	* SE050TR0300	MOTORE NI/DY/SE2N/SE2R050T
21	* CE05010260	CONDENSATORE 45 UF	27	* SE075MR0300	MOTORE NI/DY/SE2N/SE2R075M
22	* CE05010057	COPERCHIO MORSETTIERA II	27	* SE075TR0300	MOTORE NI/DY/SE2N/SE2R075T
22	* CE05010058	COPERCHIO MORSETTIERA III	27	* SE100MR0300	MOTORE NI/DY/SE2N/SE2R100M
22	* CE05010261	COPERCHIO MORSETTIERA 1,5-3 CV. II	27	* SE100TR0300IE2	MOTORE IE2 NI/DY/SE2N/SE2R100T
22	* CE05010190	COPERCHIO MORSETTIERA 1,5-3 CV. III	27	* SE150MR0300	MOTORE NI/DY/SE2N/SE2R150M
23	* CE05011068	INTERRUTTORE 8,5A	27	* SE150TR0300IE2	MOTORE IE2 NI/DY/SE2N/SE2R150T
23	* CE05011069	INTERRUTTORE 10A	27	* SE200MR0300	MOTORE NI/DY/SE2N/SE2R200M
23	* CE05011070	INTERRUTTORE 14A	27	* SE200TR0300IE2	MOTORE IE2 NI/DY/SE2N/SE2R200T
24	* CE05010052	COPERCHIO POSTERIORE MOTORE 1/2-3	27	* SE300MR0300	MOTORE NI/DY/SE2N/SE2R300M
24	* CE05010551	CHIUSURA DIAFRAMMA 1,5 CV	27	* SE300TR0300IE2	MOTORE IE2 NI/DY/SE2N/SE2R300T

CODICE DP050M, DP050T, DP075M, DP075T, DP100M, DP100T, DP150M, DP150T, DP200M, DP200T, DP300M, DP300T

DESCRIZIONE: POMPA DENVER

OSSERVAZIONI

POS	CODICE	OSSERVAZIONI
8	*CE05010033	PER: DP050M, DP050T, DP075M, DP075T, DP100M, DP100T, DP150M, DP150T, DP200M, DP200T
8	*CE05030011	PER: DP300M, DP300T
9	*CE05010409	PER: DP050M, DP050T, DP075M, DP075T, DP100M, DP100T, DP150M, DP150T, DP200M, DP200T
9	*CE05010410	PER: DP300M, DP300T
11	*CE05010196	PER: DP050M, DP050T
11	*CE05010197	PER: DP075M, DP075T
11	*CE05010198	PER: DP100M, DP100T
11	*CE05010199	PER: DP150M, DP150T
11	*CE05010200	PER: DP200M, DP200T
11	*CE05010235	PER: DP300M, DP300T
14	*CE05010081	PER: DP050M, DP050T, DP075M, DP075T, DP100M, DP100T
14	*CE05010082	PER: DP150M, DP150T, DP200M, DP200T, DP300M, DP300T
16	*CE05010047	PER: DP050M, DP050T, DP075M, DP075T, DP100M, DP100T
16	*CE05010547	PER: DP150M, DP150T
16	*CE05010548	PER: DP200M, DP200T, DP300M, DP300T
17	*CE05010242	PER: DP050M, DP050T, DP075M, DP075T, DP100M, DP100T
17	*CE05010549	PER: DP150M, DP150T
17	*CE05010550	PER: DP200M, DP200T, DP300M, DP300T
18	*CE05010248	PER: DP050M, DP050T, DP075M, DP075T, DP100M, DP100T, DP200M, DP200T, DP300M, DP300T
18	*CE05010249	PER: DP150M, DP150T
19	*CE05010050	PER: DP050M, DP050T, DP075M, DP075T, DP100M, DP100T
19	*CE05010246	PER: DP150M, DP150T
19	*CE05010247	PER: DP200M, DP200T, DP300M, DP300T
20	*CE05011083	PER: DP050M, DP075M, DP100M
20	*CE05010842	PER: DP150M, DP200M, DP300M
20	*CE05011067	PER: DP050T, DP075T, DP100T, DP150T, DP200T, DP300T
21	*CE05010059	PER: DP050M, DP050T
21	*CE05010060	PER: DP075M, DP075T, DP100M, DP100T
21	*CE05010184	PER: DP150M, DP150T, DP300M, DP300T
21	*CE05010260	PER: DP200M, DP200T
22	*CE05010057	PER: DP050M, DP075M, DP100M
22	*CE05010058	PER: DP050T, DP075T, DP100T
22	*CE05010261	PER: DP150M, DP200M, DP300M
22	*CE05010190	PER: DP150T, DP200T, DP300T
23	*CE05011068	PER: DP150M
23	*CE05011069	PER: DP200M
23	*CE05011070	PER: DP300M
24	*CE05010052	PER: DP050M, DP050T, DP075M, DP075T, DP100M, DP100T
24	*CE05010551	PER: DP150M, DP150T
24	*CE05010552	PER: DP200M, DP200T, DP300M, DP300T
25	*CE05010254	PER: DP050M, DP050T, DP075M, DP075T, DP100M, DP100T
25	*CE05010255	PER: DP150M, DP150T
25	*CE05010256	PER: DP200M, DP200T

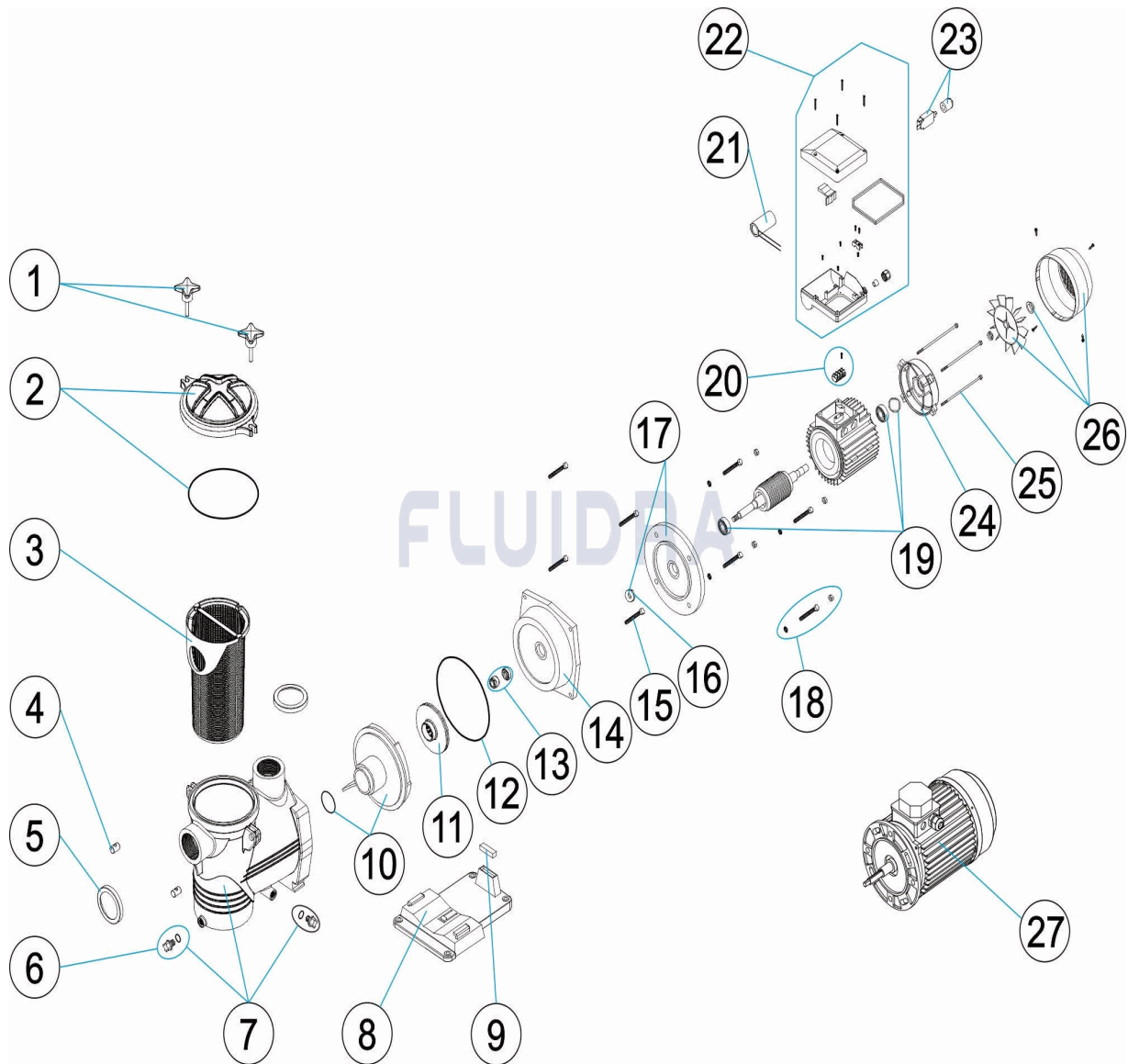
CODICE **DP050M, DP050T, DP075M, DP075T, DP100M, DP100T, DP150M, DP150T, DP200M, DP200T, DP300M, DP300T**

DESCRIZIONE: **POMPA DENVER**

25	* CE05010726	PER: DP300M, DP300T
26	* CE05010056	PER: DP050M, DP050T, DP075M, DP075T, DP100M, DP100T
26	* CE05010258	PER: DP150M, DP150T
26	* CE05010259	PER: DP200M, DP200T, DP300M, DP300T
27	* SE050MR0300	PER: DP050M
27	* SE050TR0300	PER: DP050T
27	* SE075MR0300	PER: DP075M
27	* SE075TR0300	PER: DP075T
27	* SE100MR0300	PER: DP100M
27	* SE100TR0300IE2	PER: DP100T
27	* SE150MR0300	PER: DP150M
27	* SE150TR0300IE2	PER: DP150T
27	* SE200MR0300	PER: DP200M
27	* SE200TR0300IE2	PER: DP200T
27	* SE300MR0300	PER: DP300M
27	* SE300TR0300IE2	PER: DP300T

CODE **DP050M, DP050T, DP075M, DP075T, DP100M, DP100T, DP150M, DP150T, DP200M, DP200T, DP300M, DP300T**

BESCHREIBUNG: **PUMPE DENVER**



DEUTSCH

POS	CODE	BESCHREIBUNG	MENGE	POS	CODE	BESCHREIBUNG	MENGE
1	CE05010725	SCHLISSVORRICHTUNG VORFILTER		11	* CE05010199	TURBINE 1,5 CV	
2	CE05010542	VORFILTERDECKEL		11	* CE05010200	TURBINE 2 CV	
3	CE05010191	VORFILTERKORB		11	* CE05010235	TURBINE 3 CV	
4	CE05010066	KIPPSTIFT		12	CE05010240	DICHTUNG PUMPENGEHÄUSE	
5	CE05011151	METALLBÜGEL		13	CE05010118	GLEITRINGDICHTUNG	
6	CE04121107	STOPFEN 1/4' VENTIL		14	* CE05010081	FLANSCH MOTORHALTERUNG 0,5 / 0,75 / 1	
7	CE05010854	PUMPENGEHÄUSE DY		14	* CE05010082	FLANSCH MOTORHALTERUNG 1,5 / 2 / 3 HF	
8	* CE05010033	PUMPENFUSS		15	CE05011236	SCHRAUBENSATZ FLANSCH	
8	* CE05030011	PUMPENFUSS 3 CV		16	* CE05010047	UNTERLEGSCHIBE WASSERBRECHER	
9	* CE05010409	SCHWINGUNGSDÄMPFER (16 X 45 X 13)		16	* CE05010547	UNTERLEGSCHIBE WASSERBRECHER 1,5	
9	* CE05010410	SCHWINGUNGSDÄMPFER (9 X 45 X 13)		16	* CE05010548	UNTERLEGSCHIBE WASSERBRECHER 2 -	
10	CE05010073	WASSERVERTEILER		17	* CE05010242	MOTORDECKEL VORNE 0,5 - 1 CV	

* SIEHE ANMERKUNGSBLATT

CODE **DP050M, DP050T, DP075M, DP075T, DP100M, DP100T, DP150M, DP150T, DP200M, DP200T, DP300M, DP300T**

BESCHREIBUNG: **PUMPE DENVER**

11	* CE05010196	TURBINE 0,5 CV	17	* CE05010549	MOTORFLANSCH 1,5 CV
11	* CE05010197	TURBINE 0,75 CV	17	* CE05010550	MOTORFLANSCH 2 - 3 CV
11	* CE05010198	TURBINE 1 CV	18	* CE05010248	FIXIERSCHRAUBEN MOTOR 0,5 - 1 CV
18	* CE05010249	FIXIERSCHRAUBEN MOTOR 1,5 CV	24	* CE05010552	MOTORDECKEL 2 - 3 CV
19	* CE05010050	WÄLZLAGER MOTOR	25	* CE05010254	BOLZEN MOTOR 0,5 - 1 CV
19	* CE05010246	WÄLZLAGER 1,5 CV	25	* CE05010255	BOLZEN MOTOR 1,5 CV
19	* CE05010247	WÄLZLAGER 2 - 3 CV	25	* CE05010256	BOLZEN MOTOR 2 CV
20	* CE05011083	KLEMMLEISTE	25	* CE05010726	BOLZEN MOTOR 3 CV
20	* CE05010842	KLEMMLEISTE	26	* CE05010056	SET VENTILATOR MIT ABDECKUNG 0,75 / 1
20	* CE05011067	KLEMMLEISTE	26	* CE05010258	VENTILATORDECKEL MIT VENTILATOR 1,5
21	* CE05010059	KONDENSATOR 12 MF 0,33 / 0,50 CV	26	* CE05010259	VENTILATORDECKEL MIT VENTILATOR 2 - 3
21	* CE05010060	KONDENSATOR 20 MF 0,75 / 1 / 1,5 CV	27	* SE050MR0300	MOTOR NI/DY/SE2N/SE2R050M
21	* CE05010184	KONDENSATOR 35 MF 1,5 HP	27	* SE050TR0300	MOTOR NI/DY/SE2N/SE2R050T
21	* CE05010260	KONDENSATOR 45 MF 2 CV	27	* SE075MR0300	MOTOR NI/DY/SE2N/SE2R075M
22	* CE05010057	ANSCHLUSSGEHÄUSE KOMPLETT II	27	* SE075TR0300	MOTOR NI/DY/SE2N/SE2R075T
22	* CE05010058	ANSCHLUSSGEHÄUSE KOMPLETT III	27	* SE100MR0300	MOTOR NI/DY/SE2N/SE2R100M
22	* CE05010261	ANSCHLUSSGEHÄUSE KOMPLETT 1,5 - 3 CV	27	* SE100TR0300IE2	MOTOR IE2 NI/DY/SE2N/SE2R100T
22	* CE05010190	ANSCHLUSSGEHÄUSE KOMPLETT 1,5 - 3 CV	27	* SE150MR0300	MOTOR NI/DY/SE2N/SE2R150M
23	* CE05011068	SCHALTER 8,5A	27	* SE150TR0300IE2	MOTOR IE2 NI/DY/SE2N/SE2R150T
23	* CE05011069	SCHALTER 10A	27	* SE200MR0300	MOTOR NI/DY/SE2N/SE2R200M
23	* CE05011070	SCHALTER 14A	27	* SE200TR0300IE2	MOTOR IE2 NI/DY/SE2N/SE2R200T
24	* CE05010052	MOTORDECKEL HINTEN 1/2 - 3/41 HP	27	* SE300MR0300	MOTOR NI/DY/SE2N/SE2R300M
24	* CE05010551	MOTORDECKEL 1,5 CV	27	* SE300TR0300IE2	MOTOR IE2 NI/DY/SE2N/SE2R300T

CODE **DP050M, DP050T, DP075M, DP075T, DP100M, DP100T, DP150M, DP150T, DP200M, DP200T, DP300M, DP300T**

BESCHREIBUNG: **PUMPE DENVER**

HINWEISE

POS	CODE	HINWEISE
8	* CE05010033	FÜR: DP050M, DP050T, DP075M, DP075T, DP100M, DP100T, DP150M, DP150T, DP200M, DP200T
8	* CE05030011	FÜR: DP300M, DP300T
9	* CE05010409	FÜR: DP050M, DP050T, DP075M, DP075T, DP100M, DP100T, DP150M, DP150T, DP200M, DP200T
9	* CE05010410	FÜR: DP300M, DP300T
11	* CE05010196	FÜR: DP050M, DP050T
11	* CE05010197	FÜR: DP075M, DP075T
11	* CE05010198	FÜR: DP100M, DP100T
11	* CE05010199	FÜR: DP150M, DP150T
11	* CE05010200	FÜR: DP200M, DP200T
11	* CE05010235	FÜR: DP300M, DP300T
14	* CE05010081	FÜR: DP050M, DP050T, DP075M, DP075T, DP100M, DP100T
14	* CE05010082	FÜR: DP150M, DP150T, DP200M, DP200T, DP300M, DP300T
16	* CE05010047	FÜR: DP050M, DP050T, DP075M, DP075T, DP100M, DP100T
16	* CE05010547	FÜR: DP150M, DP150T
16	* CE05010548	FÜR: DP200M, DP200T, DP300M, DP300T
17	* CE05010242	FÜR: DP050M, DP050T, DP075M, DP075T, DP100M, DP100T
17	* CE05010549	FÜR: DP150M, DP150T
17	* CE05010550	FÜR: DP200M, DP200T, DP300M, DP300T
18	* CE05010248	FÜR: DP050M, DP050T, DP075M, DP075T, DP100M, DP100T, DP200M, DP200T, DP300M, DP300T
18	* CE05010249	FÜR: DP150M, DP150T
19	* CE05010050	FÜR: DP050M, DP050T, DP075M, DP075T, DP100M, DP100T
19	* CE05010246	FÜR: DP150M, DP150T
19	* CE05010247	FÜR: DP200M, DP200T, DP300M, DP300T
20	* CE05011083	FÜR: DP050M, DP075M, DP100M
20	* CE05010842	FÜR: DP150M, DP200M, DP300M
20	* CE05011067	FÜR: DP050T, DP075T, DP100T, DP150T, DP200T, DP300T
21	* CE05010059	FÜR: DP050M, DP050T
21	* CE05010060	FÜR: DP075M, DP075T, DP100M, DP100T
21	* CE05010184	FÜR: DP150M, DP150T, DP300M, DP300T
21	* CE05010260	FÜR: DP200M, DP200T
22	* CE05010057	FÜR: DP050M, DP075M, DP100M
22	* CE05010058	FÜR: DP050T, DP075T, DP100T
22	* CE05010261	FÜR: DP150M, DP200M, DP300M
22	* CE05010190	FÜR: DP150T, DP200T, DP300T
23	* CE05011068	FÜR: DP150M
23	* CE05011069	FÜR: DP200M
23	* CE05011070	FÜR: DP300M
24	* CE05010052	FÜR: DP050M, DP050T, DP075M, DP075T, DP100M, DP100T
24	* CE05010551	FÜR: DP150M, DP150T
24	* CE05010552	FÜR: DP200M, DP200T, DP300M, DP300T
25	* CE05010254	FÜR: DP050M, DP050T, DP075M, DP075T, DP100M, DP100T
25	* CE05010255	FÜR: DP150M, DP150T
25	* CE05010256	FÜR: DP200M, DP200T

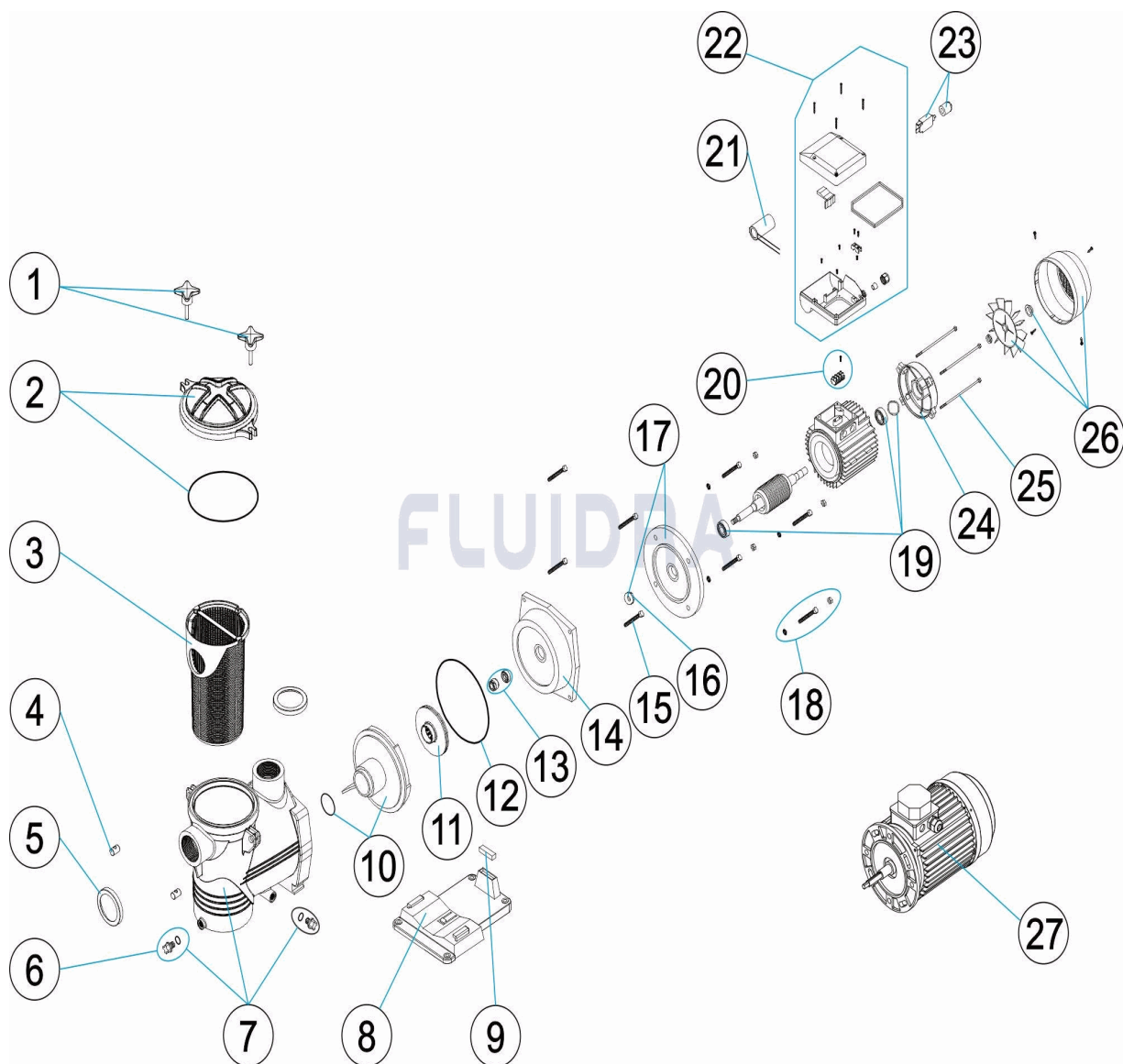
CODE **DP050M, DP050T, DP075M, DP075T, DP100M, DP100T, DP150M, DP150T,
DP200M, DP200T, DP300M, DP300T**

BESCHREIBUNG: **PUMPE DENVER**

25	* CE05010726	FÜR: DP300M, DP300T
26	* CE05010056	FÜR: DP050M, DP050T, DP075M, DP075T, DP100M, DP100T
26	* CE05010258	FÜR: DP150M, DP150T
26	* CE05010259	FÜR: DP200M, DP200T, DP300M, DP300T
27	* SE050MR0300	FÜR: DP050M
27	* SE050TR0300	FÜR: DP050T
27	* SE075MR0300	FÜR: DP075M
27	* SE075TR0300	FÜR: DP075T
27	* SE100MR0300	FÜR: DP100M
27	* SE100TR0300IE2	FÜR: DP100T
27	* SE150MR0300	FÜR: DP150M
27	* SE150TR0300IE2	FÜR: DP150T
27	* SE200MR0300	FÜR: DP200M
27	* SE200TR0300IE2	FÜR: DP200T
27	* SE300MR0300	FÜR: DP300M
27	* SE300TR0300IE2	FÜR: DP300T

CODIGO **DP050M, DP050T, DP075M, DP075T, DP100M, DP100T, DP150M, DP150T, DP200M, DP200T, DP300M, DP300T**

DESCRIÇÃO: **BOMBA DENVER**



PORTUGUES

POS	CODIGO	DESCRIÇÃO	JANTIDADE	POS	CODIGO	DESCRIÇÃO	JANTIDADE
1	CE05010725	FECHO PRÉ-FILTRO		11	* CE05010199	TURBINA 1,5 CV	
2	CE05010542	TAMPA PRÉ-FILTRO		11	* CE05010200	TURBINA 2 CV	
3	CE05010191	CESTO PRÉ-FILTRO		11	* CE05010235	TURBINA 3 CV	
4	CE05010066	PASSADOR BASCULANTE		12	CE05010240	JUNTA CORPO	
5	CE05011151	ARO METÁLICO		13	CE05010118	JUNTA MECÂNICA	
6	CE04121107	TAMPÃO 1/4' VÁLVULA		14	* CE05010081	FLANGE SUPORTE MOTOR 0,5 / 0,75 / 1 HP	
7	CE05010854	CORPO BOMBA DY		14	* CE05010082	FLANGE SUPORTE MOTOR 1,5 / 2 / 3 HP	
8	* CE05010033	PÉ BOMBA		15	CE05011236	PARAFUSOS DA FLANGE	
8	* CE05030011	PÉ BOMBA 3 HP		16	* CE05010047	ALHETA ROMPE ÁGUAS	
9	* CE05010409	SILENT-BLOCK (16X45X13)		16	* CE05010547	ALHETA ROMPE ÁGUAS 1,5 CV	
9	* CE05010410	SILENT-BLOCK (9X45X13)		16	* CE05010548	ALHETA ROMPE ÁGUAS 2-3 CV.	
10	CE05010073	DIFUSOR		17	* CE05010242	TAMPA MOTOR DIANTEIRA 0,5-1 CV.	

*** VEJA A FICHA DE OBSERVAÇÕES**

CODIGO DP050M, DP050T, DP075M, DP075T, DP100M, DP100T, DP150M, DP150T, DP200M, DP200T, DP300M, DP300T

DESCRIÇÃO: BOMBA DENVER

11	* CE05010196	TURBINA 0,5 CV	17	* CE05010549	MANILHA MOTOR 1,5 CV.
11	* CE05010197	TURBINA 0,75 CV	17	* CE05010550	MANILHA MOTOR 2-3 CV.
11	* CE05010198	TURBINA 1 CV	18	* CE05010248	PARAFUSOS FIXAÇÃO MOTOR 0,5-1 CV.
18	* CE05010249	PARAFUSOS FIXAÇÃO MOTOR 1,5 CV.	24	* CE05010552	TAMPA MEMBRANA 2-3 CV
19	* CE05010050	ROLAMENTO MOTOR	25	* CE05010254	CAVILHA MOTOR 0,5-1 CV.
19	* CE05010246	ROLAMIENTOS 1,5 CV	25	* CE05010255	CAVILHA MOTOR 1.5 CV.
19	* CE05010247	ROLAMIENTOS 2-3 CV	25	* CE05010256	CAVILHA MOTOR 2 CV.
20	* CE05011083	REGUA DE LIGAÇÃO	25	* CE05010726	CAVILHA MOTOR 3 CV.
20	* CE05010842	REGUA DE LIGAÇÃO	26	* CE05010056	CONJUNTO VENTILADOR + TAMPA DE 0,75
20	* CE05011067	REGUA DE LIGAÇÃO	26	* CE05010258	TAMPA VENTILADOR + VENTILADOR 1,5 CV
21	* CE05010059	CONDENSADOR 12 UF 0,33 / 0,50 HP.	26	* CE05010259	TAMPA VENTILADOR + VENTILADOR 2-3 CV
21	* CE05010060	CONDENSADOR 20 UF 0,75 / 1 / 1,5 HP.	27	* SE050MR0300	MOTOR NI/DY/SE2N/SE2R050M
21	* CE05010184	CONDENSADOR 35MF 1,5 HP	27	* SE050TR0300	MOTOR NI/DY/SE2N/SE2R050T
21	* CE05010260	CONDENSADOR 45 UF	27	* SE075MR0300	MOTOR NI/DY/SE2N/SE2R075M
22	* CE05010057	CAIXA BORNES II	27	* SE075TR0300	MOTOR NI/DY/SE2N/SE2R075T
22	* CE05010058	CAIXA BORNES III	27	* SE100MR0300	MOTOR NI/DY/SE2N/SE2R100M
22	* CE05010261	CAIXA BORNES 1,5-3 CV. II	27	* SE100TR0300IE2	MOTOR IE2 NI/DY/SE2N/SE2R100T
22	* CE05010190	CAIXA BORNES 1,5-3 CV. III	27	* SE150MR0300	MOTOR NI/DY/SE2N/SE2R150M
23	* CE05011068	INTERRUPTOR 8,5A	27	* SE150TR0300IE2	MOTOR IE2 NI/DY/SE2N/SE2R150T
23	* CE05011069	INTERRUPTOR 10A	27	* SE200MR0300	MOTOR NI/DY/SE2N/SE2R200M
23	* CE05011070	INTERRUPTOR 14A	27	* SE200TR0300IE2	MOTOR IE2 NI/DY/SE2N/SE2R200T
24	* CE05010052	TAMPA TRASEIRA MOTOR 1/2-3/41 HP	27	* SE300MR0300	MOTOR NI/DY/SE2N/SE2R300M
24	* CE05010551	TAMPA MEMBRANA 1,5 CV	27	* SE300TR0300IE2	MOTOR IE2 NI/DY/SE2N/SE2R300T

CODIGO DP050M, DP050T, DP075M, DP075T, DP100M, DP100T, DP150M, DP150T, DP200M, DP200T, DP300M, DP300T

DESCRIÇÃO: BOMBA DENVER

OBSERVAÇÕES

POS	CODIGO	OBSERVAÇÕES
8	* CE05010033	PARA: DP050M, DP050T, DP075M, DP075T, DP100M, DP100T, DP150M, DP150T, DP200M, DP200T
8	* CE05030011	PARA: DP300M, DP300T
9	* CE05010409	PARA: DP050M, DP050T, DP075M, DP075T, DP100M, DP100T, DP150M, DP150T, DP200M, DP200T
9	* CE05010410	PARA: DP300M, DP300T
11	* CE05010196	PARA: DP050M, DP050T
11	* CE05010197	PARA: DP075M, DP075T
11	* CE05010198	PARA: DP100M, DP100T
11	* CE05010199	PARA: DP150M, DP150T
11	* CE05010200	PARA: DP200M, DP200T
11	* CE05010235	PARA: DP300M, DP300T
14	* CE05010081	PARA: DP050M, DP050T, DP075M, DP075T, DP100M, DP100T
14	* CE05010082	PARA: DP150M, DP150T, DP200M, DP200T, DP300M, DP300T
16	* CE05010047	PARA: DP050M, DP050T, DP075M, DP075T, DP100M, DP100T
16	* CE05010547	PARA: DP150M, DP150T
16	* CE05010548	PARA: DP200M, DP200T, DP300M, DP300T
17	* CE05010242	PARA: DP050M, DP050T, DP075M, DP075T, DP100M, DP100T
17	* CE05010549	PARA: DP150M, DP150T
17	* CE05010550	PARA: DP200M, DP200T, DP300M, DP300T
18	* CE05010248	PARA: DP050M, DP050T, DP075M, DP075T, DP100M, DP100T, DP200M, DP200T, DP300M, DP300T
18	* CE05010249	PARA: DP150M, DP150T
19	* CE05010050	PARA: DP050M, DP050T, DP075M, DP075T, DP100M, DP100T
19	* CE05010246	PARA: DP150M, DP150T
19	* CE05010247	PARA: DP200M, DP200T, DP300M, DP300T
20	* CE05011083	PARA: DP050M, DP075M, DP100M
20	* CE05010842	PARA: DP150M, DP200M, DP300M
20	* CE05011067	PARA: DP050T, DP075T, DP100T, DP150T, DP200T, DP300T
21	* CE05010059	PARA: DP050M, DP050T
21	* CE05010060	PARA: DP075M, DP075T, DP100M, DP100T
21	* CE05010184	PARA: DP150M, DP150T, DP300M, DP300T
21	* CE05010260	PARA: DP200M, DP200T
22	* CE05010057	PARA: DP050M, DP075M, DP100M
22	* CE05010058	PARA: DP050T, DP075T, DP100T
22	* CE05010261	PARA: DP150M, DP200M, DP300M
22	* CE05010190	PARA: DP150T, DP200T, DP300T
23	* CE05011068	PARA: DP150M
23	* CE05011069	PARA: DP200M
23	* CE05011070	PARA: DP300M
24	* CE05010052	PARA: DP050M, DP050T, DP075M, DP075T, DP100M, DP100T
24	* CE05010551	PARA: DP150M, DP150T
24	* CE05010552	PARA: DP200M, DP200T, DP300M, DP300T
25	* CE05010254	PARA: DP050M, DP050T, DP075M, DP075T, DP100M, DP100T
25	* CE05010255	PARA: DP150M, DP150T
25	* CE05010256	PARA: DP200M, DP200T

CODIGO DP050M, DP050T, DP075M, DP075T, DP100M, DP100T, DP150M, DP150T,
DP200M, DP200T, DP300M, DP300T

DESCRIÇÃO: BOMBA DENVER

25	* CE05010726	PARA: DP300M, DP300T
26	* CE05010056	PARA: DP050M, DP050T, DP075M, DP075T, DP100M, DP100T
26	* CE05010258	PARA: DP150M, DP150T
26	* CE05010259	PARA: DP200M, DP200T, DP300M, DP300T
27	* SE050MR0300	PARA: DP050M
27	* SE050TR0300	PARA: DP050T
27	* SE075MR0300	PARA: DP075M
27	* SE075TR0300	PARA: DP075T
27	* SE100MR0300	PARA: DP100M
27	* SE100TR0300IE2	PARA: DP100T
27	* SE150MR0300	PARA: DP150M
27	* SE150TR0300IE2	PARA: DP150T
27	* SE200MR0300	PARA: DP200M
27	* SE200TR0300IE2	PARA: DP200T
27	* SE300MR0300	PARA: DP300M
27	* SE300TR0300IE2	PARA: DP300T