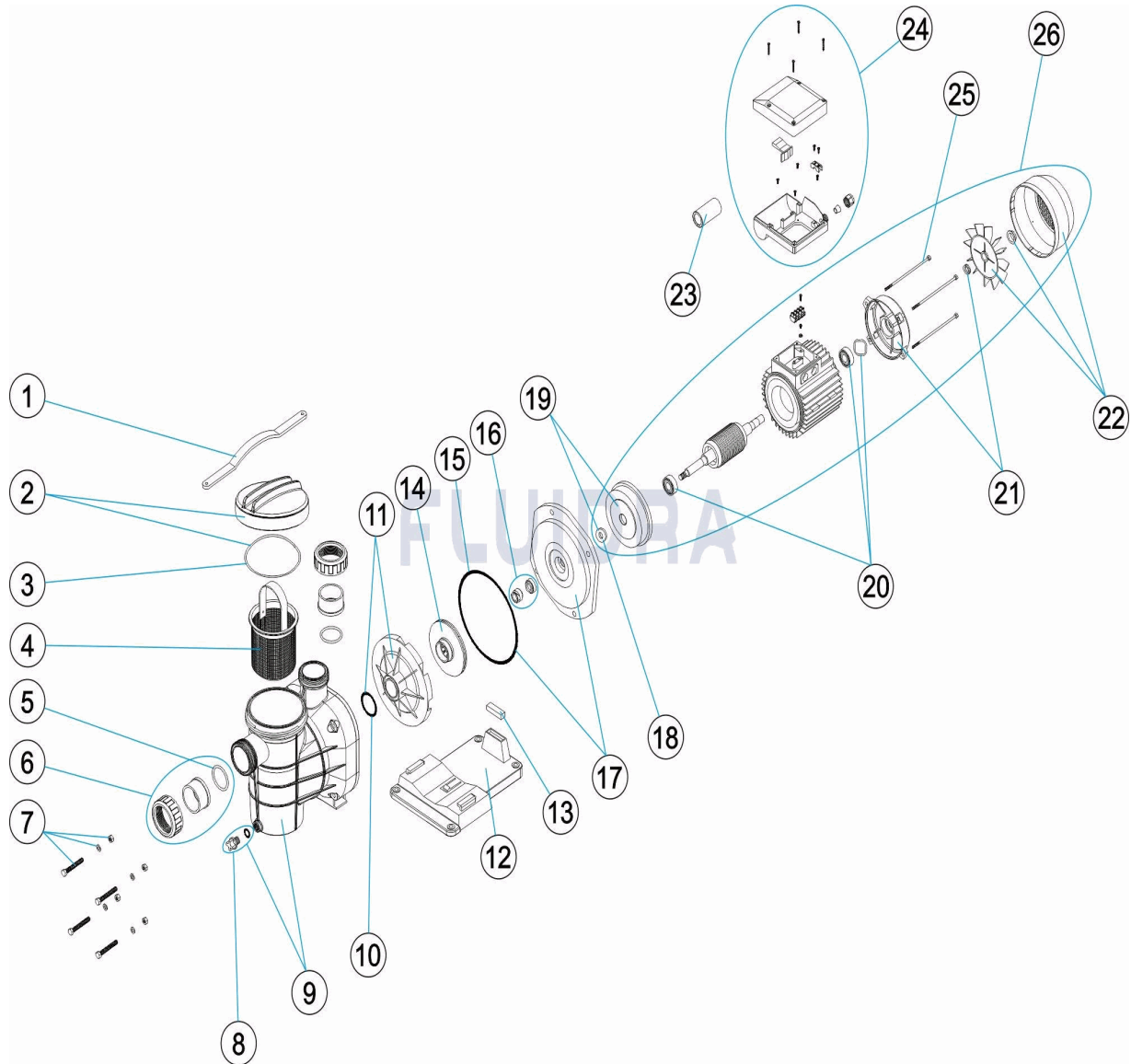


CODIGO

LP033M, LP033M-IF, LP050M, LP050M-IF, LP050T, LP050T-IF, LP075M,
 LP075M-IF, LP075T, LP075T-IF, LP100M, LP100M-IF, LP100T, LP100T-IF,
 LP125M, LP125M-IF, LP125T, LP125T-IF

 DESCRIPCION: **BOMBA LYON**

ESPAÑOL

POS	CODIGO	DESCRIPCION	CANTIDAD	POS	CODIGO	DESCRIPCION	CANTIDAD
1	CE05010025	LLAVE TAPA PREFILTRO		14	* CE05010038	TURBINA 0,33 CV	
2	CE05010856	CIERRE PREFILTRO		14	* CE05010039	TURBINA ½ CV. II III	
3	CE05010437	JUNTA TORICA D. 118X4		14	* CE05010040	TURBINA ¾ CV. II III	
4	CE05010028	CESTO PREFILTRO		14	* CE05010041	TURBINA 1 CV. II III	
5	CE05010031	JUNTA TORICA		14	* CE05010042	TURBINA 1 ½ CV. II III	
6	* CE05010030	ACCESORIOS ENLACE 1 ½"		15	CE05010440	JUNTA TORICA D. 180X5	
6	* CE05011027	ACCESORIOS ENLACE 1 ½"		16	CE05010118	JUNTA MECÁNICA	
7	CE05010029	TORNILLOS CUERPO BOMBA		17	* CE05010045	TAPA CUERPO BOMBA 0,33 / 0,50 CV	
8	CE04121107	TAPON ¼ VALVULA		17	* CE05010046	TAPA CUERPO BOMBA 0,75 / 1 / 1,5 CV	
9	CE05010032	CUERPO PREFILTRO		18	CE05010047	ARANDELA ROMPE AGUAS	
10	CE05010439	JUNTA TORICA D. 38X5		19	* CE05010048	BRIDA MOTOR 0,33 / 0,50 CV	

* NOTA OBSERVACIONES

CODIGO LP033M, LP033M-IF, LP050M, LP050M-IF, LP050T, LP050T-IF, LP075M, LP075M-IF, LP075T, LP075T-IF, LP100M, LP100M-IF, LP100T, LP100T-IF, LP125M, LP125M-IF, LP125T, LP125T-IF

DESCRIPCION: BOMBA LYON

11	CE05010411	DIFUSOR	19	* CE05010049	BRIDA MOTOR 0,75 / 1 / 1,5 CV
12	CE05010033	PIE BOMBA	20	CE05010050	RODAMIENTO MOTOR
13	* CE05010409	SILENT-BLOCK (16X45X13)	21	* CE05010051	TAPA TRASERA MOTOR 0,33 / 0,50HP
13	* CE05010410	SILENT-BLOCK (9X45X13)	21	* CE05010052	TAPA TRASERA MOTOR ½-¾1 HP
22	* CE05010055	CJTO. VENTILADOR + VTAPA 0,33 / 0,50 CV	26	* SA050MR0300	MOTOR SA050M
22	* CE05010056	CJTO. VENTILADOR + VTAPA 0,75 / 1 / 1,5 C	26	* SA050TR0300	MOTOR SA050T
23	* CE05010059	CONDENSADOR 12MF. 0,33 / 0,50 CV.	26	* SA075MR0300	MOTOR SA075M
23	* CE05010060	CONDENSADOR 20MF. 0,75 / 1 / 1,5 CV.	26	* SA075TR0300	MOTOR SA075T
24	* CE05010057	CAJA CONEXIONES COMPLETA II	26	* SA100MR0300	MOTOR SA100M
24	* CE05010058	CAJA CONEXIONES COMPLETA III	26	* SA100TR0300IE2	MOTOR IE2 SA100T
25	* CE05010053	TIRANTE MOTOR 0,33 / 0,50 HP	26	* SA125MR0300	MOTOR SA125M
25	* CE05010054	TIRANTE MOTOR 0,75 / 1 / 1,5 HP	26	* SA125TR0300	MOTOR SA125T
26	* SA033MR0300	MOTOR SA033M			

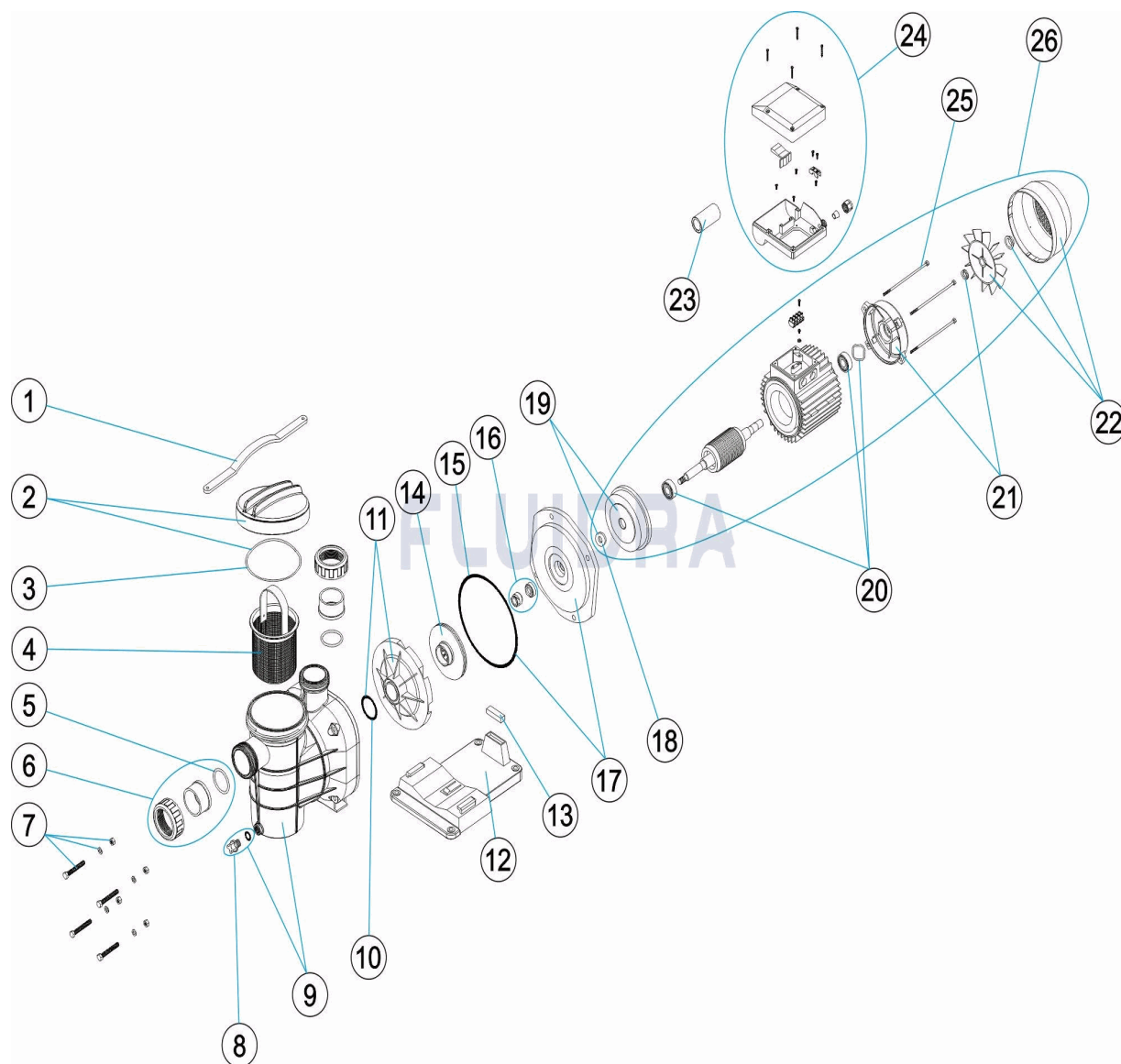
CODIGO
LP033M, LP033M-IF, LP050M, LP050M-IF, LP050T, LP050T-IF, LP075M, LP075M-IF, LP075T, LP075T-IF, LP100M, LP100M-IF, LP100T, LP100T-IF, LP125M, LP125M-IF, LP125T, LP125T-IF
DESCRIPCION: BOMBA LYON

OBSERVACIONES

POS	CODIGO	OBSERVACIONES
6	*CE05010030	PARA: LP033M, LP050M, LP050T, LP075M, LP075T, LP100M, LP100T, LP125M, LP125T METRIC
6	*CE05011027	PARA: LP033M-IF, LP050M-IF, LP050T-IF, LP075M-IF, LP075T-IF, LP100M-IF, LP100T-IF, LP125M-IF, LP125T-IF IMPERIAL
13	*CE05010409	PARA: LP033M, LP033M-IF, LP050M, LP050M-IF, LP050T, LP050T-IF
13	*CE05010410	PARA: LP075M, LP075M-IF, LP075T, LP075T-IF, LP100M, LP100M-IF, LP100T, LP100T-IF, LP125M, LP125M-IF, LP125T, LP125T-IF
14	*CE05010038	PARA: LP033M, LP033M-IF
14	*CE05010039	PARA: LP050M, LP050M-IF, LP050T, LP050T-IF
14	*CE05010040	PARA: LP075M, LP075M-IF, LP075T, LP075T-IF
14	*CE05010041	PARA: LP100M, LP100M-IF, LP100T, LP100T-IF
14	*CE05010042	PARA: LP125M, LP125M-IF, LP125T, LP125T-IF
17	*CE05010045	PARA: LP033M, LP033M-IF, LP050M, LP050M-IF, LP050T, LP050T-IF
17	*CE05010046	PARA: LP075M, LP075M-IF, LP075T, LP075T-IF, LP100M, LP100M-IF, LP100T, LP100T-IF, LP125M, LP125M-IF, LP125T, LP125T-IF
19	*CE05010048	PARA: LP033M, LP033M-IF, LP050M, LP050M-IF, LP050T, LP050T-IF
19	*CE05010049	PARA: LP075M, LP075M-IF, LP075T, LP075T-IF, LP100M, LP100M-IF, LP100T, LP100T-IF, LP125M, LP125M-IF, LP125T, LP125T-IF
21	*CE05010051	PARA: LP033M, LP033M-IF, LP050M, LP050M-IF, LP050T, LP050T-IF
21	*CE05010052	PARA: LP075M, LP075M-IF, LP075T, LP075T-IF, LP100M, LP100M-IF, LP100T, LP100T-IF, LP125M, LP125M-IF, LP125T, LP125T-IF
22	*CE05010055	PARA: LP033M, LP033M-IF, LP050M, LP050M-IF, LP050T, LP050T-IF
22	*CE05010056	PARA: LP075M, LP075M-IF, LP075T, LP075T-IF, LP100M, LP100M-IF, LP100T, LP100T-IF, LP125M, LP125M-IF, LP125T, LP125T-IF
23	*CE05010059	PARA: LP033M, LP033M-IF, LP050M, LP050M-IF
23	*CE05010060	PARA: LP075M, LP075M-IF, LP100M, LP100M-IF, LP125M, LP125M-IF
24	*CE05010057	PARA: LP033M, LP033M-IF, LP050M, LP050M-IF, LP075M, LP075M-IF, LP100M, LP100M-IF, LP125M, LP125M-IF
24	*CE05010058	PARA: LP050T, LP050T-IF, LP075T, LP075T-IF, LP100T, LP100T-IF, LP125T, LP125T-IF
25	*CE05010053	PARA: LP033M, LP033M-IF, LP050M, LP050M-IF, LP050T, LP050T-IF
25	*CE05010054	PARA: LP075M, LP075M-IF, LP075T, LP075T-IF, LP100M, LP100M-IF, LP100T, LP100T-IF, LP125M, LP125M-IF, LP125T, LP125T-IF
26	*SA033MR0300	PARA: LP033M, LP033M-IF
26	*SA050MR0300	PARA: LP050M, LP050M-IF
26	*SA050TR0300	PARA: LP050T, LP050T-IF
26	*SA075MR0300	PARA: LP075M, LP075M-IF
26	*SA075TR0300	PARA: LP075T, LP075T-IF
26	*SA100MR0300	PARA: LP100M, LP100M-IF
26	*SA100TR0300IE2	PARA: LP100T, LP100T-IF
26	*SA125MR0300	PARA: LP125M, LP125M-IF
26	*SA125TR0300	PARA: LP125T, LP125T-IF

CODE **LP033M, LP033M-IF, LP050M, LP050M-IF, LP050T, LP050T-IF, LP075M, LP075M-IF, LP075T, LP075T-IF, LP100M, LP100M-IF, LP100T, LP100T-IF, LP125M, LP125M-IF, LP125T, LP125T-IF**

DESCRIPTION: **POMPE LYON**



FRANCAIS

POS	CODE	DESCRIPTION	QUANTITE	POS	CODE	DESCRIPTION	QUANTITE
1	CE05010025	CLE COUVERCLE		14	* CE05010038	TURBINE 0,33 CV	
2	CE05010856	FERMETURE PREFILTRE		14	* CE05010039	TURBINE 1/2 CV. II III	
3	CE05010437	JOINT TORIQUE D 118X4		14	* CE05010040	TURBINE 3/4 CV. II III	
4	CE05010028	PANIER PRÉFILTRE		14	* CE05010041	TURBINE 1 CV. II III	
5	CE05010031	JOINT TORIQUE		14	* CE05010042	TURBINE 1 1/2 CV. II III	
6	* CE05010030	RACCORDS UNION 1 1/2"		15	CE05010440	JOINT TORIQUE D 180X5	
6	* CE05011027	RACCORDS UNION 1 1/2"		16	CE05010118	GARNITURE MÉCANIQUE	
7	CE05010029	VIS CORPS POMPE		17	* CE05010045	COUVERCLE CORPS DE POMPE 0,33 / 0,50	
8	CE04121107	BOUCHON 1/4' DE VANNE		17	* CE05010046	COUVERCLE CORPS DE POMPE 0,75 / 1 / 1	
9	CE05010032	CORPS PREFILTRE		18	CE05010047	RONDELLE BRISE EAU	
10	CE05010439	JOINT TORIQUE D 38X5		19	* CE05010048	FLASQUE ACCOUP. MOTEUR 0,33 / 0,50 CV	

* VOIR FICHE D'OBSERVATIONS

CODE **LP033M, LP033M-IF, LP050M, LP050M-IF, LP050T, LP050T-IF, LP075M, LP075M-IF, LP075T, LP075T-IF, LP100M, LP100M-IF, LP100T, LP100T-IF, LP125M, LP125M-IF, LP125T, LP125T-IF**

DESCRIPTION: POMPE LYON

11	CE05010411	DIFFUSEUR	19	* CE05010049	FLASQUE ACCOUP. MOTEUR 0,75 / 1 / 1,5 C
12	CE05010033	SOCLE POMPE	20	CE05010050	ROULEMENT MOTEUR
13	* CE05010409	SILENT-BLOCK (16X45X13)	21	* CE05010051	COUVERCLE ARRIÈRE MOTEUR 0,33 / 0,50
13	* CE05010410	SILENT-BLOCK (9X45X13)	21	* CE05010052	COUVERCLE ARRIÈRE MOTEUR 1/2-3/41 H
22	* CE05010055	ENSEMBLE VENTILATEUR + COUVERCLE I	26	* SA050MR0300	MOTEUR SA050M
22	* CE05010056	ENSEMBLE VENTILATEUR + COUVERCLE I	26	* SA050TR0300	MOTEUR SA050T
23	* CE05010059	CONDENSATEUR 12 UF 0,33 / 0,50 HP.	26	* SA075MR0300	MOTEUR SA075M
23	* CE05010060	CONDENSATEUR 20 UF 0,75 / 1 / 1,5 HP.	26	* SA075TR0300	MOTEUR SA075T
24	* CE05010057	BOTILLER DE CONNECTIONS II	26	* SA100MR0300	MOTEUR SA100M
24	* CE05010058	BOTILLER DE CONNECTIONS III	26	* SA100TR0300IE2	MOTEUR IE2 SA100T
25	* CE05010053	COLLIER DE MAINTIEN EXTÉRIEUR DE TU	26	* SA125MR0300	MOTEUR SA125M
25	* CE05010054	COLLIER DE MAINTIEN EXTÉRIEUR DE TU	26	* SA125TR0300	MOTEUR SA125T
26	* SA033MR0300	MOTEUR SA033M			

CODE
LP033M, LP033M-IF, LP050M, LP050M-IF, LP050T, LP050T-IF, LP075M, LP075M-IF, LP075T, LP075T-IF, LP100M, LP100M-IF, LP100T, LP100T-IF, LP125M, LP125M-IF, LP125T, LP125T-IF
DESCRIPTION: POMPE LYON

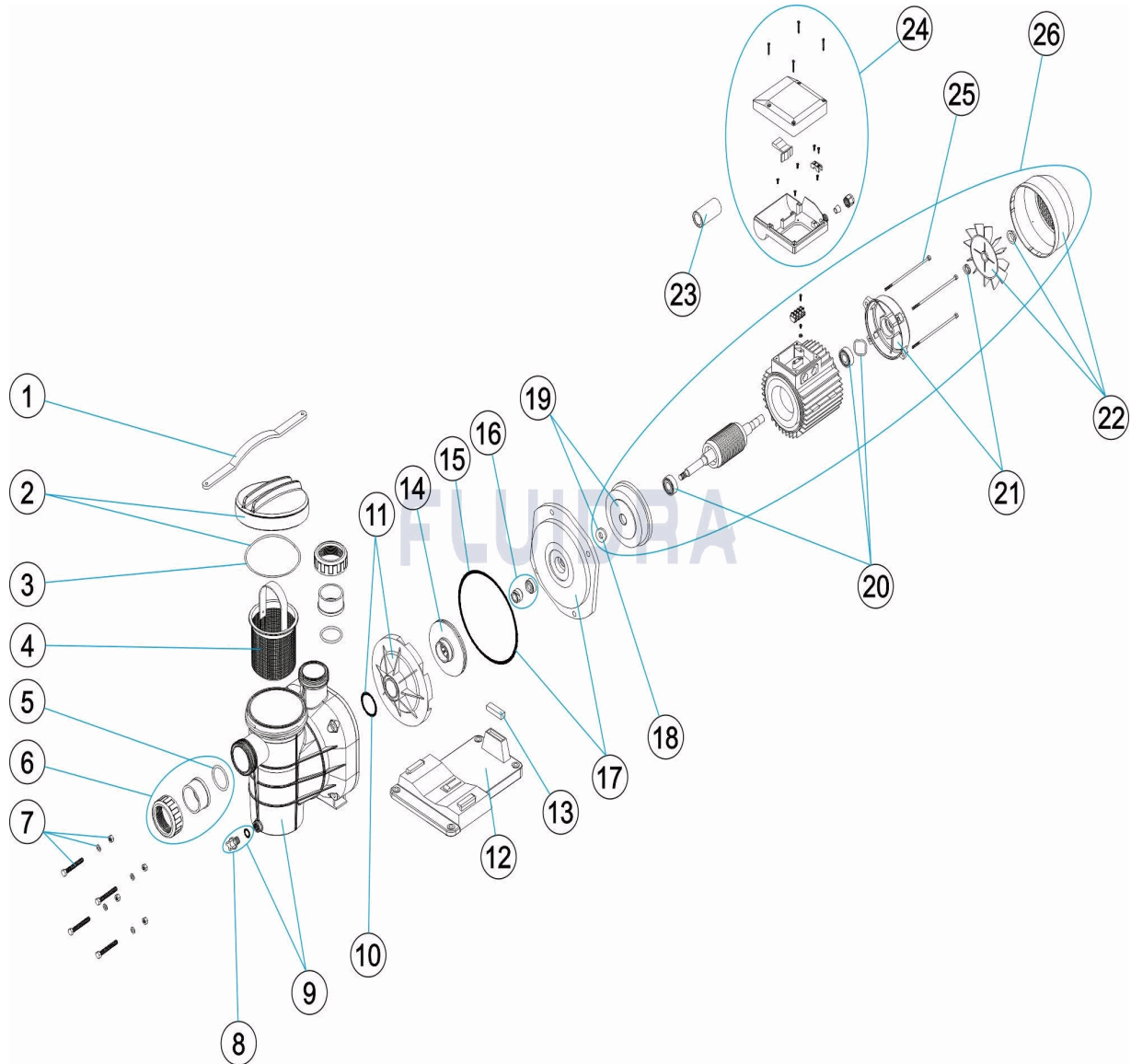
OBSERVATIONS

POS	CODE	OBSERVATIONS
6	*CE05010030	POUR: LP033M, LP050M, LP050T, LP075M, LP075T, LP100M, LP100T, LP125M, LP125T METRIC
6	*CE05011027	POUR: LP033M-IF, LP050M-IF, LP050T-IF, LP075M-IF, LP075T-IF, LP100M-IF, LP100T-IF, LP125M-IF, LP125T-IF IMPERIAL
13	*CE05010409	POUR: LP033M, LP033M-IF, LP050M, LP050M-IF, LP050T, LP050T-IF
13	*CE05010410	POUR: LP075M, LP075M-IF, LP075T, LP075T-IF, LP100M, LP100M-IF, LP100T, LP100T-IF, LP125M, LP125M-IF, LP125T, LP125T-IF
14	*CE05010038	POUR: LP033M, LP033M-IF
14	*CE05010039	POUR: LP050M, LP050M-IF, LP050T, LP050T-IF
14	*CE05010040	POUR: LP075M, LP075M-IF, LP075T, LP075T-IF
14	*CE05010041	POUR: LP100M, LP100M-IF, LP100T, LP100T-IF
14	*CE05010042	POUR: LP125M, LP125M-IF, LP125T, LP125T-IF
17	*CE05010045	POUR: LP033M, LP033M-IF, LP050M, LP050M-IF, LP050T, LP050T-IF
17	*CE05010046	POUR: LP075M, LP075M-IF, LP075T, LP075T-IF, LP100M, LP100M-IF, LP100T, LP100T-IF, LP125M, LP125M-IF, LP125T, LP125T-IF
19	*CE05010048	POUR: LP033M, LP033M-IF, LP050M, LP050M-IF, LP050T, LP050T-IF
19	*CE05010049	POUR: LP075M, LP075M-IF, LP075T, LP075T-IF, LP100M, LP100M-IF, LP100T, LP100T-IF, LP125M, LP125M-IF, LP125T, LP125T-IF
21	*CE05010051	POUR: LP033M, LP033M-IF, LP050M, LP050M-IF, LP050T, LP050T-IF
21	*CE05010052	POUR: LP075M, LP075M-IF, LP075T, LP075T-IF, LP100M, LP100M-IF, LP100T, LP100T-IF, LP125M, LP125M-IF, LP125T, LP125T-IF
22	*CE05010055	POUR: LP033M, LP033M-IF, LP050M, LP050M-IF, LP050T, LP050T-IF
22	*CE05010056	POUR: LP075M, LP075M-IF, LP075T, LP075T-IF, LP100M, LP100M-IF, LP100T, LP100T-IF, LP125M, LP125M-IF, LP125T, LP125T-IF
23	*CE05010059	POUR: LP033M, LP033M-IF, LP050M, LP050M-IF
23	*CE05010060	POUR: LP075M, LP075M-IF, LP100M, LP100M-IF, LP125M, LP125M-IF
24	*CE05010057	POUR: LP033M, LP033M-IF, LP050M, LP050M-IF, LP075M, LP075M-IF, LP100M, LP100M-IF, LP125M, LP125M-IF
24	*CE05010058	POUR: LP050T, LP050T-IF, LP075T, LP075T-IF, LP100T, LP100T-IF, LP125T, LP125T-IF
25	*CE05010053	POUR: LP033M, LP033M-IF, LP050M, LP050M-IF, LP050T, LP050T-IF
25	*CE05010054	POUR: LP075M, LP075M-IF, LP075T, LP075T-IF, LP100M, LP100M-IF, LP100T, LP100T-IF, LP125M, LP125M-IF, LP125T, LP125T-IF
26	*SA033MR0300	POUR: LP033M, LP033M-IF
26	*SA050MR0300	POUR: LP050M, LP050M-IF
26	*SA050TR0300	POUR: LP050T, LP050T-IF
26	*SA075MR0300	POUR: LP075M, LP075M-IF
26	*SA075TR0300	POUR: LP075T, LP075T-IF
26	*SA100MR0300	POUR: LP100M, LP100M-IF
26	*SA100TR0300IE2	POUR: LP100T, LP100T-IF
26	*SA125MR0300	POUR: LP125M, LP125M-IF
26	*SA125TR0300	POUR: LP125T, LP125T-IF

CODE

LP033M, LP033M-IF, LP050M, LP050M-IF, LP050T, LP050T-IF, LP075M,
 LP075M-IF, LP075T, LP075T-IF, LP100M, LP100M-IF, LP100T, LP100T-IF,
 LP125M, LP125M-IF, LP125T, LP125T-IF

DESCRIPTION: LYON PUMP


ENGLISH

POS	CODE	DESCRIPTION	QUANTITY	POS	CODE	DESCRIPTION	QUANTITY
1	CE05010025	LID KEY		14	* CE05010038	IMPELLER 0,33 CV	
2	CE05010856	PRE-FILTER CLOSURE		14	* CE05010039	IMPELLER 1/2 CV. II III	
3	CE05010437	O' RING D 118X4		14	* CE05010040	IMPELLER 3/4 CV. II III	
4	CE05010028	PRE-FILTER BASKET		14	* CE05010041	IMPELLER 1 CV. II III	
5	CE05010031	O' RING		14	* CE05010042	IMPELLER 1 1/2 CV. II III	
6	* CE05010030	UNION FITTINGS 1 1/2"		15	CE05010440	O' RING D 180X5	
6	* CE05011027	UNION FITTINGS 1 1/2"		16	CE05010118	MECHANICAL SEAL	
7	CE05010029	SCREWS FOR PUMP BODY		17	* CE05010045	0,33 / 0,50 CV BLACK PLATE	
8	CE04121107	PLUG 1/4"		17	* CE05010046	0,75 / 1 / 1,5 CV BLACK PLATE	
9	CE05010032	PREFILTER BODY		18	CE05010047	BREAKWATER WASHER	
10	CE05010439	O' RING D 38X5		19	* CE05010048	MOTOR CLAMP 0,33 / 0,50 CV	

* SEE OBSERVATIONS SHEET

CODE **LP033M, LP033M-IF, LP050M, LP050M-IF, LP050T, LP050T-IF, LP075M, LP075M-IF, LP075T, LP075T-IF, LP100M, LP100M-IF, LP100T, LP100T-IF, LP125M, LP125M-IF, LP125T, LP125T-IF**

DESCRIPTION: **LYON PUMP**

11	CE05010411	DIFFUSER	19	* CE05010049	MOTOR CLAMP 0,75 / 1 / 1,5 CV
12	CE05010033	PUMP BASE	20	CE05010050	MOTOR BEARINGS
13	* CE05010409	SILENTBLOCK (16X45X13)	21	* CE05010051	REAR MOTOR COVER 0,33 / 0,50 HP
13	* CE05010410	SILENTBLOCK (9X45X13)	21	* CE05010052	REAR MOTOR COVER 1/2-3/41 HP
22	* CE05010055	FAN + COVER ASSEMBLY FOR 0,33 / 0,50 f	26	* SA050MR0300	MOTOR SA050M
22	* CE05010056	FAN + COVER ASSEMBLY FOR 0,75 / 1 / 1,5	26	* SA050TR0300	MOTOR SA050T
23	* CE05010059	CONDENSER 12 UF 0,33 / 0,50 HP.	26	* SA075MR0300	MOTOR SA075M
23	* CE05010060	CONDENSER 20 UF 0,75 / 1 / 1,5 HP.	26	* SA075TR0300	MOTOR SA075T
24	* CE05010057	TERMINAL BOX II	26	* SA100MR0300	MOTOR SA100M
24	* CE05010058	TERMINAL BOX III	26	* SA100TR0300IE2	MOTOR IE2 SA100T
25	* CE05010053	MOTOR SUPPORT 0,33 / 0,50 HP	26	* SA125MR0300	MOTOR SA125M
25	* CE05010054	MOTOR SUPPORT 0,75 / 1 / 1,5 HP	26	* SA125TR0300	MOTOR SA125T
26	* SA033MR0300	MOTOR SA033M			

CODE **LP033M, LP033M-IF, LP050M, LP050M-IF, LP050T, LP050T-IF, LP075M, LP075M-IF, LP075T, LP075T-IF, LP100M, LP100M-IF, LP100T, LP100T-IF, LP125M, LP125M-IF, LP125T, LP125T-IF**

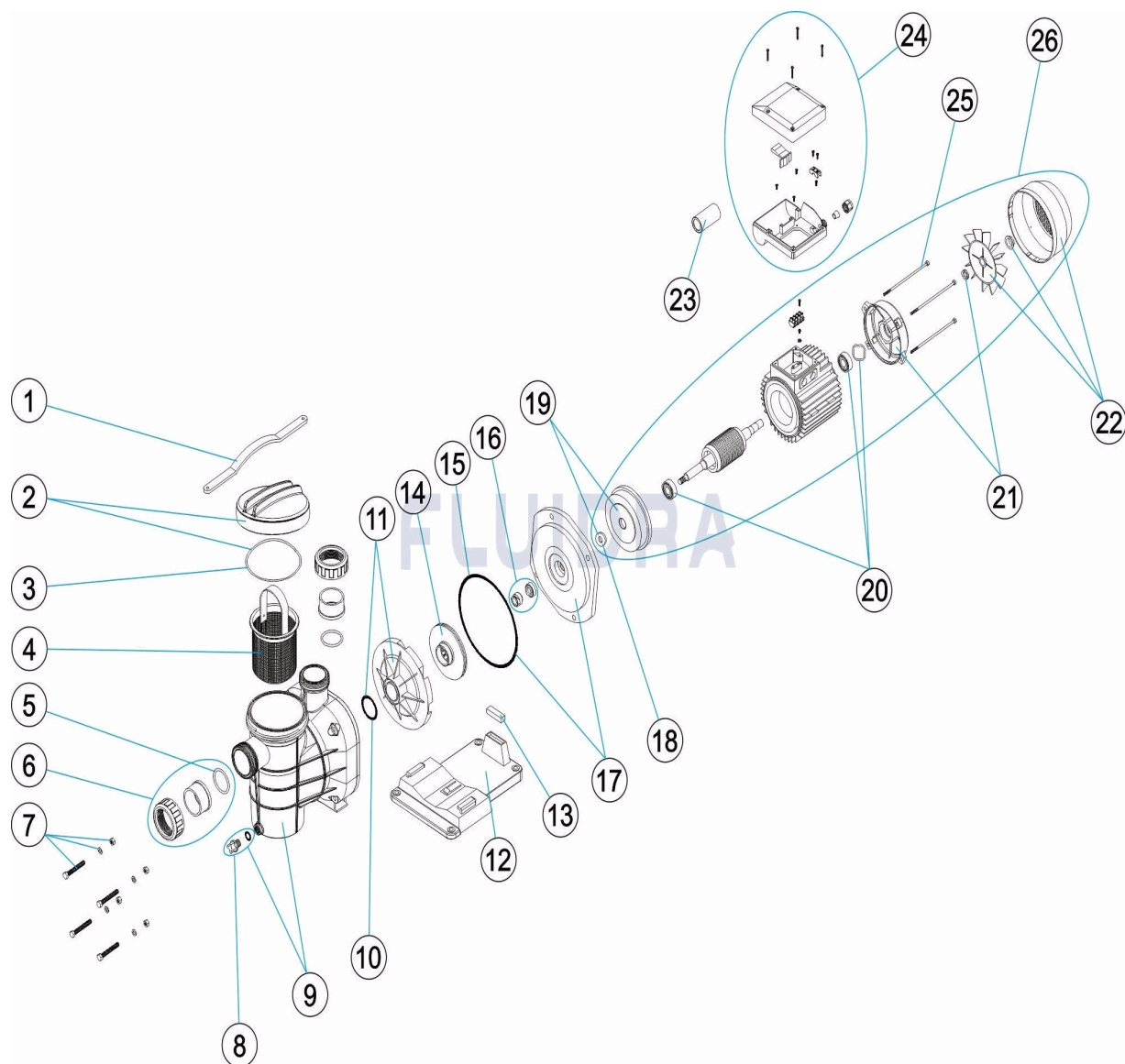
DESCRIPTION: **LYON PUMP**

OBSERVATIONS

POS	CODE	OBSERVATIONS
6	*CE05010030	FOR: LP033M, LP050M, LP050T, LP075M, LP075T, LP100M, LP100T, LP125M, LP125T METRIC
6	*CE05011027	FOR: LP033M-IF, LP050M-IF, LP050T-IF, LP075M-IF, LP075T-IF, LP100M-IF, LP100T-IF, LP125M-IF, LP125T-IF IMPERIAL
13	*CE05010409	FOR: LP033M, LP033M-IF, LP050M, LP050M-IF, LP050T, LP050T-IF
13	*CE05010410	FOR: LP075M, LP075M-IF, LP075T, LP075T-IF, LP100M, LP100M-IF, LP100T, LP100T-IF, LP125M, LP125M-IF, LP125T, LP125T-IF
14	*CE05010038	FOR: LP033M, LP033M-IF
14	*CE05010039	FOR: LP050M, LP050M-IF, LP050T, LP050T-IF
14	*CE05010040	FOR: LP075M, LP075M-IF, LP075T, LP075T-IF
14	*CE05010041	FOR: LP100M, LP100M-IF, LP100T, LP100T-IF
14	*CE05010042	FOR: LP125M, LP125M-IF, LP125T, LP125T-IF
17	*CE05010045	FOR: LP033M, LP033M-IF, LP050M, LP050M-IF, LP050T, LP050T-IF
17	*CE05010046	FOR: LP075M, LP075M-IF, LP075T, LP075T-IF, LP100M, LP100M-IF, LP100T, LP100T-IF, LP125M, LP125M-IF, LP125T, LP125T-IF
19	*CE05010048	FOR: LP033M, LP033M-IF, LP050M, LP050M-IF, LP050T, LP050T-IF
19	*CE05010049	FOR: LP075M, LP075M-IF, LP075T, LP075T-IF, LP100M, LP100M-IF, LP100T, LP100T-IF, LP125M, LP125M-IF, LP125T, LP125T-IF
21	*CE05010051	FOR: LP033M, LP033M-IF, LP050M, LP050M-IF, LP050T, LP050T-IF
21	*CE05010052	FOR: LP075M, LP075M-IF, LP075T, LP075T-IF, LP100M, LP100M-IF, LP100T, LP100T-IF, LP125M, LP125M-IF, LP125T, LP125T-IF
22	*CE05010055	FOR: LP033M, LP033M-IF, LP050M, LP050M-IF, LP050T, LP050T-IF
22	*CE05010056	FOR: LP075M, LP075M-IF, LP075T, LP075T-IF, LP100M, LP100M-IF, LP100T, LP100T-IF, LP125M, LP125M-IF, LP125T, LP125T-IF
23	*CE05010059	FOR: LP033M, LP033M-IF, LP050M, LP050M-IF
23	*CE05010060	FOR: LP075M, LP075M-IF, LP100M, LP100M-IF, LP125M, LP125M-IF
24	*CE05010057	FOR: LP033M, LP033M-IF, LP050M, LP050M-IF, LP075M, LP075M-IF, LP100M, LP100M-IF, LP125M, LP125M-IF
24	*CE05010058	FOR: LP050T, LP050T-IF, LP075T, LP075T-IF, LP100T, LP100T-IF, LP125T, LP125T-IF
25	*CE05010053	FOR: LP033M, LP033M-IF, LP050M, LP050M-IF, LP050T, LP050T-IF
25	*CE05010054	FOR: LP075M, LP075M-IF, LP075T, LP075T-IF, LP100M, LP100M-IF, LP100T, LP100T-IF, LP125M, LP125M-IF, LP125T, LP125T-IF
26	*SA033MR0300	FOR: LP033M, LP033M-IF
26	*SA050MR0300	FOR: LP050M, LP050M-IF
26	*SA050TR0300	FOR: LP050T, LP050T-IF
26	*SA075MR0300	FOR: LP075M, LP075M-IF
26	*SA075TR0300	FOR: LP075T, LP075T-IF
26	*SA100MR0300	FOR: LP100M, LP100M-IF
26	*SA100TR0300IE2	FOR: LP100T, LP100T-IF
26	*SA125MR0300	FOR: LP125M, LP125M-IF
26	*SA125TR0300	FOR: LP125T, LP125T-IF

CODICE **LP033M, LP033M-IF, LP050M, LP050M-IF, LP050T, LP050T-IF, LP075M, LP075M-IF, LP075T, LP075T-IF, LP100M, LP100M-IF, LP100T, LP100T-IF, LP125M, LP125M-IF, LP125T, LP125T-IF**

DESCRIZIONE: **POMPA LYON**



ITALIANO

POS	CODICE	DESCRIZIONE	QUANTITA'	POS	CODICE	DESCRIZIONE	QUANTITA'
1	CE05010025	CHIAVE COPERCHIO		14	* CE05010038	GIRANTE 0,33 CV	
2	CE05010856	CHIUSURA PREFILTRO		14	* CE05010039	GIRANTE 1/2 CV. II III	
3	CE05010437	O-RING D 118X4		14	* CE05010040	GIRANTE 3/4 CV. II III	
4	CE05010028	CESTO PREFILTRO		14	* CE05010041	GIRANTE 1 CV. II III	
5	CE05010031	O-RING		14	* CE05010042	GIRANTE 1 1/2 CV. II III	
6	* CE05010030	MANICOTTI DI UNIONE 1 1/2"		15	CE05010440	O-RING D 180X5	
6	* CE05011027	MANICOTTI DI UNIONE 1 1/2"		16	CE05010118	GUARNIZIONE MECCANICA	
7	CE05010029	VITI DEL CORPO POMPA		17	* CE05010045	COPERCHIO CORPO POMPA 0,33 / 0,50 CV	
8	CE04121107	COPERCHIO 1/4' VALVOLA		17	* CE05010046	COPERCHIO CORPO POMPA 0,75 / 1 / 1,5 C	
9	CE05010032	CORPO PREFILTRO		18	CE05010047	RONDELLA	
10	CE05010439	O-RING D 38X5		19	* CE05010048	FLANGIA MOTORE 0,33 / 0,50 CV	

CODICE **LP033M, LP033M-IF, LP050M, LP050M-IF, LP050T, LP050T-IF, LP075M, LP075M-IF, LP075T, LP075T-IF, LP100M, LP100M-IF, LP100T, LP100T-IF, LP125M, LP125M-IF, LP125T, LP125T-IF**

DESCRIZIONE: POMPA LYON

11	CE05010411	DIFFUSORE	19	* CE05010049	FLANGIA MOTORE 0,75 / 1 / 1,5 CV
12	CE05010033	BASAMENTO POMPA	20	CE05010050	CUSCINETTO MOTORE
13	* CE05010409	SILENTBLOC (16X45X13)	21	* CE05010051	COPERCHIO POSTERIORE MOTORE 0,33 /
13	* CE05010410	SILENTBLOC (9X45X13)	21	* CE05010052	COPERCHIO POSTERIORE MOTORE 1/2-3/
22	* CE05010055	GRUPPO VENTILATORE + COPERCHIO 0,3	26	* SA050MR0300	MOTORE SA050M
22	* CE05010056	GRUPPO VENTILATORE + COPERCHIO 0,7	26	* SA050TR0300	MOTORE SA050T
23	* CE05010059	CONDENSATORE 12 UF 0,33 / 0,50 HP.	26	* SA075MR0300	MOTORE SA075M
23	* CE05010060	CONDENSATORE 20 UF 0,75 / 1 / 1,5 HP.	26	* SA075TR0300	MOTORE SA075T
24	* CE05010057	COPERCHIO MORSETTIERA II	26	* SA100MR0300	MOTORE SA100M
24	* CE05010058	COPERCHIO MORSETTIERA III	26	* SA100TR0300IE2	MOTORE IE2 SA100T
25	* CE05010053	TIRANTE BRACCIO DOCCIA 0,33 / 0,50 HP	26	* SA125MR0300	MOTORE SA125M
25	* CE05010054	TIRANTE BRACCIO DOCCIA 0,75 / 1 / 1,5 HP	26	* SA125TR0300	MOTORE SA125T
26	* SA033MR0300	MOTORE SA033M			

CODICE **LP033M, LP033M-IF, LP050M, LP050M-IF, LP050T, LP050T-IF, LP075M, LP075M-IF, LP075T, LP075T-IF, LP100M, LP100M-IF, LP100T, LP100T-IF, LP125M, LP125M-IF, LP125T, LP125T-IF**

DESCRIZIONE: POMPA LYON

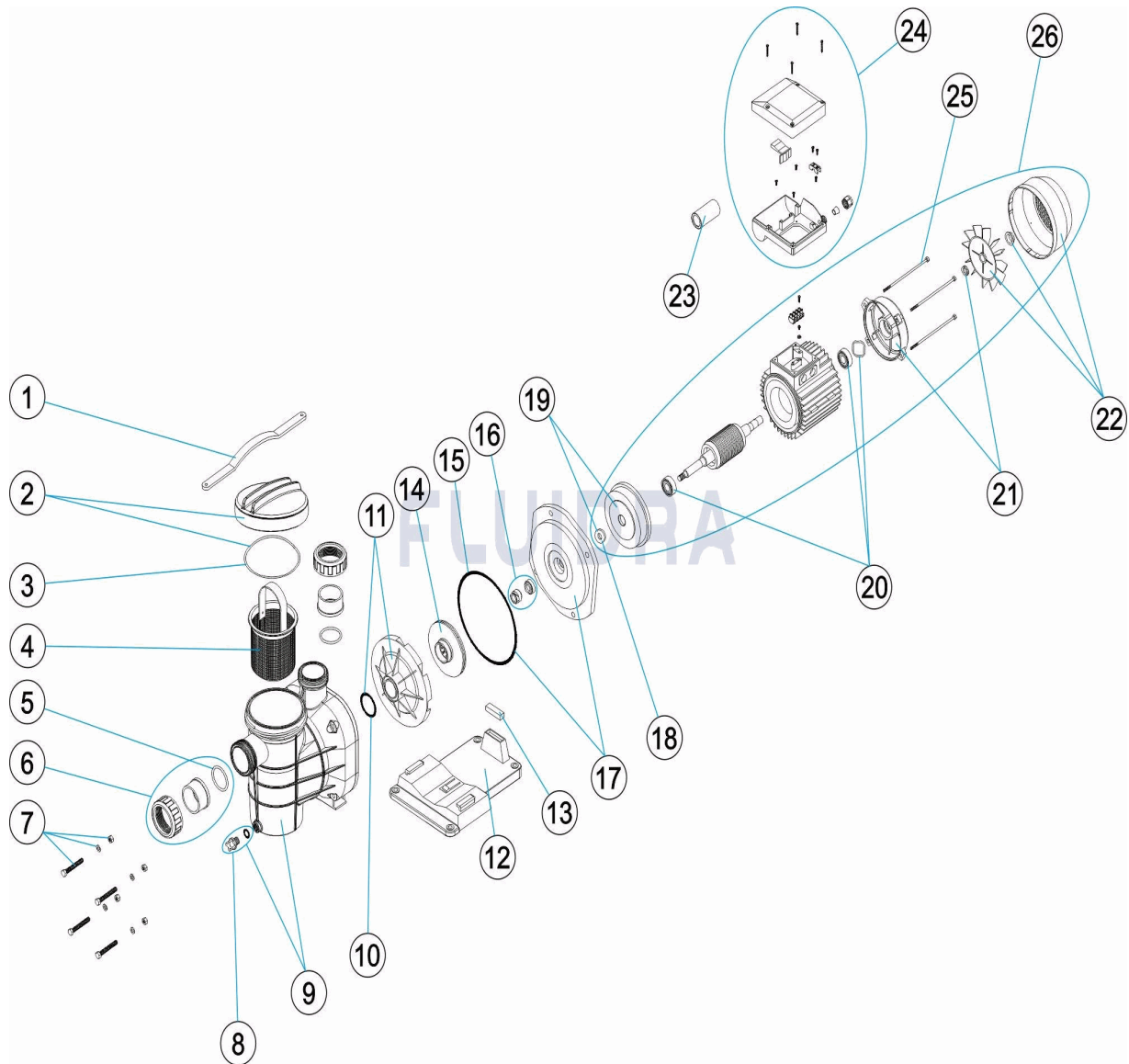
OSSERVAZIONI

POS	CODICE	OSSERVAZIONI
6	*CE05010030	PER: LP033M, LP050M, LP050T, LP075M, LP075T, LP100M, LP100T, LP125M, LP125T METRIC
6	*CE05011027	PER: LP033M-IF, LP050M-IF, LP050T-IF, LP075M-IF, LP075T-IF, LP100M-IF, LP100T-IF, LP125M-IF, LP125T-IF IMPERIAL
13	*CE05010409	PER: LP033M, LP033M-IF, LP050M, LP050M-IF, LP050T, LP050T-IF
13	*CE05010410	PER: LP075M, LP075M-IF, LP075T, LP075T-IF, LP100M, LP100M-IF, LP100T, LP100T-IF, LP125M, LP125M-IF, LP125T, LP125T-IF
14	*CE05010038	PER: LP033M, LP033M-IF
14	*CE05010039	PER: LP050M, LP050M-IF, LP050T, LP050T-IF
14	*CE05010040	PER: LP075M, LP075M-IF, LP075T, LP075T-IF
14	*CE05010041	PER: LP100M, LP100M-IF, LP100T, LP100T-IF
14	*CE05010042	PER: LP125M, LP125M-IF, LP125T, LP125T-IF
17	*CE05010045	PER: LP033M, LP033M-IF, LP050M, LP050M-IF, LP050T, LP050T-IF
17	*CE05010046	PER: LP075M, LP075M-IF, LP075T, LP075T-IF, LP100M, LP100M-IF, LP100T, LP100T-IF, LP125M, LP125M-IF, LP125T, LP125T-IF
19	*CE05010048	PER: LP033M, LP033M-IF, LP050M, LP050M-IF, LP050T, LP050T-IF
19	*CE05010049	PER: LP075M, LP075M-IF, LP075T, LP075T-IF, LP100M, LP100M-IF, LP100T, LP100T-IF, LP125M, LP125M-IF, LP125T, LP125T-IF
21	*CE05010051	PER: LP033M, LP033M-IF, LP050M, LP050M-IF, LP050T, LP050T-IF
21	*CE05010052	PER: LP075M, LP075M-IF, LP075T, LP075T-IF, LP100M, LP100M-IF, LP100T, LP100T-IF, LP125M, LP125M-IF, LP125T, LP125T-IF
22	*CE05010055	PER: LP033M, LP033M-IF, LP050M, LP050M-IF, LP050T, LP050T-IF
22	*CE05010056	PER: LP075M, LP075M-IF, LP075T, LP075T-IF, LP100M, LP100M-IF, LP100T, LP100T-IF, LP125M, LP125M-IF, LP125T, LP125T-IF
23	*CE05010059	PER: LP033M, LP033M-IF, LP050M, LP050M-IF
23	*CE05010060	PER: LP075M, LP075M-IF, LP100M, LP100M-IF, LP125M, LP125M-IF
24	*CE05010057	PER: LP033M, LP033M-IF, LP050M, LP050M-IF, LP075M, LP075M-IF, LP100M, LP100M-IF, LP125M, LP125M-IF
24	*CE05010058	PER: LP050T, LP050T-IF, LP075T, LP075T-IF, LP100T, LP100T-IF, LP125T, LP125T-IF
25	*CE05010053	PER: LP033M, LP033M-IF, LP050M, LP050M-IF, LP050T, LP050T-IF
25	*CE05010054	PER: LP075M, LP075M-IF, LP075T, LP075T-IF, LP100M, LP100M-IF, LP100T, LP100T-IF, LP125M, LP125M-IF, LP125T, LP125T-IF
26	*SA033MR0300	PER: LP033M, LP033M-IF
26	*SA050MR0300	PER: LP050M, LP050M-IF
26	*SA050TR0300	PER: LP050T, LP050T-IF
26	*SA075MR0300	PER: LP075M, LP075M-IF
26	*SA075TR0300	PER: LP075T, LP075T-IF
26	*SA100MR0300	PER: LP100M, LP100M-IF
26	*SA100TR0300IE2	PER: LP100T, LP100T-IF
26	*SA125MR0300	PER: LP125M, LP125M-IF
26	*SA125TR0300	PER: LP125T, LP125T-IF

CODE

LP033M, LP033M-IF, LP050M, LP050M-IF, LP050T, LP050T-IF, LP075M,
 LP075M-IF, LP075T, LP075T-IF, LP100M, LP100M-IF, LP100T, LP100T-IF,
 LP125M, LP125M-IF, LP125T, LP125T-IF

BESCHREIBUNG: PUMPE LYON


DEUTSCH

POS	CODE	BESCHREIBUNG	MENGE	POS	CODE	BESCHREIBUNG	MENGE
1	CE05010025	SCHLÜSSEL VORFILTERDECKEL		14	* CE05010038	TURBINE 0,33 CV	
2	CE05010856	SCHLIESSVORRICHTUNG VORFILTER		14	* CE05010039	TURBINE 1/2 CV II III	
3	CE05010437	O-RING D. 118 X 4		14	* CE05010040	TURBINE 3/4 CV II III	
4	CE05010028	VORFILTERKORB		14	* CE05010041	TURBINE 1 CV II III	
5	CE05010031	O-RING		14	* CE05010042	TURBINE 1 1/2 CV II III	
6	* CE05010030	ANSCHLUSSZUBEHÖR 1 1/2"		15	CE05010440	O-RING D 180X5	
6	* CE05011027	ANSCHLUSSZUBEHÖR 1 1/2"		16	CE05010118	GLEITRINGDICHTUNG	
7	CE05010029	SCHRAUBEN PUMPENGEHÄUSE		17	* CE05010045	ABDECKUNG PUMPENGEHÄUSE 0,33 / 0,5C	
8	CE04121107	STOPFEN 1/4" VENTIL		17	* CE05010046	ABDECKUNG PUMPENGEHÄUSE 0,75 / 1 / 1	
9	CE05010032	GEHÄUSE VORFILTER		18	CE05010047	UNTERLEGSSCHEIBE WASSERBRECHER	
10	CE05010439	O-RING D. 38 X 5		19	* CE05010048	MOTORFLANSCH 0,33 / 0,50 CV	

* SIEHE ANMERKUNGSBLATT

CODE **LP033M, LP033M-IF, LP050M, LP050M-IF, LP050T, LP050T-IF, LP075M,**
LP075M-IF, LP075T, LP075T-IF, LP100M, LP100M-IF, LP100T, LP100T-IF,
LP125M, LP125M-IF, LP125T, LP125T-IF

BESCHREIBUNG: PUMPE LYON

11	CE05010411	WASSERVERTEILER	19	* CE05010049	MOTORFLANSCH 0,75 / 1 / 1,5 CV
12	CE05010033	PUMPENFUSS	20	CE05010050	WÄLZLAGER MOTOR
13	* CE05010409	SCHWINGUNGSDÄMPFER (16 X 45 X 13)	21	* CE05010051	MOTORDECKEL HINTEN 0,33 / 0,50 HP
13	* CE05010410	SCHWINGUNGSDÄMPFER (9 X 45 X 13)	21	* CE05010052	MOTORDECKEL HINTEN 1/2 - 3/41 HP
22	* CE05010055	SET VENTILATOR MIT ABDECKUNG 0,33 / 1	26	* SA050MR0300	MOTOR SA050M
22	* CE05010056	SET VENTILATOR MIT ABDECKUNG 0,75 / 1	26	* SA050TR0300	MOTOR SA050T
23	* CE05010059	KONDENSATOR 12 MF 0,33 / 0,50 CV	26	* SA075MR0300	MOTOR SA075M
23	* CE05010060	KONDENSATOR 20 MF 0,75 / 1 / 1,5 CV	26	* SA075TR0300	MOTOR SA075T
24	* CE05010057	ANSCHLUSSGEHÄUSE KOMPLETT II	26	* SA100MR0300	MOTOR SA100M
24	* CE05010058	ANSCHLUSSGEHÄUSE KOMPLETT III	26	* SA100TR0300IE2	MOTOR IE2 SA100T
25	* CE05010053	MOTORZUGSTREBE 0,33 / 0,50 HP	26	* SA125MR0300	MOTOR SA125M
25	* CE05010054	MOTORZUGSTREBE 0,75 / 1 / 1,5 HP	26	* SA125TR0300	MOTOR SA125T
26	* SA033MR0300	MOTOR SA033M			

CODE **LP033M, LP033M-IF, LP050M, LP050M-IF, LP050T, LP050T-IF, LP075M, LP075M-IF, LP075T, LP075T-IF, LP100M, LP100M-IF, LP100T, LP100T-IF, LP125M, LP125M-IF, LP125T, LP125T-IF**

BESCHREIBUNG: PUMPE LYON

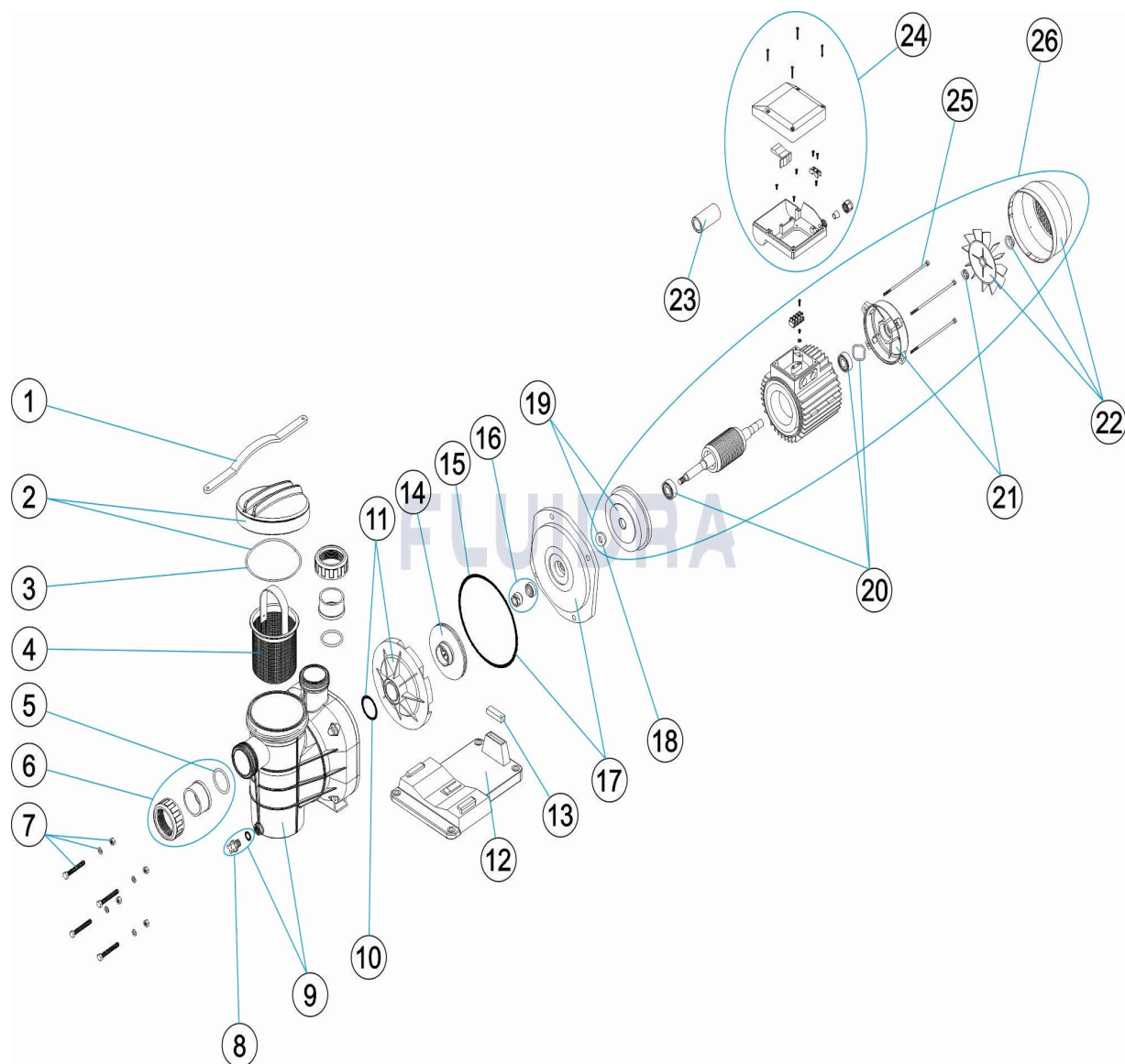
HINWEISE

POS	CODE	HINWEISE
6	*CE05010030	FÜR: LP033M, LP050M, LP050T, LP075M, LP075T, LP100M, LP100T, LP125M, LP125T METRIC
6	*CE05011027	FÜR: LP033M-IF, LP050M-IF, LP050T-IF, LP075M-IF, LP075T-IF, LP100M-IF, LP100T-IF, LP125M-IF, LP125T-IF IMPERIAL
13	*CE05010409	FÜR: LP033M, LP033M-IF, LP050M, LP050M-IF, LP050T, LP050T-IF
13	*CE05010410	FÜR: LP075M, LP075M-IF, LP075T, LP075T-IF, LP100M, LP100M-IF, LP100T, LP100T-IF, LP125M, LP125M-IF, LP125T, LP125T-IF
14	*CE05010038	FÜR: LP033M, LP033M-IF
14	*CE05010039	FÜR: LP050M, LP050M-IF, LP050T, LP050T-IF
14	*CE05010040	FÜR: LP075M, LP075M-IF, LP075T, LP075T-IF
14	*CE05010041	FÜR: LP100M, LP100M-IF, LP100T, LP100T-IF
14	*CE05010042	FÜR: LP125M, LP125M-IF, LP125T, LP125T-IF
17	*CE05010045	FÜR: LP033M, LP033M-IF, LP050M, LP050M-IF, LP050T, LP050T-IF
17	*CE05010046	FÜR: LP075M, LP075M-IF, LP075T, LP075T-IF, LP100M, LP100M-IF, LP100T, LP100T-IF, LP125M, LP125M-IF, LP125T, LP125T-IF
19	*CE05010048	FÜR: LP033M, LP033M-IF, LP050M, LP050M-IF, LP050T, LP050T-IF
19	*CE05010049	FÜR: LP075M, LP075M-IF, LP075T, LP075T-IF, LP100M, LP100M-IF, LP100T, LP100T-IF, LP125M, LP125M-IF, LP125T, LP125T-IF
21	*CE05010051	FÜR: LP033M, LP033M-IF, LP050M, LP050M-IF, LP050T, LP050T-IF
21	*CE05010052	FÜR: LP075M, LP075M-IF, LP075T, LP075T-IF, LP100M, LP100M-IF, LP100T, LP100T-IF, LP125M, LP125M-IF, LP125T, LP125T-IF
22	*CE05010055	FÜR: LP033M, LP033M-IF, LP050M, LP050M-IF, LP050T, LP050T-IF
22	*CE05010056	FÜR: LP075M, LP075M-IF, LP075T, LP075T-IF, LP100M, LP100M-IF, LP100T, LP100T-IF, LP125M, LP125M-IF, LP125T, LP125T-IF
23	*CE05010059	FÜR: LP033M, LP033M-IF, LP050M, LP050M-IF
23	*CE05010060	FÜR: LP075M, LP075M-IF, LP100M, LP100M-IF, LP125M, LP125M-IF
24	*CE05010057	FÜR: LP033M, LP033M-IF, LP050M, LP050M-IF, LP075M, LP075M-IF, LP100M, LP100M-IF, LP125M, LP125M-IF
24	*CE05010058	FÜR: LP050T, LP050T-IF, LP075T, LP075T-IF, LP100T, LP100T-IF, LP125T, LP125T-IF
25	*CE05010053	FÜR: LP033M, LP033M-IF, LP050M, LP050M-IF, LP050T, LP050T-IF
25	*CE05010054	FÜR: LP075M, LP075M-IF, LP075T, LP075T-IF, LP100M, LP100M-IF, LP100T, LP100T-IF, LP125M, LP125M-IF, LP125T, LP125T-IF
26	*SA033MR0300	FÜR: LP033M, LP033M-IF
26	*SA050MR0300	FÜR: LP050M, LP050M-IF
26	*SA050TR0300	FÜR: LP050T, LP050T-IF
26	*SA075MR0300	FÜR: LP075M, LP075M-IF
26	*SA075TR0300	FÜR: LP075T, LP075T-IF
26	*SA100MR0300	FÜR: LP100M, LP100M-IF
26	*SA100TR0300IE2	FÜR: LP100T, LP100T-IF
26	*SA125MR0300	FÜR: LP125M, LP125M-IF
26	*SA125TR0300	FÜR: LP125T, LP125T-IF

CODIGO

LP033M, LP033M-IF, LP050M, LP050M-IF, LP050T, LP050T-IF, LP075M,
 LP075M-IF, LP075T, LP075T-IF, LP100M, LP100M-IF, LP100T, LP100T-IF,
 LP125M, LP125M-IF, LP125T, LP125T-IF

DESCRIÇÃO: BOMBA LYON


PORTUGUES

POS	CODIGO	DESCRIÇÃO	JANTIDADE	POS	CODIGO	DESCRIÇÃO	JANTIDADE
1	CE05010025	CHAVE TAMPA		14	* CE05010038	RODÍZIO 0,33 CV	
2	CE05010856	FECHO-PRÉ-FILTRO		14	* CE05010039	RODÍZIO 1/2 CV. II III	
3	CE05010437	JUNTA TÓRICA D 118X4		14	* CE05010040	RODÍZIO 3/4 CV. II III	
4	CE05010028	CESTO PRÉ-FILTRO		14	* CE05010041	RODÍZIO 1 CV. II III	
5	CE05010031	JUNTA TÓRICA		14	* CE05010042	RODÍZIO 1 1/2 CV. II III	
6	* CE05010030	ACESSÓRIOS DE UNIÃO 1 1/2		15	CE05010440	JUNTA TÓRICA D 180X5	
6	* CE05011027	ACESSÓRIOS DE UNIÃO 1 1/2"		16	CE05010118	JUNTA MECÂNICA	
7	CE05010029	PARAFUSOS CORPO BOMBA		17	* CE05010045	TAMPA CORPO BOMBA 0,33 / 0,50 CV	
8	CE04121107	TAMPÃO 1/4' VÁLVULA		17	* CE05010046	TAMPA CORPO BOMBA 0,75 / 1 / 1,5 CV	
9	CE05010032	CORPO PRÉ-FILTRO		18	CE05010047	ALHETA ROMPE ÁGUAS	
10	CE05010439	JUNTA TÓRICA D. 38X5		19	* CE05010048	MANILHA MOTOR 0,33 / 0,50 CV	

* VEJA A FICHA DE OBSERVAÇÕES

CODIGO LP033M, LP033M-IF, LP050M, LP050M-IF, LP050T, LP050T-IF, LP075M, LP075M-IF, LP075T, LP075T-IF, LP100M, LP100M-IF, LP100T, LP100T-IF, LP125M, LP125M-IF, LP125T, LP125T-IF

DESCRIÇÃO: BOMBA LYON

11	CE05010411	DIFUSOR	19	* CE05010049	MANILHA MOTOR 0,75 / 1 / 1,5 CV
12	CE05010033	PÉ BOMBA	20	CE05010050	ROLAMENTO MOTOR
13	* CE05010409	SILENT-BLOCK (16X45X13)	21	* CE05010051	TAMPA TRASEIRA MOTOR 0,33 / 0,50 HP
13	* CE05010410	SILENT-BLOCK (9X45X13)	21	* CE05010052	TAMPA TRASEIRA MOTOR 1/2-3/41 HP
22	* CE05010055	CONJUNTO VENTILADOR + TAMPA DE 0,3€	26	* SA050MR0300	MOTOR SA050M
22	* CE05010056	CONJUNTO VENTILADOR + TAMPA DE 0,7€	26	* SA050TR0300	MOTOR SA050T
23	* CE05010059	CONDENSADOR 12 UF 0,33 / 0,50 HP.	26	* SA075MR0300	MOTOR SA075M
23	* CE05010060	CONDENSADOR 20 UF 0,75 / 1 / 1,5 HP.	26	* SA075TR0300	MOTOR SA075T
24	* CE05010057	CAIXA BORNES II	26	* SA100MR0300	MOTOR SA100M
24	* CE05010058	CAIXA BORNES III	26	* SA100TR0300IE2	MOTOR IE2 SA100T
25	* CE05010053	TIRANTE BRAÇOS CHUVEIRO 0,33 / 0,50 H	26	* SA125MR0300	MOTOR SA125M
25	* CE05010054	TIRANTE BRAÇOS CHUVEIRO 0,75 / 1 / 1,5	26	* SA125TR0300	MOTOR SA125T
26	* SA033MR0300	MOTOR SA033M			

CODIGO LP033M, LP033M-IF, LP050M, LP050M-IF, LP050T, LP050T-IF, LP075M, LP075M-IF, LP075T, LP075T-IF, LP100M, LP100M-IF, LP100T, LP100T-IF, LP125M, LP125M-IF, LP125T, LP125T-IF

DESCRIÇÃO: BOMBA LYON

OBSERVAÇÕES

POS	CODIGO	OBSERVAÇÕES
6	*CE05010030	PARA: LP033M, LP050M, LP050T, LP075M, LP075T, LP100M, LP100T, LP125M, LP125T METRIC
6	*CE05011027	PARA: LP033M-IF, LP050M-IF, LP050T-IF, LP075M-IF, LP075T-IF, LP100M-IF, LP100T-IF, LP125M-IF, LP125T-IF IMPERIAL
13	*CE05010409	PARA: LP033M, LP033M-IF, LP050M, LP050M-IF, LP050T, LP050T-IF
13	*CE05010410	PARA: LP075M, LP075M-IF, LP075T, LP075T-IF, LP100M, LP100M-IF, LP100T, LP100T-IF, LP125M, LP125M-IF, LP125T, LP125T-IF
14	*CE05010038	PARA: LP033M, LP033M-IF
14	*CE05010039	PARA: LP050M, LP050M-IF, LP050T, LP050T-IF
14	*CE05010040	PARA: LP075M, LP075M-IF, LP075T, LP075T-IF
14	*CE05010041	PARA: LP100M, LP100M-IF, LP100T, LP100T-IF
14	*CE05010042	PARA: LP125M, LP125M-IF, LP125T, LP125T-IF
17	*CE05010045	PARA: LP033M, LP033M-IF, LP050M, LP050M-IF, LP050T, LP050T-IF
17	*CE05010046	PARA: LP075M, LP075M-IF, LP075T, LP075T-IF, LP100M, LP100M-IF, LP100T, LP100T-IF, LP125M, LP125M-IF, LP125T, LP125T-IF
19	*CE05010048	PARA: LP033M, LP033M-IF, LP050M, LP050M-IF, LP050T, LP050T-IF
19	*CE05010049	PARA: LP075M, LP075M-IF, LP075T, LP075T-IF, LP100M, LP100M-IF, LP100T, LP100T-IF, LP125M, LP125M-IF, LP125T, LP125T-IF
21	*CE05010051	PARA: LP033M, LP033M-IF, LP050M, LP050M-IF, LP050T, LP050T-IF
21	*CE05010052	PARA: LP075M, LP075M-IF, LP075T, LP075T-IF, LP100M, LP100M-IF, LP100T, LP100T-IF, LP125M, LP125M-IF, LP125T, LP125T-IF
22	*CE05010055	PARA: LP033M, LP033M-IF, LP050M, LP050M-IF, LP050T, LP050T-IF
22	*CE05010056	PARA: LP075M, LP075M-IF, LP075T, LP075T-IF, LP100M, LP100M-IF, LP100T, LP100T-IF, LP125M, LP125M-IF, LP125T, LP125T-IF
23	*CE05010059	PARA: LP033M, LP033M-IF, LP050M, LP050M-IF
23	*CE05010060	PARA: LP075M, LP075M-IF, LP100M, LP100M-IF, LP125M, LP125M-IF
24	*CE05010057	PARA: LP033M, LP033M-IF, LP050M, LP050M-IF, LP075M, LP075M-IF, LP100M, LP100M-IF, LP125M, LP125M-IF
24	*CE05010058	PARA: LP050T, LP050T-IF, LP075T, LP075T-IF, LP100T, LP100T-IF, LP125T, LP125T-IF
25	*CE05010053	PARA: LP033M, LP033M-IF, LP050M, LP050M-IF, LP050T, LP050T-IF
25	*CE05010054	PARA: LP075M, LP075M-IF, LP075T, LP075T-IF, LP100M, LP100M-IF, LP100T, LP100T-IF, LP125M, LP125M-IF, LP125T, LP125T-IF
26	*SA033MR0300	PARA: LP033M, LP033M-IF
26	*SA050MR0300	PARA: LP050M, LP050M-IF
26	*SA050TR0300	PARA: LP050T, LP050T-IF
26	*SA075MR0300	PARA: LP075M, LP075M-IF
26	*SA075TR0300	PARA: LP075T, LP075T-IF
26	*SA100MR0300	PARA: LP100M, LP100M-IF
26	*SA100TR0300IE2	PARA: LP100T, LP100T-IF
26	*SA125MR0300	PARA: LP125M, LP125M-IF
26	*SA125TR0300	PARA: LP125T, LP125T-IF