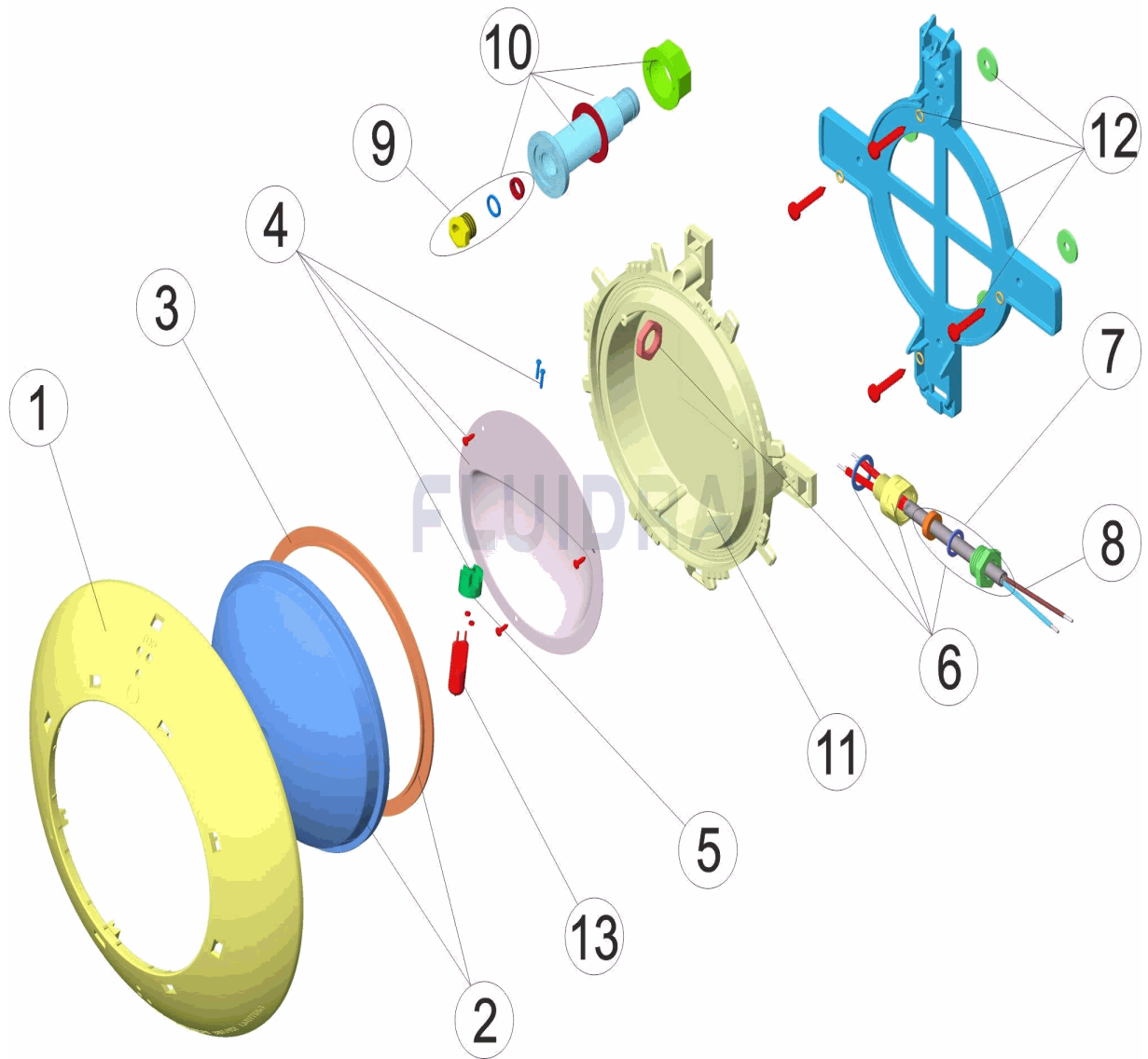


CODIGO 33110

DESCRIPCION: PROYECTOR EXTRAPLANO P. MADERA

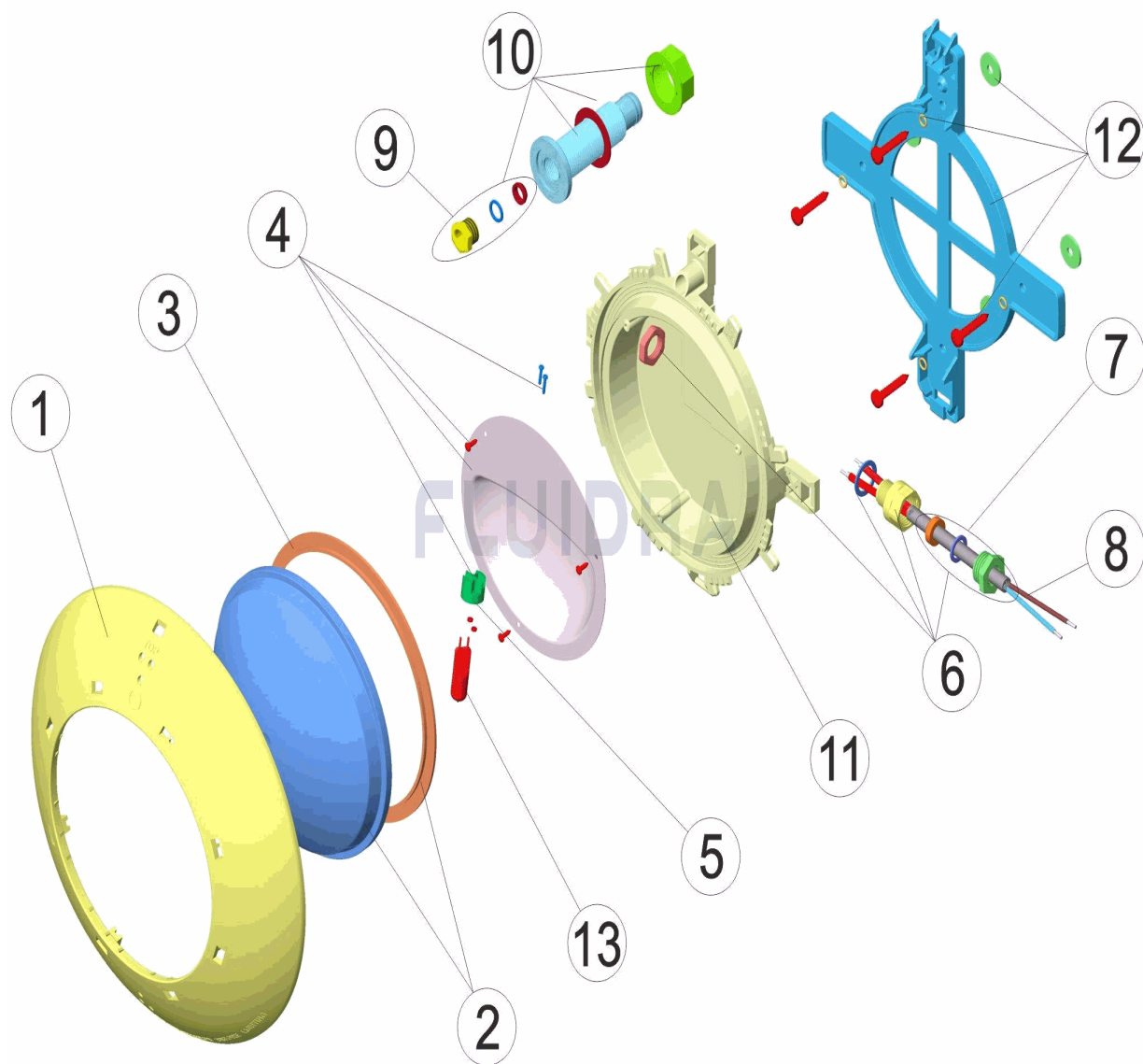


ESPAÑOL

POS	CODIGO	DESCRIPCION	CANTIDAD	POS	CODIGO	DESCRIPCION	CANTIDAD
1	4403010067	EMBELLECEDOR PROYECTOR		8	4403011905	CABLE PROYECTOR	
2	4403012303	LENTE TRANSPARENTE + JUNTA		9	4403011405	PRENSAESTOPAS PROYECTOR DICROICO	
3	4403010102	JUNTA SILICONA PROYECTOR		10	4403010038	BOLSA COMPONENTES PARA EL 33110	
4	4403011903	REFLECTOR PORTALAMPARAS		11	4403011908	CUERPO PROYECTOR	
5	4403011407	PORTALAMPARAS		12	4403010068	SOPORTE PROYECTOR PLANO	
6	4403012302	CJTO. PRENSAESTOPAS M-16 KT 19,5X2		13	00371	LAMPARA HALOGENA 12 V. 100 W.	
7	4403010076	CJTO. TAPON PRENSAESTOPAS					

CODE 33110

DESCRIPTION: PROJECTEUR EXTRAPLAT P. BOIS

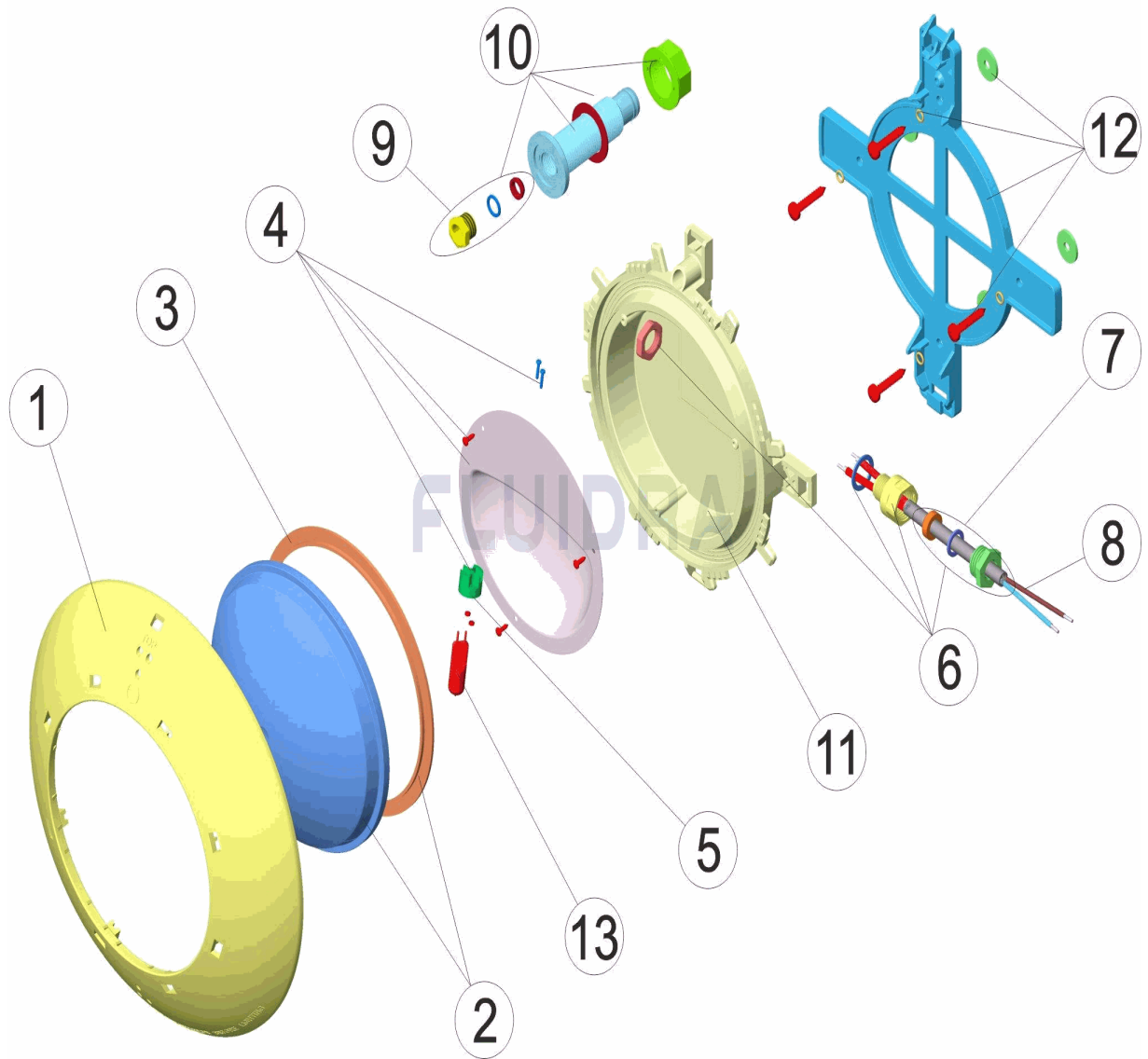


FRANCAIS

POS	CODE	DESCRIPTION	QUANTITE	POS	CODE	DESCRIPTION	QUANTITE
1	4403010067	ENJOLIVEUR PROJECTEUR		8	4403011905	CABLE DE PROJECTEUR	
2	4403012303	LENTE PROJECTEUR + JOINT		9	4403011405	PRESSE-ÉTOUPE ET JOINT PROJ. DICHRO	
3	4403010102	JOINT SILICONE PROJECTEUR		10	4403010038	SAC DES COMPOSANTS POUR 33110	
4	4403011903	REFLECTEUR PORTE LAMPE		11	4403011908	CORPS DU PROJECTEUR	
5	4403011407	PORTE-LAMPE		12	4403010068	SUPPORT PROJECTEUR PLAT	
6	4403012302	ENSEMBLE PRESSE ÉTOUPE M-16 KT 19,€		13	00371	LAMPE 12 V. 100 W.	
7	4403010076	ENSEMBLE BOUCHON PRESSE-ETOUPE					

CODE 33110

DESCRIPTION: SUPER-SLIM PROJECTOR WOODEN POOL

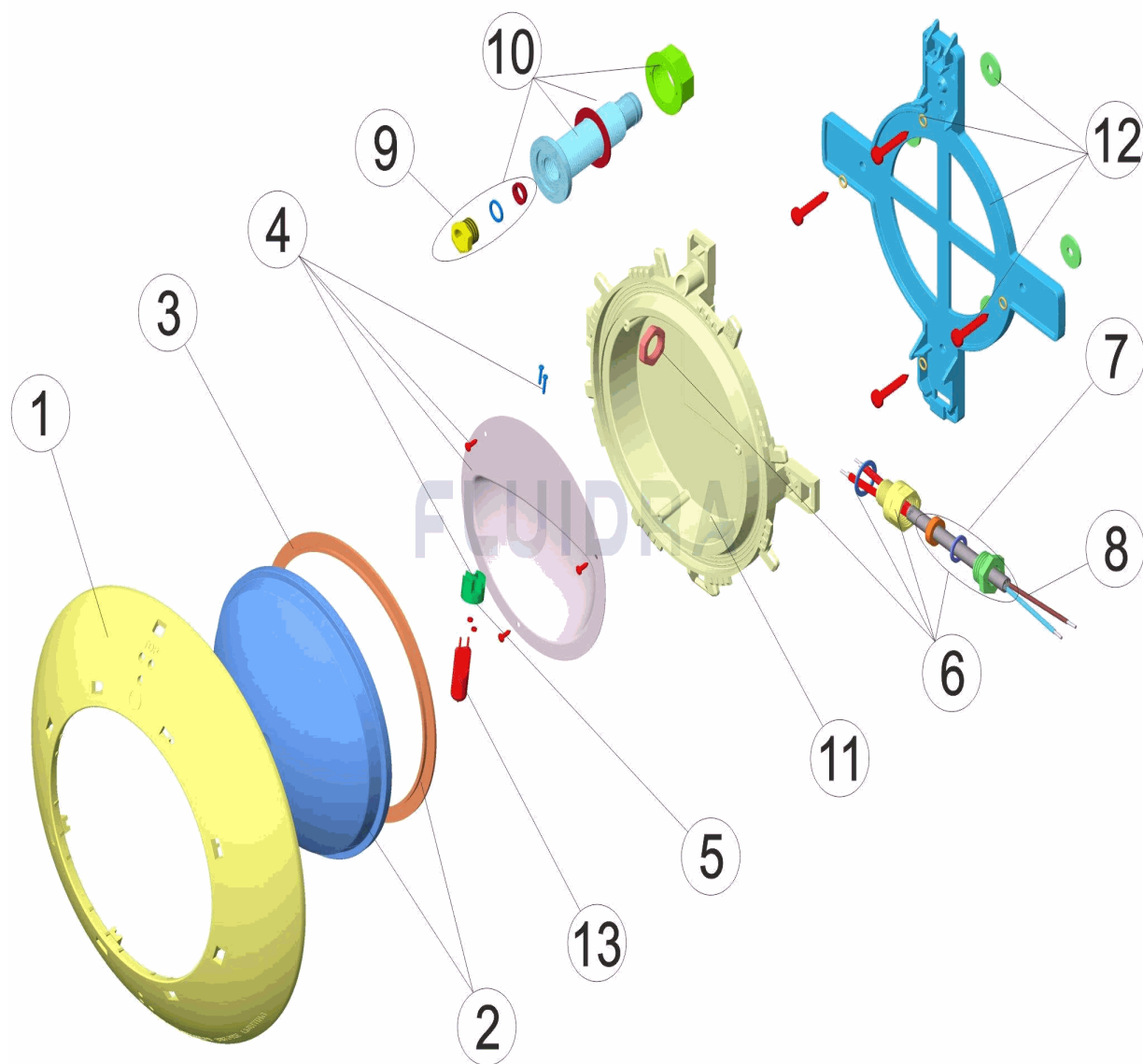


ENGLISH

POS	CODE	DESCRIPTION	QUANTITY	POS	CODE	DESCRIPTION	QUANTITY
1	4403010067	PROJECTOR TRIM		8	4403011905	LIGHT CABLE	
2	4403012303	CLEAR LENS + GASKET		9	4403011405	PACKING GLAND	
3	4403010102	LIGHT SILICON GASKET		10	4403010038	BAG COMPONENTS FOR 33110	
4	4403011903	LAMPHOLDER REFLECTOR PLATE		11	4403011908	LIGHT BODY	
5	4403011407	LAMP HOLDER		12	4403010068	SLIM PROJECTOR BRACKET	
6	4403012302	GLAND SEAL M-16 KT 19,5X2		13	00371	LIGHTBULB 12 V. 100 W.	
7	4403010076	PACKING GLAND ASSEMBLY					

CODICE 33110

DESCRIZIONE: PROIETTORE EXTRAPIATTO PISCINA LEGNO

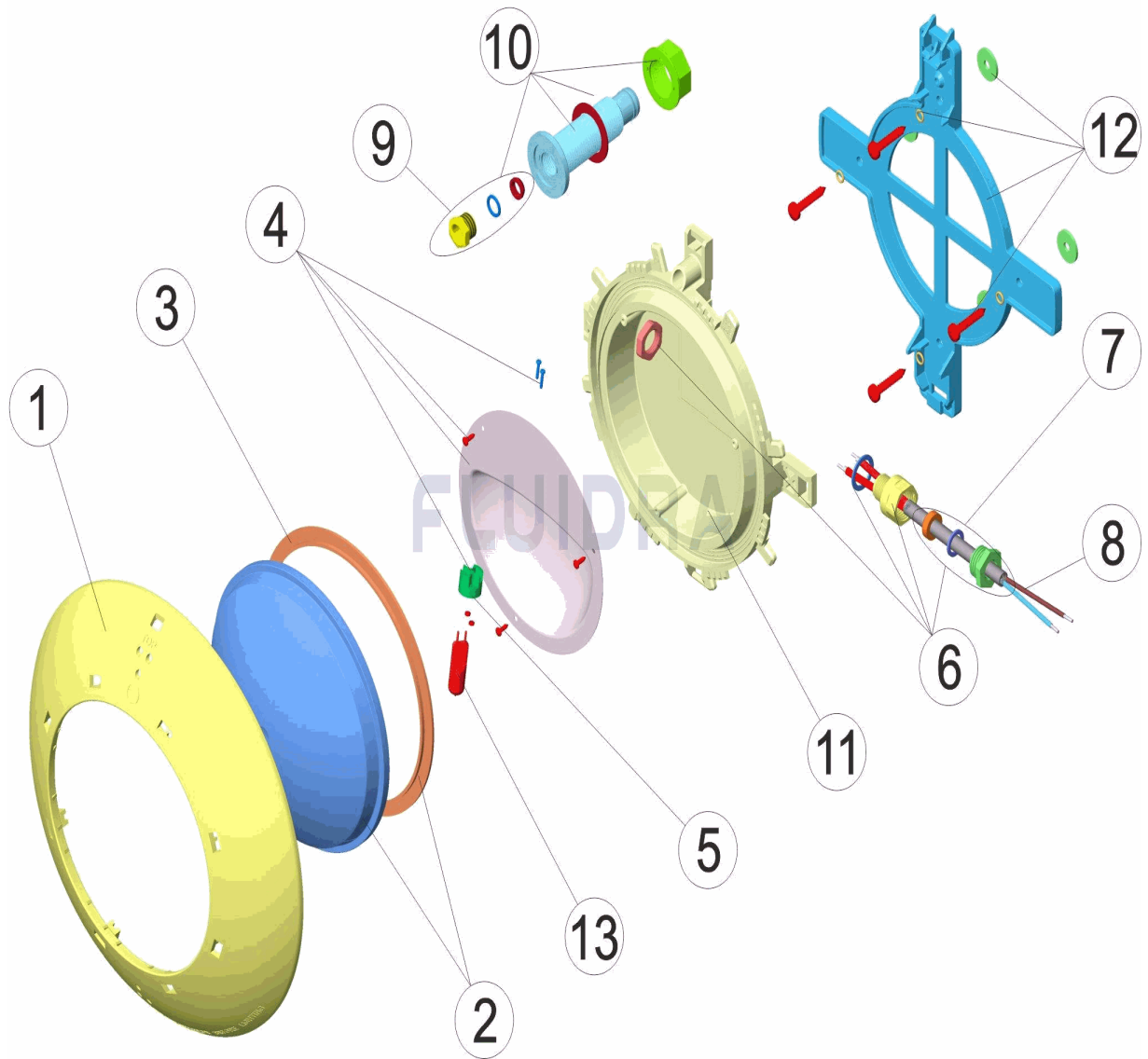


ITALIANO

POS	CODICE	DESCRIZIONE	QUANTITA'	POS	CODICE	DESCRIZIONE	QUANTITA'
1	4403010067	RIFINITURA FARO		8	4403011905	CAVO FARO	
2	4403012303	LENTE PROIETTORE + GUERNIZIONE		9	4403011405	PRESSACAVI FARO DICROICO	
3	4403010102	GUARNIZIONE SILICONE FARO		10	4403010038	BORSA COMPONENTI 33110	
4	4403011903	RIFLETTORE PORTALAMPADE		11	4403011908	CORPO FARO	
5	4403011407	PORTALAMPADE		12	4403010068	SUPPORTO FARO PIATTO	
6	4403012302	KIT PRESSACAVO M-16 KT 19,5X2		13	00371	LAMPADINA 12 V. 100 W.	
7	4403010076	INSIEME TAPPO PREMISTOPPA					

CODE 33110

BESCHREIBUNG: UWS EXTRAFLACH P. HOLZ

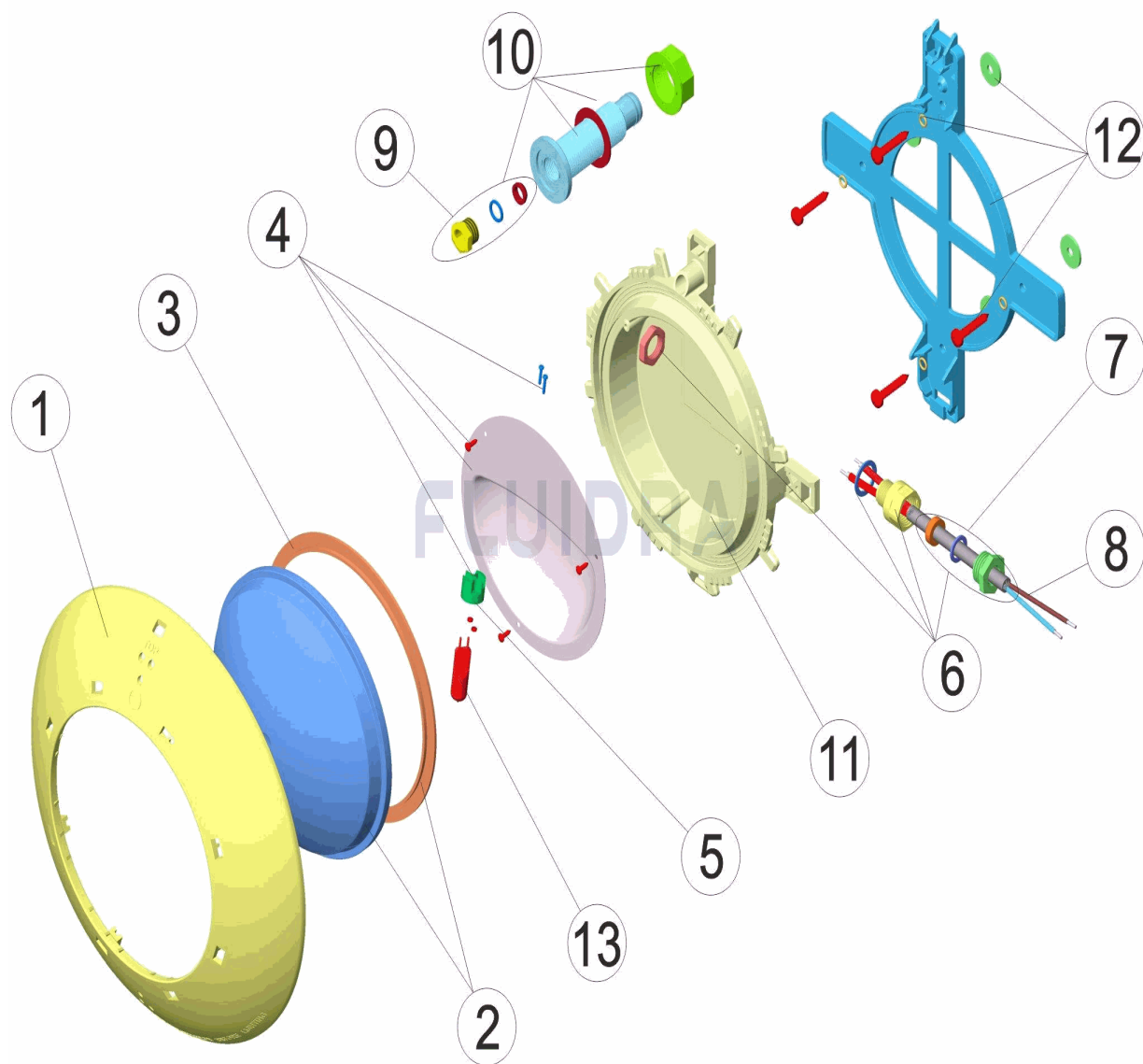


DEUTSCH

POS	CODE	BESCHREIBUNG	MENGE	POS	CODE	BESCHREIBUNG	MENGE
1	4403010067	BLLENDE UWS		8	4403011905	UWS-KABEL	
2	4403012303	LINSE TRANSPARENT UND DICHUNG		9	4403011405	QUETSCHVERSCHRAUBUNG UWS KALT LIC	
3	4403010102	DICHTUNG SILIKON UWS		10	4403010038	PACK KOMPONENTEN FÜR 33110	
4	4403011903	REFLEKTOR LAMPENFASSUNG		11	4403011908	GEHÄUSE UWS	
5	4403011407	LAMPENFASSUNG		12	4403010068	HALTERUNG UWS FLACH	
6	4403012302	SET QUETSCHVERSCHRAUBUNG M-16 KT		13	00371	LAMPE HALOGEN 12 V 100 W	
7	4403010076	STOPFENSET QUETSCHVERSCHRAUBUN					

CODIGO 33110

DESCRIÇÃO: PROJETO EXTRAPLANO P. MADEIRA



PORTUGUES

POS	CODIGO	DESCRIÇÃO	JANTIDADE	POS	CODIGO	DESCRIÇÃO	JANTIDADE
1	4403010067	ARO DECORATIVO PROJETO		8	4403011905	CABO PROJECTOR	
2	4403012303	LENTE TRANSPARENTE + JUNTA		9	4403011405	BUCIN PROJECTOR	
3	4403010102	JUNTA SILICONE PROTECTOR		10	4403010038	SACO DE COMPONENTES 33110	
4	4403011903	REFLECTOR PORTA-LÂMPADAS		11	4403011908	CORPO PROJECTOR	
5	4403011407	PORTA-LÂMPADA		12	4403010068	SUPORTE PROJETO PLANO	
6	4403012302	CONJUNTO BUCIM M-16 KT 19,5X2		13	00371	BOMBILHA 12 V. 100 W.	
7	4403010076	CONJUNTO TAMPABUCIM					