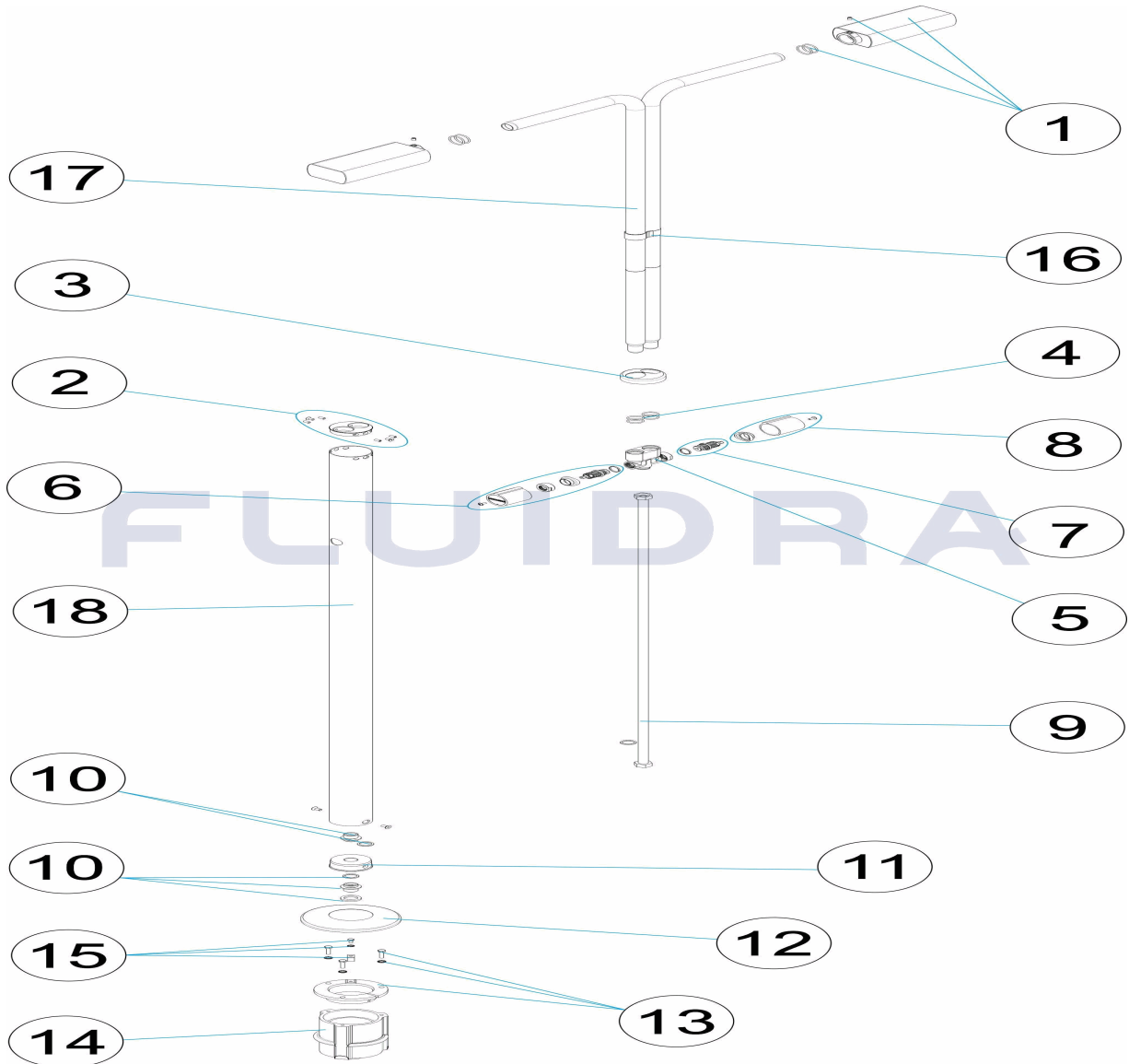


CODIGO **59775**

DESCRIPCION: **DUCHA ANGEL 2 ROCIADORES 2 VALVULA**

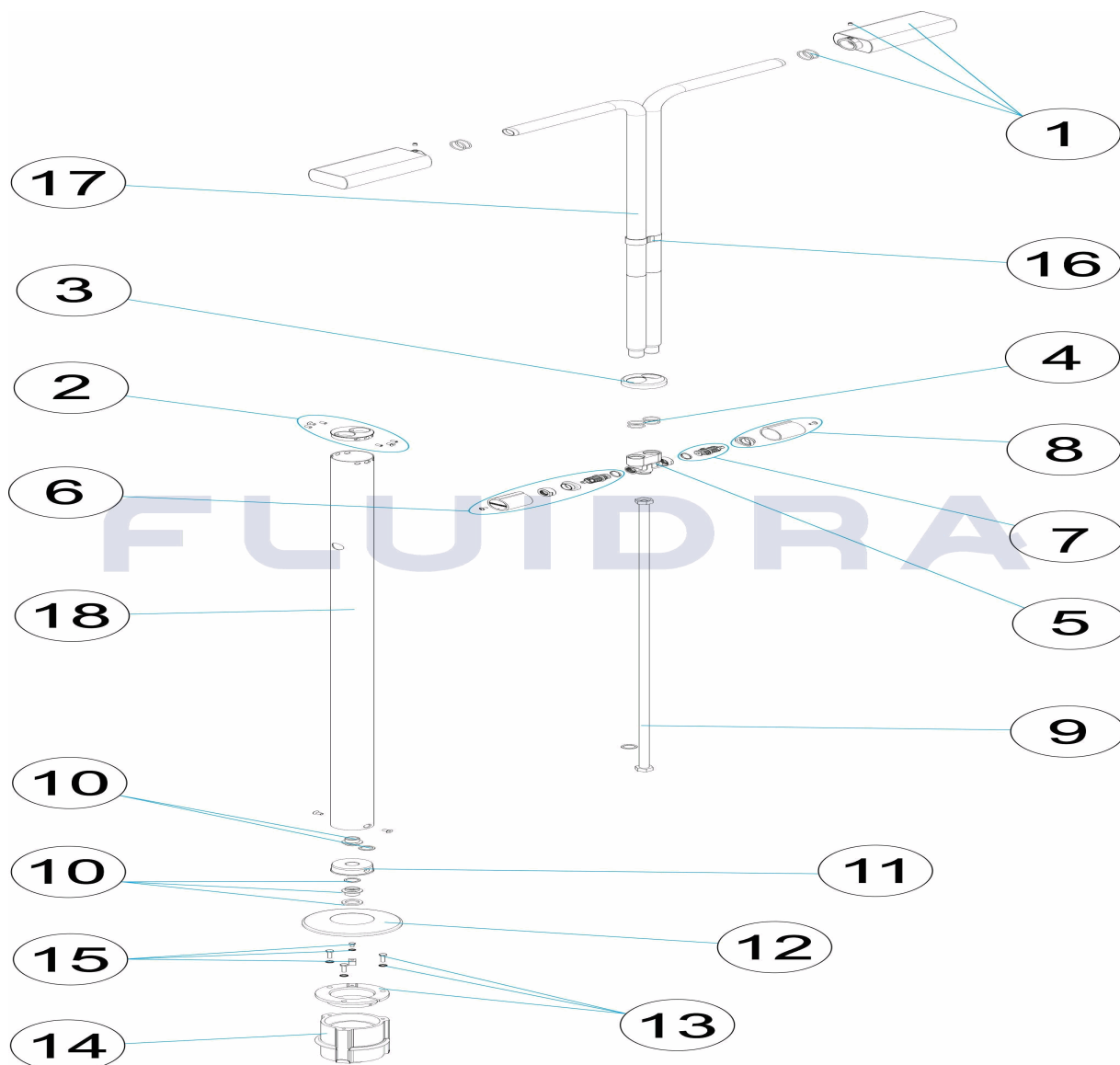


**ESPAÑOL**

POS	CODIGO	DESCRIPCION	CANTIDAD	POS	CODIGO	DESCRIPCION	CANTIDAD
1	4401040226	ROCIADOR RECTANGULAR CON TORNILLI		10	4401040234	CONEXION SALIDA 1/2" M. - 1/2 M "	
2	4401040227	GUIA SUPERIOR 2 BRAZOS		11	4401040233	COLECTOR INFERIOR DUCHA	
3	4401040707	TAPETA EMBELL. SUP. 2 BRAZOS		12	4401040507	TAPETA EMBELLECEDORA INFERIOR	
4	4401040228	JUNTA TORICA		13	4401042810	FIJACION ANCLAJE DUCHA D 63	
5	4401040229	COLECTOR 2 VALVULAS 2 BRAZOS		14	4401042811	CUERPO ANCLAJE DUCHA	
6	4401040230	CJTO. POMO + EJE VALVULA		15	4401040903	TOMA DE TIERRA	
7	4401040019	EJE VALVULA		16	4401040710	TIRANTE BRAZOS DUCHA	
8	4401040231	POMO CILINDRICO		17	59775R0002	BRAZO DUCHA	
9	4401040232	LATIGUILLO 1/2" H. - 1/2" H. DN11 L=1100"		18	59775R0001	CUERPO DUCHA 2 VALVULAS	

CODE 59775

DESCRIPTION: DOUCHE ANGEL 2 POMMEAUX 2 ROBINETS

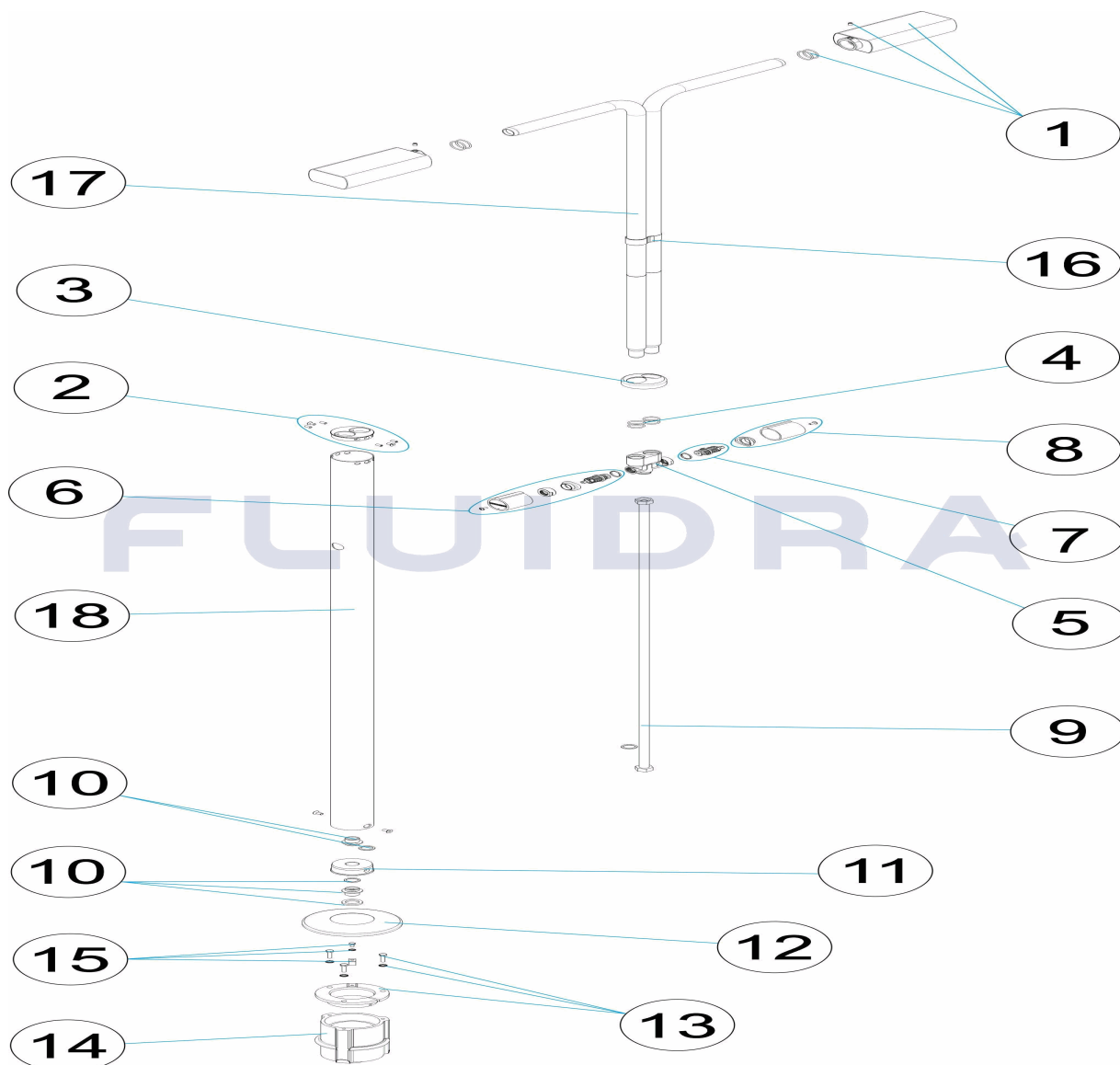


FRANCAIS

POS	CODE	DESCRIPTION	QUANTITE	POS	CODE	DESCRIPTION	QUANTITE
1	4401040226	JET RECTANGULAIRE AVEC VIS SANS TÊT		10	4401040234	RACCORD SORTIE 1/2" M. - 1/2 M "	
2	4401040227	GUIDE SUPÉRIEUR 2 BRAS		11	4401040233	COLLECTEUR FOND DOUCHE	
3	4401040707	ENJOLIVEUR SUPERIEUR 2 BRAS.		12	4401040507	ENJOLIEVEUR INFERIEUR	
4	4401040228	JOINT TORIQUE		13	4401042810	FIXATION ANCRAGE DOUCHE D 63	
5	4401040229	MANIFOLD 2 VOIES 2 BRAZOS		14	4401042811	CORPS D'ANCRAGE DE DOUCHE	
6	4401040230	ENSEMBLE POMMEAU + AXE VANNE		15	4401040903	PRISE DE TERRE	
7	4401040019	AXE VANNE		16	4401040710	COLLIER DE MAINTIEN EXTÉRIEUR DE TUE	
8	4401040231	POMMEAU CYLINDRIQUE		17	59775R0002	BRAS DOUCHE	
9	4401040232	FLEXIBLE 1/2" H. - 1/2" H. DN11 L=1100"		18	59775R0001	CORPS DOUCHE	

CODE **59775**

DESCRIPTION: **SHOWER ANGEL 2 SPRINKLERS 2 VALVES**

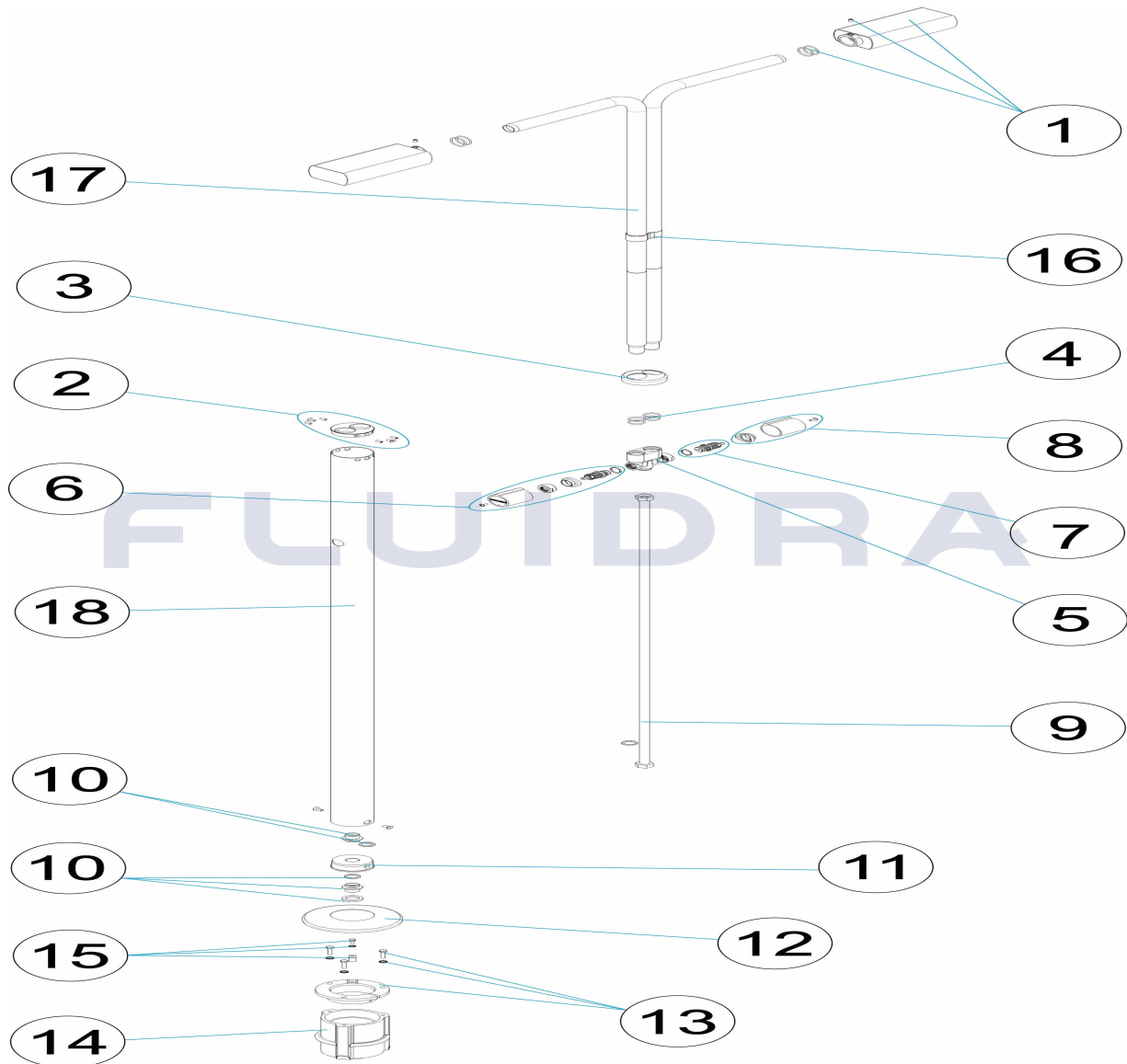


**ENGLISH**

POS	CODE	DESCRIPTION	QUANTITY	POS	CODE	DESCRIPTION	QUANTITY
1	4401040226	RECTANGULAR NOZZLE WITH SET SCREV		10	4401040234	1/2" M. - 1/2 M. OUTLET CONNECTIO "	
2	4401040227	GUIDE TOP 2 ARMS		11	4401040233	BOTTOM MANIFOLD SHOWER	
3	4401040707	2 ARM SUPPORT ESCUTCHEON PLATE		12	4401040507	BOTTOM ESCUTCHEON PLATE	
4	4401040228	O' RING		13	4401042810	SHOWER ANCHOR D 63	
5	4401040229	2-WAY MANIFOLD 2 BRAZOS		14	4401042811	SHOWER ANCHORING FIXTURE	
6	4401040230	KNOB + VALVE SHAFT UNIT		15	4401040903	EARTH CONNECTION	
7	4401040019	VALVE SHAFT		16	4401040710	SHOWER ARMS HOLDER	
8	4401040231	CYLINDRICAL KNOB		17	59775R0002	SHOWER ARM	
9	4401040232	1/2" H. - 1/2" H. DN11 L=1100 CABL "		18	59775R0001	SHOWER UNIT	

CODICE 59775

DESCRIZIONE: DOCCIA ANGEL 2 SOFFIONI 2 VALVOLE

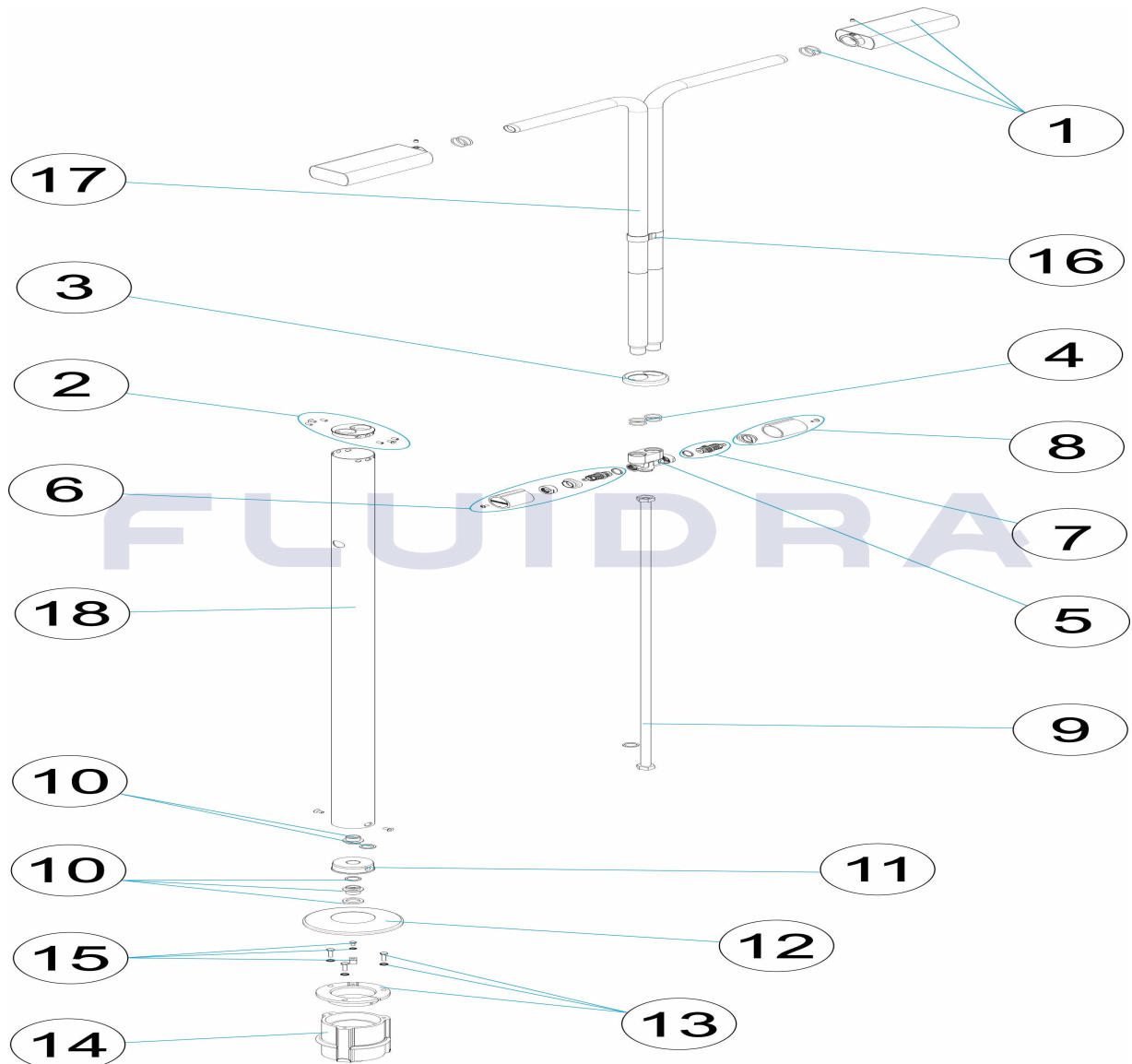


ITALIANO

POS	CODICE	DESCRIZIONE	QUANTITA'	POS	CODICE	DESCRIZIONE	QUANTITA'
1	4401040226	SPRUZZATORE RETTANGOLARE VITE PRII		10	4401040234	CONNESSIONE D'USCITA 1/2" M. - 1/2 M "	
2	4401040227	GUIDA SUPERIORE A 2 BRACCI		11	4401040233	COLLETTORE INFERIORE COCCIA	
3	4401040707	COPRIFLANGIA SUPERIORE 2 BRACCI		12	4401040507	COPRIFLANGIA INFERIORE	
4	4401040228	O-RING		13	4401042810	FISSAGGIO ANCORAGGIO DOCCIA D 63	
5	4401040229	COLLETTORE 2 VIE 2 BRAZOS		14	4401042811	CORPO ANCORAGGIO DOCCIA	
6	4401040230	SET MANOPOLA + ASSE VALVOLA		15	4401040903	PRESA A TERRA	
7	4401040019	ASSE VALVOLA		16	4401040710	TIRANTE BRACCIO DOCCIA	
8	4401040231	POMELLO CICLINDRICO		17	59775R0002	BRACCIO DOCCIA	
9	4401040232	CAVETTO 1/2" H. - 1/2" H. DN11 L=1100"		18	59775R0001	CORPO DOCCIA	

CODE **59775**

BESCHREIBUNG: **DUSCHE ANGEL 2 DUSCHKÖPFE 2 VENTILE**

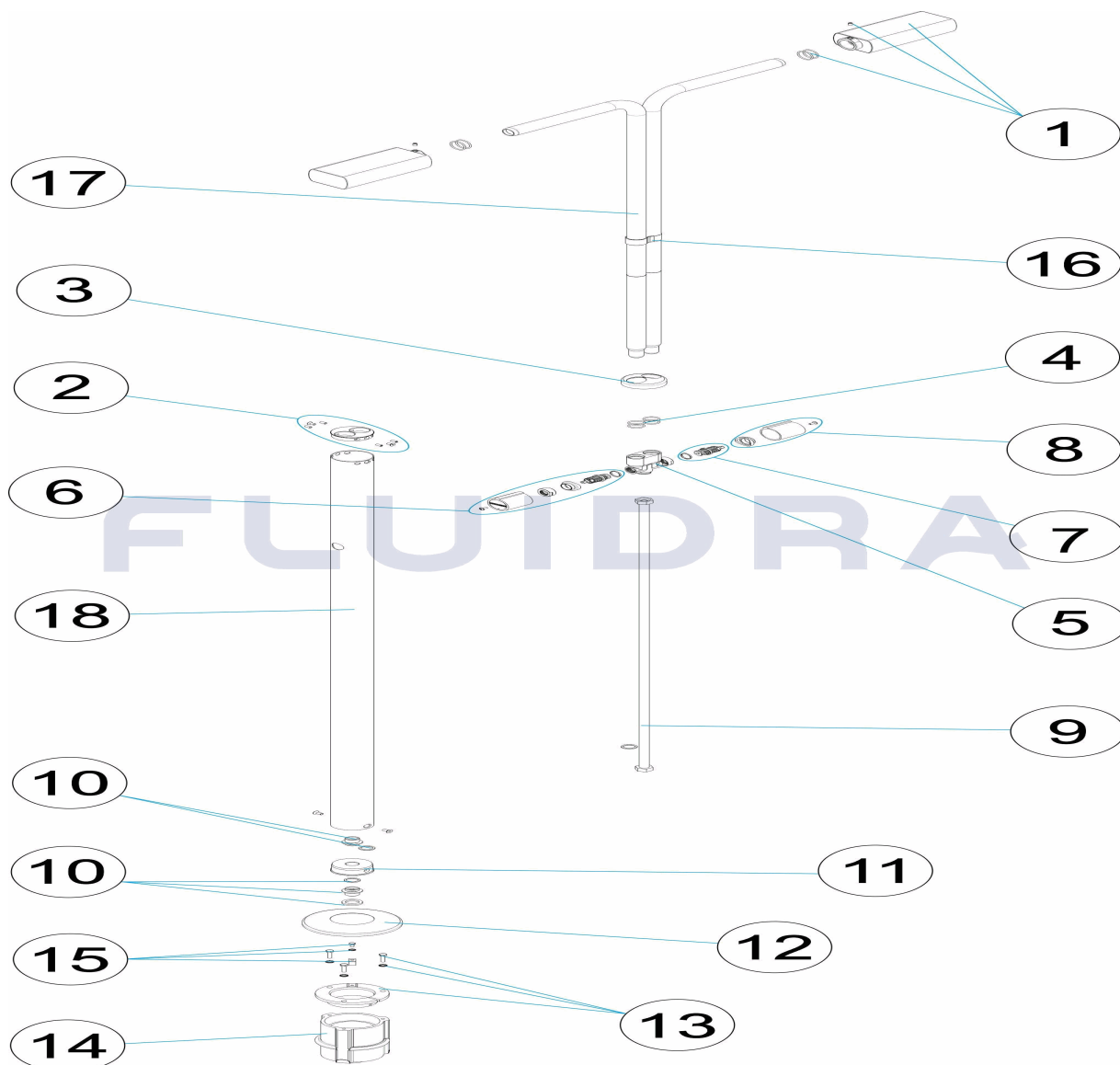


**DEUTSCH**

POS	CODE	BESCHREIBUNG	MENGE	POS	CODE	BESCHREIBUNG	MENGE
1	4401040226	DUSCHKOPF RECHTECKIG MIT MADENSCH	10	4401040234	ANSCHLUSS AUSGANG 1/2" NIPPEL - 1/2 NI		
2	4401040227	FÜHRUNG OBEN 2 ARME	11	4401040233	SAMMELROHR UNTEN DUSCHE		
3	4401040707	DEKO-ABSCHLUSSRING OBEN 2 ARME	12	4401040507	DEKO-ABSCHLUSSRING UNTEN		
4	4401040228	O-RING	13	4401042810	FIXIERUNG DUSCHVERANKERUNG D. 63		
5	4401040229	SAMMELROHR 2 VENTILE 2 SCHLITZROHF	14	4401042811	VERANKERUNG DUSCHEINHEIT		
6	4401040230	SET DREHGRIFF UND VENTILACHSE	15	4401040903	ERDUNG		
7	4401040019	VENTILACHSE	16	4401040710	ZUGHALTERUNG DUSCHARME		
8	4401040231	DREHGRIFF ZYLINDRISCH	17	59775R0002	DUSCHARM		
9	4401040232	SCHLAUCHLEITUNG 1/2" MUFFE - 1/2" MUF	18	59775R0001	DUSCHEINHEIT 2 VENTILE		

CODIGO **59775**

DESCRIÇÃO: **DUCHE ANGEL 2 DIFUSORES 2 VÁLVULA**



**PORTUGUES**

POS	CODIGO	DESCRIÇÃO	JANTIDADE	POS	CODIGO	DESCRIÇÃO	JANTIDADE
1	4401040226	DIFUSOR RETANGULAR COM PARAFUSO I		10	4401040234	CONEXÃO SAÍDA 1/2" M. - 1/2 M "	
2	4401040227	GUIA TOP 2 BRAÇOS		11	4401040233	COLECTOR INFERIOR CHUVEIRO	
3	4401040707	TAMPA EMBELEZADORA SUP. 2 BRAÇOS		12	4401040507	TAMPA EMBELEZADORA INFERIOR	
4	4401040228	JUNTA TÓRICA		13	4401042810	FIXAÇÃO ÂNCORA CHUVEIRO D 63	
5	4401040229	COLECTOR 2 VIAS 2 BRAZOS		14	4401042811	CORPO ÂNCORA CHUVEIRO	
6	4401040230	CJTO. PUXADOR + EIXO VÁLVULA		15	4401040903	LIGAÇÃO A TERRA	
7	4401040019	EIXO VÁLVULA		16	4401040710	TIRANTE BRAÇOS CHUVEIRO	
8	4401040231	MAÇANETA CILÍNDRICA		17	59775R0002	BRAÇO DUCHE	
9	4401040232	MANGA 1/2" H. - 1/2" H. DN11 L=1100"		18	59775R0001	CORPO DE CHUVEIRO	